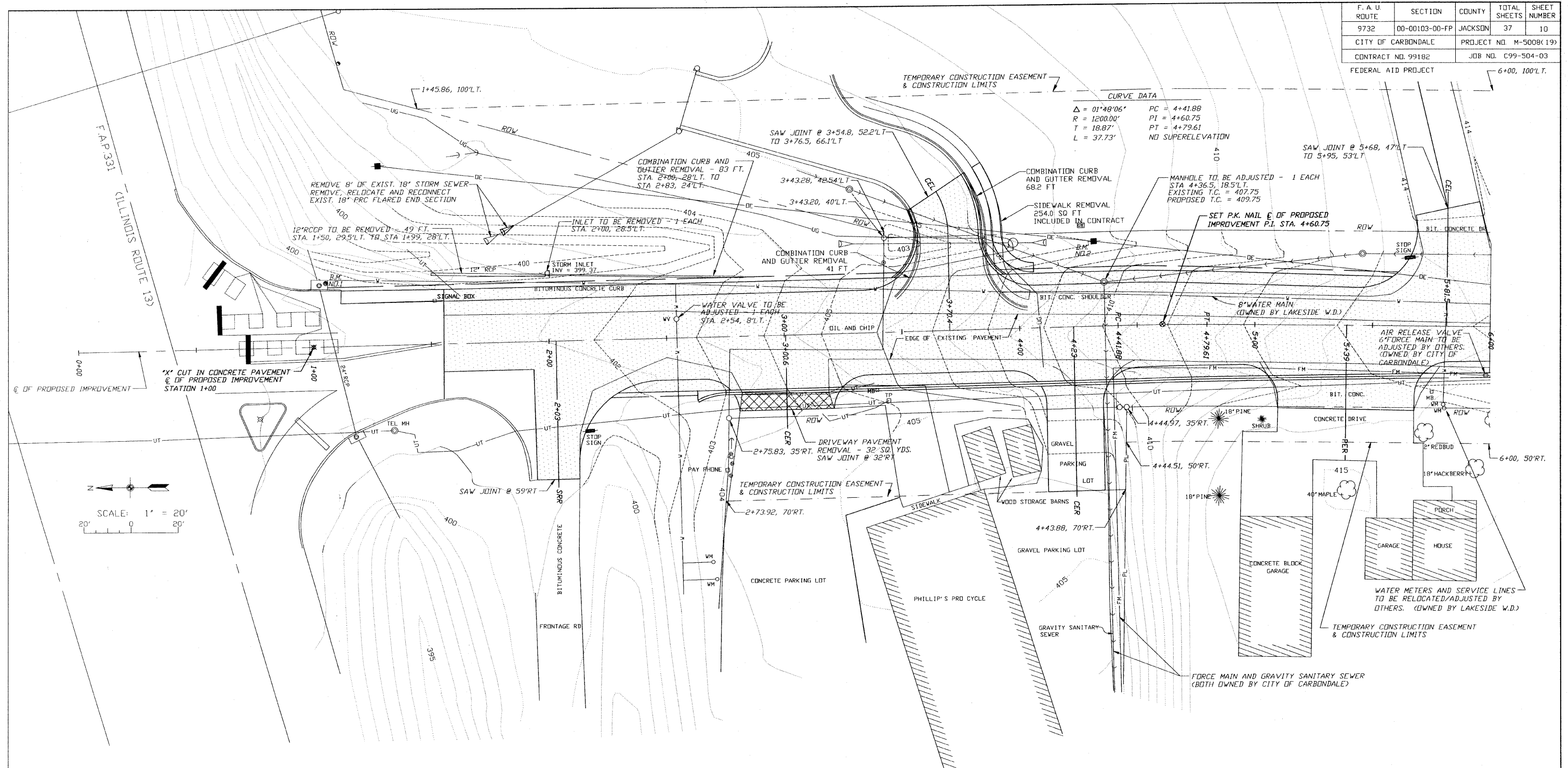
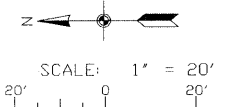


F. A. U. ROUTE	SECTION	COUNTY	TOTAL SHEETS	SHEET NUMBER
9732	00-00103-00-FP	JACKSON	37	10
CITY OF CARBONDALE		PROJECT NO. M-5008(19)		
CONTRACT NO. 99182		JOB NO. C99-504-03		
FEDERAL AID PROJECT				



CURVE DATA

$\Delta = 01^{\circ}49'06''$	PC = 4+41.88
R = 1200.00'	PI = 4+60.75
T = 18.87'	PT = 4+79.61
L = 37.73'	NO SUPERELEVATION



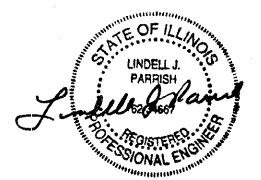
BENCHMARKS

B.M. NO.1 - TOP OF 3" DIA. ALUMINUM CAP MONUMENT FOUND AT THE S.E. CORNER OF CONCRETE INLET AT STA. 1+05, 27'L.T. (ELEV. = 402.32)

B.M. NO.2 - 2-60D NAILS SET IN WEST SIDE OF POWER POLE AT STA. 4+30, 35' L.T. (ELEV. = 409.51)

LEGEND

<ul style="list-style-type: none"> — POWER POLE — POWER / TELEPHONE POLE — POWER POLE W/ LIGHT — TELEPHONE POLE — TELEPHONE PEDESTAL — ANCHOR — SANITARY SEWER AND MANHOLE — FM - FORCE MAIN — CD - SANITARY SEWER CLEANDOUT — STORM INLET — FIRE HYDRANT — WM - WATER VALVE — WM - WATER METER — V - WATER MAIN — DE - OVERHEAD ELECTRIC LINE — UE - UNDERGROUND ELECTRIC LINE — OT - OVERHEAD TELEPHONE LINE — UT - UNDERGROUND TELEPHONE LINE — UG - UNDERGROUND GAS LINE — CATV - CABLE TELEVISION — SIGN 	<ul style="list-style-type: none"> — FENCE — TREELINE — RCP - REINFORCED CONCRETE PIPE — CMP - CORRUGATED METAL PIPE CULVERT — CPVC - CORRUGATED PLASTIC PIPE CULVERT — TC - TOP OF CASTING - TOP OF CURB — FL - FLOW LINE — PL - PROPERTY LINE — EXISTING RIGHT-OF-WAY — TEMPORARY CONSTRUCTION EASEMENT AND CONSTRUCTION LIMITS — 400 - EXISTING CONTOUR — 400 - PROPOSED CONTOUR — TREE REMOVAL, ACRES — TREE REMOVAL, UNITS — DRIVEWAY PAVEMENT REMOVAL — PROPOSED BITUMINOUS CONCRETE PAVEMENT — PROPOSED EARTH SHOULDER — PROPOSED AGGREGATE SURFACE
--	--



CIP NO. ST0102 - REED STATION ROAD
 GRADING AND ITEM REMOVAL PLAN
 STA. 0+00 TO STA. 6+00