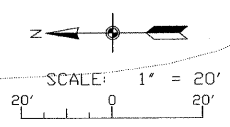
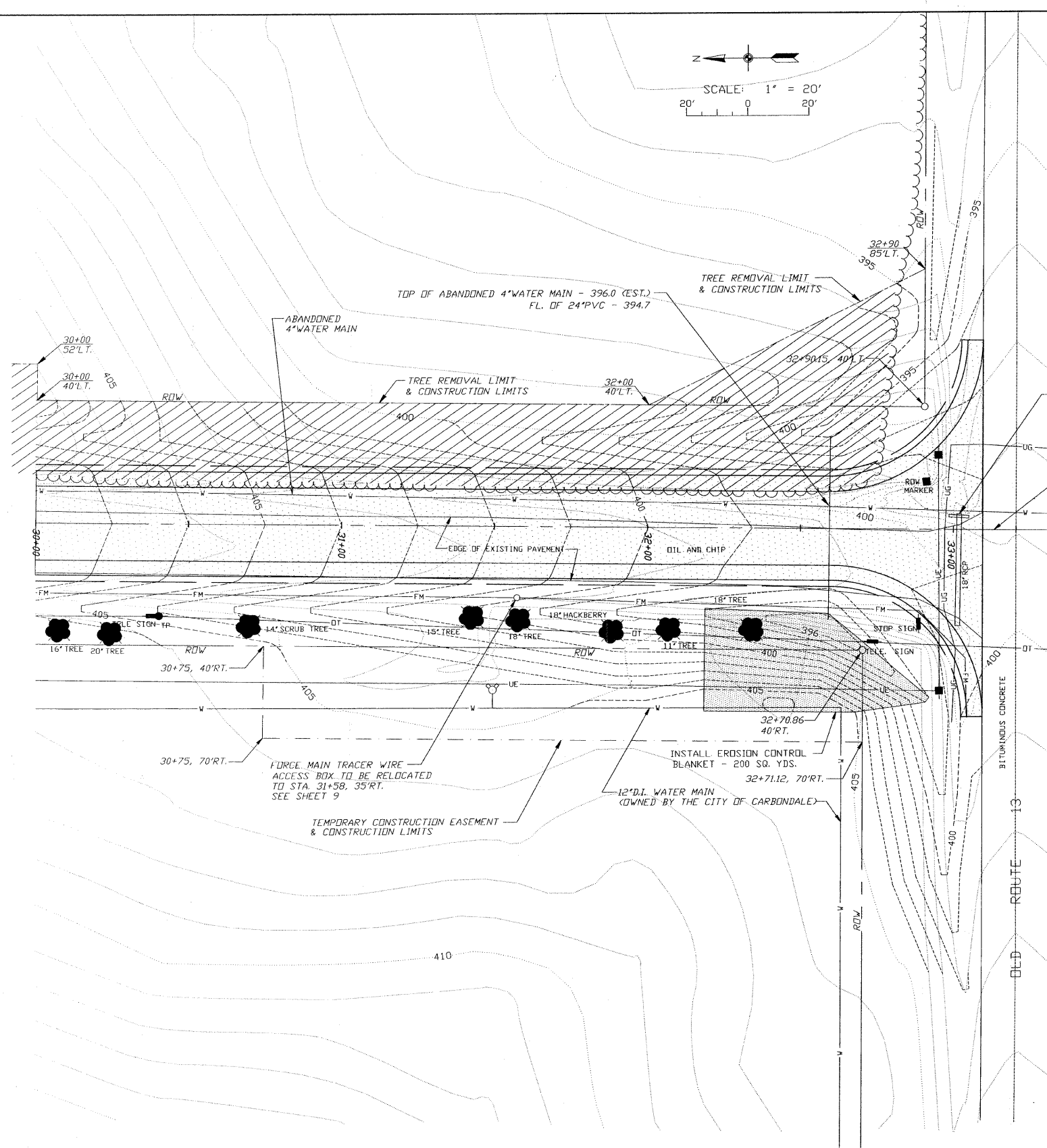


F. A. U. ROUTE	SECTION	COUNTY	TOTAL SHEETS	SHEET NUMBER
9732	00-00103-00-FP	JACKSON	37	15
CITY OF CARBONDALE		PROJECT NO. M-5008(19)		
CONTRACT NO. 99182		JOB NO. C99-504-03		

FEDERAL AID PROJECT



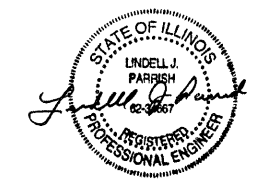
**BENCHMARKS**  
 B.M. NO.6 - 1" CUT ON TOP OF WEST END OF 18"RCP FOR DRIVEWAY TO HOUSE ON SOUTH SIDE OF OLD ROUTE 13 STA. 33+45, 65'L.T. (ELEV. = 394.99)



□ B.M. NO.6  
 18"RCCP & HEADWALL TO BE REMOVED - 36 FT. STA 33+02.5'L.T. TO 31'RT. TRENCH BACKFILL - 10 CU. YDS.  
 ○ ○ OF PROPOSED IMPROVEMENT  
 ○ ○ OF PROPOSED IMPROVEMENT STATION 33+35

**LEGEND**

■ - POWER POLE	---X--- - FENCE
□ - POWER / TELEPHONE POLE	~ ~ ~ - TREE LINE
⊕ - POWER POLE W/ LIGHT	---RCP--- - REINFORCED CONCRETE PIPE
● - TELEPHONE POLE	---CMP--- - CORRUGATED METAL PIPE CULVERT
□ TP - TELEPHONE PEDESTAL	---CPVC--- - CORRUGATED PLASTIC PIPE CULVERT
← - ANCHOR	TC - TOP OF CASTING - TOP OF CURB
○ - SANITARY SEWER AND MANHOLE	FL - FLOW LINE
FM - FORCE MAIN	PL - PROPERTY LINE
CO - SANITARY SEWER CLEANDOUT	--- - EXISTING RIGHT-OF-WAY
⊙ - STORM INLET	--- - TEMPORARY CONSTRUCTION EASEMENT AND CONSTRUCTION LIMITS
⊕ - FIRE HYDRANT	---400--- - EXISTING CONTOUR
WV ○ - WATER VALVE	---400--- - PROPOSED CONTOUR
WM ○ - WATER METER	▨ - TREE REMOVAL, ACRES
W - WATER MAIN	● - TREE REMOVAL, UNITS
DE - OVERHEAD ELECTRIC LINE	▨ - DRIVEWAY PAVEMENT REMOVAL
UE - UNDERGROUND ELECTRIC LINE	--- - PROPOSED BITUMINOUS CONCRETE PAVEMENT
OT - OVERHEAD TELEPHONE LINE	--- - PROPOSED EARTH SHOULDER
UT - UNDERGROUND TELEPHONE LINE	--- - PROPOSED AGGREGATE SURFACE
UG - UNDERGROUND GAS LINE	
CATV - CABLE TELEVISION	
■ - SIGN	



CIP NO. ST0102 - REED STATION ROAD  
 GRADING AND ITEM REMOVAL PLAN  
 STA. 30+00 TO STA. 33+10