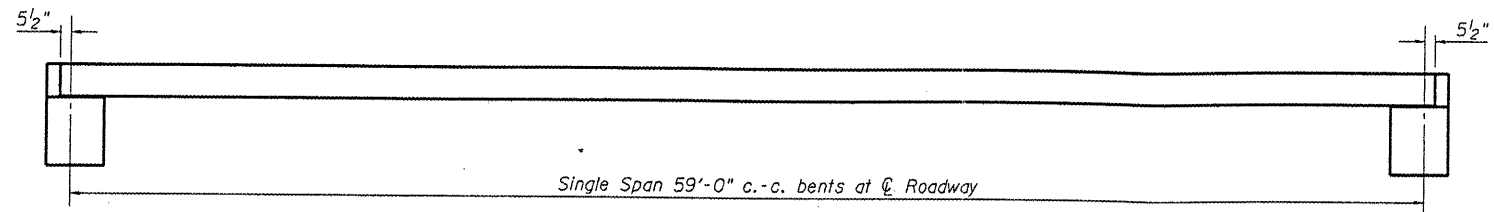
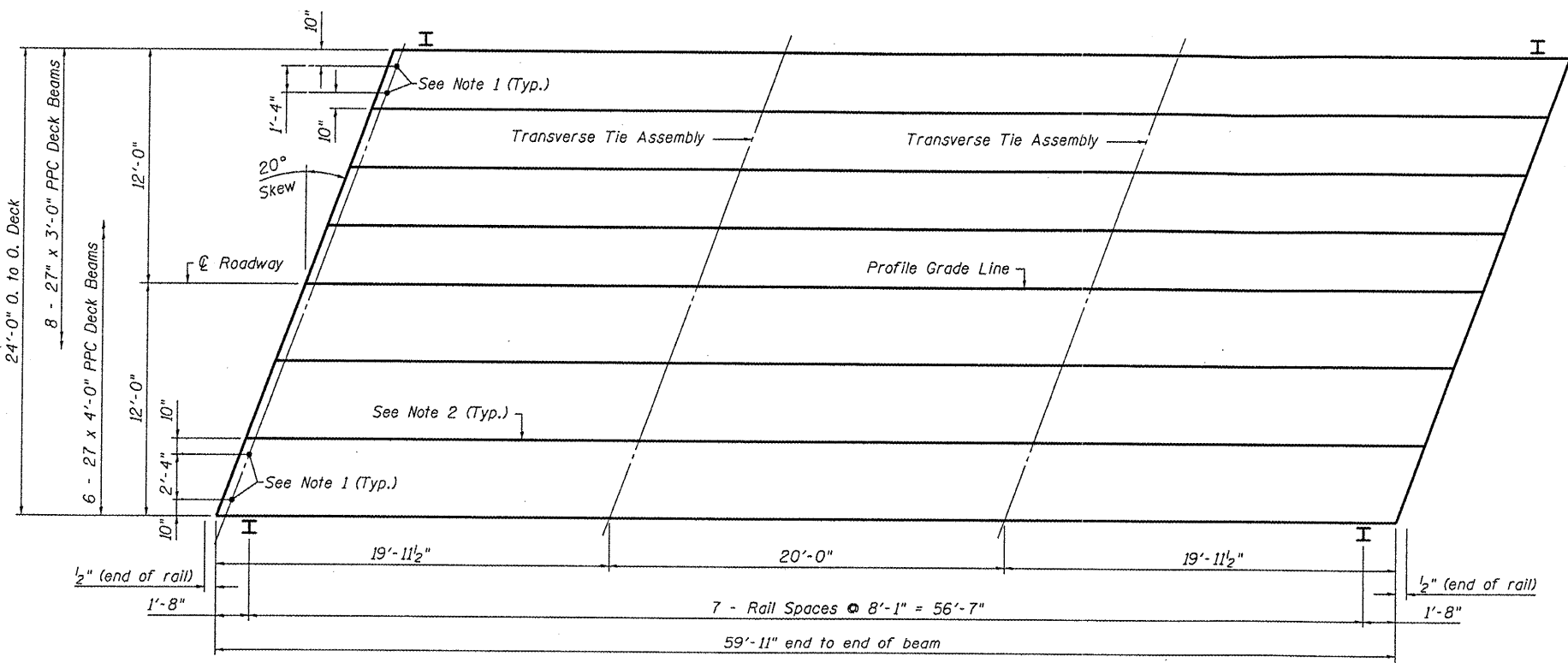


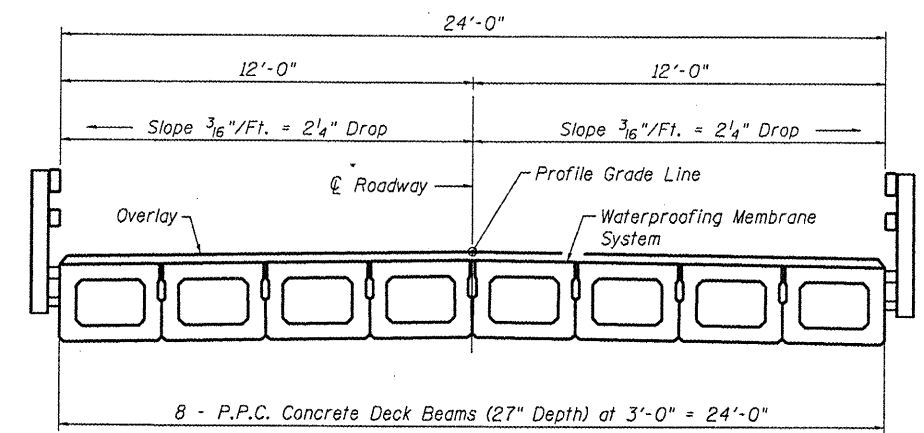
ROUTE	SECTION	COUNTY	TOTAL SHEETS	SHEET NO.
TR 95	94-01166-00-BR	PULASKI	13	4
PROJECT NO. BROS-153(30)			CONTRACT NO. 99327	



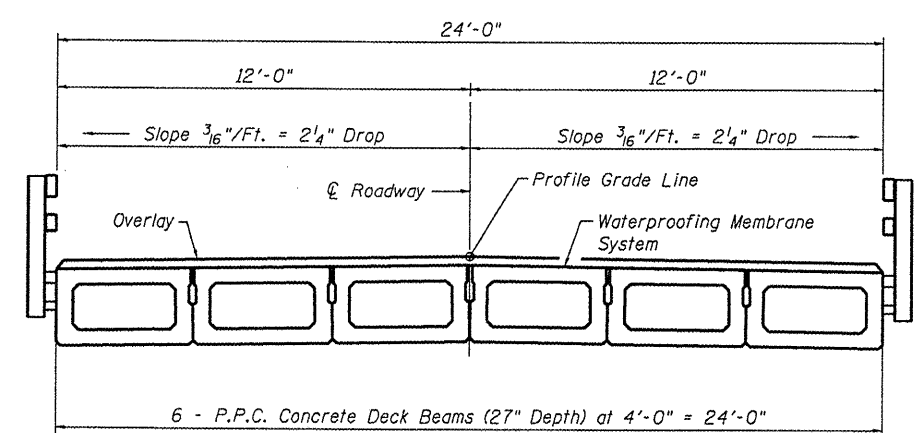
ELEVATION



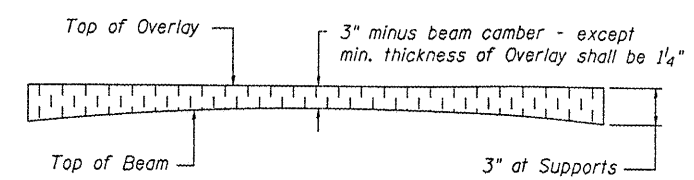
PLAN



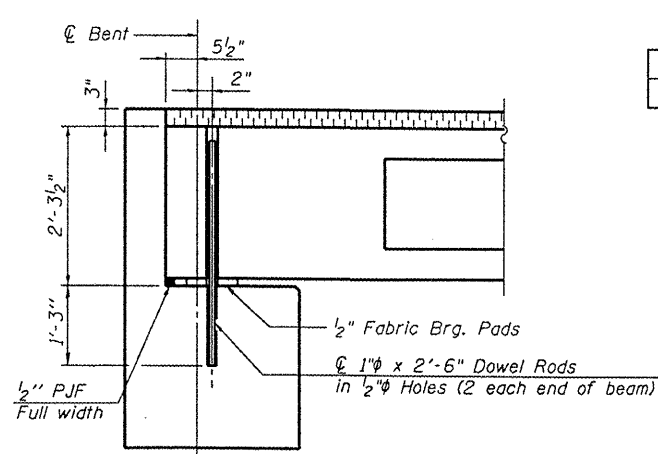
CROSS SECTION



CROSS SECTION



PROFILE OF OVERLAY



SECTION AT ABUTMENTS
(Along ϕ Beams)

QUANTITIES FOR ONE SPAN

P.P.C. Concrete Deck Beams (27" Depth)	1440 Sq. Ft.
Steel Railing, Type S1	120 Ft.

SUPERSTRUCTURE DETAILS
TOWNSHIP ROUTE 95 OVER
PULASKI SLOUGH
SECTION 94-01166-00-BR
PULASKI COUNTY
STA. 15+00

NOTES

- After beams have been erected, holes shall be drilled into substructure and anchor dowels placed. Dowel holes shall be filled with non-shrink grout to top of beam and allowed to cure min. 24 hrs. prior to grouting the shear keys.
- Longitudinal keys shall be grouted.

DESIGNED	SDS
CHECKED	CWC
DRAWN	DLH
CHECKED	SDS

WHKS & CO.

ENGINEERS PLANNERS LAND SURVEYORS

MASON CITY, IOWA DUBUQUE, IOWA ANES, IOWA
 E. DUBUQUE, ILLINOIS SPRINGFIELD, ILLINOIS ROCHESTER, MINNESOTA

Date: 11/6/2008
 File Name: L:\Jobs\DOT_BBS\9401166-00-BR.dwg
 L:\Jobs\DOT_BBS\9401166-00-BR.dwg