

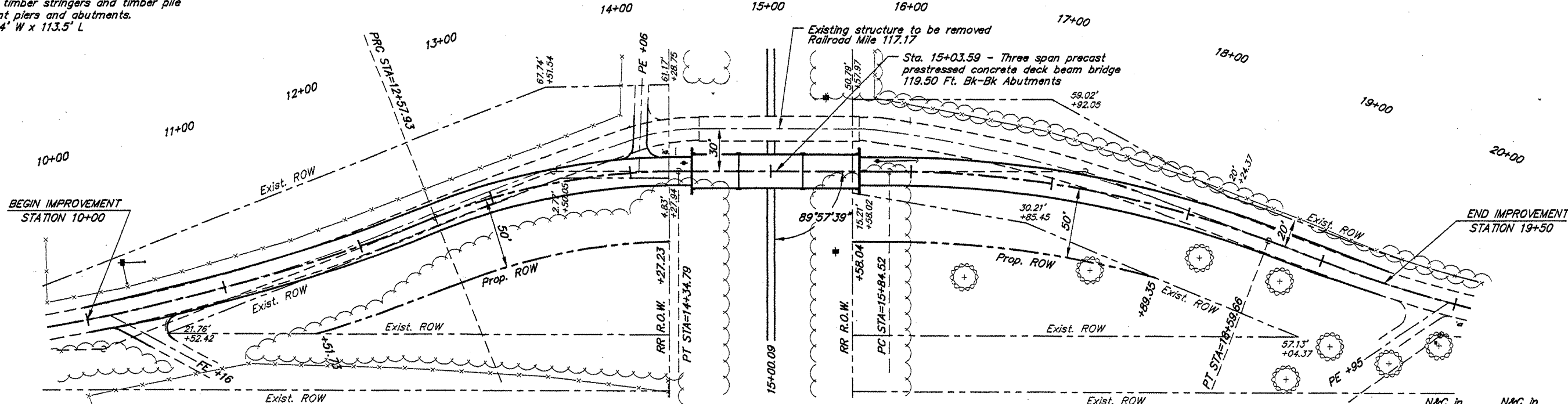
TBM - RR Spike in fence post
41' Lt. Sta. 13+96
Elev. 420.00

Existing Structure - 6 Span timber deck
on timber stringers and timber pile
bent piers and abutments.
17.4' W x 113.5' L

CURVE DATA
PI Sta = 13+47.43
 $\Delta = 21^{\circ}39'53''$ T = 89.50'
D = 12^{\circ}15'00'' L = 176.85'
R = 467.72' E = 8.49'

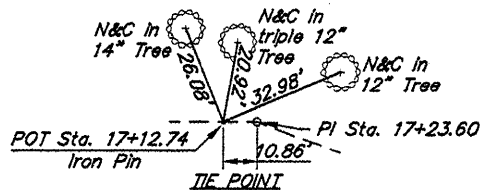
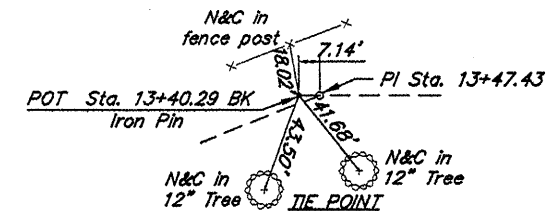
CURVE DATA
PI Sta = 17+23.60
 $\Delta = 20^{\circ}38'09''$ T = 139.08'
D = 7^{\circ}30'00'' L = 275.14'
R = 763.94' E = 12.56'

ROUTE	SECTION	COUNTY	TOTAL SHEETS	SHEET NO.
TR 80	00-01198-00-BR	MASSAC	13	2
PROJECT NO. BROS-127(19)			CONTRACT NO. 99354	

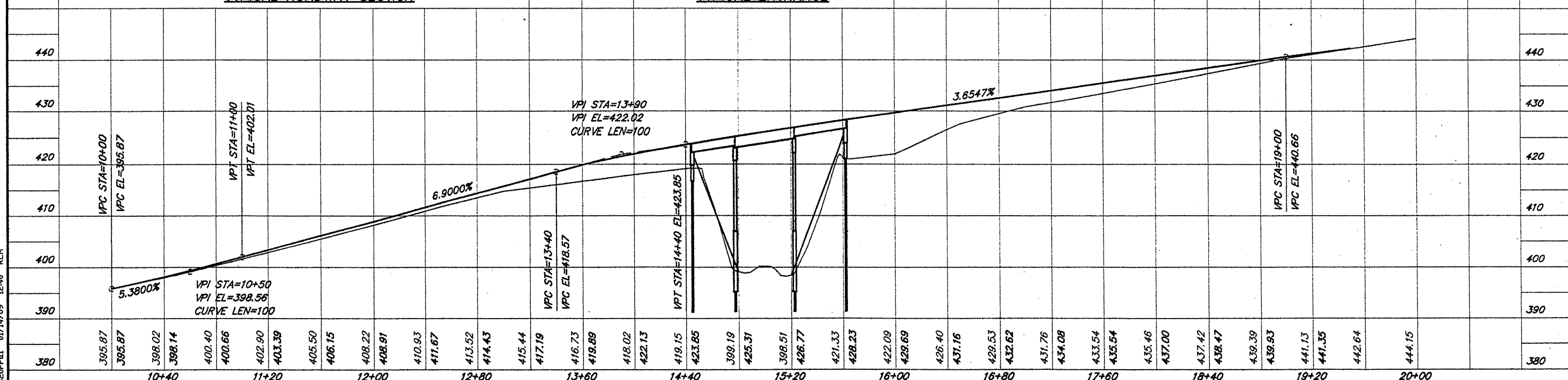
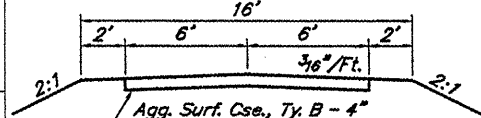
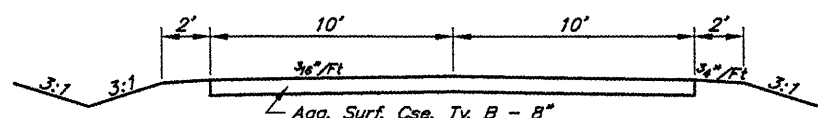
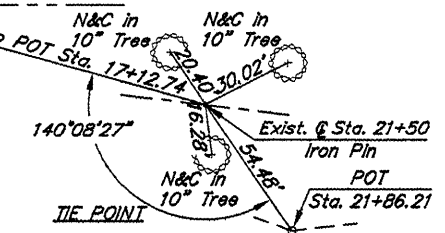


SCALES:
1" = 80' HOR
1" = 20' VER

CURVE DATA
PI Sta = 10+09.62
 $\Delta = 20^{\circ}21'15''$ T = 253.66'
D = 12^{\circ}15'00'' L = 501.97'
R = 1413.02' E = 22.59'



TREE REMOVAL ACRES
Sta. 13+15 to Sta. 14+70 Rt. - 0.12 Ac.
Sta. 15+30 to Sta. 16+00 Rt. - 0.08 Ac.
@ Roadway to Construction Limits



620PPI-I 01/14/09 12:40 RLM