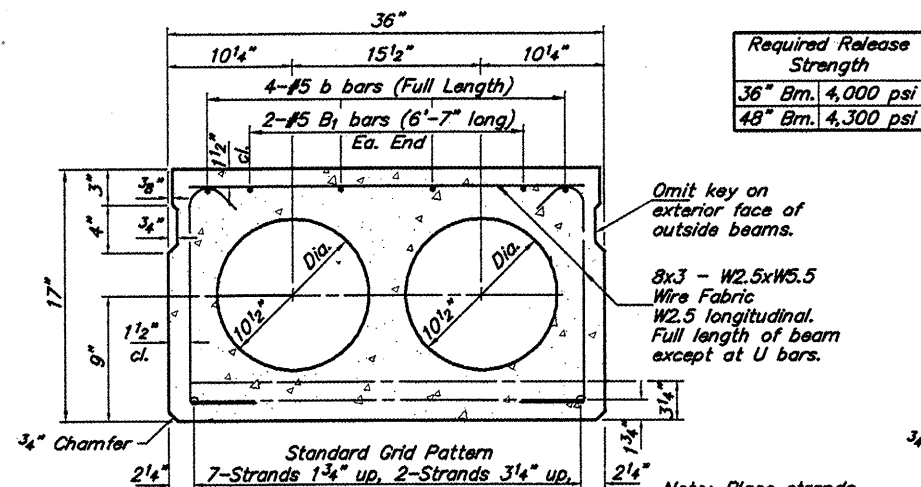
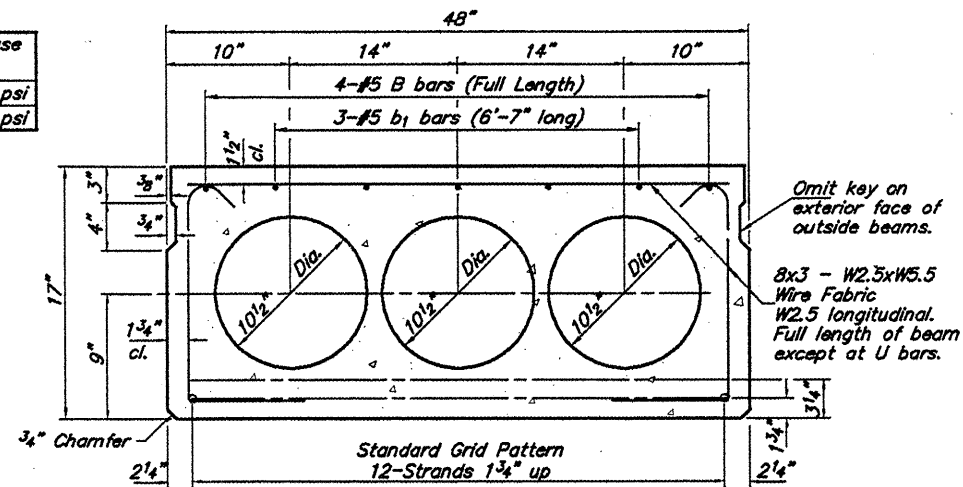


ROUTE	SECTION	COUNTY	TOTAL SHEETS	SHEET NO.
TR 80	00-01198-00-BR	MASSAC	13	4
PROJECT NO. BROS-127(19)			CONTRACT NO. 99354	

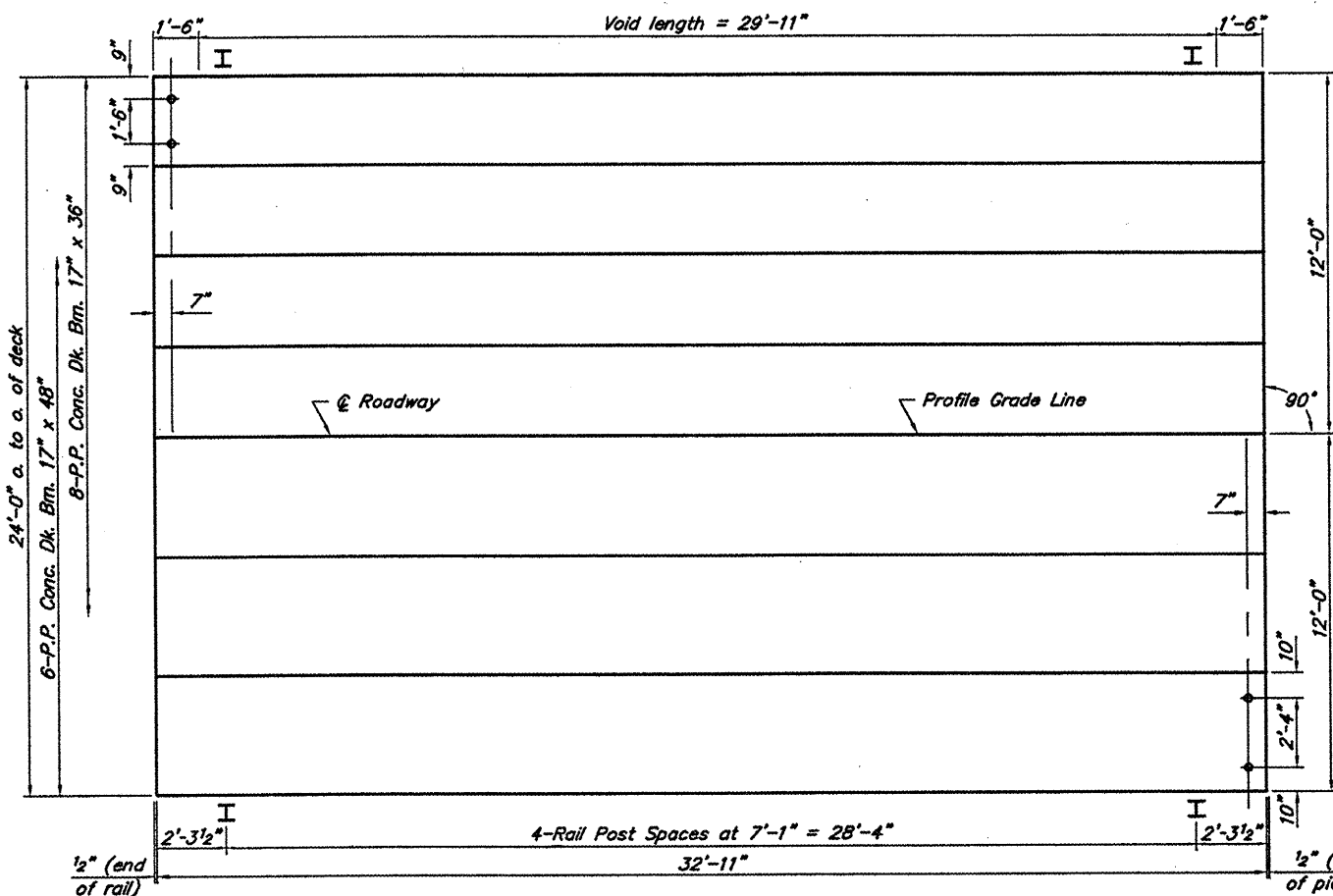


Required Release Strength
36" Bm. 4,000 psi
48" Bm. 4,300 psi

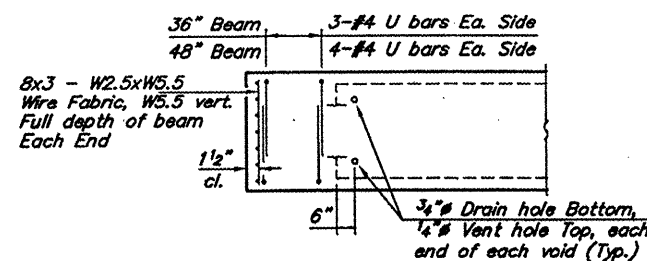


TYPICAL SECTION 36" BEAM
9-1/2" Strands Each Strand Stressed to 28,900 lbs.

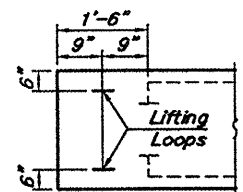
TYPICAL SECTION 48" BEAM
12-1/2" Strands Each Strand Stressed to 28,900 lbs.



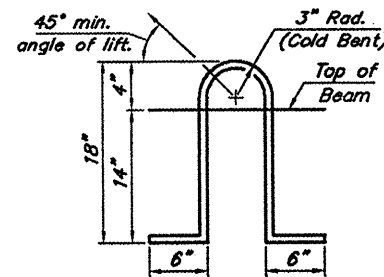
PLAN



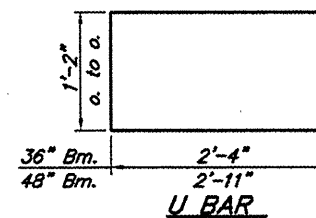
END PLAN



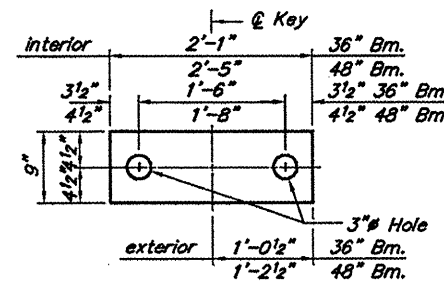
END BLOCK DETAIL



LIFTING LOOP DETAIL



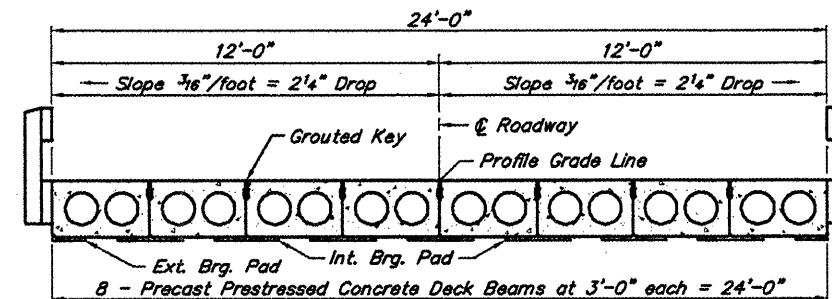
U BAR



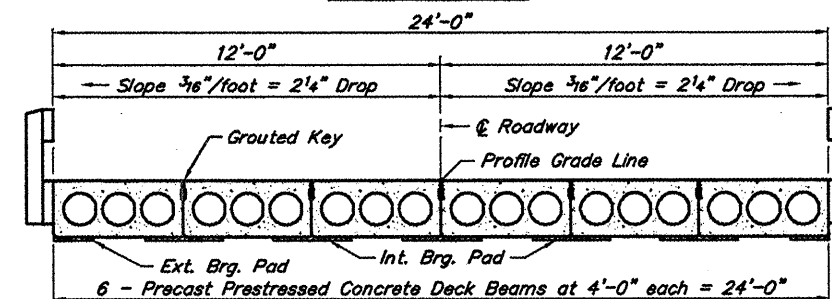
FABRIC BEARING PAD

NOTES

Reinforcement bars shall conform to AASHTO M-31, M-42 or M-53, Grade 60. Prestressing steel shall be uncoated high strength, stress-relieved 7-wire strand, Grade 270. The nominal diameter shall be 1/2" and the nominal cross-sectional area shall be 0.153 sq. in. An equal substitution of the low-relaxation strands for the stress-relieved strands will be permitted. Lifting loops shall be 5/8" diameter, 6x25 class wire rope with fiber core and shall have a minimum ultimate tensile strength of 33,000 lbs. or 2-1/2"-270 ksi strands, as shown. Keyway surfaces shall be cleaned to remove form oil or other bond breaking material prior to shipment of the beams. Cleaning shall be done by sandblasting the keyway areas between the top of the beam and the bottom edge of the key. The bearing seat surfaces shall be adjusted by shimming to assure firm and even bearing. Two 1/8" fabric adjusting shims of the dimensions of the Exterior Bearing Pad shall be provided for each bearing. After beams have been erected, holes shall be drilled into substructure and anchor dowels placed. Dowel holes shall be filled with non-shrink grout to top of beam and allowed to cure a minimum of 24 hours prior to grouting the shear keys. Nominal 1" joint at @ Pier shall be filled with non-shrink grout. Rail Post Anchor Devices shall be cast into exterior face of outside beams as elsewhere specified.



CROSS SECTION



CROSS SECTION

QUANTITIES FOR SPAN 1

P.P. Conc. Dk. Bm. 17" Dp.	790 Sq. Ft.
Steel Railing, Type S1	66 Ft.

SUPERSTRUCTURE - SPAN 1
CN/IC RAILROAD
SECTION 00-01198-00-BR
MASSAC COUNTY