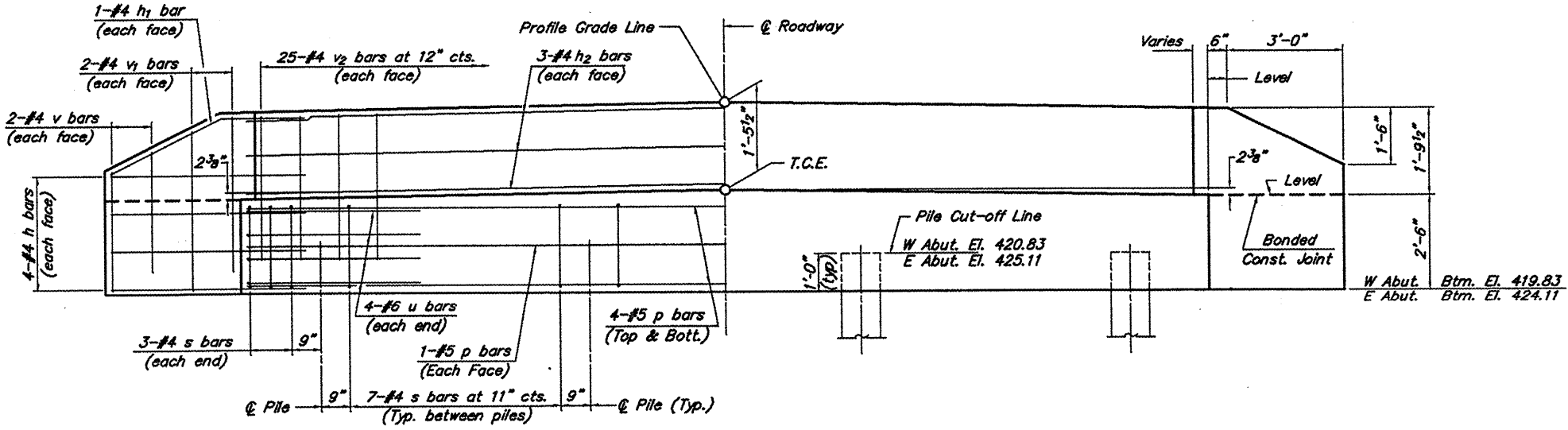
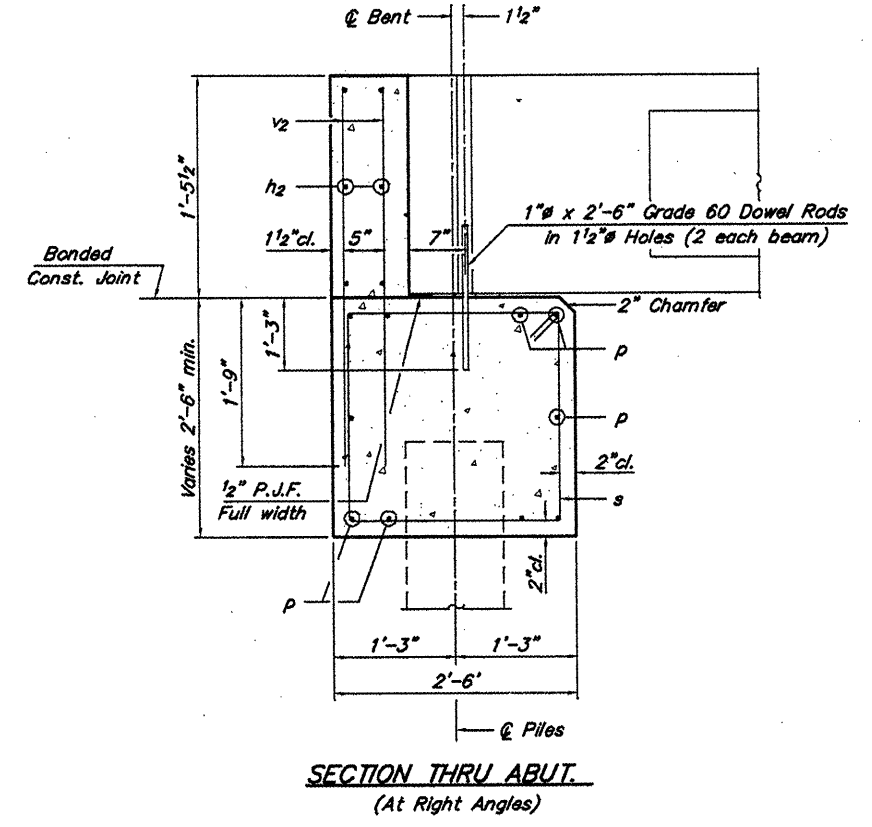
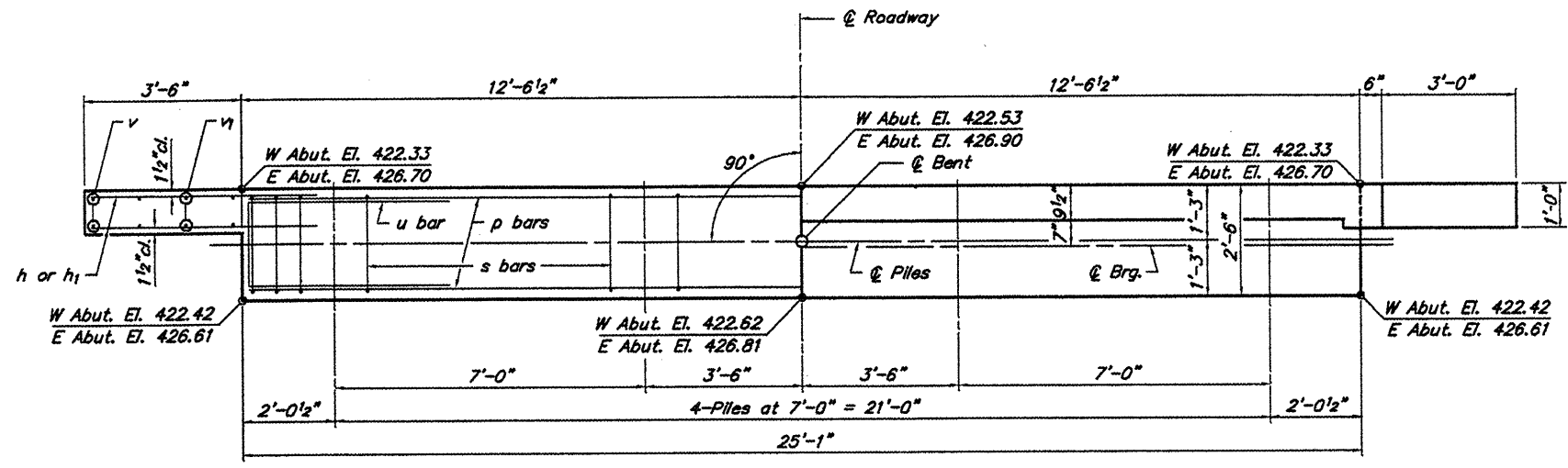


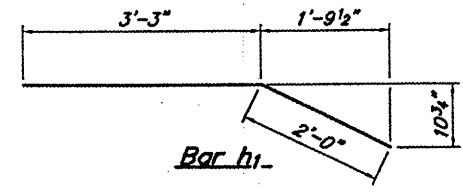
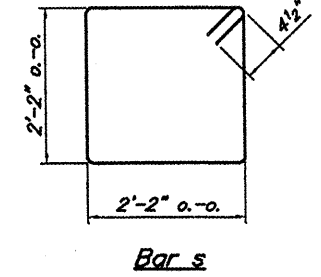
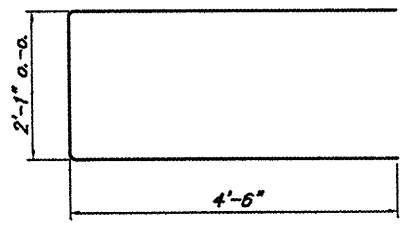
ROUTE	SECTION	COUNTY	TOTAL SHEETS	SHEET NO.
TR 80	00-01198-00-BR	MASSAC	13	7
PROJECT NO. BROS-127(19)			CONTRACT NO. 99354	



- NOTES**
- The Backwall and the portion of the Wingwalls above the bonded construction joint shall be cast against the in-place beam.
 - Reinforcement bars shall conform to A.A.S.H.T.O. M-31, M-42 or M-53, Grade 60.

DESIGN STRESSES

$f_c = 3,500 \text{ psi}$
 $f_y = 60,000 \text{ psi}$



BILL OF MATERIAL FOR ONE ABUTMENT

Bar	No.	Size	Length	Shape
h	16	#4	5'-0"	—
h ₁	4	#4	5'-3"	—
h ₂	6	#4	24'-9"	—
p	10	#5	24'-9"	—
s	27	#4	9'-5"	□
u	8	#6	11'-1"	—
v	8	#4	2'-6"	—
v ₁	8	#4	3'-5"	—
v ₂	50	#4	3'-1"	—
Concrete Structures			8.1	Cu. Yds.
Reinforcement Bars			860	Lbs.

ABUTMENTS
 CN/IC RAILROAD
 SECTION 00-01198-00-BR
 MASSAC COUNTY