

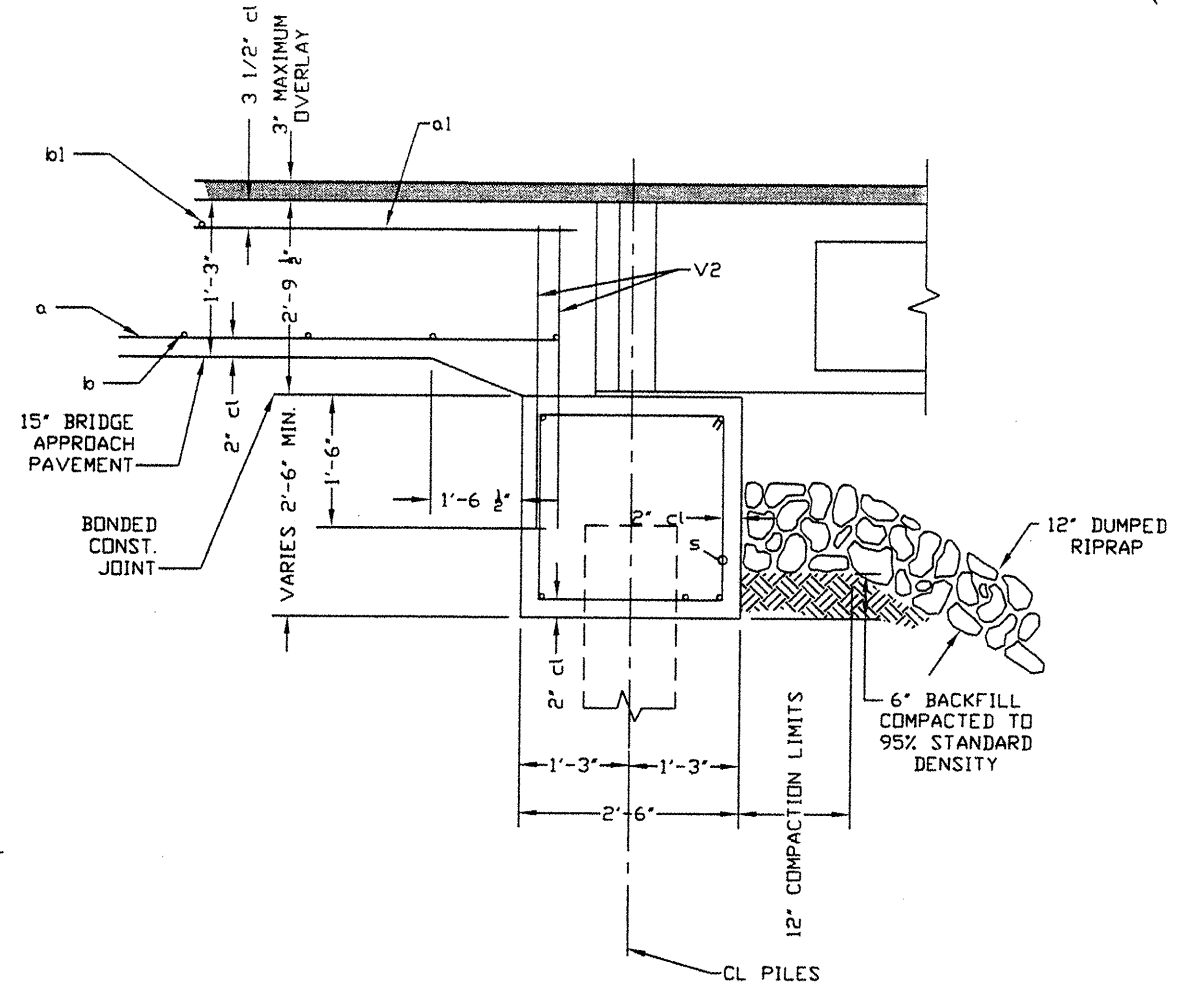
ROUTE	SECTION	COUNTY	TOTAL SHEETS	SHEET NO.
898	06-001141-000-BR	SALINE	16	2
SALINE COUNTY		HARCO ROAD		

CONTRACT NO. 99387
PROJECT NO. BROS-165(27)

SUMMARY OF QUANTITIES

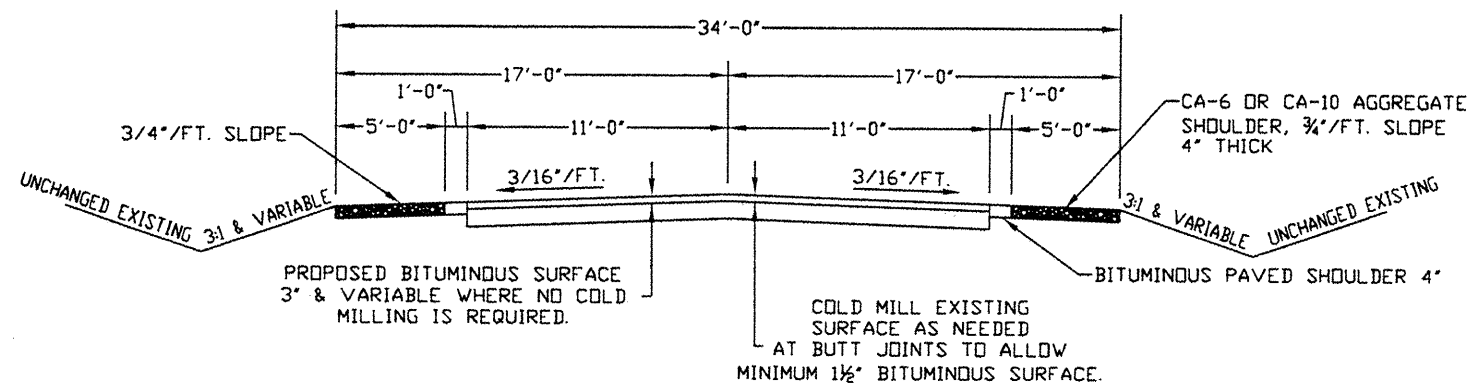
X081-2A

CODE NO.	PAY ITEM	UNIT	QUANTITY
20100500	TREE REMOVAL, ACRES	ACRE	0.2
Δ 20200100	EARTH EXCAVATION	CU YD	140
Δ 25001000	SEEDING, CLASS 2 (SPECIAL)	ACRE	0.3
Δ 28100807	STONE DUMPED RIPRAP, CLASS A4	TON	260
Δ 40603320	HOT-MIX ASPHALT SURFACE COURSE, MIX "C", N90	TON	150
42001165	BRIDGE APPROACH PAVEMENT	SQ YD	146.6
Δ 44000080	HOT-MIX ASPHALT SURFACE REMOVAL (COLD MILLING)	SQ YD	490
48101200	AGGREGATE SHOULDERS, TYPE B	TON	100
Δ 50100200	REMOVAL OF EXISTING STRUCTURES	L SUM	1
50105220	PIPE CULVERT REMOVAL	FOOT	50
50300225	CONCRETE STRUCTURES	CU YD	27.2
50300280	CONCRETE ENCASEMENT	CU YD	4.0
50400605	PRECAST PRESTRESSED CONCRETE DECK BEAMS (33" DEPTH)	SQ FT	2250
50800105	REINFORCEMENT BARS	POUND	3220
50800205	REINFORCEMENT BARS, EPOXY COATED	POUND	11174
Δ *50901050	STEEL RAILING, TYPE SM	FOOT	150
51201600	FURNISHING STEEL PILES HP12X53	FOOT	756
51202305	DRIVING PILES	FOOT	756
51500100	NAME PLATES	EACH	1
54200439	PIPE CULVERTS, TYPE 1 RCCP 24"	FOOT	170
58100200	WATERPROOFING MEMBRANE SYSTEM	SQ YD	250
58300100	PORTLAND CEMENT MORTAR FAIRING COURSE	FOOT	675
Δ *63000001	STEEL PLATE BEAM GUARDRAIL, TYPE A, 6 FOOT POSTS	FOOT	230
*63000005	STEEL PLATE BEAM GUARDRAIL, TYPE B	FOOT	100
Δ *63100041	TRAFFIC BARRIER TERMINAL, TYPE 1B	EACH	4
67100100	MOBILIZATION	L SUM	1
*78001110	PAINT PAVEMENT MARKING - LINE 4"	FOOT	675
Δ *50901550	STEEL RAILING, TYPE WT (SPECIAL)	FOOT	150
Δ *LR631020	TRAFFIC BARRIER TERMINAL, TYPE 1	EACH	4
Δ *63000002	STEEL PLATE BEAM GUARDRAIL, TYPE A, 6.75 FOOT POSTS	FOOT	230
* SPECIALTY ITEMS			
Δ SEE SPECIAL PROVISIONS			
HOT MIX ASPHALT SURFACE REMOVAL			
STATION 60+50 TO 61+50			
STATION 63+00 TO 64+00			



SECTION THRU ABUTMENT
(AT RIGHT ANGLES)
SECTION B-B
NO SCALE

Δ Revised 5-28-09



TYPICAL SECTION

NO SCALE

BAR LIST FOR ONE APPROACH PAVEMENT

BAR	NO.	SIZE	LENGTH	SHAPE
a	44	#9	29'-6"	U
a1	18	#4	29'-6"	—
b	29	#5	23'-0"	—
b1	8	#4	23'-0"	—

TOTAL REINFORCEMENT BARS, EPDXY COATED = 11174 LBS.