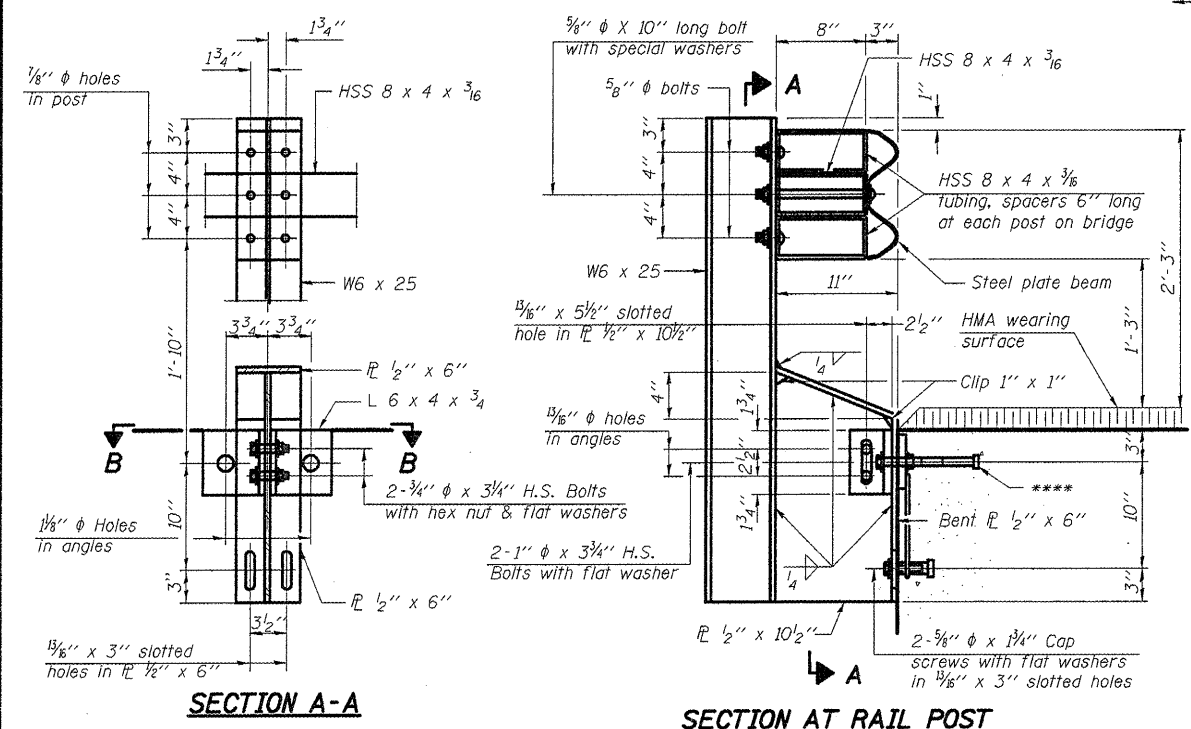
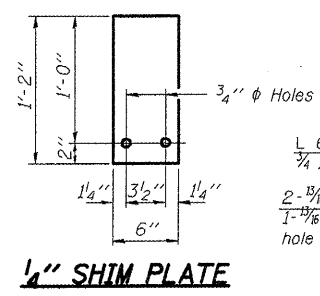


Notes:
 All field drilled holes shall be coated with an approved zinc rich paint before erection.
 For multi-span bridges, sufficient 1/4" x 6" x 1'-2" galvanized steel shims shall be provided to align rail between adjacent spans. Cost included with Steel Railing, Type WT.
 All steel rail members shall be galvanized according to Article 509.05 of the Standard Specifications.
 **** The studs of the anchor devices shall be placed below the top reinforcement bars and the outermost longitudinal reinforcement bar shall be placed directly above the studs of the rail post anchor device.

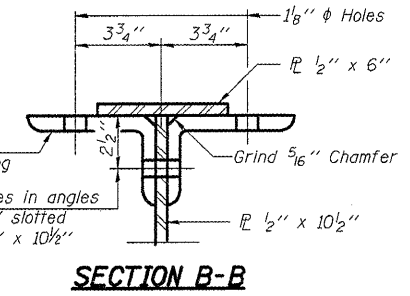


SECTION A-A

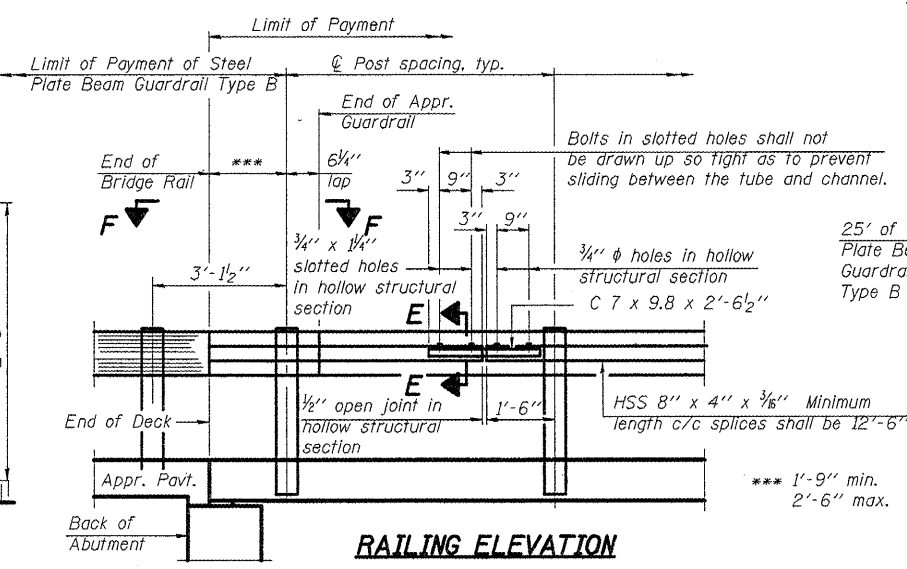
SECTION AT RAIL POST



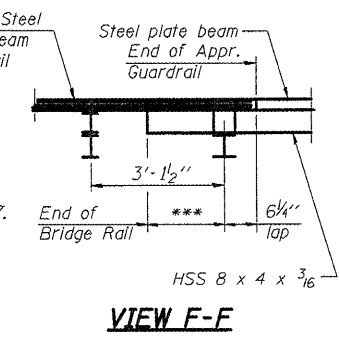
1/4" SHIM PLATE



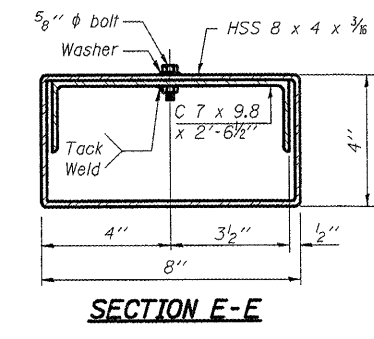
SECTION B-B



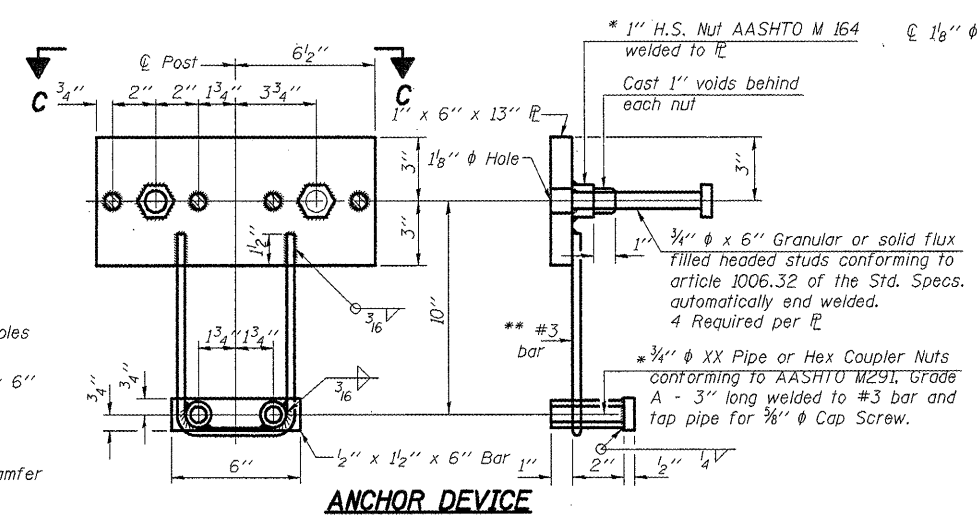
RAILING ELEVATION



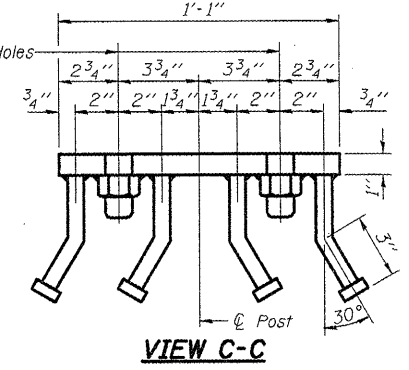
VIEW F-F



SECTION E-E



ANCHOR DEVICE



VIEW C-C

BILL OF MATERIAL

Item	Unit	Quantity
Steel Railing, Type WT	Foot	150

* Threaded areas shall be plugged or blocked off during casting of beam.
 ** Whenever the lower insert assemblies interfere with strand locations, the #3 bars shall be cut and adjusted in order to allow raising or lowering of the lower inserts. Maximum adjustment not to exceed 1/2".