

THE INFORMATION SHOWN ON THESE PLANS HAS BEEN OBTAINED FROM AVAILABLE RECORDS AND FIELD SURVEYS. NEITHER THE OWNER NOR THE ENGINEER ASSUMES ANY RESPONSIBILITY WITH RESPECT TO THE ACCURACY OR SUFFICIENCY OF THE INFORMATION PRESENTED HEREIN AND THERE IS NO GUARANTEE, EITHER EXPRESSED OR IMPLIED, THAT THE CONDITIONS INDICATED ARE REPRESENTATIVE OF THOSE TO BE ENCOUNTERED IN THE FIELD. IT SHALL BE THE CONTRACTOR'S RESPONSIBILITY TO VISIT THE SITE AND ACQUAINT HIMSELF WITH THE EXISTING CONDITIONS.

SEE SHEET 1 FOR ELECTRICAL LEGEND AND NOTES

SEE SHEET 4

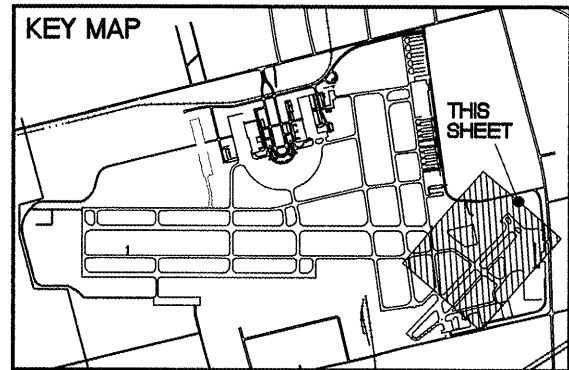
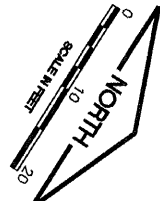
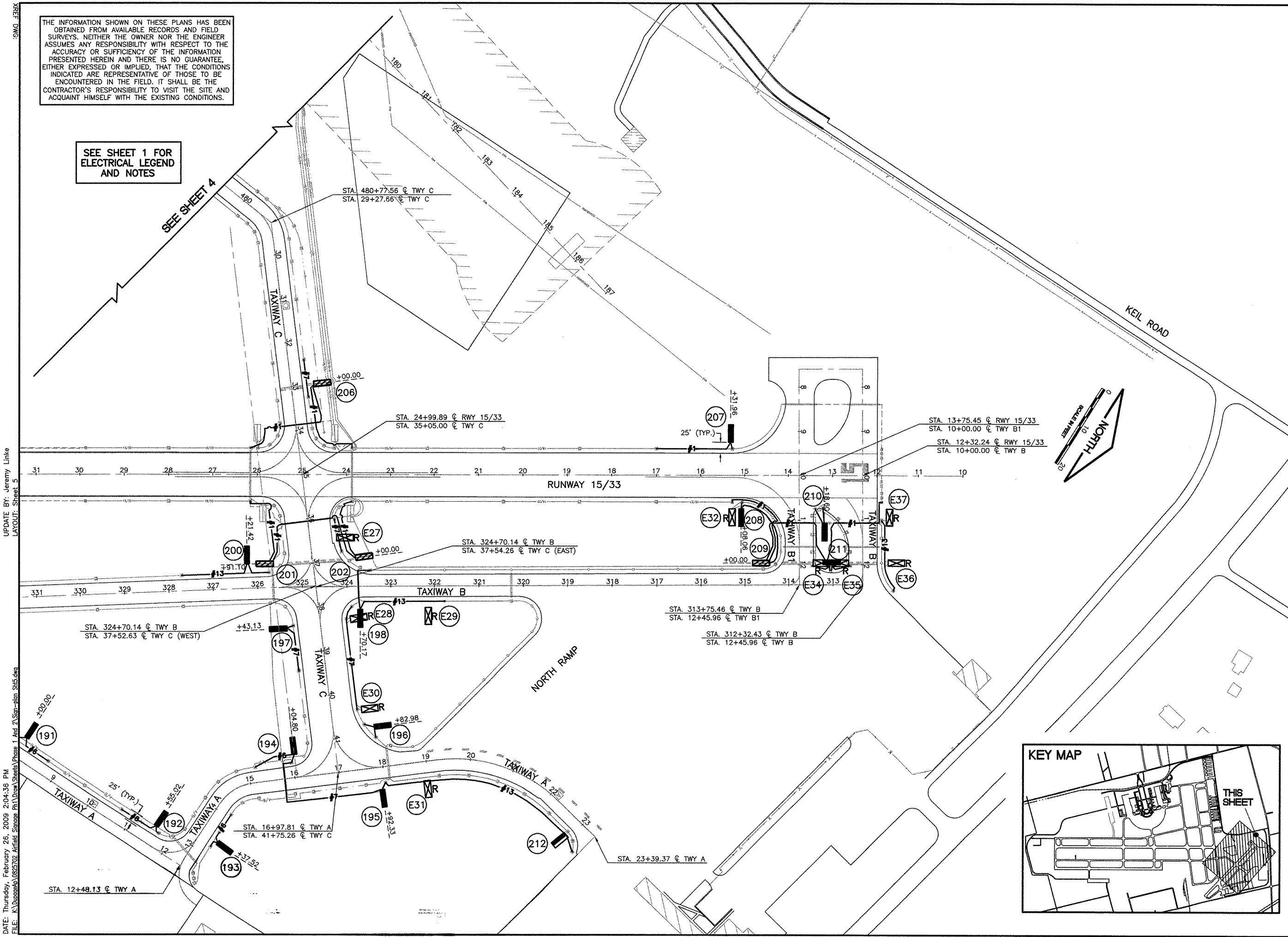
IL. CONTRACT: **DU078**
 IL. LETTING ITEM: **9A**
 IL. PROJECT: **DPA-3836**
 A.I.P. PROJECT: **3-17-0017-B23**

SURVEY BOOK # BOOK #

REVISIONS

NUMBER	BY	DATE

0 1 2
 THIS BAR IS EQUAL TO 2" AT FULL SCALE (34X22).



DUPAGE AIRPORT
 WEST CHICAGO, ILLINOIS
 AIRFIELD SIGNAGE UPDATES
 PROPOSED IMPROVEMENTS - SHEET 5

© Copyright CMT, Inc.
CMT
 CRAWFORD, MURPHY & TILLY, INC.
 CONSULTING ENGINEERS
 License No. 784-000613



DESIGN BY: JRL / AAO
 DRAWN BY: JRL / JRO
 CHECKED BY: JRL
 APPROVED BY: DLP
 DATE: 2/27/2009
 JOB No: 08257-02-00

FINAL

DATE: Thursday, February 26, 2009 2:04:36 PM
 FILE: K:\Duncan\0825702_Airfield_Signage_Plan\Drawn\Sheet5.dwg
 UPDATE BY: Jeremy Linke
 LAYOUT: Sheet 5