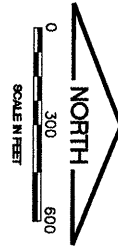


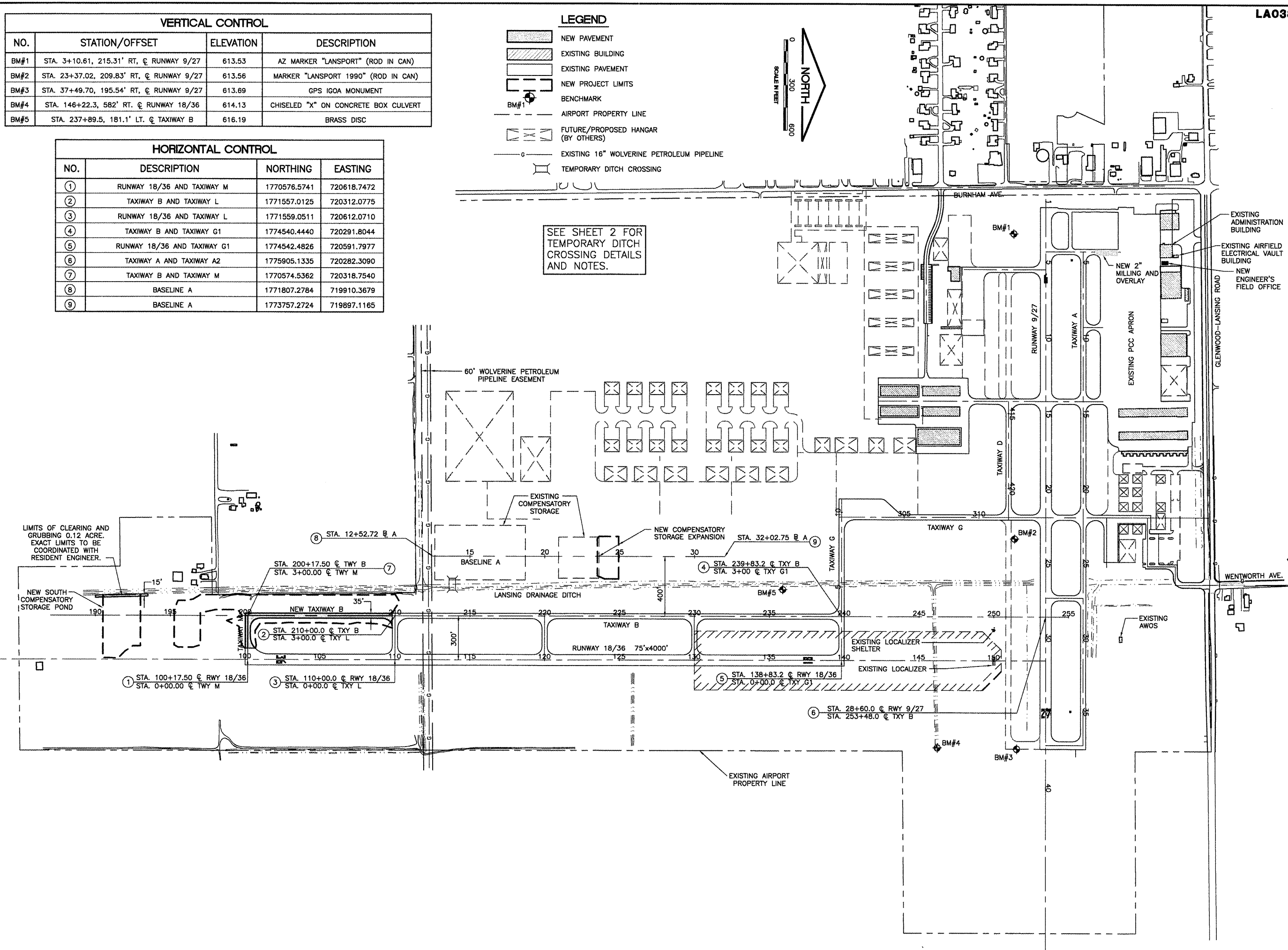
| VERTICAL CONTROL | | | |
|------------------|--|-----------|--------------------------------------|
| NO. | STATION/OFFSET | ELEVATION | DESCRIPTION |
| BM#1 | STA. 3+10.61, 215.31' RT. @ RUNWAY 9/27 | 613.53 | AZ MARKER "LANSPORT" (ROD IN CAN) |
| BM#2 | STA. 23+37.02, 209.83' RT. @ RUNWAY 9/27 | 613.56 | MARKER "LANSPORT 1990" (ROD IN CAN) |
| BM#3 | STA. 37+49.70, 195.54' RT. @ RUNWAY 9/27 | 613.69 | GPS IGOA MONUMENT |
| BM#4 | STA. 146+22.3, 582' RT. @ RUNWAY 18/36 | 614.13 | CHISELED "X" ON CONCRETE BOX CULVERT |
| BM#5 | STA. 237+89.5, 181.1' LT. @ TAXIWAY B | 616.19 | BRASS DISC |

| HORIZONTAL CONTROL | | | |
|--------------------|-----------------------------|--------------|-------------|
| NO. | DESCRIPTION | NORTHING | EASTING |
| ① | RUNWAY 18/36 AND TAXIWAY M | 1770576.5741 | 720618.7472 |
| ② | TAXIWAY B AND TAXIWAY L | 1771557.0125 | 720312.0775 |
| ③ | RUNWAY 18/36 AND TAXIWAY L | 1771559.0511 | 720612.0710 |
| ④ | TAXIWAY B AND TAXIWAY G1 | 1774540.4440 | 720291.8044 |
| ⑤ | RUNWAY 18/36 AND TAXIWAY G1 | 1774542.4826 | 720591.7977 |
| ⑥ | TAXIWAY A AND TAXIWAY A2 | 1775905.1335 | 720282.3090 |
| ⑦ | TAXIWAY B AND TAXIWAY M | 1770574.5362 | 720318.7540 |
| ⑧ | BASELINE A | 1771807.2784 | 719910.3679 |
| ⑨ | BASELINE A | 1773757.2724 | 719897.1165 |

- LEGEND**
- [Hatched Box] NEW PAVEMENT
 - [Dotted Box] EXISTING BUILDING
 - [Solid Box] EXISTING PAVEMENT
 - [Dashed Box] NEW PROJECT LIMITS
 - [Circle with Cross] BENCHMARK
 - [Dashed Line] AIRPORT PROPERTY LINE
 - [Crossed Box] FUTURE/PROPOSED HANGAR (BY OTHERS)
 - [Line with Dots] EXISTING 16" WOLVERINE PETROLEUM PIPELINE
 - [Zigzag Line] TEMPORARY DITCH CROSSING



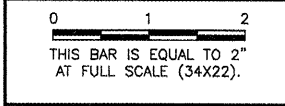
SEE SHEET 2 FOR
TEMPORARY DITCH
CROSSING DETAILS
AND NOTES.



LA038

K:\LansingAp\0529702\Draw\Sheets
FILE: 3-site.dwg
LAYOUT: Layout 1
UPDATE BY: Tony Marin
SURVEY BOOK #
DATE: Friday, February 27, 2009 2:47:52 PM
XREF DWG: Base-ty.dwg
tbcint.dwg
tb.dwg

| REVISIONS | | |
|-----------|----|------|
| NUMBER | BY | DATE |
| | | |
| | | |
| | | |



**LANSING MUNICIPAL AIRPORT
LANSING, ILLINOIS**

PARTIAL PARALLEL TAXIWAY TO RUNWAY 18/36

**SITE PLAN/HORIZONTAL
AND VERTICAL CONTROL PLAN**

© Copyright CMT, Inc.

CMT
CRAWFORD, MURPHY & TILLY, INC.
CONSULTING ENGINEERS
License No. 194-000613

Lansing Municipal
airport

| | |
|-----------------|----------------|
| DESIGN BY: | ARM |
| DRAWN BY: | JRO |
| CHECKED BY: | ARM |
| APPROVED BY: | ARM |
| DATE: | 02/27/09 |
| JOB No: | 05297-02 |
| IL. PROJECT: | IGQ-3681 |
| A.I.P. PROJECT: | 3-17-0121-B26 |
| SHEET | 3 OF 30 SHEETS |