

REVISIONS

NUMBER	BY	DATE

0 1 2
THIS BAR IS EQUAL TO 2"
AT FULL SCALE (34X22).

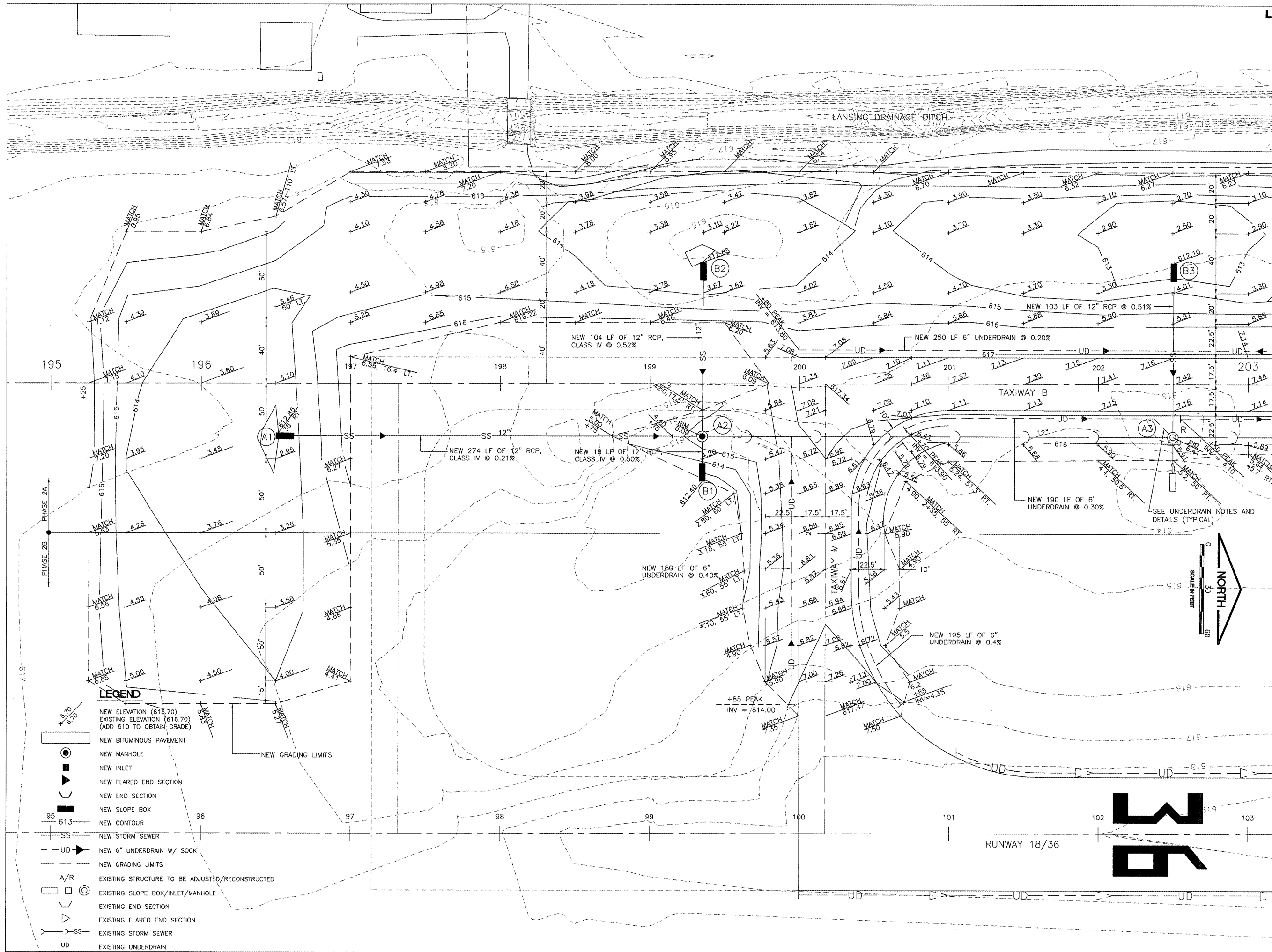
LANSING MUNICIPAL AIRPORT
LANSING, ILLINOIS
PARTIAL PARALLEL TAXIWAY TO RUNWAY 18/36

GRADING AND DRAINAGE PLAN -
SHEET 1

© Copyright CMT, Inc.



DESIGN BY:	ARM
DRAWN BY:	JRO
CHECKED BY:	ARM
APPROVED BY:	ARM
DATE:	02/27/09
JOB No:	05297-02
IL. PROJECT: IGQ-3681 A.I.P. PROJECT: 3-17-0121-B26	
SHEET	15 OF 30 SHEETS



MATCHLINE STA. 203+25



SCALE IN FEET
0 30 60

LEGEND

- NEW ELEVATION (615.70)
EXISTING ELEVATION (616.70)
(ADD 610 TO OBTAIN GRADE)
- NEW BITUMINOUS PAVEMENT
- NEW MANHOLE
- NEW INLET
- NEW FLARED END SECTION
- NEW END SECTION
- NEW SLOPE BOX
- NEW CONTOUR
- NEW STORM SEWER
- NEW 6" UNDERDRAIN W/ SOCK
- NEW GRADING LIMITS
- EXISTING STRUCTURE TO BE ADJUSTED/RECONSTRUCTED
- EXISTING SLOPE BOX/INLET/MANHOLE
- EXISTING END SECTION
- EXISTING FLARED END SECTION
- EXISTING STORM SEWER
- EXISTING UNDERDRAIN