

WH009



CRAWFORD, MURPHY & TILLY, INC.  
CONSULTING ENGINEERS

Whiteside County **AIRPORT**  
JOSEPH H. BITTORF FIELD

Whiteside County  
Airport

Sterling / Rock Falls,  
Illinois

Whiteside County  
Airport

AIP: 3-17-0098- B16  
SQI-3910

REHABILITATE  
SOUTH TERMINAL  
APRON

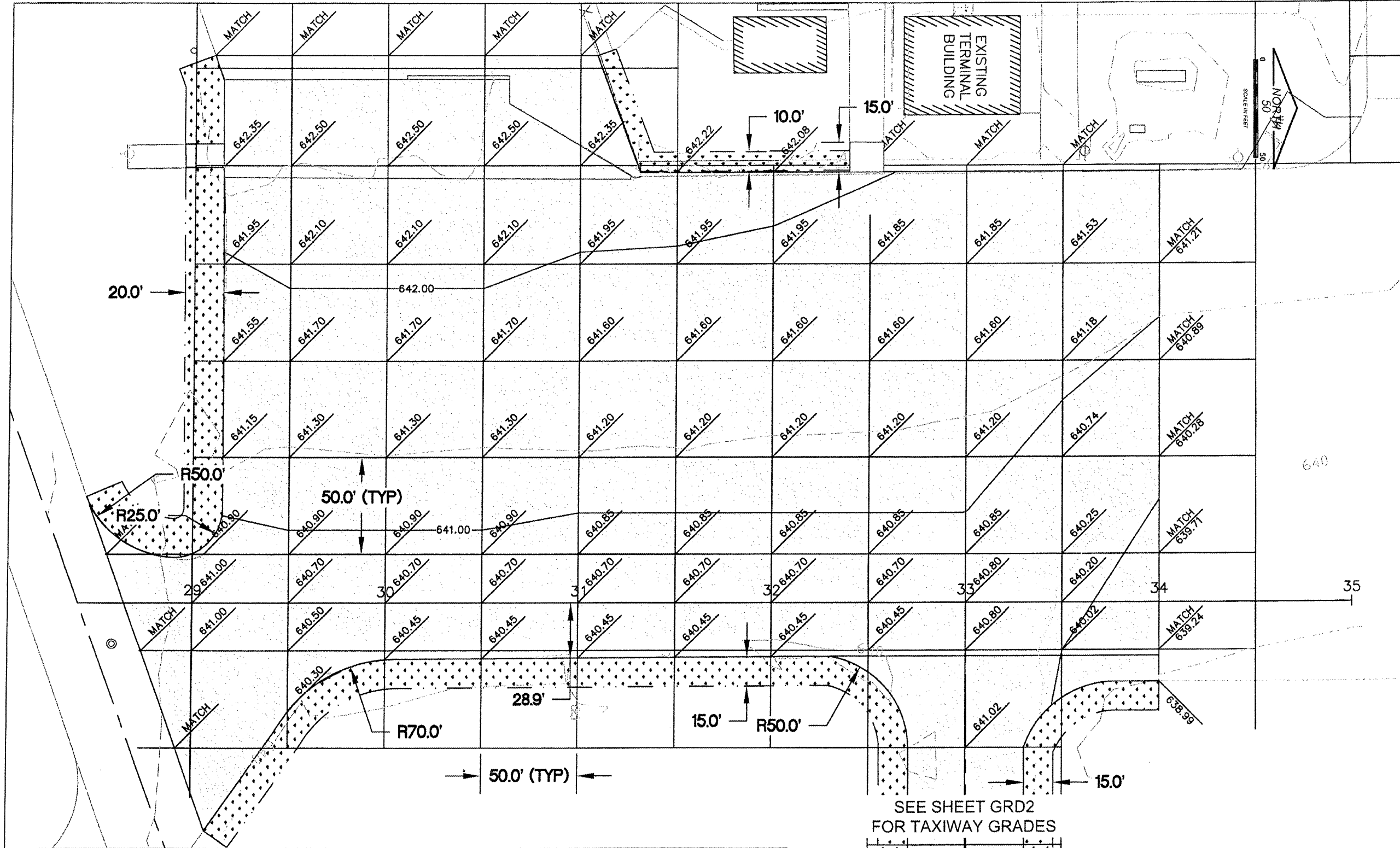
Revisions		
No.	Date	Description

0 1  
THIS BAR IS EQUAL TO 1"  
AT FULL SCALE (17 X 11).

DESIGN BY: CMT- RFD  
 DRAWN BY: CMT- RFD  
 CHECKED BY: CMT- RFD  
 APPROVED BY: JGP  
 DATE: 04.17.09  
 JOB No: 09292-02-00

**APRON  
GRADING PLAN  
(GRD1)**

8  
SHEET 8 OF 11 SHEETS



SEE SHEET GRD2  
FOR TAXIWAY GRADES

**LEGEND**

- NEW IMPROVEMENTS
- NEW LANDSCAPING LIMITS
- EXISTING CONTOUR
- NEW CONTOUR
- NEW ELEVATION
- NEW LIMITS OF GRADING

**APRON GRADING PLAN**