

STATE OF ILLINOIS
 DEPARTMENT OF TRANSPORTATION
 DIVISION OF HIGHWAYS

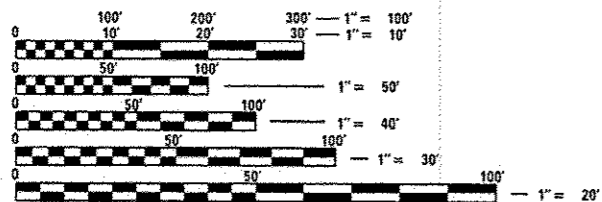
**PROPOSED
 HIGHWAY PLANS**

FOR INDEX OF SHEETS, SEE SHEET NO. 2

THE IMPROVEMENT IS LOCATED IN
 THE VILLAGES OF HINSDALE, BEDFORD PARK &
 BRIDGEVIEW

1) F.A.P. ROUTE 311: US 34 (OGDEN AVE.)
 OVER CREEK (SN 022-0224)
 2) F.A.U. ROUTE 3565: ILL 171 (ARCHER AVE.)
 OVER CREEK (SN 016-2157)
 SECTION: 2014-055 I
 CULVERT REPAIRS
 DUPAGE & COOK COUNTIES
 C-91-460-14

**SEE LOCATION MAPS
 SHEET 3**



FULL SIZE PLANS HAVE BEEN PREPARED USING STANDARD
 ENGINEERING SCALES. REDUCED SIZED PLANS WILL NOT
 CONFORM TO STANDARD SCALES. IN MAKING MEASUREMENTS
 ON REDUCED PLANS, THE ABOVE SCALES MAY BE USED.

J.U.L.I.E.
 JOINT UTILITY LOCATION INFORMATION FOR EXCAVATION
 1-800-892-0123
 OR 811

PROJECT ENGINEER J. ALAIN MIDY (847) 221-3056
 PROJECT MANAGER ISSAM RAYYAN (847) 705-4178

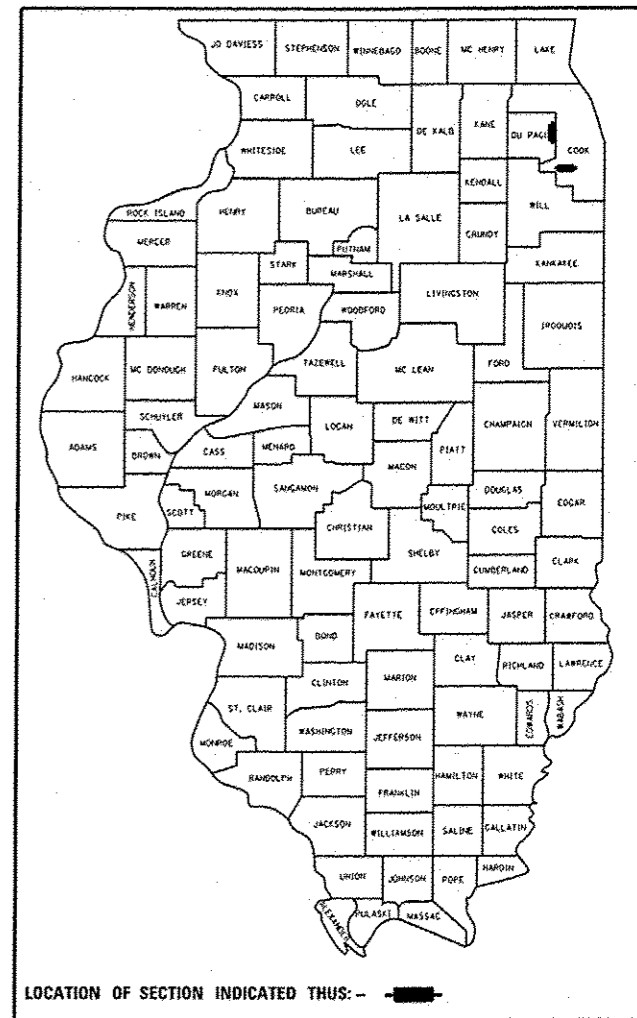
CONTRACT NO. 60Y71

F.A. RTE.	SECTION	COUNTY	TOTAL SHEETS	SHEET NO.
•	2014-055-I	**	9	1
		ILLINOIS	CONTRACT NO. 60Y71	

* 1) FAP 311
 2) FAU 3565

** 1) DUPAGE
 2) COOK

D-91-460-14



STATE OF ILLINOIS
 DEPARTMENT OF TRANSPORTATION
 DIVISION OF HIGHWAYS

SUBMITTED March 31 20 15

John F. ...
 DEPUTY DIRECTOR OF HIGHWAYS, REGION ENGINEER

May 8 20 15
John D. Baranzelli P.E.
 ENGINEER OF DESIGN AND ENVIRONMENT

May 8 20 15
Onor Osman P.E.
 DIRECTOR OF HIGHWAYS, CHIEF ENGINEER

**PRINTED BY THE AUTHORITY
 OF THE STATE OF ILLINOIS**

INDEX OF SHEETS

1. COVER SHEET
2. INDEX OF SHEETS, STANDARDS, GENERAL NOTES
3. EXISTING CULVERT LOCATIONS
4. SUMMARY OF QUANTITIES
- 5-6. CULVERT REPAIR DETAILS
7. ARTERIAL ROAD INFORMATION SIGN (TC-22)
8. EXISTING PLAN (S.N. 022-0224)
9. EXISTING PLAN (S.N. 016-2157)

STATE STANDARDS

701106-02 OFF-ROAD OPERATIONS, MULTILANE, MORE THAN 15' AWAY

701901-04 TRAFFIC CONTROL DEVICES

GENERAL NOTES

BEFORE STARTING ANY EXCAVATION, THE CONTRACTOR SHALL CALL "J.U.L.I.E." AT (800) 892-0123 OR 811 FOR FIELD LOCATIONS OF BURIED ELECTRIC, TELEPHONE AND GAS UTILITIES. 48 HOUR NOTIFICATION IS REQUIRED.

THE CONTRACTOR SHALL COORDINATE CONSTRUCTION ACTIVITIES WITH UTILITY COMPANIES, AND THE VILLAGES OF HINSDALE, BEDFORD PARK & BRIDGEVIEW.

THE CONTRACTOR WILL NOT BE ALLOWED TO SET UP A YARD OR FIELD OFFICE ON STATE PROPERTY WITHOUT WRITTEN PERMISSION FROM THE DEPARTMENT.

IT SHALL BE THE CONTRACTOR'S RESPONSIBILITY TO VERIFY ALL DIMENSIONS AND CONDITIONS EXISTING IN THE FIELD PRIOR TO CONSTRUCTION AND ORDERING OF MATERIALS.

THE CONTRACTOR SHALL CONTACT THE DISTRICT ONE TRAFFIC CONTROL SUPERVISOR AT (847)705-4470 A MINIMUM OF 72 HOURS IN ADVANCE OF BEGINNING WORK.

THESE PLANS HAVE BEEN PREPARED FROM NOTES RECEIVED FROM THE BUREAU OF MAINTENANCE BRIDGE SECTION.

THE CONTRACTOR SHALL BE REQUIRED TO PROVIDE ACCESS TO ABUTTING PROPERTY AT ALL TIMES DURING THE CONSTRUCTION OF THIS PROJECT.

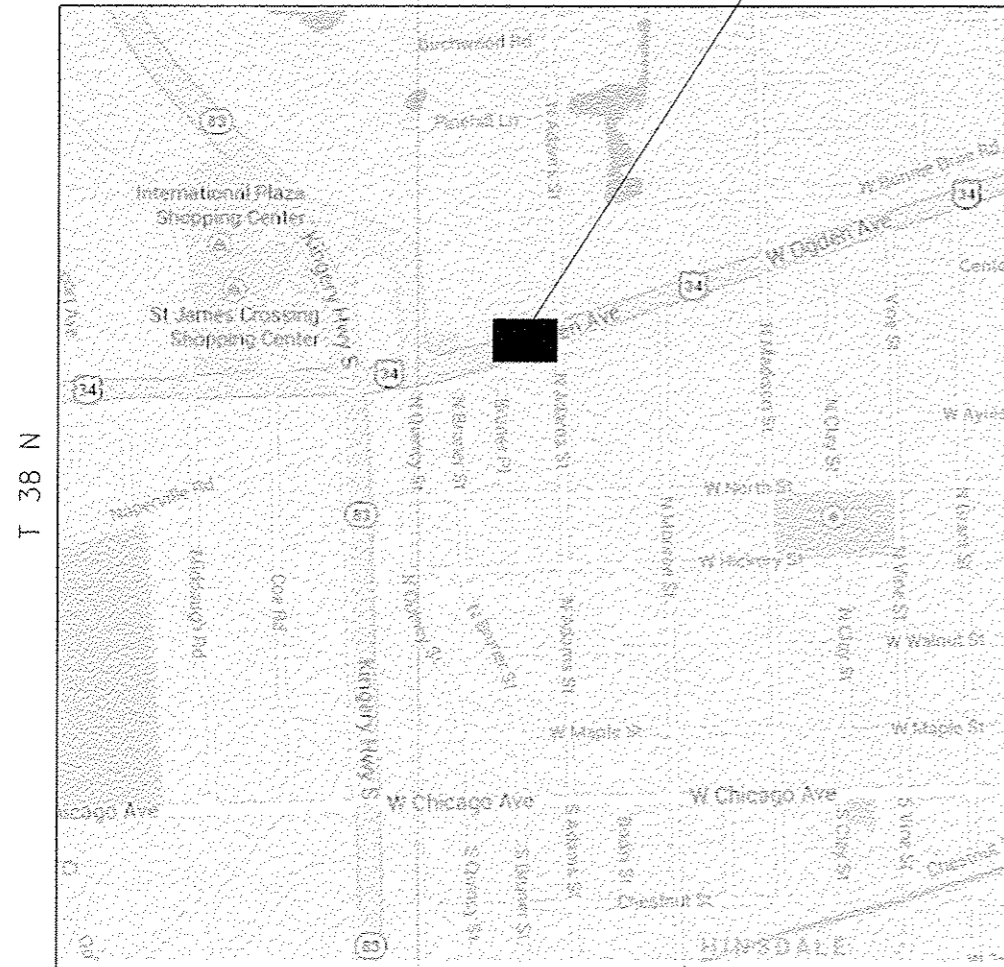
DO NOT SCALE PLANS FOR CONSTRUCTION DIMENSIONS.

THIS PROJECT REQUIRES AN US ARMY CORPS OF ENGINEERS 404 PERMIT. THE PERMIT ISSUED TO THE DEPARTMENT DOES NOT COVER THE INSTREAM WORK BY THE CONTRACTOR. THEREFORE AFTER AWARD, THE CONTRACTOR WILL NEED TO SUBMIT THE WORK PLAN TO THE CORPS. THE CORPS WILL NOT BE PROVIDING AN APPROVAL UNLESS STATED OTHERWISE IN THE PERMIT AND IN STREAM WORK CAN COMMENCE AT THE CONTRACTOR'S DISCRETION. GUIDELINES ON ACCEPTABLE IN STREAM WORK TECHNIQUES CAN BE FOUND ON THE CORPS WEBSITE: [HTTP://WWW.LRC.USACE.ARMY.MIL/](http://www.lrc.usace.army.mil/).

FILE NAME *	USER NAME * guillaumafp	DESIGNED -	REVISED -	STATE OF ILLINOIS DEPARTMENT OF TRANSPORTATION	INDEX OF SHEETS, STATE STANDARDS, AND GENERAL NOTES	F.A. RTE.	SECTION	COUNTY	TOTAL SHEETS	SHEET NO.
er:\pr-work\p\dot\guillaumafp\d0406119\0	46014-ahs-plan.dgn	DRAWN -	REVISED -			F.A.P. 311	2014-055-1	COOK	9	2
	PLOT SCALE * 100.0000 ' / in.	CHECKED -	REVISED -			F.A.U. 2562				
Default	PLOT DATE * 3/31/2015	DATE -	REVISED -			SCALE:	SHEET 2 OF 9 SHEETS	STA.	TO STA.	ILLINOIS FED. AID PROJECT CONTRACT NO. 60Y71

LOCATION NO. 1: US 34 (OGDEN AVE.)
OVER CREEK (SN 022-0224)
VILLAGE OF HINSDALE

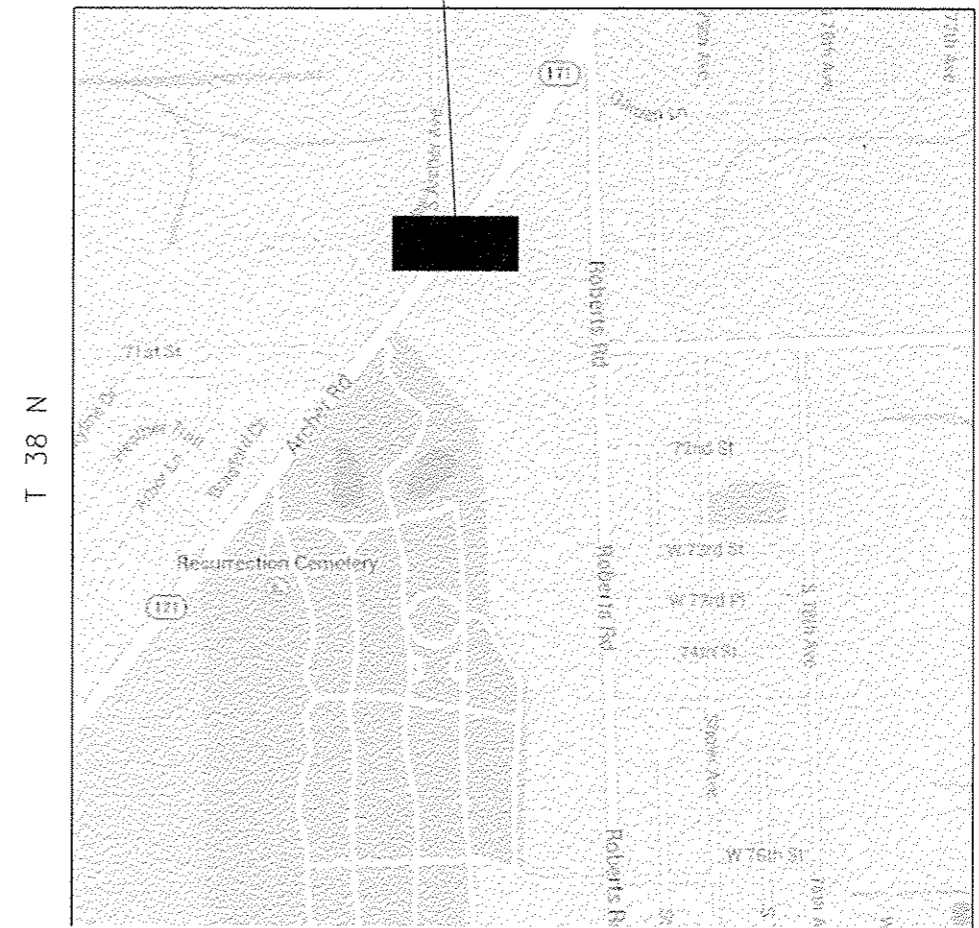
R 11 E



DOWNERS GROVE TOWNSHIP

LOCATION NO. 2: ILL 171 (ARCHER AVE.)
OVER CREEK (SN 016-2157)
VILLAGES OF BEDFORD PARK
& BRIDGEVIEW

R 12 E



LYONS TOWNSHIP



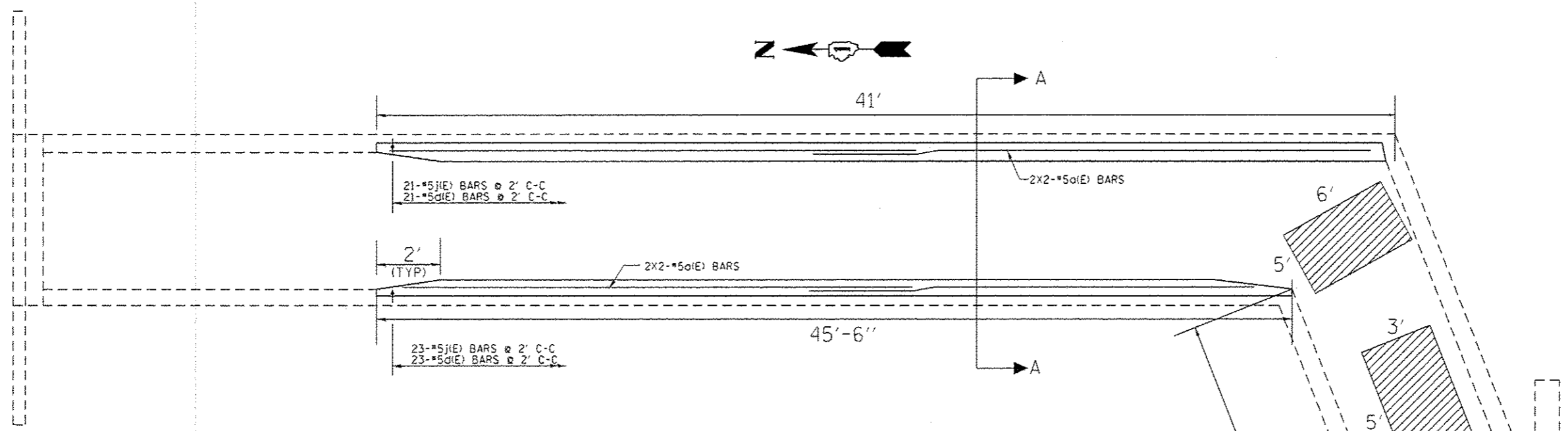
TRAFFIC DATA

LOCATION NO. 1: US 34 (OGDEN AVE.) OVER CREEK (SN 022-0224)
2013 ADT = 31900
SPEED LIMIT = 35 MPH

LOCATION NO. 2: ILL 171 (ARCHER AVE.) OVER CREEK (SN 016-2157)
2013 ADT = 26300
SPEED LIMIT = 45 MPH

FILE NAME =	USER NAME = guilleumf	DESIGNED -	REVISED -	STATE OF ILLINOIS DEPARTMENT OF TRANSPORTATION	LOCATION MAPS				F.A. RTE.	SECTION	COUNTY	TOTAL SHEETS	SHEET NO.
et:\p\work\p\ridot\guilleumf\p\0406119\0	40014-ehi-plan.dgn	DRAWN -	REVISED -		CULVERT LOCATION NUMBERS 1 & 2				7.4P 311	2014-055-1	COPAGE	9	3
Default		CHECKED -	REVISED -		SCALE:	SHEET 3	OF 9 SHEETS	STA.	TO STA.	BOOK	CONTRACT NO. 60Y71		
	PLOT SCALE = 100.0000 / in.	DATE -	REVISED -		ILLINOIS FED. AID PROJECT								

SUMMARY OF QUANTITIES			URBAN 100% STATE TOTAL QUANTITIES	FAP CONSTRUCTION TYPE CODE		SUMMARY OF QUANTITIES				TOTAL QUANTITIES	CONSTRUCTION TYPE CODE					
CODE NO	ITEM	UNIT		0040 S.N. 022-0224 DUPAGE COUNTY	004D S.N. 016-2157 COOK COUNTY	CODE NO	ITEM	UNIT								
28100105	STONE RIPRAP, CLASS A3	SQ YD	15		15											
50300225	CONCRETE STRUCTURES	CU YD	3.9	2.4	1.5											
50300300	PROTECTIVE COAT	SQ YD	30.7	18.7	12.0											
50800205	REINFORCEMENT BARS, EPOXY COATED	POUND	580	360	220											
67000400	ENGINEER'S FIELD OFFICE, TYPE A	CAL MO	3	1.5	1.5											
67100100	MOBILIZATION	L SUM	1	0.5	0.5											
Z0012755	STRUCTURAL REPAIR OF CONCRETE (DEPTH GREATER THAN 5 (INCHES))	SQ FT	142	87	55											
Z0016002	DECK SLAB REPAIR (FULL DEPTH, TYPE II)	SQ YD	5	5												
Z0030850	TEMPORARY INFORMATION SIGNING	SQ FT	102.8	51.4	51.4											



SN 016-2157 & SN 022-0224

BAR LIST

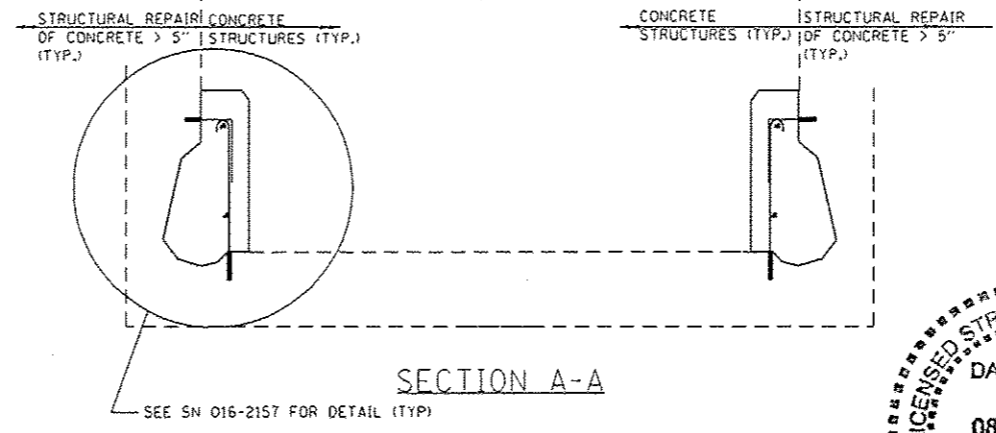
BAR	NO.	SIZE	LENGTH	SHAPE
a(E)	8	#5	23'-0"	—
a1(E)	2	#5	30'-4"	—
a2(E)	2	#5	16'-0"	—
a3(E)	2	#5	5'-0"	—
j(E)	74	#5	2'-1"	C
d(E)	74	#5	1'-6"	□

BARS INDICATED THUS 4X2 - #5 etc INDICATES 4 LINES OF BARS WITH 2 LENGTH PER LINE

MINIMUM BAR LAP FOR #5 BAR: 2'-0"

 — DECK SLAB REPAIR (FULL DEPTH, TYPE II)

 — CONCRETE STRUCTURES



BILL OF MATERIAL (S.N. 022-0224)

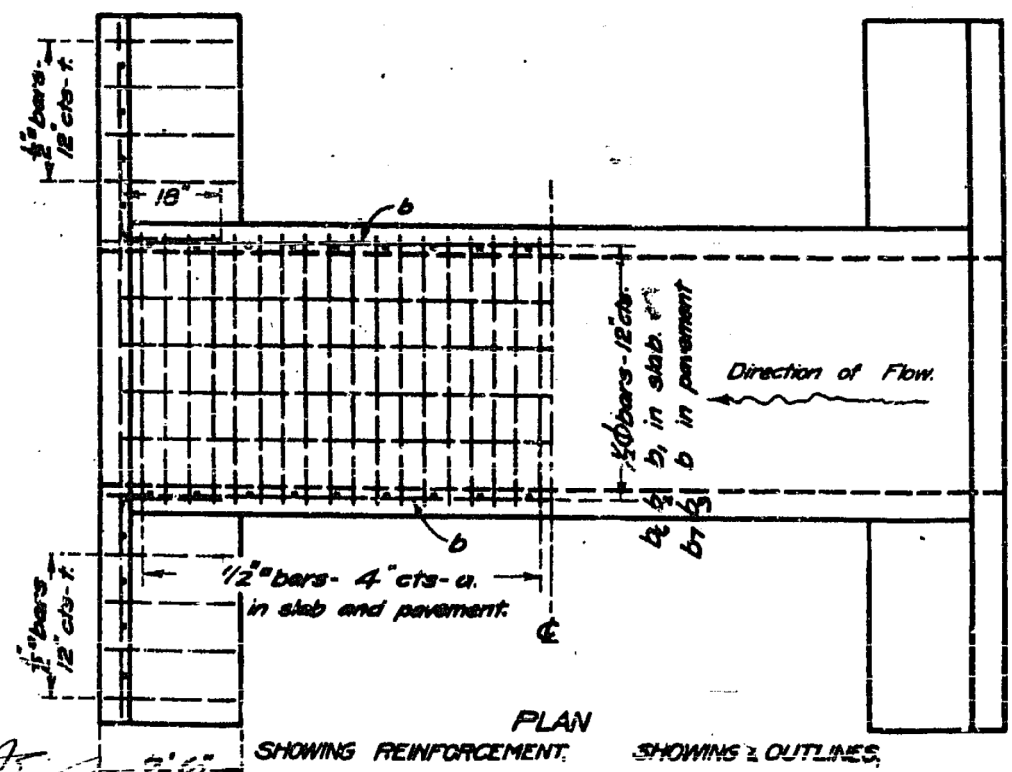
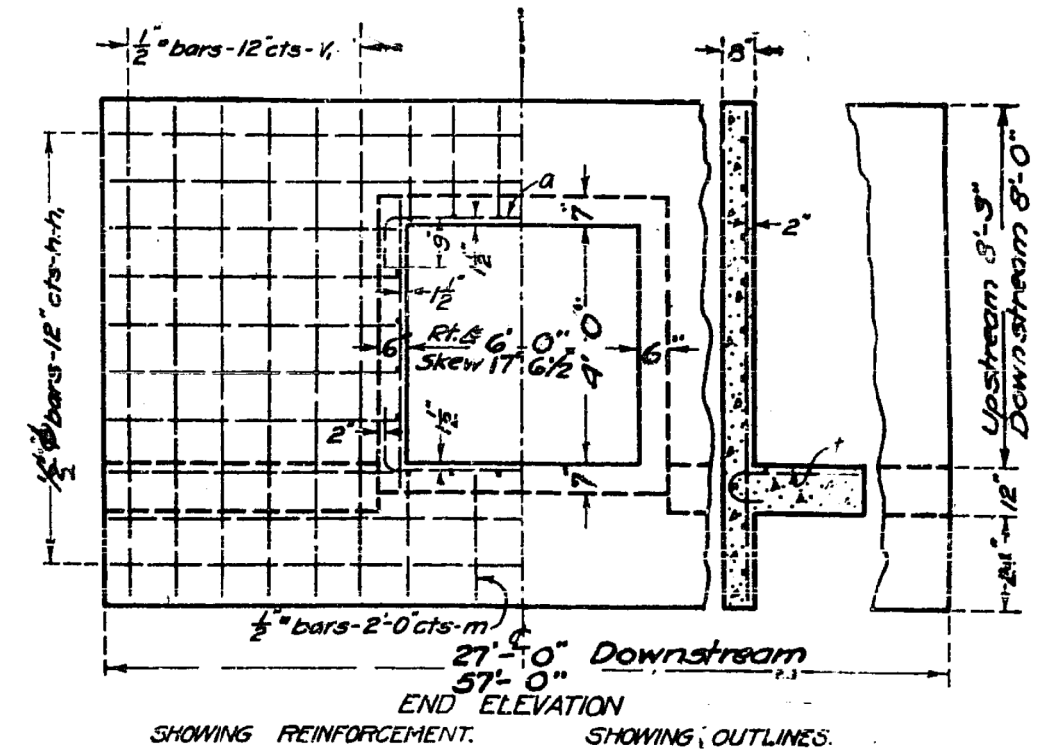
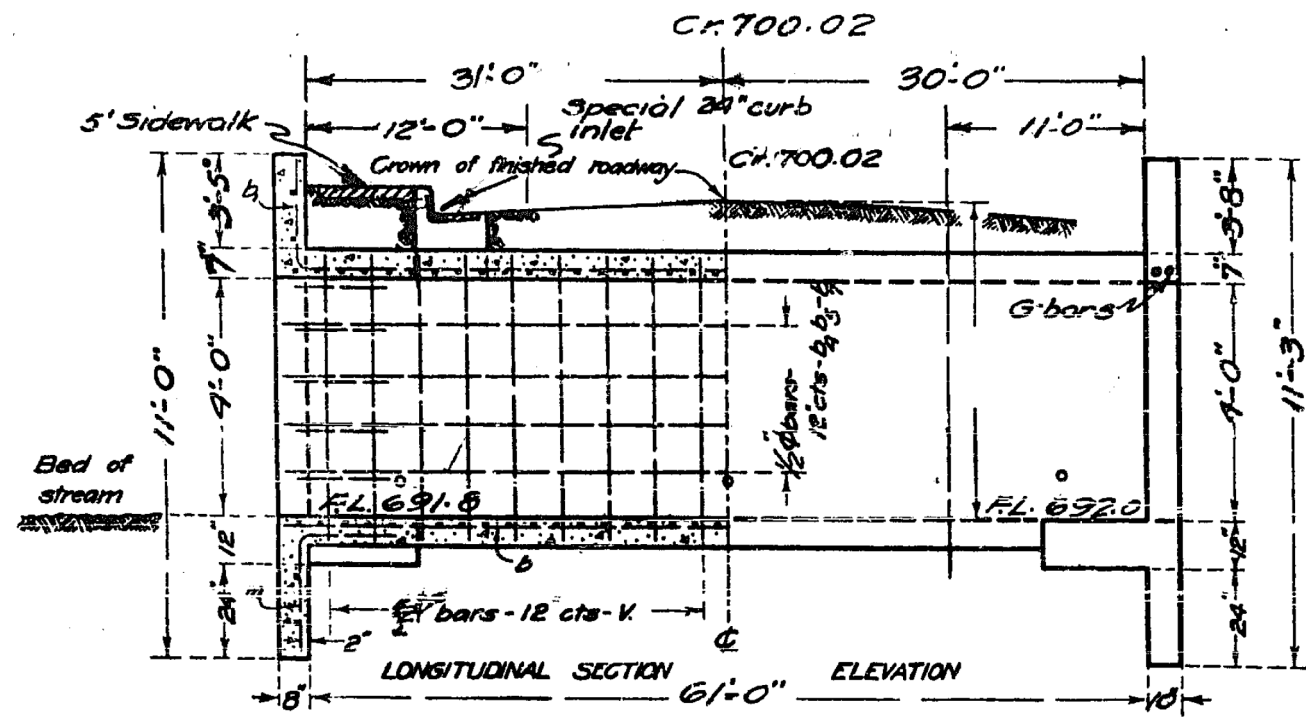
ITEM	UNIT	TOTAL
PROTECTIVE COAT	SQ.YD.	18.7
STRUCTURAL REPAIR OF CONCRETE (DEPTH GREATER THAN 5 INCHES)	SQ.FT.	87.0
DECK SLAB REPAIR (FULL DEPTH, TYPE II)	SQ.YD.	5.0
CONCRETE STRUCTURES	CU.YD.	2.40
REINFORCEMENT BARS, EPOXY COATED	POUND	360



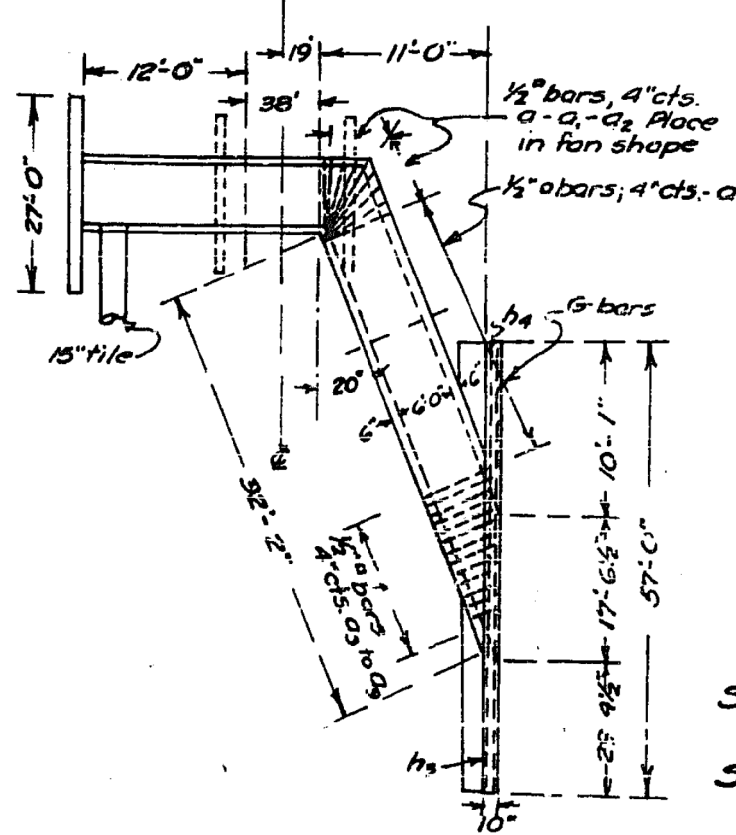
David Carl Puzey 5/1/15
Expires 11/30/16

NOTE:

CONCRETE STRUCTURES SHALL USE THE SAME MATERIAL AND BE POURED AT THE SAME TIME AS THE STRUCTURAL REPAIR OF CONCRETE > 5".



Note - Use 'm' bars in downstream headwall only.
Box is designed for no fill.
Maximum clearance = 7'-6"



BILL OF MATERIAL

Bars	No.	Size	Length
V	80	1/2" φ	5'-0"
V ₁	58	1/2"	10'-6"
h ₂	15	1/2" φ	20'-0"
h	12	1/2" φ	12'-0"
h ₁	10	1/2" φ	14'-6"
h ₃ /h ₄	12/6	1/2" φ	11'-0"
a	192	1/2" φ	8'-9"
b/b ₂	6/6	1/2" φ	15'-5.0"
b ₁ /b ₂	6/6	1/2" φ	15'-6.0"
b ₄ /b ₅	9/8	1/2" φ	11'-4.0"
t	38	1/2"	4'-0"
m	8	1/2"	5'-0"
b ₆	6	1/2" φ	16'-0"
b ₇	14	1/2" φ	12'-6"
Steel - Lbs.			4510
Concrete - Cu. Yds.			46.0

Class X concrete to be used throughout
Proportions - 1-2-4

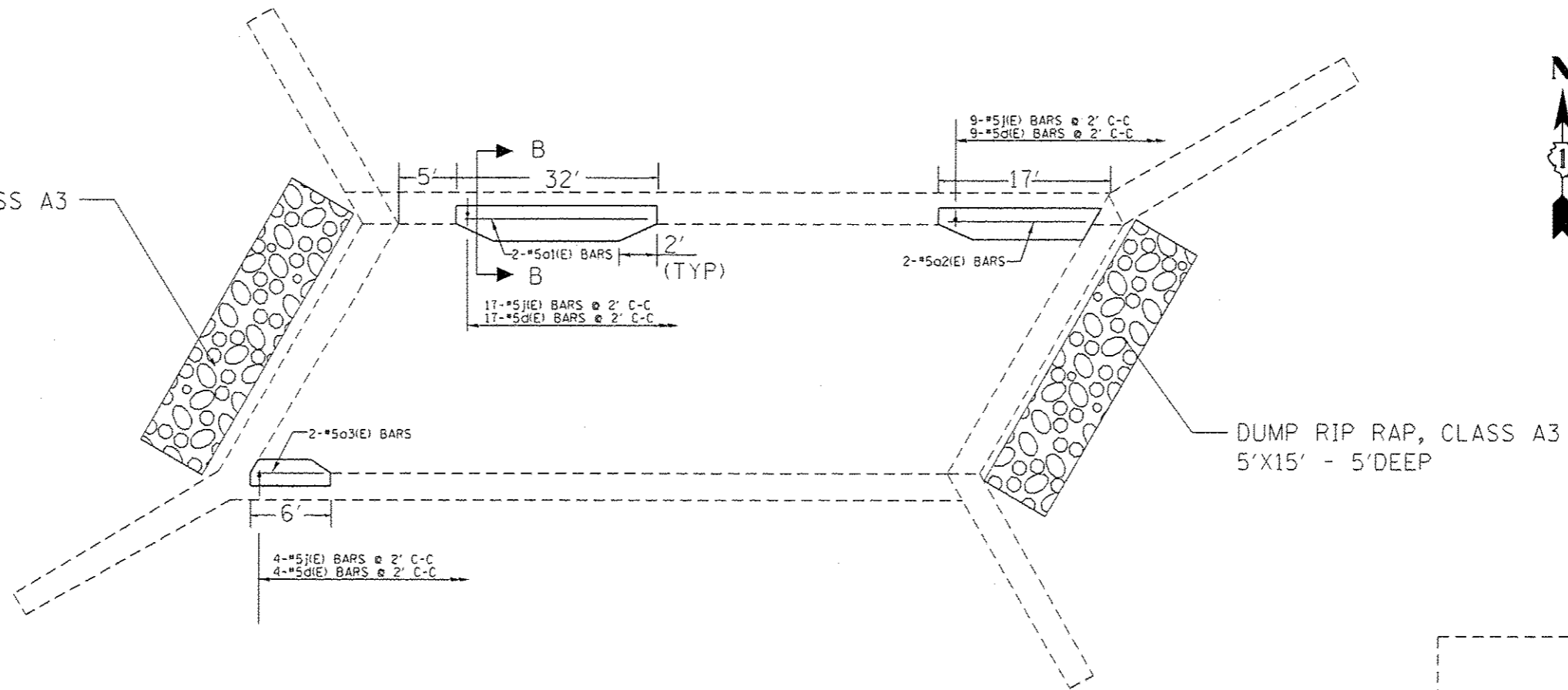
Passport
 Eng'r. of Design
 STANDARD CHECKED - W.A. J. J. J.
 SPECIAL ASSEMBLED - M.A. J. J. J.
 DRAWING BY
 M.F. Burch
 BRIDGE ENGINEER
 STATE ENGINEER

Bars No.	Size	Length	Bars No.	Size	Length		
a ₁	24	1/2" φ	9'-0"	a ₆	12	1/2" φ	5'-6"
a ₂	12	1/2" φ	9'-9"	a ₇	12	1/2" φ	9'-0"
a ₃	12	1/2" φ	8'-0"	a ₈	12	1/2" φ	4'-0"
a ₄	12	1/2" φ	7'-0"	a ₉	12	1/2" φ	3'-3"
a ₅	12	1/2" φ	6'-6"	G	4	1" φ	26'-0"

SPECIAL CULVERT DESIGN
 STATION 1015+00
 S.B.I. RTE 18 SECT. 9-Y
 DU PAGE CO.

FOR INFORMATION ONLY

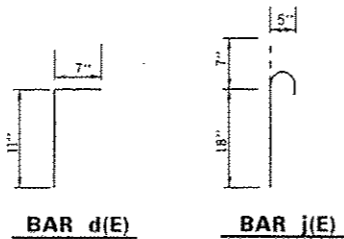
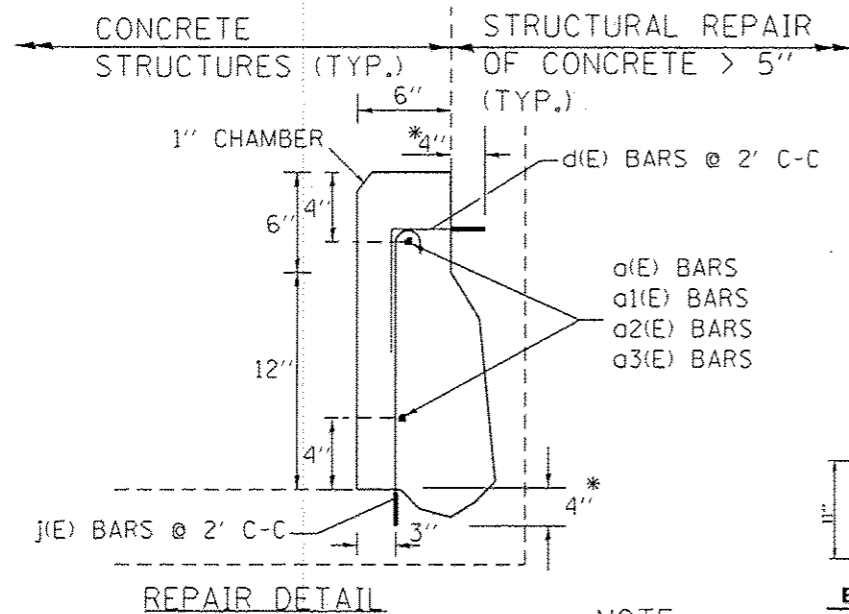
DUMP RIP RAP, CLASS A3
5'X12' - 3'DEEP



* EPOXY GROUT #5 d(E) & j(E) BARS IN 7/8" DIA. DRILLED HOLES. SEE ART. 584 STD. SPECS. COST INCLUDED WITH REINFORCED BARS, EPOXY COATED

BILL OF MATERIAL (S.N. 016-2157)

ITEM	UNIT	TOTAL
PROTECTIVE COAT	SQ.YD.	12.0
CONCRETE STRUCTURES	CU.YD.	1.50
STRUCTURAL REPAIR OF CONCRETE (DEPTH GREATER THAN 5 INCHES)	SQ.FT.	55.0
STONE RIPRAP, CLASS A3	SQ.YD.	15.0
REINFORCEMENT BARS, EPOXY COATED	POUND	220

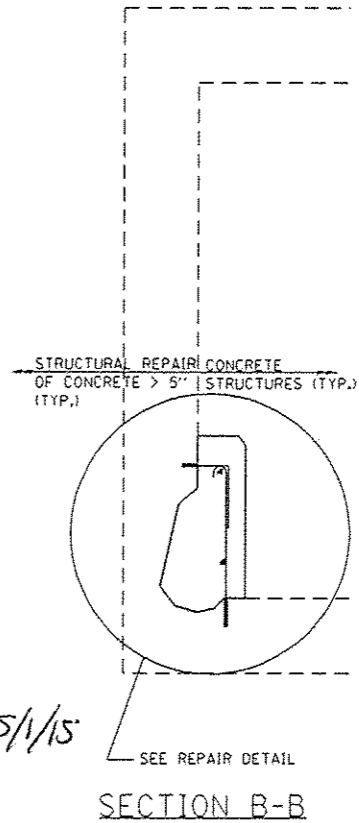


NOTE:

CONCRETE STRUCTURES SHALL USE THE SAME MATERIAL AND BE POURED AT THE SAME TIME AS THE STRUCTURAL REPAIR OF CONCRETE > 5".



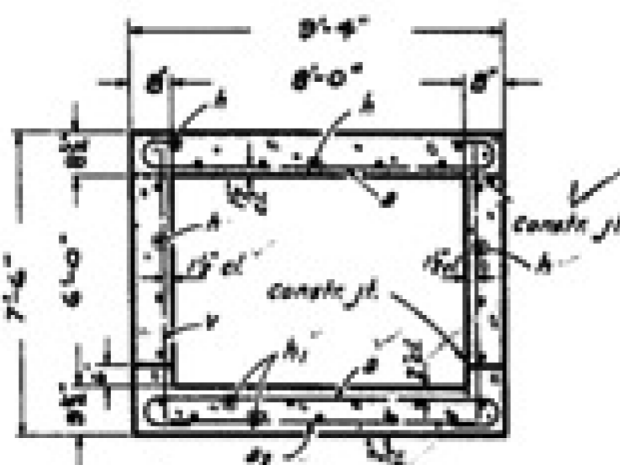
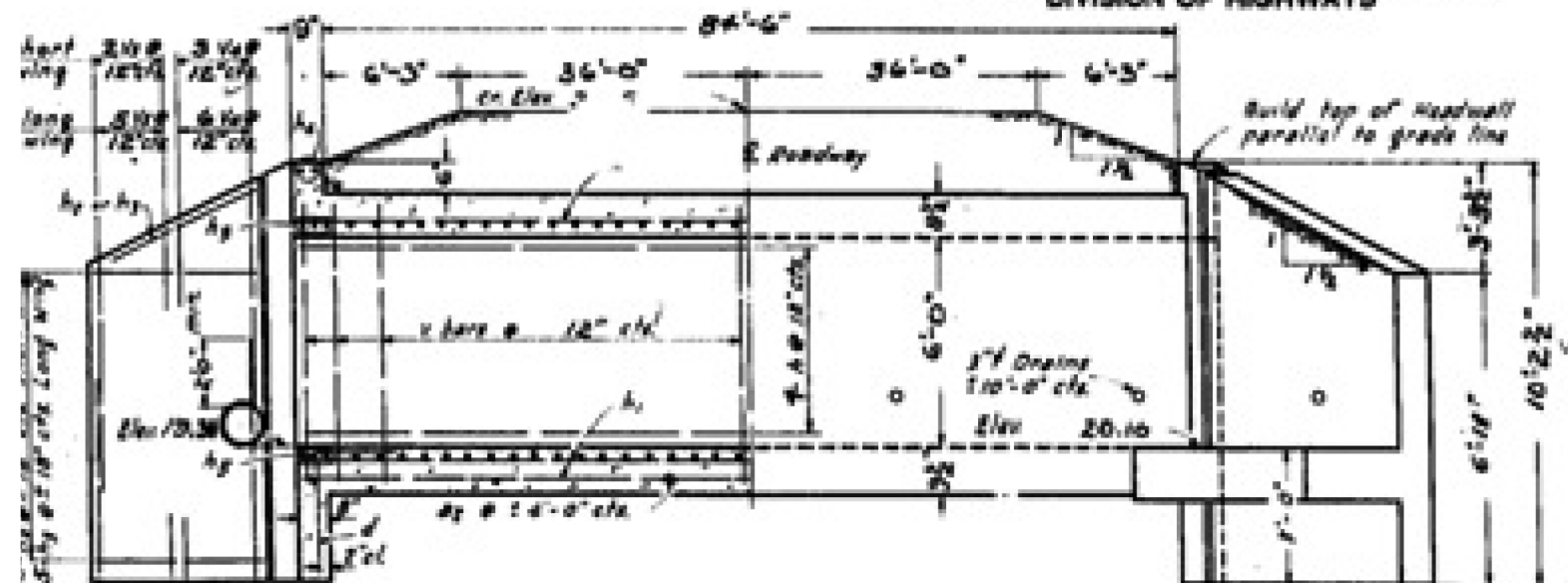
David Carl Puzey 5/1/15
Expires 11/30/16



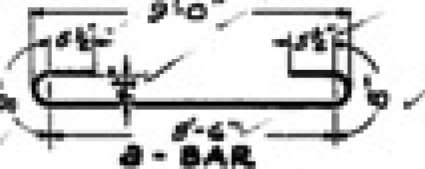
— CONCRETE STRUCTURES

DIVISION OF HIGHWAYS

REVISIONS: []



SECTION THRU BARREL



B - BAR

BILL OF MATERIAL

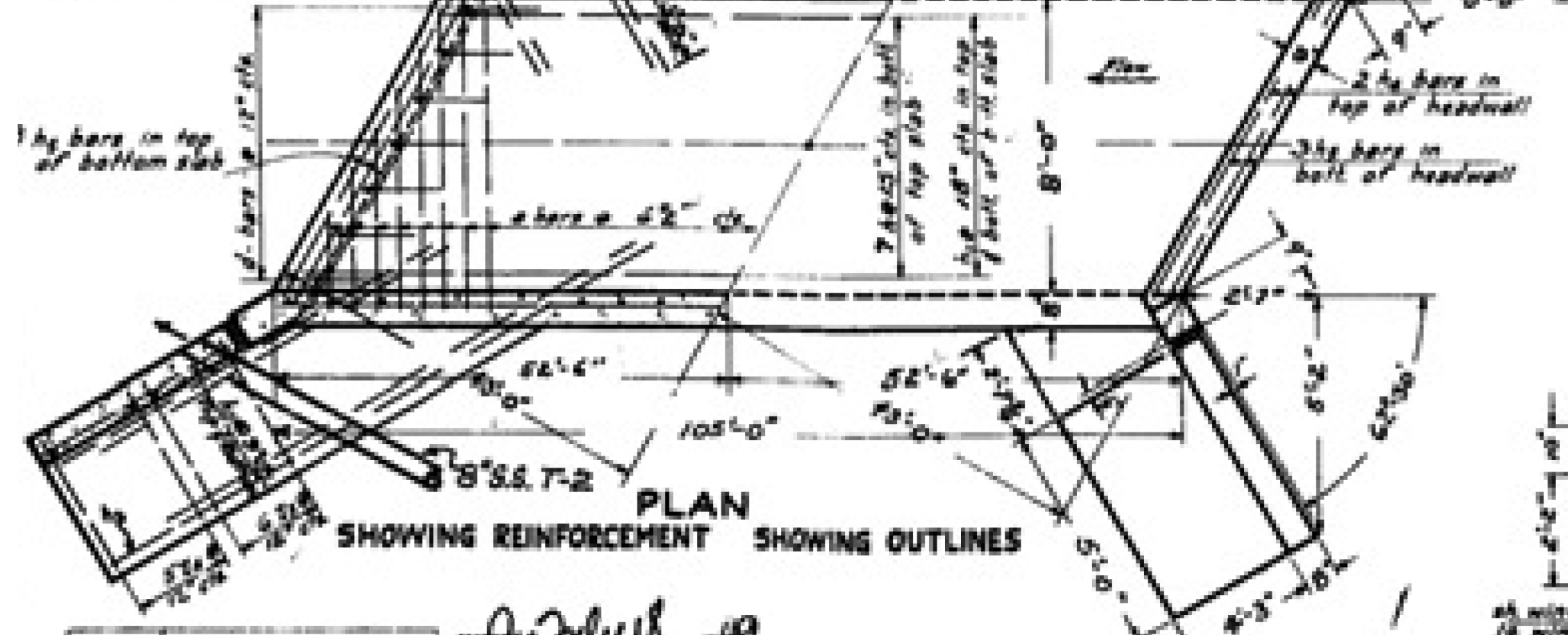
BAR	NO.	SIZE	LENGTH
B	382	4" #	10'-0"
B ₁	27	1"	8'-3"
B ₂	24	4" #	14'-0"
d	16	1"	4'-6"
A	68	1"	27'-6"
A ₁	52	5" #	27'-6"
A ₂	16	1"	4'-0"
A ₃	16	1"	10'-0"
A ₄	4	4" #	10'-0"
A ₅	12	4" #	10'-0"
A ₆	8	4" #	8'-0"
V	218	1/2"	7'-0"
V ₁	18	1/2"	5'-0"
V ₂	14	1/2"	5'-0"
V ₃	18	1/2"	5'-0"
V ₄	14	1/2"	5'-0"
Z ₁	6	1/2"	7'-0"
Z ₂	4	1/2"	7'-0"
Z ₃	12	1/2"	7'-0"
Z ₄	10	1/2"	7'-0"

Class X concrete c/w 48.4
Reinforcement bars Lbs 10,940

DETAILS OF PROPOSED 6'X8' BOX CULVERT AT STA. 65+18

Note: Culvert must be constructed in such a manner that the road can be kept open to traffic at all times.

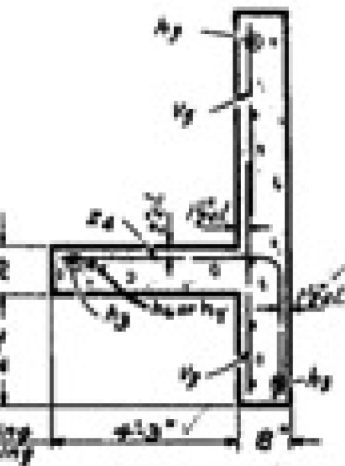
NOTE -
B-bars in skew portion of slab shall be ordered full length & cut to fit. Balance of bar to be used in opposite end of culvert.



PLAN SHOWING REINFORCEMENT SHOWING OUTLINES

Z₁ TO Z₄ BARS

d - BAR



SECTION A-A

GENERAL NOTES

Class X concrete shall be used thru-out. Exposed edges shall be beveled 1/4". For Backfilling and embankment, see standard specifications. Tilt head of "B" bars, if necessary, to obtain

f_y = 60,000 #/sq
f_c = 4,000 #/sq
n = 10

DESIGNED	REVISION
DRAWN	REVISION
CHECKED	REVISION
DATE	REVISION

July 18 1949
G. S. WARD

FOR INFORMATION ONLY



NOTES:

1. USE BLACK LETTERING ON ORANGE BACKGROUND.
2. ERECT SIGNS IN ADVANCE OF THE LOCATION FOR THE "ROAD CONSTRUCTION AHEAD" SIGN AT LOCATIONS AS DIRECTED BY THE ENGINEER.
3. ERECT SIGN ① WITH INSTALLED PANEL ② ONE WEEK PRIOR TO THE START OF CONSTRUCTION.
4. REMOVE PANEL ② SOON AFTER THE START OF CONSTRUCTION.
5. SEE SPECIAL PROVISION FOR "TEMPORARY INFORMATION SIGNING" FOR ADDITIONAL INFORMATION.
6. ONE SIGN ASSEMBLY EQUALS 25.70 SQ. FT. (2.3 SQ. M.)
7. SHALL BE PAID FOR AS TEMPORARY INFORMATION SIGNING.

ALL DIMENSIONS ARE IN INCHES (MILLIMETERS) UNLESS OTHERWISE SHOWN.

FILE NAME =	USER NAME = midyja	DESIGNED -	REVISED - R. MIRS 09-15-97
ct:\pwork\pwork\midyja\0406119\014601	-sht-plen.dgn	DRAWN -	REVISED - R. MIRS 12-11-97
	PLOT SCALE = 100.0000' / 1in.	CHECKED -	REVISED - T. RAMMACHER 02-02-99
	PLOT DATE = 3/31/2015	DATE -	REVISED - C. JUCIUS 01-31-07

**STATE OF ILLINOIS
DEPARTMENT OF TRANSPORTATION**

**ARTERIAL ROAD
INFORMATION SIGN**

SCALE: NONE SHEET NO. 9 OF 9 SHEETS STA. TO STA.

F.A. RTE.	SECTION	COUNTY	TOTAL SHEETS	SHEET NO.
F.A.P. 311 F.A.U. 3565	2014-055-I	DUPAGE COOK	9	9
TC-22			CONTRACT NO. 60Y71	
FED. ROAD DIST. NO. 1 ILLINOIS FED. AID PROJECT				