

STATE OF ILLINOIS  
DEPARTMENT OF TRANSPORTATION  
DIVISION OF HIGHWAYS

|           |          |          |                    |           |
|-----------|----------|----------|--------------------|-----------|
| O.R. RTE. | SECTION  | COUNTY   | TOTAL SHEETS       | SHEET NO. |
| 22        | 1112RS-2 | COOK     | 19                 | 1         |
|           |          | ILLINOIS | CONTRACT NO. 62A57 |           |

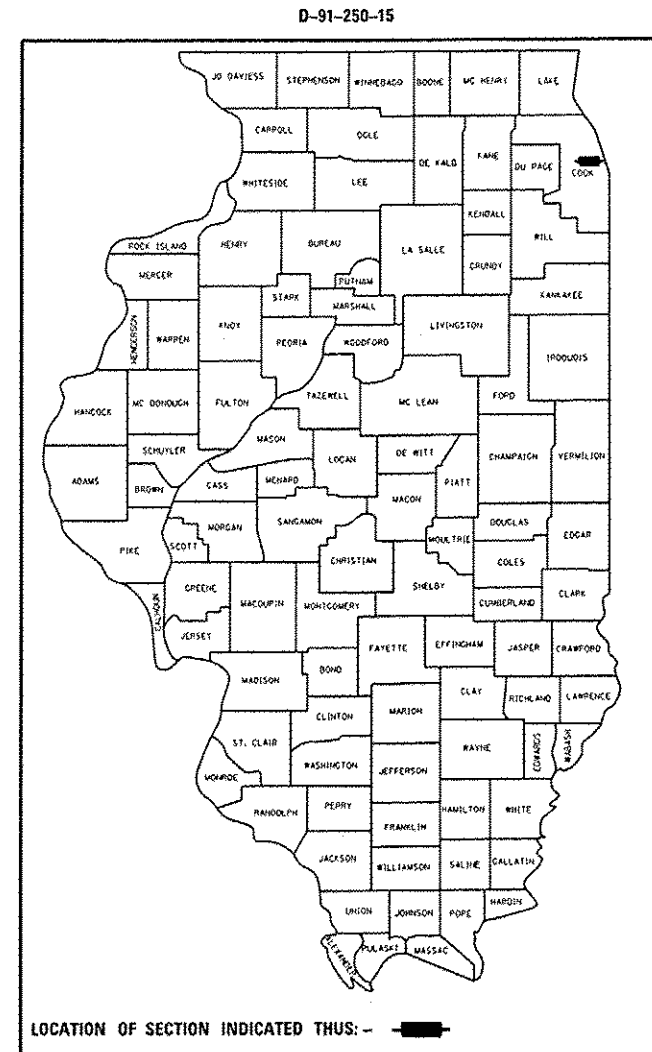
FOR INDEX OF SHEETS, SEE SHEET NO.

IMPROVEMENT LOCATED IN THE CITY OF CHICAGO

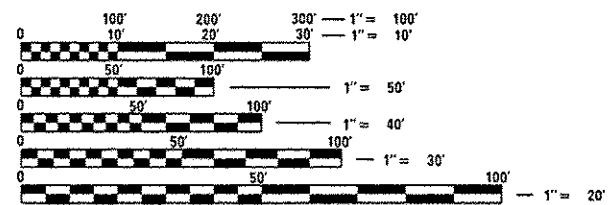
**PROPOSED  
HIGHWAY PLANS**

O.R. ROUTE 22: ERIE STREET  
1) NOBLE ST. TO 0.1 MI E OF OGDEN AVE.  
2) MORGAN ST. TO UNION AVE.  
SECTION 1112RS-2  
RESURFACING, PEDESTRIAN RAMPS  
COOK COUNTY

C-91-250-15



**TRAFFIC DATA**  
ADT = NOT AVAILABLE  
SPEED LIMIT = 30 MPH

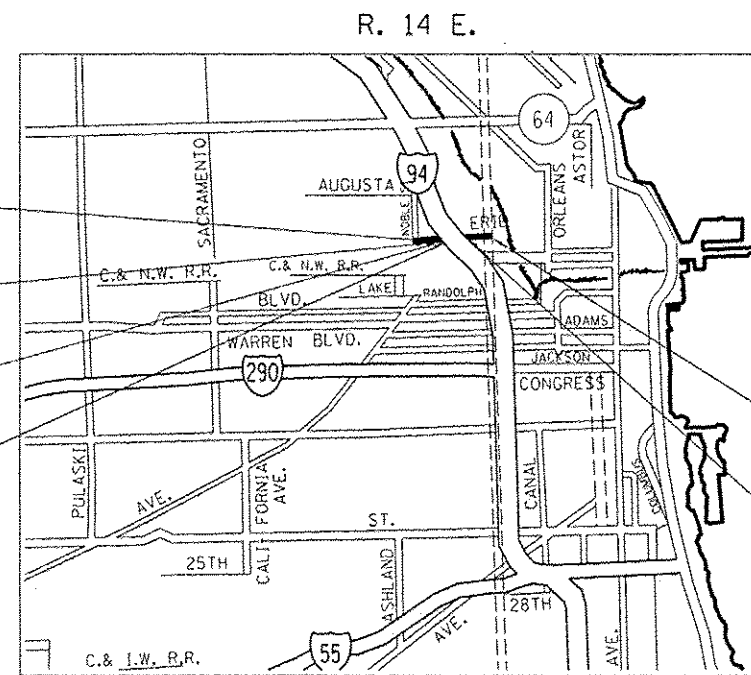


FULL SIZE PLANS HAVE BEEN PREPARED USING STANDARD ENGINEERING SCALES. REDUCED SIZED PLANS WILL NOT CONFORM TO STANDARD SCALES. IN MAKING MEASUREMENTS ON REDUCED PLANS, THE ABOVE SCALES MAY BE USED.

J.U.L.I.E.  
JOINT UTILITY LOCATION INFORMATION FOR EXCAVATION  
1-800-892-0123  
OR 811

OMISSIONS  
STA 201+81 TO STA 204+45

- LOCATION 1  
IMPROVEMENT BEGINS  
STA. 13+71
- LOCATION 1  
IMPROVEMENT LIMIT  
STA. 27+11
- LOCATION 1  
IMPROVEMENT LIMIT  
STA. 100+22
- LOCATION 1  
IMPROVEMENT ENDS  
STA. 103+47



MAP SCALE  
NO SCALE

LOCATION 2  
IMPROVEMENT BEGINS  
STA. 200+00

LOCATION 2  
IMPROVEMENT ENDS  
STA. 212+06

PROJECT ENGINEER: J. ALAIN MIDY (847) 221-3056  
PROJECT MANAGER: ISSAM RAYYAN (847) 705-4178

CONTRACT NO. 62A57

GROSS LENGTH OF IMPROVEMENT (LOCATIONS 1 AND 2) = 2,871 LIN. FT. = 0.54 MILE  
NET LENGTH OF IMPROVEMENT (LOCATIONS 1 AND 2) = 2,607 LIN. FT. = 0.49 MILE

STATE OF ILLINOIS  
DEPARTMENT OF TRANSPORTATION  
DIVISION OF HIGHWAYS

SUBMITTED *March 31 2015*

*John F. ...*  
DEPUTY DIRECTOR OF HIGHWAYS, REGION ENGINEER

*May 8 2015*  
*John D. Baranzoni PE, LE*  
ENGINEER OF DESIGN AND ENVIRONMENT

*May 8 2015*  
*Omer Osman PE, LE*  
DIRECTOR OF HIGHWAYS, CHIEF ENGINEER

PRINTED BY THE AUTHORITY  
OF THE STATE OF ILLINOIS

**INDEX OF SHEETS**

- 1. COVER SHEET
- 2. INDEX OF SHEETS, STATE STANDARDS AND GENERAL NOTES
- 3-4. SUMMARY OF QUANTITIES
- 5. EXISTING AND PROPOSED TYPICAL SECTIONS
- 6-7. ROADWAY AND PAVEMENT MARKING PLAN
- 8. DETAILS FOR FRAMES AND LIDS ADJUSTMENT WITH MILLING (BD-8)
- 9. CITY OF CHICAGO DETAILS FOR P.C. CONCRETE DRIVEWAY, ALLEY RETURN AND SIDEWALK (BD-17)
- 10. PAVEMENT PATCHING FOR HMA SURFACED PAVEMENT (BD-22)
- 11. CURB OR CURB AND GUTTER REMOVAL AND REPLACEMENT (BD-24)
- 12. BUTT JOINT AND HMA TAPER DETAILS (BD-32)
- 13. TRAFFIC CONTROL AND PROTECTION FOR SIDE ROADS, INTERSECTIONS, AND DRIVEWAYS (TC-10)
- 14. TRAFFIC CONTROL AND PROTECTION AT TURN BAYS (TO REMAIN OPEN TO TRAFFIC) (TC-14)
- 15. PAVEMENT MARKING LETTERS AND SYMBOLS FOR TRAFFIC STAGING (TC-16)
- 16. ARTERIAL ROAD INFORMATION (TC-22)
- 17-19. CITY OF CHICAGO TYPICAL PAVEMENT MARKING (TC-24)

**STATE STANDARDS**

| STANDARD NO. | DESCRIPTION  |
|--------------|--|
| 000001-06    | STANDARD SYMBOLS, ABBREVIATIONS AND PATTERNS                   |
| 424001-08    | PERPENDICULAR CURB RAMPS FOR SIDEWALKS                         |
| 424006-02    | DIAGONAL CURB RAMPS FOR SIDEWALKS                              |
| 424011-02    | CORNER PARALLEL CURB RAMPS FOR SIDEWALKS                       |
| 424016-02    | MID-BLOCK CURB RAMPS FOR SIDEWALKS                             |
| 424021-03    | DEPRESSED CORNER FOR SIDEWALKS                                 |
| 442201-03    | CLASS C AND D PATCHES  |
| 604001-04    | FRAME AND LIDS, TYPE 1   |
| 606001-06    | COMBINATION CONCRETE CURB AND GUTTER                           |
| 701301-04    | LANE CLOSURE, 2L, 2W, SHORT TIME OPERATIONS                    |
| 701311-03    | LANE CLOSURE, 2L, 2W, MOVING OPERATIONS - DAY ONLY             |
| 701501-06    | URBAN LANE CLOSURE, MULTILANE, 2L, 2W, UNDIVIDED               |
| 701701-09    | URBAN LANE CLOSURE, MULTILANE INTERSECTION                     |
| 701801-05    | LANE CLOSURE MULTILANE, 1W OR 2W CROSSWALK OR SIDEWALK CLOSURE |
| 701901-04    | TRAFFIC CONTROL DEVICES  |

**CHICAGO NOTES**

BEFORE STARTING ANY EXCAVATION, THE CONTRACTOR SHALL CALL "C.U.A.N." (CHICAGO UTILITY ALERT NETWORK) AT 312-744-7000 FOR FIELD LOCATIONS OF BURIED ELECTRIC, TELEPHONE AND GAS FACILITIES. (48 HOUR NOTIFICATION IS REQUIRED).

THE CONTRACTOR SHALL COORDINATE CONSTRUCTION ACTIVITIES WITH UTILITY COMPANIES AND THE CITY OF CHICAGO.

PERMITS FROM THE DEPARTMENT OF SEWERS ARE REQUIRED FOR ALL UNDERGROUND STORM, SANITARY OR COMBINED SEWER SYSTEM CONSTRUCTION, THE DEPARTMENT OF SEWERS, PERMIT MUST BE OBTAINED BY A LICENSED SEWER DRAIN LAYER PRIOR TO START OF CONSTRUCTION.

PERFORATED LIDS SHALL BE PLACED ON ALL MANHOLES AND CATCH BASINS.

OPEN LID DRAINAGE STRUCTURES SHALL NOT BE CLOSED, COVERED OR OTHERWISE OBSTRUCTED DURING CONSTRUCTION OF THIS ROADWAY WITHOUT THE WRITTEN PERMISSION FROM THE CITY OF CHICAGO.

CITY OF CHICAGO CASTINGS ARE THE PROPERTY OF THE CITY OF CHICAGO AND THE CONTRACTOR SHALL NOTIFY THE CITY FOR REMOVAL AND DISPOSITION OF THE CASTINGS.

**GENERAL NOTES**

THE CONTRACTOR WILL NOT BE ABLE TO SET UP A YARD OR FIELD OFFICE ON STATE PROPERTY WITHOUT THE WRITTEN PERMISSION OF THE DEPARTMENT.

ALL DAMAGE TO EXISTING PAVEMENT MARKINGS OR RAISED REFLECTIVE PAVEMENT MARKERS OUTSIDE THE REMOVAL LINE SHOWN ON THE PLANS SHALL BE REPLACED AT THE CONTRACTOR'S EXPENSE.

BEFORE BEGINNING ANY WORK, THE CONTRACTOR SHALL RETAIN AND RECORD FOR FUTURE REFERENCE, ALL EXISTING PAVEMENT MARKING LINES (AND RAISED REFLECTIVE PAVEMENT MARKERS) IN ORDER THAT THESE LOCATIONS CAN BE RE-ESTABLISHED FOR STRIPING. EXACT LOCATIONS OF ALL PAVEMENT MARKINGS SHALL BE AS DIRECTED BY THE ENGINEER.

IT SHALL BE THE CONTRACTOR'S RESPONSIBILITY TO VERIFY ALL DIMENSIONS AND CONDITIONS EXISTING IN THE FIELD PRIOR TO CONSTRUCTION AND ORDERING OF MATERIALS.

FRAMES AND GRATES ADJUSTMENT OF PRIVATE UTILITIES WITHIN THE LIMITS OF THE IMPROVEMENTS SHALL BE DONE BY THEIR RESPECTIVE OWNERS AND ARE NOT PART OF THIS CONTRACT.

THE CONTRACTOR SHALL CONTACT THE IDOT ARTERIAL DISTRICT ONE TRAFFIC CONTROL SUPERVISOR AT (847) 705-4470 A MINIMUM OF 72 HOURS IN ADVANCE OF BEGINNING WORK.

THE RESIDENT ENGINEER SHALL CONTACT JOE ECKERT, TRAFFIC FIELD ENGINEER, AT (224) 217-8632 A MINIMUM OF TWO (2) WEEKS PRIOR TO THE PLACEMENT OF PERMANENT PAVEMENT MARKINGS.

DO NOT SCALE PLANS FOR CONSTRUCTION DIMENSIONS.

WHEN THE MILLED PAVEMENT IS OPEN TO TRAFFIC THE MAXIMUM GRADE DIFFERENTIAL BETWEEN PASSES OF THE MILLING MACHINE SHALL NOT EXCEED 1/2 INCHES WHERE THE SPEED LIMIT IS 40 MPH OR LESS AND 1 INCH WHERE THE SPEED LIMIT IS GREATER THAN 40 MPH. WITH WRITTEN APPROVAL OF THE ENGINEER, A MAXIMUM GRADE DIFFERENTIAL OF 3 INCHES MAY BE ALLOWED IF THE EDGE OF THE MILLING IS SLOPED A MINIMUM 1:3 (V:H) OR A NOTCHED LONGITUDINAL WEDGE IS USED.

ALL PAVEMENT PATCHING LOCATIONS WILL DETERMINED IN THE FIELD BY THE ENGINEER.

BUTT JOINTS WILL BE INSTALLED AT THE ENDS OF ALL RESURFACING (WHERE RESURFACING MEETS EXISTING PAVEMENT) ACCORDING TO THE "BUTT JOINT AND HOT-MIX ASPHALT TAPER DETAILS" SHEET INCLUDED IN THE PLANS, UNLESS OTHERWISE SPECIFIED.

OVERNIGHT LANE CLOSURES SHALL NOT BE ALLOWED FOR REHABILITATION PROJECTS INVOLVING DAYTIME MILLING AND RESURFACING OPERATIONS AND CLASS D PATCHING UNLESS OTHER CONDITIONS WARRANT EXTENDED LANE CLOSURES AS DETERMINED AND APPROVED IN WRITING BY THE ENGINEER OR AS PROVIDED FOR IN THE CONTRACT SPECIFICATIONS.

THE CONTRACTOR SHALL BE REQUIRED TO PROVIDE ACCESS TO ABUTTING PROPERTY AT ALL TIMES DURING THE CONSTRUCTION OF THIS PROJECT.

EXISTING BROKEN FRAMES AND LIDS SHALL BE REMOVED AND DISPOSED OF BY THE CONTRACTOR AND SHALL BE REPLACED AS DIRECTED BY THE ENGINEER. REPLACEMENT FRAMES AND LIDS WILL BE PAID FOR ACCORDING TO ARTICLE 109.04 OF THE STANDARD SPECIFICATIONS UNLESS A SEPARATE PAY ITEM HAS BEEN PROVIDED.

PAVEMENT MARKING TAPE, TYPE III SHALL BE USED FOR SHORT TERM PAVEMENT MARKINGS ON ALL FINAL SURFACES. THE COST OF THE PAVEMENT TAPE, TYPE III AND ITS REMOVAL SHALL BE INCLUDED IN THE COST OF SHORT TERM PAVEMENT MARKING.

ALL PAVEMENT MARKINGS SHALL BE PLACED THROUGHOUT THE IMPROVEMENT ACCORDING TO CITY OF CHICAGO TYPICAL PAVEMENT MARKING.

SIDEWALK RAMPS MODIFICATIONS WITHIN THE LIMITS OF THE PROJECT SHALL CONFORM TO THE APPLICABLE HIGHWAY STANDARDS INCLUDED IN THE PLANS.

THE COST OF SURFACE REMOVAL IN THE GUTTER FLAG SHALL BE INCLUDED IN THE COST OF "HOT-MIX ASPHALT SURFACE REMOVAL 2 1/4" PAY ITEM.

ALL COMBINATION CONCRETE CURB AND GUTTER REMOVAL AND REPLACEMENT LOCATIONS WILL BE DETERMINED IN THE FIELD BY THE ENGINEER.

|                                      |                             |            |           |   |   |       |    |        |            |          |                    |              |           |
|--------------------------------------|-----------------------------|------------|-----------|---|---|-------|----|--------|------------|----------|--------------------|--------------|-----------|
| FILE NAME :                          | USER NAME : guillaumefp     | DESIGNED - | REVISED - | <b>STATE OF ILLINOIS<br/>DEPARTMENT OF TRANSPORTATION</b> | <b>GENERAL NOTES</b>                              |       |    |        | D.P. RITE. | SECTION  | COUNTY             | TOTAL SHEETS | SHEET NO. |
| er:\pwork\p\idot\guillaumefp\d040003 | 125015-1112RS-2             | DRAWN -    | REVISED - |   | <b>ERIE STREET (OGDEN AVENUE TO NOBLE STREET)</b> |       |    |        | 22         | 1112RS-2 | COOK               | 19           | 2         |
| Default                              | PLOT SCALE = 100.0000 / 100 | CHECKED -  | REVISED - |   | SCALE: NONE                                       | SHEET | OF | SHEETS | STA.       | TO STA.  | CONTRACT NO. 62A57 |              |           |
|                                      | PLOT DATE = 4/2/2015        | DATE -     | REVISED - |   | ILLINOIS FED. AID PROJECT                         |       |    |        |            |          |                    |              |           |

| SUMMARY OF QUANTITIES |  |       | URBAN<br>100%<br>STATE<br>CONSTRUCTION TYPE CODE |              |  |  |
|-----------------------|--|-------|--|--------------|--|--|
| CODE NO               | ITEM   | UNIT  | TOTAL QUANTITIES                                 | ROADWAY 0005 |  |  |
| 21101615              | TOPSOIL FURNISH AND PLACE, 4"                              | SQ YD | 6  | 6            |  |  |
| 25200110              | SODDING, SALT TOLERANT                                     | SQ YD | 6  | 6            |  |  |
| 40600275              | BITUMINOUS MATERIALS (PRIME COAT)                          | POUND | 1170   | 1170         |  |  |
| 40600400              | MIXTURE FOR CRACKS, JOINTS, AND FLANGEWAYS                 | TON   | 24   | 24           |  |  |
| 40600827              | POLYMERIZED LEVELING BINDER (MACHINE METHOD), IL-4.75, N50 | TON   | 645  | 645          |  |  |
| 40600982              | HOT-MIX ASPHALT SURFACE REMOVAL - BUTT JOINT               | SQ YD | 330  | 330          |  |  |
| 40603340              | HOT-MIX ASPHALT SURFACE COURSE, MIX "D", N70               | TON   | 1310   | 1310         |  |  |
| 42001300              | PROTECTIVE COAT  | SQ YD | 430  | 430          |  |  |
| 42400200              | PORTLAND CEMENT CONCRETE SIDEWALK 5 INCH                   | SQ FT | 2250   | 2250         |  |  |
| 42400800              | DETECTABLE WARNINGS  | SQ FT | 108  | 108          |  |  |
| 44000158              | HOT-MIX ASPHALT SURFACE REMOVAL, 2 1/4"                    | SQ YD | 15580  | 15580        |  |  |
| 44000600              | SIDEWALK REMOVAL   | SQ FT | 2250   | 2250         |  |  |

| SUMMARY OF QUANTITIES |   |        | URBAN<br>100%<br>STATE<br>CONSTRUCTION TYPE CODE |              |  |  |
|-----------------------|---|--------|--|--------------|--|--|
| CODE NO               | ITEM  | UNIT   | TOTAL QUANTITIES                                 | ROADWAY 0005 |  |  |
| 44201803              | CLASS D PATCHES, TYPE II, 13 INCH               | SQ YD  | 750  | 750          |  |  |
| 44201807              | CLASS D PATCHES, TYPE III, 13 INCH              | SQ YD  | 250  | 250          |  |  |
| 44201809              | CLASS D PATCHES, TYPE IV, 13 INCH               | SQ YD  | 250  | 250          |  |  |
| 60300105              | FRAMES AND GRATES TO BE ADJUSTED                | EACH   | 2  | 2            |  |  |
| 60406520              | FRAMES AND LIDS, OPEN LID (CITY OF CHICAGO)     | EACH   | 3  | 3            |  |  |
| 60406530              | FRAMES AND LIDS, CLOSED LID (CITY OF CHICAGO)   | EACH   | 2  | 2            |  |  |
| *60900200             | NON-SPECIAL WASTE DISPOSAL                      | CU YDS | 10   | 10           |  |  |
| 67000400              | ENGINEER'S FIELD OFFICE, TYPE A                 | CAL MQ | 3  | 3            |  |  |
| *60900450             | SPECIAL WASTE PLANS                             | L SUM  | 1  | 1            |  |  |
| 67100100              | MOBILIZATION                                    | L SUM  | 1  | 1            |  |  |
| *60900530             | SOIL DISPOSAL ANALYSIS                          | EACH   | 1  | 1            |  |  |
| 70102620              | TRAFFIC CONTROL AND PROTECTION, STANDARD 701501 | L SUM  | 1  | 1            |  |  |
| 70102635              | TRAFFIC CONTROL AND PROTECTION, STANDARD 701701 | L SUM  | 1  | 1            |  |  |
| 70102640              | TRAFFIC CONTROL AND PROTECTION, STANDARD 701801 | L SUM  | 1  | 1            |  |  |
| 70300100              | SHORT TERM PAVEMENT MARKING                     | FOOT   | 500  | 500          |  |  |
| 70300210              | TEMPORARY PAVEMENT MARKING LETTERS AND SYMBOLS  | SQ FT  | 23   | 23           |  |  |

\* Specialty Items

13

Rev.

|   |                        |            |           |
|---|------------------------|------------|-----------|
| FILE NAME :<br>c:\p\work\1112RS\1112RS-2\1112RS-2.dwg | USER NAME :<br>gullamr | DESIGNED - | REVISED - |
|   |                        | DRAWN -    | REVISED - |
|   |                        | CHECKED -  | REVISED - |
|   |                        | DATE -     | REVISED - |

STATE OF ILLINOIS  
DEPARTMENT OF TRANSPORTATION

SUMMARY OF QUANTITIES  
ERIE STREET (NOBLE STREET TO UNION AVE.)

|   |          |        |                     |              |
|---|----------|--------|---------------------|--------------|
| D.R. RTE.                                       | SECTION  | COUNTY | TOTAL SHEETS        | SHEET NO.    |
| 22  | 1112RS-2 | COOK   | 19                  | 3            |
| SCALE: NONE                                     |          |        | SHEET NO. OF SHEETS | STA. TO STA. |
| FED. ROAD DIST. NO. 1 ILLINOIS FED. AID PROJECT |          |        |                     |              |

CONTRACT NO. 62A57

| SUMMARY OF QUANTITIES |   |       | URBAN<br>100%<br>STATE<br>CONSTRUCTION TYPE CODE |              |  |  |  |  |  |
|-----------------------|---|-------|--|--------------|--|--|--|--|--|
| CODE NO               | ITEM  | UNIT  | TOTAL QUANTITIES                                 | ROADWAY 0005 |  |  |  |  |  |
| 70300220              | TEMPORARY PAVEMENT MARKING - LINE 4"                    | FOOT  | 2100   | 2100         |  |  |  |  |  |
| 70300240              | TEMPORARY PAVEMENT MARKING - LINE 6"                    | FOOT  | 300  | 300          |  |  |  |  |  |
| 70300260              | TEMPORARY PAVEMENT MARKING - LINE 12"                   | FOOT  | 60   | 60           |  |  |  |  |  |
| 70300280              | TEMPORARY PAVEMENT MARKING - LINE 24"                   | FOOT  | 900  | 900          |  |  |  |  |  |
| 70301000              | WORK ZONE PAVEMENT MARKING REMOVAL                      | SO FT | 180  | 180          |  |  |  |  |  |
| * 78000100            | THERMOPLASTIC PAVEMENT MARKING -<br>LETTERS AND SYMBOLS | SO FT | 23   | 23           |  |  |  |  |  |
| * 78000200            | THERMOPLASTIC PAVEMENT MARKING - LINE 4"                | FOOT  | 2100   | 2100         |  |  |  |  |  |
| * 78000400            | THERMOPLASTIC PAVEMENT MARKING - LINE 6"                | FOOT  | 300  | 300          |  |  |  |  |  |
| * 78000600            | THERMOPLASTIC PAVEMENT MARKING - LINE 12"               | FOOT  | 60   | 60           |  |  |  |  |  |
| * 78000650            | THERMOPLASTIC PAVEMENT MARKING - LINE 24"               | FOOT  | 900  | 900          |  |  |  |  |  |
| X5537800              | STORM SEWERS TO BE CLEANED 12"                          | FOOT  | 100  | 100          |  |  |  |  |  |
| X6030310              | FRAMES AND LIDS TO BE ADJUSTED (SPECIAL)                | EACH  | 18   | 18           |  |  |  |  |  |

| SUMMARY OF QUANTITIES |   |       | URBAN<br>100%<br>STATE<br>CONSTRUCTION TYPE CODE |              |  |  |  |  |  |
|-----------------------|---|-------|--|--------------|--|--|--|--|--|
| CODE NO               | ITEM  | UNIT  | TOTAL QUANTITIES                                 | ROADWAY 0005 |  |  |  |  |  |
| Z0004562              | COMBINATION CONCRETE CURB AND GUTTER<br>REMOVAL AND REPLACEMENT | FOOT  | 800  | 800          |  |  |  |  |  |
| Z0018500              | DRAINAGE STRUCTURES TO BE CLEANED                               | EACH  | 10   | 10           |  |  |  |  |  |
| Z0030850              | TEMPORARY INFORMATION SIGNING                                   | SO FT | 102.8  | 102.8        |  |  |  |  |  |

|   |                      |            |           |
|---|----------------------|------------|-----------|
| FILE NAME :                                     | USER NAME : gilliamf | DESIGNED - | REVISED - |
| C:\p\work\100\gilliamf\1004300130125015-111.dgn |                      | DRAWN -    | REVISED - |
|   |                      | CHECKED -  | REVISED - |
|   |                      | DATE -     | REVISED - |

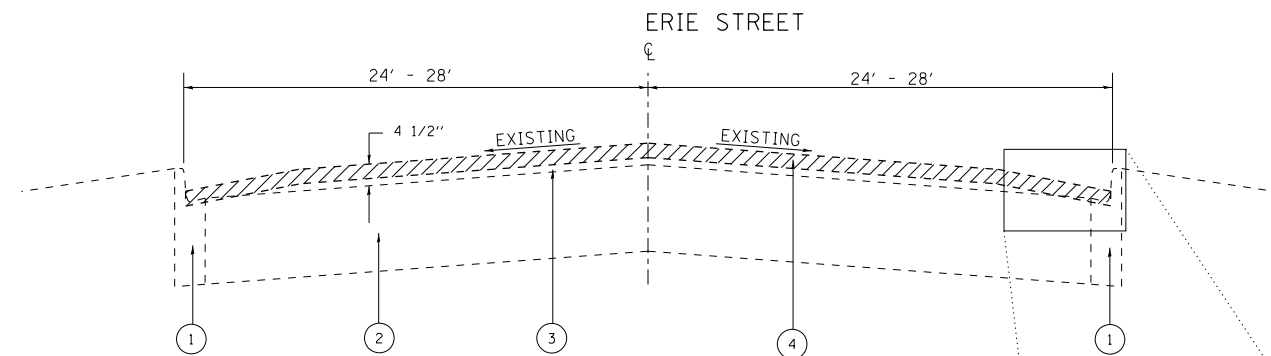
**STATE OF ILLINOIS  
DEPARTMENT OF TRANSPORTATION**

|  |           |           |              |
|--|-----------|-----------|--------------|
| SUMMARY OF QUANTITIES                    |           |           |              |
| ERIE STREET (NOBLE STREET TO UNION AVE.) |           |           |              |
| SCALE: NONE                              | SHEET NO. | OF SHEETS | STA. TO STA. |

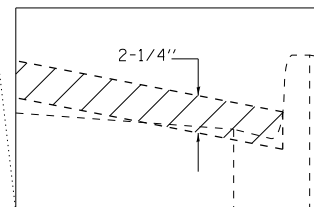
|   |          |        |              |           |
|---|----------|--------|--------------|-----------|
| D.R. RTE.                                       | SECTION  | COUNTY | TOTAL SHEETS | SHEET NO. |
| 22  | 1112R5-2 | COOK   | 19           | 4         |
| CONTRACT NO. 62A57                              |          |        |              |           |
| FED. ROAD DIST. NO. 1 ILLINOIS FED. AID PROJECT |          |        |              |           |

12

\*Specialty Items



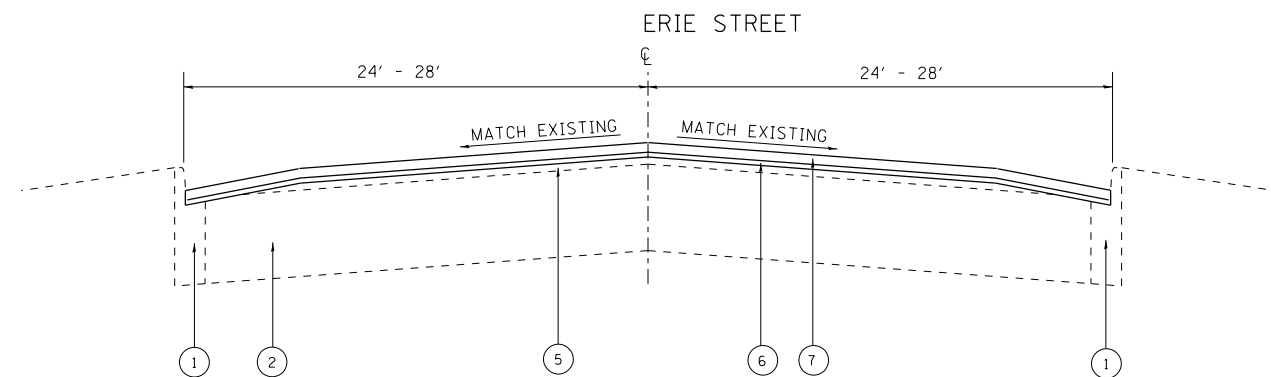
**EXISTING TYPICAL CROSS SECTION**  
 LOCATION 1 STA. 13+71 TO STA. 27+11  
 STA. 100+22 TO 103+47  
 LOCATION 2 STA. 200+00 TO STA. 212+06



NOTE: MILLING OF ANY CONCRETE BASE COURSE OR CONCRETE GUTTER FLAG IS INCIDENTAL TO HMA SURFACE REMOVAL 2-1/4"

**LEGEND**

- ① EXISTING COMBINATION CURB AND GUTTER
- ② EXISTING PORTLAND CEMENT CONCRETE PAVEMENT (10-3/4" AND VARIES)
- ③ EXISTING HMA PAVEMENT (4-1/2" AND VARIES)
- ④ PROPOSED HMA SURFACE REMOVAL (2-1/4")
- ⑤ HMA OVERLAY AFTER MILLING ± 2 1/4"
- ⑥ PROPOSED POLYMERIZED LEVELING BINDER (MACHINE METHOD), IL-4.75, N50 (3/4")
- ⑦ PROPOSED HMA SURFACE COURSE, MIX "D", N70 (1-1/2")

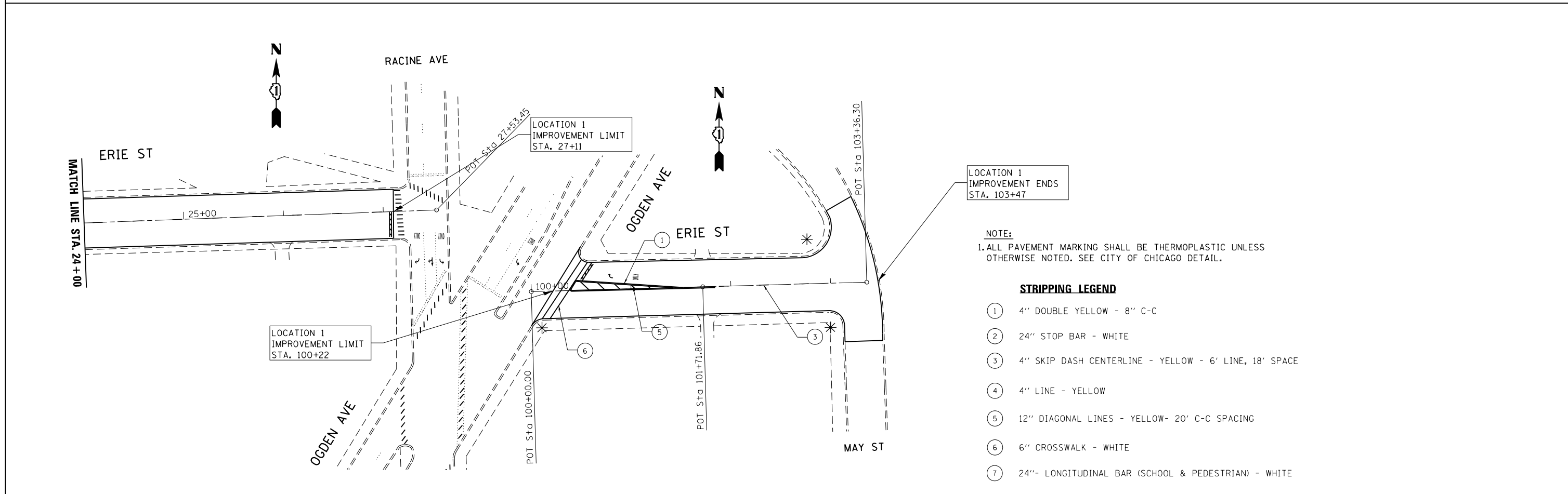
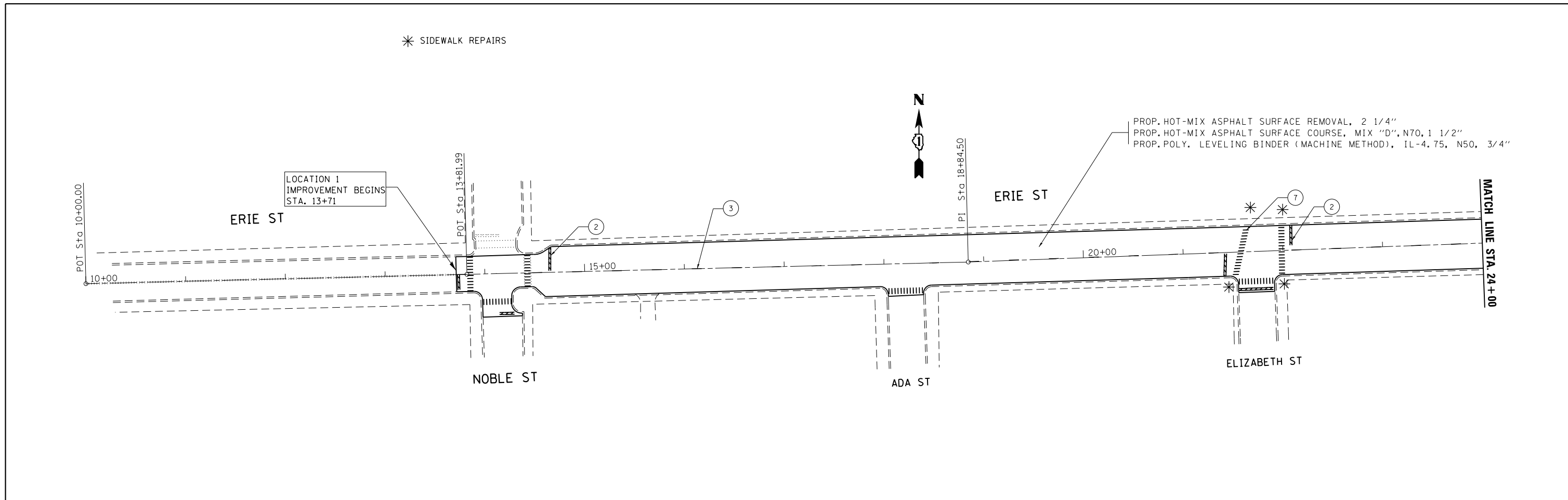


**PROPOSED TYPICAL CROSS SECTION**  
 LOCATION 1 STA. 13+71 TO STA. 27+11  
 STA. 100+22 TO 103+47  
 LOCATION 2 STA. 200+00 TO STA. 212+06

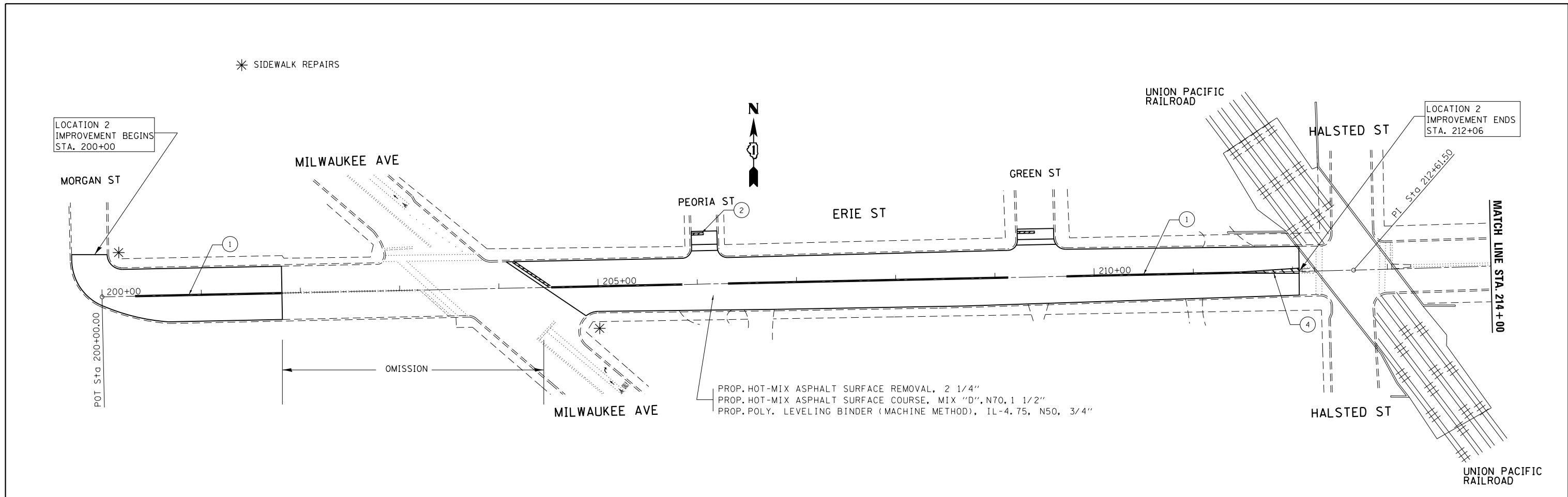
| MIXTURE REQUIREMENTS  |                 | QUALITY MANAGEMENT PROGRAM (QMP) |
|---|-----------------|----------------------------------|
| MIXTURE USES  | VOIDS<br>© Ndes |                                  |
| <b>PAVEMENT RESURFACING</b>   |                 |                                  |
| HOT-MIX ASPHALT SURFACE COURSE, MIX "D", N70 (IL 9.5 mm)  | 4% AT 70 GYR.   | <b>QCP</b>                       |
| POLYMERIZED LEVELING BINDER (MACHINE METHOD), IL-4.75, N50  | 3.5% AT 50 GYR. | <b>QC/QA</b>                     |
| <b>PATCHING</b>   |                 |                                  |
| CLASS D PATCHES (HMA BINDER, IL-19.0 mm)  | 4% AT 70 GYR.   | <b>QC/QA</b>                     |
| QMP Designation: Quality Control/Quality Assurance (QC/QA); Quality Control for Performance (QCP) |                 |                                  |

NOTE 1: THE UNIT WEIGHT USED TO CALCULATE ALL HMA SURFACE MIXTURE QUANTITIES IS 112 LBS/SQYD/IN  
 NOTE 2: THE "AC TYPE" FOR POLYMERIZED HMA MIXES SHALL BE "SBS/SBR PG 76-22" AND FOR NON-POLYMERIZED HMA THE "AC TYPE" SHALL BE "PG 64-22" UNLESS MODIFIED BY DISTRICT ONE SPECIAL PROVISIONS.  
 FOR USE OF RECYCLED MATERIALS SEE SPECIAL PROVISIONS.  
 QUALITY MANAGEMENT PROGRAM (QMP) IDENTIFIES THE PARTICULAR QUALITY CONTROL SPECIFICATION THAT APPLIES TO THE HMA MIXTURE

THE CONTRACTOR SHALL MILL BEFORE PATCHING



|             |                              |            |           |   |  |                           |          |        |              |           |  |
|-------------|------------------------------|------------|-----------|---|--|---------------------------|----------|--------|--------------|-----------|--|
| FILE NAME = | USER NAME = guillaumejp      | DESIGNED - | REVISED - | <b>STATE OF ILLINOIS<br/>DEPARTMENT OF TRANSPORTATION</b> | <b>EXISTING AND PROPOSED ROADWAY PLAN<br/>ERIE STREET (OGDEN AVENUE TO NOBLE STREET)</b> | O.R. RTE.                 | SECTION  | COUNTY | TOTAL SHEETS | SHEET NO. |  |
| Default     | 25015-shr-pln.dgn            | DRAWN -    | REVISED - |   |  | 22                        | 1112RS-2 | COOK   | 19           | 6         |  |
|             | PLOT SCALE = 100.0000' / in. | CHECKED -  | REVISED - |   |  | CONTRACT NO. 62A57        |          |        |              |           |  |
|             | PLOT DATE = 4/2/2015         | DATE -     | REVISED - |   |  | ILLINOIS FED. AID PROJECT |          |        |              |           |  |



**NOTE:**  
 1. ALL PAVEMENT MARKING SHALL BE THERMOPLASTIC UNLESS OTHERWISE NOTED. SEE CITY OF CHICAGO DETAIL.

**STRIPPING LEGEND**

- ① 4" DOUBLE YELLOW - 8" C-C
- ② 24" STOP BAR - WHITE
- ③ 4" SKIP DASH CENTERLINE - YELLOW - 6' LINE, 18' SPACE
- ④ 4" LINE - YELLOW
- ⑤ 12" DIAGONAL LINES - YELLOW- 20' C-C SPACING
- ⑥ 6" CROSSWALK - WHITE
- ⑦ 24"- LONGITUDINAL BAR (SCHOOL & PEDESTRIAN) - WHITE

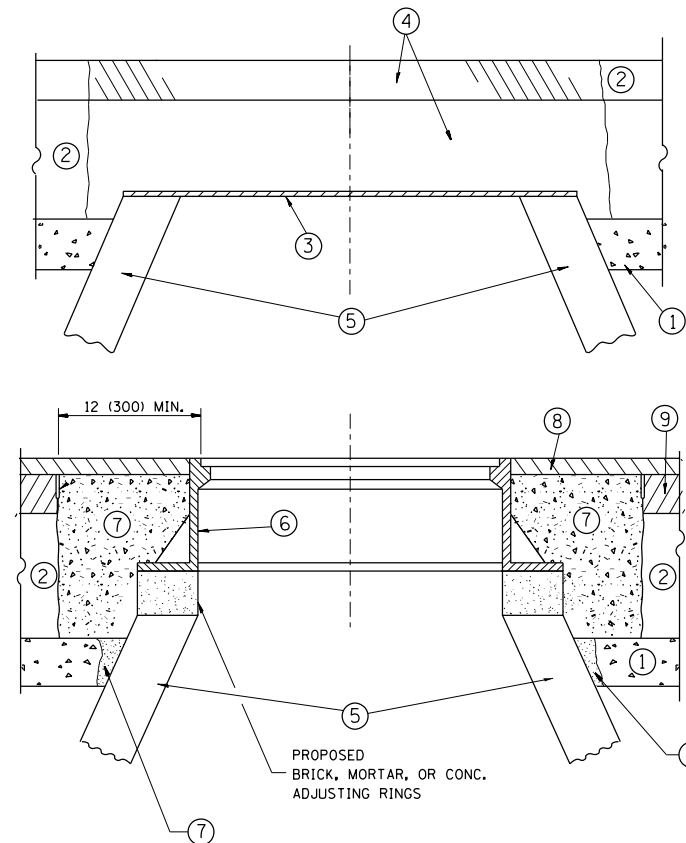
|   |                              |            |           |
|---|------------------------------|------------|-----------|
| FILE NAME =   | USER NAME = guillaumejp      | DESIGNED - | REVISED - |
| et:\pw\work\p\idot\guillaumejp\d0430033\025015-shr-plot.dgn |                              | DRAWN -    | REVISED - |
|   | PLOT SCALE = 100.0000' / in. | CHECKED -  | REVISED - |
| Default   | PLOT DATE = 4/2/2015         | DATE -     | REVISED - |

**STATE OF ILLINOIS  
 DEPARTMENT OF TRANSPORTATION**

**EXISTING AND PROPOSED ROADWAY PLAN  
 ERIE STREET (OGDEN AVENUE TO NOBLE STREET)**

SCALE: 1" = 50'      SHEET      OF      SHEETS      STA.      TO      STA.

| O.R. RTE.                 | SECTION  | COUNTY | TOTAL SHEETS | SHEET NO. |
|---------------------------|----------|--------|--------------|-----------|
| 22                        | 1112RS-2 | COOK   | 19           | 7         |
| CONTRACT NO. 62A57        |          |        |              |           |
| ILLINOIS FED. AID PROJECT |          |        |              |           |



**CONSTRUCTION PROCEDURES**

**STAGE 1 (BEFORE PAVEMENT MILLING)**

- A) REMOVE A MINIMUM OF 12 (300) OF THE PAVEMENT FROM AROUND THE STRUCTURE.
- B) REMOVE THE EXISTING FRAME AND LID FROM THE STRUCTURE.
- C) COVER THE STRUCTURE OPENING WITH A 36 (900) DIAMETER METAL PLATE.
- D) BACKFILL WITH CRUSHED STONE AND A MINIMUM 1/2 (40) THICK HMA SURFACE MIX APPROVED BY THE ENGINEER.

**STAGE 2 (AFTER PAVEMENT MILLING)**

- A) REMOVE THE HMA SURFACE MIX AND CRUSHED STONE.
- B) INSTALL THE FRAME AND LID; ADJUST THE FRAME TO ITS FINAL SURFACE ELEVATION.
- C) THE SURROUNDING SPACE SHALL BE FILLED WITH CLASS PP-1\* CONCRETE TO THE ELEVATION OF THE SURFACE OF THE EXISTING BASE COURSE OR THE BINDER COURSE.

\* UNLESS OTHERWISE SPECIFIED IN THE PLANS.

THE PROCEDURE EXPLAINED ABOVE SHALL CONFORM TO THE APPLICABLE PORTIONS OF SECTIONS 353, 406, 602, AND 603 OF THE STANDARD SPECIFICATIONS EXCEPT THAT "THE CONTRACTOR SHALL ADJUST THE STRUCTURES TO THE FINISHED PAVEMENT ELEVATION NO MORE THAN 5 CALENDAR DAYS PRIOR TO PLACEMENT OF THE FINAL LIFT OF SURFACE UNLESS APPROVED BY THE ENGINEER."

**LEGEND**

- ① SUB-BASE GRANULAR MATERIAL
- ⑥ FRAME AND LID (SEE NOTES)
- ② EXISTING PAVEMENT
- ⑦ CLASS PP-1\* CONCRETE
- ③ 36 (900) DIAMETER METAL PLATE
- ⑧ PROPOSED HMA SURFACE COURSE
- ④ PROPOSED CRUSHED STONE AND HMA SURFACE MIX
- ⑨ PROPOSED HMA BINDER COURSE
- ⑤ EXISTING STRUCTURE

**LOCATION OF STRUCTURES:**

THE CONTRACTOR WILL BE REQUIRED TO KEEP A RECORD OF THE LOCATIONS OF THE BURIED STRUCTURES ACCORDING TO THE STATION AND DISTANCE LEFT OR RIGHT OF THE CENTERLINE OF PAVEMENT. UPON COMPLETION OF THE WORK, THE CONTRACTOR WILL DELIVER THE RECORD TO THE ENGINEER.

**BASIS OF PAYMENT:**

REMOVING FRAMES AND LIDS ON DRAINAGE AND UTILITY STRUCTURES IN THE PAVEMENT PRIOR TO MILLING, AND ADJUSTING TO FINAL GRADE PRIOR TO PLACING THE SURFACE COURSE, WILL BE PAID FOR AT THE CONTRACT UNIT PRICE EACH FOR "FRAMES AND LIDS TO BE ADJUSTED (SPECIAL)."

THIS WORK WILL NOT BE PAID FOR WHEN DRAINAGE AND UTILITY STRUCTURES ARE SPECIFIED FOR PAYMENT AS STRUCTURE RECONSTRUCTION.

NEW FRAMES AND LIDS, WHEN SPECIFIED, WILL BE PAID FOR SEPARATELY.

**NOTES:**

EXISTING BROKEN FRAMES AND LIDS SHALL BE REMOVED AND DISPOSED OF BY THE CONTRACTOR AND SHALL BE REPLACED AS DIRECTED BY THE ENGINEER. REPLACEMENT FRAMES AND LIDS WILL BE PAID FOR IN ACCORDANCE WITH ARTICLE 109.04 OF THE STANDARD SPECIFICATIONS UNLESS A SEPARATE PAY ITEM HAS BEEN PROVIDED.

IF THE EXISTING LIDS ARE OPEN, THE FRAME WILL BE ADJUSTED TO THE ELEVATION OF THE MILLED PAVEMENT SURFACE PRIOR TO THE MILLING OPERATION. THE FRAME WILL NOT BE REMOVED AND COVERED BY THE METAL PLATE.

CITY OF CHICAGO CASTINGS ARE THE PROPERTY OF THE CITY AND THE CONTRACTOR SHALL NOTIFY THE CITY FOR REMOVAL AND DISPOSITION OF THE CASTINGS.

THE METAL PLATE USED TO COVER THE STRUCTURE SHALL REMAIN THE PROPERTY OF THE CONTRACTOR.

WHEN STRUCTURES ARE TO BE ADJUSTED OR RECONSTRUCTED, THE LOWERING AND RAISING OF THE FRAMES AND LIDS WILL NOT BE PAID FOR SEPARATELY BUT WILL BE INCLUDED IN THE COST OF THE CORRESPONDING PAY ITEM.

**DETAILS FOR FRAMES AND LIDS ADJUSTMENT WITH MILLING**

ALL DIMENSIONS ARE IN INCHES (MILLIMETERS) UNLESS OTHERWISE SHOWN

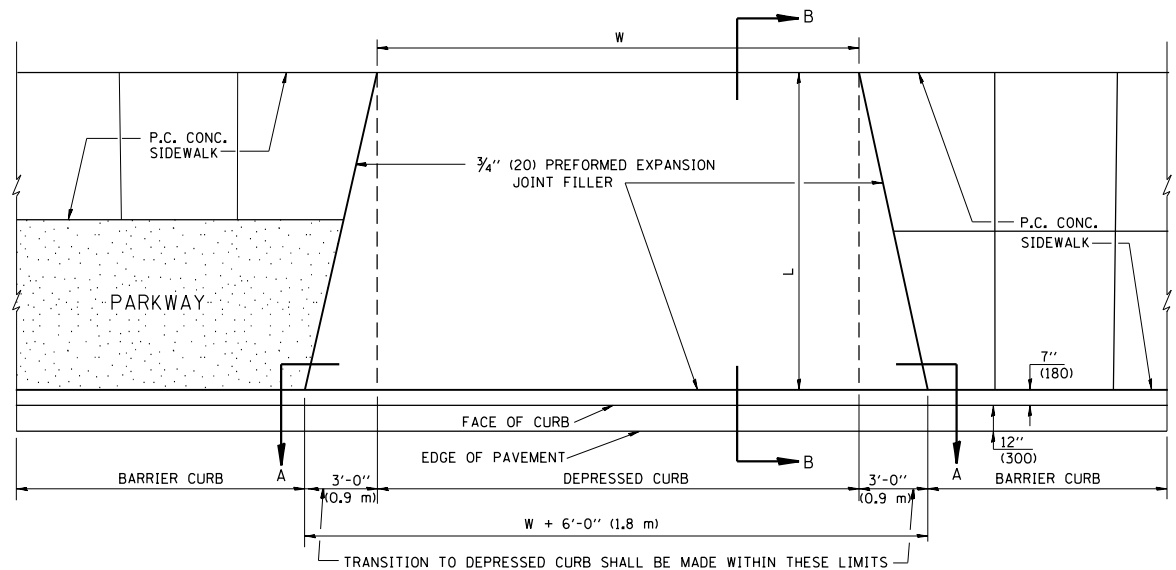
|  |                              |                    |                                |
|--|------------------------------|--------------------|--------------------------------|
| FILE NAME =                                    | USER NAME = guillaumefp      | DESIGNED - R. SHAH | REVISED - R. WIEDEMAN 05-14-04 |
| et:\pw\work\p\dot\guillaumefp\d0430033\Std.dgn |                              | DRAWN -            | REVISED - R. BORO 01-01-07     |
|  | PLOT SCALE = 100.0000' / in. | CHECKED -          | REVISED - R. BORO 03-09-11     |
|  | PLOT DATE = 3/31/2015        | DATE - 10-25-94    | REVISED - R. BORO 12-06-11     |

**STATE OF ILLINOIS  
DEPARTMENT OF TRANSPORTATION**

|  |                         |      |         |
|--|-------------------------|------|---------|
| <b>DETAILS FOR<br/>FRAMES AND LIDS ADJUSTMENT WITH MILLING</b> |                         |      |         |
| SCALE: NONE  | SHEET NO. 1 OF 1 SHEETS | STA. | TO STA. |

|  |          |                           |              |           |
|--|----------|---------------------------|--------------|-----------|
| F.A. RTE.  | SECTION  | COUNTY                    | TOTAL SHEETS | SHEET NO. |
| OR 22  | 1112RS-2 | COOK                      | 19           | 8         |
| <b>BD600-03 (BD-8)</b>   |          | <b>CONTRACT NO. 62A57</b> |              |           |
| <small>FED. ROAD DIST. NO. 1 ILLINOIS FED. AID PROJECT</small> |          |                           |              |           |

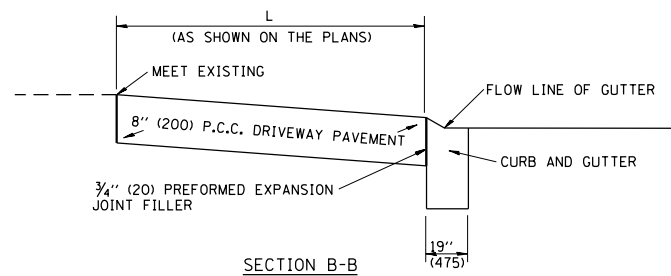




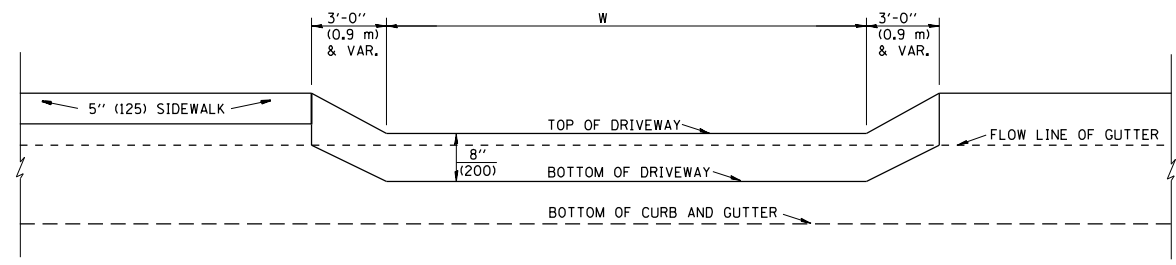
PLAN VIEW

NOTES:

1. EXPANSION JOINTS SHALL BE CONSTRUCTED AS SHOWN ON THE DETAILS FOR P.C.C. SIDEWALK.
2. THE CURB BETWEEN ADJACENT DRIVEWAYS SHALL BE FULL HEIGHT FOR A DISTANCE OF AT LEAST FOUR FEET (1.2 METERS)
3. P.C. CONCRETE DRIVEWAYS SHALL BE CONSTRUCTED AT LOCATIONS SHOWN ON THE PLANS OR AS DIRECTED BY THE ENGINEER.
4. 3/4" (20) PREFORMED EXPANSION JOINTS WILL NOT BE PAID FOR SEPARATELY BUT SHALL BE CONSIDERED INCIDENTAL TO P.C.C. DRIVEWAY PAVEMENT 8" (200).
5. COMBINATION CONC. CURB AND GUTTER SHALL BE MEASURED STRAIGHT ACROSS THE DRIVEWAY. NO ADDITIONAL COMPENSATION WILL BE ALLOWED FOR THE TRANSITION CURB AND GUTTER.

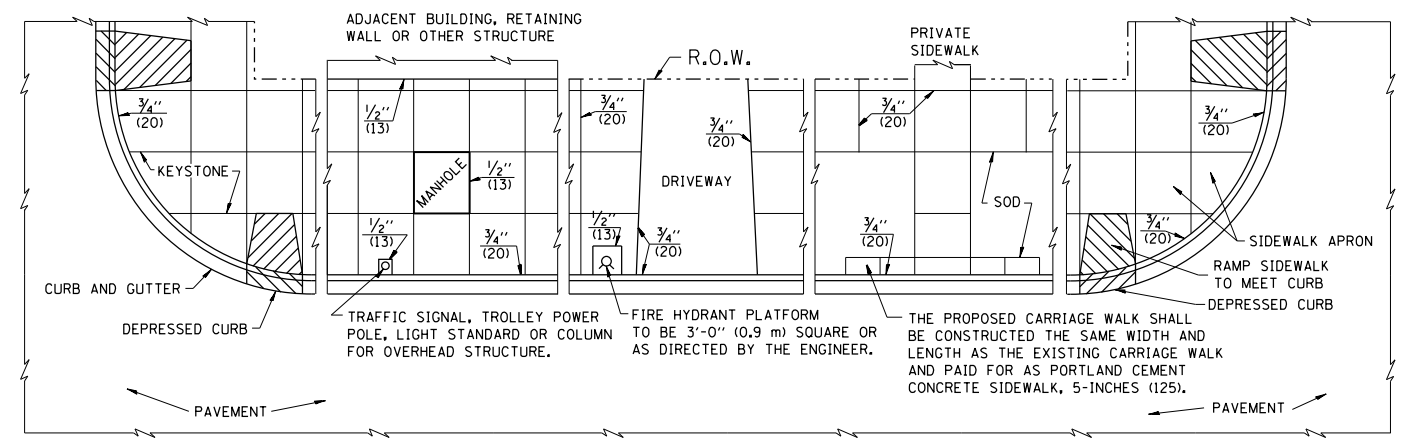


SECTION B-B



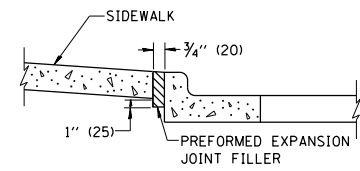
SECTION A-A

P.C.C. DRIVEWAY PAVEMENT DETAIL



NOTES:

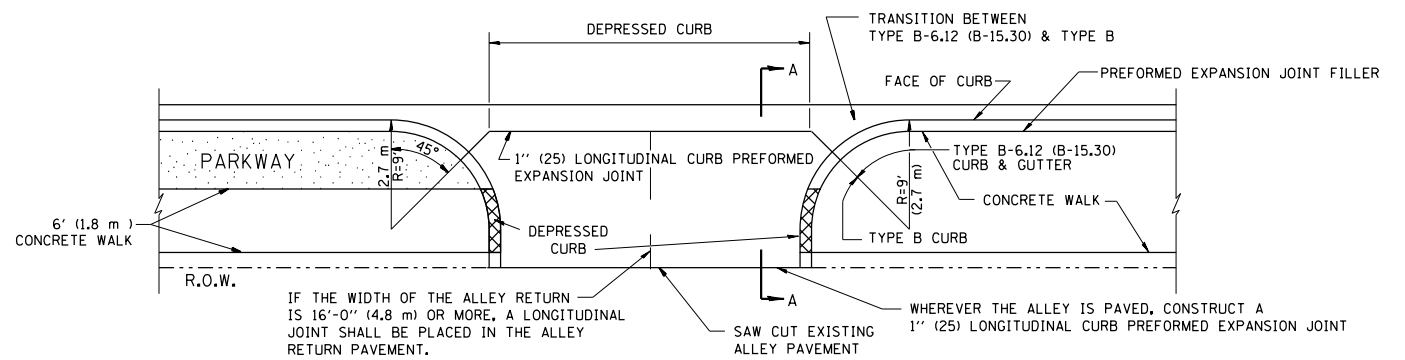
1. ONE-HALF INCH THICK EXPANSION JOINTS SHALL BE PLACED BETWEEN THE SIDEWALK AND ALL STRUCTURES SUCH AS LIGHT STANDARDS, TRAFFIC LIGHT STANDARDS, MANHOLES, WHICH EXTEND THROUGH THE SIDEWALK.
2. 3/4" (20) THICK EXPANSION JOINTS SHALL BE PLACED AT INTERVALS OF NOT MORE THAN 100 FEET (30 METERS) IN THE SIDEWALK, WHERE THE SIDEWALK IS CONSTRUCTED ADJACENT TO PAVEMENT OR CURB HAVING EXPANSION JOINTS, THE EXPANSION JOINTS IN THE SIDEWALK SHALL BE PLACED OPPOSITE THE EXISTING EXPANSION JOINTS AS NEARLY AS PRACTICABLE. EXPANSION JOINTS SHALL ALSO BE PLACED WHERE THE SIDEWALK ABUTS EXISTING SIDEWALKS, BETWEEN DRIVEWAY PAVEMENT AND SIDEWALK, AND BETWEEN SIDEWALK AND CURBS WHERE THE SIDEWALK ABUTS A CURB.



SLOPE FOR SIDEWALK  
1" (25) IN 3'-0" (0.9 m) IN CHICAGO

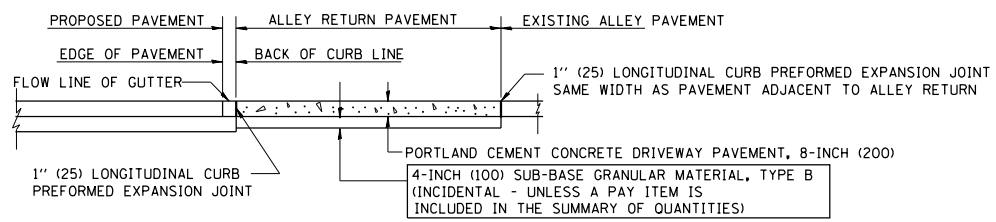
PORTLAND CEMENT CONCRETE SIDEWALK DETAILS

NOTES: NO EXTRA COMPENSATION SHALL BE ALLOWED FOR THE GUTTER FLARE



IF THE WIDTH OF THE ALLEY RETURN IS 16'-0" (4.8 m) OR MORE, A LONGITUDINAL JOINT SHALL BE PLACED IN THE ALLEY RETURN PAVEMENT.

WHEREVER THE ALLEY IS PAVED, CONSTRUCT A 1" (25) LONGITUDINAL CURB PREFORMED EXPANSION JOINT



SECTION A-A

ALLEY RETURN DETAIL

ALL DIMENSIONS ARE IN INCHES (MILLIMETERS) UNLESS OTHERWISE SHOWN

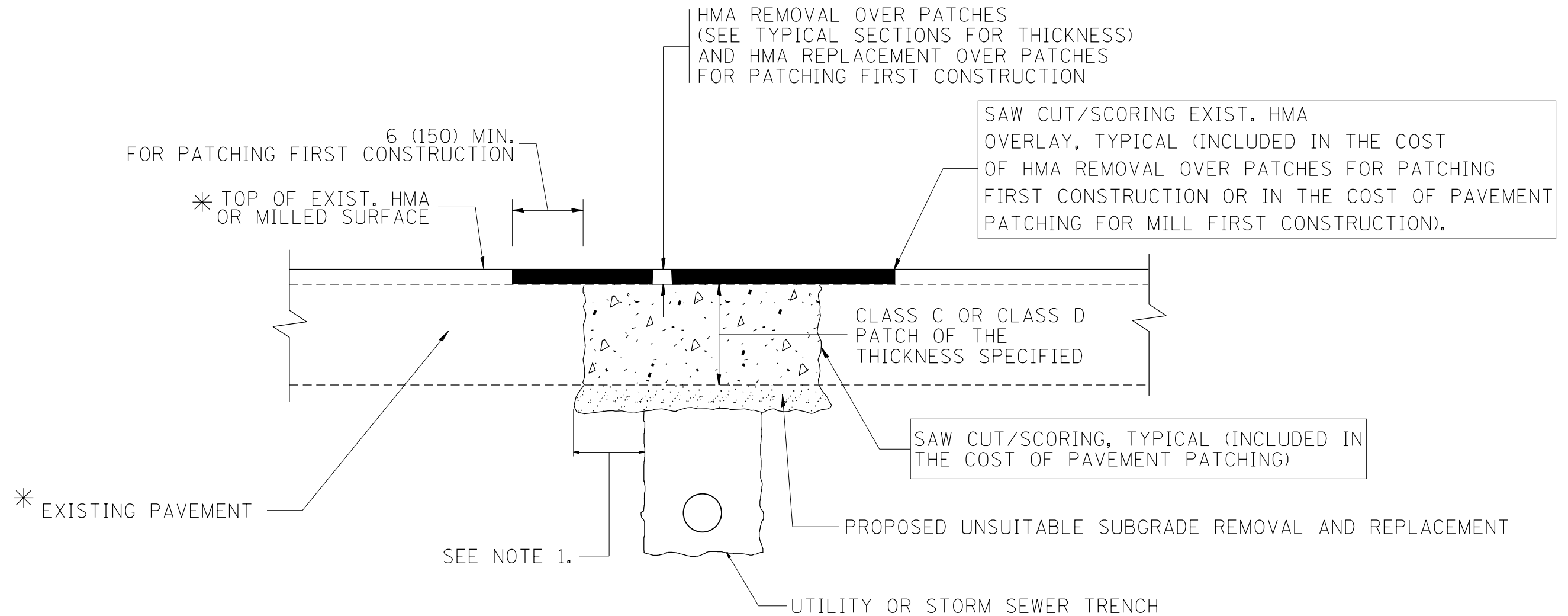
|   |                               |                       |           |
|---|-------------------------------|-----------------------|-----------|
| FILE NAME =                                     | USER NAME = guillaumejp       | DESIGNED - M. DE YONG | REVISED - |
| et:\pw\work\p\id\guillaumejp\d0430033\01std.dgn |                               | DRAWN -               | REVISED - |
|   | PLOT SCALE = 100.0000' / 1in. | CHECKED -             | REVISED - |
|   | PLOT DATE = 3/31/2015         | DATE - 06-13-90       | REVISED - |

STATE OF ILLINOIS  
DEPARTMENT OF TRANSPORTATION

CITY OF CHICAGO  
DETAILS FOR P.C. CONCRETE DRIVEWAY, ALLEY RETURN AND SIDEWALK

SCALE: NONE SHEET NO. 1 OF 1 SHEETS STA. TO STA.

|   |          |                    |              |           |
|---|----------|--------------------|--------------|-----------|
| F.A. RTE.                                       | SECTION  | COUNTY             | TOTAL SHEETS | SHEET NO. |
| OR 22   | 1112R5-2 | COOK               | 19           | 9         |
| BD400-03 (BD-17)                                |          | CONTRACT NO. 62A57 |              |           |
| FED. ROAD DIST. NO. 1 ILLINOIS FED. AID PROJECT |          |                    |              |           |



\* SEE TYPICAL SECTIONS FOR THICKNESS AND MATERIALS

**NOTES:**

1. THE WIDTH OF THE FULL DEPTH PATCH OVER A TRENCH SHALL BE 12 (300) WIDER ON EACH SIDE OF THE TRENCH.
2. FOR METHOD OF MEASUREMENT AND BASIS OF PAYMENT, SEE RECURRING SPECIAL PROVISION "PATCHING WITH HOT-MIX ASPHALT OVERLAY REMOVAL".

SEQUENCE OF CONSTRUCTION (PATCHING FIRST)

1. REMOVE THE EXISTING HMA MATERIAL OVER THE AREA TO BE PATCHED.
2. REMOVE AND REPLACE WITH CLASS C OR D PATCH.
3. REPLACE HMA MATERIAL OVER THE AREA TO BE PATCHED.

SEQUENCE OF CONSTRUCTION (MILLING FIRST)

1. MILL HMA FIRST IF THERE IS AT LEAST 4 1/2 INCHES OR MORE OF HMA MATERIAL ON TOP OF THE EXISTING PAVEMENT OR IF THE PAVEMENT IS FULL DEPTH HMA. A MINIMUM OF 2 INCHES OF HMA MATERIAL SHALL BE IN PLACE AFTER MILLING.
2. REMOVE AND REPLACE WITH FULL DEPTH CLASS D PATCHES TO TOP OF MILLED SURFACE.

ALL DIMENSIONS ARE IN INCHES (MILLIMETERS) UNLESS OTHERWISE SHOWN.

|   |                               |                    |                             |
|---|-------------------------------|--------------------|-----------------------------|
| FILE NAME =                                     | USER NAME = guillaumejp       | DESIGNED - R. SHAH | REVISED - A. ABBAS 04-27-98 |
| et:\pwork\pwork\guillaumejp\0430033\0430033.dgn |                               | DRAWN -            | REVISED - R. BORO 01-01-07  |
|   | PLOT SCALE = 100.0000' / 1in. | CHECKED -          | REVISED - R. BORO 09-04-07  |
|   | PLOT DATE = 3/31/2015         | DATE - 10-25-94    | REVISED - K. ENG 10-27-08   |

**STATE OF ILLINOIS  
DEPARTMENT OF TRANSPORTATION**

|  |                         |      |         |
|--|-------------------------|------|---------|
| <b>PAVEMENT PATCHING FOR<br/>HMA SURFACED PAVEMENT</b> |                         |      |         |
| SCALE: NONE  | SHEET NO. 1 OF 1 SHEETS | STA. | TO STA. |

|   |          |                           |              |           |
|---|----------|---------------------------|--------------|-----------|
| F.A. RTE.                                       | SECTION  | COUNTY                    | TOTAL SHEETS | SHEET NO. |
| OR 22   | 1112R5-2 | COOK                      | 19           | 10        |
| <b>BD400-04 (BD-22)</b>                         |          | <b>CONTRACT NO. 62A57</b> |              |           |
| FED. ROAD DIST. NO. 1 ILLINOIS FED. AID PROJECT |          |                           |              |           |

VARIABLE - TO MEET EXISTING DIMENSIONS AND FIELD CONDITIONS (SEE NOTE ②)

PROP. CONC. CURB OR CURB AND GUTTER REPLACEMENT IN ACCORDANCE WITH STATE STANDARD 606001. (SEE NOTE ②)

SAW CUT FULL DEPTH - INCLUDED IN THE COST OF SIDEWALK, DRIVEWAY OR MEDIAN SURFACE REMOVAL PAY ITEM.

SEE STATE STANDARD 606001  
EXISTING OR PROPOSED HMA SURFACE (IF APPLICABLE)

18" (450) MAX.

1/4" (5) \*\*

EXISTING SIDEWALK, DRIVEWAY, MEDIAN SURFACE, SOD OR GROUND.

PROPOSED SIDEWALK, DRIVEWAY PAVEMENT, MEDIAN SURFACE OR SODDING SALT TOLERANT WITH TOP SOIL, 4" (100) SOD RESTORATION (SEE NOTE ①).

EXISTING CONCRETE PAVEMENT, CONCRETE BASE COURSE OR FLEXIBLE PAVEMENT

3" (75) MIN.

SUITABLE BACKFILL MATERIAL (INCLUDED IN THE COST OF CURB OR CURB AND GUTTER REMOVAL AND REPLACEMENT)

PROPOSED 3/4" (20) PREFORMED EXPANSION JOINT AT CONCRETE SIDEWALKS, DRIVEWAYS, AND MEDIANS. (INCLUDED IN THE COST OF CURB OR CURB AND GUTTER REMOVAL AND REPLACEMENT.)

\* 3" (75) MINIMUM FROM TOP AND BOTTOM OF THE CONCRETE PAVEMENT OR BASE COURSE.

\*\* IF THE FINAL SURFACE OF THE PAVEMENT IS CONCRETE, THE GUTTER IS TO BE FLUSH WITH THE PAVEMENT.

UNSUITABLE SUB-BASE MATERIAL TO BE REMOVED, IF DIRECTED BY THE ENGINEER, SHALL BE REPLACED WITH EITHER SUB-BASE GRANULAR MATERIAL, TYPE B OR ADDITIONAL THICKNESS OF CONCRETE.

REMOVAL AND REPLACEMENT 4" (100) OR LESS IS INCLUDED IN THE COST OF CURB OR CURB AND GUTTER REMOVAL AND REPLACEMENT.

REMOVAL AND REPLACEMENT IN EXCESS OF 4" (100) WILL BE PAID FOR IN ACCORDANCE WITH ARTICLE 109.04 OF THE STANDARD SPECIFICATIONS.

NOTE: ① SIDEWALK, DRIVEWAY PAVEMENT OR MEDIAN SURFACE SHALL BE SIMILAR TO THE MATERIAL BEING REMOVED AND WILL BE PAID FOR SEPARATELY.

SODDING, SALT TOLERANT AND TOP SOIL, FURNISH AND PLACE 4" WILL BE PAID FOR SEPARATELY.

② FERTILIZER FOR THE PLACEMENT OF THE SOD IS NOT REQUIRED

③ CURB OR CURB AND GUTTER REPLACEMENT SHALL MATCH THE SHAPE OF THE EXISTING CURB OR CURB AND GUTTER UNLESS OTHERWISE SPECIFIED.

④ FOR CURB OR CURB AND GUTTER REMOVAL AND REPLACEMENT ADJACENT TO FLEXIBLE PAVEMENT DELETE EPOXY COATED TIE BARS.

⑤ LONGITUDINAL BARS, IF ENCOUNTERED IN THE EXISTING CURB OR CURB AND GUTTER, ARE NOT TO BE REPLACED. CUTTING AND REMOVING LONGITUDINAL BARS SHALL BE INCLUDED IN THE COST OF CURB OR CURB AND GUTTER REMOVAL AND REPLACEMENT.

⑥ THE COST OF HMA SURFACE REMOVAL IN THE EXISTING GUTTER FLAG SHALL BE INCLUDED IN THE COST OF THE CURB AND GUTTER REMOVAL AND REPLACEMENT.

⑦ THE REMOVAL AND REPLACEMENT OF THE EXISTING CURB OR CURB AND GUTTER SHALL BE DONE IN ACCORDANCE WITH THE APPLICABLE PORTIONS OF SECTION 440 AND 606 OF THE STANDARD SPECIFICATIONS.

⑧ THE LOCATIONS OF REMOVAL AND REPLACEMENT OF EXISTING CURB OR CURB AND GUTTER SHALL BE DETERMINED BY THE RESIDENT ENGINEER AT THE TIME OF CONSTRUCTION.

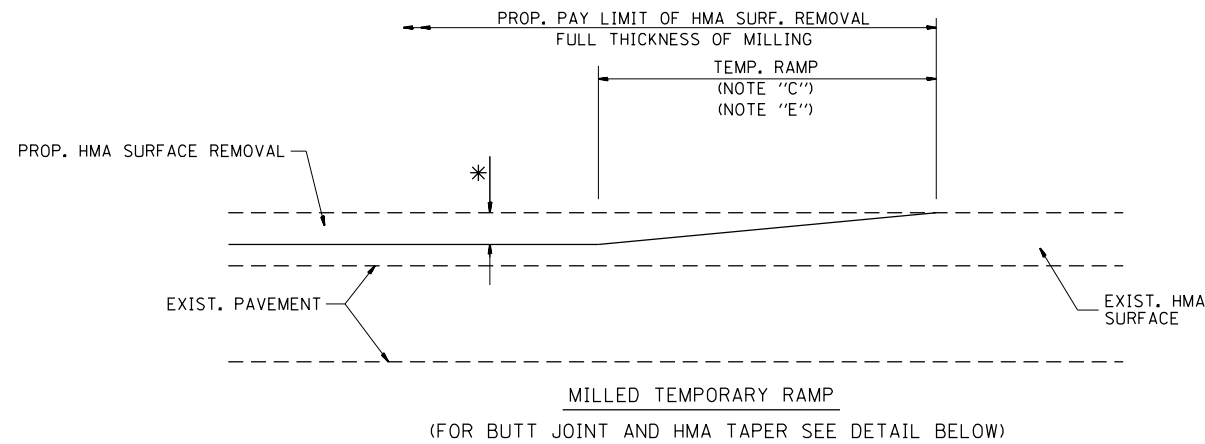
PROPOSED #6 (20) EPOXY COATED TIE BARS 24" (600) LONG AT 24" (600) CENTERS WILL NOT BE PAID FOR SEPARATELY. DELETE EPOXY COATED TIE BARS IF EXISTING TIE BARS ARE USUABLE AS DETERMINED BY THE ENGINEER. (SEE NOTE ③).

BASIS OF PAYMENT:  
THIS WORK WILL BE PAID FOR AT THE CONTRACT UNIT PRICE PER FOOT (METER) FOR "CURB REMOVAL AND REPLACEMENT" OR "COMBINATION CONCRETE CURB AND GUTTER REMOVAL AND REPLACEMENT".

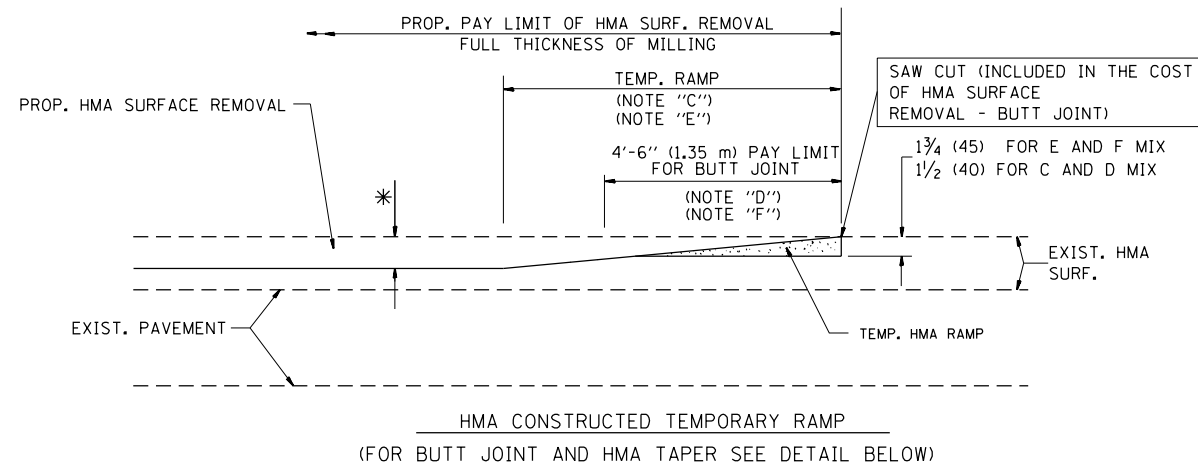
# CURB OR CURB AND GUTTER REMOVAL AND REPLACEMENT

ALL DIMENSIONS ARE IN INCHES (MILLIMETERS) UNLESS OTHERWISE SHOWN.

|  |                              |                      |                             |   |  |                         |              |   |          |        |              |           |
|--|------------------------------|----------------------|-----------------------------|---|--|-------------------------|--------------|---|----------|--------|--------------|-----------|
| FILE NAME =  | USER NAME = guillaumefp      | DESIGNED - A. HOUSEH | REVISED - R. SHAH 10-03-96  | <b>STATE OF ILLINOIS<br/>DEPARTMENT OF TRANSPORTATION</b> | <b>CURB OR CURB AND GUTTER<br/>REMOVAL AND REPLACEMENT</b> |                         |              | F.A. RTE.                                       | SECTION  | COUNTY | TOTAL SHEETS | SHEET NO. |
| et:\pw\work\p\dot\guillaumefp\d0430033\CostStd.dgn |                              | DRAWN -              | REVISED - A. ABBAS 03-21-97 |   |  |                         |              | OR 22   | 1112RS-2 | COOK   | 19           | 11        |
|  | PLOT SCALE = 100.0000' / in. | CHECKED -            | REVISED - M. GOMEZ 01-22-01 |   | BD600-06 (BD-24)   |                         |              | CONTRACT NO. 62A57                              |          |        |              |           |
|  | PLOT DATE = 3/31/2015        | DATE - 03-11-94      | REVISED - R. BORO 12-15-09  |   | SCALE: NONE  | SHEET NO. 1 OF 1 SHEETS | STA. TO STA. | FED. ROAD DIST. NO. 1 ILLINOIS FED. AID PROJECT |          |        |              |           |

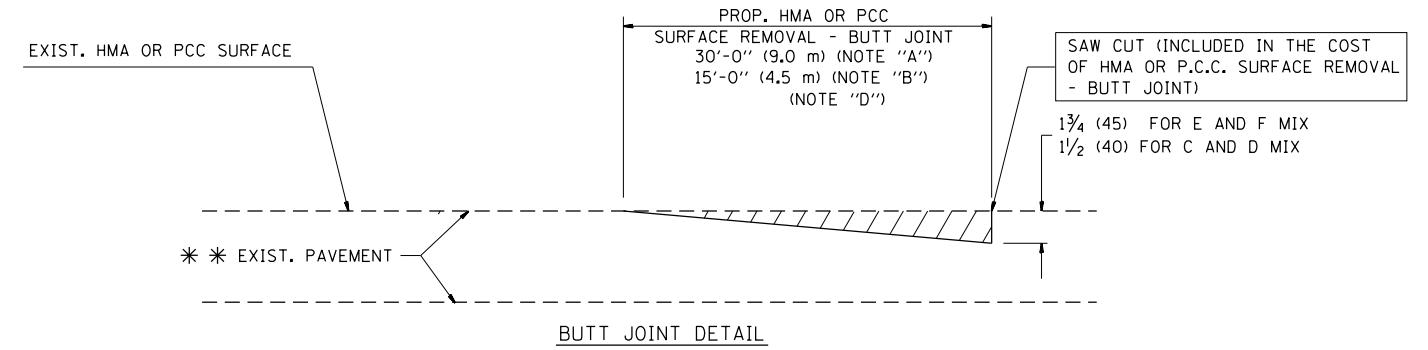


**OPTION 1**

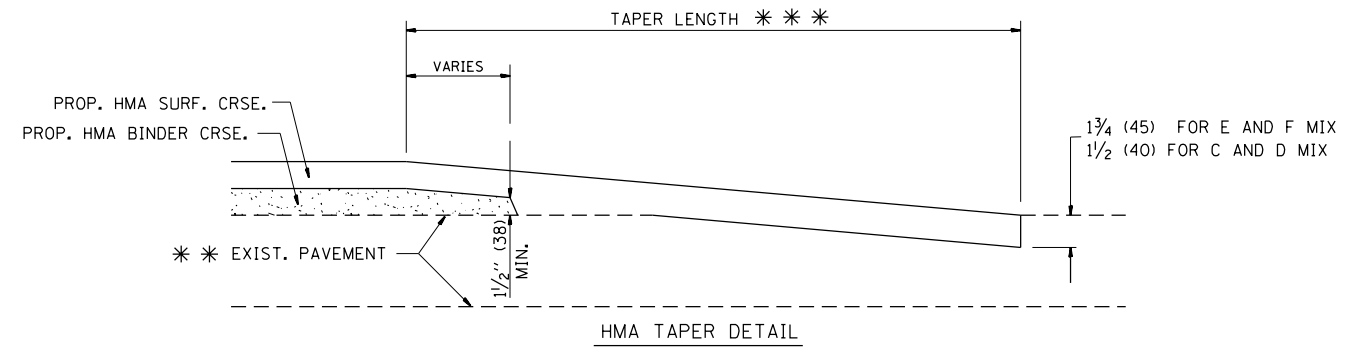


**OPTION 2**

**TYPICAL TEMPORARY RAMP**



**BUTT JOINT DETAIL**



**HMA TAPER DETAIL**

**TYPICAL BUTT JOINT AND HMA TAPER FOR RESURFACING ONLY**

\*\*\* PC CONCRETE, HMA OR HMA RESURFACED PAVEMENT.

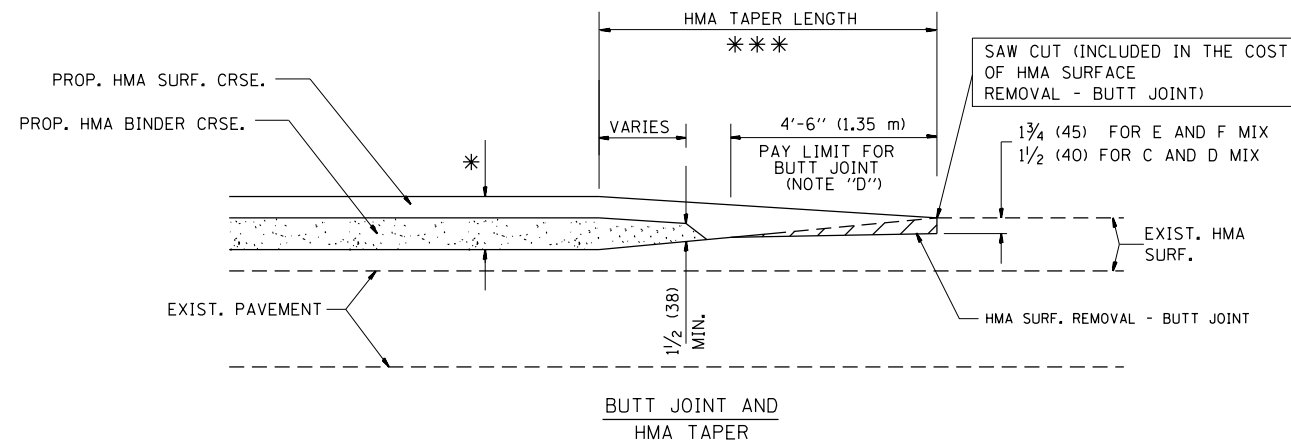
**NOTES**

- A: MAINLINE ROADWAYS AND MAJOR SIDE ROADS.
  - B: MINOR SIDE ROADS.
  - C: THE TEMP. RAMP SHALL BE CONSTRUCTED IMMEDIATELY UPON REMOVAL OF THE EXISTING HMA SURFACE.
  - D: THE BUTT JOINT SHALL BE CONSTRUCTED IMMEDIATELY PRIOR TO PLACING THE PROPOSED HMA COURSES.
  - E: TAPER THE TEMP. RAMP AT A RATE OF 3'-0" (900 mm) PER 1 INCH (25 mm) OF MILLING THICKNESS.
  - F: INSTALLATION AND REMOVAL OF THE 4'-6" (1.35 m) TEMP. RAMP IS INCLUDED IN COST OF HMA SURFACE REMOVAL - BUTT JOINT
  - G: SEE ARTICLE 406.08 AND 406.14 OF THE STANDARD SPECIFICATIONS FOR "HMA AND/OR PCC SURFACE REMOVAL, BUTT JOINT".
- \* SEE TYPICAL SECTIONS FOR MILLING THICKNESS.
- \*\*\* 20'-0" (6.1 m) PER 1 (25) RESURFACING (NOTE "A")  
10'-0" (3.0 m) PER 1 (25) RESURFACING (NOTE "B")

**BASIS OF PAYMENT:**

THE BUTT JOINT WILL BE PAID FOR AT THE CONTRACT UNIT PRICE PER SQUARE YARD (SQUARE METER) FOR "HOT-MIX ASPHALT SURFACE REMOVAL - BUTT JOINT" OR FOR "PORTLAND CEMENT CONCRETE SURFACE REMOVAL - BUTT JOINT".

ALL DIMENSIONS ARE IN INCHES (MILLIMETERS) UNLESS OTHERWISE SHOWN.



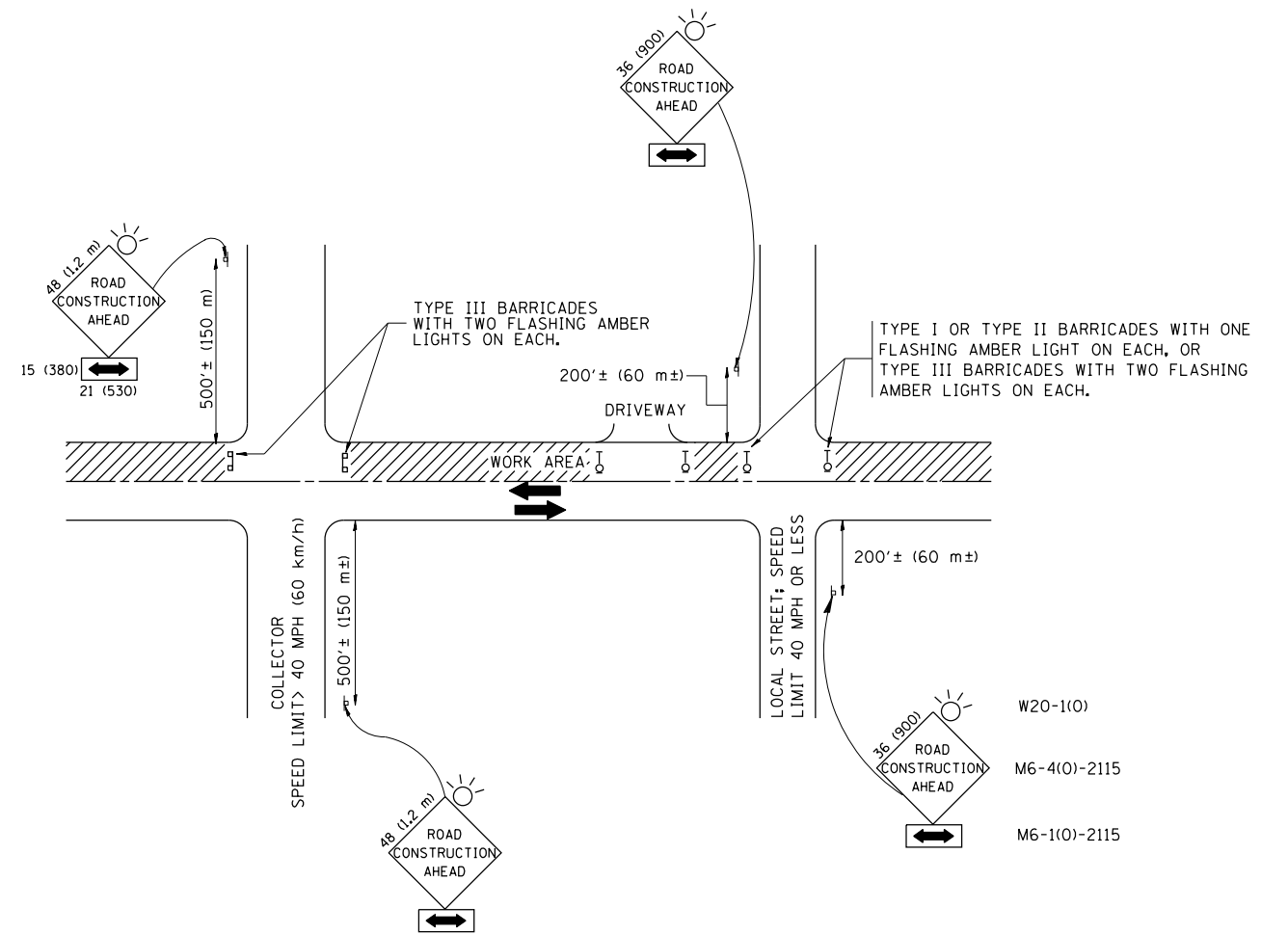
**TYPICAL BUTT JOINT AND HMA TAPER FOR MILLING AND RESURFACING**

|  |                              |                       |                             |
|--|------------------------------|-----------------------|-----------------------------|
| FILE NAME =  | USER NAME = guillaumejp      | DESIGNED - M. DE YONG | REVISED - R. SHAH 10-25-94  |
| et:\pw\work\p\dot\guillaumejp\d0430033\CostStd.dgn |                              | DRAWN -               | REVISED - A. ABBAS 03-21-97 |
|  | PLOT SCALE = 100.0000' / in. | CHECKED -             | REVISED - M. GOMEZ 04-06-01 |
|  | PLOT DATE = 3/31/2015        | DATE - 06-13-90       | REVISED - R. BORO 01-01-07  |

**STATE OF ILLINOIS  
DEPARTMENT OF TRANSPORTATION**

|   |                                      |
|---|--------------------------------------|
| <b>BUTT JOINT AND<br/>HMA TAPER DETAILS</b> |                                      |
| SCALE: NONE                                 | SHEET NO. 1 OF 1 SHEETS STA. TO STA. |

|   |          |                           |              |           |
|---|----------|---------------------------|--------------|-----------|
| F.A. RTE.                                       | SECTION  | COUNTY                    | TOTAL SHEETS | SHEET NO. |
| OR 22   | 1112RS-2 | COOK                      | 19           | 12        |
| <b>BD400-05 BD32</b>                            |          | <b>CONTRACT NO. 62A57</b> |              |           |
| FED. ROAD DIST. NO. 1 ILLINOIS FED. AID PROJECT |          |                           |              |           |



## TRAFFIC CONTROL AND PROTECTION FOR SIDE ROADS, INTERSECTIONS, AND DRIVEWAYS

### NOTES:

#### A. FOR NO LANE RESTRICTION ON THE SIDE ROAD OR DRIVEWAYS

1. SIDE ROAD WITH A SPEED LIMIT OF 40 MPH (60 km/h) OR LESS AS SHOWN ON THE DRAWING AND AS DIRECTED BY THE ENGINEER:

a) ONE ROAD CONSTRUCTION AHEAD SIGN 36 x 36 (900x900) WITH A FLASHER AND FLAG MOUNTED ON IT APPROXIMATELY 200' (60 m) IN ADVANCE OF THE MAIN ROUTE.

b) THE CLOSED PORTION OF THE MAIN ROUTE SHALL BE PROTECTED BY BLOCKING WITH TYPE I, TYPE II OR TYPE III BARRICADES, 1/3 OF THE CROSS SECTION OF THE CLOSED PORTION.

2. SIDE ROAD WITH A SPEED LIMIT GREATER THAN 40 MPH (60 km/h) AS SHOWN ON THE DRAWING AND AS DIRECTED BY THE ENGINEER:

a) ONE ROAD CONSTRUCTION AHEAD SIGN 48 x 48 (1.2 m x 1.2 m) WITH A FLASHER MOUNTED ON IT APPROXIMATELY 500' (150 m) IN ADVANCE OF THE MAIN ROUTE.

b) THE CLOSED PORTION OF THE MAIN ROUTE SHALL BE PROTECTED BY BLOCKING WITH TYPE III BARRICADES, 1/2 OF THE CROSS SECTION OF THE CLOSED PORTION.

3. WHEN THE SIDE ROAD LIES BETWEEN THE BEGINNING OF THE MAINLINE SIGNING AND THE WORK ZONE, A SINGLE HEADED ARROW (M6-1) SHALL BE USED IN LIEU OF THE DOUBLE HEADED ARROW (M6-4).

#### B. FOR A LANE CLOSURE ON A SIDE ROAD OR DRIVEWAY:

USE APPLICABLE PORTIONS OF THE TYPICAL APPLICATION OF TRAFFIC CONTROL DEVICES (STD. 701501, STD. 701606 OR THE APPROPRIATE STANDARD). THE SPACING OF SIGNS AND BARRICADES SHALL BE ADJUSTED FOR FIELD CONDITIONS AS DIRECTED BY THE ENGINEER. THE DIRECTIONAL ARROW SHALL BE COVERED OR REMOVED WHEN NO LONGER CONSISTENT WITH THE SIDE ROAD LANE CLOSURE.

C. ADVANCE WARNING SIGNS ARE TO BE OMITTED ON DRIVEWAY UNLESS OTHERWISE NOTED.

D. THE TRAFFIC CONTROL AND PROTECTION FOR SIDE ROADS, INTERSECTIONS, AND DRIVEWAYS SHALL BE INCIDENTAL TO THE COST OF SPECIFIED TRAFFIC CONTROL STANDARDS OR ITEMS.

All dimensions are in millimeters (inches) unless otherwise shown.

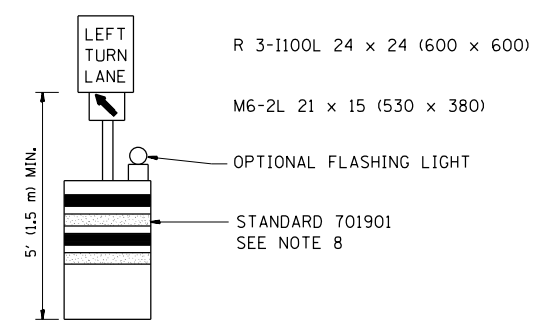
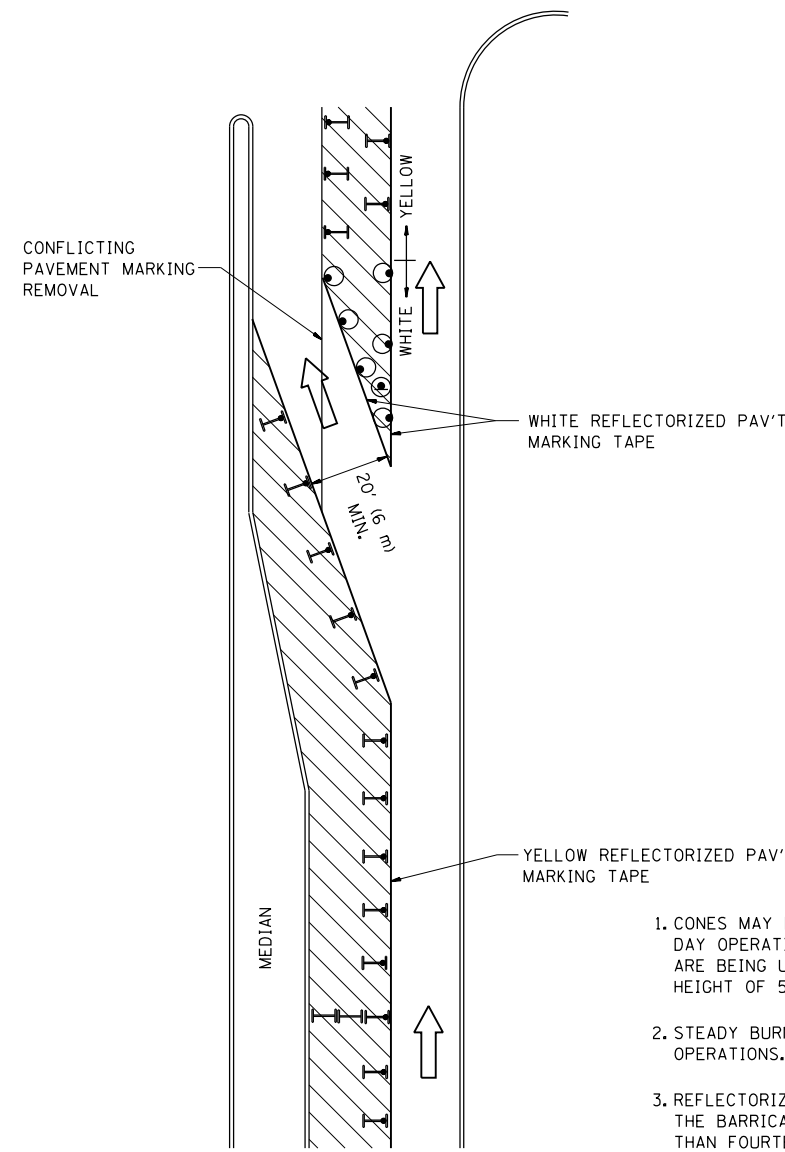
|  |                              |                |                                 |
|--|------------------------------|----------------|---------------------------------|
| FILE NAME =                                    | USER NAME = guillaumejp      | DESIGNED - LHA | REVISED - J. OBERLE 10-18-95    |
| et:\pwork\pwork\guillaumejp\d0430033\01std.dgn |                              | DRAWN -        | REVISED - A. HOUSEH 03-06-96    |
|  | PLOT SCALE = 100.0000' / in. | CHECKED -      | REVISED - A. HOUSEH 10-15-96    |
|  | PLOT DATE = 3/31/2015        | DATE - 06-89   | REVISED - T. RAMMACHER 01-06-00 |

**STATE OF ILLINOIS  
DEPARTMENT OF TRANSPORTATION**

**TRAFFIC CONTROL AND PROTECTION FOR  
SIDE ROADS, INTERSECTIONS, AND DRIVEWAYS**

SCALE: NONE SHEET NO. 1 OF 1 SHEETS STA. TO STA.

|   |          |                    |              |           |
|---|----------|--------------------|--------------|-----------|
| F.A. RTE.                                       | SECTION  | COUNTY             | TOTAL SHEETS | SHEET NO. |
| OR 22   | 1112RS-2 | COOK               | 19           | 13        |
| TC-10   |          | CONTRACT NO. 62A57 |              |           |
| FED. ROAD DIST. NO. 1 ILLINOIS FED. AID PROJECT |          |                    |              |           |

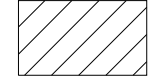
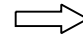
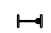


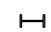


**GENERAL NOTES**

1. CONES MAY BE SUBSTITUTED FOR BARRICADES OR DRUMS AT HALF THE SPACING DURING DAY OPERATIONS. CONES SHALL BE A MINIMUM OF 28 (710) IN HEIGHT. WHEN CONES ARE BEING USED, THE "LEFT TURN LANE" SIGN MAY BE SKID MOUNTED AT A MINIMUM HEIGHT OF 5' (1.5 m).
2. STEADY BURNING LIGHTS WILL NOT BE REQUIRED ON BARRICADES OR DRUMS FOR DAY OPERATIONS. ALL LIGHTS SHALL BE MONODIRECTIONAL.
3. REFLECTORIZED TEMPORARY PAVEMENT MARKING TAPE SHALL BE PLACED THROUGHOUT THE BARRICADED AREA OF EACH TURN BAY WHERE THE CLOSURE TIME IS GREATER THAN FOURTEEN DAYS.
4. THIS APPLICATION ALSO APPLIES WHEN WORK IS BEING PERFORMED IN THE RIGHT LANE(S) AND THE RIGHT TURN BAY IS TO REMAIN OPEN. UNDER THIS CONDITION, "RIGHT TURN LANE" R3-100 24 x 24 (600 x 600) AND M6-2R 21 x 15 (530 x 380) SHALL BE USED.
5. THESE CONTROLS SHALL SUPPLEMENT MAINLINE TRAFFIC CONTROL FOR LANE CLOSURES.
6. LONGITUDINAL DIMENSIONS MAY BE ADJUSTED TO FIT FIELD CONDITIONS.
7. FORM OPER 725 IS REQUIRED.
8. IF A DRUM OR TYPE II BARRICADE WITH AN ATTACHED SIGN PANEL WHICH MEETS NCHRP 350 REQUIREMENTS IS NOT AVAILABLE, THE SIGNS SHALL BE MOUNTED, ABOVE THE BARRICADES, ON SEPARATE SIGNS SUPPORTS THAT MEET NCHRP 350 PREQUIREMENTS.
9. TRAFFIC CONTROL AND PROTECTION AT TURN BAYS (TO REMAIN OPEN TO TRAFFIC) SHALL BE INCLUDED IN THE COST SPECIFIED TRAFFIC CONTROL STANDARDS OR ITEMS.

All dimensions are in inches (millimeters) unless otherwise shown.

**LEGEND**

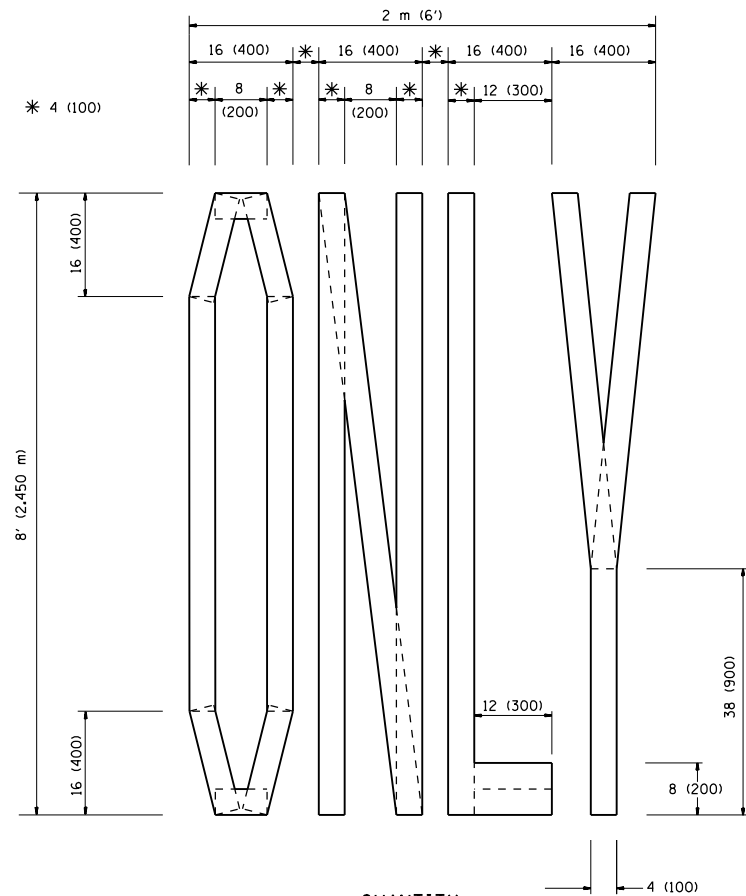
-  WORK AREA
-  LANE OPEN TO TRAFFIC
-  TYPE I OR II BARRICADE WITH STEADY BURN LIGHT
-  DRUM WITH STEADY BURN LIGHT
-  DRUM WITH SIGN (WITH OPTIONAL FLASHING LIGHT) SEE DETAIL
-  TYPE I OR II CHECK BARRICADE WITH FLASHING LIGHT

|  |                              |                                |                            |
|--|------------------------------|--------------------------------|----------------------------|
| FILE NAME =  | USER NAME = guillaumejp      | REVISED -T. RAMMACHER 09-08-94 | REVISED - R. BORO 09-14-09 |
| et:\pw\work\p\dot\guillaumejp\d0430033\CostStd.dgn |                              | REVISED - A. HOUSEH 11-07-95   | REVISED -                  |
|  | PLOT SCALE = 100.0000' / in. | REVISED - A. HOUSEH 10-12-96   | REVISED -                  |
|  | PLOT DATE = 3/31/2015        | REVISED -T. RAMMACHER 01-06-00 | REVISED -                  |

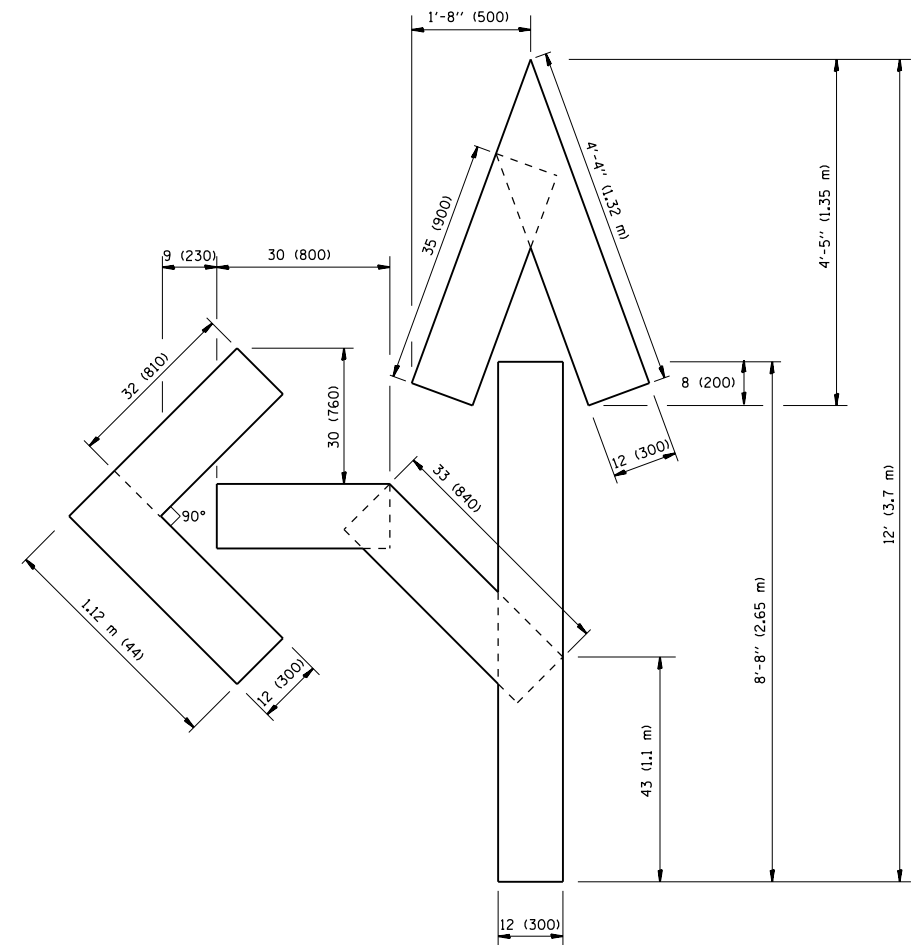
**STATE OF ILLINOIS  
DEPARTMENT OF TRANSPORTATION**

| TRAFFIC CONTROL AND PROTECTION AT TURN BAYS<br>(TO REMAIN OPEN TO TRAFFIC) |                         |      |         |
|--|-------------------------|------|---------|
| SCALE: NONE  | SHEET NO. 1 OF 1 SHEETS | STA. | TO STA. |

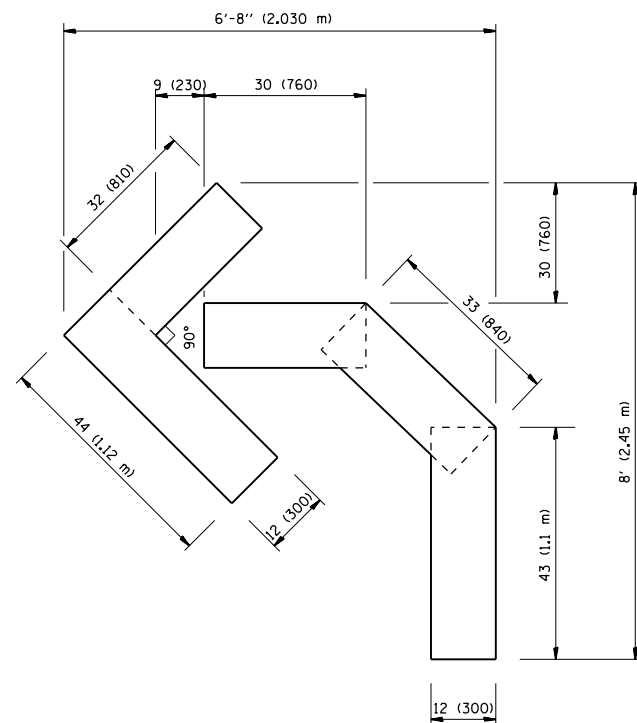
|   |          |                    |              |           |
|---|----------|--------------------|--------------|-----------|
| F.A. RTE.                                       | SECTION  | COUNTY             | TOTAL SHEETS | SHEET NO. |
| OR 22   | 1112RS-2 | COOK               | 19           | 14        |
| TC-14   |          | CONTRACT NO. 62A57 |              |           |
| FED. ROAD DIST. NO. 1 ILLINOIS FED. AID PROJECT |          |                    |              |           |



QUANTITY  
 4 (100) LINE = 64.1 ft. (19.7 m)  
 21.1 sq. ft. (1.97 sq. m)



QUANTITY  
 4 (100) LINE = 82.5 ft. (25.3 m)  
 27.5 sq. ft. (2.53 sq. m)



QUANTITY  
 4 (100) LINE = 45.5 ft. (13.9 m)  
 15.2 sq. ft. (1.39 sq. m)

All dimensions are in inches (millimeters) unless otherwise shown.

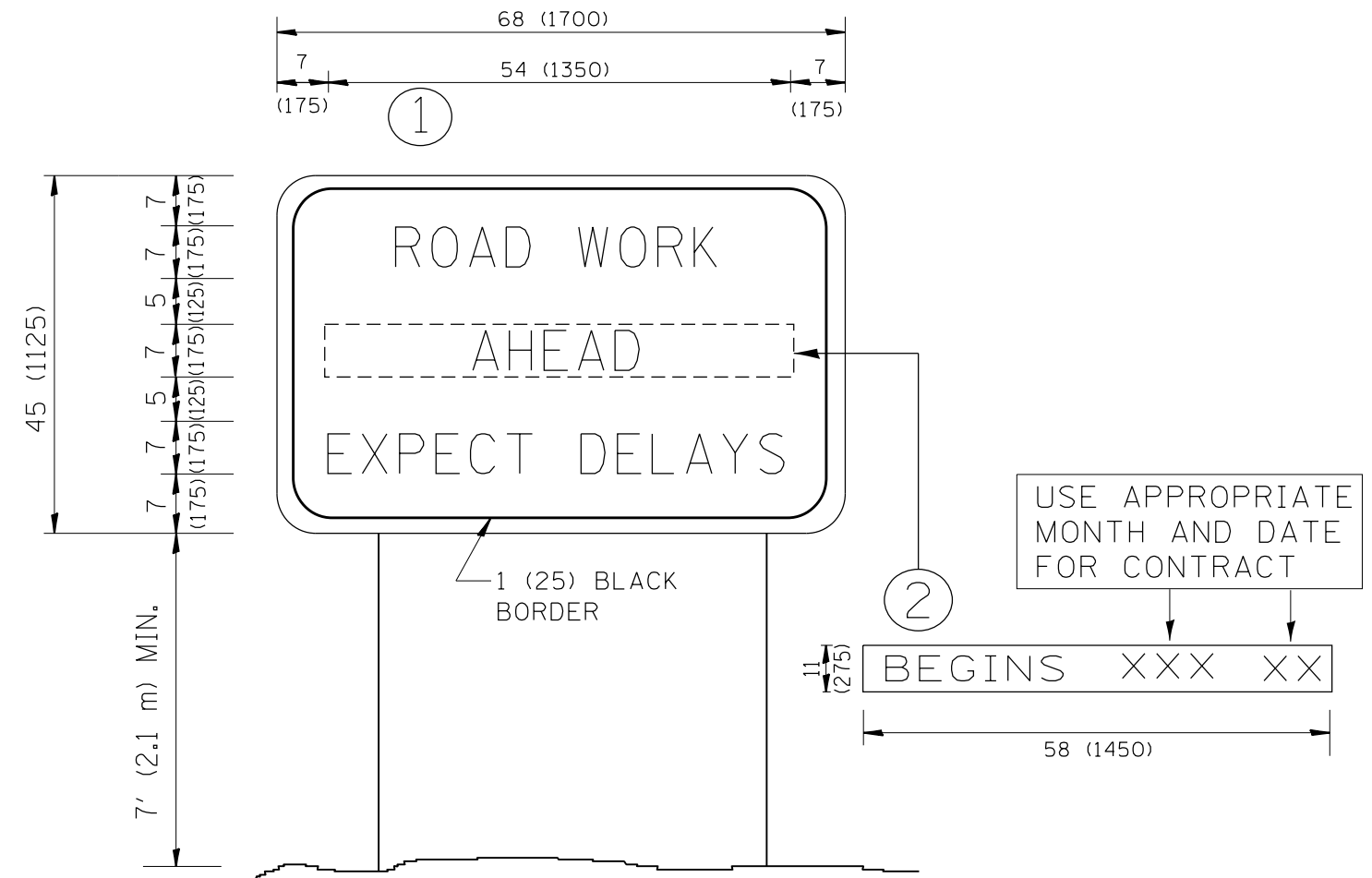
|  |                              |                 |                                |
|--|------------------------------|-----------------|--------------------------------|
| FILE NAME =                                      | USER NAME = guillaumefp      | DESIGNED -      | REVISED -T. RAMMACHER 06-05-96 |
| et:\pw\work\p\dot\guillaumefp\d0430033\01std.dgn |                              | DRAWN -         | REVISED -T. RAMMACHER 11-04-97 |
|  | PLOT SCALE = 100.0000' / in. | CHECKED -       | REVISED -T. RAMMACHER 03-02-98 |
|  | PLOT DATE = 3/31/2015        | DATE - 09-18-94 | REVISED -E. GOMEZ 08-28-00     |

STATE OF ILLINOIS  
 DEPARTMENT OF TRANSPORTATION

PAVEMENT MARKING LETTERS AND SYMBOLS  
 FOR TRAFFIC STAGING

SCALE: NONE SHEET NO. 1 OF 1 SHEETS STA. TO STA.

|   |          |                    |              |           |
|---|----------|--------------------|--------------|-----------|
| F.A. RTE.                                       | SECTION  | COUNTY             | TOTAL SHEETS | SHEET NO. |
| OR 22   | 1112R5-2 | COOK               | 19           | 15        |
| TC-16   |          | CONTRACT NO. 62A57 |              |           |
| FED. ROAD DIST. NO. 1 ILLINOIS FED. AID PROJECT |          |                    |              |           |



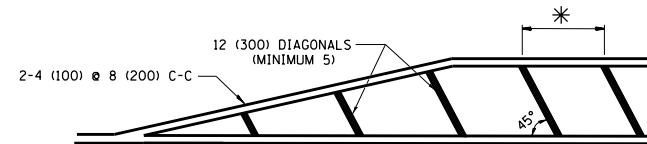
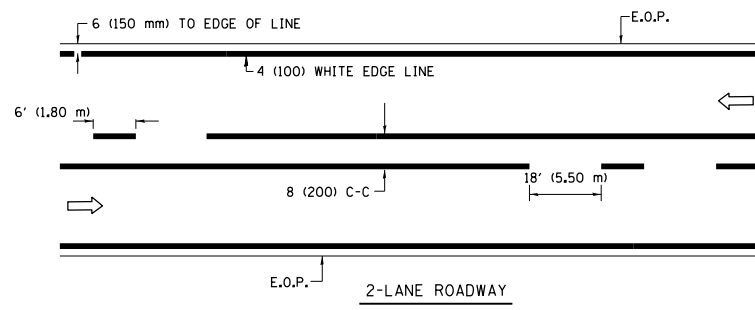
**NOTES:**

1. USE BLACK LETTERING ON ORANGE BACKGROUND.
2. ERECT SIGNS IN ADVANCE OF THE LOCATION FOR THE "ROAD CONSTRUCTION AHEAD" SIGN AT LOCATIONS AS DIRECTED BY THE ENGINEER.
3. ERECT SIGN ① WITH INSTALLED PANEL ② ONE WEEK PRIOR TO THE START OF CONSTRUCTION.
4. REMOVE PANEL ② SOON AFTER THE START OF CONSTRUCTION.
5. SEE SPECIAL PROVISION FOR "TEMPORARY INFORMATION SIGNING" FOR ADDITIONAL INFORMATION.
6. ONE SIGN ASSEMBLY EQUALS 25.70 SQ. FT. (2.3 SQ. M.)
7. SHALL BE PAID FOR AS TEMPORARY INFORMATION SIGNING.

ALL DIMENSIONS ARE IN INCHES (MILLIMETERS) UNLESS OTHERWISE SHOWN.

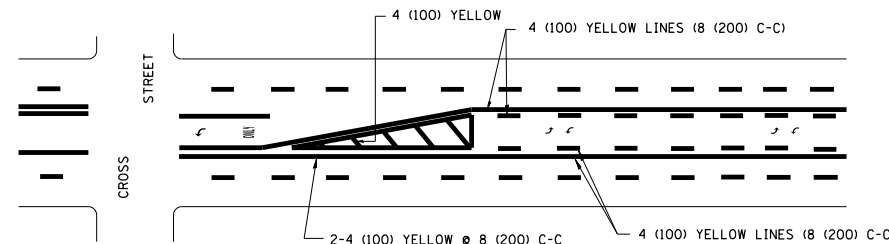
|  |                              |                            |                                 |   |   |              |                         |                           |              |   |
|--|------------------------------|----------------------------|---------------------------------|---|---|--------------|-------------------------|---------------------------|--------------|---|
| FILE NAME =  | USER NAME = guillaumejp      | DESIGNED -                 | REVISED - R. MIRS 09-15-97      | <b>STATE OF ILLINOIS<br/>DEPARTMENT OF TRANSPORTATION</b> | <b>ARTERIAL ROAD<br/>INFORMATION SIGN</b> | F.A. RTE.    | SECTION                 | COUNTY                    | TOTAL SHEETS | SHEET NO.   |
| et:\pw\work\p\dot\guillaumejp\d0430033\CostStd.dgn | DRAWN -                      | REVISED - R. MIRS 12-11-97 | OR 22                           |   |   | 1112RS-2     | COOK                    | 19                        | 16           |   |
|  | PLOT SCALE = 100.0000' / in. | CHECKED -                  | REVISED - T. RAMMACHER 02-02-99 |   |   | <b>TC-22</b> |                         | <b>CONTRACT NO. 62A57</b> |              |   |
|  | PLOT DATE = 3/31/2015        | DATE -                     | REVISED - C. JUCIUS 01-31-07    |   |   | SCALE: NONE  | SHEET NO. 1 OF 1 SHEETS | STA.                      | TO STA.      | FED. ROAD DIST. NO. 1   ILLINOIS   FED. AID PROJECT |



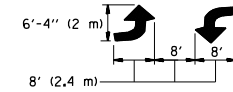


\* FOR MEDIAN LENGTHS WHERE DIAGONAL SPACING CANNOT BE ATTAINED, USE 5 (FIVE) EQUALLY SPACED DIAGONAL LINES.  
 \* DIAGONAL LINE SPACING: 20' (6.1 m) C-C

**PAINTED MEDIANS**

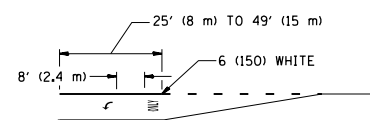
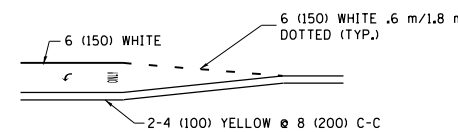


A MINIMUM OF TWO PAIRS OF TURN ARROWS SHALL BE USED, WHITE IN COLOR. ADDITIONAL PAIRS SHALL BE PLACED AT 200' (60 m) TO 300' (90 m) INTERVALS.



**MEDIAN WITH TWO-WAY LEFT TURN LANE**

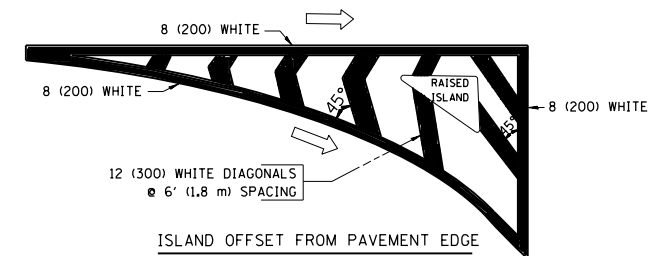
**TYPICAL PAINTED MEDIAN MARKING**



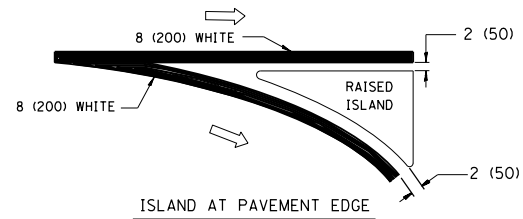
FULL SIZE LETTERS 8' (2.4 m) AND ARROWS SHALL BE USED.  
 AREA = 15.8 SQ. FT. (1.47 m<sup>2</sup>) ONLY AREA = 22.9 SQ. FT. (2.13 m<sup>2</sup>)  
 \* TURN LANES IN EXCESS OF 400' (120 m) IN LENGTH MAY HAVE AN ADDITIONAL SET OF ARROW - "ONLY" INSTALLED MIDWAY BETWEEN THE OTHER TWO SETS OF ARROW - "ONLY".

**TYPICAL LEFT (OR RIGHT) TURN LANE**

**TYPICAL TURN LANE MARKING**



**ISLAND OFFSET FROM PAVEMENT EDGE**

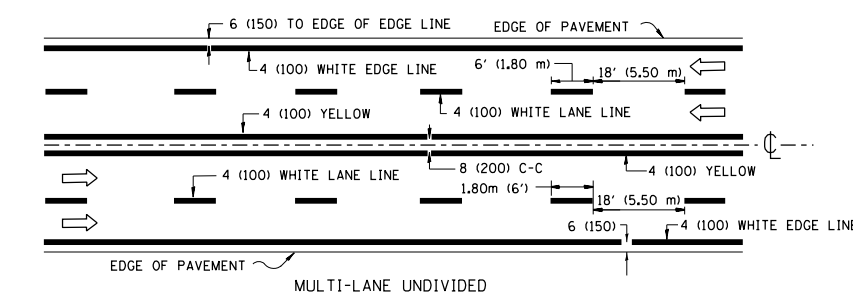


**TYPICAL ISLAND MARKING**

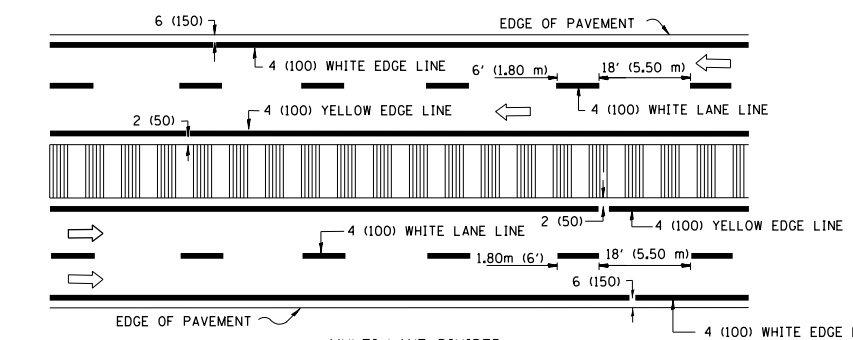
| TYPE OF MARKING   | WIDTH OF LINE  | PATTERN                         | COLOR   | SPACING / REMARKS  |
|---|--|---------------------------------|---|--|
| CENTERLINE ON 2 LANE PAVEMENT   | 4 (100)  | SKIP-DASH                       | YELLOW  | 6' (1.80 m) LINE WITH 18' (5.50 m) SPACE   |
| CENTERLINE ON MULTI-LANE UNDIVIDED PAVEMENT   | 2 @ 4 (100)  | SOLID                           | YELLOW  | 8 (200) C-C  |
| NO PASSING ZONE LINES: FOR ONE DIRECTION FOR BOTH DIRECTIONS                                      | 4 (100)<br>2 @ 4 (100)   | SOLID<br>SOLID                  | YELLOW<br>YELLOW                                  | 8 (200) C-C  |
| LANE LINES  | 4 (100)<br>5 (125) ON FREEWAYS   | SKIP-DASH<br>SKIP-DASH          | WHITE<br>WHITE                                    | 6' (1.80 m) LINE WITH 18' (5.50 m) SPACE   |
| DOTTED LINES (EXTENSIONS OF CENTER, LANE OR TURN LANE MARKINGS)                                   | SAME AS LINE BEING EXTENDED  | SKIP-DASH                       | SAME AS LINE BEING EXTENDED                       | 2' (600) LINE WITH 6' (1.8) SPACE  |
| EDGE LINES  | 4 (100)  | SOLID                           | YELLOW-LEFT<br>WHITE-RIGHT                        | OUTLINE MOUNTABLE MEDIANS IN YELLOW; EDGE LINES ARE NOT USED NEXT TO BARRIER CURB  |
| TURN LANE MARKINGS  | 6 (150) LINE; FULL SIZE LETTERS & SYMBOLS (8' (2.4 m))                       | SOLID                           | WHITE   | SEE TYPICAL TURN LANE MARKING DETAIL   |
| TWO WAY LEFT TURN MARKING   | 2 @ 4 (100) EACH DIRECTION<br>8' (2.4 m) LEFT ARROW                          | SKIP-DASH AND SOLID<br>IN PAIRS | YELLOW<br>WHITE                                   | 6' (1.8 m) LINE WITH 18' (5.50 m) SPACE FOR SKIP-DASH; 8 (200) C-C BETWEEN SOLID LINE AND SKIP-DASH LINE<br>SEE TYPICAL TWO-WAY LEFT TURN MARKING DETAIL           |
| CROSSWALK LINES<br>A. DIAGONALS (BIKE & EQUESTRIAN)<br>B. LONGITUDINAL BARS (SCHOOL & PEDESTRIAN) | 12 (300) @ 45°<br>24 (600) @ 90°   | SOLID<br>SOLID                  | WHITE<br>WHITE                                    | 2' (600) APART<br>2' (600) APART<br>SEE TYPICAL CROSSWALK MARKING DETAILS.   |
| STOP LINES  | 24 (600)   | SOLID                           | WHITE   | PLACE 4' (1.2 m) IN ADVANCE OF AND PARALLEL TO CROSSWALK, IF PRESENT. OTHERWISE, PLACE AT DESIRED STOPPING POINT. PARALLEL TO CROSSROAD CENTERLINE, WHERE POSSIBLE |
| PAINTED MEDIANS   | 2 @ 4 (100) WITH 12 (300) DIAGONALS @ 45°                                    | SOLID                           | YELLOW: TWO WAY TRAFFIC<br>WHITE: ONE WAY TRAFFIC | 8 (200) C-C FOR THE DOUBLE LINE<br>SEE TYPICAL PAINTED MEDIAN MARKING.   |
| GORE MARKING AND CHANNELIZING LINES   | 8 (200) WITH 12 (300) DIAGONALS @ 45°  | SOLID                           | WHITE   | DIAGONALS: 20' (6.1 m) (LESS THAN 30 MPH (50 km/h))  |
| RAILROAD CROSSING   | 24 (600) TRANSVERSE LINES; "RR" IS 6' (1.8 m) LETTERS; 16 (400) LINE FOR "X" | SOLID                           | WHITE   | SEE STATE STANDARD 780001<br>AREA OF: "R"=3.6 SQ. FT. (0.33m <sup>2</sup> ) EACH<br>"X"=54.0 SQ. FT. (5.0 m <sup>2</sup> )   |

FOR FURTHER DETAILS ON PAVEMENT MARKING REFER TO STREET MARKING STANDARDS, PRINTED BY CITY OF CHICAGO, DEPARTMENT OF TRANSPORTATION, BUREAU OF TRAFFIC.

ALL DIMENSIONS ARE IN INCHES (MILLIMETERS) UNLESS OTHERWISE SHOWN.



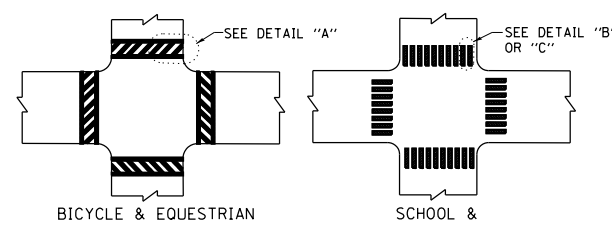
**MULTI-LANE UNDIVIDED**



**MULTI-LANE DIVIDED WITH MOUNTABLE MEDIAN**

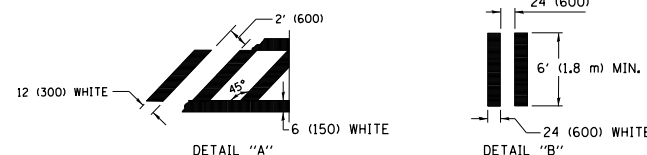
NOTE: MEDIANS WITH BARRIER CURB DO NOT REQUIRE AN EDGE LINE

**TYPICAL LANE AND EDGE LINE MARKING**

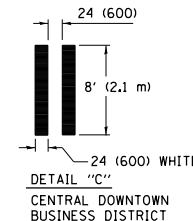


**BICYCLE & EQUESTRIAN**

**SCHOOL & PEDESTRIAN**



**TYPICAL CROSSWALK MARKING**



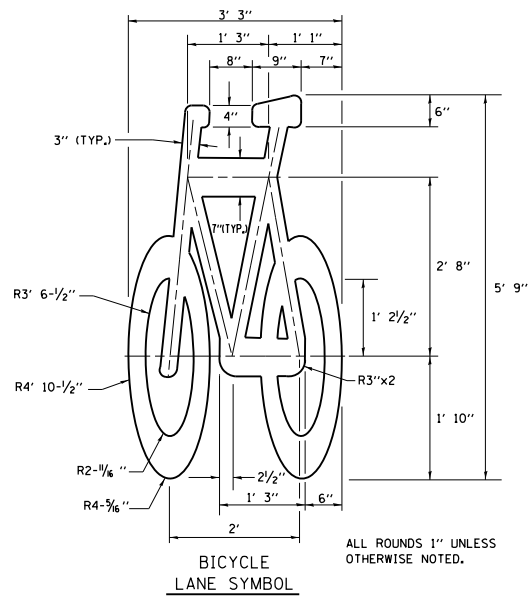
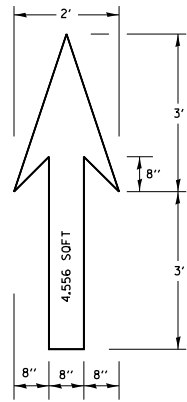
**DETAIL "B" CENTRAL DOWNTOWN BUSINESS DISTRICT**

|   |                              |            |                                 |
|---|------------------------------|------------|---------------------------------|
| FILE NAME =   | USER NAME = guillaumejp      | DESIGNED - | REVISED - T. RAMMACHER 12-07-00 |
| et:\pw\work\p\idot\guillaumejp\d0430033\CostStd.dgn |                              | DRAWN -    | REVISED - K. ENG 02-28-12       |
|   | PLOT SCALE = 100.0000' / in. | CHECKED -  | REVISED -                       |
|   | PLOT DATE = 3/31/2015        | DATE -     | REVISED -                       |

**STATE OF ILLINOIS DEPARTMENT OF TRANSPORTATION**

|                                  |                         |      |         |
|----------------------------------|-------------------------|------|---------|
| <b>CITY OF CHICAGO</b>           |                         |      |         |
| <b>TYPICAL PAVEMENT MARKINGS</b> |                         |      |         |
| SCALE: NONE                      | SHEET NO. 1 OF 3 SHEETS | STA. | TO STA. |

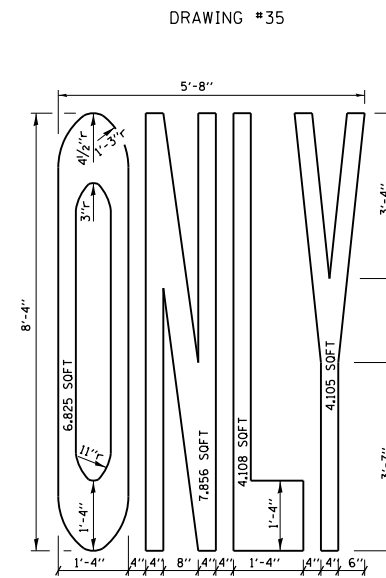
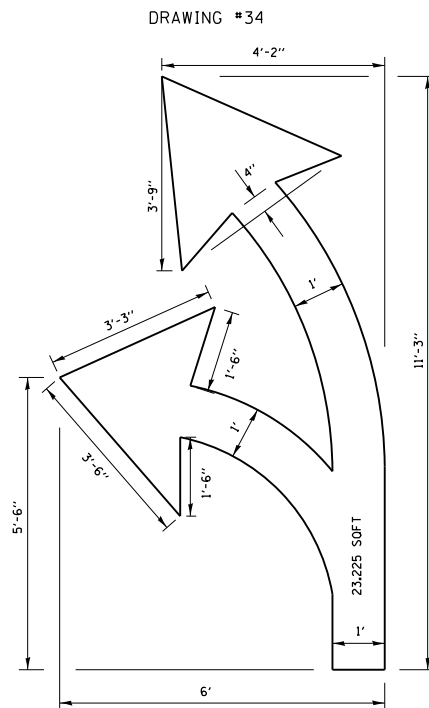
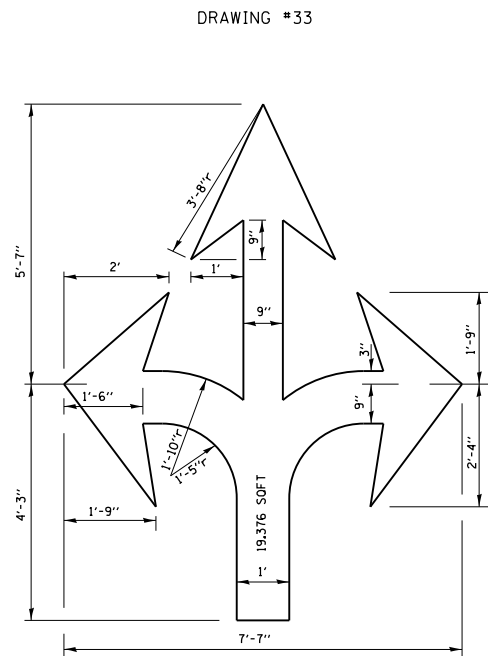
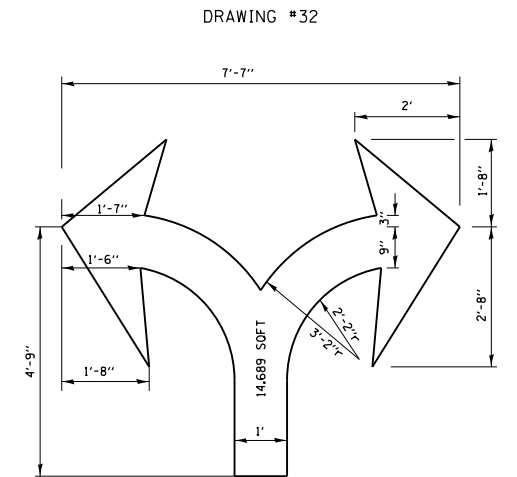
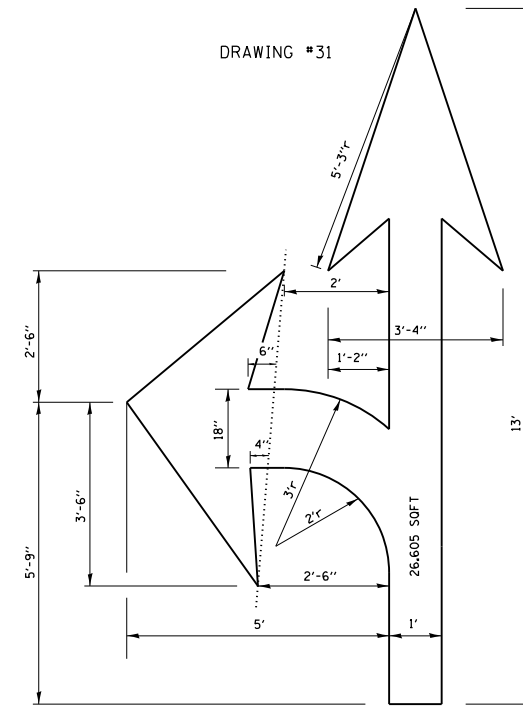
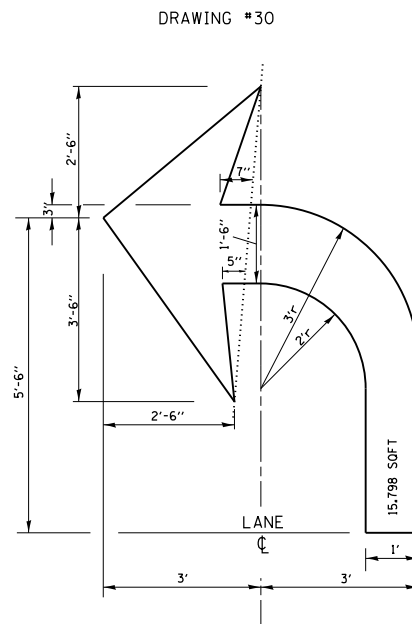
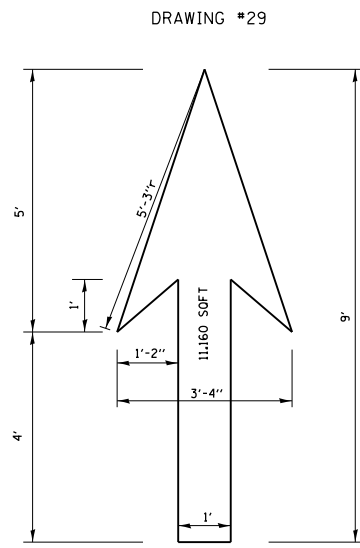
|   |          |                           |              |           |
|---|----------|---------------------------|--------------|-----------|
| F.A. RTE.                                       | SECTION  | COUNTY                    | TOTAL SHEETS | SHEET NO. |
| OR 22   | 1112RS-2 | COOK                      | 19           | 17        |
| <b>TC-24</b>                                    |          | <b>CONTRACT NO. 62A57</b> |              |           |
| FED. ROAD DIST. NO. 1 ILLINOIS FED. AID PROJECT |          |                           |              |           |



**NOTE:**

- 1.) FOR BIKE LANE SYMBOLS ONLY, USE PRE-FORMED THERMOPLASTIC WITH A MINIMUM THICKNESS OF 90 MILS, MINIMUM SKID RESISTANCE VALUE OF 60 BPN, & A MINIMUM INDEX OF REFRACTION OF 1.50.
- 2.) THE RESIDENT ENGINEER SHALL CONTACT MR. BEN GOMBERG AT 312-744-8093 AT LEAST ONE CALENDAR WEEK PRIOR TO INSTALLING BIKE LANE SYMBOLS.

**TYPICAL BIKE LANE SYMBOLS**  
DRAWING #28



**NOTE:**

ALL MARKINGS SHALL BE SOLID WHITE UNLESS OTHERWISE NOTED IN THE PLANS

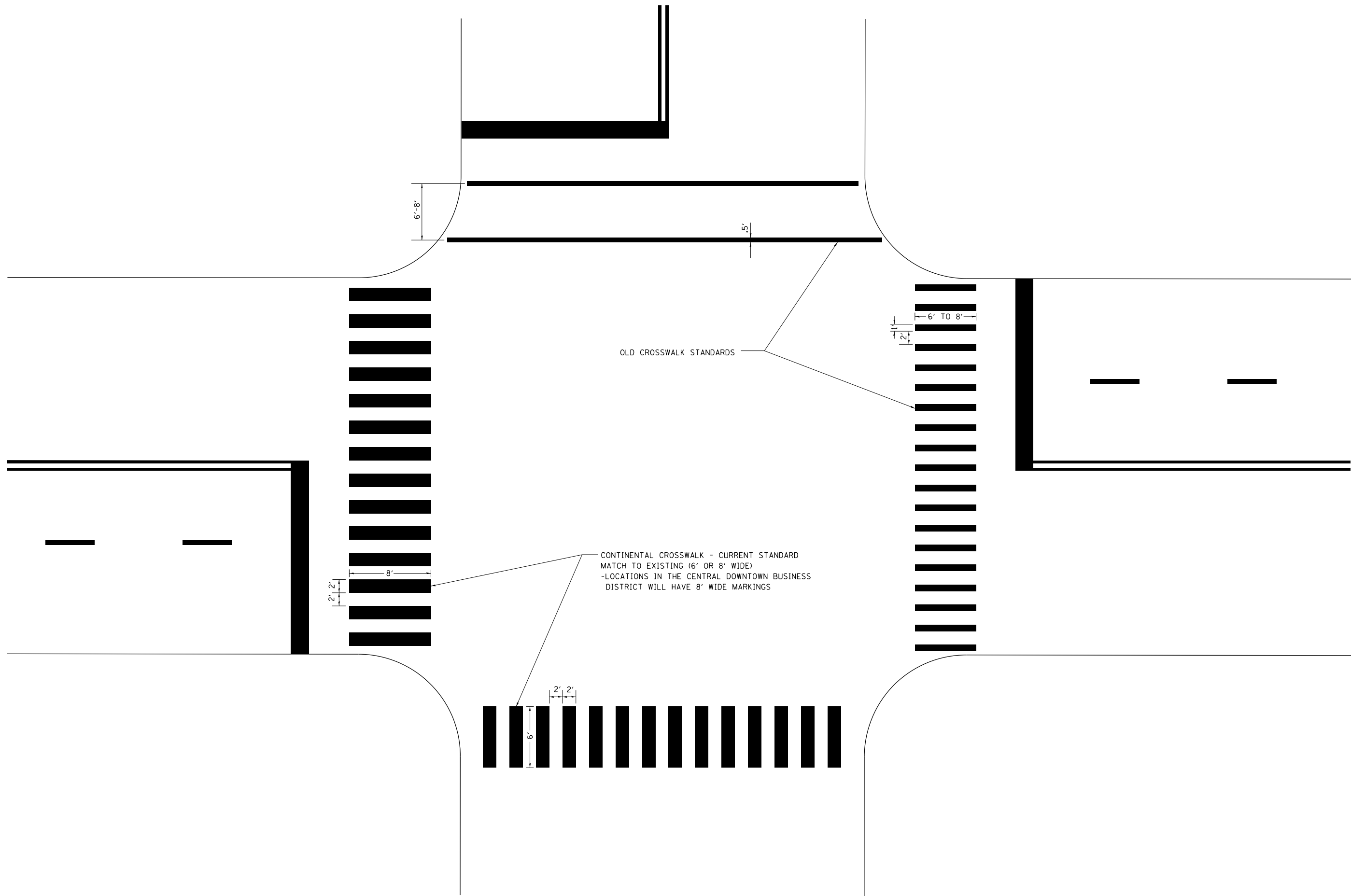
|   |                              |            |                                 |
|---|------------------------------|------------|---------------------------------|
| FILE NAME =                                       | USER NAME = guillaumejp      | DESIGNED - | REVISED - T. RAMMACHER 12-07-00 |
| et:\pw\work\p\dot\guillaumejp\d0430033\dotStd.dgn |                              | DRAWN -    | REVISED - K. ENG 01-12-12       |
|   | PLOT SCALE = 100.0000' / in. | CHECKED -  | REVISED -                       |
|   | PLOT DATE = 3/31/2015        | DATE -     | REVISED -                       |

**STATE OF ILLINOIS**  
**DEPARTMENT OF TRANSPORTATION**

**CITY OF CHICAGO**  
**TYPICAL PAVEMENT MARKINGS**

SCALE: NONE SHEET NO. 2 OF 3 SHEETS STA. TO STA.

|   |          |                           |              |           |
|---|----------|---------------------------|--------------|-----------|
| F.A. RTE.                                       | SECTION  | COUNTY                    | TOTAL SHEETS | SHEET NO. |
| OR 22   | 1112RS-2 | COOK                      | 19           | 18        |
| <b>TC-24</b>                                    |          | <b>CONTRACT NO. 62A57</b> |              |           |
| FED. ROAD DIST. NO. 1 ILLINOIS FED. AID PROJECT |          |                           |              |           |



|   |                              |            |                                 |
|---|------------------------------|------------|---------------------------------|
| FILE NAME =                                   | USER NAME = guillaumejp      | DESIGNED - | REVISED - T. RAMMACHER 12-07-00 |
| c:\pwork\pwork\guillaumejp\d0430033\01std.dgn |                              | DRAWN -    | REVISED - K. ENG 01-12-12       |
|   | PLOT SCALE = 100.0000' / in. | CHECKED -  | REVISED -                       |
|   | PLOT DATE = 3/31/2015        | DATE -     | REVISED -                       |

**STATE OF ILLINOIS  
DEPARTMENT OF TRANSPORTATION**

|                                  |                         |      |         |
|----------------------------------|-------------------------|------|---------|
| <b>CITY OF CHICAGO</b>           |                         |      |         |
| <b>TYPICAL PAVEMENT MARKINGS</b> |                         |      |         |
| SCALE: NONE                      | SHEET NO. 3 OF 3 SHEETS | STA. | TO STA. |

|   |          |                           |              |           |
|---|----------|---------------------------|--------------|-----------|
| F.A. RTE.                                       | SECTION  | COUNTY                    | TOTAL SHEETS | SHEET NO. |
| OR 22   | 1112RS-2 | COOK                      | 19           | 19        |
| <b>TC-24</b>                                    |          | <b>CONTRACT NO. 62457</b> |              |           |
| FED. ROAD DIST. NO. 1 ILLINOIS FED. AID PROJECT |          |                           |              |           |