

# PROPOSED HIGHWAY PLANS

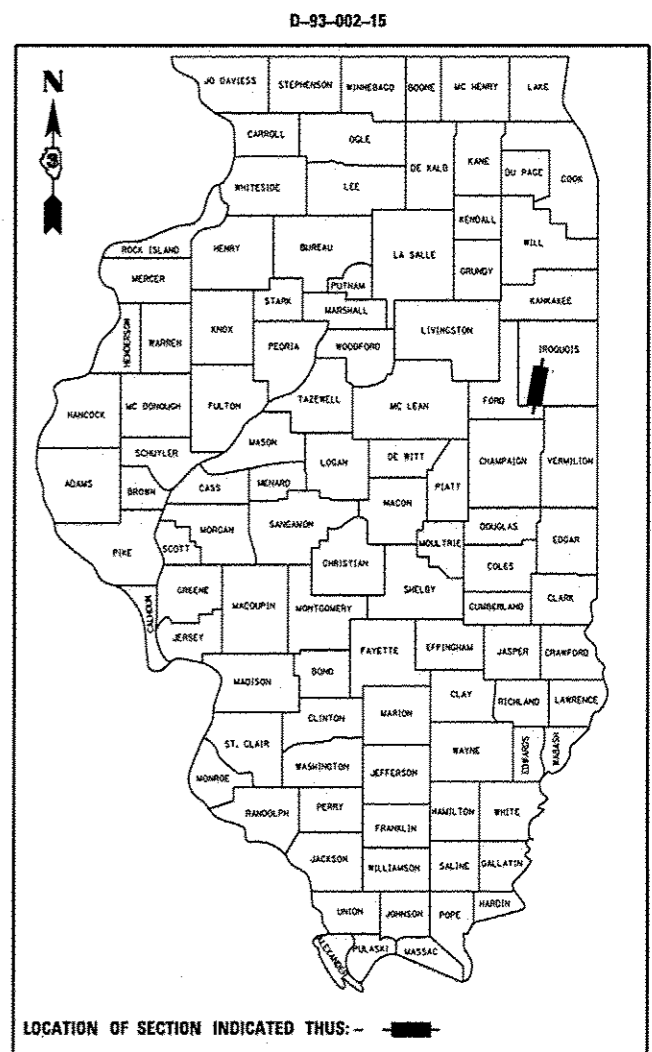
## FAI ROUTE 57 (I-57) SECTION D3 PATCHING 2016-2 CRC PAVEMENT PATCHING IROQUOIS COUNTY C-93-100-15

F.A.I. RTE.	SECTION	COUNTY	TOTAL SHEETS	SHEET NO.
57	D3 PATCHING 2016-2	IROQUOIS	14	1
		ILLINOIS		CONTRACT NO. 66E76

- 1 COVER SHEET
- 2 GENERAL NOTES
- 3-4 SUMMARY OF QUANTITIES
- 5 TYPICAL SECTION
- 6-9 SCHEDULES
- 10 TRAFFIC CONTROL AND PROTECTION, STANDARD 701400 (SPECIAL)
- 11 PAVEMENT MARKING DETAILS
- 12-14 CLASS A PATCHING DETAILS

### STANDARDS

- 000001-06 STANDARD SYMBOLS, ABBREVIATIONS AND PATTERNS
- 001001-02 AREAS OF REINFORCEMENT BARS
- 001006 DECIMAL OF AN INCH AND OF A FOOT
- 701101-04 OFF-ROAD OPERATIONS MULTILANE, 15' (4.5 m) TO 24" (600 mm) FROM PAVEMENT EDGE
- 701106-02 OFF-ROAD OPERATIONS, MULTILANE, MORE THAN 15' (4.5 m) AWAY
- 701401-09 LANE CLOSURE, FREEWAY/EXPRESSWAY
- 701411-09 LANE CLOSURE, MULTILANE, AT ENTRANCE OR EXIT RAMP FOR SPEEDS ≥ 45 MPH
- 701426-07 LANE CLOSURE, MULTILANE INTERMITTENT OR MOVING OPERATION, FOR SPEEDS ≥ 45 MPH
- 701428 TRAFFIC CONTROL SETUP AND REMOVAL FREEWAY/EXPRESSWAY
- 701901-04 TRAFFIC CONTROL DEVICES



RURAL	
INTERSTATE	
FAI 57 (I-57)	
2013	
ADT	14850
P.V.	62.75%
S.U.	5.92%
M.U.	31.33%

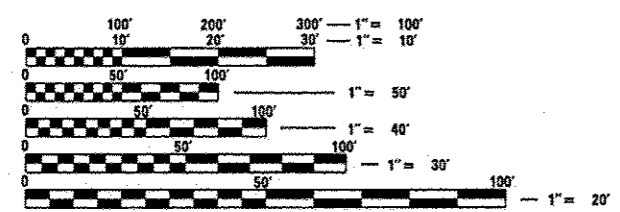
STATE OF ILLINOIS  
DEPARTMENT OF TRANSPORTATION  
DIVISION OF HIGHWAYS

SUBMITTED April 2 2015  
*Paul Laster*  
DEPUTY DIRECTOR OF HIGHWAYS, REGION ENGINEER

May 8 2015  
*John D. Baranzoni* P.E.  
ENGINEER OF DESIGN AND ENVIRONMENT

May 8 2015  
*Omber Coman* P.E.  
DIRECTOR OF HIGHWAYS, CHIEF ENGINEER

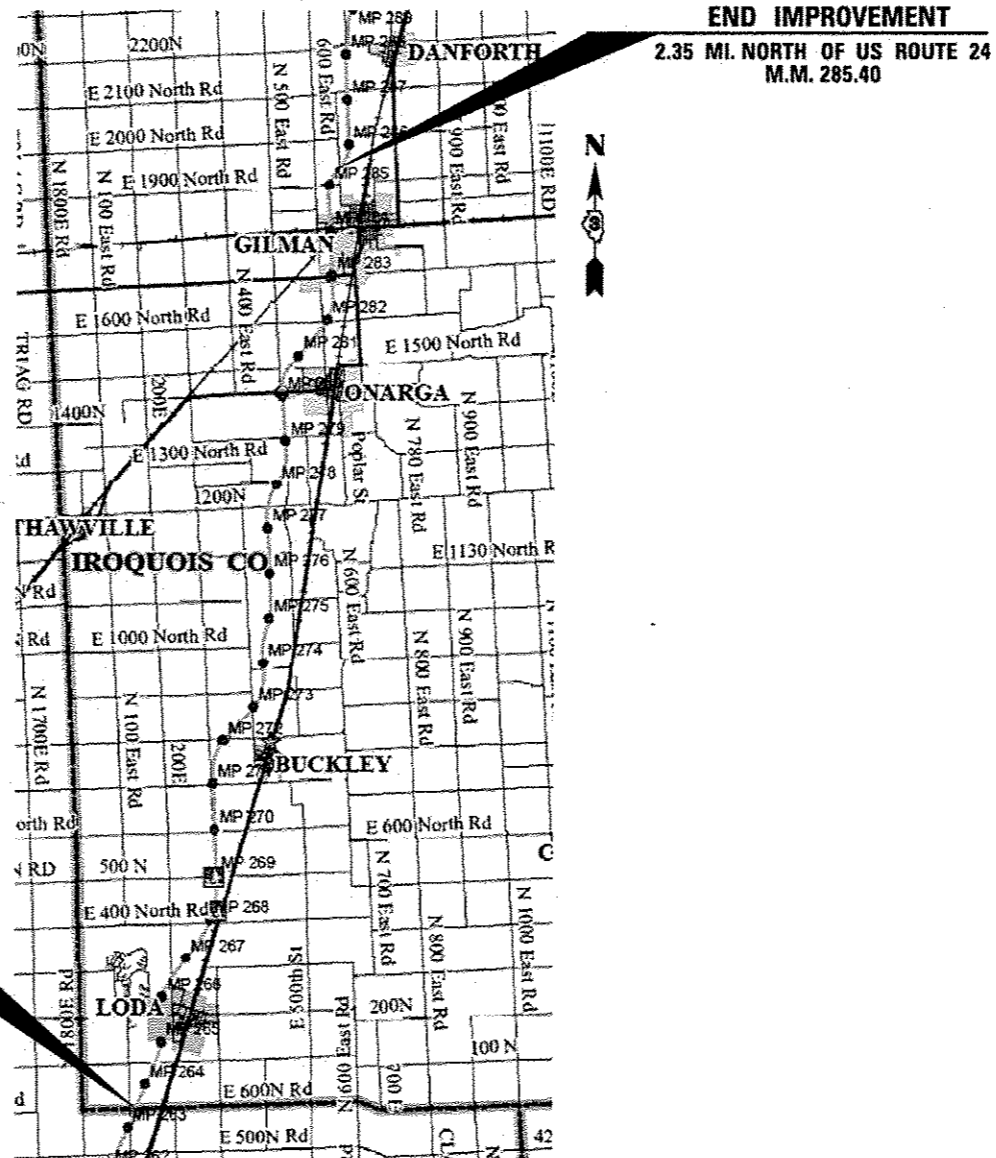
**PRINTED BY THE AUTHORITY  
OF THE STATE OF ILLINOIS**



FULL SIZE PLANS HAVE BEEN PREPARED USING STANDARD ENGINEERING SCALES. REDUCED SIZED PLANS WILL NOT CONFORM TO STANDARD SCALES. IN MAKING MEASUREMENTS ON REDUCED PLANS, THE ABOVE SCALES MAY BE USED.

J.U.L.I.E.  
JOINT UTILITY LOCATION INFORMATION FOR EXCAVATION  
1-800-892-0123  
OR 811

PROJECT ENGINEER: JOE KANNEL P.E.  
UNIT CHIEF: RON WOODSHANK  
TOWNSHIP: VARIOUS  
CONTRACT NO. 66E76



**BEGIN IMPROVEMENT**  
FORD COUNTY LINE  
M.M. 263.51

**END IMPROVEMENT**  
2.35 MI. NORTH OF US ROUTE 24  
M.M. 285.40

GROSS LENGTH = 115,579 FT. = 21.89 MILE  
NET LENGTH = 684 FT. = 0.129 MILE

GENERAL NOTES

PLAN DIMENSIONS AND DETAILS RELATIVE TO EXISTING PLANS ARE SUBJECT TO NOMINAL CONSTRUCTION VARIATIONS. THE CONTRACTOR SHALL FIELD VERIFY EXISTING DIMENSIONS AND DETAILS AFFECTING NEW CONSTRUCTION AND MAKE NECESSARY APPROVED ADJUSTMENTS PRIOR TO CONSTRUCTION OR ORDERING OF MATERIALS. SUCH VARIATIONS SHALL NOT BE CAUSE FOR ADDITIONAL COMPENSATION FOR A CHANGE IN SCOPE OF WORK; HOWEVER, THE CONTRACTOR WILL BE PAID FOR THE QUANTITY ACTUALLY FURNISHED AT THE UNIT PRICE BID FOR THE WORK.

ALL EXCAVATED MATERIAL, WHICH INCLUDES DIGGING OR GRADING OF ANY SOIL OR FILL MATERIAL, WITH THE EXCEPTION OF AGGREGATE FILLS, MUST BE INCORPORATED WITHIN THE IDOT RIGHT OF WAY DUE TO ENVIRONMENTAL DOCUMENTATION REQUIREMENTS.

FOR STABILIZATION, ALL TYPE III BARRICADES WILL REQUIRE A MINIMUM OF FOUR SAND BAGS PER BARRICADE.

ANY REFERENCE TO A STANDARD IN THESE PLANS SHALL BE INTERPRETED TO MEAN THE EDITION AS INDICATED BY THE SUBNUMBER SHOWN IN THE LIST OF STANDARDS OR THE COPY INCLUDED IN THESE PLANS.

THE CONTRACTOR SHALL CONTACT JULIE AT LEAST 48 HOURS PRIOR TO EXCAVATION TO DETERMINE WHICH UTILITIES ARE IN THE AREA.

ALL EXCAVATED MATERIAL, WHICH INCLUDES DIGGING OR GRADING OF ANY SOIL OR FILL MATERIAL, WITH THE EXCEPTION OF AGGREGATE FILLS, MUST BE INCORPORATED WITHIN THE IDOT RIGHT OF WAY DUE TO ENVIRONMENTAL DOCUMENTATION REQUIREMENTS.

COMMITMENTS

DATE: April 2, 2015

PREPARED BY: Don Beornil  
DISTRICT STUDIES & PLANS ENGINEER

EXAMINED BY: [Signature]  
DISTRICT CONSTRUCTION ENGINEER

[Signature]  
DISTRICT MATERIALS ENGINEER

[Signature]  
DISTRICT OPERATIONS ENGINEER

FILE NAME =	USER NAME = woodshenkrl	DESIGNED - RW	REVISED -	<b>STATE OF ILLINOIS DEPARTMENT OF TRANSPORTATION</b>	<b>GENERAL NOTES</b>	F.A.I. RTE.	SECTION	COUNTY	TOTAL SHEETS	SHEET NO.
a:\pwork\pwork\woodshenkrl\08429589\0366E76-sh1-detailed.dgn	DRAWN - RW	REVISED -	57			D3 PATCHING 2016-2	IRROUOIS	14	2	
PLOT SCALE = 100.0000' / 1"	CHECKED - TP	REVISED -	CONTRACT NO. 66E76							
PLOT DATE = 4/1/2015	DATE - 3/12/2015	REVISED -	ILLINOIS							
				SCALE: _____ SHEET NO. 1 OF 1 SHEETS STA. _____ TO STA. _____						

CODE NO.	ITEM	UNIT	TOTAL QUANTITY	CONSTR. CODE
				CONT. MAINT.
				100% STATE
				ROADWAY
				0005
				RURAL
44200610	CLASS A PATCHES, TYPE II, 13 INCH	SQ YD	848	848
44213000	PATCHING REINFORCEMENT	SQ YD	848	848
44213100	PAVEMENT FABRIC	SQ YD	848	848
44213200	SAW CUTS	FOOT	3816	3816
44213204	TIE BARS 3/4"	EACH	2544	2544
67100100	MOBILIZATION	L SUM	1	1
70100420	TRAFFIC CONTROL AND PROTECTION, STANDARD 701411	EACH	14	14
70103815	TRAFFIC CONTROL SURVEILLANCE	CAL DA	12	12
• 78009004	MODIFIED URETHANE PAVEMENT MARKING - LINE 4"	FOOT	636	636
• 78009006	MODIFIED URETHANE PAVEMENT MARKING - LINE 6"	FOOT	1050	1050
X0326880	MESSAGE BOARD VEHICLE DRIVER	HOUR	144	144
X0326907	PORTABLE, VEHICLE MOUNTED, CHANGEABLE MESSAGE SIGN	CAL MO	1	1
X7010410	SPEED DISPLAY TRAILER	CAL MO	1	1
X7010805	TRAFFIC CONTROL AND PROTECTION, STANDARD 701401 (SPECIAL)	L SUM	1	1

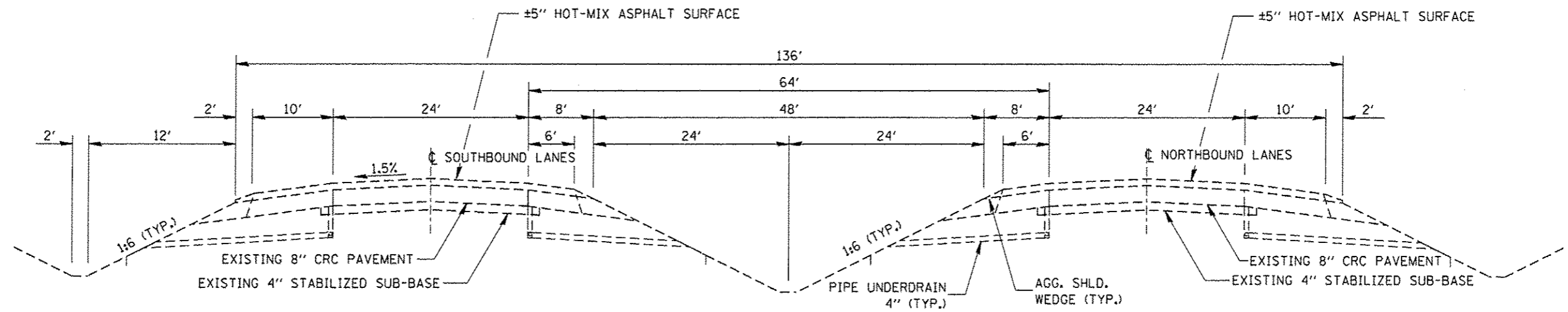
•SPECIALITY ITEMS

FILE NAME *	USER NAME = woodshenk1	DESIGNED - RW	REVISED -	<b>STATE OF ILLINOIS DEPARTMENT OF TRANSPORTATION</b>	<b>SUMMARY OF QUANTITIES</b>	F.A.I. RTE.	SECTION	COUNTY	TOTAL SHEETS	SHEET NO.
c:\pwwork\pwwork\woodshenk1\0429509\0366276-sht-details.dgn	DRAWN - RW	REVISED -	57			D3 PATCHING 2016-2	IROQUOIS	14	3	
PLOT SCALE * 100.0000' / 1"	CHECKED - TP	REVISED -	SCALE: _____ SHEET NO. 1 OF 1 SHEETS STA. _____ TO STA. _____			CONTRACT NO. 66E76		ILLINOIS		
PLOT DATE * 4/1/2015	DATE - 3/12/2015	REVISED -								

CODE NO.	ITEM	UNIT	TOTAL QUANTITY	CONSTR. CODE
				CONT. MAINT. 100% STATE ROADWAY 0005 RURAL
Z0030850	TEMPORARY INFORMATION SIGNING	SQ FT	84	84

•SPECIALITY ITEMS

FILE NAME =	USER NAME = woodshenkr1	DESIGNED - RW	REVISED -	<b>STATE OF ILLINOIS DEPARTMENT OF TRANSPORTATION</b>	<b>SUMMARY OF QUANTITIES</b>	F.A.I. RTE.	SECTION	COUNTY	TOTAL SHEETS	SHEET NO.
ci:\pe_work\pvidot\woodshenkr1\0429509\036676-shr-details.dgn	DRAWN - RW	REVISED -	57			D3 PATCHING 2016-2	IROQUOIS	14	4	
PLOT SCALE = 100,0000' / in.	CHECKED - TP	REVISED -	CONTRACT NO. 66E76							
PLOT DATE = 4/1/2015	DATE - 3/12/2015	REVISED -	ILLINOIS							
				SCALE: _____ SHEET NO. 1 OF 1 SHEETS STA. _____ TO STA. _____						



**TYPICAL SECTION**

FILE NAME *	USER NAME * woodshenkrj	DESIGNED - RW	REVISED -	<b>STATE OF ILLINOIS DEPARTMENT OF TRANSPORTATION</b>	<b>TYPICAL SECTIONS</b>	F.A.I. RTE.	SECTION	COUNTY	TOTAL SHEETS	SHEET NO.
c:\pwwork\pwwork\woodshenkrj\d0429509\0366E76-shr-detail.dgn	DRAWN - RW	REVISED -	57			D3 PATCHING 2016-2	IROQUOIS	14	5	
PLOT SCALE * 100.0000' / 1"	CHECKED - TP	REVISED -	CONTRACT NO. 66E76							
PLOT DATE * 4/1/2015	DATE - 3/12/2015	REVISED -	ILLINOIS							
SCALE: _____					SHEET NO. 1 OF 1 SHEETS		STA. _____ TO STA. _____			

PATCHING SCHEDULE

LOCATION BY MILE POST	PASS LANE	DRIVING LANE	PASSING LANE					DRIVING LANE					
			CLASS A TYPE II	PAV'T FABRIC	PATCH REINF.	SAW CUT	TIE BARS	CLASS A TYPE II	PAV'T FABRIC	PATCH REINF.	SAW CUT	TIE BARS	
			SQ YD	SQ YD	SQ YD	FOOT	EACH	SQ YD	SQ YD	SQ YD	FOOT	EACH	
NORTHBOUND LANES													
265.00		6							8	8	8	36	24
265.50		6							8	8	8	36	24
266.00		6							8	8	8	36	24
267.00		6							8	8	8	36	24
268.50	6		8	8	8	36	24						
268.50		6							8	8	8	36	24
269.00		6							8	8	8	36	24
270.00	6		8	8	8	36	24						
270.50		6							8	8	8	36	24
276.00		6							8	8	8	36	24
276.50		6							8	8	8	36	24
277.00		6							8	8	8	36	24
277.50		6							8	8	8	36	24
278.00		6							8	8	8	36	24
278.50		6							8	8	8	36	24
279.00		6							8	8	8	36	24
279.50		6							8	8	8	36	24
280.00		6							8	8	8	36	24
280.50		6							8	8	8	36	24
281.00		6							8	8	8	36	24
281.40	6	6	8	8	8	36	24		8	8	8	36	24
281.80		6							8	8	8	36	24
282.20	6		8	8	8	36	24						
282.60		6							8	8	8	36	24
283.00	6		8	8	8	36	24						
283.40		6							8	8	8	36	24
283.80	6		8	8	8	36	24						
284.20		6							8	8	8	36	24
284.60	6		8	8	8	36	24						
285.00		6							8	8	8	36	24
285.40	6		8	8	8	36	24						
NB TOTALS			64	64	64	288	192		192	192	192	864	576

PATCHING SCHEDULE

LOCATION BY MILE POST	PASS LANE	DRIVING LANE	PASSING LANE					DRIVING LANE				
			CLASS A TYPE II	PAV'T FABRIC	PATCH REINF.	SAW CUT	TIE BARS	CLASS A TYPE II	PAV'T FABRIC	PATCH REINF.	SAW CUT	TIE BARS
			SQ YD	SQ YD	SQ YD	FOOT	EACH	SQ YD	SQ YD	SQ YD	FOOT	EACH
SOUTHBOUND LANES												
285.40		6						8	8	8	36	24
285.10		6						8	8	8	36	24
284.80		6						8	8	8	36	24
284.50		6						8	8	8	36	24
284.20	6		8	8	8	36	24					
283.90		6						8	8	8	36	24
283.60		6						8	8	8	36	24
283.30		6						8	8	8	36	24
283.00		6						8	8	8	36	24
282.70		6						8	8	8	36	24
282.40	6		8	8	8	36	24					
282.10		6						8	8	8	36	24
281.80		6						8	8	8	36	24
281.50		6						8	8	8	36	24
281.20		6						8	8	8	36	24
280.90	6		8	8	8	36	24					
280.60		6						8	8	8	36	24
280.30		6						8	8	8	36	24
280.00		6						8	8	8	36	24
279.70		6						8	8	8	36	24
279.40		6						8	8	8	36	24
279.10	6		8	8	8	36	24					
278.80		6						8	8	8	36	24
278.50		6						8	8	8	36	24
278.20		6						8	8	8	36	24
277.90		6						8	8	8	36	24
277.60	6		8	8	8	36	24					
277.30		6						8	8	8	36	24
277.00		6						8	8	8	36	24
276.70		6						8	8	8	36	24
276.40		6						8	8	8	36	24
276.10		6						8	8	8	36	24
275.80	6		8	8	8	36	24					
275.50		6						8	8	8	36	24
275.20		6						8	8	8	36	24
274.90		6						8	8	8	36	24
274.60		6						8	8	8	36	24
274.30	6		8	8	8	36	24					
274.00		6						8	8	8	36	24
273.70		6						8	8	8	36	24
273.40		6						8	8	8	36	24
273.10		6						8	8	8	36	24
272.80		6						8	8	8	36	24
272.50	6		8	8	8	36	24					
272.20		6						8	8	8	36	24
271.90		6						8	8	8	36	24
271.60		6						8	8	8	36	24
271.30		6						8	8	8	36	24
PG 1 SUBTOTALS			64	64	64	288	192	320	320	320	1440	960

PATCHING SCHEDULE

LOCATION BY MILE POST	PASS LANE	DRIVING LANE	PASSING LANE					DRIVING LANE				
			CLASS A TYPE II	PAV'T FABRIC	PATCH REINF.	SAW CUT	TIE BARS	CLASS A TYPE II	PAV'T FABRIC	PATCH REINF.	SAW CUT	TIE BARS
			SQ YD	SQ YD	SQ YD	FOOT	EACH	SQ YD	SQ YD	SQ YD	FOOT	EACH
SOUTHBOUND LANES												
271.00	6		8	8	8	36	24					
270.70		6						8	8	8	36	24
270.40		6						8	8	8	36	24
270.10		6						8	8	8	36	24
269.80		6						8	8	8	36	24
269.50		6						8	8	8	36	24
269.20	6		8	8	8	36	24					
268.90		6						8	8	8	36	24
268.60		6						8	8	8	36	24
268.30		6						8	8	8	36	24
268.00		6						8	8	8	36	24
267.70	6		8	8	8	36	24					
267.40		6						8	8	8	36	24
267.10		6						8	8	8	36	24
266.80		6						8	8	8	36	24
266.50		6						8	8	8	36	24
266.20		6						8	8	8	36	24
265.90	6		8	8	8	36	24					
265.60		6						8	8	8	36	24
265.30		6						8	8	8	36	24
265.00		6						8	8	8	36	24
264.70		6						8	8	8	36	24
264.40	6		8	8	8	36	24					
264.10	6		8	8	8	36	24					
263.80	6		8	8	8	36	24					
263.50	6		8	8	8	36	24					
PG 2 SUBTOTALS			64	64	64	288	192	144	144	144	648	432
SB TOTALS			128	128	128	576	384	464	464	464	2088	1392



SCHEDULE

LOCATION  NORTHBOUND MILE POST	MODIFIED URETHANE PAVEMENT MARKING LINE 4"		MODIFIED URETHANE PAVEMENT MARKING LINE 6"
	FEET		FEET
	YELLOW	WHITE	WHITE
265.00		6	10
265.50		6	10
266.00		6	10
267.00		6	10
268.50	6		10
268.50		6	10
269.00		6	10
270.00	6		10
270.50		6	10
276.00		6	10
276.50		6	10
277.00		6	10
277.50		6	10
278.00		6	10
278.50		6	10
279.00		6	10
279.50		6	10
280.00		6	10
280.50		6	10
281.00		6	10
281.40	6	6	10
281.80		6	10
282.20	6		10
282.60		6	10
283.00	6		10
283.40		6	10
283.80	6		10
284.20		6	10
284.60	6		10
285.00		6	10
285.40	6		10
SUBTOTAL	48	144	
NB TOTALS	192		310

SCHEDULE

LOCATION  SOUTHBOUND MILE POST	MODIFIED URETHANE PAVEMENT MARKING LINE 4"		MODIFIED URETHANE PAVEMENT MARKING LINE 6"
	FEET		FEET
	YELLOW	WHITE	WHITE
285.40		6	10
285.10		6	10
284.80		6	10
284.50		6	10
284.20	6		10
283.90		6	10
283.60		6	10
283.30		6	10
283.00		6	10
282.70		6	10
282.40	6		10
282.10		6	10
281.80		6	10
281.50		6	10
281.20		6	10
280.90	6		10
280.60		6	10
280.30		6	10
280.00		6	10
279.70		6	10
279.40		6	10
279.10	6		10
278.80		6	10
278.50		6	10
278.20		6	10
277.90		6	10
277.60	6		10
277.30		6	10
277.00		6	10
276.70		6	10
276.40		6	10
276.10		6	10
275.80	6		10
275.50		6	10
275.20		6	10
274.90		6	10
274.60		6	10
274.30	6		10
274.00		6	10
273.70		6	10
273.40		6	10
273.10		6	10
272.80		6	10
272.50	6		10
272.20		6	10
271.90		6	10
271.60		6	10
271.30		6	10
SUBTOTAL	48	240	480

SCHEDULE

LOCATION  SOUTHBOUND MILE POST	MODIFIED URETHANE PAVEMENT MARKING LINE 4"		MODIFIED URETHANE PAVEMENT MARKING LINE 6"
	FEET		FEET
	YELLOW	WHITE	WHITE
271.00	6		10
270.70		6	10
270.40		6	10
270.10		6	10
269.80		6	10
269.50		6	10
269.20	6		10
268.90		6	10
268.60		6	10
268.30		6	10
268.00		6	10
267.70	6		10
267.40		6	10
267.10		6	10
266.80		6	10
266.50		6	10
266.20		6	10
265.90	6		10
265.60		6	10
265.30		6	10
265.00		6	10
264.70		6	10
264.40	6		10
264.10	6		10
263.80	6		10
263.50	6		10
SUBTOTAL	48	108	260
SB TOTALS	444		740

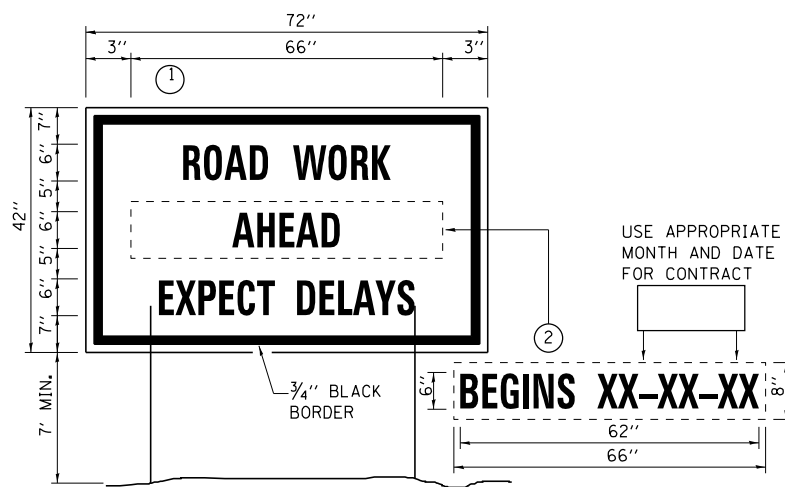
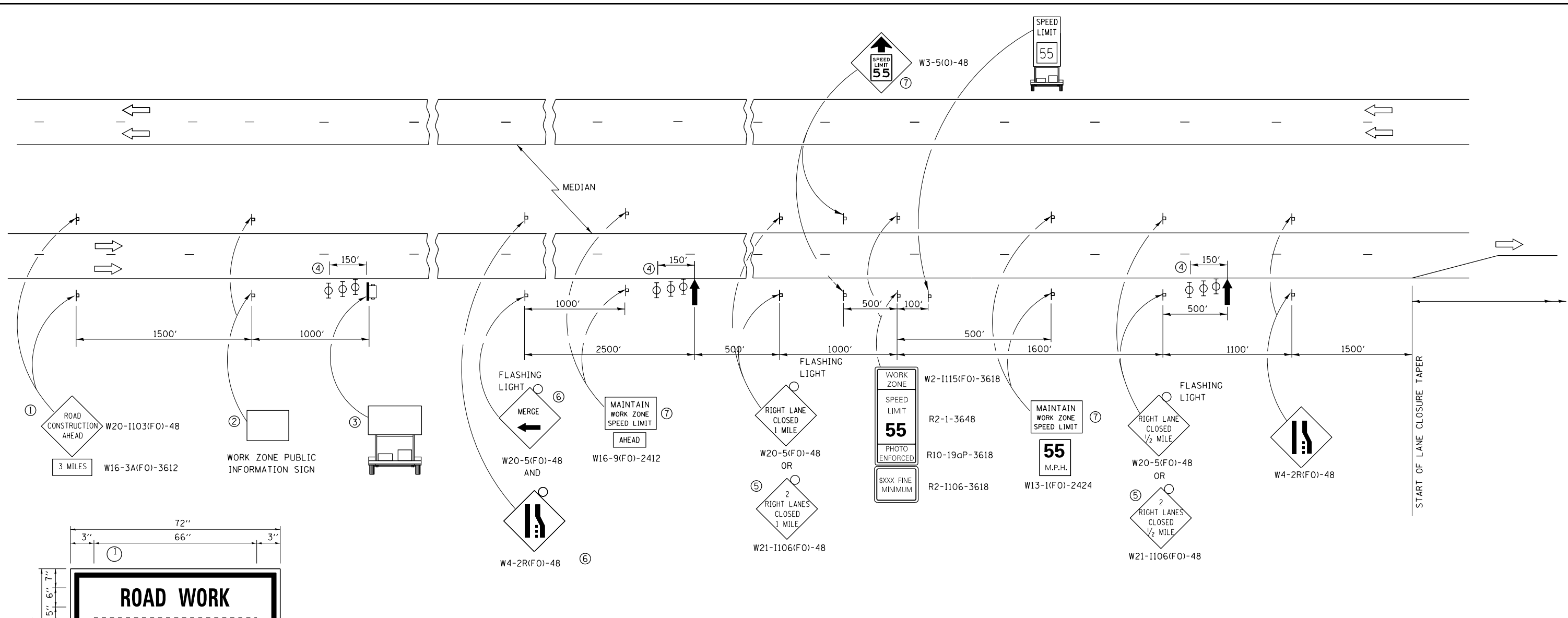
FILE NAME =	USER NAME = woodshankr1	DESIGNED - RW	REVISED -
c:\pwork\pwork\woodshankr1\d0429589\0366E76-shit-details.dgn		DRAWN - RW	REVISED -
	PLOT SCALE = 100.0000' / 1in.	CHECKED - TP	REVISED -
	PLOT DATE = 4/1/2015	DATE - 3/12/2015	REVISED -

STATE OF ILLINOIS  
DEPARTMENT OF TRANSPORTATION

SCHEDULES

SCALE: \_\_\_\_\_ SHEET NO. 1 OF 1 SHEETS STA. \_\_\_\_\_ TO STA. \_\_\_\_\_

F.A.I. RTE.	SECTION	COUNTY	TOTAL SHEETS	SHEET NO.
57	D3 PATCHING 2016-2	IROQUOIS	14	9
			CONTRACT NO. 66E76	
ILLINOIS				

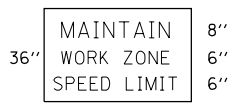


**TEMPORARY INFORMATION SIGNING**

- NOTES:**
- USE 6" D BLACK LETTERING ON FLOURESENT ORANGE BACKGROUND.
  - ERECT SIGNS AT LOCATIONS IN ADVANCE OF THE "ROAD CONSTRUCTION AHEAD" SIGNS ON EACH SIDE OF THE ROADWAY AS DIRECTED BY THE ENGINEER.
  - ERECT SIGN ① WITH INSTALLED PANEL ② A MINIMUM OF ONE WEEK PRIOR TO THE START OF THE LANE CLOSURE.
  - REMOVE PANEL ② ON THAT DATE.
  - SEE SPECIAL PROVISION "TEMPORARY INFORMATION SIGNING" FOR ADDITIONAL INFORMATION.
  - WILL BE PAID FOR PER SQ FT AS "TEMPORARY INFORMATION SIGNING". EACH SQ FT = 21 SQ FT AND THE DATE PANEL ② WILL NOT BE MEASURED SEPARATELY FOR PAYMENT.

- THE ROAD CONSTRUCTION AHEAD SIGN SHALL BE LOCATED 3 MILES IN ADVANCE OF THE PROJECT LIMITS.
- THE MESSAGE AND SIZE OF THE WORK ZONE PUBLIC INFORMATION SIGN SHALL BE AS SPECIFIED BY THE DEPARTMENT.
- TO BE PLACED IN THE MEDIAN WHEN FEASIBLE. THE MESSAGE BOARD SHALL BE USED TO DISPLAY STATUS OF LANES WITHIN THE PROJECT. THE PRIMARY MESSAGES SHALL BE:  
"RIGHT LANE CLOSED" / " x MILES AHEAD"  
"LEFT LANE CLOSED" / " x MILES AHEAD"  
"ALL LANES OPEN"
- THREE, TYPE II BARRICADES, DRUMS, OR VERTICAL BARRICADES AT 50' CENTERS.
- THIS SIGN SHALL BE USED WHEN 2 LANES ARE CLOSED.
- WHEN THE LEFT LANE IS CLOSED, SWITCH THESE TWO SIGNS AND THE DIRECTION OF THE MERGE ARROW.
- THIS SIGN SHALL ONLY BE USED IF THE EXISTING SPEED LIMIT IS GREATER THAN 65 MPH.

⑦ 48"x36" FLUORESCENT ORANGE SIGN WITH BLACK LETTERS.



- ARROW BOARD
- PORTABLE CHANGEABLE MESSAGE SIGN
- SIGN
- TYPE II BARRICADE, DRUM, OR VERTICAL BARRICADE WITH MONODIRECTIONAL FLASHING LIGHT
- LANE DROP ARROW - SEE STANDARD 780001
- TEMPORARY RUMBLE STRIPS
- SPEED DISPLAY TRAILER

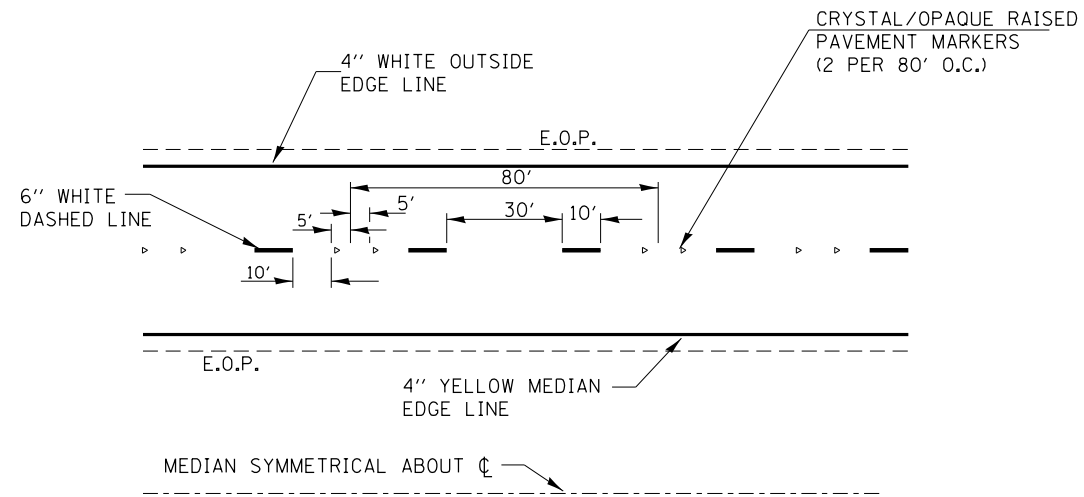
**GENERAL NOTE:**

THIS STANDARD IS USED WHERE AT ANY TIME A LANE IS CLOSED ON A FREEWAY/EXPRESSWAY.

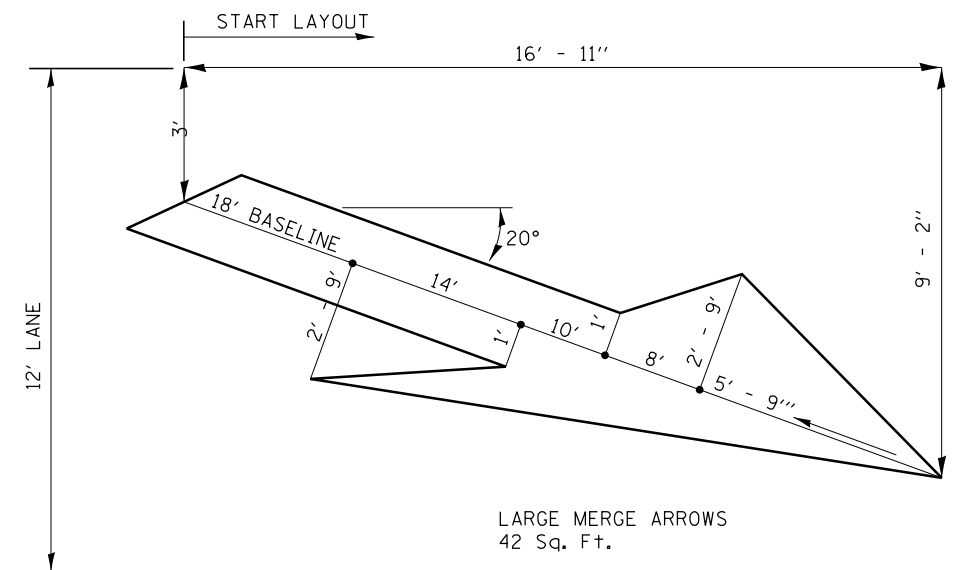
WHEN THE LEFT LANE IS CLOSED, LEFT LANE CLOSED SIGNS SHALL BE SUBSTITUTED FOR THE RIGHT LANE CLOSED SIGNS.

THE FIRST TWO SIGNS AND THE MESSAGE BOARD ARE STATIONARY. THE OTHER SIGNS AND ARROWBOARDS SHALL BE MOVED AS NECESSARY TO MAINTAIN THE REQUIRED DISTANCE FROM THE START OF THE LANE CLOSURE TAPER(S).

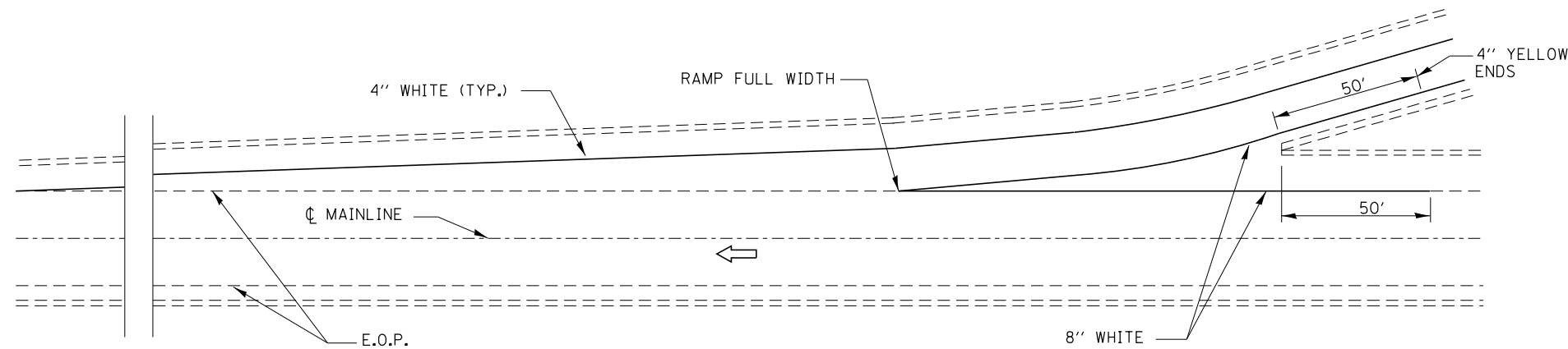
SEE SPECIAL PROVISIONS.



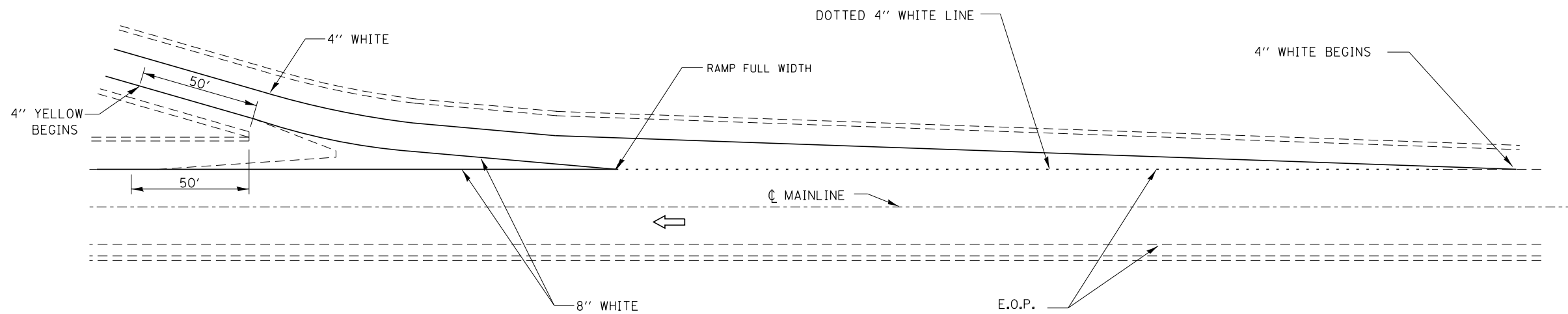
**TYPICAL PAVEMENT MARKINGS**



**LANE DROP ARROW**



**TYPICAL PAVEMENT MARKING FOR ENTRANCE RAMP TERMINALS**



**TYPICAL PAVEMENT MARKINGS FOR EXIT RAMP TERMINALS**

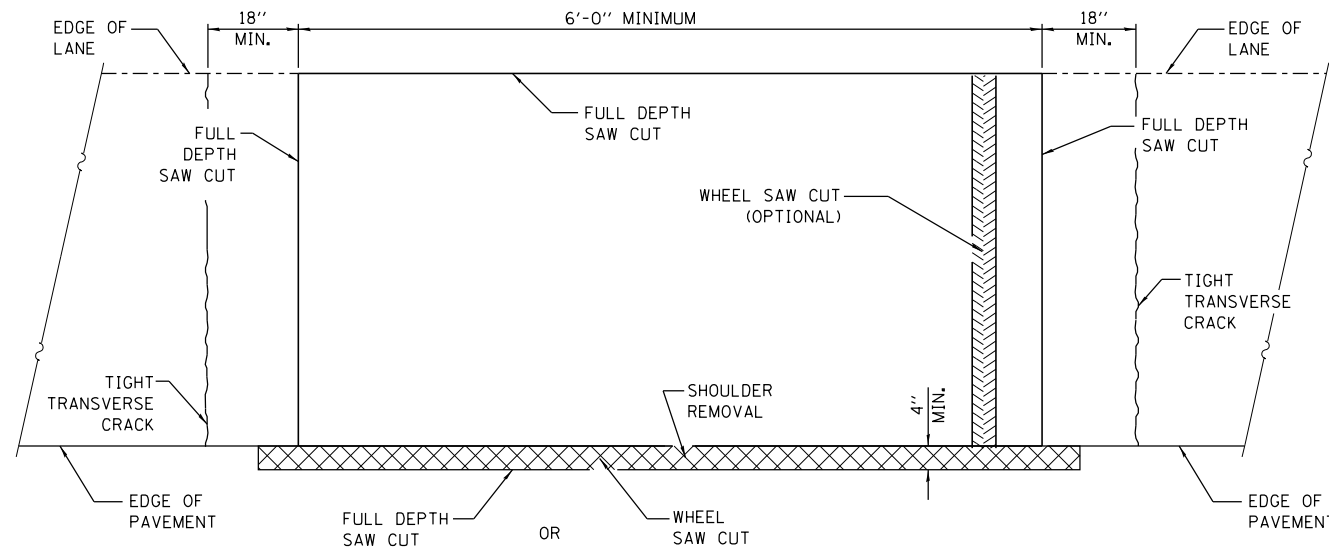
FILE NAME =	USER NAME = woodshankr1	DESIGNED - RW	REVISED -
c:\pwork\pwork\woodshankr1\d0429589\0366E76-shr-detail.dgn		DRAWN - RW	REVISED -
	PLOT SCALE = 100.0000' / 1in.	CHECKED - EP	REVISED -
\$MODELNAME\$	PLOT DATE = 4/1/2015	DATE - 3/12/2015	REVISED -

STATE OF ILLINOIS  
DEPARTMENT OF TRANSPORTATION

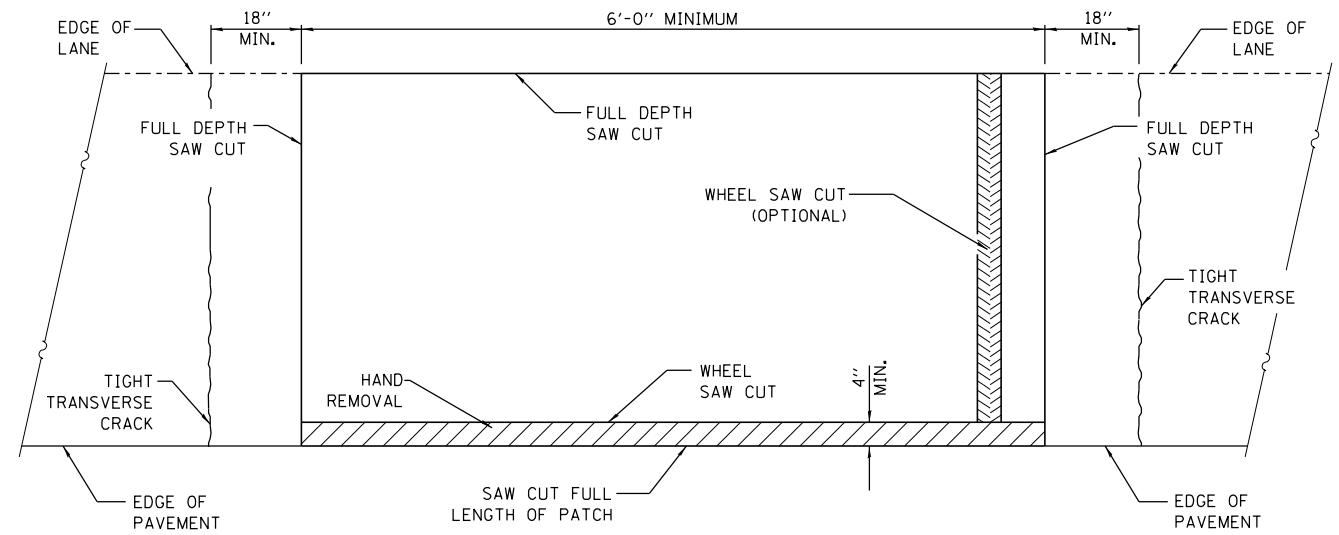
**PAVEMENT MARKING**

SCALE: \_\_\_\_\_ SHEET 1 OF 1 SHEETS STA. \_\_\_\_\_ TO STA. \_\_\_\_\_

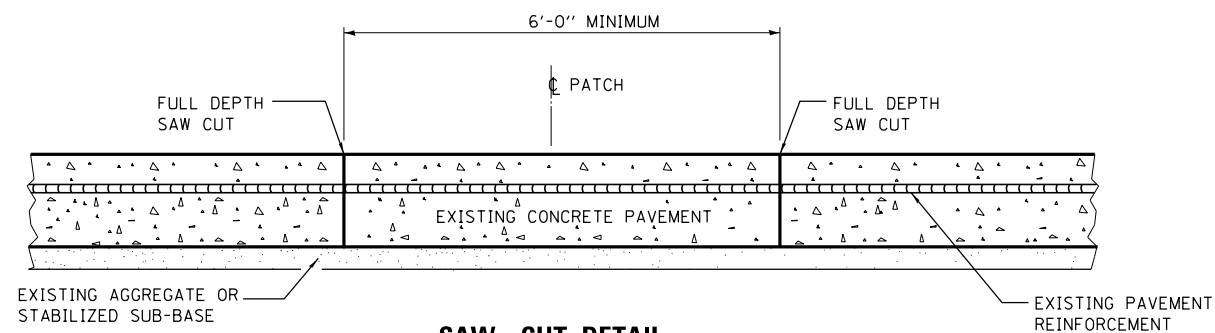
F.A.I. RTE.	SECTION	COUNTY	TOTAL SHEETS	SHEET NO.
57	D3 PATCHING 2016-2	IROQUOIS	14	11
			CONTRACT NO. 66E76	
ILLINOIS				



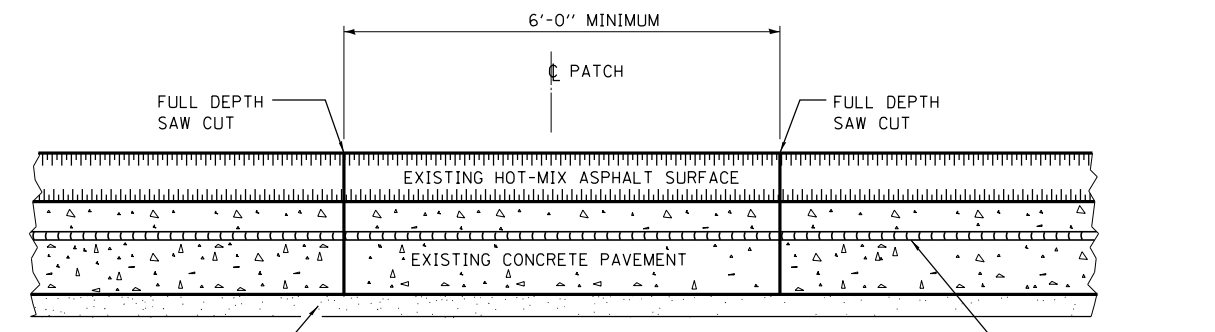
**PAVEMENT SAWING DETAIL**  
(HMA SHOULDER)



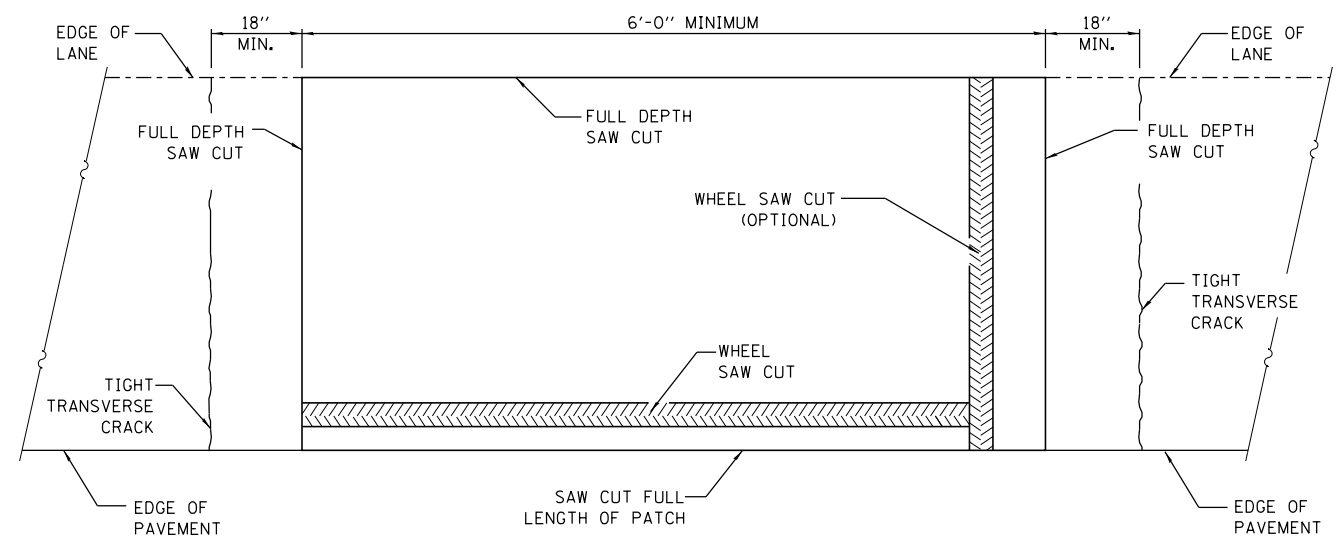
**PAVEMENT SAWING DETAIL**  
(PCC SHOULDER)



**SAW CUT DETAIL**  
WITHOUT HMA SURFACE



**SAW CUT DETAIL**  
WITH HMA SURFACE



**ALTERNATE SAWING DETAIL**  
(PCC SHOULDER)

**GENERAL NOTES**

WHEN PATCHING TWO ADJACENT LANES IN ONE OPERATION THE LONGITUDINAL JOINT SHALL BE LONGITUDINAL SAWED JOINT AS DETAILED ON STANDARD 420001, HOWEVER, THE GROOVE MAYBE EITHER PREFORMED OR SAWED.

SEE STANDARD 421001 FOR DETAILS OF PAVEMENT REINFORCEMENT.

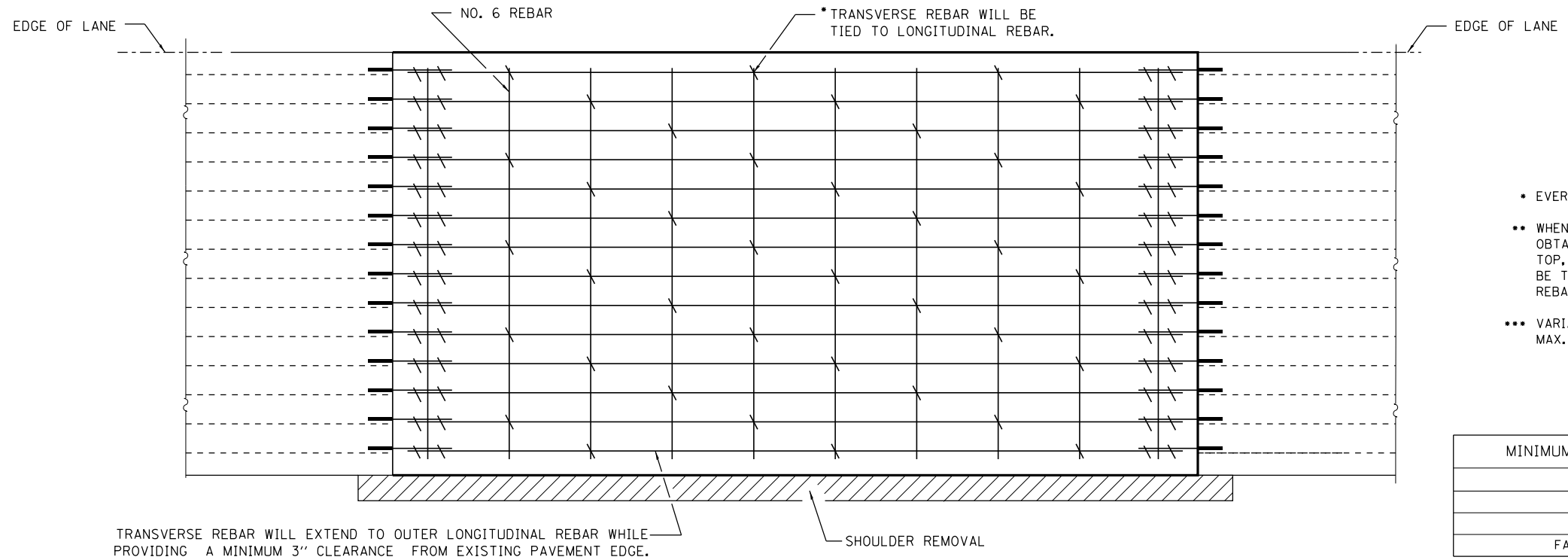
FILE NAME =	USER NAME = woodshankr1	DESIGNED - RW	REVISED -
et:\pw\work\p1\dot\woodshankr1\d0429589\0366E76-sh1-detail.dgn		DRAWN - RW	REVISED -
	PLOT SCALE = 100.0000' / 1in.	CHECKED - EP	REVISED -
\$MODELNAME\$	PLOT DATE = 4/1/2015	DATE - 3/12/2015	REVISED -

**STATE OF ILLINOIS**  
**DEPARTMENT OF TRANSPORTATION**

**CLASS A PATCHES**

SCALE: \_\_\_\_\_ SHEET 1 OF 3 SHEETS STA. \_\_\_\_\_ TO STA. \_\_\_\_\_

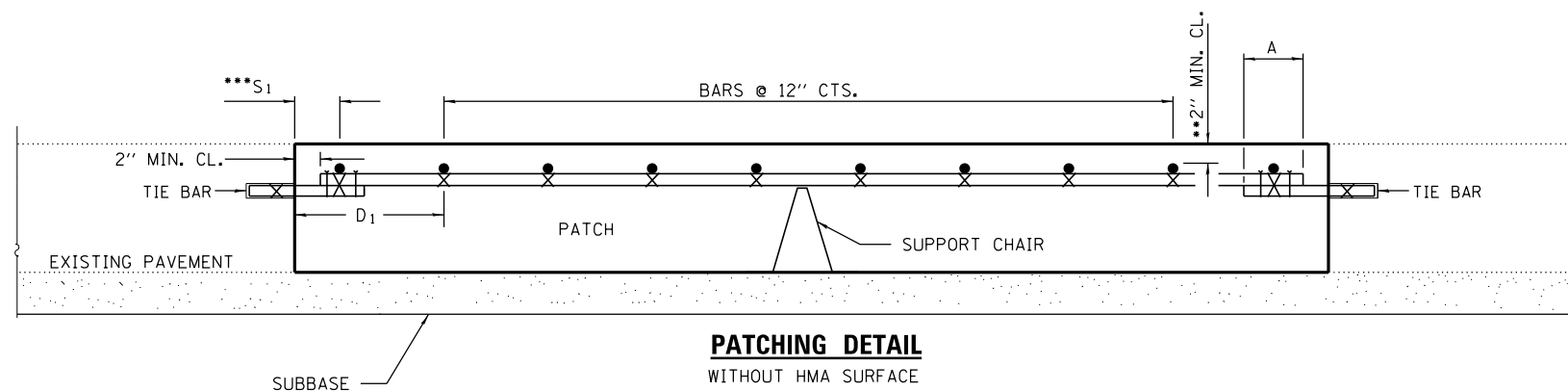
F.A.I. RTE.	SECTION	COUNTY	TOTAL SHEETS	SHEET NO.
57	D3 PATCHING 2016-2	IROQUOIS	14	12
			CONTRACT NO. 66E76	
ILLINOIS				



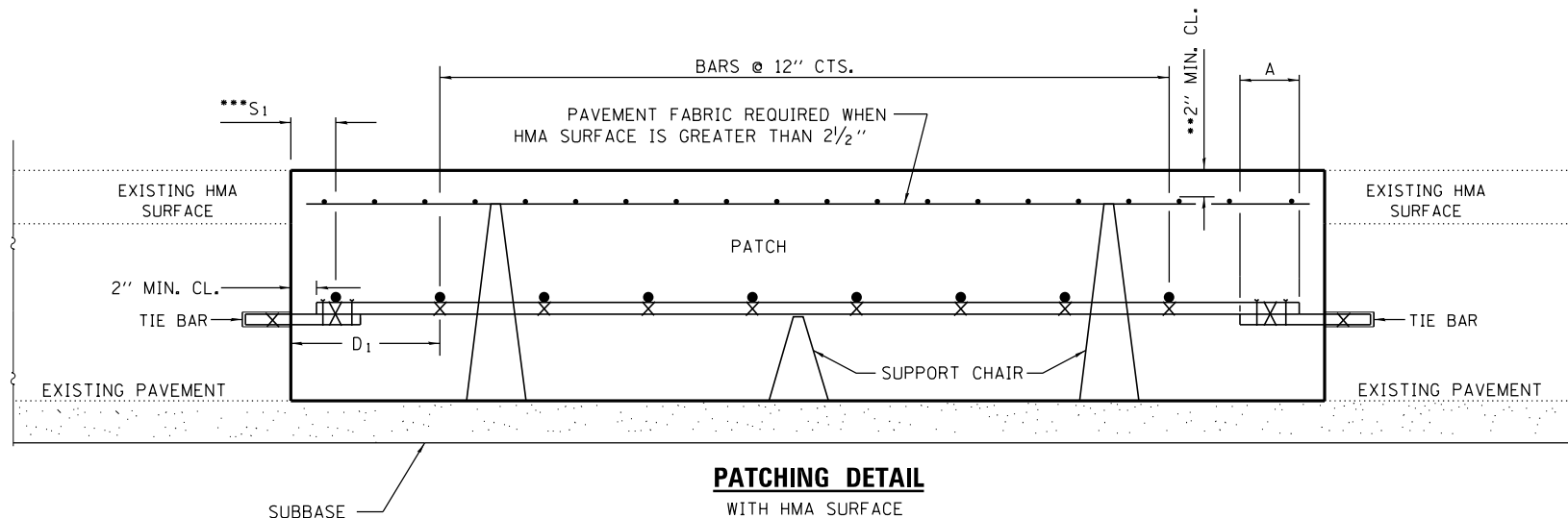
- EVERY 3rd INTERSECTION MUST BE TIED.
- WHEN THE MINIMUM CLEARANCE CANNOT BE OBTAINED WITH THE TRANSVERSE REBAR ON TOP, THEN THE TRANSVERSE REBAR SHALL BE TIED TO THE BOTTOM OF THE LONGITUDINAL REBAR.
- VARIABLES: WHERE  $S_1$  IS  $2\frac{1}{2}$ " MIN. AND 12" MAX.  $D_1 = 2(S_1)$

MINIMUM BAR LAP	A (MIN.)
#5	18"
#6	21"
#7	24"
FABRIC	18"

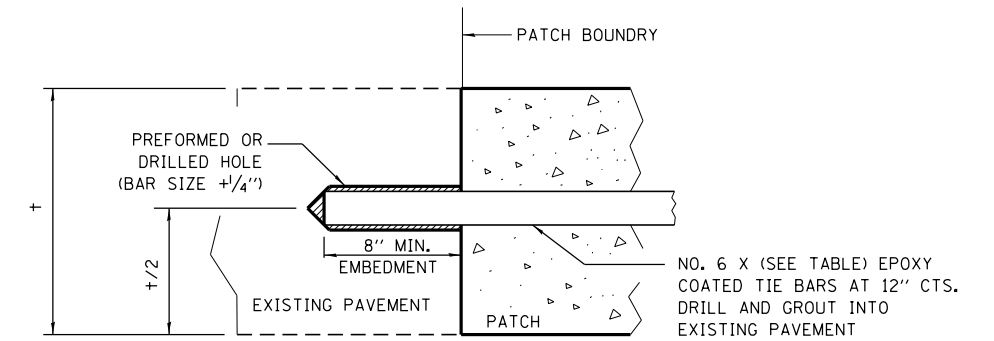
**PAVEMENT REINFORCEMENT DETAIL**



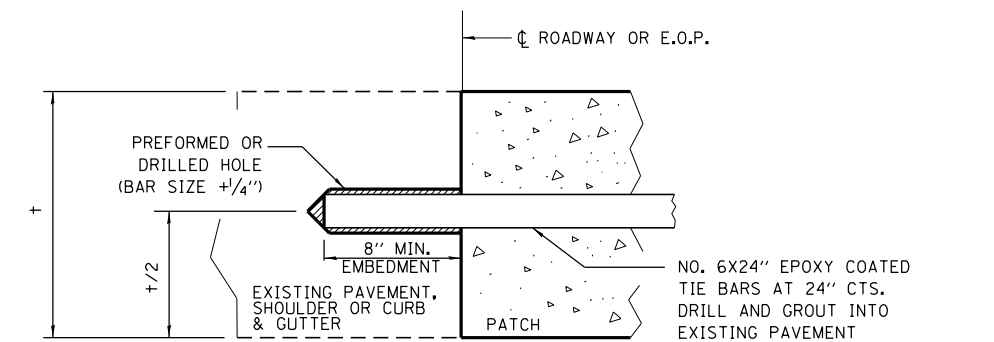
**PATCHING DETAIL**  
WITHOUT HMA SURFACE



**PATCHING DETAIL**  
WITH HMA SURFACE



**TRANSVERSE CONSTRUCTION JOINT**  
(TIE BAR GROUTED IN PLACE)



**LONGITUDINAL CONSTRUCTION JOINT**  
WHEN PATCH IS OVER 20' IN LENGTH  
(TIE BAR GROUTED IN PLACE)

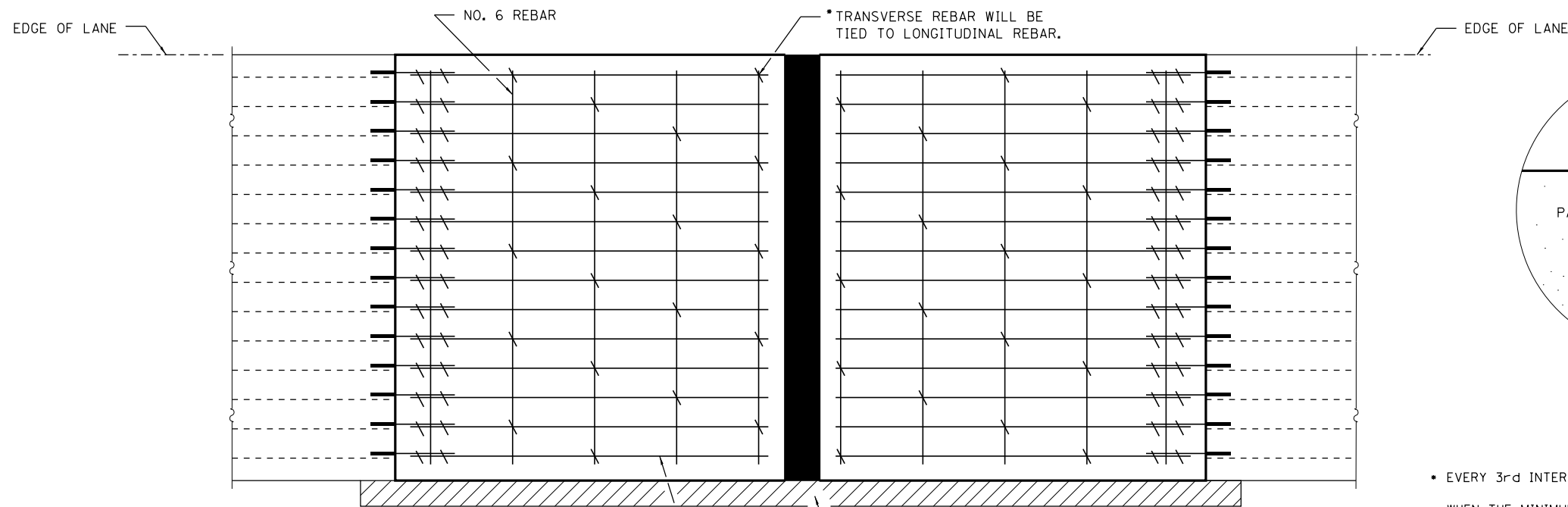
FILE NAME =	USER NAME = woodshankr1	DESIGNED - RW	REVISED -
ct:\pw\work\p\dot\woodshankr1\d0429589\0366E76-sh-t-detail.s.dgn		DRAWN - RW	REVISED -
	PLOT SCALE = 100.0000' / 1in.	CHECKED - EP	REVISED -
#MODELNAME#	PLOT DATE = 4/1/2015	DATE - 3/12/2015	REVISED -

STATE OF ILLINOIS  
DEPARTMENT OF TRANSPORTATION

**CLASS A PATCHES**

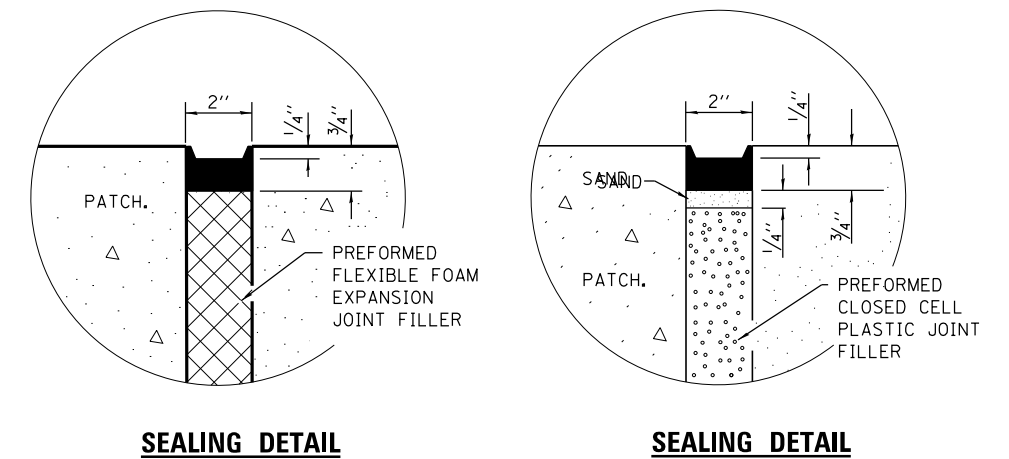
SCALE: \_\_\_\_\_ SHEET 2 OF 3 SHEETS STA. \_\_\_\_\_ TO STA. \_\_\_\_\_

F.A.I. RTE.	SECTION	COUNTY	TOTAL SHEETS	SHEET NO.
57	D3 PATCHING 2016-2	IROQUOIS	14	13
			CONTRACT NO. 66E76	
ILLINOIS				



TRANSVERSE REBAR WILL EXTEND TO OUTER LONGITUDINAL REBAR WHILE PROVIDING A MINIMUM 3" CLEARANCE FROM EXISTING PAVEMENT EDGE.

**PAVEMENT REINFORCEMENT DETAIL**

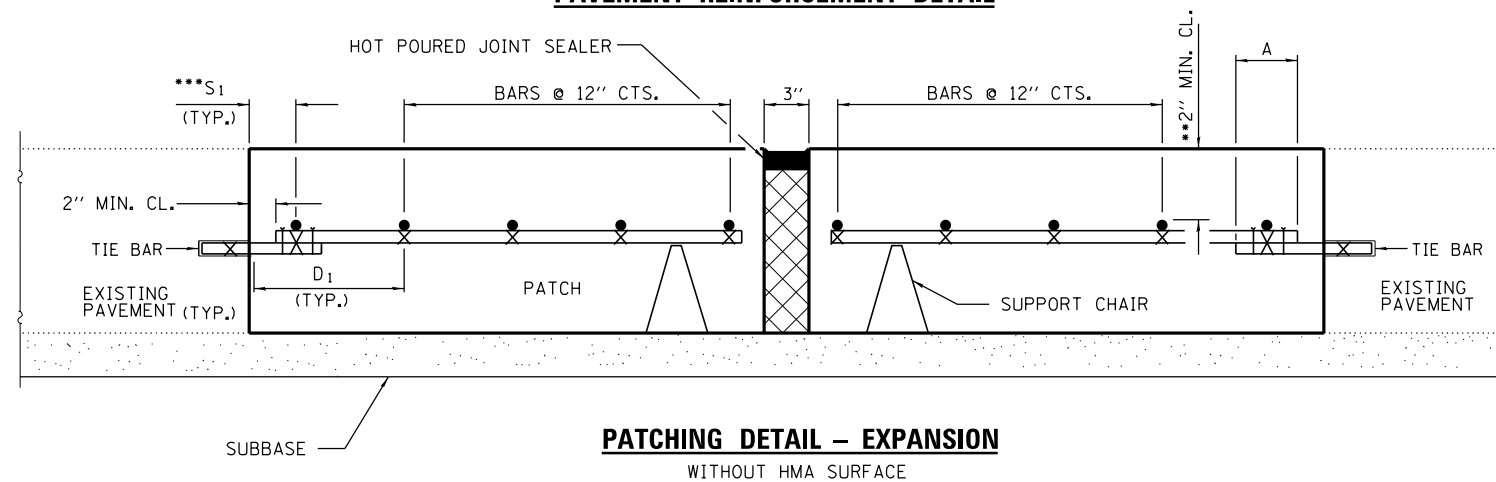


**SEALING DETAIL**

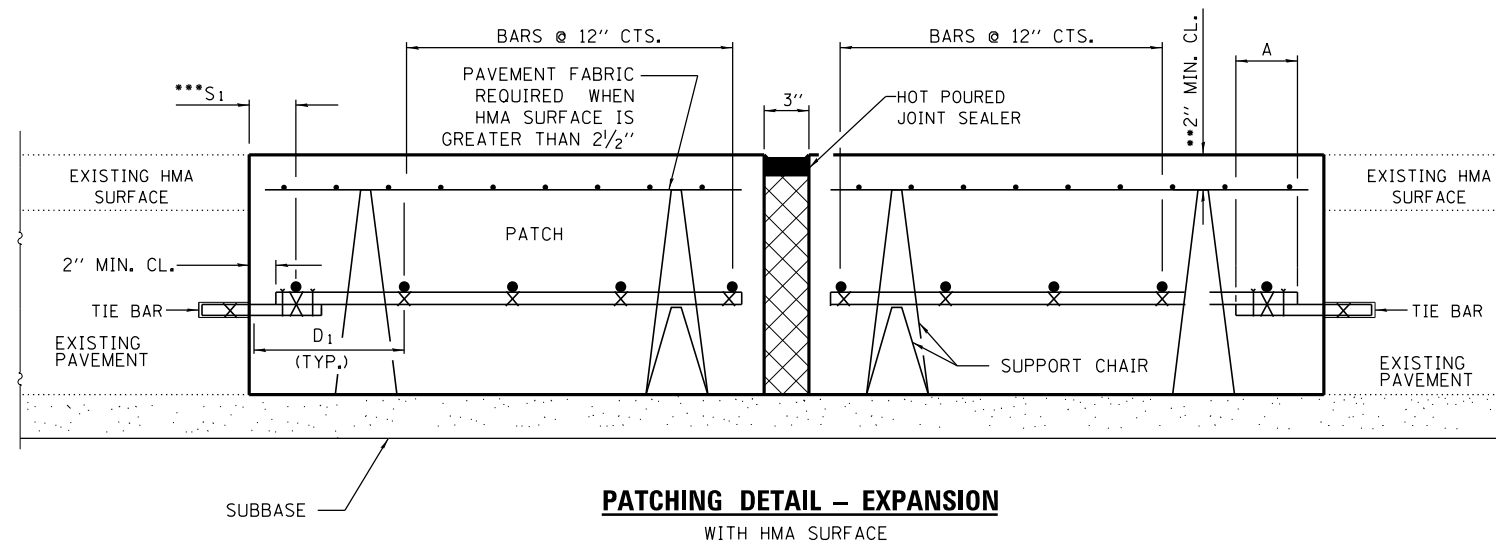
**SEALING DETAIL**

- EVERY 3rd INTERSECTION MUST BE TIED.
- WHEN THE MINIMUM CLEARANCE CANNOT BE OBTAINED WITH THE TRANSVERSE REBAR ON TOP, THEN THE TRANSVERSE REBAR SHALL BE TIED TO THE BOTTOM OF THE LONGITUDINAL REBAR.
- VARIABLES: WHERE  $S_1$  IS  $2\frac{1}{2}$ " MIN. AND 12" MAX.  $D_1 = 2(S_1)$

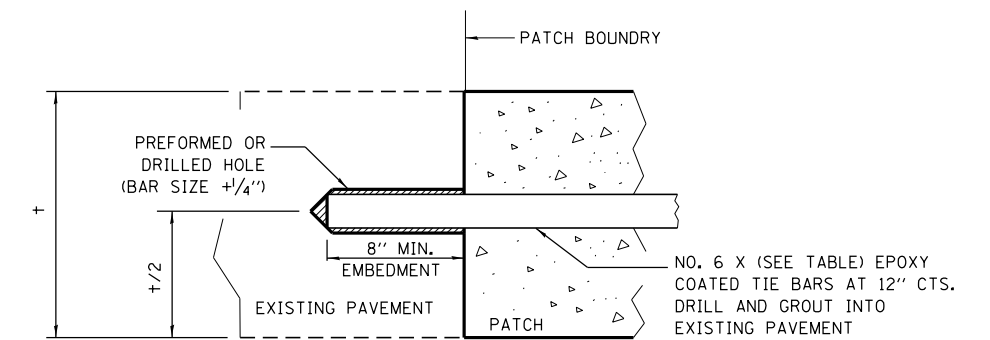
MINIMUM BAR LAP	A (MIN.)
#5	18"
#6	21"
#7	24"
FABRIC	18"



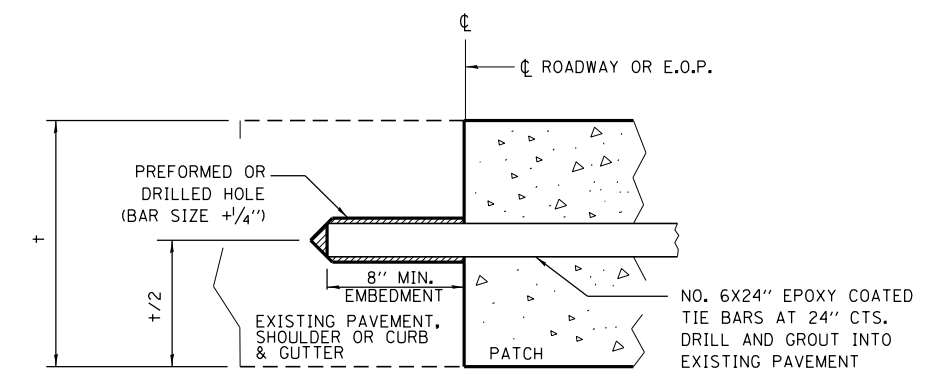
**PATCHING DETAIL - EXPANSION WITHOUT HMA SURFACE**



**PATCHING DETAIL - EXPANSION WITH HMA SURFACE**



**\* TRANSVERSE CONSTRUCTION JOINT (TIE BAR GROUTED IN PLACE)**



**LONGITUDINAL CONSTRUCTION JOINT WHEN PATCH IS OVER 20' IN LENGTH (TIE BAR GROUTED IN PLACE)**

FILE NAME =	USER NAME = woodshankr1	DESIGNED - RW	REVISED -
ct:\pwork\pwork\woodshankr1\d0429589\0366E76-sh-t-detail.dgn		DRAWN - RW	REVISED -
		CHECKED - EP	REVISED -
		DATE - 3/12/2015	REVISED -

STATE OF ILLINOIS  
DEPARTMENT OF TRANSPORTATION

**CLASS A PATCHES WITH EXPANSION**

SCALE: \_\_\_\_\_ SHEET 3 OF 3 SHEETS STA. \_\_\_\_\_ TO STA. \_\_\_\_\_

F.A.I. RTE.	SECTION	COUNTY	TOTAL SHEETS	SHEET NO.
57	D3 PATCHING 2016-2	IROQUOIS	14	14
			CONTRACT NO. 66E76	

ILLINOIS