

1. COVER SHEET
2. GENERAL NOTES
- 3-4. SUMMARY OF QUANTITIES
5. TYPICAL SECTIONS
- 6-7. SCHEDULES
- 8-9. ROADWAY PLAN - FOR INFORMATION ONLY
10. TRAFFIC CONTROL AND PROTECTION STANDARD 701400 (SPECIAL)
11. PAVEMENT MARKING
- 12-14. CLASS A PATCHING DETAILS

**LIST OF ILLINOIS DOT HIGHWAY STANDARDS**

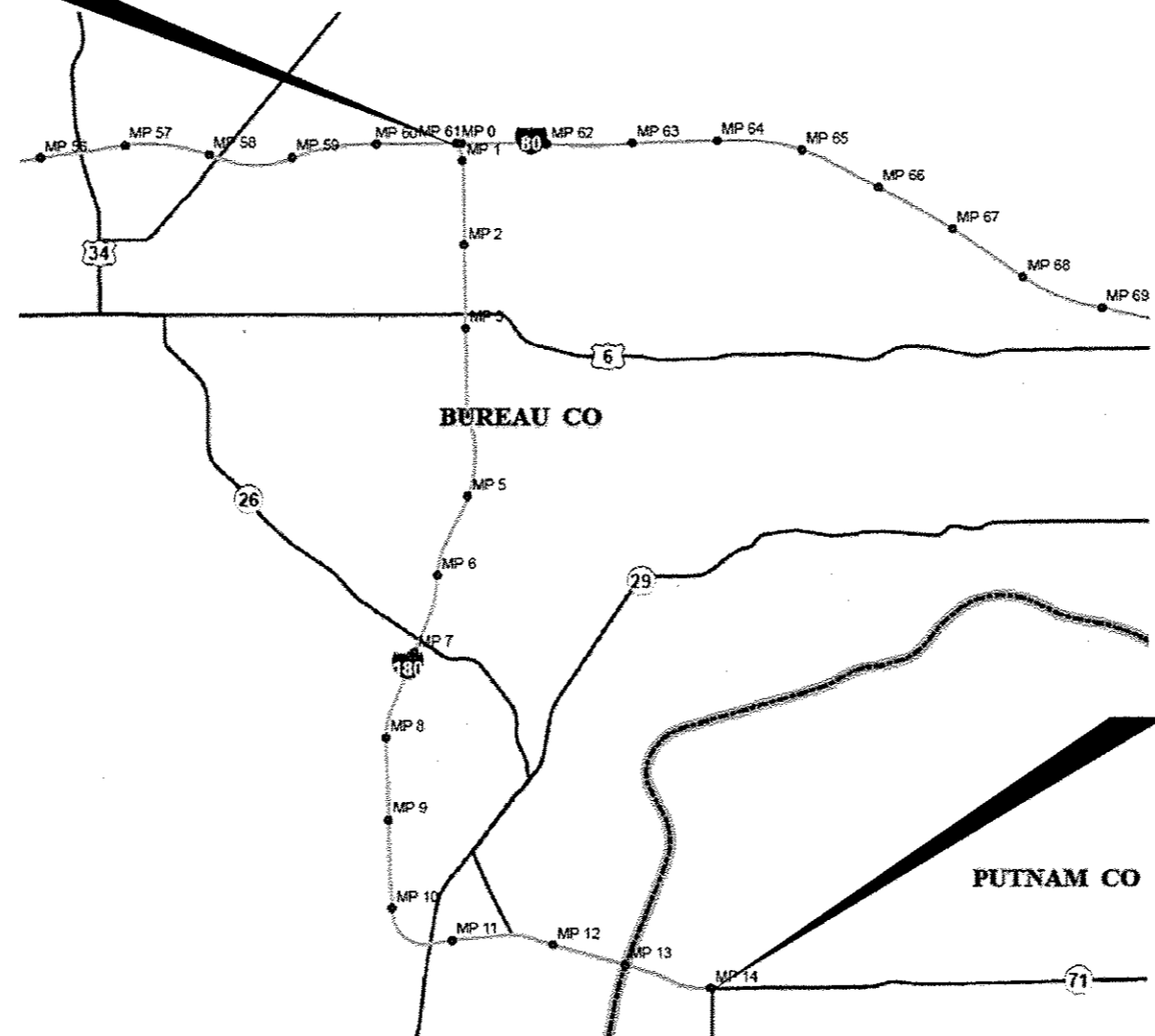
000001-06	STANDARD SYMBOLS, ABBREVIATIONS AND PATTERNS
001001-02	AREAS OF REINFORCEMENT BARS
001006	DECIMAL OF AN INCH AND OF A FOOT
701101-04	OFF-ROAD OPERATIONS MULTILANE, 15' (4.5 m) TO 24" (600 mm) FROM PAVEMENT EDGE
701106-02	OFF-ROAD OPERATIONS, MULTILANE, MORE THAN 15' (4.5 m) AWAY
701401-09	LANE CLOSURE, FREEWAY/EXPRESSWAY
701411-09	LANE CLOSURE, MULTILANE, AT ENTRANCE OR EXIT RAMP FOR SPEEDS ≥ 45 MPH
701426-07	LANE CLOSURE, MULTILANE INTERMITTENT OR MOVING OPERATION, FOR SPEEDS ≥ 45 MPH
701428	TRAFFIC CONTROL SETUP AND REMOVAL FREEWAY/EXPRESSWAY
701901-04	TRAFFIC CONTROL DEVICES

701456-03

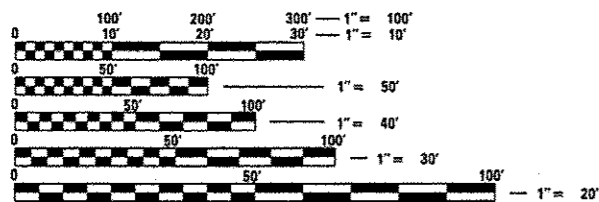
**STATE OF ILLINOIS**  
**DEPARTMENT OF TRANSPORTATION**  
**DIVISION OF HIGHWAYS**  
**PROPOSED**  
**HIGHWAY PLANS**  
**F.A.I. ROUTE 180 (I-180)**  
**SECTION D3 PATCHING 2016-4**  
**PAVEMENT PATCHING**  
**BUREAU COUNTY**

C-93-104-15

**IMPROVEMENT BEGINS**  
 BEGINNING OF FAI 180 AT I-80  
 M.M. 0.00



GROSS LENGTH = 74,448 FT. = 14.10 MILE  
 NET LENGTH = 1,484 FT. = 0.281 MILE



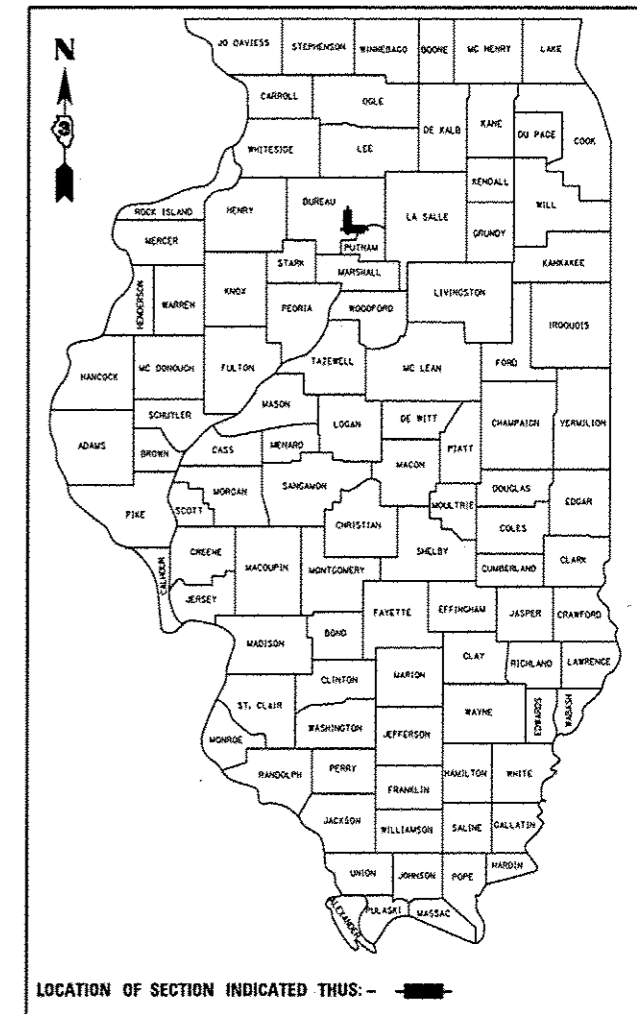
FULL SIZE PLANS HAVE BEEN PREPARED USING STANDARD ENGINEERING SCALES. REDUCED SIZED PLANS WILL NOT CONFORM TO STANDARD SCALES. IN MAKING MEASUREMENTS ON REDUCED PLANS, THE ABOVE SCALES MAY BE USED.

J.U.L.I.E.  
 JOINT UTILITY LOCATION INFORMATION FOR EXCAVATION  
 1-800-892-0123  
 OR 811

**PROJECT ENGINEER: JOE KANNEL P.E.**  
**UNIT CHIEF: RON WOODSHANK**  
**TOWNSHIPS: SELBY, ARISPIE, LEEPERTOWN**  
**CONTRACT NO. 66E80**

F.A.I. RTE.	SECTION	COUNTY	TOTAL SHEETS	SHEET NO.
80	D3 PATCHING 2016-4	BUREAU	14	1
		ILLINOIS	CONTRACT NO. 66E80	

D-93-002-15



LOCATION OF SECTION INDICATED THUS: - [black rectangle] -

RURAL  
 INTERSTATE  
 FAI 180 (I-180)  
 2013

ADT	1900
P.V.	78.47%
S.U.	12.50%
M.U.	9.03%

STATE OF ILLINOIS  
 DEPARTMENT OF TRANSPORTATION  
 DIVISION OF HIGHWAYS

SUBMITTED April 2 2015  
Paul Koetel 15  
 DEPUTY DIRECTOR OF HIGHWAYS, REGION ENGINEER

May 8 2015  
D. D. Baranelli PE/31  
 acting ENGINEER OF DESIGN AND ENVIRONMENT

May 8 2015  
Chris Osman PE/31  
 DIRECTOR OF HIGHWAYS, CHIEF ENGINEER

**PRINTED BY THE AUTHORITY  
 OF THE STATE OF ILLINOIS**

GENERAL NOTES

COMMITMENTS

PLAN DIMENSIONS AND DETAILS RELATIVE TO EXISTING PLANS ARE SUBJECT TO NOMINAL CONSTRUCTION VARIATIONS. THE CONTRACTOR SHALL FIELD VERIFY EXISTING DIMENSIONS AND DETAILS AFFECTING NEW CONSTRUCTION AND MAKE NECESSARY APPROVED ADJUSTMENTS PRIOR TO CONSTRUCTION OR ORDERING OF MATERIALS. SUCH VARIATIONS SHALL NOT BE CAUSE FOR ADDITIONAL COMPENSATION FOR A CHANGE IN SCOPE OF WORK; HOWEVER, THE CONTRACTOR WILL BE PAID FOR THE QUANTITY ACTUALLY FURNISHED AT THE UNIT PRICE BID FOR THE WORK.

ON EXISTING PAVEMENT WHICH MAY BE SUPERELEVATED, THE NEW CONCRETE PAVEMENT SHALL BE BUILT WITH THE SAME SUPERELEVATION UNLESS NEW SUPERELEVATION RATES ARE GIVEN ON THE PLANS.

ANY REFERENCE TO A STANDARD IN THESE PLANS SHALL BE INTERPRETED TO MEAN THE EDITION AS INDICATED BY THE SUBNUMBER SHOWN IN THE LIST OF STANDARDS OR THE COPY INCLUDED IN THESE PLANS.

THE CONTRACTOR SHALL CONTACT JULIE AT LEAST 48 HOURS PRIOR TO EXCAVATION TO DETERMINE WHICH UTILITIES ARE IN THE AREA.

ALL EXCAVATED MATERIAL, WHICH INCLUDES DIGGING OR GRADING OF ANY SOIL OR FILL MATERIAL, WITH THE EXCEPTION OF AGGREGATE FILLS, MUST BE INCORPORATED WITHIN THE IDOT RIGHT OF WAY DUE TO ENVIRONMENTAL DOCUMENTATION REQUIREMENTS.

DATE: April 2, 2015

PREPARED BY: Don Beaulieu  
DISTRICT STUDIES & PLANS ENGINEER

EXAMINED BY: David [Signature]  
DISTRICT CONSTRUCTION ENGINEER

Ray J. Pithy  
DISTRICT MATERIALS ENGINEER

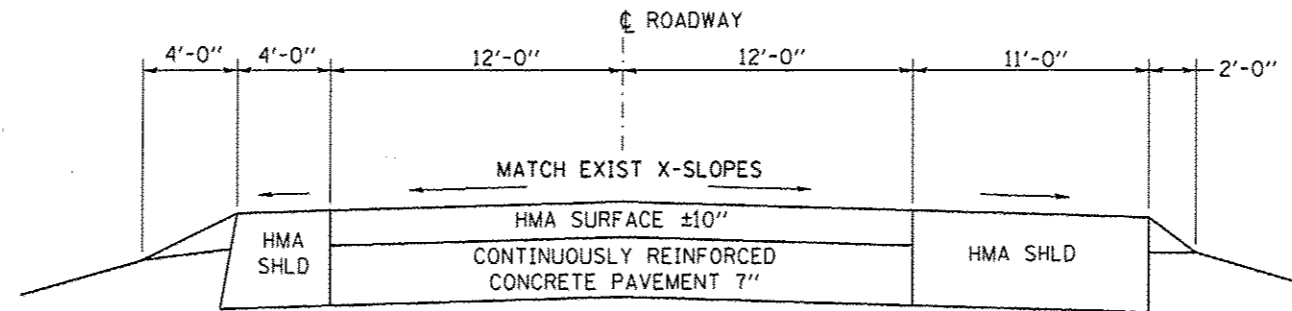
Bruce A. [Signature]  
DISTRICT OPERATIONS ENGINEER

FILE NAME *	USER NAME *	DESIGNED - RW	REVISED -	<b>STATE OF ILLINOIS DEPARTMENT OF TRANSPORTATION</b>	<b>GENERAL NOTES</b>	F.A.I. RTE.	SECTION	COUNTY	TOTAL SHEETS	SHEET NO.	
c:\pwork\pwork\woodshankr\0430231\0366E80-shc-details.dgn	woodshankr	DRAWN - RW	REVISED -			180	D3 PATCHING 2016-4	BUREAU	14	2	
#MODELNAME#	PLOT SCALE * 100.0000 "/ in.	CHECKED - EP	REVISED -			SCALE: _____ SHEET 1 OF 1 SHEETS STA. _____ TO STA. _____		ILLINOIS FED. AID PROJECT			
	PLOT DATE * 4/1/2015	DATE - 3/19/2015	REVISED -			CONTRACT NO. 66E80					

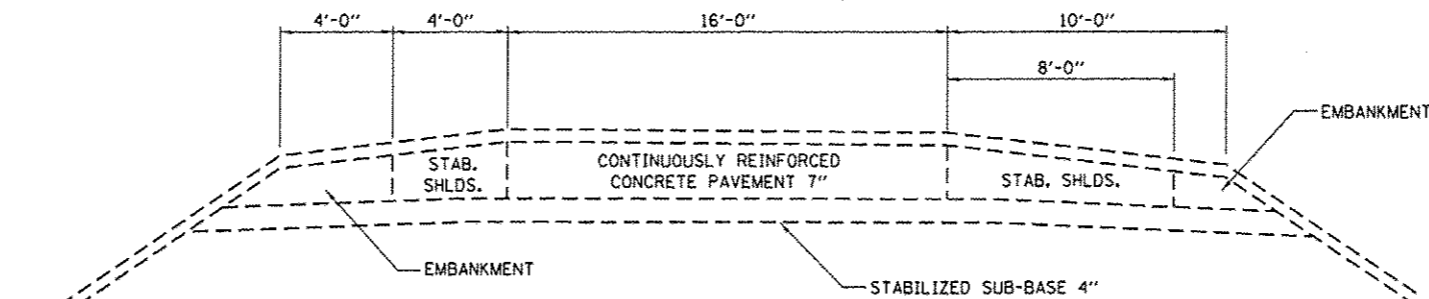
CODE NO.	ITEM	UNIT	TOTAL QUANTITY	CONSTR. CODE
				CONT. MAINT.
				100% STATE
				ROADWAY
				0005
				RURAL
44200637	CLASS A PATCHES, TYPE II, 17 INCH	SQ YD	842	842
44200641	CLASS A PATCHES, TYPE III, 17 INCH	SQ YD	208	208
44200643	CLASS A PATCHES, TYPE IV, 17 INCH	SQ YD	715	715
44213000	PATCHING REINFORCEMENT	SQ YD	1765	1765
44213100	PAVEMENT FABRIC	SQ YD	1765	1765
44213200	SAW CUTS	FOOT	5564	5564
44213204	TIE BARS 3/4"	EACH	3193	3193
67100100	MOBILIZATION	LSUM	1	1
70100420	TRAFFIC CONTROL AND PROTECTION, STANDARD 701411	EACH	10	10
70100825	TRAFFIC CONTROL AND PROTECTION, STANDARD 701456	LSUM	1	1
70103815	TRAFFIC CONTROL SURVEILLANCE	CAL DA	30	30
78009004	MODIFIED URETHANE PAVEMENT MARKING - LINE 4"	FOOT	1418	1418
78009006	MODIFIED URETHANE PAVEMENT MARKING - LINE 6"	FOOT	780	780
X7010410	SPEED DISPLAY TRAILER	CAL MO	1.5	1.5

\*SPECIALITY ITEMS

CODE NO.	ITEM	UNIT	TOTAL QUANTITY	CONSTR. CODE
				CONT. MAINT.
				100% STATE
				ROADWAY
				0005
				RURAL
X7010805	TRAFFIC CONTROL AND PROTECTION, STANDARD 701401 (SPECIAL)	LSUM	1	1
Z0030850	TEMPORARY INFORMATION SIGNING	SQ FT	84	84



**FAI 180**  
**NORTH-SOUTH LEG**  
 M.M. 0.00 TO M.M. 9.12 NBL  
 M.M. 0.00 TO M.M. 8.82 SBL  
  
**EAST-WEST LEG**  
 M.M. 9.76 TO M.M. 14.10 NBL  
 M.M. 9.76 TO M.M. 14.10 SBL



**RAMP D**

FILE NAME =	USER NAME = woodshankr1	DESIGNED - RW	REVISED - _____	<b>STATE OF ILLINOIS</b> <b>DEPARTMENT OF TRANSPORTATION</b>	<b>TYPICAL SECTIONS</b>	F.A.I. RTE.	SECTION	COUNTY	TOTAL SHEETS	SHEET NO.
ci:\pw\work\pvidot\woodshankr1\d0430231\366E80-sht-details.dgn	DRAWN - RW	REVISED - _____	180			D3 PATCHING 2016-4	BUREAU	14	5	
#MODELNAME#	DATE - 3/19/2015	REVISOR - _____	CONTRACT NO. 66E80							
PLOT SCALE = 100.0000' / 1" / in.	CHECKED - EP	REVISOR - _____	ILLINOIS FED. AID PROJECT							
PLOT DATE = 4/1/2015	DATE - 3/19/2015	REVISOR - _____	SCALE: _____ SHEET 1 OF 1 SHEETS STA. _____ TO STA. _____							

PATCHING SCHEDULE

LOCATION BY MILE POST	PASS LANE	DRIVING LANE	PASSING LANE							DRIVING LANE						
			CLASS A PATCHING			PAV'T FABRIC	PATCH REINF.	SAW CUTS	TIE BARS	CLASS A PATCHING			PAV'T FABRIC	PATCH REINF.	SAW CUTS	TIE BARS
			TYPE II	TYPE III	TYPE IV					TYPE II	TYPE III	TYPE IV				
SO YD	SO YD	SO YD	SO YD	SO YD	SO YD	FOOT	EACH	SO YD	SO YD	SO YD	SO YD	SO YD	FOOT	EACH		
SOUTHBOUND LANES																
1.38	6	6	8			8	8	36	24	8			8	8	36	24
1.50	6	6	8			8	8	36	24	8			8	8	36	24
1.67	10	10	13			13	13	44	24	13			13	13	44	24
1.70	20					27	27	64	34							
1.80	20					27	27	64	34							
2.30	10	10	13			13	13	44	24	13			13	13	44	24
2.40	10	10	13			13	13	44	24	13			13	13	44	24
2.50	15	15		20		20	20	54	24		20		20	20	54	24
2.60	8	8	11			11	11	40	24	11			11	11	40	24
2.70		20									27		27	27	64	34
2.80	20	20			27	27	27	64	34		27		27	27	64	34
3.10	6	6	8			8	8	36	24	8			8	8	36	24
3.20	6	6	8			8	8	36	24	8			8	8	36	24
3.70	20	20			27	27	27	64	34				27	27	64	34
3.90	12	12		16		16	16	48	24		16		16	16	48	24
4.10		20									27		27	27	64	34
4.20		20									27		27	27	64	34
4.20		10								13			13	13	44	24
4.40		6								8			8	8	36	24
4.50		20									27		27	27	64	34
4.60		20									27		27	27	64	34
4.40	10	10	13			13	13	44	24	13			13	13	44	24
4.80	12	12		16		16	16	48	24	0	16		16	16	48	24
5.00	30	20			40	40	40	84	39				27	27	64	34
5.30		20									27		27	27	64	34
5.30	12			16		16	16	48	24							
5.40		12									16		16	16	48	24
5.70	8	8	11			11	11	40	24	11			11	11	40	24
5.90	20	20			27	27	27	64	34		27		27	27	64	34
6.60	6	6	8			8	8	36	24	8			8	8	36	24
6.80	6	6	8			8	8	36	24	8			8	8	36	24
6.90	6	6	8			8	8	36	24	8			8	8	36	24
7.20	6	6	8			8	8	36	24	8			8	8	36	24
8.10	6	6	8			8	8	36	24	8			8	8	36	24
8.20	20				27	27	27	64	34							
8.50	10	10	13		0	13	13	44	24	13			13	13	44	24
8.70	20	20			27	27	27	64	34			27	27	27	64	34
10.10	6	6	8			8	8	36	24	8			8	8	36	24
10.50	10	10	13			13	13	44	24	13			13	13	44	24
10.70	12	12		16		16	16	48	24		16		16	16	48	24
10.80	6	6	8			8	8	36	24	8			8	8	36	24
13.70	6	6	8			8	8	36	24	8			8	8	36	24
13.90	8	8	11			11	11	40	24	11			11	11	40	24
14.20	8	8	11			11	11	40	24	11			11	11	40	24
SB SUBTOTALS			218	84	229	531	531	1634	925	239	84	297	620	620	1886	1070

SOUTHBOUND TOTALS

CLASS A PATCHING			PAV'T FABRIC	PATCH REINF.	SAW CUTS	TIE BARS
TYPE II	TYPE III	TYPE IV				
SO YD	SO YD	SO YD	SO YD	SO YD	FOOT	EACH
457	168	526	1151	1151	3520	1995

PAVEMENT MARKING SCHEDULE

LOCATION BY MILE POST	MODIFIED URETHANE PAVEMENT MARKING LINE 4"		MODIFIED URETHANE PAVEMENT MARKING LINE 6"
	FEET		FEET
	YELLOW	WHITE	WHITE
SOUTH/EASTBOUND LANES			
1.38	6	6	10
1.50	6	6	10
1.67	10	10	10
1.70	20		10
1.80	20		10
2.30	10	10	10
2.40	10	10	10
2.50	15	15	10
2.60	8	8	10
2.70		20	10
2.80	20	20	10
3.10	6	6	10
3.20	6	6	10
3.70	20	20	10
3.90	12	12	10
4.10		20	10
4.20		20	10
4.20		10	10
4.40		6	10
4.50		20	10
4.60		20	10
4.40	10	10	10
4.80	12	12	10
5.00	30	20	10
5.30		20	10
5.30	12		10
5.40		12	10
5.70	8	8	10
5.90	20	20	10
6.60	6	6	10
6.80	6	6	10
6.90	6	6	10
7.20	6	6	10
8.10	6	6	10
8.20	20		10
8.50	10	10	10
8.70	20	20	10
10.10	6	6	10
10.50	10	10	10
10.70	12	12	10
10.80	6	6	10
13.70	6	6	10
13.90	8	8	10
14.10	8	8	10
RAMP D	30	30	50
SUBTOTAL	427	493	
SB TOTALS	920		490

PATCH LENGTH	RAMP D				
	CLASS A TYPE II SO YD	PAV'T FABRIC SO YD	PATCH REINF. SO YD	SAW CUTS FOOT	TIE BARS EACH
6	11	11	11	44	32
6	8	8	8	36	32
6	8	8	8	36	32
6	8	8	8	36	32
6	8	8	8	36	32
RAMP TOTALS	43	43	43	188	160

PATCHING SCHEDULE

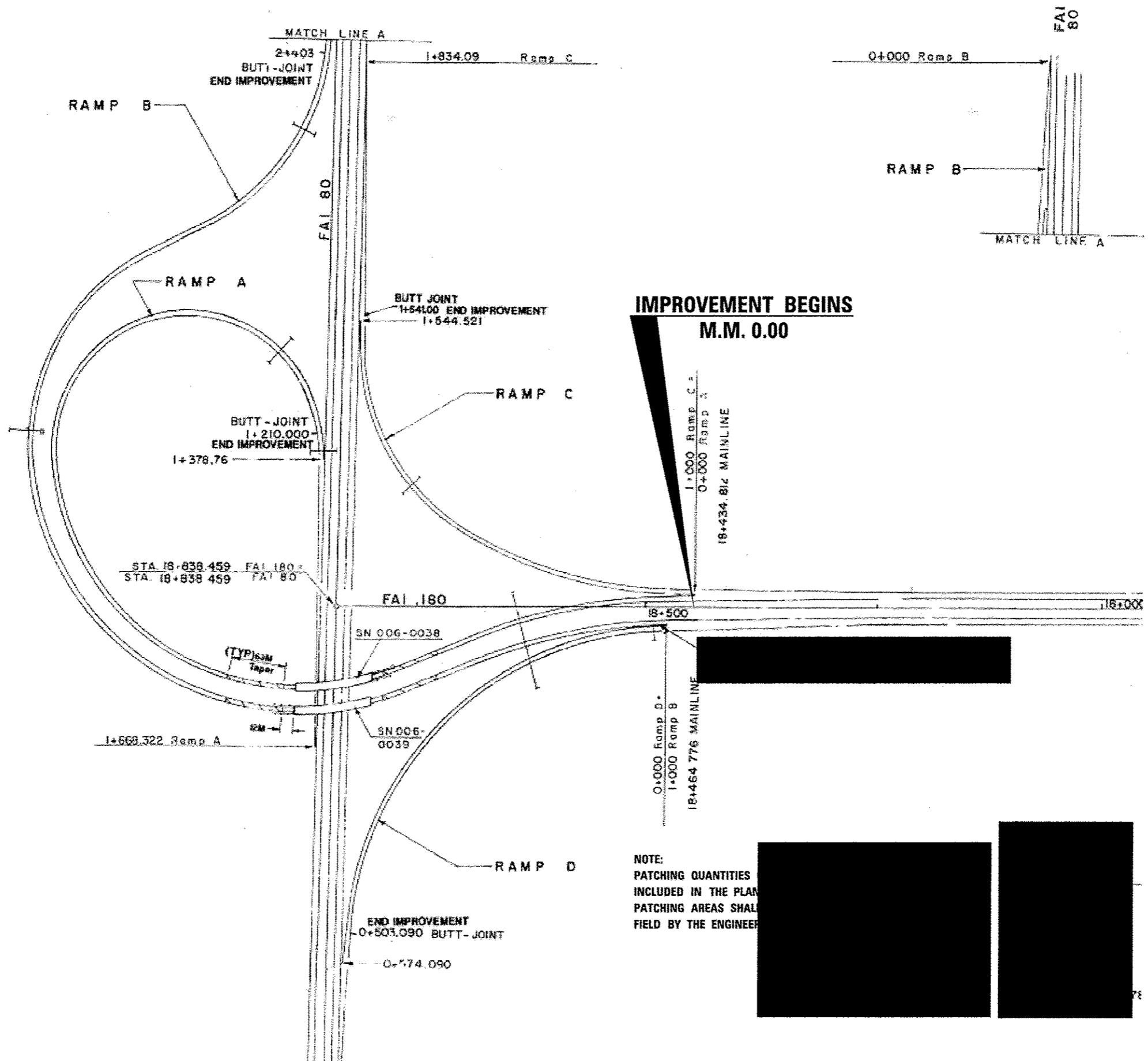
LOCATION BY MILE POST	PASS LANE	DRIVING LANE	PASSING LANE							DRIVING LANE						
			CLASS A PATCHING			PAV'T FABRIC	PATCH REINF.	SAW CUTS	TIE BARS	CLASS A PATCHING			PAV'T FABRIC	PATCH REINF.	SAW CUTS	TIE BARS
			TYPE II	TYPE III	TYPE IV					TYPE II	TYPE III	TYPE IV				
SO YD	SO YD	SO YD	SO YD	SO YD	FOOT	EACH	SO YD	SO YD	SO YD	SO YD	SO YD	FOOT	EACH			
NORTHBOUND LANES																
14.40	20	20			27	27	27	64	34			27	27	27	64	34
14.20	15	15		20		20	20	54	24		20		20	20	54	24
13.90	20				27	27	27	64	34							
13.80	10	10	13			13	13	44	24			13	13	44	24	
13.60	10	10	13			13	13	44	24		20	13	13	44	24	
13.40	6	6	8			8	8	36	24			8	8	36	24	
10.80	8	8	11			11	11	40	24			11	11	40	24	
10.70	6	6	8			8	8	36	24			8	8	36	24	
10.60	8		11			11	11	40	24							
10.50	8		11			11	11	40	24							
10.10	8	8	11			11	11	40	24	11		11	11	40	24	
9.90	8	8	11			11	11	40	24	11		11	11	40	24	
8.20	6	6	8			8	8	36	24	8		8	8	36	24	
6.90	6	6	8			8	8	36	24	8		8	8	36	24	
6.70	6	6	8			8	8	36	24	8		8	8	36	24	
6.40	6	6	8			8	8	36	24	8		8	8	36	24	
6.20	6	6	8			8	8	36	24	8		8	8	36	24	
5.50		20									27	27	27	64	34	
5.50	8		11			11	11	40	24							
4.80	8	8	11			11	11	40	24	11		11	11	40	24	
4.20	6	6	8			8	8	36	24	8		8	8	36	24	
3.90	6		8			8	8	36	24							
3.50	10	10	13			13	13	44	24	13		13	13	44	24	
2.80	10	10	13			13	13	44	24	13		13	13	44	24	
1.90	20				27	27	27	64	34							
1.80	10		13			13	13	44	24							
1.60	20	20			27	27	27	64	34			27	27	27	64	34
NB SUBTOTALS			214	20	108	342	342	1134	664	171	20	81	272	272	910	534

NORTHBOUND TOTALS

CLASS A PATCHING							PAV'T FABRIC	PATCH REINF.	SAW CUTS	TIE BARS
TYPE II	TYPE III	TYPE IV	TYPE II	TYPE III	TYPE IV	TYPE II				
SO YD	SO YD	SO YD	SO YD	SO YD	SO YD	SO YD	FOOT	EACH		
385	40	189	614	614	2044	1198				

PAVEMENT MARKING SCHEDULE

LOCATION MILE POST	MODIFIED URETHANE PAVEMENT MARKING LINE 4"		MODIFIED URETHANE PAVEMENT MARKING LINE 6"
	FEET		FEET
	YELLOW	WHITE	WHITE
WEST/NORTHBOUND LANES			
14.40	20	20	10
14.20	15	15	10
13.90	20		10
13.80		8	10
13.60	10	10	10
13.40	6	6	10
10.80	8	8	10
10.70	6	6	10
10.60	8		10
10.50	8		10
10.10	8	8	10
9.90	8	8	10
8.20	6	6	10
6.90	6	6	10
6.70	6	6	10
6.40	6	6	10
6.20	6	6	10
5.50		20	10
5.50	8		10
4.80	8	8	10
4.20	6	6	10
3.90	6		10
3.50	10	10	10
2.80	10	10	10
1.90	20		10
1.80	10		10
1.60	20	20	10
1.60	20	20	10
SUBTOTAL	275	223	
NB TOTALS	498		290



**IMPROVEMENT BEGINS  
M.M. 0.00**

NOTE:  
PATCHING QUANTITIES  
INCLUDED IN THE PLAN  
PATCHING AREAS SHALL  
FIELD BY THE ENGINEER

FILE NAME *	USER NAME * woodshenkr1	DESIGNED - RW	REVISED - _____
oi:\p\work\p\w\dot\woodshenkr1\d0438231\366E80-shr-detail.dgn		DRAWN - RW	REVISED - _____
MODEL NAME *		CHECKED - EP	REVISED - _____
		DATE - 3/19/2015	REVISED - _____

STATE OF ILLINOIS  
DEPARTMENT OF TRANSPORTATION

ROADWAY PLAN

SCALE: \_\_\_\_\_ SHEET 1 OF 2 SHEETS STA. \_\_\_\_\_ TO STA. \_\_\_\_\_

F.A.I. RTE.	SECTION	COUNTY	TOTAL SHEETS	SHEET NO.
180	D3 PATCHING 2016-4	BUREAU	14	8
			CONTRACT NO. 66E80	
ILLINOIS FED. AID PROJECT				



ROUTE NO.	SEC.	COUNTY	TOTAL SHEETS	SHEET NO.
**	**	BUREAU	20	17
FED. ROAD DIST. NO. 7 RAILROAD PROJECT				
** (06-2)RS				

**CURVE DATA**  
**ROADWAY E**  
 PI = 647+16.90  
 D = 3° 00' 00"  
 SE = 0.08 1/1  
 TRANSITION = 628+96.68 to 631+36.68  
 TRANSITION = 657+23.34 to 659+23.34

**CURVE DATA**  
**ROADWAY F**  
 PI = 653+08.53  
 D = 3° 00' 00"  
 SE = 0.08 1/1  
 TRANSITION = 631+84.32 to 634+24.32  
 TRANSITION = 663+31.23 to 665+31.23

**CURVE DATA**  
**ROADWAY G**  
 PI = 655+62.70  
 D = 3° 00' 00"  
 SE = 0.08 1/1  
 TRANSITION = 635+40.30 to 637+40.30  
 TRANSITION = 665+86.08 to 667+86.08

**CURVE DATA**  
**ROADWAY H**  
 PI = 658+57.37  
 D = 3° 00' 00"  
 SE = 0.08 1/1  
 TRANSITION = 641+57.58 to 643+57.58  
 TRANSITION = 668+48.14 to 670+48.14

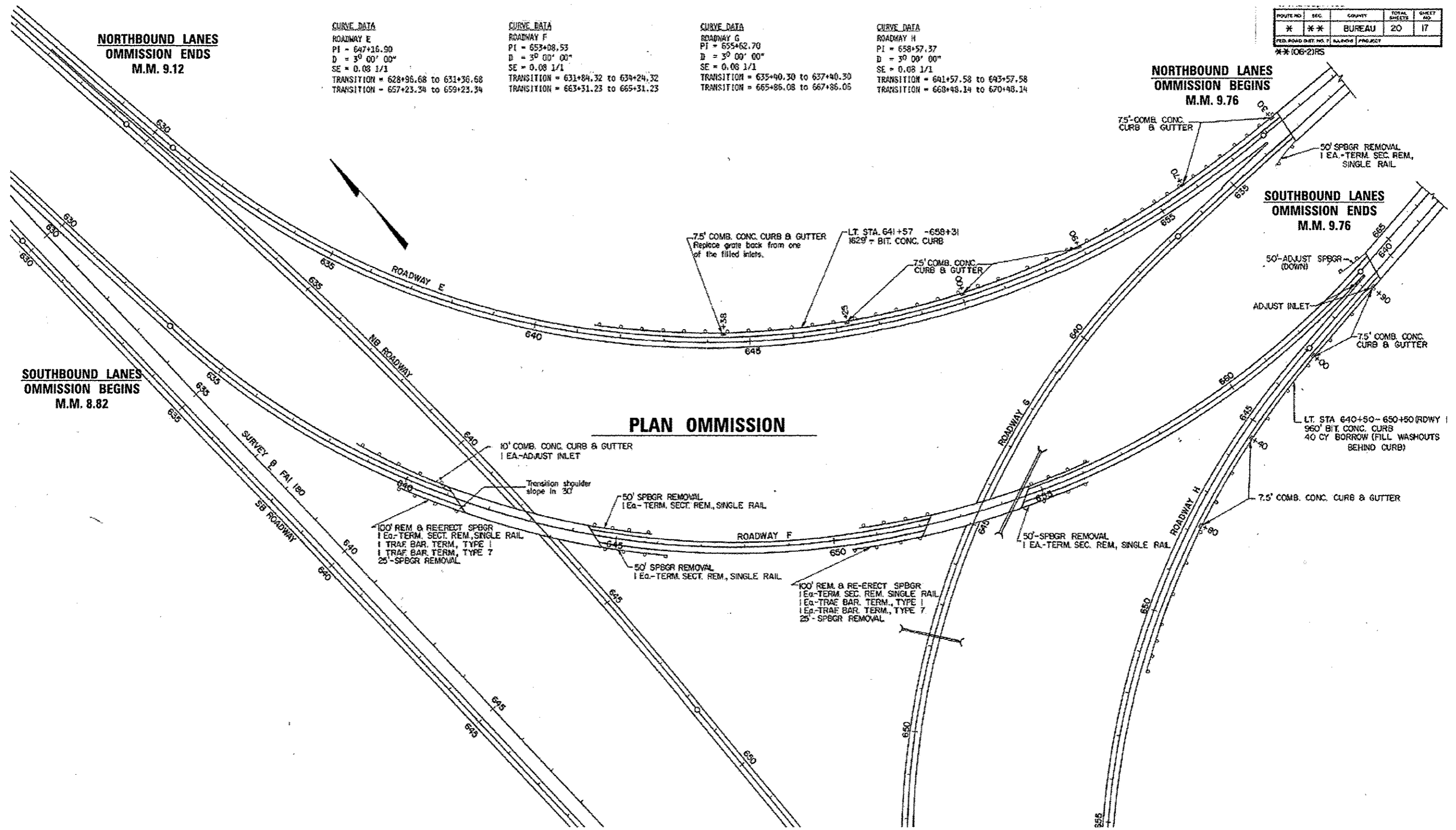
**NORTHBOUND LANES**  
**OMISSION ENDS**  
**M.M. 9.12**

**NORTHBOUND LANES**  
**OMISSION BEGINS**  
**M.M. 9.76**

**SOUTHBOUND LANES**  
**OMISSION BEGINS**  
**M.M. 8.82**

**SOUTHBOUND LANES**  
**OMISSION ENDS**  
**M.M. 9.76**

**PLAN OMISSION**



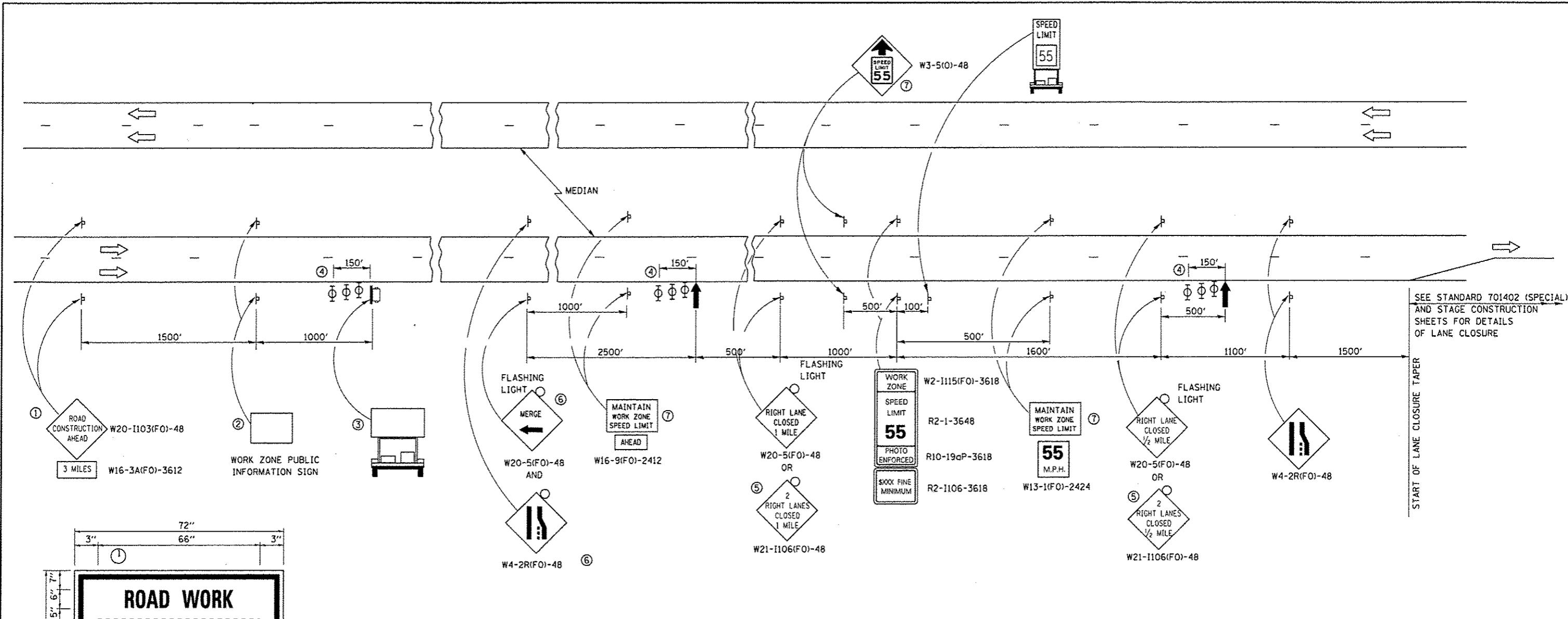
FILE NAME =	USER NAME = woodshankr1	DESIGNED - RW	REVISED -
c:\pwork\pwork\woodshankr1\48438231\	366E80-sht-details.dgn	DRAWN - RW	REVISED -
#MODELNAME#	PLOT SCALE = 100.0000' / 1"	CHECKED - EP	REVISED -
	PLOT DATE = 4/1/2015	DATE - 3/19/2015	REVISED -

**STATE OF ILLINOIS**  
**DEPARTMENT OF TRANSPORTATION**

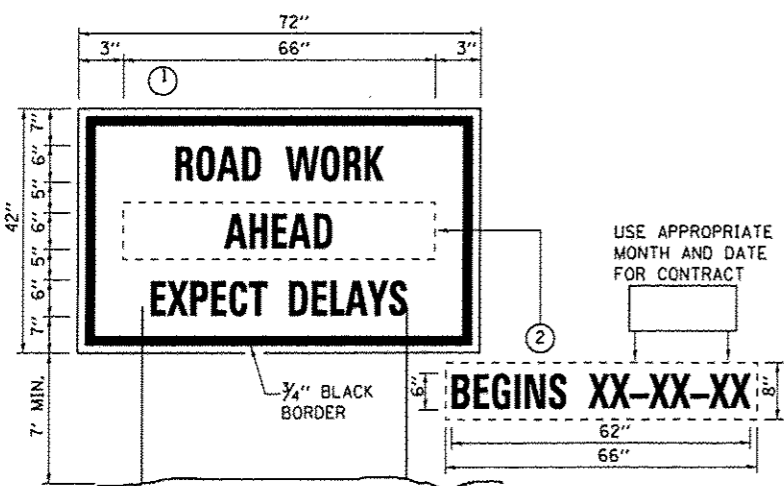
**ROADWAY PLAN**

SCALE: \_\_\_\_\_ SHEET 2 OF 2 SHEETS STA. \_\_\_\_\_ TO STA. \_\_\_\_\_

F.A.I. RTE.	SECTION	COUNTY	TOTAL SHEETS	SHEET NO.
180	D3 PATCHING 2016-4	BUREAU	14	9
			CONTRACT NO. 66E80	
ILLINOIS FED. AID PROJECT				



SEE STANDARD 701402 (SPECIAL) AND STAGE CONSTRUCTION SHEETS FOR DETAILS OF LANE CLOSURE

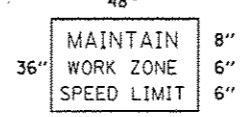


**TEMPORARY INFORMATION SIGNING**

- NOTES:**
1. USE 6" D BLACK LETTERING ON FLOURESENT ORANGE BACKGROUND.
  2. ERECT SIGNS AT LOCATIONS IN ADVANCE OF THE "ROAD CONSTRUCTION AHEAD" SIGNS ON EACH SIDE OF THE ROADWAY AS DIRECTED BY THE ENGINEER.
  3. ERECT SIGN ① WITH INSTALLED PANEL ② A MINIMUM OF ONE WEEK PRIOR TO THE START OF THE LANE CLOSURE.
  4. REMOVE PANEL ② ON THAT DATE.
  5. SEE SPECIAL PROVISION "TEMPORARY INFORMATION SIGNING" FOR ADDITIONAL INFORMATION.
  6. WILL BE PAID FOR PER SQ FT AS "TEMPORARY INFORMATION SIGNING". EACH SIGN = 21 SQ FT AND THE DATE PANEL ② WILL NOT BE MEASURED SEPARATELY FOR PAYMENT.

- ① THE ROAD CONSTRUCTION AHEAD SIGN SHALL BE LOCATED 3 MILES IN ADVANCE OF THE PROJECT LIMITS.
- ② THE MESSAGE AND SIZE OF THE WORK ZONE PUBLIC INFORMATION SIGN SHALL BE AS SPECIFIED BY THE DEPARTMENT.
- ③ TO BE PLACED IN THE MEDIAN WHEN FEASIBLE. THE MESSAGE BOARD SHALL BE USED TO DISPLAY STATUS OF LANES WITHIN THE PROJECT. THE PRIMARY MESSAGES SHALL BE:  
"RIGHT LANE CLOSED" / " x MILES AHEAD"  
"LEFT LANE CLOSED" / " x MILES AHEAD"  
"ALL LANES OPEN"
- ④ THREE, TYPE II BARRICADES, DRUMS, OR VERTICAL BARRICADES AT 50' CENTERS.
- ⑤ THIS SIGN SHALL BE USED WHEN 2 LANES ARE CLOSED.
- ⑥ WHEN THE LEFT LANE IS CLOSED, SWITCH THESE TWO SIGNS AND THE DIRECTION OF THE MERGE ARROW.
- ⑦ THIS SIGN SHALL ONLY BE USED IF THE EXISTING SPEED LIMIT IS GREATER THAN 65 MPH.

⑦ 48"x36" FLUORESCENT ORANGE SIGN WITH BLACK LETTERS.



- ↑ ARROW BOARD
- ☐ PORTABLE CHANGEABLE MESSAGE SIGN
- ⊥ SIGN
- ⊕ TYPE II BARRICADE, DRUM, OR VERTICAL BARRICADE WITH MONODIRECTIONAL FLASHING LIGHT
- 🚚 SPEED DISPLAY TRAILER

**GENERAL NOTE:**

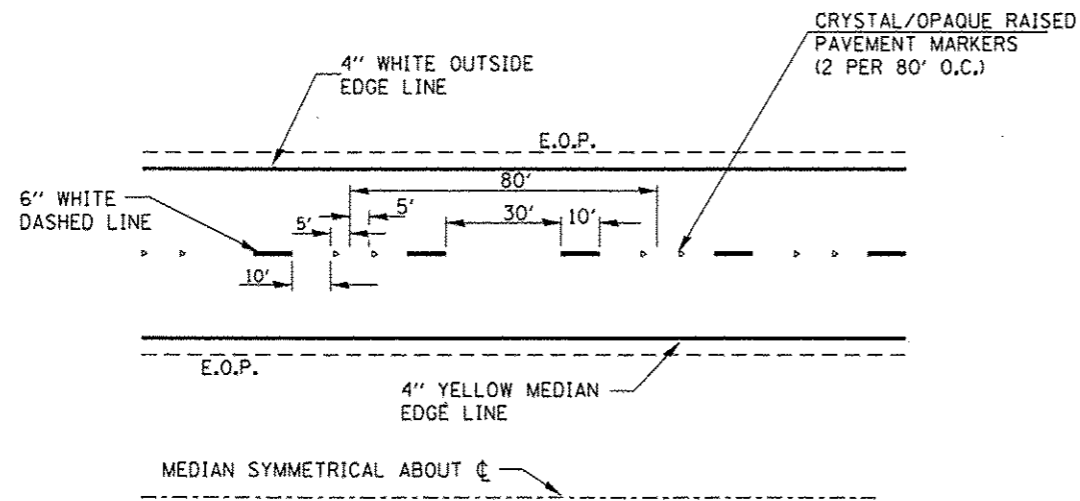
THIS STANDARD IS USED WHERE AT ANY TIME A LANE IS CLOSED ON A FREEWAY/EXPRESSWAY.

WHEN THE LEFT LANE IS CLOSED, LEFT LANE CLOSED SIGNS SHALL BE SUBSTITUTED FOR THE RIGHT LANE CLOSED SIGNS.

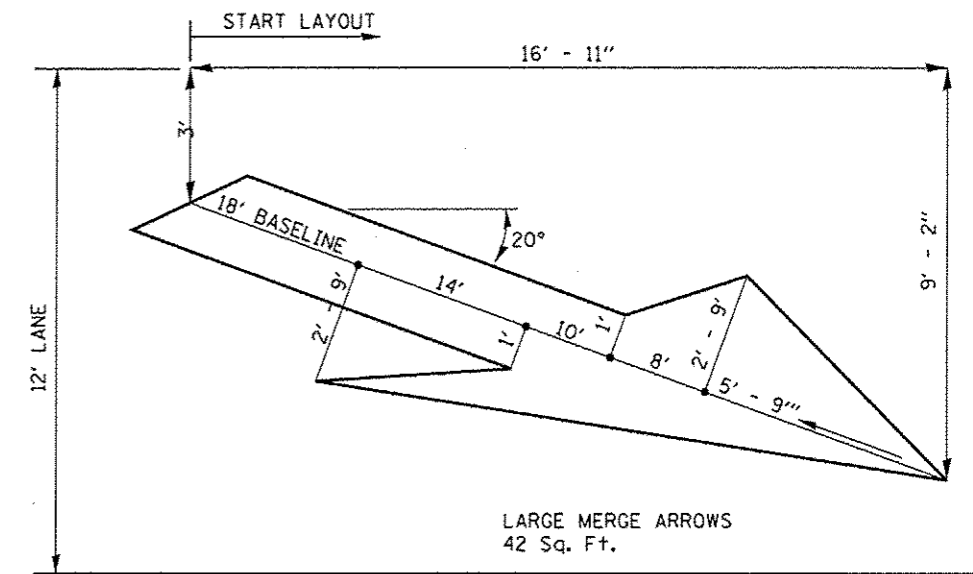
THE FIRST TWO SIGNS AND THE MESSAGE BOARD ARE STATIONARY. THE OTHER SIGNS AND ARROWBOARDS SHALL BE MOVED AS NECESSARY TO MAINTAIN THE REQUIRED DISTANCE FROM THE START OF THE LANE CLOSURE TAPER(S).

SEE SPECIAL PROVISIONS.

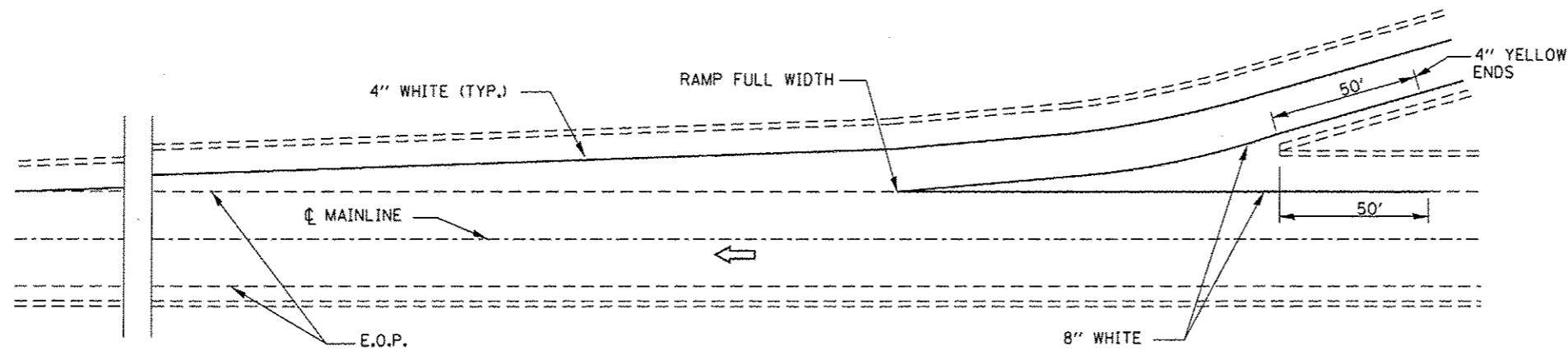
FILE NAME	USER NAME	DESIGNED	REVISED	<b>STATE OF ILLINOIS DEPARTMENT OF TRANSPORTATION</b>	<b>TRAFFIC CONTROL AND PROTECTION STANDARD 701400 (SPECIAL)</b>	F.A.I. RTE.	SECTION	COUNTY	TOTAL SHEETS	SHEET NO.	
or\pw\work\p\d\dot\woodshankr\1\d8438231\366E80-sht-details.dgn	woodshankr1	DRAWN	REVISED			180	D3 PATCHING 2016-4	BUREAU	14	10	
#MODELNAME#		CHECKED	REVISED			CONTRACT NO. 66E80					
		DATE	REVISED			ILLINOIS FED. AID PROJECT					



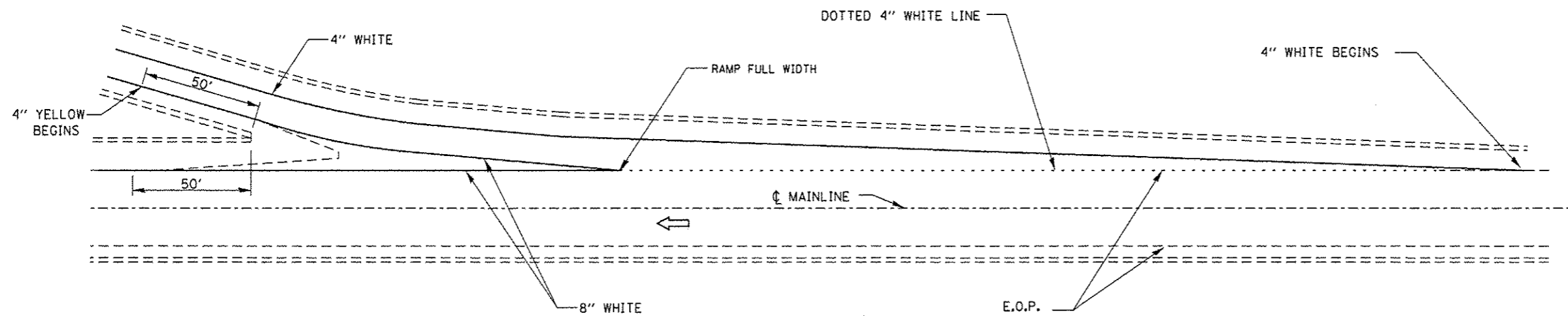
**TYPICAL PAVEMENT MARKINGS**



**LANE DROP ARROW**

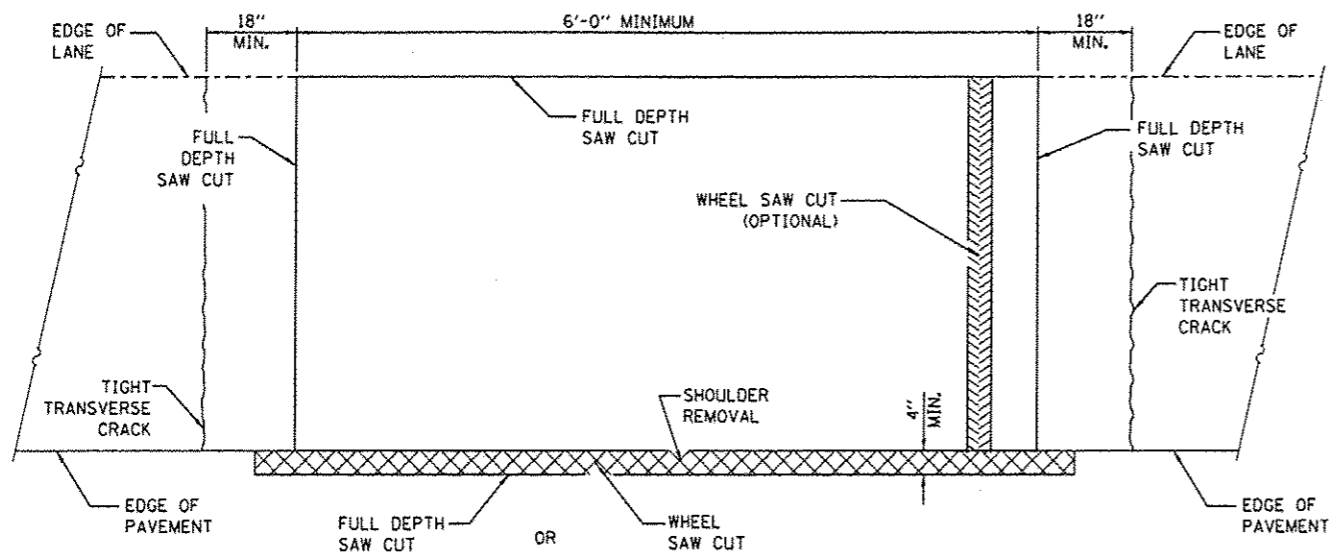


**TYPICAL PAVEMENT MARKING FOR ENTRANCE RAMP TERMINALS**

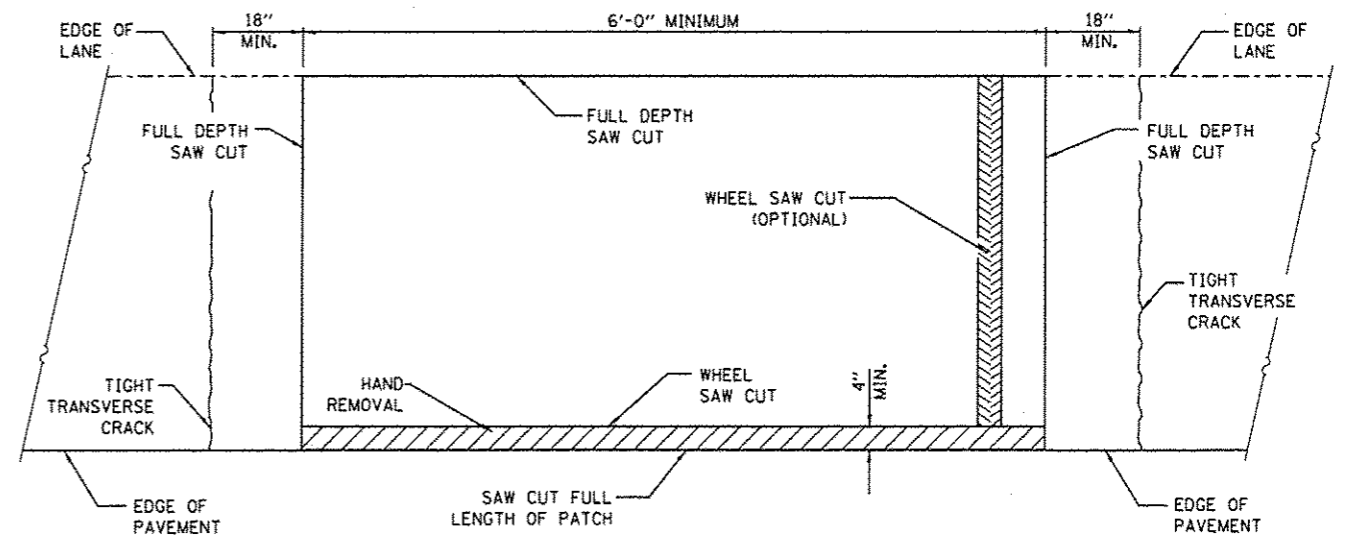


**TYPICAL PAVEMENT MARKINGS FOR EXIT RAMP TERMINALS**

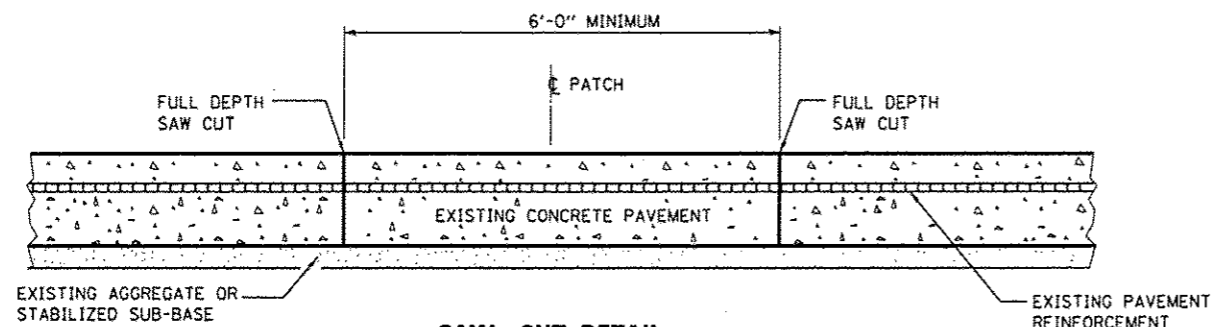
FILE NAME *	USER NAME * woodshankr1	DESIGNED - RW	REVISED -	<b>STATE OF ILLINOIS DEPARTMENT OF TRANSPORTATION</b>	<b>PAVEMENT MARKING</b>	F.A.I. RTE.	SECTION	COUNTY	TOTAL SHEETS	SHEET NO.	
c:\pwork\pvidot\woodshankr1\d0430231\366E80-shr-detail.dgn	366E80-shr-detail.dgn	DRAWN - RW	REVISED -			180	D3 PATCHING 2016-4	BUREAU	14	11	
MODEL NAME *	PLOT SCALE * 180.0000' / in.	CHECKED - EP	REVISED -			CONTRACT NO. 66E80					
	PLOT DATE * 4/1/2015	DATE - 3/19/2015	REVISED -			ILLINOIS FED. AID PROJECT					



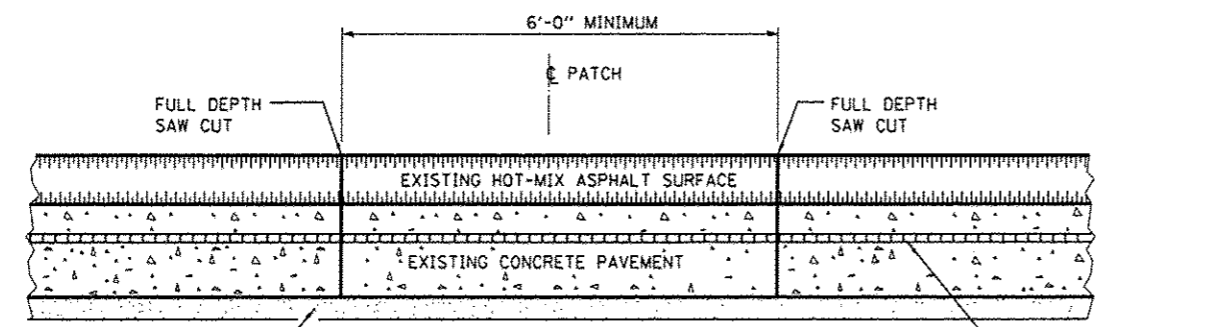
**PAVEMENT SAWING DETAIL**  
(HMA SHOULDER)



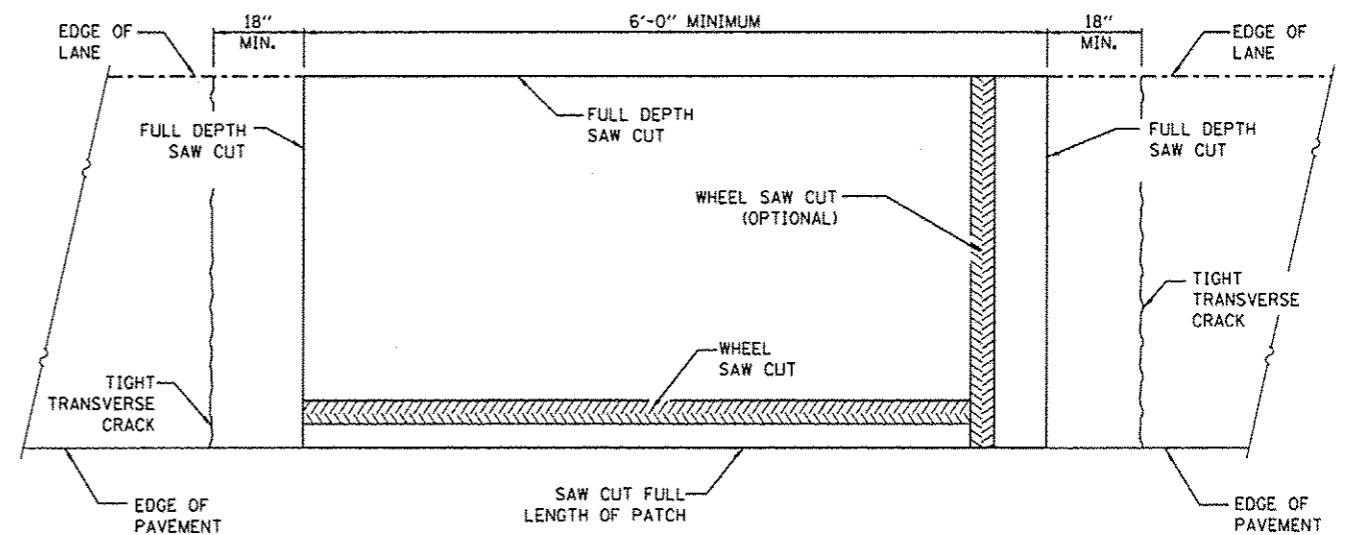
**PAVEMENT SAWING DETAIL**  
(PCC SHOULDER)



**SAW CUT DETAIL**  
WITHOUT HMA SURFACE



**SAW CUT DETAIL**  
WITH HMA SURFACE



**ALTERNATE SAWING DETAIL**  
(PCC SHOULDER)

**GENERAL NOTES**

WHEN PATCHING TWO ADJACENT LANES IN ONE OPERATION THE LONGITUDINAL JOINT SHALL BE LONGITUDINAL SAWED JOINT AS DETAILED ON STANDARD 42001, HOWEVER, THE GROOVE MAYBE EITHER PREFORMED OR SAWED.

SEE STANDARD 421001 FOR DETAILS OF PAVEMENT REINFORCEMENT.

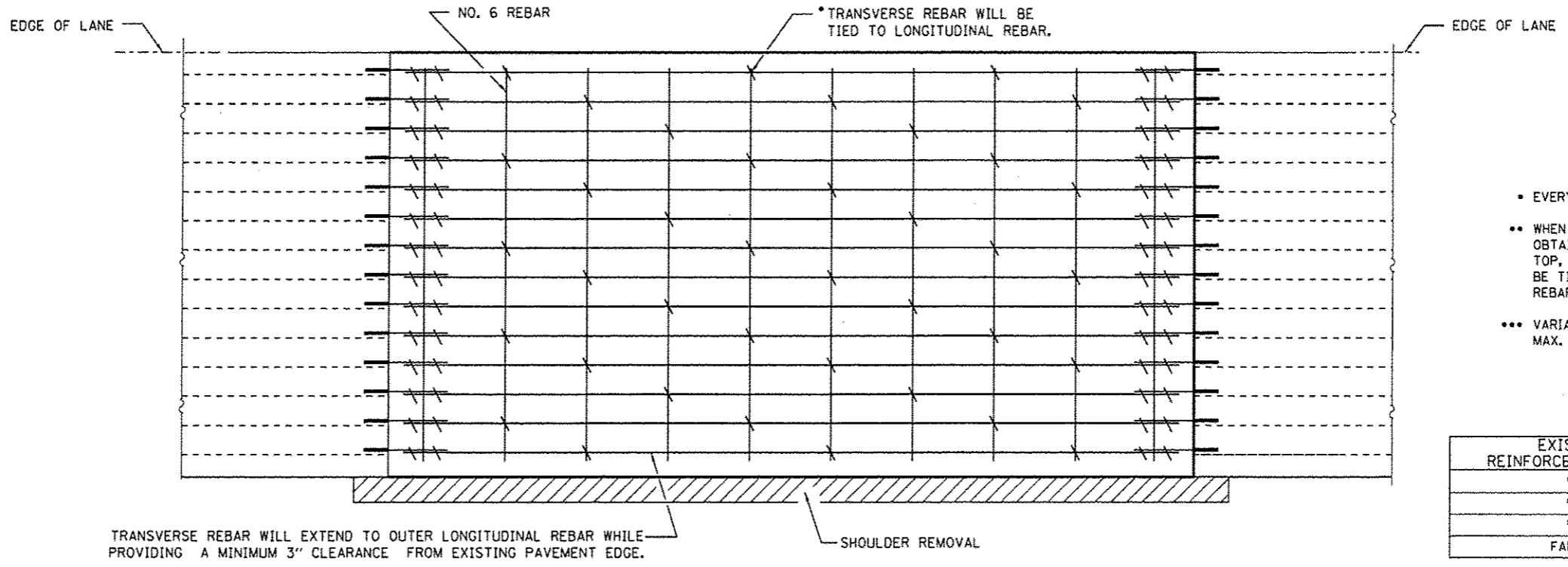
FILE NAME =	USER NAME = woodshankr1	DESIGNED - RW	REVISED -
c:\pwork\pvidot\woodshankr1\d0430231\366E80-sh1-detail.dgn		DRAWN - RW	REVISED -
	PLOT SCALE = 100.0000' / 1"	CHECKED - EP	REVISED -
#MODELNAME#	PLOT DATE = 4/1/2015	DATE = 3/19/2015	REVISED -

**STATE OF ILLINOIS**  
**DEPARTMENT OF TRANSPORTATION**

**CLASS A PATCHING DETAILS**

SCALE: \_\_\_\_\_ SHEET 1 OF 3 SHEETS STA. \_\_\_\_\_ TO STA. \_\_\_\_\_

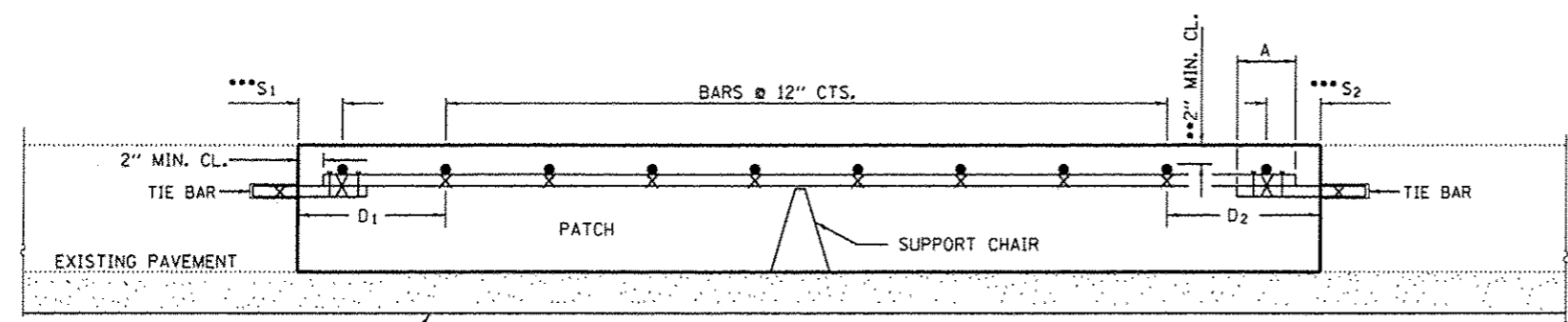
F.A.I. RTE.	SECTION	COUNTY	TOTAL SHEETS	SHEET NO.
180	D3 PATCHING 2016-4	BUREAU	14	12
CONTRACT NO. 66E80			ILLINOIS REG. AID PROJECT	



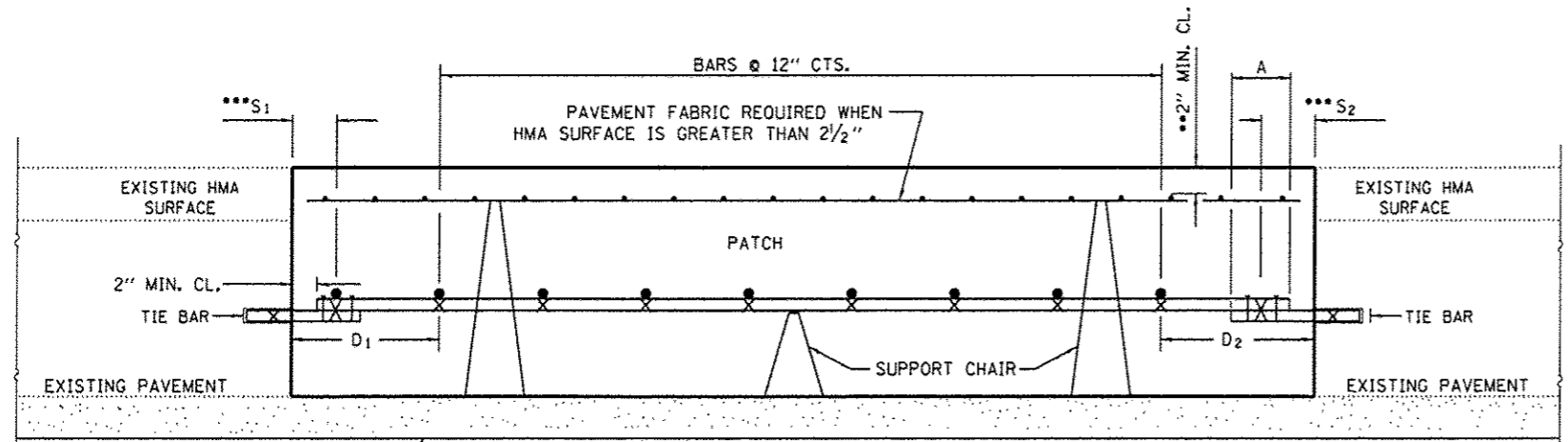
- EVERY 3rd INTERSECTION MUST BE TIED.
- WHEN THE MINIMUM CLEARANCE CANNOT BE OBTAINED WITH THE TRANSVERSE REBAR ON TOP, THEN THE TRANSVERSE REBAR SHALL BE TIED TO THE BOTTOM OF THE LONGITUDINAL REBAR.
- VARIABLES: WHERE  $S_1$  IS  $2\frac{1}{2}$ " MIN. AND 12" MAX.  $D_1 = 2(S_1)$

EXISTING REINFORCEMENT BARS	A (MIN.)
#5	18"
#6	21"
#7	24"
FABRIC	18"

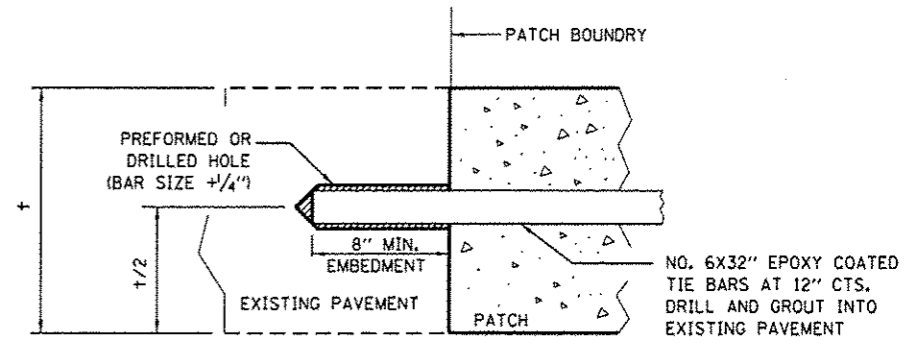
**PAVEMENT REINFORCEMENT DETAIL**



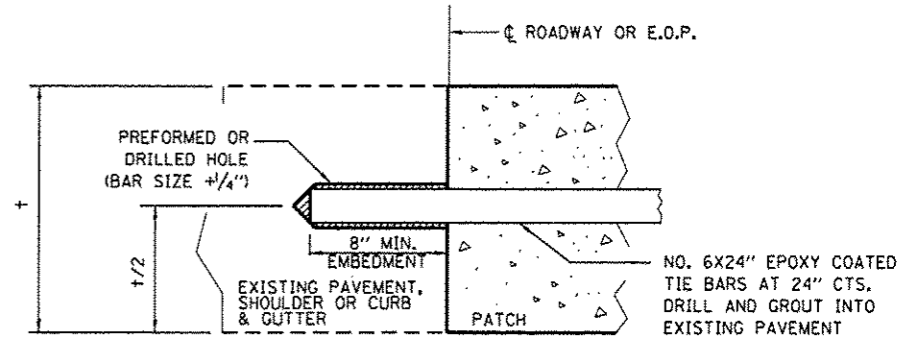
**PATCHING DETAIL**  
WITHOUT HMA SURFACE



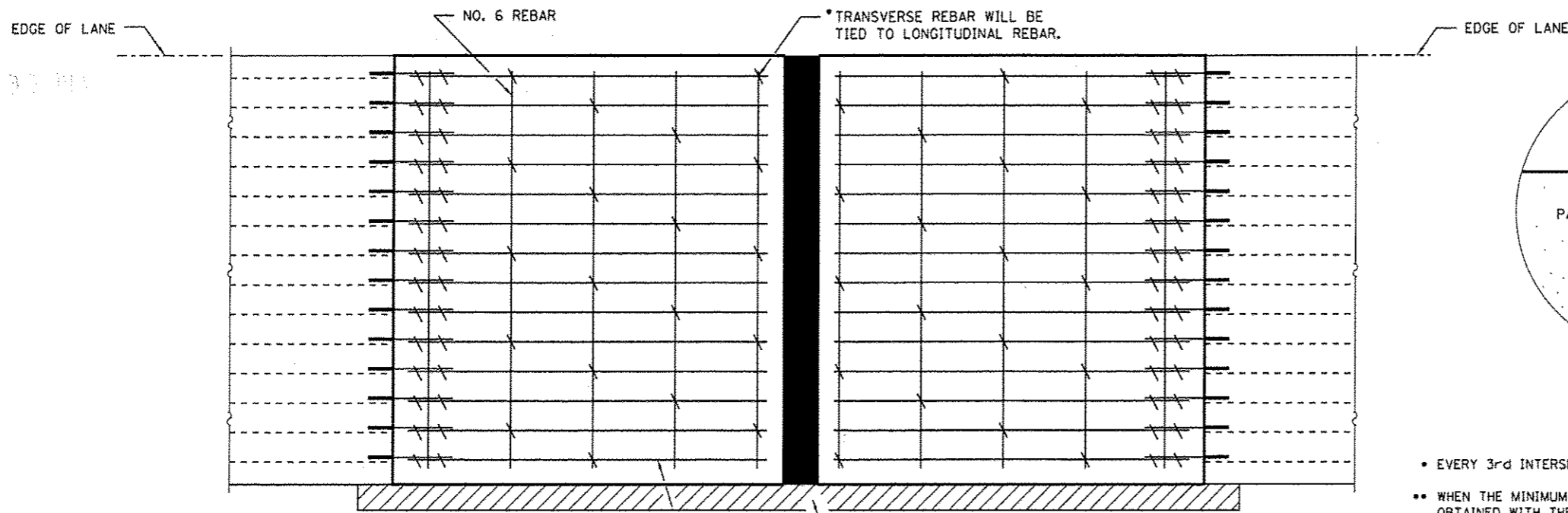
**PATCHING DETAIL**  
WITH HMA SURFACE



**TRANSVERSE CONSTRUCTION JOINT**  
(TIE BAR GROUTED IN PLACE)

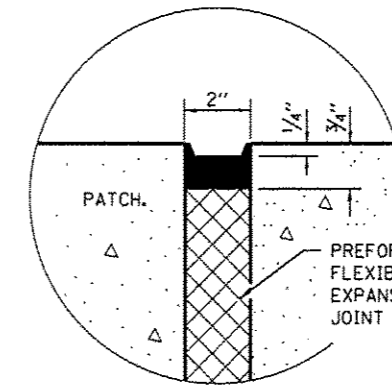


**LONGITUDINAL CONSTRUCTION JOINT**  
WHEN PATCH IS OVER 20' IN LENGTH  
(TIE BAR GROUTED IN PLACE)

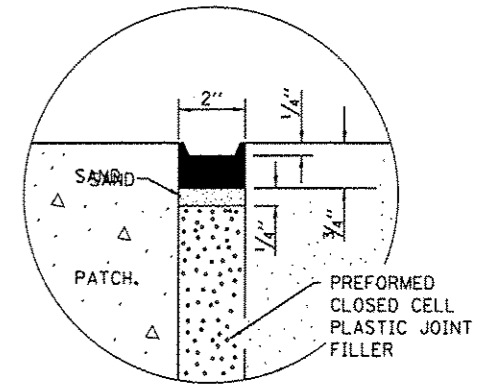


TRANSVERSE REBAR WILL EXTEND TO OUTER LONGITUDINAL REBAR WHILE PROVIDING A MINIMUM 3" CLEARANCE FROM EXISTING PAVEMENT EDGE.

SHOULDER REMOVAL



SEALING DETAIL

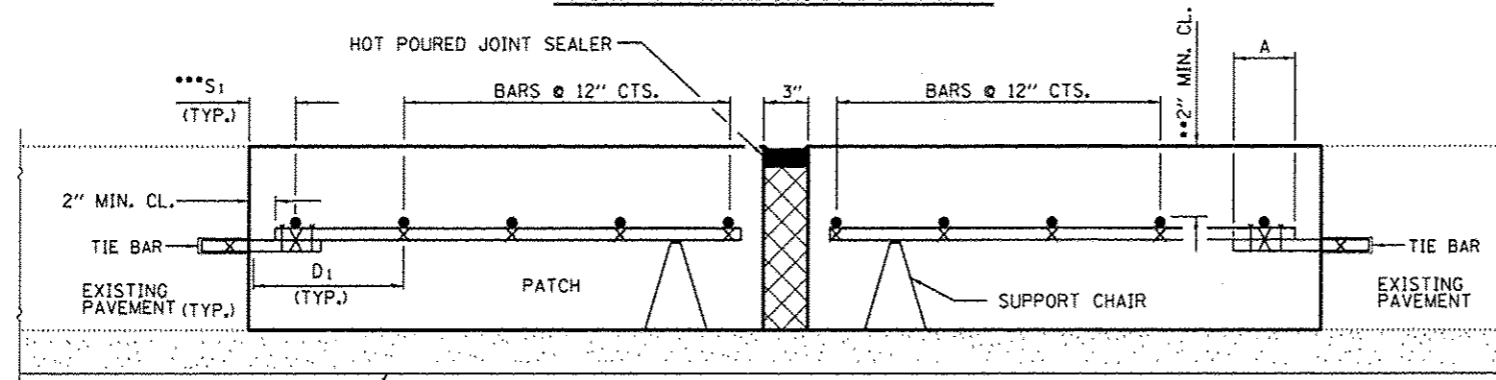


SEALING DETAIL

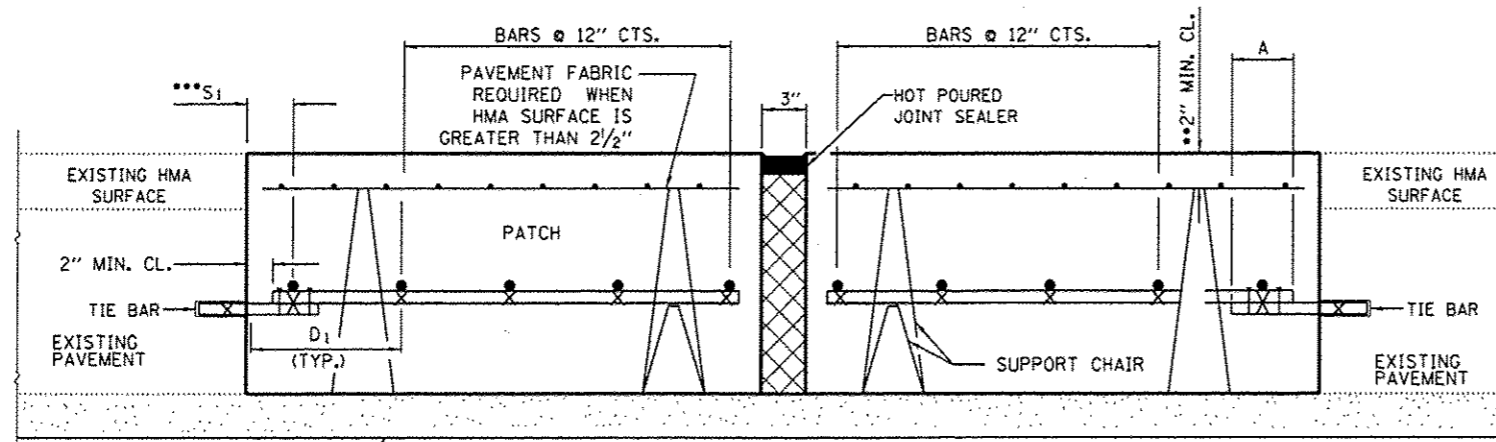
- EVERY 3rd INTERSECTION MUST BE TIED.
- WHEN THE MINIMUM CLEARANCE CANNOT BE OBTAINED WITH THE TRANSVERSE REBAR ON TOP, THEN THE TRANSVERSE REBAR SHALL BE TIED TO THE BOTTOM OF THE LONGITUDINAL REBAR.
- VARIABLES: WHERE  $S_1$  AND  $S_2$  ARE  $2\frac{1}{2}$ " MIN. AND 12" MAX.  $D_1 = 2(S_1)$  AND  $D_2 = 2(S_2)$ .

EXISTING REINFORCEMENT BARS	A (MIN.)	B (MIN.)
#6	4'-0"	22"
#7	4'-0"	26"
FABRIC	4'-0"	18"

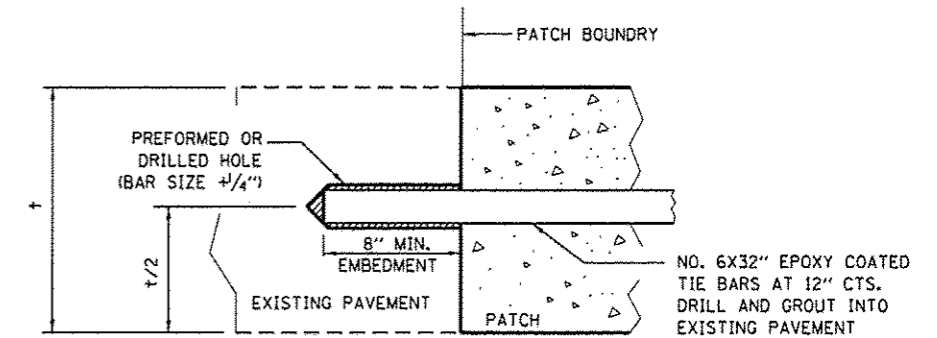
**PAVEMENT REINFORCEMENT DETAIL**



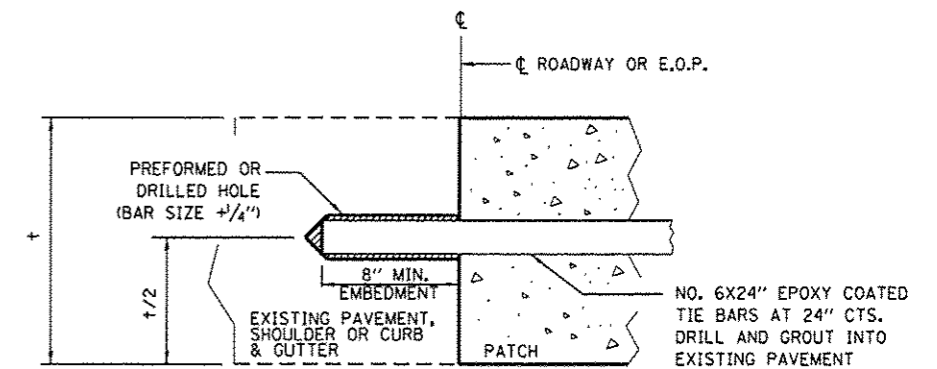
**PATCHING DETAIL - EXPANSION**  
WITHOUT HMA SURFACE



**PATCHING DETAIL - EXPANSION**  
WITH HMA SURFACE



**\* TRANSVERSE CONSTRUCTION JOINT**  
(TIE BAR GROUDED IN PLACE)



**LONGITUDINAL CONSTRUCTION JOINT**  
**WHEN PATCH IS OVER 20' IN LENGTH**  
(TIE BAR GROUDED IN PLACE)

FILE NAME *	USER NAME * woodshenkr1	DESIGNED - RW	REVISED -
c:\pwork\pvidot\woodshenkr1\d0430231\366E80-shr-detail.dgn		DRAWN - RW	REVISED -
PLOT SCALE * 1/80.0000' / 1"		CHECKED - EP	REVISED -
MODELNAME*		DATE - 3/19/2015	REVISED -

STATE OF ILLINOIS  
DEPARTMENT OF TRANSPORTATION

**CLASS A PATCHING DETAILS**

SCALE: \_\_\_\_\_ SHEET 3 OF 3 SHEETS STA. \_\_\_\_\_ TO STA. \_\_\_\_\_

F.A.I. RTE.	SECTION	COUNTY	TOTAL SHEETS	SHEET NO.
180	D3 PATCHING 2016-4	BUREAU	14	14
CONTRACT NO. 66E80				
ILLINOIS FED. AID PROJECT				