

STATE OF ILLINOIS
DEPARTMENT OF TRANSPORTATION
DIVISION OF HIGHWAYS
PROPOSED
HIGHWAY PLANS

F.A.I. F.A.P.	SECTION	COUNTY	TOTAL SHEETS	SHEET NO.
I-74 US 34 IL 110	48[26-30]I;72[1,3-5]I;21[I-2]	PEORIA/KNOX ILLINOIS	4	1
CONTRACT NO. 68C52				

INDEX OF SHEETS:

1. COVER SHEET
2. COMMITMENTS , LINE DIAGRAM
3. SUMMARY OF QUANTITIES
4. RECOVERABLE DELINEATORS DETAIL, SCHEDULE OF QUANTITIES

HIGHWAY STANDARDS:

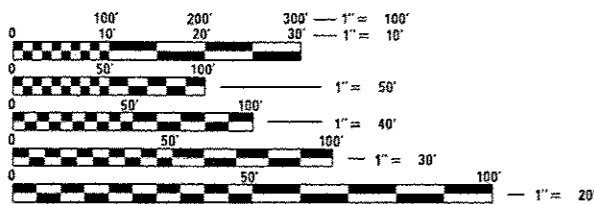
701101-04
 701901-04

I-74

ADT = 16200 (2013)
 HCV = 4167 (25.72%)
 SU = 554 (3.42%)
 MU = 3613 (22.3%)

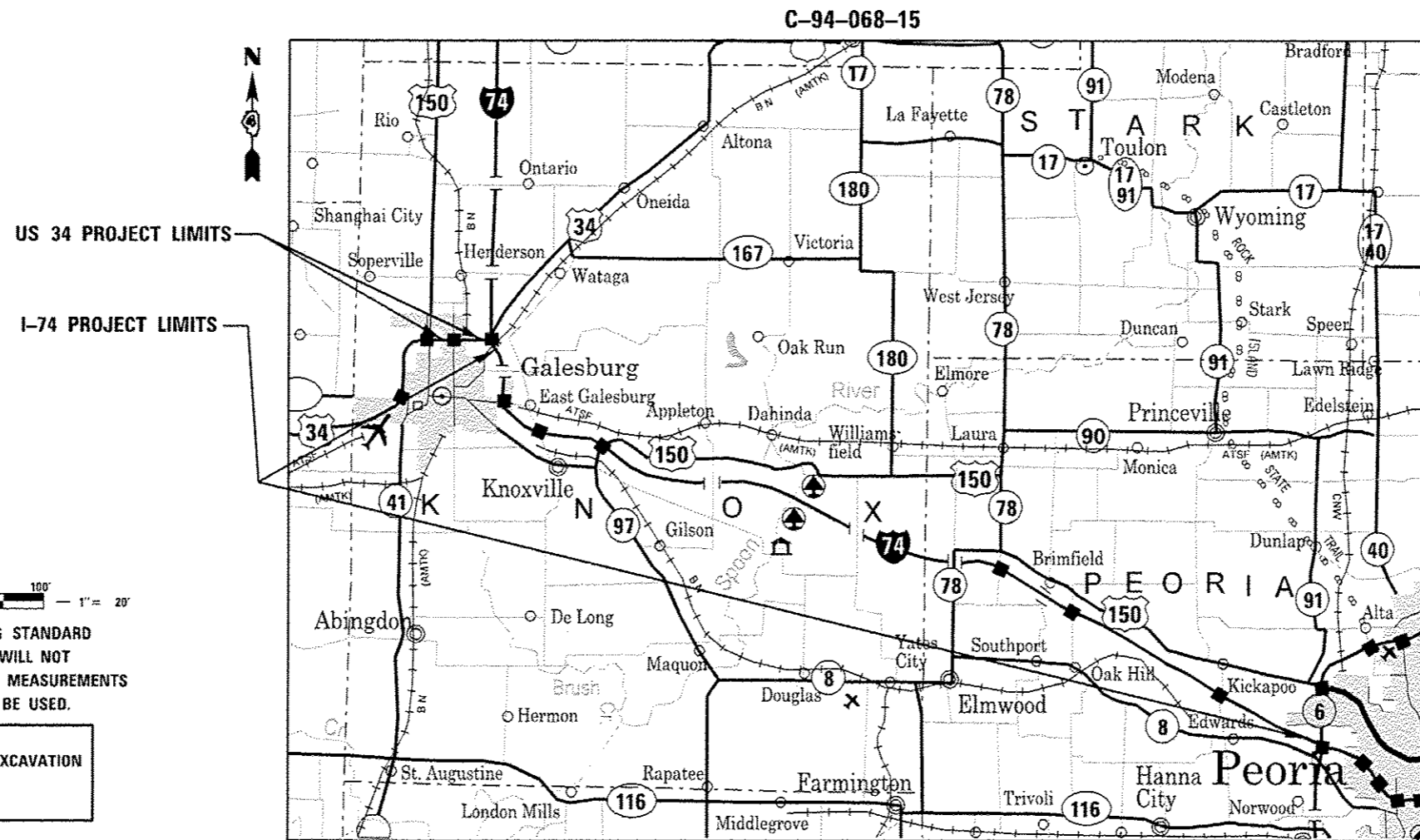
US 34

ADT = 14300 (2013)
 HCV = 2375 (16.61%)
 SU = 875 (6.12%)
 MU = 1500 (10.49%)



FULL SIZE PLANS HAVE BEEN PREPARED USING STANDARD ENGINEERING SCALES. REDUCED SIZED PLANS WILL NOT CONFORM TO STANDARD SCALES. IN MAKING MEASUREMENTS ON REDUCED PLANS, THE ABOVE SCALES MAY BE USED.

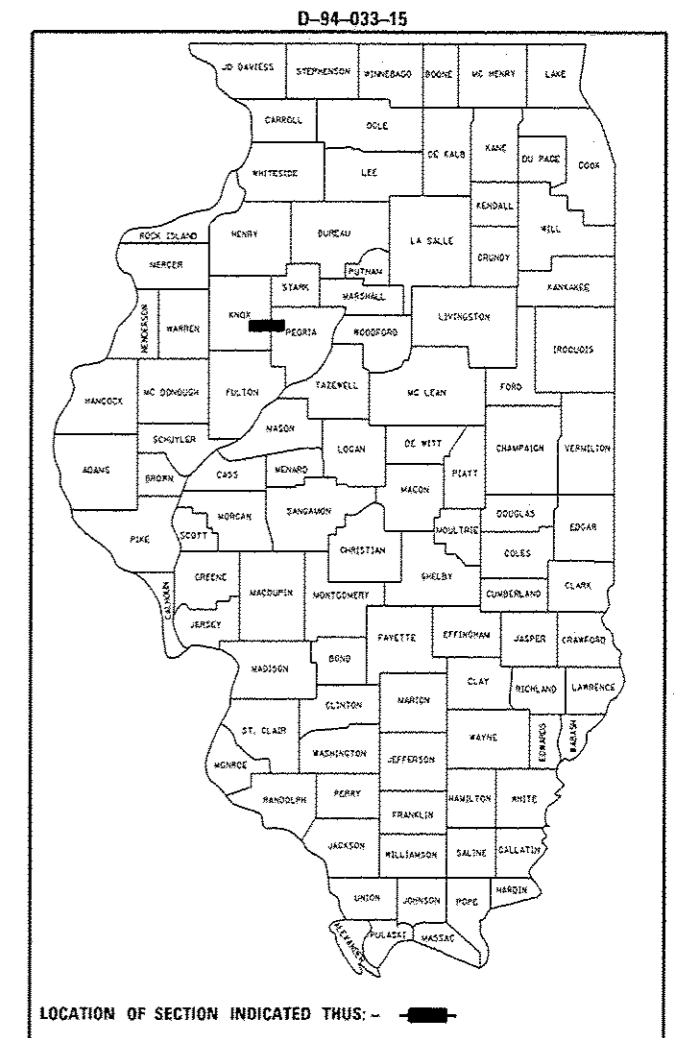
J.U.L.I.E.
 JOINT UTILITY LOCATION INFORMATION FOR EXCAVATION
 1-800-892-0123
 OR 811



C-94-068-15

PROJECT ENGINEER: CHRISTOPHER MAUSHARD 309-671-3453
PROJECT MANAGER: SOBHI LABABIDI / RAYMOND SAMARA 309-671-3460
CATALOG # 035259-00D
CONTRACT NO. 68C52

GROSS LENGTH = 224,822 FT. = 42.58 MILE
 NET LENGTH = 224,822 FT. = 42.58 MILE



PROJECT DESCRIPTION

INSTALLATION OF RECOVERABLE DELINEATORS ALONG OUTSIDE LANES OF I-74 FROM US 34 IN GALESBURG TO I-474 IN PEORIA AND ALONG OUTSIDE LANES OF US 34 FROM US 150 TO I-74 IN GALESBURG

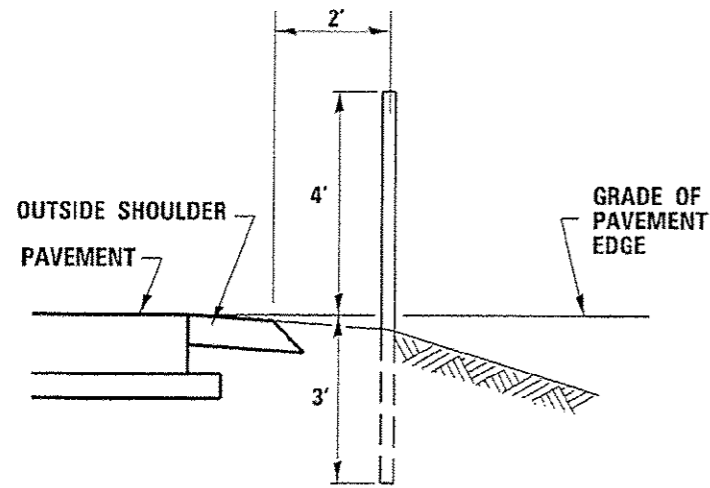
STATE OF ILLINOIS
 DEPARTMENT OF TRANSPORTATION
 DIVISION OF HIGHWAYS

SUBMITTED MARCH 13, 2015
Kenneth A. Gennett
 DEPUTY DIRECTOR OF HIGHWAYS, REGION ENGINEER

MAY 8, 2015
John D. Bonanzoni PE/IA
 ENGINEER OF DESIGN AND ENVIRONMENT

MAY 8, 2015
Omor Osman PE/IA
 DIRECTOR OF HIGHWAYS, CHIEF ENGINEER

**PRINTED BY THE AUTHORITY
 OF THE STATE OF ILLINOIS**



SECTIONAL VIEW

RECOVERABLE DELINEATORS								
LOCATION				LENGTH	SPACING	COLOR	DIRECTION	
				FT	FT		EAST BOUND	WEST BOUND
PEORIA COUNTY								
I-74 MAIN LINE								
	I-474	TO	IL 78	92,136	400	WHITE	230	230
	IL 78	TO	KNOX COUNTY LINE	5,280	200	WHITE	26	26
KNOX COUNTY								
	KNOX COUNTY LINE	TO	US 34 INTERCHANGE	116,846	200	WHITE	584	584
US 34 MAIN LINE								
	I-74	TO	US 150	10,560	200	WHITE	52	52
TOTAL FOR PEORIA COUNTY FOR EACH DIRECTION							256	256
TOTAL FOR PEORIA COUNTY							512	
TOTAL FOR KNOX COUNTY FOR EACH DIRECTION							636	636
TOTAL FOR KNOX COUNTY							1,272	
GRAND TOTAL							1,784	

CODE NO.	ITEM	UNIT	TOTAL QUANTITY	CONSTRUCTION CODE	
				PEORIA COUNTY	KNOX COUNTY
				90% STATE	90% FED.
				10% STATE	10% STATE
0021	0021				
67100100	MOBILIZATION	L SUM	1	0.4	0.6
X2600002	RECOVERABLE DELINEATOR	EACH	1784	512	1272

FILE NAME * Delineator Detail.dgn	USER NAME * lebabi01m	DESIGNED -	REVISED -
		DRAWN -	REVISED -
		CHECKED -	REVISED -
		DATE -	REVISED -

**STATE OF ILLINOIS
DEPARTMENT OF TRANSPORTATION**

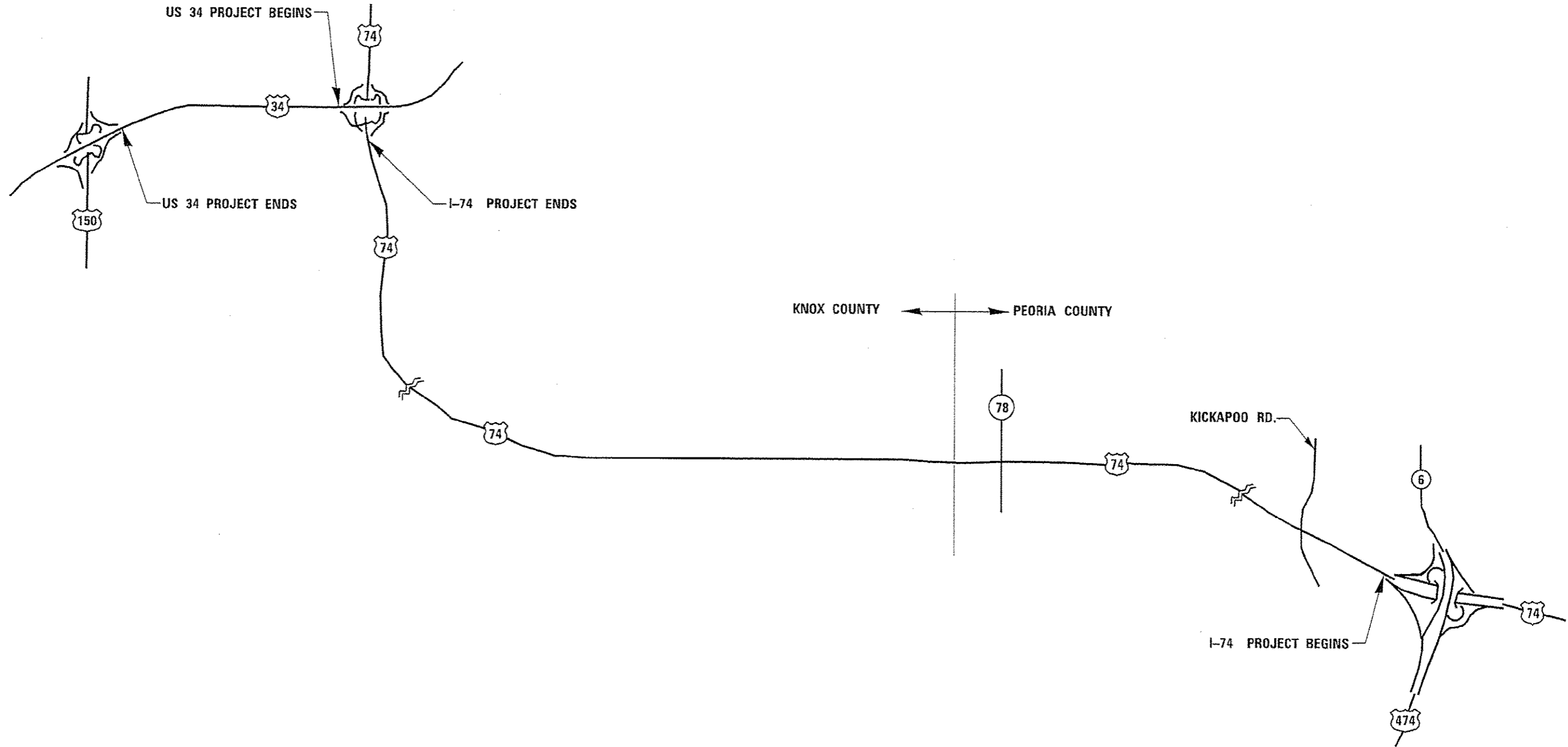
SUMMARY OF QUANTITIES

F.A.P. 1-14 US 34 R 110	SECTION	COUNTY	TOTAL SHEETS	SHEET NO.
	88(25-30)(1,2)(1,3-5)(1,2)(1-2)	PEORIA/KNOX	4	3
	CONTRACT NO. 68C52			
ILLINOIS FED. AID PROJECT				

COMMITMENTS:

Commitments are not to be altered without the written approval of all parties to which the commitment was made.
NO COMMITMENTS HAVE BEEN MADE FOR THIS PROJECT

LINE DIAGRAM:



FILE NAME * Deliminator Detail.dgn	USER NAME * 100000121m	DESIGNED -	REVISED -	STATE OF ILLINOIS DEPARTMENT OF TRANSPORTATION	COMMITMENTS LINE DIAGRAM	F.A.I. E.A.P.	SECTION	COUNTY	TOTAL SHEETS	SHEET NO.
Default	PLOT SCALE * 1/8"=1'-0"	DRAWN -	REVISED -			I-74	49(26-30)1:72(1,3-5)1:21(1-2)	PEORIA/KNOX	4	4
Default	PLOT DATE * 3/11/2015	CHECKED -	REVISED -			US 34				
		DATE -	REVISED -			IL 110				CONTRACT NO. 68C52
SCALE: SHEET OF SHEETS STA. TO STA.						ILLINOIS FED. AID PROJECT				