

STATE OF ILLINOIS
DEPARTMENT OF TRANSPORTATION
DIVISION OF HIGHWAYS

**PROPOSED
HIGHWAY PLANS**

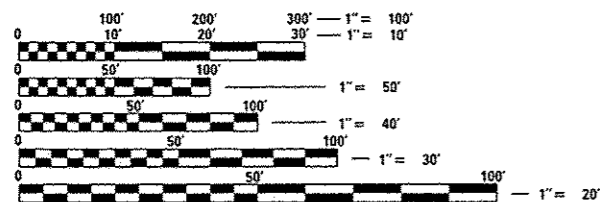
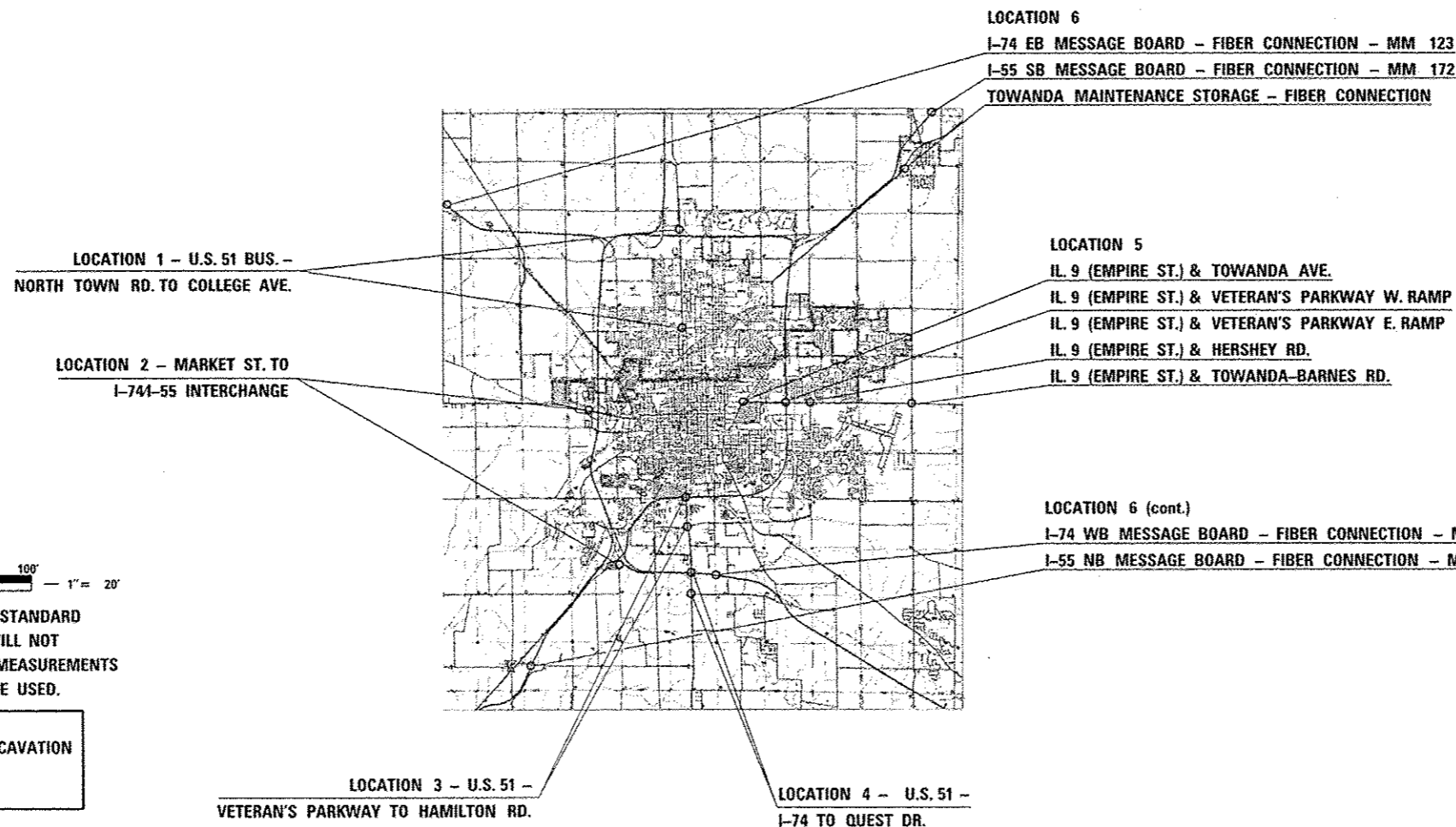
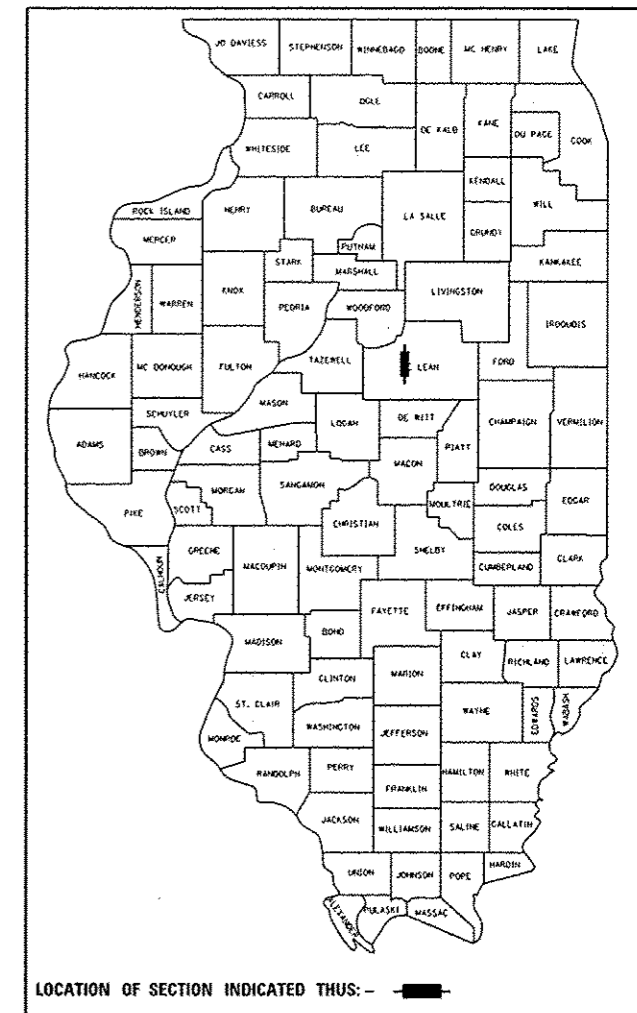
VARIOUS ROUTES
SECTION FY2015 ITS-2
ITS AND SURVEILLANCE
MCLEAN COUNTY

C-95-023-14

FOR INDEX OF SHEETS, SEE SHEET NO. 2

F.A. RTE.	SECTION	COUNTY	TOTAL SHEETS	SHEET NO.
VAR.	FY2015 ITS-2	MCLEAN	38	1
ILLINOIS			CONTRACT NO. 70A68	

▲ *36+2 = 38 TOTAL SHEETS
D-95-023-14



FULL SIZE PLANS HAVE BEEN PREPARED USING STANDARD ENGINEERING SCALES. REDUCED SIZED PLANS WILL NOT CONFORM TO STANDARD SCALES. IN MAKING MEASUREMENTS ON REDUCED PLANS, THE ABOVE SCALES MAY BE USED.

J.U.L.I.E.
JOINT UTILITY LOCATION INFORMATION FOR EXCAVATION
1-800-892-0123
OR 811

PROJECT ENGINEER: JEFF ALLEN
PROJECT MANAGER: ROGER BIGGS

CONTRACT NO. 70A68

CITY OF BLOOMINGTON / NORMAL

▲ REVISED 6-1-15

STATE OF ILLINOIS
DEPARTMENT OF TRANSPORTATION
DIVISION OF HIGHWAYS

SUBMITTED March 20, 2015

David A. Jarrett
DEPUTY DIRECTOR OF HIGHWAYS, REGION ENGINEER

May 8, 2015
John D. Baranzelli PE
ENGINEER OF DESIGN AND ENVIRONMENT

May 8, 2015
Emet Osman PE
DIRECTOR OF HIGHWAYS, CHIEF ENGINEER

PRINTED BY THE AUTHORITY
OF THE STATE OF ILLINOIS

GENERAL NOTES

- G.N. - 100 ENGLISH UNITS OF MEASUREMENT SHALL GOVERN OVER AND SUPERSEDE ANY METRIC UNITS SHOWN IN THIS CONTRACT. WHERE INCLUDED, METRIC UNITS ARE FOR INFORMATION ONLY.
- G.N.-100A ELECTRONIC FILES AND/OR ELECTRONIC SURVEY INFORMATION INCLUDING CADD FILES WILL NOT BE AVAILABLE TO THE CONTRACTOR.
- G.N.- 814 THE PROPOSED HANDHOLE LOCATIONS SHALL BE LOCATED BY THE ENGINEER.

HIGHWAY STANDARDS

Standard	Description
000001-06	STANDARD SYMBOLS, ABBREVIATIONS AND PATTERNS
001006	DECIMAL OF AN INCH AND OF A FOOT
701006-05	OFF-RD OPERATIONS, 2L, 2W, 15' (4.5 m) TO 24" (600mm) FROM PAVEMENT EDGE
701101-04	OFF-RD OPERATIONS, MULTILANE, 15'(4.5 m) TO 24" (600 mm) FROM PAVEMENT EDGE
701106-02	OFF-RD OPERATIONS, MULTILANE, MORE THAN 15' (4.5 m) AWAY
701400-08	APPROACH TO LANE CLOSURE, FREEWAY / EXPRESSWAY
701401-09	LANE CLOSURE, FREEWAY / EXPRESSWAY
701406-09	LANE CLOSURE, FREEWAY / EXPRESSWAY - DAY OPERATION ONLY
701428	TRAFFIC CONTROL SETUP AND REMOVAL - FREEWAY / EXPRESSWAY
701456-03	PARTIAL EXIT RAMP CLOSURE - FREEWAY / EXPRESSWAY
701901-04	TRAFFIC CONTROL DEVICES
814001-03	HANDHOLES
878001-10	CONCRETE FOUNDATION DETAILS
701456-03	PARTIAL EXIT RAMP CLOSURE FREEWAY / EXPRESSWAY

INDEX OF SHEETS

- 1 COVER SHEET
- 2 INDEX OF SHEETS, HIGHWAY STANDARDS, & GENERAL NOTES
- 3-4 SUMMARY OF QUANTITIES
- LOCATION 1
- 5 U. S. 51 (MAIN ST.) & COLLEGE AVE.
- 5-9 U. S. 51 (MAIN ST.) - RAAB RD. TO NORTHTOWN RD.
- LOCATION 2
- 10-18 I-74/55 - I-74/55 SW INTERCHANGE TO MARKET ST.
- 19 VETERAN'S PARKWAY AT BLOOMINGTON MAINTENANCE STORAGE
- 20 VETERAN'S PARKWAY & MORRIS AVE.
- LOCATION 3
- 21-27 U. S. 51 (MAIN ST.) - VETERAN'S PARWAY TO HAMILTON RD.
- LOCATION 4
- 28-29 U. S. 51 (MAIN ST.) - QUEST DR. (IDOT D5 SATELLITE OFFICE) TO I-74
- LOCATION 5
- 30 IL. 9 (EMPIRE ST.) & TOWANDA ST.
IL. 9 (EMPIRE ST.) & VETERAN'S PKWY (E & W RAMPS)
IL. 9 (EMPIRE ST.) & HERSHEY RD.
IL. 9 (EMPIRE ST.) & TOWANDA-BARNES RD.
- LOCATION 6
- 31 I-74 WB MM 135.9 OVERHEAD MESSAGE BOARD FIBER CONNECTION
- 32 I-55 NB MM 153.7 OVERHEAD MESSAGE BOARD FIBER CONNECTION
- 33 I-55 SB MM 172.0 OVERHEAD MESSAGE BOARD FIBER CONNECTION
- 34 I-74 EB MM 123.0 OVERHEAD MESSAGE BOARD FIBER CONNECTION
- 35 TOWANDA MAINTENANCE STORAGE FIBER CONNECTION
- 36-36B DETAILS**

▲ REVISED SHEET 6-1-15

FILE NAME :	USER NAME : biggard	DESIGNED - ROB	REVISED -	STATE OF ILLINOIS DEPARTMENT OF TRANSPORTATION	GENERAL NOTES, STANDARD IN THE PLANS INDEX OF SHEETS			F.A. RTE.	SECTION	COUNTY	TOTAL SHEETS	SHEET NO.
01:\pw\work\pudot\biggard\d0425149\70A6B	Bloomington ITS working file.dgn	DRAWN - ROB	REVISED -		VAR	FY2015 ITS-2	MCLEAN	36	2			
#MODEL NAME#	PLOT SCALE = 1/574,8031" / m	CHECKED -	REVISED -		SCALE: 20	SHEET	OF	SHEETS	STA.	TO	STA.	CONTRACT NO. 70A6B
	PLOT DATE = 5/7/2015	DATE -	REVISED -									ILLINOIS FED. AID PROJECT

SUMMARY OF QUANTITIES

LOCATION OF WORK:

MCLEAN MCLEAN
VARIOUS VARIOUS
ROUTES ROUTES
BLOOMINGTON BLOOMINGTON
NORMAL NORMAL
100% STATE 100% STATE

CONSTRUCTION TYPE CODE:

0021 0021

CODE NO	ITEM	UNIT	TOTAL QUANTITY	URBAN QUANTITY	RURAL QUANTITY
44200608	CLASS A PATCHES, TYPE 1, 13 INCH	SQ YD	2.2	1.6	.6
67100100	MOBILIZATION	L SUM	1.0	.8	.4
50102400	CONCRETE REMOVAL	CU YD	1.8	1.4	.4
70100700	TRAFFIC CONTROL AND PROTECTION, STANDARD 701406	L SUM	1.0	.6	.4
70100800	TRAFFIC CONTROL AND PROTECTION, STANDARD 701401	L SUM	1.0	.6	.4
70100825	TRAFFIC CONTROL AND PROTECTION, STANDARD 701456	L SUM	1.0	1.0	
81028350	UNDERGROUND CONDUIT, PVC, 2" DIA.	FOOT	30,667.0	17,584.0	13,083.0
81028360	UNDERGROUND CONDUIT, PVC, 2 1/2" DIA.	FOOT	798.0	798.0	
81300830	JUNCTION BOX, STAINLESS STEEL, ATTACHED TO STRUCTURE, 18" X 18" X 8"	EACH	7.0	2.0	5.0
81400100	HANDHOLE	EACH	38.0	22.0	16.0
87100140	FIBER OPTIC CABLE IN CONDUIT, NO. 62.5/125, 12F	FOOT	22,029.0	11,014.0	11,015.0
82700100	TRANSFORMER, GENERAL PURPOSE	EACH	1.0		1.0
87300901	ELECTRIC CABLE IN CONDUIT, TRACER, NO. 12 1C	FOOT	27,587.0	16,552.0	11,035.0
87301125	ELECTRIC CABLE IN CONDUIT, SIGNAL NO. 12 3C	FOOT	2,534.0	1,520.0	1,014.0
87800415	CONCRETE FOUNDATION, TYPE E 36-INCH DIAMETER	FOOT	32.0	16.0	16.0
87900200	DRILL EXISTING HANDHOLE	EACH	18.0	11.0	7.0

19

⚠ REVISÉD 6-1-15

FILE NAME #	USER NAME #	DESIGNED -	REVISED -	STATE OF ILLINOIS DEPARTMENT OF TRANSPORTATION	SUMMARY OF QUANTITIES	F.A. RTE.	SECTION	COUNTY	TOTAL SHEETS	SHEET NO.
pw\NLSB4EB10INTEG.illinois.gov\PW100T\0	umans\DOT Office\Ostricot DP\Projects\057	DRAWN	REVISED			VAR.	FY2015 ITS-2	MCLEAN	36	3
MODELNAME#	PLOT DATE = 3/28/2015	CHECKED -	REVISED -			SCALE:	SHEET OF SHEETS	STA. TO STA.	ILLINOIS FED. AID PROJECT CONTRACT NO. 70A68	

SUMMARY OF QUANTITIES

LOCATION OF WORK:

MCLEAN VARIOUS ROUTES BLOOMINGTON NORMAL 100% STATE	MCLEAN VARIOUS ROUTES BLOOMINGTON NORMAL 100% STATE
--	--

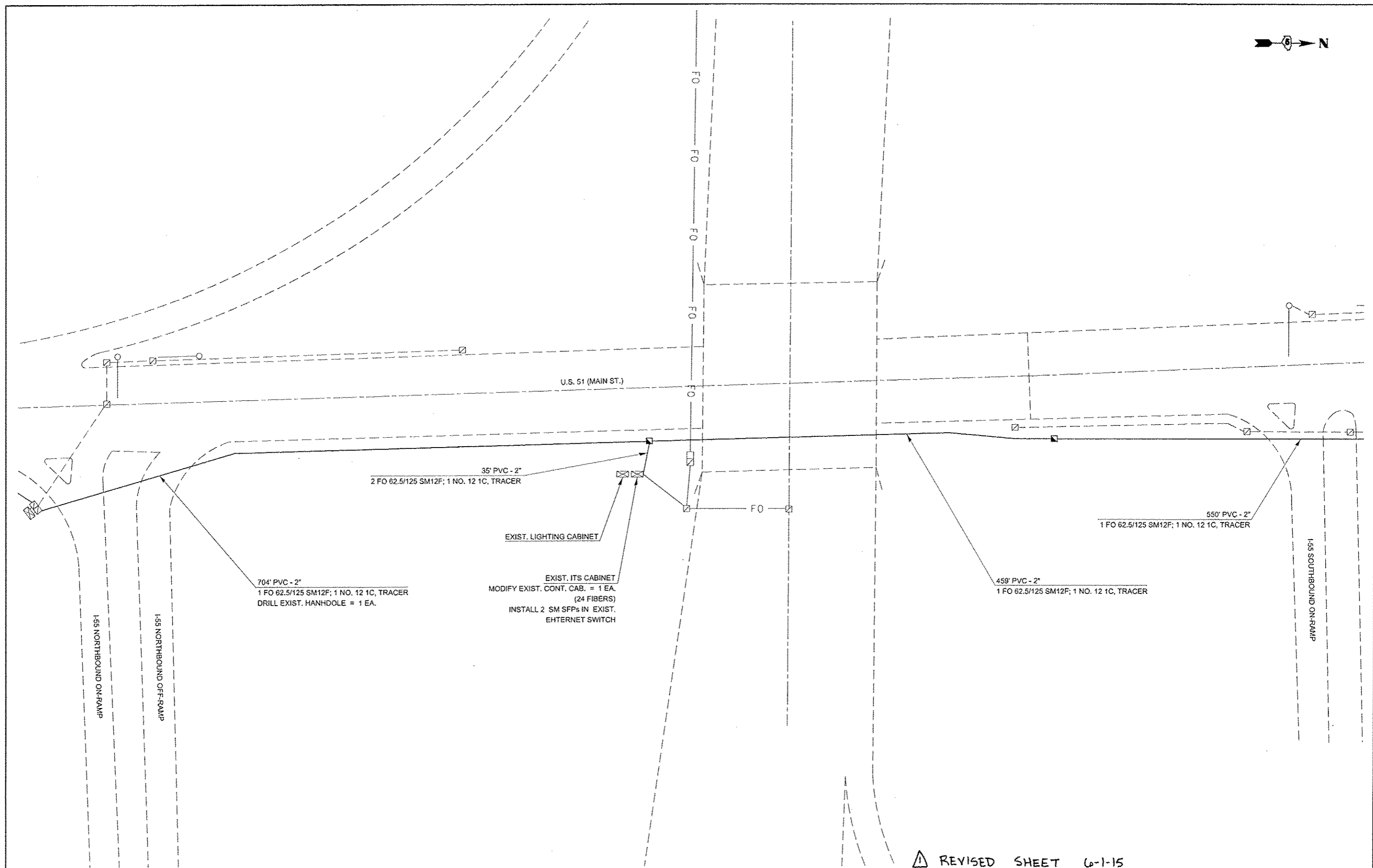
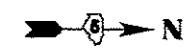
CONSTRUCTION TYPE CODE:

0021	0021
------	------

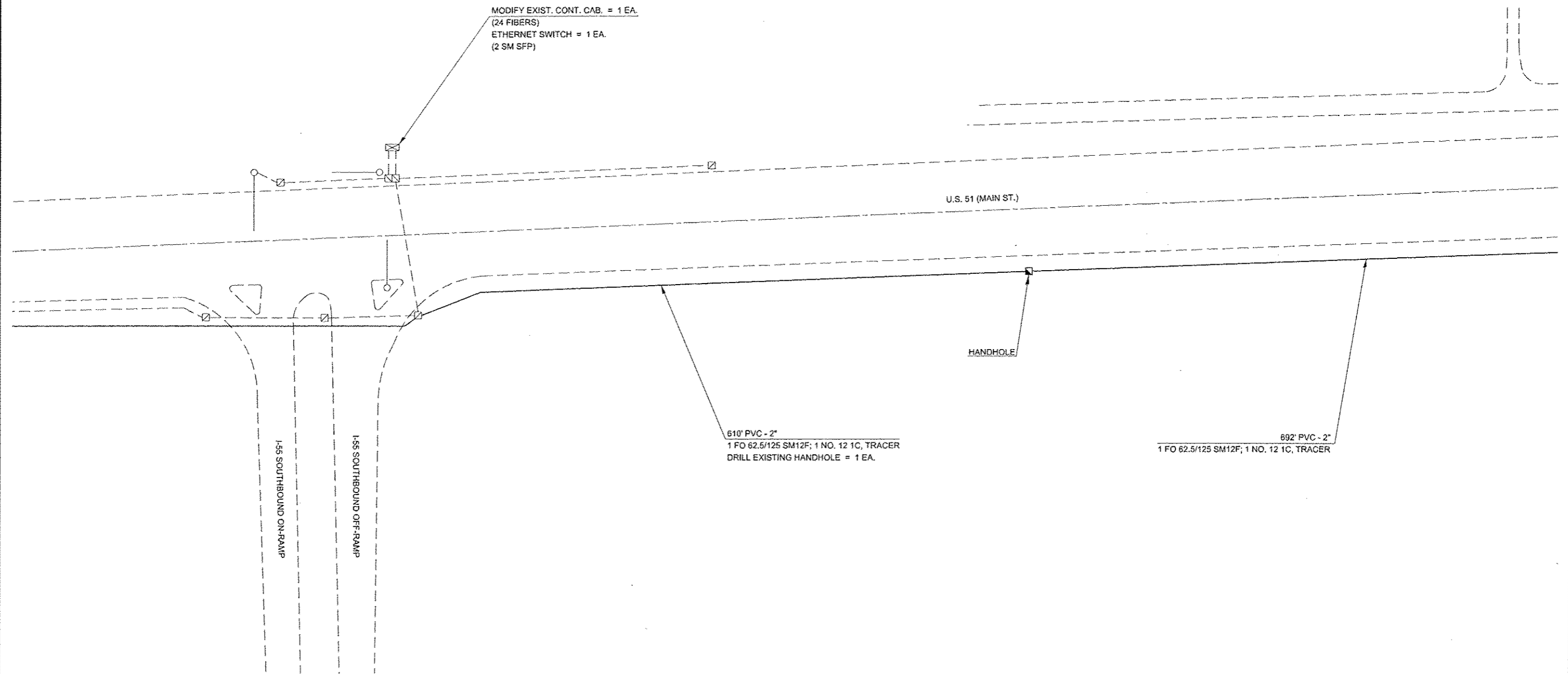
CODE NO	ITEM	UNIT	TOTAL QUANTITY	URBAN QUANTITY	RURAL QUANTITY
89502210	MODIFY EXISTING CONTROLLER CABINET	EACH	15.0	9.0	6.0
X0323906	CAMERA POLE, 45 FT	EACH	4.0	2.0	2.0
X0324597	CLOSED CIRCUIT TELEVISION CABINET	EACH	4.0	2.0	2.0
X0325077	FIBER OPTIC UTILITY MARKER	EACH	50.0	30.0	20.0
X0326266	ETHERNET SWITCH	EACH	25.0	15.0	10.0
X0326905	CLOSED CIRCUIT TELEVISION DOME CAMERA, IP BASED	EACH	7.0	5.0	2.0
X0323917	CABINET, MODEL 334	EACH	1.0	1.0	.0
X7010410	SPEED DISPLAY TRAILER	CAL MO	0.5	0.4	0.1
X8570215	FULL-ACTUATED CONTROLLER IN EXISTING CABINET	EACH	9.0	5.0	4.0
X8710031	FIBER OPTIC CABLE 36 FIBERS, SINGLE MODE	FOOT	19,182.0	14,387.0	4,795.0
X8710035	FIBER OPTIC CABLE 96 FIBERS, SINGLE MODE	FOOT	20,362.0	15,272.0	5,090.0
X8710054	FIBER OPTIC TERMINATION PANEL, 12 F OR 24F	EACH	3.0	2.0	1.0
XX007787	CLASS 61 CONCRETE	CU YD	1.8	1.4	.4
Z0010688	CAMERA MOUNTING ASSEMBLY	EACH	2.0	2.0	.0
X8780105	CONCRETE FOUNDATION (SPECIAL)	EACH	1.0	1.0	.0
Z0013798	CONSTRUCTION LAYOUT	L SUM	1.0	.6	.4
Z0033052	COMMUNICATIONS VAULT	EACH	3.0	2.0	1.0

⚠ REVISSED 6-1-15

FILE NAME #	USER NAME # p1ersonar	DESIGNED -	REVISED -	STATE OF ILLINOIS DEPARTMENT OF TRANSPORTATION	SUMMARY OF QUANTITIES	F.A. RTE.	SECTION	COUNTY	TOTAL SHEETS	SHEET NO.
g:\1\28463\INTG\Illinois.gov\PI007\00	Documents\IGDT Offices\Districts 5\Projects\007	DRAWN Data\Design\70A6B Bloomington IT	REVISED file			VAR	FY2015 ITS-2	MCLEAN	36	4
MODELNAME#	PLOT SCALE = 48,000 1/4 in.	CHECKED -	REVISED -		SCALE:				CONTRACT NO. 70A6B	
	PLOT DATE = 3/28/2015	DATE -	REVISED -		SHEET	OF	SHEETS	STA.	ILLINOIS FED. AID PROJECT	

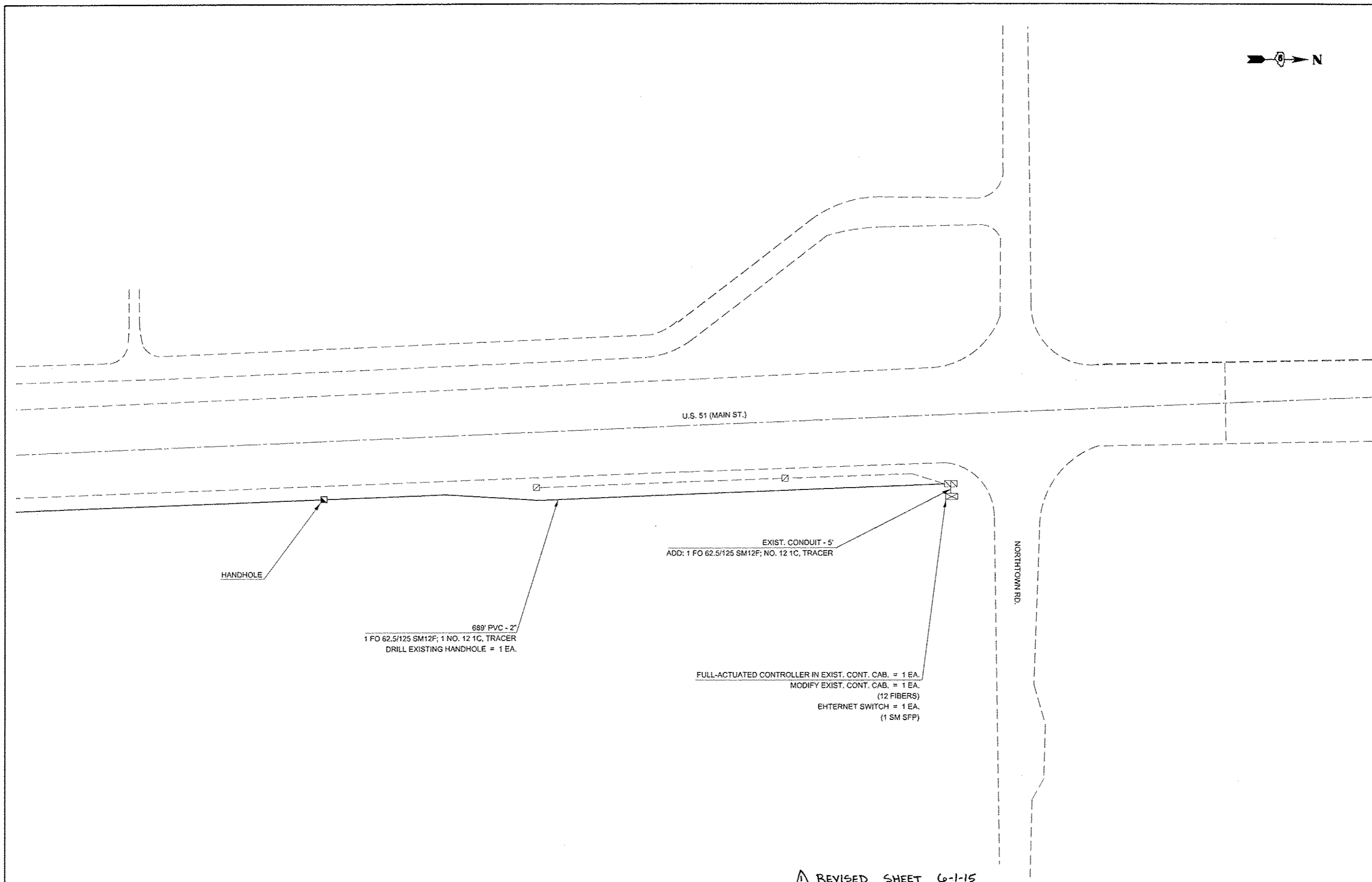


FILE NAME :	USER NAME :	DESIGNED :	REVISED :	STATE OF ILLINOIS DEPARTMENT OF TRANSPORTATION	PLAN SHEET - LOCATION 1			F.A. RTE.	SECTION	COUNTY	TOTAL SHEETS	SHEET NO.	
c:\pwwork\pwwork\biggared\0425949\70A68	Bloomington ITS working file.dgn	DRAWN :	REVISED :					VAR	FY2015 ITS-2	MCLEAN	36	7	
#MODELNAME#	PLOT SCALE = 3937.6879 1/4"	CHECKED :	REVISED :					SCALE: SHEET OF SHEETS STA. TO STA.			CONTRACT NO. 70A68		
	PLOT DATE = 5/7/2015	DATE :	REVISED :					ILLINOIS FED. AID PROJECT					



△ REVISED SHEET 6-1-15

FILE NAME * c:\pwwork\pedit\biggared\0425949\70A68	USER NAME * biggared	DESIGNED -	REVISED -	STATE OF ILLINOIS DEPARTMENT OF TRANSPORTATION	PLAN SHEET - LOCATION 1		F.A. RTE.	SECTION	COUNTY	TOTAL SHEETS	SHEET NO.	
	Bloomington ITS working (file.dgn)	DRAWN -	REVISED -				VAR	FY2015 ITS-2	MCLEAN	36	8	
PLOT SCALE * 3937.0079 1/2" = 1'	CHECKED -	REVISED -	SCALE:		SHEET	OF	SHEETS	STA.	TO	STA.	CONTRACT NO. 70A68	
PLOT DATE * 5/7/2018	DATE -	REVISED -	ILLINOIS FED. AID PROJECT									



▲ REVISED SHEET 6-1-15

FILE NAME *	USER NAME *	DESIGNED -	REVISED -
c:\pwwork\pwwork\biggared\10425949\70A68	biggared	DRAWN -	REVISED -
	Bloomington ITS working file.dgn	CHECKED -	REVISED -
	PLOT SCALE = 3937.8979' / 1" =	DATE -	REVISED -
#MODELNAME*	PLOT DATE = 5/7/2015		

**STATE OF ILLINOIS
DEPARTMENT OF TRANSPORTATION**

PLAN SHEET - LOCATION 1

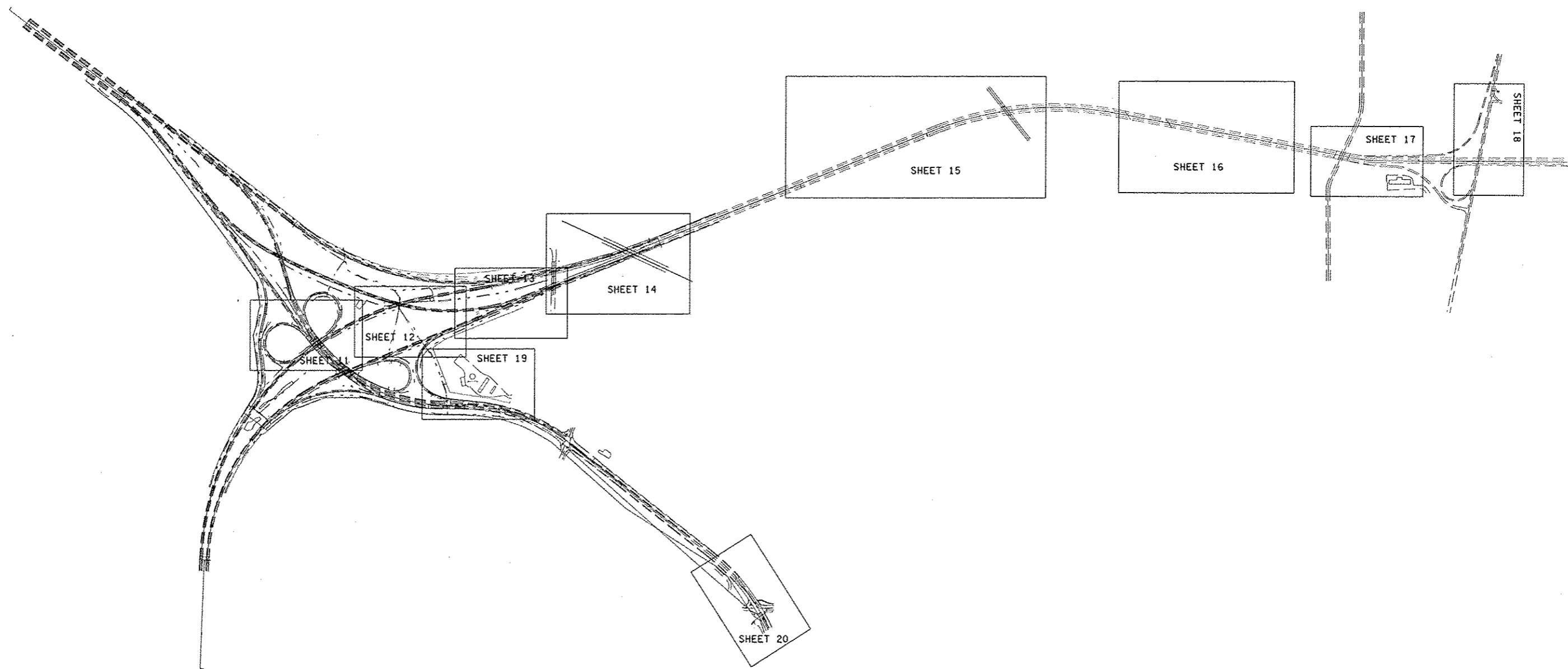
SCALE: SHEET OF SHEETS STA. TO STA.

F.A. RTE.	SECTION	COUNTY	TOTAL SHEETS	SHEET NO.
VAR	FY2015 ITS-2	MCLEAN	36	9
ILLINOIS FED. AID PROJECT			CONTRACT NO. 70A68	

LOCATION 2

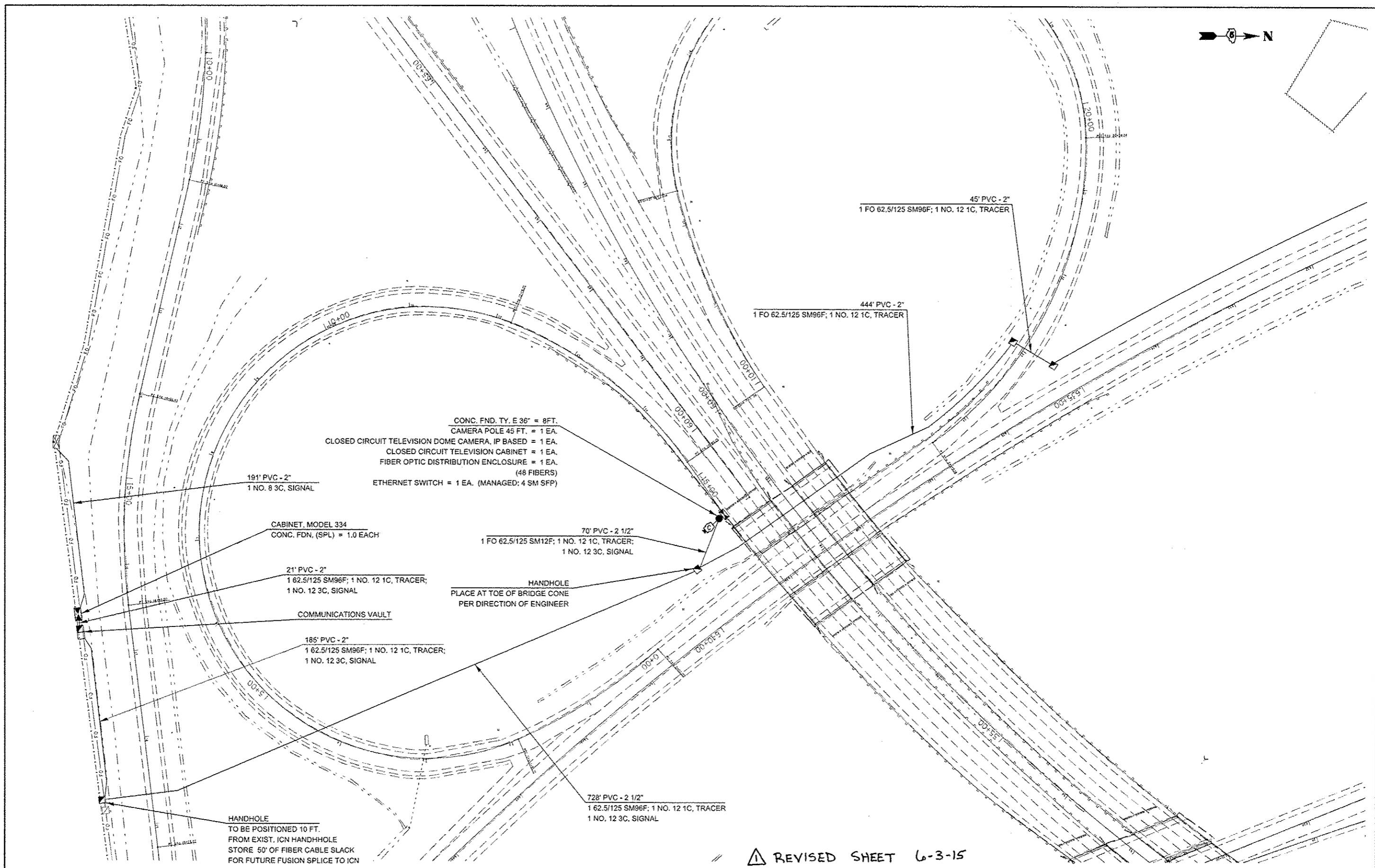
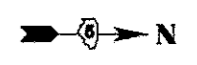
I-74 / 55 - I-74 / 55 INTERCHANGE TO MARKET ST.

(NOT TO SCALE)



⚠ REVISED SHEET 6-1-15

FILE NAME c:\pwwork\pvidot\biggar\du0425949\7046	USER NAME biggard	DESIGNED -	REVISED -	STATE OF ILLINOIS DEPARTMENT OF TRANSPORTATION	PLAN SHEET - LOCATION 2		F.A. RTE.	SECTION	COUNTY	TOTAL SHEETS	SHEET NO.	
	Bloomington ITS working file.dgn	DRAWN -	REVISED -				VAR	FY2015 ITS-2	MCLEAN	36	10	
MODEL NAME	PLOT SCALE 3937.0079' / m	CHECKED -	REVISED -		SCALE:	SHEET	OF	SHEETS	STA.	TO STA.	CONTRACT NO. 70A6B	
	PLOT DATE 5/7/2015	DATE -	REVISED -		ILLINOIS FED. AID PROJECT							



REVISI REVISED SHEET 6-3-15

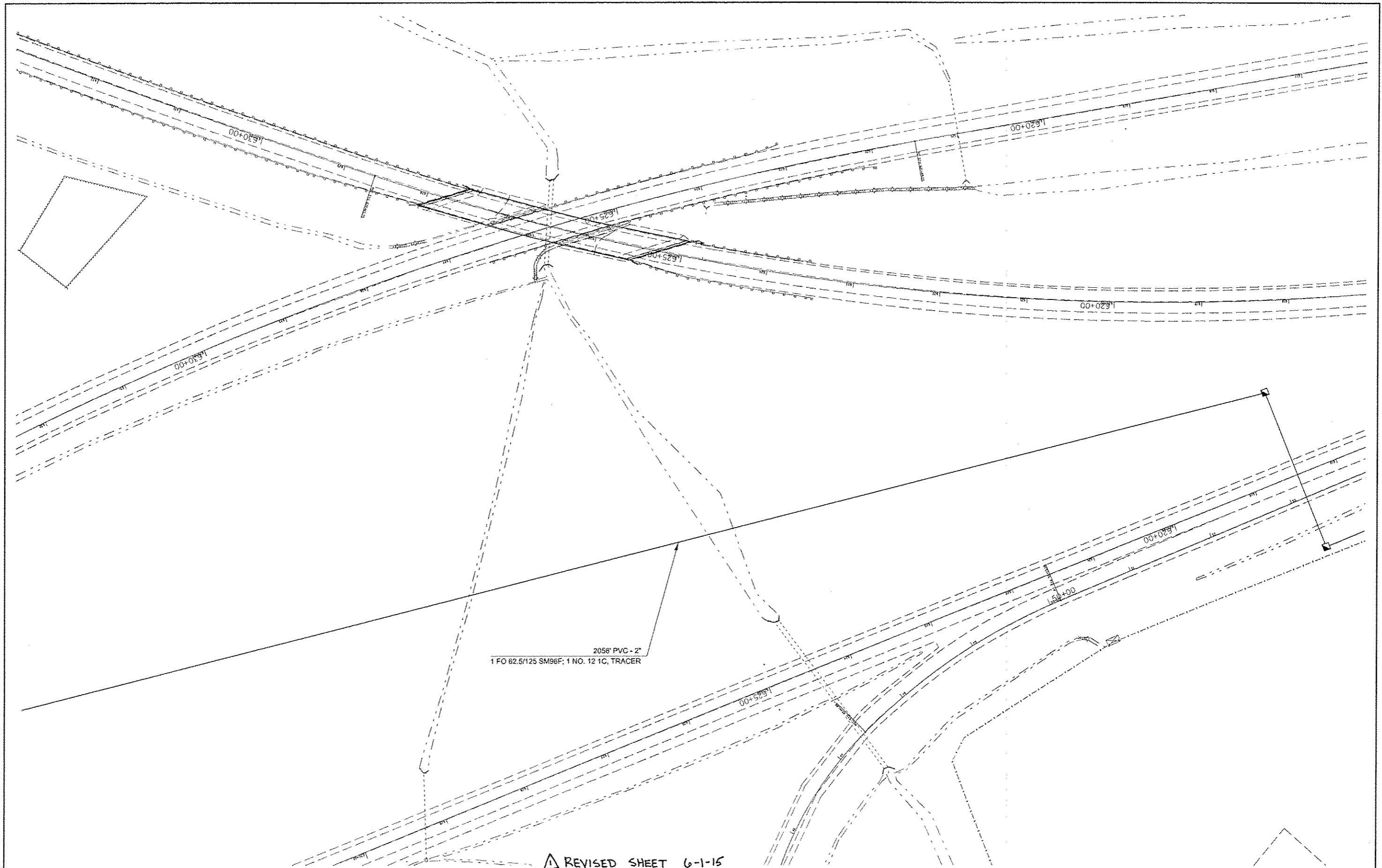
FILE NAME -	USER NAME - buggord	DESIGNED -	REVISED -
projects\1007\offices\District 5\Projects\057\		DRAWN Data Design\70A68	REVISED file-
PLT: SCALE - 1/8"=1'-0"		CHECKED -	REVISED -
PLT: DATE - 6/3/2015		DATE -	REVISED -

**STATE OF ILLINOIS
DEPARTMENT OF TRANSPORTATION**

PLAN SHEET - LOCATION 2

SCALE:	SHEET	OF	SHEETS	STA.	TO	STA.
--------	-------	----	--------	------	----	------

F.A. RTE.	SECTION	COUNTY	TOTAL SHEETS	SHEET NO.
VAR	FY2015 ITS-2	MCCLEAN	36	11
ILLINOIS FED. AID PROJECT			CONTRACT NO. 70A68	

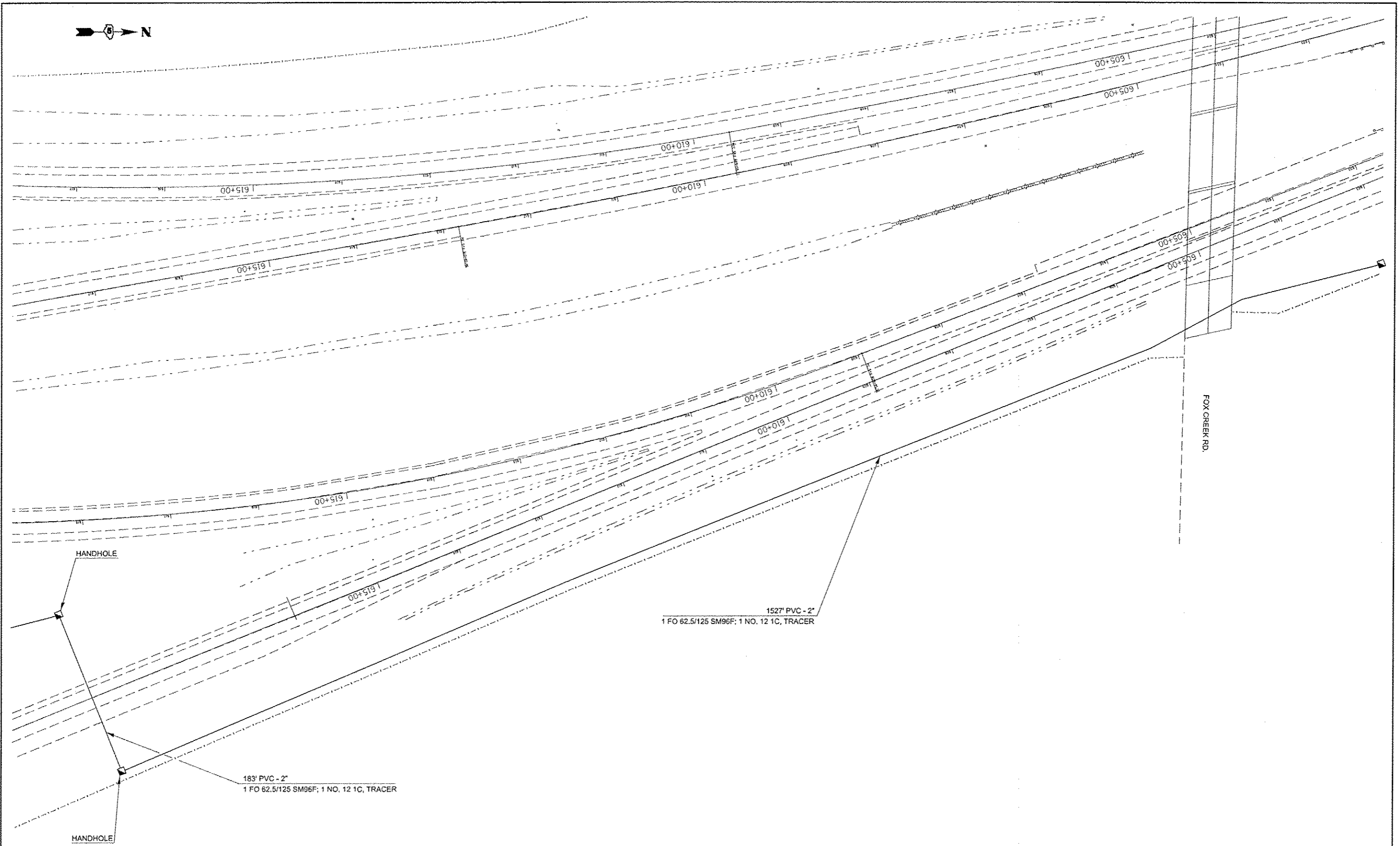


FILE NAME >	USER NAME > biggard	DESIGNED ~	REVISED ~
c:\pwwork\pwwork\biggard\lab425949\7000	Bloomington ITS working file.dgn	DRAWN ~	REVISED ~
	PLOT SCALE > 3937.0879' / m	CHECKED ~	REVISED ~
MODELNAME	PLOT DATE > 9/7/2015	DATE ~	REVISED ~

**STATE OF ILLINOIS
DEPARTMENT OF TRANSPORTATION**

PLAN SHEET - LOCATION 2			
SCALE:	SHEET	OF SHEETS	STA. TO STA.

F.A. RTE.	SECTION	COUNTY	TOTAL SHEETS	SHEET NO.
VAR	FY2015 ITS-2	MCLEAN	36	12
ILLINOIS FED. AID PROJECT				
CONTRACT NO. 70A68				



△ REVISED SHEET 6-1-15

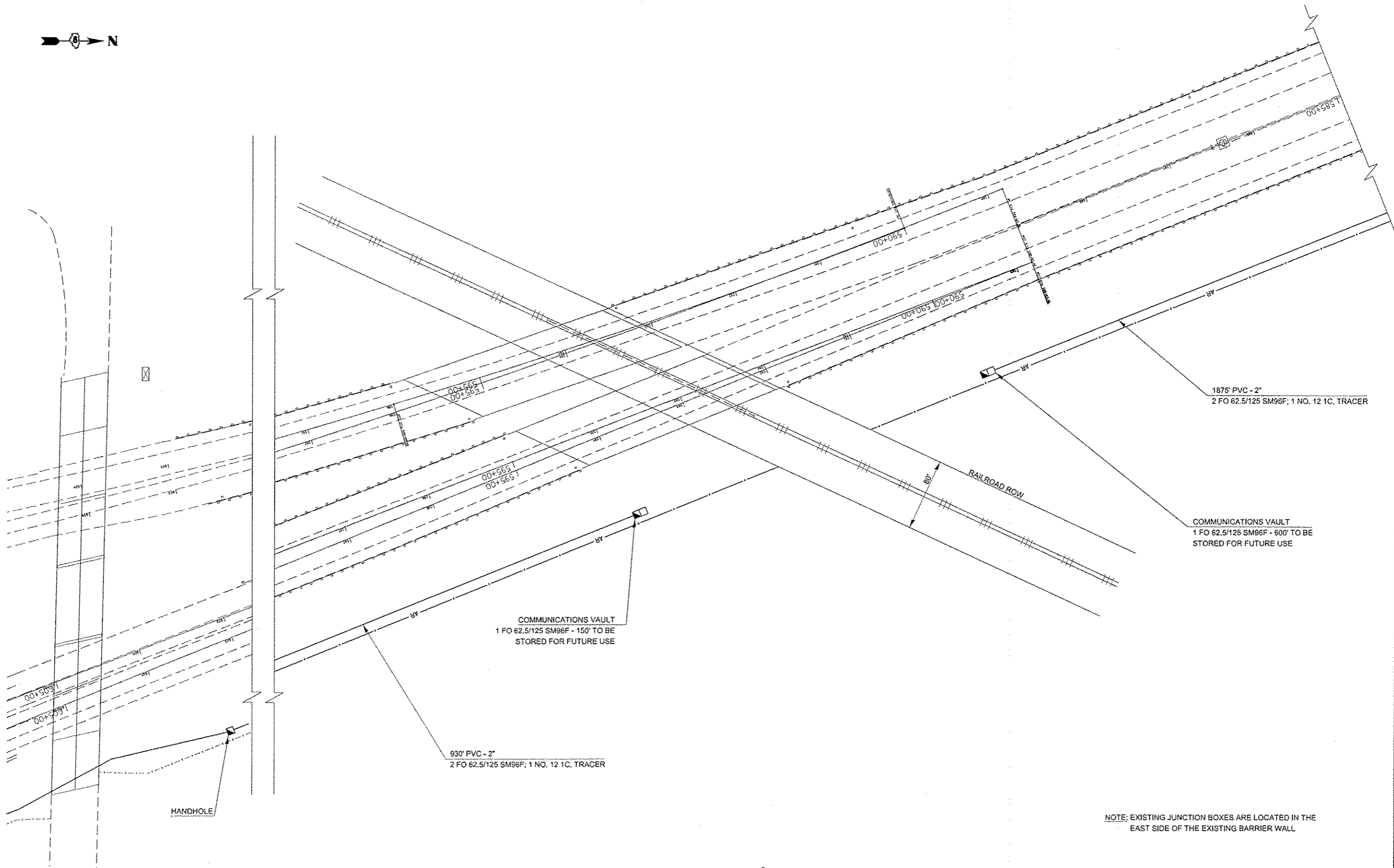
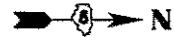
FILE NAME :	USER NAME :	DESIGNED :	REVISED :
g:\pwwork\pwwork\biggards\0425949\7068	biggards	Bloomington ITS working file\dgn	
MODELNAME	PLOT SCALE :	CHECKED :	REVISED :
	1" = 3937.0079' / m		
	PLOT DATE :	DATE :	REVISED :
	5/7/2015		

STATE OF ILLINOIS
DEPARTMENT OF TRANSPORTATION

SCALE:		SHEET	OF	SHEETS	STA.	TO STA.

PLAN SHEET - LOCATION 2

F.A. RTE.	SECTION	COUNTY	TOTAL SHEETS	SHEET NO.
VAR	FY2015 ITS-2	MCLEAN	36	13
			CONTRACT NO. 70A68	
ILLINOIS FED. AID PROJECT				



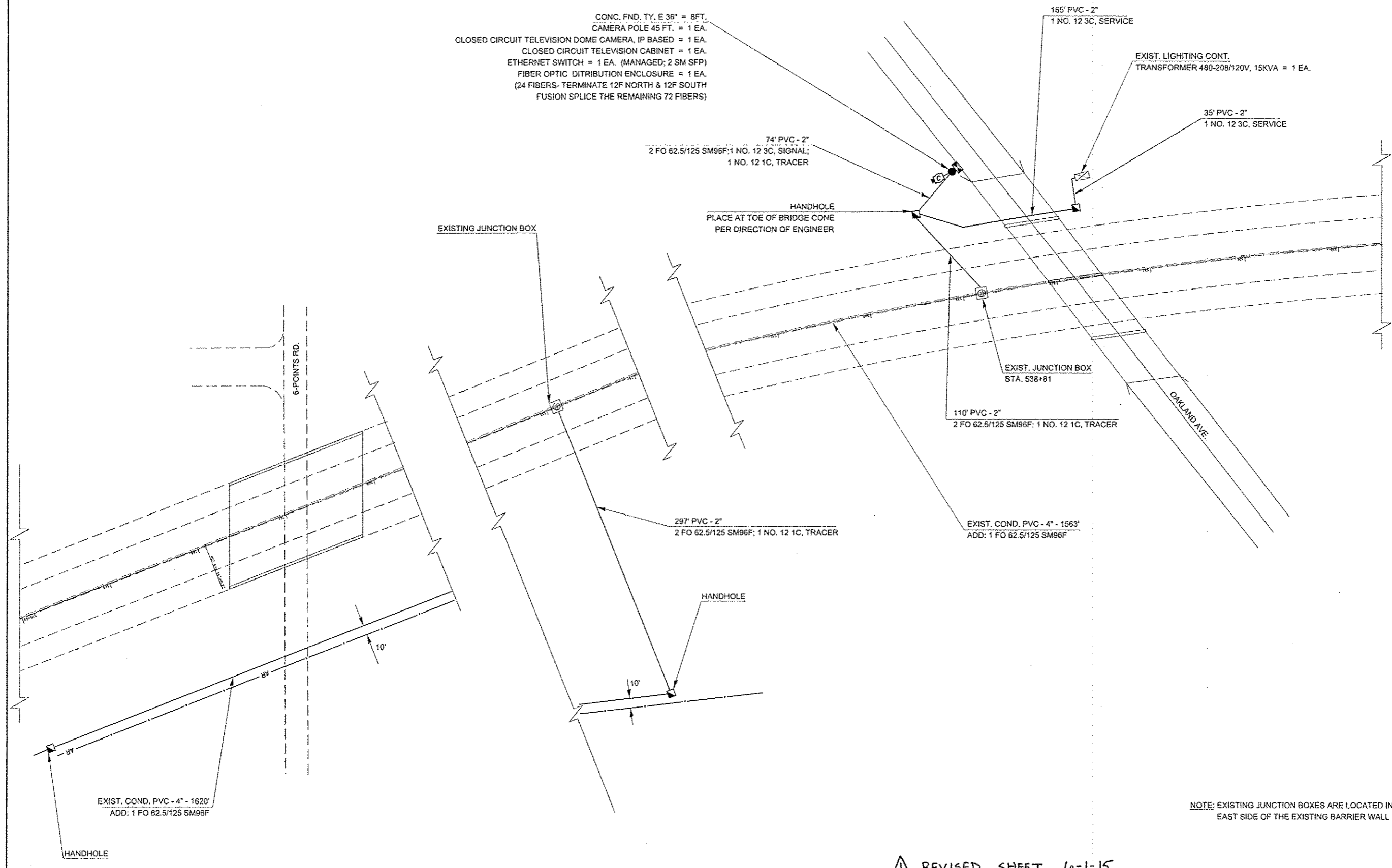
NOTE: EXISTING JUNCTION BOXES ARE LOCATED IN THE EAST SIDE OF THE EXISTING BARRIER WALL

△ REVISED SHEET 6-1-15

FILE NAME =	USER NAME = biggsrd	DESIGNED -	REVISED -	STATE OF ILLINOIS DEPARTMENT OF TRANSPORTATION	PLAN SHEET - LOCATION 2	F.A. RTE.	SECTION	COUNTY	TOTAL SHEETS	SHEET NO.	
c:\pwwork\pwwork\biggsrd\0425949\70a6	Bloomington ITS working file.dgn	DRAWN -	REVISED -			VAR	FY2015 ITS-2	MCLEAN	36	14	
MODELNAME#	PLOT SCALE = 3937.0079 / m	CHECKED -	REVISED -			SCALE:	SHEET	OF	SHEETS	STA.	TO STA.
	PLOT DATE = 5/7/2015	DATE -	REVISED -								
						ILLINOIS FED. AID PROJECT					



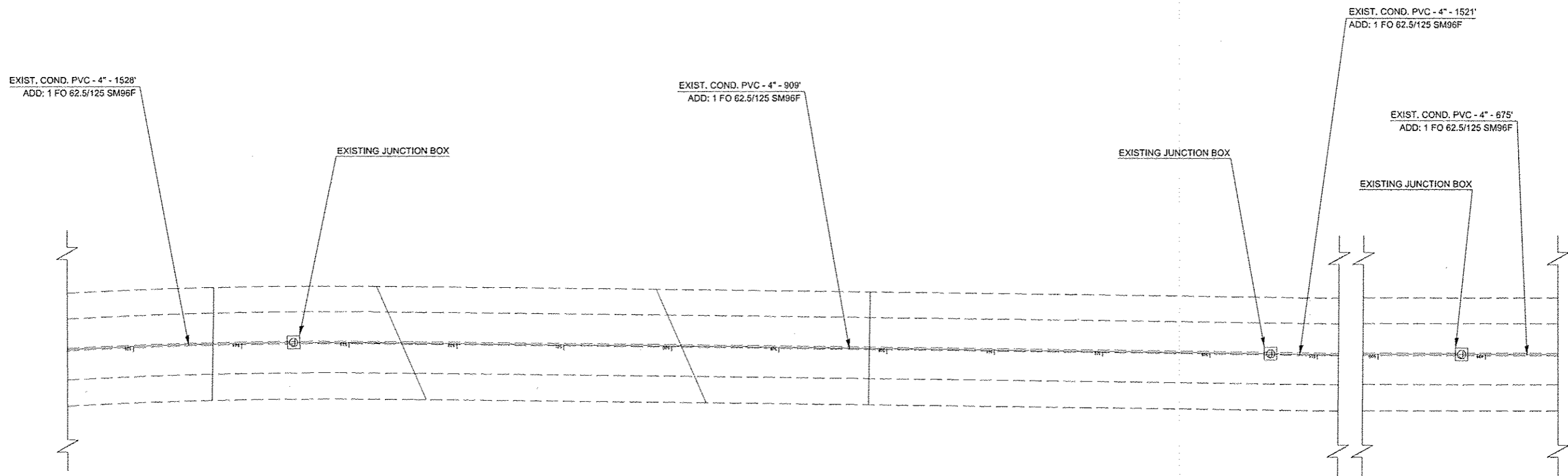
CONC. FND. TY, E 36" = 8FT.
 CAMERA POLE 45 FT. = 1 EA.
 CLOSED CIRCUIT TELEVISION DOME CAMERA, IP BASED = 1 EA.
 CLOSED CIRCUIT TELEVISION CABINET = 1 EA.
 ETHERNET SWITCH = 1 EA. (MANAGED; 2 SM SFP)
 FIBER OPTIC DISTRIBUTION ENCLOSURE = 1 EA.
 (24 FIBERS- TERMINATE 12F NORTH & 12F SOUTH
 FUSION SPLICE THE REMAINING 72 FIBERS)



NOTE: EXISTING JUNCTION BOXES ARE LOCATED IN THE EAST SIDE OF THE EXISTING BARRIER WALL

⚠ REVISÉD SHEET 6-1-15

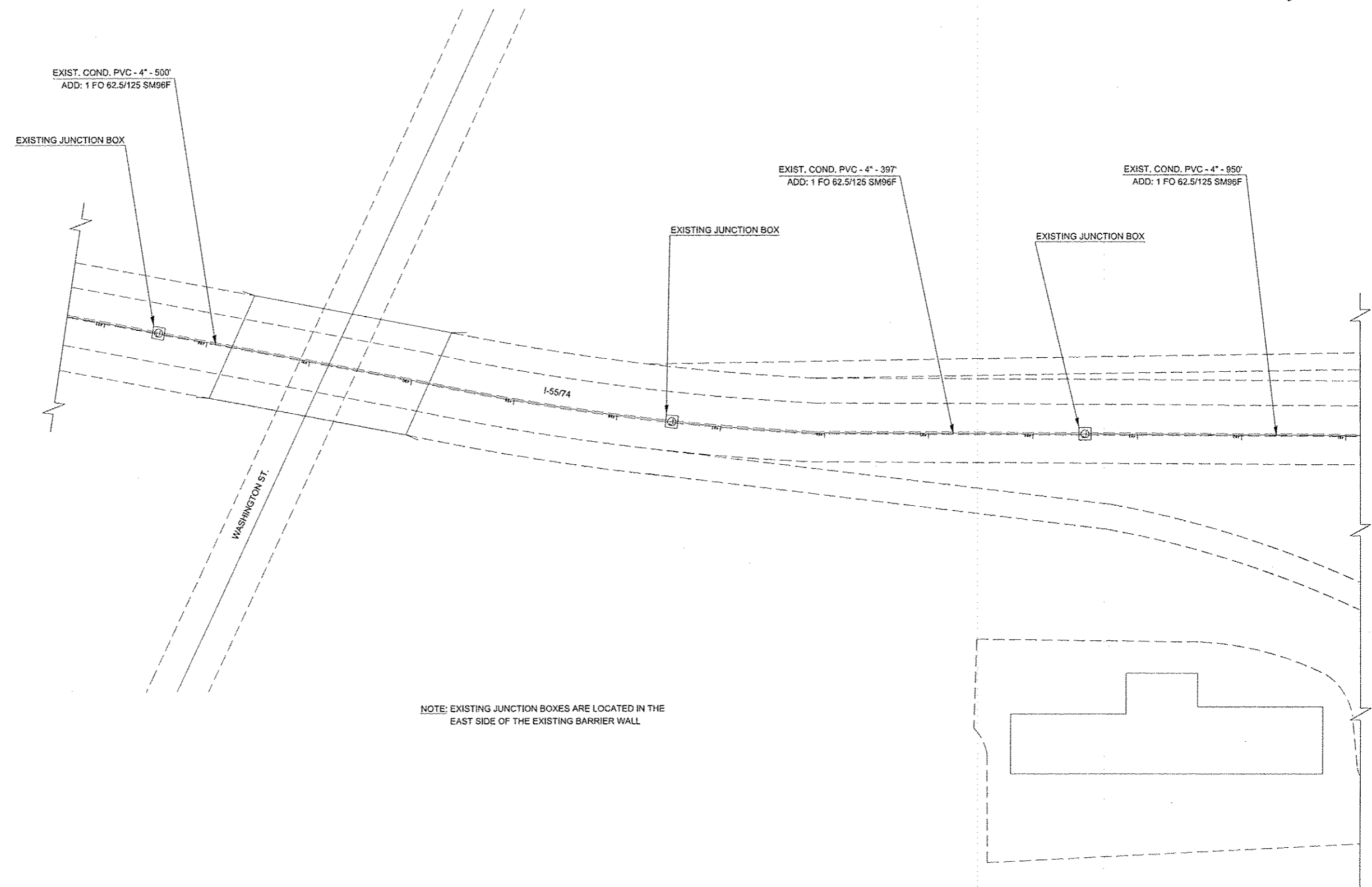
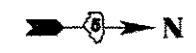
FILE NAME >	USER NAME = biggsrd	DESIGNED -	REVISED -	STATE OF ILLINOIS DEPARTMENT OF TRANSPORTATION	PLAN SHEET - LOCATION 2		F.A. RTE.	SECTION	COUNTY	TOTAL SHEETS	SHEET NO.
at:\p\work\p\dot\biggsrd\0425949\7046	Bloomington ITS working file.dgn	DRAWN -	REVISED -				VAR	FY2015 ITS-2	MCLEAN	36	15
MODEL NAME *	PLOT SCALE = 3937.8079' / " "	CHECKED -	REVISED -				CONTRACT NO. 70A68				
	PLOT DATE = 5/7/2015	DATE -	REVISED -				ILLINOIS FED. AID PROJECT				



NOTE: EXISTING JUNCTION BOXES ARE LOCATED IN THE EAST SIDE OF THE EXISTING BARRIER WALL

⚠ REVISION SHEET 6-1-15

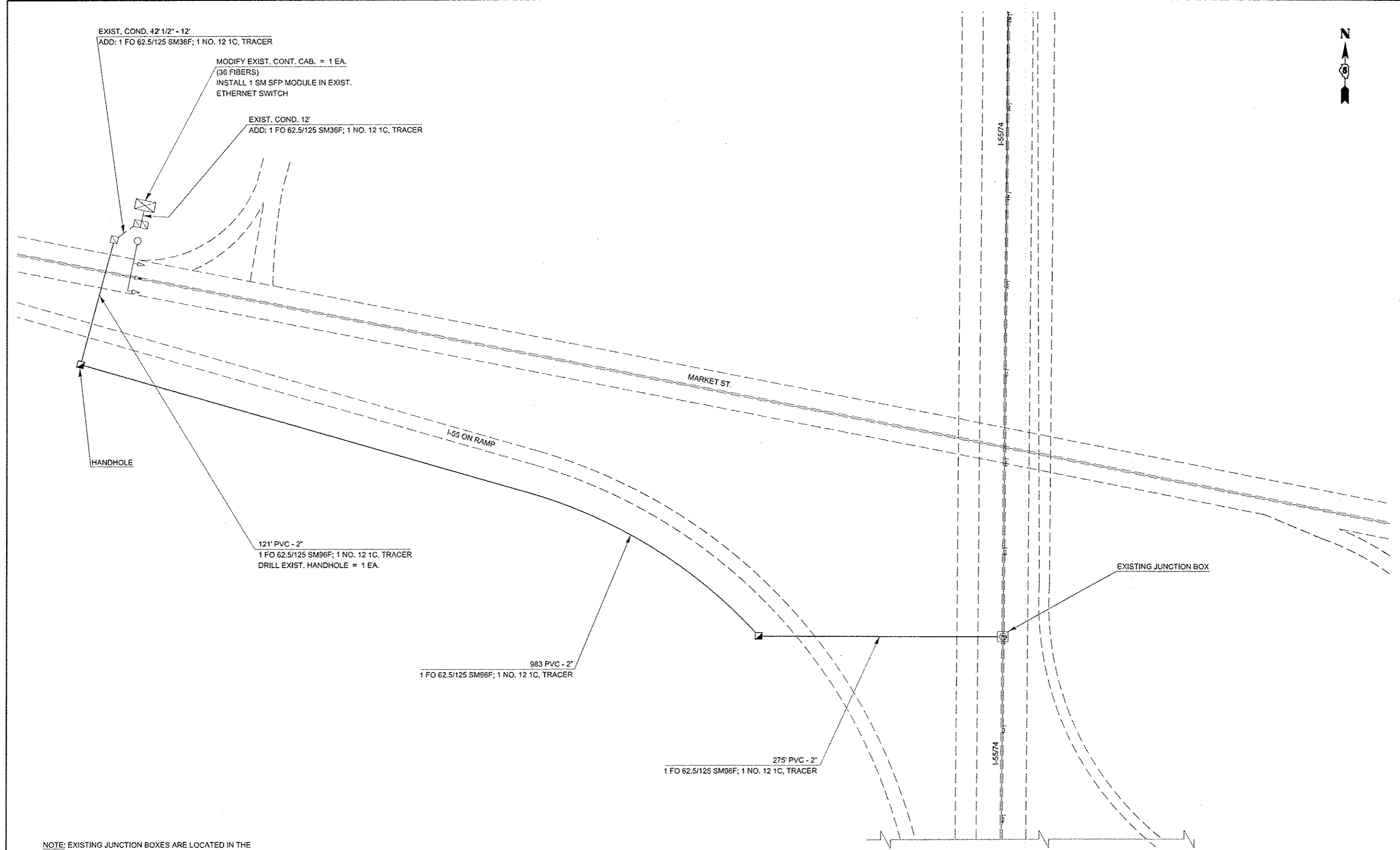
FILE NAME :	USER NAME : biggard	DESIGNED -	REVISED -	STATE OF ILLINOIS DEPARTMENT OF TRANSPORTATION	PLAN SHEET - LOCATION 2			F.A. RTE.	SECTION	COUNTY	TOTAL SHEETS	SHEET NO.
e:\pwwork\pwwork\biggard\10425949\7006	Bloomington ITS working file.dgn	DRAWN -	REVISED -					VAR	FY2015 ITS-2	MCLEAN	36	16
MODELNAME :	PLOT SCALE : 3937.0079 / 1" =	CHECKED -	REVISED -					CONTRACT NO.			ILLINOIS FED. AID PROJECT	
	PLOT DATE : 5/7/2015	DATE -	REVISED -					SCALE:	SHEET	OF	SHEETS	STA.



NOTE: EXISTING JUNCTION BOXES ARE LOCATED IN THE EAST SIDE OF THE EXISTING BARRIER WALL

⚠ REVISIED SHEET 6-1-15

FILE NAME *	USER NAME *	DESIGNED -	REVISIED -	STATE OF ILLINOIS DEPARTMENT OF TRANSPORTATION	PLAN SHEET - LOCATION 2		F.A. RTE.	SECTION	COUNTY	TOTAL SHEETS	SHEET NO.	
c:\pwwork\pwwork\biggard\0425949\7806	biggard	DRAWN -	REVISIED -				VAR	FY2015 ITS-2	MCLEAN	36	17	
MODELNAME		CHECKED -	REVISIED -		SCALE:	SHEET	OF	SHEETS	STA.	TO STA.	CONTRACT NO.	
		DATE	REVISIED -								[ILLINOIS] FED. AID PROJECT	



EXIST. COND. 42 1/2" - 12'
ADD: 1 FO 62.5/125 SM36F; 1 NO. 12 1C, TRACER

MODIFY EXIST. CONT. CAB. = 1 EA.
(36 FIBERS)
INSTALL 1 SM SFP MODULE IN EXIST.
ETHERNET SWITCH

EXIST. COND. 12'
ADD: 1 FO 62.5/125 SM36F; 1 NO. 12 1C, TRACER

HANDHOLE

121' PVC - 2"
1 FO 62.5/125 SM96F; 1 NO. 12 1C, TRACER
DRILL EXIST. HANDHOLE = 1 EA.

983 PVC - 2"
1 FO 62.5/125 SM96F; 1 NO. 12 1C, TRACER

275' PVC - 2"
1 FO 62.5/125 SM96F; 1 NO. 12 1C, TRACER

EXISTING JUNCTION BOX

NOTE: EXISTING JUNCTION BOXES ARE LOCATED IN THE
EAST SIDE OF THE EXISTING BARRIER WALL

⚠ REVISÉD SHEET 6-1-15

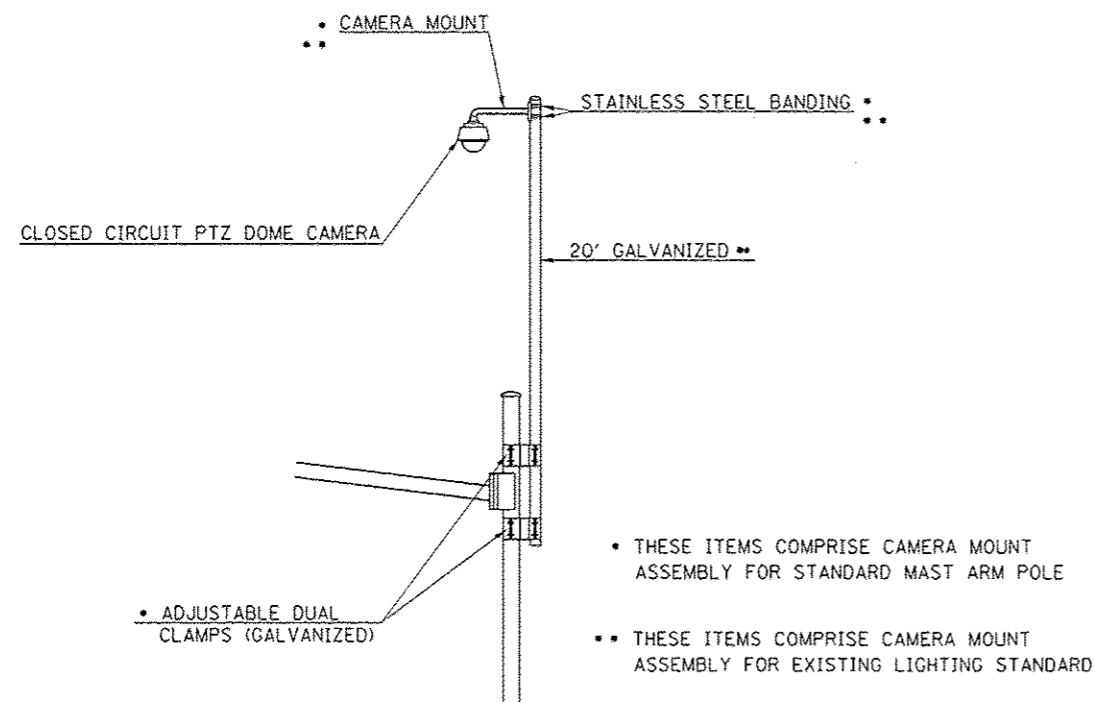
FILE NAME =	USER NAME = biggard	DESIGNED -	REVISED -
c:\pwwork\pwwork\biggard\0425949\70A68	Bloomington ITS working files.dgn	DRAWN -	REVISED -
	PLOT SCALE = 3937.0879' / 1" =	CHECKED -	REVISED -
MODELNAME	PLOT DATE = 5/27/2015	DATE -	REVISED -

STATE OF ILLINOIS
DEPARTMENT OF TRANSPORTATION

PLAN SHEET - LOCATION 2

SCALE: SHEET OF SHEETS STA. TO STA.

F.A. RTE.	SECTION	COUNTY	TOTAL SHEETS	SHEET NO.
VAR	FY2015 ITS-2	MCLEAN	36	18
			CONTRACT NO. 70A68	
ILLINOIS FED. AID PROJECT				

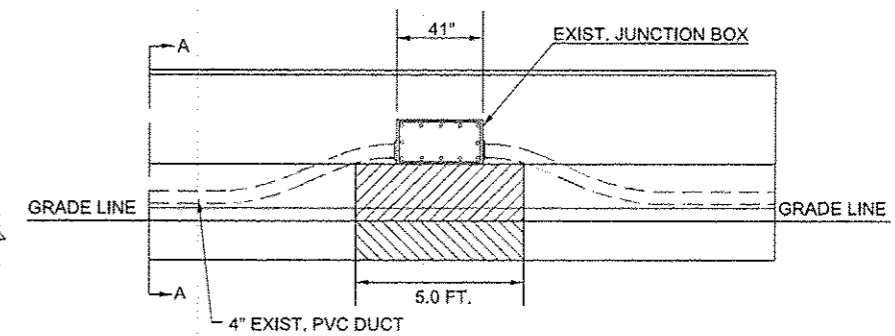
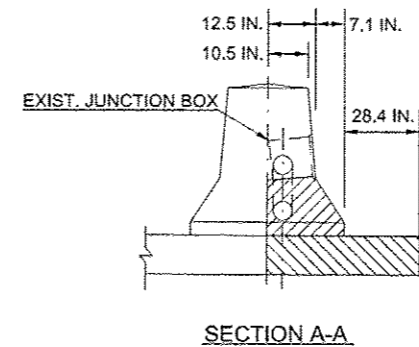


CAMERA MOUNTING ASSEMBLY DETAIL

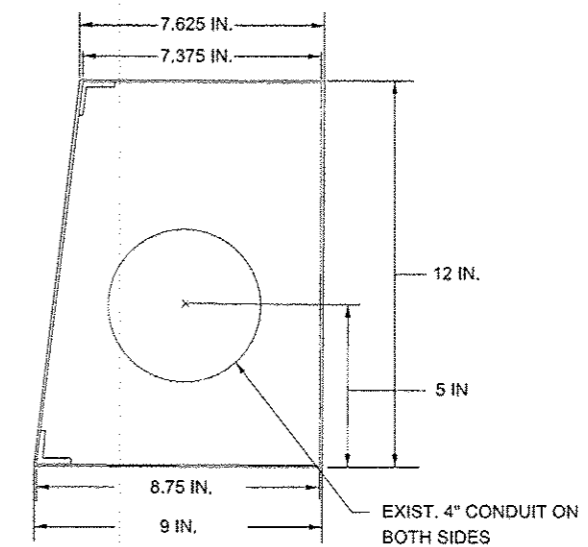
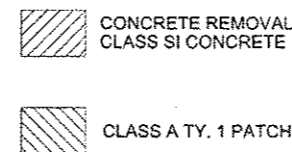
DETAIL OF I-55/I-74 EXISTING BARRIER WALL JUNCTION BOXES TO BE CONNECTED (3 LOCATIONS)

STATION LOCATIONS

STA. 474+00
STA. 538+81
STA. 554+93



**ELEVATION
EXIST. BARRIER WALL DUCT DETAIL**



**SIDE VIEW OF EXISTING
JUNCTION BOX**

REVISD SHEET 6-1-15

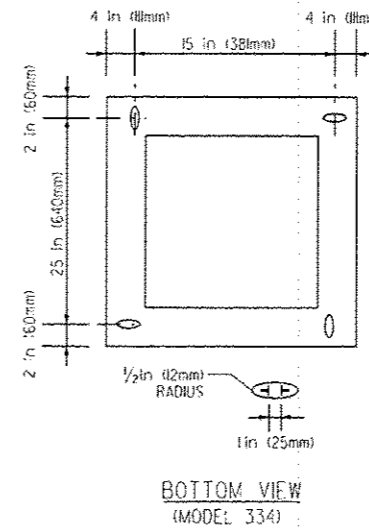
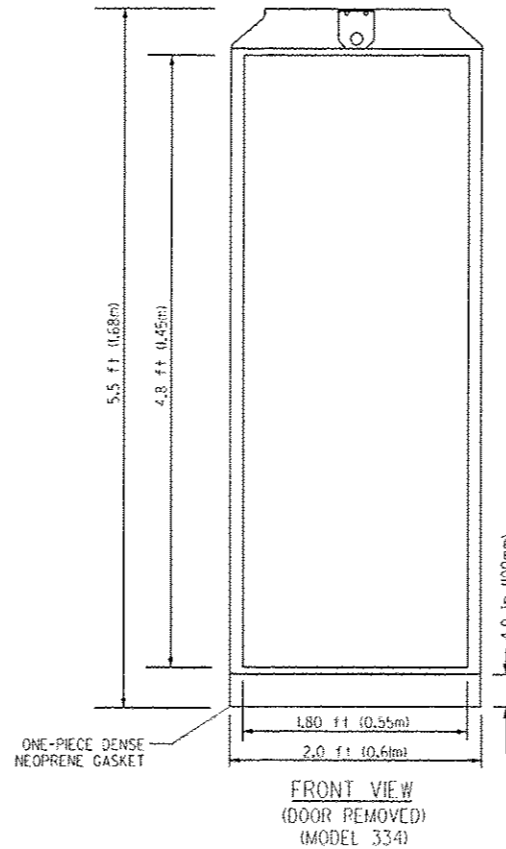
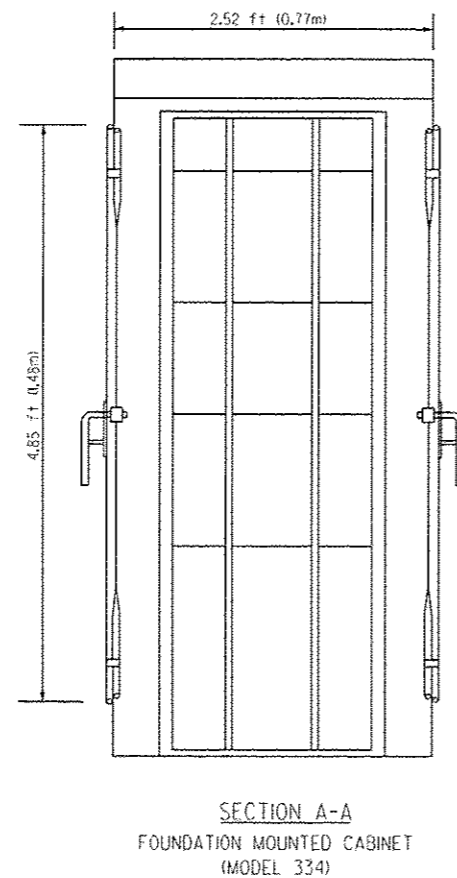
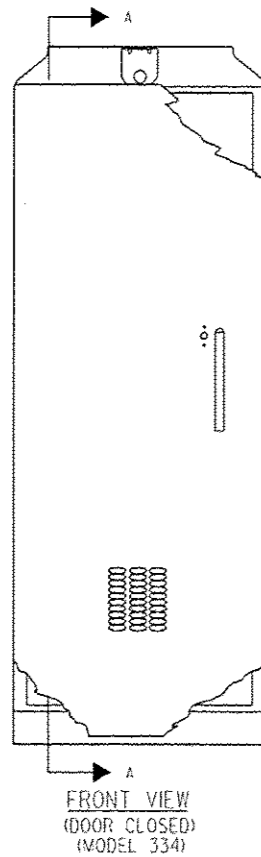
FILE NAME	USER NAME - bgsawd	DESIGNED -	REVISED -
PROJECT	PROJECT	CHECKED -	REVISED -
DATE	DATE	DATE	DATE

**STATE OF ILLINOIS
DEPARTMENT OF TRANSPORTATION**

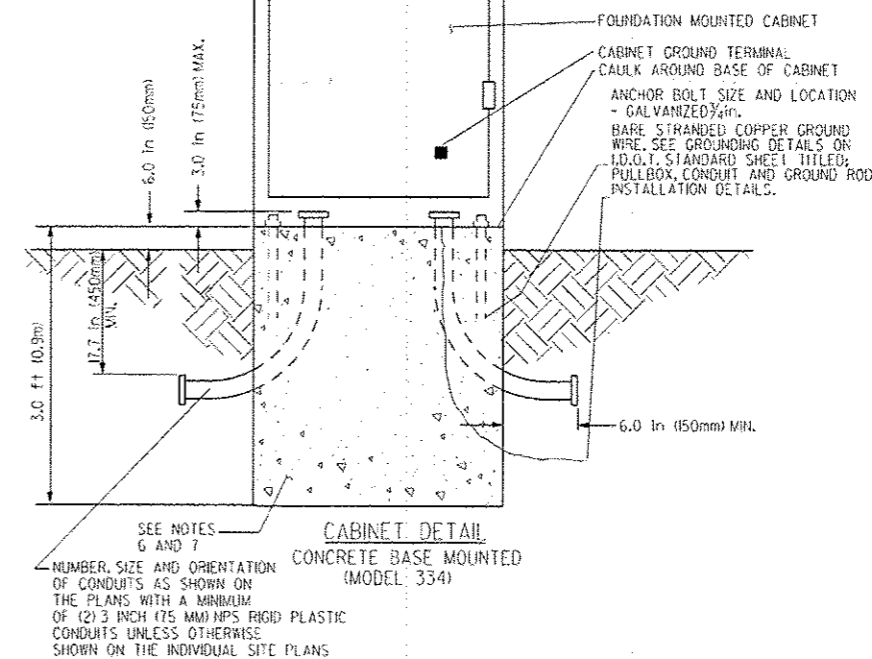
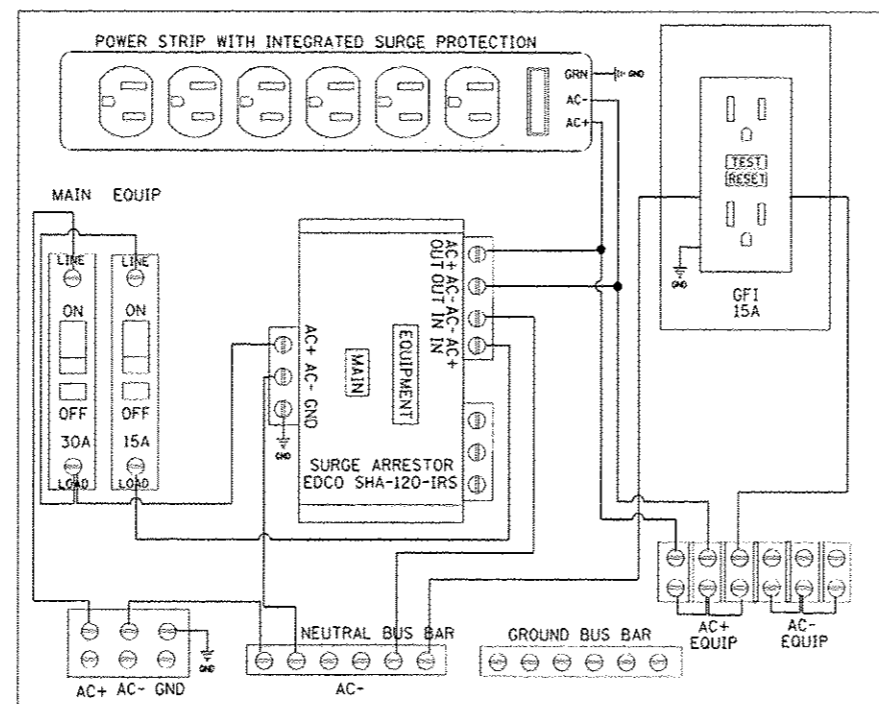
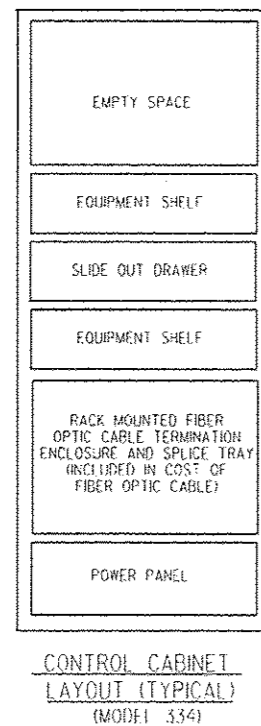
DETAILS

SCALE: SHEET OF SHEETS STA. TO STA.

F.A. RTIC.	SECTION	COUNTY	TOTAL SHEETS	SHEET NO.
VAR	FY2015 ITS-2	MCLEAN	36	36
CONTRACT NO. 70A68			ILLINOIS FED. AID PROJECT	



- NOTES (MODEL 334 CABINET):**
- REFER TO SPECIAL PROVISIONS FOR CABINET DETAILS AND ADDITIONAL REQUIREMENTS.
 - CABINET ENTRIES INCLUDE VERTICAL ARRANGEMENT FOR MAJOR EQUIPMENT ITEMS ONLY.
 - THERE WILL BE ADDITIONAL ITEMS INSTALLED IN THE CABINET ON SIDE AND BACK PANELS AS PER THE SPECIAL PROVISIONS.
 - PROVIDE ALL UNUSED SPACE AT BOTTOM OF CABINET.
 - THE CONTRACTOR SHALL INSTALL INSULATED BUSHINGS AND DUCT SEALANT AT ALL CONDUIT BEND TERMINATIONS IN FOUNDATIONS.
 - CONCRETE BASE TO BE FORMED AT LEAST 6.0 in (150mm) BELOW THE GROUND SURFACE.
 - CONCRETE BASE MUST BE CAST IN PLACE.
 - THE CABINET SHALL BE EQUIPPED WITH A THERMOSTATICALLY CONTROLLED VENTILATION FAN, DELUXE PLEATED FILTER, POWER PANEL, 96 FIBER RACK MOUNTED ENCLOSURE WITH SPLICE TRAYS, 19" MOUNTING RAILS, EQUIPMENT SHELF, AND SLIDE OUT DRAWER WITH STORAGE.
 - ALL WORK INDICATED SHALL BE PAID FOR UNDER ITEM CABINET, MODEL 334 EXCLUSIVE OF THE CONCRETE FOUNDATION.



△ SHEET ADDED 6-1-15

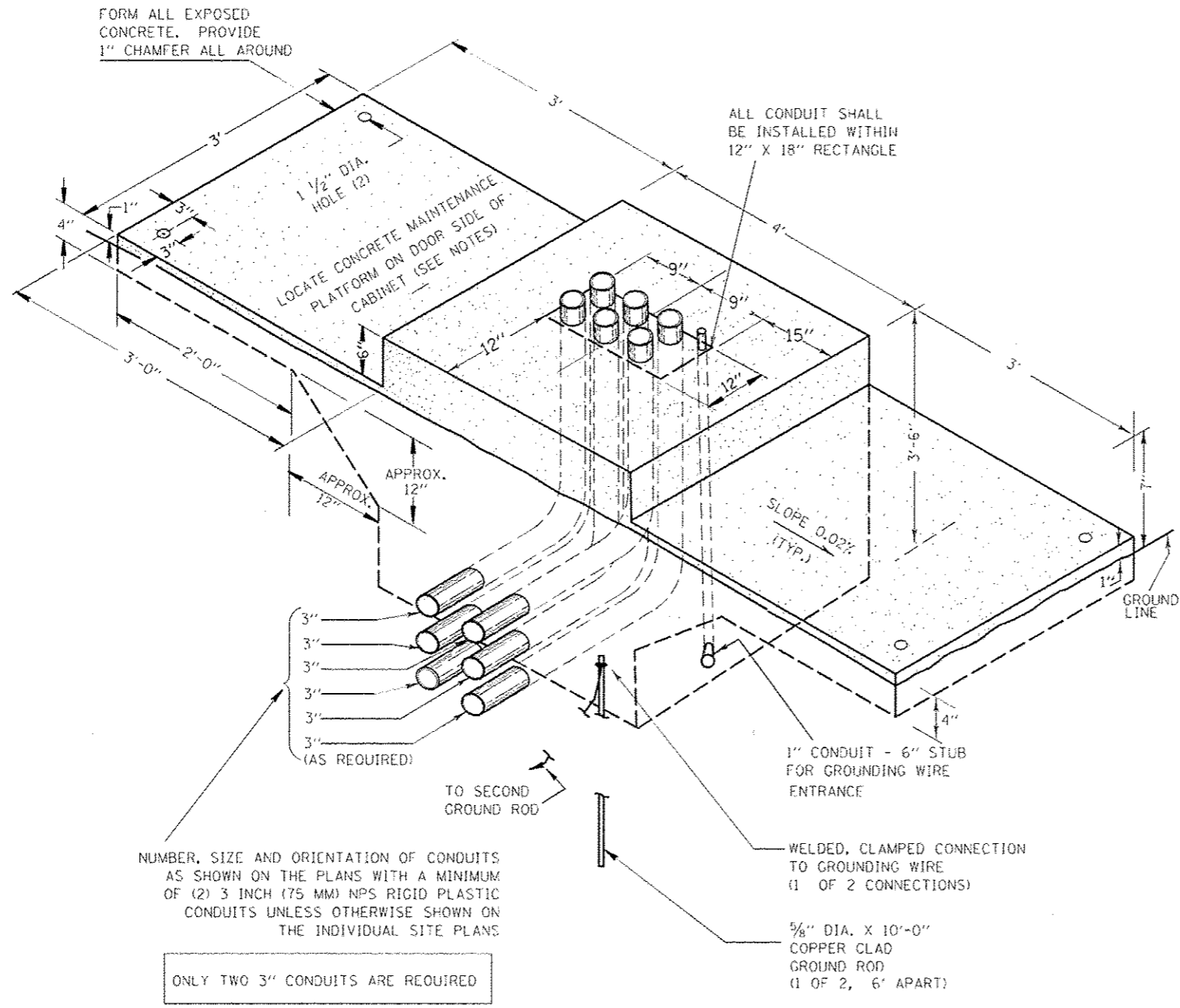
FILE NAME :	USER NAME : bgsard	DESIGNED -	REVISED -
p:\N\004EBID\INTEG\Illinois.gov\PI\DOT\Documents\DOT Offices\District 5\Projects\0579\Drawings\Design\78468 - Bloomington ITS	DRAWN BY : Design\78468 - Bloomington ITS	CHECKED -	REVISED -
	PLT SCALE : 40/8930 1/4 in.	DATE -	REVISED -
#MODELNAME4	PLT DATE : 6/1/2015		

STATE OF ILLINOIS
DEPARTMENT OF TRANSPORTATION

TYPE 334 CABINET DETAIL

F.A. R.I.E. VAR.	SECTION	COUNTY	TOTAL SHEETS	SHEET NO.
	FY2015 ITS-2	MCLEAN	36	36A
CONTRACT NO. 70A68			ILLINOIS FED. AID PROJECT	

SCALE: SHEET OF SHEETS STA. TO STA.



GENERAL NOTES

- DETAILS OF CONSTRUCTION, MATERIALS AND WORKMANSHIP NOT SHOWN ON THIS DRAWING SHALL CONFORM TO THE PERTINENT REQUIREMENTS OF THE CONTRACT.
- INSTALL FOUR- 3/4 INCH DIAMETER X 12 INCH MINIMUM LENGTH APPROVED J-BOLTS TO ANCHOR THE CABINET BASES. THE ANCHOR BOLTS SHALL BE GALVANIZED STEEL AND LOCATED AS DIRECTED BY THE ENGINEER TO PROPERLY ANCHOR THE CONTROL CABINET TO THE BASE.
- WHEN REQUIRED TO CONNECT NONMETALLIC CONDUIT TO METALLIC CONDUIT, ONLY ADAPTER FITTINGS, U.L. LISTED FOR ELECTRICAL USE, SHALL BE USED.
- CONDUIT HEIGHT ABOVE THE CONCRETE BASE SHALL BE 3 INCH.
- DEPTH OF CONDUIT INSTALLED BELOW THE TRAVELED WAY SHALL BE 24 INCHES MINIMUM AND 36 INCHES MAXIMUM.
- DEPTH OF CONDUIT INSTALLED THAT IS NOT BELOW THE TRAVELED WAY SHALL BE 24 INCHES MINIMUM AND 36 INCHES MAXIMUM.
- ANY EXCEPTION TO THE MAXIMUM DEPTH SHALL BE ONLY WITH THE WRITTE APPROVAL OF THE ENGINEER.
- CONTROL CABINET BASE TOP SURFACES SHALL BE TROWEL FINISHED AND LEVEL, PRIOR TO CABINET INSTALLATION. LEVELING OF TOP SURFACES AFTER CONCRETE BASE HAS CURED SHALL ONLY BE ACCOMPLISHED BY GRINDING.
- MAINTENANCE PLATFORMS ARE NOT REQUIRED WHEN THE SURROUNDING AREA IS PAVED.
- MINIMUM BENDING RADIUS OF CONDUIT = 6 X THE DIAMETER.
- ALL METALLIC CONDUIT ENDS SHALL BE REAMED AND THREADED.
- CAP ALL BELOW GRADE METALLIC CONDUIT ENDS IN WHICH WIRE OR CABLE IS NOT BEING INSTALLED.
- PLUG ALL BELOW GRADE NONMETALLIC CONDUIT ENDS IN WHICH WIRE OR CABLE IS NOT BEING INSTALLED.
- ALL CONDUIT ENDS AT THE TOP OF CONCRETE BASES SHALL BE CAPPED IF METALLIC OR PLUGGED IF NONMETALLIC IMMEDIATELY AFTER PLACEMENT AND BEFORE CONCRETE IS POURED. CONDUITS IN WHICH WIRE OR CABLE IS NOT BEING INSTALLED SHALL REMAIN CAPPED OR PLUGGED.
- CONCRETE FORM DEPTH BELOW FINISHED GRADE SHALL BE 6" MAXIMUM. CONCRETE FORMS SHALL BE REMOVED AFTER CONCRETE HAS SET.
- ALL METALLIC CONDUIT ENDS AT TOP OF CONCRETE BASES SHALL HAVE BUSHINGS IF WIRE IS INSTALLED AND ALL NON METALLIC CONDUIT ENDS AT TOP OF CONCRETE BASES SHALL HAVE END BELLS IF WIRE IS INSTALLED.

CONCRETE FOUNDATION (SPECIAL) CONCRETE BASE, CONTROLLER CABINET

⚠ SHEET ADDED 6-1-15

FILE NAME :	USER NAME :	DESIGNED :	REVISED :	STATE OF ILLINOIS DEPARTMENT OF TRANSPORTATION	CONCRETE FOUNDATION, TYPE 1 (MODEL 334 CABINET) DETAIL	F.A. RTE.	SECTION	COUNTY	TOTAL SHEETS	SHEET NO.	
PROJECT :	DATE :	CHECKED :	REVISED :			VAR.	FY2015 ITS-2	MCLEAN	36	368	
SCALE :	DATE :	DATE :	DATE :			CONTRACT NO. 70A68					
MODEL NAME :	DATE :	DATE :	DATE :			ILLINOIS FED. AID PROJECT					
SCALE:						SHEET OF SHEETS		STA. TO STA.			