

STATE OF ILLINOIS
DEPARTMENT OF TRANSPORTATION
DIVISION OF HIGHWAYS

**PROPOSED
HIGHWAY PLANS**

FAP ROUTE 71 (IL 54)
SECTION (3) I-4, L, RS-6
SANGAMON COUNTY

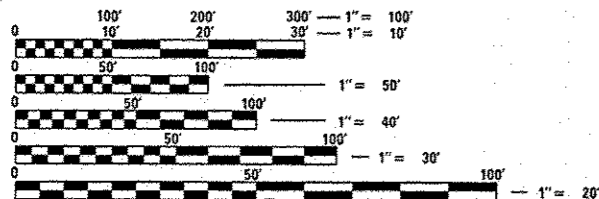
PAVING, SHOULDER RECONSTRUCTION, MILLED RUMBLE STRIPS

C-96-062-14
PROJECT: ACHSIP-0071 (067)
R4W

FOR INDEX OF SHEETS, SEE SHEET NO. 2

STANDARDS

- | | |
|-----------|-----------|
| 000001-06 | 701326-04 |
| 001006 | 701901-04 |
| 442201-03 | 780001-05 |
| 642006 | 781001-03 |
| 701001-02 | 821101-01 |
| 701006-05 | 825001-02 |
| 701011-04 | 825006-02 |
| 701101-04 | 830006-03 |
| 701106-02 | 836001-02 |
| 701201-04 | 838001 |
| 701301-04 | |
| 701306-03 | |
| 701311-03 | |



FULL SIZE PLANS HAVE BEEN PREPARED USING STANDARD ENGINEERING SCALES. REDUCED SIZED PLANS WILL NOT CONFORM TO STANDARD SCALES. IN MAKING MEASUREMENTS ON REDUCED PLANS, THE ABOVE SCALES MAY BE USED.

J.U.L.I.E.
JOINT UTILITY LOCATION INFORMATION FOR EXCAVATION
1-800-892-0123
OR 811

PROJECT ENGINEER: KEITH DONOVAN (217)782-4761
TEAM ENGINEER: ED KERN (217)524-7547

CONTRACT NO. 72G91

PROJECT ENDS
STA. 103 + 00

STATION EQUATION
STA. 117 + 67.42 (N.B.) BK.
STA. 98 + 15.41 AHD.

STATION EQUATION
STA 117 + 07.42 (N.B.)
STA 117 + 68.70 (S.B ENDS)

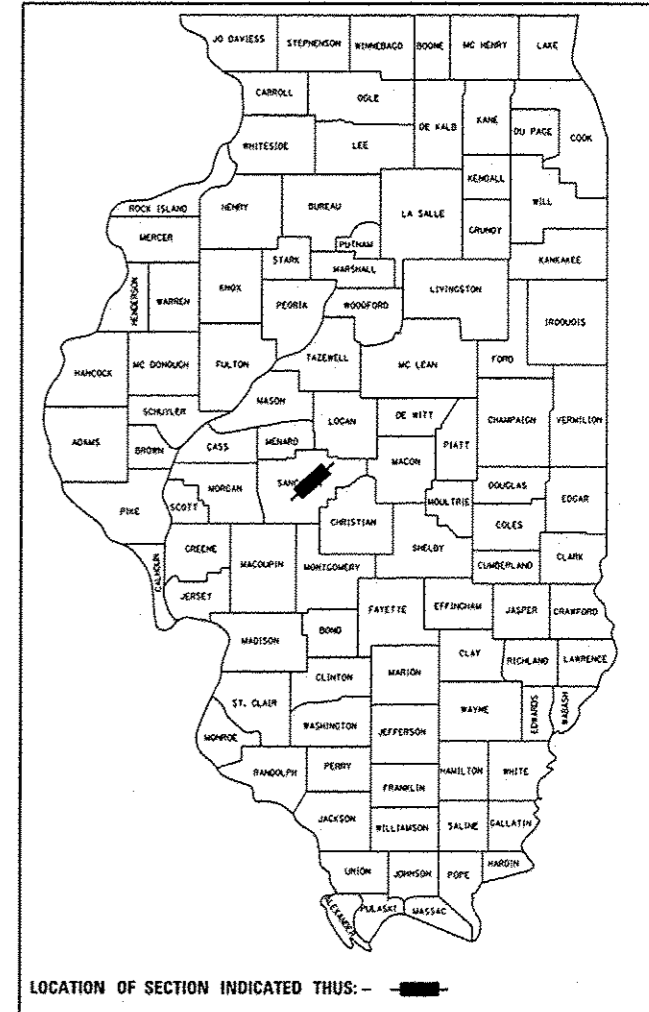
PROJECT BEGINS
STA. 64 + 24.75 (N.B.)
STA. 59 + 25.77 (S.B.)



GROSS LENGTH = 6,035.37 FT. = 1.143 MILE
NET LENGTH = 6,035.37 FT. = 1.143 MILE

F.A.P. RTE.	SECTION	COUNTY	TOTAL SHEETS	SHEET NO.
71	(3) I-4, L, RS-6	SANGAMON	26	1
		ILLINOIS	CONTRACT NO. 72G91	

D-96-062-14



ADI
IL-54 : 5,450 (2013)
SU: 5.96%
MU: 3.49%

STATE OF ILLINOIS
DEPARTMENT OF TRANSPORTATION
DIVISION OF HIGHWAYS

SUBMITTED March 20, 2015
Roger L. Diackel, Jr.
DEPUTY DIRECTOR OF HIGHWAYS, REGION ENGINEER

May 8, 2015
John D. Baranzelli, P.E.
ENGINEER OF DESIGN AND ENVIRONMENT

May 8, 2015
Omor Osman, P.E.
DIRECTOR OF HIGHWAYS, CHIEF ENGINEER

**PRINTED BY THE AUTHORITY
OF THE STATE OF ILLINOIS**

GENERAL NOTES

INDEX OF SHEETS

1. THE CONTRACTOR SHALL BE RESPONSIBLE FOR PROTECTING UTILITY PROPERTY FROM CONSTRUCTION OPERATIONS AS OUTLINED IN ARTICLE 107.31 OF THE STANDARD SPECIFICATIONS. THE JULIE NUMBER IS 800-892-0123. A MINIMUM OF FORTY-EIGHT HOURS ADVANCE NOTICE IS REQUIRED. ANY DAMAGE TO THE UNDERGROUND FACILITIES, CAUSED BY THE CONTRACTOR SHALL BE REPAIRED TO THE SATISFACTION OF THE DEPARTMENT AT THE CONTRACTOR'S EXPENSE, INCLUDING TEMPORARY REPAIRS WHICH MAY BE REQUIRED TO KEEP THE FACILITY OPERATIONAL WHILE MATERIAL IS BEING OBTAINED TO MAKE PERMANENT REPAIRS. SPECIAL ATTENTION SHOULD BE GIVEN TO THE AREA ADJACENT TO THE APPROACH PAVEMENT WHERE FRENCH DRAINS ARE TO BE CONSTRUCTED.
2. THE LOCATIONS OF THOSE BURIED AND ABOVEGROUND UTILITIES SHOWN ARE APPROXIMATE, ARE SHOWN FOR CONTRACTOR INFORMATIONAL USE ONLY, AND ARE NOT TO BE REFERENCED FOR CONSTRUCTIONS PURPOSES. THE IMPLIED PRESENCE OR ABSENCE OF UTILITIES IS NOT TO BE CONSTRUED BY THE OWNER, ENGINEER, CONTRACTOR, OR SUBCONTRACTORS TO BE AN ACCURATE AND COMPLETE REPRESENTATION OF UTILITIES THAT MAY OR MAY NOT EXIST ON THE CONSTRUCTION SITE. BURIED AND ABOVEGROUND UTILITY LOCATION, IDENTIFICATION, AND MARKING ARE THE SOLE RESPONSIBILITY OF THE CONTRACTOR. REROUTING, DISCONNECTION, PROTECTION, ETC. OF ANY UTILITIES MUST BE COORDINATED BETWEEN THE CONTRACTOR, UTILITY COMPANY, AND OWNER. SITE SAFETY, INCLUDING THE AVOIDANCE OF HAZARDS ASSOCIATED WITH BURIED AND ABOVEGROUND UTILITIES, REMAINS THE SOLE RESPONSIBILITY OF THE CONTRACTOR.
3. THE THICKNESS OF HOT-MIX ASPHALT MIXTURES SHOWN ON THE PLANS IS THE NOMINAL THICKNESS. DEVIATIONS FROM THE NOMINAL THICKNESS WILL BE PERMITTED WHEN SUCH DEVIATIONS OCCUR DUE TO IRREGULARITIES IN THE EXISTING SURFACE OR BASE ON WHICH THE HOT-MIX ASPHALT MIXTURE IS PLACED.
4. THE FOLLOWING RATES OF APPLICATION HAVE BEEN USED IN CALCULATING PLAN QUANTITIES:

AGGREGATE SHOULDERS	1.89	TONS/CU YD
BITUMINOUS MATERIAL (PRIME COAT)		
ON MILLED SURFACES	0.05	LB/SO FT
FOG COAT	0.025	LB/SO FT
HOT-MIX ASPHALT SURFACE COURSE	112	LBS/SO YD-IN
HOT-MIX ASPHALT LEVELING BINDER	112	LBS/SO YD-IN
5. ALL ELEVATIONS REFER TO U.S.G.S. MEAN SEA LEVEL DATUM.
6. ANY REFERENCE TO A STANDARD IN THESE PLANS SHALL BE INTERPRETED TO MEAN THE EDITION AS INDICATED BY THE SUBNUMBER LISTED ON THE INDEX OF SHEETS OR THE COPY OF THE STANDARD INCLUDED IN THESE PLANS.
7. UNLESS NOTED OTHERWISE, STATIONS AND OFFSETS REFER TO CENTERLINE OF PROJECT.
8. IN ADDITION TO FIELD SURVEYS AND AERIAL SURVEYS, PLAN DIMENSIONS AND DETAILS RELATIVE TO THE EXISTING FACILITIES HAVE BEEN TAKEN FROM EXISTING PLANS AND ARE SUBJECT TO CONSTRUCTION VARIATIONS. IT SHALL BE THE CONTRACTOR'S RESPONSIBILITY TO VERIFY SUCH DIMENSIONS AND DETAILS IN THE FIELD. SUCH VARIATIONS SHALL NOT BE A CAUSE FOR ADDITIONAL COMPENSATION DUE TO A CHANGE IN THE SCOPE OF THE WORK. HOWEVER, THE CONTRACTOR WILL BE PAID FOR THE QUANTITY ACTUALLY FURNISHED AT THE UNIT PRICE BID FOR THE WORK.
9. WHERE SECTION OR SUBSECTION MONUMENTS ARE ENCOUNTERED, THE ENGINEER SHALL BE NOTIFIED BEFORE SUCH MONUMENTS ARE REMOVED. THE CONTRACTOR SHALL PROTECT AND CAREFULLY PRESERVE ALL MONUMENTS UNTIL AN AUTHORIZED SURVEYOR OR AGENT HAS WITNESSED OR OTHERWISE REFERENCED THEIR LOCATION. THE CONTRACTOR SHALL BE RESPONSIBLE FOR HAVING AN AUTHORIZED SURVEYOR RE-ESTABLISH ANY SECTION OR SUBSECTION MONUMENTS DESTROYED BY HIS OPERATIONS.
10. ALL SAW CUTS NECESSARY TO COMPLETE THE WORK DETAILED IN THESE PLANS, SHALL BE INCLUDED IN THE COST FOR THE VARIOUS PAY ITEMS INVOLVED. THE MINIMUM SAW CUT DEPTH IN THE PAVEMENT SHALL BE 1 1/2" UNLESS OTHERWISE SPECIFIED IN DETAILS SHOWN IN THE PLANS.
11. THE ENGINEER SHALL BE THE SOLE JUDGE CONCERNING CURING TIME FOR THE VARIOUS BITUMINOUS LIFTS.

12. ANY REFERENCES OR CALL-OUTS IN THESE PLANS TO "BITUMINOUS CONCRETE" SHALL BE INTERPRETED TO MEAN "HOT-MIX ASPHALT."
13. ANY EXISTING SIGNS THAT INTERFERE WITH CONSTRUCTION OPERATIONS SHALL BE REMOVED AND RELOCATED ONCE CONSTRUCTION HAS BEEN COMPLETED. THE CONTRACTOR SHALL RELOCATE THE SIGNS AT LOCATIONS DETERMINED BY THE ENGINEER. THIS WORK WILL NOT BE PAID FOR SEPARATELY, BUT SHALL BE CONSIDERED INCLUDED IN THE CONTRACT AND NO COMPENSATION ALLOWED.
14. PRIOR TO MILLING, THE RE SHALL MARK NPZ LOCATIONS. ALSO, NPZ SHALL BE FIELD VERIFIED BY OPS 14 DAYS PRIOR TO PLACEMENT OF FINAL PAVEMENT MARKINGS

1	COVER SHEET
2	GENERAL NOTES, INDEX OF SHEETS
3-5	SUMMARY OF QUANTITIES
6-7	TYPICAL SECTIONS
8-9	SCHEDULES OF QUANTITIES
10-14	PLAN SHEETS
15-19	PAVEMENT MARKING SHEETS
20-25	LIGHTING PLAN SHEETS
26	DETAIL SHEET

The following mixture requirements are applicable for this project:

Mixture Number	1	2	3	4
Mixture Use(s)	SURFACE	LEVELING BINDER	HMA SHLDR (BOTTOM LIFTS) & PAVEMENT PATCHING	HMA SHLDR (TOP 2") & INCIDENTAL SURFACE
AC/PG:	PG64-22	PG64-22	PG64-22	PG64-22
Design Air Voids:	4.0% @ N50	4.0% @ N50	4.0% @ N50	4.0% @ N50
Mixture Composition: (Gradation Mixture)	IL 9.5	IL 9.5	IL 19.0 or IL 19.0 CB	IL 9.5
Friction Aggregate:	MIX "D"	N/A	N/A	MIX "C"
Quality Management:	OCP	OCP	QC/OA	QC/OA
Sublot Size:	1000 Tons	800 Tons	N/A	N/A

COMMITMENTS:

THE FIELD/RESIDENT ENGINEER SHALL CONTACT STUDIES AND PLANS COVERING ANY MAJOR PLAN CHANGES TO MAKE SURE NO PREVIOUS COMMITMENTS (NOT LISTED) WERE MADE AFFECTING THE DESIGN, AND TO ALLOW IMPROVED DESIGN FOR THE FUTURE.

EXAMINED <u>March 3</u> 20 <u>15</u> <i>Ron Buchenbender</i> PROJECT IMPLEMENTATION ENGINEER
DISTRICT SIX
EXAMINED <u>March 9th</u> 20 <u>15</u> <i>John C. Myzangul</i> OPERATIONS ENGINEER
EXAMINED <u>March 10</u> 20 <u>15</u> <i>Jeffrey P. Myzangul</i> PROGRAM DEVELOPMENT ENGINEER

PPS # 0-00888-6004	
CONSTRUCTION CODE	
SAFETY 90/10 SANGAMON ROADWAY	SAFETY 90/10 SANGAMON ROADWAY
0021	0005
URBAN	URBAN

CODE NO.	ITEM	UNIT	TOTAL	URBAN	URBAN
20200600	EXCAVATING AND GRADING EXISTING SHOULDER	UNIT	124	124	
40600275	BITUMINOUS MATERIALS (PRIME COAT)	POUND	26,256		26,256
40600625	LEVELING BINDER (MACHINE METHOD), N50	TON	1,601		1,601
40600982	HOT-MIX ASPHALT SURFACE REMOVAL - BUTT JOINT	SQ YD	1,532		1,532
40600990	TEMPORARY RAMP	SQ YD	201		201
40603335	HOT-MIX ASPHALT SURFACE COURSE, MIX "D", N50	TON	3,202		3,202
40800050	INCIDENTAL HOT-MIX ASPHALT SURFACING	TON	99		99
44000155	HOT-MIX ASPHALT SURFACE REMOVAL, 1 1/2"	SQ YD	38,114		38,114
44200168	PAVEMENT PATCHING, TYPE II, 14 INCH	SQ YD	120	120	
48102100	AGGREGATE WEDGE SHOULDER, TYPE B	TON	552	552	
48203029	HOT-MIX ASPHALT SHOULDERS, 8"	SQ YD	7,462	7,462	
64200108	SHOULDER RUMBLE STRIPS, 8 INCH	FOOT	10,874	10,874	
67100100	MOBILIZATION	L SUM	1	1	

13

FILE NAME *	USER NAME *	DESIGNED -	REVISED -	STATE OF ILLINOIS DEPARTMENT OF TRANSPORTATION	SUMMARY OF QUANTITIES				F.A.P. R.T.E.	SECTION	COUNTY	TOTAL SHEETS	SHEET NO.
c:\p\work\p\dot\sparkg\0304019\0672091-wt-500.dgn		DRAWN -	REVISED -						71	(3) I-4, L, RS-6	SANGAMON	26	3
PLOT SCALE * 100.0000 / 1 in.		CHECKED -	REVISED -		SCALE:	SHEET	OF	SHEETS	STA.	TD STA.	CONTRACT NO. 72G91		
PLOT DATE * Mar-20-2015 10:49:01AM		DATE -	REVISED -		[ILLINOIS] FED. AID PROJECT								

PPS # 0-00888-6004	
CONSTRUCTION CODE	
SAFETY 90/10 SANGAMON ROADWAY	SAFETY 90/10 SANGAMON ROADWAY
0021 URBAN	0005 URBAN

CODE NO.	ITEM	UNIT	TOTAL	SAFETY 90/10 SANGAMON ROADWAY 0021 URBAN	SAFETY 90/10 SANGAMON ROADWAY 0005 URBAN
70100450	TRAFFIC CONTROL AND PROTECTION, STANDARD 701201	L SUM	1	0.5	0.5
70100460	TRAFFIC CONTROL AND PROTECTION, STANDARD 701306	L SUM	1		1
70100500	TRAFFIC CONTROL AND PROTECTION, STANDARD 701326	L SUM	1	1	
70300100	SHORT TERM PAVEMENT MARKING	FOOT	950	950	
70301000	WORK ZONE PAVEMENT MARKING REMOVAL	SQ FT	317	317	
* 78000300	THERMOPLASTIC PAVEMENT MARKING - LINE 5"	FOOT	23,874	23,874	
* 78000400	THERMOPLASTIC PAVEMENT MARKING - LINE 6"	FOOT	1,197	1,197	
* 78000500	THERMOPLASTIC PAVEMENT MARKING - LINE 8"	FOOT	1,953	1,953	
* 78000600	THERMOPLASTIC PAVEMENT MARKING - LINE 12"	FOOT	160	160	
* 78000650	THERMOPLASTIC PAVEMENT MARKING - LINE 24"	FOOT	83	83	
* 78003100	PREFORMED PLASTIC PAVEMENT MARKING, TYPE B - LETTERS AND SYMBOLS	SQ FT	324	324	
* 78003120	PREFORMED PLASTIC PAVEMENT MARKING, TYPE B - LINE 5"	FOOT	1,074	1,074	
* 78100100	RAISED REFLECTIVE PAVEMENT MARKER	EACH	112	112	
* 78200300	PRISMATIC CURB REFLECTOR	EACH	8	8	

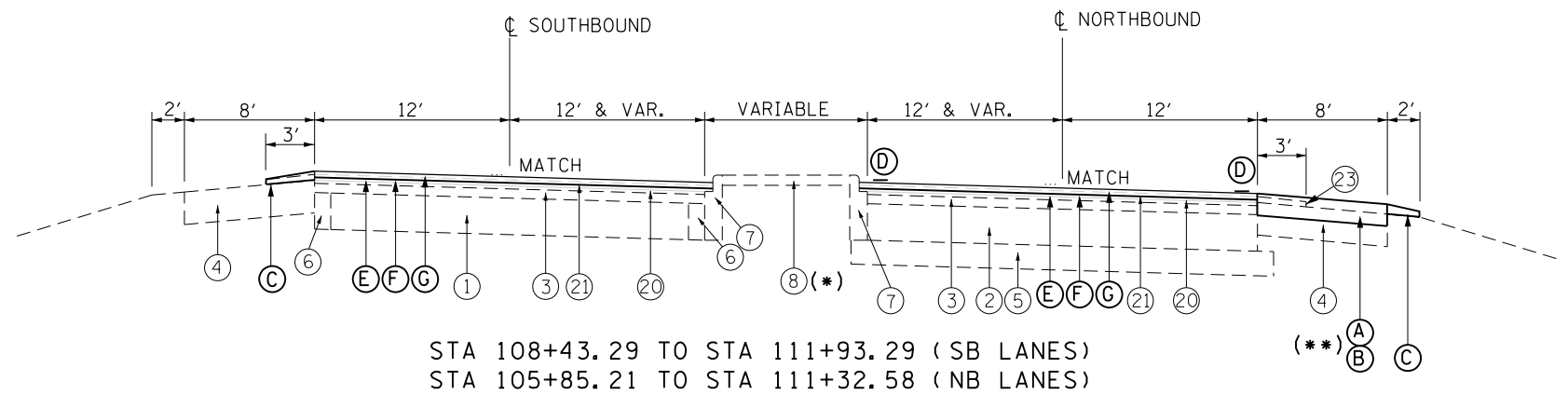
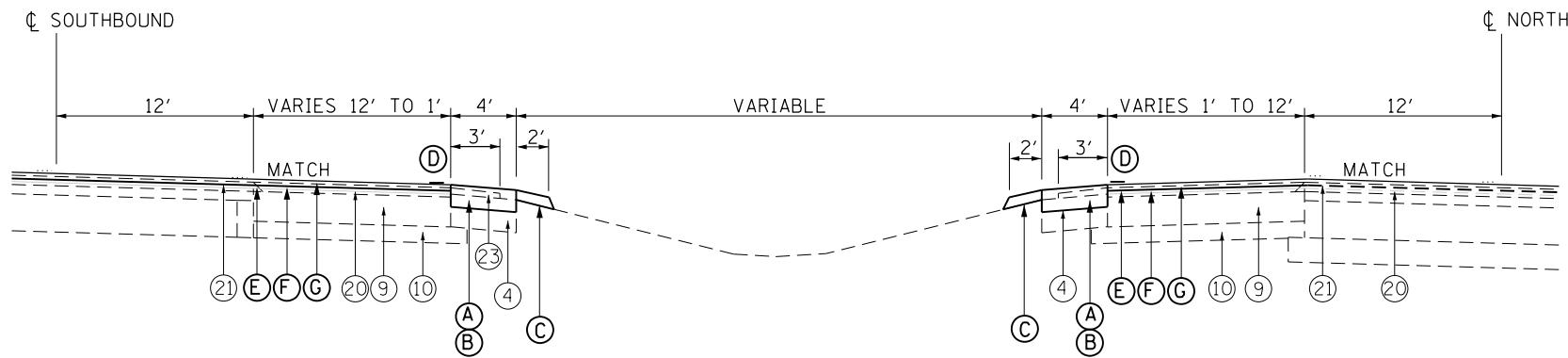
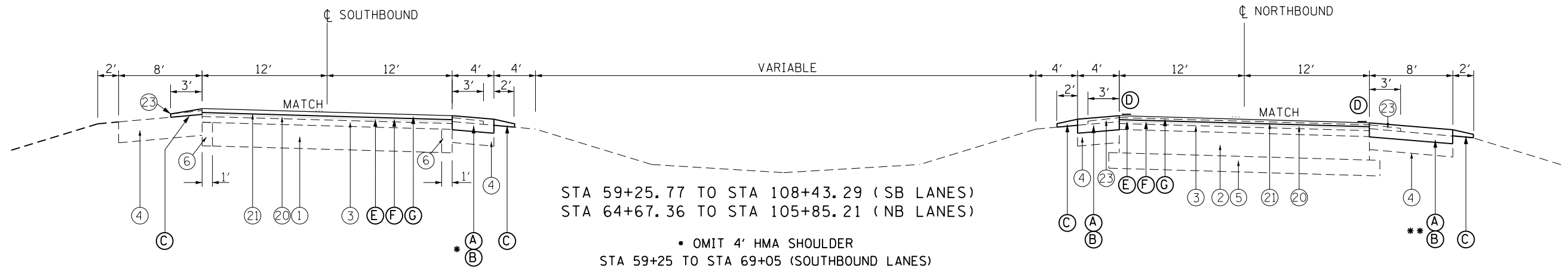
* SPECIALTY ITEM

FILE NAME : c:\pwork\pridat\eparkag\00304019\0072091.dwg	USER NAME : sparkag	DESIGNED -	REVISED -
Default	PLOT SCALE : 100.0000' / 1"	DRAWN -	REVISED -
	PLOT DATE : Mar-20-2015 10:49:02AM	CHECKED -	REVISED -
		DATE -	REVISED -

**STATE OF ILLINOIS
DEPARTMENT OF TRANSPORTATION**

SUMMARY OF QUANTITIES			
SCALE:	SHEET	OF	SHEETS
			STA.
			TO STA.

F.A.P. RTI	SECTION	COUNTY	TOTAL SHEETS	SHEET NO.
TI	(3) I-4, L, RS-6	SANGAMON	26	4
			CONTRACT NO. 72G91	
			ILLINOIS FED. AID PROJECT	



SHOULDER SLOPES

- (A) HIGH SIDE
WHEN THE SUPERELEVATION RATE OF THE PAVEMENT IS BETWEEN 0% AND 4%, THE SHOULDER SHALL BE SLOPED AT 4%. WHEN THE SUPERELEVATION RATE OF THE PAVEMENT EXCEEDS 4%, THE SHOULDER SHALL BE SLOPED SO THAT THE ALGEBRAIC DIFFERENCE BETWEEN PAVEMENT AND SHOULDER WILL NOT BE GREATER THAN 8%
- (B) LOW SIDE
SLOPE SHALL BE THE SAME AS THE SUPERELEVATION RATE

(*) MEDIAN SURFACE ENDS STA 109+85 (NB LANES)
CORREGATED MEDIAN FROM STA 109+85 TO 111+30 (NB LANES)

(**) 8' HMA SHOULDER ENDS @ STA 111+05 (NB LANES)

EXISTING LEGEND

- | | |
|--|--|
| <ul style="list-style-type: none"> 1. ORIGINAL 22' P.C. CONCRETE PAVEMENT (1940) 2. EXISTING P.C. CONCRETE BASE COURSE 9" (1962) 3. EXISTING BITUMINOUS SURFACE AND BINDER COURSE 3" (1962) 4. EXISTING AGGREGATE SHOULDER 8" (1962) 5. EXISTING SUB-BASE GRANULAR MATERIAL TYPE A 6" (1962) 6. EXISTING P.C. CONCRETE BASE COURSE WIDENING 9" (1962) 7. EXISTING CONCRETE CURB AND GUTTER (1962) 8. EXISTING P.C. CONCRETE MEDIAN SURFACE 2 1/2" OR P.C. CONCRETE MEDIAN TYPE B MODIFIED (SOLID) (1962) 9. EXISTING P.C. CONCRETE BASE 8" (1975) 10. EXISTING STABILIZED SUB-BASE 4" (1975) 11. EXISTING GRAVEL SHOULDER TYPE B (1962) | <ul style="list-style-type: none"> 12. EXISTING BITUMINOUS CONCRETE SURFACE 2" (1977) 13. EXISTING BITUMINOUS CONCRETE SURFACE 1 1/2" (1991) 14. EXISTING AGGREGATE SHOULDERS (PLACED AT VARIOUS TIMES - NO DEFINED THICKNESS) 15. EXISTING GUARDRAIL 16. EXISTING BITUMINOUS CONCRETE SURFACE 1 1/2" (1996) 17. EXISTING BITUMINOUS CONCRETE SHOULDER 8" (1996) 18. EXISTING AGGREGATE SHOULDER, TY. B 6" (1996) 20. EXISTING LEVELING BINDER (MACHINE METHOD), SUPERPAVE N 50 (3/4") (2005) 21. EXISTING BITUMINOUS CONCRETE SURFACE COURSE, SUPERPAVE, MIX "D" N50 (1 1/2") (2005) 22. EXISTING BITUMINOUS CONCRETE BASE COURSE WIDENING, SUPERPAVE 10 INCH (2005) 23. EXISTING AGGREGATE SHOULDERS, TYPE B (2005) |
|--|--|

PROPOSED LEGEND

- (A) PROPOSED EXCAVATING AND GRADING EXISTING SHOULDERS
- (B) PROPOSED HOT-MIX ASPHALT SHOULDERS, 8"
- (C) PROPOSED AGGREGATE WEDGE SHOULDER, TYPE B
- (D) PROPOSED THERMOPLASTIC PAVEMENT MARKING - LINE 5"
- (E) PROPOSED HOT-MIX ASPHALT SURFACE REMOVAL, 1 1/2"
- (F) PROPOSED LEVELING BINDER, 3/4"
- (G) PROPOSED HOT-MIX ASPHALT SURFACE COURSE, 1 1/2"

FILE NAME =	USER NAME = sparksgw	DESIGNED -	REVISED -	STATE OF ILLINOIS DEPARTMENT OF TRANSPORTATION	TYPICAL SECTIONS				F.A.P. RTE.	SECTION	COUNTY	TOTAL SHEETS	SHEET NO.			
Default	et:\pw\work\p\midot\sparksgw\10384019\0672091-sh-typical.dgn	DRAWN -	REVISED -		SCALE:	SHEET	OF	SHEETS	STA.	TO	STA.	71	(3) 1-4, L, RS-6	SANGAMON	26	6
	PLOT SCALE = 11.0000' / in.	CHECKED -	REVISED -													
	PLOT DATE = Mar-20-2015 10:52:38AM	DATE -	REVISED -													
												CONTRACT NO. 72G91		ILLINOIS FED. AID PROJECT		

PAVING								
	PAVT WIDTH (FOOT)	PAVT AREA (SY)	PRIME COAT (POUND)	MILLING 1.5" (SY)	LEVEL BINDER, 3/4" (TON)	BUTT JOINT (SY)	INCIDENTAL SURFACE (TON)	SURFACE 1.5" (TON)
NBL								
STA 64+67						83.33		
STA 64+67 TO STA 71+41	24	1,797.33	1,213.20	1,797.33	75.49			150.98
STA 71+41 TO STA 73+35	24 to 36	646.67	436.50	646.67	27.16			54.32
STA 73+35 TO STA 75+65	36	920.00	621.00	920.00	38.64			77.28
STA 75+65 TO STA 105+00	24	7,826.67	5,283.00	7,826.67	328.72			657.44
STA 105+00 TO STA 112+35	24 to 11	1,429.17	964.69	1,429.17	60.03			120.05
STA 112+35 TO STA 117+68	12	710.67	479.70	710.67	29.85			59.70
STA. EQ.: STA. 117+68.70 (S.B. CHAIN ENDS) = STA. 117+07.42 (N.B.)								
STA 117+07 TO STA 117+67	11	73.33	49.50	73.33	3.08			6.16
STA. EQ.: STA. 117+67.42 BK =STA. 98+15.41 AH								
STA 98+15 TO STA 103+00	11	592.78	400.13	592.78	24.90			49.79
STA 103+00						80.00		
SBL								
STA 59+26						120.00		
STA 59+26 TO STA 61+01	28 to 32	574.33	387.67	574.33	24.12			48.24
STA 61+01 TO STA 76+52	24	4,136.00	2,791.80	4,136.00	173.71			347.42
STA 65+00 GORE STA 67+24	VAR	1,389.67	938.03	1,389.67	58.37			116.73
STA 65+95						73.33		
STA 65+95 LT TURN LAN STA 69+26	18 & VAR	5,760.70	3,888.47	5,760.70	241.95			483.90
STA 75+57 X-OVER STA 76+52	VAR	460.78	311.03	460.78	19.35			38.71
STA 76+52 TO STA 78+14	36	648.00	437.40	648.00	27.22			54.43
STA 78+14 TO STA 80+63	24 to 36	830.00	560.25	830.00	34.86			69.72
STA 80+63 TO STA 108+40	24	7,405.33	4,998.60	7,405.33	311.02			622.05
STA 108+40 TO STA 110+45	24 to 28	592.22	399.75	592.22	24.87			49.75
STA 110+45 TO STA 111+89	25	400.00	270.00	400.00	16.80			33.60
STA 111+89 TO STA 117+68	27 to 12	1,254.50	846.79	1,254.50	52.69			105.38
STA. EQ.: STA. 117+68.70 (S.B. CHAIN ENDS) = STA. 117+07.42 (N.B.)								
STA 117+07 TO STA 117+67	11	73.33	49.50	73.33	3.08			6.16
STA. EQ.: STA. 117+67.42 BK =STA. 98+15.41 AH								
STA 98+15 TO STA 103+00	11	592.78	400.13	592.78	24.90			49.79
SIDEROADS								
GATLIN (RT)			133.70			297.11	24.96	
GATLIN (LT)			140.70			312.67	26.26	
COLT			174.85			388.56	32.64	
BISSELL (LT)			46.00			102.22	8.59	
BISSELL (RT)			33.58			74.61	6.27	
TOTALS			26,256.0	38,114.3	1,600.8	1,531.8	98.7	3,201.6

SHOULDER ITEMS							
	SHLDR WIDTH (FOOT)	EXC & GRADE EX SHLDR (UNIT)	HMA SHLDR, 8" (SY)	RUMBLE STRIPS, 8" (FOOT)			
NBL							
STA 64+25 TO STA 75+62	RT	8	11.37	1,010.67			
STA 64+67 TO STA 71+41	LT	4	6.74	299.56			
STA 71+41 TURN LANE STA 75+64	LT	4	4.23	188.00			
STA 76+53 TO STA 111+05	RT	8	34.52	3,068.44			
STA 76+52 TO STA 105+77	LT	4	29.25	1,300.00			
STA 112+37 TO STA 117+07	RT	4	4.7	208.89			
STA 117+07 TO STA 117+67	RT	4	0.60	26.67			
STA. EQ.: STA. 117+67.42 BK =STA. 98+15.41 AH							
STA 98+15 TO STA 101+44	RT	4	3.29	146.22			
STA 76+00 X-OVER		4	1.33	59.11			
COLT RD.	LT	4	0.61	27.11			
COLT RD.	RT	4	0.62	27.56			
SBL							
STA 69+05 TO STA 75+50	RT	4	6.45	286.67			
STA 76+52 TURN LANE STA 78+15	RT	4	1.63	72.44			
STA 78+15 TURN LANE STA 80+38	RT	4 to 1	2.23	61.94			
STA 76+68 TURN LANE STA 78+40	LT	4	1.72	76.44			
STA 78+40 TURN LANE STA 80+08	LT	4 to 1	1.68	46.67			
STA 108+91 TO STA 110+29	LT	1 to 4	1.38	38.33			
STA 110+29 TO STA 117+68	LT	4	7.39	328.44			
STA. EQ.: STA. 117+68.70 (S.B. CHAIN ENDS) = STA. 117+07.42 (N.B.)							
STA 117+07 TO STA 117+67	LT	4	0.60	26.67			
STA. EQ.: STA. 117+67.42 BK =STA. 98+15.41 AH							
STA 98+15 TO STA 100+60	LT	4	2.45	108.89			
COLT RD.	LT/RT	4	1.2	53.33			
TOTALS			124.0	7,462.1			

AGG WEDGE SHOULDERS						
	SHLDR WIDTH (FOOT)	AVG THICKNESS (INCHES)	AGG SHLDR (TON)			
NBL						
STA 64+26 TO STA 75+66	RT	2	26.60			
STA 64+67 TO STA 75+68	LT	2	25.69			
STA 76+49 TO STA 111+08	RT	2	80.71			
STA 76+47 TO STA 105+77	LT	2	68.37			
STA 112+30 TO STA 117+07	RT	4	22.26			
STA 117+07 TO STA 117+67	RT	4	2.80			
STA. EQ.: STA. 117+67.42 BK =STA. 98+15.41 AH						
STA 98+15 TO STA 101+49	RT	4	15.59			
STA 102+29 TO STA 103+00	RT	4	3.31			
SBL						
STA 61+19 TO STA 75+48	LT	3	50.02			
STA 69+10 TO STA 75+60	RT	2	15.17			
STA 76+44 TO STA 108+40	RT	2	74.57			
STA 78+90 TO STA 108+00	LT	3	101.85			
STA 108+00 TO STA 108+91	LT	3 to 4	3.72			
STA 108+91 TO STA 117+68	LT	4	40.93			
STA. EQ.: STA. 117+68.70 (S.B. CHAIN ENDS) = STA. 117+07.42 (N.B.)						
STA 117+07 TO STA 117+67	LT	4	2.80			
STA. EQ.: STA. 117+67.42 BK =STA. 98+15.41 AH						
STA 98+15 TO STA 100+64	LT	4	11.62			
STA 101+80 TO STA 103+00	LT	4	5.60			
TOTALS			551.6			

PAVEMENT MARKING - 5"							
				TYPE	COLOR	THERMO PLASTIC (FOOT)	PRE-FORM LENGTH (FOOT)
NBL							
STA 64+67	TO	STA 106+73		SKIP DASH	WHITE		1,051.5
STA 64+67	TO	STA 75+40	RT	EDGE LINE	WHITE	1,073.0	
STA 64+67	TO	STA 75+64	LT	EDGE LINE	YELLOW	1,097.0	
STA 76+52	TO	STA 111+37	LT	EDGE LINE	YELLOW	3,485.0	
STA 76+77	TO	STA 111+04	RT	EDGE LINE	WHITE	3,427.0	
STA 111+98	TO	STA 115+62		MEDIAN	DBL. YELLOW	728.0	
STA 115+62	TO	STA 117+67		CENTERLINE	DBL. YELLOW	410.0	
STA 112+37	TO	STA 117+67	RT	EDGE LINE	WHITE	530.0	
STA. EQ.: STA. 117+67.42 BK =STA. 98+15.41 AH							
STA 98+15	TO	STA 101+39	RT	EDGE LINE	WHITE	324.0	
STA 98+15	TO	STA 101+07		MEDIAN	DBL. YELLOW	584.0	
STA 102+10	TO	STA 103+00		SKIP DASH	YELLOW		22.5
STA 102+29	TO	STA 103+00	RT	EDGE LINE	WHITE	71.0	
STA 76+00	X-OVER			EDGE LINE	YELLOW	163.0	
SBL							
STA 59+26	TO	STA 75+85	LT	EDGE LINE	WHITE	1,659.0	
STA 65+96	TO	STA 75+50	RT	EDGE LINE	YELLOW	954.0	
STA 76+68	TO	STA 108+00	RT	EDGE LINE	YELLOW	3,132.0	
STA 76+68	TO	STA 117+68	LT	EDGE LINE	WHITE	4,100.0	
STA 108+00	TO	STA 112+00		MEDIAN	DBL. YELLOW	800.0	
STA 112+58	TO	STA 116+23		MEDIAN	DBL. YELLOW	730.0	
STA. EQ.: STA. 117+68.70 (S.B. CHAIN ENDS) = STA. 117+07.42 (N.B.)							
STA 117+07	TO	STA 117+67	LT	EDGE LINE	WHITE	60.0	
STA. EQ.: STA. 117+67.42 BK =STA. 98+15.41 AH							
STA 98+15	TO	STA 100+56	LT	EDGE LINE	WHITE	241.0	
STA 101+80	TO	STA 103+00	LT	EDGE LINE	WHITE	120.0	
SIDEROADS							
GATLIN			LT	CENTER LINE	DBL. YELLOW	54.0	
GATLIN			RT	CENTER LINE	DBL. YELLOW	68.0	
COLT			RT	CENTER LINE	DBL. YELLOW	64.0	
TOTALS						23,874.0	1,074.0

PAVEMENT MARKING - 6"						
				TYPE	COLOR	THERMO PLASTIC (FOOT)
NBL						
STA 71+41	TO	STA 73+36	LT	MINI SKIP DASH	WHITE	65.0
STA 73+36	TO	STA 75+81	LT	LANE LINE	WHITE	245.0
STA 75+81	TO	STA 76+52	LT	MINI SKIP DASH	WHITE	24.0
STA 107+00	TO	STA 111+37	LT	MINI SKIP DASH	WHITE	146.0
SBL						
STA 67+24	TO	STA 69+33	RT	MINI SKIP DASH	WHITE	70.0
STA 75+54	TO	STA 76+31	RT	MINI SKIP DASH	WHITE	26.0
STA 76+31	TO	STA 78+15	LT	LANE LINE	WHITE	184.0
STA 76+31	TO	STA 78+15	RT	LANE LINE	WHITE	184.0
STA 78+15	TO	STA 80+67	LT	MINI SKIP DASH	WHITE	84.0
STA 78+15	TO	STA 80+67	RT	MINI SKIP DASH	WHITE	84.0
STA 112+59	TO	STA 113+06	RT	LANE LINE	WHITE	47.0
STA 113+06	TO	STA 114+20	LT	MINI SKIP DASH	WHITE	38.0
TOTALS						1,197.0

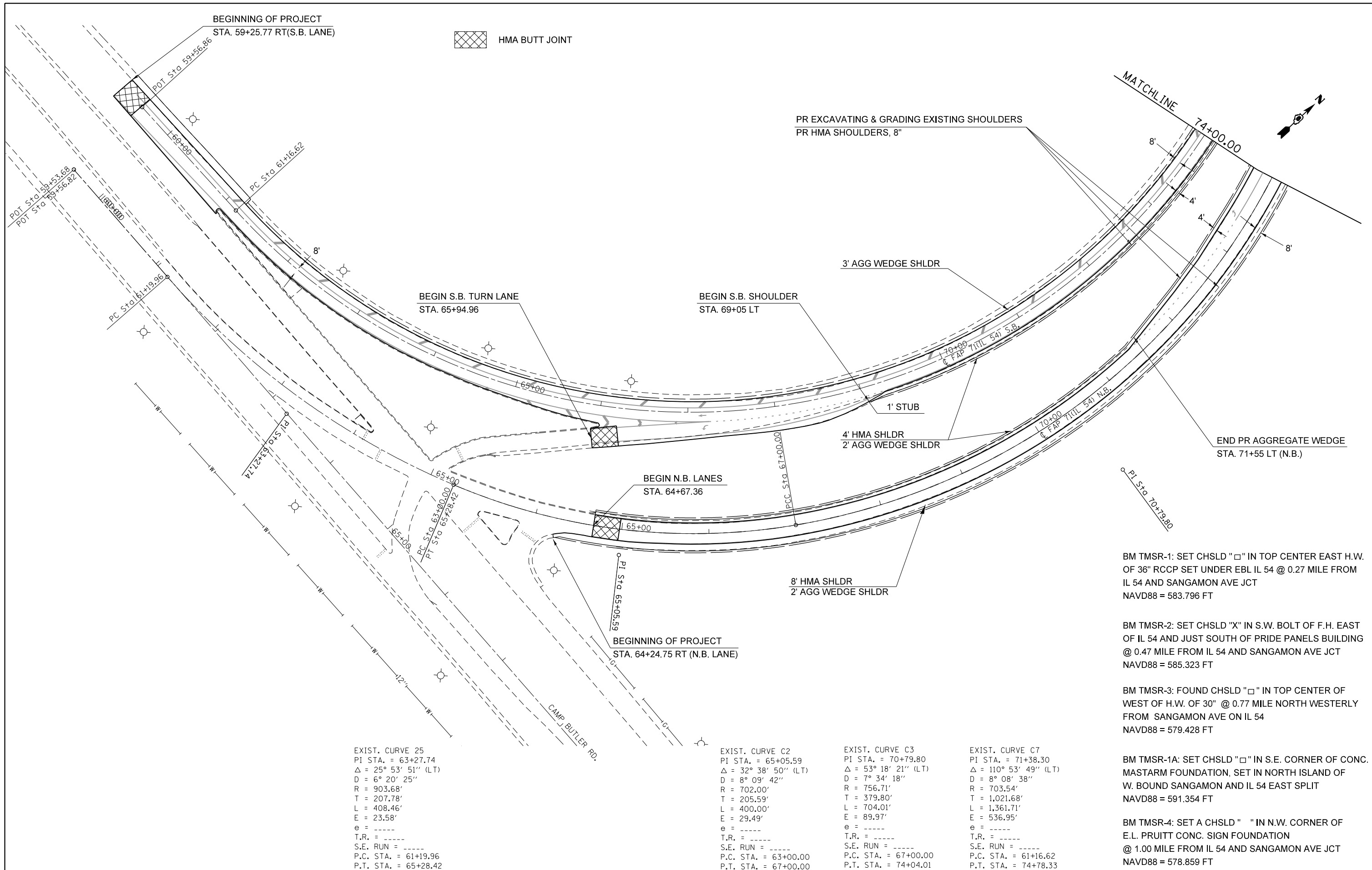
PAVEMENT MARKING - LETTERS & SYMBOLS				
		TYPE	COLOR	PRE-FORM AREA (SF)
NBL				
STA 73+42	LT	LT TURN ARROW	WHITE	15.6
STA 74+50	LT	LT TURN ARROW	WHITE	15.6
STA 75+40	LT	LT TURN ARROW	WHITE	15.6
STA 104+48	LT	LANE DROP ARROW	WHITE	41.5
STA 106+81	LT	LANE DROP ARROW	WHITE	41.5
SBL				
STA 67+16	RT	THRU ARROW	WHITE	11.5
STA 67+19	RT	LT TURN ARROW	WHITE	15.6
STA 75+23	RT	THRU ARROW	WHITE	11.5
STA 76+64	LT	RT TURN ARROW	WHITE	15.6
STA 76+64	RT	THRU ARROW	WHITE	11.5
STA 76+64	RT	LT TURN ARROW	WHITE	15.6
STA 77+35	LT	RT TURN ARROW	WHITE	15.6
STA 77+35	RT	LT TURN ARROW	WHITE	15.6
STA 78+09	LT	RT TURN ARROW	WHITE	15.6
STA 78+09	RT	THRU ARROW	WHITE	11.5
STA 78+09	RT	LT TURN ARROW	WHITE	15.6
STA 107+73		THRU ARROW	WHITE	11.5
STA 111+30		THRU ARROW	WHITE	11.5
STA 112+80	RT	LT TURN ARROW	WHITE	15.6
TOTALS				323.6

PAVEMENT MARKING - 8"						
				TYPE	COLOR	THERMO PLASTIC (FOOT)
SBL						
STA 59+26	TO	STA 61+04	RT	GORE	WHITE	178.0
STA 59+26	TO	STA 67+24	RT	GORE	WHITE	798.0
STA 61+06	TO	STA 75+45	LT	DIAGONAL	WHITE	262.5
STA 64+67	TO	STA 65+70	RT	DIAGONAL	WHITE	20.8
STA 65+93	TO	STA 67+24	RT	GORE	WHITE	131.0
STA 80+98	TO	STA 111+80	LT	DIAGONAL	WHITE	315.0
STA 80+98	TO	STA 107+50	RT	DIAGONAL	YELLOW	248.0
TOTALS						1,953.3

PAVEMENT MARKING - 12"						
				TYPE	COLOR	THERMO PLASTIC (FOOT)
SBL						
STA 66+11	TO	STA 66+87	GORE	CHEVRON	WHITE	30.6
STA 108+16	TO	STA 111+93	RT	DIAGONAL	YELLOW	128.9
TOTALS						159.5

PAVEMENT MARKING - 24"			
		TYPE	THERMO PLASTIC (FOOT)
GATLIN	LT	STOP BAR	29.0
GATLIN	RT	STOP BAR	26.5
COLT	RT	STOP BAR	27.3
TOTALS			82.8

PRISMATIC CURB REFLECTORS			
			REFLECTOR (EACH)
SBL			
STA 61+0	TO	STA 62+30	8
TOTALS			8



HMA BUTT JOINT

PR EXCAVATING & GRADING EXISTING SHOULDERS
PR HMA SHOULDERS, 8"

MATCHLINE
74+00.00

END PR AGGREGATE WEDGE
STA. 71+55 LT (N.B.)

BM TMSR-1: SET CHSLD "□" IN TOP CENTER EAST H.W. OF 36" RCCP SET UNDER EBL IL 54 @ 0.27 MILE FROM IL 54 AND SANGAMON AVE JCT
NAVD88 = 583.796 FT

BM TMSR-2: SET CHSLD "X" IN S.W. BOLT OF F.H. EAST OF IL 54 AND JUST SOUTH OF PRIDE PANELS BUILDING @ 0.47 MILE FROM IL 54 AND SANGAMON AVE JCT
NAVD88 = 585.323 FT

BM TMSR-3: FOUND CHSLD "□" IN TOP CENTER OF WEST OF H.W. OF 30" @ 0.77 MILE NORTH WESTERLY FROM SANGAMON AVE ON IL 54
NAVD88 = 579.428 FT

BM TMSR-1A: SET CHSLD "□" IN S.E. CORNER OF CONC. MASTARM FOUNDATION, SET IN NORTH ISLAND OF W. BOUND SANGAMON AND IL 54 EAST SPLIT
NAVD88 = 591.354 FT

BM TMSR-4: SET A CHSLD " " IN N.W. CORNER OF E.L. PRUITT CONC. SIGN FOUNDATION @ 1.00 MILE FROM IL 54 AND SANGAMON AVE JCT
NAVD88 = 578.859 FT

EXIST. CURVE 25
PI STA. = 63+27.74
Δ = 25° 53' 51" (LT)
D = 6° 20' 25"
R = 903.68'
T = 207.78'
L = 408.46'
E = 23.58'
e = -----
T.R. = -----
S.E. RUN = -----
P.C. STA. = 61+19.96
P.T. STA. = 65+28.42

EXIST. CURVE C2
PI STA. = 65+05.59
Δ = 32° 38' 50" (LT)
D = 8° 09' 42"
R = 702.00'
T = 205.59'
L = 400.00'
E = 29.49'
e = -----
T.R. = -----
S.E. RUN = -----
P.C. STA. = 63+00.00
P.T. STA. = 67+00.00

EXIST. CURVE C3
PI STA. = 70+79.80
Δ = 53° 18' 21" (LT)
D = 7° 34' 18"
R = 756.71'
T = 379.80'
L = 704.01'
E = 89.97'
e = -----
T.R. = -----
S.E. RUN = -----
P.C. STA. = 67+00.00
P.T. STA. = 74+04.01

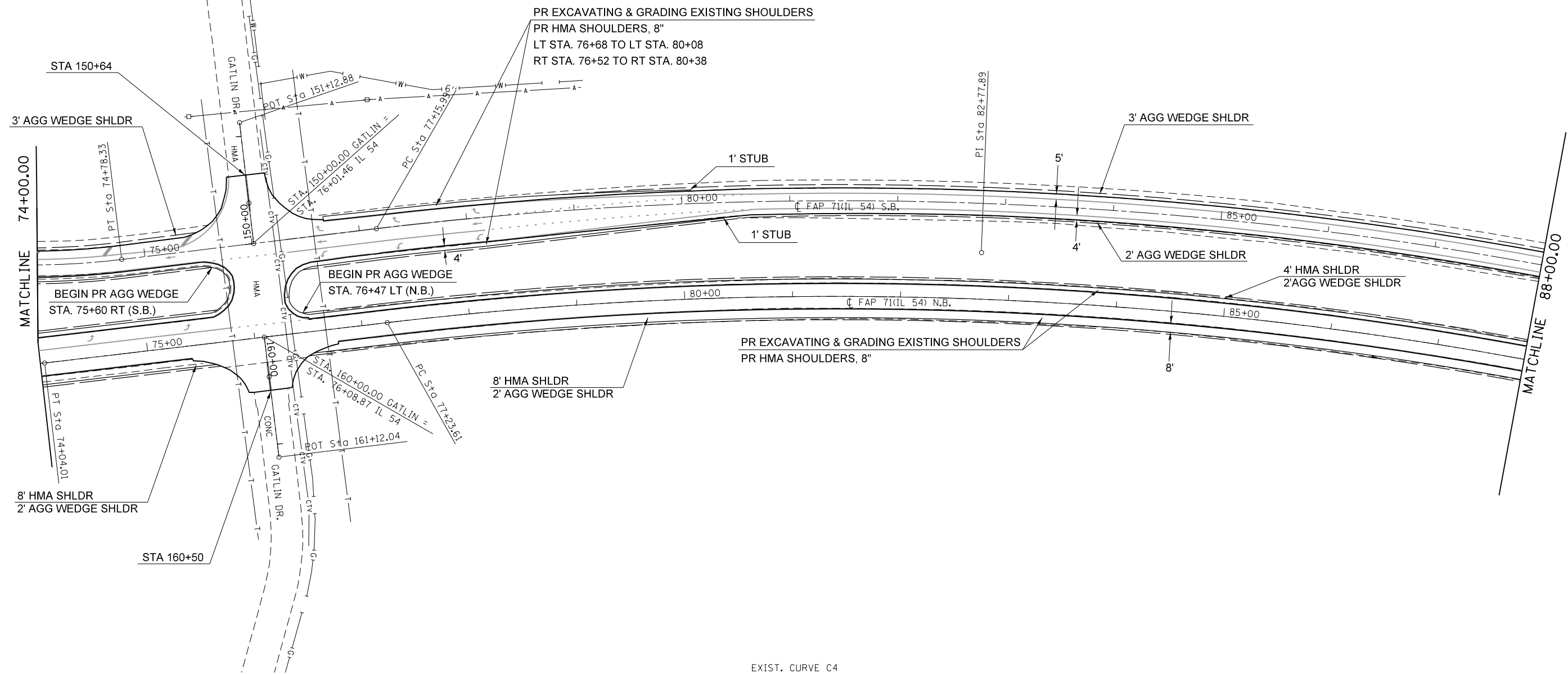
EXIST. CURVE C7
PI STA. = 71+38.30
Δ = 110° 53' 49" (LT)
D = 8° 08' 38"
R = 703.54'
T = 1,021.68'
L = 1,361.71'
E = 536.95'
e = -----
T.R. = -----
S.E. RUN = -----
P.C. STA. = 61+16.62
P.T. STA. = 74+78.33

FILE NAME =	USER NAME = sparksgw	DESIGNED -	REVISED -
ct:\pw\work\p\idot\sparksgw\10384019\0672091-SHT-PLAN.DGN		DRAWN -	REVISED -
Default	PLOT SCALE = 100.0000' / 1in.	CHECKED -	REVISED -
	PLOT DATE = Mar-20-2015 10:52:47AM	DATE -	REVISED -

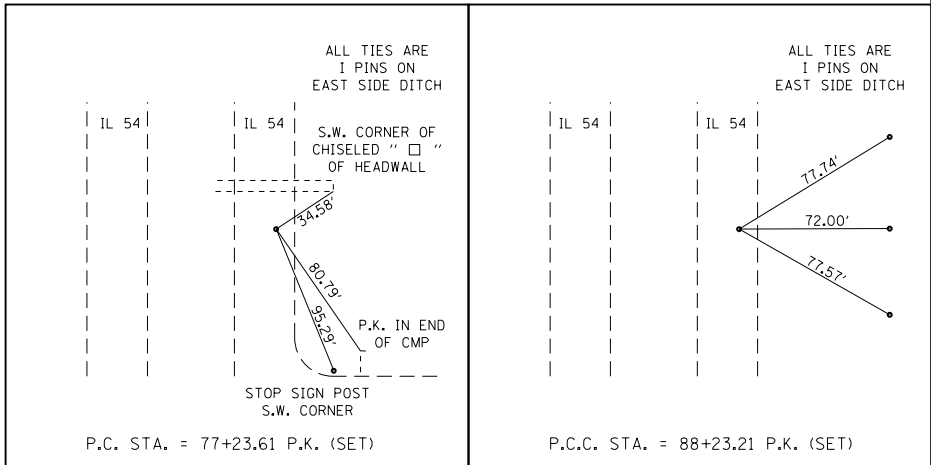
**STATE OF ILLINOIS
DEPARTMENT OF TRANSPORTATION**

PLAN SHEETS			
SCALE:	SHEET 1	OF 5 SHEETS	STA. TO STA.

F.A.P. RTE.	SECTION	COUNTY	TOTAL SHEETS	SHEET NO.
71	(3) I-4, L, RS-6	SANGAMON	26	10
CONTRACT NO. 72G91			ILLINOIS FED. AID PROJECT	



EXIST. CURVE C4
 PI STA. = 82+77.89
 $\Delta = 17^\circ 49' 19''$ (RT)
 $D = 1^\circ 37' 15''$
 $R = 3,535.13'$
 $T = 554.28'$
 $L = 1,099.60'$
 $E = 43.19'$
 $e = \text{-----}$
 $T.R. = \text{-----}$
 $S.E. \text{ RUN} = \text{-----}$
 P.C. STA. = 77+23.61
 P.T. STA. = 88+23.21

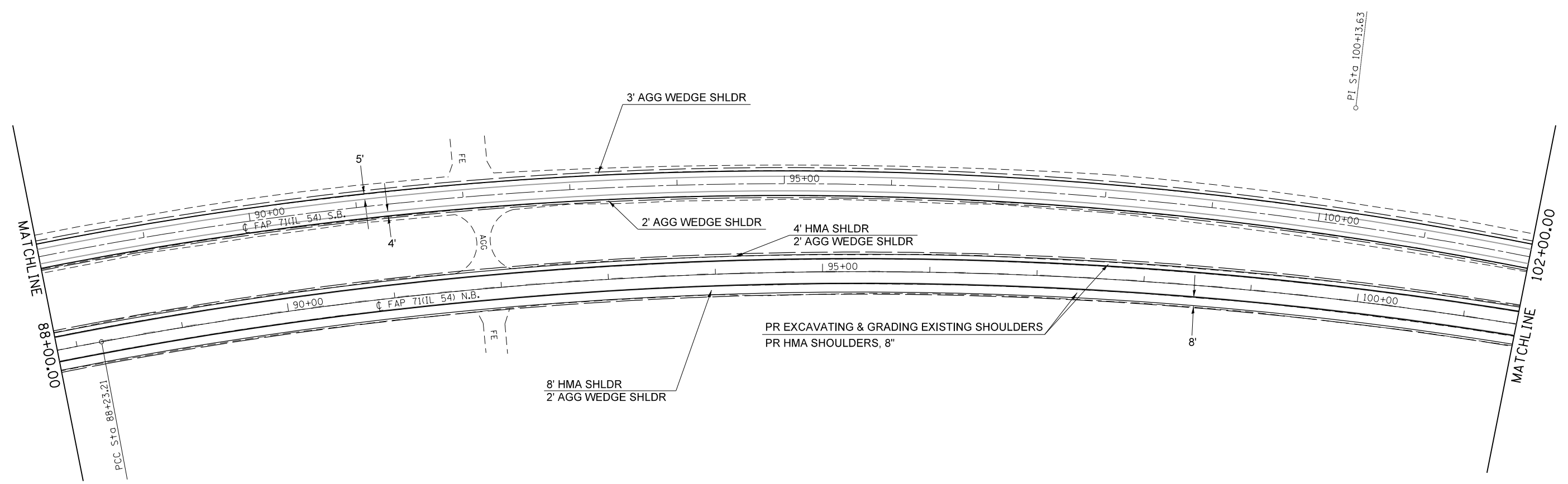


FILE NAME =	USER NAME = sparksgw	DESIGNED -	REVISED -
c:\pwork\pwork\sparksgw\10384019\0672091-SHT-PLAN.DGN		DRAWN -	REVISED -
Default	PLOT SCALE = 100.0000' / 1in.	CHECKED -	REVISED -
	PLOT DATE = Mar-20-2015 10:52:49AM	DATE -	REVISED -

**STATE OF ILLINOIS
 DEPARTMENT OF TRANSPORTATION**

PLAN SHEET			
SCALE:	SHEET 2	OF 5 SHEETS	STA. TO STA.

F.A.P. RTE.	SECTION	COUNTY	TOTAL SHEETS	SHEET NO.
71	(3) I-4, L, RS-6	SANGAMON	26	11
CONTRACT NO. 72G91				
ILLINOIS FED. AID PROJECT				



EXIST. CURVE C8
 PI STA. = 99+90.71
 $\Delta = 64^\circ 52' 19''$ (RT)
 $D = 1^\circ 36' 03''$
 $R = 3,579.40'$
 $T = 2,274.72'$
 $L = 4,052.71'$
 $E = 661.64'$
 $e = \text{-----}$
 $T.R. = \text{-----}$
 $S.E. \text{ RUN} = \text{-----}$
 $P.C. \text{ STA.} = 77+15.99$
 $P.T. \text{ STA.} = 117+68.70$

EXIST. CURVE C5
 PI STA. = 100+13.63
 $\Delta = 34^\circ 17' 11''$ (RT)
 $D = 1^\circ 29' 05''$
 $R = 3,859.18'$
 $T = 1,190.42'$
 $L = 2,309.37'$
 $E = 179.43'$
 $e = \text{-----}$
 $T.R. = \text{-----}$
 $S.E. \text{ RUN} = \text{-----}$
 $P.C. \text{ STA.} = 88+23.21$
 $P.T. \text{ STA.} = 111+32.58$

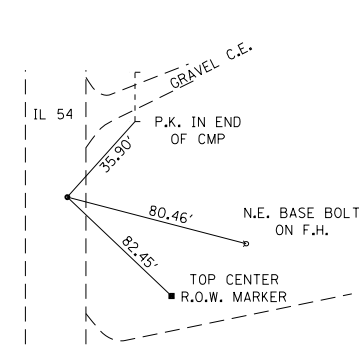
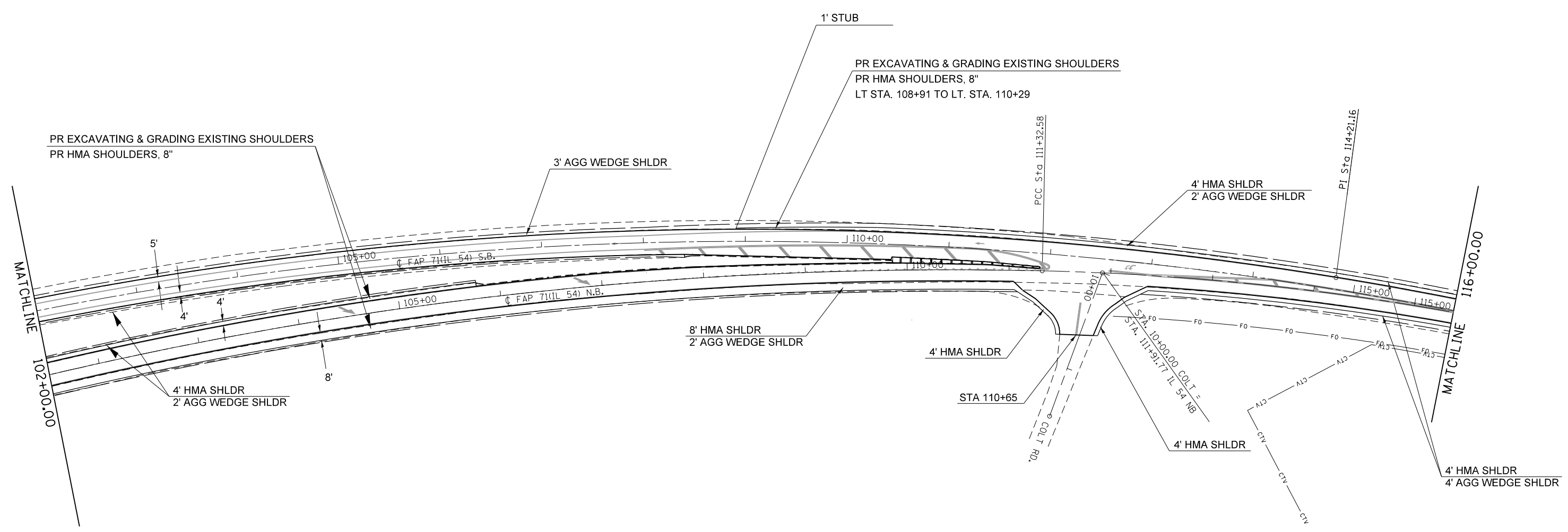
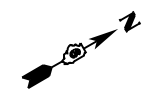
FILE NAME =	USER NAME = sparksgw	DESIGNED -	REVISED -
c:\pw\work\pwidot\sparksgw\10384019\0672091-SHT-PLAN.DGN		DRAWN -	REVISED -
Default	PLOT SCALE = 100.0000' / in.	CHECKED -	REVISED -
	PLOT DATE = Mar-20-2015 10:52:50AM	DATE -	REVISED -

**STATE OF ILLINOIS
 DEPARTMENT OF TRANSPORTATION**

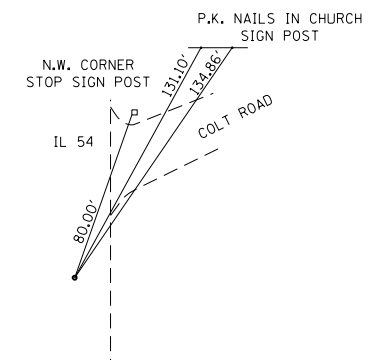
PLAN SHEET

SCALE: SHEET 3 OF 5 SHEETS STA. TO STA.

F.A.P. RTE.	SECTION	COUNTY	TOTAL SHEETS	SHEET NO.
71	(3) I-4, L, RS-6	SANGAMON	26	12
CONTRACT NO. 72G91			ILLINOIS FED. AID PROJECT	



P.T. STA. = 103+05.94 P.K. (SET)



P.C.C. STA. = 111+32.58 P.K. (SET)

EXIST. CURVE C6
 PI STA. = 114+21.16
 $\Delta = 12^\circ 35' 32''$ (RT)
 $D = 2^\circ 11' 26''$
 $R = 2,615.56'$
 $T = 288.58'$
 $L = 574.84'$
 $E = 15.87'$
 $e = \text{-----}$
 $T.R. = \text{-----}$
 $S.E. \text{ RUN} = \text{-----}$
 P.C. STA. = 111+32.58
 P.T. STA. = 117+07.42

FILE NAME =	USER NAME = sparksgw	DESIGNED -	REVISED -
ct:\pw\work\p\dot\sparksgw\10384019\0672091-SHT-PLAN.DGN		DRAWN -	REVISED -
Default	PLOT SCALE = 100.0000' / 1in.	CHECKED -	REVISED -
	PLOT DATE = Mar-20-2015 10:52:51AM	DATE -	REVISED -

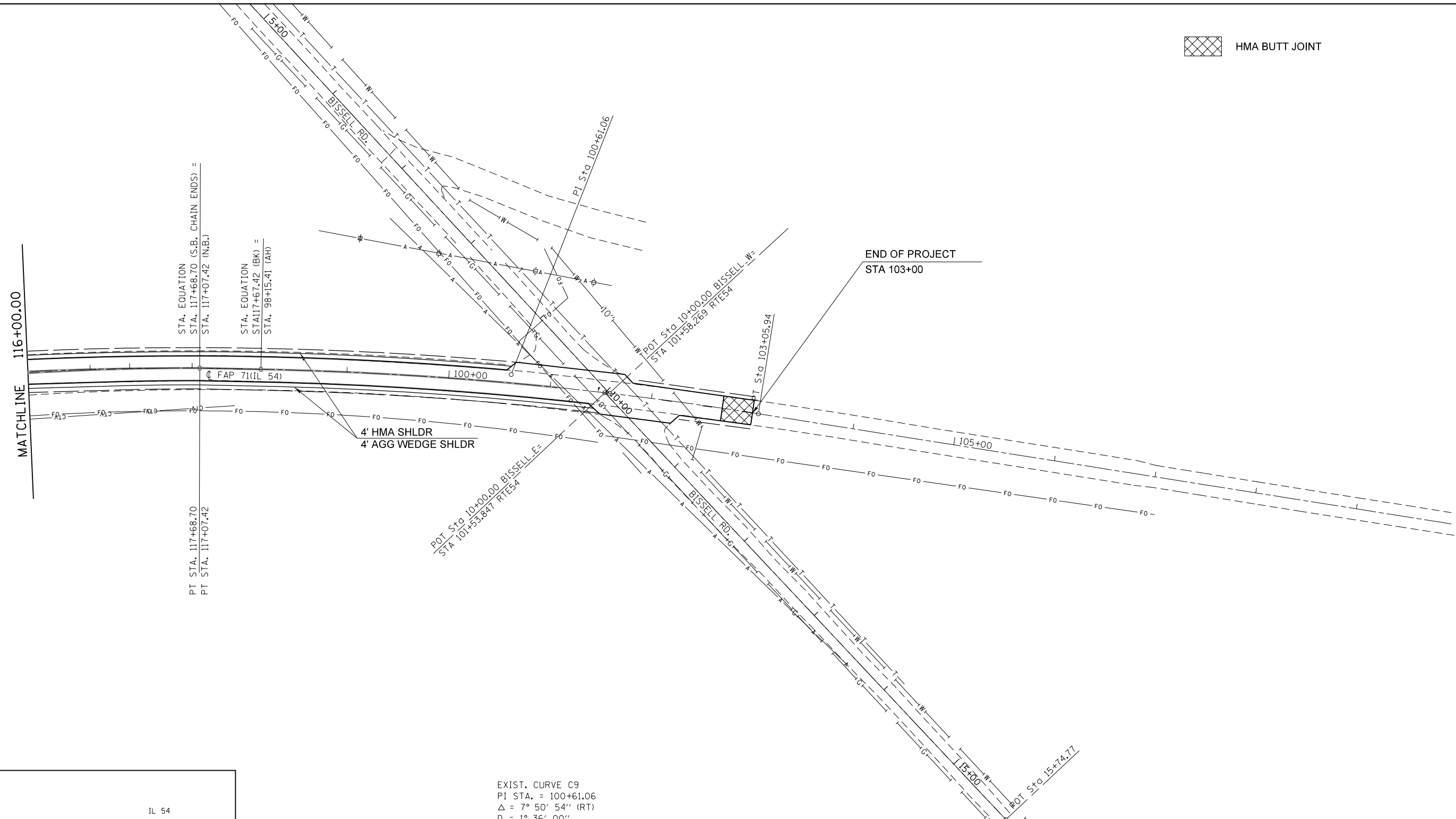
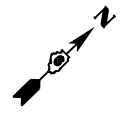
**STATE OF ILLINOIS
 DEPARTMENT OF TRANSPORTATION**

PLAN SHEET

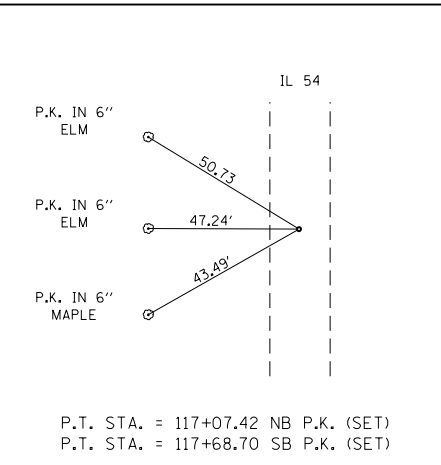
SCALE: SHEET 4 OF 5 SHEETS STA. TO STA.

F.A.P. RTE.	SECTION	COUNTY	TOTAL SHEETS	SHEET NO.
71	(3) I-4, L, RS-6	SANGAMON	26	13
CONTRACT NO. 72G91				
ILLINOIS FED. AID PROJECT				

HMA BUTT JOINT



EXIST. CURVE C9
 PI STA. = 100+61.06
 $\Delta = 7^\circ 50' 54''$ (RT)
 $D = 1^\circ 36' 00''$
 $R = 3,581.12'$
 $T = 245.65'$
 $L = 490.53'$
 $E = 8.42'$
 $e = \text{-----}$
 $T.R. = \text{-----}$
 $S.E. RUN = \text{-----}$
 $P.C. STA. = 98+15.41$
 $P.T. STA. = 103+05.94$



FILE NAME =	USER NAME = sparksgw	DESIGNED -	REVISED -
ci:\pw\work\p\dot\sparksgw\10384019\0672091-SHT-PLAN.DGN		DRAWN -	REVISED -
Default	PLOT SCALE = 100.0000' / 1in.	CHECKED -	REVISED -
	PLOT DATE = Mar-20-2015 10:52:52AM	DATE -	REVISED -

**STATE OF ILLINOIS
 DEPARTMENT OF TRANSPORTATION**

PLAN SHEET

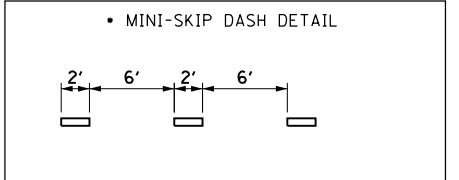
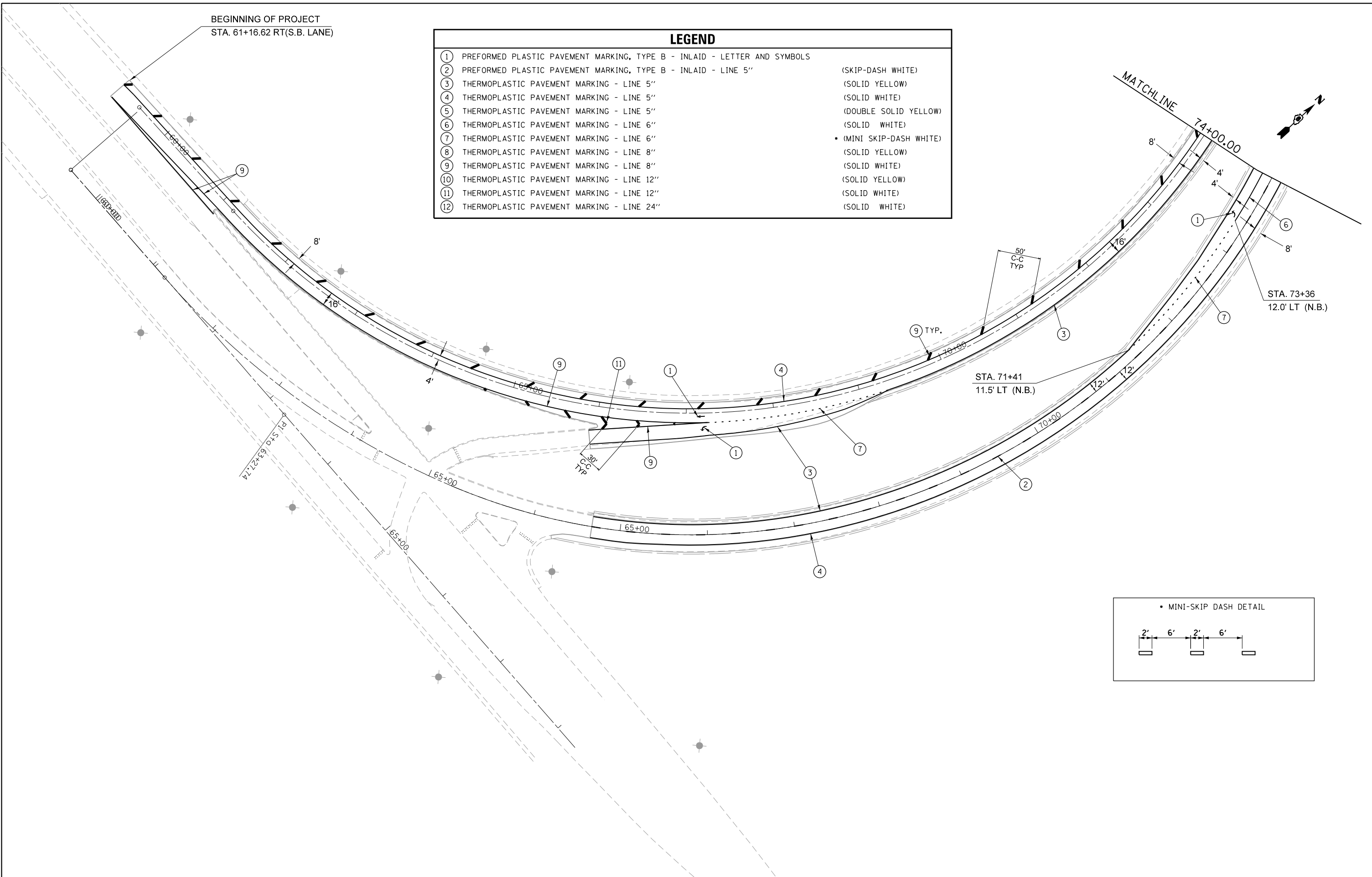
SCALE: SHEET 5 OF 5 SHEETS STA. TO STA.

F.A.P. RTE.	SECTION	COUNTY	TOTAL SHEETS	SHEET NO.
71	(3) I-4, L, RS-6	SANGAMON	26	14
CONTRACT NO. 72G91				

ILLINOIS FED. AID PROJECT

BEGINNING OF PROJECT
STA. 61+16.62 RT(S.B. LANE)

LEGEND		
①	PREFORMED PLASTIC PAVEMENT MARKING, TYPE B - INLAID - LETTER AND SYMBOLS	(SKIP-DASH WHITE)
②	PREFORMED PLASTIC PAVEMENT MARKING, TYPE B - INLAID - LINE 5"	(SOLID YELLOW)
③	THERMOPLASTIC PAVEMENT MARKING - LINE 5"	(SOLID WHITE)
④	THERMOPLASTIC PAVEMENT MARKING - LINE 5"	(DOUBLE SOLID YELLOW)
⑤	THERMOPLASTIC PAVEMENT MARKING - LINE 5"	(SOLID WHITE)
⑥	THERMOPLASTIC PAVEMENT MARKING - LINE 6"	(SOLID WHITE)
⑦	THERMOPLASTIC PAVEMENT MARKING - LINE 6"	• (MINI SKIP-DASH WHITE)
⑧	THERMOPLASTIC PAVEMENT MARKING - LINE 8"	(SOLID YELLOW)
⑨	THERMOPLASTIC PAVEMENT MARKING - LINE 8"	(SOLID WHITE)
⑩	THERMOPLASTIC PAVEMENT MARKING - LINE 12"	(SOLID YELLOW)
⑪	THERMOPLASTIC PAVEMENT MARKING - LINE 12"	(SOLID WHITE)
⑫	THERMOPLASTIC PAVEMENT MARKING - LINE 24"	(SOLID WHITE)

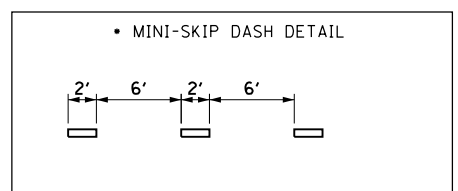
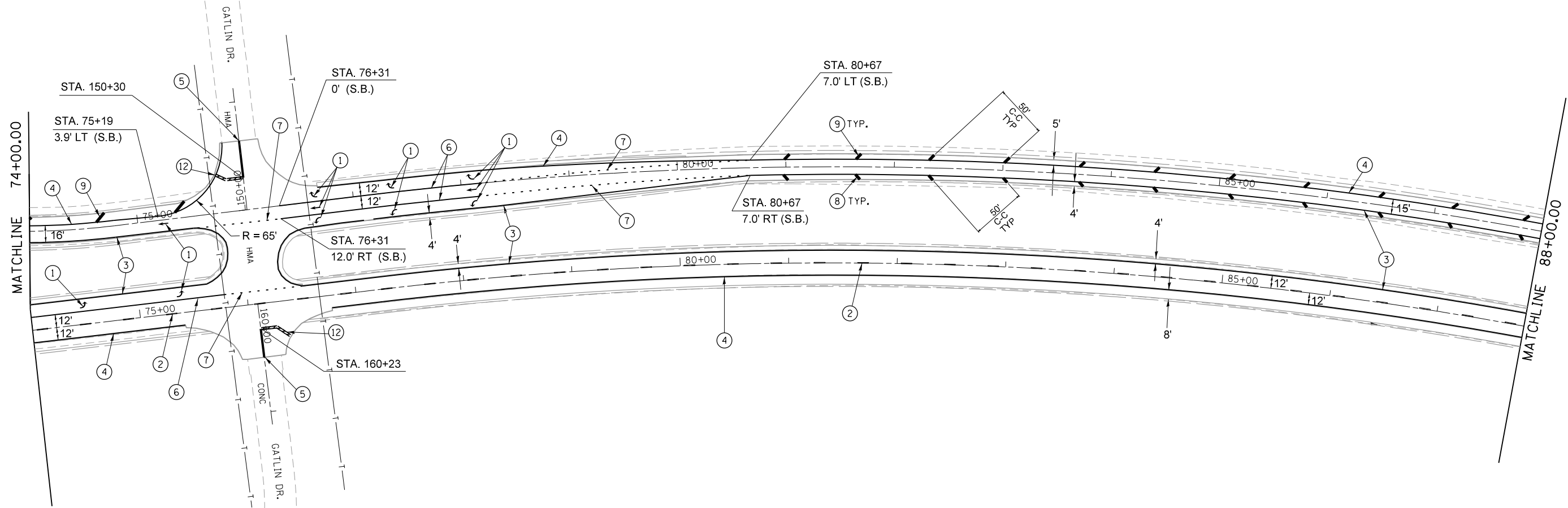


FILE NAME =	USER NAME = sparksgw	DESIGNED -	REVISED -
c:\pw\work\p1dot\sparksgw\10384019\0672091-SHT-PMK.DGN		DRAWN -	REVISED -
Default	PLOT SCALE = 100.0000' / in.	CHECKED -	REVISED -
	PLOT DATE = Mar-20-2015 10:52:55AM	DATE -	REVISED -

**STATE OF ILLINOIS
DEPARTMENT OF TRANSPORTATION**

PAVEMENT MARKING SHEETS			
SCALE:	SHEET	OF	SHEETS
	1	5	
	TO STA.		

F.A.P. RTE.	SECTION	COUNTY	TOTAL SHEETS	SHEET NO.
71	(3) I-4, L, RS-6	SANGAMON	26	15
CONTRACT NO. 72G91				
ILLINOIS FED. AID PROJECT				



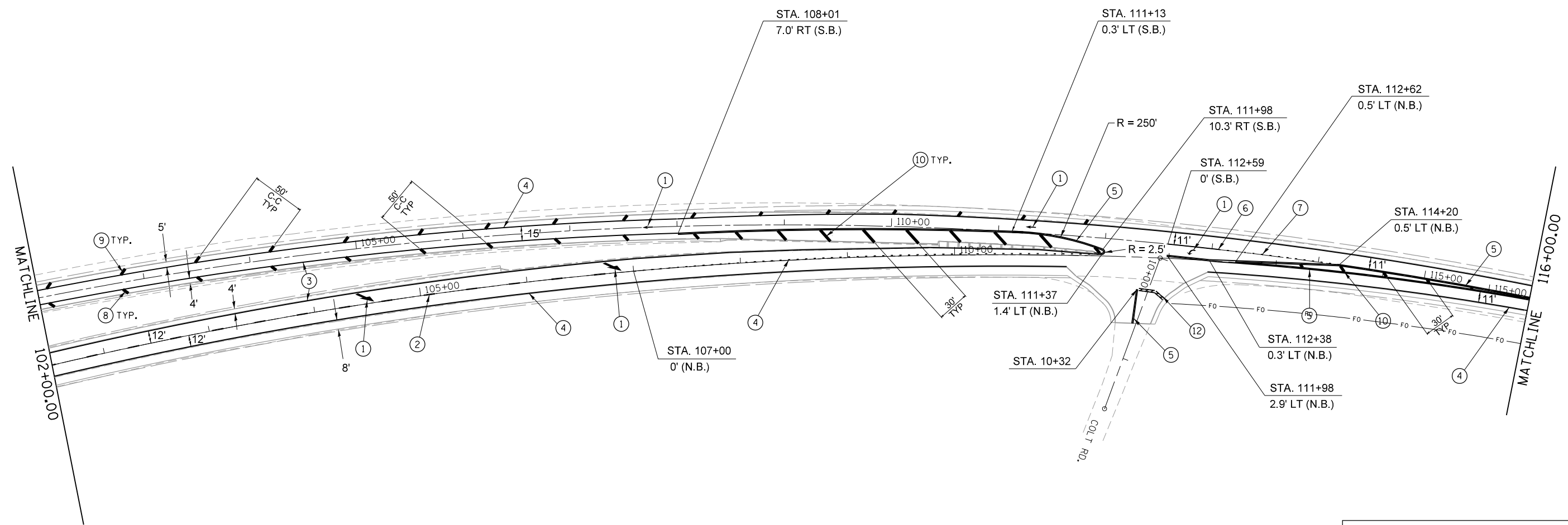
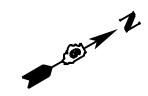
LEGEND	
①	PREFORMED PLASTIC PAVEMENT MARKING, TYPE B - INLAID - LETTER AND SYMBOLS
②	PREFORMED PLASTIC PAVEMENT MARKING, TYPE B - INLAID - LINE 5" (SKIP-DASH WHITE)
③	THERMOPLASTIC PAVEMENT MARKING - LINE 5" (SOLID YELLOW)
④	THERMOPLASTIC PAVEMENT MARKING - LINE 5" (SOLID WHITE)
⑤	THERMOPLASTIC PAVEMENT MARKING - LINE 5" (DOUBLE SOLID YELLOW)
⑥	THERMOPLASTIC PAVEMENT MARKING - LINE 6" (SOLID WHITE)
⑦	THERMOPLASTIC PAVEMENT MARKING - LINE 6" (MINI SKIP-DASH WHITE)
⑧	THERMOPLASTIC PAVEMENT MARKING - LINE 8" (SOLID YELLOW)
⑨	THERMOPLASTIC PAVEMENT MARKING - LINE 8" (SOLID WHITE)
⑩	THERMOPLASTIC PAVEMENT MARKING - LINE 12" (SOLID YELLOW)
⑪	THERMOPLASTIC PAVEMENT MARKING - LINE 12" (SOLID WHITE)
⑫	THERMOPLASTIC PAVEMENT MARKING - LINE 24" (SOLID WHITE)

FILE NAME =	USER NAME = sparksgw	DESIGNED -	REVISED -
ct:\pw\work\p\idot\sparksgw\10384019\0672091-SHT-PMK.DGN		DRAWN -	REVISED -
Default	PLOT SCALE = 100.0000' / 1".	CHECKED -	REVISED -
	PLOT DATE = Mar-20-2015 10:52:57AM	DATE -	REVISED -

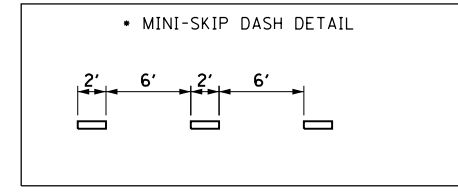
**STATE OF ILLINOIS
DEPARTMENT OF TRANSPORTATION**

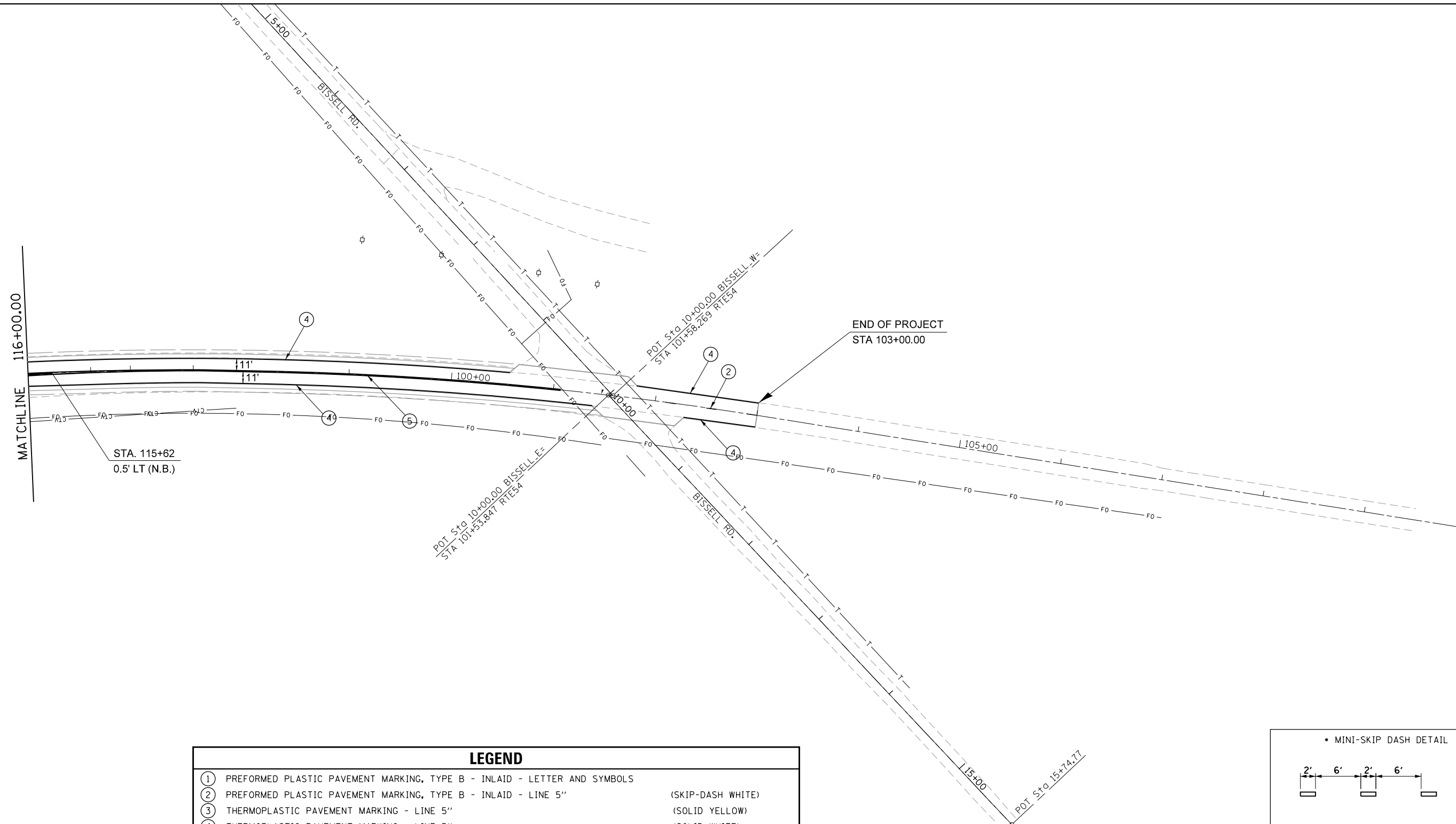
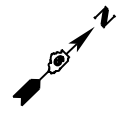
PAVEMENT MARKING SHEETS			
SCALE:	SHEET 1 OF 5 SHEETS	STA.	TO STA.

F.A.P. RTE.	SECTION	COUNTY	TOTAL SHEETS	SHEET NO.
71	(3) I-4, L, RS-6	SANGAMON	26	16
CONTRACT NO. 72G91				ILLINOIS FED. AID PROJECT

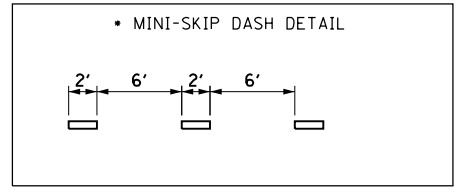


LEGEND	
①	PREFORMED PLASTIC PAVEMENT MARKING, TYPE B - INLAID - LETTER AND SYMBOLS (SKIP-DASH WHITE)
②	PREFORMED PLASTIC PAVEMENT MARKING, TYPE B - INLAID - LINE 5" (SOLID YELLOW)
③	THERMOPLASTIC PAVEMENT MARKING - LINE 5" (SOLID WHITE)
④	THERMOPLASTIC PAVEMENT MARKING - LINE 5" (DOUBLE SOLID YELLOW)
⑤	THERMOPLASTIC PAVEMENT MARKING - LINE 5" (SOLID WHITE)
⑥	THERMOPLASTIC PAVEMENT MARKING - LINE 6" (SOLID WHITE)
⑦	THERMOPLASTIC PAVEMENT MARKING - LINE 6" (MINI SKIP-DASH WHITE)
⑧	THERMOPLASTIC PAVEMENT MARKING - LINE 8" (SOLID YELLOW)
⑨	THERMOPLASTIC PAVEMENT MARKING - LINE 8" (SOLID WHITE)
⑩	THERMOPLASTIC PAVEMENT MARKING - LINE 12" (SOLID YELLOW)
⑪	THERMOPLASTIC PAVEMENT MARKING - LINE 12" (SOLID WHITE)
⑫	THERMOPLASTIC PAVEMENT MARKING - LINE 24" (SOLID WHITE)





LEGEND	
①	PREFORMED PLASTIC PAVEMENT MARKING, TYPE B - INLAID - LETTER AND SYMBOLS
②	PREFORMED PLASTIC PAVEMENT MARKING, TYPE B - INLAID - LINE 5" (SKIP-DASH WHITE)
③	THERMOPLASTIC PAVEMENT MARKING - LINE 5" (SOLID YELLOW)
④	THERMOPLASTIC PAVEMENT MARKING - LINE 5" (SOLID WHITE)
⑤	THERMOPLASTIC PAVEMENT MARKING - LINE 5" (DOUBLE SOLID YELLOW)
⑥	THERMOPLASTIC PAVEMENT MARKING - LINE 6" (SOLID WHITE)
⑦	THERMOPLASTIC PAVEMENT MARKING - LINE 6" (MINI SKIP-DASH WHITE)
⑧	THERMOPLASTIC PAVEMENT MARKING - LINE 8" (SOLID YELLOW)
⑨	THERMOPLASTIC PAVEMENT MARKING - LINE 8" (SOLID WHITE)
⑩	THERMOPLASTIC PAVEMENT MARKING - LINE 12" (SOLID YELLOW)
⑪	THERMOPLASTIC PAVEMENT MARKING - LINE 12" (SOLID WHITE)
⑫	THERMOPLASTIC PAVEMENT MARKING - LINE 24" (SOLID WHITE)



FILE NAME =	USER NAME = sparksgw	DESIGNED -	REVISED -
ct:\pw\work\p\dot\sparksgw\10384019\0672091-SHT-PMK.DGN		DRAWN -	REVISED -
Default	PLOT SCALE = 100.0000' / 1".	CHECKED -	REVISED -
	PLOT DATE = Mar-20-2015 10:53:00AM	DATE -	REVISED -

**STATE OF ILLINOIS
DEPARTMENT OF TRANSPORTATION**

PAVEMENT MARKING SHEETS

SCALE: SHEET 1 OF 5 SHEETS STA. TO STA.

F.A.P. RTE.	SECTION	COUNTY	TOTAL SHEETS	SHEET NO.
71	(3) I-4, L, RS-6	SANGAMON	26	19
CONTRACT NO. 72G91				
ILLINOIS FED. AID PROJECT				

GENERAL LIGHTING NOTES

- NO POLES TO BE INSTALLED IN THE FLOWLINE OF THE DITCH. POLE SETBACK TO BE ADJUSTED IF NECESSARY AS DIRECTED BY THE ENGINEER.
- UNIT DUCT SHALL BE SCHEDULE 40.

LIGHTING SCHEDULE OF QUANTITIES

SCHEDULE OF QUANTITIES			
PAY ITEM	DISCRIPTION	UNIT	QUANTITY
80400100	ELECTRIC SERVICE INSTALLATION	EACH	2
81028760	UNDERGROUND CONDUIT, COILABLE NONMETALLIC CONDUIT, 2 1/2" DIA.	FOOT	450
81603000	UNIT DUCT, 600V, 2-1C NO.8, 1/C NO.8 GROUND, (XLP-TYPE USE), 3/4" DIA POLYETHYLENE	FOOT	7,000
82500310	LIGHTING CONTROLLER, POLE MOUNTED, 240 VOLT, 60AMP	EACH	1
82500320	LIGHTING CONTROLLER, POLE MOUNTED, 480 VOLT, 60AMP	EACH	1
83600355	LIGHT POLE FOUNDATION, METAL, 15" BOLT CIRCLE, 8" X 6"	EACH	28
83002600	LIGHT POLE, ALUMINUM, 40FT. M.H., 15FT. DAVIT ARM	EACH	28
83800650	BREAKAWAY DEVICE, COUPLING WITH STAINLESS STEEL SCREEN	EACH	112
82102250	LUMINAIRE, SODIUM VAPOR, HORIZONTAL MOUNT, 250 WATT	EACH	28

MAKE SURE THE FOLLOWING CHECK BOXES ARE CHECKED:

ITEM# 25 NIGHT TIME INSPECTION OF ROADWAY LIGHTING
(RECURRING SPECIAL PROVISION LIST)

HIGHWAY STANDARDS

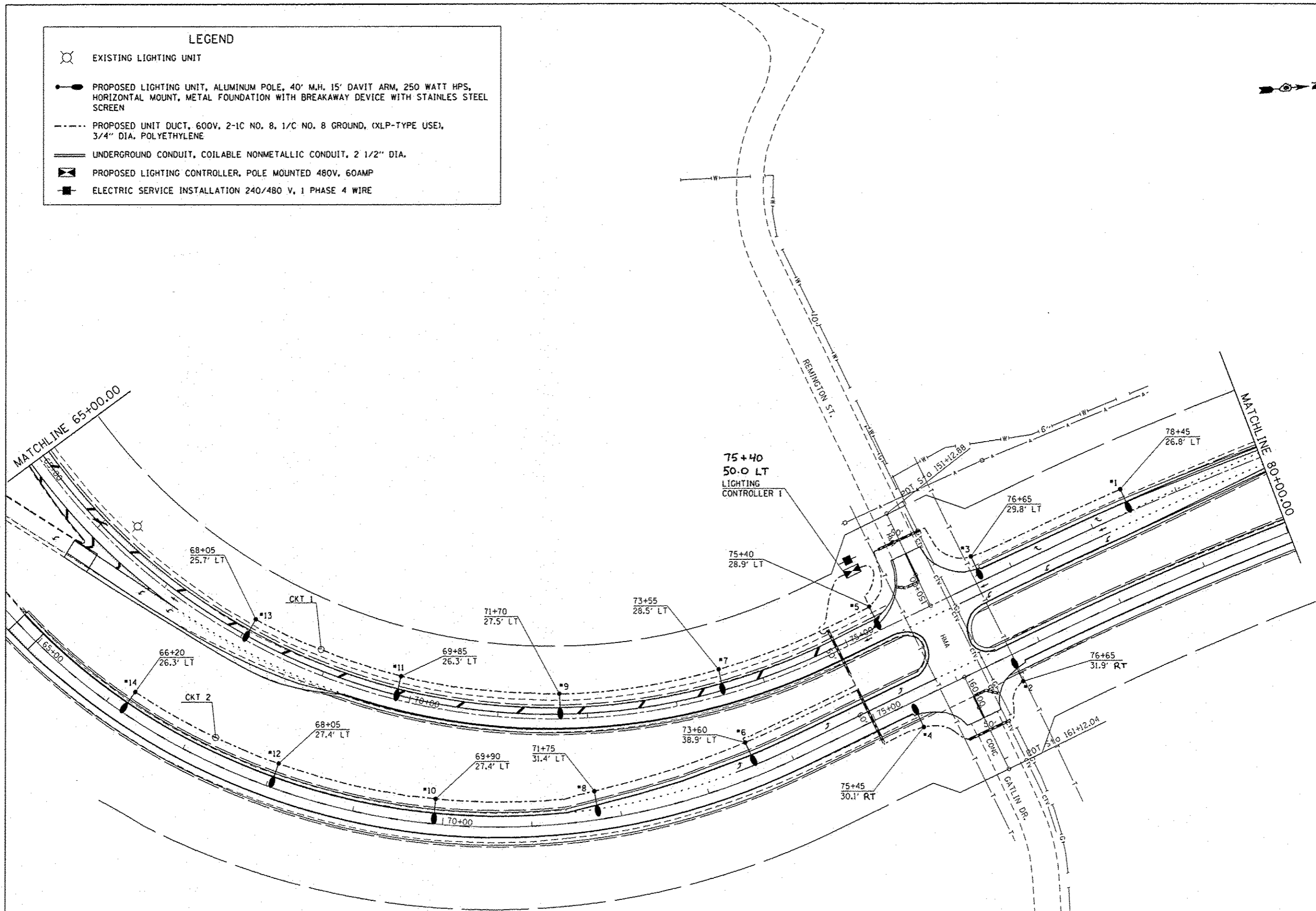
821101-01	LUMINAIRE WIRING DIAGRAM
825001-02	LIGHTING CONTROLLER POLE MOUNTED, 240V
825006-02	LIGHTING CONTROLLER POLE MOUNTED, 480V
830006-02	LIGHT POLE ALUMINUM DAVIT ARM
836001-02	LIGHT POLE FOUNDATION
838001	BREAKAWAY DEVICES
805001-01	ELECTRICAL SERVICE INSTALLATION DETAIL

INDEX OF SHEETS

20	GENERAL NOTES, SCHEDULE, AND INDEX OF SHEETS
21-23	PROPOSED LIGHTING PLANS
24	WIRING DIAGRAMS
25	LUMINAIRE PERFORMANCE TABLE

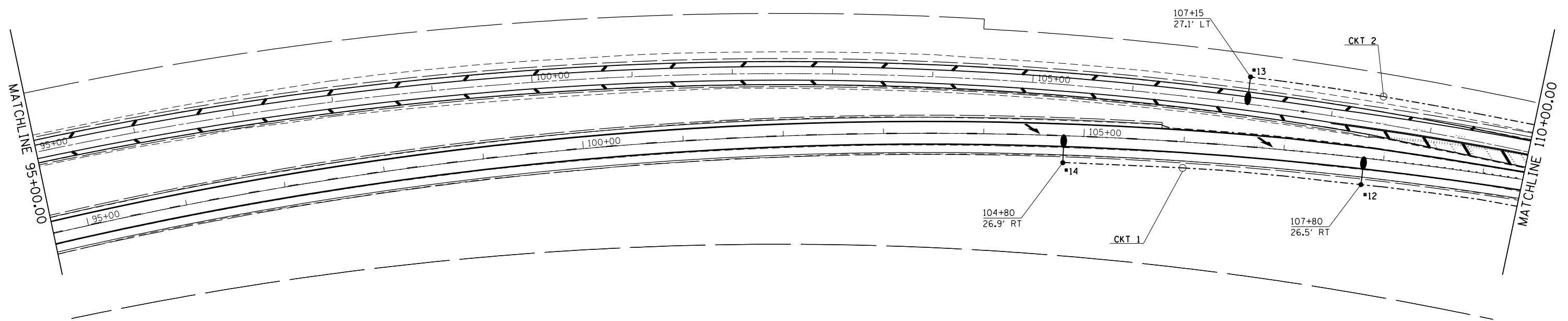
FILE NAME *	USER NAME * sparksg	DESIGNED -	REVISED -	STATE OF ILLINOIS DEPARTMENT OF TRANSPORTATION	GENERAL NOTES, SCHEDULE AND INDEX OF SHEETS	F.A.P. RTE.	SECTION	COUNTY	TOTAL SHEETS	SHEET NO.	
c:\pwwork\pvidot\sparksg\0304019\067	091-SHT-LIGHT.dgn	DRAWN -	REVISED -			71	(3) 1-4, L, RS-6	SANGAMON	26	20	
Default	PLOT SCALE = 100.0000' / 1"	CHECKED -	REVISED -			SCALE: SHEET 11 OF 16 SHEETS STA. TO STA.		ILLINOIS FED. AID PROJECT CONTRACT NO. 72091			
	PLOT DATE = Mar-29-2015 10:53:03AM	DATE -	REVISED -								

LEGEND	
	EXISTING LIGHTING UNIT
	PROPOSED LIGHTING UNIT, ALUMINUM POLE, 40' M.H. 15' DAVIT ARM, 250 WATT HPS, HORIZONTAL MOUNT, METAL FOUNDATION WITH BREAKAWAY DEVICE WITH STAINLESS STEEL SCREEN
	PROPOSED UNIT DUCT, 600V, 2-1C NO. 8, 1/C NO. 8 GROUND, (XLP-TYPE USE), 3/4" DIA. POLYETHYLENE
	UNDERGROUND CONDUIT, COILABLE NONMETALLIC CONDUIT, 2 1/2" DIA.
	PROPOSED LIGHTING CONTROLLER, POLE MOUNTED 480V, 60AMP
	ELECTRIC SERVICE INSTALLATION 240/480 V, 1 PHASE 4 WIRE



FILE NAME *	USER NAME *	DESIGNED -	REVISED -	STATE OF ILLINOIS DEPARTMENT OF TRANSPORTATION	PROPOSED LIGHTING PLANS		F.A.P. RTE.	SECTION	COUNTY	TOTAL SHEETS	SHEET NO.	
c:\pwwork\pwwork\sparkage\08384819\067	SPARKAGE	DRAWN -	REVISED -				71	(3) 1-4, L, RS-6	SANGAMON	26	21	
		CHECKED -	REVISED -				CONTRACT NO. 72G91					
Default		DATE -	REVISED -				ILLINOIS FED. AID PROJECT					
				SCALE:	SHEET L2 OF L6 SHEETS STA. TO STA.							

LEGEND	
	EXISTING LIGHTING UNIT
	PROPOSED LIGHTING UNIT, ALUMINUM POLE, 40' M.H. 15' DAVIT ARM, 250 WATT HPS, HORIZONTAL MOUNT, METAL FOUNDATION WITH BREAKAWAY DEVICE WITH STAINLES STEEL SCREEN
	PROPOSED UNIT DUCT, 600V, 2-1C NO. 8, 1/C NO. 8 GROUND, (XLP-TYPE USE), 3/4" DIA. POLYETHYLENE
	UNDERGROUND CONDUIT, COILABLE NONMETALLIC CONDUIT, 2 1/2" DIA.
	PROPOSED LIGHTING CONTROLLER, POLE MOUNTED 240V, 60AMP
	ELECTRIC SERVICE INSTALLATION 120/240 V, 1 PHASE 4 WIRE



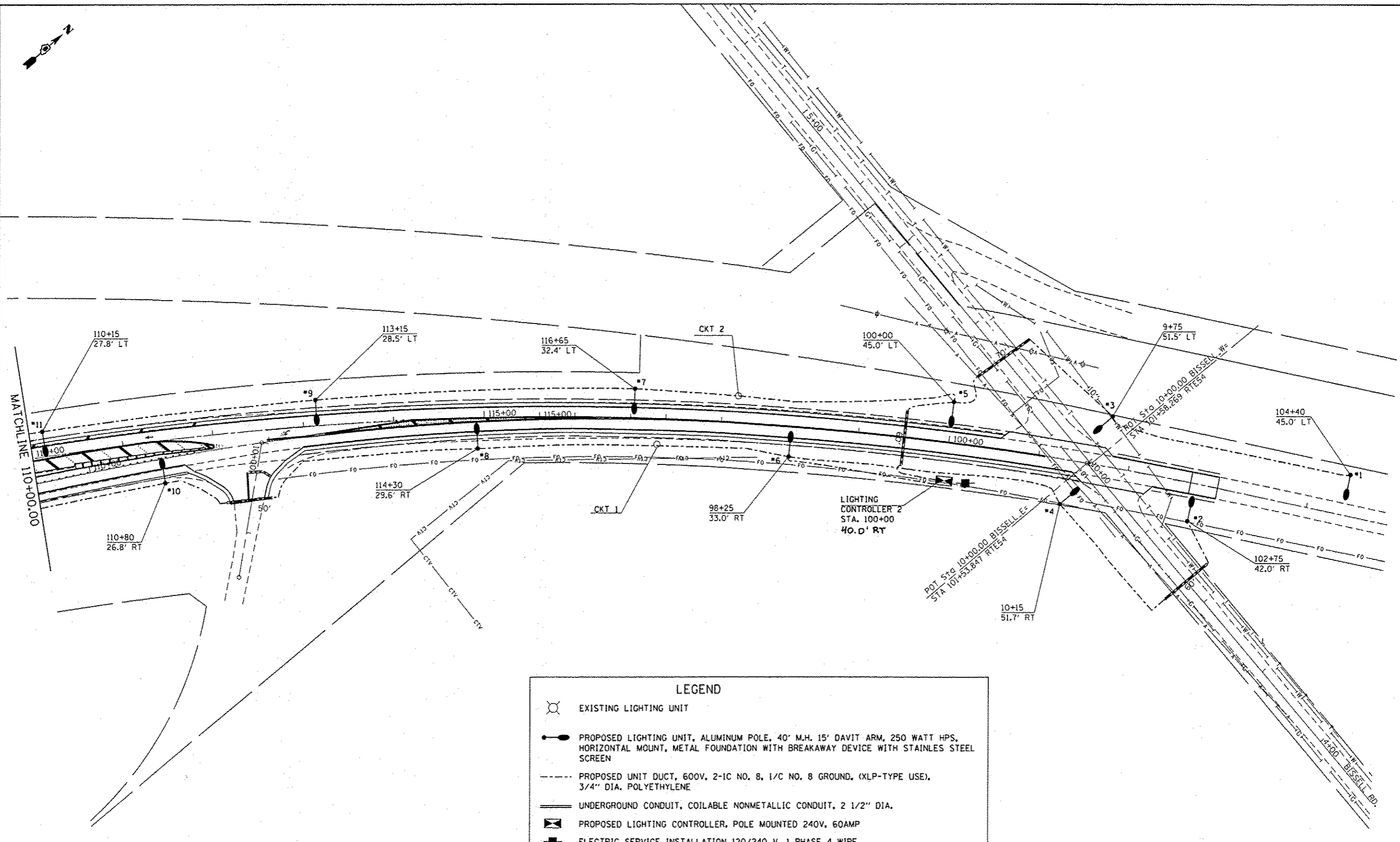
FILE NAME =	USER NAME = sparksgw	DESIGNED -	REVISED -
c:\pwwork\pwwork\sparksgw\10384019\0672091-SHT-LIGHT.dgn		DRAWN -	REVISED -
Default	PLOT SCALE = 100.0000' / in.	CHECKED -	REVISED -
	PLOT DATE = Mar-20-2015 10:53:06AM	DATE -	REVISED -

**STATE OF ILLINOIS
DEPARTMENT OF TRANSPORTATION**

PROPOSED LIGHTING PLANS

SCALE: SHEET L3 OF L6 SHEETS STA. TO STA.

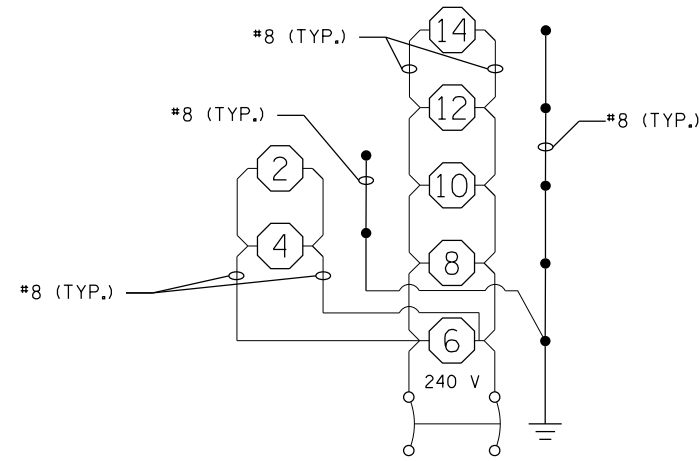
F.A.P. RTE.	SECTION	COUNTY	TOTAL SHEETS	SHEET NO.
71	(3) I-4, L, RS-6	SANGAMON	26	22
CONTRACT NO. 72G91				
ILLINOIS FED. AID PROJECT				



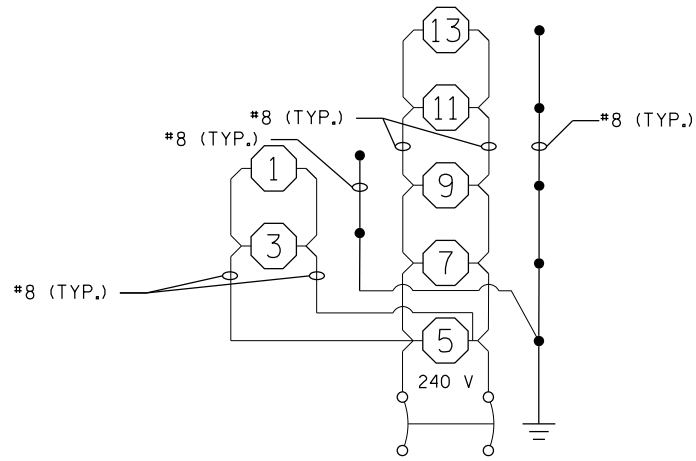
LEGEND

- EXISTING LIGHTING UNIT
- PROPOSED LIGHTING UNIT, ALUMINUM POLE, 40' M.H. 15' DAVIT ARM, 250 WATT HPS, HORIZONTAL MOUNT, METAL FOUNDATION WITH BREAKAWAY DEVICE WITH STAINLESS STEEL SCREEN
- PROPOSED UNIT DUCT, 600V, 2-1C NO. 8, 1/C NO. 8 GROUND, (XLP-TYPE USE), 3/4" DIA. POLYETHYLENE
- UNDERGROUND CONDUIT, COILABLE NONMETALLIC CONDUIT, 2 1/2" DIA.
- PROPOSED LIGHTING CONTROLLER, POLE MOUNTED 240V, 60AMP
- ELECTRIC SERVICE INSTALLATION 120/240 V, 1 PHASE 4 WIRE

FILE NAME : c:\pwwork\pwwork\spksg\10030401\9\067\091-SH1-LIGHT.dgn	USER NAME : spksg	DESIGNED : -	REVISED : -	STATE OF ILLINOIS DEPARTMENT OF TRANSPORTATION	PROPOSED LIGHTING PLANS	F.A.P. RTE. 71	SECTION (3) I-4, L, RS-6	COUNTY SANGAMON	TOTAL SHEETS 26	SHEET NO. 23	
PLOT SCALE : 100,0000' / in.						CONTRACT NO. 72G91					
PLOT DATE : Mar-20-2015 10:52:07AM						ILLINOIS FED. AID PROJECT					
DATE : -						SCALE: SHEET L4 OF L6 SHEETS STA. TO STA.					



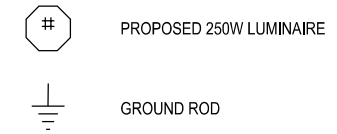
2 POLE 20 AMP BREAKER
CKT #1



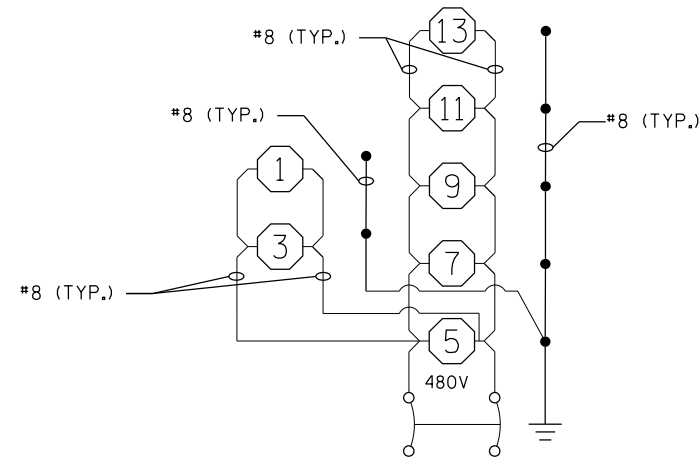
2 POLE 20 AMP BREAKER
CKT #2

NOTE:

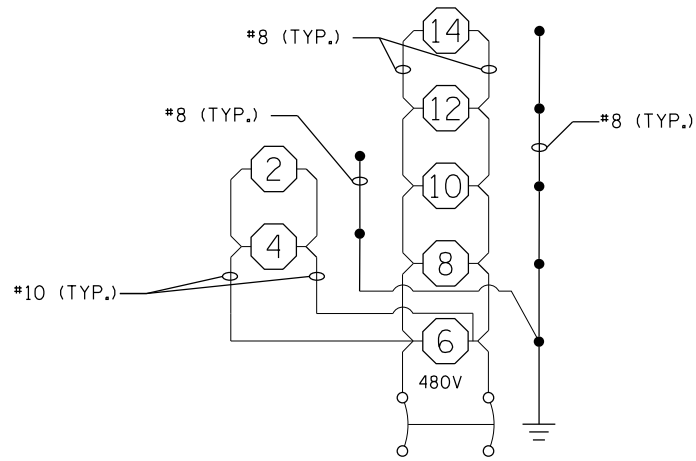
1. ALL NECESSARY REVISIONS TO THE WIRING SHOWN ON THIS SHEET SHALL BE MADE AT NO ADDITIONAL COST TO THE DEPARTMENT AND TO THE SATISFACTION OF THE ENGINEER.



LIGHTING CONTROLLER 2
POLE MOUNT. 240 V



2 POLE 20 AMP BREAKER
CKT #1



2 POLE 20 AMP BREAKER
CKT #2

LIGHTING CONTROLLER 1
POLE MOUNT. 480V

FILE NAME =	USER NAME = sparksgw	DESIGNED -	REVISED -
ct:\pw\work\pwidot\sparksgw\10384019\0672091-SHT-LIGHT.dgn		DRAWN -	REVISED -
Default	PLOT SCALE = 100.0000' / in.	CHECKED -	REVISED -
	PLOT DATE = Mar-20-2015 10:53:08AM	DATE -	REVISED -

STATE OF ILLINOIS
DEPARTMENT OF TRANSPORTATION

WIRING DIAGRAMS

SCALE: SHEET L5 OF L6 SHEETS STA. TO STA.

F.A.P. RTE.	SECTION	COUNTY	TOTAL SHEETS	SHEET NO.
71	(3) I-4, L, RS-6	SANGAMON	26	24
CONTRACT NO. 72G91			ILLINOIS FED. AID PROJECT	

ILLINOIS DEPARTMENT OF TRANSPORTATION
250W LUMINAIRE PERFORMANCE TABLE

GIVEN CONDITIONS

ROADWAY DATA:	Pavement Width	24	FT
	Number Of Lanes (In Direction of Travel)	2	
	Median Width	N/A	
	IES Surface Classification	R3	
	Q-Zero Value	.07	
LIGHT POLE DATA:	Mounting Height	40	FT
	Mast Arm Length	15	
	Pole Set-Back From Edge Of Pavement	15	FT
LUMINAIRE DATA:	Lamp Type	HPS	
	Lamp Lumens	28,500	
	IES Vertical Distribution	Medium	
	IES Control Of Distribution	Full Cutoff	
	IES Lateral Distribution	Type III	
	Total Light Loss Factor	0.684	
LAYOUT DATA:	Spacing	350	FT
	Configuration	Staggered	
	Luminaire Overhang Over Edge Of Pavement Lane	0	FT

NOTE: Variations from the above specified IES distribution pattern may be requested and acceptance of variations will be subject to review by the Engineer based on how well the performance requirements are met.

PERFORMANCE REQUIREMENTS

NOTE: These performance requirements shall be the minimum acceptable standards of photometric performance for the luminaire, based on the given conditions listed above.

ILLUMINATION:	Average Horizontal Illumination, (E_{Ave})	9.0	Lux
	Uniformity Ratio, (E_{Ave}/E_{Min})	3.0:1	
LUMINANCE:	Average Luminance: (L_{Ave})	0.6	Cd/m ²
	Uniformity Ratios: (L_{Ave}/L_{Min})	3.5:1	
	(L_{Max}/L_{Min})	6.0:1	
	Maximum Veiling Luminance Ratio: (L_v/L_{Ave})	0.3:1	

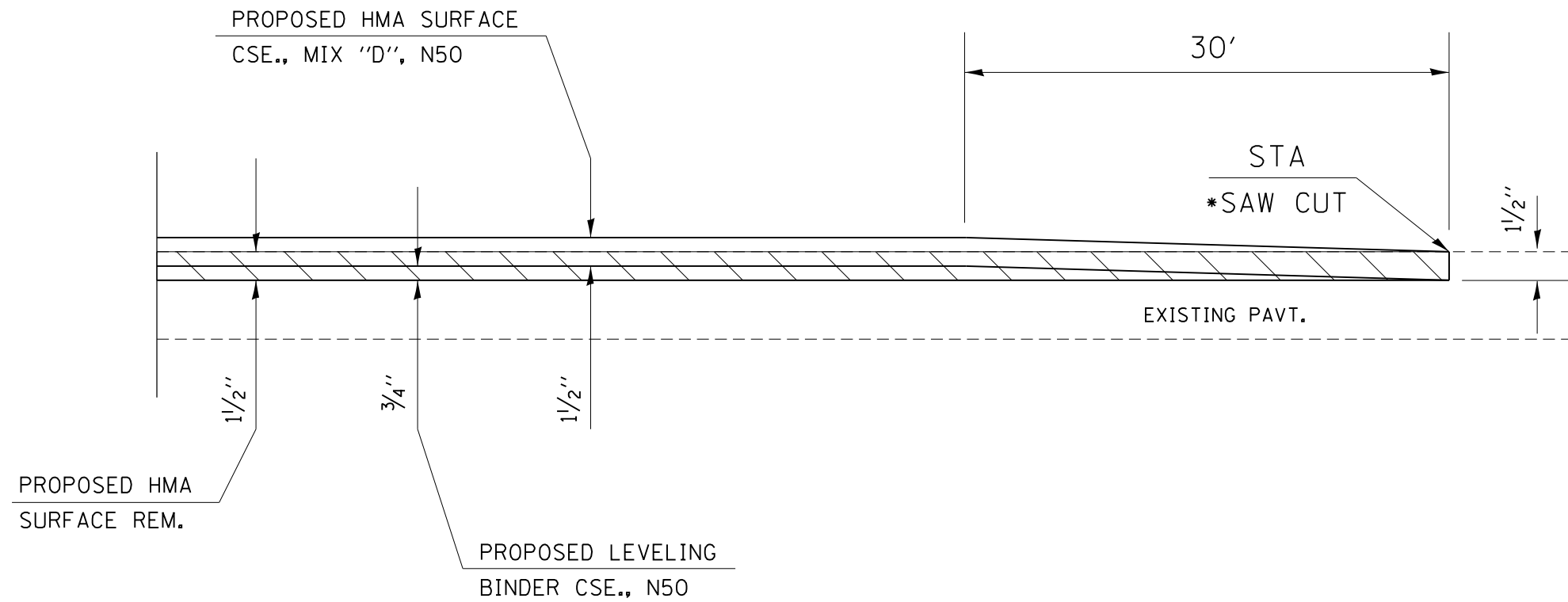
FILE NAME =	USER NAME = sparksgw	DESIGNED -	REVISED -
c:\pwork\pwork\sparksgw\10384019\0672091-SHT-LIGHT.dgn		DRAWN -	REVISED -
Default	PLOT SCALE = 100.0000' / in.	CHECKED -	REVISED -
	PLOT DATE = Mar-20-2015 10:53:09AM	DATE -	REVISED -

STATE OF ILLINOIS
DEPARTMENT OF TRANSPORTATION

LUMINAIRE PERFORMANCE TABLE

SCALE: SHEET L6 OF L6 SHEETS STA. TO STA.

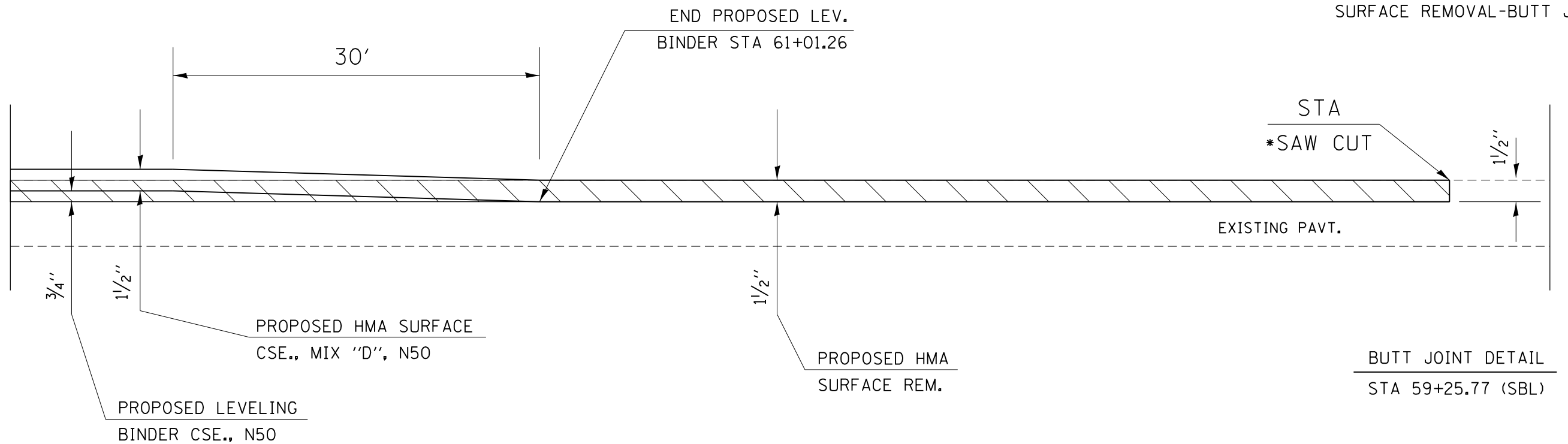
F.A.P. RTE.	SECTION	COUNTY	TOTAL SHEETS	SHEET NO.
71	(3) I-4, L, RS-6	SANGAMON	26	25
CONTRACT NO. 72G91			ILLINOIS FED. AID PROJECT	



*SAW CUT INCIDENTAL TO HMA SURFACE REMOVAL-BUTT JOINT

BUTT JOINT DETAIL

STA
65+94.96 (SBL)
64+67.36 (NBL)
103+00.00



*SAW CUT INCIDENTAL TO HMA SURFACE REMOVAL-BUTT JOINT

BUTT JOINT DETAIL

STA 59+25.77 (SBL)

FILE NAME =	USER NAME = sparksgw	DESIGNED -	REVISED -
ct:\pw\work\p\dot\sparksgw\10384019\0672091-sht-details.dgn		DRAWN -	REVISED -
	PLOT SCALE = 40.0000 ' / in.	CHECKED -	REVISED -
	PLOT DATE = Mar-20-2015 10:53:30AM	DATE -	REVISED -

STATE OF ILLINOIS
DEPARTMENT OF TRANSPORTATION

BUTT JOINT
DETAIL

SCALE: NTS SHEET 1 OF 1 SHEETS STA. TO STA.

F.A.P. RTE.	SECTION	COUNTY	TOTAL SHEETS	SHEET NO.
71	(3) I-4, L, RS-6	SANGAMON	26	26
CONTRACT NO. 72G91			ILLINOIS FED. AID PROJECT	