

**INDEX OF SHEETS**

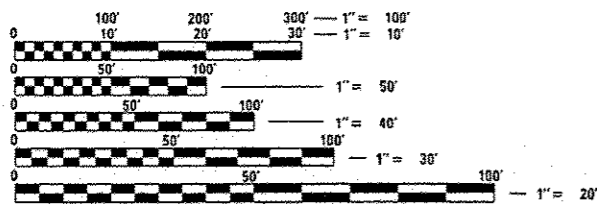
- 1 COVER SHEET
- 2 GENERAL NOTES, MIX TABLES
- 3,4 SUMMARY OF QUANTITIES
- 5 SCHEDULE OF QUANTITIES
- 6-13 TYPICAL CROSS SECTIONS
- 14-17 LINE DIAGRAM PLAN SHEETS
- 18 SOUTH NINTH STREET DETAILS
- 19 NORTH NINTH STREET DETAILS
- 20-29 STATE JURISDICTION LAYOUT

**HIGHWAY STANDARDS**

001001-02	701602-07
001006	701701-09
442201-03	701901-04
701601-09	886001-01

**ROADWAY FUNCTIONAL CLASS**  
OTHER PRINCIPAL ARTERIAL

**AVERAGE DAILY TRAFFIC**  
SEE SHEET 5



FULL SIZE PLANS HAVE BEEN PREPARED USING STANDARD ENGINEERING SCALES. REDUCED SIZED PLANS WILL NOT CONFORM TO STANDARD SCALES. IN MAKING MEASUREMENTS ON REDUCED PLANS, THE ABOVE SCALES MAY BE USED.

J.U.L.I.E.  
JOINT UTILITY LOCATION INFORMATION FOR EXCAVATION  
1-800-892-0123  
OR 811

PROJECT ENGINEER: VINCE MADONIA - (217) 785-9046  
TEAM MANAGER: TIM SLAGLE - (217) 785-5538

CONTRACT NO. 72H08

STATE OF ILLINOIS

DEPARTMENT OF TRANSPORTATION

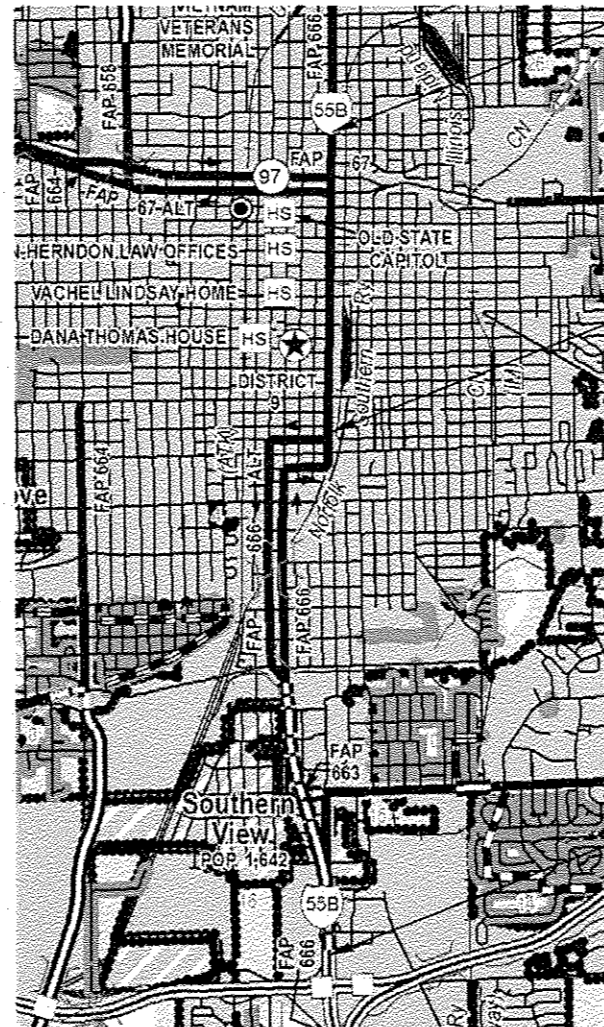
DIVISION OF HIGHWAYS

**PLANS FOR PROPOSED  
CONTRACT MAINTENANCE**

FAP ROUTE 666 (BUS. LOOP 55 (5TH, 6TH, & 9TH STREETS))  
SECTION (110X)I-2, (SP-Z)I-1

**MAINLINE PAVEMENT PATCHING  
SANGAMON COUNTY**

C-96-079-14



LOCATION MAP

PROJECT SECTION BEGINS, ENDS  
(9TH STREET, JUST SOUTH  
OF CARPENTER STREET TO JUST  
SOUTH OF REYNOLDS STREET)

PROJECT SECTION ENDS  
(5TH & 6TH STREETS)

PROJECT SECTION BEGINNING  
(5TH & 6TH STREETS)

F.A.P. RTE.	SECTION	COUNTY	TOTAL SHEETS	SHEET NO.
666	(110X)I-2, (SP-Z)I-1	SANGAMON	29	1
ILLINOIS			CONTRACT NO. 72H08	

D-96-079-14



STATE OF ILLINOIS  
DEPARTMENT OF TRANSPORTATION  
DIVISION OF HIGHWAYS

SUBMITTED *October 30, 2014*  
*Ryan J. Drubell*  
DEPUTY DIRECTOR OF HIGHWAYS, REGION ENGINEER

*Jan 30, 2015*  
*John D. Baranzoli, P.E.*  
ENGINEER OF DESIGN AND ENVIRONMENT

*Jan 30, 2015*  
*Omer Osman, P.E.*  
DIRECTOR OF HIGHWAYS, CHIEF ENGINEER

**PRINTED BY THE AUTHORITY  
OF THE STATE OF ILLINOIS**

## GENERAL NOTES:

1. ANY REFERENCE TO A STANDARD IN THESE PLANS SHALL BE INTERPRETED TO MEAN THE EDITION AS INDICATED BY THE SUB NUMBER LISTED IN THE INDEX OF SHEETS OR THE COPY OF THE STANDARD INCLUDED IN THESE PLANS.
2. IN ADDITION TO FIELD SURVEYS, PLAN DIMENSIONS AND DETAILS RELATIVE TO THE EXISTING FACILITIES HAVE BEEN TAKEN FROM EXISTING PLANS AND ARE SUBJECT TO CONSTRUCTION VARIATIONS. IT SHALL BE THE CONTRACTOR'S RESPONSIBILITY TO VERIFY SUCH DIMENSIONS AND DETAILS IN THE FIELD. SUCH VARIATIONS SHALL NOT BE A CAUSE FOR ADDITIONAL COMPENSATION DUE TO A CHANGE IN THE SCOPE OF WORK; HOWEVER, THE CONTRACTOR WILL BE PAID FOR THE QUANTITY ACTUALLY FURNISHED AT THE UNIT PRICE BID FOR THE WORK.
3. THE CONTRACTOR SHALL BE RESPONSIBLE FOR PROTECTING UTILITY PROPERTY FROM CONSTRUCTION OPERATIONS, AS OUTLINED IN ARTICLE 107.31 OF THE STANDARD SPECIFICATIONS. THE J.U.L.I.E. NUMBER IS 1-800-892-0123. A MINIMUM OF 48 HOURS ADVANCE NOTICE IS REQUIRED.
4. ACCESS MUST BE MAINTAINED TO ALL EXISTING PROPERTIES DURING CONSTRUCTION PER ARTICLE 107.09 UNLESS ARRANGEMENTS ARE MADE IN WRITING BY THE CONTRACTOR WITH THE PROPERTY OWNERS WITH A COPY TO THE ENGINEER FOR SHORT-TERM CLOSURES.
5. THE THICKNESS OF PROPOSED PAVEMENT PATCHING CALLED OUT IN THE PLANS IS THE NOMINAL THICKNESS. DEVIATIONS FROM THE NOMINAL THICKNESS WILL BE PERMITTED WHEN SUCH DEVIATIONS OCCUR DUE TO IRREGULARITIES IN THE EXISTING SURFACE AND BASE COURSES ON WHICH THE PATCHING MIXTURE IS PLACED. ANY DEVIATIONS IN COSTS FOR PAVEMENT PATCHING SHALL ADHERE TO THE GUIDELINES SET FORTH IN SECTION 442 OF THE STANDARD SPECIFICATIONS FOR ROAD & BRIDGE CONSTRUCTION.
6. ALL SAW CUTS, NECESSARY TO COMPLETE THE WORK DETAILED IN THESE PLANS, SHALL BE INCLUDED IN THE COST FOR THE VARIOUS PAY ITEMS INVOLVED.
7. AS CONSTRUCTION ACTIVITIES FOR MAINLINE PARTIAL DEPTH PATCHING ARE BEING PREFORMED, THE ENGINEER SHALL IDENTIFY ANY PAVEMENT CRACKS AND HOLES HE OR SHE DEEMS NECESSARY TO FILL. THE FILLING OF CRACKS AND HOLES SHALL BE PAID FOR BY THE PAY ITEM "MIXTURE FOR CRACKS, JOINTS, AND FLANGWAYS". THE MIXTURE USED FOR FILLING THESE CRACKS AND HOLES SHALL BE THE SAME MIXTURE USED FOR PARTIAL DEPTH PATCHING.

8. THE WORK PROPOSED IN THIS PROJECT IS LIMITED TO THE TRAFFIC LANES ALONG FIFTH AND SIXTH STREETS THAT FALL WITHIN THE STATE'S JURISDICTION. STATE JURISDICTION LIMITS AS STATED IN RECENT AGREEMENTS WITH THE CITY OF SPRINGFIELD ARE AS FOLLOWS:

**STATE MAINTANANCE FOR FIFTH STREET:**

- SPRUCE ST. TO ASH ST. - 3 THRU TRAFFIC LANES, 2 EAST OF CENTER LINE & 1 WEST OF CENTER LINE (CITY/STATE AGREEMENT, 1988)
- LAUREL ST. TO JUST NORTH OF STANFORD AVE. - 3 CENTER THRU TRAFFIC LANES (CITY/STATE AGREEMENT, 1988)
- SPRUCE ST. TO LAUREL ST. - 3 THRU TRAFFIC LANES, 2 EAST OF CENTER LINE & 1 WEST OF CENTER LINE (CITY/STATE AGREEMENT, 2001)
- LAUREL ST. TO JUST SOUTH OF BRYN MAWR - 3 CENTER THRU TRAFFIC LANES (CITY/STATE AGREEMENT, 2001)

**STATE MAINTANANCE FOR SIXTH STREET:**

- MYRTLE ST. TO STANFORD AVE. - 3 CENTER THRU TRAFFIC LANES (CITY/STATE AGREEMENT, 2001)
- STANFORD AVE. TO HAZEL DEL RD. - ALL THRU TRAFFIC LANES, NORTHBOUND & SOUTHBOUND

9. HIGHWAY TRAFFIC CONTROL AND PROTECTION STANDARD 701601 SHALL BE UTILIZED FOR THE 5TH AND 6TH STREETS PROJECT SECTIONS. HIGHWAY TRAFFIC CONTROL AND PROTECTION STANDARD 701602 SHALL BE UTILIZED FOR THE PROJECT SECTION ALONG 9TH STREET, JUST SOUTH OF CARPENTER STREET TO JUST SOUTH OF REYNOLDS STREET.

10. UNLESS DIRECTED BY THE ENGINEER, PAVEMENT MARKING LINES SHALL NOT BE LAID DIRECTLY OVER A LONGITUDINAL CRACK OR JOINT NOR OVER A TAR OR ASPHALT PAINTED LINE. THE EDGE OF A CENTERLINE OR LANE LINE SHALL BE OFFSET A MINIMUM DISTANCE OF 2" FROM A LONGITUDINAL CRACK OR JOINT. EDGE LINES SHALL BE APPROXIMATELY 2" FROM THE EDGE LINE OF PAVEMENT. SEE SECTION 780 OF THE STANDARD SPECIFICATIONS FOR TRAFFIC CONTROL ITEMS.

11. THE FOLLOWING RATES OF APPLICATION HAVE BEEN USED TO CALCULATE THE PLAN QUANTITIES:
 

BITUMINOUS MATERIALS (PRIME COAT)	0.00038 TON/SQ. YD. (ON PAVEMENT)
BITUMINOUS MATERIALS (PRIME COAT)	0.001425 TON/SQ. YD. (ON AGG.)
AGGREGATE PRIME COAT	0.002 TON/SQ. YD.
BITUMINOUS CONCRETE SURFACE / BINDER	0.056 TON/SQ. YD. PER 1"
AGGREGATE MATERIAL	2.05 TON/CU. YD.

## COMMITMENTS:

1. THE FIELD/RESIDENT ENGINEER SHALL CONTACT STUDIES AND PLANS COVERING ANY MAJOR PLAN CHANGES TO MAKE SURE NO PREVIOUS COMMITMENTS (NOT LISTED) WERE MADE AFFECTING THE DESIGN, AND TO ALLOW IMPROVED DESIGN FOR THE FUTURE.

## MIXTURE TABLES

BUSS LOOP 55 PATCHING	
MIXTURE USE(S):	FULL DEPTH PAVEMENT PATCHING
PG:	PG 64-22
DESIGN AIR VOIDS:	4.0% @N70
MIXTURE COMPOSITION: (GRADATION MIXTURE)	IL 19.0
FRICITION AGGREGATE:	N/A
QUALITY MANAGEMENT:	QC/OA

BUSS LOOP 55 PATCHING	
MIXTURE USE(S):	LONGITUDINAL JOINT REPAIR
PG:	PG 64-22
DESIGN AIR VOIDS:	4.0% @N70
MIXTURE COMPOSITION: (GRADATION MIXTURE)	IL 9.5
FRICITION AGGREGATE:	MIX "C"
QUALITY MANAGEMENT:	QC/OA

NOTE: A DEPTH OF 2" AND A WIDTH OF 2'-0" IS USED FOR LONGITUDINAL PARTIAL DEPTH PATCHING.

DISTRICT SIX	
EXAMINED	OCTOBER 30 <sup>th</sup> 20 14
<i>John C. W...</i>	
OPERATIONS ENGINEER	
EXAMINED	October 30 20 14
<i>Ron Archambeau</i>	
PROJECT IMPLEMENTATION ENGINEER	
EXAMINED	October 30 20 14
<i>Jeff P. My...</i>	
PROGRAM DEVELOPMENT ENGINEER	

# SUMMARY OF QUANTITIES

CODE NO.	ITEM	UNIT	TOTAL QUANTITY	CONSTR. CODE
				100% STATE
				ROADWAY
				0005
	URBAN			
40600400	MIXTURE FOR CRACKS, JOINTS, AND FLANGEWAYS	TON	67	67
44200156	PAVEMENT PATCHING, TYPE II, 13 INCH	50 YD	451	451
44200160	PAVEMENT PATCHING, TYPE III, 13 INCH	50 YD	84	84
44200162	PAVEMENT PATCHING, TYPE IV, 13 INCH	50 YD	1400	1400
56500600	DOMESTIC WATER SERVICE BOXES TO BE ADJUSTED	EACH	3	3
60255500	MANHOLES TO BE ADJUSTED	EACH	1	1
67100100	MOBILIZATION	L SUM	1	1
70102630	TRAFFIC CONTROL AND PROTECTION, STANDARD 701601	L SUM	1	1
70102632	TRAFFIC CONTROL AND PROTECTION, STANDARD 701602	L SUM	1	1
70102635	TRAFFIC CONTROL AND PROTECTION, STANDARD 701701	L SUM	1	1
* 78001120	PAINT PAVEMENT MARKING - LINE 5"	FOOT	2500	2500
* 88600100	DETECTOR LOOP, TYPE I	FOOT	585	585
X4405020	LONGITUDINAL PARTIAL DEPTH REMOVAL 2"	FOOT	6170	6170
X4406240	PARTIAL DEPTH REMOVAL, TYPE II, 4"	50 YD	912	912

13

\* SPECIALTY ITEM

FILE NAME :	USER NAME : sparksg	DESIGNED - RTS	REVISED -	STATE OF ILLINOIS DEPARTMENT OF TRANSPORTATION	SUMMARY OF QUANTITIES	F.A.P. RTE.	SECTION	COUNTY	TOTAL SHEETS	SHEET NO.	
		CHECKED -	REVISED -			666	(110X) 1-2, (SP-211)-1	SANGAMON	29	3	
		DATE - 10-22-2014	REVISED -			SCALE: SHEET 1 OF 2 SHEETS STA. TO STA.		CONTRACT NO. T2H08			
						ILLINOIS FED. AID PROJECT					

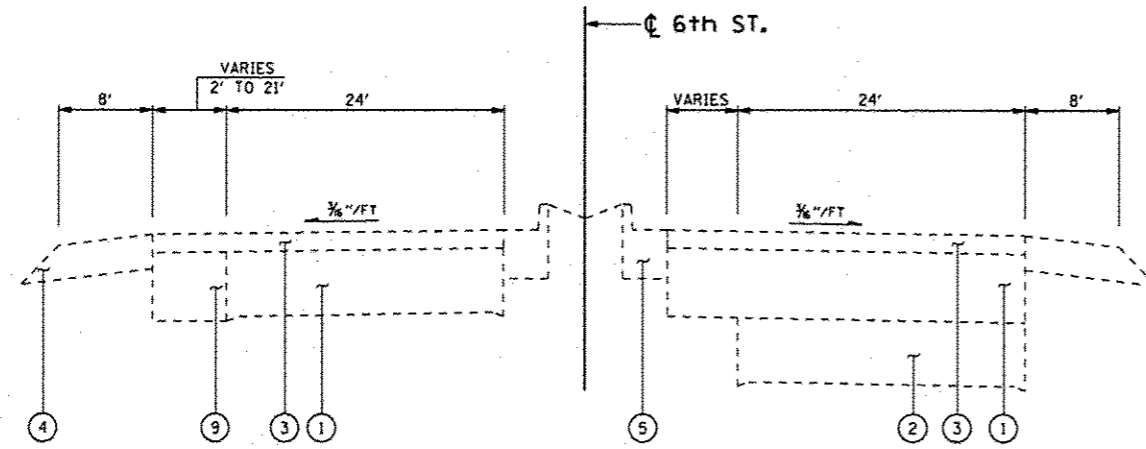
#05 22 130  
#05 22 130

### SUMMARY OF QUANTITIES

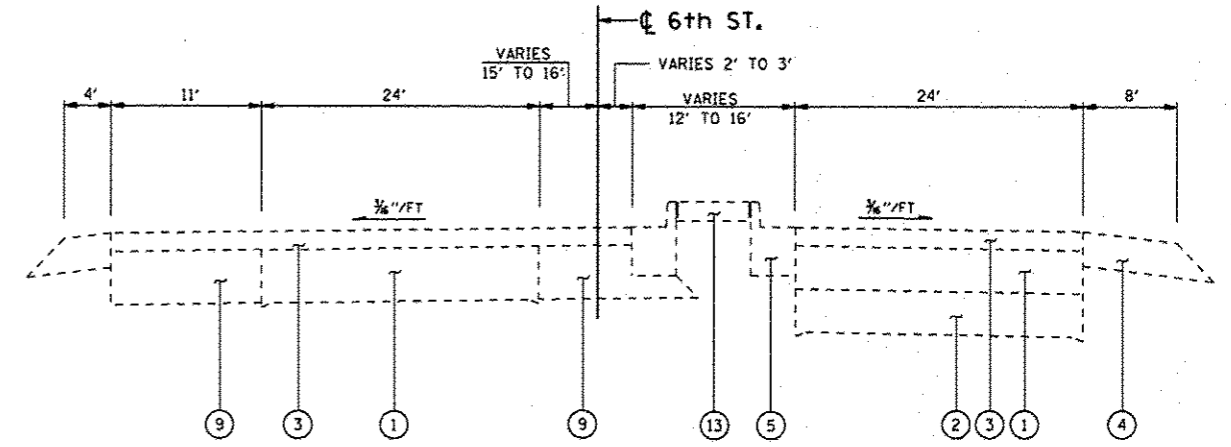
CODE NO.	ITEM	UNIT	TOTAL QUANTITY	URBAN
				CONSTR. CODE
				ROADWAY 0005
X4406440	PARTIAL DEPTH REMOVAL, TYPE III, 4"	SQ YD	402	402
X4406640	PARTIAL DEPTH REMOVAL, TYPE IV, 4"	SQ YD	584	584
X4420900	LONGITUDINAL PARTIAL DEPTH PATCHING	TON	154	154
X4421000	PARTIAL DEPTH PATCHING	TON	425	425

X

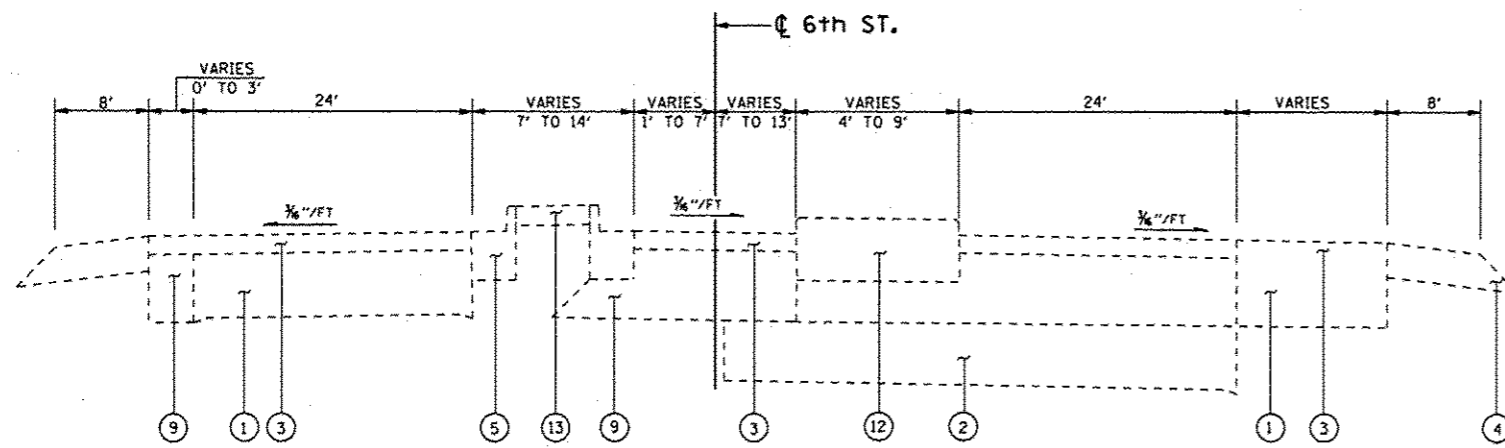




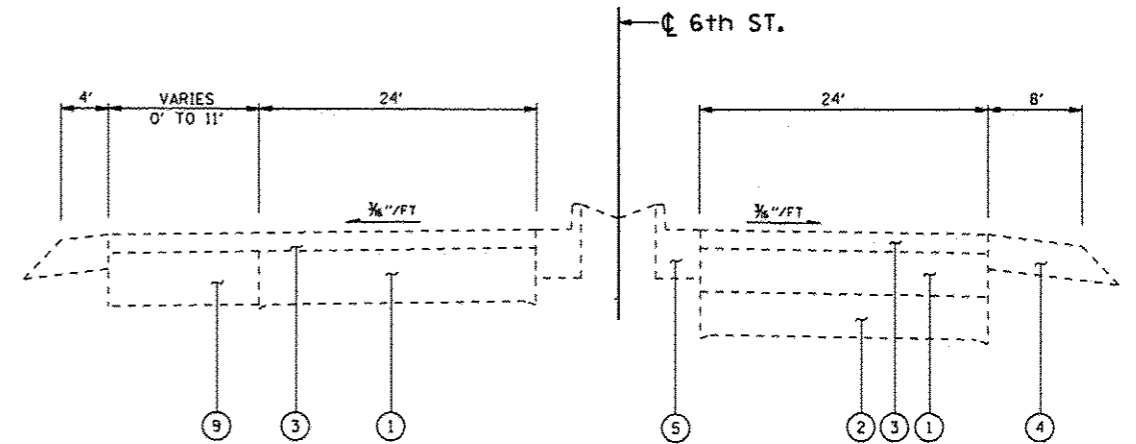
**TYPICAL SECTION**  
**STA. 9+81.52 TO STA. 13+45 LT**  
**STA. 9+81.52 TO STA. 13+95 RT**



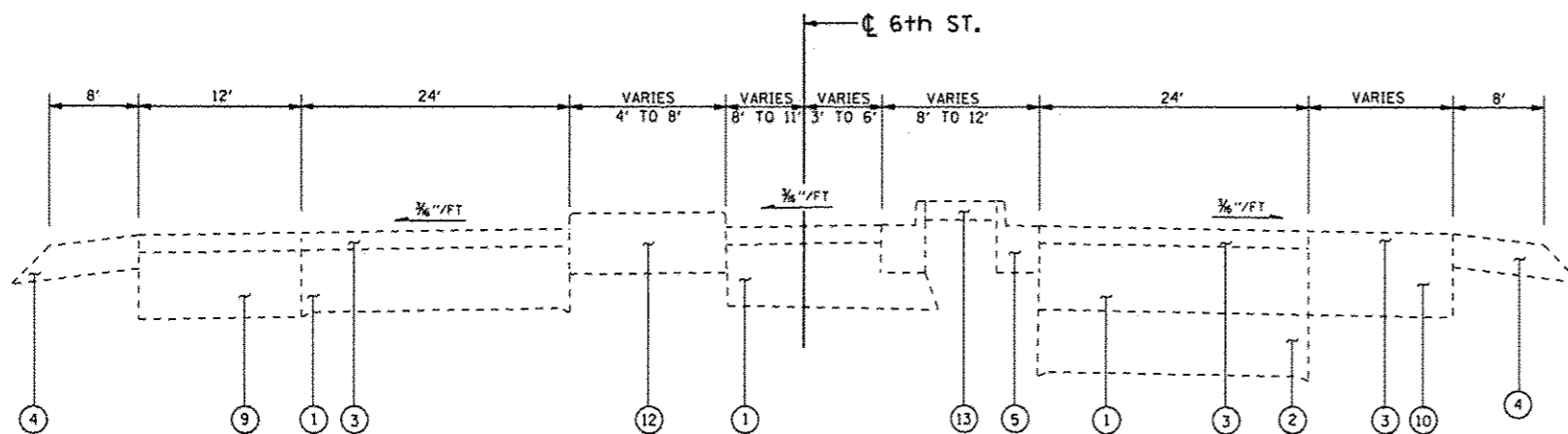
**TYPICAL SECTION**  
**STA. 17+07 TO STA. 18+31**



**TYPICAL SECTION**  
**STA. 13+45 TO STA. 14+90 LT**  
**STA. 13+95 TO STA. 14+90 RT**



**TYPICAL SECTION**  
**STA. 18+31 TO STA. 20+88**



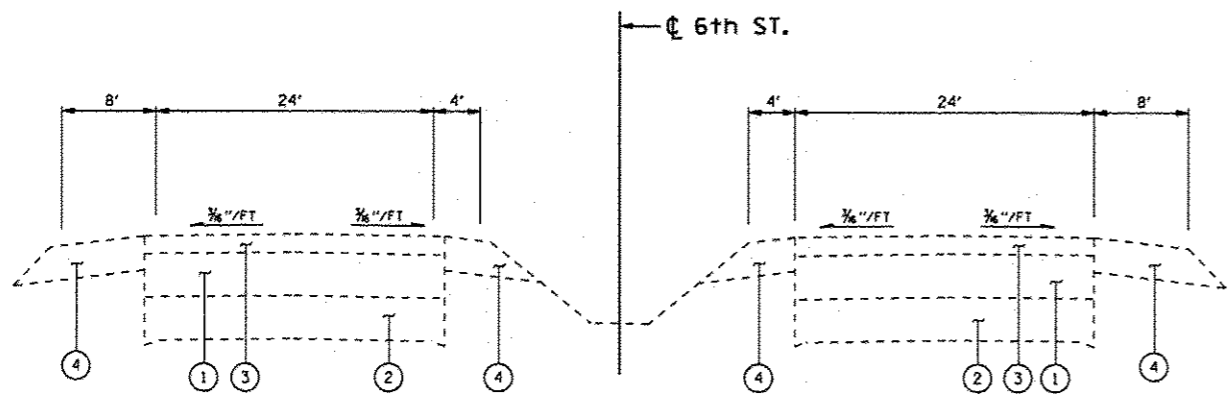
**TYPICAL SECTION**  
**STA. 16+17 TO STA. 17+07**

**LEGEND**

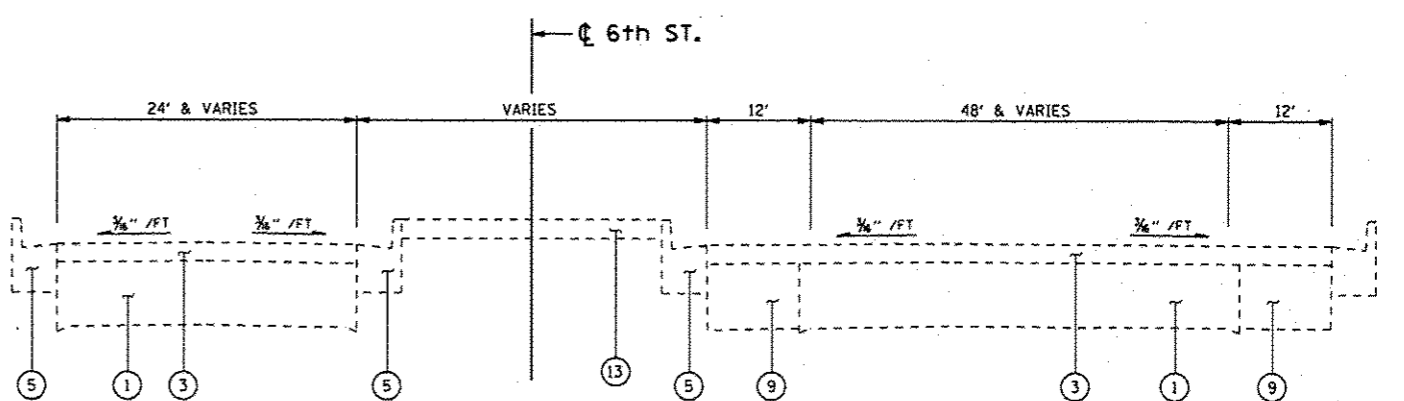
- ① EX PCC PAVEMENT, 10"
- ② EX ORIGINAL PCC PAVEMENT, 9"-7"-9"
- ③ EX BINDER & SURFACE COURSES
- ④ EX BITUMINOUS SHOULDER
- ⑤ EX COMBINATION CURB & GUTTER M-6.24
- ⑥ EX COMBINATION CURB & GUTTER M-6.06
- ⑦ EX COMBINATION CURB & GUTTER SPECIAL
- ⑧ EX COMBINATION CURB & GUTTER
- ⑨ EX BITUMINOUS CONCRETE BASE COURSE WIDENING
- ⑩ EX BITUMINOUS BASE COURSE
- ⑪ EX BITUMINOUS CONCRETE BASE COURSE
- ⑫ EX CORRUGATED MEDIAN
- ⑬ EX CONCRETE MEDIAN SURFACE

FOR INFORMATIONAL  
 PURPOSES ONLY

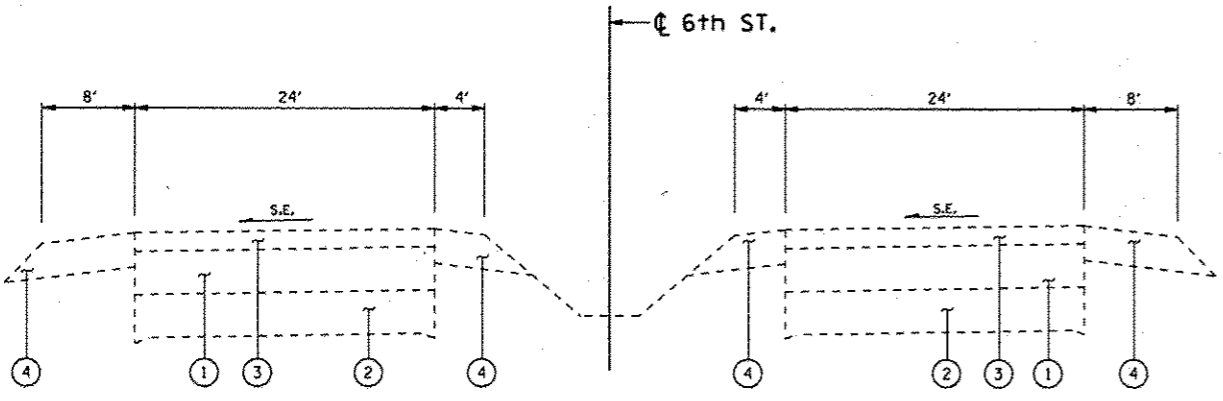
FILE NAME :	USER NAME : sparkage	DESIGNED : MOK	REVISED : -	<b>STATE OF ILLINOIS DEPARTMENT OF TRANSPORTATION</b>	<b>TYPICAL CROSS SECTIONS SIXTH STREET</b>		F.A.P. RTE. : 666	SECTION : (110X)I-2, (SP-Z)I-1	COUNTY : SANGAMON	TOTAL SHEETS : 29	SHEET NO. : 6	
p:\11084EBIDINTEG\Illinois.gov\PI001\Documents\DOT Offices\District 6\Projects\067\067\067\CAD\0672H08-sh1-typl01.dwg	PLLOT SCALE : 200.0000' / in.	CHECKED : RTS	REVISED : -		SCALE :	SHEET 1 OF 8 SHEETS	STA. TO STA.	ILLINOIS FED. AID PROJECT				
Default	PLLOT DATE : 10/30/2014	DATE : 10-22-2014	REVISED : -						CONTRACT NO. 72H08			



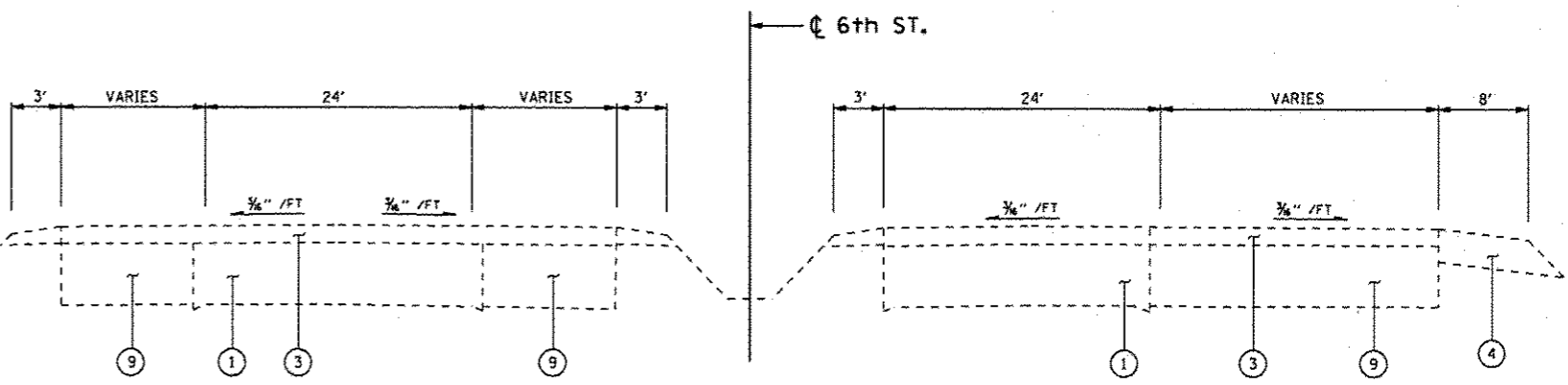
**TYPICAL SECTION**  
**STA. 20+88 TO STA. 22+76.62**  
**STA. 38+56.48 TO STA. 43+52**



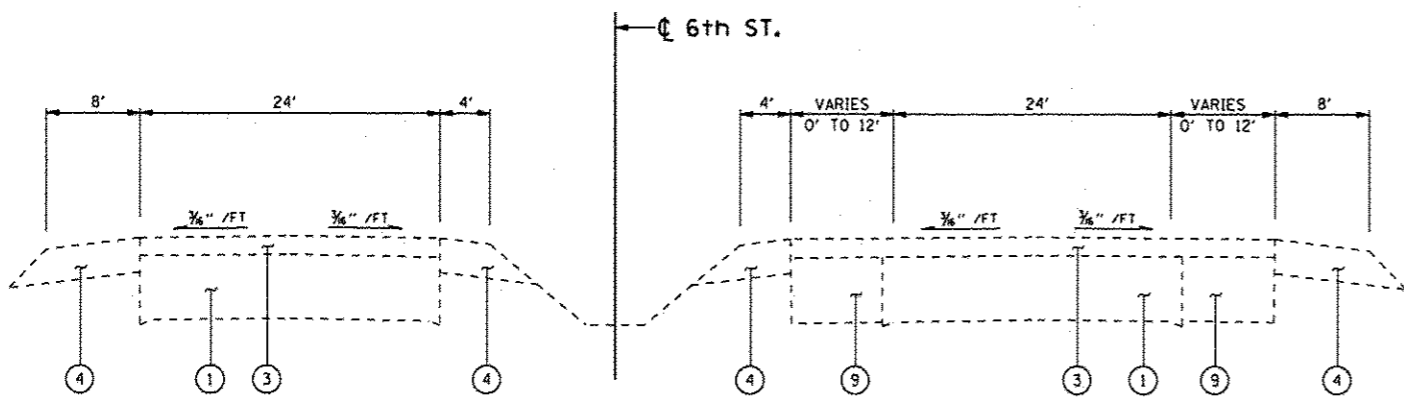
**TYPICAL SECTION**  
**STA. 47+40 TO STA. 48+27**



**TYPICAL SECTION**  
**STA. 22+76.62 TO STA. 38+56.48**



**TYPICAL SECTION**  
**STA. 49+09 TO STA. 53+11**



**TYPICAL SECTION**  
**STA. 43+52 TO STA. 47+40**

**LEGEND**

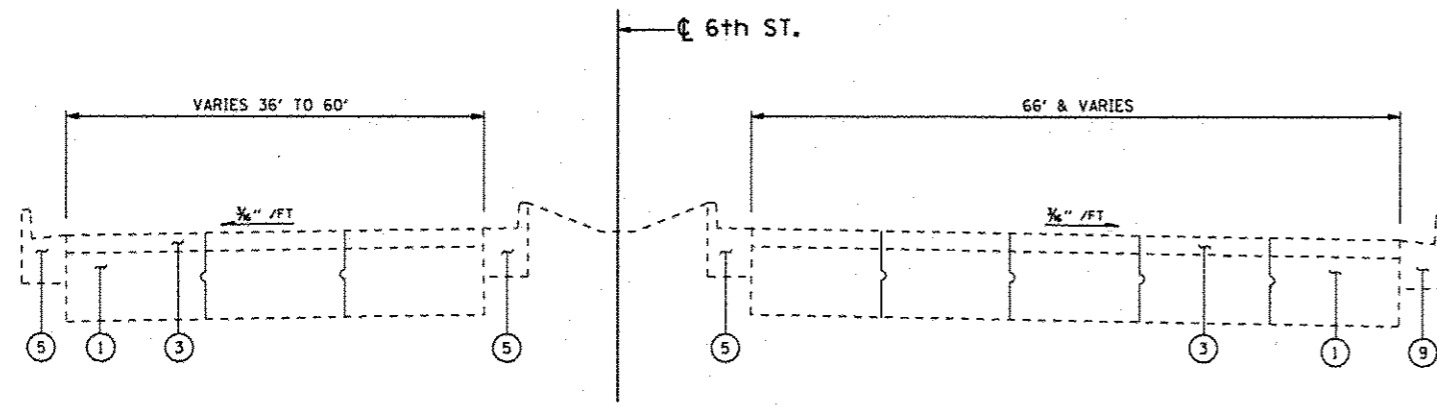
- ① EX PCC PAVEMENT
- ② EX ORIGINAL PCC PAVEMENT, 9"-7"-9"
- ③ EX BINDER & SURFACE COURSES
- ④ EX BITUMINOUS SHOULDER
- ⑤ EX COMBINATION CURB & GUTTER M-6.24
- ⑥ EX COMBINATION CURB & GUTTER M-6.06
- ⑦ EX COMBINATION CURB & GUTTER SPECIAL
- ⑧ EX COMBINATION CURB & GUTTER
- ⑨ EX BITUMINOUS CONCRETE BASE COURSE WIDENING
- ⑩ EX BITUMINOUS BASE COURSE
- ⑪ EX BITUMINOUS CONCRETE BASE COURSE
- ⑫ EX CORRUGATED MEDIAN
- ⑬ EX CONCRETE MEDIAN SURFACE

FOR INFORMATIONAL  
 PURPOSES ONLY

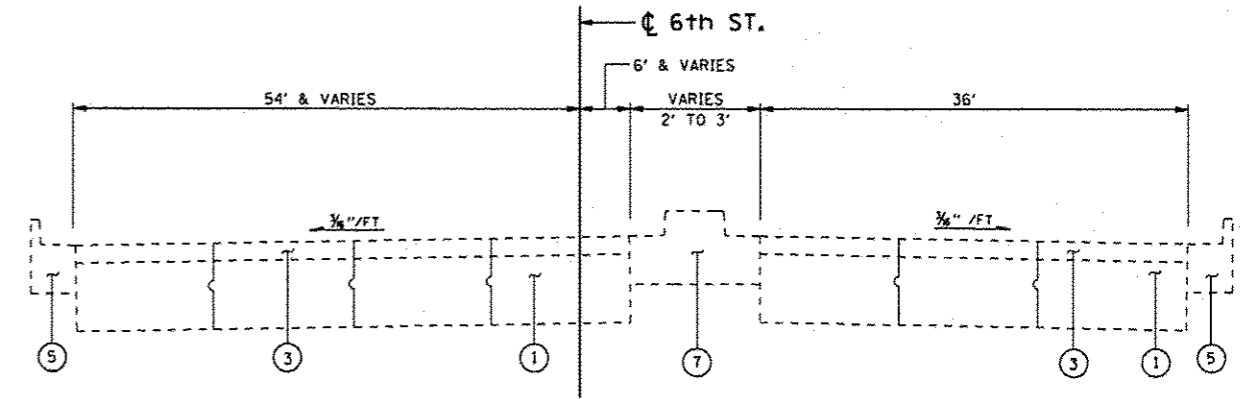




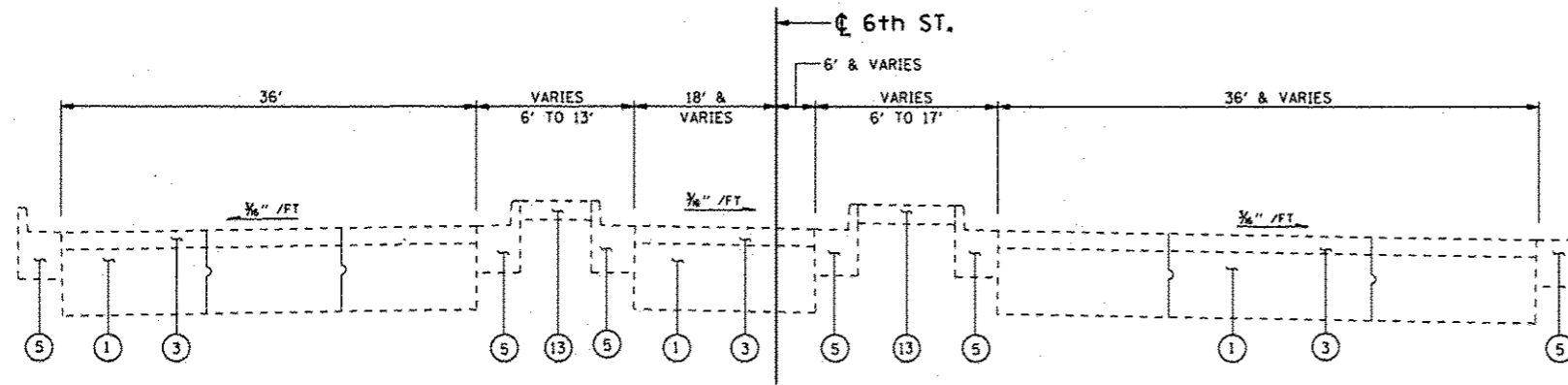




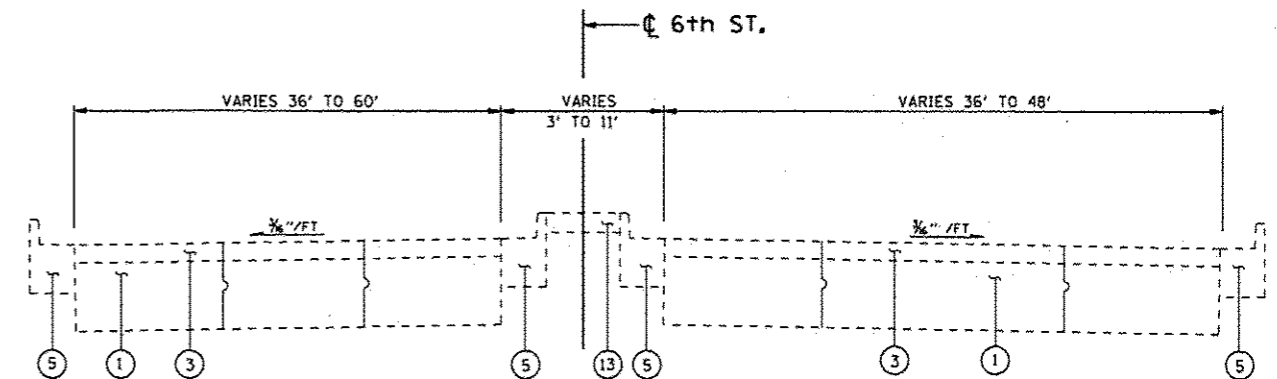
**TYPICAL SECTION**  
STA. 75+73 TO STA. 77+12



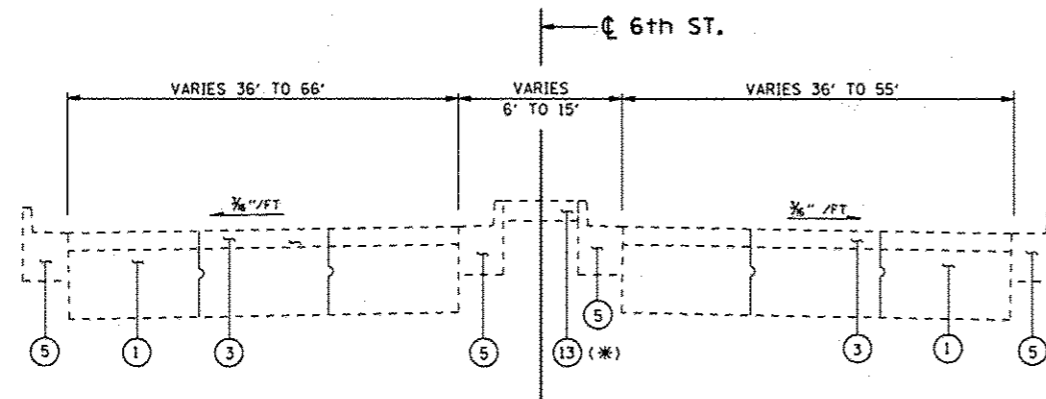
**TYPICAL SECTION**  
STA. 82+17 TO STA. 83+26



**TYPICAL SECTION**  
STA. 78+43 TO STA. 79+25



**TYPICAL SECTION**  
STA. 83+26 TO STA. 85+59



**TYPICAL SECTION**  
STA. 79+25 TO STA. 81+16

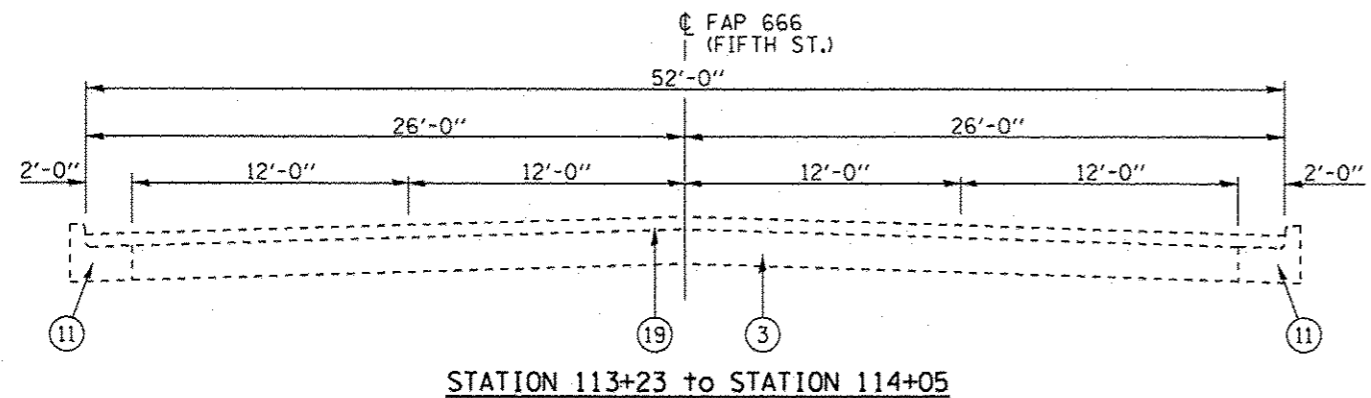
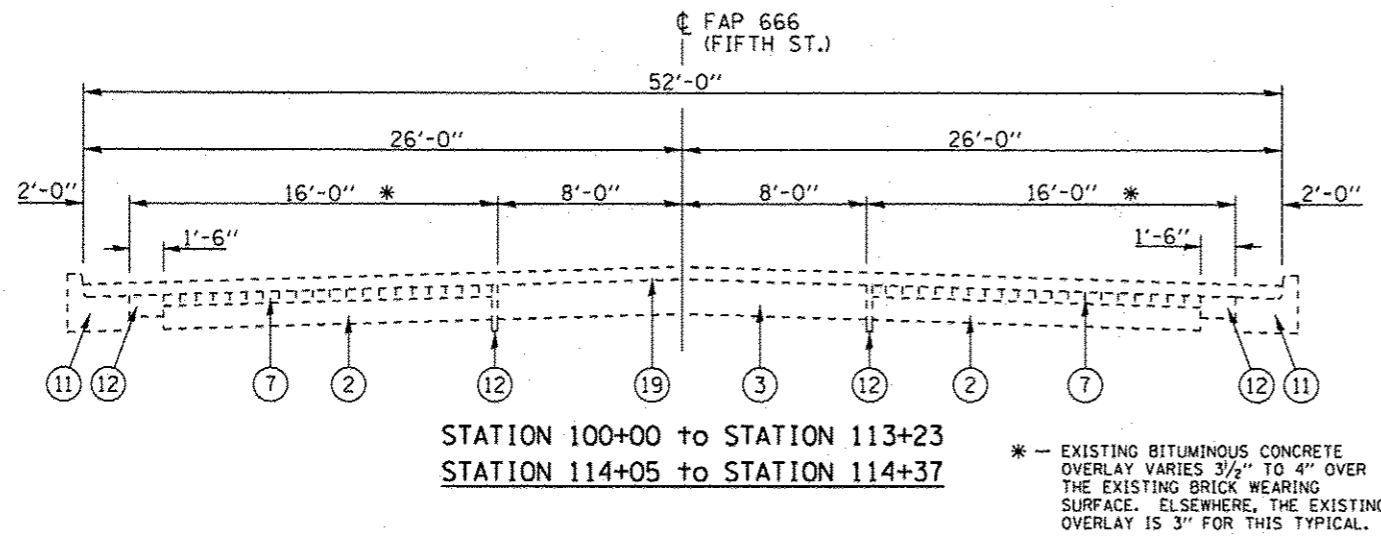
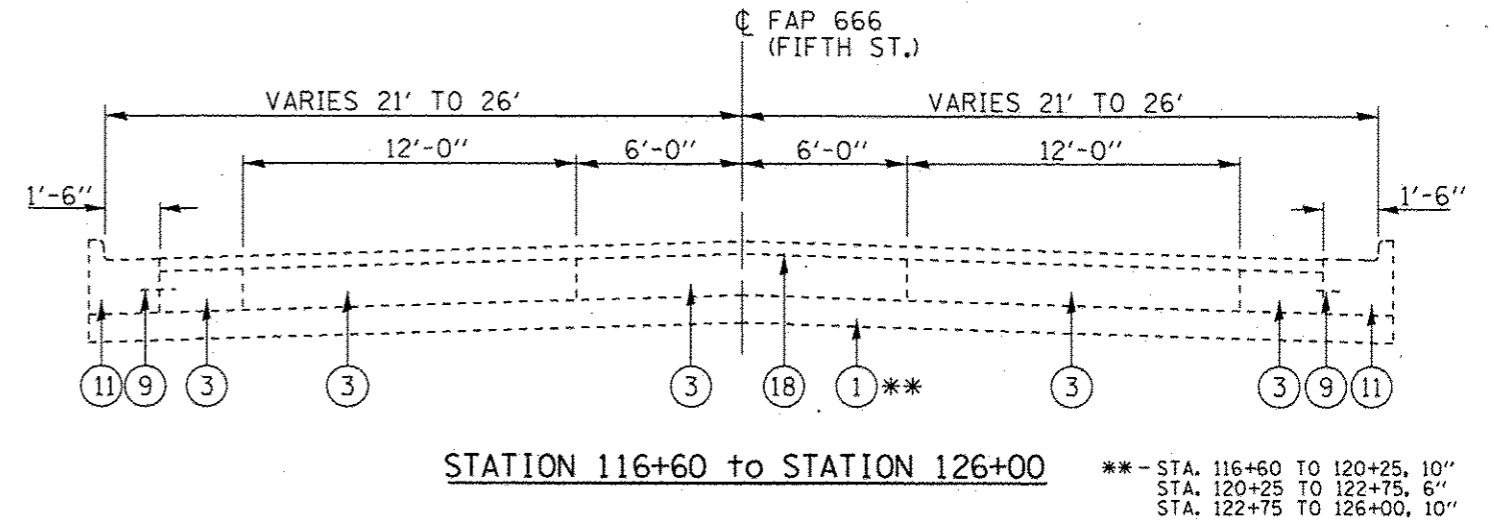
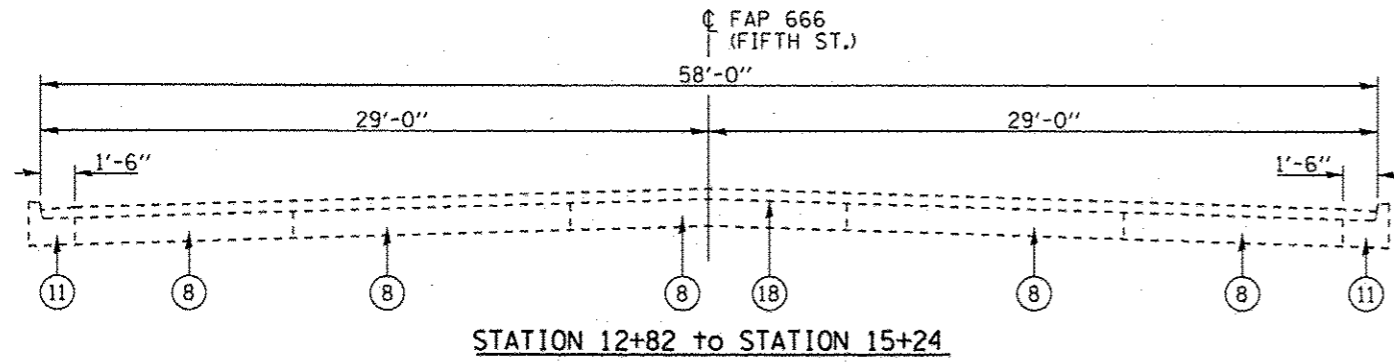
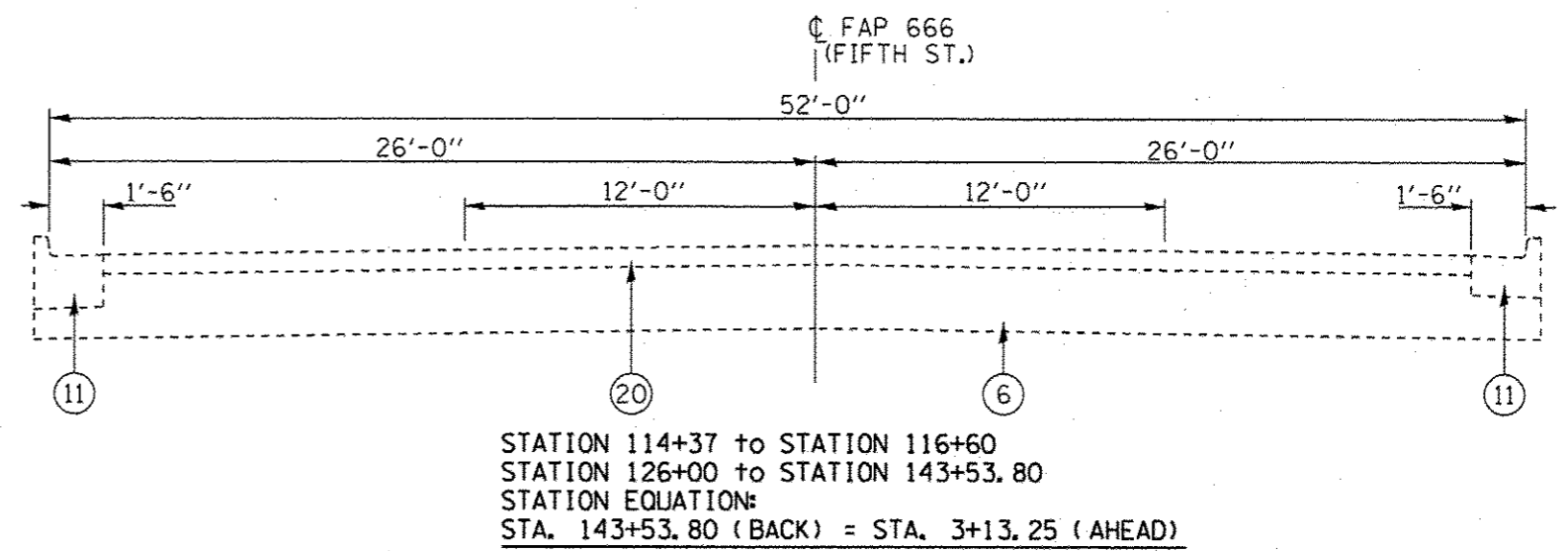
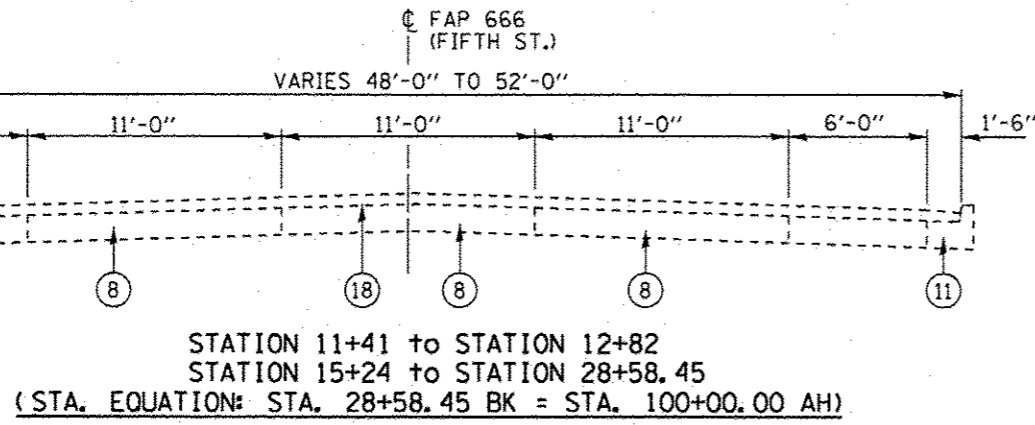
**NOTE:**  
(\* ) CENTER OF RAISED MEDIAN  
VARIES FROM 10' LT TO 14' RT  
OF 6 SIXTH ST.

**LEGEND**

- ① EX PCC PAVEMENT, 10"
- ② EX ORIGINAL PCC PAVEMENT
- ③ EX BINDER & SURFACE COURSES
- ④ EX BITUMINOUS SHOULDER
- ⑤ EX COMBINATION CURB & GUTTER M-6.24
- ⑥ EX COMBINATION CURB & GUTTER M-6.06
- ⑦ EX COMBINATION CURB & GUTTER SPECIAL
- ⑧ EX COMBINATION CURB & GUTTER
- ⑨ EX BITUMINOUS CONCRETE BASE COURSE WIDENING
- ⑩ EX BITUMINOUS BASE COURSE
- ⑪ EX BITUMINOUS CONCRETE BASE COURSE
- ⑫ EX CORRUGATED MEDIAN
- ⑬ EX CONCRETE MEDIAN SURFACE

FOR INFORMATIONAL  
PURPOSES ONLY

FILE NAME :	USER NAME : sporkgr	DESIGNED - MOK	REVISED -	<b>STATE OF ILLINOIS DEPARTMENT OF TRANSPORTATION</b>	<b>TYPICAL CROSS SECTIONS SIXTH STREET</b>			F.A.P. RTE. 666	SECTION (110X)-2, (SP-Z)-1	COUNTY SANDAMON	TOTAL SHEETS 29	SHEET NO. 10
PROJECT :	PROJECT :	CHECKED - RTS	REVISED -		SCALE:	SHEET 5	OF 8 SHEETS	STA.	TO STA.	CONTRACT NO. 72H0B		
PLOT SCALE : 200.0000 / 1"	DATE : 10-22-2014	DATE : 10-22-2014	REVISED -		ILLINOIS FED. AID PROJECT							
PLOT DATE : 10/30/2014												

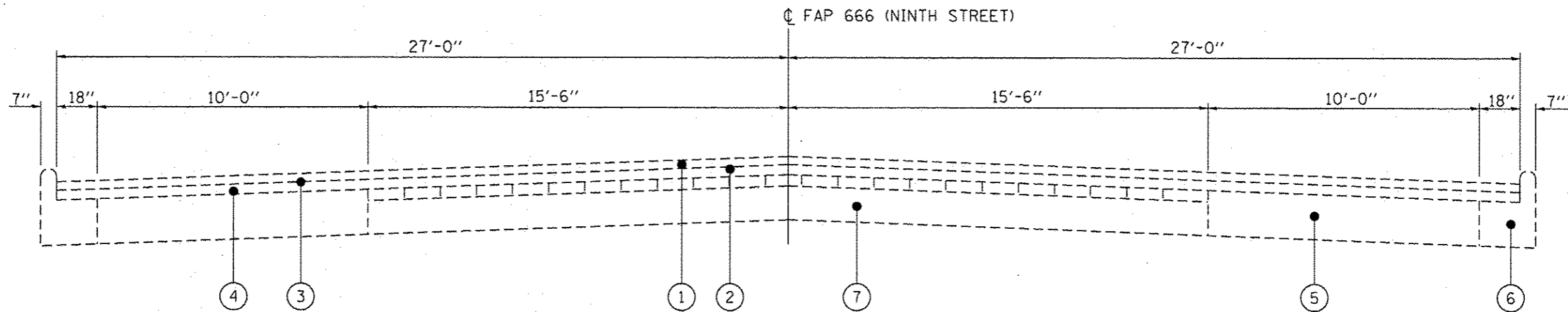


**EXISTING LEGEND**

- |  |   |
|--|---|
| ① EXISTING SUB-BASE (VARIABLE DEPTH)                               | ⑪ EXISTING COMBINATION CONCRETE CURB & GUTTER     |
| ② EXISTING PCC BASE COURSE, 6"                                     | ⑫ EXISTING CONCRETE GUTTER PAN                    |
| ③ EXISTING PCC BASE COURSE, 9"                                     | ⑬ EXISTING P.C.C. CURB & BASE COURSE WIDENING, 9" |
| ④ EXISTING PCC PAVEMENT [9"-6"-9"]                                 | ⑭ EXISTING WIDENING, 9"                           |
| ⑤ EXISTING PCC PAVEMENT [9"-7"-9"]                                 | ⑮ EXISTING BITUMINOUS CONCRETE SURFACE, 3.25"     |
| ⑥ EXISTING GRAVEL OR CRUSHED STONE BASE COURSE, TYPE A, 14"        | ⑯ EXISTING BITUMINOUS CONCRETE SURFACE, 2"        |
| ⑦ EXISTING BRICK WEARING SURFACE AND SAND CUSHION (TOTAL 3" DEPTH) | ⑰ EXISTING BITUMINOUS CONCRETE SURFACE, 2.5"      |
| ⑧ EXISTING CBM (CEMENT BOUND MATERIAL) PAVEMENT, 7"                | ⑱ EXISTING BITUMINOUS CONCRETE SURFACE, 3"        |
| ⑨ EXISTING TIE BAR, #4 AT 2'-6" CENTERS                            | ⑲ EXISTING BITUMINOUS CONCRETE SURFACE, 3.5"      |
| ⑩ EXISTING 3/8" SMOOTH BAR   | ⑳ EXISTING BITUMINOUS CONCRETE SURFACE, 4.5"      |
|  | ㉑ EXISTING BITUMINOUS CONCRETE SURFACE, 5.75"     |
|  | ㉒ EXISTING PAVEMENT FABRIC                        |

FOR INFORMATIONAL PURPOSES ONLY





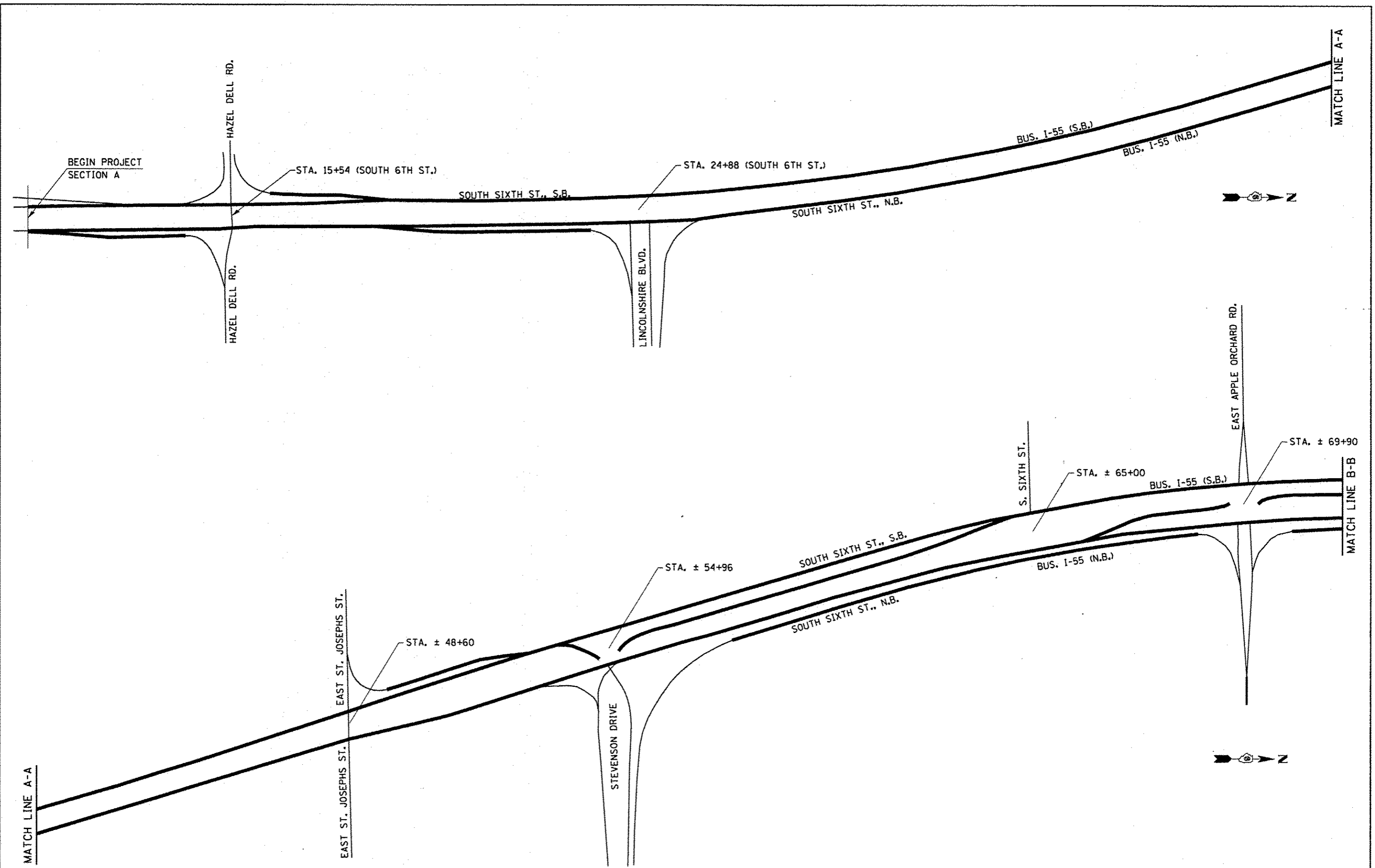
**FAP 666 (NINTH STREET)**  
 STA. 6+00.00 TO STA 12+61.50  
 CARPENTER ST. TO JUST SOUTH OF REYNOLDS ST.

EXISTING LEGEND

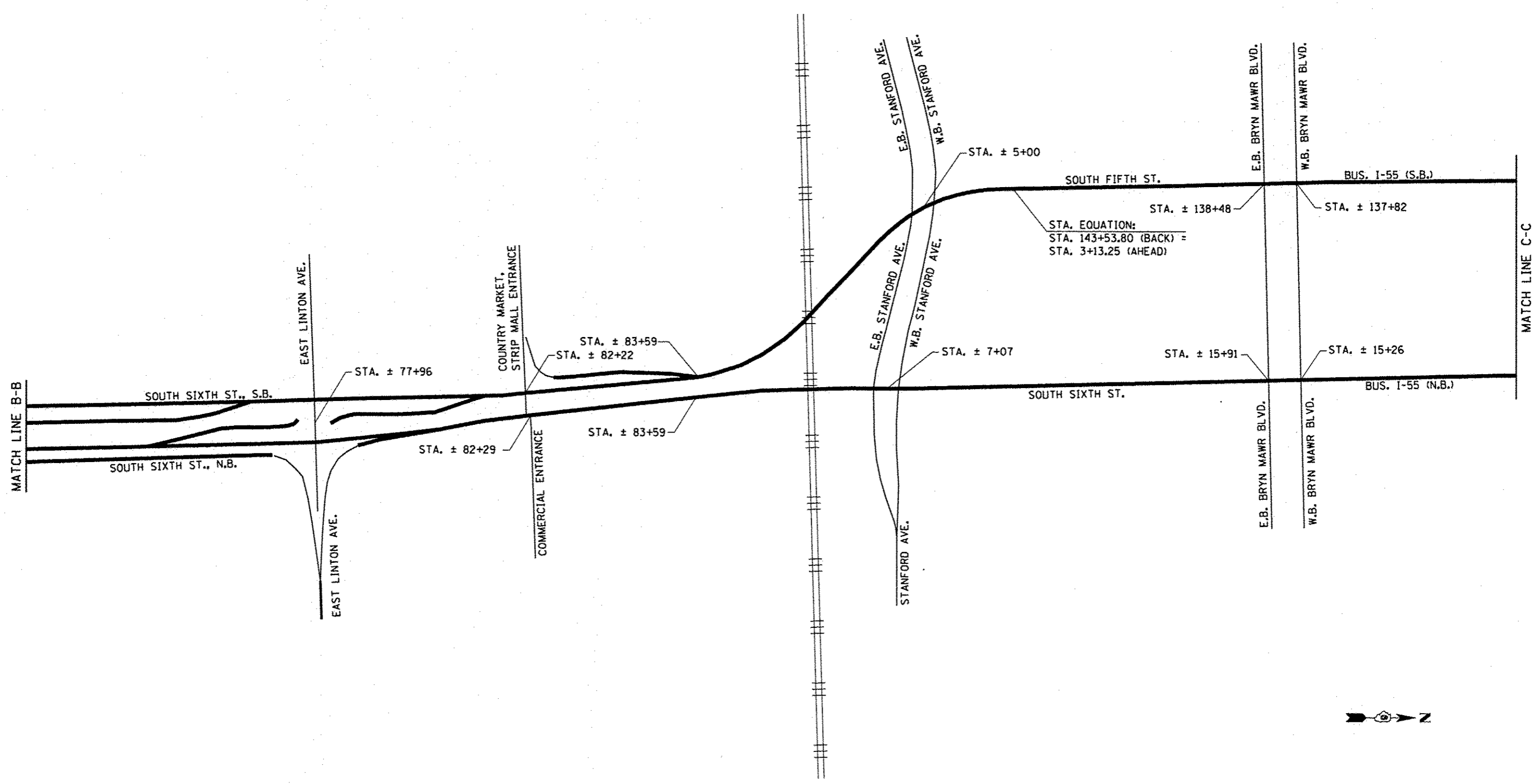
- ① EXISTING POLYMERIZED HOT-MIX ASPHALT SURFACE COURSE, MIX "D", N70 1 1/2 "
- ② EXISTING LEVELING BINDER (MACHINE METHOD), N70 3/4 "
- ③ EXISTING BITUMINOUS CONCRETE SURFACE COURSE, MIX "E", CLASS 1, TYPE 2, 1 1/2"
- ④ EXISTING BITUMINOUS RESURFACING, 1 1/2"
- ⑤ EXISTING P.C.C. PAVEMENT, 8"
- ⑥ EXISTING CONCRETE CURB AND GUTTER
- ⑦ EXISTING BRICK PAVEMENT OVER 6" CONC. BASE

FOR INFORMATIONAL  
 PURPOSES ONLY

FILE NAME : p:\11084EBIDINTEG\Illinois.gov\PI\DOT\Documents\DOT Offices\District 6\Projects\067210\067210\11084EBIDINTEG\11084EBIDINTEG.dwg	USER NAME : sparkgw	DESIGNED - MOK	REVISED -	STATE OF ILLINOIS DEPARTMENT OF TRANSPORTATION	TYPICAL CROSS SECTIONS NINTH STREET		F.A.P. RTE. 666	SECTION (110X11-2, (SP-2)1-1	COUNTY SANGAMON	TOTAL SHEETS 29	SHEET NO. 13
	PLOT SCALE = 200.0000 ' / in.	CHECKED - RTS	REVISED -		SCALE:	SHEET 8 OF 8 SHEETS	STA. TO STA.	ILLINOIS FED. AID PROJECT CONTRACT NO. 72H08			
Default	PLOT DATE = 10/30/2014	DATE - 10-22-2014	REVISED -								



FILE NAME :	USER NAME : sparkgw	DESIGNED - RTS	REVISED -	STATE OF ILLINOIS DEPARTMENT OF TRANSPORTATION	PROJECT LINE DIAGRAM		F.A.P. RTE.	SECTION	COUNTY	TOTAL SHEETS	SHEET NO.
	Default	PLOT SCALE : 200.0000 ' / in.	CHECKED -		REVISED -	SCALE:	SHEET 1 OF 4 SHEETS	STA. TO STA.	666	(110X)I-2, (SP-2)I-1	SANGAMON
	PLOT DATE : 10/30/2014	DATE : 10-22-2014	REVISED -							CONTRACT NO. 72H08	
ILLINOIS FED. AID PROJECT											

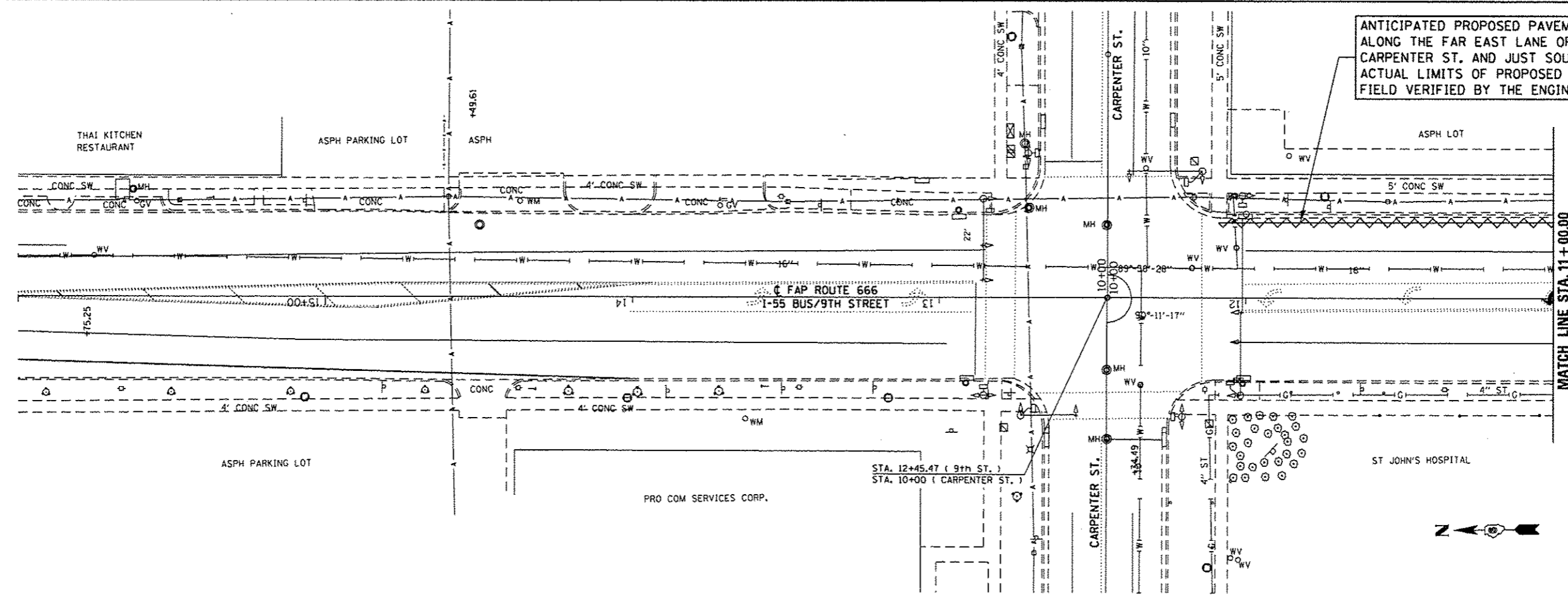


FILE NAME :	USER NAME : wparkegw	DESIGNED - RTS	REVISED -	STATE OF ILLINOIS DEPARTMENT OF TRANSPORTATION	PROJECT LINE DIAGRAM			F.A.P. RTE.:	SECTION	COUNTY	TOTAL SHEETS	SHEET NO.	
Default	Default	CHECKED -	REVISED -		SCALE:	SHEET 2 OF 4 SHEETS	STA.	TO STA.	666	(110X)-2, (SP-ZH)-1	SANGAMON	29	15
	PLOT SCALE = 200.0000' / in.	DATE - 10-22-2014	REVISED -										
	PLOT DATE = 10/30/2014												CONTRACT NO. 72408
											ILLINOIS FED. AID PROJECT		







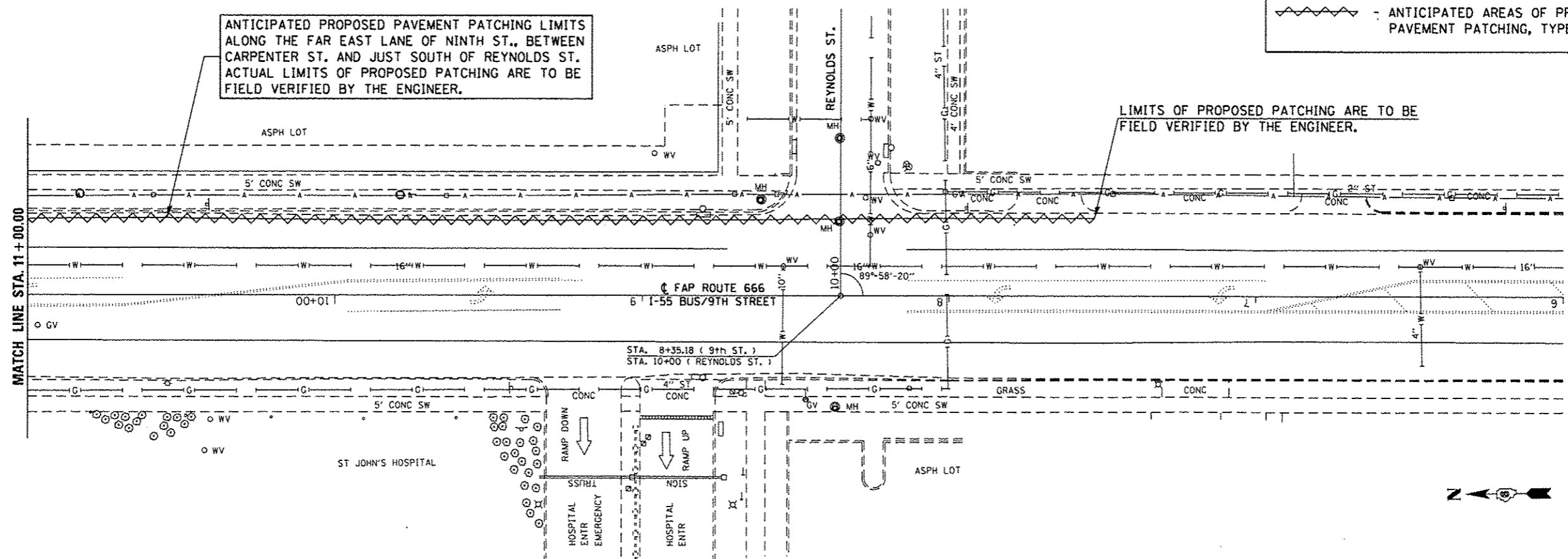


ANTICIPATED PROPOSED PAVEMENT PATCHING LIMITS ALONG THE FAR EAST LANE OF NINTH ST., BETWEEN CARPENTER ST. AND JUST SOUTH OF REYNOLDS ST. ACTUAL LIMITS OF PROPOSED PATCHING ARE TO BE FIELD VERIFIED BY THE ENGINEER.

ANTICIPATED PROPOSED PAVEMENT PATCHING LIMITS ALONG THE FAR EAST LANE OF NINTH ST., BETWEEN CARPENTER ST. AND JUST SOUTH OF REYNOLDS ST. ACTUAL LIMITS OF PROPOSED PATCHING ARE TO BE FIELD VERIFIED BY THE ENGINEER.

~ ~ ~ ~ ~ ANTICIPATED AREAS OF PROPOSED PAVEMENT PATCHING, TYPE IV

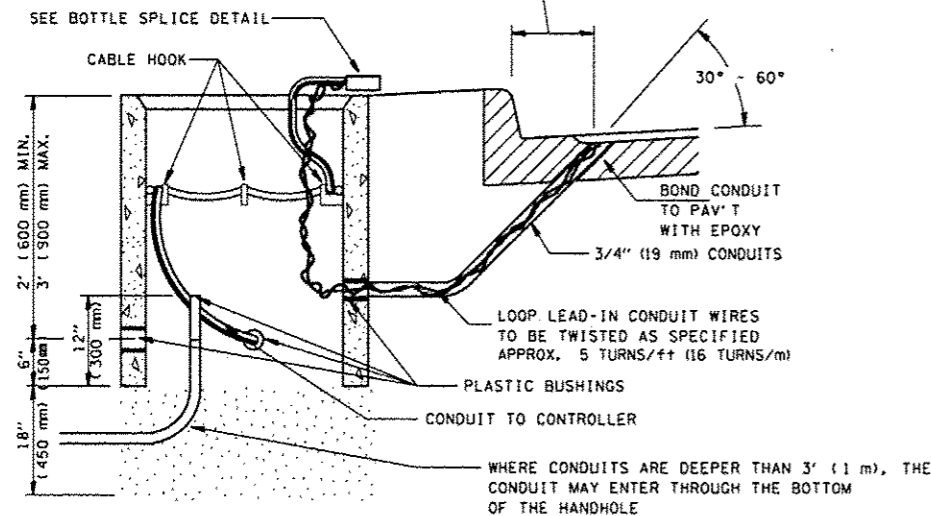
LIMITS OF PROPOSED PATCHING ARE TO BE FIELD VERIFIED BY THE ENGINEER.



FILE NAME: p:\1108\EBID\INTEC\illinois.gov\PI\DOT\Documents\1108\District 6\Projects\067\PI\1108\DATA\CAD\1108\0672H08-shr-det.dwg	USER NAME: sparksgw	DESIGNED: MOK	REVISED: RTS	<b>STATE OF ILLINOIS DEPARTMENT OF TRANSPORTATION</b>	<b>PLAN DETAILS NORTH NINTH STREET</b>	F.A.P. RTE. 666	SECTION (110X) 1-2, (SP-Z) 1-1	COUNTY SANGAMON	TOTAL SHEETS 29	SHEET NO. 18	
CONTRACT NO. 72H08	PLLOT SCALE: 200.0000' / in.	CHECKED: -	REVISED: -			SCALE: STA. TO STA.	SHEET 1 OF 1 SHEETS	ILLINOIS FED. AID PROJECT			
PLLOT DATE: 10/30/2014	DATE: 10-22-2014	REVISED: -	REVISED: -								

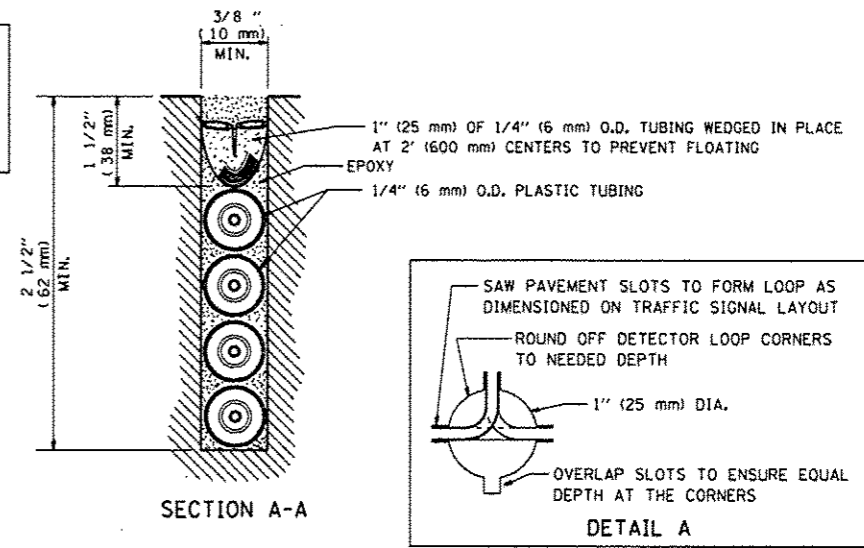
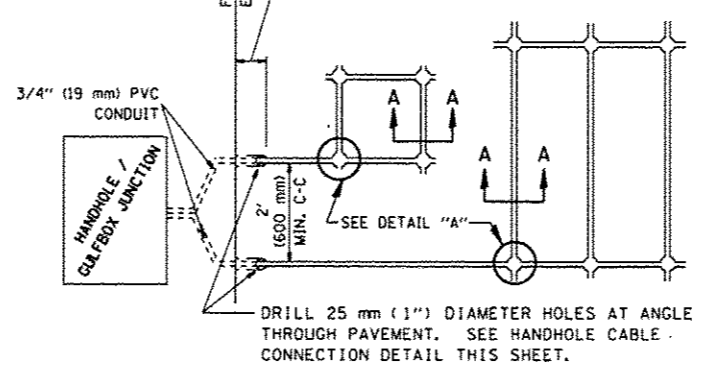
LENGTH OF SLACK FOR LOOP LEAD-INS SHALL PROVIDE FOR MAKING THE SPLICE ON TOP OF THE HANDHOLE AND ONE COMPLETE LOOP OF THE INTERIOR OF THE HANDHOLE. THE SPLICE SHALL BE SUPPORTED BY A CABLE HOOK.

THE LOOP LEAD-IN CONDUIT HOLES SHALL BE PLACED AS CLOSE TO THE CURB AS POSSIBLE TO PERMIT SAW OVERLAP WITHOUT SCARRING FACE OF CURB. IN NON-CURB LOCATIONS THE DISTANCE SHALL NOT BE LESS THAN 6" (150 mm).



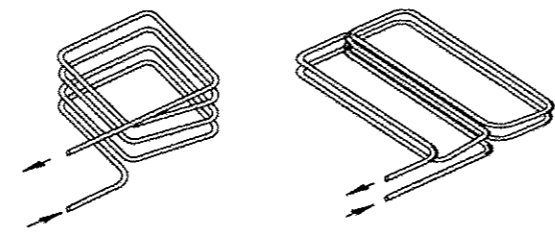
HANDHOLE CABLE CONNECTIONS

THE LOOP LEAD-IN CONDUIT HOLES SHALL BE PLACED AS CLOSE TO THE CURB AS POSSIBLE TO PERMIT SAW OVERLAP WITHOUT SCARRING FACE OF CURB. IN NON-CURB LOCATIONS THE DISTANCE SHALL NOT BE LESS THAN 6" (150 mm).



PAVEMENT SAWING DETAIL FOR TUBE ENCASED DETECTOR LOOP WIRE

DETECTOR LOOP QUADRUPOLE LOOP

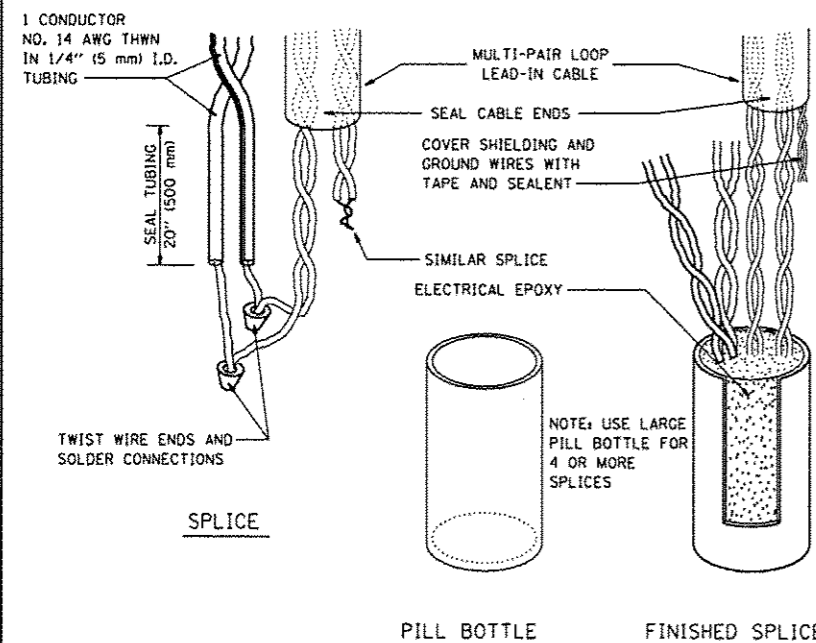


INSTALLING THE LOOP WIRE:  
THE NEGATIVE LEAD SHALL BE CONNECTED TO THE BLACK CONDUCTOR OF A PAIR OF CONDUCTORS IN THE LEAD-IN CABLE AND THE POSITIVE LEAD SHALL BE CONNECTED TO THE COLOR-CODED CONDUCTOR OF THE CABLE PAIR.

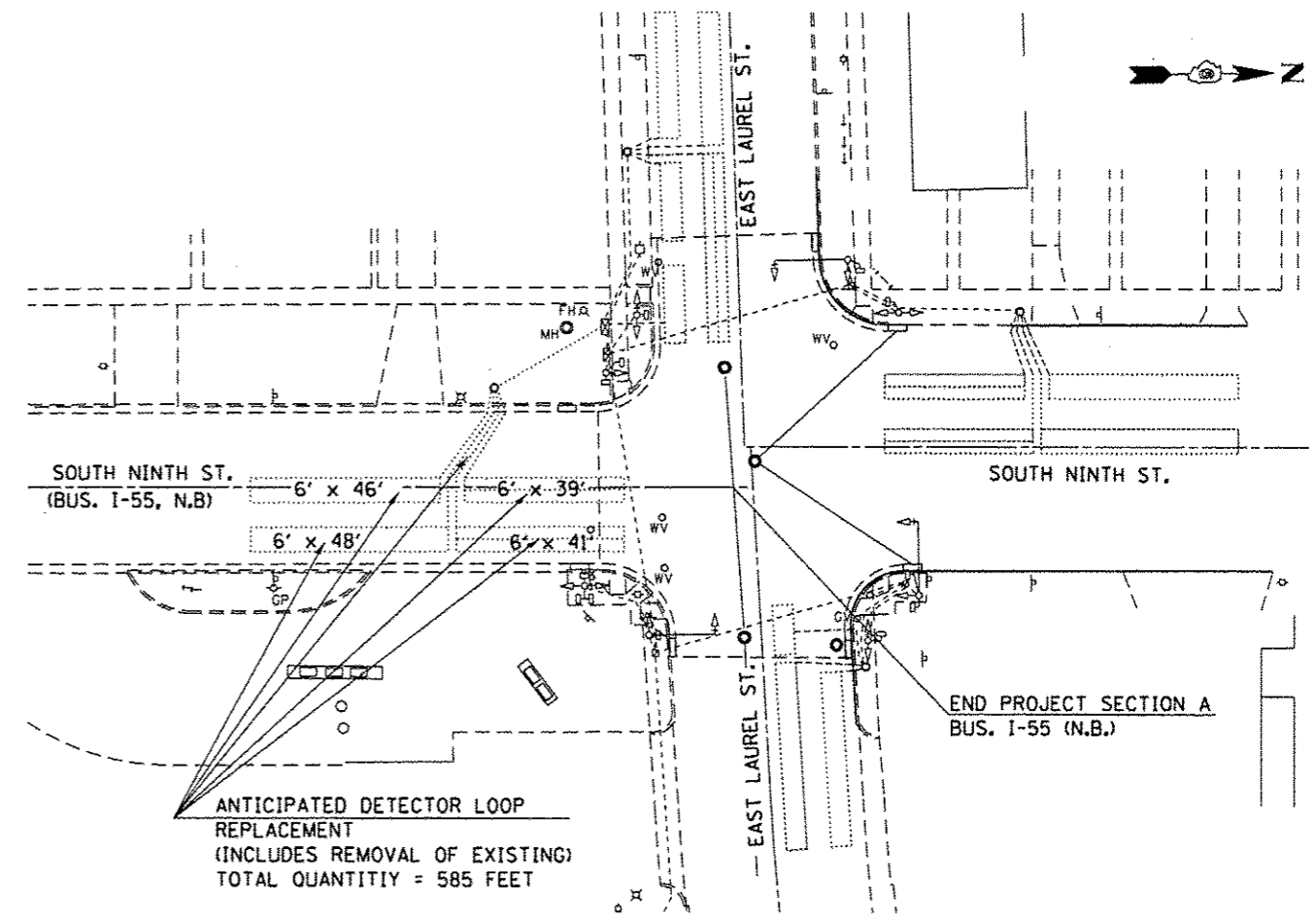
DETECTOR LOOP WIRE INSTALLATION

DETECTOR NOTES:

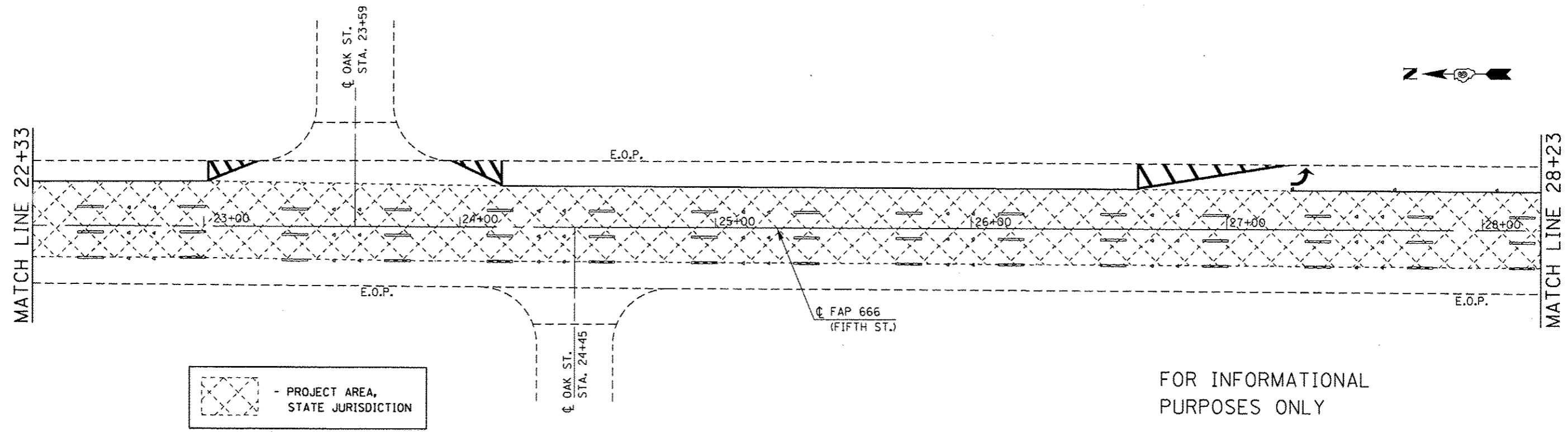
1. THE DETECTOR LOOP SHALL BE CENTERED IN THE LANE IN WHICH IT IS SHOWN. ANY ADJUSTMENTS ARE TO BE MADE ONLY AT THE DIRECTION OF THE ENGINEER.
2. THE DETECTOR LOOPS SHALL CONSIST OF THE NUMBER OF TURNS AS SHOWN IN THE PLANS OR AS DIRECTED BY THE ENGINEER.
3. ACCEPTANCE OF THE LOOPS AS METERED SHALL BE DETERMINED BY THE ENGINEER.
4. ALL DETECTOR WIRES SHALL BE MARKED WITH WATERPROOF LABELS USING THE WIRING IDENTIFICATION SHOWN ON THE PLANS. THE + AND - OF EACH LOOP MUST BE USED TO IDENTIFY CURRENT FLOW. ALWAYS CONNECT THE BLACK WIRE OF EACH PAIR TO THE NEGATIVE (-) LOOP WIRE.
5. ALL QUADRUPOLE LOOPS SHALL BE 2-4-2 DESIGN.



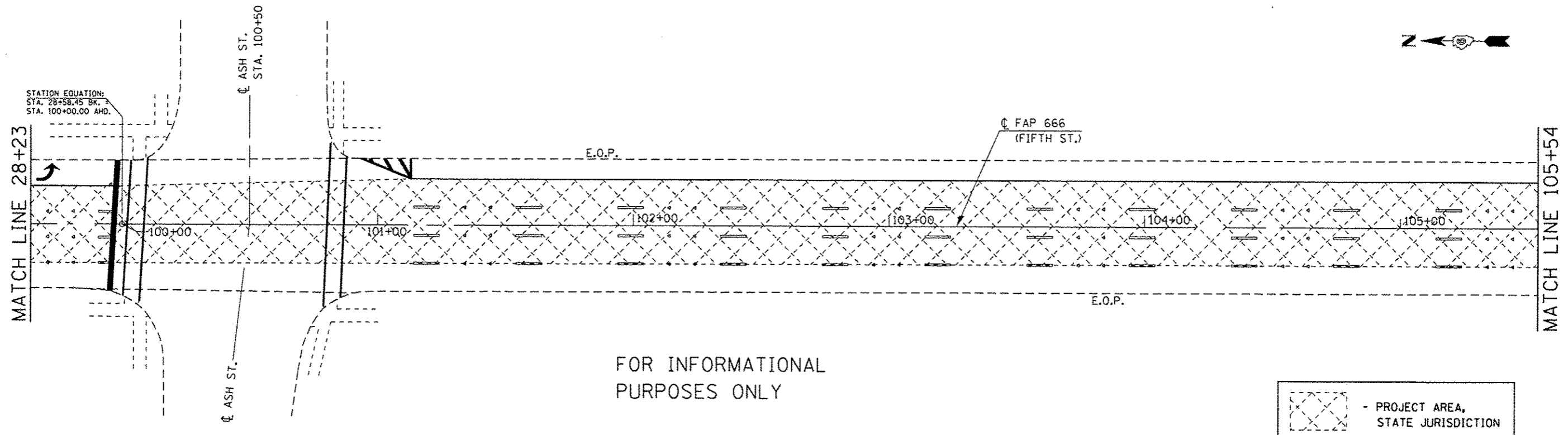
BOTTLE SPLICE DETAIL







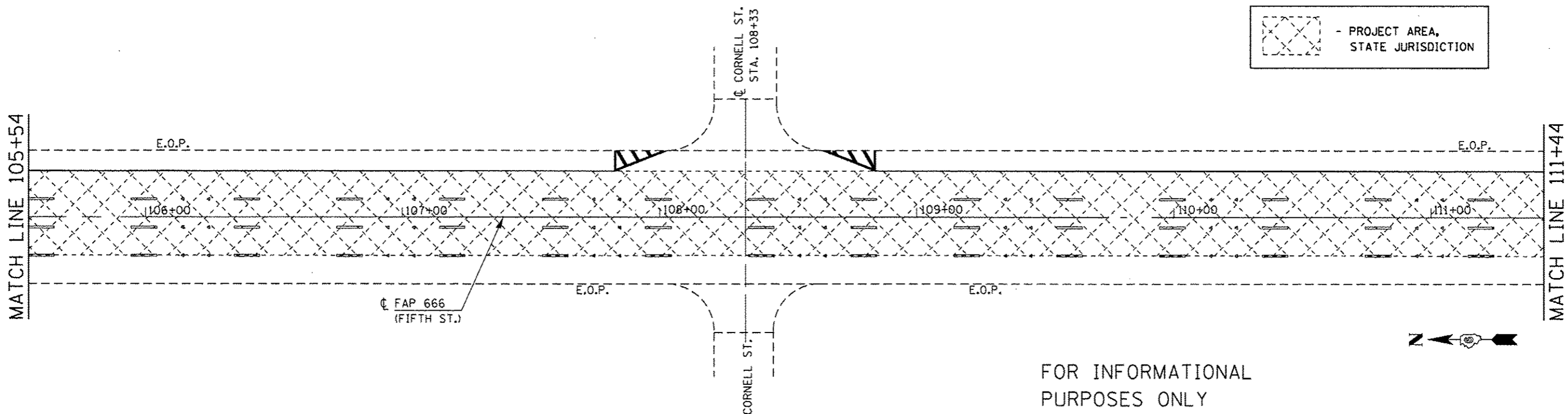
FOR INFORMATIONAL PURPOSES ONLY



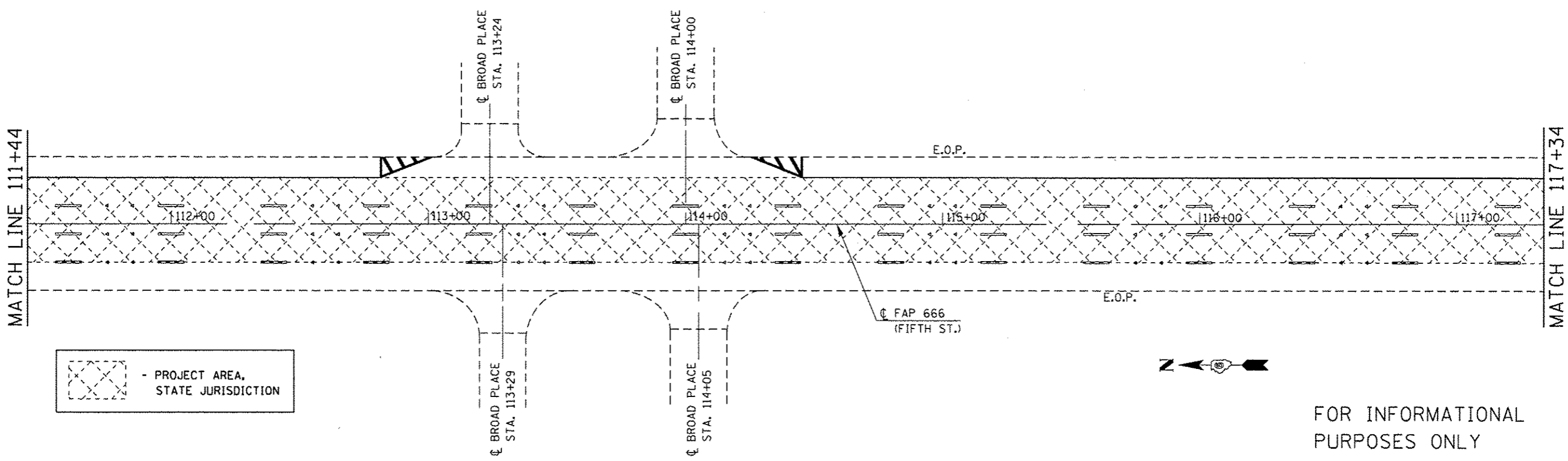
FOR INFORMATIONAL PURPOSES ONLY

FILE NAME :	USER NAME : sparkgw	DESIGNED - rfs	REVISED -	<b>STATE OF ILLINOIS DEPARTMENT OF TRANSPORTATION</b>	<b>STATE JURIDICTION LAYOUT 5TH STREET</b>				F.A.P. RTE.	SECTION	COUNTY	TOTAL SHEETS	SHEET NO.
Default	PROJECT: 06722H00-5th-st-jurisd	CHECKED - rfs	REVISED -		666	(110X) 1-2, (SP-2) 1-1	SANGAMON	29	21				
	PLLOT SCALE = 42.0000' / in.	DATE - 10-22-2014	REVISED -		SHEET 2 OF 5 SHEETS STA. TO STA.				CONTRACT NO. 72H0B				
	PLLOT DATE = 10/31/2014				ILLINOIS FED. AID PROJECT								

PROJECT AREA,  
STATE JURISDICTION



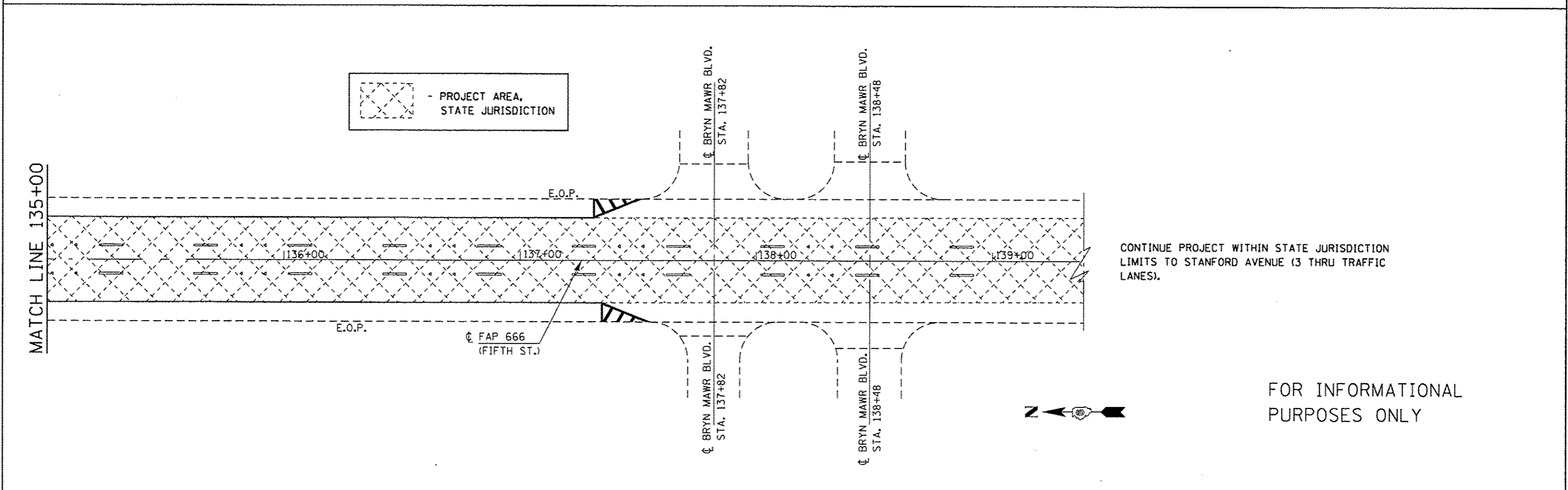
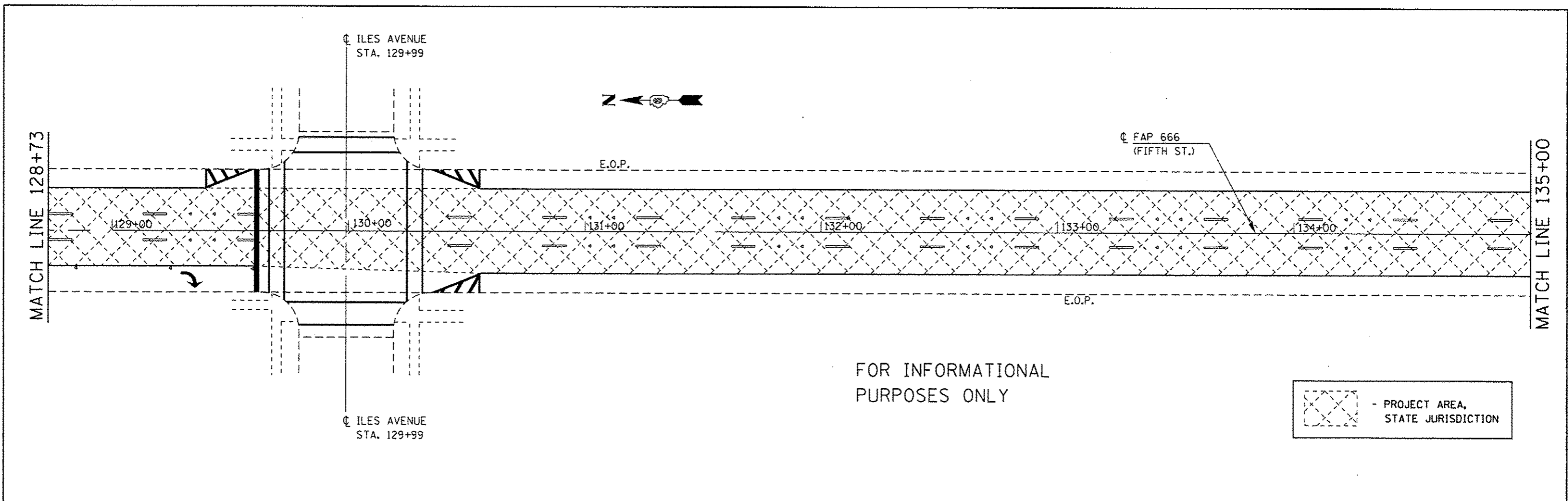
FOR INFORMATIONAL  
PURPOSES ONLY



FOR INFORMATIONAL  
PURPOSES ONLY

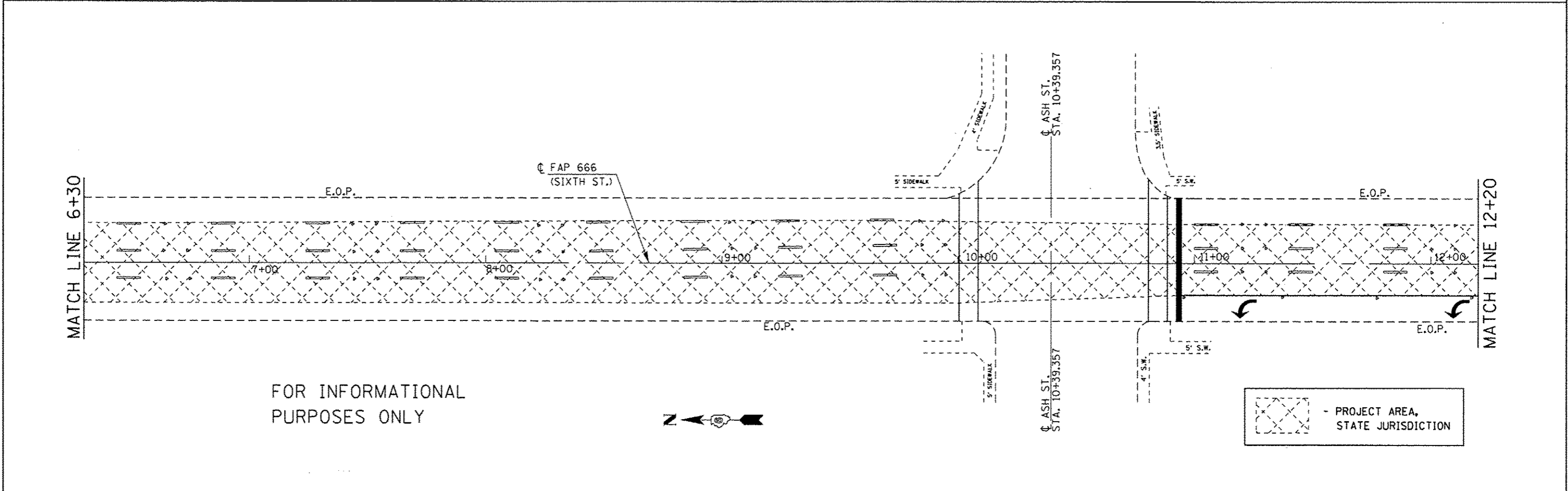
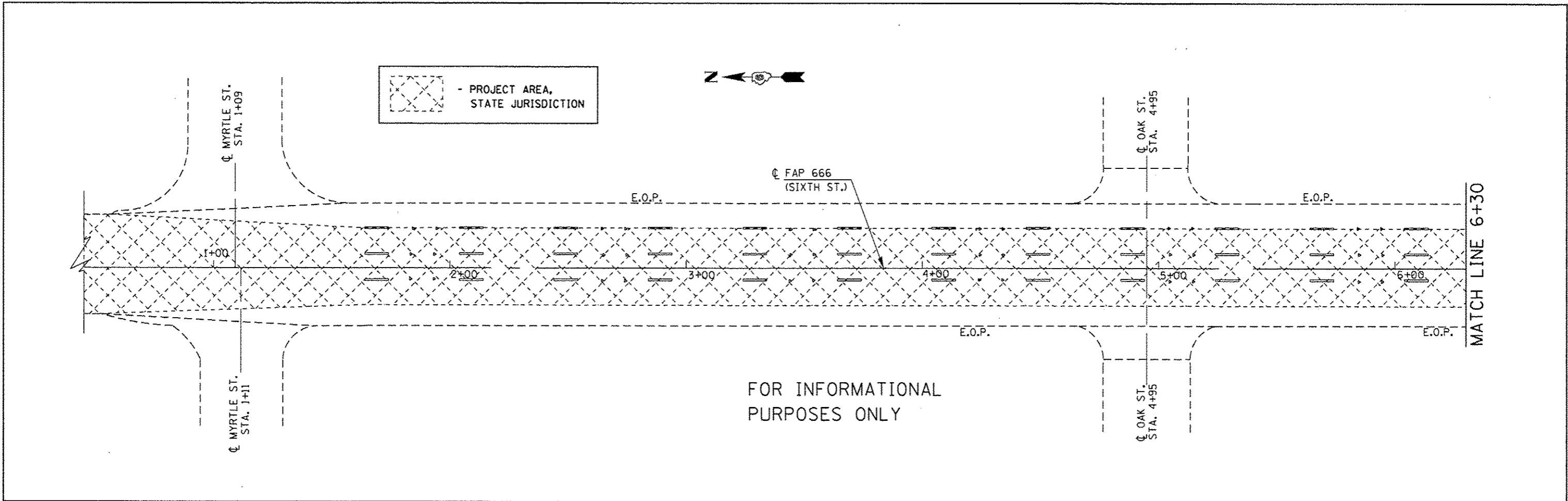
FILE NAME :	USER NAME : sparkgw	DESIGNED - rfs	REVISED -	<b>STATE OF ILLINOIS DEPARTMENT OF TRANSPORTATION</b>	<b>STATE JURISDICTION LAYOUT 5TH STREET</b>			F.A.P. RTE.	SECTION	COUNTY	TOTAL SHEETS	SHEET NO.
pw:\11084EBID\INTEG\illinois.gov\PIWIDOT\Documents\1007 Offices\District 6\Projects\0672\DRAWING\DATA\6AD\sheet\0672H08-shs-jurisd		CHECKED - rfs	REVISED -		666	(110X) I-2, (SP-2) I-1	SANGAMON	29	22			
Default	PLOT SCALE = 42.0000' / in.	DATE - 10-22-2014	REVISED -		SCALE:	SHEET 3	OF 5 SHEETS	STA.	TO STA.	CONTRACT NO. 72H08		
	PLOT DATE = 10/31/2014									ILLINOIS FED. AID PROJECT		



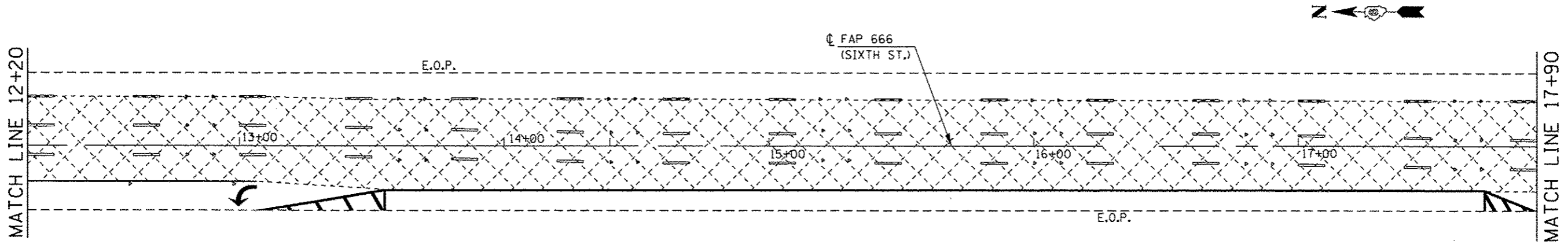


FILE NAME :	USER NAME : sparksgv	DESIGNED - rfs	REVISED -	<b>STATE OF ILLINOIS DEPARTMENT OF TRANSPORTATION</b>	<b>STATE JURISDICTION LAYOUT 5TH STREET</b>				F.A.P. RTE.	SECTION	COUNTY	TOTAL SHEETS	SHEET NO.
Default	Documents\DOT Office\Districts\6\Projects\0672H88-shr-jurisd	CHECKED - rfs	REVISED -		666	(110X) I-2, (SP-2) I-1	SANGAMON	29	24				
	PLOT SCALE = 42.8888' / in.	DATE - 10-22-2014	REVISED -		SCALE: SHEET 5 OF 5 SHEETS STA. TO STA.				CONTRACT NO. 72H08				
	PLOT DATE = 10/31/2014		REVISED -		[ILLINOIS] FED. AID PROJECT								

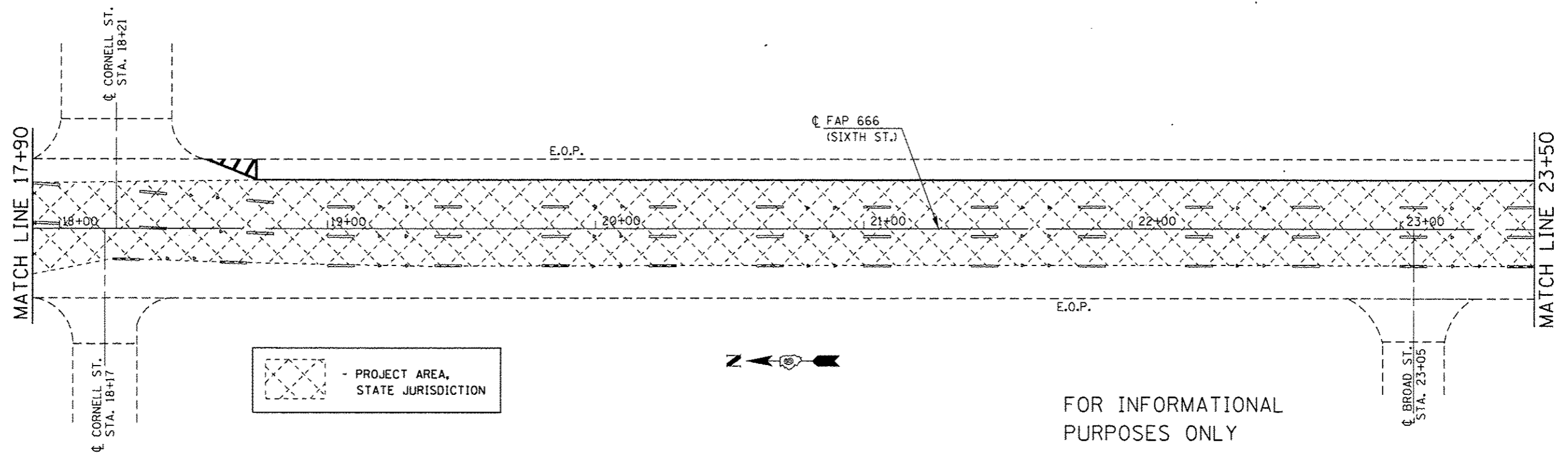
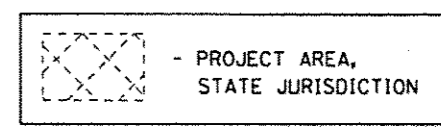




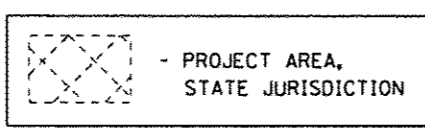
FILE NAME = p:\11084EBID\INTEG\Illinois.gov\PWDDT\Documents\DOT Offices\District 6\Projects\0672HOB\0672HOB-ehf-jurisdiction\0672HOB-ehf-jurisdiction.dwg	USER NAME = aporkgr	DESIGNED - rfs	REVISED - -	<b>STATE OF ILLINOIS DEPARTMENT OF TRANSPORTATION</b>	<b>STATE JURISDICTION LAYOUT 6TH STREET</b>		F.A.P. RTE. 666	SECTION (110X) I-2, (SP-Z) I-1	COUNTY SANGAMON	TOTAL SHEETS 29	SHEET NO. 25
	PLOT SCALE = 42.8000' / in.	CHECKED - rfs	REVISED - -		SCALE:	SHEET 1	OF 5 SHEETS	STA.	TO STA.	CONTRACT NO. 72H08	
Default	PLOT DATE = 10/31/2014	DATE = 10-22-2014	REVISED - -	ILLINOIS FED. AID PROJECT							



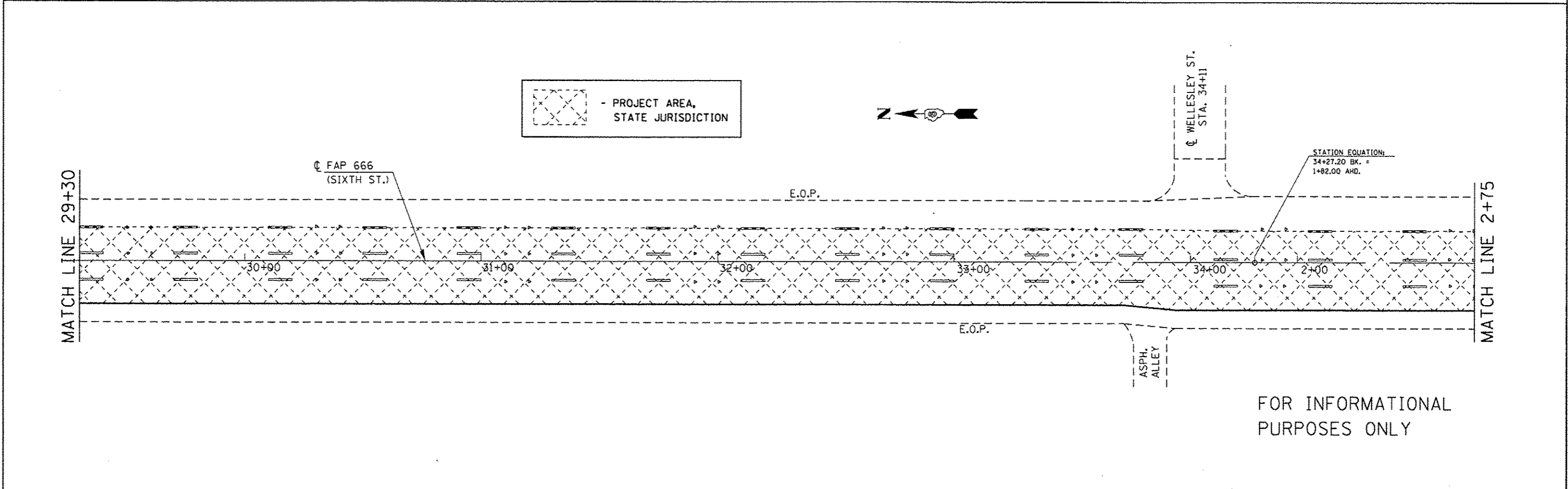
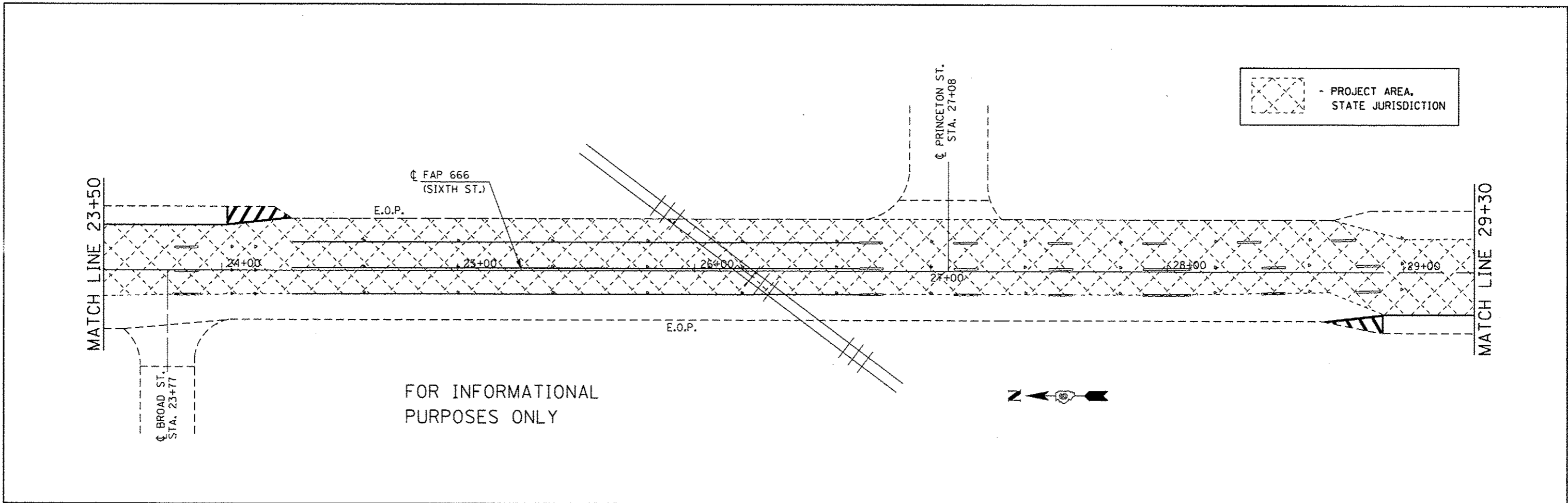
FOR INFORMATIONAL  
PURPOSES ONLY



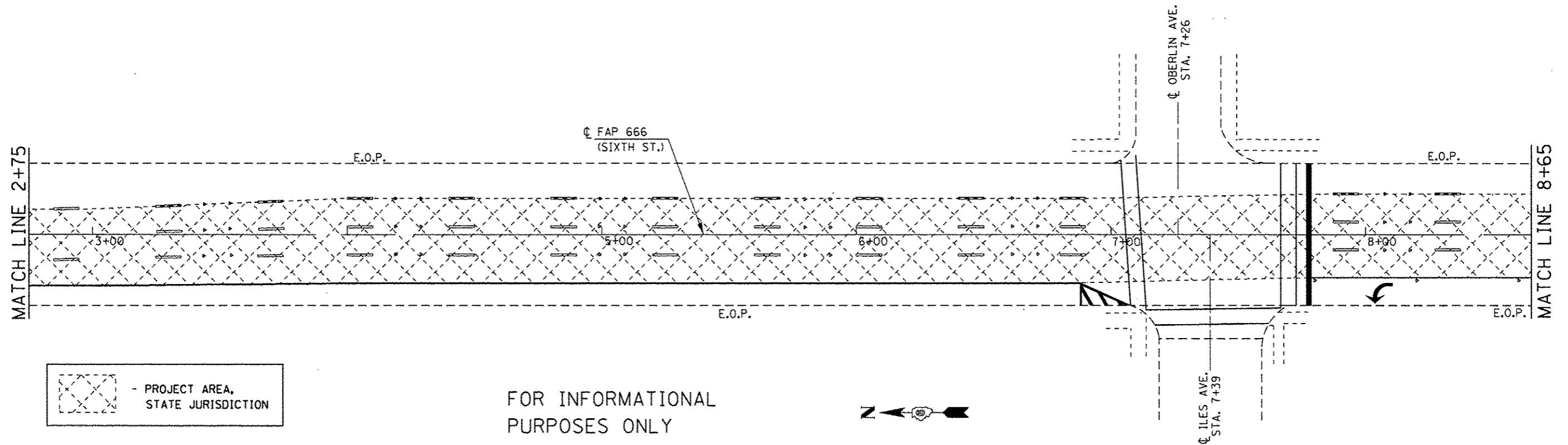
FOR INFORMATIONAL  
PURPOSES ONLY



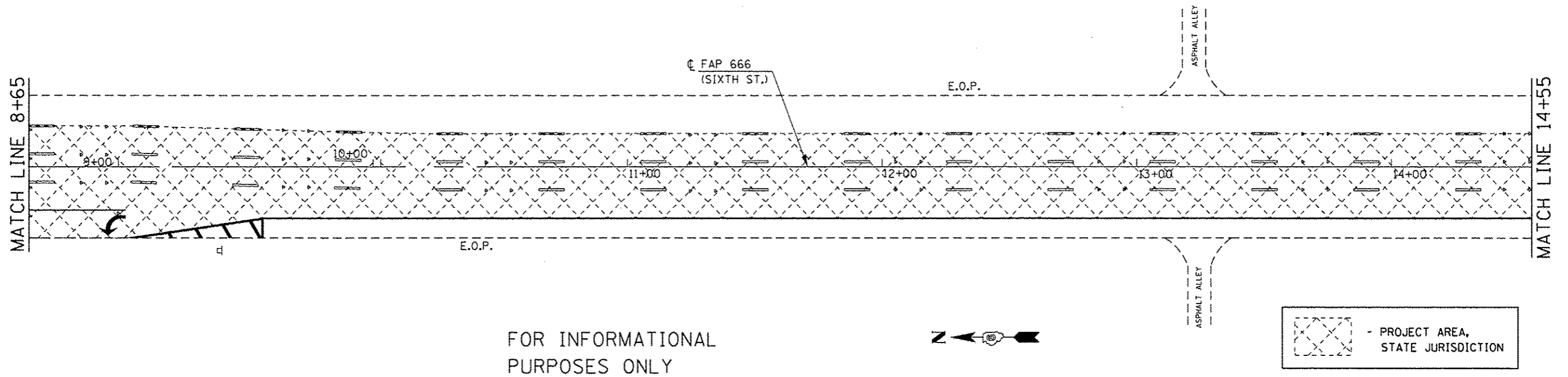
FILE NAME : pw\11084EBID\INTEC\illinois.gov\PI\DOT\Documents\1007_Offices\District 6\Projects\0672\Drawings\CAD\sheet\66722H08-shr-jurisd	USER NAME : sparkgr	DESIGNED - rts	REVISED -	STATE OF ILLINOIS DEPARTMENT OF TRANSPORTATION	STATE JURISDICTION LAYOUT 6TH STREET		F.A.P. RTE. 666	SECTION (110X) 1-2, (SP-2) 1-1	COUNTY SANGAMON	TOTAL SHEETS 29	SHEET NO. 26
	PLOT SCALE = 42.8888' / in.	CHECKED - rts	REVISED -		SCALE:	SHEET 1 OF 5 SHEETS	STA. TO STA.	CONTRACT NO. 72H08 ILLINOIS FED. AID PROJECT			
Default	PLOT DATE = 10/31/2014	DATE = 10-22-2014	REVISED -								



FILE NAME :	USER NAME : sparkgr	DESIGNED - rts	REVISED -	STATE OF ILLINOIS DEPARTMENT OF TRANSPORTATION	STATE JURISDICTION LAYOUT		F.A.P. RTE.	SECTION	COUNTY	TOTAL SHEETS	SHEET NO.
	Default	DATE - 10-22-2014	REVISED -		666	(110X) 1-2, (SP-2) 1-1	SANGAMON	29	27		
PLOT SCALE = 42,0000' / in. PLOT DATE = 10/31/2014				CHECKED - rts DATE - 10-22-2014		REVISED - REVISED -		CONTRACT NO. 72H08 ILLINOIS FED. AID PROJECT			
					SCALE:	SHEET 1 OF 5 SHEETS		STA. TO STA.			

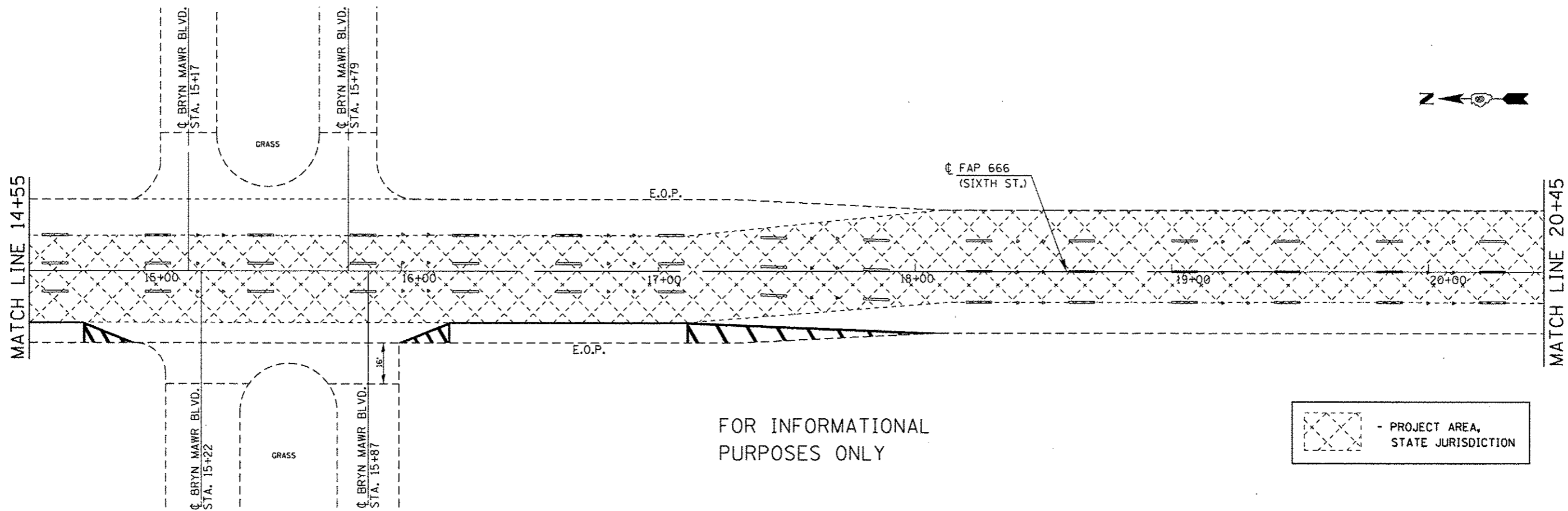


FOR INFORMATIONAL PURPOSES ONLY



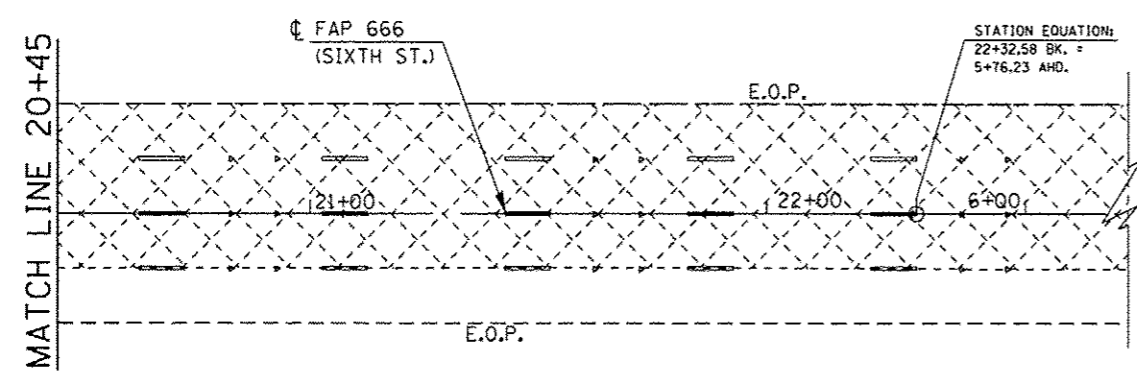
FOR INFORMATIONAL PURPOSES ONLY

FILE NAME :	USER NAME : sparkg	DESIGNED - rfs	REVISED -	<b>STATE OF ILLINOIS DEPARTMENT OF TRANSPORTATION</b>	<b>STATE JURISDICTION LAYOUT 6TH STREET</b>				F.A.P. RTE. 666	SECTION (110X) 1-2, (SP-2) 1-1	COUNTY SANDAMON	TOTAL SHEETS 29	SHEET NO. 28
Default	PLOT SCALE = 42,0000' / in.	CHECKED - rfs	REVISED -		SCALE:	SHEET 1	OF 5 SHEETS	STA.	TO STA.	CONTRACT NO. 72H08			
	PLOT DATE = 10/31/2014	DATE = 10-22-2014	REVISED -		ILLINOIS FED. AID PROJECT								



FOR INFORMATIONAL PURPOSES ONLY

	- PROJECT AREA, STATE JURISDICTION
--	------------------------------------



CONTINUE PROJECT WITHIN STATE JURISDICTION LIMITS TO STANFORD AVENUE (3 EASTERN THRU TRAFFIC LANES).

FOR INFORMATIONAL PURPOSES ONLY

	- PROJECT AREA, STATE JURISDICTION
--	------------------------------------

FILE NAME :	USER NAME : sparksgw	DESIGNED - rfs	REVISED -	STATE OF ILLINOIS DEPARTMENT OF TRANSPORTATION	STATE JURISDICTION LAYOUT				F.A.P. RTE.	SECTION	COUNTY	TOTAL SHEETS	SHEET NO.
	666	(110X) 1-2, (SP-2) 1-1	SANGAMON		29	29							
Default	PLOT SCALE = 42,0000' / 1" =	CHECKED - rfs	REVISED -	CONTRACT NO. 72H08	ILLINOIS FED. AID PROJECT								
	PLOT DATE = 10/31/2014	DATE = 10-22-2014	REVISED -	SCALE:	SHEET 1	OF 5	SHEETS	STA.	TO STA.				