

06-12-2015 LETTING ITEM 103

STATE OF ILLINOIS
DEPARTMENT OF TRANSPORTATION
DIVISION OF HIGHWAYS

F.A.U. RTE.	SECTION	COUNTY	TOTAL SHEETS	SHEET NO.
7972	(11) RS-5	SANGAMON	10	1
		ILLINOIS	CONTRACT NO. 72H26	

INDEX OF SHEETS

- 1 COVER SHEET
- 2 GENERAL NOTES/COMMITMENTS
- 3 SUMMARY OF QUANTITIES
- 4 SCHEDULE OF QUANTITIES
- 5 TYPICAL SECTIONS AND BUTT JOINT DETAIL
- 6-8 PLAN LINE DIAGRAM
- 9-10 ENTRANCE AND SIDEROAD DETAILS

ADT: 10,500 (2012)
PV: 96.22%
MU: 0.93%
SU: 2.85%

DESIGN SPEED: 35 MPH
POSTED SPEED: 30 MPH

MINOR ARTERIAL

STANDARDS

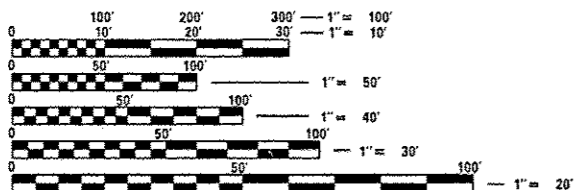
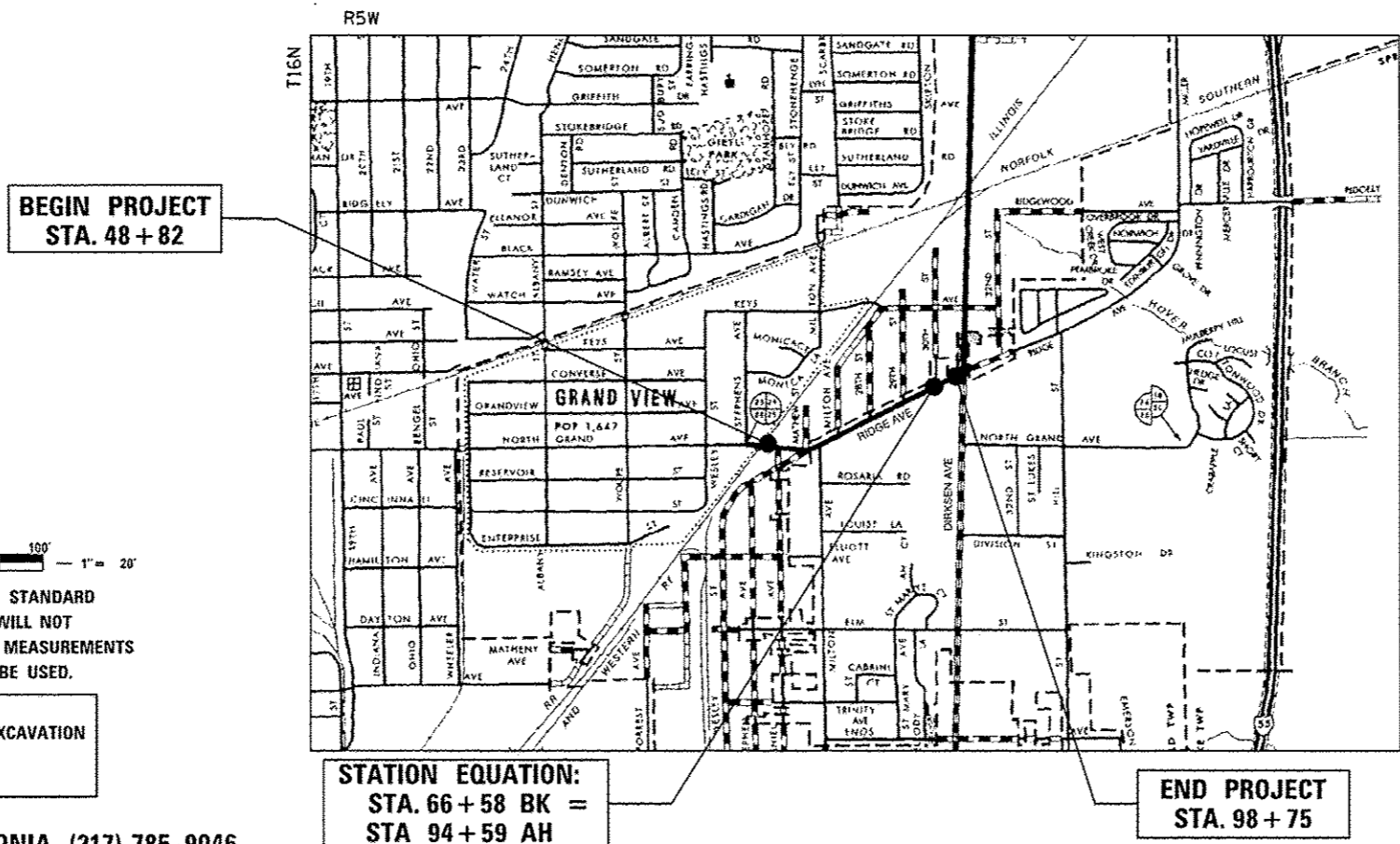
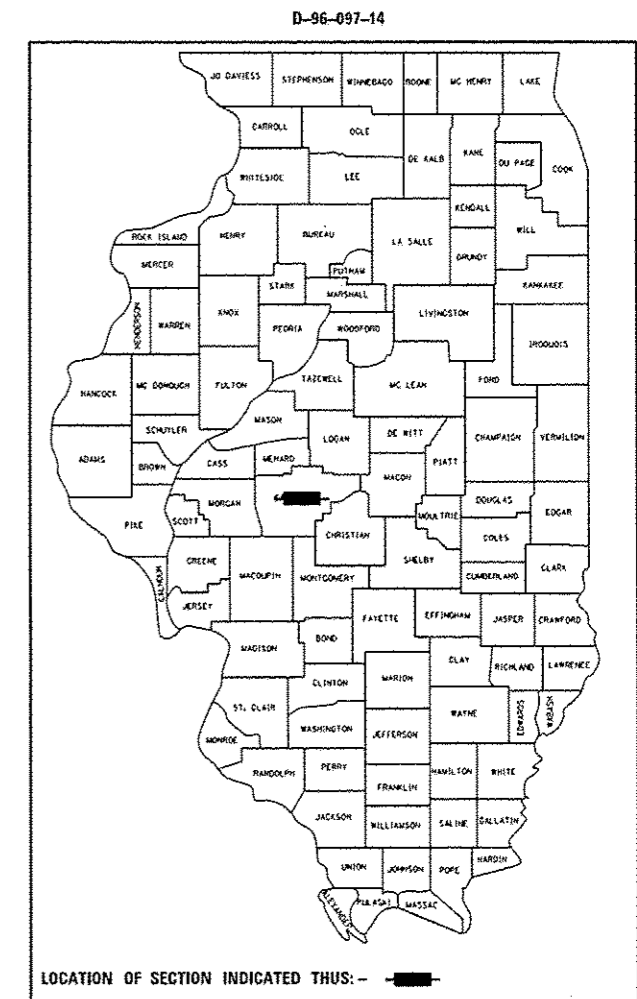
- 000001-06
- 001006
- 442201-03
- 701501-06
- 701701-09
- 701901-03
- 780001-04
- 781001-03
- BLR 25-1

PROPOSED
HIGHWAY PLANS

FAU ROUTE 7972 (RIDGE AVE.)
SECTION (11) RS-5

RESURFACING AND PATCHING
SANGAMON COUNTY

C-96-097-14



FULL SIZE PLANS HAVE BEEN PREPARED USING STANDARD ENGINEERING SCALES. REDUCED SIZED PLANS WILL NOT CONFORM TO STANDARD SCALES. IN MAKING MEASUREMENTS ON REDUCED PLANS, THE ABOVE SCALES MAY BE USED.

J.U.L.I.E.
JOINT UTILITY LOCATION INFORMATION FOR EXCAVATION
1-800-892-0123
OR 811

PROJECT ENGINEER: VINCE MADONIA (217) 785-9046
PROJECT MANAGER: JAY EDWARDS (217) 785-5321

CONTRACT NO. 72H26

GROSS LENGTH = 2192.00 FT. = 0.415 MILE
NET LENGTH = 2192.00 FT. = 0.415 MILE

STATE OF ILLINOIS
DEPARTMENT OF TRANSPORTATION
DIVISION OF HIGHWAYS

SUBMITTED *May 21, 2014*
Roger J. Dickel
DEPUTY DIRECTOR OF HIGHWAYS, REGION ENGINEER

May 8, 2015
John D. Baranzelli, PE, P.E.
ENGINEER OF DESIGN AND ENVIRONMENT

May 8, 2015
Omer Osman, PE, P.E.
DIRECTOR OF HIGHWAYS, CHIEF ENGINEER

PRINTED BY THE AUTHORITY
OF THE STATE OF ILLINOIS

GENERAL NOTES

1. ANY REFERENCE TO A STANDARD IN THESE PLANS SHALL BE INTERPRETED TO MEAN THE EDITION AS INDICATED BY THE SUB NUMBER LISTED IN THE INDEX OF SHEETS OR THE COPY OF THE STANDARD INCLUDED IN THESE PLANS.
2. IN ADDITION TO FIELD SURVEYS, PLAN DIMENSIONS AND DETAILS RELATIVE TO THE EXISTING FACILITIES HAVE BEEN TAKEN FROM EXISTING PLANS AND ARE SUBJECT TO CONSTRUCTION VARIATIONS. IT SHALL BE THE CONTRACTOR'S RESPONSIBILITY TO VERIFY SUCH DIMENSIONS AND DETAILS IN THE FIELD. SUCH VARIATIONS SHALL NOT BE A CAUSE FOR ADDITIONAL COMPENSATION DUE TO A CHANGE IN THE SCOPE OF WORK; HOWEVER, THE CONTRACTOR WILL BE PAID FOR THE QUANTITY ACTUALLY FURNISHED AT THE UNIT PRICE BID FOR THE WORK.
3. ACCESS TO ALL ENTRANCES AND SIDE ROADS SHALL BE MAINTAINED AT ALL TIMES.
4. THE CONTRACTOR SHALL BE RESPONSIBLE FOR PROTECTING UTILITY PROPERTY FROM CONSTRUCTION OPERATIONS, AS OUTLINED IN ARTICLE 107.31 OF THE STANDARD SPECIFICATIONS. THE J.U.L.I.E. NUMBER IS 1-800-892-0123. A MINIMUM OF 48 HOURS ADVANCE NOTICE IS REQUIRED.
5. THE THICKNESS OF BITUMINOUS MIXTURES SHOWN ON THE PLANS IS THE NOMINAL THICKNESS. DEVIATIONS FROM THE NOMINAL THICKNESS WILL BE PERMITTED WHEN SUCH DEVIATIONS OCCUR DUE TO IRREGULARITIES IN THE EXISTING SURFACE OR BASE ON WHICH THE BITUMINOUS MIXTURE IS PLACED.
6. ALL SAW CUTS, NECESSARY TO COMPLETE THE WORK DETAILED IN THESE PLANS, SHALL BE INCLUDED IN THE COST FOR THE VARIOUS PAY ITEMS INVOLVED. THE MINIMUM SAW CUT DEPTH IN THE PAVEMENT SHALL BE 1 1/2 " UNLESS OTHERWISE SPECIFIED IN A DETAIL SHOWN IN THE PLANS.
7. UNLESS DIRECTED BY THE ENGINEER, PAVEMENT MARKING LINES SHALL NOT BE LAID DIRECTLY OVER A LONGITUDINAL CRACK OR JOINT NOR OVER A TAR OR ASPHALT PAINTED LINE. THE EDGE OF A CENTERLINE OR LANE LINE SHALL BE OFFSET A MINIMUM DISTANCE OF 2" FROM A LONGITUDINAL CRACK OR JOINT. EDGE LINES SHALL BE APPROXIMATELY 2" FROM THE EDGE LINE OF PAVEMENT. SEE SECTION 780 OF THE STANDARD SPECIFICATIONS FOR TRAFFIC CONTROL ITEMS.
8. NO PASSING ZONES TO BE FIELD VERIFIED BY THE BUREAU OF OPERATIONS. THE RESIDENT ENGINEER SHALL NOTIFY THE BUREAU OF OPERATIONS AT LEAST 14 DAYS PRIOR TO PLACEMENT OF FINAL PERMANENT PAVEMENT MARKING. (PH: 217-785-5312)
9. THE FOLLOWING RATES OF APPLICATION HAVE BEEN USED TO CALCULATE THE PLAN QUANTITIES:

BITUMINOUS MATERIALS (PRIME COAT)	0.00038 TON/SQ. YD. (ON PAVEMENT)
BITUMINOUS MATERIALS (PRIME COAT)	0.001425 TON/SQ. YD. (ON AGG.)
AGGREGATE PRIME COAT	0.002 TON/SQ. YD.
BITUMINOUS CONCRETE SURFACE / BINDER	0.056 TON/SQ. YD. PER 1"
AGGREGATE MATERIAL	2.05 TON/CU. YD.
10. THE EXISTING ROAD SIGNS THAT INTERFERE WITH CONSTRUCTION WILL BE REMOVED OR RELOCATED AS DIRECTED BY THE ENGINEER. AFTER THE CONSTRUCTION IS COMPLETED, THE CONTRACTOR WILL REPLACE THE SIGNS AS DIRECTED BY THE ENGINEER. THIS WORK WILL NOT BE PAID SEPARATELY BUT SHALL BE CONSIDERED INCLUDED IN THE CONTRACT, AND NO COMPENSATION WILL BE ALLOWED.
11. NO COMMITMENTS MADE.

THE FOLLOWING MIXTURE REQUIREMENTS ARE APPLICABLE FOR THIS PROJECT:

MIXTURE USE(S):	HMA SURFACE COURSE AND INCIDENTAL HMA SURFACE	PATCHING
PG:	PG 64-22	PG 64-22
DESIGN AIR VOIDS:	4.0% @ N 50	4.0% @ N 50
MIXTURE COMPOSITION: (GRADATION MIXTURE)	IL 9.5	IL 19.0
FRICITION AGGREGATE:	MIX "D"	N/A
20 YEAR ESAL	N/A	N/A

DISTRICT SIX 6

EXAMINED May 19th 20 14
John C. W...
 OPERATIONS ENGINEER

EXAMINED May 16 20 14
Jeffrey P. Meyer
 PROGRAM DEVELOPMENT ENGINEER

EXAMINED May 20 20 14
Tom...
 PROJECT IMPLEMENTATION ENGINEER

FILE NAME :	USER NAME :	DESIGNED -	REVISED -	STATE OF ILLINOIS DEPARTMENT OF TRANSPORTATION	GENERAL NOTES	F.A.U. RTE.	SECTION	COUNTY	TOTAL SHEETS	SHEET NO.	
...	...	DRAWN -	REVISED -			1972	(11) RS-5	SANGAMON	10	2	
...	...	CHECKED -	REVISED -			CONTRACT NO. 72H26					
...	...	DATE -	REVISED -			ILLINOIS FED. AID PROJECT					
...	...	DATE -	REVISED -	SCALE:	SHEET 2	OF 10	SHEETS	STA.	TO STA.	...	

RESURFACING SCHEDULE (MAINLINE PAVEMENT)									
Location	Sta to Sta		LENGTH	PAVT WIDTH	ROAD AREA	HMA SURF REM.	HMA SURF REM VAR DEPTH	BIT (PRIME COAT)	HMA SURFACE, 1-1/2"
	FT	FT	SQ YD	SQ YD	SQ YD	POUNDS	TON		
Ridge Ave	48+82	66+58	1776	22	4,341.3	24.4	4316.9	2,930.40	364.7
	66+58	94+59	STATION EQUATION						
	94+59	96+30	171	24	456.0		456.0	307.80	38.3
	96+30	97+43	113	Variable	376.7		376.7	254.25	31.6
	97+43	98+60	117	36	468.0		468.0	315.90	39.3
	98+60	98+75	15	Variable	67.8	47.8	20.0	45.77	5.7
Total			2192		5,709.8	72.2	5,637.6	3,854.1	479.6
Use					5710	72	5638	3855	480

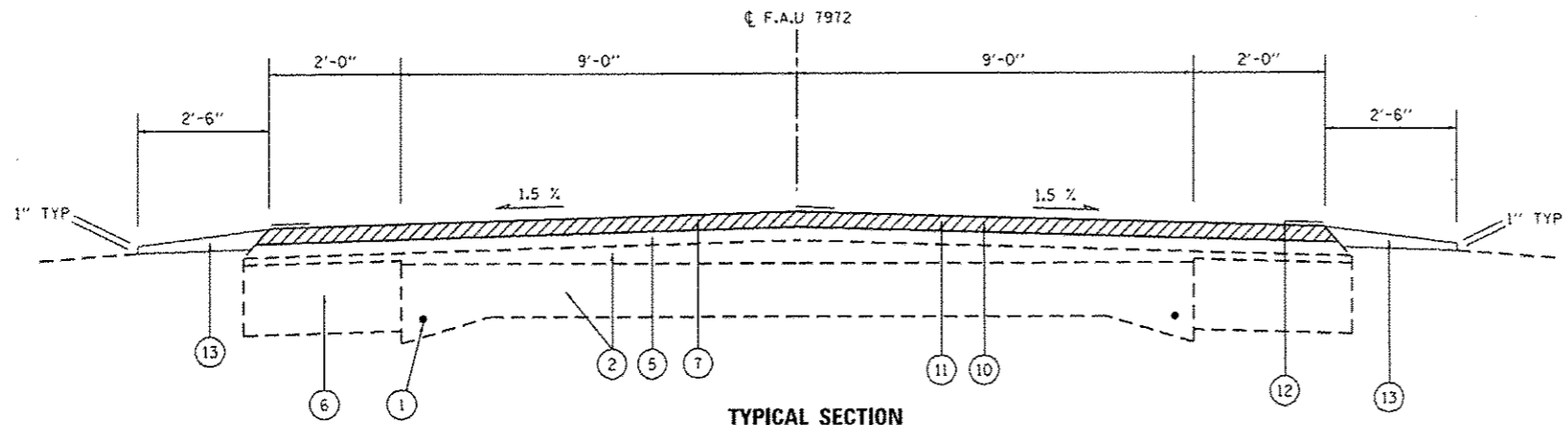
AGGREGATE WEDGE SHOULDER SCHEDULE						
Location	Sta to Sta		LENGTH	AGG SHLD WIDTH	AVERAGE DEPTH	AGG SHOULDER 1.5"
	FT	FT	FT	TON		
Ridge Ave	48+82	66+58	1,776.0	2.5	0.13	70.2
	66+58	94+59	STATION EQUATION			
	94+59	96+00	141.0	2.5	0.13	5.6
	Entrance Omission		1,513.0	2.5	0.13	-29.9
Total			1917.0			45.9
Use			1917			46

TEMPORARY RAMP SCHEDULE				
Location	LT/RT	LENGTH	PAVT WIDTH @ EOP	RAMP AREA
		FT	FT	SQ YD
48+07		5	22	12.2
DANIEL RD	RT	5	46	22.8
MATTHEW ST	LT	5	40	19.4
RIDGE AVE	RT	5	43	21.1
MILTON ST	RT	5	50	25.0
MILTON ST	LT	5	38	18.3
MOBILE HOME PARK	RT	5	50	25.0
28TH ST	LT	5	38	18.3
29TH ST	LT	5	38	18.3
30TH ST	LT	5	38	18.3
98+75		5	43	21.1
Total				219.8
Use				220

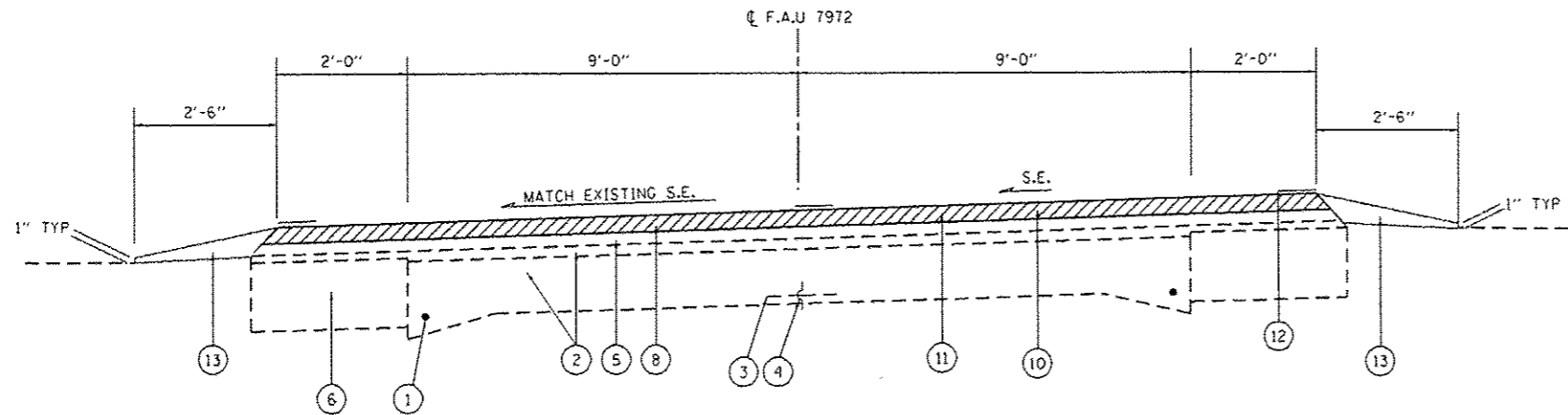
TEMPORARY PAVEMENT MARKING SCHEDULE			
Location	LENGTH	SHORT TERM PAVEMENT MARKING	SHORT TERM PAVT MARKING REM
		Center Skip Dash	
Ridge Ave	FT	FT	SQ FT
	2,192.0	438	73
Total		438.4	73.1
Use		438	73

PAVEMENT MARKING SCHEDULE									
Location	THERMOPLASTIC PAVT MARKING							RAISED REFL. PAVT. MARKER	
	LENGTH	5" DOUBLE YELLOW	5" EDGE WHITE	5" SKIP-DASH YELLOW	6" LINE WHITE	24" LINE WHITE	LETTERS AND SYMBOLS	REMOVE EACH	REPLACE EACH
Ridge Ave	2,192.0	2682.0	4384.0	215	132.0	33.0	144.4	27	27
Total		2682.0	4384.0	215	132.0	33.0	144.4	27	27
Use		2682	4384	215	132	33	144	27	27

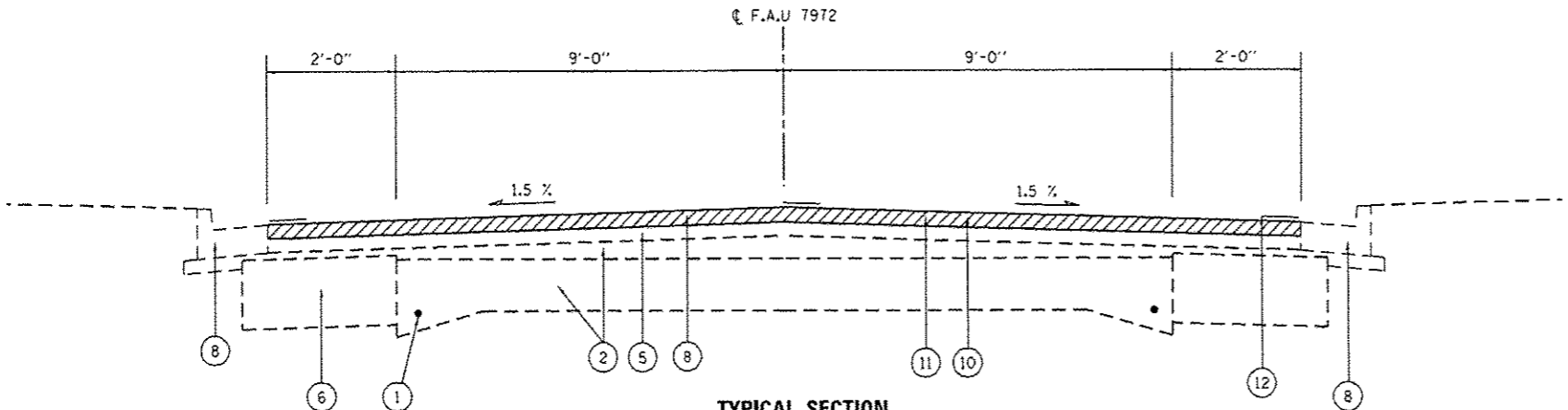
SIDE ROAD AND ENTRANCE IMPROVEMENT SCHEDULE									
Location	LT/RT	TYPE OF ENTRANCE	STREET NAME	ENTRANCE/SIDE ROAD WIDTH	WIDTH @ EOP	IMPROVEMENT FROM EOP	AREA	HMA SURF REM. BUTT JOINT	INCIDENTAL HMA SURF.
				FT	FT	FT	SQ YD	SQ YD	TON
1	RT		DANIEL RD	26	46	10	40.0	40.0	3.4
2	RT	CE		35	55	10	50.0	50.0	4.2
3	LT	CE		35	55	10	50.0	50.0	4.2
4	RT	CE		35	55	10	50.0	50.0	4.2
5	RT	CE		25	45	10	38.9	38.9	3.3
6	LT	CE		35	55	10	50.0	50.0	4.2
7	RT	CE		24	44	10	37.8	37.8	3.2
8	LT		MATTHEW ST	20	40	15	50.0	50.0	4.2
9	RT		RIDGE AVE	27	43	60	233.3	233.3	19.6
10	LT	PE		16	32	8	21.3	21.3	1.8
11	RT		MILTON ST	30	50	50	222.2	222.2	18.7
12	LT	CE		25	45	10	38.9	38.9	3.3
13	LT	CE		25	45	10	38.9	38.9	3.3
14	LT	CE	MILTON ST	18	38	15	46.7	46.7	3.9
15	LT	CE		25	45	10	38.9	38.9	3.3
16	LT	CE		25	45	10	38.9	38.9	3.3
17	LT	PE		16	36	8	23.1	23.1	1.9
18	RT		MOBILE HOME PARK	20	45	10	36.1	36.1	3.0
19	LT	CE		24	44	10	37.8	37.8	3.2
20	LT	CE		25	45	10	38.9	38.9	3.3
21	RT	PE		16	36	8	23.1	23.1	1.9
22	LT		28TH ST	18	38	10	31.1	31.1	2.6
23	RT	PE		16	36	8	23.1	23.1	1.9
24	LT	CE		25	45	10	38.9	38.9	3.3
25	RT	PE		16	36	8	23.1	23.1	1.9
26	LT	CE		25	45	10	38.9	38.9	3.3
27	RT	PE		16	36	8	23.1	23.1	1.9
28	LT	CE		25	45	10	38.9	38.9	3.3
29	LT		29TH ST	18	38	15	46.7	46.7	3.9
30	RT	PE		16	32	8	21.3	21.3	1.8
31	LT	CE		25	45	10	38.9	38.9	3.3
32	RT	CE		25	45	10	38.9	38.9	3.3
33	LT	CE		25	45	10	38.9	38.9	3.3
34	RT	CE		25	45	10	38.9	38.9	3.3
35	LT		30TH ST	18	38	30	93.3	93.3	7.8
Total							1738.8	1738.8	146.1
USE							1739	1739	146



TYPICAL SECTION
 STA. 48+82 TO 51+53.22
 STA. 54+15.85 TO 66+58



TYPICAL SECTION
 STA. 51+53.22 TO 54+15.85



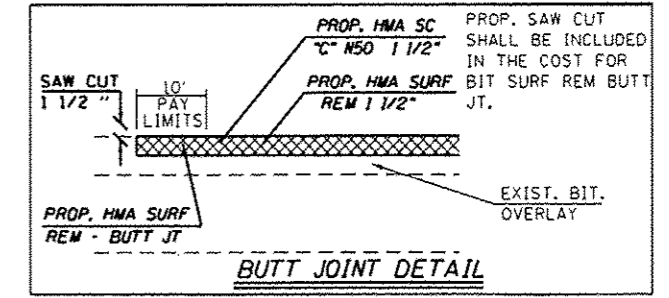
TYPICAL SECTION
 STA. 94+59 TO 98+75

EXISTING LEGEND

- ① EXISTING 7/8" SMOOTH BAR
- ② EXISTING P.C.C. PAVEMENT, 9"-6"-9" WITH 2" BITUMINOUS SURFACE
- ③ EXISTING 1/2" DEFORMED BAR
- ④ EXISTING METAL JOINT
- ⑤ EXISTING LEVEL BINDER 1/4"
- ⑥ EXISTING BITUMINOUS CONCRETE BASE COURSE WIDENING 9"
- ⑦ EXISTING BITUMINOUS CONCRETE SURFACE COURSE 1 1/2"
- ⑧ EXISTING CURB & CUTTER

PROPOSED LEGEND

- ⑩ PROPOSED HOT-MIX ASPHALT SURFACE REMOVAL, 1 1/2" AND VARIES
- ⑪ PROPOSED HOT-MIX ASPHALT SURFACE COURSE, MIX D, N50, 1 1/2"
- ⑫ PROPOSED PAVEMENT MARKING LINE - 5"
- ⑬ PROPOSED 1.5" AGGREGATE WEDGE SHOULDER



BUTT JOINT DETAIL

BUTT JOINT LOCATIONS:
 SEE SCHEDULE OF QUANTITIES

FILE NAME :	USER NAME : sparkge	DESIGNED -	REVISED -	STATE OF ILLINOIS DEPARTMENT OF TRANSPORTATION	TYPICAL SECTIONS - RIDGE AVE		F.A.U. RTE.	SECTION	COUNTY	TOTAL SHEETS	SHEET NO.
c:\p-work\pvidot\sparkge\08396880\0672126-shr-typicel.dgn	DRAWN -	REVISED -	7972				(1) RS-5	SANGAMON	10	5	
Default	PLOT SCALE = 100:0000 1/2" = 1"	CHECKED -	REVISED -				CONTRACT NO. 72H26				
	PLOT DATE = Aug-15-2014 10:21:05AM	DATE -	REVISED -				ILLINOIS FED. AID PROJECT				
				SCALE: SHEET 5 OF 10 SHEETS		STA. TO STA.					

APPROX EX RR ROW

3 CE

6 CE



TYPICAL PAVEMENT MARKING LEGEND
 ② THERMOPLASTIC PM LETTERS AND SYMBOLS
 ④ THERMOPLASTIC PM LINE 24", STOP BAR (WHITE)

BEGIN PROJECT
 BUTT-JOINT
 STA 48+82

2 CE

4 CE

5 CE

7 CE

10 PE

12 CE

13 CE

15 CE

16 CE

17 PE



FILE NAME :	USER NAME : sparkag	DESIGNED - DA	REVISED -
C:\p\work\sp\dot\sparkag\40390000\06	2476_sht_plan.dwg	DRAWN - DA	REVISED -
	PLBT SCALE = 40.0000 / in.	CHECKED -	REVISED -
Default	PLBT DATE = Aug-15-2014 10:21:07AM	DATE = 5-13-2014	REVISED -

STATE OF ILLINOIS
 DEPARTMENT OF TRANSPORTATION

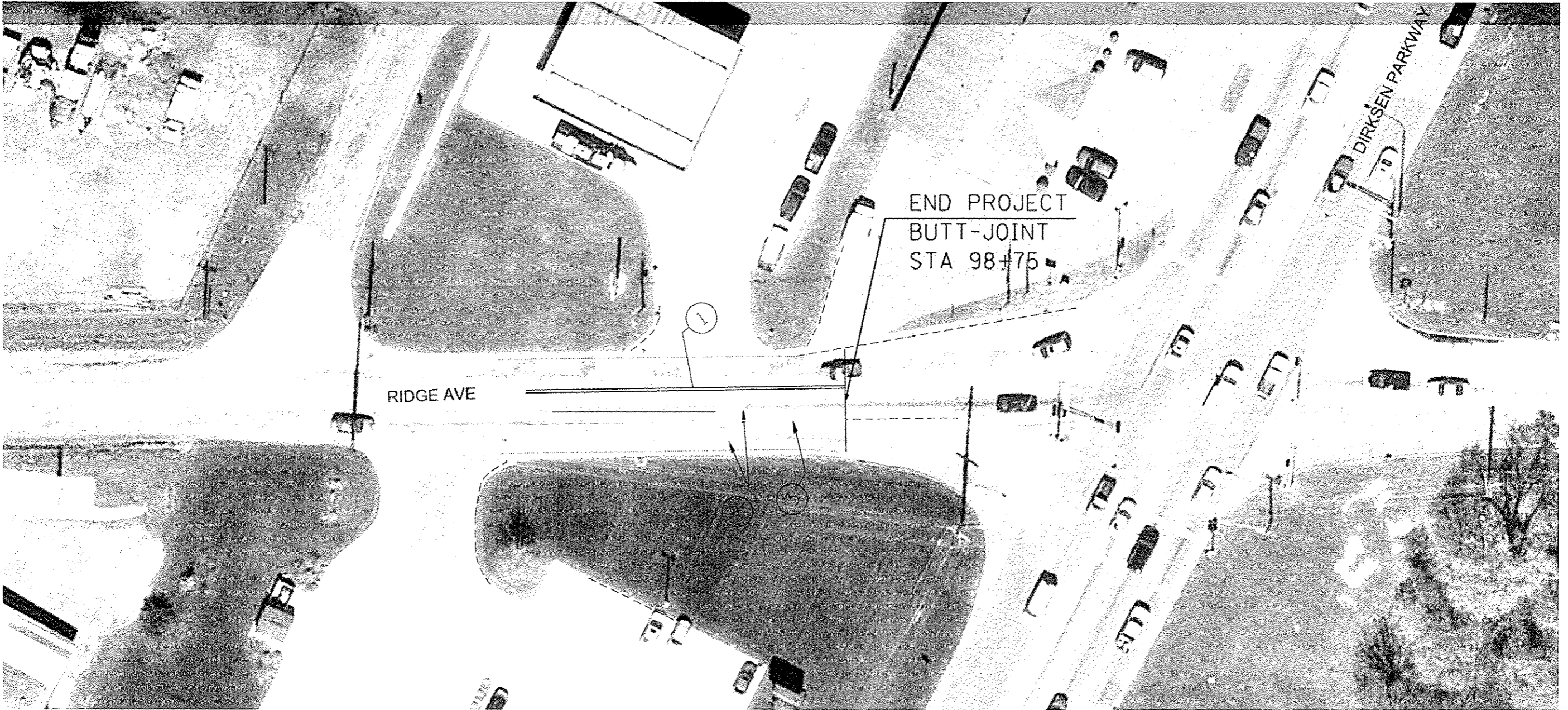
PLAN LINE DIAGRAM

SCALE: 20 SHEET 6 OF 10 SHEETS STA. TO STA.

F.A.U. RTE.	SECTION	COUNTY	TOTAL SHEETS	SHEET NO.
7972	(11) RS-5	SANGAMON	10	6
CONTRACT NO. 72H26			ILLINOIS FED. AID PROJECT	

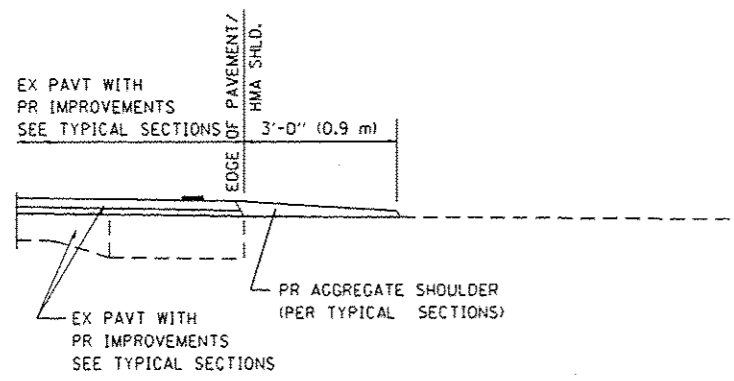
TYPICAL PAVEMENT MARKING LEGEND

- ① THERMOPLASTIC PM. LINE 5"
- ② THERMOPLASTIC PM LETTERS AND SYMBOLS
- ③ THERMOPLASTIC PM LINE 6" (WHITE)
- ④ THERMOPLASTIC PM LINE 24", STOP BAR (WHITE)

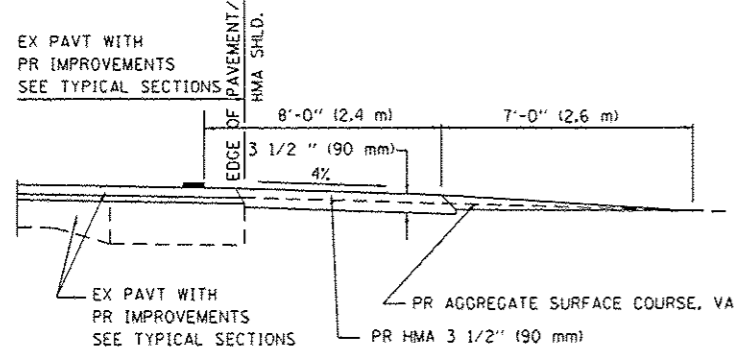


SEE ENTRANCE DETAIL AND SCHEDULES FOR ADDITIONAL INFORMATION

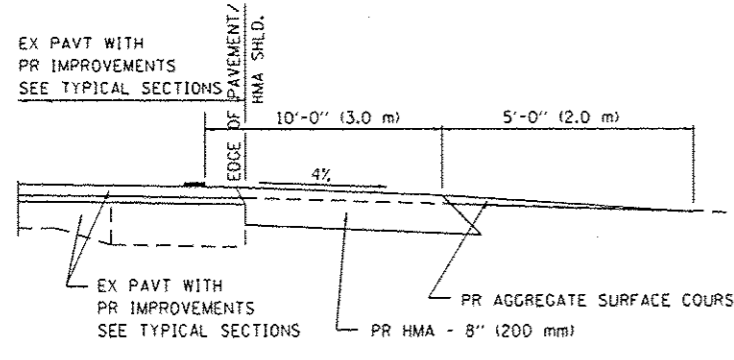
FILE NAME c:\p\work\pav04\spk\key-02390000.dwg	USER NAME spk	DESIGNED DA	REVISION DA	STATE OF ILLINOIS DEPARTMENT OF TRANSPORTATION	PLAN LINE DIAGRAM	F.A.D. RTE. 7972	SECTION RIS RS 5	COUNTY SANGAMON	TOTAL SHEETS 10	SHEET NO. 8	CONTRACT NO. 72H26
PROJECT SCALE 1" = 40.0000'	DATE 5/13/2014	CHECKED DA	REVISION DA	SCALE: 20	SHEET 8 OF 10 SHEETS	STA. TO STA.	DESIGNED FOR PROJECT				



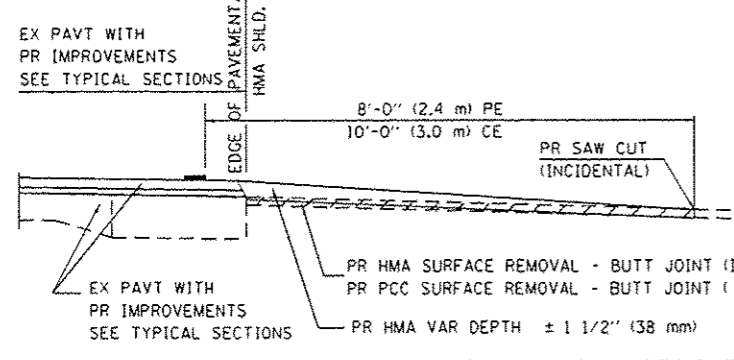
SECTION A-A FOR EX EARTH/ AGGREGATE FE



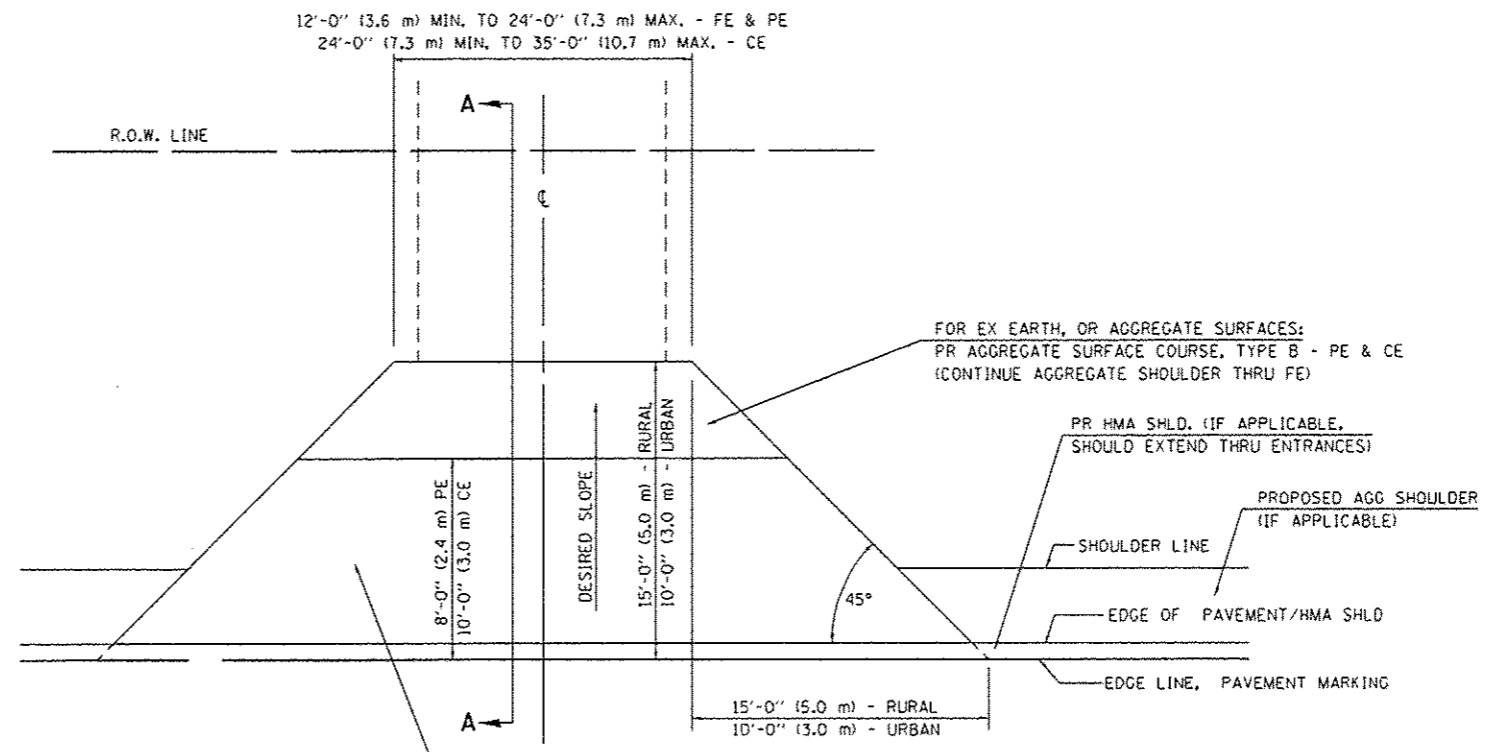
SECTION A-A FOR EX EARTH/AGGREGATE PE



SECTION A-A FOR EX EARTH/AGGREGATE CE & SIDE ROAD



SECTION A-A FOR EX HMA/ PC CONCRETE PE, CE & SIDE ROAD



FOR EX EARTH OR AGGREGATE SURFACES:
 PR HMA SURFACE REMOVAL (IF APPLICABLE)
 PR AGGREGATE SHOULDER THRU - FE
 PR HMA CONCRETE 3 1/2" (90 mm) - PE
 PR HMA CONCRETE 8" (200 mm) - CE

FOR EX HMA CONCRETE SURFACES:
 PR HMA SURFACE REMOVAL-BUTT JOINT

FOR EX PCC SURFACES:
 PR PCC SURFACE REMOVAL-BUTT JOINT

GENERAL NOTES:

THE RESIDENT ENGINEER WILL DETERMINE THE EXACT TYPE OF IMPROVEMENT TO BE COMPLETED FOR ALL ENTRANCES, SIDEROADS AND MAILBOX TURNOUTS ON THIS PROJECT.

THE PLAN DETAILS AND SCHEDULES SHOULD BE USED AS A GUIDE FOR THE ENGINEER TO IMPLEMENT THE FINAL DESIGN. THE ENGINEER MAY DECIDE TO SALVAGE PORTIONS OF THE EXISTING ENTRANCE PAVEMENT STRUCTURE; THEREFORE, REDUCING PAY ITEM QUANTITIES, NO ADDITIONAL PAYMENT WILL BE ALLOWED FOR THIS REDUCTION IN QUANTITIES.

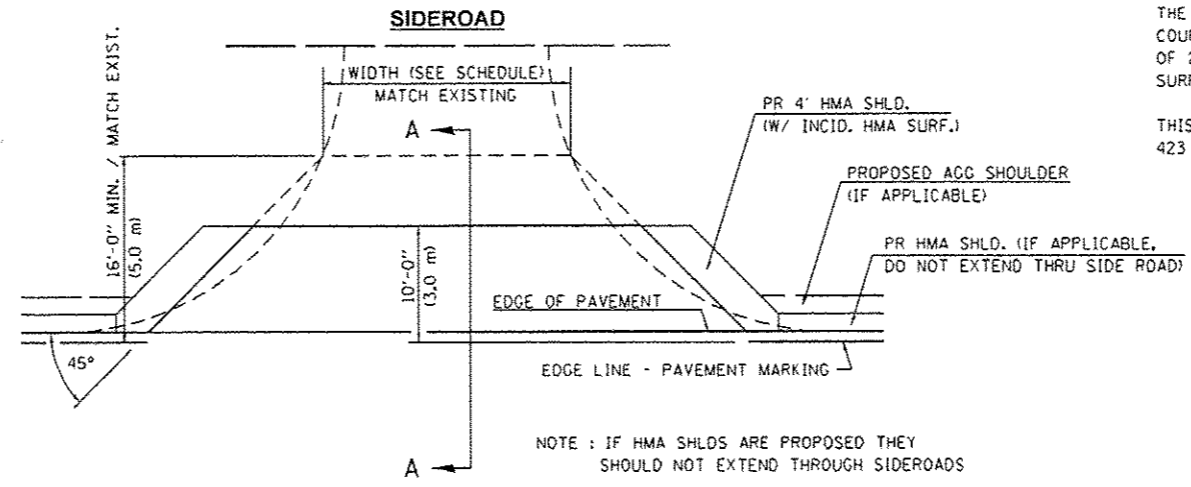
ANY WORK THE ENGINEER REQUIRES WHICH IS NOT COVERED BY A PAY ITEM CONTAINED IN THE PLANS WILL BE PAID FOR IN ACCORDANCE WITH ARTICLE 109.04 OF THE STANDARD SPECIFICATIONS.

HMA CONCRETE REQUIRED TO CONSTRUCT THE ENTRANCES SHALL BE IN ACCORDANCE WITH THE APPLICABLE PORTIONS OF SECTION 406 AND 408 OF THE STANDARD SPECIFICATIONS AND AS DIRECTED BY THE ENGINEER.

WHEN THE HMA CONCRETE PROPOSED FOR THE IMPROVEMENT IS THICKER THAN 3 INCHES (75 mm) AND REQUIRE PLACEMENT IN MORE THAN ONE LIFT, THE BOTTOM LIFT(S) SHALL MEET THE REQUIREMENTS OF HMA BASE COURSE IN SECTION 406 OF THE STANDARD SPECIFICATIONS AND THE TOP LIFT OF 2 INCHES (50 mm) SHALL MEET THE REQUIREMENTS OF HMA CONCRETE SURFACE COURSE, SUPERPAVE.

THIS WORK WILL BE PAID FOR IN ACCORDANCE WITH SECTIONS 351, 358, 408, 423 AND 440 OF THE STANDARD SPECIFICATIONS.

ALL DIMENSIONS ARE IN INCHES (MILLIMETERS) UNLESS OTHERWISE SHOWN.



NOTE: IF HMA SHLDS ARE PROPOSED THEY SHOULD NOT EXTEND THROUGH SIDEROADS

FILE NAME =	USER NAME = sparkgr	DESIGNED -	REVISED - 2/19/03 JCN
c:\p\work\p\sdot\sparkgr\d0398606\0672426-shd-details.dgn		DRAWN - CADD	REVISED - 4/01/04 JCN
ENT PPP.DGN	PLOT SCALE = 40.0000 1" = 40'	CHECKED - JCN	REVISED -
	PLOT DATE = Aug-15-2014 10:21:34AM	DATE - FEBRUARY 23, 1999	REVISED -

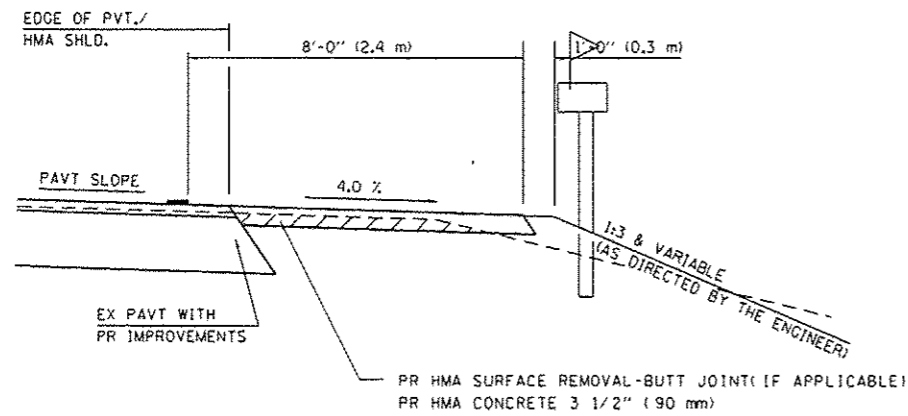
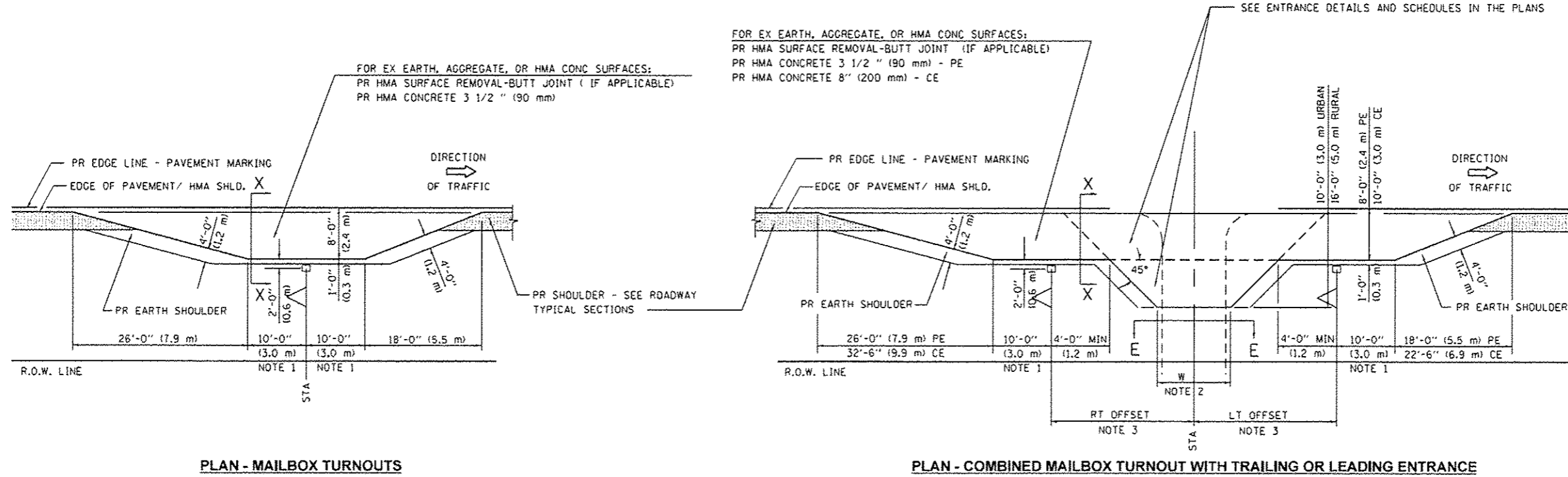
STATE OF ILLINOIS
 DEPARTMENT OF TRANSPORTATION

DIST.6 DETAILS FOR RURAL/URBAN ENT., MAILBOX
 TURNOUT & SIDEROADS W/O CONC. GUTTER (3P-PROJ.)

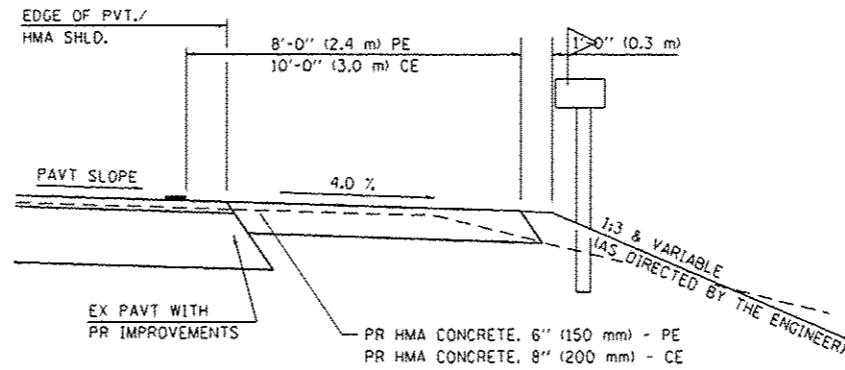
SCALE: SHEET 91 OF 103 SHEETS STA. TO STA.

F.A.U. RTE.	SECTION	COUNTY	TOTAL SHEETS	SHEET NO.
7972	(1) RS-5	SANGAMON	10	9
CONTRACT NO. 72H26			ILLINOIS FED. AID PROJECT	

DETAILS OF MAILBOX TURNOUTS



(DETAIL APPLIES WHEN M.B. TURNOUT DOES NOT EXIST.
 IF EXISTING, TREAT SAME AS ENTRANCE.)



(DETAIL APPLIES WHEN M.B. TURNOUT DOES NOT EXIST.
 IF EXISTING, TREAT SAME AS ENTRANCE.)

- NOTE 1 IF MORE THAN ONE MAILBOX IS PRESENT, DIMENSION FROM CENTER OF END MAILBOX.
- NOTE 2 FOR ENTRANCE LAYOUT DIMENSIONS AND SECTIONS A-A & E-E REFER TO THE SCHEDULES IN THE PLANS.
- NOTE 3 BOTH LT OR RT OFFSETS FOR MAILBOX SHOWN USE OFFSET DIMENSION PER SCHEDULE AND REFER TO LAYOUT SHOWN ON THE PLAN.

ALL DIMENSIONS ARE IN INCHES (MILLIMETERS)
 UNLESS OTHERWISE SHOWN.

755 19 508

FILE NAME : ent_ppp.dgn	USER NAME : sparkgn 2426-sht-details.dgn	DESIGNED - DRAWN - CADD	REVISIONS - 2/19/03 JCN 4/01/04 JCN	STATE OF ILLINOIS DEPARTMENT OF TRANSPORTATION	DIST. 6 DETAILS FOR RURAL/URBAN ENT., MAILBOX TURNOUT & SIDEROADS W/O CONC. GUTTER (3P-PROJ.)	F.A.U. RTE. 7972	SECTION (1) RS-5	COUNTY SANGAMON	TOTAL SHEETS 10	SHEET NO. 10
PLOT SCALE = 40.0000 / in. PLOT DATE = Aug-15-2014 10:21:34AM				SCALE: SHEET 10 OF 10 SHEETS STA. TO STA.		CONTRACT NO. 72H26 ILLINOIS FED. AID PROJECT *** DB SPRING RD REPAIR 2014-25				