

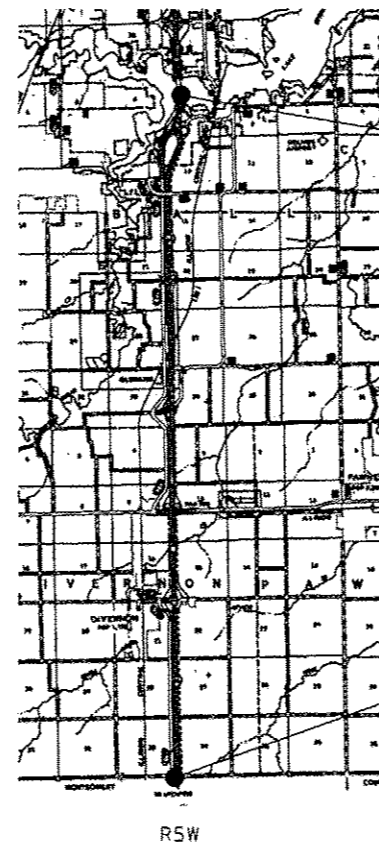
STATE OF ILLINOIS
DEPARTMENT OF TRANSPORTATION
DIVISION OF HIGHWAYS

**PROPOSED
HIGHWAY PLANS**

FAI ROUTE 55 (I-55)
D6 PAVT PRESERVATION 2015

CENTERLINE MICRO-SURFACING
SANGAMON COUNTY

C-96-055-15



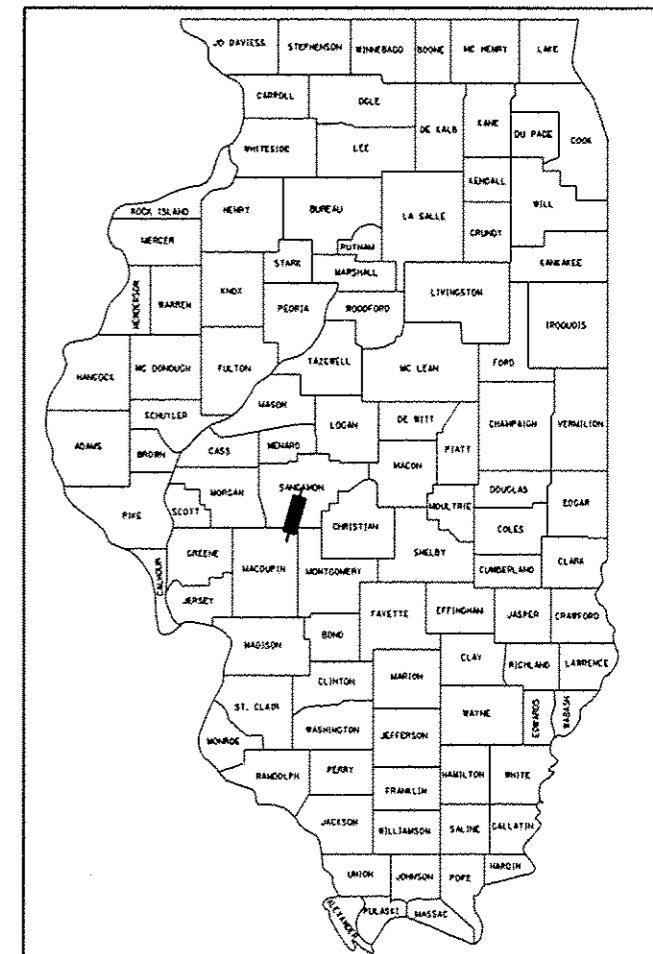
BEGIN PROJECT
STA 285+00.00

END PROJECT
SANGAMON/MONTGOMERY
COUNTY LINE
STA 755+62.82

| F.A.I. RTE. | SECTION | COUNTY | TOTAL SHEETS | SHEET NO. |
|-------------|---------|----------|--------------|-----------|
| 55 | * | SANGAMON | 6 | 1 |
| | | ILLINOIS | CONTRACT NO. | |

*D6 PAVT PRESERVATION 2015

D-96-055-15

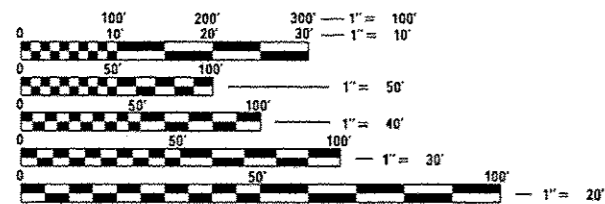


LOCATION OF SECTION INDICATED THUS: — [thick black line] —

HIGHWAY CLASSIFICATION

F. A. I. ROUTE 55 (I-55)

ADT: 22,300
SU= 500
MU= 3400



FULL SIZE PLANS HAVE BEEN PREPARED USING STANDARD ENGINEERING SCALES. REDUCED SIZED PLANS WILL NOT CONFORM TO STANDARD SCALES. IN MAKING MEASUREMENTS ON REDUCED PLANS, THE ABOVE SCALES MAY BE USED.

J.U.L.I.E.
JOINT UTILITY LOCATION INFORMATION FOR EXCAVATION
1-800-892-0123
OR 811

PROJECT ENGINEER: MIKE IRWIN 217.524.7765
PROJECT MANAGER

CONTRACT NO. 72H78

GROSS LENGTH = 39178 FT. = 7.42 MILE
NET LENGTH = 39178 FT. = 7.42 MILE

STATE OF ILLINOIS
DEPARTMENT OF TRANSPORTATION
DIVISION OF HIGHWAYS

SUBMITTED April 3 2015
Roger L. Dinkelmann
DEPUTY DIRECTOR OF HIGHWAYS, REGION ENGINEER

May 8 2015
John D. Baranzelli, P.E.
ENGINEER OF DESIGN AND ENVIRONMENT

May 8 2015
Omer Osman, P.E.
DIRECTOR OF HIGHWAYS, CHIEF ENGINEER

PRINTED BY THE AUTHORITY
OF THE STATE OF ILLINOIS

**STATE OF ILLINOIS
DEPARTMENT OF TRANSPORTATION
DIVISION OF HIGHWAYS
DISTRICT 6**

INDEX OF SHEETS

- 1 COVER SHEET
- 2 GENERAL NOTES
- 3 SUMMARY OF QUANTITIES
- 4 TYPICAL SECTION
- 5 SCHEDULE OF QUANTITIES
- 6 DETAILS

EXAMINED April 3rd 20 15

[Signature]
ENGINEER OF OPERATIONS

EXAMINED April 3 20 15

[Signature]
ENGINEER OF PROJECT IMPLEMENTATION

EXAMINED April 3 20 15

[Signature]
ENGINEER OF PROGRAM DEVELOPMENT

STANDARDS

- 000001-06 STANDARD SYMBOLS, ABBREVIATIONS AND PATTERNS
- 001006 DECIMAL OF AN INCH AND OF A FOOT
- 701101-04 OFF-ROAD OPERATIONS MULTILANE, 15' TO 24' FROM PAVEMENT EDGE
- 701106-02 OFF-ROAD OPERATIONS, MULTILANE, MORE THAN 15' AWAY
- 701400-08 APPROACH TO LANE CLOSURE, FREEWAY/EXPRESSWAY
- 701401-09 LANE CLOSURE, FREEWAY/EXPRESSWAY
- 701406-09 LANE CLOSURE, FREEWAY/EXPRESSWAY, DAY OPERATIONS ONLY
- 701411-09 LANE CLOSURE, MULTILANE AT ENTRANCE OR EXIT RAMP, FOR SPEEDS > 45 MPH
- 701446-06 TWO LANE CLOSURE, FREEWAY/EXPRESSWAY
- 701901-04 TRAFFIC CONTROL DEVICES

GENERAL NOTES

THE ENGINEER WILL BE THE SOLE JUDGE CONCERNING CURING TIME FOR THE MICROSURFACING AND WHEN THE ROADWAY WILL BE OPENED TO TRAFFIC.

ANY REFERENCE TO A STANDARD IN THESE PLANS SHALL BE INTERPRETED TO MEAN THE EDITION AS INDICATED BY THE SUBNUMBER SHOWN IN THE LIST OF STANDARDS OR THE COPY INCLUDED IN THESE PLANS

THE FOLLOWING RATES OF APPLICATION HAVE BEEN USED IN CALCULATING PLAN QUANTITIES:

| | | |
|------------------------------|--------|--------------------------|
| SHORT TERM PAVEMENT MARKINGS | 10 | FT /100FT OF APPLICATION |
| MIX FOR CRACKS, JTS & FLGWYS | 0.0003 | TONS/SQ YD |
| MICROSURFACING, SINGLE PASS | 20 | POUNDS / SQ YD |

ONLY THE PASSING IS TO BE CLOSED FOR THE CENTERLINE WORK.

THE TEMPORARY PAVEMENT MARKING SHALL BE PLACED 3' OFF CENTERLINE IN DRIVING LANE PRIOR TO REMOVING EXISTING LINE.

THE CONTRACTOR SHALL CONTACT JULIE AT LEAST 48 HOURS PRIOR TO EXCAVATING TO DETERMINE WHICH UTILITIES ARE IN THE AREA.

• D6 PAVT PRESERVATION 2015

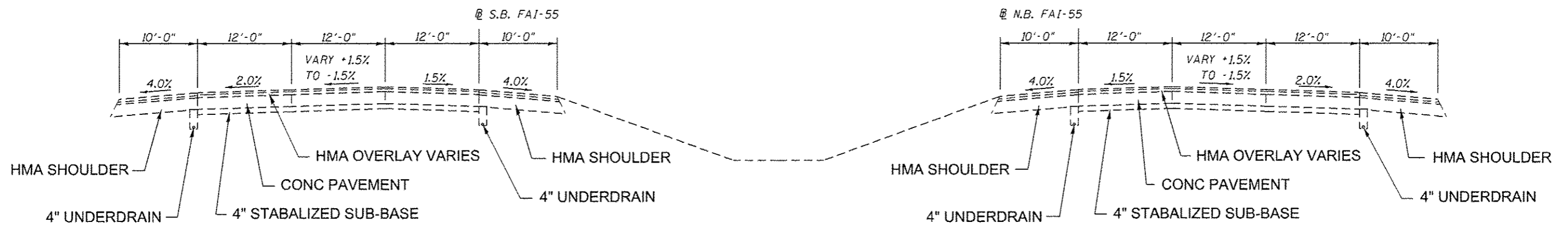
| | | | | | | | | | | | |
|---|--|------------|-----------|---|---------------------------------|-------------------------------------|---------|--------------------|--------------|-----------|--|
| FILE NAME * | USER NAME * brachanna | DESIGNED - | REVISED - | STATE OF ILLINOIS DEPARTMENT OF TRANSPORTATION | GENERAL NOTES, STANDARDS | F.A.I. RTE. | SECTION | COUNTY | TOTAL SHEETS | SHEET NO. | |
| S:\CONTRACT\MINT_CAD\72H78-FAI 55 (1 55) - 06 | PAYT PRES 2015-SANG\PLANS\ALL SHEETS.dgn | DRAWN - | REVISED - | | | 55 | * | SANGAMON | 6 | 2 | |
| Default | PLT SCALE = 100.0000 "/ in. | CHECKED - | REVISED - | | | SCALE: SHEET OF SHEETS STA. TO STA. | | CONTRACT NO. 72H78 | | | |
| | PLT DATE = Apr-03-2015 10:48:04AM | DATE - | REVISED - | | | [ILLINOIS] FED. AID PROJECT | | | | | |

| CODE NO. | ITEM | UNIT | TOTAL QUANTITY | CONSTR. CODE | |
|----------|---|--------|----------------|--------------|--|
| | | | | 100% STATE | |
| | | | | ROADWAY | |
| | | | | 0005 | |
| | | | | RURAL | |
| 40600275 | BITUMINOUS MATERIALS (PRIME COAT) | POUNDS | 14951 | 14951 | |
| 40600400 | MIXTURE FOR CRACKS, JOINTS, AND FLANGEWAYS | TON | 9.8 | 9.8 | |
| 67100100 | MOBILIZATION | L SUM | 1 | 1 | |
| 70100800 | TRAFFIC CONTROL AND PROTECTION, STANDARD 701401 | L SUM | 1 | 1 | |
| 70100420 | TRAFFIC CONTROL AND PROTECTION, STANDARD 701411 | EACH | 16 | 16 | |
| 70100700 | TRAFFIC CONTROL AND PROTECTION, STANDARD 701406 | L SUM | 1 | 1 | |
| 70100815 | TRAFFIC CONTROL AND PROTECTION, STANDARD 701446 | L SUM | 1 | 1 | |
| 70106800 | CHANGEABLE MESSAGE SIGN | CAL MO | 2 | 2 | |
| 70300520 | PAVEMENT MARKING TAPE, TYPE III, 4" | FOOT | 9247 | 9247 | |
| 70301000 | WORK ZONE PAVEMENT MARKING REMOVAL | SO FT | 27740 | 27740 | |
| 78008320 | POLYUREA PAVEMENT MARKING, TYPE II, LINE 5" | FOOT | 9247 | 9247 | |
| 78100100 | RAISED REFLECTIVE PAVEMENT MARKER | EACH | 2318 | 2318 | |
| 78300100 | PAVEMENT MARKING REMOVAL | SQ FT | 27740 | 27740 | |
| 78300200 | RAISED REFLECTIVE PAVEMENT MARKER REMOVAL | EACH | 2318 | 2318 | |
| X0326218 | FIBER-MODIFIED ASPHALT CRACK SEALING | FOOT | 92467 | 92467 | |

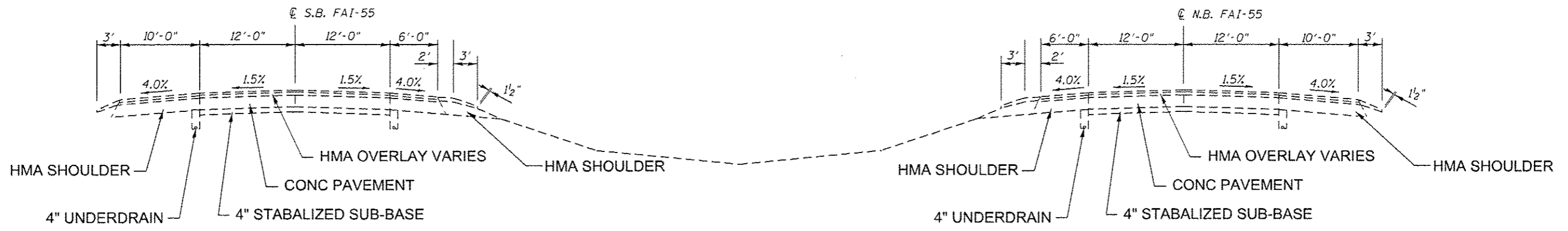
| CODE NO. | ITEM | UNIT | TOTAL QUANTITY | CONSTR. CODE | |
|----------|--|--------|----------------|--------------|--|
| | | | | 100% STATE | |
| | | | | ROADWAY | |
| | | | | 0005 | |
| | | | | RURAL | |
| X7010410 | SPEED DISPLAY TRAILER | CAL MO | 2 | 2 | |
| Z0063804 | MICRO-SURFACING, SINGLE PASS, TYPE II, MIXTURE D | SO YD | 33223 | 33223 | |

* SPECIALTY ITEM

* D6 PAVT PRESERVATION 2015



TYPICAL SECTION F.A.I. 55



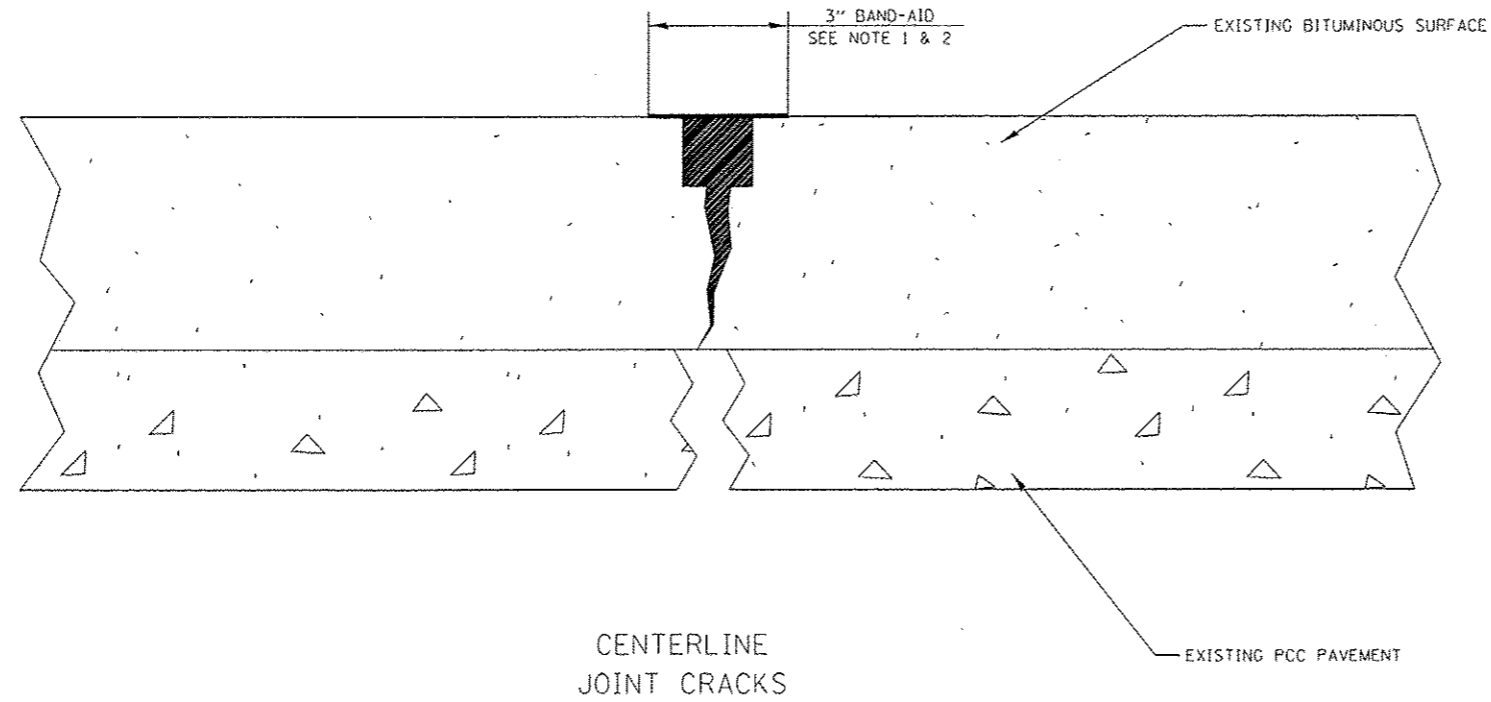
TYPICAL SECTION F.A.I. 55

D6 PAVT PRESERVATION 2015

| | | | | | | | | | | | | | |
|---|--|------------|-----------|---|----------------------------------|-------|----|--------|-------------|---------|----------|---------------------------|-----------|
| FILE NAME * | USER NAME * bronhamis | DESIGNED - | REVISED - | STATE OF ILLINOIS DEPARTMENT OF TRANSPORTATION | EXISTING TYPICAL SECTIONS | | | | F.A.I. RTE. | SECTION | COUNTY | TOTAL SHEETS | SHEET NO. |
| S:\CONTRMINT\CA0172H78-FAI 55 II 551 - 05 | PAVT PRES 2015-SAND\PLANS\ALL SHEETS.dgn | DRAWN - | REVISED - | | | | | | 55 | * | SANGAMON | 6 | 4 |
| Default | PLOT SCALE = 100.0000' / 1" | CHECKED - | REVISED - | | SCALE: | SHEET | OF | SHEETS | STA. | TO | STA. | ILLINOIS FED. AID PROJECT | |
| | PLOT DATE = Apr-03-2015 02:01:49PM | DATE - | REVISED - | | CONTRACT NO. 72H78 | | | | | | | | |

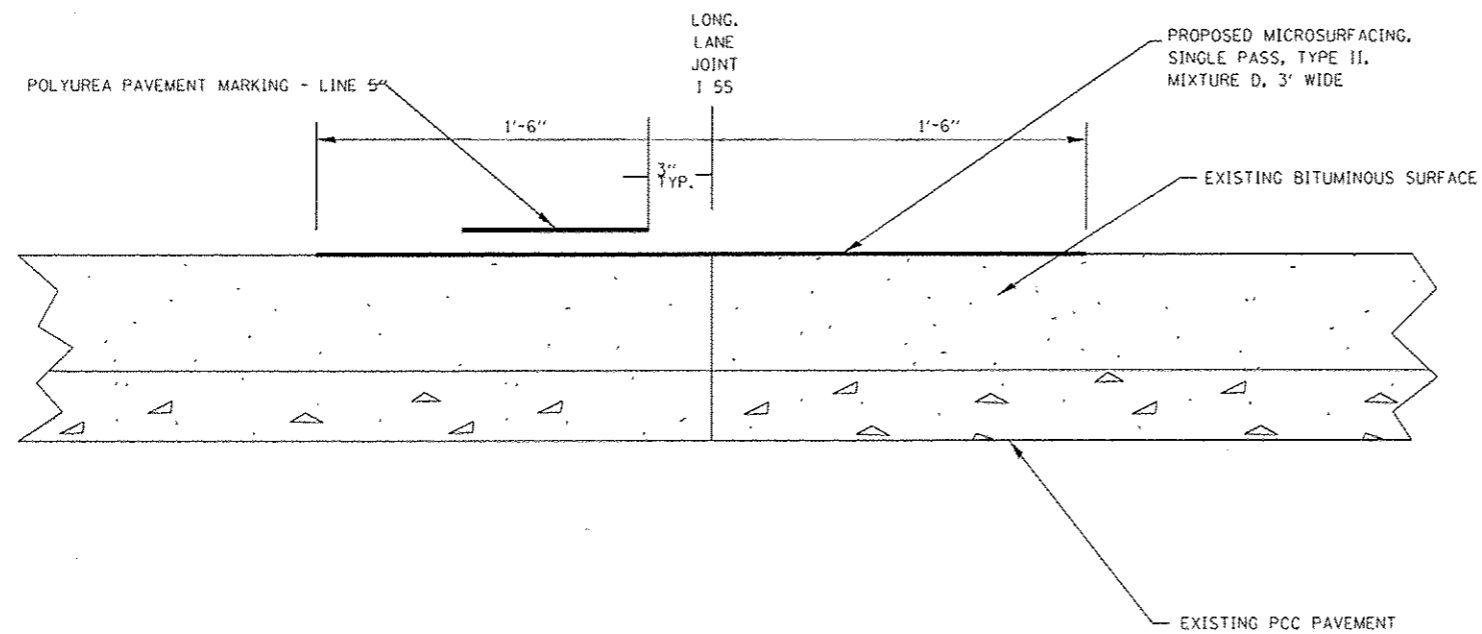
| MAINLINE | | | | | | | | | | | | |
|-----------------------|-----------|-----------------------------------|------------------------------------|--------------------------|---------------------------------------|-----------------------------------|---|--------------------------------------|---|-----------------------------------|-------------------------------------|-----|
| LOCATION STA. TO STA. | LENGTH | PAVEMENT MARKING TAPE TYPE III 4" | WORK ZONE PAVEMENT MARKING REMOVAL | PAVEMENT MARKING REMOVAL | POLYUREA PAVEMENT MARKING TYPE II, 5" | RAISED REFLECTIVE PAVEMENT MARKER | RAISED REFLECTIVE PAVEMENT MARKER REMOVAL | FIBER-MODIFIED ASPHALT CRACK SEALING | MICRO-SURFACING SINGLE PASS TYPE II MIXTURE D | BITUMINOUS MATERIALS (PRIME COAT) | MIX FOR CRACKS, JOINTS & FLANGEWAYS | |
| | FT | FT | SO FT | SO FT | FT | EACH | EACH | FT | SO YD | POUNDS | TON | |
| NORTHBOUND | | | | | | | | | | | | |
| 285+00.00 | 366+00.68 | 8100.68 | | 2430 | 2430 | 810 | 204 | 204 | 8100 | 2700 | 1215 | .8 |
| 366+00.68 | 369+37.72 | BRIDGE OMISSION | | | | | | | | | | |
| 369+37.72 | 514+51.60 | 14513.88 | 1451 | 4354 | 4354 | 1451 | 364 | 364 | 14513 | 4838 | 2177 | 1.4 |
| 514+51.60 | 517+28.60 | BRIDGE OMISSION | | | | | | | | | | |
| 517+28.60 | 549+76.71 | 3248.11 | 325 | 974 | 974 | 325 | 82 | 82 | 3248 | 1083 | 488 | .3 |
| 549+76.71 | 552+36.38 | BRIDGE OMISSION | | | | | | | | | | |
| 552+36.38 | 755+62.82 | 20326.44 | 2033 | 6098 | 6098 | 2033 | 508 | 508 | 20326 | 6775 | 3049 | 2.0 |
| NORTHBOUND | | | | | | | | | | | | |
| 285+00.00 | 367+29.80 | 8229.80 | 823 | 2469 | 2469 | 823 | 206 | 206 | 8229 | 2743 | 1234 | .8 |
| 367+29.80 | 370+72.90 | BRIDGE OMISSION | | | | | | | | | | |
| 370+72.90 | 514+51.60 | 14378.70 | 1438 | 4313 | 4313 | 1438 | 360 | 360 | 14378 | 4793 | 2157 | 1.4 |
| 514+51.60 | 517+28.60 | BRIDGE OMISSION | | | | | | | | | | |
| 517+28.60 | 550+70.32 | 3341.72 | 334 | 1002 | 1002 | 334 | 84 | 84 | 3341 | 1114 | 501 | .3 |
| 550+70.32 | 552+29.99 | BRIDGE OMISSION | | | | | | | | | | |
| 552+29.99 | 755+62.82 | 20332.83 | 2033 | 6100 | 6100 | 2033 | 510 | 510 | 20332 | 6777 | 3050 | 2.0 |
| I-55 AND EXIT 88 | 1800.00 | | | | | | | | 1800 | 600 | 270 | .2 |
| I-55 AND EXIT 83 | 1800.00 | | | | | | | | 1800 | 600 | 270 | .2 |
| I-55 AND EXIT 82 | 1800.00 | | | | | | | | 1800 | 600 | 270 | .2 |
| I-55 AND EXIT 80 | 1800.00 | | | | | | | | 1800 | 600 | 270 | .2 |
| TOTAL | | | 9247 | 27740 | 27740 | 9247 | 2318 | 2318 | 99667 | 33223 | 14951 | 9.8 |

* D6 PAVT PRESERVATION 2015



CENTERLINE
JOINT CRACKS

(NOT DRAWN TO SCALE)



CENTERLINE SEAL COAT

(NOT DRAWN TO SCALE)

NOTES:

1. ROUT OR SAW TO $\frac{3}{4}$ " WIDE BY $\frac{3}{4}$ " DEEP (1:1 RATIO).
2. JOINTS SHALL BE CLEANED OF LOOSE AND UNSOUND MATERIAL AND SEALED SLIGHTLY OVERFILL WITH SEALANT. IMMEDIATELY SQUEEGEE IN A SEPARATE OPERATION TO PROVIDE A 3" WIDE "BAND-AID" EFFECT FLUSH WITH PAVEMENT SURFACE WITH EDGES FEATHERED OUT.
3. CRACK ROUTING AND FILLING SHALL CONFORM TO SECTION 451 OF THE STANDARD SPECIFICATIONS.
4. CRACK ROUTING AND SEALING SHALL BE ACCOMPLISHED PRIOR TO SEAL COATING.

| | | | | | | | | | | | | |
|---|------------------------------------|------------|-----------|---|---|-------|----|---------------------------|---------|----------|-----------------|--------------|
| FILE NAME * | USER NAME * branhame | DESIGNED - | REVISED - | STATE OF ILLINOIS DEPARTMENT OF TRANSPORTATION | LONG JOINT PROPOSED MICROSURFACING DETAILS | | | F.A.I. RTE. | SECTION | COUNTY | TOTAL SHEETS | SHEET NO. |
| S:\CONTRMAINT.CAD\72H78-FAI 55 (1 55) - D | PAVT PRES 2015-SANGVALL SHEETS.dgn | DRAWN - | REVISED - | | | | | 55 | . | SANGAMON | 6 | 6 |
| Default | PLOT SCALE * 100.0000 1/16" | CHECKED - | REVISED - | | CONTRACT NO. 72H78 | | | ILLINOIS FED. AID PROJECT | | | | |
| | PLOT DATE * 5/7/2015 | DATE - | REVISED - | | SCALE: | SHEET | OF | SHEETS | STA. | TO STA. | | |

* D6 PAVT PRESERVATION 2015