

STATE OF ILLINOIS
DEPARTMENT OF TRANSPORTATION
DIVISION OF HIGHWAYS

**PROPOSED
HIGHWAY PLANS**

VARIOUS ROUTES
SECTION D-8 ANNUAL PATCHING 2016-1

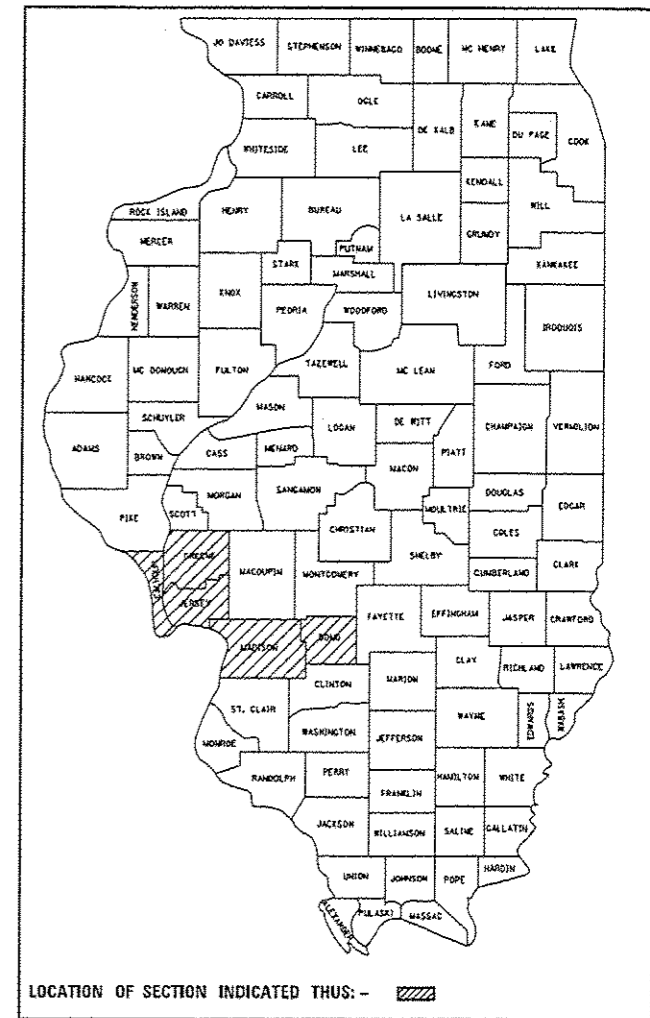
PATCHING
VARIOUS COUNTIES
(MADISON, BOND, JERSEY, CALHOUN & GREENE)

C-98-003-15

F.A. RTE.	SECTION	COUNTY	TOTAL SHEETS	SHEET NO.
**	-	ILLINOIS	VARIOUS	6
			CONTRACT NO.	76H50

D-8 ANNUAL PATCHING 2016-1
** VARIOUS

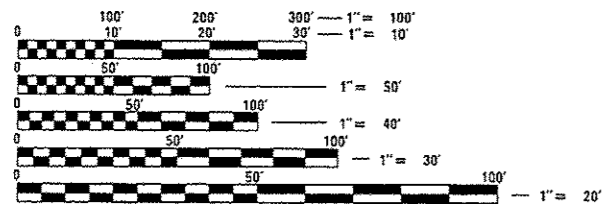
D-98-006-15



INDEX OF SHEETS

1. COVER SHEET
2. LOCATION MAP, I. D. O. T. CONTACT PERSONS
3. GENERAL NOTES, HIGHWAY STANDARDS, AND COMMITMENTS
- 4.-5. SUMMARY OF QUANTITIES
6. DETAILS

SEE PAGE 2
FOR LOCATION MAP



FULL SIZE PLANS HAVE BEEN PREPARED USING STANDARD ENGINEERING SCALES. REDUCED SIZED PLANS WILL NOT CONFORM TO STANDARD SCALES. IN MAKING MEASUREMENTS ON REDUCED PLANS, THE ABOVE SCALES MAY BE USED.

J.U.L.I.E.
JOINT UTILITY LOCATION INFORMATION FOR EXCAVATION
1-800-892-0123
OR 811

PROJECT ENGINEER: PATTI LEBEAU (618) 346-3179
PROJECT LEADER: CRAIG POETTKER (618) 346-3279
SQUAD CONTACT: KEVIN LEWIS (618) 960-7581
CONTRACT NO. 76H50

STATE OF ILLINOIS
DEPARTMENT OF TRANSPORTATION
DIVISION OF HIGHWAYS

SUBMITTED *March 23 20 15*

Jeffrey Z. Kamin
DEPUTY DIRECTOR OF HIGHWAYS, REGION ENGINEER

John D. Baranzello
ENGINEER OF DESIGN AND ENVIRONMENT

Chris Oeman
DIRECTOR OF HIGHWAYS, CHIEF ENGINEER

PRINTED BY THE AUTHORITY
OF THE STATE OF ILLINOIS

I.D.O.T. CONTACT PERSONS

CRAIG POETTKER, AREA FIELD ENGINEER:
GREENE, JERSEY, MADISON AND CALHOUN
COUNTIES

OFFICE PHONE (618) 346-3279

JOE MONROE, OPERATIONS ENGINEER:
BOND COUNTY

OFFICE PHONE (618) 346-3250

TODD DUNLAP, FIELD TECHNICIAN
JERSEY YARD (JERSEY) & CARROLLTON
(GREENE & CALHOUN)

OFFICE PHONE (618) 498-2723

JASON ROECKENHAUS, FIELD TECHNICIAN
GREENVILLE YARD (BOND)

OFFICE PHONE: (618) 664-0982

STEVE WHEELER, FIELD TECHNICIAN
TROY YARD (MADISON)

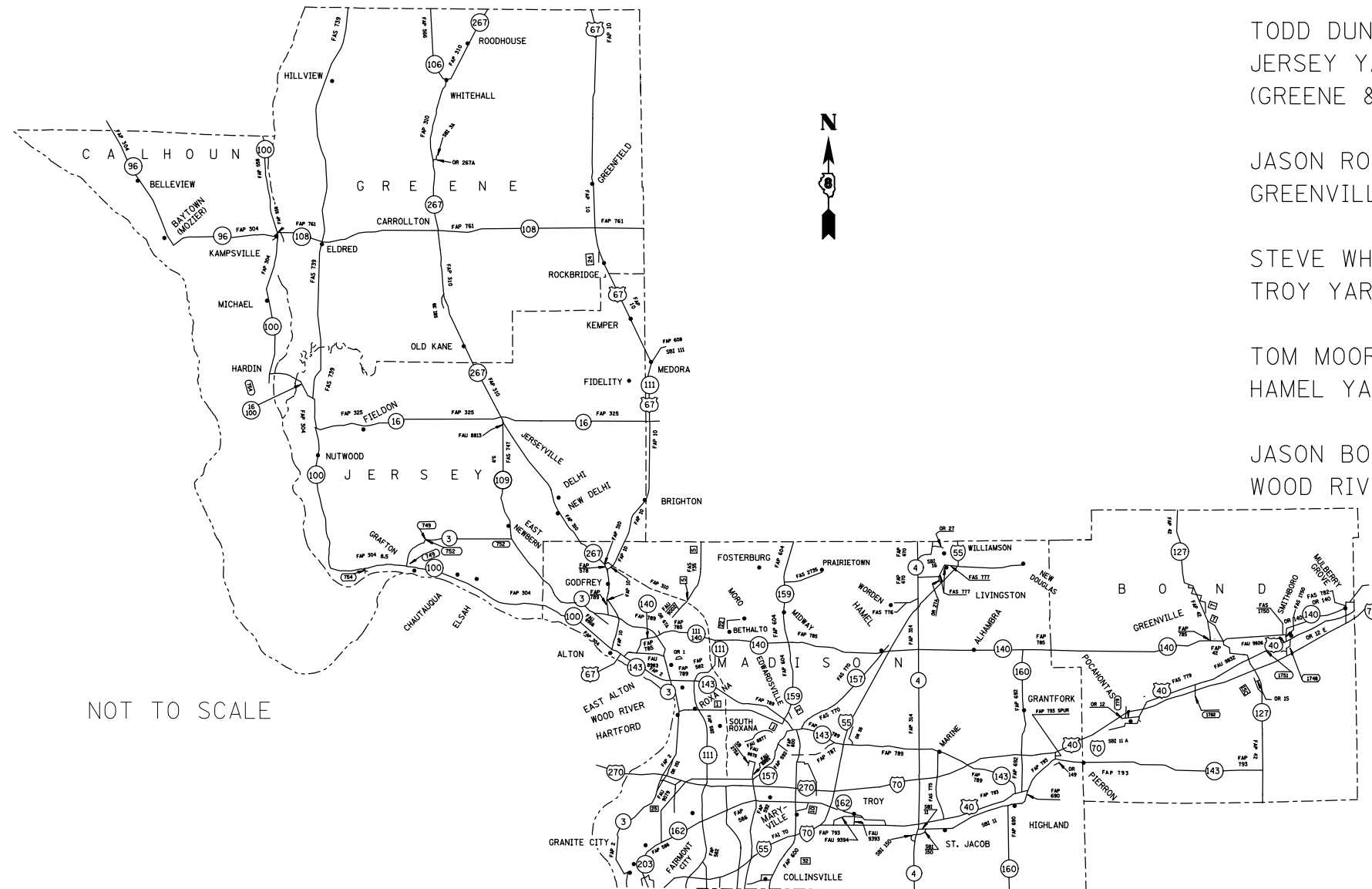
OFFICE PHONE: (618) 667-0720

TOM MOORE, FIELD TECHNICIAN
HAMEL YARD (MADISON)

OFFICE PHONE: (618) 663-2206

JASON BOLLMAN, FIELD TECHNICIAN
WOOD RIVER YARD (MADISON)

OFFICE PHONE: (618) 259-1440



NOT TO SCALE

•• VARIOUS
• D-8 ANNUAL PATCHING 2016-1

FILE NAME =	USER NAME = lewiska	DESIGNED -	REVISED -
ct:\pw\work\p\dot\lewiska\d0405436\d876150-sh1-plan.dgn		DRAWN -	REVISED -
	PLOT SCALE = 100.0000' / 1".	CHECKED -	REVISED -
	PLOT DATE = 3/23/2015	DATE -	REVISED -

**STATE OF ILLINOIS
DEPARTMENT OF TRANSPORTATION**

LOCATION MAP, I. D. O. T. CONTACT PERSONS

SCALE:	SHEET NO.	OF	SHEETS	STA.	TO STA.
--------	-----------	----	--------	------	---------

F.A. RTE.	SECTION	COUNTY	TOTAL SHEETS	SHEET NO.
••	•	VARIOUS	6	2
			CONTRACT NO. 76H50	
FED. ROAD DIST. NO. ILLINOIS FED. AID PROJECT				

GENERAL NOTES

1. A FLAGGER SHALL BE REQUIRED AT ALL TIMES WHEN WORKERS OR EQUIPMENT ARE ENCROACHING THE LANE OF TRAFFIC.
2. LONGITUDINAL DIMENSIONS MAY BE ADJUSTED TO FIT FIELD CONDITIONS. THE LATERAL PLACEMENT OF THE FLAGGER MAY BE VARIED FROM THAT SHOWN.
3. FORM BSE 725 IS REQUIRED.
4. NO OVERNIGHT LANE CLOSURES WILL BE ALLOWED ON TWO-LANE, TWO-WAY PAVEMENT.
5. ILLINOIS STATE LAW REQUIRES A 48-HOUR NOTICE TO BE GIVEN TO UTILITIES BEFORE DIGGING. FIELD MARKING OF FACILITIES MAY BE OBTAINED BY CONTACTING J.U.L.I.E. (PHONE: 1-800-892-0123, OR 811) OR FOR NON-MEMBERS, THE UTILITY COMPANY DIRECTLY.
6. THE FOLLOWING MIXTURE REQUIREMENTS ARE APPLICABLE FOR THIS PROJECT:

MIXTURE USE	PATCHING
AC/PG	PG 64-22
RAP % (MAX)	10%
DESIGN AIR VOIDS	4.0% @ Ndes=90
MIX COMPOSITION (GRADATION MIXTURE)	IL 19.0
FRICTION AGG	MIXTURE B

PLAN QUANTITIES FOR HMA ITEMS ARE CALCULATED USING A UNIT WEIGHT OF 112 LB/SQ YD/IN.

7. THE DEPARTMENT STRONGLY ENCOURAGES THE PRIME CONTRACTOR AND THEIR APPROVED SUB-CONTRACTORS TO HIRE MINORITY, WOMEN AND DISADVANTAGED INDIVIDUALS FROM ITS FEDERALLY FUNDED HIGHWAY CONSTRUCTION CAREERS TRAINING PROGRAM (HCCTP) TO HELP MEET WORKFORCE AND TRAINEE GOALS. THIS PROGRAM IS TRAINING MINORITIES, WOMEN AND DISADVANTAGED INDIVIDUALS IN HIGHWAY CONSTRUCTION-RELATED SKILLS, E.G., MATH FOR THE TRADES, JOB READINESS, TECHNICAL SKILLS COURSEWORK (CARPENTRY, CONCRETE FLATWORK, BLUEPRINT READING, SITE PLANS, SITE WORK, TOOLS USE, ETC.) AND OSHA 10 HOUR CERTIFICATION, TO PREPARE THEM FOR A CAREER IN THE HIGHWAY CONSTRUCTION TRADES. GRADUATES ARE WELL-TRAINED AND READY TO BECOME PRODUCTIVE ENTRY-LEVEL CONSTRUCTION WORKERS. CONTACT THE DISTRICT 8 EEO OFFICE AT 618-346-3360 AND/OR THE HCCTP COORDINATOR AT 618-874-6528 TO LEARN MORE ABOUT THE PROGRAM AND FOR ASSISTANCE IN MEETING WORKFORCE AND TRAINEE GOALS
8. THE RESIDENT ENGINEER SHALL VERIFY THE EXISTENCE OF HIGHWAY LIGHTING AND/OR I.T.S. UTILITIES WITHIN THE PROJECT LIMITS. IF HIGHWAY LIGHTING AND/OR I.T.S. EXISTS WITHIN THE PROJECT LIMITS, AND IF THESE ITEMS REQUIRE LOCATING, THE CONTRACTOR SHALL BE DIRECTED TO DO SO ACCORDING TO SECTION 803 OF THE STANDARD SPECIFICATIONS. THIS WORK SHALL BE PAID FOR ACCORDING TO ARTICLE 109.04 OF THE STANDARD SPECIFICATIONS.
9. ALL TURF AREAS DISTURBED BY THE CONTRACTOR SHALL BE SEEDED WITH THE APPROPRIATE EROSION CONTROL AS DIRECTED BY THE ENGINEER AT THE CONTRACTOR'S EXPENSE.

HIGHWAY STANDARDS

000001-06	701400-08
001001-02	701401-09
001006	701406-09
420001-08	701411-09
420101-05	701421-07
420106-05	701422-07
420601-05	701446-06
420701-02	701456-03
421001-02	701501-06
421101-09	701502-06
442001-04	701601-09
442101-07	701602-07
442201-03	701606-10
601001-04	701701-09
701201-04	701901-04
701206-03	
701336-06	

COMMITMENTS

NONE

** VARIOUS
* D-8 ANNUAL PATCHING 2016-1

FILE NAME =	USER NAME = jeviska	DESIGNED -	REVISED -	STATE OF ILLINOIS DEPARTMENT OF TRANSPORTATION	GENERAL NOTES, HIGHWAY STANDARDS, AND COMMITMENTS	F.A. RTE.	SECTION	COUNTY	TOTAL SHEETS	SHEET NO.
c:\p\work\p\d051\eviska\d0405436\d07650-ahtr-plan.dgn	DRAWN -	REVISED -	**			*	VARIOUS	6	3	
PLOT SCALE = 1/80,0000 1" = 100'	CHECKED -	REVISED -	CONTRACT NO. 76H50							
PLOT DATE = 3/23/2015	DATE -	REVISED -	SCALE:			SHEET NO.	OF SHEETS	STA.	TO STA.	FED. ROAD DIST. NO.

SUMMARY OF QUANTITIES

SUMMARY OF QUANTITIES			TOTAL QUANTITIES	CONSTRUCTION TYPE CODE		
CODE NO	ITEM	UNIT		100% STATE 0005		
44201294	CLASS B PATCH - EXPANSION JOINT	FOOT	50	50		
44213100	PAVEMENT FABRIC	SQ YD	350	350		
44213200	SAW CUTS	FOOT	4400	4400		
44213204	TIE BARS 3/4"	EACH	180	180		
50800105	REINFORCEMENT BARS	POUND	4400	4400		
60100060	CONCRETE HEADWALLS FOR PIPE DRAINS	EACH	4	4		
60100074	SHOULDER REMOVAL AND REPLACEMENT 8"	FOOT	55	55		
60100080	FRENCH DRAINS	CU YD	25	25		
60107600	PIPE UNDERDRAINS 4"	FOOT	75	75		
60108100	PIPE UNDERDRAINS 4" (SPECIAL)	FOOT	40	40		
70100205	TRAFFIC CONTROL AND PROTECTION, STANDARD 701401	EACH	8	8		
70100315	TRAFFIC CONTROL AND PROTECTION, STANDARD 701422	EACH	4	4		
70100420	TRAFFIC CONTROL AND PROTECTION, STANDARD 701411	EACH	4	4		

SUMMARY OF QUANTITIES			TOTAL QUANTITIES	CONSTRUCTION TYPE CODE		
CODE NO	ITEM	UNIT		100% STATE 0005		
70100430	TRAFFIC CONTROL AND PROTECTION, STANDARD 701446	EACH	2	2		
70103815	TRAFFIC CONTROL SURVEILLANCE	CAL DA	15	15		
X0326889	PAVEMENT REPLACEMENT, HOT-MIX ASPHALT	CU YD	250	250		
X6011605	PIPE DRAINS 4" (SPECIAL)	FOOT	40	40		
X7010218	TRAFFIC CONTROL AND PROTECTION, (SPECIAL)	EACH	38	38		
X7010410	SPEED DISPLAY TRAILER	CAL MO	3	3		
Z0002700	BARRICADES	EACH	200	200		
Z0008759	CALL OUT	EACH	6	6		
Z0016001	DECK SLAB REPAIR (FULL DEPTH, TYPE I)	SQ YD	5	5		
Z0016002	DECK SLAB REPAIR (FULL DEPTH, TYPE II)	SQ YD	5	5		
Z0016200	DECK SLAB REPAIR (PARTIAL)	SQ YD	100	100		
Z0017099	DOWEL BAR ASSEMBLY	EACH	8	8		
Z0018900	DRILL AND GROUT DOWEL BARS	EACH	700	700		

FILE NAME =	USER NAME = javisika	DESIGNED -	REVISED -
o:\p\work\p\p\dot\javisika\20405436\207050-akt\plan.dgn		DRAWN -	REVISED -
		CHECKED -	REVISED -
		DATE -	REVISED -

**STATE OF ILLINOIS
DEPARTMENT OF TRANSPORTATION**

SUMMARY OF QUANTITIES

SCALE: SHEET OF SHEETS STA. TO STA.

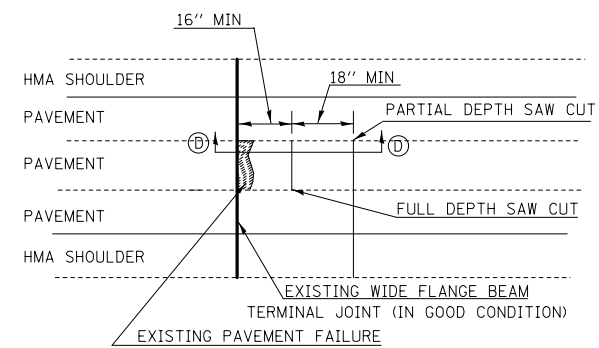
** VARIOUS	
* D-8 ANNUAL PATCHING 2016-1	
F.A. RTE.	SECTION
COUNTY	TOTAL SHEETS
VARIOUS	6
CONTRACT NO. 76H50	
ILLINOIS FED. AID PROJECT	

SUMMARY OF QUANTITIES

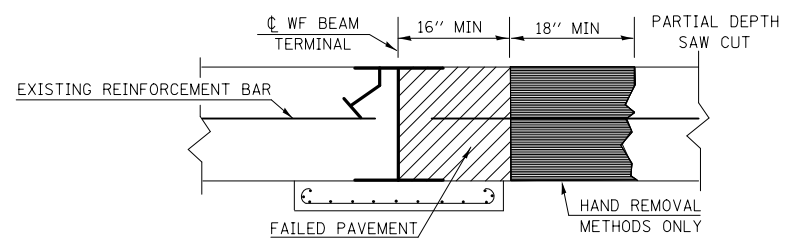
SUMMARY OF QUANTITIES			TOTAL QUANTITIES	CONSTRUCTION TYPE CODE			SUMMARY OF QUANTITIES			TOTAL QUANTITIES	CONSTRUCTION TYPE CODE		
CODE NO	ITEM	UNIT		100% STATE 0005			CODE NO	ITEM	UNIT				
Z0021400	EXPANSION JOINT (SPECIAL)	FOOT	50	50									
Z0029602	TEMPORARY SIGNING	EACH	10	10									
Z0038111	PAVEMENT REMOVAL FOR PATCHING, CASE A	CU YD	150	150									
Z0038112	PAVEMENT REMOVAL FOR PATCHING, CASE B	CU YD	125	125									
Z0038113	PAVEMENT REMOVAL FOR PATCHING, CASE C	CU YD	75	75									
Z0062454	PAVEMENT REPLACEMENT, CONCRETE SPECIAL	CU YD	15	15									
Z0062455	PAVEMENT REPLACEMENT, CONCRETE	CU YD	250	250									

** VARIOUS
• D-8 ANNUAL PATCHING 2016-1

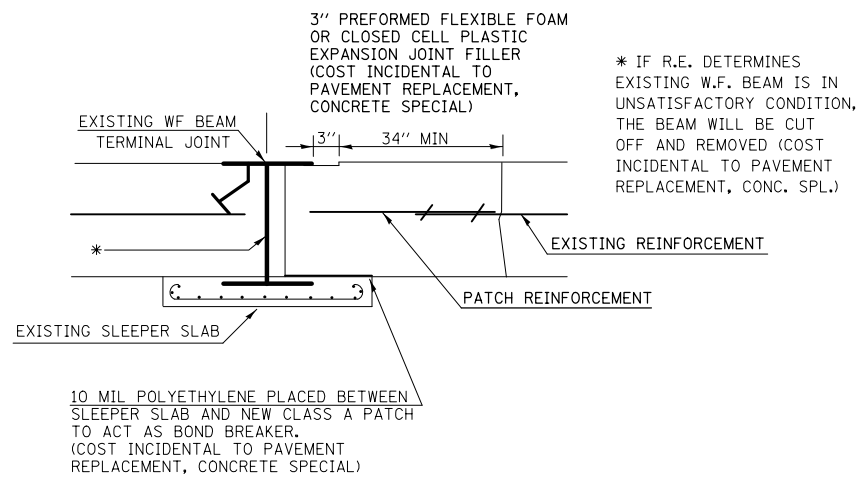
FILE NAME :	USER NAME : lawiska	DESIGNED -	REVISED -	STATE OF ILLINOIS DEPARTMENT OF TRANSPORTATION	SUMMARY OF QUANTITIES	F.A. RTE.	SECTION	COUNTY	TOTAL SHEETS	SHEET NO.
<small>01\pwwork\pwwork\lawiska\d0405436\d076150-shd-plot.dgn</small>	<small>DR</small>	DRAWN -	REVISED -			**	.	VARIOUS	6	5
	<small>PLOT SCALE = 100.0000' / in.</small>	CHECKED -	REVISED -		<small>SCALE:</small>					
	<small>PLOT DATE = 3/23/2015</small>	DATE -	REVISED -		SHEET	OF	SHEETS	STA.	TO	STA.
								<small>ILLINOIS FED. AID PROJECT CONTRACT NO. 76HS0</small>		



PAVEMENT SAWING DETAIL

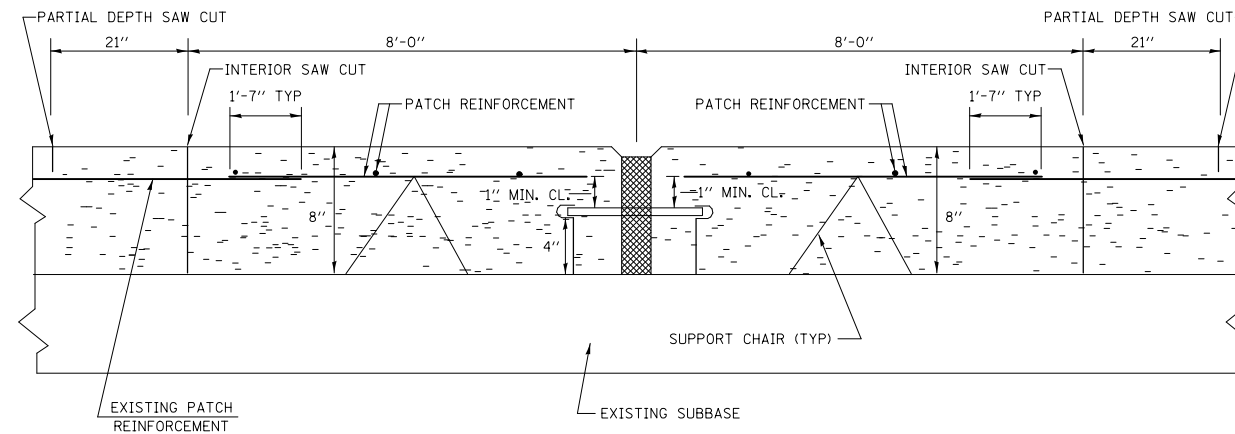


SECTION D-D

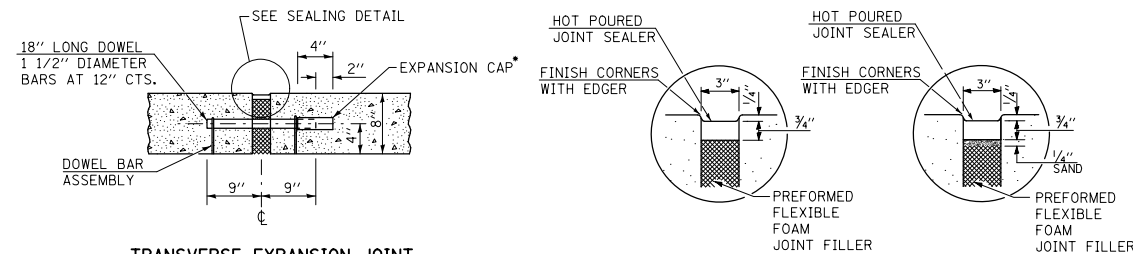


PROPOSED REPAIRS

PAVEMENT REPLACEMENT, CONCRETE



EXPANSION JOINT (SPECIAL)

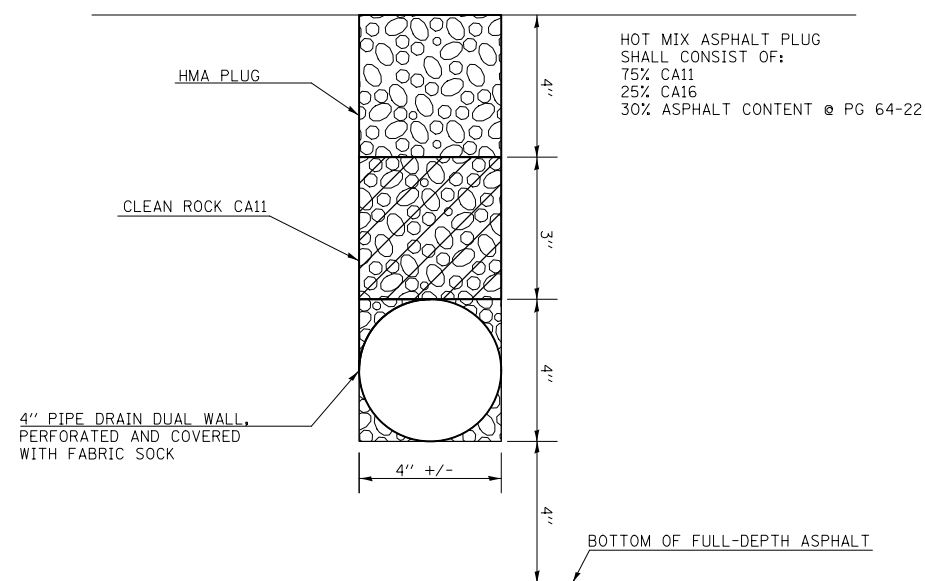


TRANSVERSE EXPANSION JOINT
(FOR PAVEMENTS WITH EQUAL THICKNESS)

SEALING DETAIL

* EXPANSION CAPS SHALL BE INSTALLED ON THE EXPOSED END OF EACH DOWEL BAR ONCE THE HEADER HAS BEEN REMOVED AND THE JOINT FILLER MATERIAL HAS BEEN INSTALLED.

EXPANSION JOINT (SPECIAL)



NOTE: THE THICKNESS OF THE MATERIAL MAY VARY DEPENDING UPON LOCATION.

PIPE DRAINS 4"
(SPECIAL)

•• VARIOUS
• D-8 ANNUAL PATCHING 2016-1

FILE NAME =	USER NAME = lewiska	DESIGNED -	REVISED -
et:\pw\work\p\idot\lewiska\d0405436\d876850-sh-t-plan.dgn		DRAWN -	REVISED -
	PLOT SCALE = 100.0000' / 1in.	CHECKED -	REVISED -
	PLOT DATE = 3/23/2015	DATE -	REVISED -

STATE OF ILLINOIS
DEPARTMENT OF TRANSPORTATION

DETAILS

SCALE: SHEET NO. OF SHEETS STA. TO STA.

F.A. RTE.	SECTION	COUNTY	TOTAL SHEETS	SHEET NO.
••	•	VARIOUS	6	6
CONTRACT NO. 76H50				
FED. ROAD DIST. NO. ILLINOIS FED. AID PROJECT				