

STATE OF ILLINOIS
DEPARTMENT OF TRANSPORTATION
DIVISION OF HIGHWAYS

**PROPOSED
HIGHWAY PLANS**

VARIOUS ROUTES
SECTION D-8 ANNUAL PATCHING 2016-2

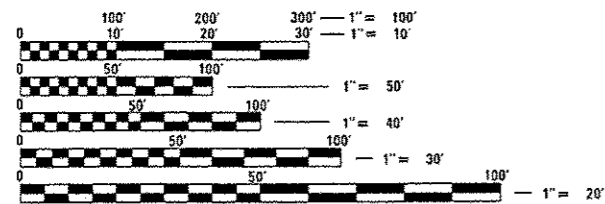
PATCHING
VARIOUS COUNTIES
(ST. CLAIR, CLINTON, MONROE,
MARION, RANDOLPH & WASHINGTON)

C-98-004-15

SEE PAGE 2
FOR LOCATION MAP

INDEX OF SHEETS

1. COVER SHEET
2. LOCATION MAP, I. D. O. T. CONTACT PERSONS
3. GENERAL NOTES, HIGHWAY STANDARDS, AND COMMITMENTS
- 4.-5. SUMMARY OF QUANTITIES
6. DETAILS



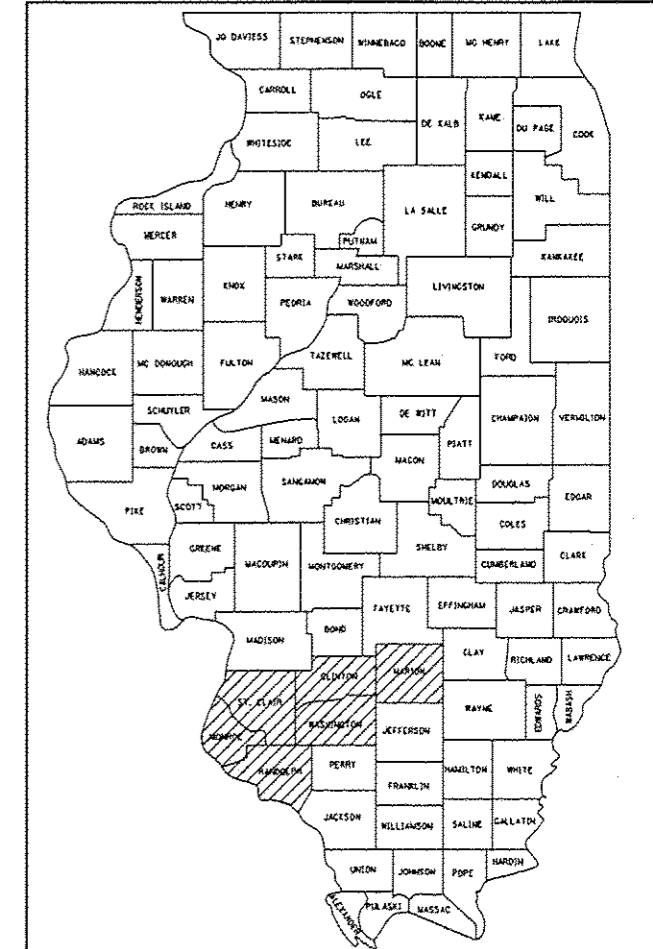
FULL SIZE PLANS HAVE BEEN PREPARED USING STANDARD ENGINEERING SCALES. REDUCED SIZED PLANS WILL NOT CONFORM TO STANDARD SCALES. IN MAKING MEASUREMENTS ON REDUCED PLANS, THE ABOVE SCALES MAY BE USED.

J.U.L.I.E.
JOINT UTILITY LOCATION INFORMATION FOR EXCAVATION
1-800-892-0123
OR 811

PROJECT ENGINEER: PATTI LEBEAU (618) 346-3179
PROJECT LEADER: CRAIG POETTKER (618) 346-3279
SQUAD CONTACT: KEVIN LEWIS (618) 960-7581
CONTRACT NO. 76H51

F.A. RTE.	SECTION	COUNTY	TOTAL SHEETS	SHEET NO.
**	*	VARIOUS	6	1
		ILLINOIS	CONTRACT NO. 76H51	
* D-8 ANNUAL PATCHING 2016-2				
** VARIOUS				

D-98-007-15



LOCATION OF SECTION INDICATED THUS: - [shaded box]

STATE OF ILLINOIS
DEPARTMENT OF TRANSPORTATION
DIVISION OF HIGHWAYS

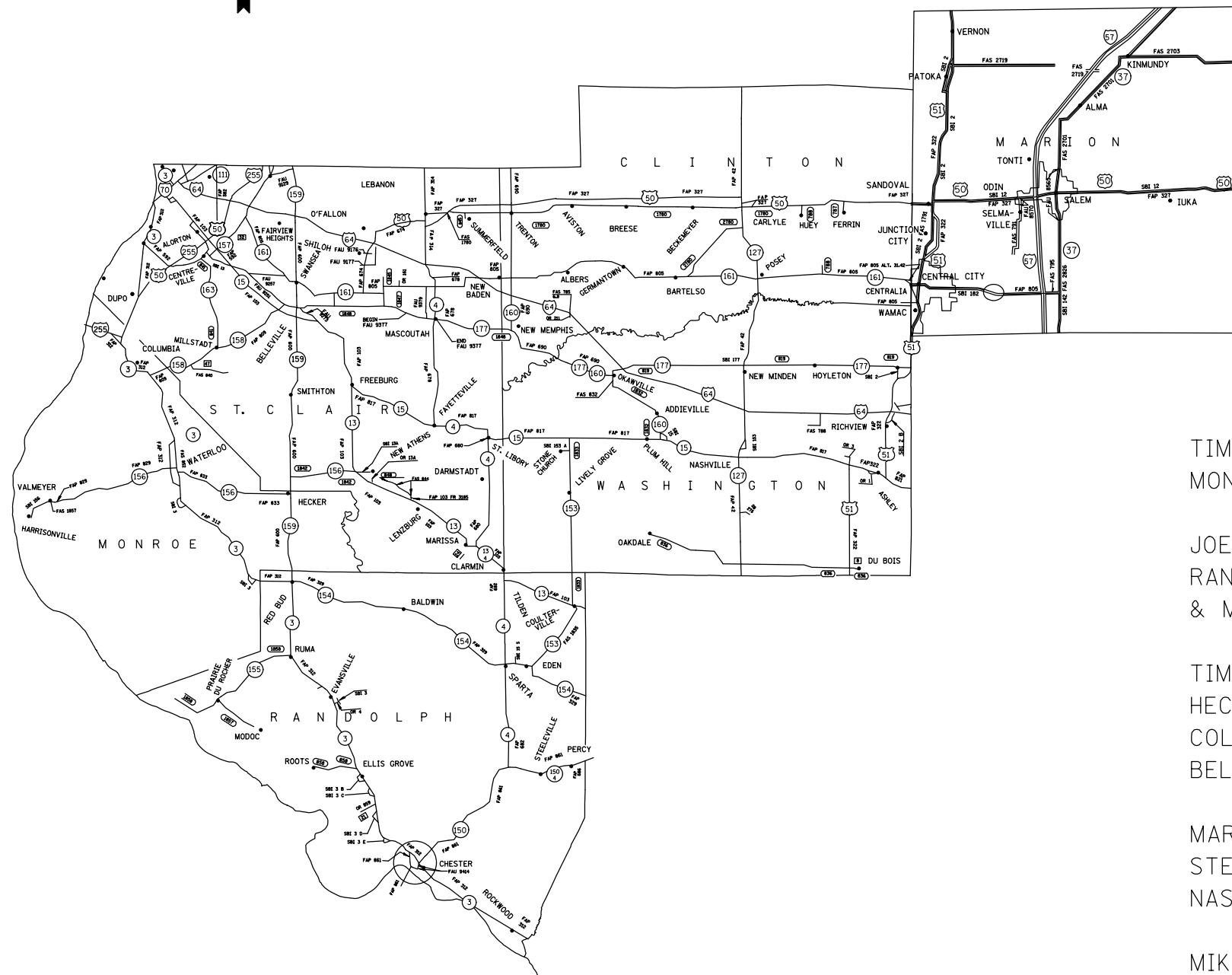
SUBMITTED *March 23 20 15*

Jeffrey Z. Kan...
DEPUTY DIRECTOR OF HIGHWAYS, REGION ENGINEER

May 8 20 15
John D. Baran... PE
ENGINEER OF DESIGN AND ENVIRONMENT

May 8 20 15
Orin... PE
DIRECTOR OF HIGHWAYS, CHIEF ENGINEER

PRINTED BY THE AUTHORITY
OF THE STATE OF ILLINOIS



I.D.O.T. CONTACT PERSONS

TIM PRICE, AREA FIELD ENGINEER:
MONROE & ST. CLAIR COUNTIES
OFFICE PHONE (618) 346-3284

JOE MONROE, OPERATIONS ENGINEER:
RANDOLPH, CLINTON, MARION, WASHINGTON,
& MADISON COUNTIES
OFFICE PHONE (618) 346-3250

TIM PRICE, AREA FIELD ENGINEER
HECKER YARD (MONROE) OFFICE PHONE (618) 473-2583
COLUMBIA YARD (MONROE) OFFICE PHONE (618) 281-4565
BELLEVILLE YARD (ST. CLAIR) OFFICE PHONE (618) 235-1466

MARK GARD, FIELD TECHNICIAN
STEELEVILLE YARD (RANDOLPH) OFFICE PHONE (618) 965-9611
NASHVILLE YARD (WASHINGTON) OFFICE PHONE (618) 327-3914

MIKE COX, FIELD TECHNICIAN
BOWMAN YARD (ST. CLAIR) OFFICE PHONE (618) 875-0177

JASON ROECKENHAUS, FIELD TECHNICIAN
CARLYLE YARD (CLINTON) OFFICE PHONE (618) 594-3001
SALEM YARD (MARION) OFFICE PHONE (618) 548-0463
GREENVILLE YARD (BOND) OFFICE PHONE (618) 664-0982

•• VARIOUS
• D-8 ANNUAL PATCHING 2016-2

FILE NAME = c:\pwork\pwork\lewis\lewis\405449\d87651-sh-t-plan.dgn	USER NAME = lewis	DESIGNED -	REVISED -
	PLOT SCALE = 100.0000' / in.	DRAWN -	REVISED -
	PLOT DATE = 3/23/2015	CHECKED -	REVISED -
		DATE -	REVISED -

**STATE OF ILLINOIS
DEPARTMENT OF TRANSPORTATION**

LOCATION MAP, I. D. O. T. CONTACT PERSONS				
SCALE:	SHEET NO.	OF SHEETS	STA.	TO STA.

F.A. RTE.	SECTION	COUNTY	TOTAL SHEETS	SHEET NO.
••	•	VARIOUS	6	2
CONTRACT NO. 76H51				
FED. ROAD DIST. NO. ILLINOIS FED. AID PROJECT				

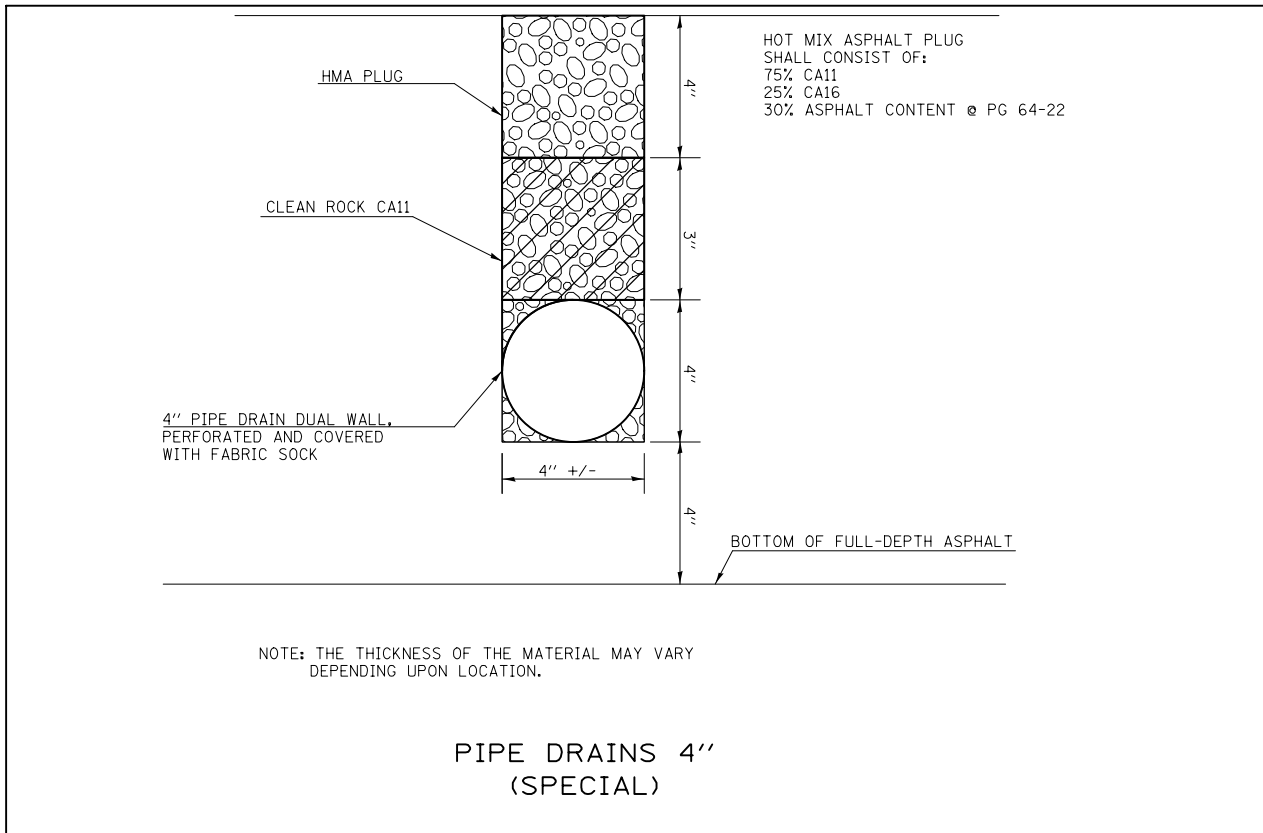
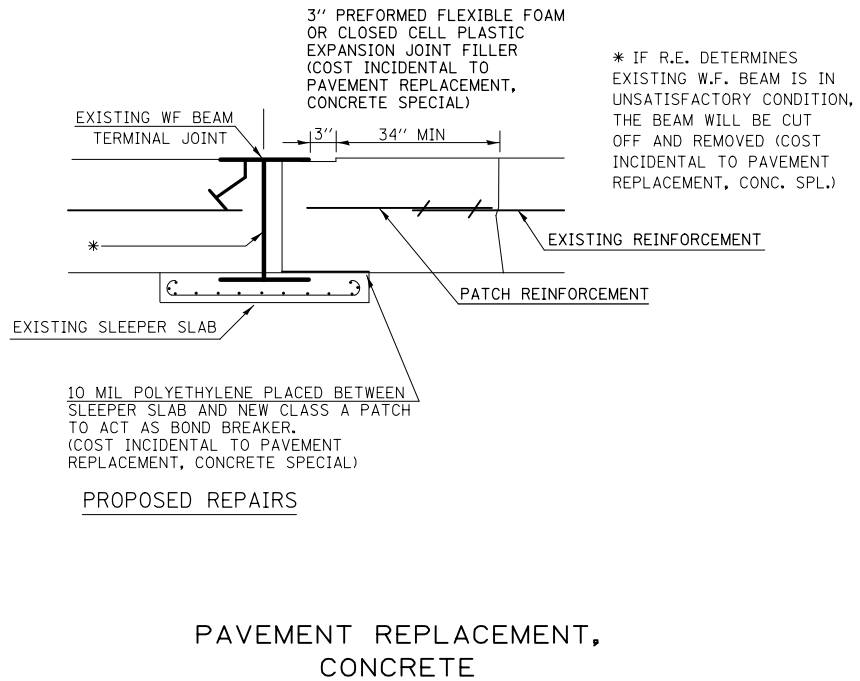
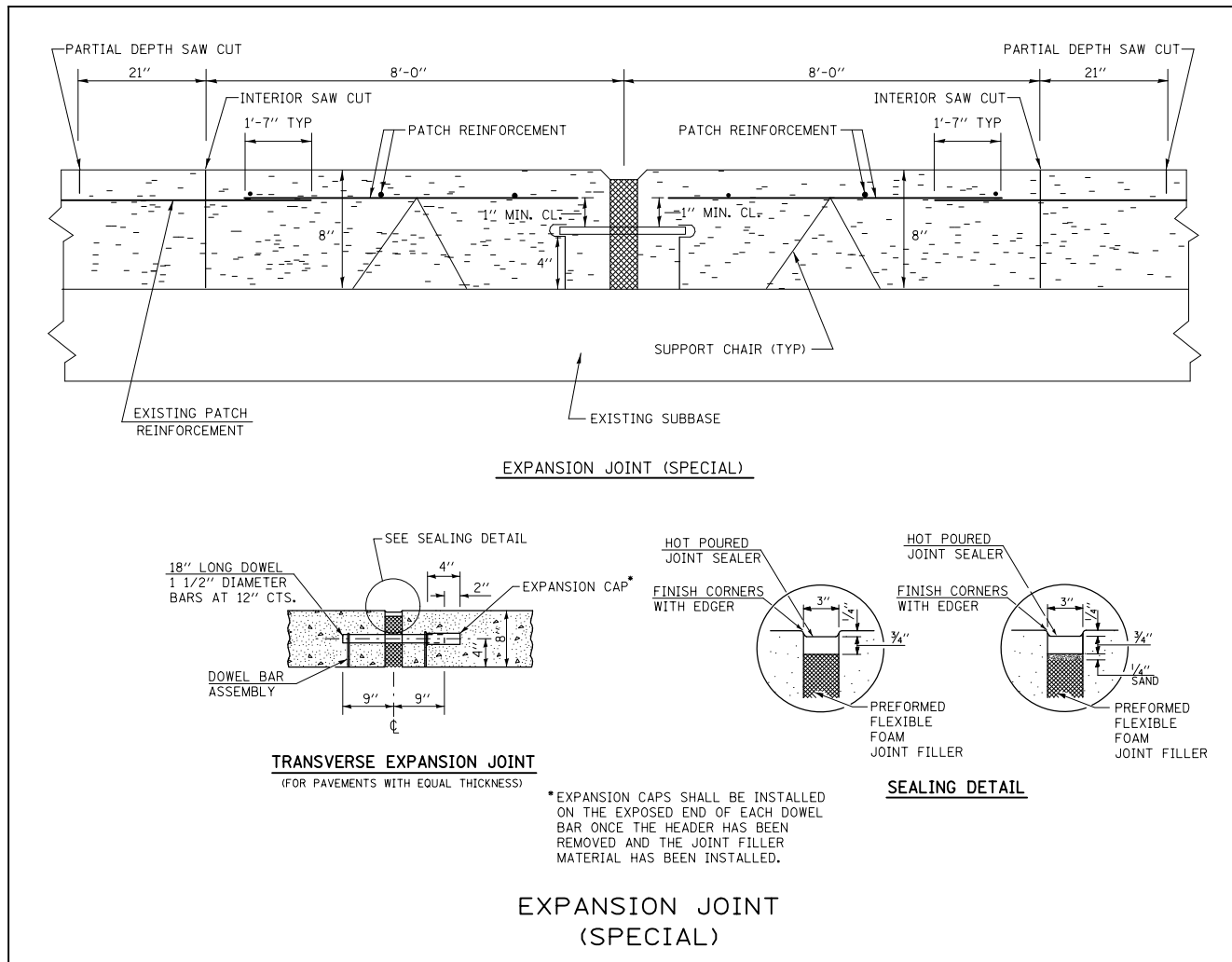
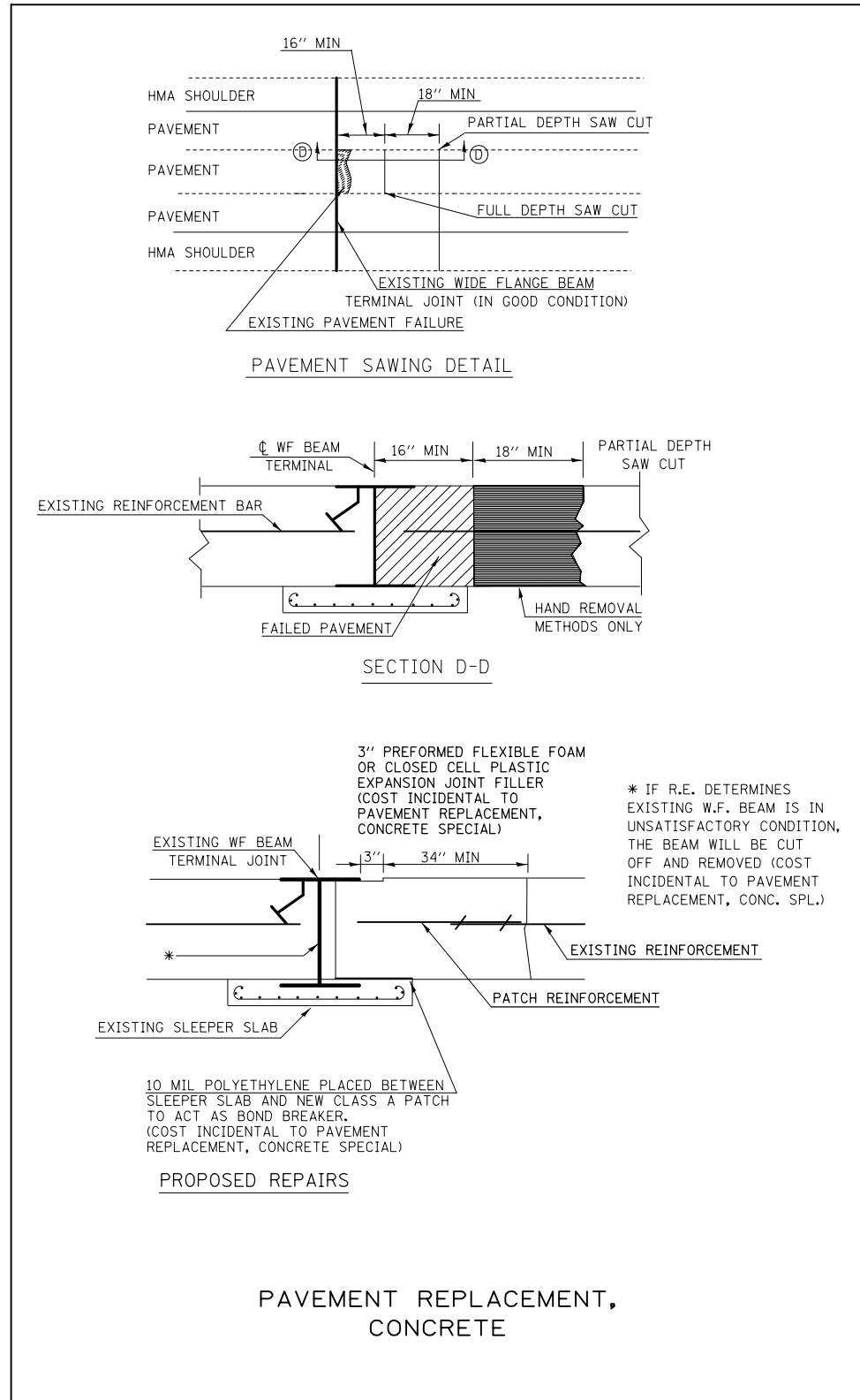
SUMMARY OF QUANTITIES

SUMMARY OF QUANTITIES			TOTAL QUANTITIES	CONSTRUCTION TYPE CODE		
CODE NO	ITEM	UNIT		100% STATE 0005		
44201294	CLASS B PATCH - EXPANSION JOINT	FOOT	50	50		
44213100	PAVEMENT FABRIC	SQ YD	350	350		
44213200	SAW CUTS	FOOT	4400	4400		
44213204	TIE BARS 3/4"	EACH	180	180		
50800105	REINFORCEMENT BARS	POUND	4400	4400		
60100060	CONCRETE HEADWALLS FOR PIPE DRAINS	EACH	4	4		
60100074	SHOULDER REMOVAL AND REPLACEMENT 8"	FOOT	55	55		
60100080	FRENCH DRAINS	CU YD	25	25		
60107600	PIPE UNDERDRAINS 4"	FOOT	75	75		
60108100	PIPE UNDERDRAINS 4" (SPECIAL)	FOOT	40	40		
70100205	TRAFFIC CONTROL AND PROTECTION, STANDARD 701401	EACH	8	8		
70100315	TRAFFIC CONTROL AND PROTECTION, STANDARD 701422	EACH	4	4		
70100420	TRAFFIC CONTROL AND PROTECTION, STANDARD 701411	EACH	4	4		

SUMMARY OF QUANTITIES			TOTAL QUANTITIES	CONSTRUCTION TYPE CODE		
CODE NO	ITEM	UNIT		100% STATE 0005		
70100430	TRAFFIC CONTROL AND PROTECTION, STANDARD 701446	EACH	2	2		
70103815	TRAFFIC CONTROL SURVEILLANCE	CAL DA	15	15		
X0326889	PAVEMENT REPLACEMENT, HOT-MIX ASPHALT	CU YD	250	250		
X6011605	PIPE DRAINS 4" (SPECIAL)	FOOT	40	40		
X7010218	TRAFFIC CONTROL AND PROTECTION, (SPECIAL)	EACH	38	38		
X7010410	SPEED DISPLAY TRAILER	CAL MO	3	3		
Z0002700	BARRICADES	EACH	200	200		
Z0008759	CALL OUT	EACH	6	6		
Z0016001	DECK SLAB REPAIR (FULL DEPTH, TYPE I)	SQ YD	5	5		
Z0016002	DECK SLAB REPAIR (FULL DEPTH, TYPE II)	SQ YD	5	5		
Z0016200	DECK SLAB REPAIR (PARTIAL)	SQ YD	100	100		
Z0017099	DOWEL BAR ASSEMBLY	EACH	8	8		
Z0018900	DRILL AND GROUT DOWEL BARS	EACH	700	700		

76

** VARIOUS
 * D-B ANNUAL PATCHING 2016-2
 ILLINOIS FED. AID PROJECT
 CONTRACT NO. 76H51



FILE NAME =	USER NAME = lewiska	DESIGNED -	REVISED -
et:\pw\work\p\dot\lewiska\d0405449\d87651-sh-t-plan.dgn		DRAWN -	REVISED -
	PLOT SCALE = 100.0000' / 1in.	CHECKED -	REVISED -
	PLOT DATE = 3/23/2015	DATE -	REVISED -

**STATE OF ILLINOIS
DEPARTMENT OF TRANSPORTATION**

DETAILS				
SCALE:	SHEET NO.	OF SHEETS	STA.	TO STA.

•• VARIOUS
• D-8 ANNUAL PATCHING 2016-2

F.A. RTE.	SECTION	COUNTY	TOTAL SHEETS	SHEET NO.
••	•		6	6
CONTRACT NO. 76H51				
FED. ROAD DIST. NO. ILLINOIS FED. AID PROJECT				