

STATE OF ILLINOIS
DEPARTMENT OF TRANSPORTATION
DIVISION OF HIGHWAYS
PROPOSED
HIGHWAY PLANS

FAP 304 & FAS 749 (IL 100 & IL 3)
SECTION 101-1RS-2
CAPE SEAL
JERSEY COUNTY

C-98-026-15

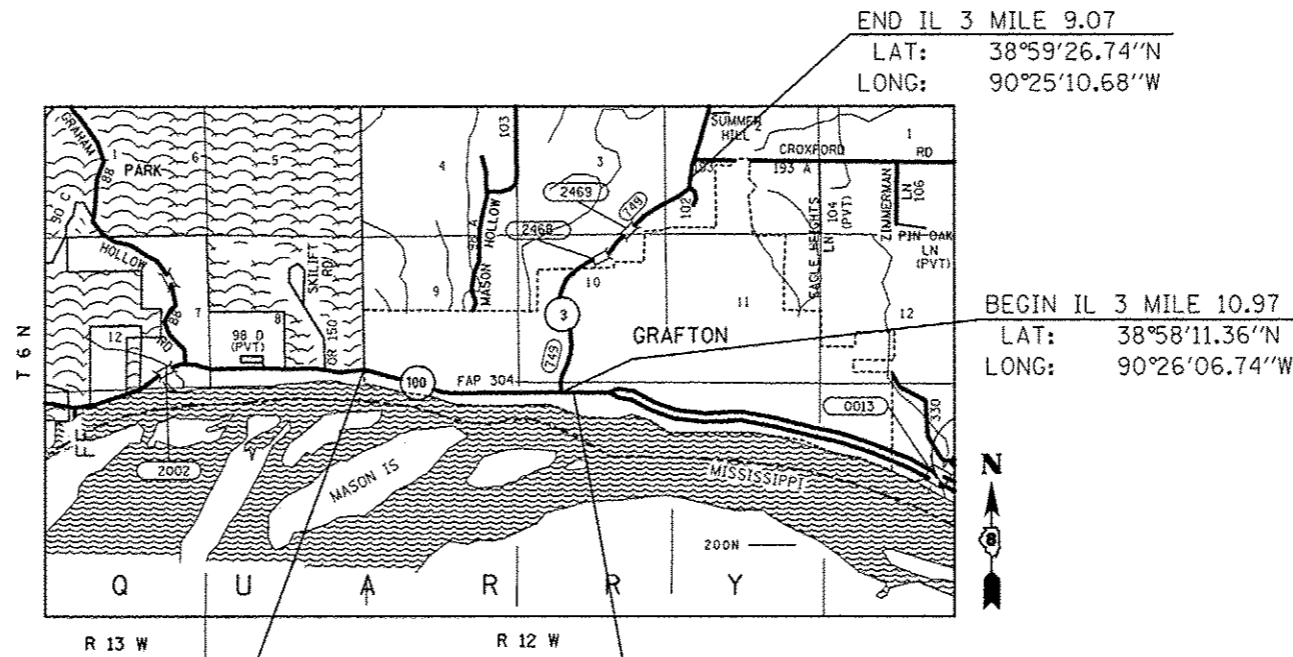
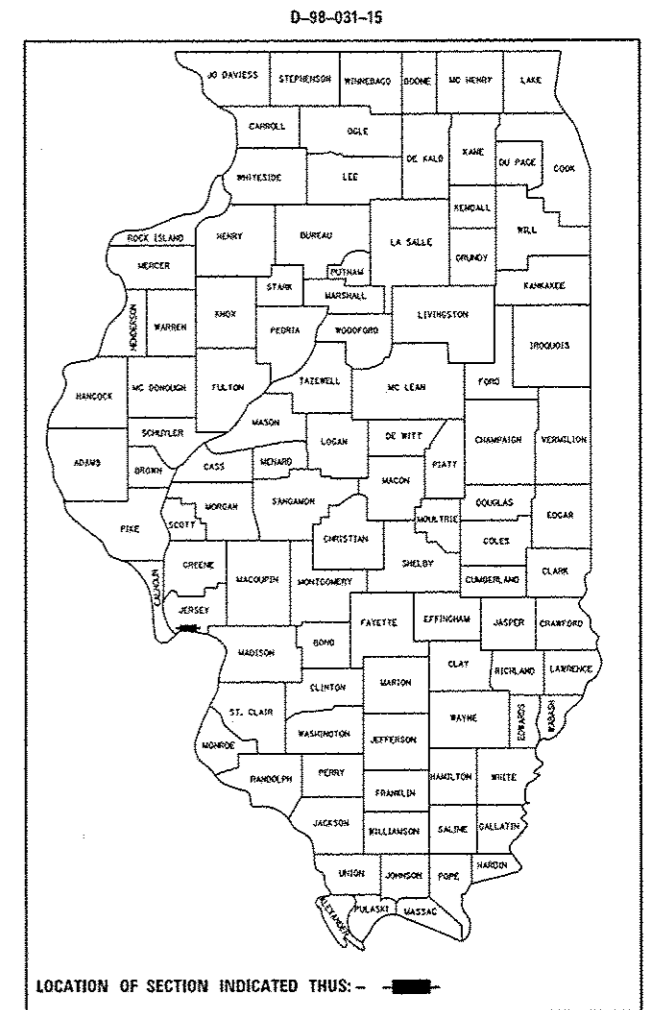
ROUTE	SECTION	COUNTY	TOTAL SHEETS	SHEET NO.
* 101-1RS-2		JERSEY	14	1
* FAP 304/FAS 749		ILLINOIS	CONTRACT NO. 76H74	

INDEX OF SHEETS

- 1 COVER SHEET
- 2 GENERAL NOTES, HIGHWAY STANDARDS
- 3-4 SUMMARY OF QUANTITIES
- 5-6 TYPICAL ROADWAY SECTIONS
- 7 SCHEDULES OF QUANTITIES
- 8 ROADWAY LAYOUTS
- 9-10 PAVEMENT MARKING DETAILS
- 11-14 CROSSWALK AND ADA RAMP DETAILS

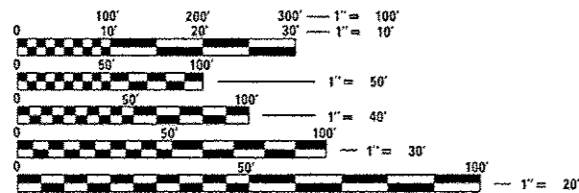
FOR HIGHWAY STANDARDS, SEE SHEET NO. 2

	ADT & FUNCTIONAL CLASSIFICATION	
	FAP 304	FAS 749
	IL 100	IL 3
	MAIN ST.	MARKET ST.
ADT (2013):	4,450	1,450
ADT (2015):	4,550	1,500
ADT (2035):	6,000	1,850
MU:	2.2%	1.0%
SU:	3.0%	2.8%
FUNCTIONAL CLASSIFICATION	OTHER PRINCIPAL ARTERIAL	MAJOR COLLECTOR



BEGIN IL 100 MILE 18.46
 LAT: 38°58'18.11"N
 LONG: 90°27'33.84"W

END IL 100 MILE 19.90
 LAT: 38°58'11.25"N
 LONG: 90°26'03.32"W



FULL SIZE PLANS HAVE BEEN PREPARED USING STANDARD ENGINEERING SCALES. REDUCED SIZED PLANS WILL NOT CONFORM TO STANDARD SCALES. IN MAKING MEASUREMENTS ON REDUCED PLANS, THE ABOVE SCALES MAY BE USED.

J.U.L.I.E.
 JOINT UTILITY LOCATION INFORMATION FOR EXCAVATION
 1-800-892-0123
 OR 811

PROJECT ENGINEER: MICHAEL PRITCHETT 346-3180
 SENIOR DESIGNER: BO WEDMORE 346-3206

CONTRACT NO. 76H74

GROSS LENGTH = 16,368 FT. = 3.1 MILE
 NET LENGTH = 16,368 FT. = 3.1 MILE

STATE OF ILLINOIS
 DEPARTMENT OF TRANSPORTATION
 DIVISION OF HIGHWAYS

SUBMITTED *March 26 2015*

Jeffrey Z. Kan...
 DEPUTY DIRECTOR OF HIGHWAYS, REGION 5 ENGINEER

May 8 2015
John D. Baranzoli P.E.
 ENGINEER OF DESIGN AND ENVIRONMENT

May 8 2015
Omer Deman P.E.
 DIRECTOR OF HIGHWAYS, CHIEF ENGINEER

**PRINTED BY THE AUTHORITY
 OF THE STATE OF ILLINOIS**

GENERAL NOTES

1. ILLINOIS STATE LAW REQUIRES A 48-HOUR NOTICE BE GIVEN TO ALL UTILITIES WITHIN THE PROJECT AREA BEFORE DIGGING. FIELD MARKING OF FACILITIES MAY BE OBTAINED BY CONTACTING J.U.L.I.E. OR FOR NON-MEMBERS, THE UTILITY COMPANY DIRECTLY. AGENCIES KNOWN TO HAVE FACILITIES WITHIN THE PROJECT AREA ARE AS FOLLOWS:

- * AMEREN ILLINOIS - (GAS & ELECTRIC)
- * GRAFTON TELEPHONE COMPANY - (COMMUNICATIONS)
- * CITY OF GRAFTON - (SANITARY SEWER)
- * ILLINOIS AMERICAN WATER COMPANY - (WATER)
- * JERSEY COUNTY RURAL WATER COMPANY - (WATER)
- * M.J.M. ELECTRIC COOPERATIVE, INC. - (ELECTRIC)

MEMBERS OF J.U.L.I.E. CALL TOLL FREE (800) 892-0123 OR 811 AND ARE INDICATED BY AN *. NON-J.U.L.I.E. MEMBERS MUST BE NOTIFIED INDIVIDUALLY.

2. THE CONTRACTOR SHALL VERIFY ALL DIMENSIONS AND CONDITIONS IN THE FIELD PRIOR TO CONSTRUCTION AND ORDERING OF MATERIALS.
3. THE PROPOSED PERMANENT PAVEMENT MARKING SHALL MATCH THE LOCATIONS OF THE EXISTING PAVEMENT MARKING, EXCEPTY WHERE DETAILED WITHIN THE PLANS AND AS DIRECTED BY THE ENGINEER.
4. ANY MISCELLANEOUS EARTHWORK, SEEDING OR NUTRIENTS REQUIRED TO COMPLETE THE PROJECT SHALL BE DONE ACCORDING TO SECTION 250 OF THE STANDARD SPECIFICATIONS FOR ROAD AND BRIDGE CONSTRUCTION AND NOT PAID FOR SEPARATELY.
5. THE CONTRACTOR AND THE ENGINEER SHALL BE AWARE THAT NO FULL SURVEY WAS PERFORMED FOR THIS PROJECT. THE STATIONING, TOPOGRAPHY, AND QUANTITIES SHOWN IN THE PLANS WERE CREATED USING MICROFILM AND FIELD MEASUREMENTS. ALL SHALL BE ASSUMED TO BE APPROXIMATE. THE CONTRACTOR SHALL VERIFY DIMENSIONS AND CONDITIONS IN THE FIELD PRIOR TO CONSTRUCTION AND ORDERING OF MATERIALS.
6. FOR THE HMA SURFACE TREATMENT, CLASS A-1, THE SEAL COAT AGGREGATE USED WILL BE A CA-16 OR CM 16. THE AGGREGATES FOR THE MICRO-SURFACING SHALL MEET THE FRICTION AGGREGATE REQUIREMENTS FOR MIXTURE C IN ARTICLE 1004.03(A).

STANDARDS

000001-06	STANDARD SYMBOLS, ABBREVIATIONS AND PATTERNS
001001-02	AREAS OF REINFORCEMENT BARS
001006	DECIMAL OF AN INCH AND OF A FOOT
424001-08	PERPENDICULAR CURB RAMPS FOR SIDEWALKS
424006-02	DIAGONAL CURB RAMPS FOR SIDEWALKS
424011-02	CORNER PARALLEL CURB RAMPS FOR SIDEWALKS
424021-03	DEPRESSED CORNER FOR SIDEWALKS
424031-01	MEDIAN PEDESTRIAN CROSSINGS
442101-07	CLASS B PATCHES
606001-06	CONCRETE CURB TYPE B AND COMBINATION CONCRETE CURB AND GUTTER
606301-04	PC CONCRETE ISLANDS AND MEDIANS
701001-02	OFF-RD OPERATIONS, 2L, 2W, MORE THAN 15' AWAY
701006-05	OFF-RD OPERATIONS, 2L, 2W, 15' TO 24" FROM PAVEMENT EDGE
701201-04	LANE CLOSURE, 2L, 2W, DAY ONLY, FOR SPEEDS ≥ 45 MPH
701306-03	LANE CLOSURE, 2L, 2W, SLOW MOVING OPERATIONS DAY ONLY, FOR SPEEDS ≥ 45 MPH
701301-04	LANE CLOSURE, 2L, 2W, SHORT TIME OPERATIONS
701311-03	LANE CLOSURE 2L, 2W MOVING OPERATIONS-DAY ONLY
701336-06	LANE CLOSURE, 2L, 2W, WORK AREAS IN SERIES, FOR SPEEDS ≥ 45 MPH
701501-06	URBAN LANE CLOSURE, 2L, 2W, UNDIVIDED
701701-09	URBAN LANE CLOSURE, MULTILANE INTERSECTION
701801-05	SIDEWALK, CORNER OR CROSSWALK CLOSURE
701901-04	TRAFFIC CONTROL DEVICES
780001-05	TYPICAL PAVEMENT MARKINGS
781001-03	TYPICAL APPLICATIONS RAISED REFLECTIVE PAVEMENT MARKERS
782001	PRISMATIC CURB REFLECTORS

COMMITMENTS

NONE

MIXTURE REQUIREMENTS

ROUTE	FAP/FAS 304/749 (IL 100/IL 3)
SECTION	101-JRS-2
COUNTY	JERSEY
CONTRACT	76H74

DESCRIPTION:	CAPE SEAL - IL 100 FROM 0.2 MI E OF SKI LIFT RD TO VINE ST IN GRAFTON IL 3 FROM 0.2 MI N OF GRAFTON HILLS DR TO IL 100
--------------	---------------------------------------------------------------------------------------------------------------------------

MIXTURE USE	HMA REPLACEMENT
AC/PG	PG 64-22
RAP % (MAX)	SEE SPECIAL PROVISION
DESIGN AIR VOIDS	4.0% @ Ndes=70
MIX COMPOSITION (GRADATION MIXTURE)	IL 19.0
FRICTION AGG	MIXTURE "B"
QUALITY MGMT PROGRAM	QC/OA

PLAN QUANTITIES FOR HMA ITEMS ARE CALCULATED USING A UNIT WEIGHT OF 112 LB/SO YD/IN (59.8 KG/SO M/25 MM THICKNESS).

FILE NAME :	USER NAME = wadmora_jb	DESIGNED -	REVISED -	STATE OF ILLINOIS DEPARTMENT OF TRANSPORTATION	ROUTE	SECTION	COUNTY	TOTAL SHEETS	SHEET NO.	
c:\p\work\psidot\wadmora_jb\8419865\ds	SA7*skc-plan.dgn	DRAWN -	REVISED -		* 101-JRS-2	JERSEY	14	2		
	PLOT SCALE = 100.0000' / 1" =	CHECKED -	REVISED -		* FAP 304/FAS 749	CONTRACT NO. 76H74				
	PLOT DATE = 3/26/2015	DATE -	REVISED -		ILLINOIS FED. AID PROJECT					
					SCALE:	SHEET	OF	SHEETS	STA.	TO STA.

CODE NO.	ITEM	UNIT	TOTAL QUANTITY	100% STATE CONSTRUCTION CODE	
				FAP 304	FAS 749
				ROADWAY 0005	ROADWAY 0005
				RURAL	RURAL
40601005	HOT-MIX ASPHALT REPLACEMENT OVER PATCHES	TON	8.2	4.1	4.1
42400100	PORTLAND CEMENT CONCRETE SIDEWALK 4 INCH	SQ FT	1599	1137.5	461.5
42400410	PORTLAND CEMENT CONCRETE SIDEWALK 8 INCH	SQ FT	139.5		139.5
42400800	DETECTABLE WARNINGS	SQ FT	195	114	81
44000100	PAVEMENT REMOVAL	SQ YD	25		25
44000500	COMBINATION CURB AND GUTTER REMOVAL	FOOT	139	67	72
44000600	SIDEWALK REMOVAL	SQ FT	1518	1077	441
44002216	HOT-MIX ASPHALT REMOVAL OVER PATCHES, 4"	SQ YD	36	18	18
44003100	MEDIAN REMOVAL	SQ FT	99		99
44200982	CLASS B PATCHES, TYPE II, 11 INCH	SQ YD	18	18	
44200986	CLASS B PATCHES, TYPE III, 11 INCH	SQ YD	18		18
44213100	PAVEMENT FABRIC	SQ YD	18		18
44213200	SAW CUTS	FOOT	172	106	66
60603500	COMBINATION CONCRETE CURB AND GUTTER, TYPE B-6.06	FOOT	78		78

CODE NO.	ITEM	UNIT	TOTAL QUANTITY	100% STATE CONSTRUCTION CODE	
				FAP 304	FAS 749
				ROADWAY 0005	ROADWAY 0005
				RURAL	RURAL
60605000	COMBINATION CONCRETE CURB AND GUTTER, TYPE B-6.24	FOOT	99	70	29
60618300	CONCRETE MEDIAN SURFACE, 4 INCH	SQ FT	155		155
67100100	MOBILIZATION	L SUM	1	0.5	0.5
70100450	TRAFFIC CONTROL AND PROTECTION, STANDARD 701201	L SUM	1	0.5	0.5
70100460	TRAFFIC CONTROL AND PROTECTION, STANDARD 701306	L SUM	1	0.5	0.5
70100600	TRAFFIC CONTROL AND PROTECTION, STANDARD 701336	L SUM	1	0.5	0.5
70102620	TRAFFIC CONTROL AND PROTECTION, STANDARD 701501	L SUM	1	0.5	0.5
70102635	TRAFFIC CONTROL AND PROTECTION, STANDARD 701701	L SUM	1	0.5	0.5
70102640	TRAFFIC CONTROL AND PROTECTION, STANDARD 701801	L SUM	1	0.5	0.5
70300100	SHORT TERM PAVEMENT MARKING	FOOT	1664	712	952
70300210	TEMPORARY PAVEMENT MARKING LETTERS AND SYMBOLS	SQ FT	62.4	31.2	31.2
70300220	TEMPORARY PAVEMENT MARKING - LINE 4"	FOOT	61256	17524	43732
70300250	TEMPORARY PAVEMENT MARKING - LINE 8"	FOOT	177	177	
70300260	TEMPORARY PAVEMENT MARKING - LINE 12"	FOOT	540	259	281

FILE NAME =	USER NAME = wadmora.jh	DESIGNED -	REVISED -
cr:\p-work\psidot\wadmora.jh\08419865\0874-ghs-plan.dgn		DRAWN -	REVISED -
		CHECKED -	REVISED -
		DATE -	REVISED -

**STATE OF ILLINOIS
DEPARTMENT OF TRANSPORTATION**

SUMMARY OF QUANTITIES			
SCALE:	SHEET	OF	SHEETS
		STA.	TO STA.

ROUTE	SECTION	COUNTY	TOTAL SHEETS	SHEET NO.
*	101-1RS-2	JERSEY	14	3
* FAP 304/FAS 749			CONTRACT NO. 76H74	
ILLINOIS FED. AID PROJECT				

100% STATE

CONSTRUCTION CODE

FAP 304 FAS 749

ROADWAY ROADWAY

0005 0005

RURAL RURAL

CODE NO.	ITEM	UNIT	TOTAL QUANTITY	CONSTRUCTION CODE	
				FAP 304	FAS 749
70300280	TEMPORARY PAVEMENT MARKING - LINE 24"	FOOT	31		31
70301000	WORK ZONE PAVEMENT MARKING REMOVAL	50 FT	21757	6488	15269
* 78000100	THERMOPLASTIC PAVEMENT MARKING - LETTERS AND SYMBOLS	50 FT	62.4	31.2	31.2
* 78000200	THERMOPLASTIC PAVEMENT MARKING - LINE 4"	FOOT	61256	17524	43732
* 78000500	THERMOPLASTIC PAVEMENT MARKING - LINE 8"	FOOT	177	177	
* 78000600	THERMOPLASTIC PAVEMENT MARKING - LINE 12"	FOOT	540	259	281
* 78000650	THERMOPLASTIC PAVEMENT MARKING - LINE 24"	FOOT	31		31
* 78100100	RAISED REFLECTIVE PAVEMENT MARKER	EACH	283	124	159
* 78200300	PRISMATIC CURB REFLECTOR	EACH	9		9
78300100	PAVEMENT MARKING REMOVAL	50 FT	21201	6250	14951
78300200	RAISED REFLECTIVE PAVEMENT MARKER REMOVAL	EACH	283	124	159
X0326218	FIBER-MODIFIED ASPHALT CRACK SEALING	FOOT	31038	13382	17656
X0326219	BUMP REMOVAL	EACH	36	15	21
X7810400	TEMPORARY RAISED PAVEMENT MARKER	EACH	1812	536	1276

* SPECIALTY ITEM

FILE NAME =	USER NAME = vedmorejb	DESIGNED -	REVISED -
\\pwwork\pwwork\vedmorejb\08419865\0076h74-elt-plan.dgn		DRAWN -	REVISED -
		CHECKED -	REVISED -
		DATE -	REVISED -

STATE OF ILLINOIS
DEPARTMENT OF TRANSPORTATION

SUMMARY OF QUANTITIES

ROUTE	SECTION	COUNTY	TOTAL SHEETS	SHEET NO.
*	101-IR5-2	JERSEY	14	4
* FAP 304/FAS 749			CONTRACT NO. 76H74	
ILLINOIS/REG. AID PROJECT				
SCALE:	SHEET	OF	SHEETS	STA. TO STA.

100% STATE

CONSTRUCTION CODE

FAP 304 FAS 749

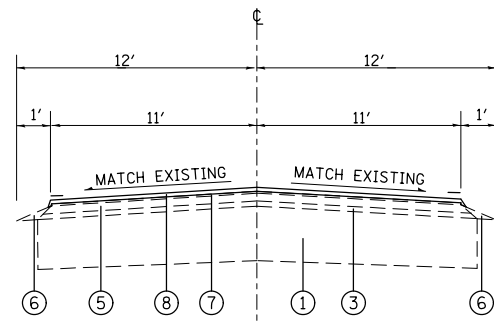
ROADWAY ROADWAY

0005 0005

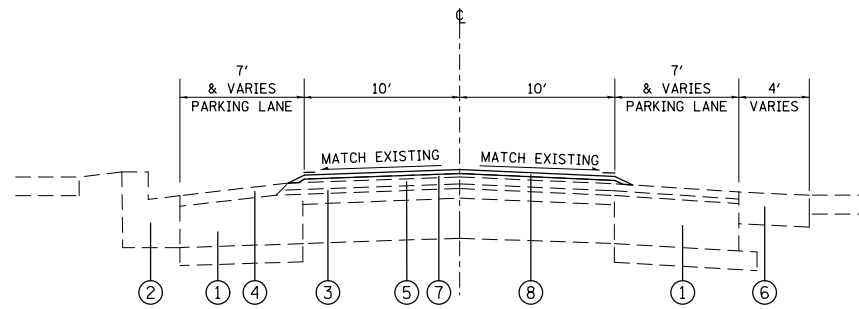
RURAL RURAL

CODE NO.	ITEM	UNIT	TOTAL QUANTITY	CONSTRUCTION CODE	
				FAP 304	FAS 749
Z0036200	PAINT CURB	FOOT	59.5		59.5
Z0064265	CAPE SEAL	50 YD	54729	23102	31627
44201292	DOWEL BARS 5/8"	EACH	66	44	22

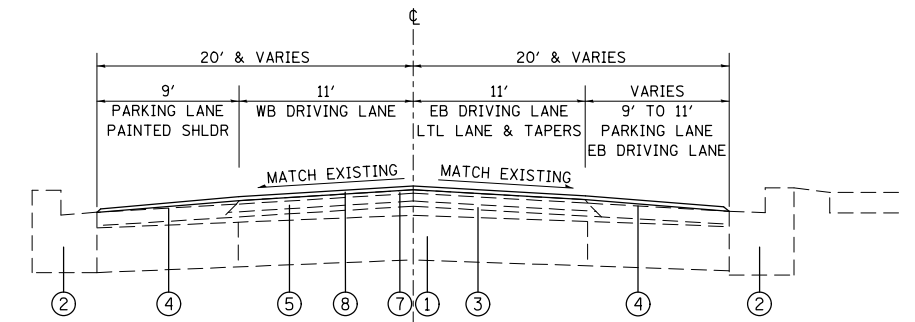
17



IL RTE 100 TYPICAL
MI STA. 18.46 TO MI STA. 19.56



IL RTE 100 TYPICAL
MI STA. 19.56 TO MI STA. 19.76



IL RTE 100 TYPICAL
MI STA. 19.76 TO MI STA. 19.90

LEGEND (THIS SHEET ONLY)

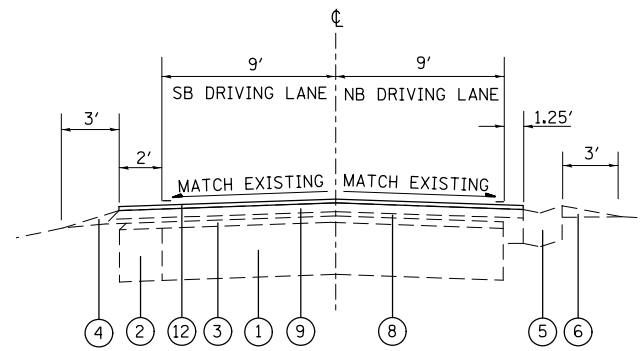
- ① EXISTING PCC BASE COURSE, 10 1/2"
- ② EXISTING COMBINATION CONCRETE CURB AND GUTTER, B-6.24
- ③ EXISTING LEVELING BINDER (MACHINE METHOD) SUPERPAVE N70, 1"
- ④ EXISTING BITUMINOUS SHOULDER, SUPERPAVE VARIABLE DEPTH
- ⑤ EXISTING BITUMINOUS CONCRETE SURFACE COURSE, SUPERPAVE, MIX"D". N70, 1 1/2"
- ⑥ EXISTING AGGREGATE SHOULDER
- ⑦ EXISTING MICRO-SURFACING, SINGLE PASS, TYPE 2
- ⑧ PROPOSED CAPE SEAL

FILE NAME =	USER NAME = wedmore_jb	DESIGNED -	REVISED -
et:\pw\work\p\dot\wedmore_jb\d0419865\d876h74-sh-t-plan.dgn		DRAWN -	REVISED -
	PLOT SCALE = 100.0000' / 1in.	CHECKED -	REVISED -
	PLOT DATE = 3/26/2015	DATE -	REVISED -

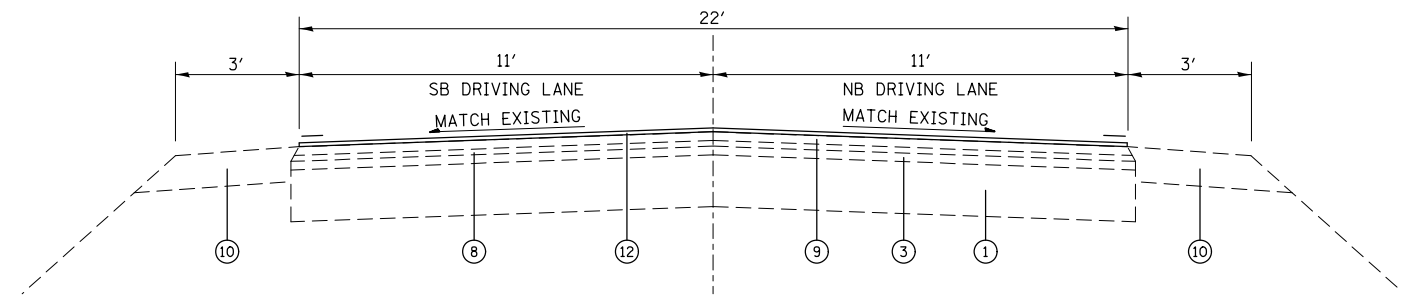
**STATE OF ILLINOIS
DEPARTMENT OF TRANSPORTATION**

IL 100 TYPICAL SECTIONS			
SCALE:	SHEET	OF	SHEETS
	STA.	TO	STA.

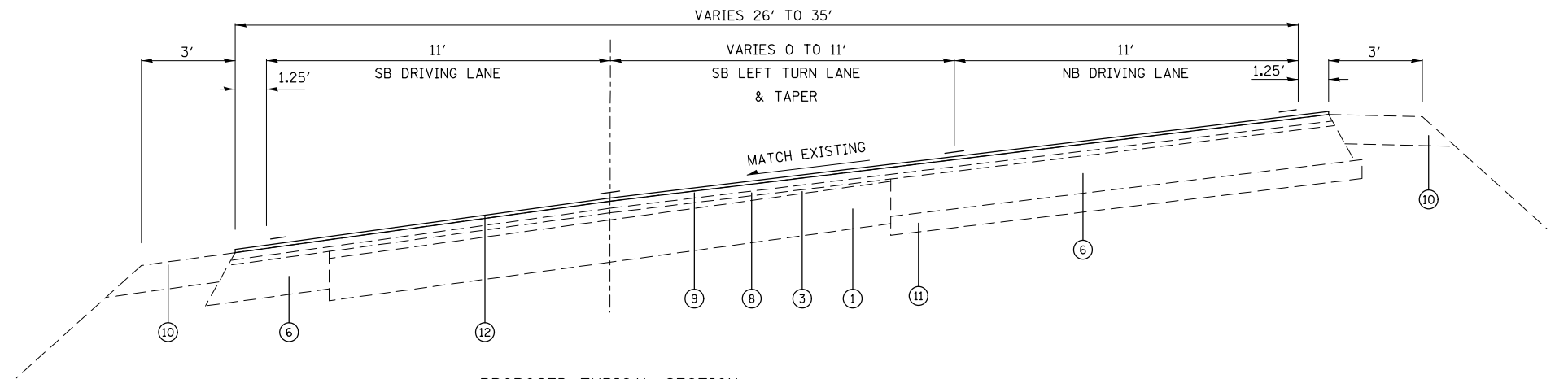
ROUTE	SECTION	COUNTY	TOTAL SHEETS	SHEET NO.
*	101-IRS-2	JERSEY	14	5
*FAP 304/FAS 749			CONTRACT NO. 76H74	
ILLINOIS FED. AID PROJECT				



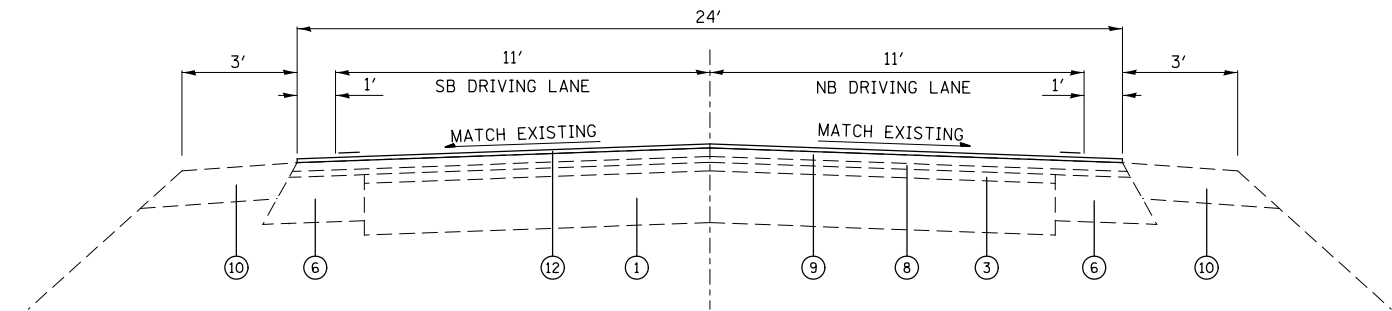
PROPOSED TYPICAL SECTION
MILE 9.26 TO MILE 10.97



PROPOSED TYPICAL SECTION
MILE 9.07 TO MILE 9.08



PROPOSED TYPICAL SECTION
MILE 9.06 TO MILE 9.25



PROPOSED TYPICAL SECTION
MILE 9.25 TO MILE 9.26

LEGEND (THIS SHEET ONLY)

- ① EXISTING PCC PAVEMENT, 9"
- ② EXISTING BITUMINOUS WIDENING, 6 1/2" or 7 3/4"
- ③ EXISTING BITUMINOUS RESURFACING, VARIES
- ④ EXISTING AGGREGATE SHOULDERS TYPE B, WEDGE
- ⑤ EXISTING CONCRETE GUTTER, TYPE B
- ⑥ EXISTING BITUMINOUS BASE COURSE SUPERPAVE, 9"
- ⑦ EXISTING COMBINATION CONCRETE CURB AND GUTTER, (SPECIAL)
- ⑧ EXISTING LEVELING BINDER (MACHINE METHOD) SUPERPAVE N70, 3/4"
- ⑨ EXISTING BITUMINOUS CONCRETE SURFACE COURSE, SUPERPAVE, MIX"D". N70, 1 1/2"
- ⑩ EXISTING AGGREGATE SHOULDER, TYPE A 6"
- ⑪ EXISTING GRANULAR SUBBASE MATERIAL, TYPE A 4"
- ⑫ PROPOSED CAPE SEAL

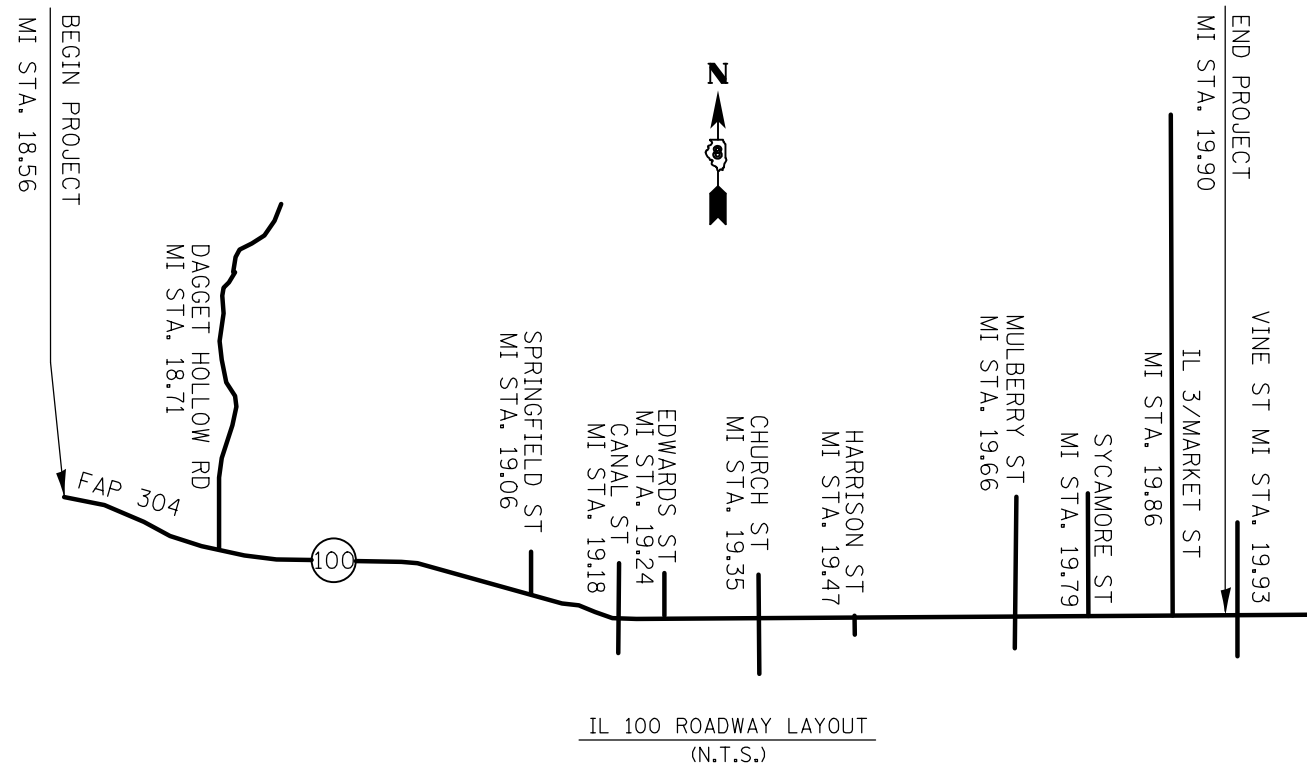
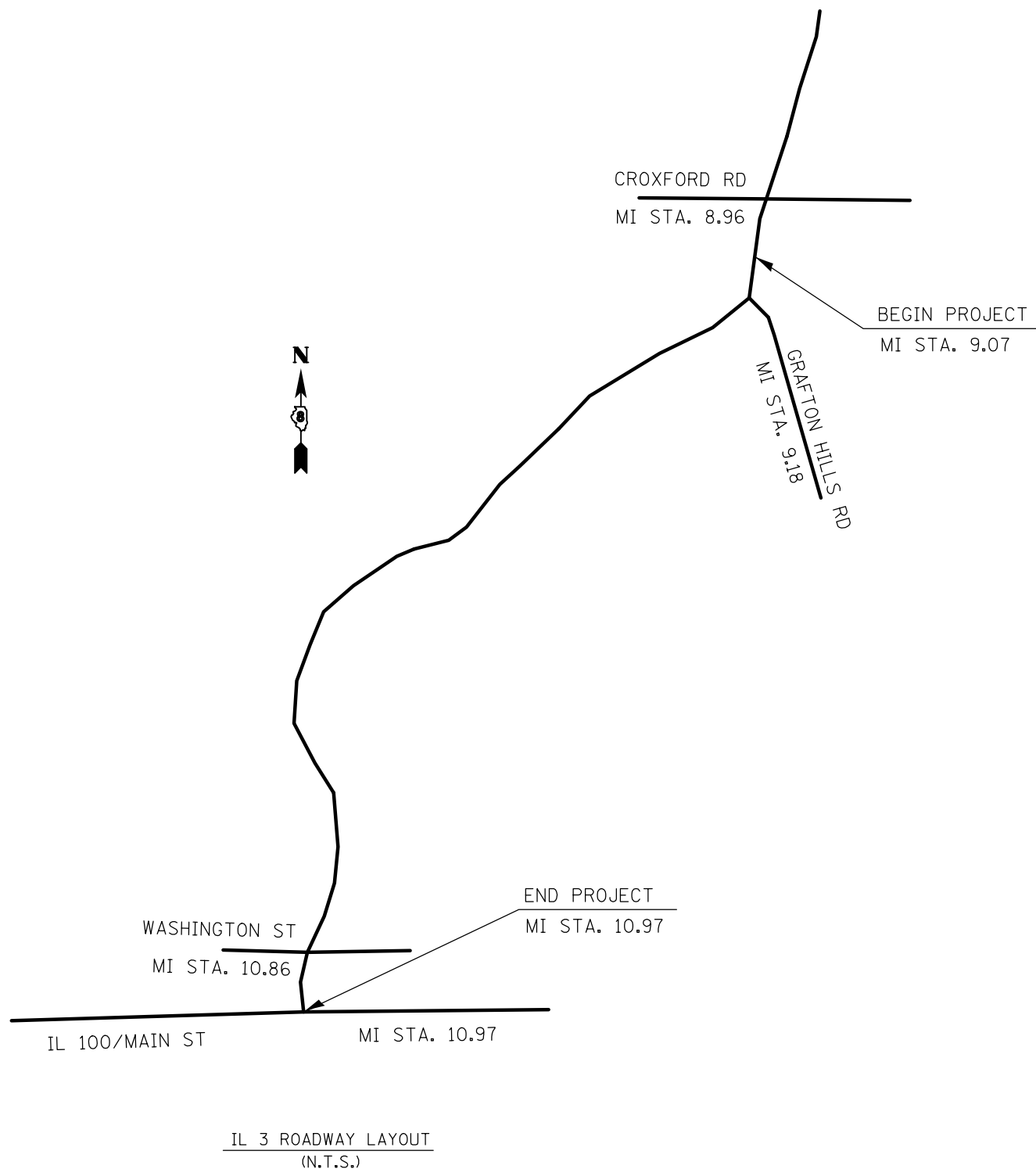
FILE NAME =	USER NAME = wedmore_jb	DESIGNED -	REVISED -
et:\pw\work\p1dot\wedmore_jb\d0419865\d876h74-sh-t-plan.dgn		DRAWN -	REVISED -
	PLOT SCALE = 100.0000' / 1in.	CHECKED -	REVISED -
	PLOT DATE = 3/26/2015	DATE -	REVISED -

STATE OF ILLINOIS
DEPARTMENT OF TRANSPORTATION

IL 3 TYPICAL SECTIONS

SCALE: SHEET OF SHEETS STA. TO STA.

ROUTE	SECTION	COUNTY	TOTAL SHEETS	SHEET NO.
*	101-IRS-2	JERSEY	14	6
*FAP 304/FAS 749			CONTRACT NO. 76H74	
ILLINOIS FED. AID PROJECT				



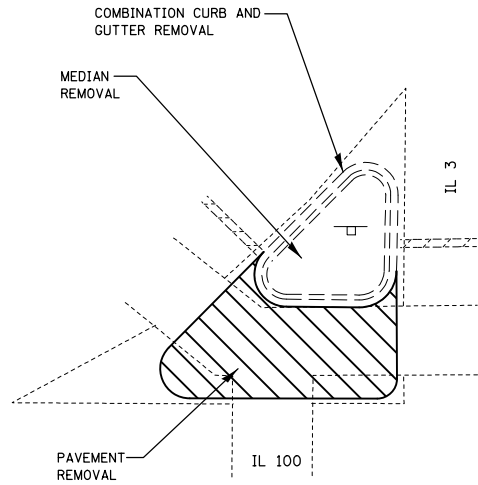
FILE NAME =	USER NAME = wedmore JB	DESIGNED -	REVISED -
et:\pw\work\p\dot\wedmore JB\d0419865\d876h74-sh-t-plan.dgn		DRAWN -	REVISED -
	PLOT SCALE = 100.0000' / in.	CHECKED -	REVISED -
	PLOT DATE = 3/26/2015	DATE -	REVISED -

**STATE OF ILLINOIS
DEPARTMENT OF TRANSPORTATION**

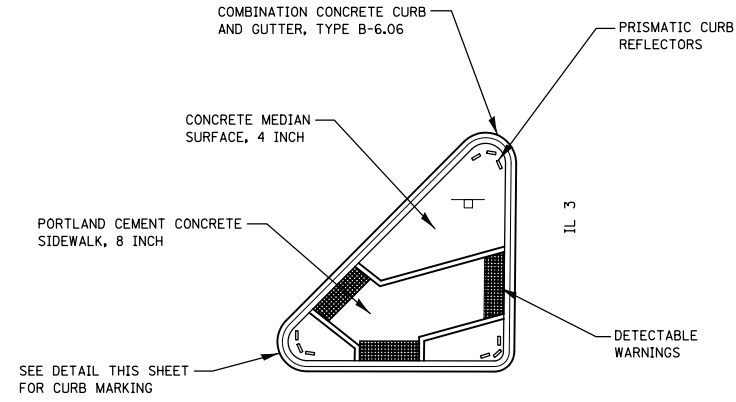
ROADWAY LAYOUTS

SCALE: SHEET OF SHEETS STA. TO STA.

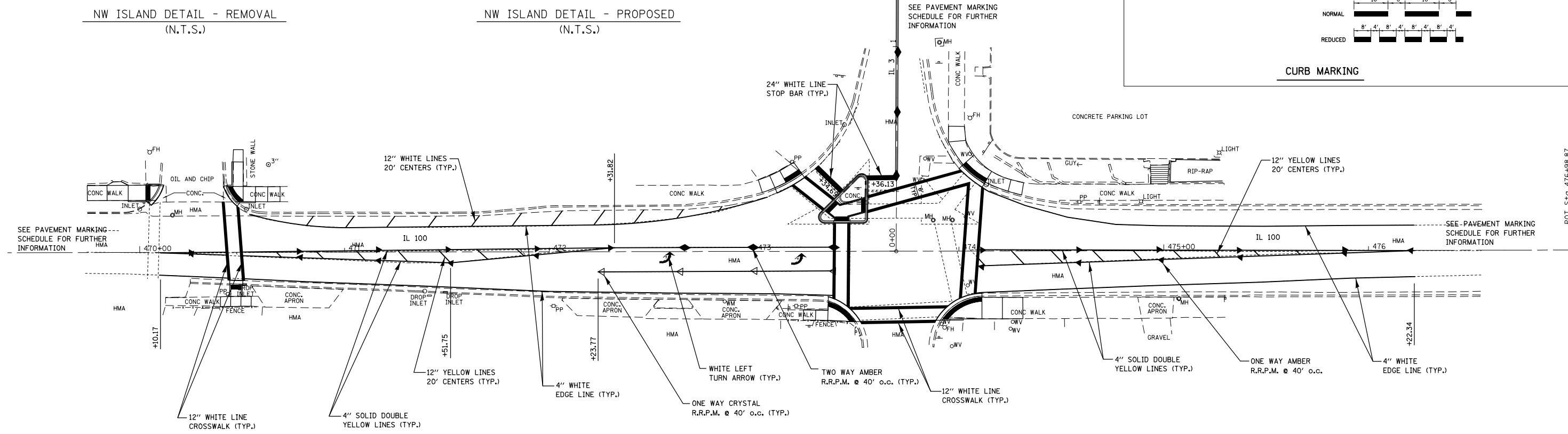
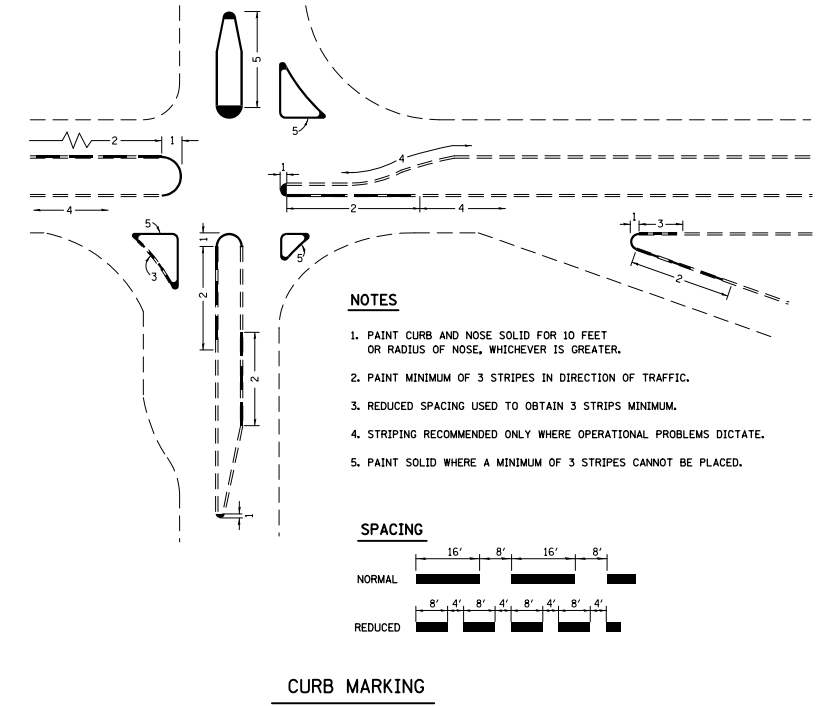
ROUTE	SECTION	COUNTY	TOTAL SHEETS	SHEET NO.
*	101-IRS-2	JERSEY	14	8
*FAP 304/FAS 749			CONTRACT NO. 76H74	
ILLINOIS FED. AID PROJECT				



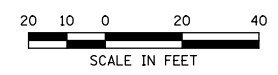
NW ISLAND DETAIL - REMOVAL
(N.T.S.)



NW ISLAND DETAIL - PROPOSED
(N.T.S.)

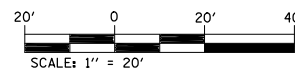
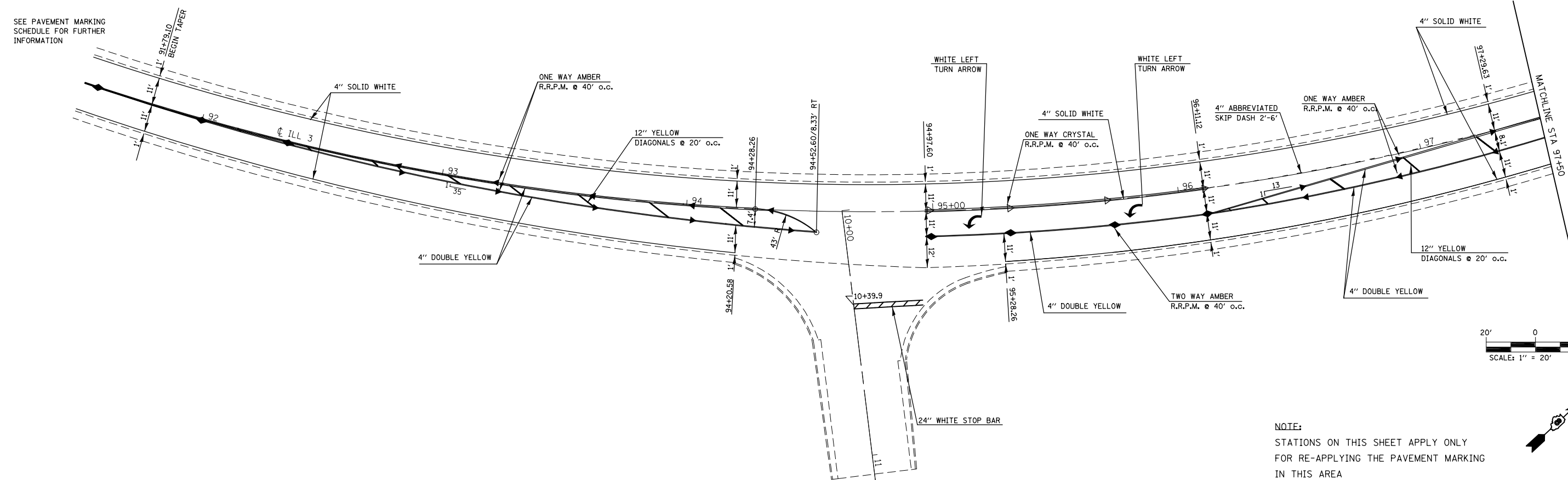
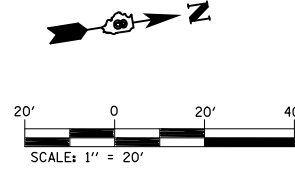
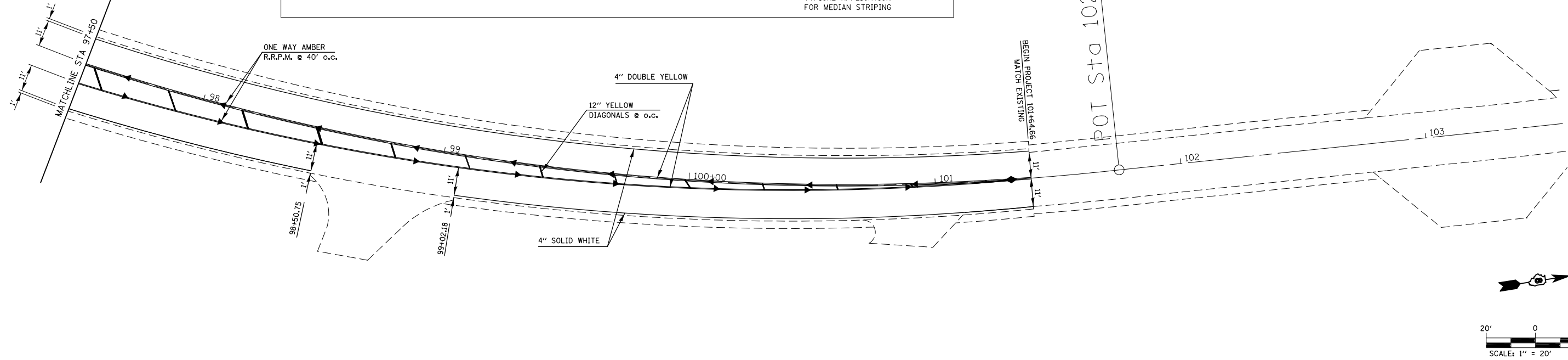
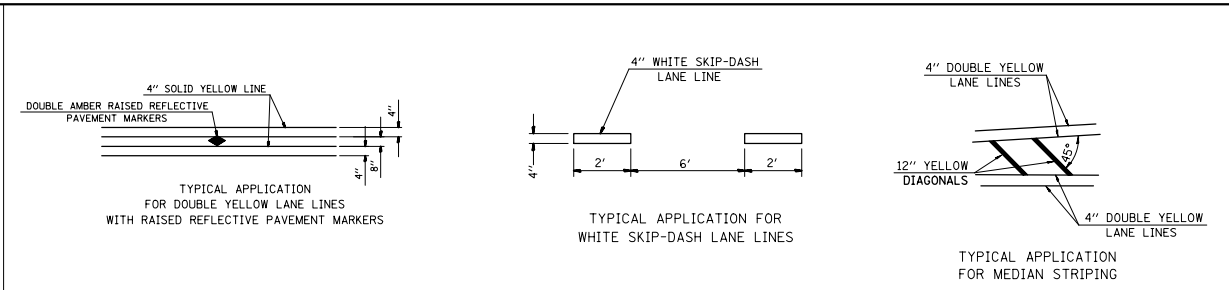


POT Stg. 476+98.87



NOTE:
STATIONS ON THIS SHEET APPLY ONLY FOR RE-APPLYING THE PAVEMENT MARKING IN THIS AREA

FILE NAME = e:\pw_work\p1dot\wedmore_jb\d0419865\d876h74-sh-t-plan.dgn	USER NAME = wedmore_jb	DESIGNED -	REVISED -	STATE OF ILLINOIS DEPARTMENT OF TRANSPORTATION	PAVEMENT MARKING DETAILS				ROUTE	SECTION	COUNTY	TOTAL SHEETS	SHEET NO.		
	PLOT SCALE = 100.0000' / 1"	DRAWN -	REVISED -		SCALE:	SHEET	OF	SHEETS	STA.	TO	STA.	* 101-IRS-2	JERSEY	14	9
	PLOT DATE = 3/26/2015	CHECKED -	REVISED -									* FAP 304/FAS 749	CONTRACT NO. 76H74		
		DATE -	REVISED -									ILLINOIS FED. AID PROJECT			



NOTE:
STATIONS ON THIS SHEET APPLY ONLY
FOR RE-APPLYING THE PAVEMENT MARKING
IN THIS AREA

FILE NAME =	USER NAME = wedmore_jb	DESIGNED -	REVISED -
et:\pw\work\p\dot\wedmore_jb\d0419865\d876h74-sh-t-plan.dgn		DRAWN -	REVISED -
	PLOT SCALE = 100.0000' / in.	CHECKED -	REVISED -
	PLOT DATE = 3/26/2015	DATE -	REVISED -

**STATE OF ILLINOIS
DEPARTMENT OF TRANSPORTATION**

PAVEMENT MARKING DETAILS

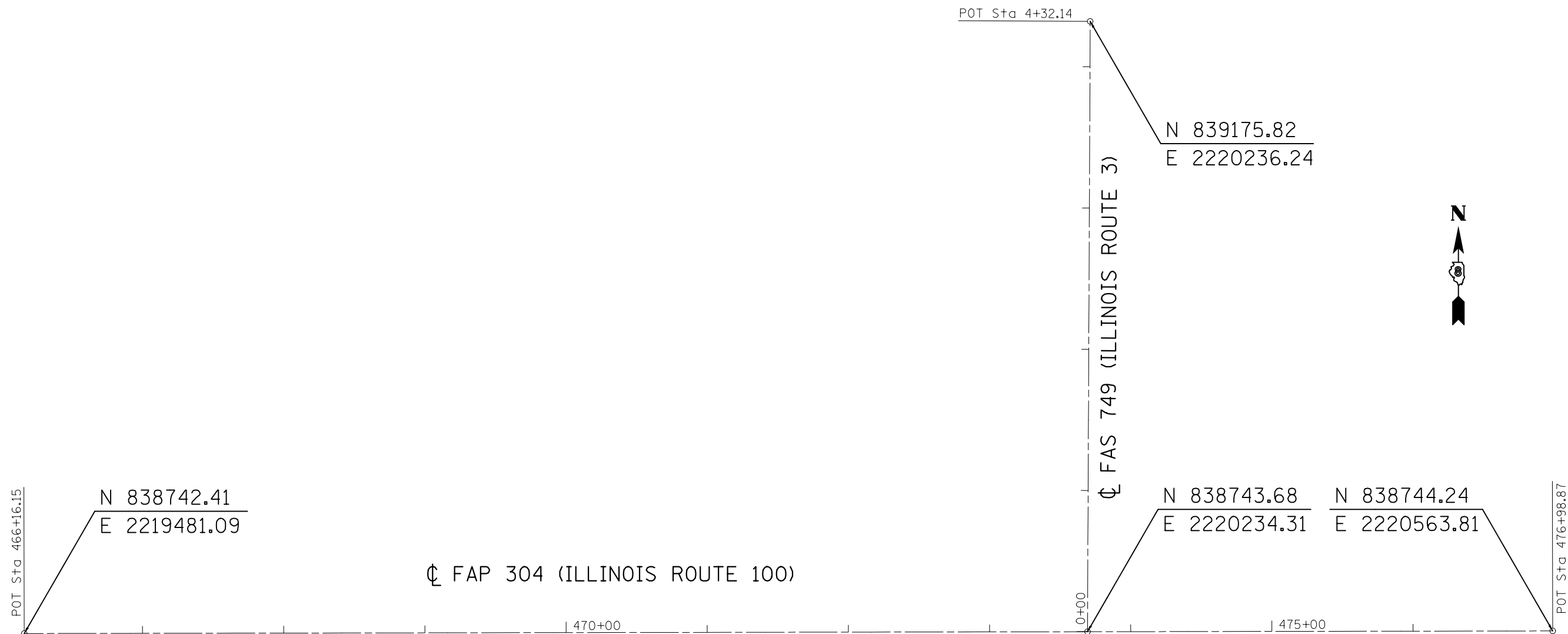
SCALE: SHEET OF SHEETS STA. TO STA.

ROUTE	SECTION	COUNTY	TOTAL SHEETS	SHEET NO.
* 101-IRS-2		JERSEY	14	10
*FAP 304/FAS 749		CONTRACT NO. 76H74		

ILLINOIS FED. AID PROJECT

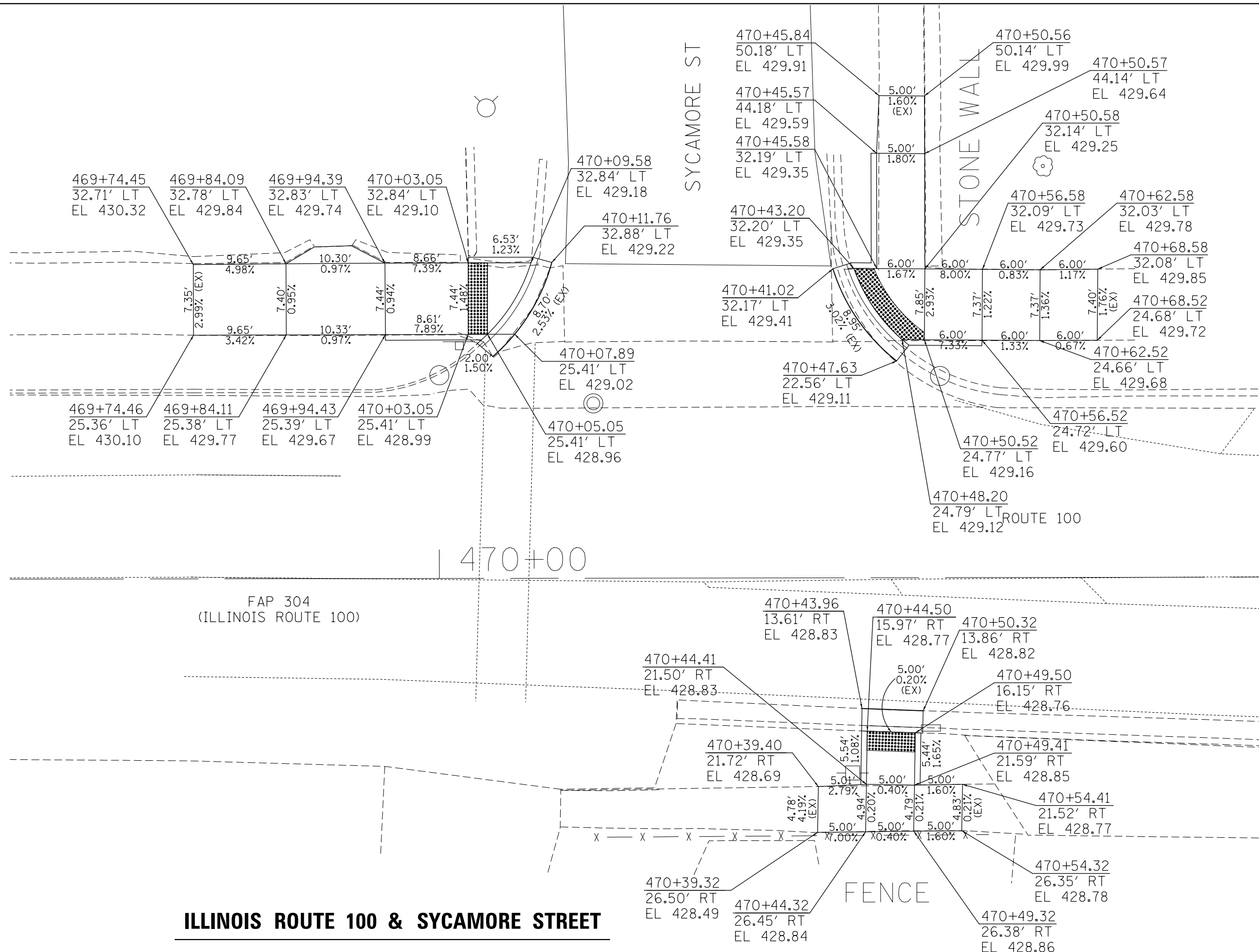
ADA CURB RAMP

LOCATION		PORTLAND CEMENT CONCRETE SIDEWALK		DETECTABLE WARNINGS	PAVEMENT REMOVAL	COMBINATION CURB AND GUTTER REMOVAL	SIDEWALK REMOVAL	MEDIAN REMOVAL	COMBINATION CONCRETE CURB AND GUTTER		CONCRETE MEDIAN SURFACE, 4 INCH	PAINT CURB
		4 INCH	8 INCH						TYPE B-6.06	TYPE B-6.24		
		SQ FT	SQ FT						SQ FT	SQ YD		
IL 100 & SYCAMORE	NW QUADRANT	269.5		15		11	268			11.0		
	NE QUADRANT	274.0		18		11	261			11.0		
	SOUTH SIDE	106.5		10		6	72			6.5		
IL 100 & IL 3	NW QUADRANT	124.5		17		15	129			15.0		
	NE QUADRANT	337.0		27		14	312			14.0		
	SW QUADRANT	134.0		29		16	131			17.0		
	SE QUADRANT	353.5		42		23	345			24.5		
	NW ISLAND		139.5	37	25	43		99	78.0		155	59.5
TOTAL		1599.0	139.5	195	25	139	1518	99	78.0	99.0	155	59.5



NTS

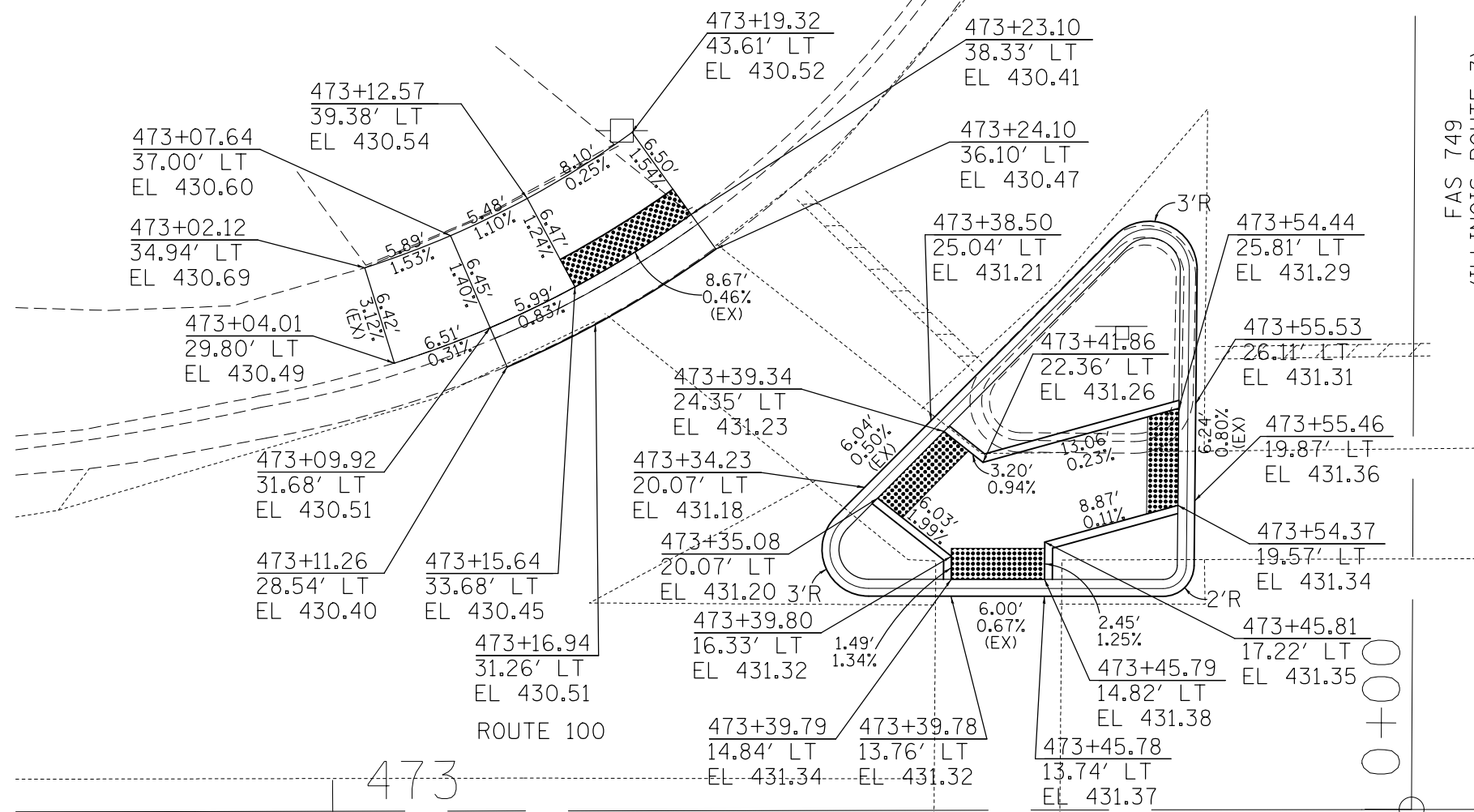
FILE NAME =	USER NAME = wedmore JB	DESIGNED -	REVISED -	STATE OF ILLINOIS DEPARTMENT OF TRANSPORTATION	CROSSWALK AND ADA RAMP DETAILS	ROUTE	SECTION	COUNTY	TOTAL SHEETS	SHEET NO.	
	et:\pw\work\p\dot\wedmore JB\d0419865\d876h74-sh-t-plan.dgn	DRAWN -	REVISED -			*	101-IRS-2	JERSEY	14	11	
	PLOT SCALE = 80.0000' / in.	CHECKED -	REVISED -			*FAP 304/FAS 749	CONTRACT NO. 76H74				
	PLOT DATE = 3/26/2015	DATE -	REVISED -			ILLINOIS FED. AID PROJECT					
				SCALE:		SHEET OF SHEETS		STA. TO STA.			



ILLINOIS ROUTE 100 & SYCAMORE STREET

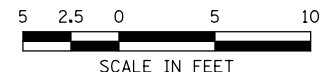
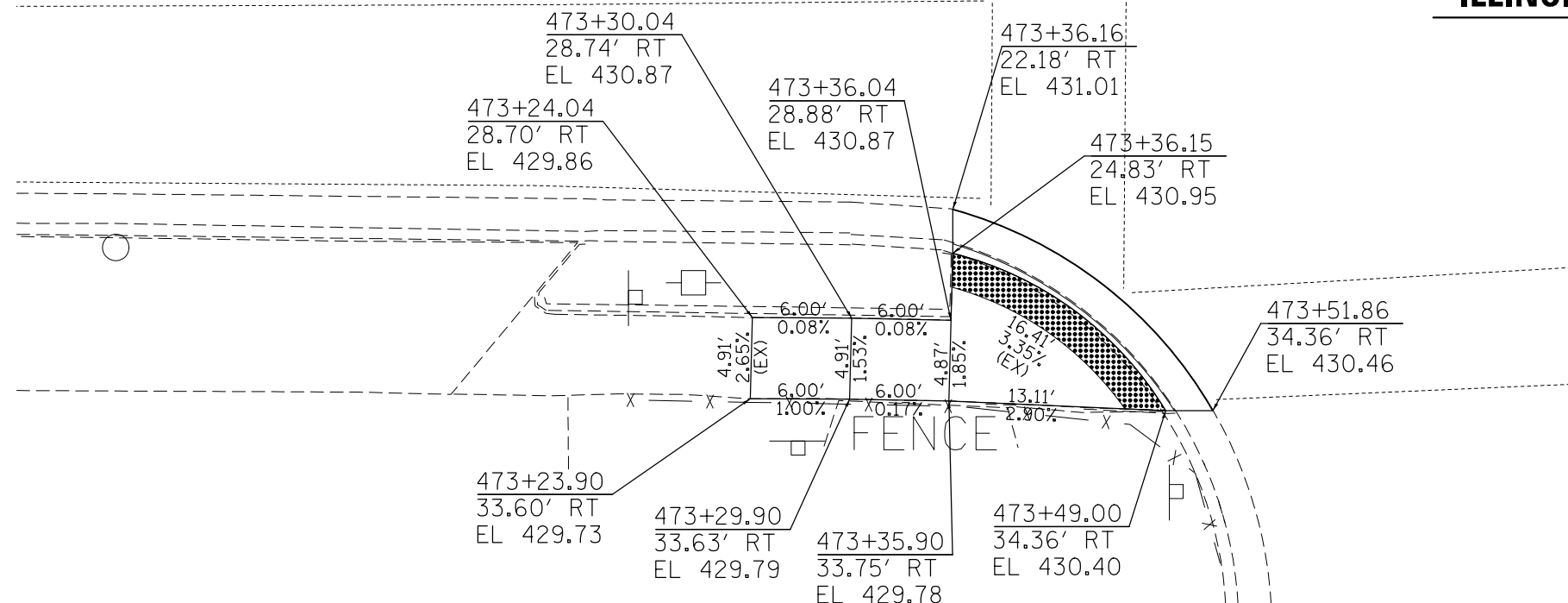


FILE NAME = c:\pwwork\pwwork\wedmore\j\0419865\d876h74-sh-t-plan.dgn	USER NAME = wedmore_jb	DESIGNED -	REVISED -	STATE OF ILLINOIS DEPARTMENT OF TRANSPORTATION	CROSSWALK AND ADA RAMP DETAILS	ROUTE	SECTION	COUNTY	TOTAL SHEETS	SHEET NO.						
PLOT SCALE = 10.0000' / 1"	CHECKED -	REVISED -	SCALE:			SHEET	OF	SHEETS	STA.	TO	STA.	*	101-IRS-2	JERSEY	14	12
PLOT DATE = 3/26/2015	DATE -	REVISED -											*FAP 304/FAS 749			CONTRACT NO. 76H74
														ILLINOIS	FED. AID	PROJECT

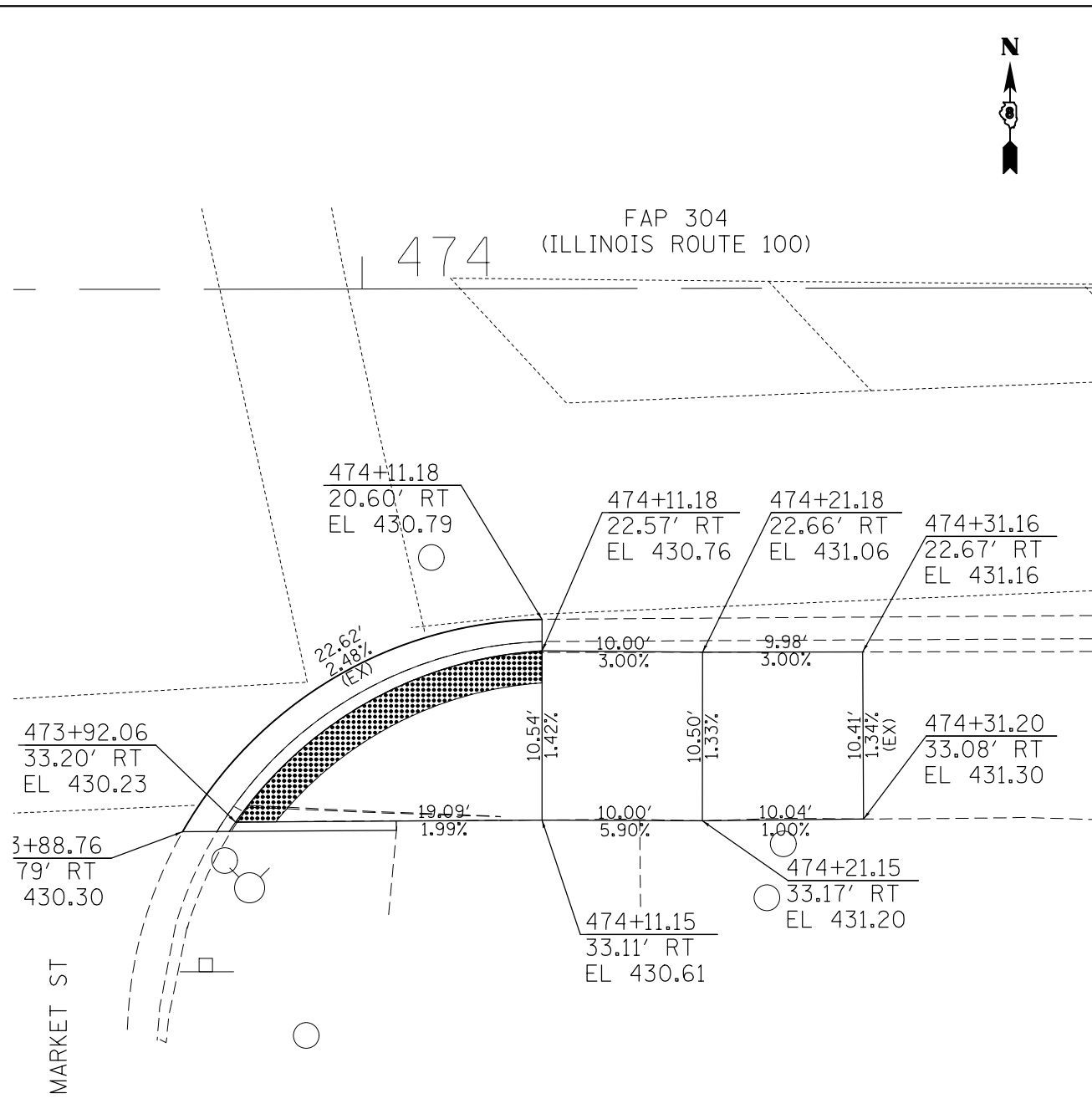
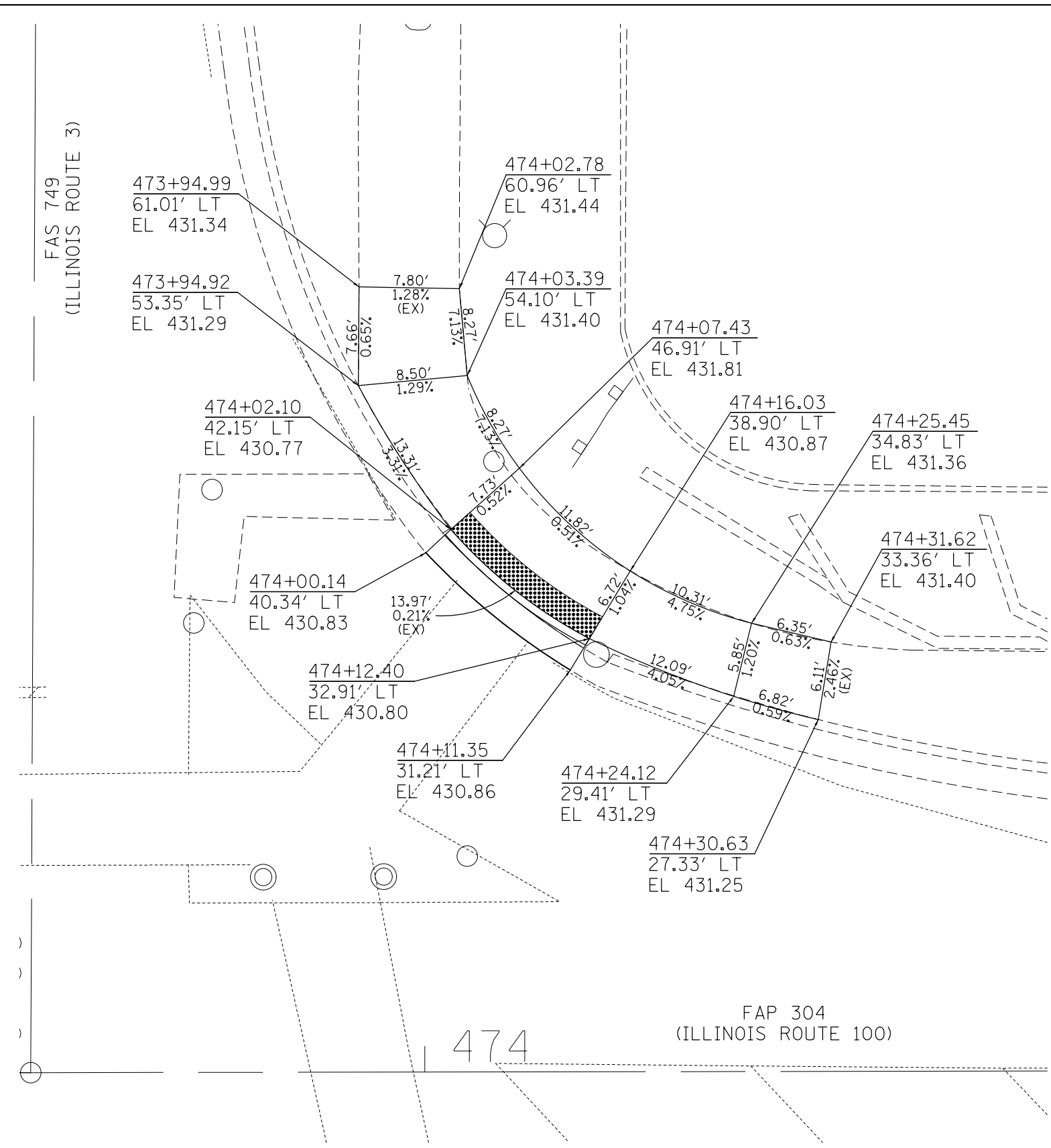


FAP 304
(ILLINOIS ROUTE 100)

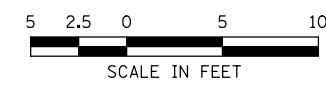
ILLINOIS ROUTE 100 & ILLINOIS ROUTE 3 WEST QUADRANTS



FILE NAME =	USER NAME = wedmore JB	DESIGNED -	REVISED -	STATE OF ILLINOIS DEPARTMENT OF TRANSPORTATION	CROSSWALK AND ADA RAMP DETAILS				ROUTE	SECTION	COUNTY	TOTAL SHEETS	SHEET NO.
et:\pwork\pwork\wedmore JB\d0419865\d876h74-sh-t-plan.dgn		DRAWN -	REVISED -						*	101-IRS-2	JERSEY	14	13
	PLOT SCALE = 10.0000' / in.	CHECKED -	REVISED -		*FAP 304/FAS 749				CONTRACT NO. 76H74				
	PLOT DATE = 3/26/2015	DATE -	REVISED -		SCALE:	SHEET	OF	SHEETS	STA.	TO	STA.	ILLINOIS FED. AID PROJECT	



**ILLINOIS ROUTE 100 & ILLINOIS ROUTE 3
EAST QUADRANTS**



FILE NAME = c:\pwwork\pwwork\wedmore_jb\d0419865\d876h74-sh-t-plan.dgn	USER NAME = wedmore_jb	DESIGNED - DRAWN -	REVISED - REVISED -	STATE OF ILLINOIS DEPARTMENT OF TRANSPORTATION	CROSSWALK AND ADA RAMP DETAILS				ROUTE *	SECTION 101-IRS-2	COUNTY JERSEY	TOTAL SHEETS 14	SHEET NO. 14
PLOT SCALE = 10.0000' / in.	CHECKED -	REVISED -	REVISED -						SCALE:	SHEET	OF	SHEETS	STA.
PLOT DATE = 3/26/2015	DATE -	REVISED -	REVISED -										