

F.A.U. RTE.	SECTION	COUNTY	TOTAL SHEETS	SHEET NO.
1552	14-00050-00-SW	COOK	23	1
FEDERAL RD. DIST. NO.		ILLINOIS	CONTRACT NO. 61B38	

23+4 = 27

FOR INDEX OF SHEETS, SEE SHEET NO. 2

FOR LIST OF STATE AND LOCAL STANDARDS, SEE SHEET NO. 2

PROJECT LOCATED WITHIN THE VILLAGE OF BURR RIDGE

TRAFFIC DATA - GERMAN CHURCH ROAD  
 POSTED SPEED: 40 MPH  
 CURRENT ADT (2010): 4,400 VPD  
 FUNCTIONAL CLASS: MINOR ARTERIAL

DESIGN DESIGNATION  
 SIDEWALK

STATE OF ILLINOIS  
 DEPARTMENT OF TRANSPORTATION  
 DIVISION OF HIGHWAYS

# PLANS FOR PROPOSED FEDERAL AID PROJECT

FAU ROUTE 1552 (GERMAN CHURCH ROAD)  
 S COUNTY LINE ROAD TO GREYSTONE COURT  
 PEDESTRIAN IMPROVEMENTS PROJECT  
 SECTION NO.: 14-00050-00-SW  
 PROJECT NO.: M-4003 (422)  
 VILLAGE OF BURR RIDGE  
 COOK COUNTY

JOB NO.: C-91-139-15



LOCATION OF SECTION INDICATED THIS: - [Symbol]

STATE OF ILLINOIS  
 DEPARTMENT OF TRANSPORTATION  
 DIVISION OF HIGHWAYS

Approved PAUL D. MAY P.E. 2/20/15

*[Signature]*  
 Village of Burr Ridge, Director of Public Works

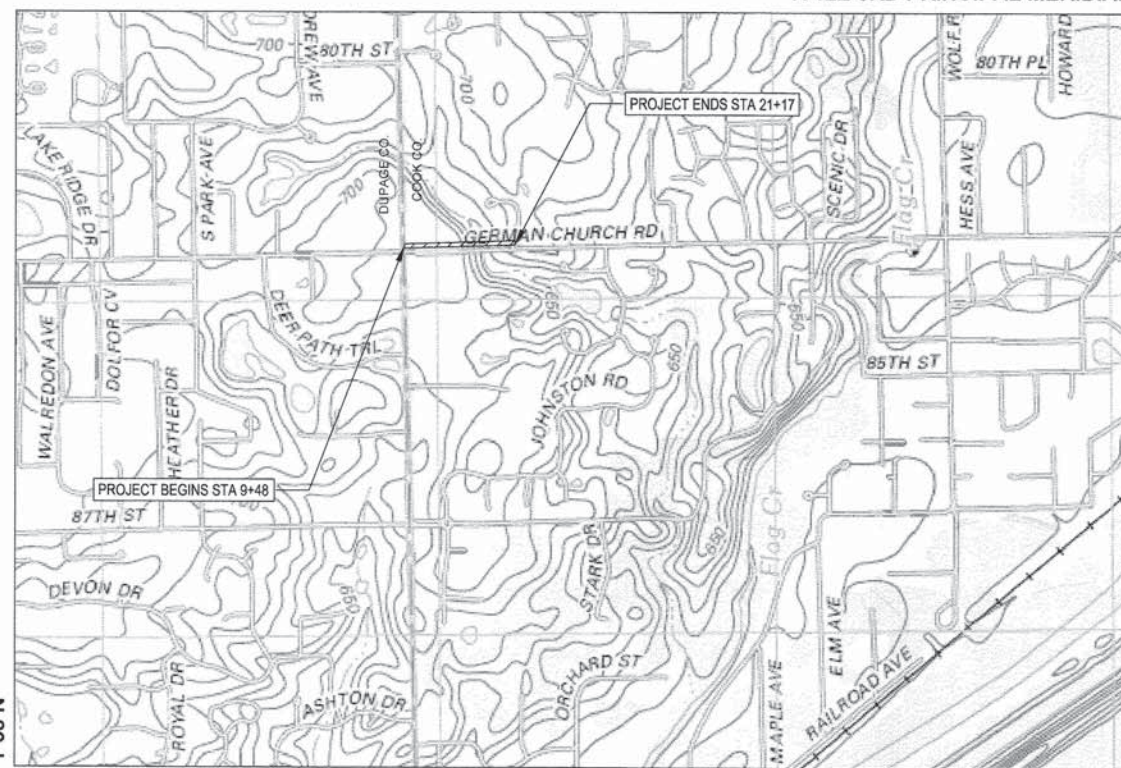
Passed APRIL 1, 2015

*[Signature]* CHRISTOPHER HOLT  
 District 1 Engineer of Local Roads & Streets

Releasing for Bid  
 Based on Limited Review

APRIL 1, 2015  
*[Signature]*  
 Deputy Director of Highways, Region 1 Engineer

R 12E 3RD PRINCIPAL MERIDIAN



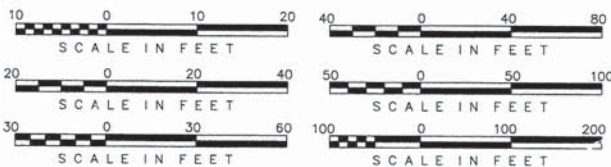
T 38 N

LYONS TOWNSHIP

## LOCATION MAP

LYONS TOWNSHIP  
 TOWNSHIP: 38N  
 RANGE: 12E

GROSS LENGTH OF PROJECT = 1200 FEET (0.23 MILES)  
 NET LENGTH OF PROJECT = 1200 FEET (0.23 MILES)

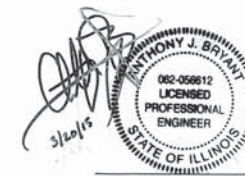


FULL SIZE PLANS HAVE BEEN PREPARED USING STANDARD ENGINEERING SCALES, REDUCED SIZED PLANS WILL NOT CONFORM TO STANDARD SCALES, IN MAKING MEASUREMENTS ON REDUCED PLANS, THE ABOVE SCALES MAY BE USED.

J.U.L.I.E.  
 JOINT UTILITY LOCATION INFORMATION FOR EXCAVATION  
 1-800-892-0123  
 OR 811

FEDERAL AID PROGRAM ENGINEER: FAWAD AQUEEL PE, PTOE (847) 705-4021 - SCHAUMBURG, IL

CONTRACT NO. 61B38



ANTHONY J. BRYANT, P.E.  
 NO. 082-056612  
 EXP. DATE: 11/30/2015  
 ALL SHEETS EXCEPT NO. 17



JEFFREY A. RUHDE, S.E.  
 NO. 081-005613  
 EXP. DATE: 11/30/2016  
 SHEET NO. 17

PRINTED BY THE AUTHORITY OF THE STATE OF ILLINOIS



CODE NO.	ITEM	UNIT	TOTAL QUANTITY	CONSTRUCTION CODE	
				STP FUNDS	
				75% FED. 25% LOCAL (BURR RIDGE)	
20100110	TREE REMOVAL (8 TO 15 UNITS DIAMETER)	UNIT	380	380	
20100210	TREE REMOVAL (OVER 15 UNITS DIAMETER)	UNIT	182	182	
* Δ 20101200	TREE ROOT PRUNING	EACH	15	15	
Δ 20101300	TREE PRUNING (1 TO 10 INCH DIAMETER)	EACH	9	9	
Δ 20101350	TREE PRUNING (OVER 10 INCH DIAMETER)	EACH	6	6	
20200100	EARTH EXCAVATION	CU YD	1258	1258	
20201200	REMOVAL AND DISPOSAL OF UNSUITABLE MATERIAL	CU YD	197	197	
20400800	FURNISHED EXCAVATION	CU YD	318	318	
20900110	POROUS GRANULAR BACKFILL	CU YD	165	165	
21101615	TOPSOIL FURNISH AND PLACE, 4"	SQ YD	2278	2278	
Δ 25000400	NITROGEN FERTILIZER NUTRIENT	POUND	42	42	
Δ 25000500	PHOSPHORUS FERTILIZER NUTRIENT	POUND	42	42	
Δ 25000600	POTASSIUM FERTILIZER NUTRIENT	POUND	42	42	
Δ 25100930	EROSION CONTROL BLANKET	SQ YD	2014	2014	
Δ 25200110	SOODING, SALT TOLERANT	SQ YD	2278	2278	
28000400	PERIMETER EROSION BARRIER	FOOT	342	342	
28000510	INLET FILTERS	EACH	6	6	
28100127	STONE RIPRAP, CLASS B4	SQ YD	40	40	
35101600	AGGREGATE BASE COURSE, TYPE B 4"	SQ YD	590	590	
* 42400200	PORTLAND CEMENT CONCRETE SIDEWALKS INCH	SQ FT	5310	5310	
* 42400800	DETECTABLE WARNING	SQ FT	32	32	
44000100	PAVEMENT REMOVAL	SQ YD	37	37	
44000200	DRIVEWAY PAVEMENT REMOVAL	SQ YD	41	41	
44000500	COMBINATION CURB & GUTTER REMOVAL	FOOT	20	20	
44000600	SIDEWALK REMOVAL	SQ FT	50	50	
44201765	CLASS D PATCHES, TYPE II, 10 INCH	SQ YD	37	37	
50200100	STRUCTURE EXCAVATION	CU YD	414	414	
50300225	CONCRETE STRUCTURES	CU YD	112	112	
50800205	REINFORCEMENT BARS, EPOXY COATED	POUND	14741	14741	
54213657	PRECAST REINFORCED CONCRETE FLARED END SECTIONS 12"	EACH	2	2	
550A0340	STORM SEWERS, CLASS A, TYPE 2, 12"	FOOT	497	497	
59100100	GEOCOMPOSITE WALL DRAIN	SQ YD	200	200	

CODE NO.	ITEM	UNIT	TOTAL QUANTITY	CONSTRUCTION CODE	
				STP FUNDS	
				75% FED. 25% LOCAL (BURR RIDGE)	
* 60200105	CATCH BASINS, TYPE A, 4' DIAMETER, TYPE 1 FRAME, OPEN LID	EACH	2	2	
60234200	INLETS, TYPE A, TYPE 1 FRAME, OPEN LID	EACH	2	2	
* 60600605	CONCRETE CURB, TYPE B	FOOT	125	125	
60603800	COMBINATION CONCRETE CURB AND GUTTER, TYPE B-6.12	FOOT	20	20	
63200310	GUARDRAIL REMOVAL	FOOT	137	137	
67100100	MOBILIZATION	L SUM	1	1	
Δ 78001110	PAINT PAVEMENT MARKING - LINE 4"	FOOT	18	18	
Δ 78001130	PAINT PAVEMENT MARKING - LINE 6"	FOOT	90	90	
Δ 78001150	PAINT PAVEMENT MARKING - LINE 12"	FOOT	96	96	
Δ 78001180	PAINT PAVEMENT MARKING - LINE 24"	FOOT	15	15	
Δ 85000200	MAINTENANCE OF EXISTING TRAFFIC SIGNAL INSTALLATION	EACH	1	1	
Δ 89502376	REBUILD EXISTING HANDHOLE	EACH	1	1	
Δ A2C02501	TREE, CERCIIS CANADENSIS (REDBUD), 1" CALIPER, CONTAINER GROWN	EACH	7	7	
Δ B2002222	TREE, CRATAEGUS VIRDIS WINTER KING (WINTER KING GREEN HAWTHORN), 3" CALIPER, BALLED AND BURLAPPED	EACH	4	4	
Δ C2005615	SHRUB, RHUS AROMATICA GRO-LOW (GRO-LOW FRAGRANT SUMAC), 15" WIDTH, BALLED AND BURLAPPED	EACH	100	100	
Δ F30098Y2	SEEDLING-OSTRYA VIRGINIANA (AMERICANHOPHORNBEAM), 2-YEAR OLD, BARE ROOT	Unit	0.01	0.01	
Δ F30130G3	SEEDLING-QUERCUS BICOLOR (SWAMP WHITE OAK), 3-GALLON CONTAINER	EACH	4	4	
Δ F30160Y2	SEEDLING-QUERCUS RUBRA (RED OAK), 2-YEAR OLD, BARE ROOT	Unit	0.04	0.04	
* X0324450	SEGMENTAL CONCRETE BLOCK WALL, SPECIAL	SQ FT	1059	1059	
* Δ X5090810	PEDESTRIAN RAIL (SPECIAL)	FOOT	195	195	
* X7010216	TRAFFIC CONTROL AND PROTECTION, (SPECIAL)	L SUM	1	1	
* Δ XX006858	RAILING	FOOT	118	118	
Z0013798	CONSTRUCTION LAYOUT	L SUM	1	1	
* Z0046304	PIPE UNDERDRAINS FOR STRUCTURES 4"	FOOT	200	200	
Z0073002	TEMPORARY SOIL RETENTION SYSTEM	SQ FT	1755	1755	
* X1003668	PRECONSTRUCTION VIDEOTAPING **	L SUM	1		

\* SPECIAL PROVISION  
 \*\* 100% Local Funds Δ SPECIALTY ITEMS

DESIGNED -- AJB	REVISED -- 06/04/2015
DRAWN -- TRD	REVISED --
CHECKED -- MAP	REVISED --
DATE -- 01/28/2015	REVISED --

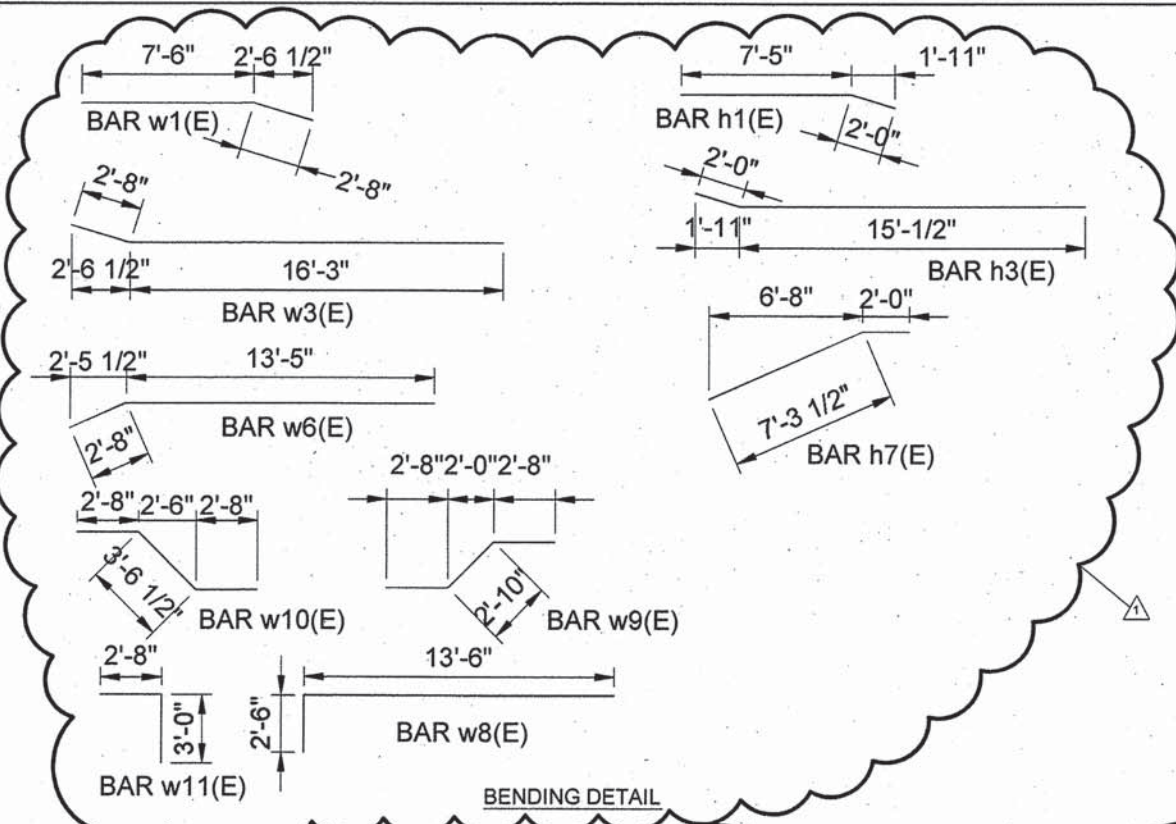
STATE OF ILLINOIS  
 DEPARTMENT OF TRANSPORTATION

SUMMARY OF QUANTITIES

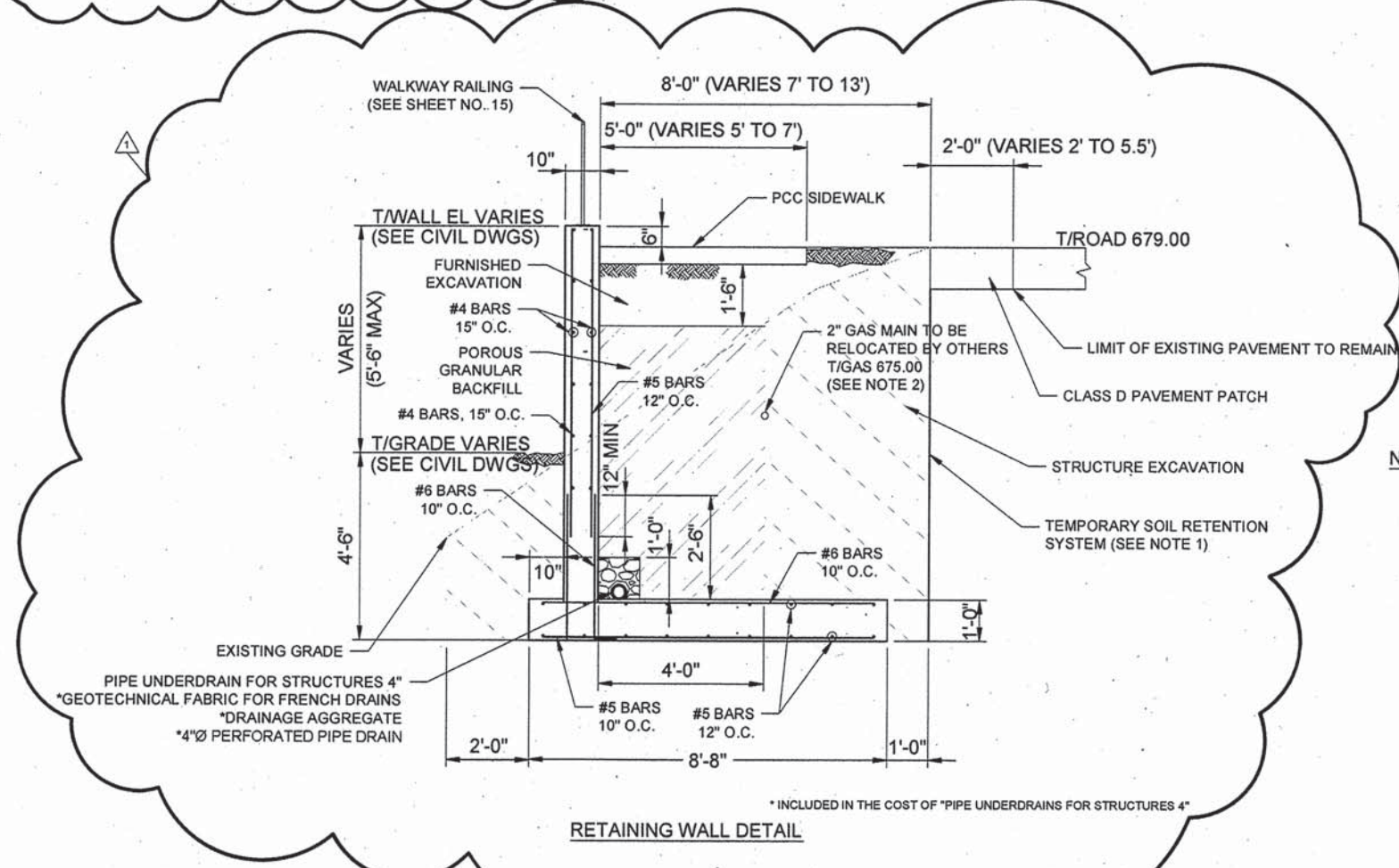
SCALE: NONE SHEET 1 OF 1 SHEETS STA. TO STA.

F.A.U. RTE.	SECTION	COUNTY	TOTAL SHEETS	SHEET NO.
1552	14-00050-00-SW	COOK	23	3
GERMAN CHURCH ROAD PED IMPROVEMENT			CONTRACT NO. 61B38	
FED. ROAD DIST. NO. 1 ILLINOIS FED. AID PROJECT				

	Size	Bar List Length	Quantity	Weight
t <sub>1</sub> (E)	6	8.17	246	3018
t <sub>2</sub> (E)	5	8.17	246	2095
w1(E)	5	10.17	16	170
w2(E)	5	19.67	16	328
w3(E)	5	18.92	16	316
w4(E)	5	29.67	16	495
w5(E)	5	32.17	32	1074
w6(E)	5	16.08	32	537
w7(E)	5	13.50	8	113
w8(E)	5	16.00	8	134
w9(E)	5	8.17	8	68
w10(E)	5	8.92	8	74
w11(E)	5	5.67	8	47
w12(E)	5	21.25	16	355
n1(E)	6	4.33	240	1562
n2(E)	4	3.25	160	347
v1(E)	5	6.67	117	814
v2(E)	5	5.75	31	186
v3(E)	5	7.50	50	391
v4(E)	4	6.67	95	423
v5(E)	4	5.75	25	96
v6(E)	4	7.50	41	205
h1(E)	4	9.42	14	88
h2(E)	4	20.83	14	195
h3(E)	4	17.08	12	137
h4(E)	4	29.67	16	317
h5(E)	4	31.83	28	595
h6(E)	4	27.33	24	438
h7(E)	4	9.33	14	87
h8(E)	4	13.17	4	35
				14,741



BILL OF MATERIAL		
ITEM	UNIT	TOTAL
STRUCTURE EXCAVATION	CU YD	414
CONCRETE STRUCTURES	CU YD	112
REINFORCEMENT BARS, EPOXY COATED	POUND	14741
POROUS GRANULAR BACKFILL	CU YD	165
GEOCOMPOSITE WALL DRAIN	SQ YD	200
PIPE UNDERDRAINS FOR STRUCTURES 4"	FOOT	200
FURNISHED EXCAVATION	CU YD	146
TEMPORARY SOIL RETENTION SYSTEM	SQ FT	1755



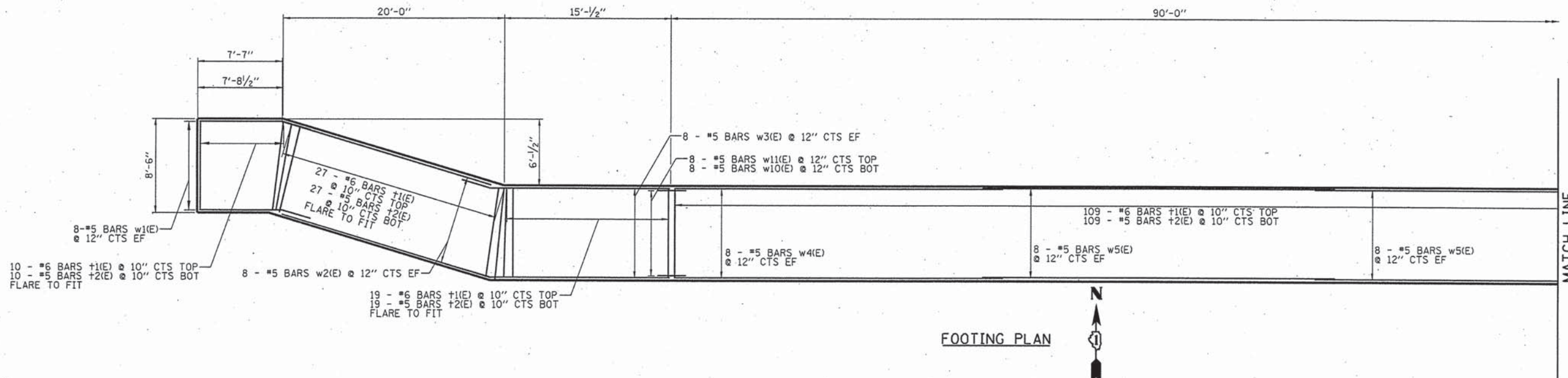
- NOTES:
- CONTRACTOR SHALL DESIGN AND PROVIDE THIS SYSTEM. REFER TO IDOT GUIDE BRIDGE SPECIAL PROVISIONS 44 (GBSP 44) INSTRUCTIONS.
  - CONTRACTOR SHALL PROVIDE TEMPORARY PROTECTION FOR ALL UNDERGROUND UTILITIES LOCATED WITHIN EXCAVATION LIMITS.

FILE NAME =	USER NAME =	DESIGNED -	AJB	REVISED -	06/02/2015
		DRAWN -	TRD	REVISED -	
	PLOT SCALE =	CHECKED -	MAP	REVISED -	
	PLOT DATE =	DATE -	01/28/2015	REVISED -	

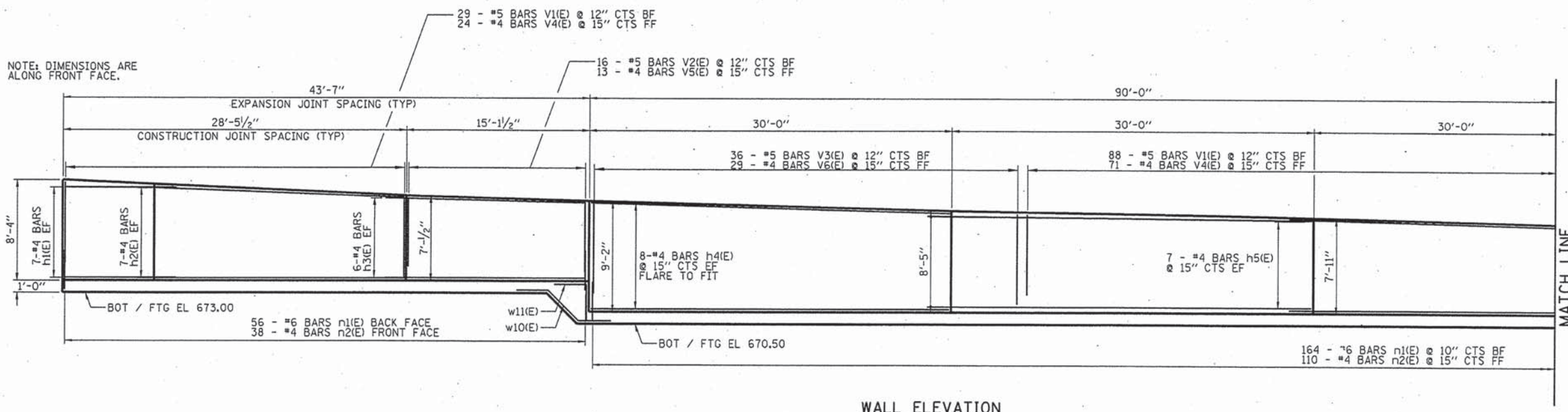
STATE OF ILLINOIS  
DEPARTMENT OF TRANSPORTATION

SCALE: NONE	SHEET 1 OF 3 SHEETS	STA. TO STA.
-------------	---------------------	--------------

F.A.U. RTE.	SECTION	COUNTY	TOTAL SHEETS	SHEET NO.
1552	14-00050-00-SW	COOK	23	17
GERMAN CHURCH ROAD FED IMPROVEMENT		CONTRACT NO. 61B38		
FED. ROAD DIST. NO. 1 ILLINOIS FED. AID PROJECT				



FOOTING PLAN



WALL ELEVATION

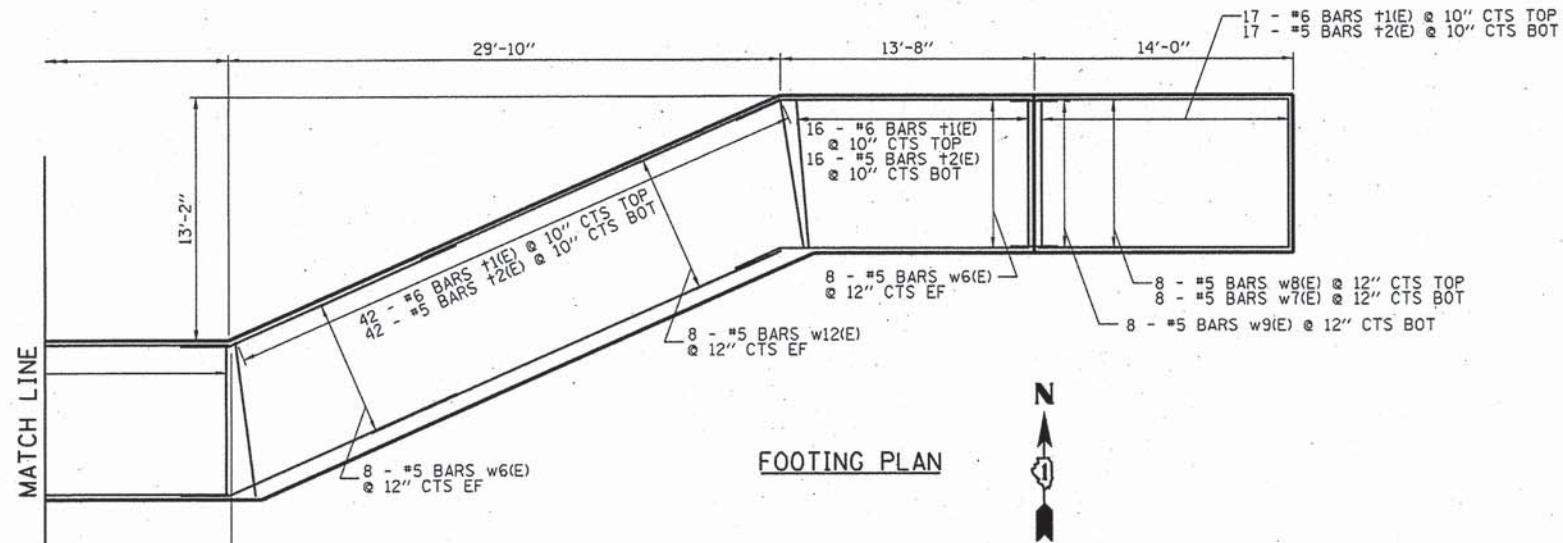
FILE NAME = 74445-shr-wall.dgn	USER NAME = mpeprnsk	DESIGNED - JAR	REVISED - <b>06/02/2015</b>
	PLOT SCALE = 5.0000' / 1"	DRAWN - MAP	REVISED -
	PLOT DATE = 6/2/2015	CHECKED - JAR	REVISED -
		DATE -	REVISED -

STATE OF ILLINOIS  
DEPARTMENT OF TRANSPORTATION

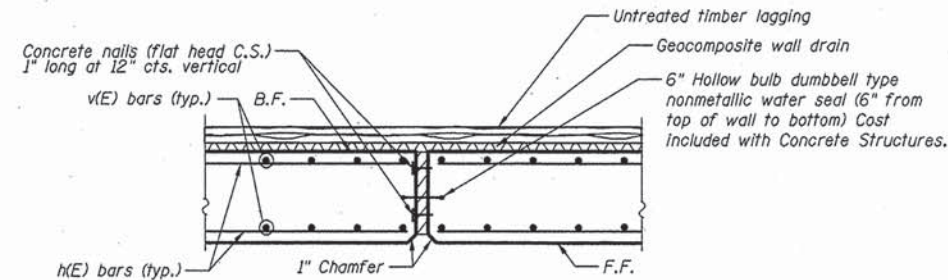
RETAINING WALL  
PLAN AND ELEVATION  
SCALE: 1"=10' SHEET 1 OF 2 SHEETS STA. TO STA.

F.A. RTE.	SECTION	COUNTY	TOTAL SHEETS	SHEET NO.
1552	14-00050-00-SW	COOK	23	17A
CONTRACT NO. 61B38				

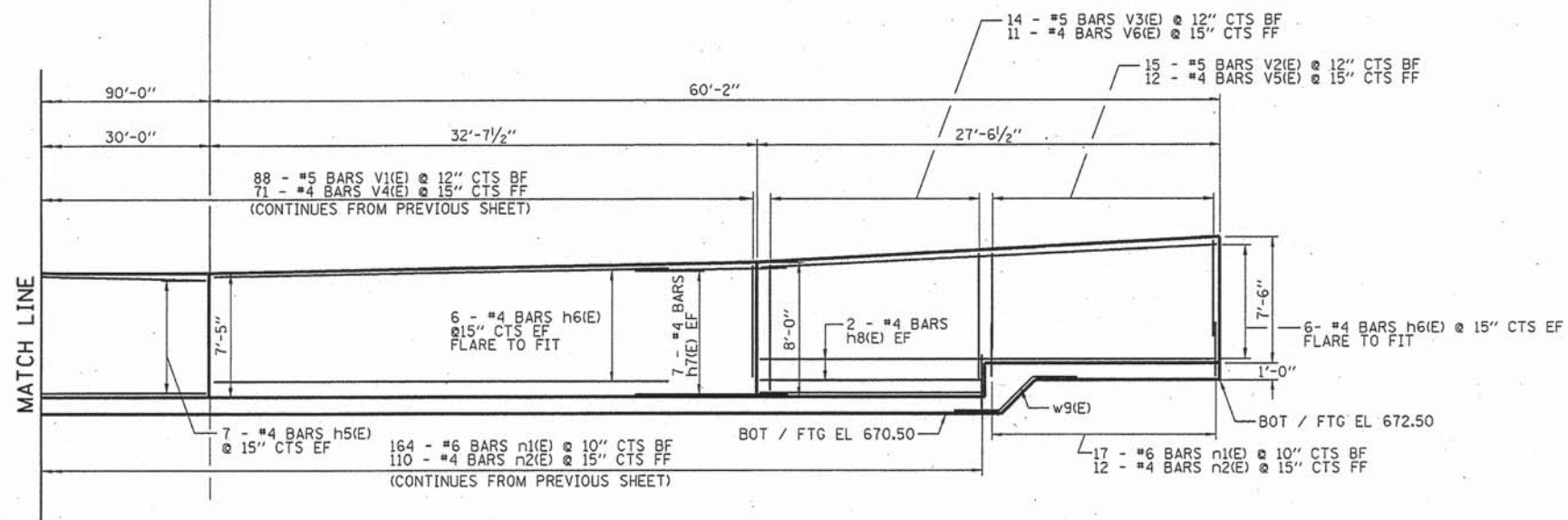
ILLINOIS FED. AID PROJECT



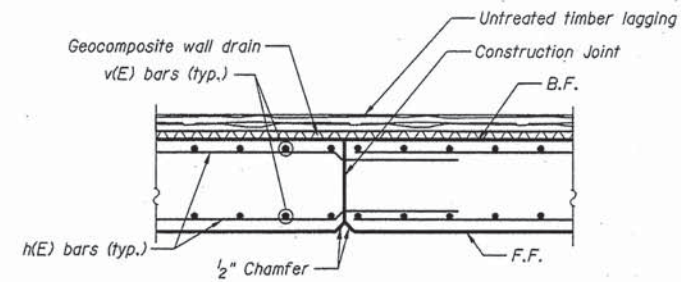
FOOTING PLAN



EXPANSION JOINT DETAIL



WALL ELEVATION



CONSTRUCTION JOINT DETAIL

FILE NAME = 74445-shr-wall12.dgn

USER NAME = mpaprrnk  
 PLOT SCALE = 5.0000' / 1" =  
 PLOT DATE = 6/2/2015

DESIGNED - JAR  
 DRAWN - MAP  
 CHECKED - JAR  
 DATE - 6/2/2015

REVISED - **06/02/2015**  
 REVISED -  
 REVISED -  
 REVISED -

STATE OF ILLINOIS  
 DEPARTMENT OF TRANSPORTATION

RETAINING WALL  
 PLAN AND ELEVATION

SCALE: 1"=10' SHEET 2 OF 2 SHEETS STA. TO STA.

F.A. RTE.	SECTION	COUNTY	TOTAL SHEETS	SHEET NO.
1552	14-00050-00-SW	COOK	23	17B
CONTRACT NO. 61B38				
ILLINOIS FED. AID PROJECT				