

STATE OF ILLINOIS
DEPARTMENT OF TRANSPORTATION
DIVISION OF HIGHWAYS

**PROPOSED
HIGHWAY PLANS**

FAI 57 (I-57)
SECTION: 2015-2 TREE REM FOR EAB CONT

TYPE OF REMOVAL - TREE REMOVAL
KANKAKEE COUNTY

C-93-106-15

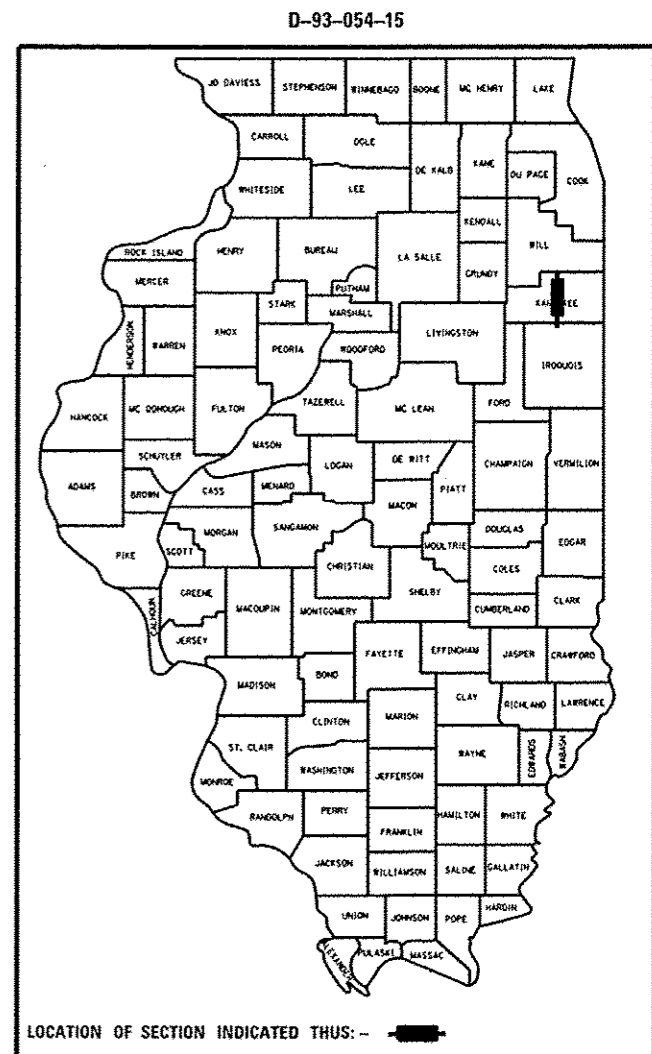
F.A.I. RTE.	SECTION	COUNTY	TOTAL SHEETS	SHEET NO.
57		KANKAKEE	7	1
		ILLINOIS	CONTRACT NO. 66E82	
		*2015-2 TREE REM FOR EAB CONT		

INDEX OF SHEETS

- 1 COVER SHEET
- 2 GENERAL NOTES
- 3 SUMMARY OF QUANTITIES
- 4 SCHEDULE
- 5 LOCATION MAP
- 6 INTERCHANGE LAYOUT
- 7 OLD LIGHTING PLANS (FOR INFO, ONLY)

LIST OF ILLINOIS DOT HIGHWAY STANDARDS

- | | |
|-----------|---|
| 000001-06 | STANDARD SYMBOLS, ABBREVIATIONS AND PATTERNS |
| 001006 | DECIMAL OF AN INCH AND OF A FOOT |
| 701456-03 | PARTIAL EXIT RAMP CLOSURE FREEWAY/EXPRESSWAY |
| 701101-04 | OFF-RD OPERATIONS, MULTILANE, 15' TO 24" FROM PAVEMENT EDGE |
| 701106-02 | OFF-RD OPERATIONS, MULTILANE, MORE THAN 15' AWAY |
| 701901-04 | TRAFFIC CONTROL DEVICES |



FUNCTIONAL CLASSIFICATION: INTERSTATE

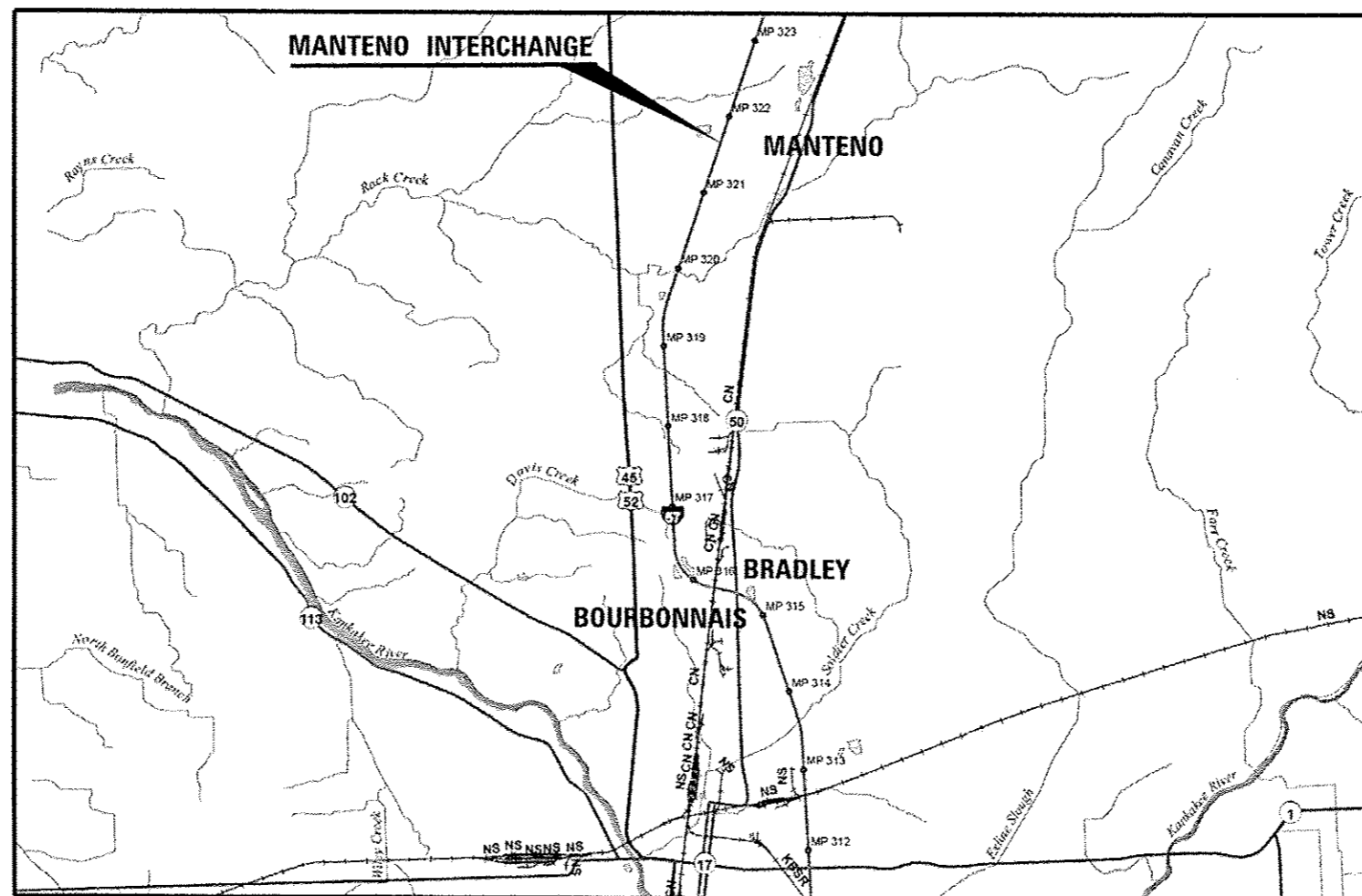
2013 ADT (NORTH OF MANTENO) = 32,300
PV = 79% SU = 5% MU = 16%

STATE OF ILLINOIS
DEPARTMENT OF TRANSPORTATION
DIVISION OF HIGHWAYS

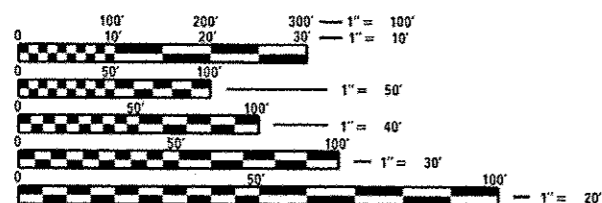
SUBMITTED April 1 20 15
Paul Loete, P.E.
DEPUTY DIRECTOR OF HIGHWAYS, REGION ENGINEER

May 8 20 15
Donald Baranzelli, P.E.
ENGINEER OF DESIGN AND ENVIRONMENT

May 8 20 15
Omer Esman, P.E.
DIRECTOR OF HIGHWAYS, CHIEF ENGINEER



LOCATION MAP - NOT TO SCALE



FULL SIZE PLANS HAVE BEEN PREPARED USING STANDARD ENGINEERING SCALES. REDUCED SIZED PLANS WILL NOT CONFORM TO STANDARD SCALES. IN MAKING MEASUREMENTS ON REDUCED PLANS, THE ABOVE SCALES MAY BE USED.

J.U.L.I.E.
JOINT UTILITY LOCATION INFORMATION FOR EXCAVATION
1-800-892-0123
OR 811

DISTRICT 3 (815) 434-6131
PROJECT ENGINEER: JOE KANNEL, P.E.
UNIT CHIEF: DUANE LUKKARI, P.E.
TOWNSHIPS: VARIOUS
CONTRACT NO. 66E82

PRINTED BY THE AUTHORITY
OF THE STATE OF ILLINOIS

GENERAL NOTES

FOR STABILIZATION, ALL TYPE III BARRICADES WILL REQUIRE A MINIMUM OF FOUR SAND BAGS PER BARRICADE.

SEEDING WILL NOT BE PERMITTED AT ANY TIME WHEN THE GROUND IS FROZEN, WET, OR IN AN UNTILLABLE CONDITION. LOCATIONS TO BE SEEDED WILL BE DETERMINED BY THE ENGINEER.

ONLY THOSE TREES DESIGNATED BY THE ENGINEER OR LISTED IN THE TREE REMOVAL SCHEDULE SHALL BE REMOVED. THE CONTRACTOR SHALL PROTECT ALL REMAINING TREES FROM DAMAGE DUE TO HIS OPERATIONS.

THE FINISHED EARTHWORK SHALL HAVE A VEGETATION SUSTAINING SOIL COVERING THE TOP FOUR INCHES (100 MILLIMETERS) IN AREAS TO BE SEEDED OR SODDED. THE VEGETATION SUSTAINING SOIL REQUIRED WILL NOT BE PAID FOR SEPARATELY BUT WILL BE INCLUDED IN THE COST OF THE TREE REMOVAL PAY ITEMS.

ALL EXCAVATED MATERIAL, WHICH INCLUDES DIGGING OR GRADING OF ANY SOIL OR FILL MATERIAL, WITH THE EXCEPTION OF AGGREGATE FILLS, MUST BE INCORPORATED WITHIN THE IDOT RIGHT OF WAY DUE TO ENVIRONMENTAL DOCUMENTATION REQUIREMENTS.

ABANDONED UNDERGROUND UTILITIES THAT CONFLICT WITH CONSTRUCTION SHALL BE DISPOSED OF OUTSIDE THE LIMITS OF THE RIGHT OF WAY ACCORDING TO ARTICLE 202.03 OF THE STANDARD SPECIFICATIONS AND AS DIRECTED BY THE ENGINEER. THIS WORK WILL NOT BE PAID FOR SEPARATELY, BUT WILL BE INCLUDED IN THE COST OF EARTH EXCAVATION.

ANY REFERENCE TO A STANDARD IN THESE PLANS SHALL BE INTERPRETED TO MEAN THE EDITION AS INDICATED BY THE SUBNUMBER SHOWN IN THE LIST OF STANDARDS OR THE COPY INCLUDED IN THESE PLANS.

MEMBERS OF JULIE KNOWN TO BE WITHIN THE LIMITS OF THE IMPROVEMENT AREA:

NON-MEMBERS OF JULIE KNOWN TO BE WITHIN THE LIMITS OF THE IMPROVEMENT AREA:

THE CONTRACTOR SHALL CONTACT JULIE AT LEAST 48 HOURS PRIOR TO EXCAVATION TO DETERMINE WHICH UTILITIES ARE IN THE AREA.

COMMITMENTS:

ENVIRONMENTAL COORDINATION

STATE OF ILLINOIS
DEPARTMENT OF TRANSPORTATION
DISTRICT THREE

PREPARED BY: *Don Brown*
DISTRICT STUDIES & PLANS ENGINEER

DATE: April 1, 2015

EXAMINED BY: *Wayne L. Phillips*
DISTRICT CONSTRUCTION ENGINEER

Wayne L. Phillips
DISTRICT MATERIALS ENGINEER

Bruce A. Anderson
DISTRICT OPERATIONS ENGINEER

*2015-2 TREE REMOVAL FOR EAB CONTROL

FILE NAME *	USER NAME * lukkaridp	DESIGNED -	REVISED -	STATE OF ILLINOIS DEPARTMENT OF TRANSPORTATION	GENERAL NOTES	F.A.I. RTE.	SECTION	COUNTY	TOTAL SHEETS	SHEET NO.	
ct:\pw\work\pvidat\lukkaridp\0429757\03	6E29757-cover.dgn	DRAWN -	REVISED -			57	*	KANKAKEE	7	2	
	PLOT SCALE * 100.0000' / 1"	CHECKED -	REVISED -			CONTRACT NO. 66E82					
	PLOT DATE * 4/1/2015	DATE -	REVISED -			ILLINOIS HIGHWAY AID PROJECT					
						SCALE:	SHEET 1 OF 1 SHEETS		STA.	TO STA.	

SUMMARY OF QUANTITIES				CONSTR. CODE
				100% STATE
CODE NO.	ITEM	UNIT	TOTAL QUANTITY	ROADWAY
				0031 NONE
20100110	TREE REMOVAL (6 TO 15 UNITS DIAMETER)	UNIT	782	782
20100210	TREE REMOVAL (OVER 15 UNITS DIAMETER)	UNIT	98	98
67100100	MOBILIZATION	LSUM	1	1
70100825	TRAFFIC CONTROL AND PROTECTION, STANDARD 701456	LSUM	1	1
70106800	CHANGEABLE MESSAGE SIGN	CAL MO	1	1
X2010310	TREE REMOVAL (SPECIAL)	UNIT	35	35

FILE NAME *	USER NAME * lukkaridp	DESIGNED -	REVISED -	STATE OF ILLINOIS DEPARTMENT OF TRANSPORTATION	SUMMARY OF QUANTITIES	F.A.I. RTE.	SECTION	COUNTY	TOTAL SHEETS	SHEET NO.	
ar\pr_work\psidot\lukkaridp\20150229\02	66E29-shr-cover.dgn	DRAWN -	REVISED -			57	*	KANKAKEE	7	3	
PLOT SCALE = 1/2" = 100'		CHECKED -	REVISED -			CONTRACT NO. 66E82					
PLOT DATE = 4/1/2015		DATE -	REVISED -			ILLINOIS NON-FED. AID PROJECT					
				SCALE: SHEET 1 OF 1 SHEETS STA. TO STA.							

*2015-2 TREE REMOVAL FOR EAB CONTROL

TREE REMOVAL							
NUMBER OF TREES	LOCATION	SIZE DIAM. 4 TO 6	SIZE DIAM. 6 TO 15	SIZE DIAM. OVER 15	TREE REMOVAL (SPECIAL)	TREE REMOVAL (6 TO 15 UNITS DIAM.)	TREE REMOVAL (OVER 15 UNITS DIAM.)
		UNIT	UNIT	UNIT	UNIT	UNIT	UNIT
	NE QUADRANT						
1	RAMP			22			22
1	RAMP			19			19
3	INFIELD		15			45	
1	INFIELD		14			14	
2	INFIELD		13			26	
2	INFIELD		12			24	
1	INFIELD		11			11	
1	INFIELD		10			10	
9	INFIELD		8			72	
	NW QUADRANT						
4	INFIELD		14			56	
6	INFIELD		12			72	
13	INFIELD		10			130	
2	INFIELD		9			18	
4	INFIELD		8			32	
3	INFIELD		7			21	
3	INFIELD		6			18	
2	INFIELD	5			10		
	SE QUADRANT						
1	FRT. ROAD			25			25
1	FRT. ROAD			16			16
1	FRT. ROAD			16			16
1	FRT. ROAD		15			15	
1	INFIELD		13			13	
1	INFIELD		12			12	
2	INFIELD		10			20	
1	INFIELD		8			8	
1	INFIELD	5			5		
	SW QUADRANT						
4	INFIELD		15			60	
1	INFIELD		14			14	
2	INFIELD		13			26	
2	INFIELD		12			24	
2	INFIELD		10			20	
1	INFIELD		9			9	
2	INFIELD		6			12	
4	INFIELD	5			20		
86	TOTALS				35	782	98

FILE NAME =	USER NAME = lukkaridp	DESIGNED -	REVISED -
et:\pw\work\p\id\lukkaridp\0429757\0366E29-shit-schedule.dgn		DRAWN -	REVISED -
	PLOT SCALE = 100.0000' / in.	CHECKED -	REVISED -
	PLOT DATE = 4/1/2015	DATE -	REVISED -

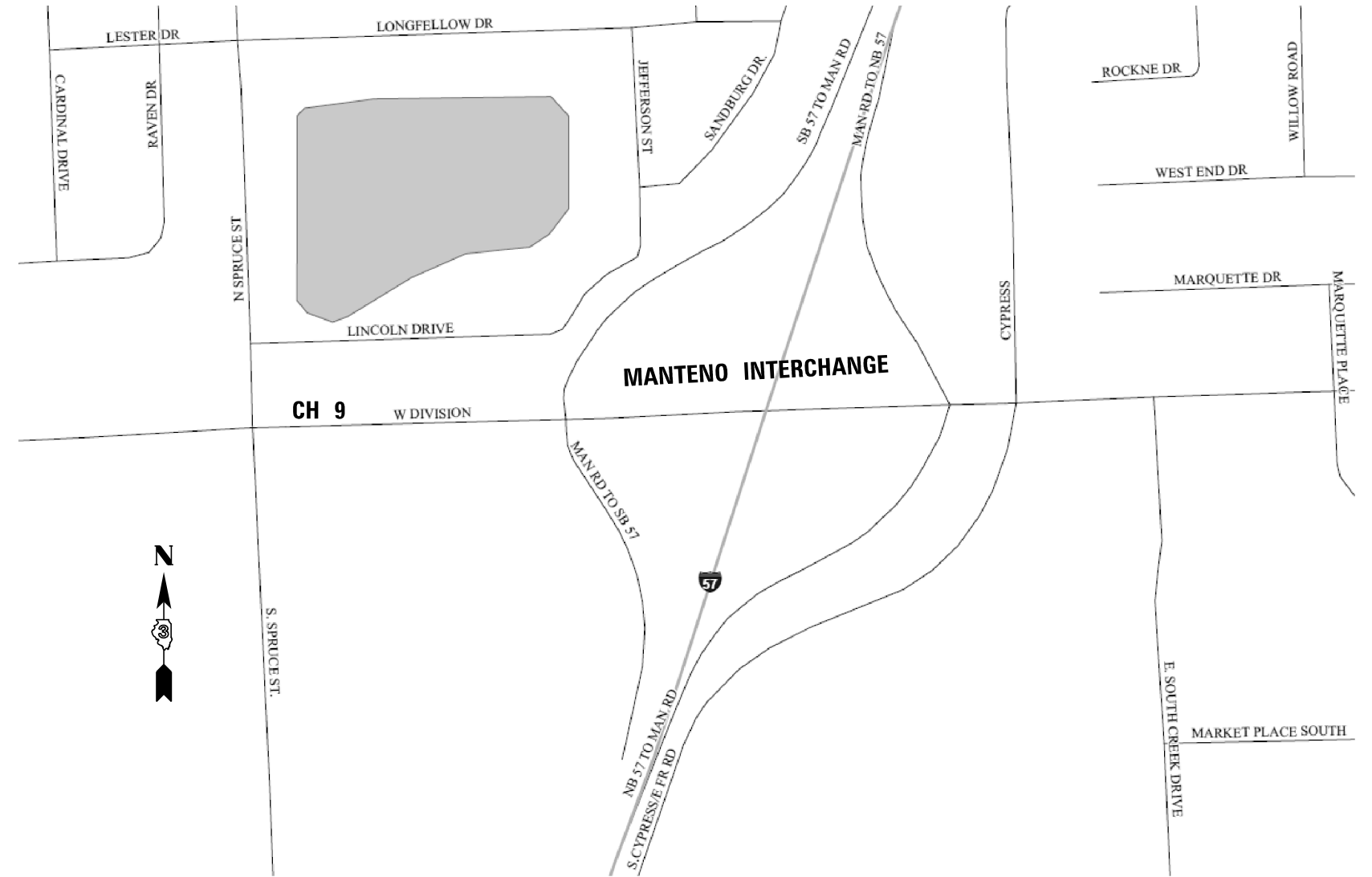
**STATE OF ILLINOIS
DEPARTMENT OF TRANSPORTATION**

SCHEDULE

SCALE: SHEET NO. 1 OF 1 SHEETS STA. TO STA.

*2015-2 TREE REMOVAL FOR EAB CONTROL

F.A.I. RTE.	SECTION	COUNTY	TOTAL SHEETS	SHEET NO.
57	*	KANKAKEE	7	4
CONTRACT NO. 66E82			ILLINOIS FED. AID PROJECT	

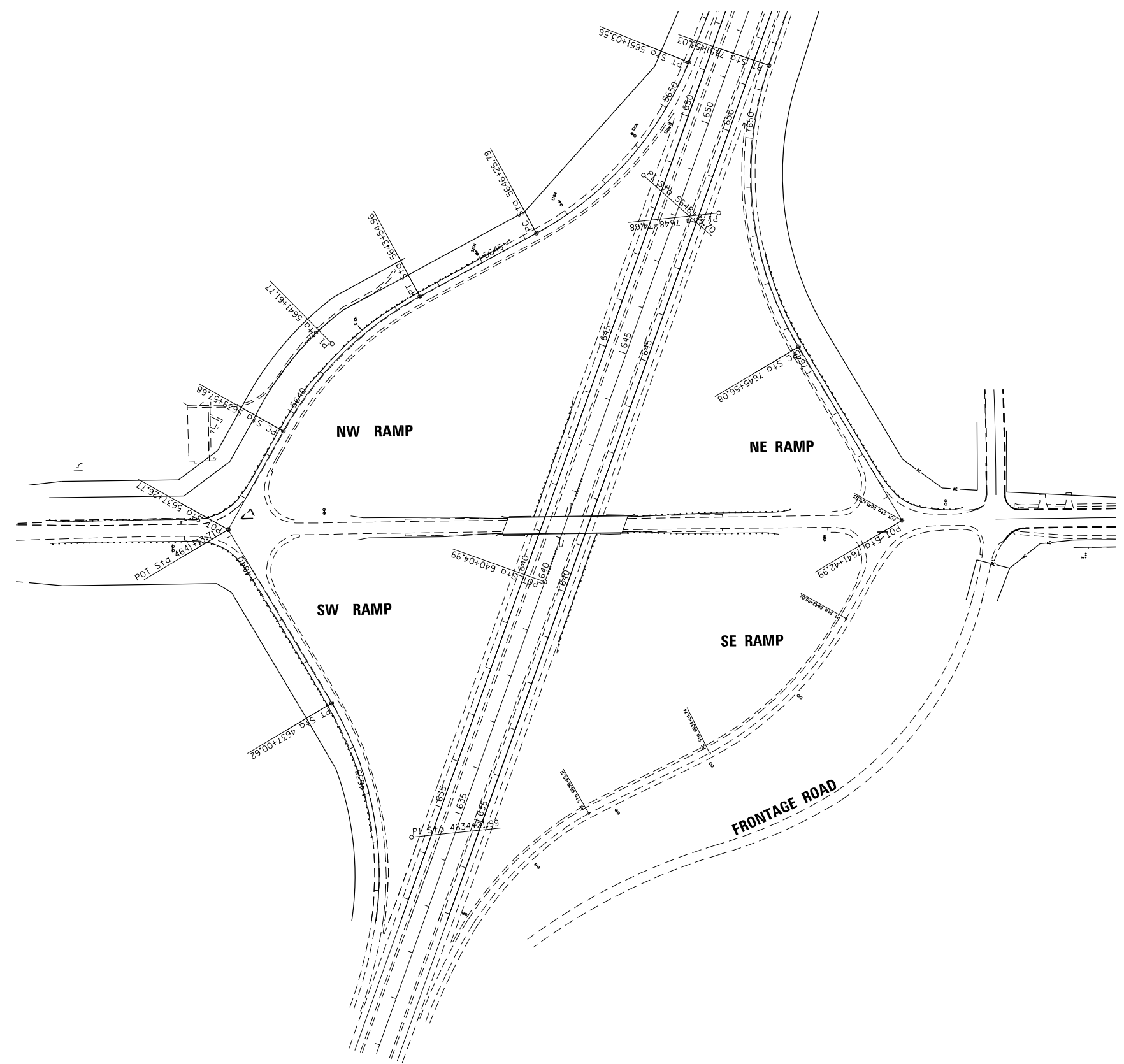


FILE NAME =	USER NAME = lukkeridp	DESIGNED -	REVISED -
e:\pwork\pwork\lukkeridp\0429757\0366E29-shr-cover.dgn		DRAWN -	REVISED -
	PLOT SCALE = 100.0000' / in.	CHECKED -	REVISED -
	PLOT DATE = 4/1/2015	DATE -	REVISED -

**STATE OF ILLINOIS
DEPARTMENT OF TRANSPORTATION**

LOCATION MAP			
SCALE:	SHEET 1	OF 1 SHEETS	STA. TO STA.

*2015-2 TREE REMOVAL FOR EAB CONTROL				
F.A.I. RTE.	SECTION	COUNTY	TOTAL SHEETS	SHEET NO.
57	*	KANKAKEE	7	5
CONTRACT NO. 66E82				
ILLINOIS NON FED. AID PROJECT				



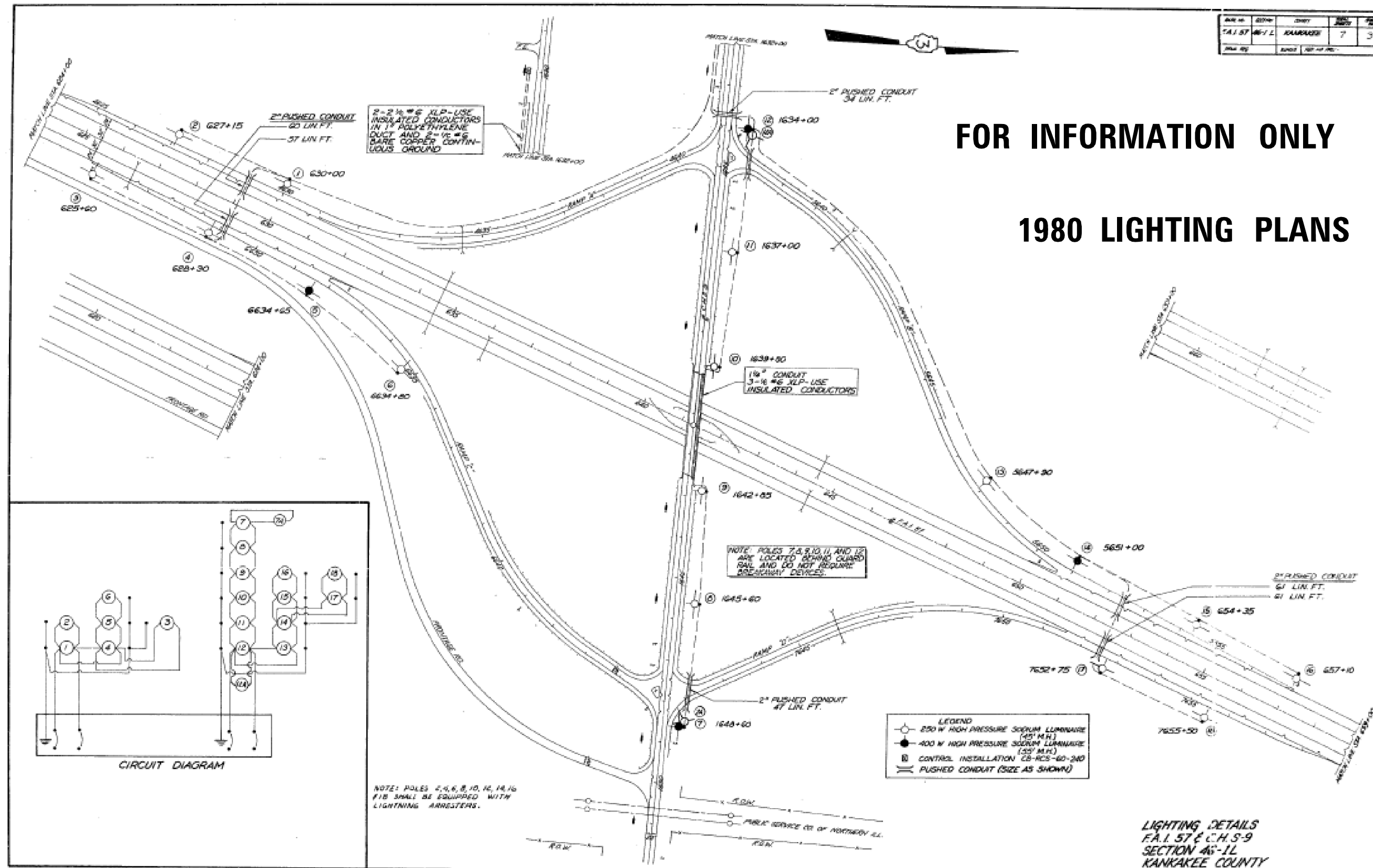
FILE NAME =	USER NAME = lukkeridp	DESIGNED -	REVISED -
et:\pwork\pwork\lukkeridp\0429757\0366E29-shit-cover.dgn		DRAWN -	REVISED -
	PLOT SCALE = 100.0000' / in.	CHECKED -	REVISED -
	PLOT DATE = 4/1/2015	DATE -	REVISED -

**STATE OF ILLINOIS
DEPARTMENT OF TRANSPORTATION**

INTERCHANGE LAYOUT			
SCALE:	SHEET NO.	OF SHEETS	STA. TO STA.

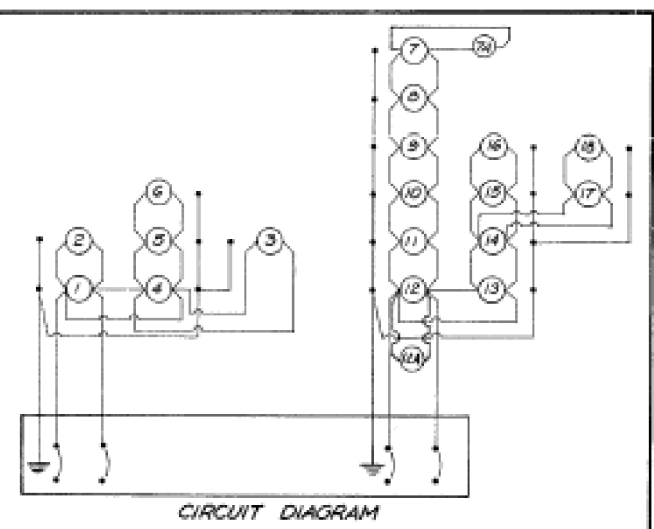
*2015-2 TREE REMOVAL FOR EAB CONTROL				
F.A.I. RTE.	SECTION	COUNTY	TOTAL SHEETS	SHEET NO.
57	*	KANKAKEE	7	6
			CONTRACT NO. 66E82	
ILLINOIS FED. AID PROJECT				

DATE	BY	CHKD	APPD	NO.
7/1/87	WJL	KAMARSKI		7
DATE	BY	CHKD	APPD	NO.
				3



FOR INFORMATION ONLY

1980 LIGHTING PLANS



LIGHTING DETAILS
 F.A.I. 57 E.C.H.S-9
 SECTION 46-1L
 KANKAKEE COUNTY

FILE NAME =	USER NAME = lukkaridp	DESIGNED -	REVISED -	STATE OF ILLINOIS DEPARTMENT OF TRANSPORTATION	MANTENO INTERCHANGE	F.A.I. R.T.E.	SECTION	COUNTY	TOTAL SHEETS	SHEET NO.	
et:\pw\work\p\id\lukkaridp\0429757\0366E29-shr-details.dgn		DRAWN -	REVISED -			57	*	KANKAKEE	7	7	
\$MODELNAME\$	PLOT DATE = 4/1/2015	CHECKED -	REVISED -			CONTRACT NO. 66E82					
		DATE -	REVISED -			ILLINOIS FED. AID PROJECT					