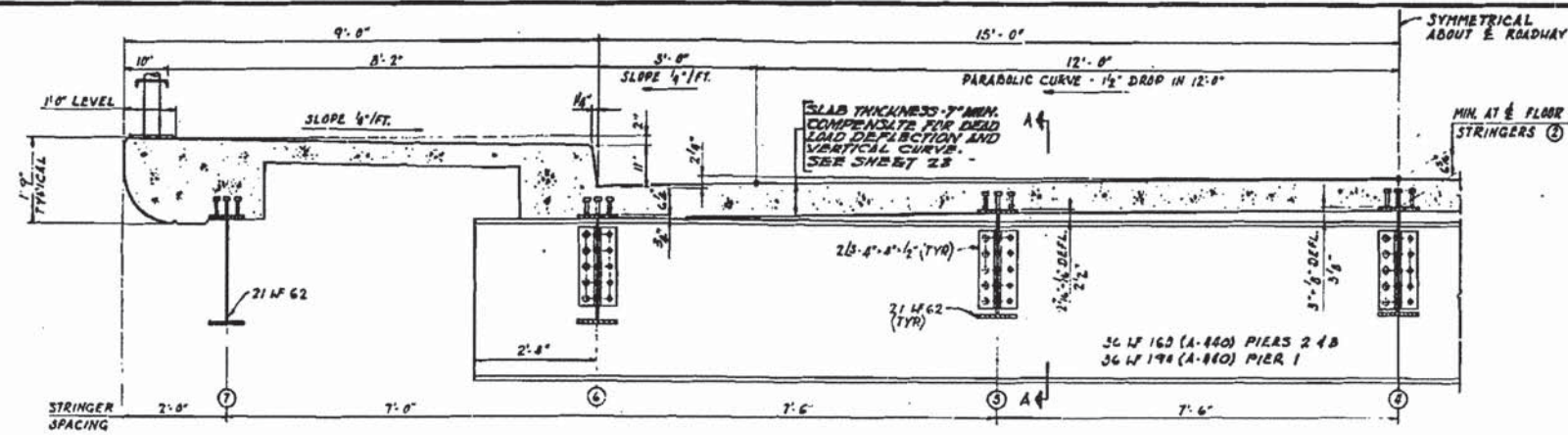
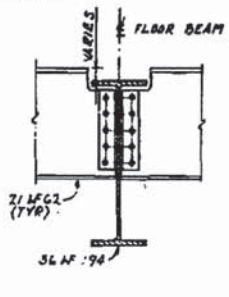


ROUTE NO	SECTION	COUNTY	TOTAL SHEETS	SHEET NO
CH 234	14-00164-00-BR	COOK	50	17
STA	TO STA		PROJECT	
1+7.8	1+11.0		HIGHWAY	

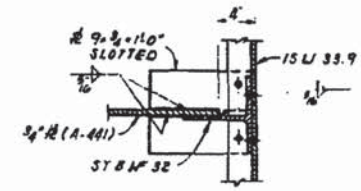
SHEET 7 OF 28



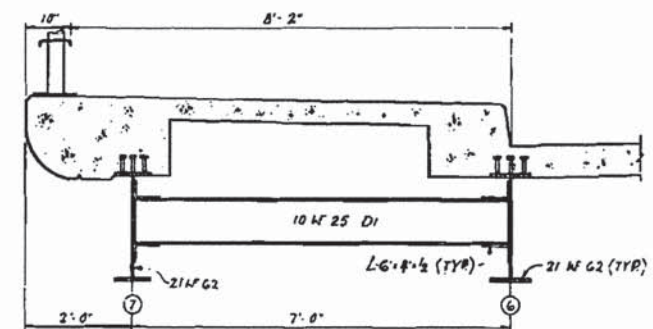
TYPICAL CROSS-SECTION AT FLOOR BEAMS
 SCALE: 3/4" = 1'-0"



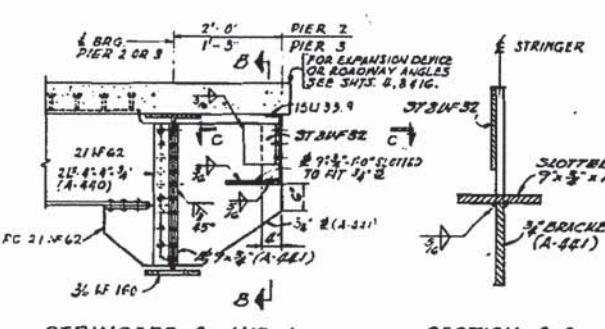
SECTION A-A
 SCALE: 3/4" = 1'-0"



SECTION C-C
 SCALE: 3/4" = 1'-0"

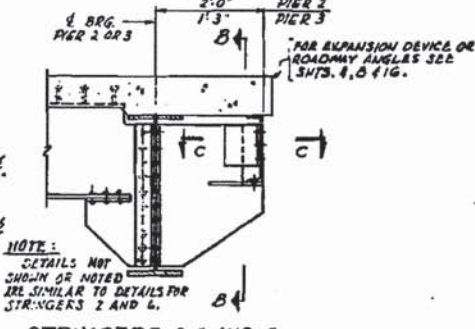


TYP. CROSS-SECTION AT DIAPHRAGM 'DI'
 SCALE: 3/4" = 1'-0"

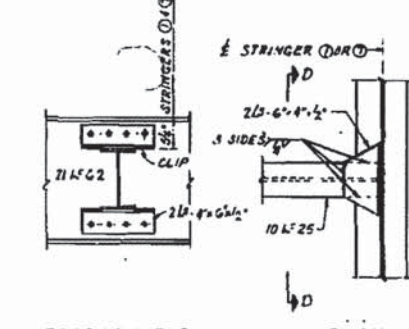


STRINGERS 2 AND 6
 SCALE: 3/4" = 1'-0"

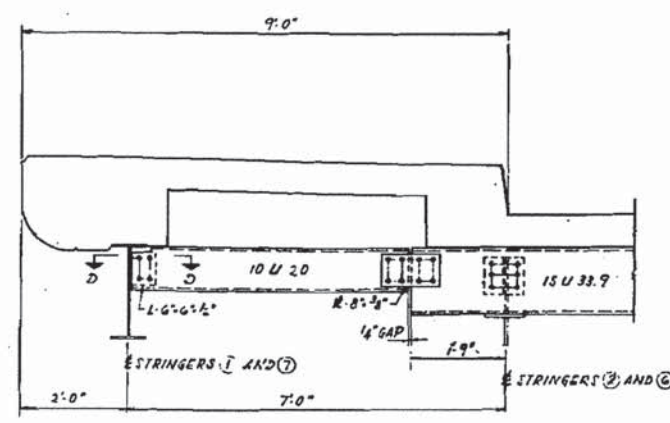
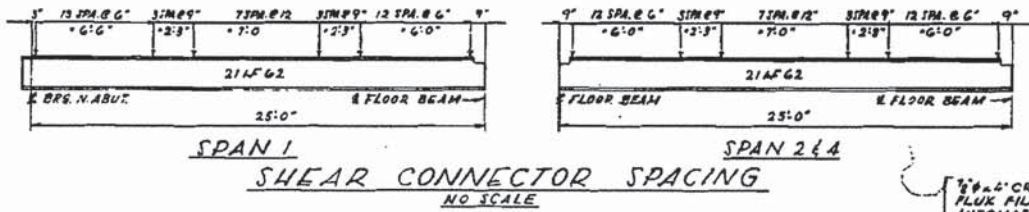
SECTION B-B
 SCALE: 3/4" = 1'-0"



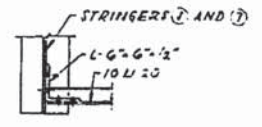
STRINGERS 3, 4 AND 5
 SCALE: 3/4" = 1'-0"



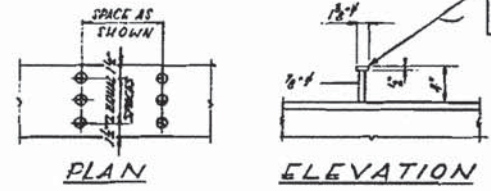
SECTION D-D
DIAPHRAGM CONNECTION
 SCALE: 1" = 1'-0"



CHANNEL DETAIL AT SIDEWALK
 SCALE: 3/4" = 1'-0"



SECTION "D-D"
 SCALE: 1" = 1'-0"



WELDED STUD SHEAR CONNECTOR

1/2" x 1/2" CR 1020ST. GRANULAR OR SOLID FLOW FILLED HEADED STUDS AUTOMATICALLY END WELDED. (EST. WT. 1750 LBS. INCLUDED IN STRUCTURAL STEEL.)

FILE NO. 9-B-61
 ILLINOIS DIVISION OF HIGHWAYS
 CALUMET-SAG NAVIGATION PROJECT
 CHATHAM STREET HIGHWAY BRIDGE
 CROSS-SECTION AND DETAILS
 SPANS 1, 2 AND 4
 SCALE AS NOTED
 DATE: 24 JUNE 1963

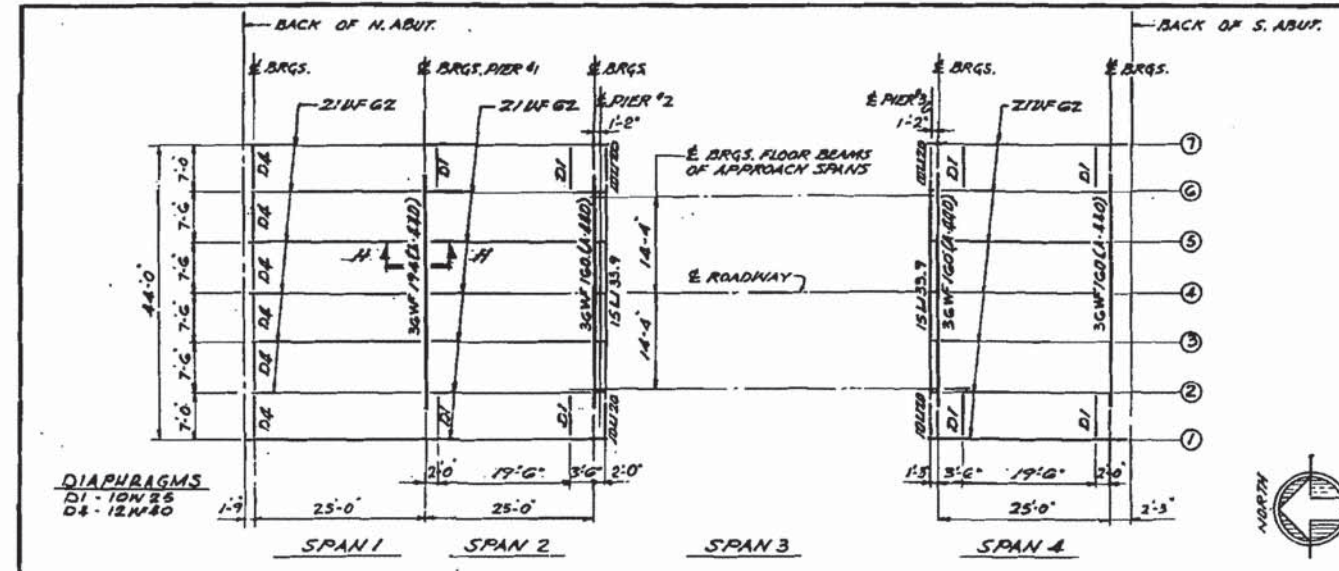
ALFRED BENESCH & COMPANY
 10 SOUTH WABASH AVE
 CONSULTING ENGINEERS
 CHICAGO, ILLINOIS

FOR INFORMATION ONLY

I:\CH\VP\J\020023634\Struct\016-5005-074-EP.dgn

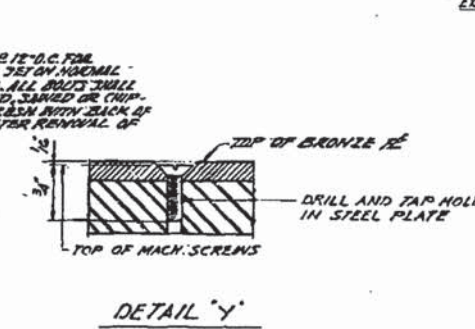
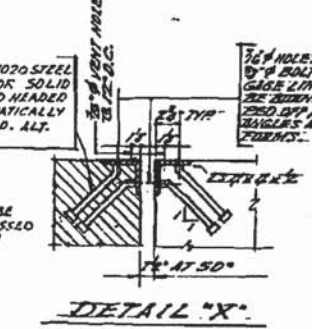
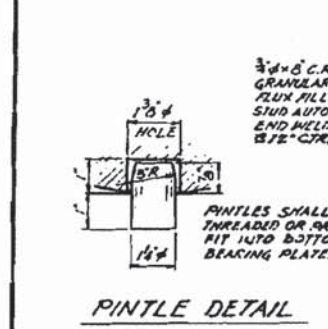
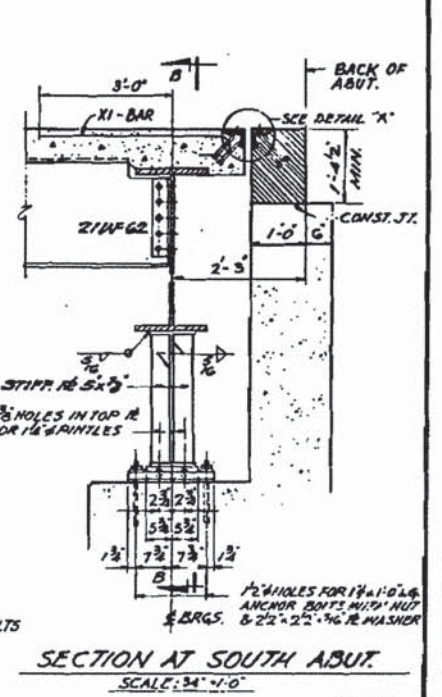
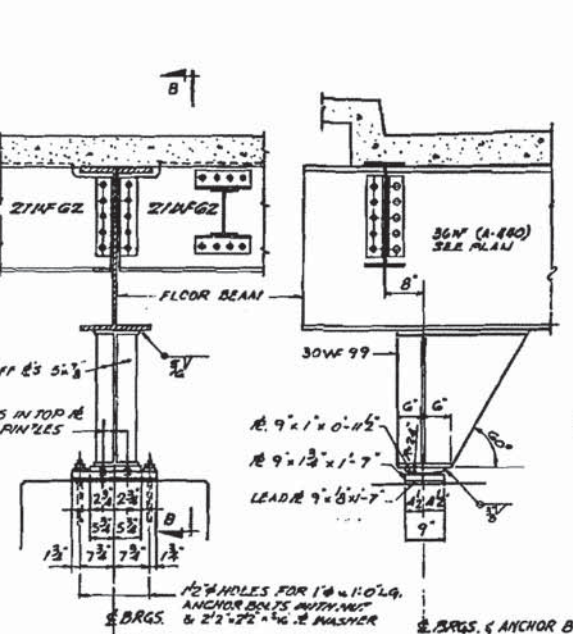
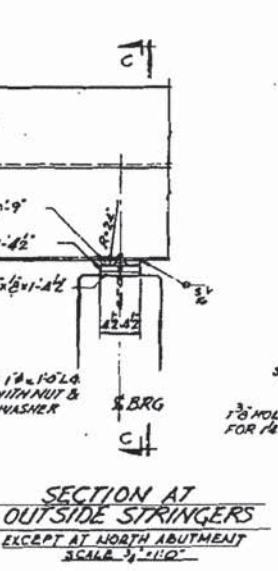
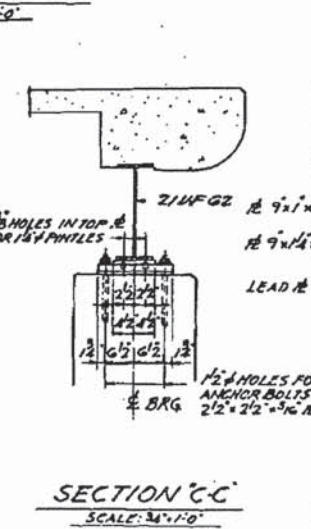
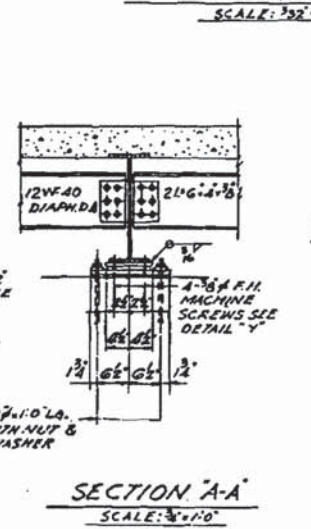
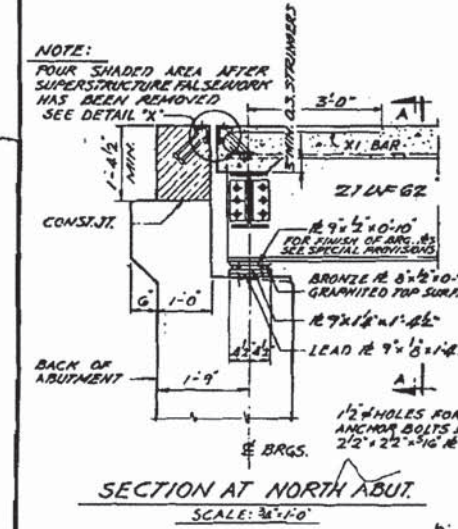
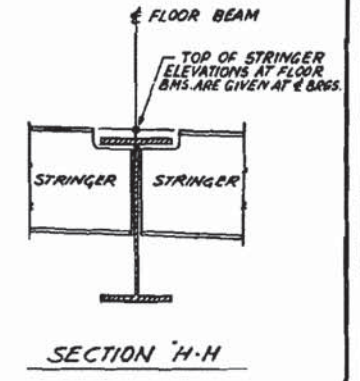
LOCHNER H. W. LOCHNER, INC. 225 WEST WASHINGTON STREET 12 TH FLOOR CHICAGO, ILLINOIS 60606	USER NAME = FILE NAME = 016-5005-074-EP.dgn PLOT SCALE = PLOT DATE =	DESIGNED - CHECKED - DRAWN - CHECKED -	REVISED REVISED REVISED REVISED	STATE OF ILLINOIS DEPARTMENT OF TRANSPORTATION	EXISTING PLAN 21 - CHATHAM STREET BRIDGE STRUCTURE NO. 016-5005	MS 1090	SECTION 14-00164-00-BR	COUNTY COOK	TOTAL SHEETS 122	SHEET NO. 101
					SHEET NO. 5-74 OF 95 SHEETS	CONTRACT NO. 61B58	ILLINOIS FED. AID PROJECT			

PROJECT NO.	SECTION	COUNTY	TOTAL SHEETS	SHEET NO.
016-5005	22	COOK	95	18
STA.	TO STA.		PROJECT	
14+00	14+00		CHATHAM ST BRIDGE	
SHEET 8 OF 28				



TOP OF STRINGER ELEVATIONS
(FOR FABRICATION ONLY)

STRINGER NO.	1 AND 7	2 AND 6	3 AND 5	4
E. BRGS. NORTH ABUTMENT	23.581	23.581	23.720	23.769
E. BRGS. PIER 1 SPAN 1	24.706	24.706	24.865	24.874
E. BRGS. PIER 2 SPAN 2	25.831	25.831	25.970	26.019
E. BRGS. PIER 3 SPAN 4	25.678	25.678	25.832	25.881
E. BRGS. SOUTH ABUTMENT	24.205	24.205	24.344	24.373



BILL OF MATERIAL

ITEM	UNIT	QUANTITY
STRUCTURAL STEEL	LBS	52,630
STRUCTURAL STEEL (WALLOYS)	LBS	18,960

ILLINOIS DIVISION OF HIGHWAYS
CAUMMET-SAG NAVIGATION PROJECT
CHATHAM STREET HIGHWAY BRIDGE
FRAMING PLAN AND BEARING DETAILS
SPANS 1, 2 AND 4
SCALE: AS NOTED DATE: 24 JUNE 1965

I:\CHIV\PLA\020202\3634\5\sect\1\p\016-5005-075-EP.dgn

LOCHNER
H. W. LOCHNER, INC.
225 WEST WASHINGTON STREET
12 TH FLOOR
CHICAGO, ILLINOIS 60606

USER NAME =	DESIGNED -	REVISED
FILE NAME = 016-5005-075-EP.dgn	CHECKED -	REVISED
PLOT SCALE =	DRAWN -	REVISED
PLOT DATE =	CHECKED -	REVISED

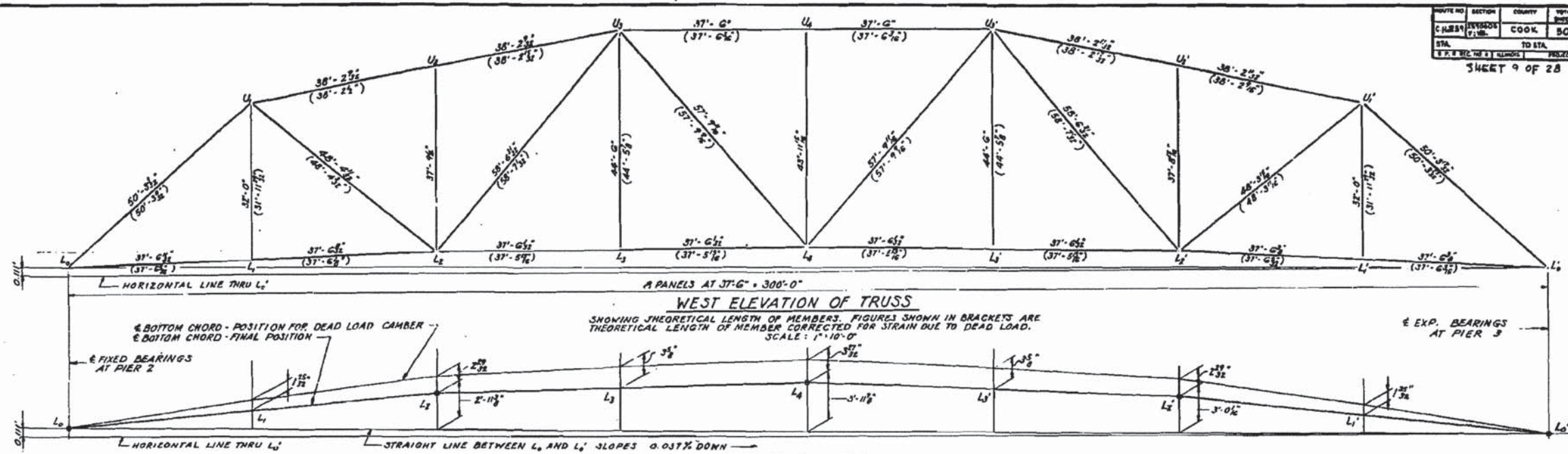
STATE OF ILLINOIS
DEPARTMENT OF TRANSPORTATION

EXISTING PLAN 22 - CHATHAM STREET BRIDGE
STRUCTURE NO. 016-5005

SHEET NO. 5-75 OF 95 SHEETS

MS	SECTION	COUNTY	TOTAL SHEETS	SHEET NO.
1090	14-00164-00-BR	COOK	122	102
			CONTRACT NO. 61B58	
ILLINOIS FED. AID PROJECT				

FOR INFORMATION ONLY



STRESS TABLE

MEMBER	SECTION	LENGTH C. TO C. JOINT FEET	X-X	Y	L-12	AREA SQ. IN.	STRESSES - KIPS				WIND STRESS - KIPS			E. STRESSES - KIPS			UNIT STRESS IN KIPS PER SQ. IN.			ALLOWED UNIT STRESS KIPS PER SQ. IN.	D.L. DEFORM. IN INCHES	GRADE OF STEEL	MEMBER								
							DEAD LOAD	LIVE LOAD	IMPACT	SIDE-WALK	25% WIND	50% WIND	100% WIND	D-1	D-2	D-3	A	B	C					A	B	C					
L0-U1	2-18 L1/2 2-COV. R15 1/2	50.258	6.46	6.80	93.4	78.40	-	-71.64	-833	-192	-23	-41	-28	-	-1089	-861	-1097	16.81	20.31	18.90	17.10	21.40	-1/4	A440	L0-U1						
U1-U2	2-18 L1/2 2-COV. R15 1/2	38.191	6.40	6.81	71.6	76.46	-	-70.46	-920	-198	-23	-46	-40	-	-1187	-960	-1199	18.07	15.38	18.55	19.13	23.90	-1/8	A440	U1-U2						
U2-U3	2-18 L1/2 2-COV. R15 1/2	37.500	6.30	6.77	71.4	83.22	-	-77.22	-1033	-223	-26	-51	-44	-	-1333	-1077	-1346	18.50	15.67	18.80	19.14	23.92	-3/8	A440	U2-U3						
U3-U4	SAME AS U2-U3	38.196	6.40	6.81	71.6	76.46	-	-70.46	-920	-198	-23	-46	-40	-	-1187	-960	-1199	18.07	15.38	18.55	19.13	23.90	-1/8	A440	U3-U4						
U4-U5	SAME AS U2-U3	50.295	6.46	6.80	93.5	78.40	-	-71.64	-833	-192	-23	-41	-28	-	-1089	-861	-1097	16.81	20.31	18.90	17.10	21.40	-1/4	A440	U4-U5						
L0-L2	2-R18 1/2 1-R16 1/2 WELDED	37.528	4.58	6.89	98.2	46.50	38.50	-	+622	+134	+16	+31	+119	+30	+803	+741	+869	23.66	22.68	25.48	24.00	30.00	+13/32	A441	L0-L2						
L2-L4	2-R18 1/2 1-R16 1/2 WELDED	37.503	4.58	6.61	98.6	70.25	58.25	-	+758	+206	+24	+47	+159	+44	+1235	+1117	+1327	23.91	22.40	25.67	24.00	30.00	+7/16	A441	L2-L4						
L4-L5	SAME AS L2-L4	37.503							SAME AS L2-L4																				L4-L5		
L5-L6	SAME AS L2-L4	37.531							SAME AS L2-L4																						L5-L6
U1-L2	2-R18 1/2 1-R16 1/2 WELDED	48.362	3.52	6.78	165.0	27.98	22.98	-	+362	+90	+14	+20	-	-	+492	-	-	26.81	-	-	21.00	-	-1/4	A441	U1-L2						
L2-U3	2-15 L3/4 2-COV. R15 1/2	58.581	6.40	6.75	110.0	35.30	-	-29.30	-86	-55	-9	-11	-	-	-161	-	-	7.26	-	-	12.22	-	-1/8	A36	L2-U3						
U3-L4	2-R18 1/2 1-R16 1/2 WELDED	57.808	3.69	6.97	188.0	20.63	16.63	-	+116	+60	+11	+11	-	-	+198	-	-	18.00	-	-	20.00	-	-1/8	A36	U3-L4						
L4-U5	SAME AS U3-L4	57.808	3.69	6.97	188.0	20.63	16.63	-	+116	+60	+11	+11	-	-	+198	-	-	18.00	-	-	20.00	-	-1/8	A36	L4-U5						
U5-L5	SAME AS L2-U3	58.581	6.40	6.75	110.0	35.30	-	-29.30	-86	-55	-9	-11	-	-	-160	-	-	7.23	-	-	12.22	-	-1/8	A36	U5-L5						
L5-U5	SAME AS U1-L2	48.327	3.52	6.76	164.6	27.98	22.98	-	+363	+90	+14	+20	-	-	+493	-	-	26.84	-	-	27.00	-	+1/4	A441	L5-U5						
U1-L4	2-R18 1/2 1-R16 1/2 WELDED	32.000	2.48	6.88	155.0	20.44	16.24	-	+152	+65	+20	+7	-	-	+244	-	-	15.00	-	-	20.00	-	+3/8	A36	U1-L4						
U2-L4	2-R18 1/2 1-R16 1/2 WELDED	31.772	3.745	4.00	7.75	113.2	15.63	-	4.00	-16	-	-	-	-	-16	-	-	4.00	-	-	11.97	-	-	A36	U2-L4						
U1-L3	2-R18 1/2 1-R16 1/2 WELDED	44.500	3.04	6.98	176.0	23.44	19.74	-	+152	+65	+20	+7	-	-	+244	-	-	12.35	-	-	20.00	-	+1/8	A36	U1-L3						
U4-L4	SAME AS U2-L4	43.995	4.00	7.75	132.0	15.63	-	4.00	-18	-	-	-	-	-	-18	-	-	4.50	-	-	10.35	-	-	A36	U4-L4						

* INCLUDES BENDING STRESS DUE TO WEIGHT OF MEMBER AND WIND ON MEMBER.

ELEVATIONS

PANEL POINT	TOP OF CROWN	BOTTOM CHORD
L0	26.685	23.005
L1	28.343	25.136
L2	29.607	26.597
L3	30.365	27.102
L4	30.617	27.607
L5	30.365	27.102
L6	29.607	26.597
L7	28.343	25.081
L8	26.674	23.564

TRUSS REACTIONS (KIPS)

DEAD LOAD	625
LIVE LOAD	140
IMPACT	16
SIDEWALK LIVE LOAD	30
TOTAL	811

NOTES:
 FOR GENERAL NOTES SEE SHEET 2
 FOR ADDITIONAL NOTES SEE SHEET 13
 ELEVATIONS GIVEN ARE AFTER DEAD LOAD DEFLECTION.

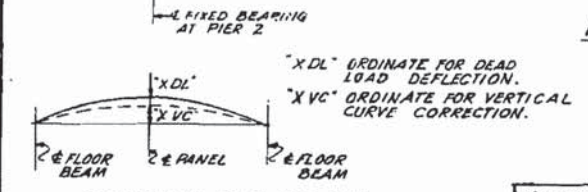
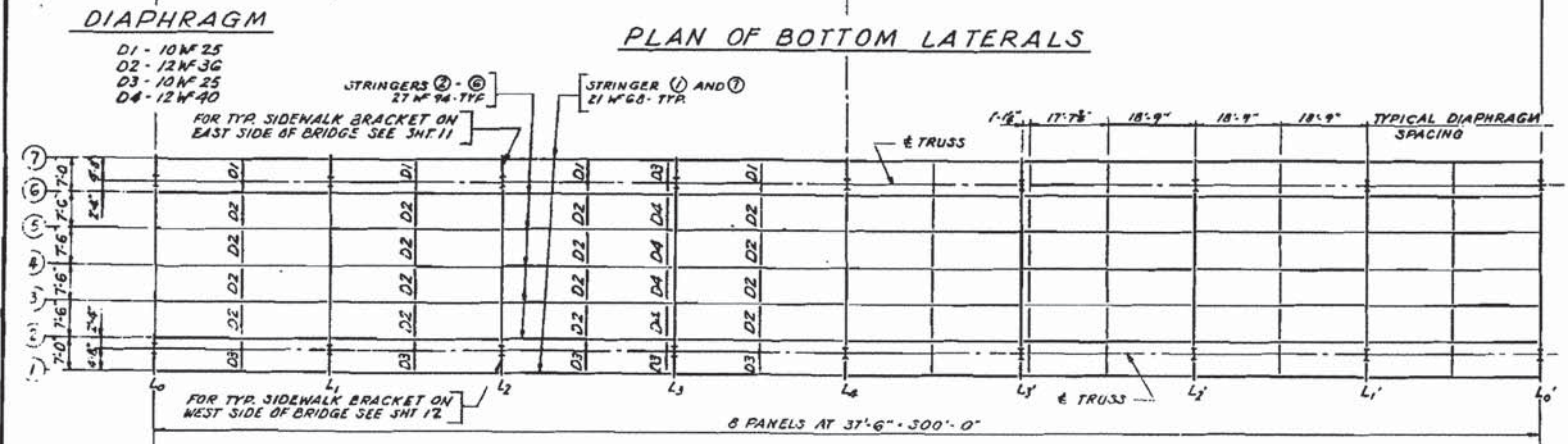
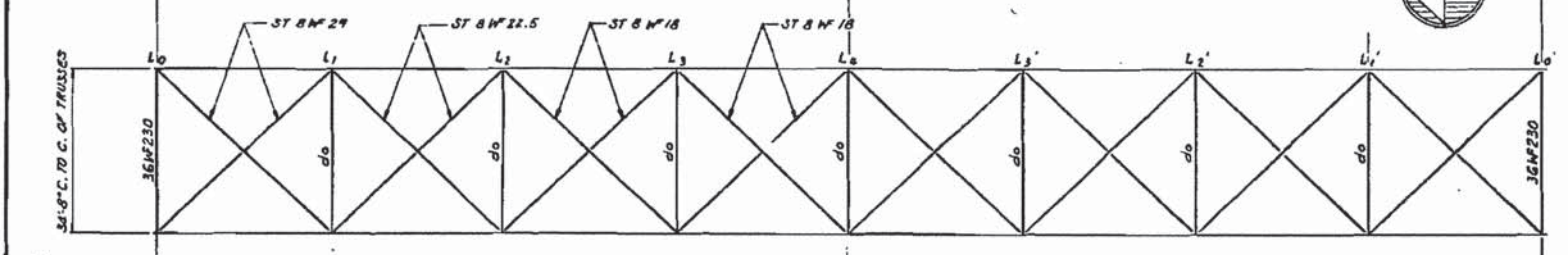
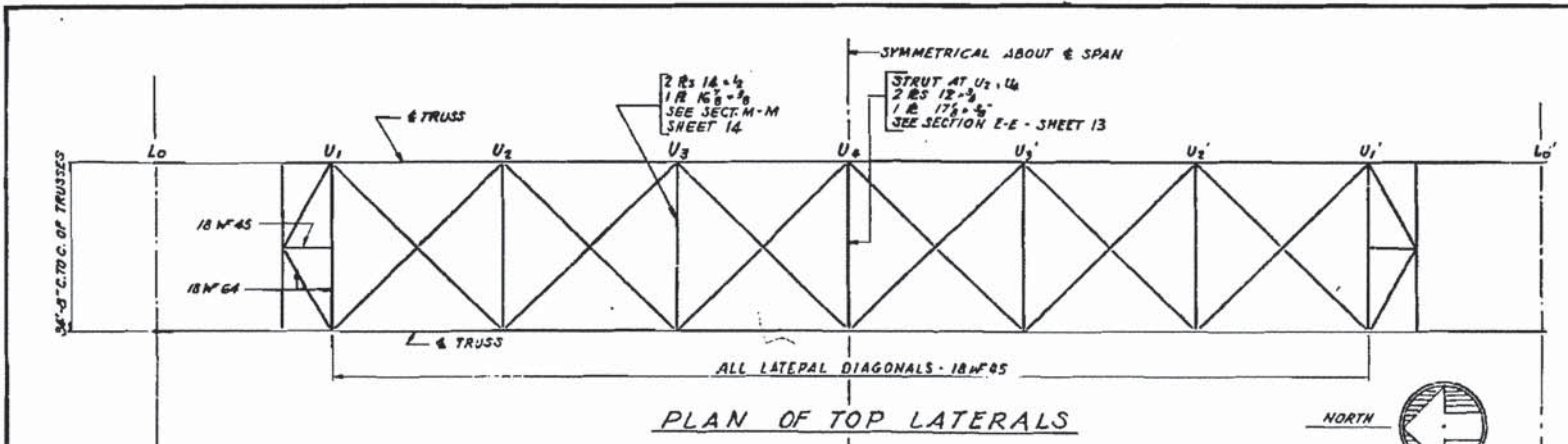
FILE NO. 2-81-5-1

ILLINOIS DIVISION OF HIGHWAYS
 CALUMET-SAG NAVIGATION PROJECT
 CHATHAM STREET HIGHWAY BRIDGE
 TRUSS ELEVATION & STRESS TABLE

ALFRED BENESCH & COMPANY. CONSULTING ENGINEERS
 10 SOUTH WABASH AVE CHICAGO, ILLINOIS

SCALE: AS NOTED DATE: 24 JUNE 1968

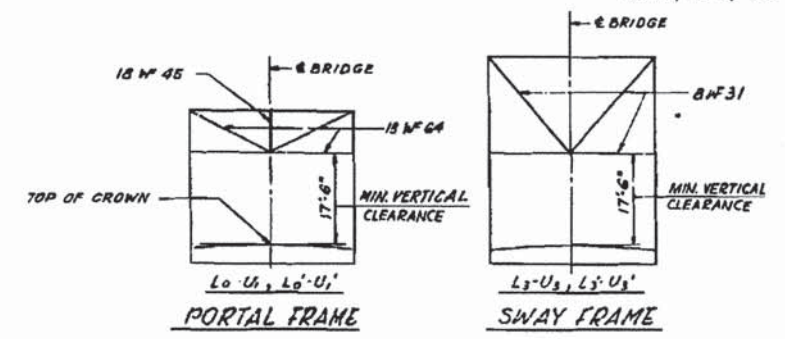
FOR INFORMATION ONLY



STRINGER	PANELS	XVC	XDL	TOTAL CAMBER
1 & 7	L ₀ -L ₁	3/8"	1/8"	1/2"
2 THRU 6	L ₁ -L ₂	3/8"	1/8"	NO CAMBER
1 & 7	L ₁₀ -L ₀	3/8"	1/8"	1/2"
2 THRU 6	L ₁ -L ₀	3/8"	1/8"	1/2"

FLOOR BEAM AT JOINT	L ₀	L ₁	L ₂	L ₃	L ₄	L ₁ '	L ₂ '	L ₁ '	L ₀ '
STRINGER 1 & 7	25.977	27.635	28.899	29.657	29.909	29.657	28.899	27.635	25.866
STRINGER 2 & 6	25.977	27.635	28.899	29.657	29.909	29.657	28.899	27.635	25.866
STRINGER 3 & 5	26.115	27.773	29.037	29.795	30.047	29.795	29.037	27.773	26.004
STRINGER 4	26.124	27.822	29.086	29.844	30.096	29.844	29.086	27.822	26.053

ELEVATIONS GIVEN ARE AFTER DEAD LOAD DEFLECTION



POINT	SIDE WALK CONCRETE	ROADWAY SLAB AND BEARING SURFACE	FLOOR STEEL	TRUSS STEEL	TOTAL
L ₀ OR L ₀ '	23.0	29.6	11.8	14.9	79.3
L ₁ OR L ₁ '	46.1	59.3	19.2	27.4	152.0
L ₂ OR L ₂ '	46.1	59.3	19.2	30.0	154.6
L ₃ OR L ₃ '	46.1	59.3	20.3	35.4	161.1
L ₄	46.1	59.3	19.2	31.6	156.2

TYPE	LOAD
UNIFORM LOAD	27.6
CONCENTRATED LOAD (MOMENT)	20.6
CONCENTRATED LOAD (SHEAR)	29.8
TRUCK LOADING	65.2
SIDEWALK	7.5

MEMBER	MOMENT (FT. KIPS)				REACTION (KIPS)				SECTION	GRADE OF STEEL
	DL	LL	I	TOTAL	DL	LL	I	TOTAL		
ROADWAY STRINGER	163	276	83	522	171	36.9	11.0	65.0	27#94	A36 ^B
SIDEWALK STRINGER	212 ^A	43	-	255	92.8 ^B	4.5	-	27.3	21#68	A36
INTERIOR FLOOR BEAM	765	705	211	1681	92.5	65.2	19.6	177.3	36#230	A440
END FLOOR BEAM	405	666	200	1271	48.9	61.3	18.5	129.2	36#230	A440
END FLOOR BEAM JACKING, FULL D.L.	-1756 ^C	-	-	-1756	635.1 ^D	-	-	635.1	36#230	A440

NOTES:
^AJACKING LOAD APPLIED AT 3'-0" FROM E TRUSS.
^BINCLUDES 10.0 KIPS FOR FUTURE L₄-U₄-U₄ MEMBERS.
^CCOMPOSITE BEAM
^DINCLUDES 0.72% W. PT. FOR FUTURE 12" Ø WATER MAIN

NOTES:
 FOR GENERAL NOTES SEE SHEET 2
 FOR ADDITIONAL NOTES SEE SHEET 13

ITEM	UNIT	QUANTITY
STRUCTURAL STEEL	LBS	418,750
STRUCTURAL STEEL (LOW ALLOY)	LBS	452,650

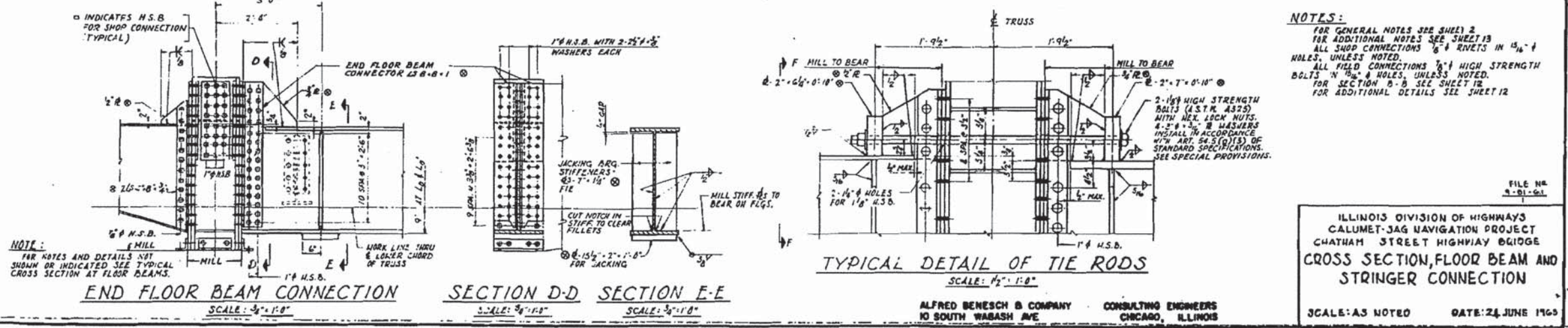
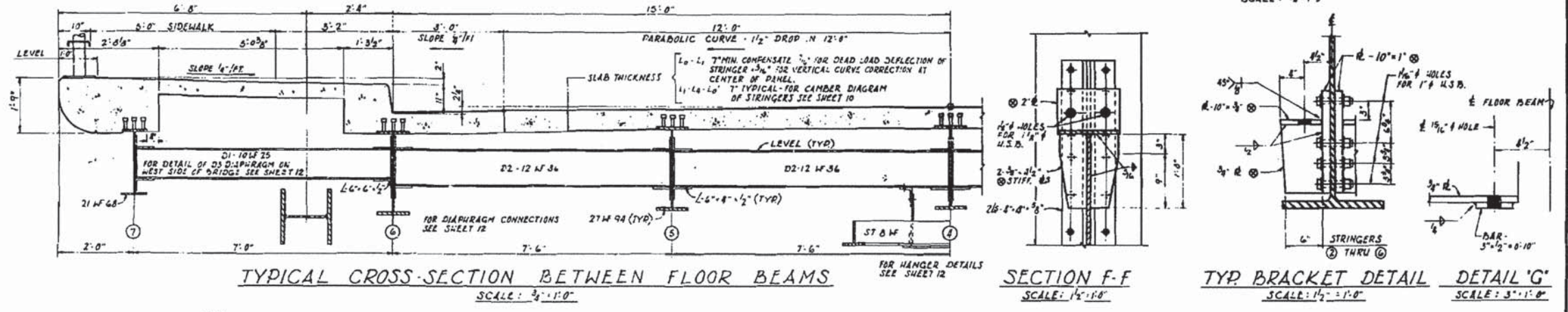
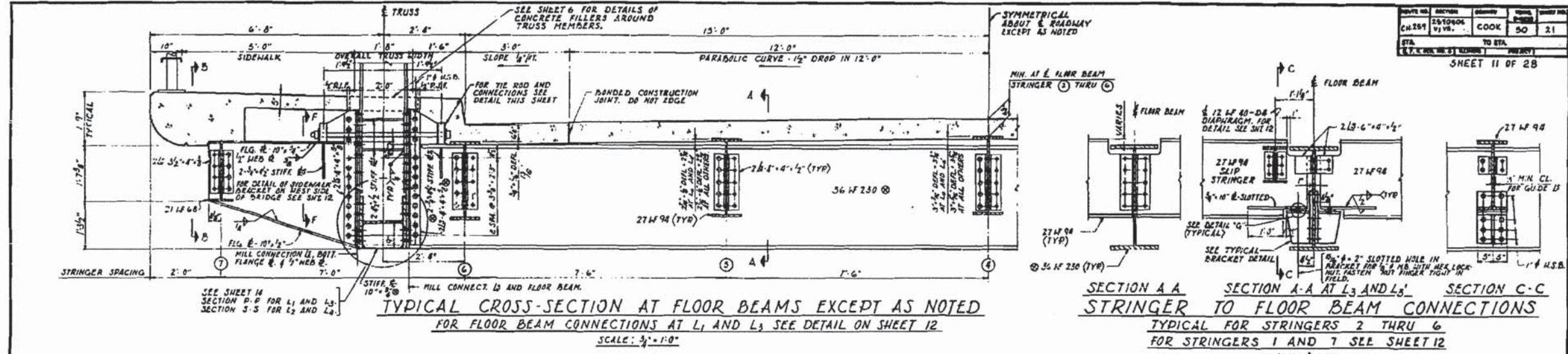
ILLINOIS DIVISION OF HIGHWAYS
 CALUMET-SAG NAVIGATION PROJECT
 CHATHAM STREET HIGHWAY BRIDGE
 FRAMING PLAN AND TOP OF STRINGER ELEVATIONS-SPAN 3

SCALE: AS NOTED DATE: 24 JUNE 1968

ALFRED BENESCH & COMPANY
 10 SOUTH WABASH AVE
 CONSULTING ENGINEERS
 CHICAGO, ILLINOIS

FOR INFORMATION ONLY

I:\CHIVPR\A\0020023534\Struct\vgm\016-5005-077-EP.dgn

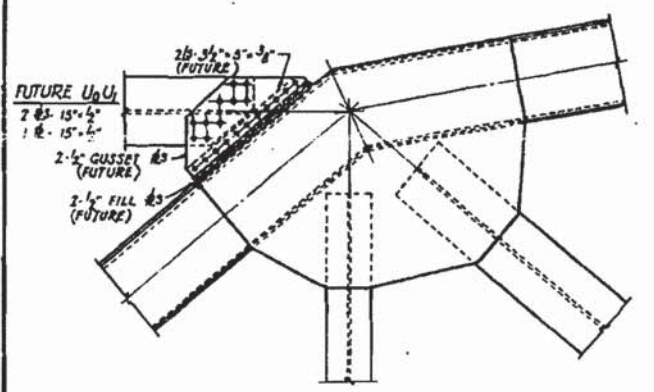


FOR INFORMATION ONLY

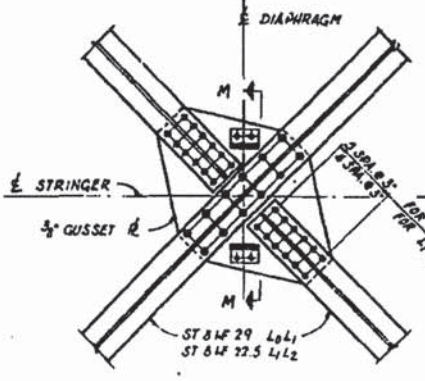
I:\CH\VP\1\0202023634\5\struct\1\016-5005-078-EP.dgn

LOCHNER H. W. LOCHNER, INC. 225 WEST WASHINGTON STREET 12 TH FLOOR CHICAGO, ILLINOIS 60606	USER NAME = FILE NAME = 016-5005-078-EP.dgn PLOT SCALE = PLOT DATE =	DESIGNED - CHECKED - DRAWN - CHECKED -	REVISED REVISED REVISED REVISED	STATE OF ILLINOIS DEPARTMENT OF TRANSPORTATION	EXISTING PLAN 25 - CHATHAM STREET BRIDGE STRUCTURE NO. 016-5005	MS 1090	SECTION 14-00164-00-BR	COUNTY COOK	TOTAL SHEETS 122	SHEET NO. 105
						SHEET NO.5-78 OF 95 SHEETS		CONTRACT NO. 61B58		ILLINOIS FED. AID PROJECT

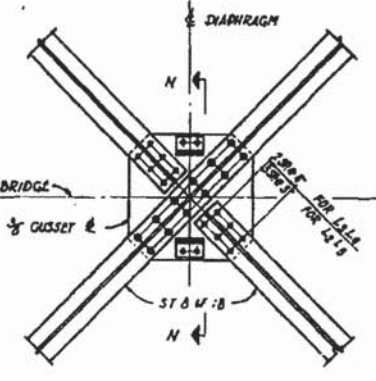
PROJECT NO.	SECTION	COUNTY	TOTAL SHEETS	SHEET NO.
CH259	AS 5000	COOK	50	22
DATE	BY	CHECKED	DESIGNED	DRAWN
12-1-61	M.S.	COOK	ALFRED BENECH	ALFRED BENECH



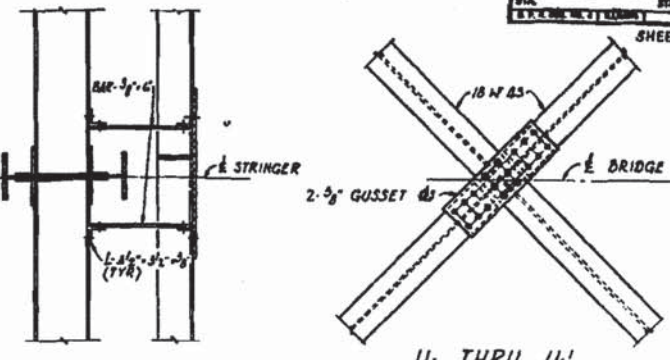
FUTURE U_0U_1 CONNECTION AT U_1 & U_1'
SCALE: $\frac{3}{4}'' = 1'-0''$



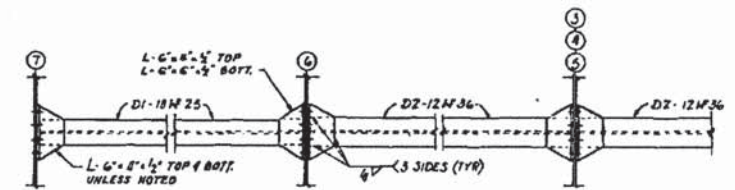
CONNECTION OF BOTTOM LATERAL BRACING
SCALE: $\frac{3}{4}'' = 1'-0''$



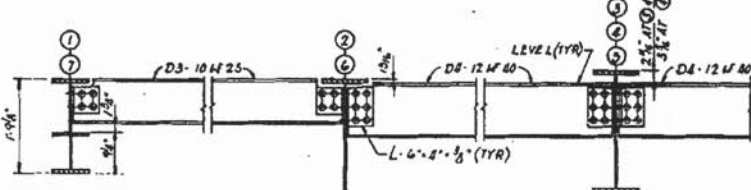
SECTION N-N (SIMILAR)
SCALE: $\frac{3}{4}'' = 1'-0''$



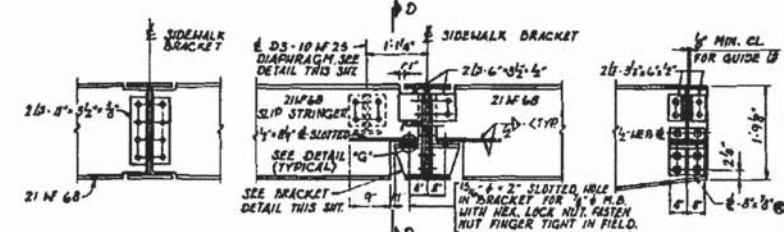
U_1 THRU U_1'
CONNECTION OF TOP LATERAL BRACING
SCALE: $\frac{3}{4}'' = 1'-0''$



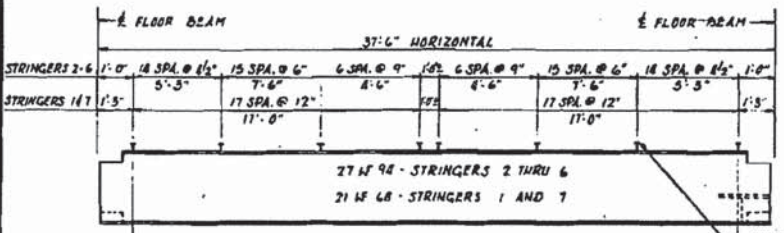
TYPICAL DIAPHRAGM CONNECTIONS
SCALE: $\frac{3}{4}'' = 1'-0''$



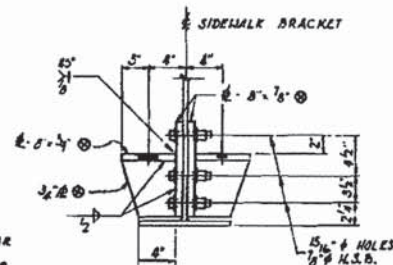
DIAPHRAGM CONNECTIONS AT L_3 AND L_3'
SCALE: $\frac{3}{4}'' = 1'-0''$



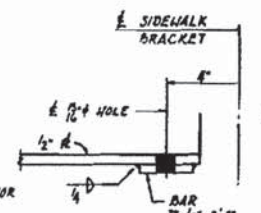
SECTION B-B SECTION B-B AT L_3 AND L_3' SECTION D-D
STRINGER TO SIDEWALK BRACKET CONNECTIONS
TYPICAL FOR STRINGERS 1 AND 7
FOR LOCATION OF SECT. B-B SEE SMT. II
SCALE: $\frac{3}{4}'' = 1'-0''$



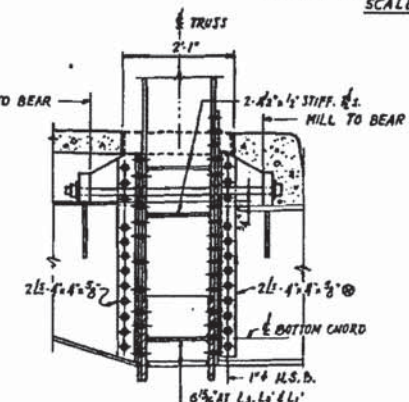
FOR DETAIL OF WELDED STUD SHEAR CONNECTOR SEE SHEET 7
BLOCK STRINGERS AS REQUIRED, SEE CONNECTION DETAILS
SHEAR CONNECTOR SPACING
NO SCALE



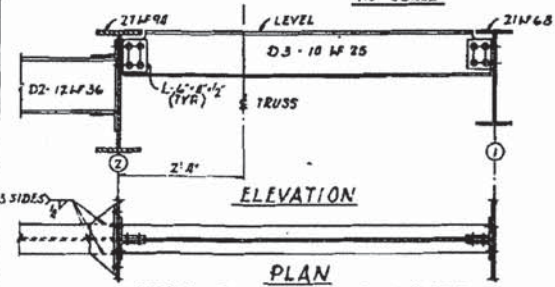
BRACKET DETAIL FOR STRINGERS 1 AND 7
SCALE: $\frac{1}{2}'' = 1'-0''$



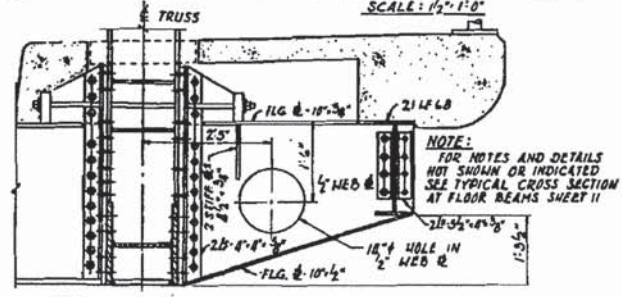
DETAIL 'G'
SCALE: $5'' = 1'-0''$



FLOOR BEAM CONNECTION AT L_1 AND L_3
SCALE: $\frac{1}{2}'' = 1'-0''$



PLAN DIAPH. D3 AT TYP. CROSS SECTION BETWEEN FL. BMS
SCALE: $\frac{3}{4}'' = 1'-0''$



DETAIL OF SIDEWALK BRACKET ON WEST SIDE OF BRIDGE
SCALE: $\frac{3}{4}'' = 1'-0''$

NOTES:
FOR GENERAL NOTES SEE SHEET 2
FOR ADDITIONAL NOTES SEE SHEET 13

NOTE:
FOR DETAILS NOT SHOWN OR NOTED SEE TYPICAL CROSS-SECTION ON SHEET 11

ILLINOIS DIVISION OF HIGHWAYS
CALUMET-SAG NAVIGATION PROJECT
CHATHAM STREET HIGHWAY BRIDGE
MISCELLANEOUS TRUSS DETAILS

SCALE: AS NOTED DATE: 24 JUNE 1968

ALFRED BENECH & COMPANY
10 SOUTH WABASH AVE
CONSULTING ENGINEERS
CHICAGO, ILLINOIS

FOR INFORMATION ONLY

I:\CHN\VP\A\20020236341\Struct\1\gym\016-5005-079-EP.dgn

LOCHNER
H. W. LOCHNER, INC.
225 WEST WASHINGTON STREET
12 TH FLOOR
CHICAGO, ILLINOIS 60606

USER NAME =	DESIGNED -	REVISED
FILE NAME = 016-5005-079-EP.dgn	CHECKED -	REVISED
PLOT SCALE =	DRAWN -	REVISED
PLOT DATE =	CHECKED -	REVISED

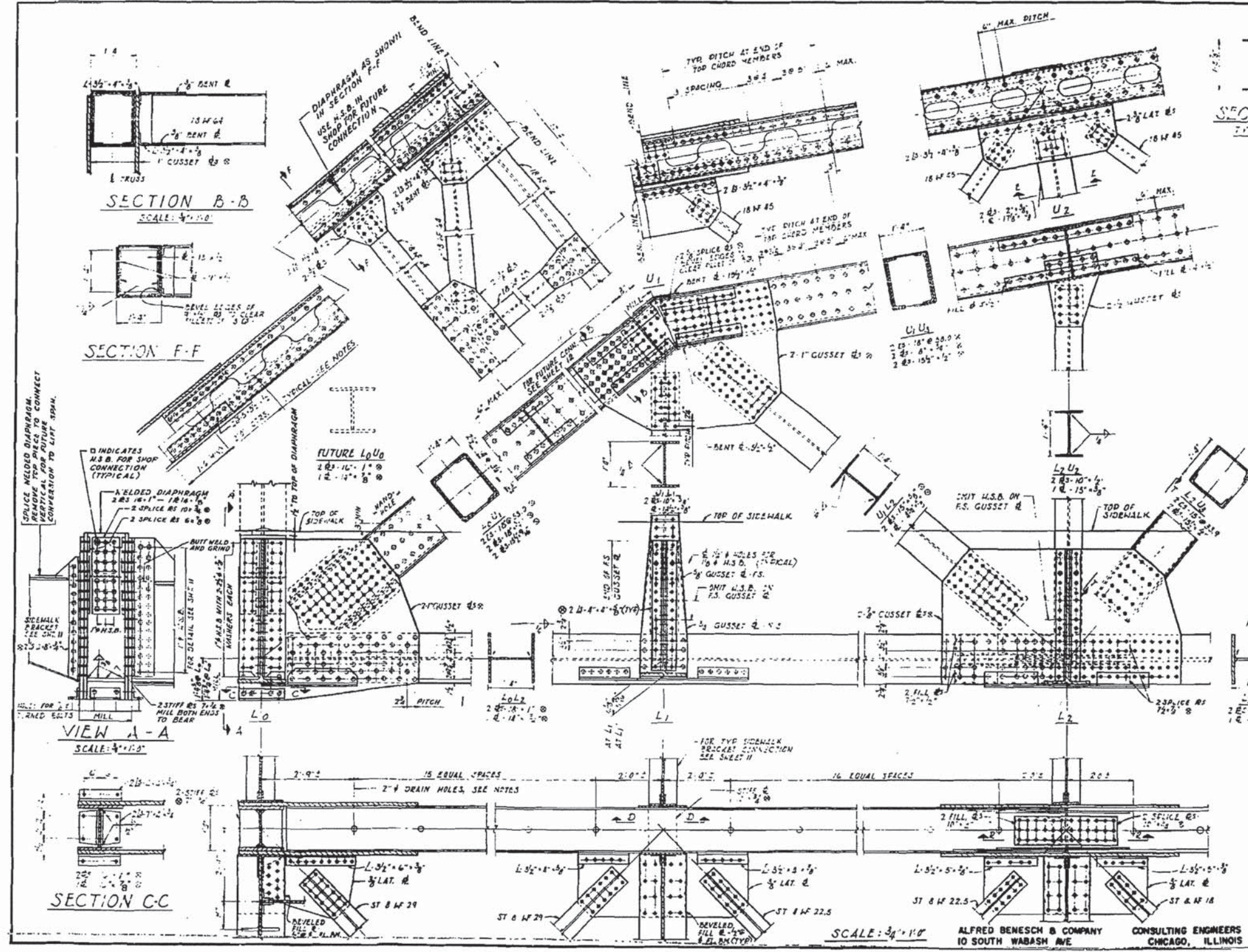
STATE OF ILLINOIS
DEPARTMENT OF TRANSPORTATION

EXISTING PLAN 26 - CHATHAM STREET BRIDGE
STRUCTURE NO. 016-5005

SHEET NO. S-79 OF 95 SHEETS

MS	SECTION	COUNTY	TOTAL SHEETS	SHEET NO.
1090	14-00164-00-BR	COOK	122	106
			CONTRACT NO. 61B58	
ILLINOIS FED. AID PROJECT				

PROJECT NO.	SECTION	COUNTY	TOTAL SHEETS	SHEET NO.
C-259	2510408	COOK	50	28
STA.	TO STA.		PROJECT	
F.P. REC. NO. 41	ILLINOIS		SHEET 13 OF 28	



NOTES:

FOR GENERAL NOTES SEE SHEET 2.

ALL GUSSET CONNECTIONS 3/8" RIVETS 4 1/2" x 4" HOLES UNLESS NOTED.

ALL FIELD CONNECTIONS 3/4" HIGH STRENGTH BOLTS (A.S.T.M. IN 1/2" HOLES UNLESS NOTED).

Ø DESIGNATES HIGH STRENGTH LOW ALLOY STEEL:

A.S.T.M. - A 242 FOR RIVETED SECTIONS.

A.S.T.M. - A 321 FOR WELDED SECTIONS.

ALL OTHER STEEL SHALL BE CARBON STEEL.

A.S.T.M. - A 36

FOR TYPICAL HANDHOLES SEE SHEET 16.

FOR FLOOR BEAM CONNECTIONS SEE SHEET 11.

FOR DIAPHRAGM DETAILS AND CONNECTIONS SEE SHEET 17.

FOR TRUSS BEARING DETAILS SEE SHEET 15.

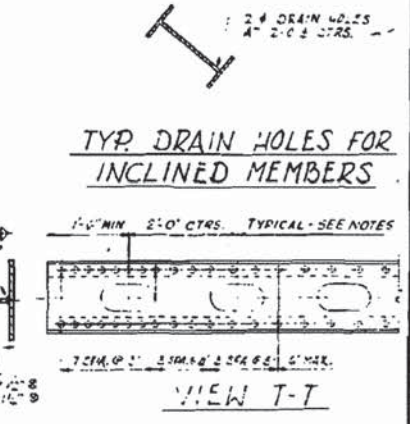
FOR SECTIONS D-D AND D-D SEE SHEET 14.

DRAIN HOLES IN HORIZONTAL SECTIONS FORMING HORIZONTAL OR NEARLY HORIZONTAL TRUSHS AND OTHER POINTS WHERE WATER MAY COLLECT SHALL BE ADEQUATELY DRAINED. DRAIN HOLES WHERE INDICATED IN THE DETAILS, SHALL BE WELDED. DRAIN HOLES SHALL BE LOCATED ON DETAILS WITH DUE REGARD TO MAINTAINING UNWELDED VEE SECTIONS OF MEMBERS.

FOR CONCRETE MILLERS AROUND TRUSS MEMBERS SEE SHEET 6.

TRUSS HANDHOLES SHALL BE ADJUSTED SO THAT BOTTOM EDGE OF OPENING IS MIN. 3" VERTICALLY ABOVE TOP OF SIDEWALK.

ALL FILL BS WHICH WOULD OTHERWISE BE JOINED LOOSE SHALL BE SHOP WELDED IN PLACE BEFORE BEAMING.



FILE NO. 3-11-61

ILLINOIS DIVISION OF HIGHWAYS
CALUMET-SAG NAVIGATION PROJECT
CHATHAM STREET HIGHWAY BRIDGE
TRUSS DETAILS L0-L2

SCALE: AS NOTED DATE: 24 JUNE 1963

ALFRED BENESCH & COMPANY
10 SOUTH WABASH AVE
CONSULTING ENGINEERS
CHICAGO, ILLINOIS

FOR INFORMATION ONLY

I:\CHIVPR\A\02020236341\Structure\vgm\016-5005-EP.dgn

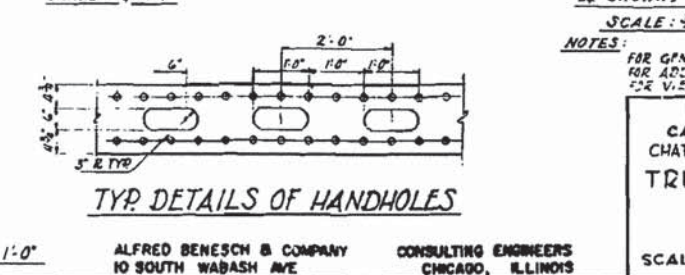
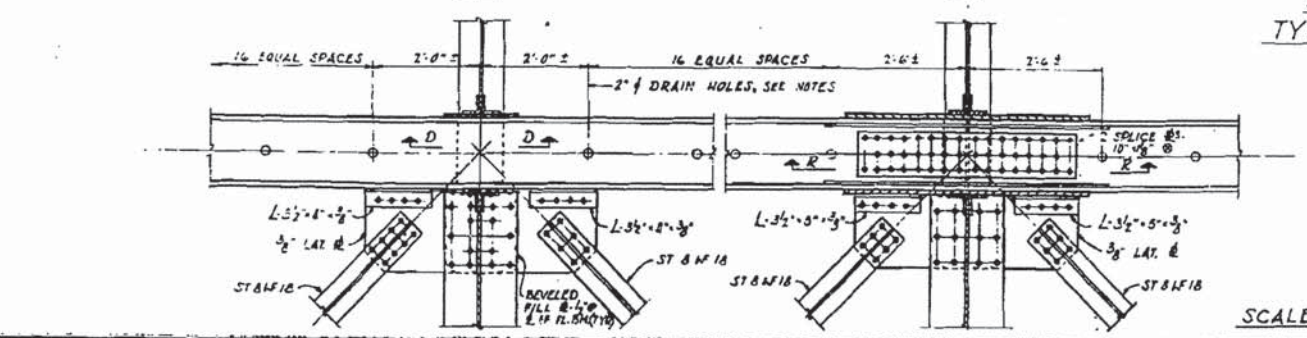
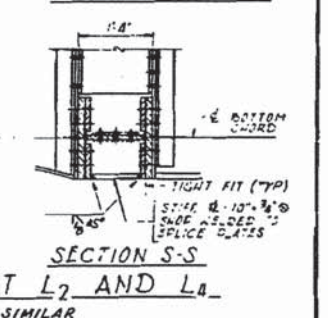
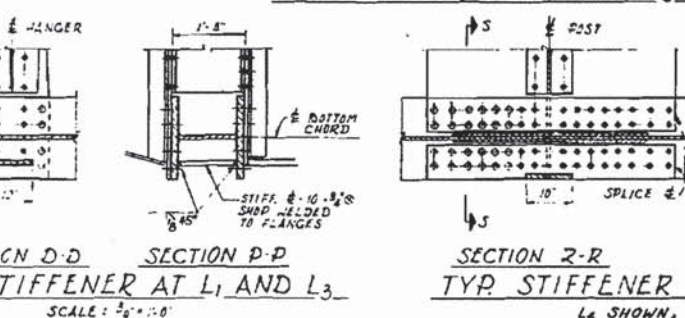
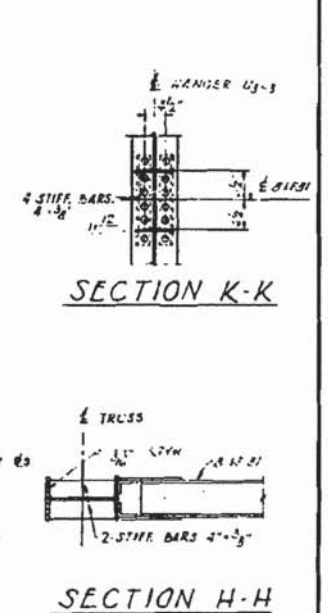
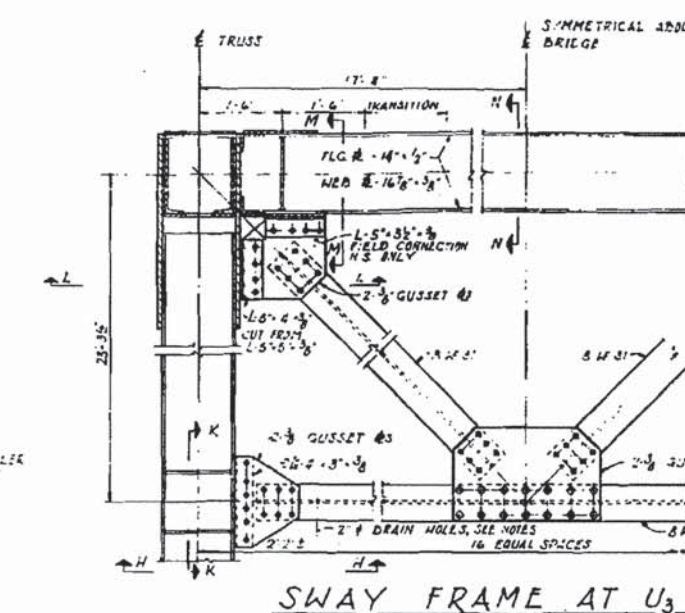
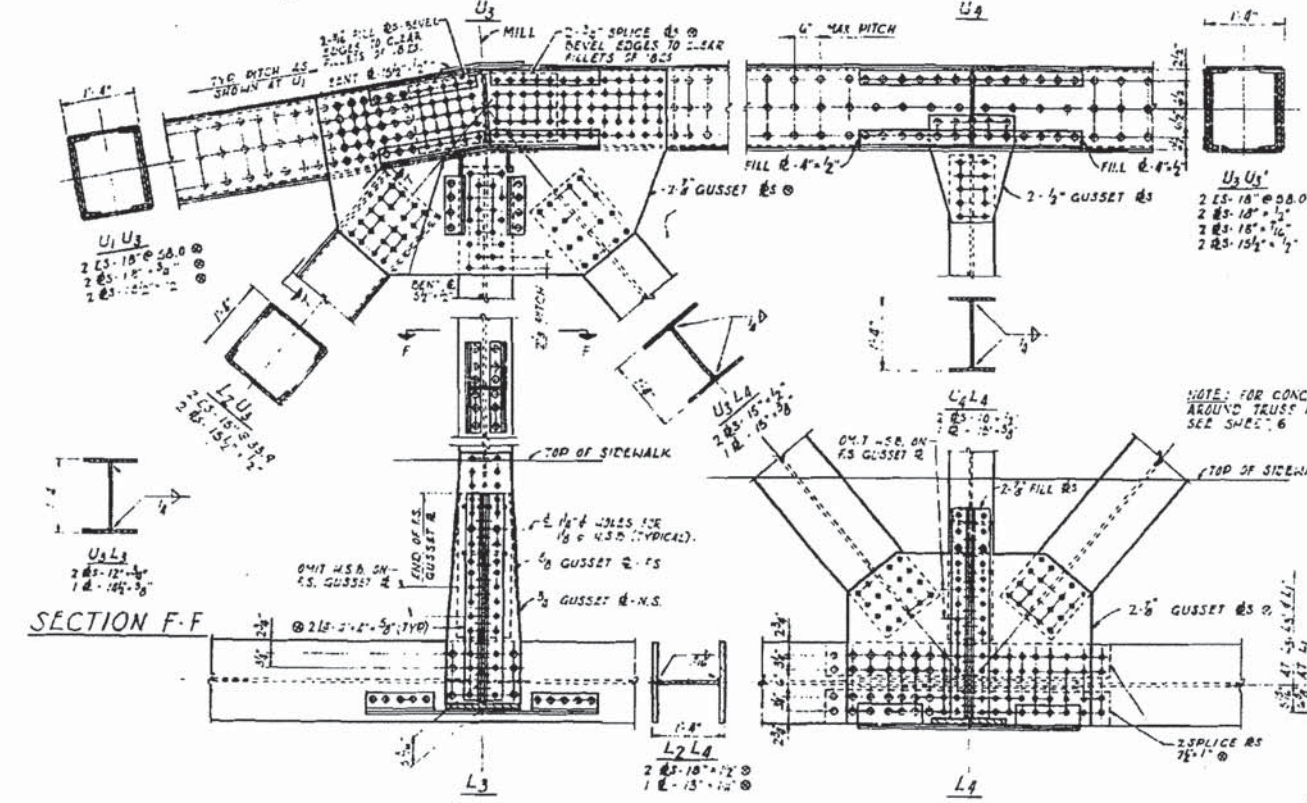
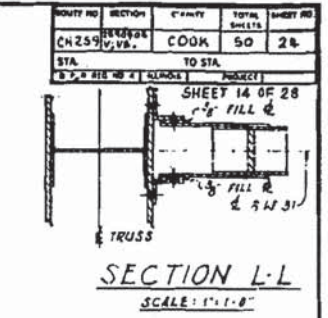
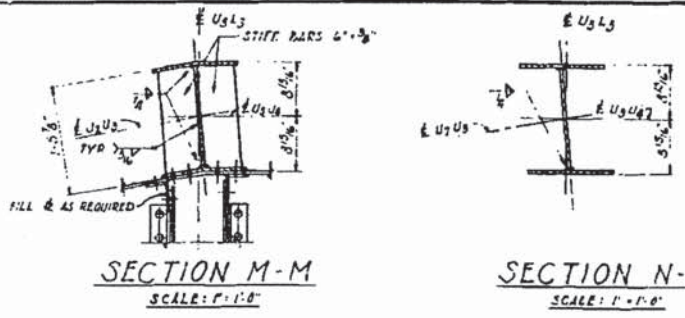
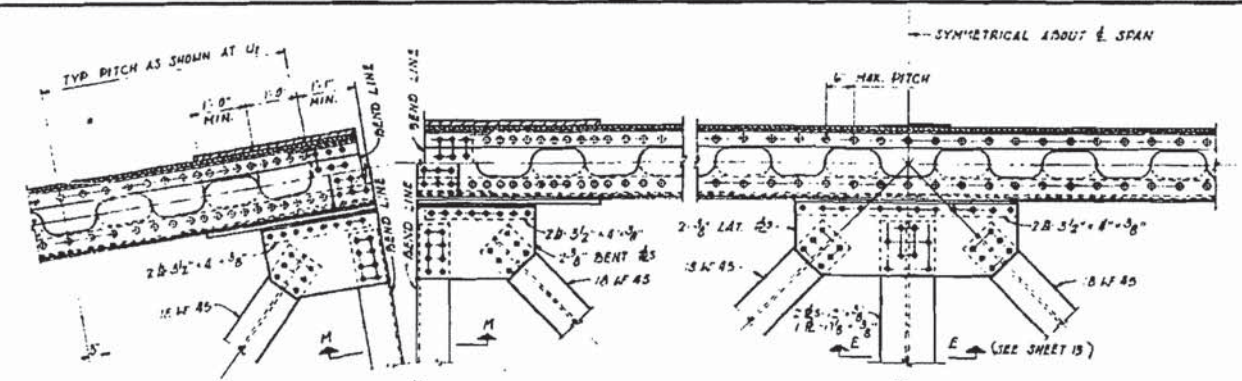
LOCHNER
H. W. LOCHNER, INC.
225 WEST WASHINGTON STREET
12 TH FLOOR
CHICAGO, ILLINOIS 60606

USER NAME =	DESIGNED -	REVISED
FILE NAME = 016-5005-080-EP.dgn	CHECKED -	REVISED
PLOT SCALE =	DRAWN -	REVISED
PLOT DATE =	CHECKED -	REVISED

STATE OF ILLINOIS
DEPARTMENT OF TRANSPORTATION

EXISTING PLAN 27 - CHATHAM STREET BRIDGE
STRUCTURE NO. 016-5005
SHEET NO.5-80 OF 95 SHEETS

MS	SECTION	COUNTY	TOTAL SHEETS	SHEET NO.
1090	14-00164-00-BR	COOK	122	107
			CONTRACT NO. 61B58	
ILLINOIS FED. AID PROJECT				

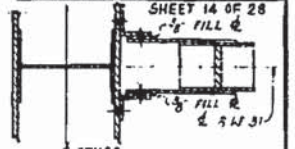


NOTES:
 FOR GENERAL NOTES SEE SHEET 2
 FOR ADDITIONAL NOTES SEE SHEET 18
 FOR VIEW T-T SEE SHEET 18

ILLINOIS DIVISION OF HIGHWAYS
 CALUMET-SAG NAVIGATION PROJECT
 CHATHAM STREET HIGHWAY BRIDGE
 TRUSS DETAILS L2-L4

SCALE: AS NOTED DATE: 24 JUNE 1963

ROUTE NO.	SECTION	COUNTY	TOTAL SHEETS	SHEET NO.
CH259	BRIDGE	COOK	50	28
STA.	TO STA.		PROJECT	
1+00	1+00		CHATHAM STREET BRIDGE	



I:\CHIVPR\A\00000236341\Struct\vgm\016-5005-081-EP.dgn

LOCHNER
 H. W. LOCHNER, INC.
 225 WEST WASHINGTON STREET
 12 TH FLOOR
 CHICAGO, ILLINOIS 60606

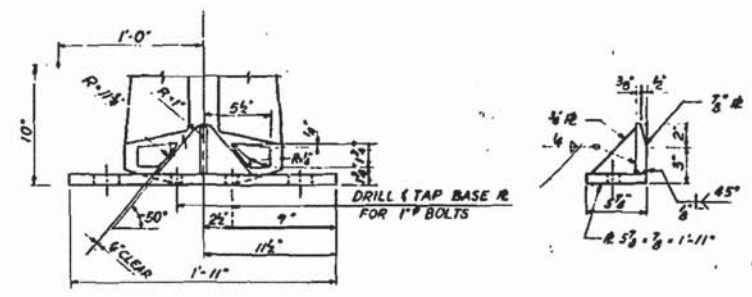
USER NAME =	DESIGNED -	REVISED
FILE NAME = 016-5005-081-EP.dgn	CHECKED -	REVISED
PLOT SCALE =	DRAWN -	REVISED
PLOT DATE =	CHECKED -	REVISED

STATE OF ILLINOIS
 DEPARTMENT OF TRANSPORTATION

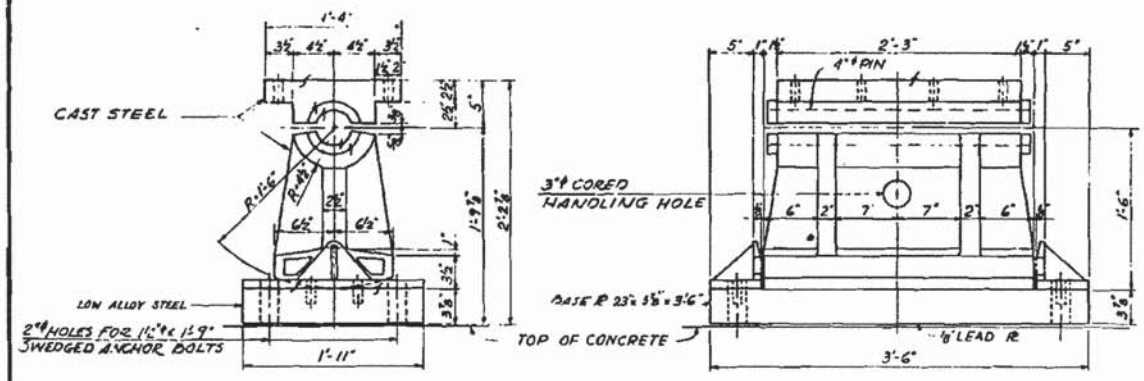
EXISTING PLAN 28 - CHATHAM STREET BRIDGE
 STRUCTURE NO. 016-5005

MS	SECTION	COUNTY	TOTAL SHEETS	SHEET NO.
1090	14-00164-00-BR	COOK	122	108
			CONTRACT NO. 61B58	
ILLINOIS FED. AID PROJECT				

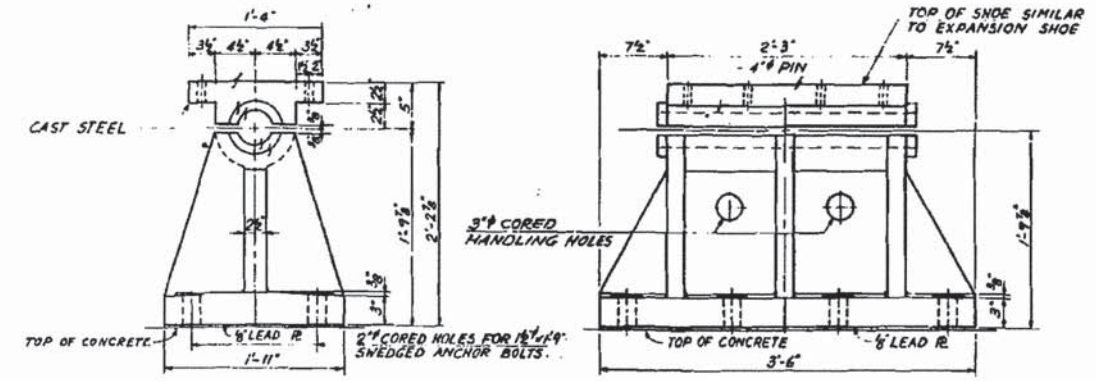
FOR INFORMATION ONLY



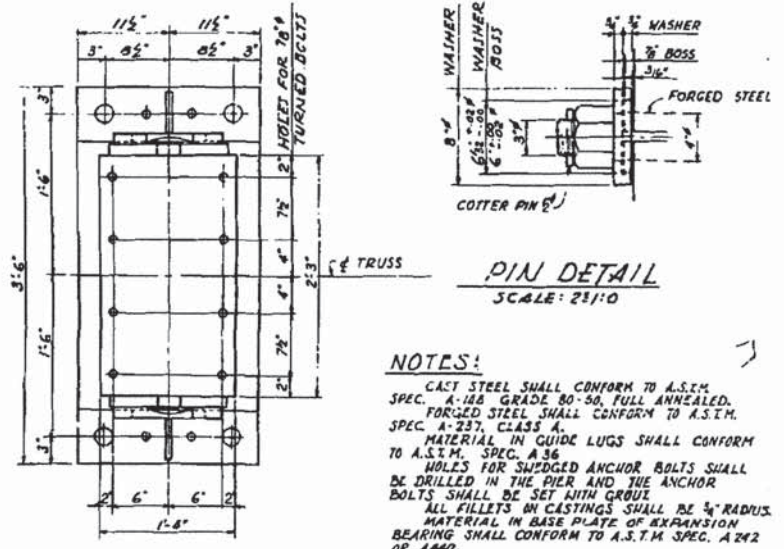
DETAIL OF GUIDE LUGS
SCALE: 2"=1'-0"



EXPANSION SHOES AT POINT L0'
SCALE: 1/2"=1'-0"

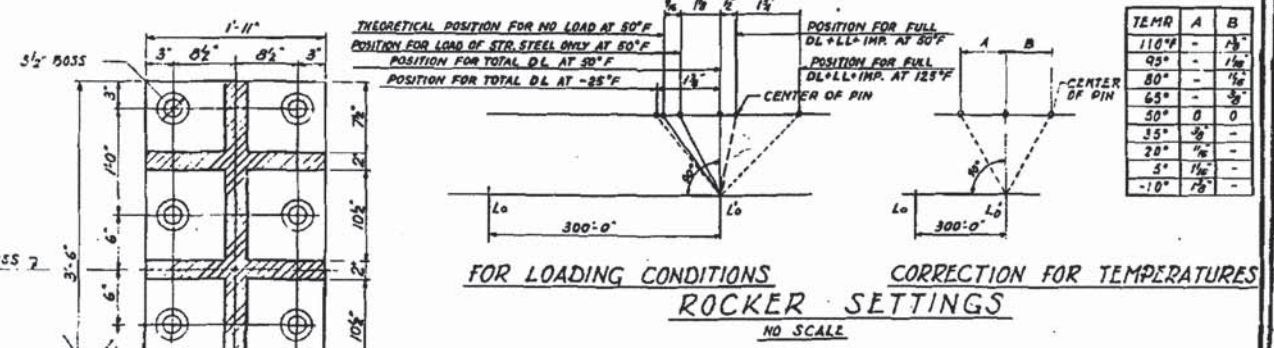


FIXED SHOES AT POINT L0'
SCALE: 1/2"=1'-0"



PIN DETAIL
SCALE: 2 1/2"=1'-0"

NOTES:
CAST STEEL SHALL CONFORM TO A.S.T.M. SPEC. A-148 GRADE 80-90, FULL ANNEALED.
FORGED STEEL SHALL CONFORM TO A.S.T.M. SPEC. A-237, CLASS A.
MATERIAL IN GUIDE LUGS SHALL CONFORM TO A.S.T.M. SPEC. A-36.
HOLES FOR SWEDGED ANCHOR BOLTS SHALL BE DRILLED IN THE PIER AND THE ANCHOR BOLTS SHALL BE SET WITH GROUT.
ALL FILLETS IN CASTINGS SHALL BE 3/4\"/>



FOR LOADING CONDITIONS
CORRECTION FOR TEMPERATURES
ROCKER SETTINGS
NO SCALE

ALFRED BENESCH & COMPANY
10 SOUTH WABASH AVE
CONSULTING ENGINEERS
CHICAGO, ILLINOIS

ILLINOIS DIVISION OF HIGHWAYS
CALUMET-SAG NAVIGATION PROJECT
CHATHAM STREET HIGHWAY BRIDGE
TRUSS BEARING DETAILS
SCALE: AS NOTED
DATE: 24 JUNE 1963

FOR INFORMATION ONLY

I:\CHIVPR\A\02020236341\Struct\vdgn\016-5005-082-EP.dgn

PROJECT NO.	REVISION	DATE	BY	CHECKED
CH259	V:VB	COOK	SO	2G
STA.	TO STA.			
1+7.8	1+11.2			

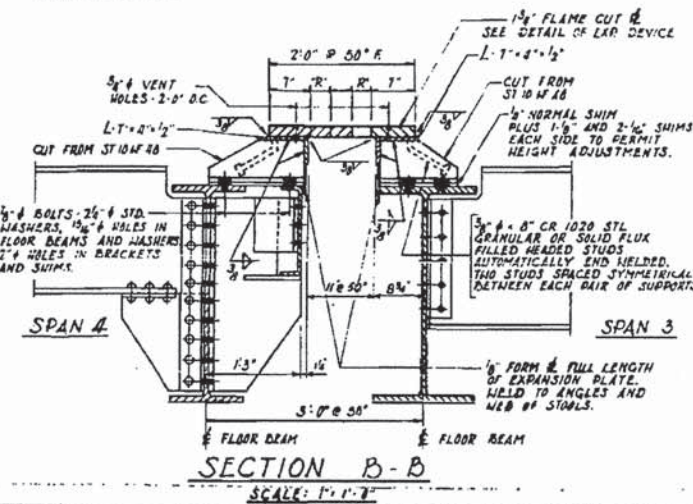
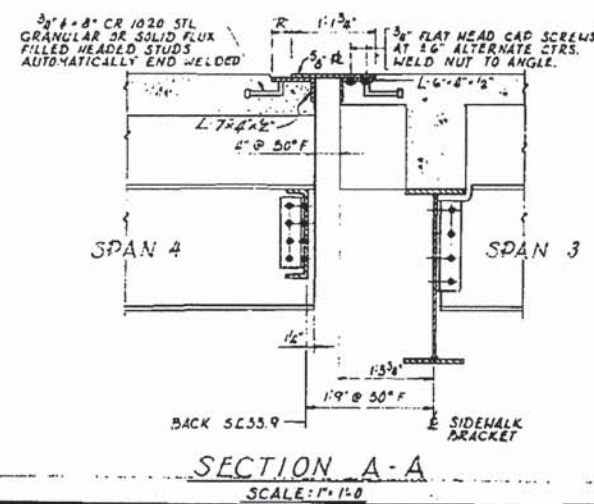
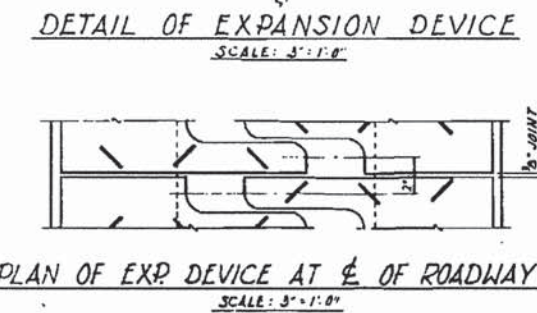
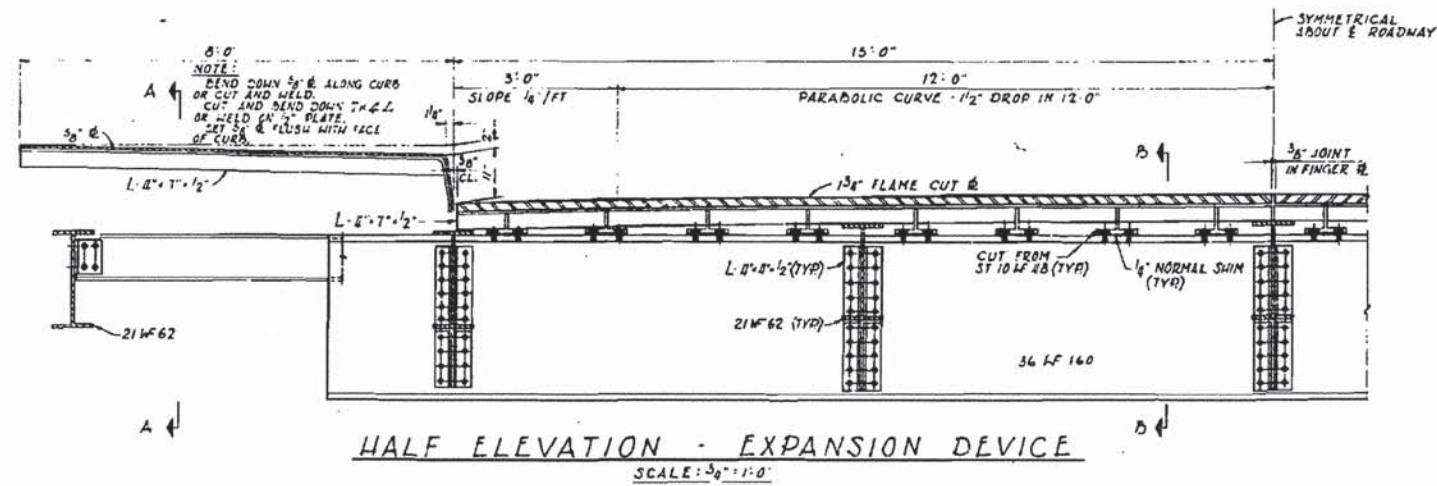
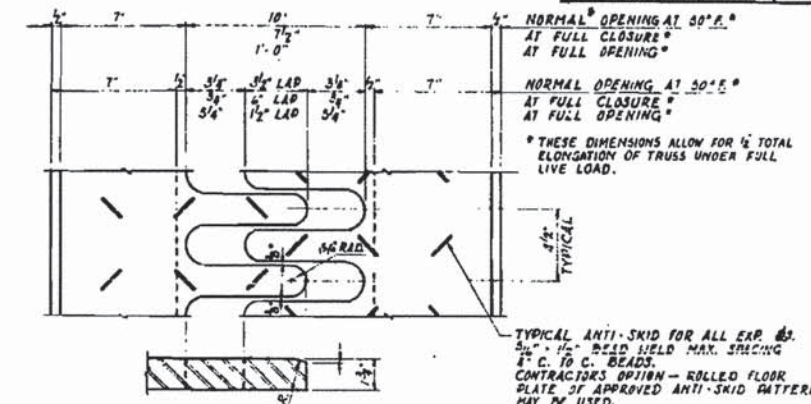
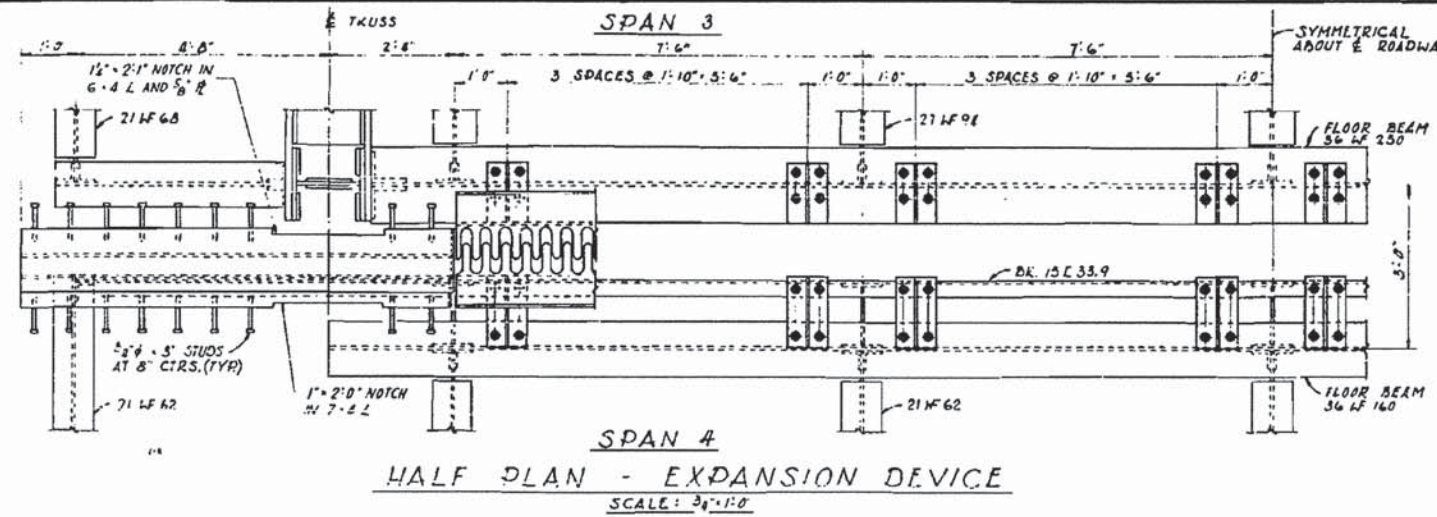


TABLE OF "R" DIMENSIONS

TEMP.	"R"
110°	1 1/2"
90°	2 1/4"
70°	2 3/4"
50°	3 1/4"
30°	3 3/4"
10°	4 1/4"

NOTES

- A-36 STEEL SHALL BE USED FOR ALL PARTS EXCEPT HEADED STUD ANCHORS.
- ROADWAY EXPANSION DEVICE SHALL BE IN TWO PIECES AND SHALL BE FABRICATED AND ERECTED TO CONFORM TO ROADWAY CROWN AND GRADE.
- ASSEMBLE IN SHOP FOR INSPECTION.
- ROADWAY EXPANSION PLATES SHALL BE FLAME CUT 3/8" AND ALL TUBES SHALL BE 15/16" RADIUS.
- ALL SURFACES UNACCESSIBLE AFTER ERECTION SHALL RECEIVE TWO SHOP COATS OF RED LEAD PAINT, EXCEPT 3/4" DIAMETER X 8" STUD ANCHORS.
- ROADWAY EXPANSION DEVICE SHALL BE FABRICATED WITH 1/4" NORMAL SKIN PLUS ONE 1/8" AND TWO 1/16" TEENS TO PERMIT HEIGHT ADJUSTMENTS BETWEEN BRACKETS AND FLOOR BEAMS.
- USE 7/8" DIAMETER HIGH TENSILE BOLTS.
- EXPANSION DEVICE QUANTITIES ARE INCLUDED IN QUANTITIES OF STRUCTURAL STEEL. ESTIMATED WEIGHT = 4050 LBS.

USE THESE VALUES OF "R" FOR TEMPERATURES EXISTING AT THE TIME OF ADJUSTMENT OF EXPANSION DEVICE.

FILE NO. 9-B-6.1

ILLINOIS DIVISION OF HIGHWAYS
CALUMET-SAG NAVIGATION PROJECT
CHATHAM STREET HIGHWAY BRIDGE
EXPANSION DEVICE

ALFRED BENESCH & COMPANY
10 SOUTH WABASH AVE
CONSULTING ENGINEERS
CHICAGO, ILLINOIS

SCALE: AS NOTED DATE: 24 JUNE 1963

FOR INFORMATION ONLY

I:\CH\PRJ\020008\016\15\loc\16\16-5005-083-EP.dgn

LOCHNER
H. W. LOCHNER, INC.
225 WEST WASHINGTON STREET
12 TH FLOOR
CHICAGO, ILLINOIS 60606

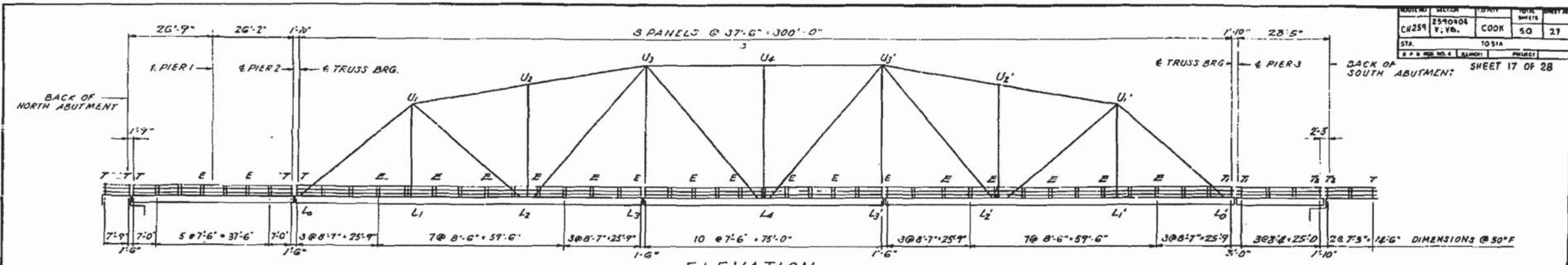
USER NAME =	DESIGNED -	REVISED -
FILE NAME = 016-5005-083-EP.dgn	CHECKED -	REVISED -
PLOT SCALE =	DRAWN -	REVISED -
PLOT DATE =	CHECKED -	REVISED -

STATE OF ILLINOIS
DEPARTMENT OF TRANSPORTATION

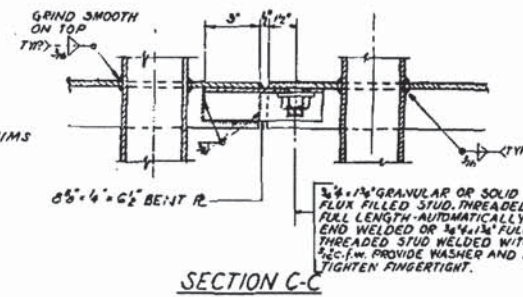
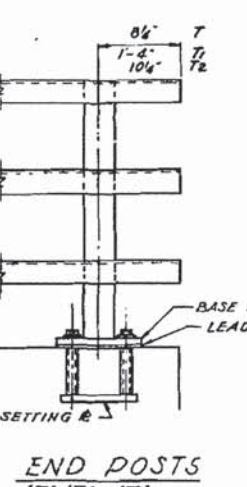
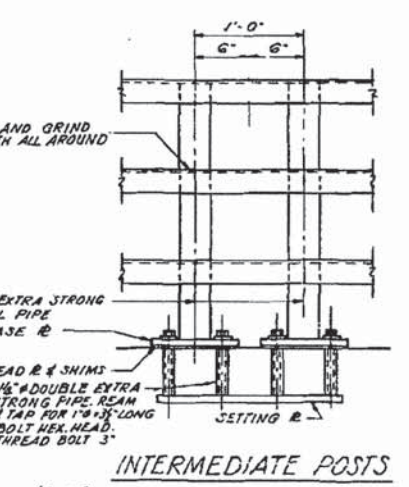
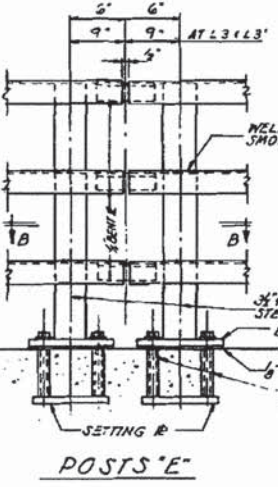
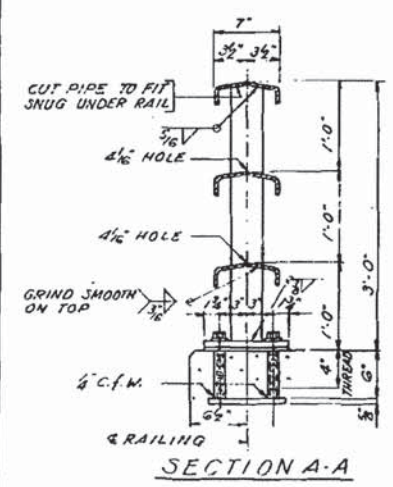
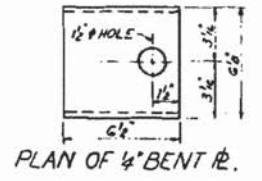
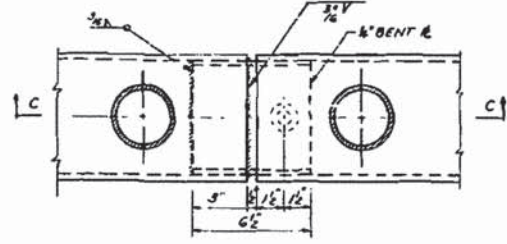
EXISTING PLAN 30 - CHATHAM STREET BRIDGE
STRUCTURE NO. 016-5005

SHEET NO.5-83 OF 95 SHEETS

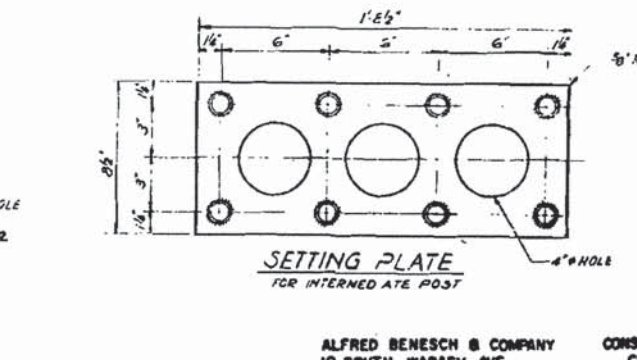
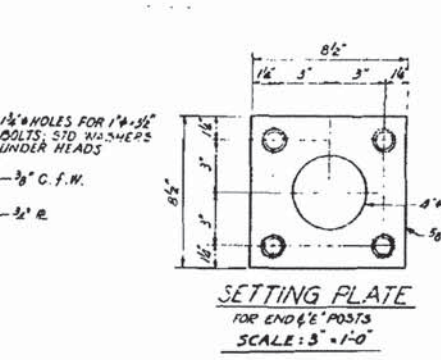
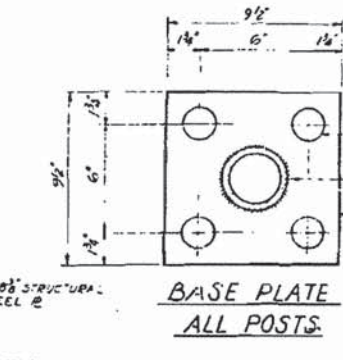
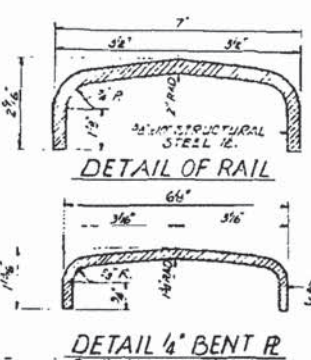
MS	SECTION	COUNTY	TOTAL SHEETS	SHEET NO.
1090	14-00164-00-BR	COOK	122	110
			CONTRACT NO. 61B58	
ILLINOIS FED. AID PROJECT				



ELEVATION



NOTES:
ALL DIMENSIONS ARE HORIZONTAL AND NOT TRUE DIMENSIONS ALONG RAILING.
RAIL SHALL BE FABRICATED AND ERECTED TO CONFORM TO PROFILE GRADE OF ROADWAY.
RAIL POSTS SHALL BE TRULY VERTICAL.
WELDING OF RAIL POSTS TO HORIZONTAL MEMBERS AND BASE PLATES SHALL BE CONTINUOUS WELDS ALL AROUND.
RAIL POSTS SHALL CONFORM TO THE STANDARD SPECIFICATION FOR WELDED AND SEAMLESS STEEL PIPE A.S.T.M. A 53 WITH MINIMUM YIELD POINT OF 30,000 P.S.I.
HANDRAIL SHALL BE GIVEN ONE SHOP COAT OF RED LEAD PAINT AND TWO FIELD COATS OF ALUMINUM PAINT. SEE SPECIFICATIONS.
SHIM PLATES FOR RAIL POSTS: FURNISH SHIMS CONSISTING OF ONE 3" SHIM AND TWO 2" SHIMS AT 50% OF RAIL POSTS FOR VERTICAL ADJUSTMENT OF POSTS.
SIZE OF SHIM PLATES, LEAD PLATES AND SPACING OF HOLES SHALL BE SAME AS FOR BASE PLATES OF POSTS.
AFTER ERECTION ALL BOLTS AND WASHERS SHALL BE SPOT PAINTED WITH ONE COAT OF RED LEAD AND TWO COATS OF ALUMINUM PAINT.



BILL OF MATERIAL

ITEM	UNIT	QUANTITY
METAL HANDRAIL	LIN. FT.	816

FILE NO. 4-11-61

ILLINOIS DIVISION OF HIGHWAYS
CALUMET-SAG NAVIGATION PROJECT
CHATHAM STREET HIGHWAY BRIDGE
HANDRAIL DETAILS

ALFRED BENESCH & COMPANY CONSULTING ENGINEERS
10 SOUTH WABASH AVE CHICAGO, ILLINOIS

SCALE: AS NOTED DATE: 24 JUNE 1965

FOR INFORMATION ONLY

LOCHNER
H. W. LOCHNER, INC.
225 WEST WASHINGTON STREET
12 TH FLOOR
CHICAGO, ILLINOIS 60606

USER NAME	DESIGNED	REVISED
016-5005-884-EP.dgn	CHECKED	REVISED
	DRAWN	REVISED
	CHECKED	REVISED

STATE OF ILLINOIS
DEPARTMENT OF TRANSPORTATION

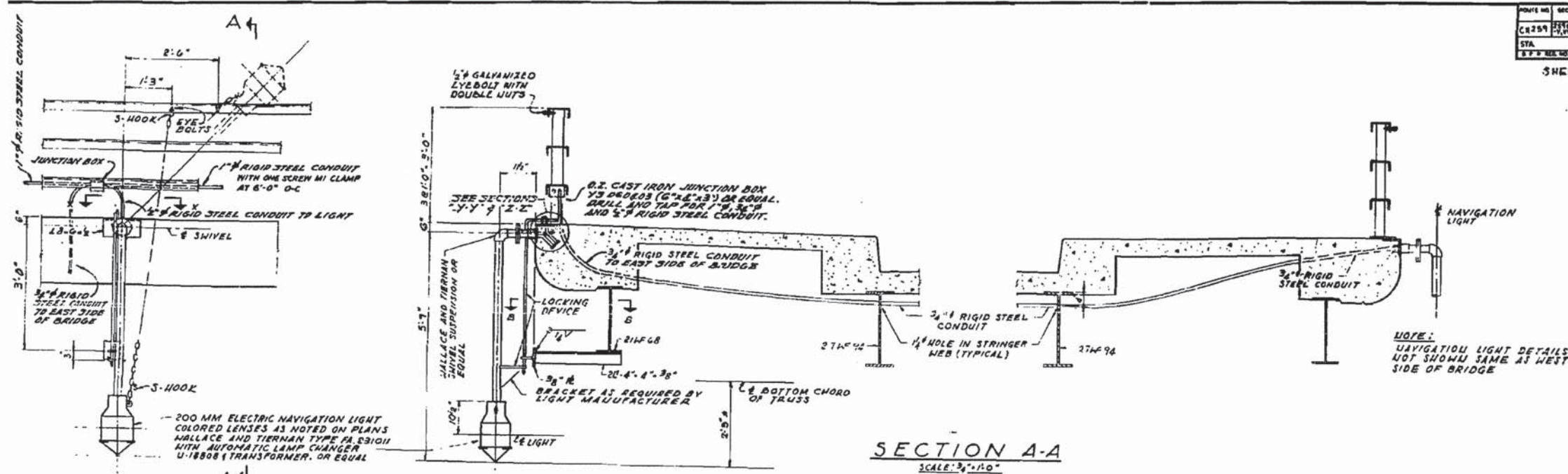
EXISTING PLAN 31 - CHATHAM STREET BRIDGE
STRUCTURE NO. 016-5005

MS	SECTION	COUNTY	TOTAL SHEETS	SHEET NO.
1090	14-00164-00-BR	COOK	122	111
			CONTRACT NO. 61B58	
ILLINOIS FED. AID PROJECT				

I:\CH\VP\1\0202023634\5\struct\dgn\016-5005-884-EP.dgn

PROJECT NO.	SECTION	COUNTY	TOTAL SHEETS	SHEET NO.
016-5005	14-00164-00-BR	COOK	122	113
STA.	TO STA.		PROJECT	
8+7.7	11+0.0		BRIDGE	

SHEET 17 OF 28



ELEVATION NAVIGATION LIGHTS
SCALE: 3/4" = 1'-0"

NOTE:
NAVIGATION LIGHT DETAILS NOT SHOWN SAME AT WEST SIDE OF BRIDGE

GENERAL NOTES

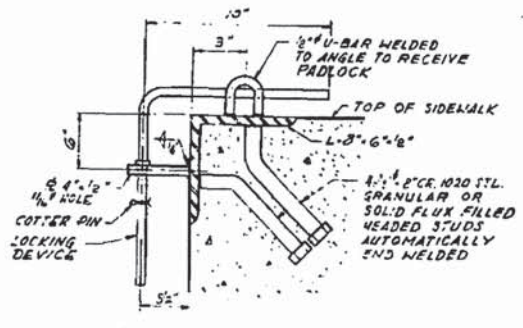
ALL JUNCTION BOXES SHALL BE CAST IRON AND SHALL BE 12" X 12" SIZES (6" X 6" X 3") OR EQUAL, DRILLED AND TAPPED FOR 1" RIGID STEEL CONDUIT. SEE PLAN SHEET 18. ANGLES AND PLATES USED IN NAVIGATION LIGHT ASSEMBLY SHALL BE A.S.T.M. A36 STEEL.

CONTROL CABINET SHALL BE CAST ALUMINUM, 18" X 8" X 6" CABINET SHALL BE COMPLETE WITH INTERIOR MOUNTING BUTTON, DRILLED AND TAPPED CONDUIT ENTRANCES FOR 1" RIGID STEEL CONDUIT, HUB FOR PADLOCK AND HINGED COVER WITH 2" VENT WITH WEATHERPROOF CLIPPING. CABINET SHALL BE LOCATED ON THE WEST FACE OF THE WEST COLUMN OF PIER 3. SEE SHEET 24.

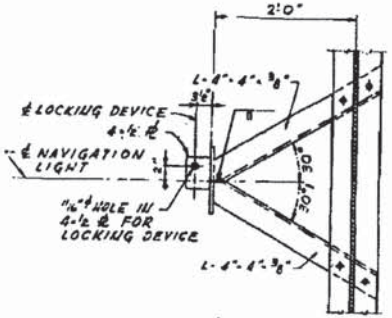
LOCKING DEVICE AND CHAINS WITH HOOKS SHALL BE FURNISHED WITH NAVIGATION LIGHTS.

FURNISHING AND INSTALLING OF ALL EQUIPMENT AND MATERIAL ON THIS SHEET, COMPLETE IN PLACE, IS INCLUDED IN THE ITEM "NAVIGATION LIGHTING SYSTEM, COMPLETE".

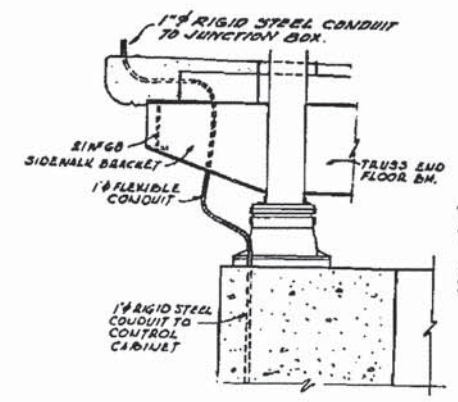
FOR OTHER REQUIREMENTS SEE SPECIAL PROVISIONS.



LOCKING DEVICE
SCALE: 3/4" = 1'-0"

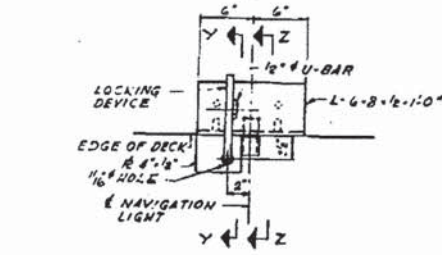


LOCKING DEVICE
SCALE: 1" = 1'-0"

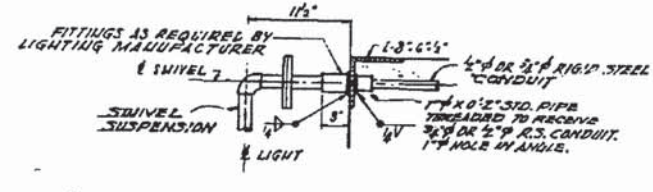


CONTROL CABINET
SCALE: 3/4" = 1'-0"

CONTROL CABINET
12" X 8" X 6"



LOCKING DEVICE
SCALE: 3/4" = 1'-0"



LOCKING DEVICE
SCALE: 3/4" = 1'-0"

ALFRED BENESCH & COMPANY
10 SOUTH WABASH AVE
CONSULTING ENGINEERS
CHICAGO, ILLINOIS

ILLINOIS DIVISION OF HIGHWAYS
CALUMET-SAG NAVIGATION PROJECT
CHATHAM STREET HIGHWAY BRIDGE
NAVIGATION LIGHT DETAILS
SCALE: AS NOTED
DATE: 22 JUNE 1958

FILE NO.
7-61-61

FOR INFORMATION ONLY

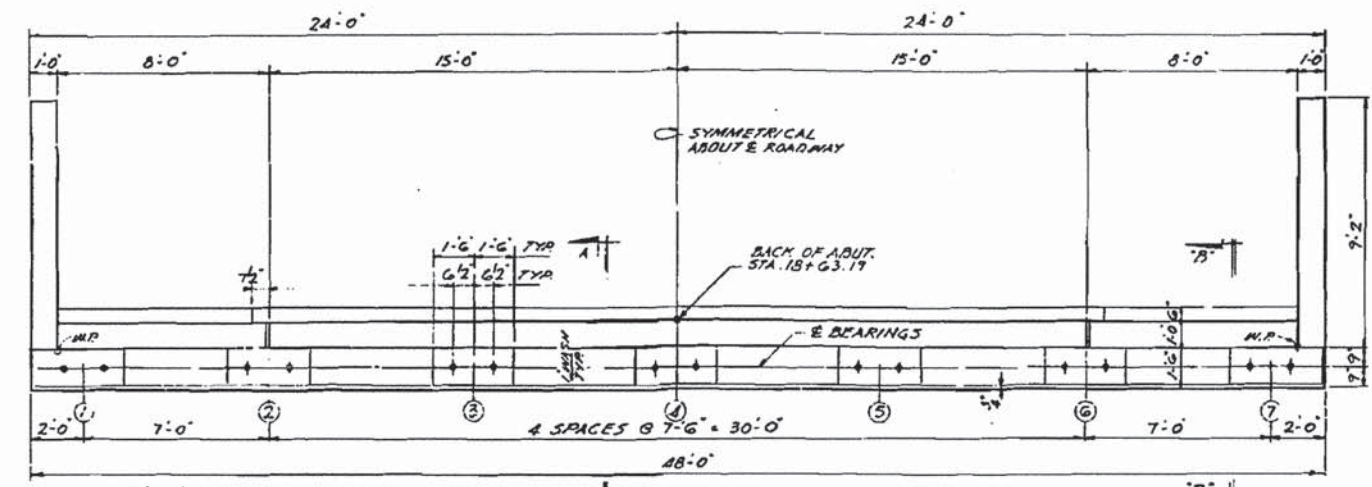
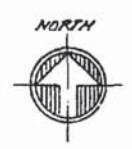
I:\CHIVPR\A\02020236341\Struct\vgm\016-5005-086-EP.dgn

LOCHNER H. W. LOCHNER, INC. 225 WEST WASHINGTON STREET 12 TH FLOOR CHICAGO, ILLINOIS 60606	USER NAME =	DESIGNED -	REVISED	STATE OF ILLINOIS DEPARTMENT OF TRANSPORTATION	EXISTING PLAN 33 - CHATHAM STREET BRIDGE STRUCTURE NO. 016-5005	MS	SECTION	COUNTY	TOTAL SHEETS	SHEET NO.
	FILE NAME = 016-5005-086-EP.dgn	CHECKED -	REVISED			1090	14-00164-00-BR	COOK	122	113
	PLOT SCALE =	DRAWN -	REVISED			CONTRACT NO. 61B58				
	PLOT DATE =	CHECKED -	REVISED			SHEET NO. S-86 OF 95 SHEETS				

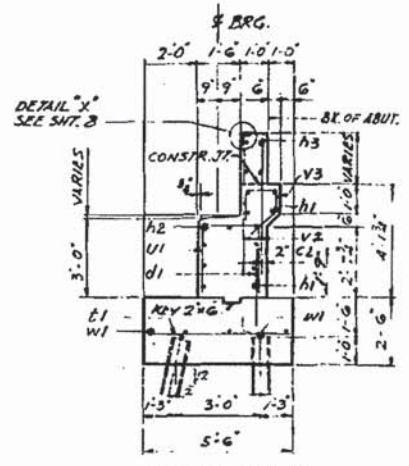
ILLINOIS FED. AID PROJECT

ROUTE NO.	SECTION	COUNTY	TOTAL SHEETS	SHEET NO.
C-259	14-00164-00-BR	COOK	50	30
STA.	TO STA.		PROJECT	
1+00.00	1+00.00		ILLINOIS	

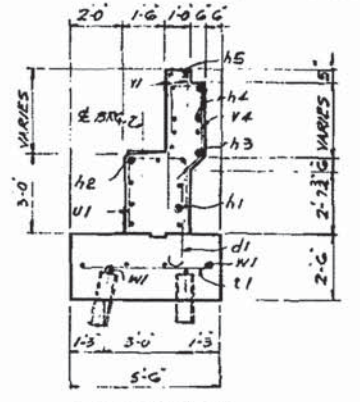
SHEET 20 OF 23



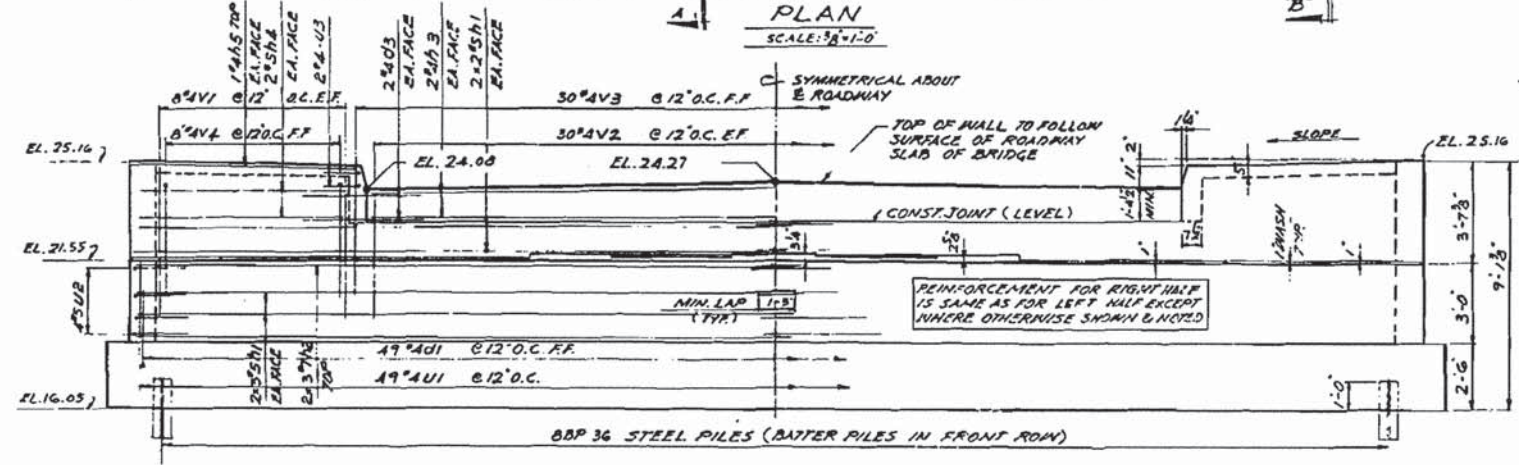
PLAN
SCALE: 3/8"=1'-0"



SECTION A-A
SCALE: 3/8"=1'-0"



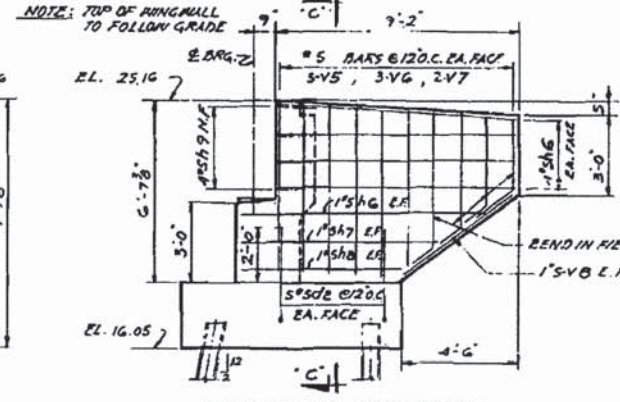
SECTION B-B
SCALE: 3/8"=1'-0"



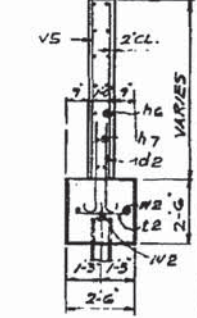
FRONT ELEVATION
SCALE: 3/8"=1'-0"

PILE DATA

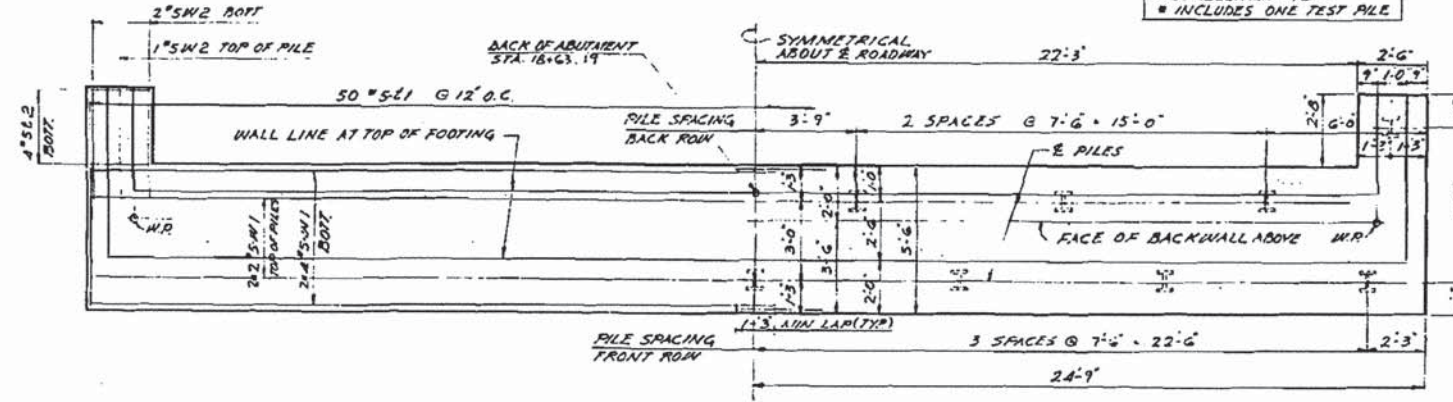
CAPACITY = 50 TONS
EST. LENGTH = 27 FEET
NO. REQUIRED = 15 #
INCLUDES ONE TEST PILE



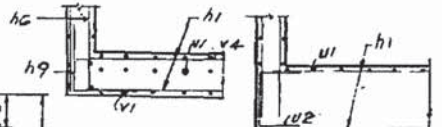
WINGWALL ELEVATION
SCALE: 3/8"=1'-0"



SECTION C-C
SCALE: 3/8"=1'-0"



FOOTING PLAN
SCALE: 3/8"=1'-0"



CORNER DETAILS

BILL OF MATERIAL

WINGWALLS INCLUDED

ITEM	UNIT	QUANTITY
CLASS X CONCRETE	CU. YD.	50.4
REINFORCEMENT BARS	LBS.	3700
STEEL PILES @ 27' EST. LG.	NO.	15
TEST PILE @ 27' EST. LG.	NO.	1

NOTES:

ELEVATIONS SHOWN ABOVE BRIDGE SEAT ARE GIVEN AT FACE OF BACKWALL. ADJUST SPACING OF REINFORCEMENT TO AVOID INTERFERENCE WITH DRILLING OF HOLES FOR ANCHOR BOLTS.

SEDESTAL BLOCKS TO BE POURED MONOLITHIC WITH BRIDGE SEAT.

BAR LENGTHS SHOWN PLUS 2" ETC. INDICATE LENGTHS OF BARS PER LINE WITH 2 LINES OF BARS.

FOR REINFORCEMENT BAR LIST SEE SHT. 27 FOR APPLICATION OF BRIDGE SEAT SALANT'S SPEC. AL PROVISIONS FOR STEEL PILE ENCASEMENT MAP C.E. 2-2-54, 2-2-54, 2-2-54.

FILE NO. 9-81-61

ALFRED BENESCH & COMPANY
10 SOUTH WABASH AVE CHICAGO, ILLINOIS

SCALE: AS NOTED DATE: 24 JUNE 1965

FOR INFORMATION ONLY

I:\CH\VP\1\0202023634\5\struct\1.dgn\016-5005-087-EP.dgn

LOCHNER
H. W. LOCHNER, INC.
225 WEST WASHINGTON STREET
12 TH FLOOR
CHICAGO, ILLINOIS 60606

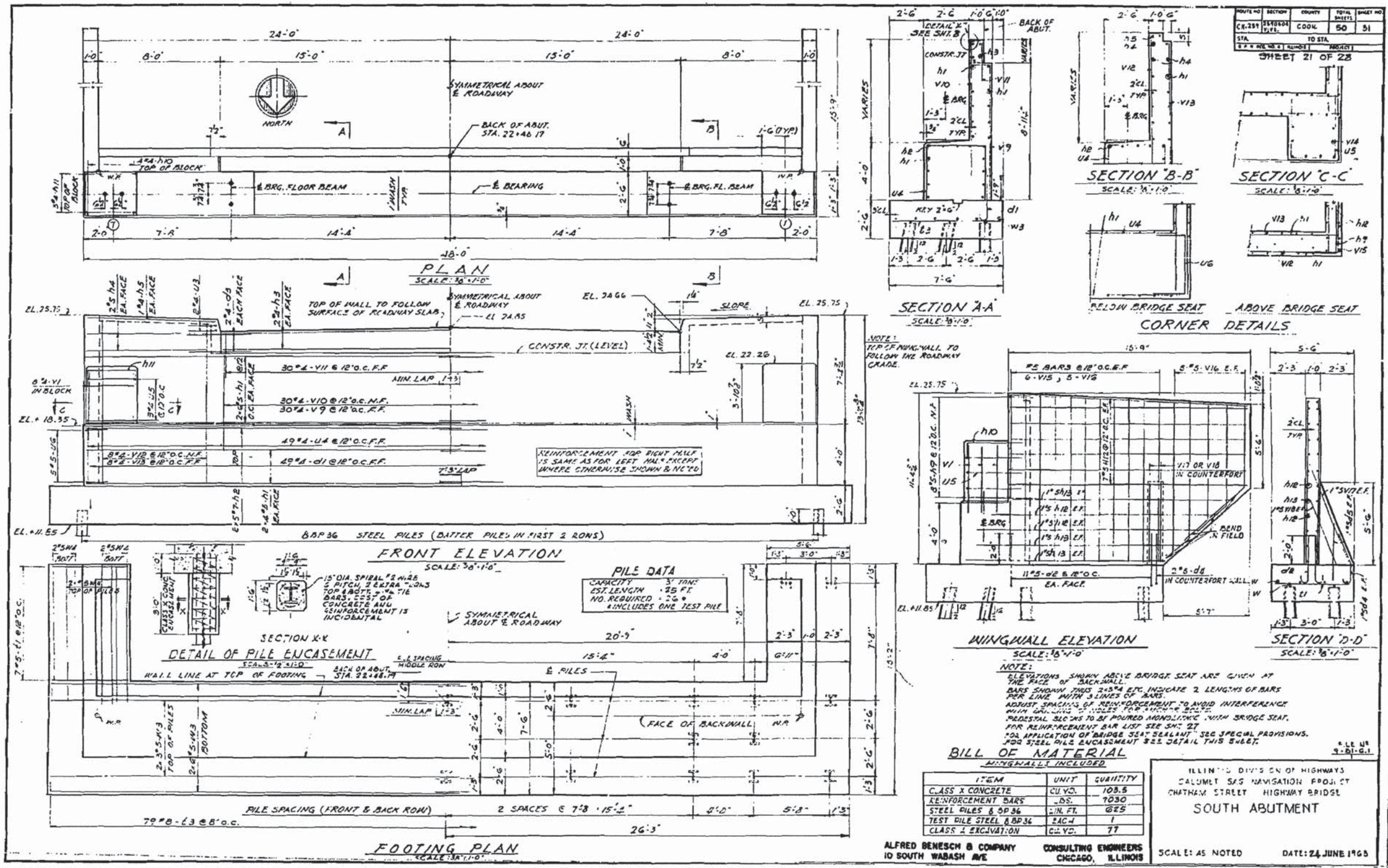
USER NAME =	DESIGNED -	REVISED
FILE NAME = 016-5005-087-EP.dgn	CHECKED -	REVISED
PLOT SCALE =	DRAWN -	REVISED
PLOT DATE =	CHECKED -	REVISED

STATE OF ILLINOIS
DEPARTMENT OF TRANSPORTATION

EXISTING PLAN 34 - CHATHAM STREET BRIDGE
STRUCTURE NO. 016-5005

SHEET NO. 5-87 OF 95 SHEETS

MS	SECTION	COUNTY	TOTAL SHEETS	SHEET NO.
1090	14-00164-00-BR	COOK	122	114
			CONTRACT NO. 61B58	
ILLINOIS FED. AID PROJECT				



PROJECT NO.	SECTION	COUNTY	TOTAL SHEETS	SHEET NO.
CR-251	BRIDGE	COOK	50	51
STA.	TO STA.		PROJECT	
2+0	2+4		SOUTH ABUTMENT	

BILL OF MATERIAL
WINGWALL INCLUDED

ITEM	UNIT	QUANTITY
CLASS X CONCRETE	CU. YD.	108.6
REINFORCEMENT BARS	LB.	7030
STEEL PILES 8 0P36	LIN. FT.	625
TEST PILE STEEL 8P36	EACH	1
CLASS 2 EXCAVATION	CU. YD.	77

ILLINOIS DIVISION OF HIGHWAYS
CALUMET SAS NAVIGATION PROJECT
CHATHAM STREET HIGHWAY BRIDGE
SOUTH ABUTMENT

ALFRED BENECH & COMPANY CONSULTING ENGINEERS
10 SOUTH WABASH AVE CHICAGO, ILLINOIS
SCALE: AS NOTED DATE: 24 JUNE 1965

FOR INFORMATION ONLY

LOCHNER
H. W. LOCHNER, INC.
225 WEST WASHINGTON STREET
12 TH FLOOR
CHICAGO, ILLINOIS 60606

USER NAME =	DESIGNED -	REVISED
FILE NAME = 016-5005-088-EP.dgn	CHECKED -	REVISED
PLOT SCALE =	DRAWN -	REVISED
PLOT DATE =	CHECKED -	REVISED

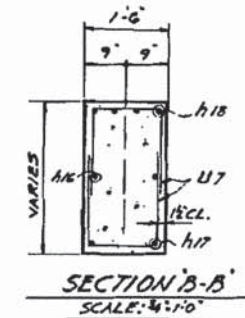
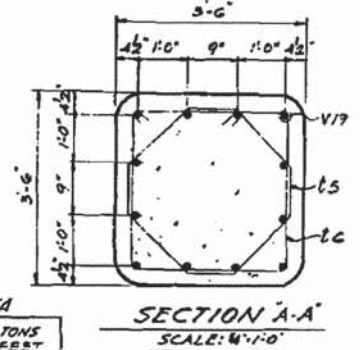
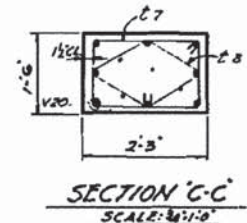
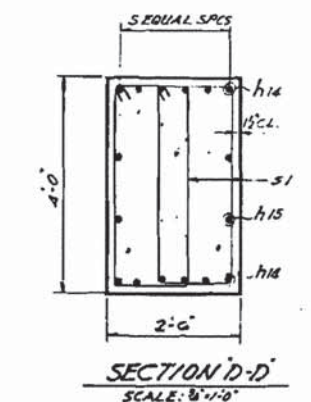
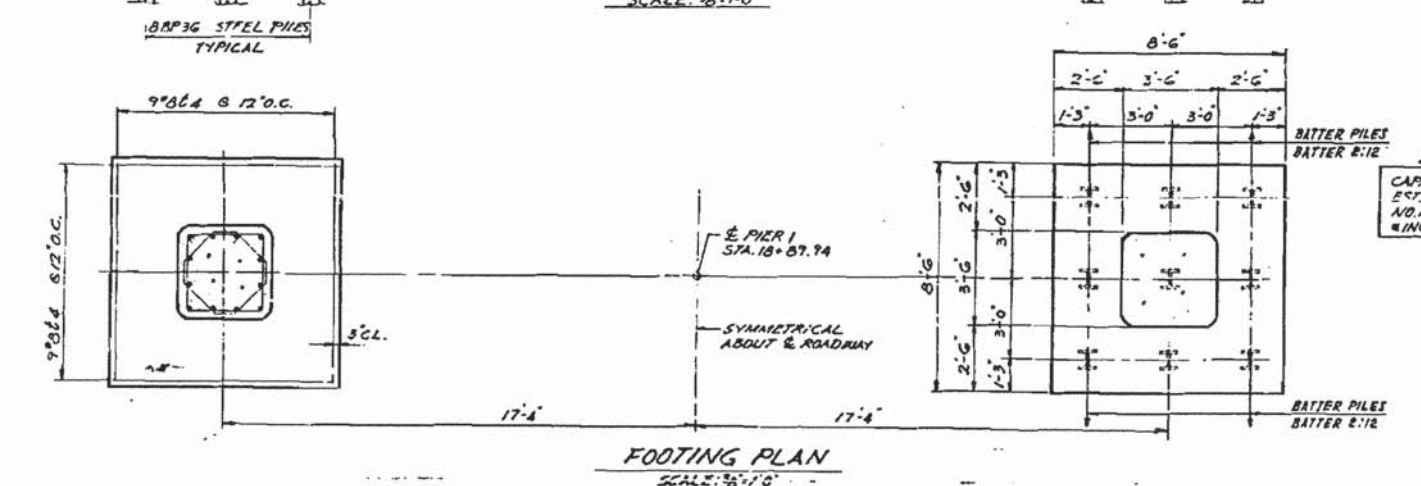
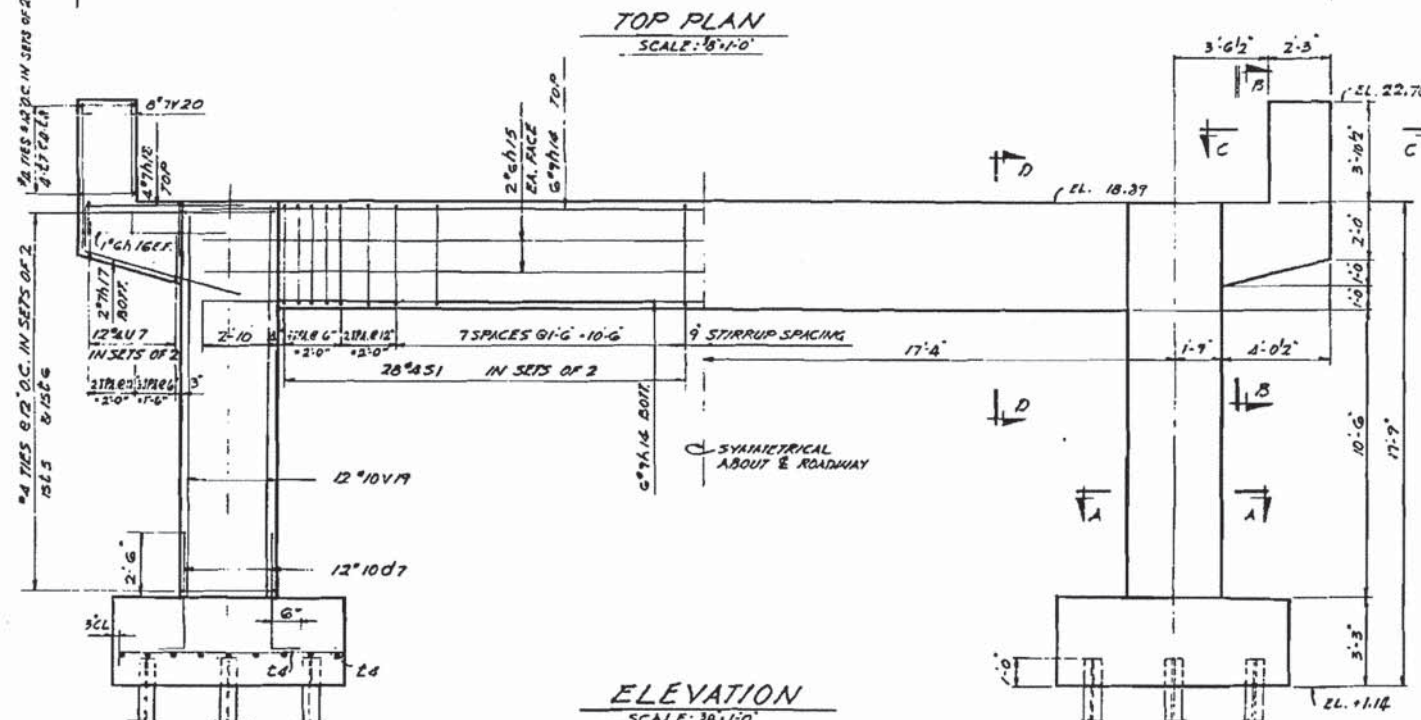
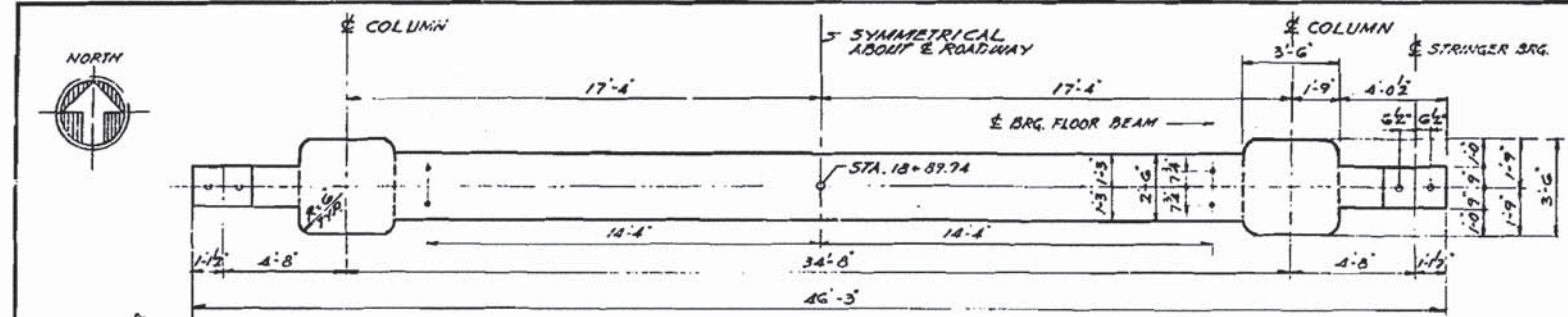
STATE OF ILLINOIS
DEPARTMENT OF TRANSPORTATION

EXISTING PLAN 35 - CHATHAM STREET BRIDGE
STRUCTURE NO. 016-5005
SHEET NO.S-88 OF 95 SHEETS

MS	SECTION	COUNTY	TOTAL SHEETS	SHEET NO.
1090	14-00164-00-BR	COOK	122	115
			CONTRACT NO. 61B58	
ILLINOIS FED. AID PROJECT				

ROUTE NO.	SECTION	COUNTY	TOTAL SHEETS	SHEET NO.
CH. 154	BRIDGE	COOK	50	32
STA.	TO STA.		PROJECT	
14+00	14+00		PIER 1	

SHEET 22 OF 28



PILE DATA
 CAPACITY = 50 TONS
 EST. LENGTH = 12 FEET
 NO. REQUIRED = 13
 INCLUDES ONE TEST PILE

BILL OF MATERIAL

ITEM	UNIT	QUANTITY
CLASS X CONCRETE	CU. YD.	43.7
REINFORCEMENT BARS	LBS.	5870
CLASS A EXCAVATION	CU. YD.	69
STEEL PILES BPP36	LINE FT	206
TEST PILE STEEL BPP36	EACH	1

ILLINOIS DIVISION OF HIGHWAYS
 CALUMET SAG NAVIGATION PROJECT
 CHATHAM STREET HIGHWAY BRIDGE
PIER 1
 SCALE: AS NOTED DATE: 24 JUNE 1965

ALFRED BENECH & COMPANY CONSULTING ENGINEERS
 10 SOUTH WABASH AVE CHICAGO, ILLINOIS

FOR INFORMATION ONLY

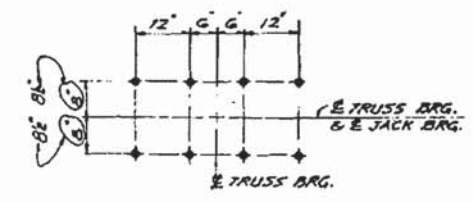
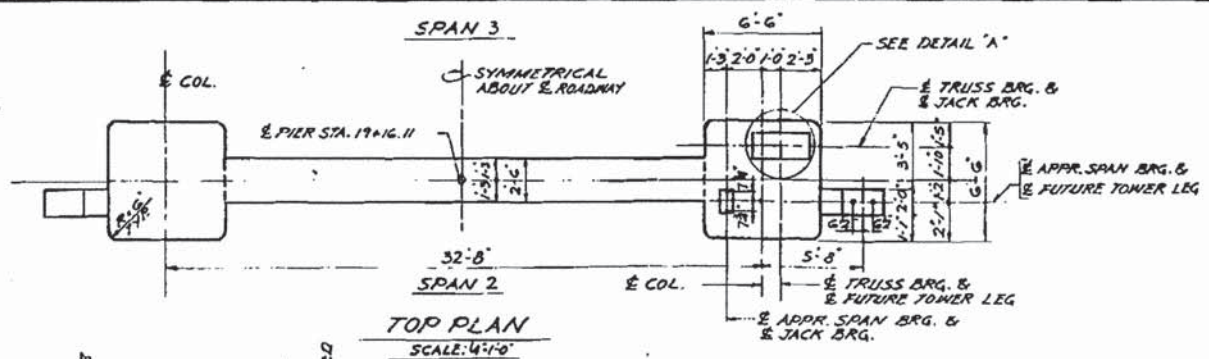
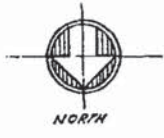
I:\CHIVPRJ\0000023534\Struct\A\016-5005-889-EP.dgn

LOCHNER H. W. LOCHNER, INC. 225 WEST WASHINGTON STREET 12 TH FLOOR CHICAGO, ILLINOIS 60606	USER NAME =	DESIGNED -	REVISED
	FILE NAME = 016-5005-889-EP.dgn	CHECKED -	REVISED
	PLOT SCALE =	DRAWN -	REVISED
	PLOT DATE =	CHECKED -	REVISED

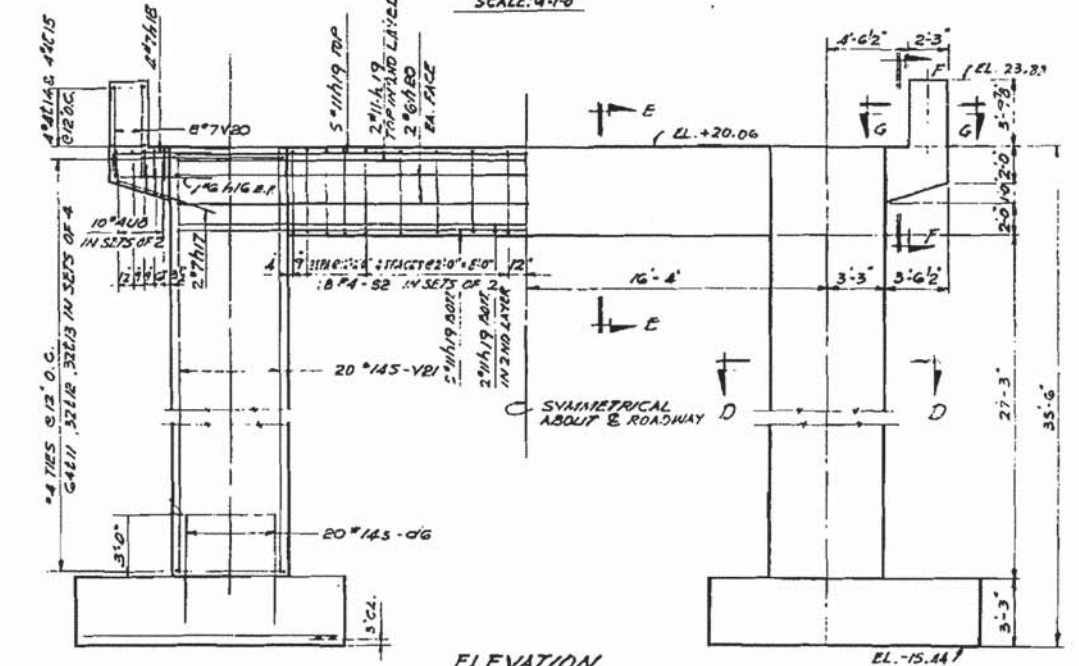
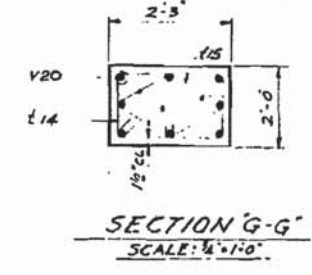
STATE OF ILLINOIS
 DEPARTMENT OF TRANSPORTATION

EXISTING PLAN 36 - CHATHAM STREET BRIDGE
 STRUCTURE NO. 016-5005
 SHEET NO. S-89 OF 95 SHEETS

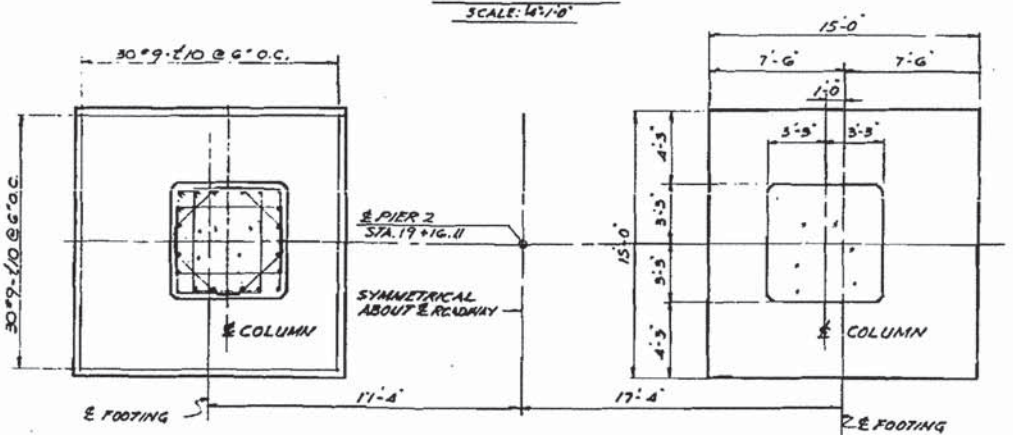
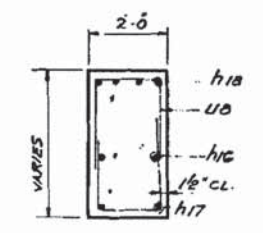
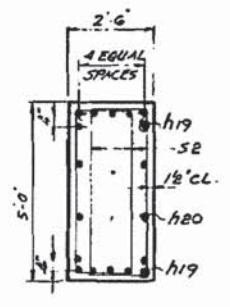
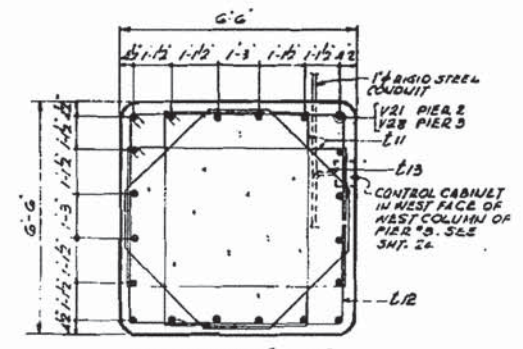
MS	SECTION	COUNTY	TOTAL SHEETS	SHEET NO.
1090	14-00164-00-BR	COOK	122	116
			CONTRACT NO. 61B58	
ILLINOIS FED. AID PROJECT				



PROJECT NO.	SECTION	COUNTY	TOTAL SHEETS	SHEET NO.
CIL 254	PENNSB	COOK	50	33
STA.	TO STA.		PROJECT	
19+16.11	19+16.11		CHATHAM ST. BRIDGE	



DETAIL 'A'
SPACING OF 1/2" DRILLED HOLES FOR ANCHOR BOLTS. ADJUST SPACING OF REINFORCEMENT BARS TO AVOID INTERFERENCE WITH DRILLING OF HOLES FOR ANCHOR BOLTS.



BILL OF MATERIAL

ITEM	UNIT	QUANTITY
CLASS X CONCRETE	CU. YD.	169.3
REINFORCEMENT BARS	LBS.	28,120
CLASS A EXCAVATION	CU. YD.	209
CLASS B EXCAVATION	CU. YD.	386

NOTE! FOR APPLICATION OF BRIDGE SEAT SEALANT - SEE SPECIAL PROVISION.

AS BUILT

ILLINOIS DIVISION OF HIGHWAYS
CALUMET - SAG NAVIGATION PROJECT
CHATHAM STREET HIGHWAY BRIDGE
PIER 2

ALFRED BENESCH & COMPANY CONSULTING ENGINEERS
10 SOUTH WABASH AVE CHICAGO, ILLINOIS

SCALE: AS NOTED DATE: 24 JUNE 1968

REV 1-27-64 DETAIL A 8"1082" R.P.E.

FOR INFORMATION ONLY

I:\CH\VP\1\0020023624\5\sect\p\p\016-5005-EP.dgn

LOCHNER
H. W. LOCHNER, INC.
225 WEST WASHINGTON STREET
12 TH FLOOR
CHICAGO, ILLINOIS 60606

USER NAME =	DESIGNED -	REVISED
FILE NAME = 016-5005-EP.dgn	CHECKED -	REVISED
PLOT SCALE =	DRAWN -	REVISED
PLOT DATE =	CHECKED -	REVISED

STATE OF ILLINOIS
DEPARTMENT OF TRANSPORTATION

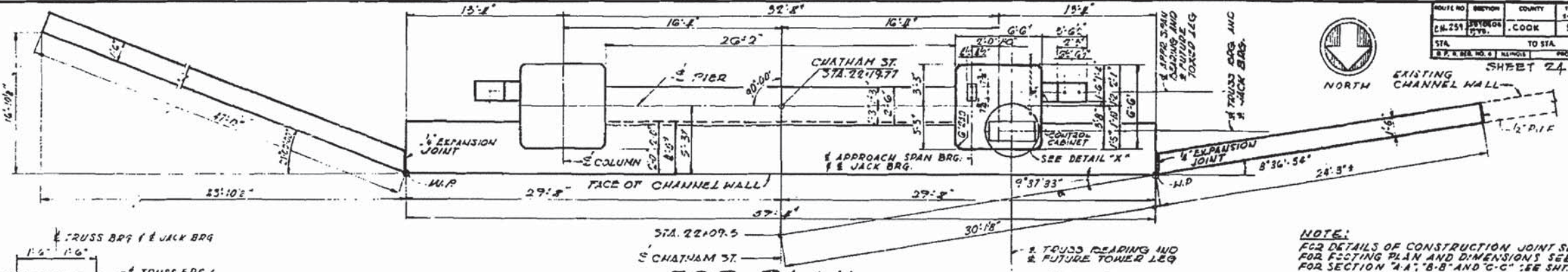
EXISTING PLAN 37 - CHATHAM STREET BRIDGE
STRUCTURE NO. 016-5005

SHEET NO. 5-90 OF 95 SHEETS

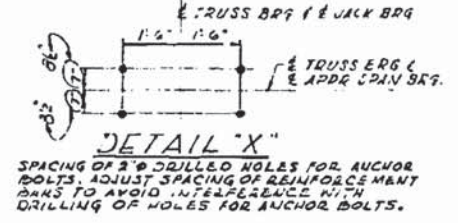
MS	SECTION	COUNTY	TOTAL SHEETS	SHEET NO.
1090	14-00164-00-BR	COOK	122	117
			CONTRACT NO. 61B58	
ILLINOIS FED. AID PROJECT				

ROUTE NO.	SECTION	COUNTY	TOTAL SHEETS
CH. 251	14-00164-00-BR	COOK	122
STA.	TO STA.	PROJECT	
872.00	872.00	CHATHAM ST. BRIDGE	

SHEET 24 OF 28



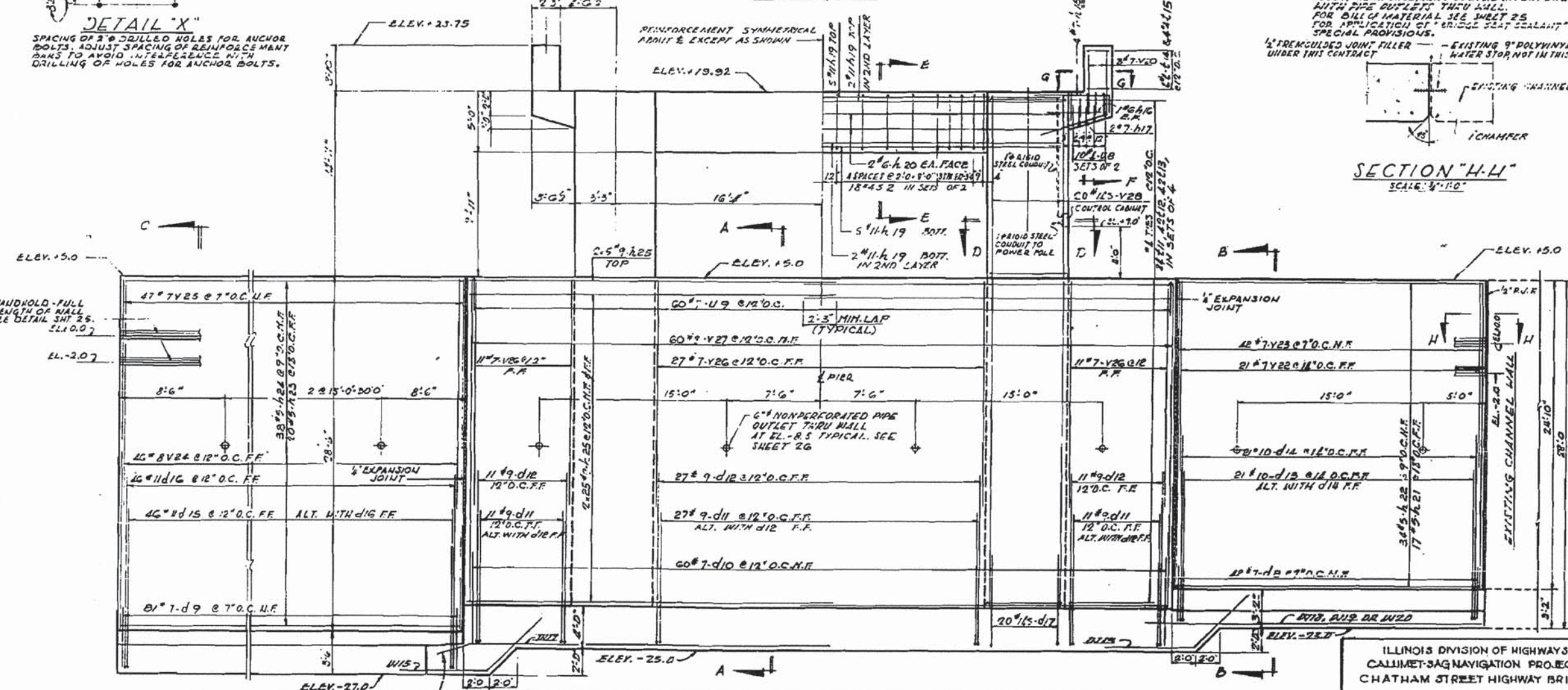
TOP PLAN
SCALE: 1/4" = 1'-0"



SPACING OF 2" DRILLED HOLES FOR ANCHOR BOLTS. ADJUST SPACING OF REINFORCEMENT BARS TO AVOID INTERFERENCE WITH DRILLING OF HOLES FOR ANCHOR BOLTS.

NOTE:
FOR DETAILS OF CONSTRUCTION JOINT SEE SHEETS FOR FOOTING PLAN AND DIMENSIONS SEE SHEETS FOR SECTION "A-A", "B-B" AND "C-C" SEE SHEET 25 FOR OTHER SECTIONS SEE SHEET 25 FOR REINFORCEMENT BAR LIST SEE SHEET 27 ADJUST REINFORCEMENT TO AVOID INTERFERENCE WITH PIPE OUTLET THROUGH WALL FOR BILL OF MATERIAL SEE SHEET 25 FOR APPLICATION OF "BRIDGE SEAT SEALANT" SEE SPECIAL PROVISIONS.

SECTION "H-H"
SCALE: 1/4" = 1'-0"



ELEVATION PIER 3 AND SOUTH CHANNEL WALL
SCALE: 1/4" = 1'-0"

AS BUILT

ILLINOIS DIVISION OF HIGHWAYS
CALUMET-SAG NAVIGATION PROJECT
CHATHAM STREET HIGHWAY BRIDGE
PIER 3 AND SOUTH CHANNEL WALL

ALFRED BEWESCH & COMPANY CONSULTING ENGINEERS
10 SOUTH WABASH AVE CHICAGO, ILLINOIS
SCALE: AS NOTED DATE: 24 JUNE 1968

FOR INFORMATION ONLY

LOCHNER
H. W. LOCHNER, INC.
225 WEST WASHINGTON STREET
12 TH FLOOR
CHICAGO, ILLINOIS 60606

USER NAME :	DESIGNED -	REVISED
FILE NAME : 016-5005-091-EP.dgn	CHECKED -	REVISED
PLOT SCALE :	DRAWN -	REVISED
PLOT DATE :	CHECKED -	REVISED

STATE OF ILLINOIS
DEPARTMENT OF TRANSPORTATION

EXISTING PLAN 38 - CHATHAM STREET BRIDGE
STRUCTURE NO. 016-5005

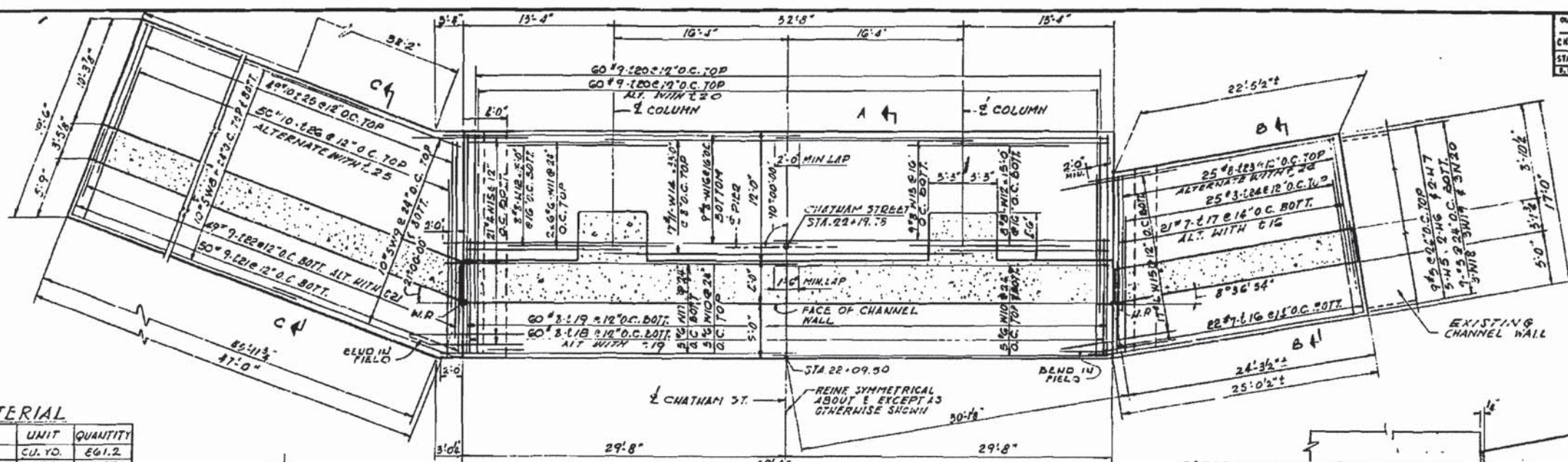
SHEET NO. S-91 OF 95 SHEETS

MS	SECTION	COUNTY	TOTAL SHEETS	SHEET NO.
1090	14-00164-00-BR	COOK	122	118
			CONTRACT NO. 61B58	
ILLINOIS FED. AID PROJECT				

I:\CHN\PRJ\000003634\Structure\016-5005-091-EP.dgn

Rev 127-64 DETAIL 'X' 7' 10 3/4" RPE.

DATE NO.	SECTION	COUNTY	TOTAL SHEETS	SHEET NO.
04.25.63	15000	COOK	90	95
STA.	TO STA.		PROJECT	
12+00	12+00		CHATHAM ST. BRIDGE	
SHEET 25 OF 28				



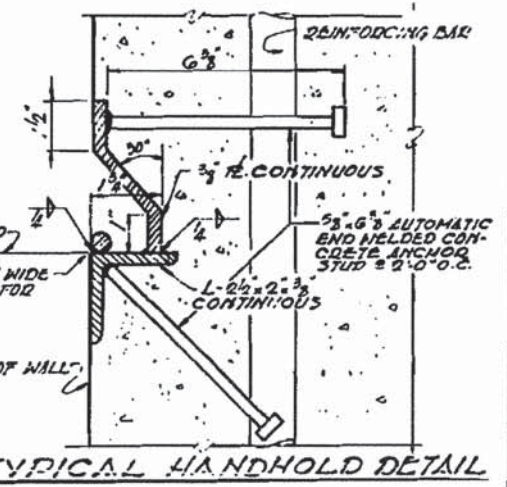
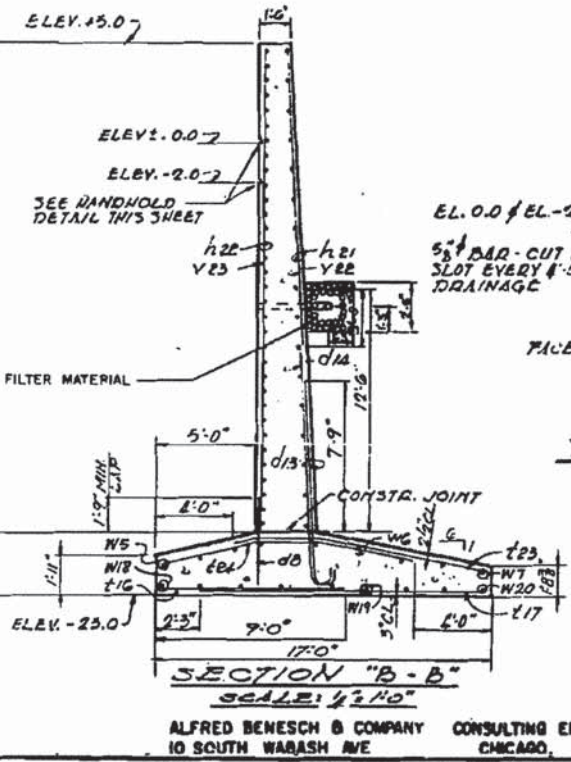
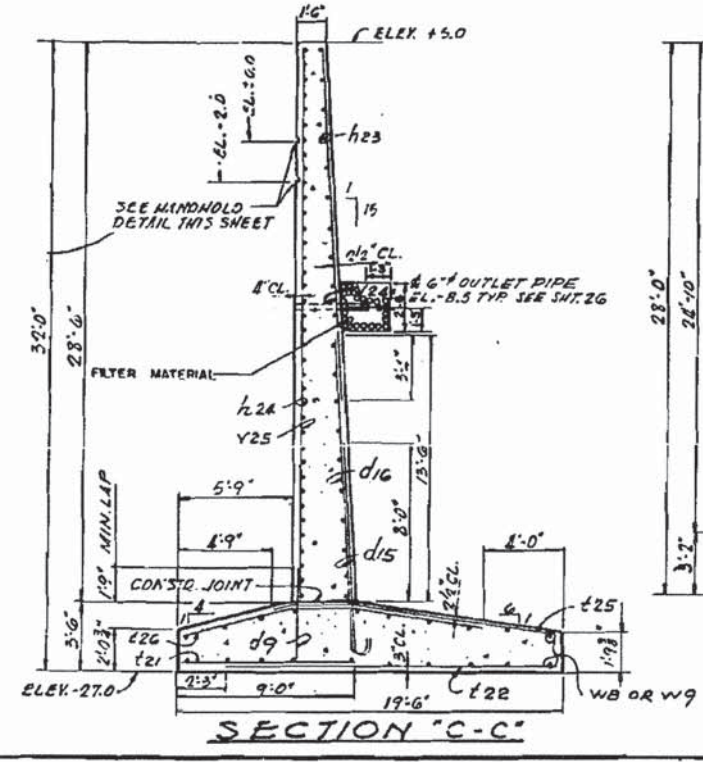
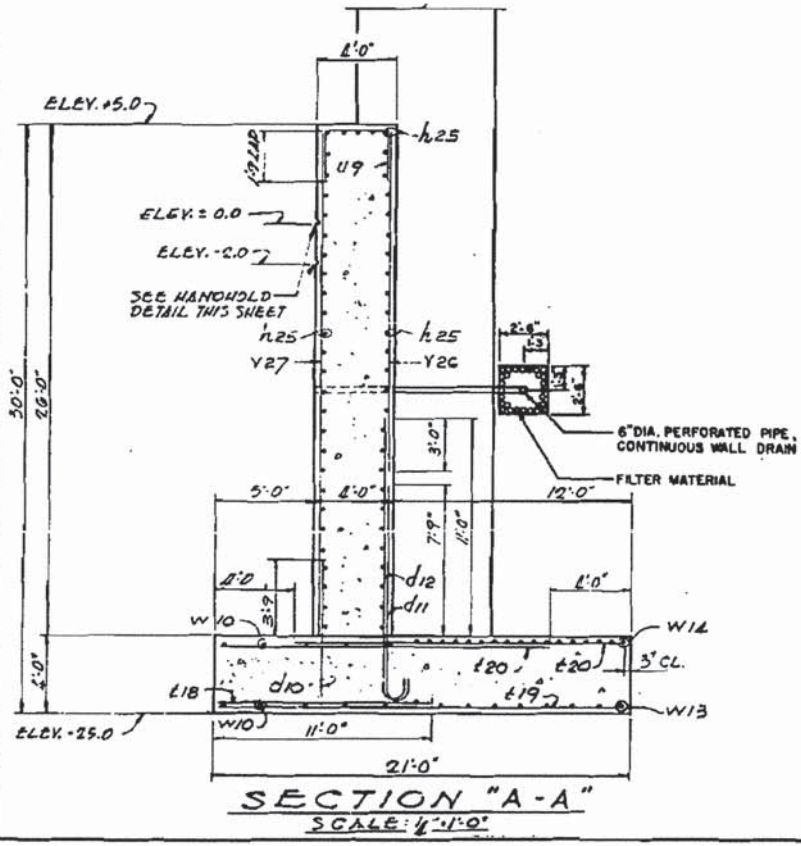
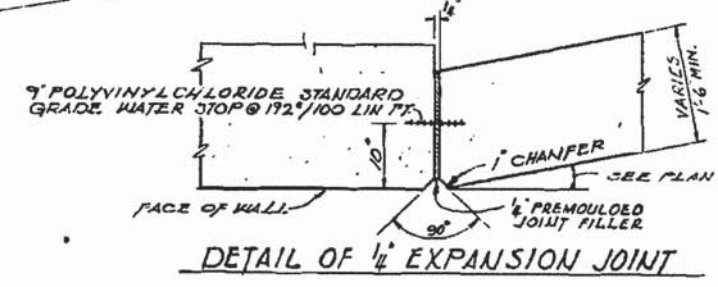
BILL OF MATERIAL

ITEM	UNIT	QUANTITY
CLASS X CONCRETE	CU. YD.	261.2
REINFORCEMENT BARS	LBS.	104,070
CLASS A EXCAVATION	CU. YD.	1,575
CLASS B EXCAVATION	CU. YD.	2,573
ROCK EXCAVATION	CU. YD.	205
# STRUCTURAL STEEL	LBS.	3400
POROUS GRANULAR EMBANKMENT	CU. YD.	7,368
EARTH EXCAVATION	CU. YD.	13,285

* HANDHOLD DETAIL IN FACE OF CHANNEL WALL



FOOTING PLAN PIER #3 AND SOUTH CHANNEL WALL
SCALE: 3/16" = 1'-0"



REVISED 19 SEPT. 1963
REVISED 12 AUG 1963

ILLINOIS DIVISION OF HIGHWAYS
CALUMET-SAG NAVIGATION PROJECT
CHATHAM STREET HIGHWAY BRIDGE
PIER 3 AND SOUTH CHANNEL WALL

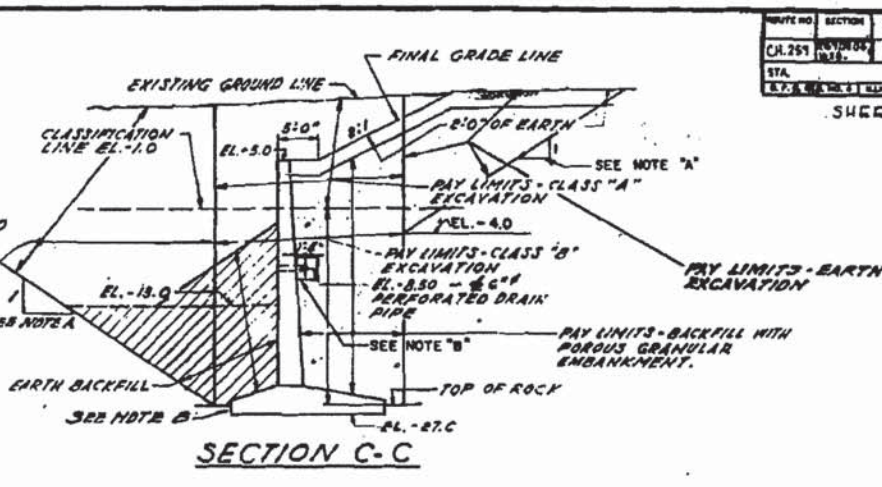
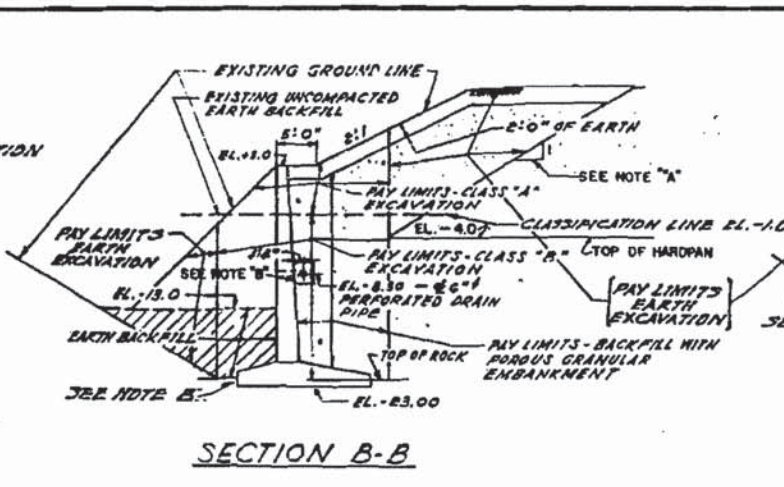
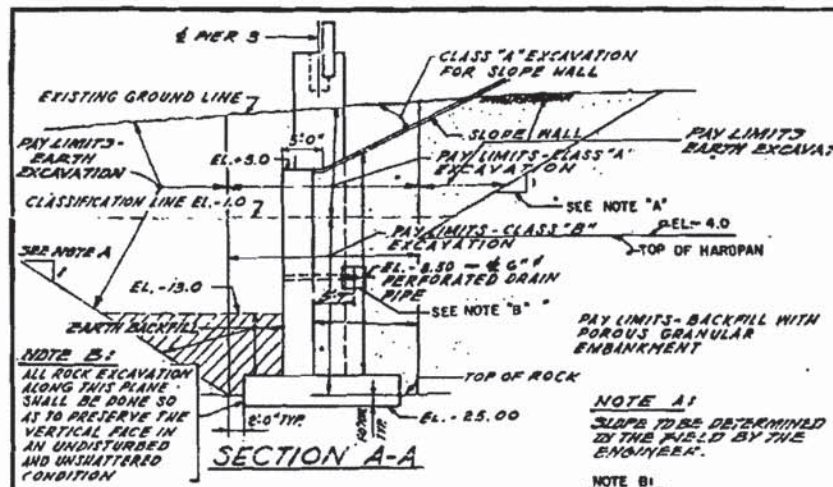
SCALE: AS NOTED DATE: 24 JUNE 1963

ALFRED BENESCH & COMPANY CONSULTING ENGINEERS
10 SOUTH WABASH AVE CHICAGO, ILLINOIS

FOR INFORMATION ONLY

I:\CHIVPR\1\0020036341\Struct\Wgn\016-5085-092-EP.dgn

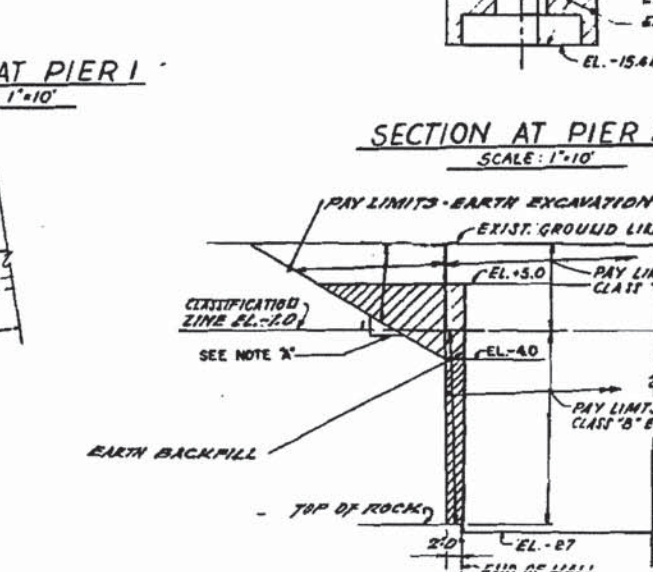
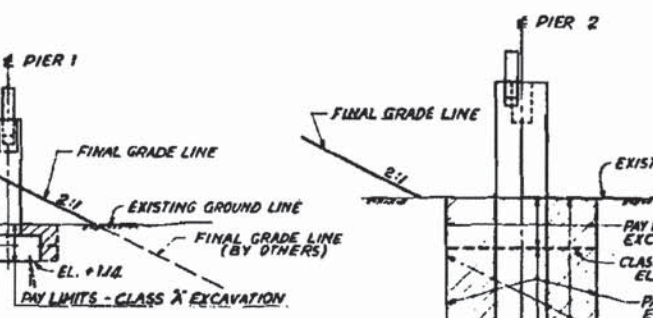
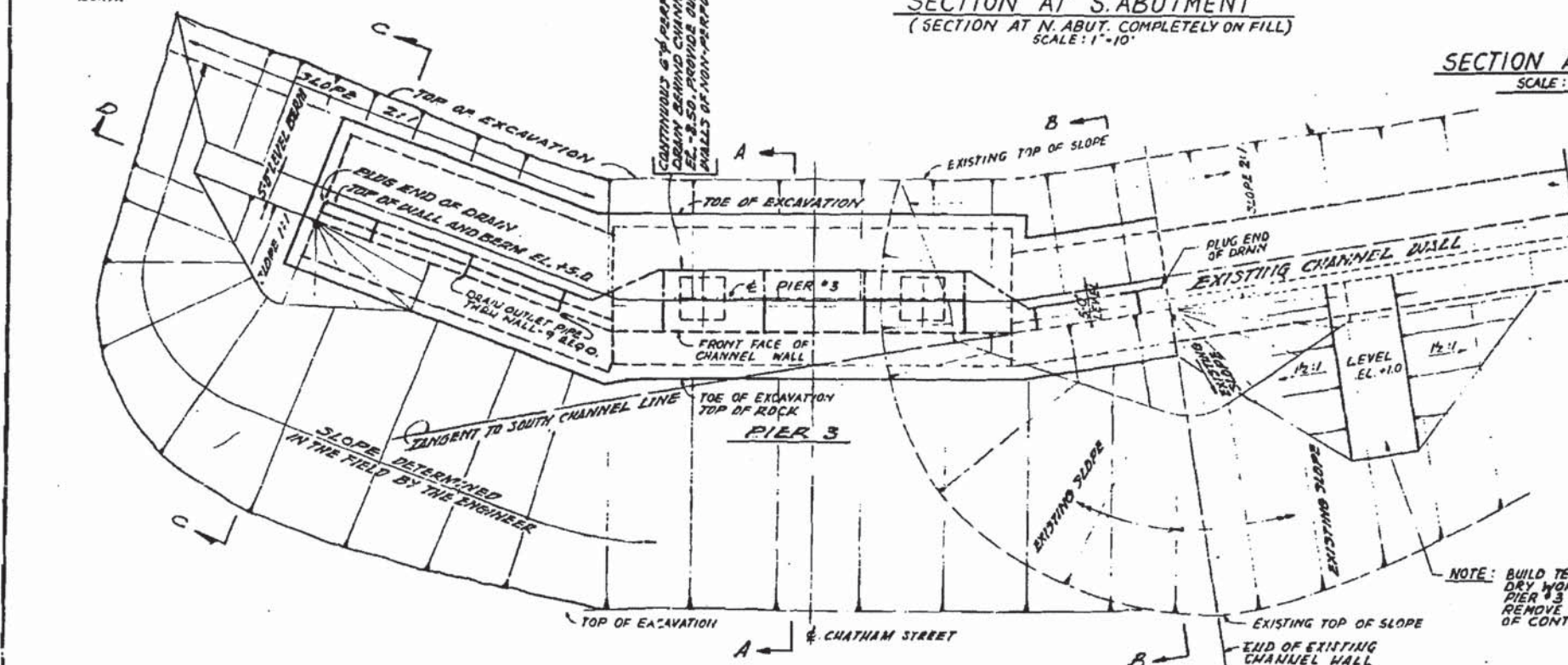
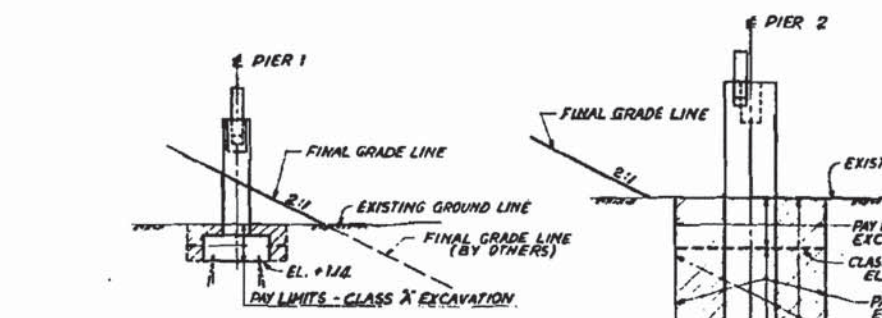
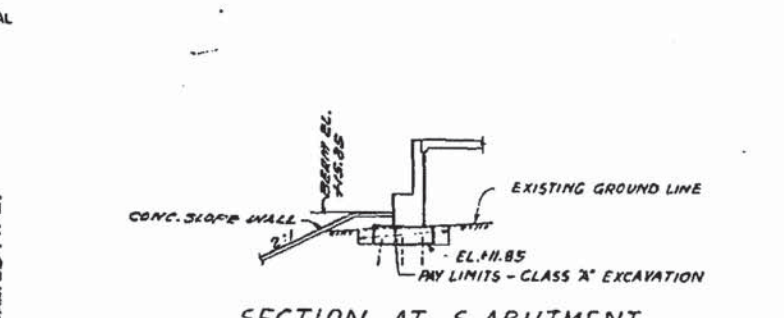
LOCHNER H. W. LOCHNER, INC. 225 WEST WASHINGTON STREET 12 TH FLOOR CHICAGO, ILLINOIS 60606	USER NAME = FILE NAME = 016-5085-092-EP.dgn PLOT SCALE = PLOT DATE =	DESIGNED - CHECKED - DRAWN - CHECKED - REVISED	DESIGNED - CHECKED - DRAWN - CHECKED - REVISED	STATE OF ILLINOIS DEPARTMENT OF TRANSPORTATION	EXISTING PLAN 39 - CHATHAM STREET BRIDGE STRUCTURE NO. 016-5005 SHEET NO. 5-92 OF 95 SHEETS	MS 1090	SECTION 14-00164-00-BR	COUNTY COOK	TOTAL SHEETS 122	SHEET NO. 119
					CONTRACT NO. 61B58		ILLINOIS FED. AID PROJECT			



NOTE B1:
ALL ROCK EXCAVATION ALONG THIS PLANE SHALL BE DONE SO AS TO PRESERVE THE VERTICAL FACE IN AN UNDISTURBED AND UNSHATTERED CONDITION.

NOTE A1:
SLOPE TO BE DETERMINED IN THE FIELD BY THE ENGINEER.

NOTE B1:
FOR DETAILS OF FILTER MATERIAL AT PERFORATED PIPE DRAIN, SEE SHEET 25 OF 28.



PLAN AT PIER 3 AND CHANNEL WALLS
(SHOWING FINISHED CONDITIONS AND EXCAVATION LIMITS).
SCALE: 1" = 10'

SECTION D
SCALE: 1" = 10'
REVISED 18 SEPT. 1963
REVISED 12 AUG 1968

NOTE: BUILD TEMPORARY EARTH DAM TO PROVIDE DRY WORKING CONDITIONS WHEN CONSTRUCTING PIER #3 AND ADJACENT CHANNEL WALLS. REMOVE EARTH DAM PRIOR TO COMPLETION OF CONTRACT. SEE SPECIAL PROVISIONS.

ILLINOIS DIVISION OF HIGHWAYS
CALUMET-SAG NAVIGATION PROJECT
CHATHAM STREET HIGHWAY BRIDGE
EXCAVATION DETAILS

SCALE: AS NOTED DATE: 24 JUNE 1968

FOR INFORMATION ONLY

I:\CH\VP\1\02020236\1\Struct\1968\016-5005-013-EP.dgn

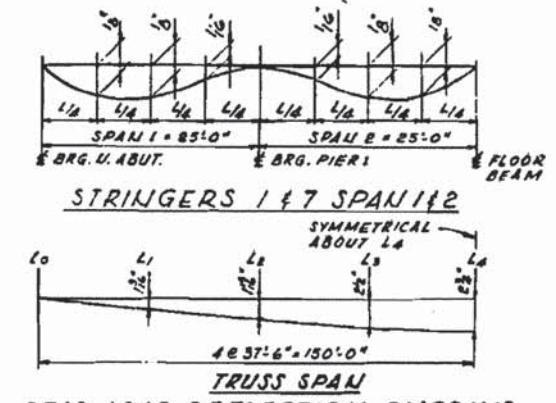
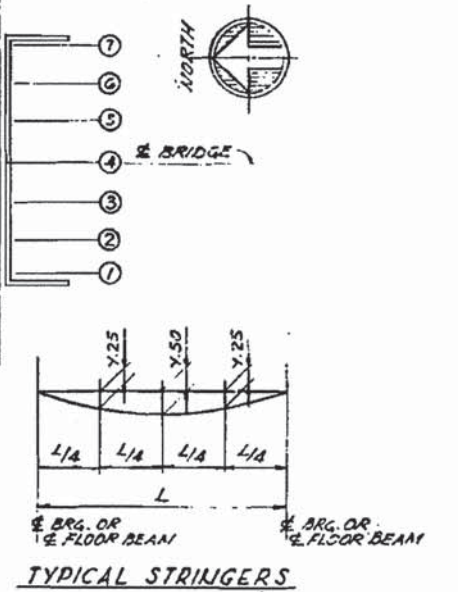
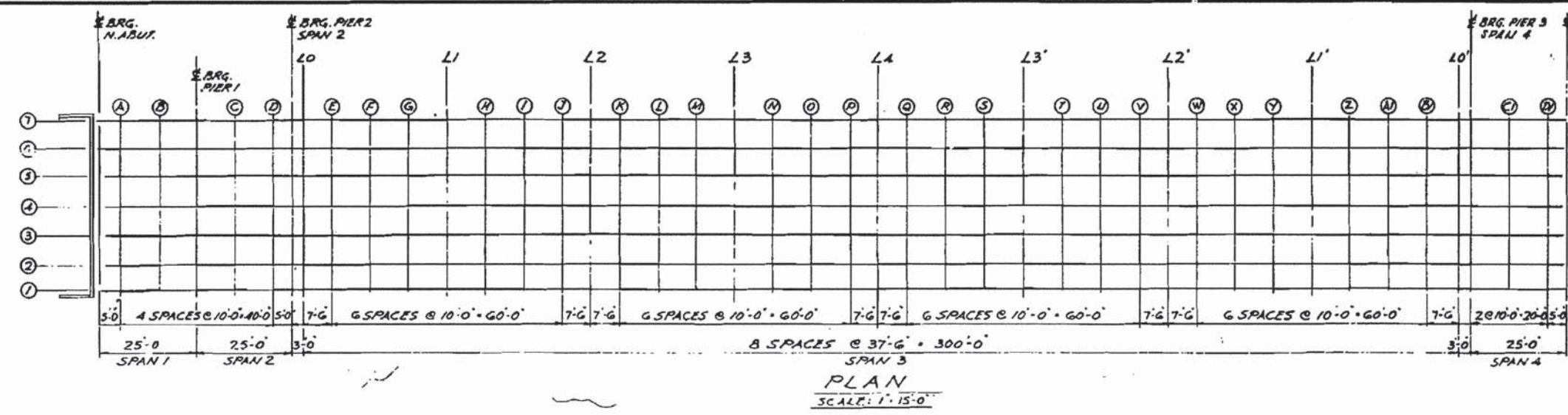
LOCHNER
H. W. LOCHNER, INC.
225 WEST WASHINGTON STREET
12 TH FLOOR
CHICAGO, ILLINOIS 60606

USER NAME =	DESIGNED -	REVISED
FILE NAME = 016-5005-013-EP.dgn	CHECKED -	REVISED
PLOT SCALE =	DRAWN -	REVISED
PLOT DATE =	CHECKED -	REVISED

STATE OF ILLINOIS
DEPARTMENT OF TRANSPORTATION

EXISTING PLAN 40 - CHATHAM STREET BRIDGE
STRUCTURE NO. 016-5005
SHEET NO. S-93 OF 95 SHEETS

MS	SECTION	COUNTY	TOTAL SHEETS	SHEET NO.
1090	14-00164-00-BR	COOK	122	120
			CONTRACT NO. 61B58	
ILLINOIS FED. AID PROJECT				



TRUSS SPAN
 DEAD LOAD DEFLECTION DIAGRAMS
 HEIGHT OF STRUCTURAL STEEL NOT INCLUDED
 TABLE OF DEAD LOAD DEFLECTIONS

SPAN	L	STRINGER	Y. 25	Y. 50	Y. 75
1 & 2	25'-0"	1 & 7	SEE DIAGRAM		
3	88'-37'-6"	1 & 7	18"	3/16"	18"
4	25'-0"	1 & 7	18"	3/16"	18"

LINE	SPAN	STATION	OFFSET	THEORETICAL GRADE ELEVATION	ELEVATION ABOVE F.M. DEAR LOAD DEFLECTION	LINE	SPAN	STATION	OFFSET	THEORETICAL GRADE ELEVATION	ELEVATION ABOVE F.M. DEAR LOAD DEFLECTION	LINE	SPAN	STATION	OFFSET	THEORETICAL GRADE ELEVATION	ELEVATION ABOVE F.M. DEAR LOAD DEFLECTION	LINE	SPAN	STATION	OFFSET	THEORETICAL GRADE ELEVATION	ELEVATION ABOVE F.M. DEAR LOAD DEFLECTION
1,7		1884,940	22,000	23,917	25,175	1,7		1955,440	22,000	24,010	29,323	1,7		2050,440	22,000	30,274	31,776	1,7		2100,440	22,000	26,747	30,180
2,6		1884,940	15,000	24,112	24,112	2,6		1955,440	15,000	26,156	28,258	2,6		2050,440	15,000	30,420	30,687	2,6		2100,440	15,000	28,492	29,053
3,5		1884,940	7,500	24,251	24,251	3,5		1955,440	7,500	28,294	29,404	3,5		2050,440	7,500	30,559	30,615	3,5		2100,440	7,500	29,001	29,202
4		1884,940	.000	24,300	24,300	4		1955,440	.000	28,343	29,453	4		2050,440	.000	30,507	30,864	4		2100,440	.000	29,080	29,231

NOTE: THE ABOVE DEFLECTIONS ARE NOT FOR USE IN THE FIELD IF THE ENGINEER IS WORKING FROM THE THEORETICAL GRADE ELEVATIONS ADJUSTED FOR DEAD LOAD DEFLECTION

ILLINOIS DIVISION OF HIGHWAYS
 CALUMET-JAG NAVIGATION PROJECT
 CHATHAM STREET HIGHWAY BRIDGE
 TOP OF SLAB ELEVATIONS

ALFRED BENESCH & COMPANY CONSULTING ENGINEERS CHICAGO, ILLINOIS
 SCALE: AS NOTED DATE: 24 JUNE 1965

FOR INFORMATION ONLY

I:\CHIV\PLN\002002036241\Struct\Wgn\016-5005-895-EP.dgn