

STATE OF ILLINOIS  
DEPARTMENT OF TRANSPORTATION

F.A.P. RTE.	SECTION	COUNTY	TOTAL SHEETS	SHEET NO.
646	(121,122)RS-5,SW	BUREAU	25	1
ILLINOIS			CONTRACT NO. 66K28	

**INDEX**

- 1 COVER SHEET
- 2 GENERAL NOTES
- 3-6 SUMMARY OF QUANTITIES
- 7 TYPICAL SECTIONS
- 8-10 SCHEDULES
- 11 PROJECT LAYOUT
- 12 CULVERT LINER INSERTION DETAIL
- 13-21 ADA RAMPS
- 22-25 DETAILS

**LIST OF ILLINOIS DOT HIGHWAY STANDARDS**

- 000001-07 STANDARD SYMBOLS, ABBREVIATIONS AND PATTERNS
- 001006 DECIMAL OF AN INCH AND OF A FOOT
- 202001-01 EARTH MEDIAN DITCH CHECK
- 406201-01 MAILBOX TURNOUT
- 424001-11 PERPENDICULAR CURB RAMPS FOR SIDEWALKS
- 424006-04 DIAGONAL CURB RAMPS FOR SIDEWALKS
- 424011-04 CORNER PARALLEL CURB RAMPS FOR SIDEWALKS
- 424016-05 MID-BLOCK CURB RAMPS FOR SIDEWALKS
- 424021-05 DEPRESSED CORNER FOR SIDEWALKS
- 424026-03 ENTRANCE / ALLEY PEDESTRIAN CROSSINGS
- 424031-02 MEDIAN PEDESTRIAN CROSSINGS
- 630001-12 STEEL PLATE BEAM GUARDRAIL
- 630106-02 LONG-SPAN GUARDRAIL OVER CULVERT
- 630201-07 PCC/HMA STABILIZATION AT STEEL PLATE BEAM GUARDRAIL
- 630301-09 SHOULDER WIDENING FOR TYPE 1 (SPECIAL) GUARDRAIL TERMINALS
- 631031-16 TRAFFIC BARRIER TERMINAL, TYPE 6
- 667101-02 PERMANENT SURVEY MARKERS
- 668001-01 U.S. GEOLOGICAL SURVEY AND NATIONAL GEODETIC SURVEY BENCHMARKS
- 701006-05 RESETTING METHOD
- 701006-05 OFF-ROAD OPERATIONS 2L, 2V, 15' (4.5 m) TO 24' (600 mm) FROM PAVEMENT EDGE
- 701011-04 OFF-ROAD MOVING OPERATIONS 2L, 2V, DAY ONLY
- 701301-04 LANE CLOSURE, 2L, 2V, SHORT TIME OPERATIONS
- 701306-04 LANE CLOSURE, 2L, 2V, SLOW MOVING OPERATIONS DAY ONLY, FOR SPEEDS ≥ 45 MPH
- 701311-03 LANE CLOSURE, 2L, 2V, MOVING OPERATIONS - DAY ONLY
- 701501-06 URBAN LANE CLOSURE, 2L, 2V, UNDIVIDED
- 701801-06 SIDEWALK CORNER OR CROSSWALK CLOSURE
- 701901-08 TRAFFIC CONTROL DEVICES
- 780001-05 TYPICAL PAVEMENT MARKINGS
- 781001-04 TYPICAL APPLICATIONS RAISED REFLECTIVE PAVEMENT MARKERS

**PROPOSED  
HIGHWAY PLANS**

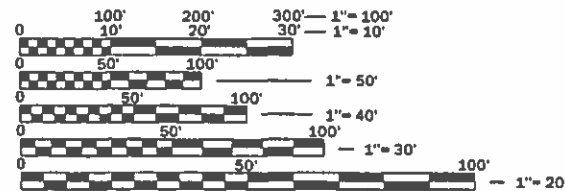
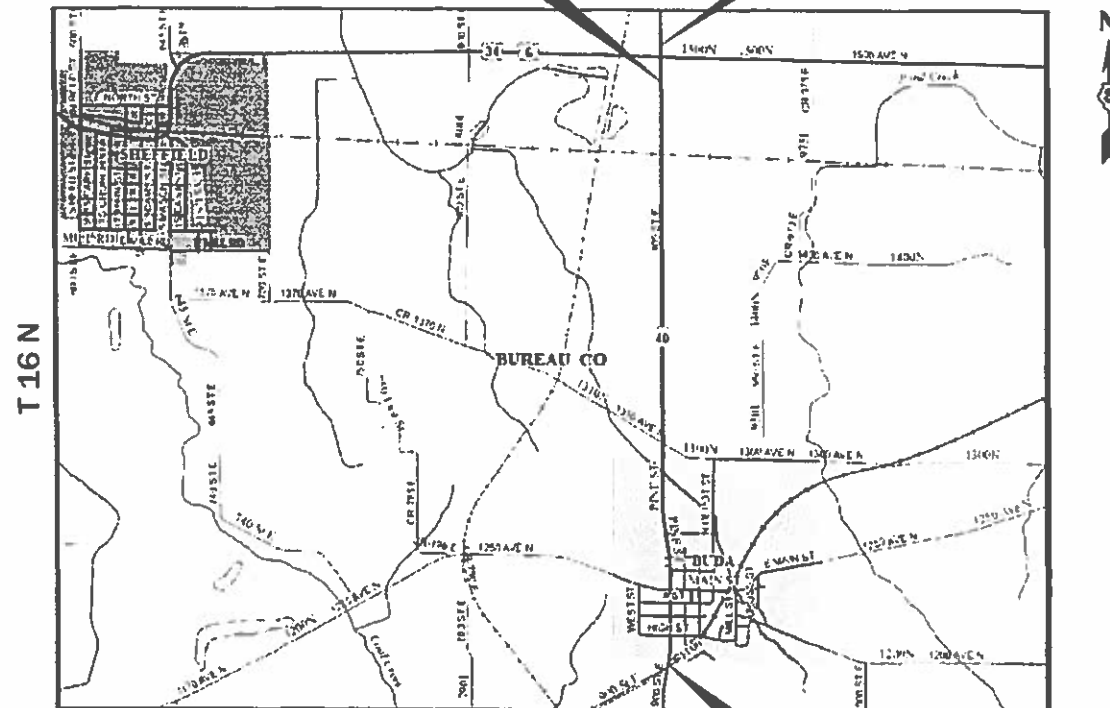
FAP ROUTE 646 (IL 40)  
SECTION (121,122)RS-5,SW  
PROJECT STP-DCKQ(295)  
3P MILLING & RESURFACING (ADA)  
BUREAU COUNTY

C-93-115-19



STA. EQ  
STA. 1521+18.86 BK =  
STA. 8+16.22 AH

PROJECT BEGINS  
STA. 1514+05



FULL SIZE PLANS HAVE BEEN PREPARED USING STANDARD ENGINEERING SCALES. REDUCED SIZED PLANS WILL NOT CONFORM TO STANDARD SCALES. IN MAKING MEASUREMENTS ON REDUCED PLANS, THE ABOVE SCALES MAY BE USED.

J.U.L.I.E.  
JOINT UTILITY LOCATION INFORMATION FOR EXCAVATION  
1-800-892-0123  
OR 811

PROJECT ENGINEER: BRAD DUNCAN, P.E.  
UNIT CHIEF: DARCY CARPENTER  
DISTRICT 3 NO. (815) 434-6131  
CONTRACT NO. 66K28

GROSS LENGTH = 16256.57 FT. = 3.08 MILE  
NET LENGTH = 16256.57 FT. = 3.08 MILE

PROJECT ENDS  
STA. 163+58.93  
N. ABUT. SN 006-0138

FUNCTION CLASSIFICATION  
RURAL MINOR ARTERIAL  
2019 ADT = 1950  
P.V. = 79.7% S.U. = 6.2% M.U. = 14.1%

STATE OF ILLINOIS  
DEPARTMENT OF TRANSPORTATION

SUBMITTED *March 17 2020*

*James Arnold*  
REGIONAL ENGINEER

MAY 8 2020

*Samuel J. ...*  
ENGINEER OF DESIGN AND ENVIRONMENT

MAY 8 2020

*Samuel J. ...*  
DIRECTOR OF HIGHWAYS PROJECT IMPLEMENTATION

PRINTED BY THE AUTHORITY  
OF THE STATE OF ILLINOIS

**GENERAL NOTES**

THE THICKNESS OF HMA SHOWN ON THE PLANS IS THE NOMINAL THICKNESS. DEVIATIONS FROM THE NOMINAL THICKNESS WILL BE PERMITTED WHEN SUCH DEVIATIONS OCCUR DUE TO IRREGULARITIES IN THE EXISTING SURFACE OR BASE ON WHICH THE HMA IS PLACED.

THE HMA SURFACE OF ALL MAILBOX TURNOUTS, PRIVATE ENTRANCES, COMMERCIAL ENTRANCES, AND SIDE ROADS SHALL BE MADE NEATLY, IN A WORKMANLIKE MANNER, AND SHALL ACCURATELY CONFORM TO THE SHAPES AND DIMENSIONS SHOWN ON THE PLAN DETAILS. IF REQUIRED BY THE ENGINEER, THE CONTRACTOR SHALL SAW CUT THE HMA SURFACE TO CONFORM TO THE SHAPES AND DIMENSIONS SHOWN ON THE PLAN DETAILS. THIS WORK WILL BE INCLUDED IN THE COST OF THE HMA SURFACE.

EXCEPT AS NOTED ON THE PLANS, PAVEMENT GRADES SHOWN ARE AT THE TOP OF PAVEMENT SURFACES.

THE ENGINEER WILL BE THE SOLE JUDGE CONCERNING CURING TIME FOR THE VARIOUS HMA LIFTS.

FOR STABILIZATION, ALL TYPE III BARRICADES WILL REQUIRE A MINIMUM OF FOUR SAND BAGS PER BARRICADE.

DETECTABLE WARNING SURFACES SHALL EXTEND 2.0 FT MINIMUM IN THE DIRECTION OF PEDESTRIAN TRAVEL. AT CURB RAMPS AND BLENDED TRANSITIONS, DETECTABLE WARNING SURFACES SHALL EXTEND THE FULL WIDTH OF THE RAMP RUN (EXCLUDING ANY FLARES) OR BLENDED TRANSITIONS. SOME DETECTABLE WARNING PRODUCTS REQUIRE A CONCRETE BORDER FOR PROPER INSTALLATION. THE CONCRETE BORDER SHALL NOT EXCEED 2 INCHES.

ON EXISTING PAVEMENT WHICH MAY BE SUPERELEVATED, THE NEW HMA PAVEMENT SHALL BE BUILT WITH THE SAME SUPERELEVATION UNLESS NEW SUPERELEVATION RATES ARE GIVEN ON THE PLANS.

ALL ELEVATIONS REFERRING TO U.S.G.S. MEAN SEA LEVEL DATUM.

ANY REFERENCE TO A STANDARD IN THESE PLANS SHALL BE INTERPRETED TO MEAN THE EDITION AS INDICATED BY THE SUBNUMBER SHOWN IN THE LIST OF STANDARDS OR THE COPY INCLUDED IN THESE PLANS.

THE FOLLOWING RATES OF APPLICATION HAVE BEEN USED IN CALCULATING PLAN QUANTITIES:

GRANULAR MATERIALS	2.05	TONS / CU YD
HMA RESURFACING	112	LBS / SQ YD / IN
SHORT TERM PAVEMENT MARKING	10	FT /100 FT OF APPLICATION
MIX FOR CRACKS, JTS & FLGWYS	0.0003	TONS / SQ YD
LEVEL BINDER (HAND METHOD)	0.0005	TONS / SQ YD
CALCIUM CHLORIDE	2	LB / SQ YD / APPLICATION
AGGREGATE DITCH CHECKS	5	TONS AGGREGATE

MEMBERS OF JULIE KNOWN TO BE WITHIN THE LIMITS OF THE IMPROVEMENT ARE: FRONTIER COMMUNICATIONS, AMEREN IP, MEDIACOM, AND VILLAGE OF BUDA.

THE CONTRACTOR SHALL CONTACT JULIE AT LEAST 48 HOURS PRIOR TO EXCAVATION TO DETERMINE WHICH UTILITIES ARE IN THE AREA.

STATE OF ILLINOIS  
DEPARTMENT OF TRANSPORTATION  
DISTRICT THREE  
AS BUILT INFORMATION

DATE: March 17, 2020

\_\_\_\_\_  
SUPERVISING CONSTRUCTION FIELD ENGINEER

\_\_\_\_\_  
RESIDENT ENGINEER / TECHNICIAN

START & END DATES  
OF CONSTRUCTION:

INSPECTORS:

PREPARED BY: *Tom Beaulieu*  
DISTRICT STUDIES & PLANS ENGINEER

EXAMINED BY: *Mike Valenzuela*  
DISTRICT CONSTRUCTION ENGINEER

*Michael A. Smith*  
DISTRICT MATERIALS ENGINEER

*Tom [Signature]*  
DISTRICT OPERATIONS ENGINEER

FILE NAME =	USER NAME = ple'schr	DESIGNED - _____	REVISED - _____	<b>STATE OF ILLINOIS DEPARTMENT OF TRANSPORTATION</b>	SCALE: _____ SHEET _____ OF _____ SHEETS STA. _____ TO STA. _____	F.A.P. RTE.	SECTION	COUNTY	TOTAL SHEETS	SHEET NO.	
p:\c:\planroom\dot\illinois.gov\PIV\DOT\Documents\IDOT	Offices\District 3\Projects\D366K28\CADData\CAD\sheet\0366K28	DRAWN - _____	REVISED - _____			646	(121.122)RS-5.SW	BUREAU	25	2	
Default:	PLOT SCALE = 1/32.0000" = 1 in.	CHECKED - _____	REVISED - _____			CONTRACT NO. 66K28					
	PLOT DATE = 3/17/2020	DATE - _____	REVISED - _____			ILLINOIS FED. AID PROJECT					

MODEL: Default  
 FILE: Model: 646\planroom.dwg  
 PROJECT: 646\planroom.dwg  
 OFFICE: 646\planroom.dwg  
 DATE: 3/17/2020

CODE NO.	ITEM	UNIT	TOTAL QUANTITY	CONSTR. CODE	
				FEDERAL 80%	STATE 20%
				ROADWAY	
				0005	RURAL
28000315	AGGREGATE DITCH CHECKS	TON	30		30
40600290	BITUMINOUS MATERIALS (TACK COAT)	POUND	5826		5826
40600400	MIXTURE FOR CRACKS, JOINTS, AND FLANGWAYS	TON	14		14
40600990	TEMPORARY RAMP	SQ YD	274		274
40602978	HOT-MIX ASPHALT BINDER COURSE, IL- 9.5, N50	TON	5344		5344
40604050	HOT-MIX ASPHALT SURFACE COURSE, IL-9.5, MIX "C", N50	TON	4676		4676
40800050	INCIDENTAL HOT-MIX ASPHALT SURFACING	TON	559		559
42400100	PORTLAND CEMENT CONCRETE SIDEWALK 4 INCH	SQ FT	2271		2271
* 42400800	DETECTABLE WARNINGS	SQ FT	252		252
44000100	PAVEMENT REMOVAL	SQ YD	167		167
44000164	HOT-MIX ASPHALT SURFACE REMOVAL, 3 3/4"	SQ YD	47717		47717
44000300	CURB REMOVAL	FOOT	81		81
44000500	COMBINATION CURB AND GUTTER REMOVAL	FOOT	24		24
44000600	SIDEWALK REMOVAL	SQ FT	2027		2027

\*= SPECIALTY ITEM

USER NAME = pletschtr PLOT SCALE = 100.0000' / in. PLOT DATE = 3/17/2020	DESIGNED - _____ DRAWN - _____ CHECKED - _____ DATE - _____	REVISED - _____ REVISED - _____ REVISED - _____ REVISED - _____	<b>STATE OF ILLINOIS          DEPARTMENT OF TRANSPORTATION</b>	<b>SUMMARY OF QUANTITIES</b> SCALE: _____ SHEET ____ OF ____ SHEETS STA. _____ TO STA. _____	F.A.P. RTE. 646 SECTION (121,122)RS-5,SW COUNTY BUREAU TOTAL SHEETS 25 SHEET NO. 3 CONTRACT NO. 66K28 ILLINOIS FED. AID PROJECT
--	--	--	--	---	---

MODEL: Default  
 FILE: \\nlsr01.pw.state.il.us\pub\room\data\illinois\pwr\WIDOT\Documents\DOT\_Offices\District\_3\Projects\66K28\CADDData\CAD\Sheet\66K28-11-500.dgn

CODE NO.	ITEM	UNIT	TOTAL QUANTITY	CONSTR. CODE	
				FEDERAL 80% STATE 20%	
				ROADWAY	
				0005	RURAL
48101200	AGGREGATE SHOULDERS, TYPE B	TON	1254	1254	
54390160	INSERTION CULVERT LINER 21"	FOOT	147	147	
60603800	COMBINATION CONCRETE CURB AND GUTTER, TYPE B-6.12	FOOT	354	354	
* 63000001	STEEL PLATE BEAM GUARDRAIL, TYPE A, 6 FOOT POSTS	FOOT	437.5	437.5	
* 63000350	LONG-SPAN GUARDRAIL OVER CULVERT, 12 FT 6 IN SPAN	FOOT	75	75	
* 63100085	TRAFFIC BARRIER TERMINAL, TYPE 6	EACH	2	2	
* 63100167	TRAFFIC BARRIER TERMINAL, TYPE 1 (SPECIAL) TANGENT	EACH	6	6	
63200310	GUARDRAIL REMOVAL	FOOT	787.5	787.5	
* 66700205	PERMANENT SURVEY MARKERS, TYPE I	EACH	2	2	
* 66900200	NON-SPECIAL WASTE DISPOSAL	CU YD	7	7	
* 66900530	SOIL DISPOSAL ANALYSIS	EACH	2	2	
* 66901001	REGULATED SUBSTANCES PRE-CONSTRUCTION PLAN	LSUM	1	1	
* 66901003	REGULATED SUBSTANCES FINAL CONSTRUCTION REPORT	LSUM	1	1	
* 66901006	REGULATED SUBSTANCES MONITORING	CAL DA	3	3	

\*= SPECIALTY ITEM

USER NAME = pletschtr PLOT SCALE = 100.0000' / in. PLOT DATE = 3/17/2020	DESIGNED - _____ DRAWN - _____ CHECKED - _____ DATE - _____	REVISED - _____ REVISED - _____ REVISED - _____ REVISED - _____	<b>STATE OF ILLINOIS DEPARTMENT OF TRANSPORTATION</b>	<b>SUMMARY OF QUANTITIES</b>	F.A.P. RTE. 646 SECTION (121,122)RS-5,SW COUNTY BUREAU TOTAL SHEETS 25 SHEET NO. 4 CONTRACT NO. 66K28	SCALE: _____ SHEET _____ OF _____ SHEETS STA. _____ TO STA. _____	ILLINOIS FED. AID PROJECT
--	--	--	---	------------------------------	--	---	---------------------------

MODEL: Default  
 FILE: Model2\_PlanUploadRoom.dwg  
 PROJECT: R:\Projects\66K28\CADDData\CAD\Sheet\66K28-11-500.dgn

CODE NO.	ITEM	UNIT	TOTAL QUANTITY	CONSTR. CODE	
				FEDERAL 80% STATE 20%	
				ROADWAY	
				0005	RURAL
67000400	ENGINEER'S FIELD OFFICE, TYPE A	CAL MO	5	5	
67100100	MOBILIZATION	L SUM	1	1	
70100460	TRAFFIC CONTROL AND PROTECTION, STANDARD 701306	L SUM	1	1	
70102640	TRAFFIC CONTROL AND PROTECTION, STANDARD 701801	L SUM	1	1	
70300100	SHORT TERM PAVEMENT MARKING	FOOT	2438	2438	
70300150	SHORT TERM PAVEMENT MARKING REMOVAL	SQ FT	268	268	
* 72501000	TERMINAL MARKER - DIRECT APPLIED	EACH	6	6	
* 78000100	THERMOPLASTIC PAVEMENT MARKING - LETTERS AND SYMBOLS	SQ FT	122	122	
* 78000500	THERMOPLASTIC PAVEMENT MARKING - LINE 8"	FOOT	224	224	
* 78000600	THERMOPLASTIC PAVEMENT MARKING - LINE 12"	FOOT	528	528	
* 78000650	THERMOPLASTIC PAVEMENT MARKING - LINE 24"	FOOT	176	176	
* 78001110	PAINT PAVEMENT MARKING - LINE 4"	FOOT	83338	83338	
* 78001130	PAINT PAVEMENT MARKING - LINE 6"	FOOT	6858	6858	
* 78100100	RAISED REFLECTIVE PAVEMENT MARKER	EACH	203	203	

\*= SPECIALTY ITEM

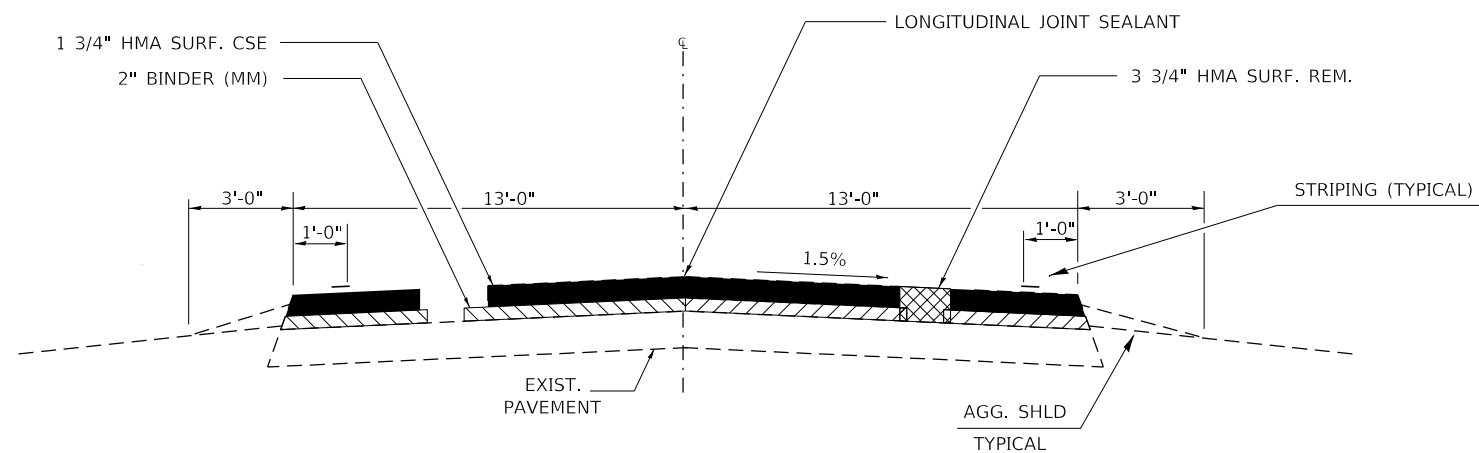
USER NAME = pletschtr	DESIGNED - _____	REVISED - _____	<b>STATE OF ILLINOIS DEPARTMENT OF TRANSPORTATION</b>	<b>SUMMARY OF QUANTITIES</b>			F.A.P. RTE.	SECTION	COUNTY	TOTAL SHEETS	SHEET NO.
PLOT SCALE = 100.0000' / in.	DRAWN - _____	REVISED - _____					646	(121,122)RS-5,SW	BUREAU	25	5
PLOT DATE = 3/17/2020	CHECKED - _____	REVISED - _____		SCALE: _____ SHEET ____ OF ____ SHEETS STA. _____ TO STA. _____			CONTRACT NO. 66K28				
DATE - _____	REVISED - _____	REVISED - _____					ILLINOIS FED. AID PROJECT				

MODEL: Default  
 FILE: \\nrcs-pub\pub\room\dat\illinois.gov\PI\DOT\Documents\DOT\_Offices\Dir\dtc\_3\Projects\036628\CAD\Drawings\036628-11-500.dgn

CODE NO.	ITEM	UNIT	TOTAL QUANTITY	CONSTR. CODE	
				FEDERAL 80%	STATE 20%
				ROADWAY	
				0005	RURAL
* 78200005	GUARDRAIL REFLECTORS, TYPE A	EACH	11		11
X0327809	LINEAR DELINEATOR PANELS, 4 INCH	EACH	7		7
X4401198	HOT-MIX ASPHALT SURFACE REMOVAL, VARIABLE DEPTH *	SQ YD	4993		4993
X4810200	AGGREGATE SHOULDER REMOVAL	CU YD	8		8
X5420624	PIPE CULVERTS TO BE CLEANED 24"	FOOT	46		46
X6030310	FRAMES AND LIDS TO BE ADJUSTED (SPECIAL)	EACH	2		2
* X7830090	GROOVING FOR RECESSED PAVEMENT MARKING 25"	FOOT	176		176
* Z0005216	HOT-MIX ASPHALT STABILIZATION 6" AT STEEL PLATE BEAM GUARD RAIL	SQ YD	220		220
Z0005305	BOX CULVERTS TO BE CLEANED	FOOT	53		53
Z0030850	TEMPORARY INFORMATION SIGNING	SQ FT	42		42
Z0033700	LONGITUDINAL JOINT SEALANT	FOOT	16518		16518
Z0048665	RAILROAD PROTECTIVE LIABILITY INSURANCE	L SUM	1		1

\*= SPECIALTY ITEM

USER NAME = pletschtr	DESIGNED - _____	REVISED - _____	<b>STATE OF ILLINOIS DEPARTMENT OF TRANSPORTATION</b>	<b>SUMMARY OF QUANTITIES</b>			F.A.P. RTE.	SECTION	COUNTY	TOTAL SHEETS	SHEET NO.
PLOT SCALE = 100,0000' / in.	CHECKED - _____	REVISED - _____					646	(121,122)RS-5,SW	BUREAU	25	6
PLOT DATE = 3/17/2020	DATE - _____	REVISED - _____		SCALE: _____ SHEET ____ OF ____ SHEETS STA. _____ TO STA. _____			CONTRACT NO. 66K28				
							ILLINOIS FED. AID PROJECT				



**TYPICAL SECTION**

STA 1514+05 - 1521+18.86  
 STA EQ 1521+18.86 BK = 8+16.22 AH  
 STA 8+16.22 - 163+58.93

HMA MIXTURE REQUIREMENT TABLE			
LOCATIONS:	ENTIRE PROJECT	ENTIRE PROJECT	ENTIRE PROJECT
MIXTURE USE(S):	HMA SURFACE	HMA BINDER	INCIDENTAL HMA
BINDER GRADE (PG):	PG 64-22	PG 64-22	PG 64-22
DESIGN AIR VOIDS:	4.0% @ N50	4.0% @ N50	4.0% @ N50
MIXTURE COMPOSITION: (MIXTURE GRADATION)	IL 9.5	IL 9.5	IL 9.5
FRICTION AGGREGATE:	MIXTURE C	MIXTURE C	MIXTURE C
MIXTURE WEIGHT:	112.0 LB/SY/IN	112.0 LB/SY/IN	112.0 LB/SY/IN
QUALITY MANAGEMENT PROGRAM:	QCP	QCP	QCQA
SUBLOT SIZE:	1000 TONS	1000 TONS	NA
DENSITY TEST METHOD:	CORES	CORES	SATISFACTION OF ENGINEER

FILE NAME =	USER NAME = pletschr	DESIGNED -	REVISOR -
pw:\planroom.dot.illinois.gov\PIDOT\Documents\IDOT Offices\District 3\Projects\0366K28\Drawings\CABsheets\0366K28-sht-typical.dwg		CHECKED -	REVISOR -
		DATE -	REVISOR -

**STATE OF ILLINOIS  
 DEPARTMENT OF TRANSPORTATION**

**TYPICAL SECTIONS**  
 SCALE: \_\_\_\_\_ SHEET NO. 1 OF 1 SHEETS STA. \_\_\_\_\_ TO STA. \_\_\_\_\_

F.A.P. RTE.	SECTION	COUNTY	TOTAL SHEETS	SHEET NO.
646	(121,122)RS-5,SW	BUREAU	25	7
			CONTRACT NO. 66K28	
ILLINOIS FED. AID PROJECT				

MAINLINE SCHEDULE												
STA. TO STA.	LENGTH	WIDTH	HMA SURF CSE MIX "C" N50 (1 3/4")	BINDER COURSE IL 9.5 N50 (2")	HMA SURF REM 3 3/4"	MIX FOR JTS, CRACKS & FLGWYS	LONG JOINT SEALANT	BIT. MAT'L (TACK COAT)	AGG SHLD TY B	TEMP RAMP		
	FT	FT	TONS	TONS	SQ YD	TONS	FOOT	POUND	TONS	SQ YD		
IL 40												
1514+05	1516+05	200	26	56.6	65	578	0.2	200	43	15.2	8.7	
1516+05	1521+18.86	514	26	145.5	166	1484	0.4	514	111	39.0	8.7	
STATION EQUATION 1521+188.86 BK = 8+16.22 AH												
8+16.22	28+97.50	2081	26	589.2	673	6013	1.8	2081	451	158.0	8.7	
IAIS RAILROAD 29+02												
29+06.50	52+83.00	2377	26	672.8	769	6865	2.1	2377	515	180.4	8.7	
52+83.00	105+30.00	5247	26	1485.5	1698	15158	4.5	5247	1137	398.4	8.7	
105+30.00	129+67.00	2437	26	689.9	789	7040	2.1	2437	528	185.0	8.7	
129+67.00	135+86.00	619	26	175.2	200	1788	0.5	619	134	47.0	8.7	
135+86.00	139+44.00	358	26	101.4	116	1034	0.3	358	78	27.2	8.7	
139+44.00	144+35.00	491	26	139.0	159	1418	0.4	491	106	37.3	8.7	
144+35.00	147+87.00	352	26	99.7	114	1017	0.3	352	76	26.7	8.7	
147+87.00	151+45.00	358	26	101.4	116	1034	0.3	358	78	27.2	8.7	
151+45.00	156+65.00	520	26	147.2	168	1502	0.5	520	113	39.5	8.7	
156+65.00	163+58.93	694	26	196.5	225	2005	0.6	694	150	52.7	8.7	
US 6 / US 34												
1152+00.00	1153+50.00	150	26	42.5	49	433	0.1	150	33	11.4	8.7	
1153+50.00	1154+70.00	120	26	34.0	39	347	0.1	120	26	9.1	8.7	
TOTALS					4676	5344	47717	14	16518	3579	1254	130

PAVEMENT MARKING SCHEDULE															
LOCATION				PAINT						THERMOPLASTIC		GROOVING FOR REC PAVT MRK - 25"	SHORT-TERM MARK	SHORT-TERM PAVT MARK REM	RAISED REFLECTIVE PVMT MARKERS
				4" WHITE FOOT	4" YELLOW FOOT	6" YELLOW FOOT	8" WHITE FOOT	12" WHITE FOOT	24" WHITE FOOT	LTRS, NUM & SYMBOLS SQ FT					
STA															
1514+05.00	TO	1516+05.00	200.00	400		50	131	286	64		64	30	3	3	
1516+05.00	TO	1521+18.86	513.86	1027.72		128	93	242	64		64	77	8	6	
STA. EQ.		1521+18.86 BK = 8+16.22 AH													
8+16.22	TO	28+97.50	2081.28	4162.56		520			24	61	24	312	34	26	
28+97.50	TO	163+58.93	13461.43	26922.86		2730			24	61	24	2019	222	168	
NO PASSING ZONES															
23+62	TO	30+23	SB 661.00		661.0										
27+99	TO	34+57	NB 658.00		658.0										
41+28	TO	41+40	SB 12.00		12.0										
51+40	TO	66+53	NB 1513.00		1513.0										
53+40	TO	68+54	SB 1514.00		1514.0										
74+09	TO	87+87	SB 1378.00		1378.0										
83+38	TO	98+20	NB 1482.00		1482.0										
150+20	TO	163+59	SB 1338.93		1338.9										
157+60	TO	163+59	NB 598.93		598.9										
SUB TOTAL				32513	9156	3429	224	528	176	122	176	2438	268	203	
SECOND APPLICATION OF PAINT				32513	9156	3429									
GRAND TOTAL				83338		6858	224	528	176	122	176	2438	268	203	

(1) R.E. TO VERIFY NO PASSING ZONES PRIOR TO MILLING OPERATION

MODEL: Default  
FILE: \\nlsplbarnom.dca\illinois.gov\PWD\DOT\Documents\DOT\_Offices\Bldgct\_3\Projects\036628\CADDData\CAD\Sheet\036628-5-17-schedule.dgn

USER NAME = pletschtr	DESIGNED - _____	REVISED - _____
	DRAWN - _____	REVISED - _____
PLOT SCALE = 100,0000 ' / in.	CHECKED - _____	REVISED - _____
PLOT DATE = 3/17/2020	DATE - _____	REVISED - _____

STATE OF ILLINOIS  
DEPARTMENT OF TRANSPORTATION

SCHEDULES

SCALE: \_\_\_\_\_ SHEET \_\_\_\_ OF \_\_\_\_ SHEETS STA. \_\_\_\_\_ TO STA. \_\_\_\_\_

F.A.P. RTE.	SECTION	COUNTY	TOTAL SHEETS	SHEET NO.
646	(121,122)RS-5,SW	BUREAU	25	8
CONTRACT NO. 66K28				
ILLINOIS		FED. AID PROJECT		



ILL RTE 40		LOCATION: US 6/34 TO BNSF RR S OF BUDA			BUREAU COUNTY	
MONUMENT NUMBER	DESCRIPTION	EXISTING MONUMENT TYPE	PROPOSED MONUMENT TYPE	MONUMENT RECORD TO BE RECORDED	RESPONSIBILITY	
40015	E QTR CORNER SECTION 28, T16N, R7E, 4TH PM	PK NAIL	TYPE 1	YES	1	
40014	SE CORNER SECTION 28, T16N, R7E, 4TH PM	PK NAIL	TYPE 1	YES	1	

UNKNOWN MONUMENTS SET BY OTHERS MAY EXIST. IF FOUND, R.E. WILL DIRECT PLATS AND PLANS TO OBTAIN COORDINATES ON ANY FOUND MONUMENT(S) SUBJECT TO DESTRUCTION FROM THE RESURFACING WORK.  
R.E. WILL DIRECT PLATS AND PLANS TO SEARCH FOR ADDITIONAL MONUMENTS IF THE JOB LIMITS ARE EXPANDED DURING CONSTRUCTION.  
UPON PAVING COMPLETION, R.E. WILL DIRECT PLATS AND PLANS TO STAKE THE LOCATIONS FOR TYPE 1 MONUMENT CORING.  
NOTE: FOR BIDDING PURPOSES, NO CONTRACTED LAND SURVEYING SERVICES WILL BE REQUIRED FOR SETTING THE LISTED PERMANENT SURVEY MARKERS.  
PLATS AND PLANS WILL PREPARE AND RECORD THE REQUIRED MONUMENT RECORDS.

**RESPONSIBILITY:**

- 1) RESIDENT TO RE-ESTABLISH MONUMENT (PAY ITEM REQUIRED. PERMANENT SURVEY MARKER, TYPE 1)
- 2) PLATS AND PLANS TO RE-ESTABLISH MONUMENT

SIDEROADS & ENTRANCES									
NAME	STATION	MATERIAL	RT/LT	WIDTH FRONT	WIDTH BACK	VARIABLE DEPTH SURF REM	INCIDENTAL HMA SURF MIX "C"	BIT MATL (TACK COAT)	TEMP RAMP
						SQ YD	N50 TON	POUND	SQ YD
US 6/34	1516+05	HMA	RT	235	30	826.7	92.6	372.0	10.0
US 6/34	1516+05	HMA	LT	235	28	913.3	102.3	411.0	9.3
RAILROAD CROSSING	29+02								
1410 N AVE.	52+83	HMA/AGG	RT	50	40	50.0	5.6	22.5	13.3
PE	52+89	HMA/AGG	LT	50	30	44.4	5.0	20.0	
PE	53+17	HMA/AGG	RT	25	20	25.0	2.8	11.3	
PE	58+76	HMA/AGG	RT	62	35	53.9	6.0	24.3	
PE/MBTO	61+03	HMA/AGG	LT	80	15	52.8	5.9	23.8	
PE	84+10	HMA/AGG	LT	100	62	90.0	10.1	40.5	
1310 AVE. NORTH	105+30	HMA	RT	80	27	178.3	20.0	80.3	9.0
1310 AVE. NORTH	105+30	HMA	LT	90	25	191.7	21.5	86.3	8.3
SCHOOL ST.	129+67	HMA	LT	90	34	68.9	7.7	31.0	11.3
STEWART ST.	135+86	HMA	LT	75	23	54.4	6.1	24.5	7.7
CE	135+86	HMA/AGG	RT	130	95	125.0	14.0	56.3	
PE	138+03	HMA/CONC	LT	25	23	26.7	3.0	12.0	
PE	138+43	HMA/AGG	RT	32	13	50.0	5.6	22.5	
PE	138+94	HMA/CONC	RT	50	10	33.3	3.7	15.0	
NORTH ST.	139+44	HMA	LT	40	20	100.0	11.2	45.0	6.7
PE	140+20	HMA	RT	24	12	20.0	2.2	9.0	
PE x 2	141+90	HMA/AGG/CONC	RT	35	25	33.3	3.7	15.0	
PE	143+26	HMA/AGG	RT	20	12	17.8	2.0	8.0	
MAIN ST.	144+35	HMA	RT	65	35	166.7	18.7	75.0	11.7
MAIN ST.	144+35	HMA	LT	85	35	200.0	22.4	90.0	11.7
PE	145+60	HMA/AGG	LT	40	25	36.1	4.0	16.3	
PE	145+82	HMA/CONC	RT	32	20	28.9	3.2	13.0	
CE	146+38	HMA/CONC	LT	70	35	58.3	6.5	26.3	
CE	147+09	HMA/CONC	LT	60	35	52.8	5.9	23.8	
A ST.	147+87	HMA	RT	40	20	100.0	11.2	45.0	6.7
A ST.	147+87	HMA	LT	40	20	100.0	11.2	45.0	6.7
PE	149+02	HMA/CONC	LT	20	10	16.7	1.9	7.5	
PE	149+68	HMA/AGG	LT	20	12	17.8	2.0	8.0	
B ST.	151+45	HMA	RT	45	25	116.7	13.1	52.5	8.3
B ST.	151+45	HMA	LT	45	25	116.7	13.1	52.5	8.3
PE	153+14	HMA/AGG	LT	15	10	13.9	1.6	6.3	
PE	153+71	HMA/CONC	RT	40	30	38.9	4.4	17.5	
CE	154+55	CONC	LT						
CE	155+20	CONC	LT						
HIGH ST.	156+65	HMA	RT	42	22	106.7	11.9	48.0	7.3
HIGH ST.	156+65	HMA	LT	42	22	106.7	11.9	48.0	7.3
CE	157+05	HMA/AGG	RT	47	37	46.7	5.2	21.0	
CE	157+95	HMA/AGG	RT	95	83	98.9	11.1	44.5	
PE x 3	158+80	HMA/AGG	LT	318	130	248.9	27.9	112.0	
PE	159+00	CONC	RT						
PE	160+02	CONC	RT						
CE	161+01	HMA/AGG	LT	77	32	181.7	20.3	81.8	
CE	162+04	HMA/AGG	LT	79	32	185.0	20.7	83.3	
TOTALS						4993.3	559.3	2247.0	143.7

MODEL: Default  
FILE: \\bldg01\pub\lhamon.dwg  
PLOT DATE: 3/17/2020  
PROJECT: \\bldg01\pub\lhamon.dwg  
OFFICE: \\bldg01\pub\lhamon.dwg  
DRAWN: \\bldg01\pub\lhamon.dwg  
CHECKED: \\bldg01\pub\lhamon.dwg  
DATE: 3/17/2020

USER NAME = pletschr	DESIGNED - _____	REVISED - _____
DRAWN - _____	REVISIONS - _____	
PLOT SCALE = 100,0000' / in.	CHECKED - _____	REVISED - _____
PLOT DATE = 3/17/2020	DATE - _____	REVISED - _____

**STATE OF ILLINOIS  
DEPARTMENT OF TRANSPORTATION**

<b>SCHEDULES</b>			
SCALE: _____	SHEET _____	OF _____	SHEETS
STA. _____	TO STA. _____		

F.A.P. RTE. 646	SECTION (121,122)RS-5,SW	COUNTY BUREAU	TOTAL SHEETS 25	SHEET NO. 9
CONTRACT NO. 66K28			ILLINOIS FED. AID PROJECT	

SIDEWALK SCHEDULE FOR NEW RAMP INSTALLATION								
LOCATION SIDE STREET	QUAD	SIDEWALK REMOVAL	PCC SIDEWALK 4"	CURB REMOVAL	CC&G REMOVAL	CC&G	PAV'T REM	DETECTABLE WARNINGS
		SQ FT	SQ FT	FOOT	FOOT	FOOT	SQ YD	SQ FT
STEWART ST.	NE	87.2	100.8			15.4		10
	SE	31.5	68.5			16.8		10
NORTH ST.	NE	53.9	62.9			9.7	1.8	8
	SE	69.4	98.2			9.7	1.0	8
MAIN ST.	NW	161.1	173.7	8		26.1	4.9	16
	SW	141.5	145.7	8		26.1	5.4	16
	NE	129.9	161.4			25.1	10.5	16
	SE	139.7	144.9		24.3	24.2	3.3	16
A ST.	NW	186	156.3	24.8		27	3.5	16
	NE	164.2	161.6	10		23.3	3.9	16
	SW	53.6	58.5					8
	SE	34.6	39.3					8
B ST.	NW	129.7	144	20.3		23.5	45.5	16
	SW	131	137.7	10		25.8	4.7	16
	NE	101.9	120.5			23.8	5.9	16
	SE	121.9	144.9			26.8	66.0	16
HIGH ST.	NW	43.1	50.3			25.4		8
	NE	97	120.4				5.3	16
	SE	149.5	180.9			25.4	5.3	16
<b>TOTAL</b>		<b>2027</b>	<b>2271</b>	<b>81</b>	<b>24</b>	<b>354</b>	<b>167</b>	<b>252</b>

EXCESS EARTHEN MATERIAL FROM THIS WORK CAN BE PLACED AROUND SIDEROAD RADII.

DRAINAGE SCHEDULE			
LOCATION	PIPE CULVERTS TO BE CLEANED 24"	BOX CULVERTS TO BE CLEANED	INSERTION CULVERT LINER 2 @ 21"
STA. TO STA.	FOOT	FOOT	FOOT
IL 40			
66+00	46.0		
95+63		53.0	
<b>US 6 / 34</b>			
1152+49			147.0
	<b>46</b>	<b>53</b>	<b>147</b>

\* ALL EXCAVATED MATERIAL, WHICH INCLUDES DIGGING OR GRADING OF ANY SOIL OR FILL MATERIAL, WITH THE EXCEPTION OF AGGREGATE FILLS, MUST BE INCORPORATED WITHIN THE IDOT RIGHT OF WAY DUE ENVIRONMENTAL DOCUMENTATION REQUIREMENTS AT THESE LOCATIONS.

AGG DITCH CHECK		
LOCATION	SIDE	AGGREGATE DITCH CHECK
		TONS
77+50	LT&RT	5
78+25	LT&RT	5
79+25	LT&RT	5
80+25	LT&RT	5
81+50	LT&RT	5
83+00	LT&RT	5
<b>TOTALS</b>		<b>30</b>

\*THERE ARE EXISTING AGGREGATE DITCH AND STEEL DITCH CHECKS AT THESE LOCATIONS. THE STEEL PILING WILL BE REMOVED AND ADDITIONAL AGGREGATE WILL BE PLACED AT THESE LOCATIONS TO THE TOP OF THE EXISTING STEEL DITCH CHECKS.

GUARDRAIL SCHEDULE											
LOCATION	LENGTH OF NEED	GUARD- RAIL REM	TBT TY 1 SPECIAL TANGENT	TBT TYPE 6	SPBGR TY A 6 FT POSTS	LONGSPAN GUARDRAIL 12' 6"	AGGREGATE SHOULDER REMOVAL*	HMA STAB 6" AT SPBGR (IL 19.0, N50)	LINEAR DELINEATOR PANELS 4"	GUARD- RAIL REFL TY A	TERMINAL MARKER DIRECT APPLIED
STA TO STA	FOOT	FOOT	EACH	EACH	FOOT	FOOT	CU YD	SQYD	EACH	EACH	EACH
NW QUAD (006-0138)	100	87.5	1	1	25		1.2	33	1	1	1
NE QUAD (006-0138)	100	87.5	1	1	25		1.2	33	1	1	1
SB APPROACH (006-2523)	187.5	187.5	1		137.5	18.75	1.9	52	2	3	1
SB DEPARTURE (006-2523)	137.5	137.5	1		75	18.75	1.1	31	1	2	1
NB APPROACH (006-2523)	150	150	1		100	18.75	1.5	40	1	2	1
NB DEPARTURE (006-2523)	137.5	137.5	1		75	18.75	1.1	31	1	2	1
<b>TOTAL</b>		<b>787.5</b>	<b>6</b>	<b>2</b>	<b>437.5</b>	<b>75</b>	<b>8</b>	<b>220</b>	<b>7</b>	<b>11</b>	<b>6</b>

\*AGGREGATE SHOULDER REMOVAL TO BE USED WHERE HMA STABILIZATION AT GUARDRAIL IS REQUIRED. THIS MATERIAL SHALL BE ALLOWED TO BE MOVED OFF SITE AT THE ENGINEER'S DISCRETION.

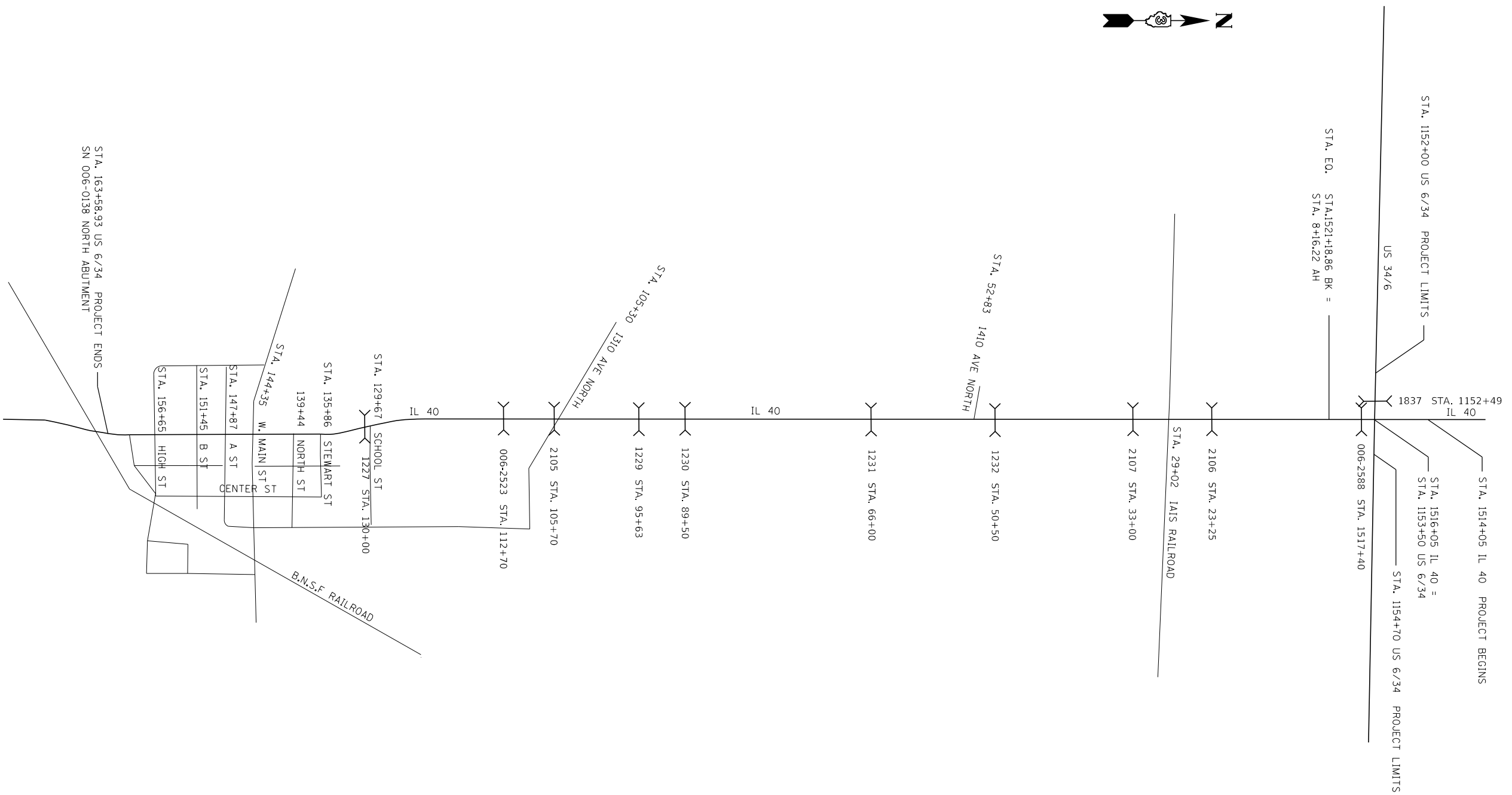
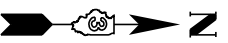
MODEL: Default  
FILE: \miller\p10\planningroom\dta\illinois\gov\p10\DOT\Documents\IDOT\_Offices\IDOT\3\Projects\0366\2B\CADDData\CAD\sheet\0366\2B\pl-schedule.dgn

USER NAME = pletschtr	DESIGNED - _____	REVISED - _____
	DRAWN - _____	REVISED - _____
PLOT SCALE = 100.0000 ' / in.	CHECKED - _____	REVISED - _____
PLOT DATE = 3/17/2020	DATE - _____	REVISED - _____

**STATE OF ILLINOIS  
DEPARTMENT OF TRANSPORTATION**

<b>SCHEDULES</b>	
SCALE: _____	SHEET ____ OF ____ SHEETS
STA. _____	TO STA. _____

F.A.P. RTE.	SECTION	COUNTY	TOTAL SHEETS	SHEET NO.
646	(121,122)RS-5,SW	BUREAU	25	10
CONTRACT NO. 66K28				
ILLINOIS FED. AID PROJECT				



STA. 163+58.93 US 6/34 PROJECT ENDS  
SN 006-0138 NORTH ABUTMENT

STA. EQ. STA.1521+18.86 BK =  
STA. 8+16.22 AH

MODEL: Default  
FILE: Model2\_PlanUploadRoom.dwg  
PROJECT: P:\PROJECTS\DOT\Documents\DOT\_Offices\District 3\Projects\0366K28\CADD\Drawings\0366K28-PL-Details.dwg

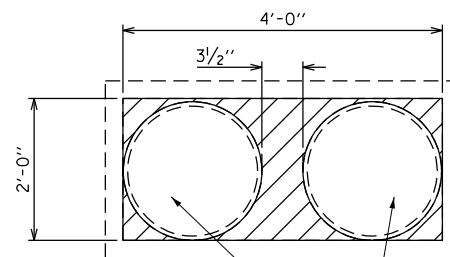
USER NAME = pletschtr	DESIGNED - _____	REVISED - _____
DRAWN - _____	REVISIONS - _____	REVISIONS - _____
PLOT SCALE = 300,0000' / in.	CHECKED - _____	REVISIONS - _____
PLOT DATE = 3/17/2020	DATE - _____	REVISIONS - _____

**STATE OF ILLINOIS  
DEPARTMENT OF TRANSPORTATION**

**PROJECT LAYOUT**

SCALE: \_\_\_\_\_ SHEET \_\_\_\_ OF \_\_\_\_ SHEETS STA. \_\_\_\_\_ TO STA. \_\_\_\_\_

F.A.P. RTE.	SECTION	COUNTY	TOTAL SHEETS	SHEET NO.
646	(121,122)RS-5,SW	BUREAU	25	11
CONTRACT NO. 66K28				
ILLINOIS FED. AID PROJECT				



147' (73.5' EACH) x 21" CORRUGATED PVC PIPE W/SMOOTH INTERIOR

**CULVERT #1837**

**NOTES:**

1. EXISTING BOX CULVERT SHALL BE DEWATERED AND CLEANED OF ALL FOREIGN MATERIALS.
2. PIPE CULVERTS SHALL BE INSERTED INTO EXISTING BOX CULVERT AS SHOWN ON PLAN DETAIL.
3. HATCHED AREA REPRESENTS APPROVED GROUT MIXTURE.
4. THIS WORK WILL BE PAID FOR AT THE CONTRACT UNIT PRICE PER FOOT FOR INSERTION CULVERT LINER.

FILE NAME =	USER NAME = pletschr	DESIGNED - _____	REVISED - _____
p:\planroom.dot.illinois.gov\PIDOT\Documents\IDOT Offices\District 3\Projects\0366K28\CAD\Drawings\0366K28-Culvert1837.dwg		DRAWN - _____	REVISED - _____
Default	PLOT SCALE = 100.0000' / in.	CHECKED - _____	REVISED - _____
	PLOT DATE = 3/17/2020	DATE - _____	REVISED - _____

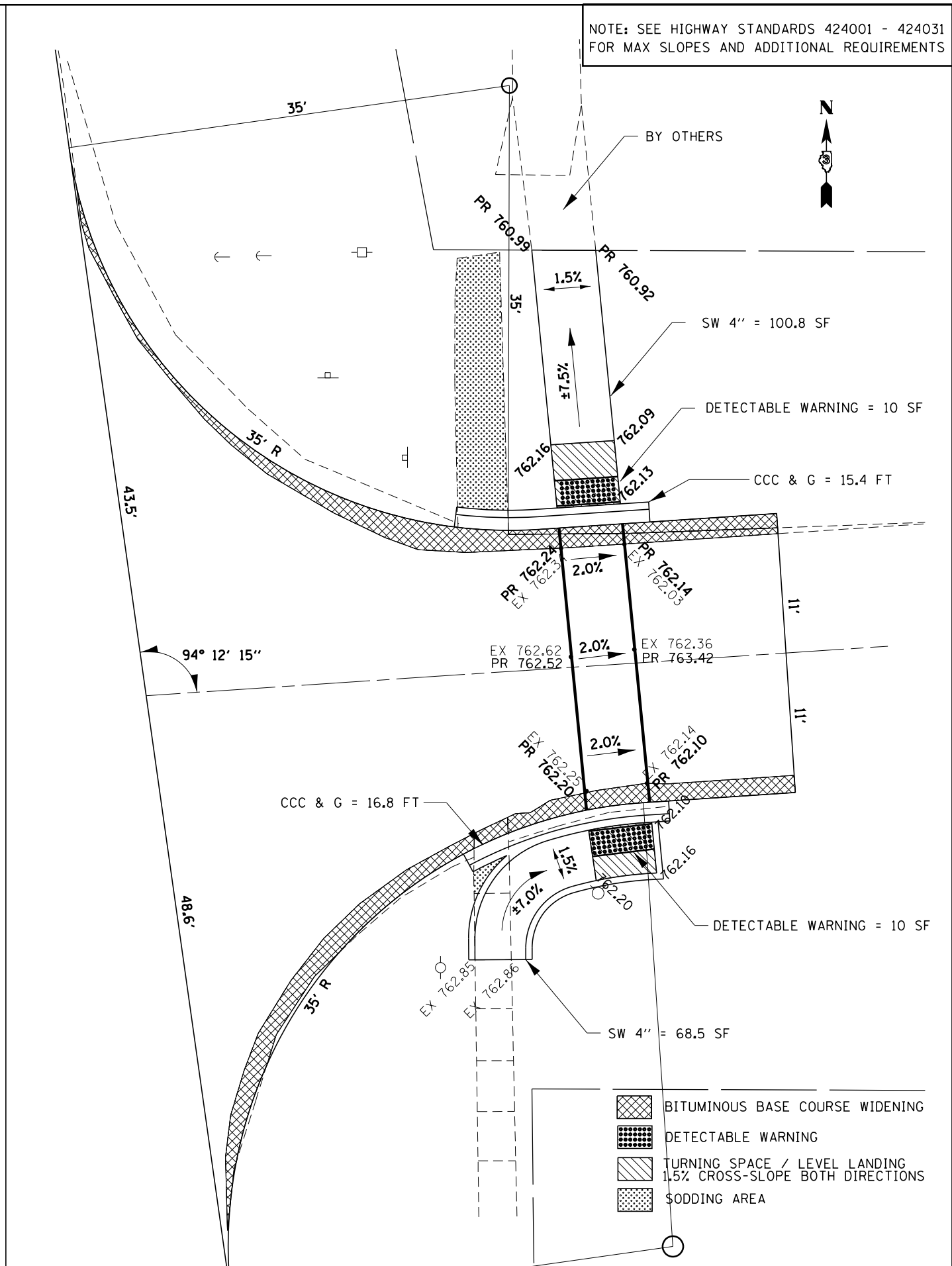
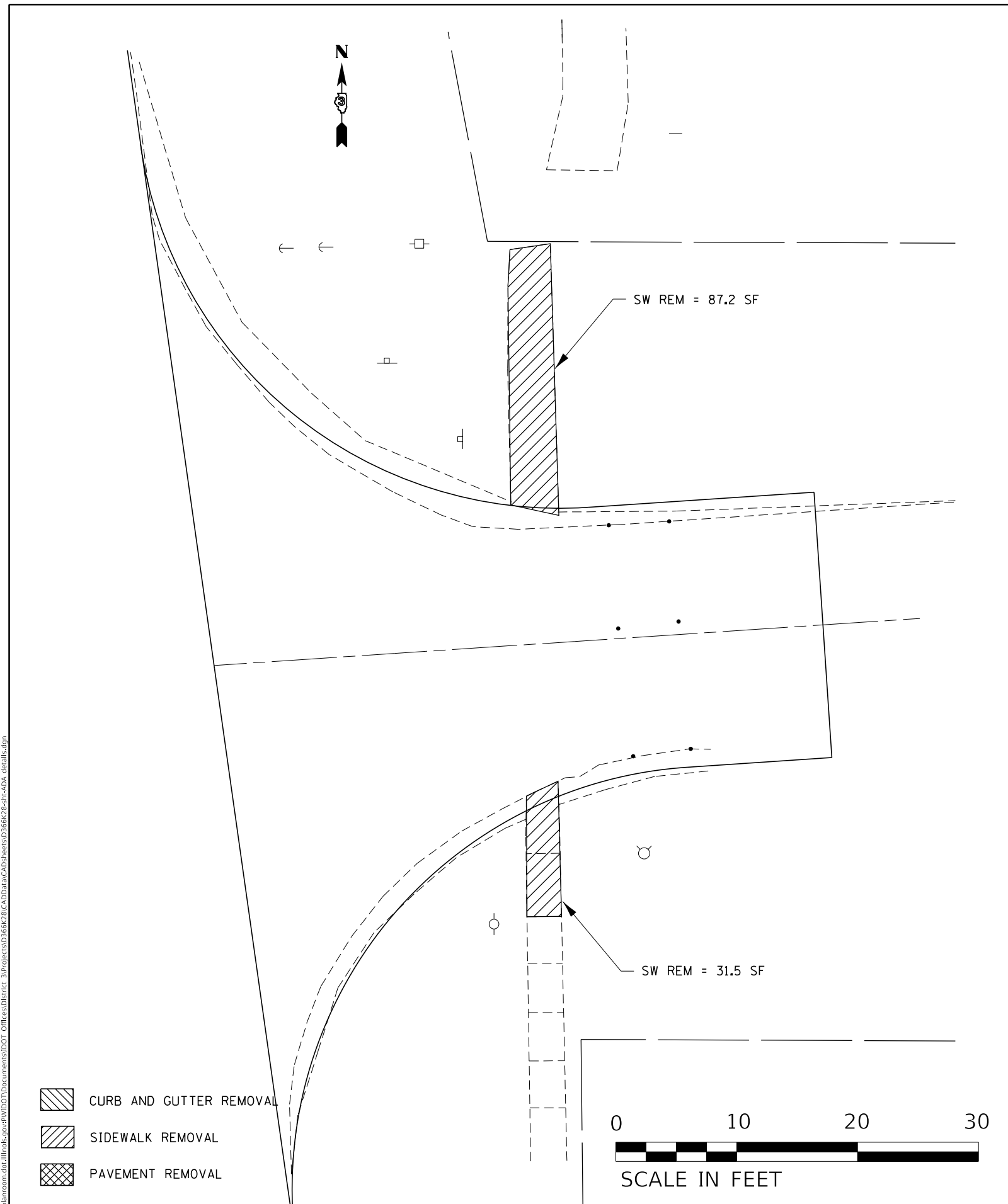
**STATE OF ILLINOIS  
DEPARTMENT OF TRANSPORTATION**

**INSERTION LINER  
CULVERT #1837**

SCALE: \_\_\_\_\_ SHEET 1 OF 1 SHEETS STA. \_\_\_\_\_ TO STA. \_\_\_\_\_

F.A.P. RTE.	SECTION	COUNTY	TOTAL SHEETS	SHEET NO.
646	(121,122)RS-5,SW		25	12
			CONTRACT NO. 66K28	
ILLINOIS FED. AID PROJECT				

NOTE: SEE HIGHWAY STANDARDS 424001 - 424031 FOR MAX SLOPES AND ADDITIONAL REQUIREMENTS



- CURB AND GUTTER REMOVAL
- SIDEWALK REMOVAL
- PAVEMENT REMOVAL



- BITUMINOUS BASE COURSE WIDENING
- DETECTABLE WARNING
- TURNING SPACE / LEVEL LANDING  
1.5% CROSS-SLOPE BOTH DIRECTIONS
- SODDING AREA

MODEL: Default  
FILE: \\nrcs-pub\pub\arcom\ada\illinois\p\p\DOT\Documents\DOT - Offices\Illin\3\Projects\121122\121122RS-5\SW-ADA\_details.dgn

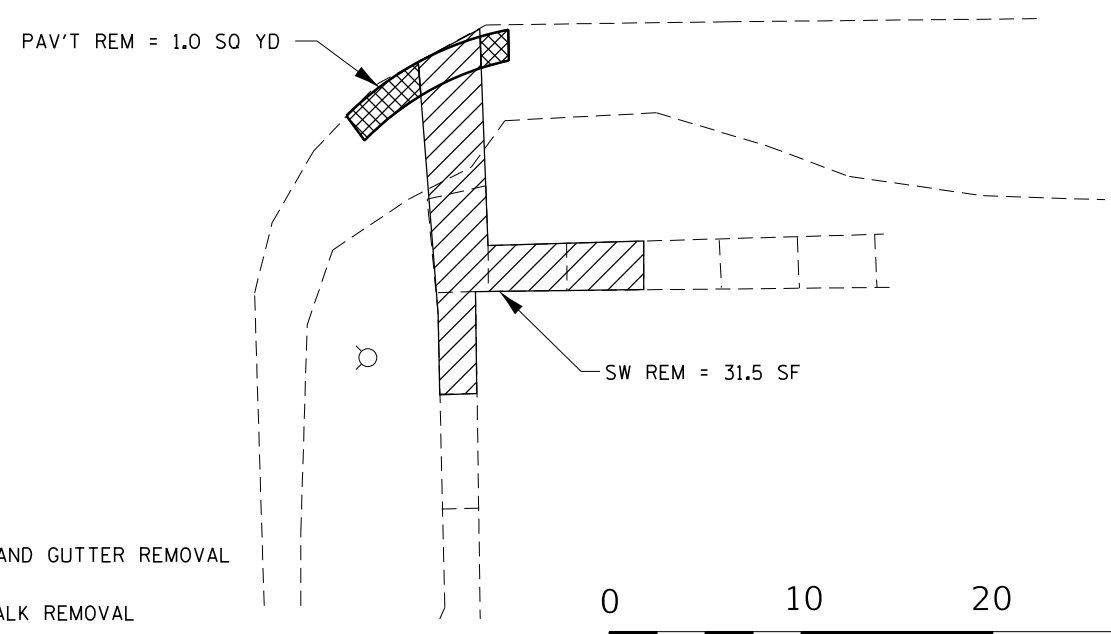
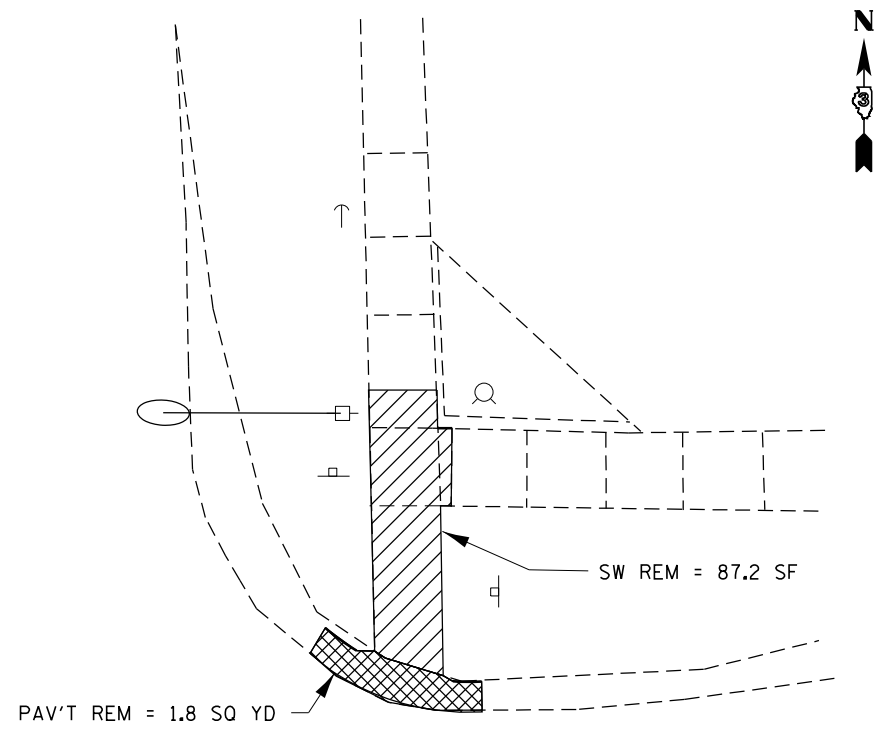
USER NAME = pletschr	DESIGNED - _____	REVISED - _____
DRAWN - _____	REVISOR - _____	REVISED - _____
PLOT SCALE = 10.0000' / in.	CHECKED - _____	REVISED - _____
PLOT DATE = 3/17/2020	DATE - _____	REVISED - _____

**STATE OF ILLINOIS  
DEPARTMENT OF TRANSPORTATION**

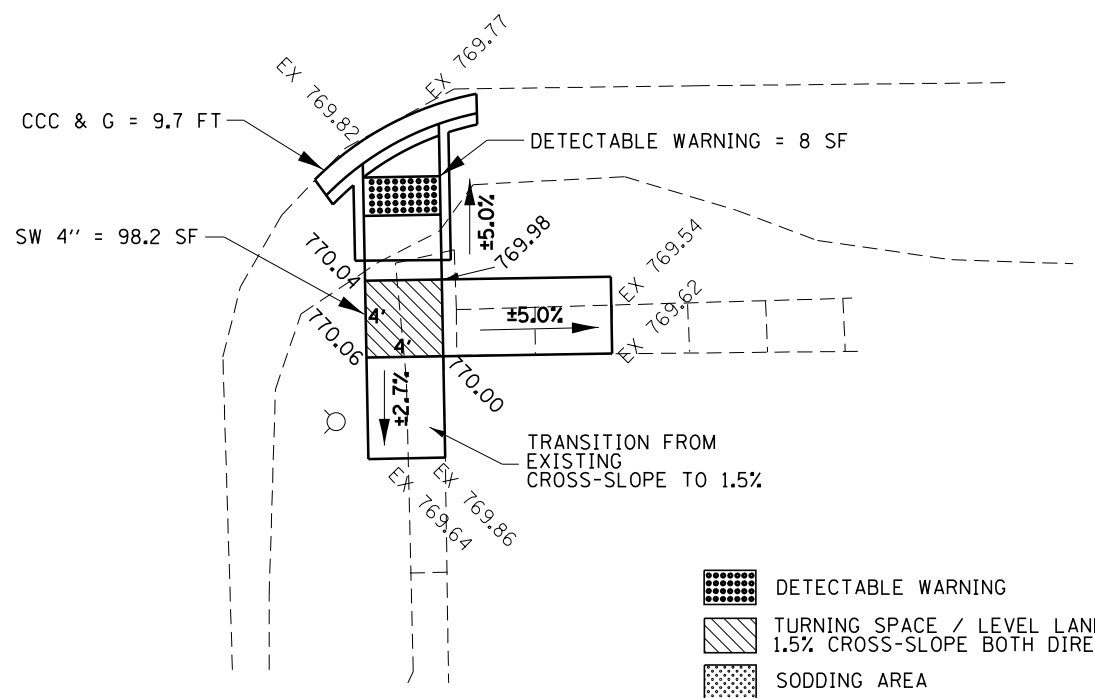
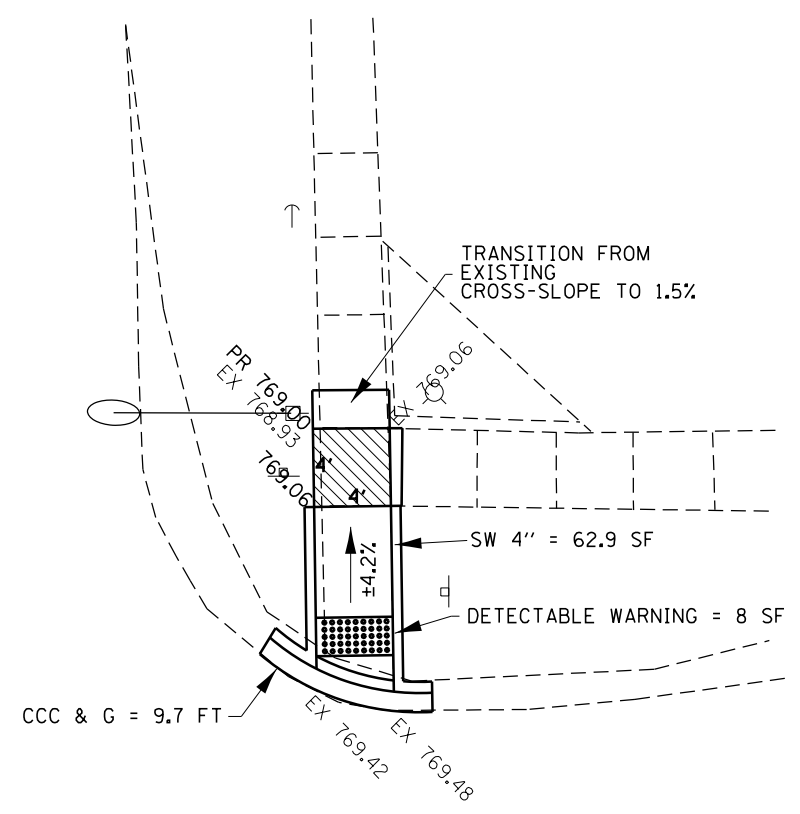
**ADA DETAILS  
STEWART STREET**

SCALE: \_\_\_\_\_ SHEET \_\_\_\_\_ OF \_\_\_\_\_ SHEETS STA. \_\_\_\_\_ TO STA. \_\_\_\_\_

F.A.P. RTE. 646	SECTION (121,122)RS-5,SW	COUNTY BUREAU	TOTAL SHEETS 25	SHEET NO. 13
CONTRACT NO. 66K28			ILLINOIS FED. AID PROJECT	



- CURB AND GUTTER REMOVAL
- SIDEWALK REMOVAL
- PAVEMENT REMOVAL



- DETECTABLE WARNING
- TURNING SPACE / LEVEL LANDING  
1.5% CROSS-SLOPE BOTH DIRECTIONS
- SODDING AREA

NOTE: SEE HIGHWAY STANDARDS 424001 - 424031 FOR MAX SLOPES AND ADDITIONAL REQUIREMENTS

MODEL: Default  
 FILE: Model: 3/17/2020 10:00:00 AM  
 PROJECT: 66K28 - ADA Details  
 SHEET: 14 of 25  
 DATE: 3/17/2020

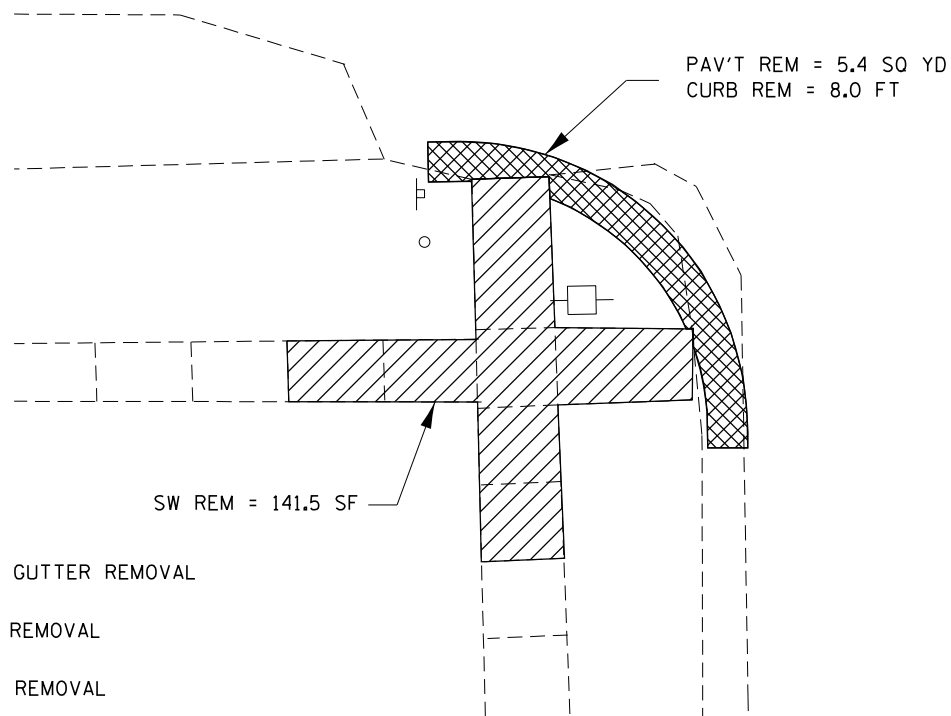
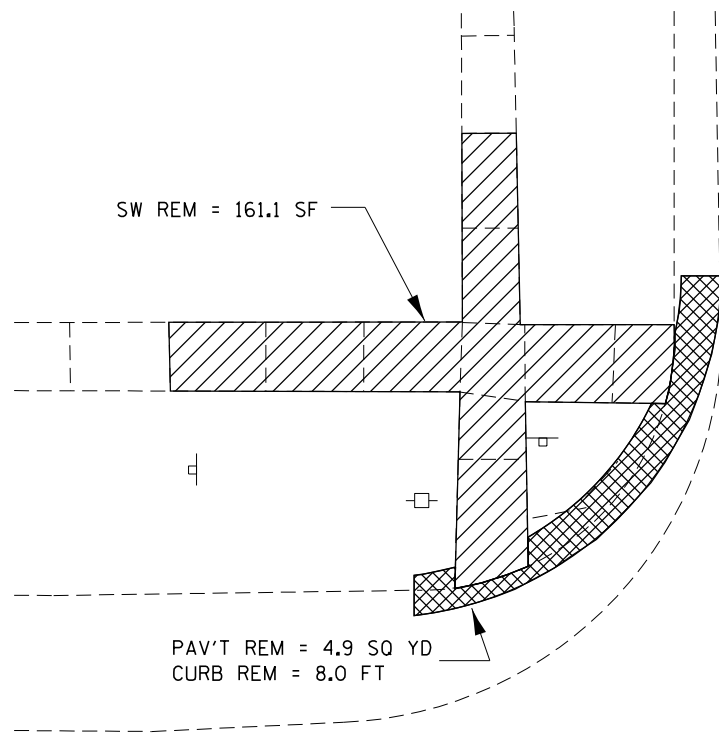
USER NAME = pletschr	DESIGNED - _____	REVISED - _____
DRAWN - _____	REVISED - _____	
PLOT SCALE = 10.0000 "/td> <td>CHECKED - _____</td> <td>REVISED - _____</td>	CHECKED - _____	REVISED - _____
PLOT DATE = 3/17/2020	DATE - _____	REVISED - _____

**STATE OF ILLINOIS  
DEPARTMENT OF TRANSPORTATION**

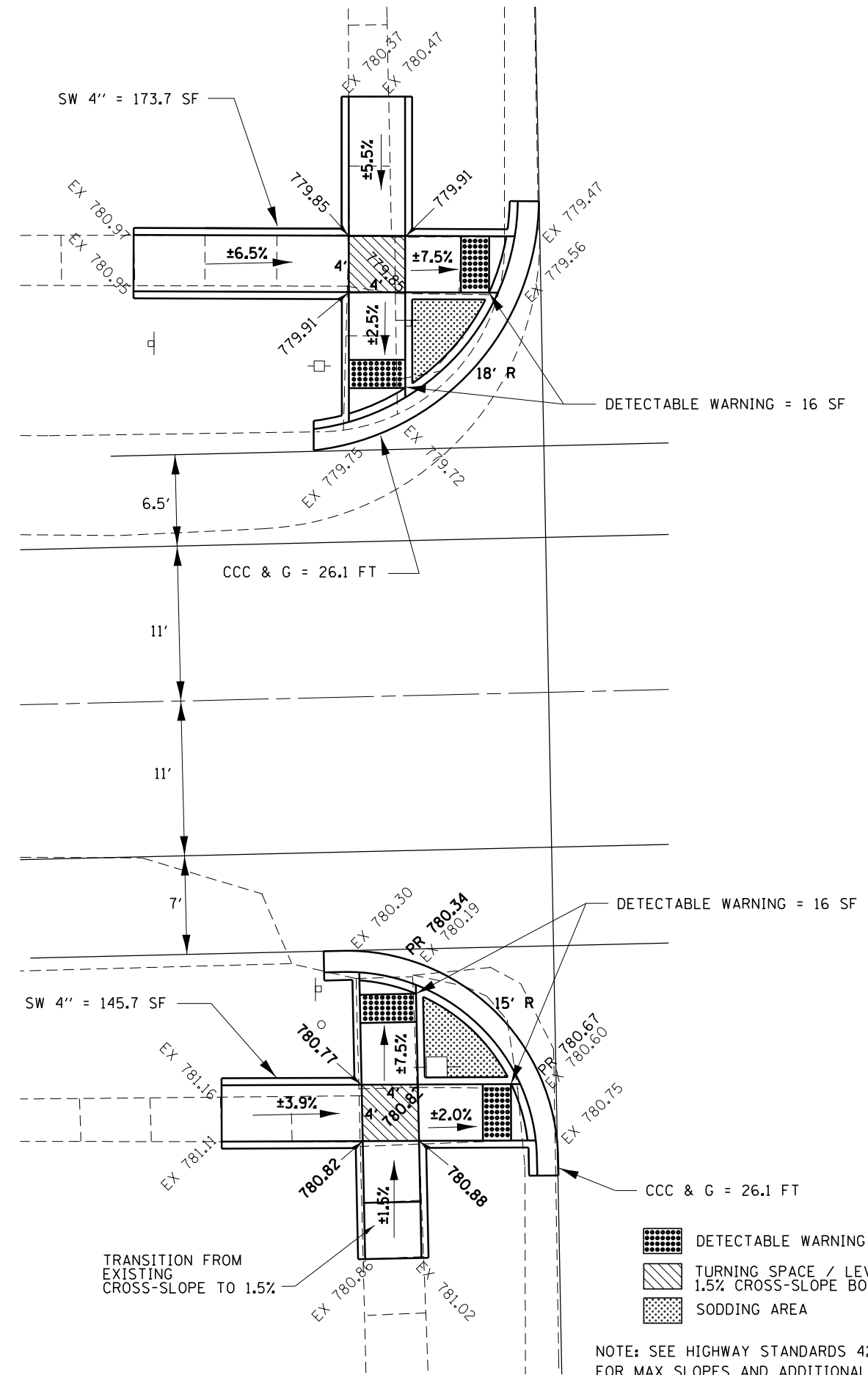
**ADA DETAILS  
NORTH STREET**

SCALE: \_\_\_\_\_ SHEET \_\_\_\_\_ OF \_\_\_\_\_ SHEETS STA. \_\_\_\_\_ TO STA. \_\_\_\_\_

F.A.P. RTE.	SECTION	COUNTY	TOTAL SHEETS	SHEET NO.
646	(121,122)RS-5,SW	BUREAU	25	14
ILLINOIS FED. AID PROJECT			CONTRACT NO. 66K28	



- CURB AND GUTTER REMOVAL
- SIDEWALK REMOVAL
- PAVEMENT REMOVAL



- DETECTABLE WARNING
- TURNING SPACE / LEVEL LANDING  
1.5% CROSS-SLOPE BOTH DIRECTIONS
- SODDING AREA

NOTE: SEE HIGHWAY STANDARDS 424001 - 424031 FOR MAX SLOPES AND ADDITIONAL REQUIREMENTS

MODEL: Default  
FILE: Main: P:\pub\baronm.dwg  
PROJECT: 036628\CADD\Drawings\DOT Office\Drawings\3\Projects\036628\CADD\Drawings\036628-11-ADA\_details.dwg

USER NAME = pletschr	DESIGNED - _____	REVISED - _____
PLOT SCALE = 10.0000 ' / in.	DRAWN - _____	REVISED - _____
PLOT DATE = 3/17/2020	CHECKED - _____	REVISED - _____
	DATE - _____	REVISED - _____

**STATE OF ILLINOIS  
DEPARTMENT OF TRANSPORTATION**

**ADA DETAILS  
MAIN STREET NW & SW QUADS**

SCALE: \_\_\_\_\_ SHEET \_\_\_\_\_ OF \_\_\_\_\_ SHEETS STA. \_\_\_\_\_ TO STA. \_\_\_\_\_

F.A.P. RTE.	SECTION	COUNTY	TOTAL SHEETS	SHEET NO.
646	(121,122)RS-5,SW	BUREAU	25	15
CONTRACT NO. 66K28				
ILLINOIS FED. AID PROJECT				



SW REM = 129.9 SF

PAV'T REM = 10.5 SQ YD

- CURB AND GUTTER REMOVAL
- SIDEWALK REMOVAL
- PAVEMENT REMOVAL

PAV'T REM = 3.3 SQ YD

CURB REMOVAL = 24.3 FT

SW REM = 139.7 SF



DETECTABLE WARNING = 16 SF

EX 779.53

6.5'

11'

11'

7'

DETECTABLE WARNING = 16 SF

EX 780.39

EX 780.45



18' R

±4.8%

±3.5%

EX 780.50

EX 780.41

779.66

±3.0%

±5.5%

EX 779.34

15' R

EX 779.34

EX 779.81

EX 779.63

EX 779.13

PR 779.13

EX 780.15

EX 780.17

EX 780.17

EX 780.23

EX 780.23

EX 780.29

EX 780.09

EX 779.20

EX 779.38

EX 779.15

EX 779.19

EX 779.66

EX 779.66

EX 779.61

EX 779.61

EX 779.61

EX 779.61

EX 779.61

EX 779.61

EX 779.61

EX 779.61

EX 779.61

EX 779.61

EX 779.61

±3.8%

±3.3%

±3.3%

±3.3%

±3.3%

±3.3%

±3.3%

±3.3%

±3.3%

±3.3%

±3.3%

±3.3%

±3.3%

±3.3%

±3.3%

±3.3%

±3.3%

SW 4" = 161.4 SF

CCC & G = 25.1 FT

CCC & G = 24.2 FT

TRANSITION FROM EXISTING CROSS-SLOPE TO 1.5%

SW 4" = 144.9 SF

- DETECTABLE WARNING
- TURNING SPACE / LEVEL LANDING
- 1.5% CROSS-SLOPE BOTH DIRECTIONS
- SODDING AREA

NOTE: SEE HIGHWAY STANDARDS 424001 - 424031 FOR MAX SLOPES AND ADDITIONAL REQUIREMENTS

MODEL: Default  
FILE: Main: P:\pub\baronm.dwg  
PROJECT: P:\pub\baronm.dwg  
OFFICE: P:\pub\baronm.dwg  
DATE: 3/17/2020

USER NAME = pltschtr	DESIGNED - _____	REVISED - _____
DRAWN - _____	REVISIONS - _____	REVISIONS - _____
PLOT SCALE = 10.0000' / in.	CHECKED - _____	REVISIONS - _____
PLOT DATE = 3/17/2020	DATE - _____	REVISIONS - _____

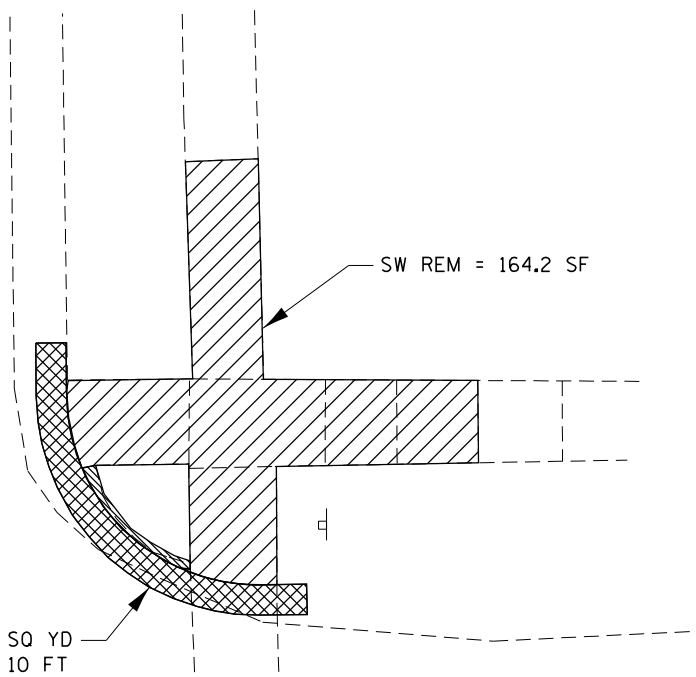
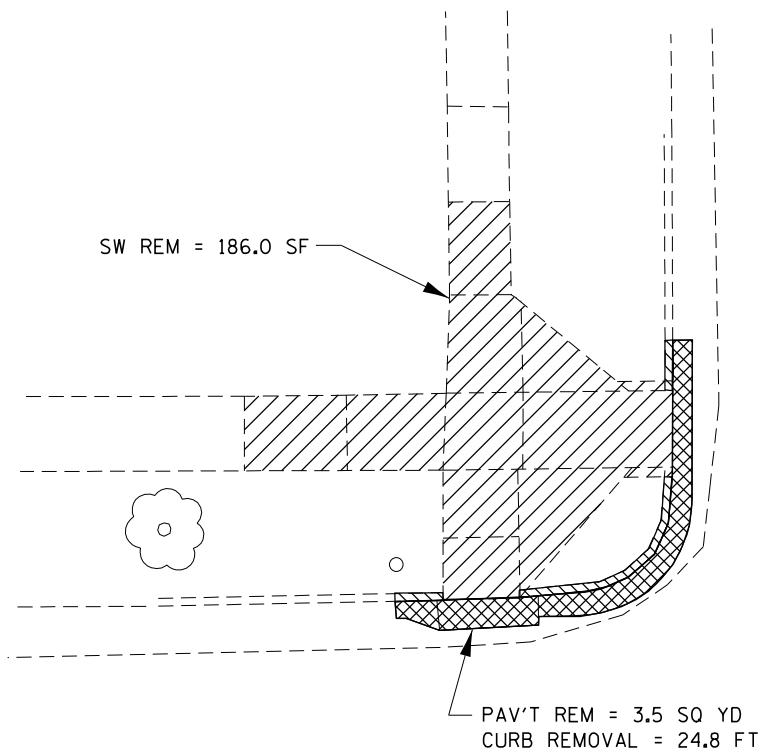
STATE OF ILLINOIS  
DEPARTMENT OF TRANSPORTATION

ADA DETAILS  
MAIN STREET NE & SE QUADS

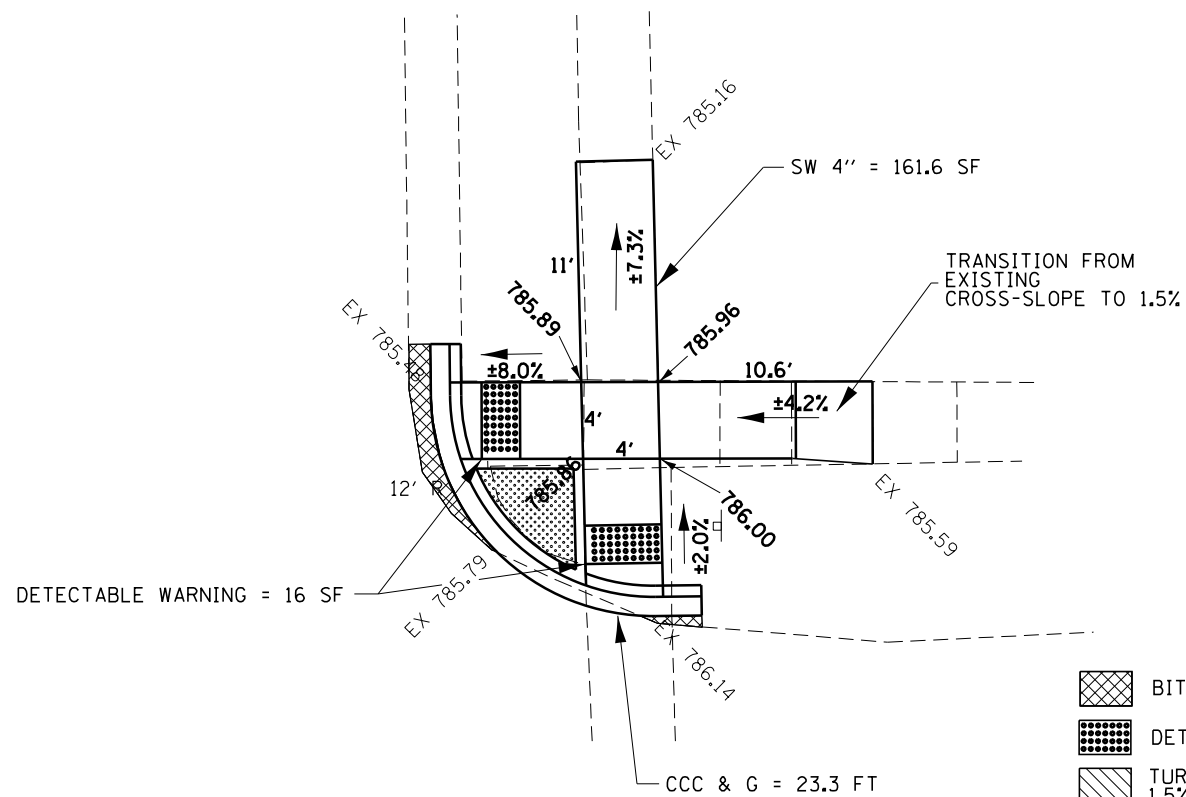
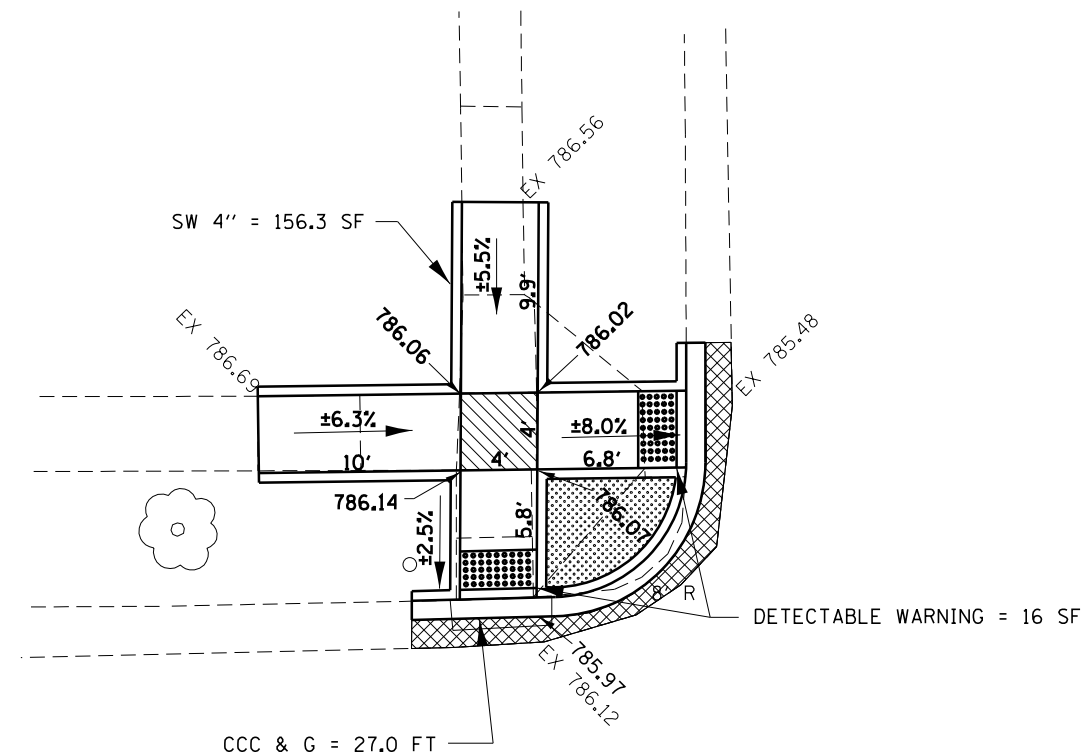
SCALE: \_\_\_\_\_ SHEET \_\_\_\_\_ OF \_\_\_\_\_ SHEETS STA. \_\_\_\_\_ TO STA. \_\_\_\_\_

F.A.P. RTE. 646	SECTION (121,122)RS-5,SW	COUNTY BUREAU	TOTAL SHEETS 25	SHEET NO. 16
CONTRACT NO. 66K28			ILLINOIS FED. AID PROJECT	





- CURB AND GUTTER REMOVAL
- SIDEWALK REMOVAL
- PAVEMENT REMOVAL



- BITUMINOUS BASE COURSE WIDENING
- DETECTABLE WARNING
- TURNING SPACE / LEVEL LANDING  
1.5% CROSS-SLOPE BOTH DIRECTIONS
- SODDING AREA

NOTE: SEE HIGHWAY STANDARDS 424001 - 424031 FOR MAX SLOPES AND ADDITIONAL REQUIREMENTS

MODEL: Default  
FILE: \\nrcs-pub\pubroom\ada\illinois\pww\DOT\Documents\DOT\_Offices\Illin\ct 3\Projects\1366228\CADD\Drawings\CAD\Sheet\1366228-11-ADA\_details.dgn

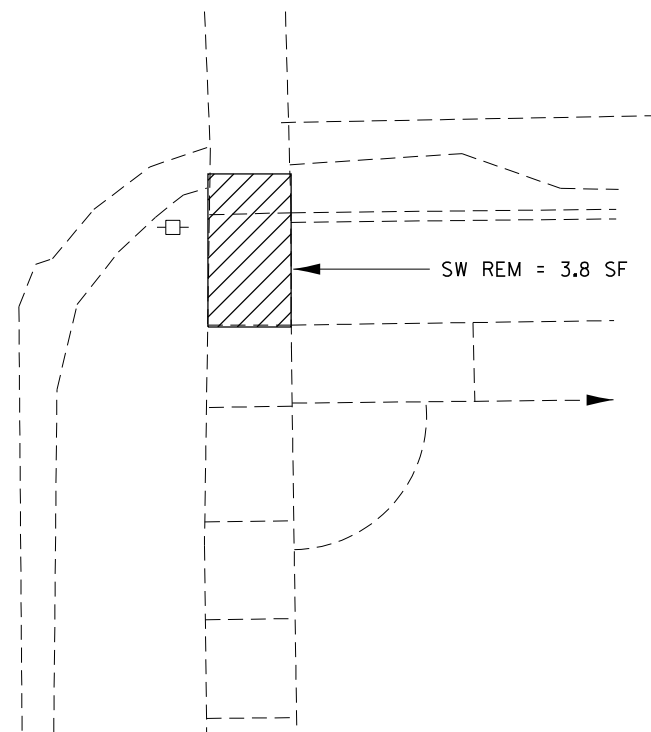
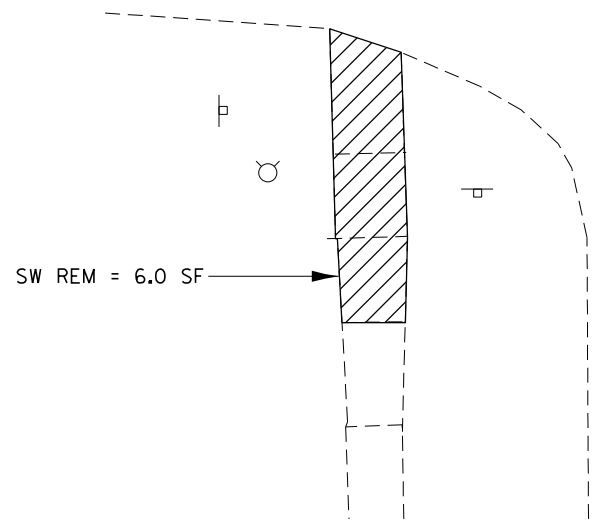
USER NAME = pletschr	DESIGNED - _____	REVISED - _____
PLOT SCALE = 10.0000' / in.	DRAWN - _____	REVISED - _____
PLOT DATE = 3/17/2020	CHECKED - _____	REVISED - _____
	DATE - _____	REVISED - _____

**STATE OF ILLINOIS  
DEPARTMENT OF TRANSPORTATION**

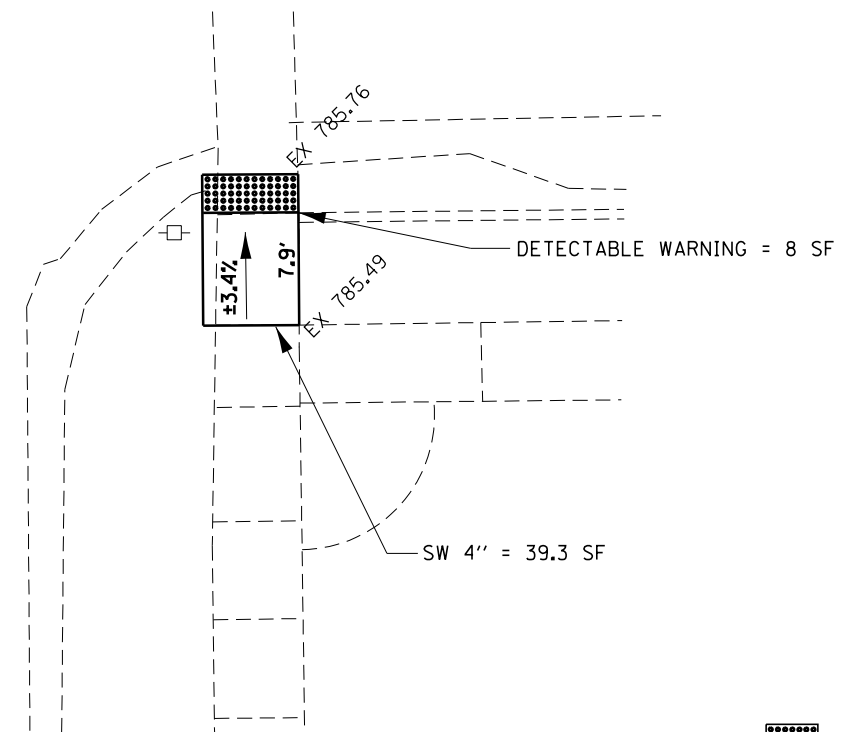
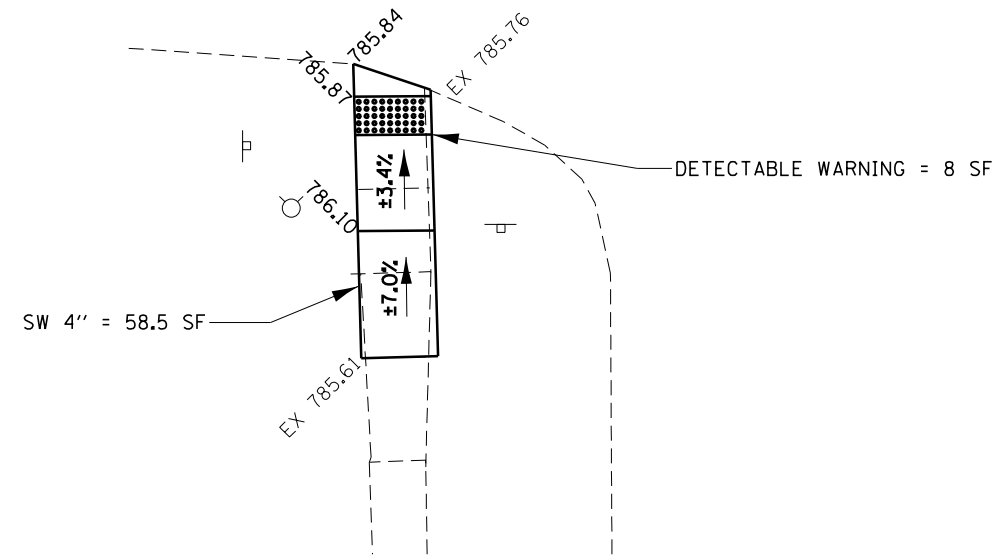
**ADA DETAILS  
A STREET (NW & NE QUADS)**

SCALE: \_\_\_\_\_ SHEET \_\_\_\_\_ OF \_\_\_\_\_ SHEETS STA. \_\_\_\_\_ TO STA. \_\_\_\_\_

F.A.P. RTE.	SECTION	COUNTY	TOTAL SHEETS	SHEET NO.
646	(121,122)RS-5,SW	BUREAU	25	17
CONTRACT NO. 66K28				
ILLINOIS FED. AID PROJECT				



- CURB AND GUTTER REMOVAL
- SIDEWALK REMOVAL
- PAVEMENT REMOVAL



- DETECTABLE WARNING
- TURNING SPACE / LEVEL LANDING  
1.5% CROSS-SLOPE BOTH DIRECTIONS
- SODDING AREA

NOTE: SEE HIGHWAY STANDARDS 424001 - 424031 FOR MAX SLOPES AND ADDITIONAL REQUIREMENTS

MODEL: Default  
FILE: \\nas01c.psu.edu\pub\arcom\ada\illinois\pwr\PROJECTS\DOT\Office\Drawings\3\Projects\12366228\CADDData\CAD\Sheet\12366228-11-ADA\_details.dgn

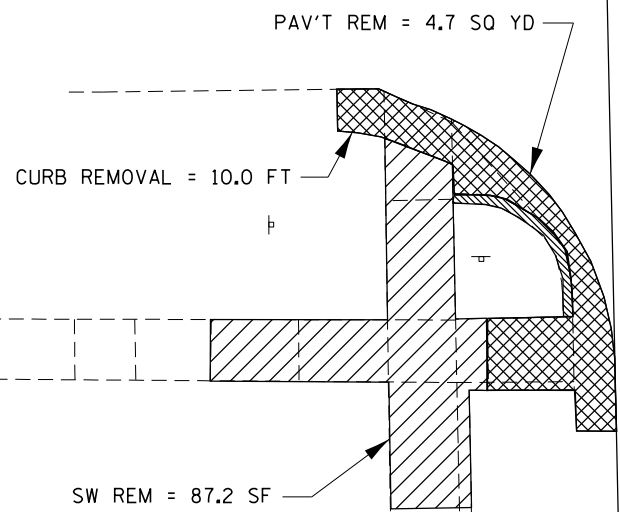
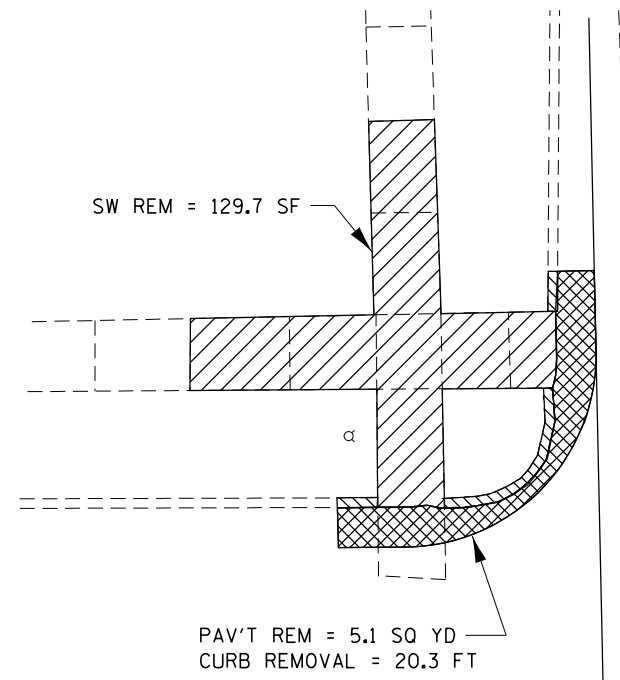
USER NAME = pletschtr	DESIGNED - _____	REVISED - _____
	DRAWN - _____	REVISED - _____
PLOT SCALE = 10.0000' / in.	CHECKED - _____	REVISED - _____
PLOT DATE = 3/17/2020	DATE - _____	REVISED - _____

**STATE OF ILLINOIS  
DEPARTMENT OF TRANSPORTATION**

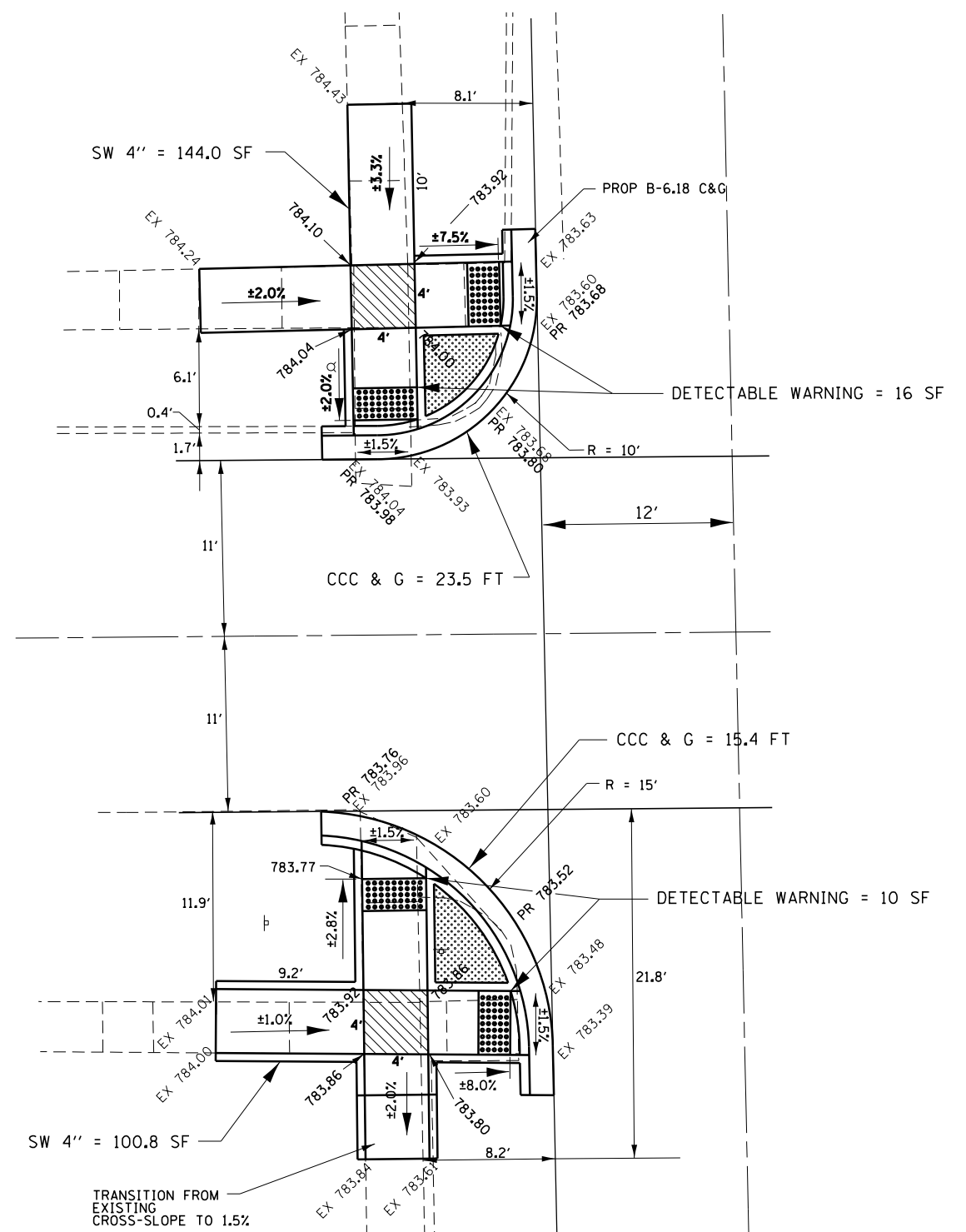
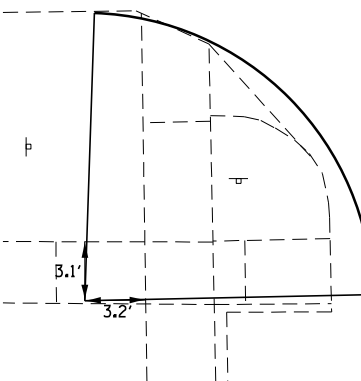
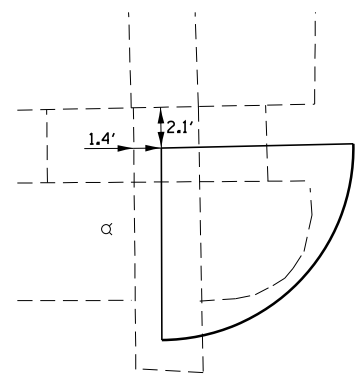
**ADA DETAILS  
A STREET (SW & SE QUADS)**

SCALE: \_\_\_\_\_ SHEET \_\_\_\_\_ OF \_\_\_\_\_ SHEETS STA. \_\_\_\_\_ TO STA. \_\_\_\_\_

F.A.P. RTE.	SECTION	COUNTY	TOTAL SHEETS	SHEET NO.
646	(121,122)RS-5,SW	BUREAU	25	18
CONTRACT NO. 66K28				
ILLINOIS		FED. AID PROJECT		



- CURB AND GUTTER REMOVAL
- SIDEWALK REMOVAL
- PAVEMENT REMOVAL



- DETECTABLE WARNING
- TURNING SPACE / LEVEL LANDING  
1.5% CROSS-SLOPE BOTH DIRECTIONS
- SODDING AREA

NOTE: SEE HIGHWAY STANDARDS 424001 - 424031 FOR MAX SLOPES AND ADDITIONAL REQUIREMENTS

MODEL: Default  
FILE: A:\bldg\_2019\p001\p001\DOT\Documents\DOT\_Offices\Drawings\3\Projects\123662\B\CADD\Drawings\CAD\Sheet\123662\B-RT-ADA\_details.dgn

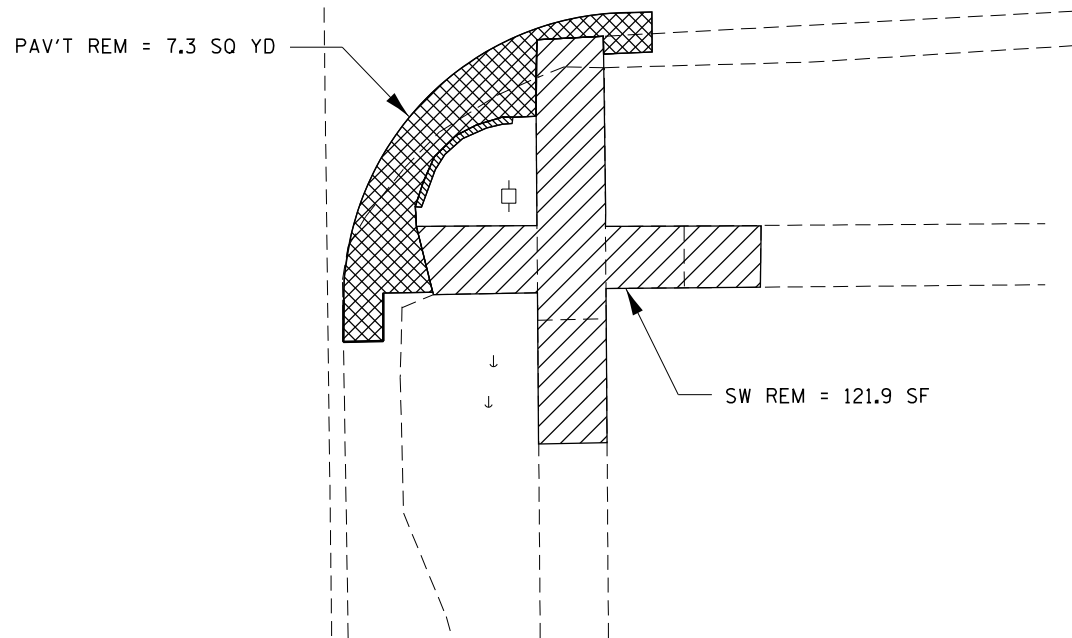
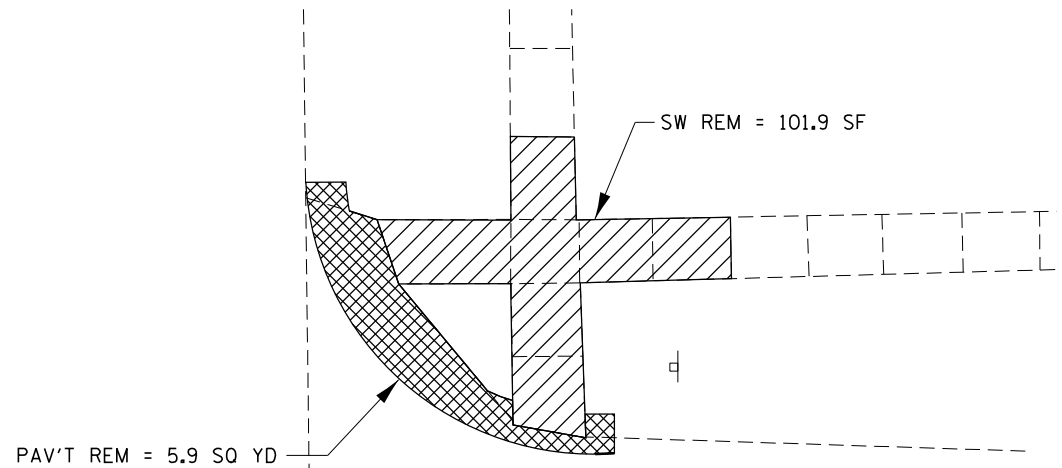
USER NAME = pletschr	DESIGNED - _____	REVISED - _____
DRAWN - _____	REVISOR - _____	REVISOR - _____
PLOT SCALE = 10.0000 "/math>in.</math>	CHECKED - _____	REVISOR - _____
PLOT DATE = 3/17/2020	DATE - _____	REVISOR - _____

**STATE OF ILLINOIS  
DEPARTMENT OF TRANSPORTATION**

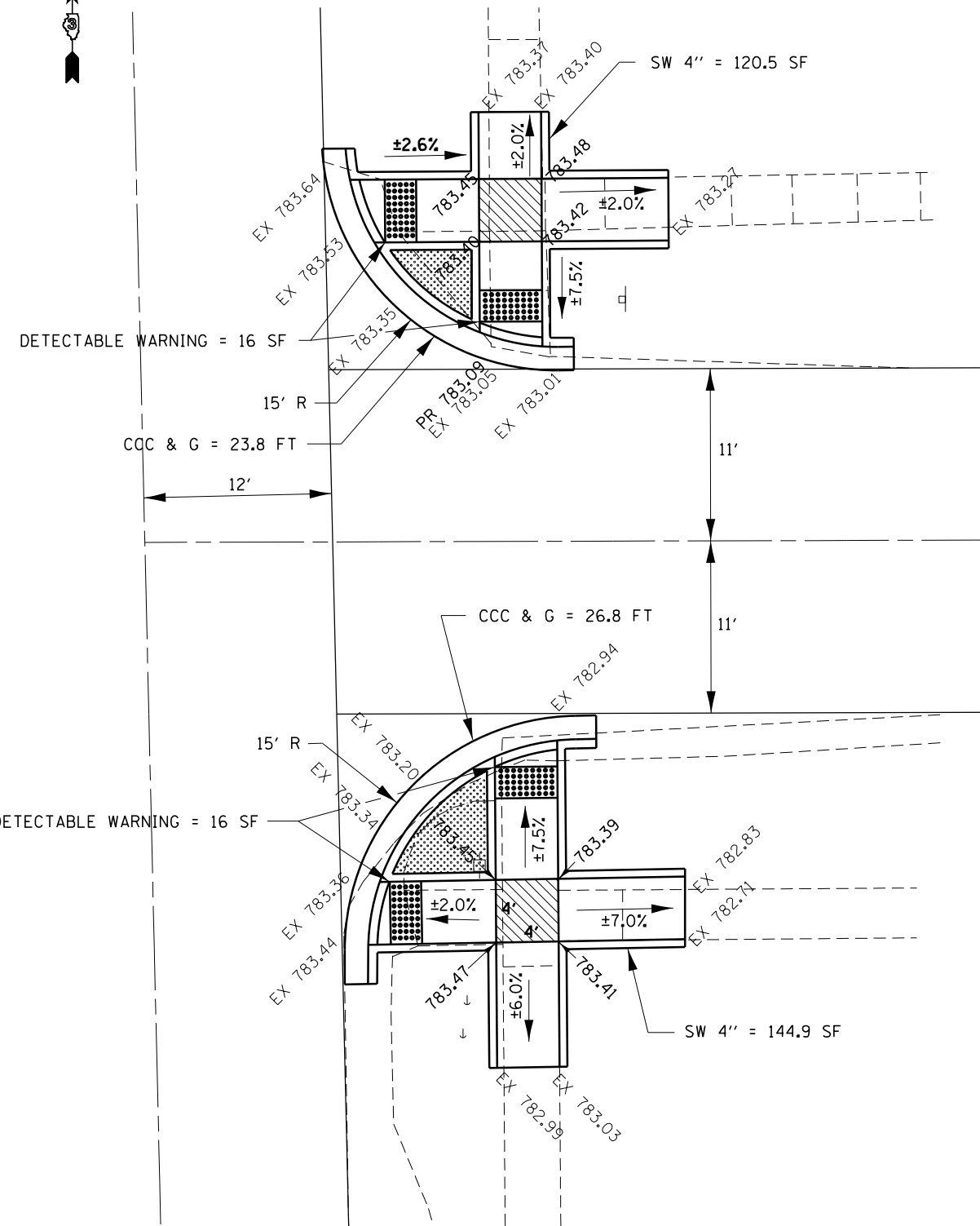
**ADA DETAILS  
B STREET (RT)**

SCALE: \_\_\_\_\_ SHEET \_\_\_\_\_ OF \_\_\_\_\_ SHEETS STA. \_\_\_\_\_ TO STA. \_\_\_\_\_

F.A.P. RTE.	SECTION	COUNTY	TOTAL SHEETS	SHEET NO.
646	(121,122)RS-5,SW	BUREAU	25	19
CONTRACT NO. 66K28				
ILLINOIS FED. AID PROJECT				



- CURB AND GUTTER REMOVAL
- SIDEWALK REMOVAL
- PAVEMENT REMOVAL



- DETECTABLE WARNING
- TURNING SPACE / LEVEL LANDING  
1.5% CROSS-SLOPE BOTH DIRECTIONS
- SODDING AREA

NOTE: SEE HIGHWAY STANDARDS 424001 - 424031 FOR MAX SLOPES AND ADDITIONAL REQUIREMENTS

MODEL: Default  
 FILE: Model: 646\plan\planroom.dwg  
 PROJECT: 646\plan\planroom.dwg  
 PLOT DATE: 3/17/2020

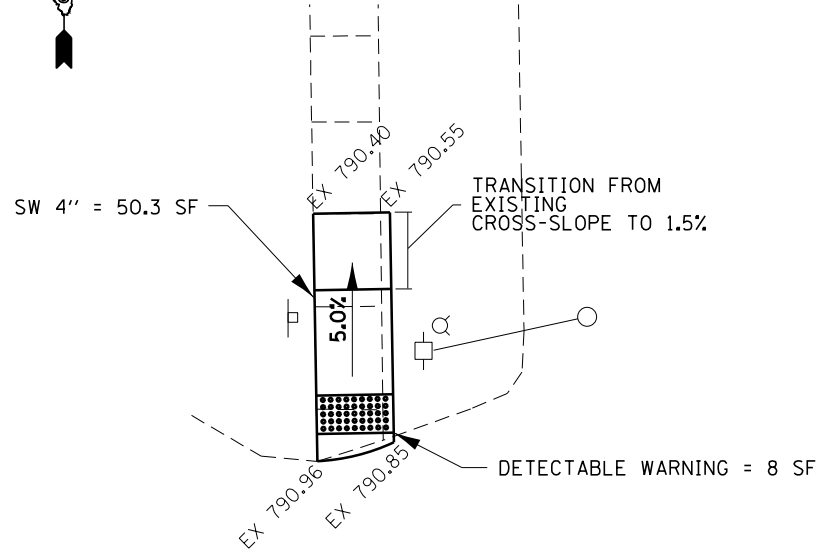
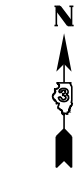
USER NAME = pletschr	DESIGNED - _____	REVISED - _____
PLOT SCALE = 10.0000' / in.	DRAWN - _____	REVISED - _____
PLOT DATE = 3/17/2020	CHECKED - _____	REVISED - _____
	DATE - _____	REVISED - _____

**STATE OF ILLINOIS  
DEPARTMENT OF TRANSPORTATION**

**ADA DETAILS  
B STREET (LT)**

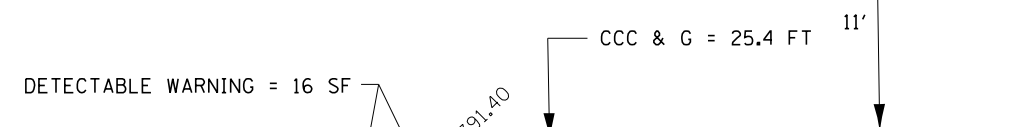
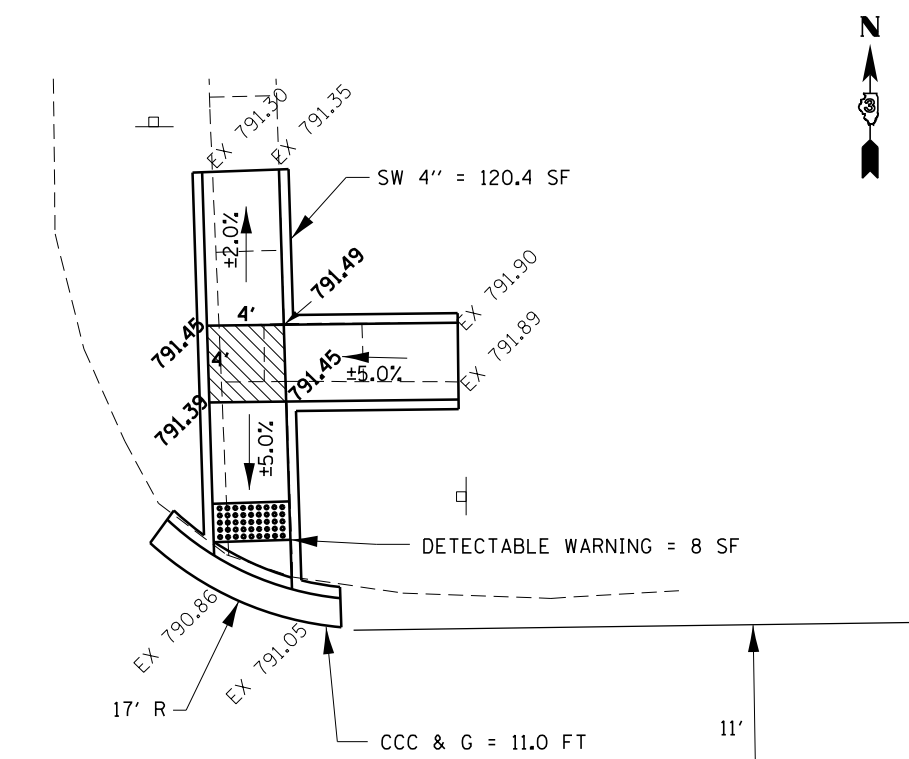
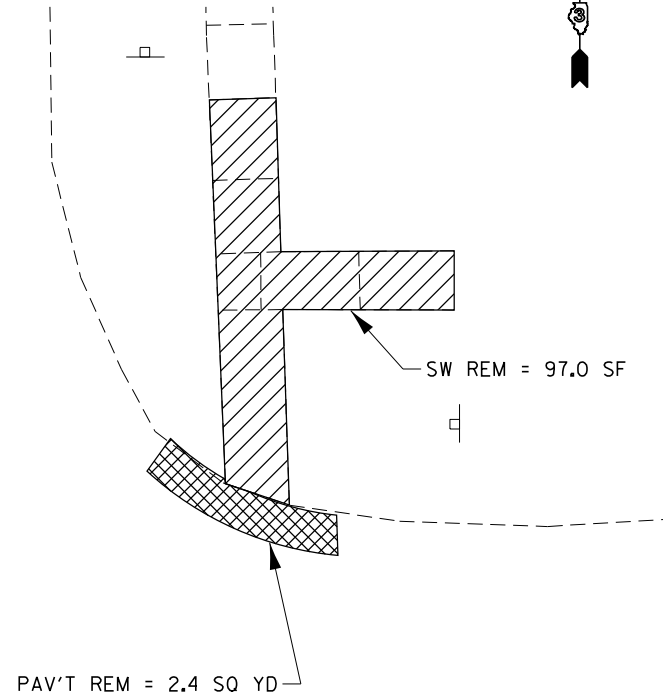
SCALE: \_\_\_\_\_ SHEET \_\_\_\_\_ OF \_\_\_\_\_ SHEETS STA. \_\_\_\_\_ TO STA. \_\_\_\_\_

F.A.P. RTE.	SECTION	COUNTY	TOTAL SHEETS	SHEET NO.
646	(121,122)RS-5,SW	BUREAU	25	20
CONTRACT NO. 66K28				
ILLINOIS FED. AID PROJECT				



- DETECTABLE WARNING
- TURNING SPACE / LEVEL LANDING
- SODDING AREA

NOTE: SEE HIGHWAY STANDARDS 424001 - 424031 FOR MAX SLOPES AND ADDITIONAL REQUIREMENTS



- CURB AND GUTTER REMOVAL
- SIDEWALK REMOVAL
- PAVEMENT REMOVAL

- CURB AND GUTTER REMOVAL
- SIDEWALK REMOVAL
- PAVEMENT REMOVAL

- DETECTABLE WARNING
- TURNING SPACE / LEVEL LANDING 1.5% CROSS-SLOPE BOTH DIRECTIONS
- SODDING AREA

NOTE: SEE HIGHWAY STANDARDS 424001 - 424031 FOR MAX SLOPES AND ADDITIONAL REQUIREMENTS

MODEL: Default  
FILE: Model.dwg  
PROJECT: 3\Projects\1036628\CADD\Drawings\DOT\_Offices\1036628\CADD\Drawings\DOT\_Offices\1036628\1036628-11-ADA\_details.dwg

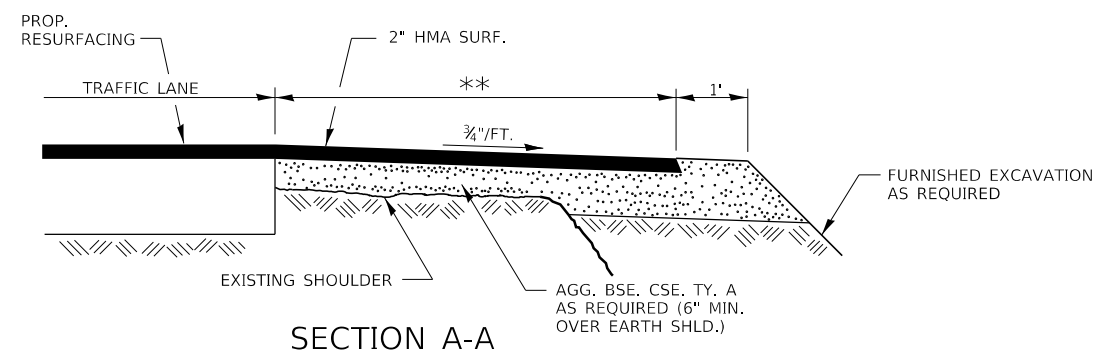
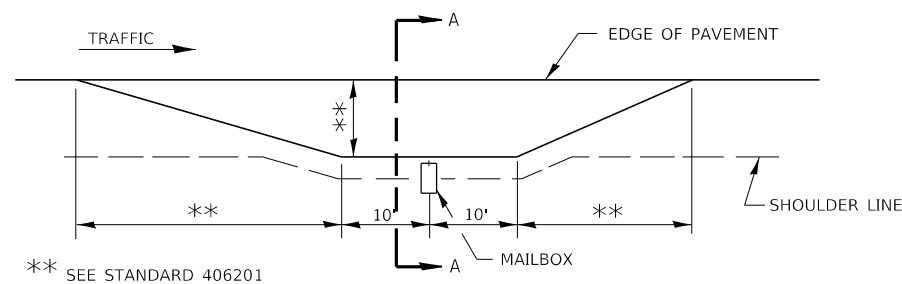
USER NAME = pletschr	DESIGNED - _____	REVISED - _____
DRAWN - _____	REVISIONS - _____	REVISIONS - _____
PLOT SCALE = 10.0000' / in.	CHECKED - _____	REVISIONS - _____
PLOT DATE = 3/17/2020	DATE - _____	REVISIONS - _____

**STATE OF ILLINOIS  
DEPARTMENT OF TRANSPORTATION**

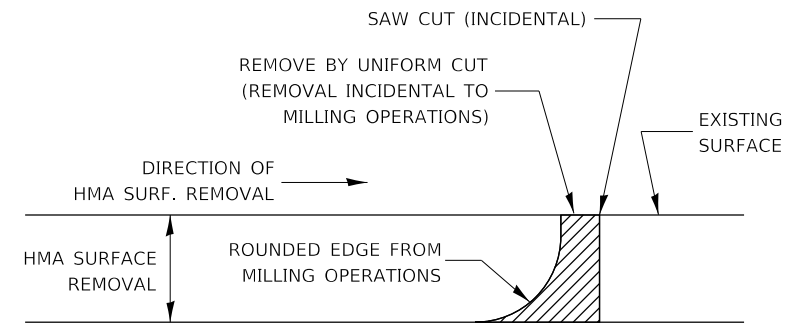
**ADA DETAILS  
HIGH STREET**

SCALE: \_\_\_\_\_ SHEET \_\_\_\_\_ OF \_\_\_\_\_ SHEETS STA. \_\_\_\_\_ TO STA. \_\_\_\_\_

F.A.P. RTE.	SECTION	COUNTY	TOTAL SHEETS	SHEET NO.
646	(121,122)RS-5,SW	BUREAU	25	21
CONTRACT NO. 66K28				
ILLINOIS FED. AID PROJECT				

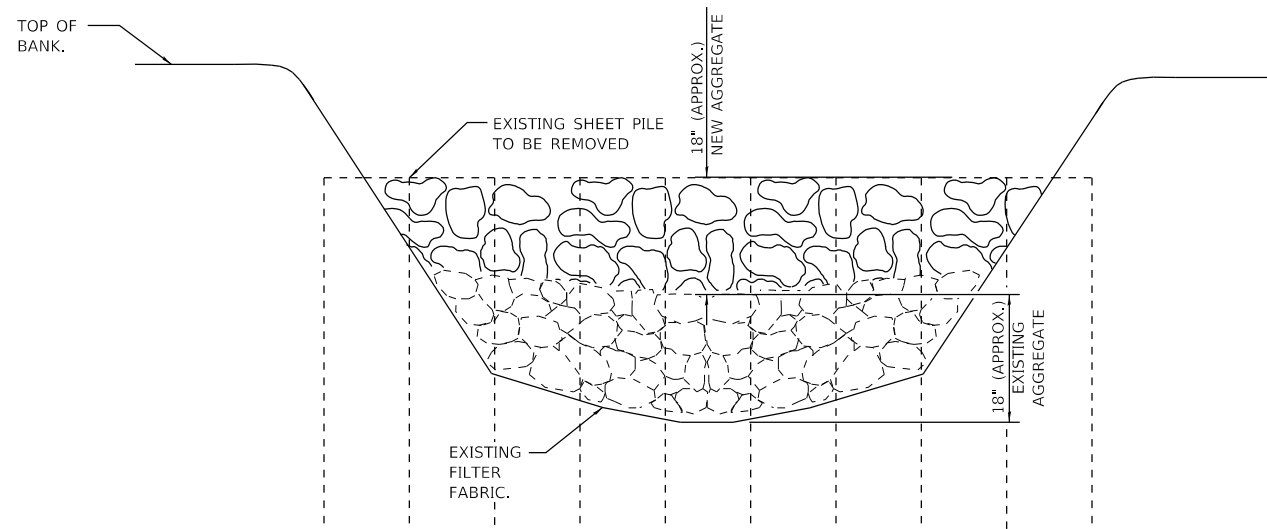


**RURAL MAILBOX TURNOUT DETAILS**

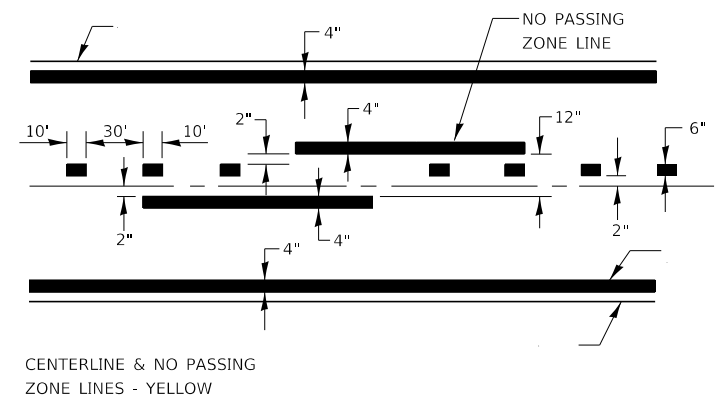


NOTE:  
 WHEN MILLING OPERATIONS PRODUCE A ROUNDED EDGE, THEN A SAW CUT SHALL BE USED TO MANUFACTURE A PERPENDICULAR EDGE AS SHOWN IN THE DETAIL. THE ENGINEER SHALL BE THE SOLE JUDGE CONCERNING THE USE OF THIS DETAIL.

**HMA DETAIL AT BUTT JOINTS**



**AGGREGATE DITCH CHECK DETAIL**



**PAVEMENT MARKING**

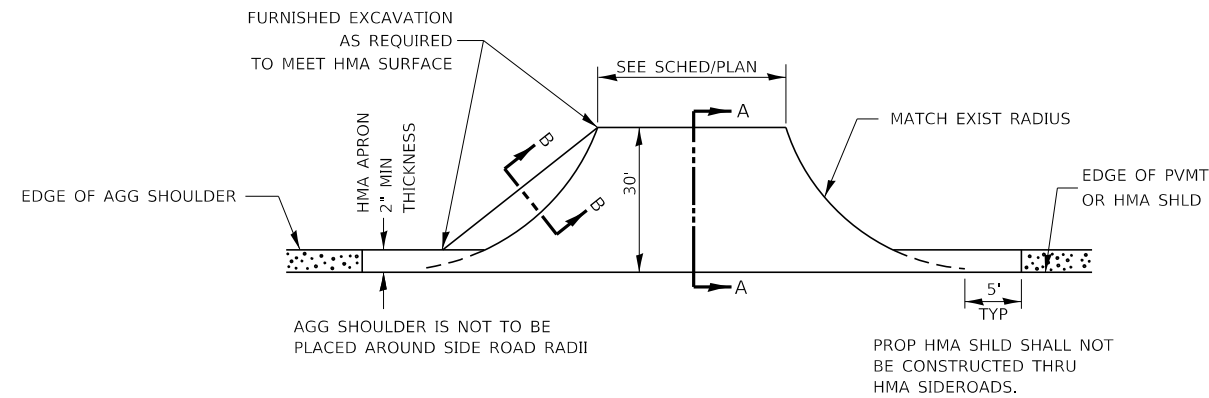
FILE NAME =	USER NAME = pletschr	DESIGNED -	REVISED -
pw:\planroom.dot.illinois.gov\PIDOT\Documents\IDOT Offices\District 3\Projects\0366K28\Drawings\CAD\Drawings\0366K28-sht-Details.dwg		CHECKED -	REVISED -
		DATE -	REVISED -

**STATE OF ILLINOIS  
 DEPARTMENT OF TRANSPORTATION**

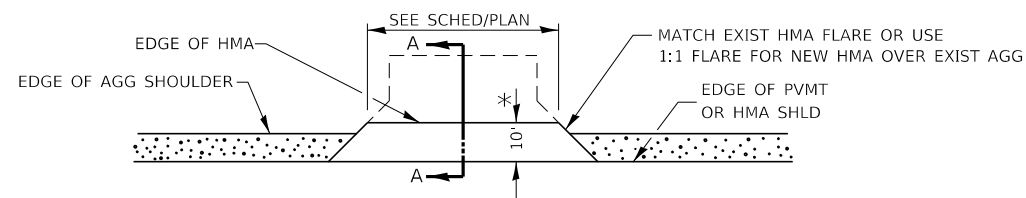
**DETAILS**

SCALE: \_\_\_\_\_ SHEET NO. 1 OF 5 SHEETS STA. \_\_\_\_\_ TO STA. \_\_\_\_\_

F.A.P. RTE.	SECTION	COUNTY	TOTAL SHEETS	SHEET NO.
646	(121,122)RS-5,SW	BUREAU	25	22
CONTRACT NO. 66K28			ILLINOIS FED. AID PROJECT	



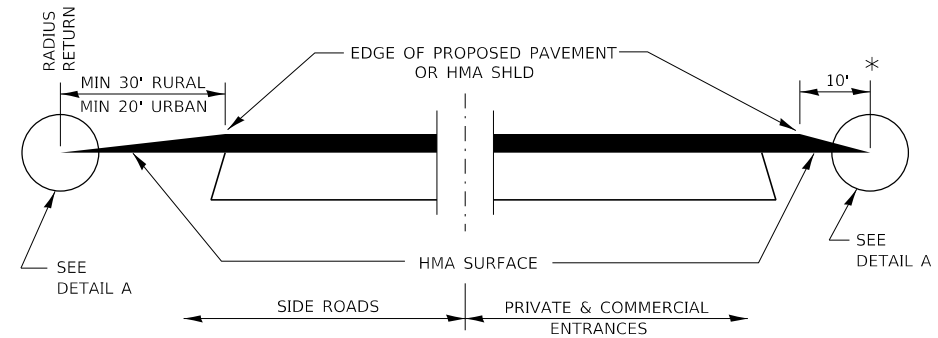
**PLAN AT SIDE ROADS**



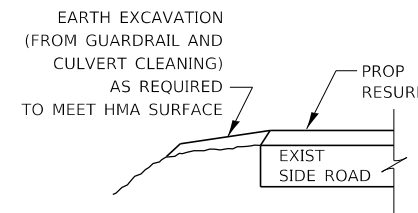
**PLAN AT PRIVATE & COMMERCIAL ENTRANCES**

(DO NOT RESURFACE FIELD ENTRANCES)

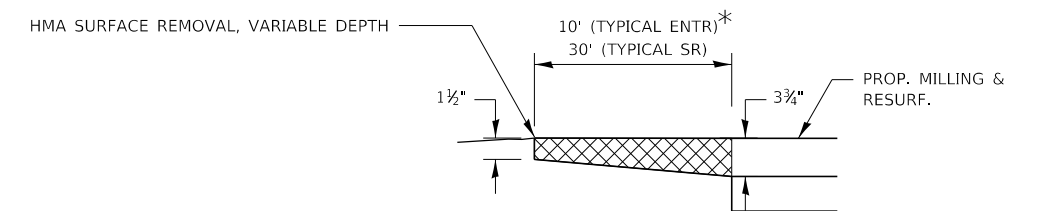
\* PROPOSED HMA RESURFACING AT PUBLIC EDUCATIONAL FACILITY ENTRANCES SHALL BE EXTENDED TO THE RIGHT-OF-WAY LIMITS.



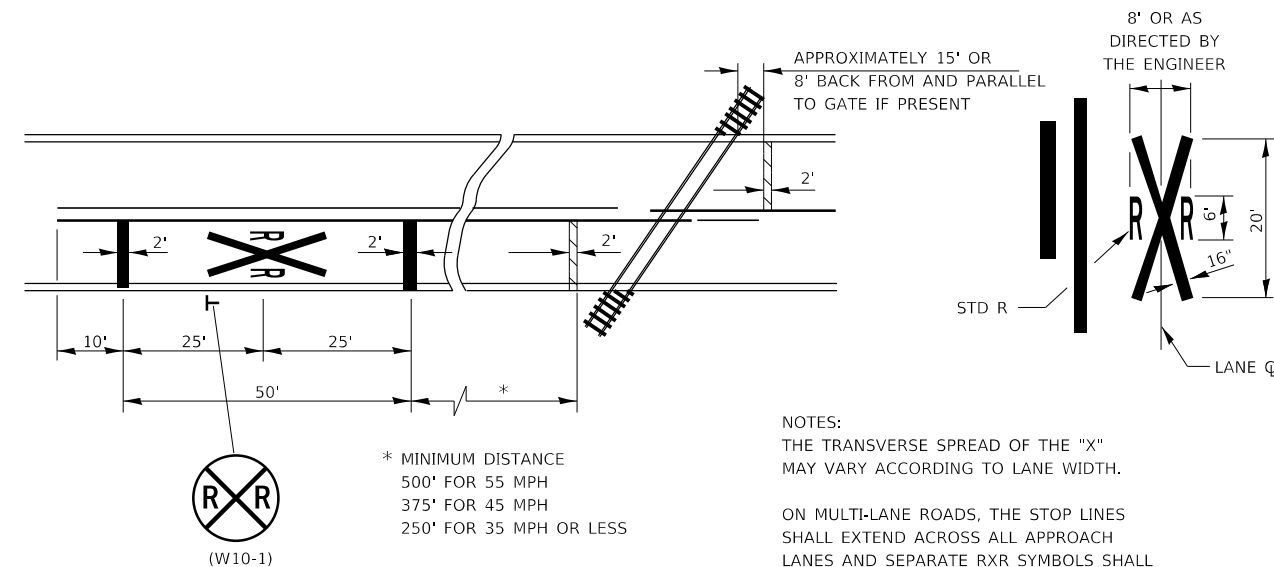
**SECTION A-A  
DETAILS AT ENTRANCES & SIDE ROADS**



**SECTION B-B**



**DETAIL A**



**PAVEMENT MARKINGS AT  
RAILROAD-HIGHWAY GRADE CROSSING**

\* MINIMUM DISTANCE  
500' FOR 55 MPH  
375' FOR 45 MPH  
250' FOR 35 MPH OR LESS

NOTES:  
THE TRANSVERSE SPREAD OF THE "X"  
MAY VARY ACCORDING TO LANE WIDTH.

ON MULTI-LANE ROADS, THE STOP LINES  
SHALL EXTEND ACROSS ALL APPROACH  
LANES AND SEPARATE RXR SYMBOLS SHALL  
BE PLACED ADJACENT TO EACH OTHER  
IN EACH LANE.

WHEN THE PAVEMENT MARKING SYMBOL  
IS USED, A PORTION OF THE SYMBOL  
SHOULD BE LOCATED DIRECTLY ADJACENT  
TO THE ADVANCE WARNING SIGN (W10-1).

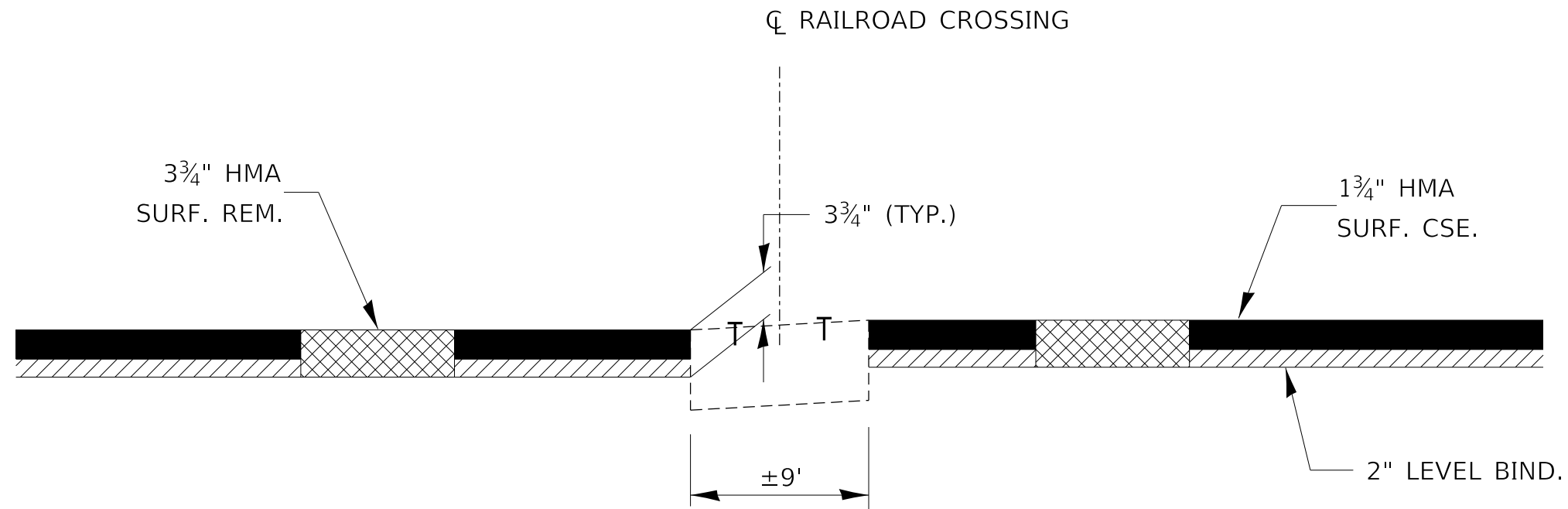
FILE NAME =	USER NAME = pletschr	DESIGNED -	REVISED -
pw:\planroom.dot.illinois.gov\PIDOT\Documents\IDOT Offices\District 3\Projects\0366K28\DRAWING\CABsheets\0366K28-sht-Details		CHECKED -	REVISED -
		DATE -	REVISED -

**STATE OF ILLINOIS  
DEPARTMENT OF TRANSPORTATION**

**DETAILS**

SCALE: \_\_\_\_\_ SHEET NO. 2 OF 5 SHEETS STA. \_\_\_\_\_ TO STA. \_\_\_\_\_

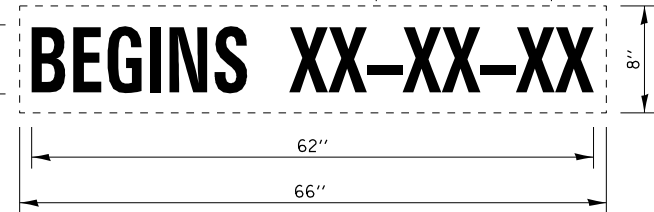
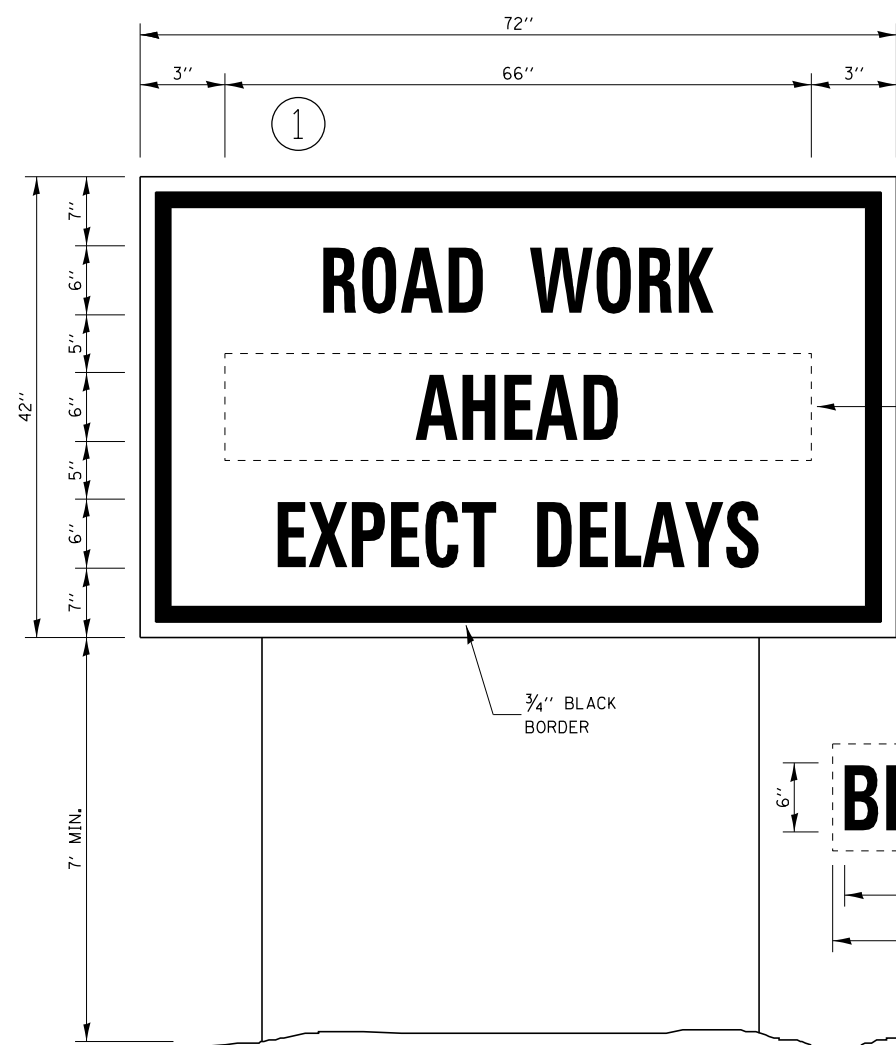
F.A.P. RTE.	SECTION	COUNTY	TOTAL SHEETS	SHEET NO.
646	(121,122)RS-5,SW	BUREAU	25	23
CONTRACT NO. 66K28				
ILLINOIS FED. AID PROJECT				



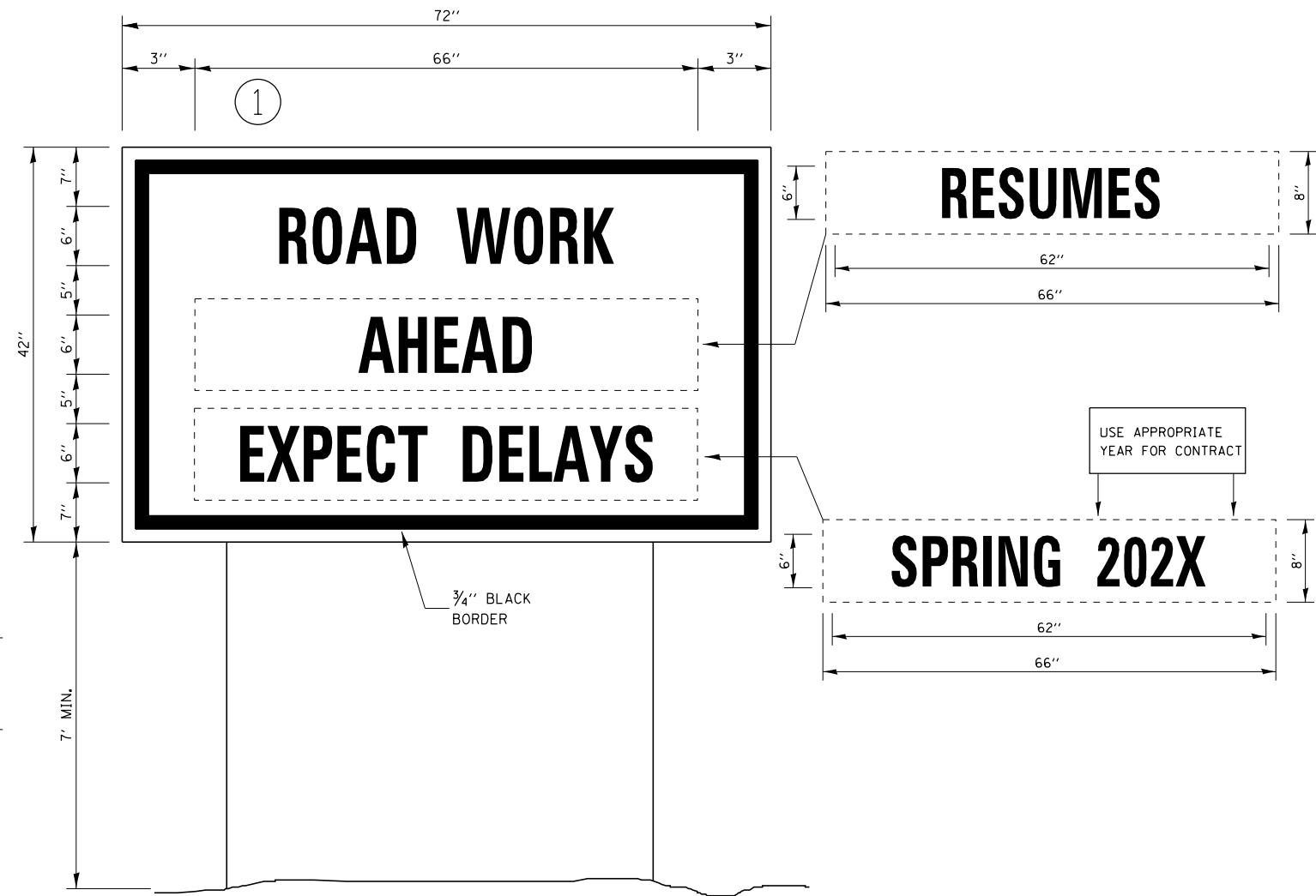
## HMA SURFACE REMOVAL AT THE IL 40 - IOWA INTERSTATE RAILROAD CROSSING

FILE NAME =	USER NAME = pletschr	DESIGNED - _____	REVISED - _____	<b>STATE OF ILLINOIS DEPARTMENT OF TRANSPORTATION</b>	<b>DETAILS</b>	F.A.P. RTE.	SECTION	COUNTY	TOTAL SHEETS	SHEET NO.		
pw:\planroom.dot.illinois.gov\PIDOT\Documents\IDOT Offices\District 3\Projects\0366K28\Drawings\CABsheets\0366K28-sht-Details.dwg						646	(121,122)RS-5,SW	BUREAU	25	24		
PLOT SCALE = 300.0000' / in.						CONTRACT NO. 66K28						
PLOT DATE = 3/17/2020						ILLINOIS FED. AID PROJECT						





**TEMPORARY INFORMATION SIGNING**



**WINTER SHUT DOWN SIGNING**

**NOTES:**

1. USE 6" D BLACK LETTERING ON FLOURESENT ORANGE BACKGROUND.
2. ERECT SIGNS AT LOCATIONS IN ADVANCE OF THE "ROAD CONSTRUCTION AHEAD" SIGNS AS DIRECTED BY THE ENGINEER.
3. ERECT SIGN ① WITH INSTALLED PANEL ② A MINIMUM OF ONE WEEK PRIOR TO THE START OF THE LANE CLOSURE.
4. REMOVE PANEL ② ON THAT DATE.
5. SEE SPECIAL PROVISION "TEMPORARY INFORMATION SIGNING" FOR ADDITIONAL INFORMATION.
6. WILL BE PAID FOR PER SQ FT AS "TEMPORARY INFORMATION SIGNING". EACH SIGN = 21 SQ FT AND THE DATE PANEL ② WILL NOT BE MEASURED SEPARATELY FOR PAYMENT.

FILE NAME =	USER NAME = pletschr	DESIGNED -	REVISED -
pw\planroom.dot.illinois.gov\PIDOT\Documents\IDOT Offices\District 3\Projects\0366K28\DRAWING\CABsheets\0366K28-sht-Details.dwg		DATE -	REVISED -
	PLOT SCALE = 300.0000' / in.	CHECKED -	REVISED -
	PLOT DATE = 3/17/2020	DATE -	REVISED -

**STATE OF ILLINOIS  
DEPARTMENT OF TRANSPORTATION**

**DETAILS**

SCALE: \_\_\_\_\_ SHEET NO. 5 OF 5 SHEETS STA. \_\_\_\_\_ TO STA. \_\_\_\_\_

F.A.P. RTE.	SECTION	COUNTY	TOTAL SHEETS	SHEET NO.
646	(121,122)RS-5,SW	BUREAU	25	25
CONTRACT NO. 66K28			ILLINOIS FED. AID PROJECT	