

STATE OF ILLINOIS  
DEPARTMENT OF TRANSPORTATION

F.A. RYE.	SECTION	COUNTY	TOTAL SHEETS	SHEET NO.
VAR	D4 REFLECTOR REPL 20-34	VARIOUS	3	1
		ILLINOIS	CONTRACT NO. 46546	

INDEX OF SHEETS

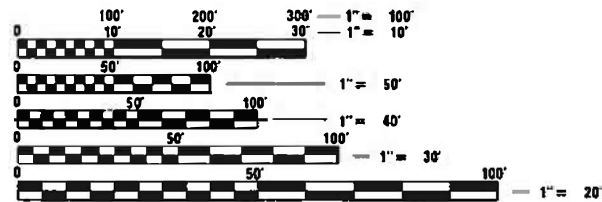
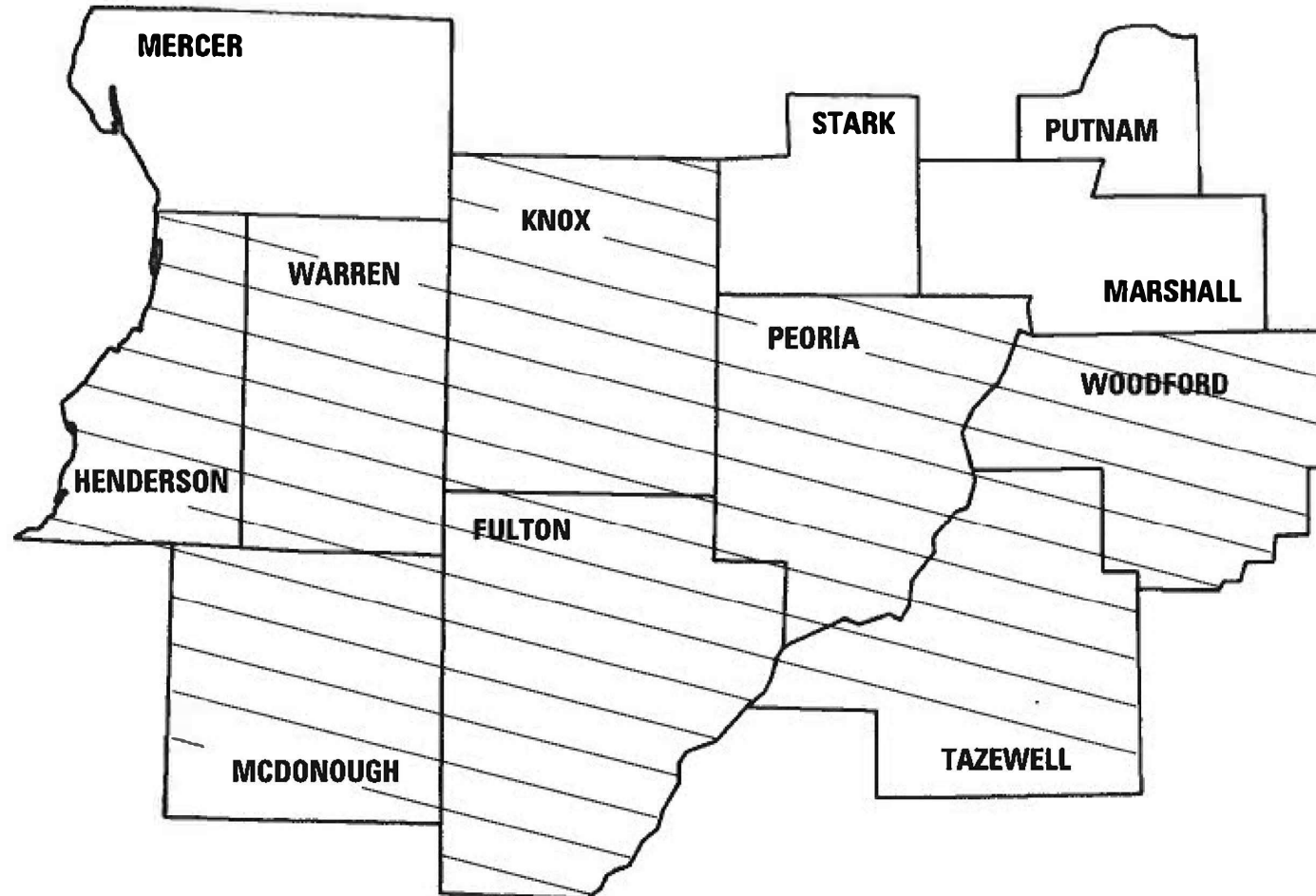
1. COVER SHEET
2. SUMMARY OF QUANTITIES
3. MARKER REPLACEMENT LOCATIONS

HIGHWAY STANDARDS

- 701301-04
- 701306-04
- 701311-03
- 701406-12
- 701426-09
- 701427-05
- 701602-10
- 701901-08
- 781001-04

PROPOSED  
HIGHWAY PLANS

VARIOUS ROUTE  
D4 REFLECTOR REPL 20-34  
RAISED REFLECTOR REPLACEMENT  
VARIOUS COUNTY  
M-60-032-20



FULL SIZE PLANS HAVE BEEN PREPARED USING STANDARD ENGINEERING SCALES. REDUCED SIZED PLANS WILL NOT CONFORM TO STANDARD SCALES. IN MAKING MEASUREMENTS ON REDUCED PLANS THE ABOVE SCALES MAY BE USED.

J.U.L.I.E.  
JOINT UTILITY LOCATION INFORMATION FOR EXCAVATORS  
1-800-892-0123  
OR 811

STATE OF ILLINOIS  
DEPARTMENT OF TRANSPORTATION

SUBMITTED February 27, 2020  
*[Signature]*  
REGIONAL ENGINEER

May 8, 2020  
*[Signature]*  
ENGINEER OF DESIGN AND ENVIRONMENT

May 8, 2020  
*[Signature]*  
DIRECTOR OF HIGHWAYS PROJECT IMPLEMENTATION 13

PRINTED BY THE AUTHORITY  
OF THE STATE OF ILLINOIS

## SUMMARY OF QUANTITIES

0021

Code Number	Item	Unit	100% State Rural Total Quantity
78100100	RAISED REFLECTIVE PAVEMENT MARKER	EACH	15,499
78300200	RAISED REFLECTIVE PAVEMENT MARKER REMOVAL	EACH	15,499

MODEL: Default  
 FILE NAME: p:\pjancom.dct\illinois.gov\PWDOT\Documents\DOT\_Offices\District\_4\Projects\Traffic\pavement marking and\_rpm.dgn

USER NAME = ghidinaam	DESIGNED -	REVISED -
	DRAWN -	REVISED -
PLOT SCALE = 40.0000' / in.	CHECKED -	REVISED -
PLOT DATE = 2/25/2020	DATE -	REVISED -

**STATE OF ILLINOIS  
DEPARTMENT OF TRANSPORTATION**

**SUMMARY OF QUANTITIES**

SCALE:      SHEET      OF      SHEETS      STA.      TO STA.

F.A. RTE.	SECTION	COUNTY	TOTAL SHEETS	SHEET NO.
VAR	D4 REFLECTOR REPL 20-34	VARIOUS	3	2
			CONTRACT NO. 46546	
ILLINOIS   FED. AID PROJECT				

COUNTY	ROUTE	LOCATION	BEG MP	END MP	CRYSTAL 1 WAY	AMBER 1 WAY	AMBER 2 WAY	SURFACE TYPE	
Fulton	IL 9	McDonough co. line to the east Jct.	0.000	14.007	0	0	928	Asphalt	
Fulton	IL 116	Knox Co. line to west of Farmington	0.000	15.520	30	40	1,024	Asphalt	
Henderson	IL 94	Just north of Stronghurst to Biggsville	11.560	20.700	10	30	603	Asphalt	
Henderson	IL 116	Jct. of IL 94 to the Warren Co. line	5.640	14.160	0	0	562	Asphalt	
Knox	US 34	East of West Main to West of US 150	2.790	4.900	279	0	0	Asphalt	
Knox	US 34	Pvt. Jnt. West of I-74 to Henry Co.	7.420	23.390	250	30	1,054	Asphalt	
Knox	IL 41	Fulton Co. line to the north edge of Abingdon	0.000	6.880	20	20	726	Asphalt	
Knox	IL 116	Warren Co. line to Fulton Co. line	0.000	8.500	20	20	561	Asphalt	
McDonough	IL 9	North City limits of Bushnell to Fulton Co.	22.210	26.350	0	0	273	Asphalt	
Tazewell	IL 26	IL 116 Jct. to Woodford Co. Line	0.000	1.200	8	0	79	Asphalt	
Tazewell	IL 29	Mason Co. line to north of Thornton St.	0.000	16.190	41	0	1,316	Asphalt	
Tazewell	I-155	Logan Co. line to Toboggon Rd. overpass	11.200	17.270	1,073	0	0	Asphalt	
Tazewell	IL 9	IL 9/IL 29 Jct. to Court Street in Pekin	3.070	7.140	593	0	1,054	Concrete	
Warren	IL 116	Henderson Co. line to the Knox Co. line	0.000	18.100	0	20	1,195	Asphalt	
Woodford	US 24	Myers St. in Eureka to McLean Co.	3.170	18.390	47	0	1,125	Asphalt	
Woodford	IL 26	Tazewell Co. line to the Marshall Co. line	0.000	14.600	0	0	964	Asphalt	
Woodford	IL 89	IL 116 Jct. in Metamora to Marshall Co.	0.000	10.330	0	0	690	Asphalt	
Woodford	IL 116	Partridge St. in Metamora to the west of Roanoke	9.150	15.910	0	0	446	Asphalt	
Woodford	IL 116	West of Roanoke to the north Jct. 116/117	15.910	21.810	0	0	368	Asphalt	
					TOTAL		2,371	160	12,968
					GRAND TOTAL		15,499		

MODEL: Default  
 FILE: h:\mtrc\pub\pubroom\data\illinois\pww\DOT\Documents\DOT\_Offices\Traffic\government marking and rmon.dgn

USER NAME = ghidinaam	DESIGNED -	REVISED -
	DRAWN -	REVISED -
PLOT SCALE = 40,0000 ' / in.	CHECKED -	REVISED -
PLOT DATE = 2/25/2020	DATE -	REVISED -

**STATE OF ILLINOIS  
DEPARTMENT OF TRANSPORTATION**

**MARKER REPLACEMENT LOCATIONS**

SCALE: SHEET OF SHEETS STA. TO STA.

F.A. RTE.	SECTION	COUNTY	TOTAL SHEETS	SHEET NO.
VAR	D4 REFLECTOR REPL 20-34	VARIOUS	3	3
			CONTRACT NO. 46546	
		ILLINOIS	FED. AID PROJECT	