

STATE OF ILLINOIS
DEPARTMENT OF TRANSPORTATION

F.A.P. RTE.	SECTION	COUNTY	TOTAL SHEETS	SHEET NO.
303	2019-094-RS-SW&SR	LAKE	30	1
		ILLINOIS	CONTRACT NO. 62J92	

D-91-270-20



PROPOSED HIGHWAY PLANS

F.A.P ROUTE 303 IL 173
IL 131 (GREEN BAY RD.) TO IL 137 (SHERIDAN RD.)
SECTION 2019-094-RS-SW&SR
PROJECT: NHPP-MJIN (572)
DESIGNED OVERLAY NEW SHOULDERS AND
PEDESTRIAN ADA IMPROVEMENTS
LAKE COUNTY

C-91-051-20

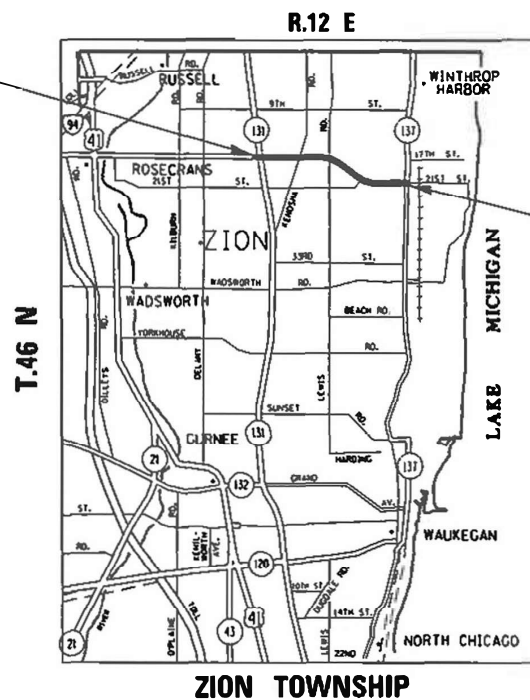
FOR INDEX OF SHEETS, SEE SHEET NO. 2

THE PROJECT IS LOCATED WITHIN
THE CITY OF ZION

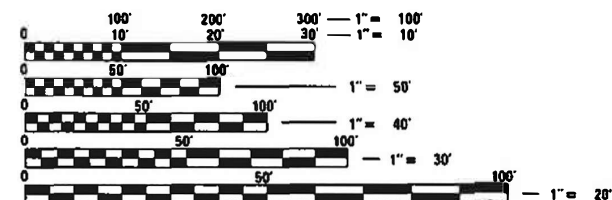
TRAFFIC DATA:

ADT = 8,600 TO 12,700 (2019)
SPEED LIMIT = 45 MPH.

PROJECT BEGINS
STA. 13 + 92



PROJECT ENDS
STA. 177 + 66



FULL SIZE PLANS HAVE BEEN PREPARED USING STANDARD
ENGINEERING SCALES. REDUCED SIZED PLANS WILL NOT
CONFORM TO STANDARD SCALES. IN MAKING MEASUREMENTS
ON REDUCED PLANS, THE ABOVE SCALES MAY BE USED.

J.U.L.I.E.
JOINT UTILITY LOCATION INFORMATION FOR EXCAVATORS
1-800-892-0123
OR 811

PROJECT ENGINEER: DAN WILGREEN (847)-705-4240
PROJECT MANAGER: FAWAD AQUEEL (847)-705-4247

GROSS LENGTH = 16,374 FT. = 3.10 MILE
NET LENGTH = 16,374 FT. = 3.10 MILE

CONTRACT NO. 62J92

STATE OF ILLINOIS
DEPARTMENT OF TRANSPORTATION

SUBMITTED MARCH 13, 2020
Anthony J. Pringle REGIONAL ENGINEER
May 8, 2020
Scott A. Etk
ENGINEER OF DESIGN AND ENVIRONMENT
May 8, 2020
James J. Gu
DIRECTOR OF HIGHWAYS PROJECT IMPLEMENTATION

PRINTED BY THE AUTHORITY
OF THE STATE OF ILLINOIS

INDEX OF SHEETS

SHEET NO.	DESCRIPTION
1	COVER SHEET
2	INDEX OF SHEETS, LIST OF STATE STANDARDS AND GENERAL NOTES
3-5	SUMMARY OF QUANTITIES
6-7	TYPICAL SECTIONS
8-13	ROADWAY AND PAVEMENT MARKING PLAN
14-17	DETECTOR LOOP REPLACEMENT PLAN
18-20	DISTRICT ONE ADA DETAILS
21	DETAILS FOR FRAMES AND LIDS ADJUSTMENT WITH MILLING (BD-08)
22	PAVEMENT PATCHING FOR HMA SURFACE PAVEMENT (BD-22)
23	BUTT JOINT AND HMA TAPER DETAILS (BD-32)
24	TRAFFIC CONTROL AND PROTECTION FOR SIDE ROADS, INTERSECTIONS, AND DRIVEWAYS (TC-10)
25	TYPICAL APPLICATION RAISED REFLECTIVE PAVEMENT MARKERS (TC-11)
26	DISTRICT ONE TYPICAL PAVEMENT MARKINGS (TC-13)
27	TRAFFIC CONTROL AND PROTECTION AT TURN BAYS (TO REMAIN OPEN TO TRAFFIC) (TC-14)
28	SHORT TERM PAVEMENT MARKING LETTERS AND SYMBOLS (TC-16)
29	ARTERIAL ROAD INFORMATION SIGN (TC-22)
30	DISTRICT ONE- DETECTOR LOOP INSTALLATION DETAILS FOR ROADWAY RESURFACING

STATE STANDARDS

STANDARD NO.	DESCRIPTION
000001-07	STANDARD SYMBOLS, ABBREVIATIONS AND PATTERNS
442201-03	CLASS C & D PATCHES
630001-12	STEEL PLATE BEAM GUARDRAIL
701006-05	OFF-RD OPERATIONS, 2L, 2W, 15' TO 24' FROM PAVEMENT EDGE
701011-04	OFF-DR MOVING OPERATIONS, 2L, 2W, DAY ONLY
701101-05	OFF- RD OPERATIONS, MULTILANE 15' TO 24' FROM PAVEMENT EDGE
701301-04	LANE CLOSURE, 2L, 2W, SHORT-TIME OPERATIONS
701306-04	LANE CLOSURE, 2L, 2W, SLOW MOVING OPERATIONS DAY ONLY, FOR SPEEDS >= 45 MPH
701311-03	LANE CLOSURE, 2L, 2W, MOVING OPERATIONS - DAY ONLY
701336-07	LANE CLOSURE, 2L, 2W WORK AREAS IN SERIES, FOR SPEEDS >= 45 MPH
701426-09	LANE CLOSURE, MULTILANE, INTERMITTENT OR MOVING OPERATION FOR SPEED >= 45 MPH
701427-05	LANE CLOSURE, MULTILANE, INTERMITTENT OR MOVING OPERATION FOR SPEED <= 40 MPH
701501-06	URBAN LANE CLOSURE, 2L, 2W UNDIVIDED
701502-09	URBAN LANE CLOSURE, 2L, 2W, WITH BIDIRECTIONAL LEFT TURN LANE
701701-10	URBAN LANE CLOSURE, MULTILANE INTERSECTION
701801-06	SIDEWALK, CORNER OR CROSSWALK CLOSURE
701901-08	TRAFFIC CONTROL DEVICES
780001-05	TYPICAL PAVEMENT MARKINGS
781001-04	TYPICAL APPLICATION RAISED REFLECTIVE PAVEMENT MARKERS

GENERAL NOTES

- BEFORE STARTING ANY EXCAVATION, THE CONTRACTOR SHALL CALL "JULIE" AT 8-1-1 OR (800) 892-0123 FOR FIELD LOCATION OF BURIED ELECTRIC, TELEPHONE, AND GAS FACILITIES (48 HOUR NOTIFICATION IS REQUIRED).
- THE CONTRACTOR SHALL COORDINATE CONSTRUCTION ACTIVITIES WITH UTILITY COMPANIES, AND THE CITY OF ZION
- THE CONTRACTOR SHALL CONTACT THE DISTRICT ONE TRAFFIC CONTROL SUPERVISOR AT KALPANA.KANNAN-HOSADURGA@ILLINOIS.GOV A MINIMUM OF 72 HOURS IN ADVANCE OF BEGINNING WORK.
- THE CONTRACTOR WILL NOT BE ALLOWED TO SET UP A YARD OR FIELD OFFICE ON STATE PROPERTY WITHOUT WRITTEN PERMISSION FROM THE DEPARTMENT.
- BEFORE BEGINNING ANY WORK, THE CONTRACTOR SHALL RETAIN AND RECORD FOR FUTURE REFERENCE, ALL EXISTING PAVEMENT MARKING LINES (AND RAISED REFLECTIVE PAVEMENT MARKERS) IN ORDER THAT THESE LOCATIONS CAN BE RE-ESTABLISHED FOR STRIPING. EXACT LOCATIONS OF ALL PAVEMENT MARKINGS SHALL BE AS DIRECTED BY THE ENGINEER.
- ALL DAMAGE TO EXISTING PAVEMENT MARKINGS OR RAISED REFLECTIVE PAVEMENT MARKERS OUTSIDE THE REMOVAL LINE SHOWN ON THE PLANS SHALL BE REPLACED AT NO ADDITIONAL COST TO THE DEPARTMENT.
- THE REMOVAL OF GUARDRAIL TERMINAL SECTIONS SHALL BE INCLUDED IN THE UNIT PRICE PER FOOT FOR " GUARDRAIL REMOVAL."
- LOCATION OF COMBINATION CONCRETE CURB AND GUTTER REMOVAL AND REPLACEMENT (OR COMBINATION CURB AND GUTTER (THE TYPE SPECIFIED ON THE PLANS)), WILL BE DETERMINED IN THE FIELD BY THE ENGINEER.
- ALL PAVEMENT PATCHING LOCATIONS WILL BE DETERMINED IN THE FIELD BY THE ENGINEER
- IT SHALL BE THE CONTRACTOR'S RESPONSIBILITY TO VERIFY ALL DIMENSIONS AND CONDITIONS EXISTING IN THE FIELD PRIOR TO CONSTRUCTION AND ORDERING OF MATERIALS.
- DRAINAGE ADJUSTMENT OR RECONSTRUCTION LOCATIONS WILL BE DETERMINED IN THE FIELD BY THE ENGINEER.
- EXISTING BROKEN FRAMES AND LIDS SHALL BE REMOVED AND DISPOSED OF BY THE CONTRACTOR AND SHALL BE REPLACED AS DIRECTED BY THE ENGINEER. REPLACEMENT FRAMES AND LIDS WILL BE PAID FOR ACCORDING TO ARTICLE 109.04 OF THE STANDARD SPECIFICATIONS UNLESS A SEPARATE PAY ITEM HAS BEEN PROVIDED.
- FRAMES AND GRATES ADJUSTMENT OF PRIVATE UTILITIES WITHIN THE LIMITS OF THE IMPROVEMENTS SHALL BE DONE BY THEIR RESPECTIVE OWNERS AND ARE NOT PART OF THIS CONTRACT.
- SIDEWALK REMOVAL AND P.C.C. SIDEWALK 5" LOCATIONS SHALL BE DETERMINED BY THE ENGINEER.
- THE RESIDENT ENGINEER SHALL CONTACT WALTER CZARNY, AREA TRAFFIC FIELD ENGINEER VIA EMAIL AT WALTER.CZARNY@ILLINOIS.GOV, A MINIMUM OF TWO (2) WEEKS PRIOR TO THE PLACEMENT OF PERMANENT PAVEMENT MARKINGS.
- BUTT JOINTS WILL BE INSTALLED AT THE ENDS OF ALL RESURFACING (WHERE RESURFACING MEETS EXISTING PAVEMENT) ACCORDING TO THE "BUTT JOINT AND HOT-MIX ASPHALT TAPER DETAILS " SHEET INCLUDED IN THE PLANS, UNLESS OTHERWISE SPECIFIED.
- DO NOT SCALE PLANS FOR CONSTRUCTION DIMENSIONS.
- PAVEMENT MARKING TAPE, TYPE III SHALL BE USED FOR SHORT TERM PAVEMENT MARKINGS ON ALL FINAL SURFACES.
- ANY PAVEMENT MARKINGS AND RAISED REFLECTIVE PAVEMENT MARKERS OBLITERATED BY MILLING AND RESURFACING OPERATIONS ON SIDE STREETS AND ENTRANCES SHALL BE REPLACED AND PAID FOR IN KIND
- UNLESS OTHER CONDITIONS WARRANT EXTENDED LANE CLOSURES AS DETERMINED AND APPROVED IN WRITING BY THE ENGINEER OR AS PROVIDED FOR IN WRITING BY THE ENGINEER OR AS PROVIDED FOR IN THE CONTRACT SPECIFICATIONS, OVERNIGHT CLOSURES SHALL NOT BE ALLOWED FOR REHABILITATION PROJECTS INVOLVING DAYTIME MILLING AND RESURFACING OPERATIONS AND CLASS D PATCHING.
- WHEN MILLED PAVEMENT IS OPEN TO TRAFFIC, THE MAXIMUM GRADE DIFFERENTIAL, BETWEEN PASSES OF THE MILLING MACHING SHALL NOT EXCEED 1.5 INCHES WHERE THE SPEED LIMIT IS 40 MPH OR LESS. WITH WRITTEN APPROVAL FROM THE ENGINEER, A MAXIMUM GRAD DIFFERENTIAL OF 3 INCHES MAY BE ALLOWED IF THE EDGE OF MILLING IS SLOPED A MINIMUM OF 1:3 (V:H)
- DURING CONSTRUCTION OPERATIONS, WHEN ANY LOOSE MATERIAL IS DEPOSITED IN THE FLOW LINE OF DITCHES, GUTTERS, OR DRAINAGE STRUCTURES TO THAT THE NATURAL FLOW OF WATER IS OBSTRUCTED, THE MATERIAL SHALL BE REMOVED AT THE CLOSE OF EACH WORKING DAY. THIS WORK IS CONSIDERED AS PART OF CLEAN- UP
- GRADING AND TOTAL EXCAVATION FOR PROPOSED DRAINAGE IMPROVEMENT AREA FROM STA 120+37 TO STA 121+61 WILL BE DETERMINED BY THE RESIDENT ENGINEER

STATE OF ILLINOIS
DEPARTMENT OF TRANSPORTATION

FAP 303 IL 173 FROM IL 131 (GREEN BAY RD) TO IL 137 (SHERIDAN RD)
INDEX OF SHEETS, STATE STANDARDS & GENERAL NOTES

SCALE: SHEET OF SHEETS STA. TO STA.

F.A.P RTE.	SECTION	COUNTY	TOTAL SHEETS	SHEET NO.
303	2019-094-R5-SW&SR	LAKE	30	2
			CONTRACT NO. 62J92	
		ILLINOIS	FED. AID PROJECT	

REV-SEP

SUMMARY OF QUANTITIES			TOTAL QUANTITIES	CONSTRUCTION TYPE CODE				
CODE NO	ITEM	UNIT		80% FEDERAL 20% STATE URBAN 0005				
20200100	EARTH EXCAVATION	CU YD	110	110				
20201200	REMOVAL AND DISPOSAL OF UNSUITABLE MATERIAL	CU YD	880	880				
21101615	TOPSOIL FURNISH AND PLACE, 4"	SO YD	150	150				
25200110	SODDING, SALT TOLERANT	SO YD	150	150				
40600290	BITUMINOUS MATERIALS (TACK COAT)	POUND	52118	52118				
40600400	MIXTURE FOR CRACKS, JOINTS, AND FLANGEWAYS	TON	116	116				
40600982	HOT-MIX ASPHALT SURFACE REMOVAL - BUTT JOINT	SO YD	926	926				
40601005	HOT-MIX ASPHALT REPLACEMENT OVER PATCHES	TON	217	217				
40602985	HOT-MIX ASPHALT BINDER COURSE, IL-9.5, N70	TON	8660	8660				
40604062	HOT-MIX ASPHALT SURFACE COURSE, IL-9.5, MIX "D", N70	TON	7567	7567				
42400200	PORTLAND CEMENT CONCRETE SIDEWALK 5 INCH	SO FT	1950	1950				
42400800	DETECTABLE WARNINGS	SO FT	540	540				
	* - SPECIALTY ITEMS							

SUMMARY OF QUANTITIES			TOTAL QUANTITIES	CONSTRUCTION TYPE CODE				
CODE NO	ITEM	UNIT		80% FEDERAL 20% STATE URBAN 0005				
44000164	HOT-MIX ASPHALT SURFACE REMOVAL, 3/4"	SO YD	77211	77211				
44000600	SIDEWALK REMOVAL	SO FT	1950	1950				
44002220	HOT-MIX ASPHALT REMOVAL OVER PATCHES, 5"	SO YD	3948	3948				
44004250	PAVED SHOULDER REMOVAL	SO YD	40	40				
44201753	CLASS D PATCHES, TYPE II, 9 INCH	SO YD	750	750				
44201757	CLASS D PATCHES, TYPE III, 9 INCH	SO YD	750	750				
44201759	CLASS D PATCHES, TYPE IV, 9 INCH	SO YD	750	750				
48203029	HOT-MIX ASPHALT SHOULDERS, 8"	SO YD	3975	3975				
60252800	CATCH BASINS TO BE RECONSTRUCTED	EACH	2	2				
60255700	MANHOLES TO BE ADJUSTED WITH NEW TYPE 1 FRAME, OPEN LID	EACH	1	1				
60255800	MANHOLES TO BE ADJUSTED WITH NEW TYPE 1 FRAME, CLOSED LID	EACH	1	1				
60265700	VALVE VAULTS TO BE ADJUSTED	EACH	3	3				
60300105	FRAMES AND GRATES TO BE ADJUSTED	EACH	2	2				
60300305	FRAMES AND LIDS TO BE ADJUSTED	EACH	1	1				

FILE NAME =	USER NAME = Doasia	DESIGNED -	REVISED -
pw:\planroom\dat\illinois\gov\PI\DOT\Documents\DOT	Offices\District\Projects\DI27020\CAD\Drawings\DI27020-3	DESIGNED -	REVISED -
	PLLOT SCALE = 100.0000' / 1in.	CHECKED -	REVISED -
	PLLOT DATE = 3/26/2020	DATE -	REVISED -

**STATE OF ILLINOIS
DEPARTMENT OF TRANSPORTATION**

SUMMARY OF QUANTITIES			
SCALE:	SHEET NO.	OF SHEETS	STA. TO STA.

F.A.P. RTE.	SECTION	COUNTY	TOTAL SHEETS	SHEET NO.
303	2019-094-RS-SW&SR	LAKE	30	3
FED. ROAD DIST. NO. 1 ILLINOIS FED. AID PROJECT			CONTRACT NO. 62192	

REV-SEP

SUMMARY OF QUANTITIES			TOTAL QUANTITIES	CONSTRUCTION TYPE CODE				
CODE NO	ITEM	UNIT		80% FEDERAL 20% STATE URBAN 0005				
60404940	FRAMES AND GRATES, TYPE 23	EACH	1	1				
63100167	TRAFFIC BARRIER TERMINAL, TYPE 1 (SPECIAL) TANGENT	EACH	2	2				
* 63200310	GUARDRAIL REMOVAL	FOOT	100	100				
* 66900200	NON-SPECIAL WASTE DISPOSAL	CU YD	107	107				
* 66900530	SOIL DISPOSAL ANALYSIS	EACH	4	4				
* 66901001	REGULATED SUBSTANCES PRE-CONSTRUCTION PLAN	LSUM	1	1				
* 66901003	REGULATED SUBSTANCES FINAL CONSTRUCTION REPORT	LSUM	1	1				
* 66901006	REGULATED SUBSTANCES MONITORING	CAL DA	15	15				
67000400	ENGINEER'S FIELD OFFICE, TYPE A	CAL MO	6	6				
67100100	MOBILIZATION	L SUM	1	1				
70100460	TRAFFIC CONTROL AND PROTECTION, STANDARD 701306	L SUM	1	1				
70100600	TRAFFIC CONTROL AND PROTECTION, STANDARD 701336	L SUM	1	1				
70102620	TRAFFIC CONTROL AND PROTECTION, STANDARD 701501	L SUM	1	1				

SUMMARY OF QUANTITIES			TOTAL QUANTITIES	CONSTRUCTION TYPE CODE				
CODE NO	ITEM	UNIT		80% FEDERAL 20% STATE URBAN 0005				
70102622	TRAFFIC CONTROL AND PROTECTION, STANDARD 701502	L SUM	1	1				
70102635	TRAFFIC CONTROL AND PROTECTION, STANDARD 701701	L SUM	1	1				
70102640	TRAFFIC CONTROL AND PROTECTION, STANDARD 701801	L SUM	1	1				
70300100	SHORT TERM PAVEMENT MARKING	FOOT	49872	49872				
70300150	SHORT TERM PAVEMENT MARKING REMOVAL	SO FT	16624	16624				
70300210	TEMPORARY PAVEMENT MARKING LETTERS AND SYMBOLS	SO FT	1269	1269				
70300220	TEMPORARY PAVEMENT MARKING - LINE 4"	FOOT	55249	55249				
70300240	TEMPORARY PAVEMENT MARKING - LINE 6"	FOOT	5490	5490				
70300250	TEMPORARY PAVEMENT MARKING - LINE 8"	FOOT	565	565				
70300260	TEMPORARY PAVEMENT MARKING - LINE 12"	FOOT	1443	1443				
70300280	TEMPORARY PAVEMENT MARKING - LINE 24"	FOOT	1052	1052				
* 78000100	THERMOPLASTIC PAVEMENT MARKING - LETTERS AND SYMBOLS	SO FT	1269	1269				
* 78000200	THERMOPLASTIC PAVEMENT MARKING - LINE 4"	FOOT	43050	43050				
* - SPECIALTY ITEMS								

FILE NAME =	USER NAME = Doasia	DESIGNED -	REVISED -
p:\planroom\dtd\illinois\gov\PI\DOT\Documents\DOT	Offices\District\Projects\DI27020\CAD\Drawings\Design\DI27020-3	BY	DATE
	PLLOT SCALE = 100.0000' / 1in.	CHECKED -	REVISED -
	PLLOT DATE = 3/27/2020	DATE -	REVISED -

**STATE OF ILLINOIS
DEPARTMENT OF TRANSPORTATION**

SUMMARY OF QUANTITIES			
SCALE:	SHEET NO.	OF SHEETS	STA. TO STA.

F.A.P. RTE.	SECTION	COUNTY	TOTAL SHEETS	SHEET NO.
303	2019-094-RS-SW&SR	LAKE	30	4
FED. ROAD DIST. NO. 1 ILLINOIS FED. AID PROJECT			CONTRACT NO. 62192	

REV-SEP

SUMMARY OF QUANTITIES			TOTAL QUANTITIES	CONSTRUCTION TYPE CODE				
CODE NO	ITEM	UNIT		80% FEDERAL 20% STATE URBAN 0005				
* 78000400	THERMOPLASTIC PAVEMENT MARKING - LINE 6"	FOOT	5490	5490				
* 78000500	THERMOPLASTIC PAVEMENT MARKING - LINE 8"	FOOT	565	565				
* 78000600	THERMOPLASTIC PAVEMENT MARKING - LINE 12"	FOOT	1443	1443				
* 78000650	THERMOPLASTIC PAVEMENT MARKING - LINE 24"	FOOT	1052	1052				
* 78100100	RAISED REFLECTIVE PAVEMENT MARKER	EACH	711	711				
78300200	RAISED REFLECTIVE PAVEMENT MARKER REMOVAL	EACH	711	711				
* 88600600	DETECTOR LOOP REPLACEMENT	FOOT	3708	3708				
X0320050	CONSTRUCTION LAYOUT (SPECIAL)	L SUM	1	1				
X6030310	FRAMES AND LIDS TO BE ADJUSTED (SPECIAL)	EACH	25	25				
Z0004562	COMBINATION CONCRETE CURB AND GUTTER REMOVAL AND REPLACEMENT	FOOT	350	350				
□ Z0018500	DRAINAGE STRUCTURES TO BE CLEANED	EACH	65	65				
Z0030850	TEMPORARY INFORMATION SIGNING	SO FT	52	52				

SUMMARY OF QUANTITIES			TOTAL QUANTITIES	CONSTRUCTION TYPE CODE				
CODE NO	ITEM	UNIT		80% FEDERAL 20% STATE URBAN 0005				
Z0033700	LONGITUDINAL JOINT SEALANT	FOOT	42100	42100				
∅ Z0076600	TRAINEES	HOURL	500	500				
∅ Z0076604	TRAINEES - TRAINING PROGRAM GRADUATE	HOURL	500	500				

FILE NAME =	USER NAME = Doosta	DESIGNED -	REVISED -
pw:\planroom\dtd\illinois\gov\PI\DOT\Documents\DOT - Offices\Director\Projects\DI27020\CADD\Info\Design\DI27020-SP\DRAWN		BY	DATE
	PLOT SCALE = 100,0000' / 1" =	CHECKED -	REVISED -
	PLOT DATE = 3/26/2020	DATE -	REVISED -

**STATE OF ILLINOIS
DEPARTMENT OF TRANSPORTATION**

SUMMARY OF QUANTITIES

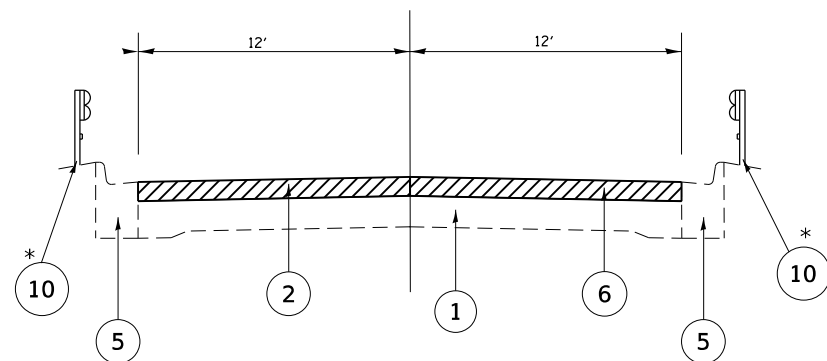
SCALE: SHEET NO. OF SHEETS STA. TO STA.

F.A.P. RTE.	SECTION	COUNTY	TOTAL SHEETS	SHEET NO.
303	2019-094-RS-SW&SR	LAKE	30	5
CONTRACT NO.			62192	
FED. ROAD DIST. NO. 1 ILLINOIS FED. AID PROJECT				

∅ 0042

REV-SEP

IL. RTE. 173



EXISTING TYPICAL SECTION

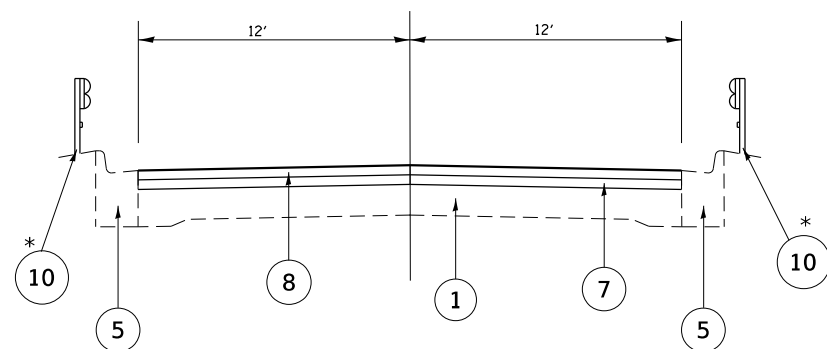
STA. 117+50 TO STA. 122+50
STA. 173+00 TO STA. 177+67

LEGEND

- ① EXISTING P.C.C. PAVEMENT ±9"
- ② EXISTING HMA PAVEMENT ±5"
- ③ EXISTING HMA SHOULDER, 8"
- ④ EXISTING AGGREGATE SHOULDER, 8"
- ⑤ EXISTING COMBINATION CONCRETE CURB & GUTTER, TYPE B-6.24
- ⑥ PROPOSED HMA SURFACE REMOVAL, 3¾"
- ⑦ PROPOSED HMA BINDER COURSE IL-9.5 , N70, 2"
- ⑧ PROPOSED HMA SURFACE COURSE, MIX "D", IL-9.5, N70, 1¾"
- ⑨ PROPOSED HMA SHOULDER, 8"
- ⑩ PROPOSED STEEL PLATE BEAM GUARDRAIL

* PROPOSED END SECTION GUARDRAIL LOCATIONS
STA. 89+22 & STA. 91+22 (WESTBOUND)

IL. RTE. 173



PROPOSED TYPICAL SECTION

STA. 117+50 TO STA. 122+50
STA. 173+00 TO STA. 177+67

MODEL: Default
FILE: \\hpc1\p\pub\hpc\room\dat\illinois\gov\p\w\DOT\Documents\DOT_Offices\Director_1\Projects\1172020\CADD\Drawings\1172020-sh-ty-typical.dgn

USER NAME = Daasia	DESIGNED -	REVISED -
	DRAWN -	REVISED -
PLOT SCALE = 100.0000' / in.	CHECKED -	REVISED -
PLOT DATE = 3/26/2020	DATE -	REVISED -

**STATE OF ILLINOIS
DEPARTMENT OF TRANSPORTATION**

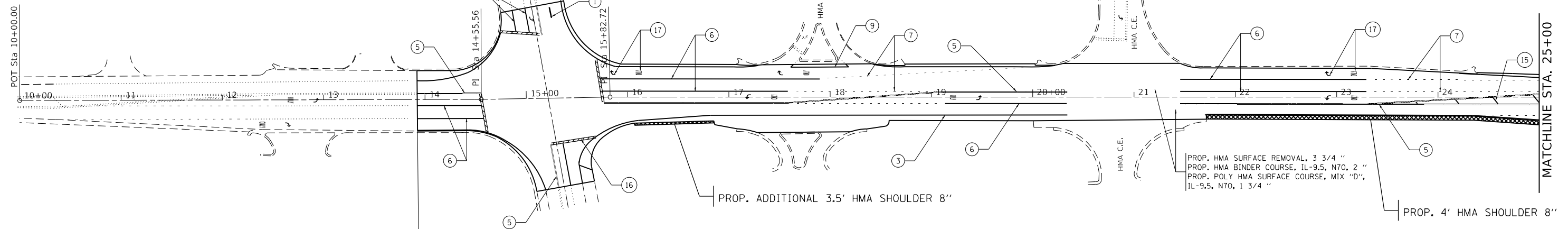
**FAP 303 - IL 173 - /IL 131 (GREEN BAY RD.) TO IL 137 (SHERIDAN RD.)
EXISTING AND PROPOSED TYPICAL SECTION**

SCALE: SHEET OF SHEETS STA. TO STA.

F.A.P. RTE.	SECTION	COUNTY	TOTAL SHEETS	SHEET NO.
303	2019-094-R5-SW&SR	LAKE	30	7
			CONTRACT NO. 62J92	
		ILLINOIS	FED. AID PROJECT	

IL. ROUTE 131
(N. GREEN BAY RD.)

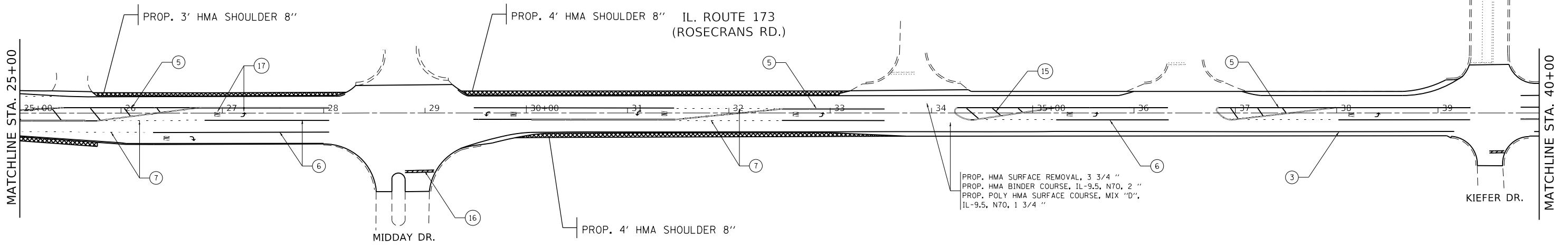
IL. ROUTE 173
(ROSECRANS RD.)



PROJECT BEGINS
STA. 13+92

PROPOSED PAVEMENT MARKINGS LEGEND

- | | | |
|---|---|--|
| ① THERMOPLASTIC PVMT. MARKING LINE 4", SKIP-DASH, WHITE, - 10' LINE WITH 30' SPACE - LANE LINES (TYP.) | ⑧ THERMOPLASTIC PVMT. MARKING LINE 6", SOLID, WHITE, 2 @ 6" - CROSSWALK LINES (PEDESTRIAN) (TYP.) | ⑮ THERMOPLASTIC PVMT. MARKING LINE 12", SOLID, YELLOW -PAINTED MEDIAN DIAGONALS (TYP.) - SEE DISTRICT DETAIL TC-13 FOR SPACING |
| ② THERMOPLASTIC PVMT. MARKING LINE 4", SKIP-DASH, - YELLOW, - 10' LINE WITH 30' SPACE - LANE LINES (TYP.) | ⑨ THERMOPLASTIC PVMT. MARKING LINE 8", SOLID, WHITE - GORE MARKING AND CHANNELIZING LINES (TYP.) | ⑯ THERMOPLASTIC PVMT. MARKING LINE 24", SOLID, WHITE - STOP LINES (TYP.) |
| ③ THERMOPLASTIC PVMT. MARKING LINE 4", SOLID, WHITE, - EDGE LINES (TYP.) | ⑩ THERMOPLASTIC PVMT. MARKING LINE 8", SOLID, YELLOW - GORE MARKING AND CHANNELIZING LINES (TYP.) | ⑰ THERMOPLASTIC PVMT. MARKING LETTERS & SYMBOLS, 8", SOLID, WHITE - TURN LANE MARKINGS (TYP.) |
| ④ THERMOPLASTIC PVMT. MARKING LINE 4", SOLID, YELLOW - EDGE LINES (TYP.) | ⑪ THERMOPLASTIC PVMT. MARKING LINE 12", SOLID, CHEVRON WHITE - GORE DIAGONALS (TYP.) - SEE DISTRICT DETAIL TC-13 FOR SPACING | |
| ⑤ THERMOPLASTIC PVMT. MARKING LINE 4", SOLID, YELLOW, 2 @ 4", 11" C-C - CENTERLINE (TYP.) | ⑫ THERMOPLASTIC PVMT. MARKING LINE 12", SOLID, CHEVRON YELLOW - GORE DIAGONALS (TYP.) - SEE DISTRICT DETAIL TC-13 FOR SPACING | |
| ⑥ THERMOPLASTIC PVMT. MARKING LINE 6", SOLID, WHITE - TURN LANE MARKINGS (TYP.) | ⑬ THERMOPLASTIC PVMT. MARKING LINE 12", SOLID, WHITE - SHOULDER DIAGONALS (TYP.) (SEE DISTRICT DETAIL TC-13 FOR SPACING) | |
| ⑦ THERMOPLASTIC PVMT. MARKING LINE 6", SKIP-DASH, WHITE, - 2' LINE WITH 6' SPACE - DOTTED LINES (TYP.) | ⑭ THERMOPLASTIC PVMT. MARKING LINE 12", SOLID, WHITE - CROSSWALK, LONGITUDINAL BARS (SCHOOL) (TYP.) - SEE DISTRICT DETAIL TC-13 FOR SPACING | |



MODEL: Default
 FILE: h:\m\c_p\pub\barroom.dwg
 PROJECT: 1272020\Cadd\barroom.dwg
 PROJECT: 1272020\Cadd\barroom.dwg
 PROJECT: 1272020\Cadd\barroom.dwg

USER NAME = Daasia	DESIGNED -	REVISED -
	DRAWN -	REVISED -
PLOT SCALE = 100.0000' / in.	CHECKED -	REVISED -
PLOT DATE = 3/26/2020	DATE -	REVISED -

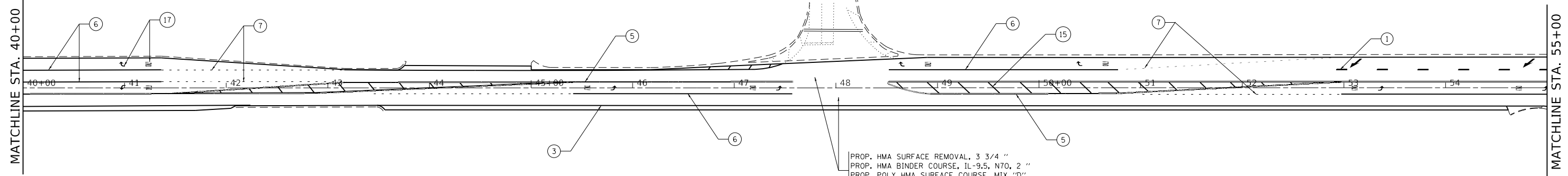
**STATE OF ILLINOIS
DEPARTMENT OF TRANSPORTATION**

ROADWAY AND PAVEMENT MARKING PLAN
IL. ROUTE 173 (ROSECRANS RD.) IL. ROUTE 131 - IL. ROUTE 137
 SCALE: 1"=50' SHEET OF SHEETS STA. TO STA.

F.A.P. RTE.	SECTION	COUNTY	TOTAL SHEETS	SHEET NO.
303	2019-094-RS & SR	LAKE	30	8
CONTRACT NO. 62J92				
ILLINOIS FED. AID PROJECT				



IL. ROUTE 173
(ROSECRANS RD.)



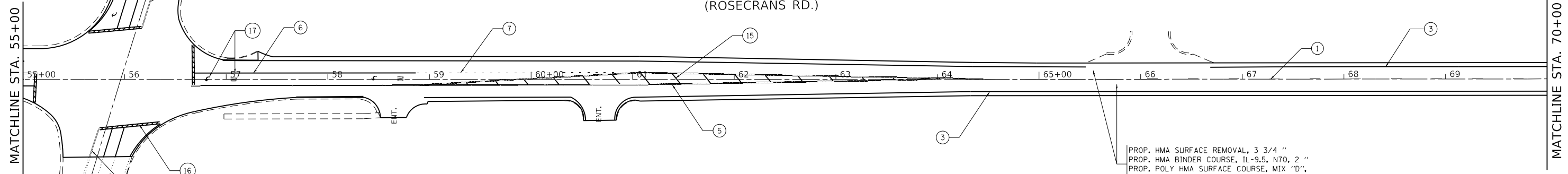
PROP. HMA SURFACE REMOVAL, 3 3/4 "
PROP. HMA BINDER COURSE, IL-9.5, N70, 2 "
PROP. POLY HMA SURFACE COURSE, MIX "D",
IL-9.5, N70, 1 3/4 "

PROPOSED PAVEMENT MARKINGS LEGEND

- ① THERMOPLASTIC PVM. MARKING LINE 4", SKIP-DASH, WHITE, - 10' LINE WITH 30' SPACE - LANE LINES (TYP.)
- ② THERMOPLASTIC PVM. MARKING LINE 4", SKIP-DASH, YELLOW, - 10' LINE WITH 30' SPACE - LANE LINES (TYP.)
- ③ THERMOPLASTIC PVM. MARKING LINE 4", SOLID, WHITE, - EDGE LINES (TYP.)
- ④ THERMOPLASTIC PVM. MARKING LINE 4", SOLID, YELLOW - EDGE LINES (TYP.)
- ⑤ THERMOPLASTIC PVM. MARKING LINE 4", SOLID, YELLOW, 2 @ 4", 11" C-C - CENTERLINE (TYP.)
- ⑥ THERMOPLASTIC PVM. MARKING LINE 6", SOLID, WHITE - TURN LANE MARKINGS (TYP.)
- ⑦ THERMOPLASTIC PVM. MARKING LINE 6", SKIP-DASH, WHITE, - 2' LINE WITH 6' SPACE - DOTTED LINES (TYP.)
- ⑧ THERMOPLASTIC PVM. MARKING LINE 6", SOLID, WHITE, 2 @ 6" - CROSSWALK LINES (PEDESTRIAN) (TYP.)
- ⑨ THERMOPLASTIC PVM. MARKING LINE 8", SOLID, WHITE - GORE MARKING AND CHANNELIZING LINES (TYP.)
- ⑩ THERMOPLASTIC PVM. MARKING LINE 8", SOLID, YELLOW - GORE MARKING AND CHANNELIZING LINES (TYP.)
- ⑪ THERMOPLASTIC PVM. MARKING LINE 12", SOLID, CHEVRON WHITE - GORE DIAGONALS (TYP.) - SEE DISTRICT DETAIL TC-13 FOR SPACING
- ⑫ THERMOPLASTIC PVM. MARKING LINE 12", SOLID, CHEVRON YELLOW - GORE DIAGONALS (TYP.) - SEE DISTRICT DETAIL TC-13 FOR SPACING
- ⑬ THERMOPLASTIC PVM. MARKING LINE 12", SOLID, WHITE - SHOULDER DIAGONALS (TYP.) (SEE DISTRICT DETAIL TC-13 FOR SPACING)
- ⑭ THERMOPLASTIC PVM. MARKING LINE 12", SOLID, WHITE - CROSSWALK, LONGITUDINAL BARS (SCHOOL) (TYP.) - SEE DISTRICT DETAIL TC-13 FOR SPACING
- ⑮ THERMOPLASTIC PVM. MARKING LINE 12", SOLID, YELLOW -PAINTED MEDIAN DIAGONALS (TYP.) - SEE DISTRICT DETAIL TC-13 FOR SPACING
- ⑯ THERMOPLASTIC PVM. MARKING LINE 24", SOLID, WHITE - STOP LINES (TYP.)
- ⑰ THERMOPLASTIC PVM. MARKING LETTERS & SYMBOLS, 8", SOLID, WHITE - TURN LANE MARKINGS (TYP.)



IL. ROUTE 173
(ROSECRANS RD.)



PROP. HMA SURFACE REMOVAL, 3 3/4 "
PROP. HMA BINDER COURSE, IL-9.5, N70, 2 "
PROP. POLY HMA SURFACE COURSE, MIX "D",
IL-9.5, N70, 1 3/4 "

MODEL: Default
FILE: \\blm\c:\pub\blm\room\dat\illinois\gov\pww\dot\Documents\IBDOT_Offices\blm\172020\CaddData\Design\172020-sh-rlan.dgn

USER NAME = Daasia	DESIGNED -	REVISED -
	DRAWN -	REVISED -
PLOT SCALE = 100.0000' / in.	CHECKED -	REVISED -
PLOT DATE = 3/26/2020	DATE -	REVISED -

**STATE OF ILLINOIS
DEPARTMENT OF TRANSPORTATION**

ROADWAY AND PAVEMENT MARKING PLAN			
IL. ROUTE 173 (ROSECRANS RD.) IL. ROUTE 131 - IL. ROUTE 137			
SCALE: 1"=50'	SHEET	OF SHEETS	STA. TO STA.

F.A.P. RTE.	SECTION	COUNTY	TOTAL SHEETS	SHEET NO.
303	2019-094-RS & SR	LAKE	30	9
CONTRACT NO. 62J92				
ILLINOIS FED. AID PROJECT				



IL. ROUTE 173
(ROSECRANS RD.)

LYDIA AVE.

MATCHLINE STA. 70+00

MATCHLINE STA. 85+00

70+00 71 72 73 74 75+00 76 77 78 79 80+00 81 82 83 84

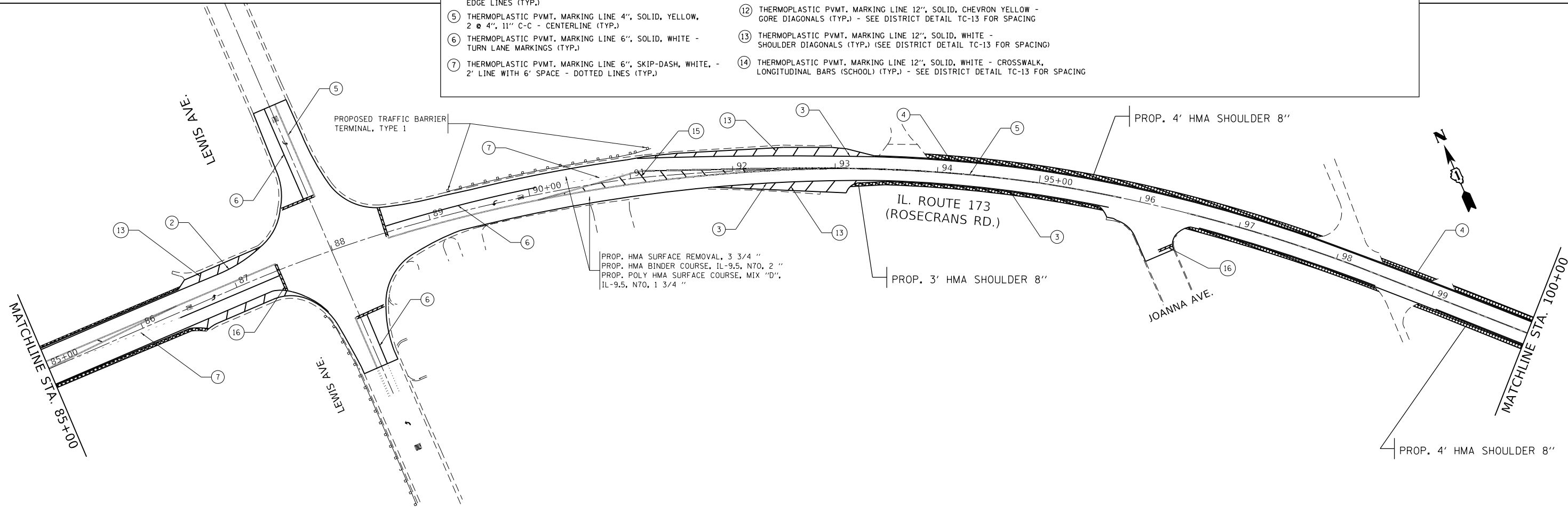
PROP. HMA SURFACE REMOVAL, 3 3/4 "
 PROP. HMA BINDER COURSE, IL-9.5, N70, 2 "
 PROP. POLY HMA SURFACE COURSE, MIX "D",
 IL-9.5, N70, 1 3/4 "

PROP. HMA SURFACE REMOVAL, 3 3/4 "
 PROP. HMA BINDER COURSE, IL-9.5, N70, 2 "
 PROP. POLY HMA SURFACE COURSE, MIX "D",
 IL-9.5, N70, 1 3/4 "

PROP. ADDITIONAL 2' HMA SHOULDER 8"

PROPOSED PAVEMENT MARKINGS LEGEND

- ① THERMOPLASTIC PVMT. MARKING LINE 4", SKIP-DASH, WHITE, - 10' LINE WITH 30' SPACE - LANE LINES (TYP.)
- ② THERMOPLASTIC PVMT. MARKING LINE 4", SKIP-DASH, YELLOW, - 10' LINE WITH 30' SPACE - LANE LINES (TYP.)
- ③ THERMOPLASTIC PVMT. MARKING LINE 4", SOLID, WHITE, - EDGE LINES (TYP.)
- ④ THERMOPLASTIC PVMT. MARKING LINE 4", SOLID, YELLOW - EDGE LINES (TYP.)
- ⑤ THERMOPLASTIC PVMT. MARKING LINE 4", SOLID, YELLOW, 2 @ 4", 11" C-C - CENTERLINE (TYP.)
- ⑥ THERMOPLASTIC PVMT. MARKING LINE 6", SOLID, WHITE - TURN LANE MARKINGS (TYP.)
- ⑦ THERMOPLASTIC PVMT. MARKING LINE 6", SKIP-DASH, WHITE, - 2' LINE WITH 6' SPACE - DOTTED LINES (TYP.)
- ⑧ THERMOPLASTIC PVMT. MARKING LINE 6", SOLID, WHITE, 2 @ 6" - CROSSWALK LINES (PEDESTRIAN) (TYP.)
- ⑨ THERMOPLASTIC PVMT. MARKING LINE 8", SOLID, WHITE - GORE MARKING AND CHANNELIZING LINES (TYP.)
- ⑩ THERMOPLASTIC PVMT. MARKING LINE 8", SOLID, YELLOW - GORE MARKING AND CHANNELIZING LINES (TYP.)
- ⑪ THERMOPLASTIC PVMT. MARKING LINE 12", SOLID, CHEVRON WHITE - GORE DIAGONALS (TYP.) - SEE DISTRICT DETAIL TC-13 FOR SPACING
- ⑫ THERMOPLASTIC PVMT. MARKING LINE 12", SOLID, CHEVRON YELLOW - GORE DIAGONALS (TYP.) - SEE DISTRICT DETAIL TC-13 FOR SPACING
- ⑬ THERMOPLASTIC PVMT. MARKING LINE 12", SOLID, WHITE - SHOULDER DIAGONALS (TYP.) (SEE DISTRICT DETAIL TC-13 FOR SPACING)
- ⑭ THERMOPLASTIC PVMT. MARKING LINE 12", SOLID, WHITE - CROSSWALK, LONGITUDINAL BARS (SCHOOL) (TYP.) - SEE DISTRICT DETAIL TC-13 FOR SPACING
- ⑮ THERMOPLASTIC PVMT. MARKING LINE 12", SOLID, YELLOW -PAINTED MEDIAN DIAGONALS (TYP.) - SEE DISTRICT DETAIL TC-13 FOR SPACING
- ⑯ THERMOPLASTIC PVMT. MARKING LINE 24", SOLID, WHITE - STOP LINES (TYP.)
- ⑰ THERMOPLASTIC PVMT. MARKING LETTERS & SYMBOLS, 8", SOLID, WHITE - TURN LANE MARKINGS (TYP.)



PROP. HMA SURFACE REMOVAL, 3 3/4 "
 PROP. HMA BINDER COURSE, IL-9.5, N70, 2 "
 PROP. POLY HMA SURFACE COURSE, MIX "D",
 IL-9.5, N70, 1 3/4 "

PROP. 3' HMA SHOULDER 8"

PROP. 4' HMA SHOULDER 8"

PROP. 4' HMA SHOULDER 8"



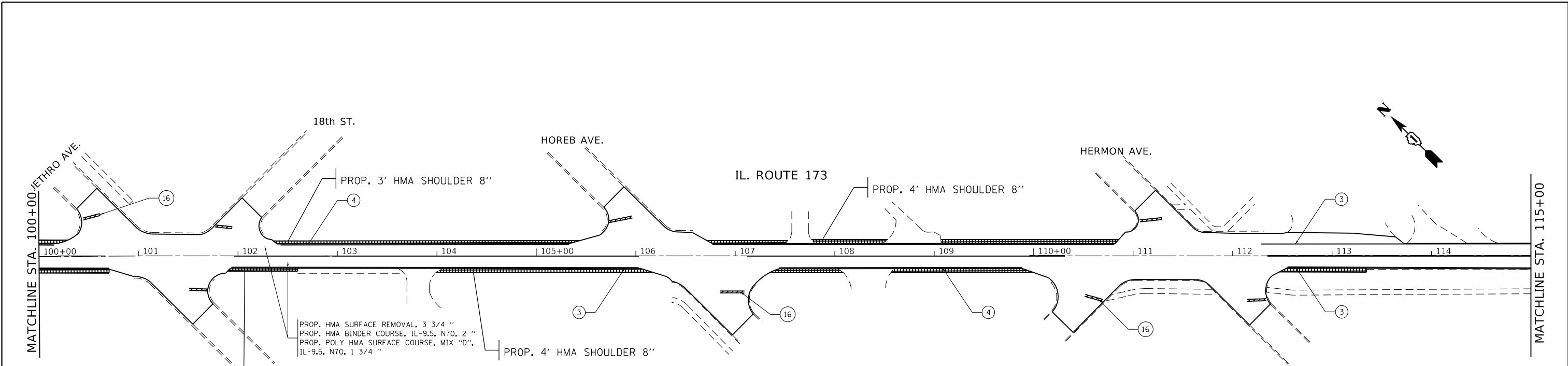
MODEL: Default
 FILE: h:\a\c\p\pub\barroom.dwg
 PROJECT: 172020\CD\Drawings\DOT\Office\Drawings\172020-sh-1-bar.dwg

USER NAME = Daasia	DESIGNED -	REVISED -
	DRAWN -	REVISED -
PLOT SCALE = 100,0000 ' / in.	CHECKED -	REVISED -
PLOT DATE = 3/26/2020	DATE -	REVISED -

**STATE OF ILLINOIS
DEPARTMENT OF TRANSPORTATION**

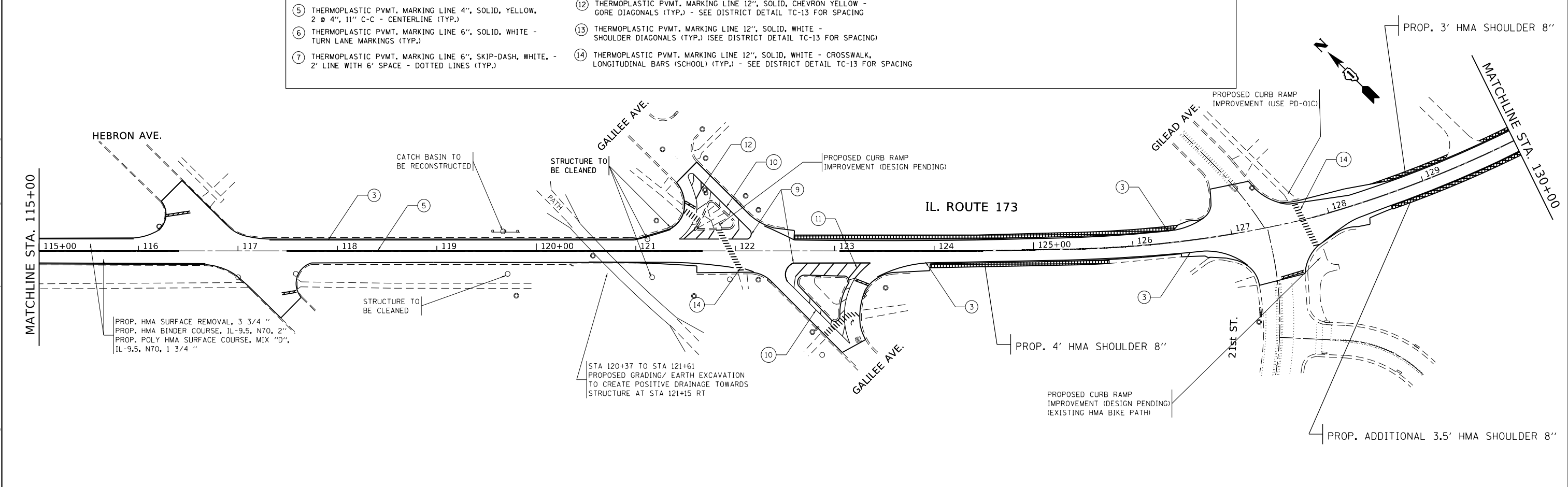
ROADWAY AND PAVEMENT MARKING PLAN
IL. ROUTE 173 (ROSECRANS RD.) IL. ROUTE 131 -IL. ROUTE 137
 SCALE: 1"=50' SHEET OF SHEETS STA. TO STA.

F.A.P. RTE.	SECTION	COUNTY	TOTAL SHEETS	SHEET NO.
303	2019-094-R5 & SR	LAKE	30	10
CONTRACT NO. 62J92				
ILLINOIS FED. AID PROJECT				



PROPOSED PAVEMENT MARKINGS LEGEND

<p>① THERMOPLASTIC PVMT. MARKING LINE 4", SKIP-DASH, WHITE, - 10' LINE WITH 30' SPACE - LANE LINES (TYP.)</p> <p>② THERMOPLASTIC PVMT. MARKING LINE 4", SKIP-DASH, - YELLOW, - 10' LINE WITH 30' SPACE - LANE LINES (TYP.)</p> <p>③ THERMOPLASTIC PVMT. MARKING LINE 4", SOLID, WHITE, - EDGE LINES (TYP.)</p> <p>④ THERMOPLASTIC PVMT. MARKING LINE 4", SOLID, YELLOW - EDGE LINES (TYP.)</p> <p>⑤ THERMOPLASTIC PVMT. MARKING LINE 4", SOLID, YELLOW, 2 @ 4", 11" C-C - CENTERLINE (TYP.)</p> <p>⑥ THERMOPLASTIC PVMT. MARKING LINE 6", SOLID, WHITE - TURN LANE MARKINGS (TYP.)</p> <p>⑦ THERMOPLASTIC PVMT. MARKING LINE 6", SKIP-DASH, WHITE, - 2' LINE WITH 6' SPACE - DOTTED LINES (TYP.)</p>	<p>⑧ THERMOPLASTIC PVMT. MARKING LINE 6", SOLID, WHITE, 2 @ 6" - CROSSWALK LINES (PEDESTRIAN) (TYP.)</p> <p>⑨ THERMOPLASTIC PVMT. MARKING LINE 8", SOLID, WHITE - GORE MARKING AND CHANNELIZING LINES (TYP.)</p> <p>⑩ THERMOPLASTIC PVMT. MARKING LINE 8", SOLID, YELLOW - GORE MARKING AND CHANNELIZING LINES (TYP.)</p> <p>⑪ THERMOPLASTIC PVMT. MARKING LINE 12", SOLID, CHEVRON WHITE - GORE DIAGONALS (TYP.) - SEE DISTRICT DETAIL TC-13 FOR SPACING</p> <p>⑫ THERMOPLASTIC PVMT. MARKING LINE 12", SOLID, CHEVRON YELLOW - GORE DIAGONALS (TYP.) - SEE DISTRICT DETAIL TC-13 FOR SPACING</p> <p>⑬ THERMOPLASTIC PVMT. MARKING LINE 12", SOLID, WHITE - SHOULDER DIAGONALS (TYP.) (SEE DISTRICT DETAIL TC-13 FOR SPACING)</p> <p>⑭ THERMOPLASTIC PVMT. MARKING LINE 12", SOLID, WHITE - CROSSWALK, LONGITUDINAL BARS (SCHOOL) (TYP.) - SEE DISTRICT DETAIL TC-13 FOR SPACING</p>	<p>⑮ THERMOPLASTIC PVMT. MARKING LINE 12", SOLID, YELLOW -PAINTED MEDIAN DIAGONALS (TYP.) - SEE DISTRICT DETAIL TC-13 FOR SPACING</p> <p>⑯ THERMOPLASTIC PVMT. MARKING LINE 24", SOLID, WHITE - STOP LINES (TYP.)</p> <p>⑰ THERMOPLASTIC PVMT. MARKING LETTERS & SYMBOLS, 8", SOLID, WHITE - TURN LANE MARKINGS (TYP.)</p>
--	---	--



MODEL: Default
 FILE: h:\m\c\p\pub\barroom.dwg
 PROJECT: 127020\CaddData\Design\127020-sh-rt-bar.dwg
 USER: Daasia

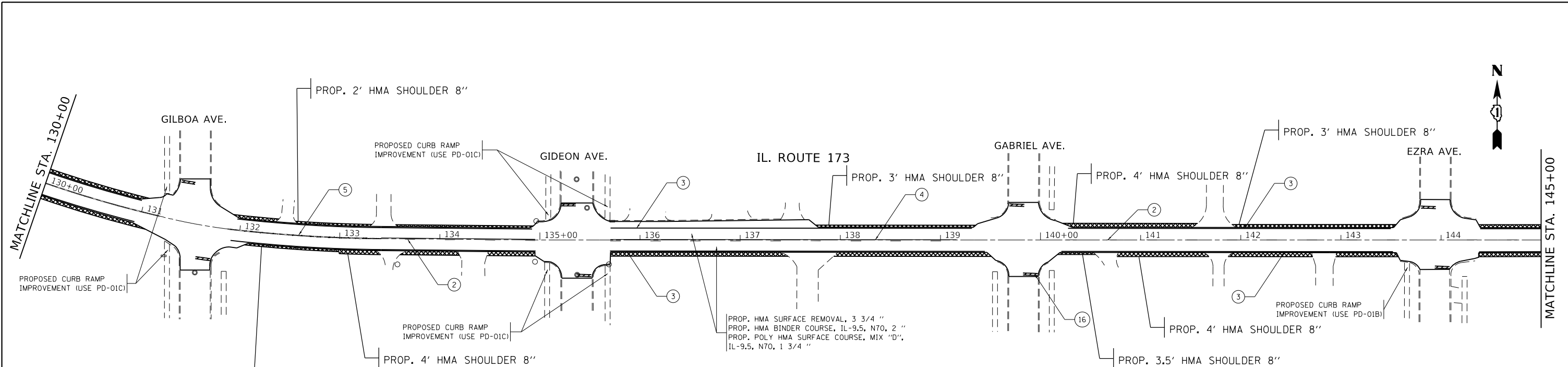
USER NAME = Daasia	DESIGNED -	REVISED -
PLOT SCALE = 100.0000' / in.	DRAWN -	REVISED -
PLOT DATE = 3/26/2020	CHECKED -	REVISED -
	DATE -	REVISED -

**STATE OF ILLINOIS
DEPARTMENT OF TRANSPORTATION**

ROADWAY AND PAVEMENT MARKING PLAN
IL. ROUTE 173 (ROSECRANS RD.) IL. ROUTE 131 -IL. ROUTE 137

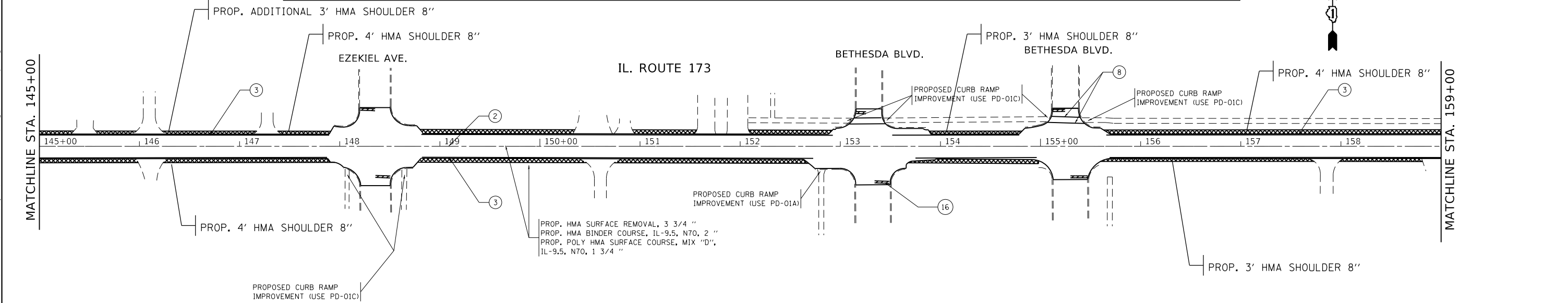
SCALE: 1"=50' SHEET OF SHEETS STA. TO STA.

F.A.P. RTE.	SECTION	COUNTY	TOTAL SHEETS	SHEET NO.
303	2019-094-RS & SR	LAKE	30	11
CONTRACT NO. 62J92				
ILLINOIS FED. AID PROJECT				



PROPOSED PAVEMENT MARKINGS LEGEND

① THERMOPLASTIC PVMT. MARKING LINE 4", SKIP-DASH, WHITE, - 10' LINE WITH 30' SPACE - LANE LINES (TYP.)	⑧ THERMOPLASTIC PVMT. MARKING LINE 6", SOLID, WHITE, 2 @ 6" - CROSSWALK LINES (PEDESTRIAN) (TYP.)	⑮ THERMOPLASTIC PVMT. MARKING LINE 12", SOLID, YELLOW -PAINTED MEDIAN DIAGONALS (TYP.) - SEE DISTRICT DETAIL TC-13 FOR SPACING
② THERMOPLASTIC PVMT. MARKING LINE 4", SKIP-DASH, - YELLOW, - 10' LINE WITH 30' SPACE - LANE LINES (TYP.)	⑨ THERMOPLASTIC PVMT. MARKING LINE 8", SOLID, WHITE - GORE MARKING AND CHANNELIZING LINES (TYP.)	⑯ THERMOPLASTIC PVMT. MARKING LINE 24", SOLID, WHITE - STOP LINES (TYP.)
③ THERMOPLASTIC PVMT. MARKING LINE 4", SOLID, WHITE, - EDGE LINES (TYP.)	⑩ THERMOPLASTIC PVMT. MARKING LINE 8", SOLID, YELLOW - GORE MARKING AND CHANNELIZING LINES (TYP.)	⑰ THERMOPLASTIC PVMT. MARKING LETTERS & SYMBOLS, 8", SOLID, WHITE - TURN LANE MARKINGS (TYP.)
④ THERMOPLASTIC PVMT. MARKING LINE 4", SOLID, YELLOW - EDGE LINES (TYP.)	⑪ THERMOPLASTIC PVMT. MARKING LINE 12", SOLID, CHEVRON WHITE - GORE DIAGONALS (TYP.) - SEE DISTRICT DETAIL TC-13 FOR SPACING	
⑤ THERMOPLASTIC PVMT. MARKING LINE 4", SOLID, YELLOW, 2 @ 4", 11" C-C - CENTERLINE (TYP.)	⑫ THERMOPLASTIC PVMT. MARKING LINE 12", SOLID, CHEVRON YELLOW - GORE DIAGONALS (TYP.) - SEE DISTRICT DETAIL TC-13 FOR SPACING	
⑥ THERMOPLASTIC PVMT. MARKING LINE 6", SOLID, WHITE - TURN LANE MARKINGS (TYP.)	⑬ THERMOPLASTIC PVMT. MARKING LINE 12", SOLID, WHITE - SHOULDER DIAGONALS (TYP.) (SEE DISTRICT DETAIL TC-13 FOR SPACING)	
⑦ THERMOPLASTIC PVMT. MARKING LINE 6", SKIP-DASH, WHITE, - 2' LINE WITH 6' SPACE - DOTTED LINES (TYP.)	⑭ THERMOPLASTIC PVMT. MARKING LINE 12", SOLID, WHITE - CROSSWALK, LONGITUDINAL BARS (SCHOOL) (TYP.) - SEE DISTRICT DETAIL TC-13 FOR SPACING	



MODEL: Default
 FILE: \\bls01\pub\blsroom\dat\illinois.gov\PWIDOT\Documents\DOT_Offices\District_1\Projects\172020\CaddData\Design\172020-sh-ct-lan.dgn

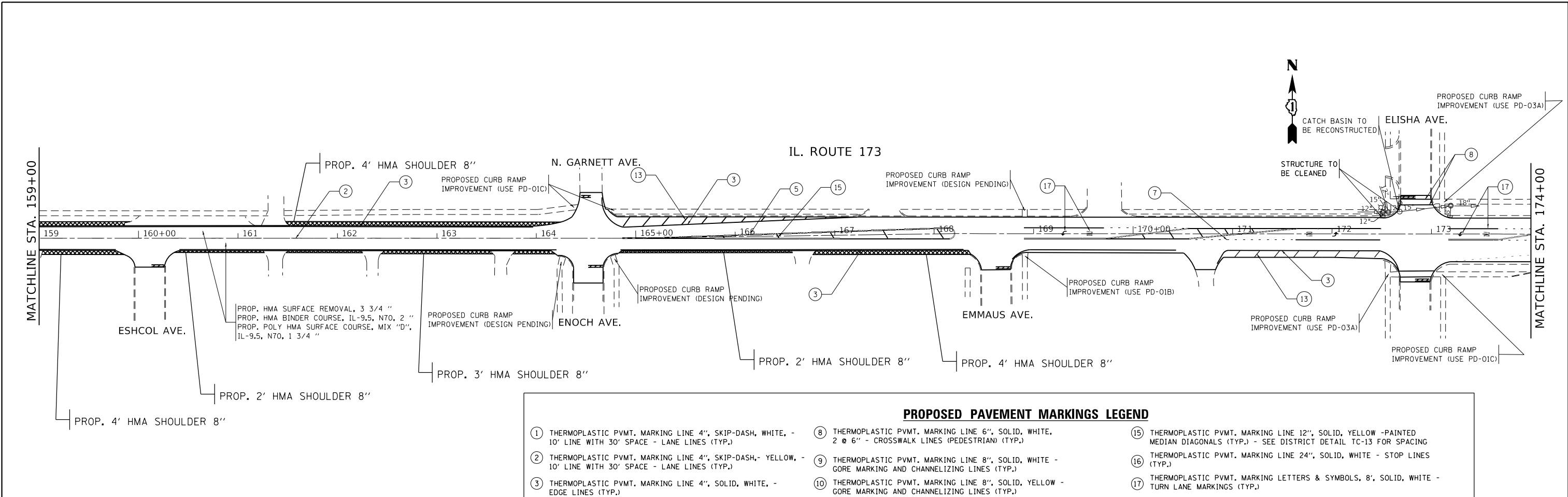
USER NAME = Daasia	DESIGNED -	REVISED -
PLOT SCALE = 100,0000' / in.	DRAWN -	REVISED -
PLOT DATE = 3/26/2020	CHECKED -	REVISED -
	DATE -	REVISED -

STATE OF ILLINOIS
DEPARTMENT OF TRANSPORTATION

ROADWAY AND PAVEMENT MARKING PLAN
IL. ROUTE 173 (ROSECRANS RD.) IL. ROUTE 131 -IL. ROUTE 137

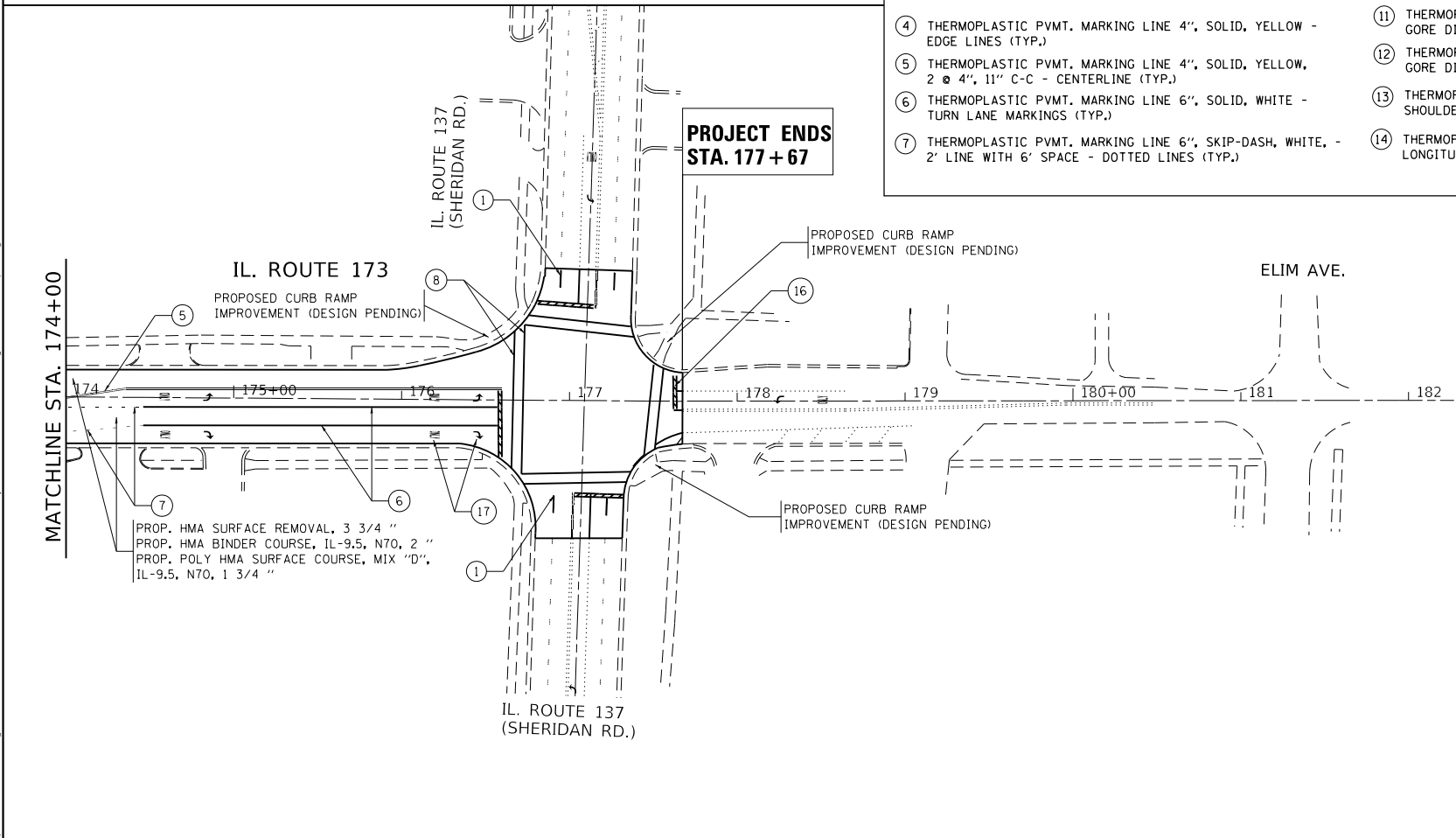
F.A.P. RTE.	SECTION	COUNTY	TOTAL SHEETS	SHEET NO.
303	2019-094-RS & SR	LAKE	30	12
CONTRACT NO. 62J92				
ILLINOIS FED. AID PROJECT				

SCALE: 1"=50' SHEET OF SHEETS STA. TO STA.



PROPOSED PAVEMENT MARKINGS LEGEND

① THERMOPLASTIC PVMT. MARKING LINE 4", SKIP-DASH, WHITE, - 10' LINE WITH 30' SPACE - LANE LINES (TYP.)	⑧ THERMOPLASTIC PVMT. MARKING LINE 6", SOLID, WHITE, 2 @ 6" - CROSSWALK LINES (PEDESTRIAN) (TYP.)	⑮ THERMOPLASTIC PVMT. MARKING LINE 12", SOLID, YELLOW -PAINTED MEDIAN DIAGONALS (TYP.) - SEE DISTRICT DETAIL TC-13 FOR SPACING
② THERMOPLASTIC PVMT. MARKING LINE 4", SKIP-DASH, - YELLOW, - 10' LINE WITH 30' SPACE - LANE LINES (TYP.)	⑨ THERMOPLASTIC PVMT. MARKING LINE 8", SOLID, WHITE - GORE MARKING AND CHANNELIZING LINES (TYP.)	⑯ THERMOPLASTIC PVMT. MARKING LINE 24", SOLID, WHITE - STOP LINES (TYP.)
③ THERMOPLASTIC PVMT. MARKING LINE 4", SOLID, WHITE, - EDGE LINES (TYP.)	⑩ THERMOPLASTIC PVMT. MARKING LINE 8", SOLID, YELLOW - GORE MARKING AND CHANNELIZING LINES (TYP.)	⑰ THERMOPLASTIC PVMT. MARKING LETTERS & SYMBOLS, 8', SOLID, WHITE - TURN LANE MARKINGS (TYP.)
④ THERMOPLASTIC PVMT. MARKING LINE 4", SOLID, YELLOW - EDGE LINES (TYP.)	⑪ THERMOPLASTIC PVMT. MARKING LINE 12", SOLID, CHEVRON WHITE - GORE DIAGONALS (TYP.) - SEE DISTRICT DETAIL TC-13 FOR SPACING	
⑤ THERMOPLASTIC PVMT. MARKING LINE 4", SOLID, YELLOW, 2 @ 4", 11" C-C - CENTERLINE (TYP.)	⑫ THERMOPLASTIC PVMT. MARKING LINE 12", SOLID, CHEVRON YELLOW - GORE DIAGONALS (TYP.) - SEE DISTRICT DETAIL TC-13 FOR SPACING	
⑥ THERMOPLASTIC PVMT. MARKING LINE 6", SOLID, WHITE - TURN LANE MARKINGS (TYP.)	⑬ THERMOPLASTIC PVMT. MARKING LINE 12", SOLID, WHITE - SHOULDER DIAGONALS (TYP.) (SEE DISTRICT DETAIL TC-13 FOR SPACING)	
⑦ THERMOPLASTIC PVMT. MARKING LINE 6", SKIP-DASH, WHITE, - 2' LINE WITH 6' SPACE - DOTTED LINES (TYP.)	⑭ THERMOPLASTIC PVMT. MARKING LINE 12", SOLID, WHITE - CROSSWALK, LONGITUDINAL BARS (SCHOOL) (TYP.) - SEE DISTRICT DETAIL TC-13 FOR SPACING	



MODEL: Default
 FILE: h:\mhc\p\pub\barroom.dwg
 PROJECT: 177020\Roadway\Drawings\177020-Roadway\177020-Roadway.dwg
 USER: Daasia

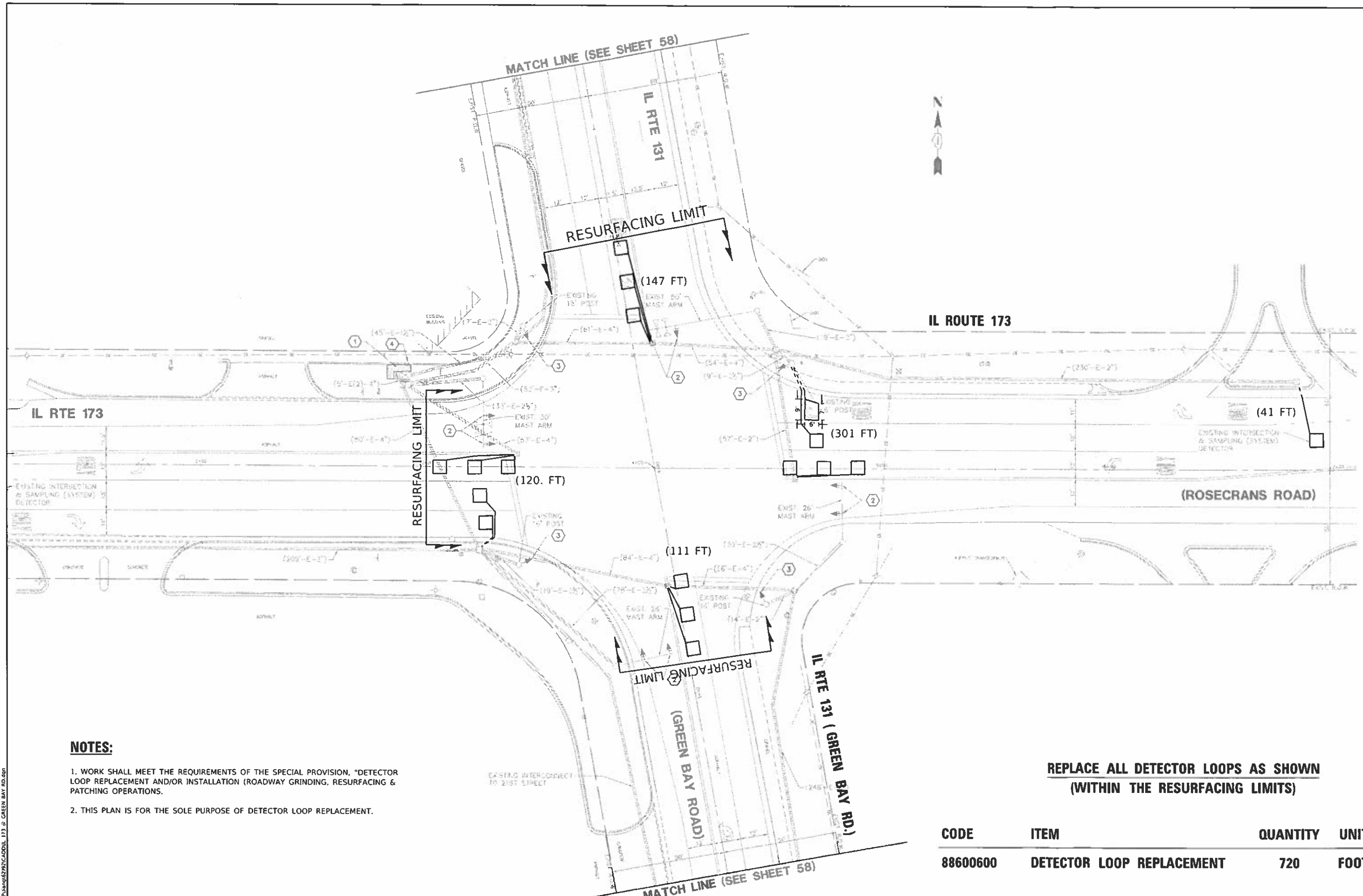
USER NAME = Daasia	DESIGNED -	REVISED -
	DRAWN -	REVISED -
PLOT SCALE = 100.0000' / in.	CHECKED -	REVISED -
PLOT DATE = 3/26/2020	DATE -	REVISED -

STATE OF ILLINOIS
DEPARTMENT OF TRANSPORTATION

ROADWAY AND PAVEMENT MARKING PLAN
IL. ROUTE 173 (ROSECRANS RD.) IL. ROUTE 131 -IL. ROUTE 137

SCALE: 1"=50' SHEET OF SHEETS STA. TO STA.

F.A.P. RTE.	SECTION	COUNTY	TOTAL SHEETS	SHEET NO.
303	2019-094-RS & SR	LAKE	30	13
CONTRACT NO. 62J92				
ILLINOIS FED. AID PROJECT				



NOTES:

1. WORK SHALL MEET THE REQUIREMENTS OF THE SPECIAL PROVISION, "DETECTOR LOOP REPLACEMENT AND/OR INSTALLATION (ROADWAY GRINDING, RESURFACING & PATCHING OPERATIONS).
2. THIS PLAN IS FOR THE SOLE PURPOSE OF DETECTOR LOOP REPLACEMENT.

**REPLACE ALL DETECTOR LOOPS AS SHOWN
(WITHIN THE RESURFACING LIMITS)**

CODE	ITEM	QUANTITY	UNIT
88600600	DETECTOR LOOP REPLACEMENT	720	FOOT

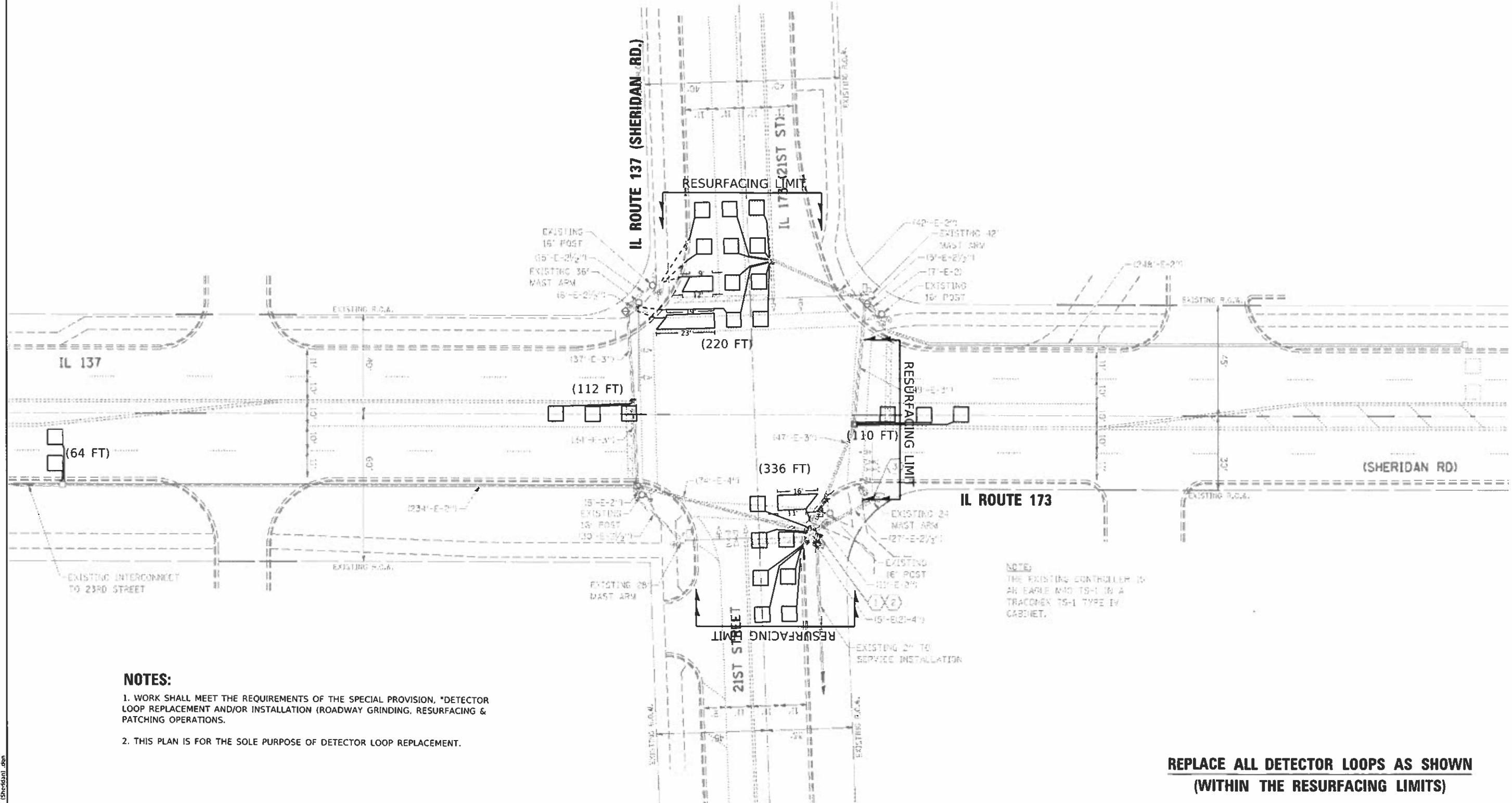
**STATE OF ILLINOIS
DEPARTMENT OF TRANSPORTATION**

**DETECTOR LOOP REPLACEMENT PLAN
IL ROUTE 173 AT GREEN BAY RD.**

F.A.P. RTE.	SECTION	COUNTY	TOTAL SHEETS	SHEET NO.
	2019-094-RS-SW6SR	LAKE	30	14
			CONTRACT NO. 62192	
ILLINOIS FED. AID PROJECT				

SCALE: 1"=20' SHEET OF SHEETS STA. TO STA.

MODIFIER: Default
 FILE NAME: S:\Illinois\2019\2020\CADD\173 & GREEN BAY RD.dwg



NOTES:

1. WORK SHALL MEET THE REQUIREMENTS OF THE SPECIAL PROVISION, "DETECTOR LOOP REPLACEMENT AND/OR INSTALLATION (ROADWAY GRINDING, RESURFACING & PATCHING OPERATIONS).
2. THIS PLAN IS FOR THE SOLE PURPOSE OF DETECTOR LOOP REPLACEMENT.

NOTE:
THE EXISTING CONTROLLER IS AN EARLE MFG TSH IN A TRACONEX TS-1 TYPE IV CABINET.

**REPLACE ALL DETECTOR LOOPS AS SHOWN
(WITHIN THE RESURFACING LIMITS)**

CODE	ITEM	QUANTITY	UNIT
88600600	DETECTOR LOOP REPLACEMENT	842	FOOT

MODIFIED: 2/5/2020
 FILE NAME: S:\P\BANK\2020\CADD\IL 173 (SHERIDAN).dgn

USER NAME: ilangr	DESIGNED - CJ	REVISED -
PLOT SCALE = 40,0000 1/16"	DRAWN - CJ	REVISED -
PLOT DATE = 2/5/2020	CHECKED - LP	REVISED -
	DATE - 2/4/2020	REVISED -

**STATE OF ILLINOIS
DEPARTMENT OF TRANSPORTATION**

**DETECTOR LOOP REPLACEMENT PLAN
IL ROUTE 173 AT IL ROUTE 137 (SHERIDAN RD.)**

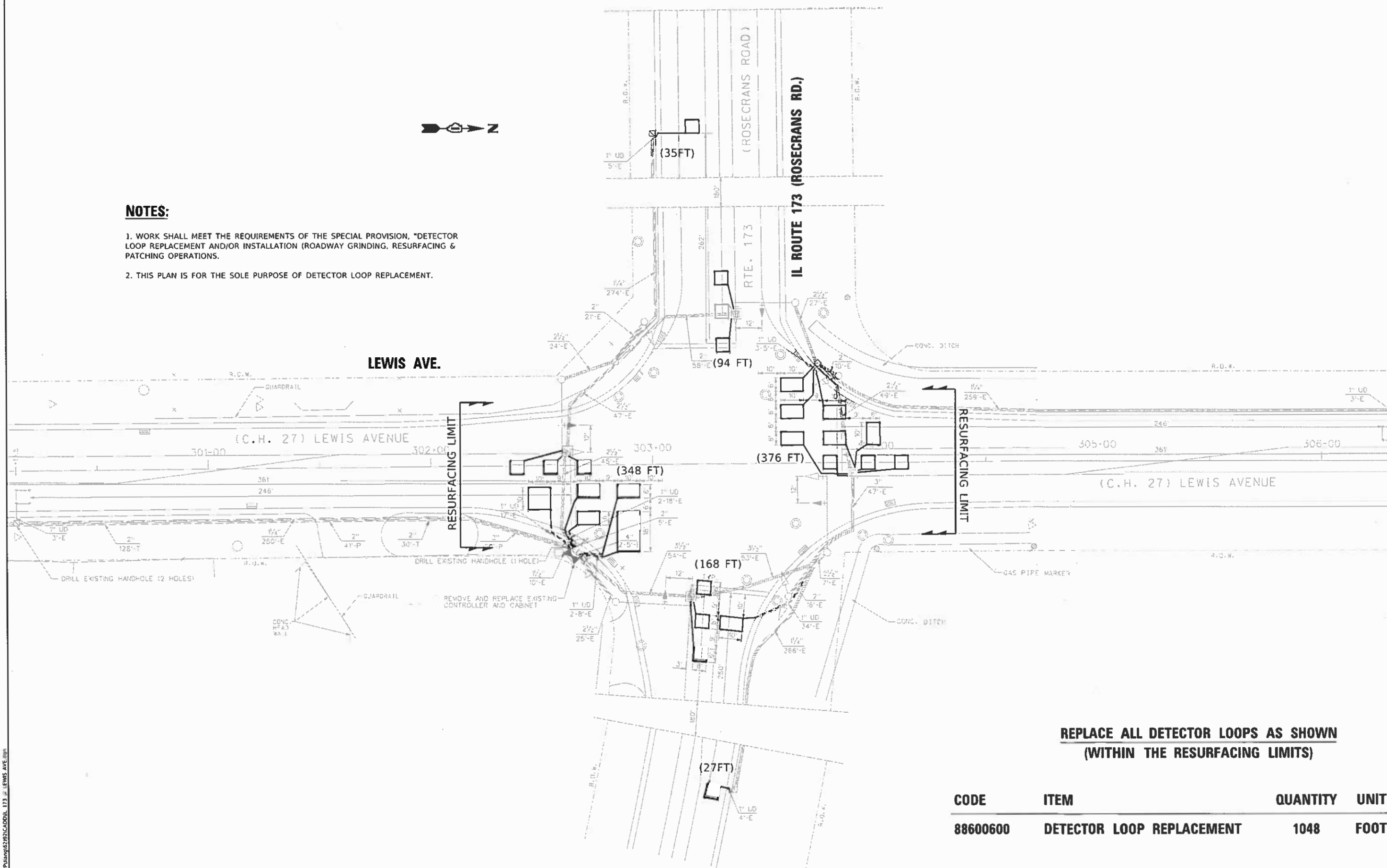
SCALE: 1"=20'
SHEET OF SHEETS STA. TO STA.

F.A.P. RTE.	SECTION	COUNTY	TOTAL SHEETS	SHEET NO.
	2019-094-RS-SW&SR	LAKE	30	15
CONTRACT NO. 62192				
ILLINOIS FED. AID PROJECT				



NOTES:

1. WORK SHALL MEET THE REQUIREMENTS OF THE SPECIAL PROVISION, "DETECTOR LOOP REPLACEMENT AND/OR INSTALLATION (ROADWAY GRINDING, RESURFACING & PATCHING OPERATIONS).
2. THIS PLAN IS FOR THE SOLE PURPOSE OF DETECTOR LOOP REPLACEMENT.



**REPLACE ALL DETECTOR LOOPS AS SHOWN
(WITHIN THE RESURFACING LIMITS)**

CODE	ITEM	QUANTITY	UNIT
88600600	DETECTOR LOOP REPLACEMENT	1048	FOOT

**STATE OF ILLINOIS
DEPARTMENT OF TRANSPORTATION**

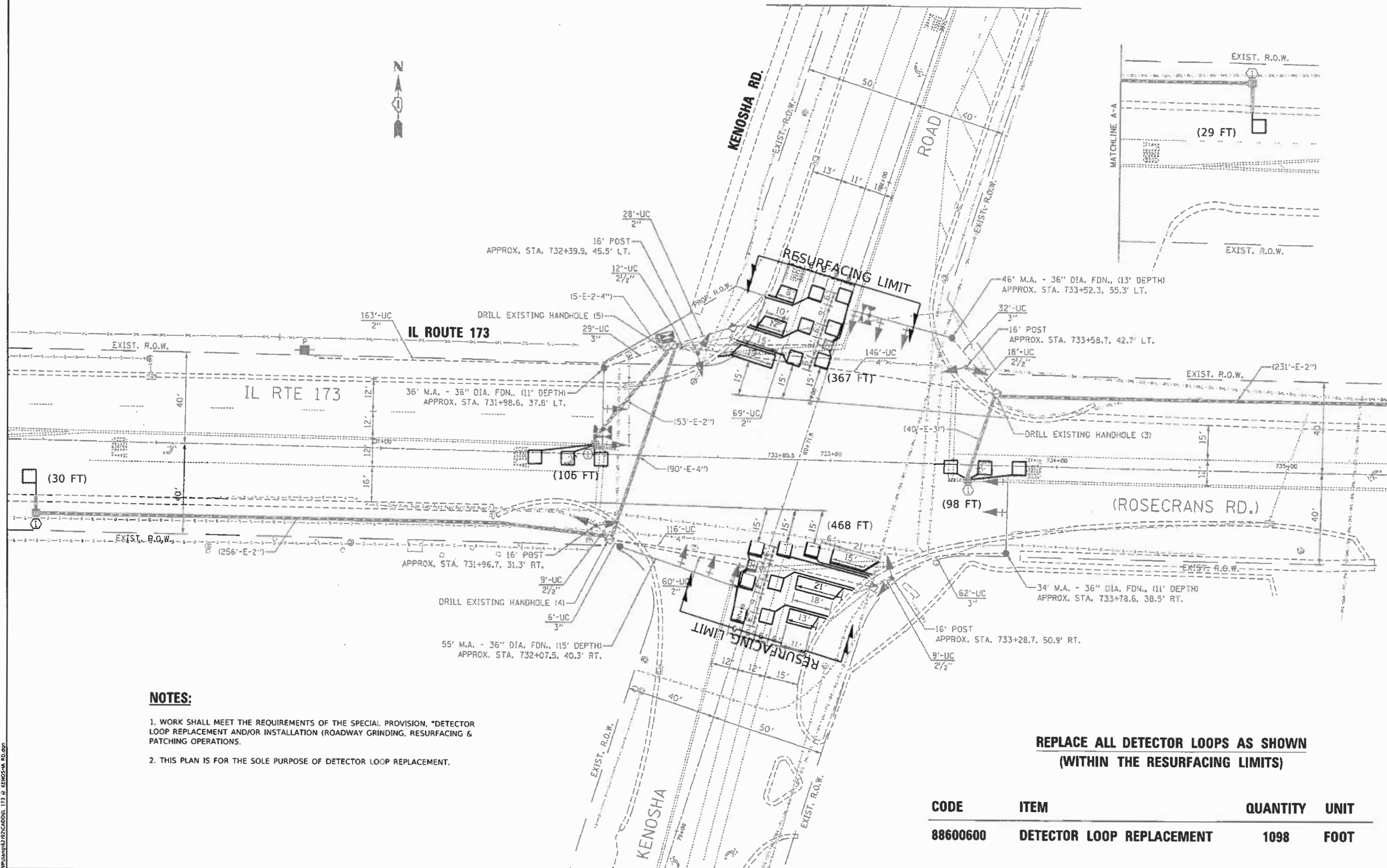
**DETECTOR LOOP REPLACEMENT PLAN
IL ROUTE 173 AT LEWIS AVE.**

F.A.P. RATE.	SECTION	COUNTY	TOTAL SHEETS	SHEET NO.
	2019-094-RS-SW6SR	LAKE	30	16
CONTRACT NO. 62J92				
ILLINOIS FED. AID PROJECT				

SCALE: 1"=20' SHEET OF SHEETS STA. TO STA.

M00F1 - Default
 FILE NAME: S:\P\19094\62J92\CADD\IL 173 @ LEWIS AVE.dgn

USER NAME = ilang	DESIGNED - CJ	REVISED -
	DRAWN - CJ	REVISED -
PLOT SCALE = 40,0000' / in.	CHECKED - LP	REVISED -
PLOT DATE = 2/5/2020	DATE - 2/4/2020	REVISED -



NOTES:

1. WORK SHALL MEET THE REQUIREMENTS OF THE SPECIAL PROVISION, "DETECTOR LOOP REPLACEMENT AND/OR INSTALLATION (ROADWAY GRINDING, RESURFACING & PATCHING OPERATIONS).
2. THIS PLAN IS FOR THE SOLE PURPOSE OF DETECTOR LOOP REPLACEMENT.

**REPLACE ALL DETECTOR LOOPS AS SHOWN
(WITHIN THE RESURFACING LIMITS)**

CODE	ITEM	QUANTITY	UNIT
88600600	DETECTOR LOOP REPLACEMENT	1098	FOOT

MODEL: Refour
 FILE NAME: E:\p\plans\173\173CAD.DWG
 2/5/2020 10:54:18 AM

USER NAME = jlangc	DESIGNED - CJ	REVISED -
PLOT SCALE = 40.0000' / 1"	DRAWN - CJ	REVISED -
PLOT DATE = 2/5/2020	CHECKED - LP	REVISED -
	DATE - 2/4/2020	REVISED -

**STATE OF ILLINOIS
DEPARTMENT OF TRANSPORTATION**

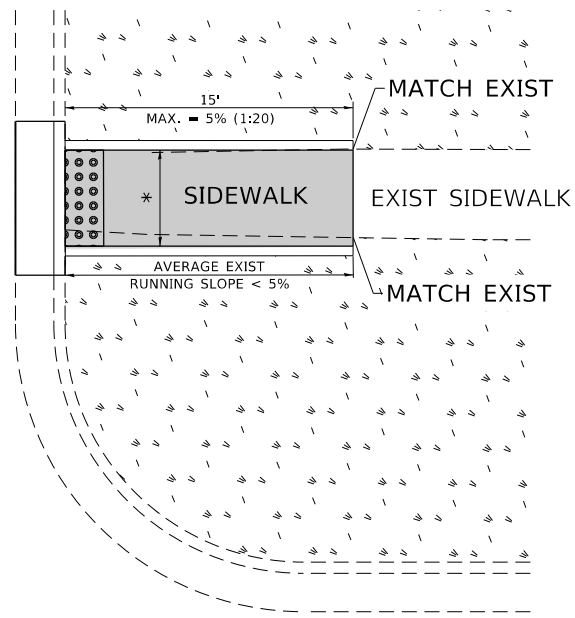
**DETECTOR LOOP REPLACEMENT PLAN
IL ROUTE 173 AT KENOSHA RD.**

SCALE: 1"=20' SHEET OF SHEETS STA. TO STA.

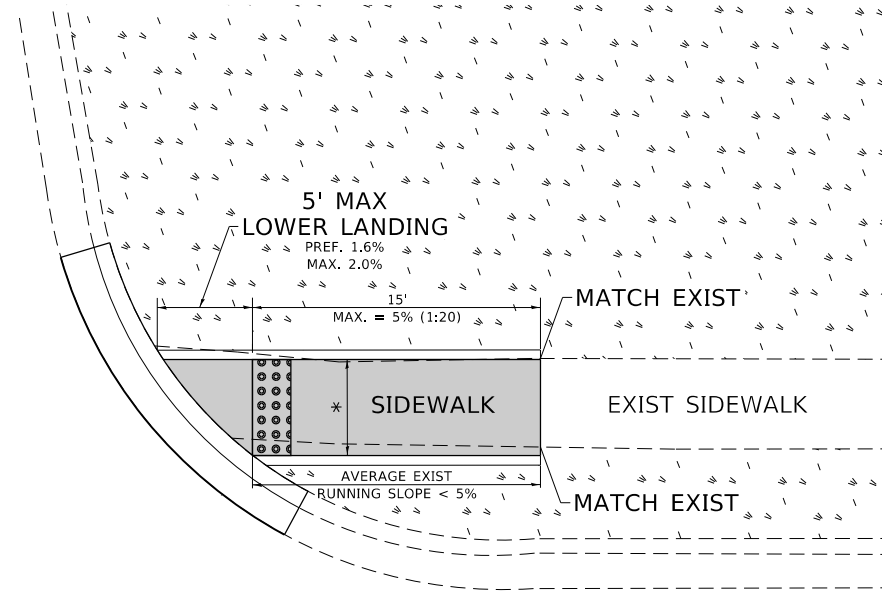
F.A.P. RTE.	SECTION	COUNTY	TOTAL SHEETS	SHEET NO.
	2019-094-R5-SW6SR	LAKE	30	17
CONTRACT NO. 62192			ILLINOIS FFD. AID PROJECT	

ADA DETAIL FOR SINGLE PERPENDICULAR CURB RAMPS W/ EXIST. 5% OR LESS RUN. SLOPE

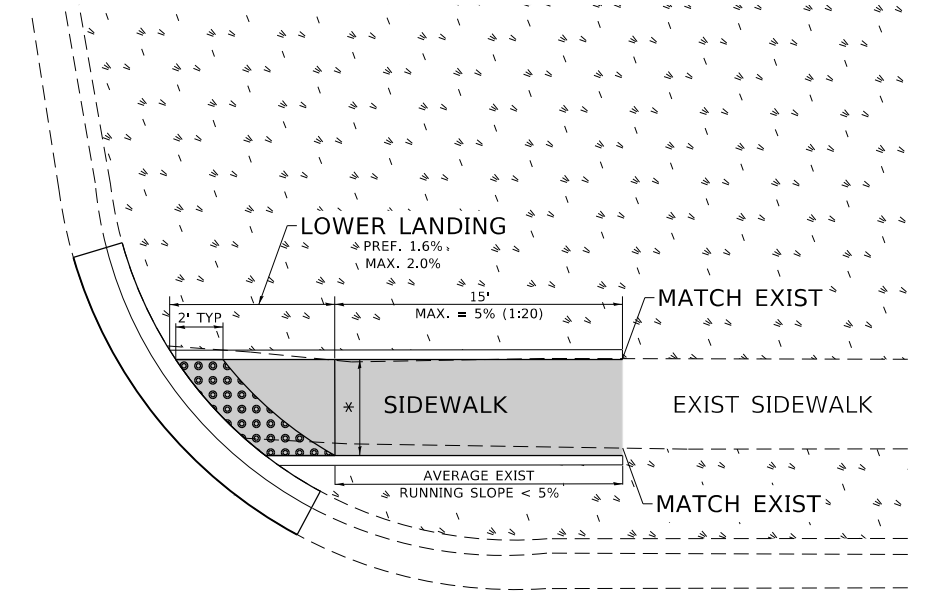
PD-01A



PD-01B



PD-01C



LEGEND

- EXIST. GRASS
- PROPOSED SIDEWALK
- DETECTABLE WARNINGS
- PROPOSED SIDE CURB

CONSTRUCTION NOTES:

- 1) ALL CROSS SLOPES ARE PREFERRED 1.6% (1:64), MAXIMUM 2% (1:50) EXCEPT WHEN TRANSITIONING TO EXISTING SIDEWALK
- * MATCH EXISTING SIDEWALK WIDTH

MODEL: Default
FILE: h:\mhc\p\pub\baronm\dat\illinois.gov\RW\DOT\Documents\DOT_Offices\Draft\1-Projects\127020\Cadd\Drawings\Design\DES-01.dgn

USER NAME = Daasia	DESIGNED -	REVISED -
	DRAWN - R. LEDEZMA	REVISED -
PLOT SCALE = 100.0000' / in.	CHECKED -	REVISED -
PLOT DATE = 3/26/2020	DATE - 10/02/2019	REVISED -

**STATE OF ILLINOIS
DEPARTMENT OF TRANSPORTATION**

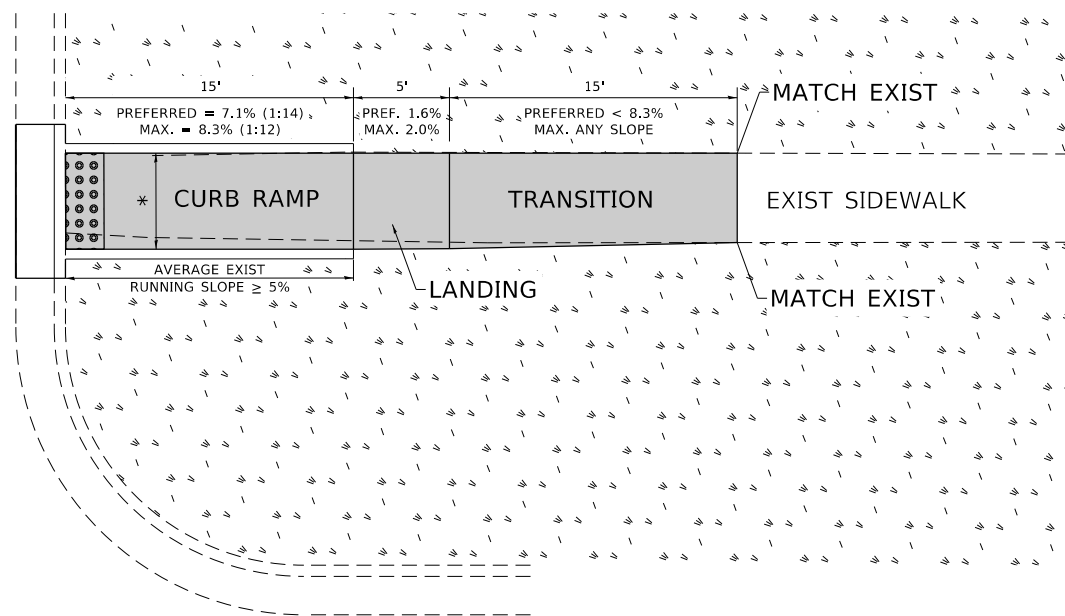
**PROJECT DETAIL FOR SINGLE PERPENDICULAR CURB RAMPS
(PD-01)**

SCALE: NONE SHEET OF SHEETS STA. TO STA.

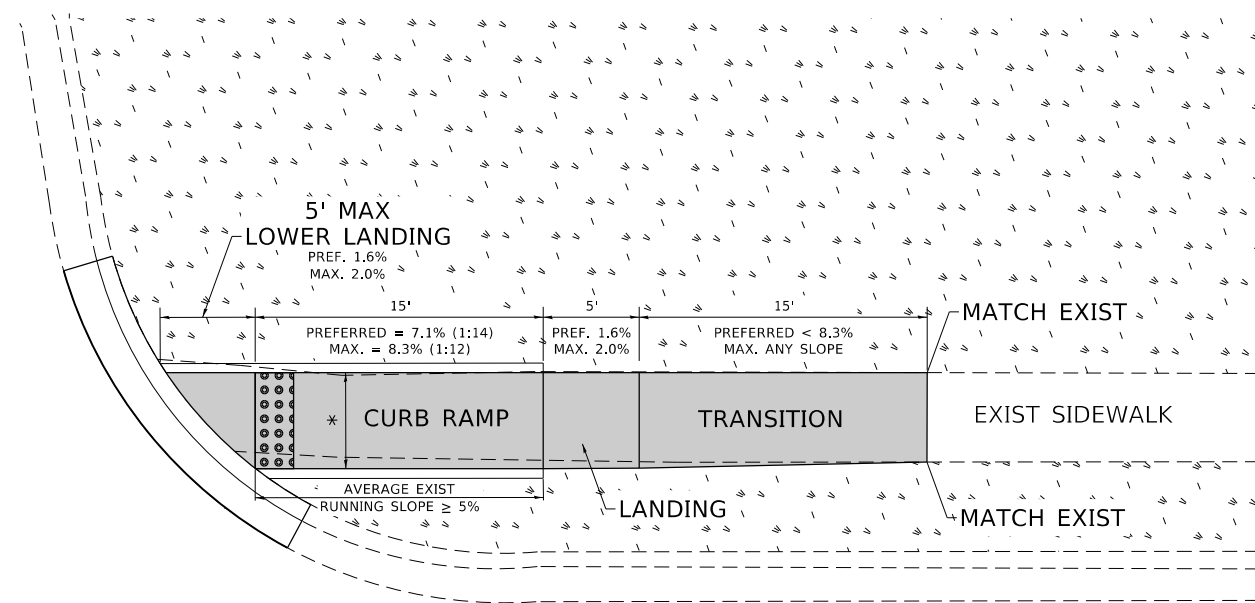
F.A.P. RTE.	SECTION	COUNTY	TOTAL SHEETS	SHEET NO.
303	2019-094-R5-SW&SR	LAKE	30	18
PD-01		CONTRACT NO. 62J92		
		ILLINOIS FED. AID PROJECT		

ADA DETAIL FOR SINGLE PERPENDICULAR CURB RAMPS W/ EXIST. 5% OR GREATER RUN. SLOPE

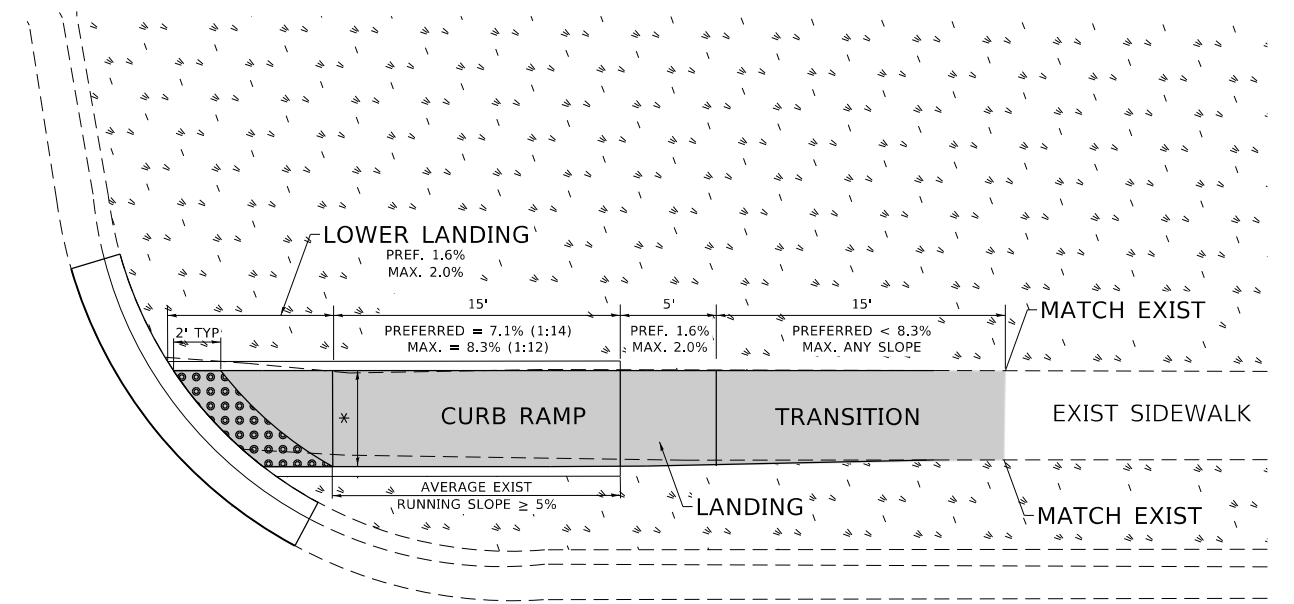
PD-02A



PD-02B



PD-02C



LEGEND

- EXIST. GRASS
- PROPOSED SIDE CURB
- PROPOSED SIDEWALK
- DETECTABLE WARNINGS

CONSTRUCTION NOTES:

- 1) ALL CROSS SLOPES ARE PREFERRED 1.6% (1:64), MAXIMUM 2% (1:50) EXCEPT WHEN TRANSITIONING TO EXISTING SIDEWALK
- * MATCH EXISTING SIDEWALK WIDTH

MODEL: Default
FILE: \\harris\pub\baronon.dwg
PROJECT: 127020\CD\DATA\Design\DRS45.dwg

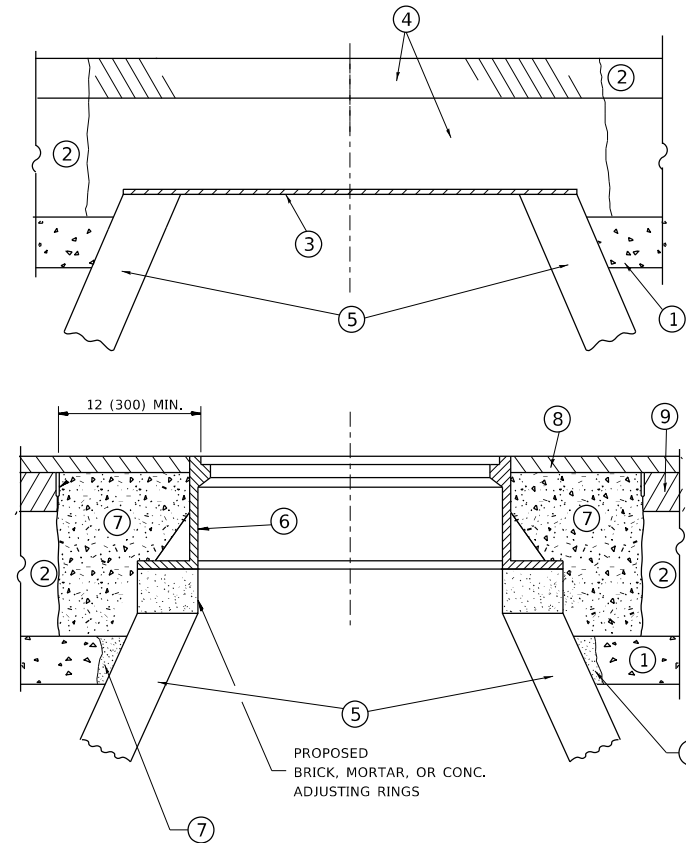
USER NAME = Daasia	DESIGNED -	REVISED -
PLOT SCALE = 100.0000' / in.	DRAWN - R. LEDEZMA	REVISED -
PLOT DATE = 3/26/2020	CHECKED -	REVISED -
	DATE - 10/02/2019	REVISED -

**STATE OF ILLINOIS
DEPARTMENT OF TRANSPORTATION**

**PROJECT DETAIL FOR SINGLE PERPENDICULAR CURB RAMPS
(PD-02)**

SCALE: NONE SHEET OF SHEETS STA. TO STA.

F.A.P. RTE.	SECTION	COUNTY	TOTAL SHEETS	SHEET NO.
303	2019-094-R5-SW&SR	LAKE	30	19
PD-02		CONTRACT NO. 62J92		
ILLINOIS		FED. AID PROJECT		



CONSTRUCTION PROCEDURES

STAGE 1 (BEFORE PAVEMENT MILLING)

- A) REMOVE A MINIMUM OF 12 (300) OF THE PAVEMENT FROM AROUND THE STRUCTURE.
- B) REMOVE THE EXISTING FRAME AND LID FROM THE STRUCTURE.
- C) COVER THE STRUCTURE OPENING WITH A 36 (900) DIAMETER METAL PLATE.
- D) BACKFILL WITH CRUSHED STONE AND A MINIMUM 1½ (40) THICK HMA SURFACE MIX APPROVED BY THE ENGINEER.

STAGE 2 (AFTER PAVEMENT MILLING)

- A) REMOVE THE HMA SURFACE MIX AND CRUSHED STONE.
- B) INSTALL THE FRAME AND LID; ADJUST THE FRAME TO ITS FINAL SURFACE ELEVATION.
- C) THE SURROUNDING SPACE SHALL BE FILLED WITH CLASS PP-1 * CONCRETE TO THE ELEVATION OF THE SURFACE OF THE EXISTING BASE COURSE OR THE BINDER COURSE.

* UNLESS OTHERWISE SPECIFIED IN THE PLANS.

THE PROCEDURE EXPLAINED ABOVE SHALL CONFORM TO THE APPLICABLE PORTIONS OF SECTIONS 353, 406, 602, AND 603 OF THE STANDARD SPECIFICATIONS EXCEPT THAT *THE CONTRACTOR SHALL ADJUST THE STRUCTURES TO THE FINISHED PAVEMENT ELEVATION NO MORE THAN 5 CALENDAR DAYS PRIOR TO PLACEMENT OF THE FINAL LIFT OF SURFACE UNLESS APPROVED BY THE ENGINEER."

LEGEND

- ① SUB-BASE GRANULAR MATERIAL
- ⑥ FRAME AND LID (SEE NOTES)
- ② EXISTING PAVEMENT
- ⑦ CLASS PP-1 *CONCRETE
- ③ 36 (900) DIAMETER METAL PLATE
- ⑧ PROPOSED HMA SURFACE COURSE
- ④ PROPOSED CRUSHED STONE AND HMA SURFACE MIX
- ⑨ PROPOSED HMA BINDER COURSE
- ⑤ EXISTING STRUCTURE

LOCATION OF STRUCTURES

THE CONTRACTOR WILL BE REQUIRED TO KEEP A RECORD OF THE LOCATIONS OF THE BURIED STRUCTURES ACCORDING TO THE STATION AND DISTANCE LEFT OR RIGHT OF THE CENTERLINE OF PAVEMENT. UPON COMPLETION OF THE WORK, THE CONTRACTOR WILL DELIVER THE RECORD TO THE ENGINEER.

BASIS OF PAYMENT

REMOVING FRAMES AND LIDS ON DRAINAGE AND UTILITY STRUCTURES IN THE PAVEMENT PRIOR TO MILLING, AND ADJUSTING TO FINAL GRADE PRIOR TO PLACING THE SURFACE COURSE, WILL BE PAID FOR AT THE CONTRACT UNIT PRICE EACH FOR *FRAMES AND LIDS TO BE ADJUSTED (SPECIAL).*

THIS WORK WILL NOT BE PAID FOR WHEN DRAINAGE AND UTILITY STRUCTURES ARE SPECIFIED FOR PAYMENT AS STRUCTURE RECONSTRUCTION.

NEW FRAMES AND LIDS, WHEN SPECIFIED, WILL BE PAID FOR SEPARATELY.

NOTES

EXISTING BROKEN FRAMES AND LIDS SHALL BE REMOVED AND DISPOSED OF BY THE CONTRACTOR AND SHALL BE REPLACED AS DIRECTED BY THE ENGINEER. REPLACEMENT FRAMES AND LIDS WILL BE PAID FOR IN ACCORDANCE WITH ARTICLE 109.04 OF THE STANDARD SPECIFICATIONS UNLESS A SEPARATE PAY ITEM HAS BEEN PROVIDED.

IF THE EXISTING LIDS ARE OPEN, THE FRAME WILL BE ADJUSTED TO THE ELEVATION OF THE MILLED PAVEMENT SURFACE PRIOR TO THE MILLING OPERATION. THE FRAME WILL NOT BE REMOVED AND COVERED BY THE METAL PLATE.

CITY OF CHICAGO CASTINGS ARE THE PROPERTY OF THE CITY AND THE CONTRACTOR SHALL NOTIFY THE CITY FOR REMOVAL AND DISPOSITION OF THE CASTINGS.

THE METAL PLATE USED TO COVER THE STRUCTURE SHALL REMAIN THE PROPERTY OF THE CONTRACTOR.

WHEN STRUCTURES ARE TO BE ADJUSTED OR RECONSTRUCTED, THE LOWERING AND RAISING OF THE FRAMES AND LIDS WILL NOT BE PAID FOR SEPARATELY BUT WILL BE INCLUDED IN THE COST OF THE CORRESPONDING PAY ITEM.

DETAILS FOR FRAMES AND LIDS ADJUSTMENT WITH MILLING

ALL DIMENSIONS ARE IN INCHES (MILLIMETERS) UNLESS OTHERWISE SHOWN

MODEL: Default
FILE: \\hpc\p\pub\hpc\room\dat\illinois.gov\PWIDOT\Documents\IBDOT_Offices\Illin\det_1\Projects\ID127020\CaddData\Design\DESIGN.dgn

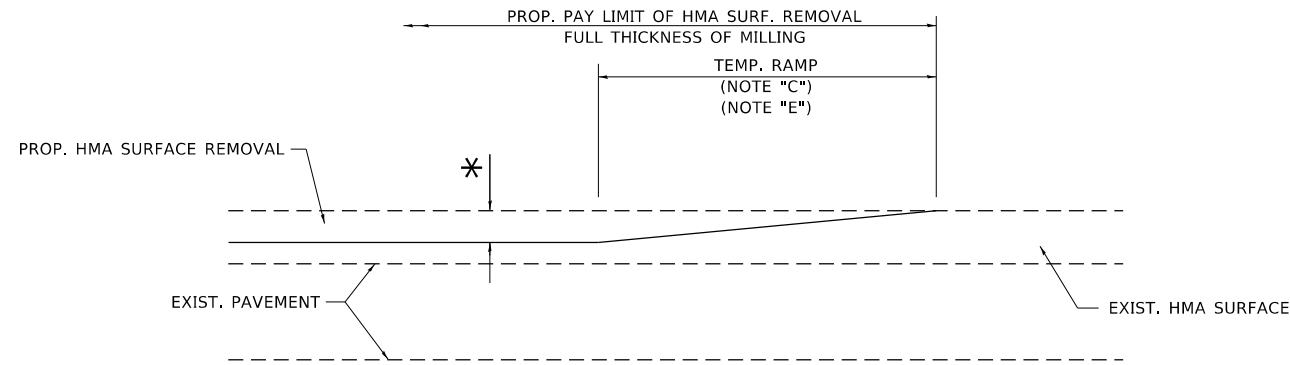
USER NAME = Daasia	DESIGNED - R. SHAH	REVISED - R. WEDEMAN 05-14-04
	DRAWN -	REVISED - R. BORO 01-01-07
PLOT SCALE = 100.0000' / in.	CHECKED -	REVISED - R. BORO 03-09-11
PLOT DATE = 3/26/2020	DATE - 10-25-94	REVISED - R. BORO 12-06-11

**STATE OF ILLINOIS
DEPARTMENT OF TRANSPORTATION**

**DETAILS FOR
FRAMES AND LIDS ADJUSTMENT WITH MILLING**

SCALE: NONE SHEET 1 OF 1 SHEETS STA. TO STA.

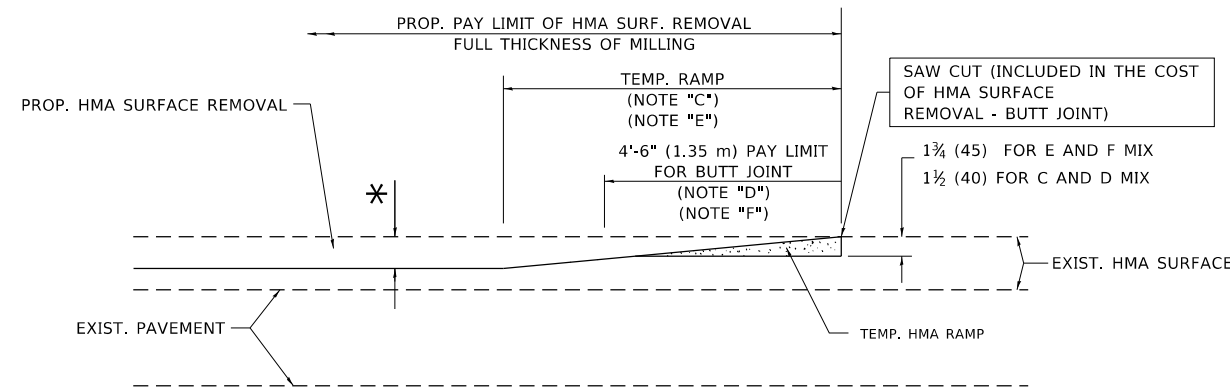
F.A.P. RTE.	SECTION	COUNTY	TOTAL SHEETS	SHEET NO.
303	2019-094-R5-SW&SR	LAKE	30	21
BD600-03 (BD-8)		CONTRACT NO. 62J92		
ILLINOIS		FED. AID PROJECT		



MILLED TEMPORARY RAMP

(FOR BUTT JOINT AND HMA TAPER SEE DETAIL BELOW)

OPTION 1

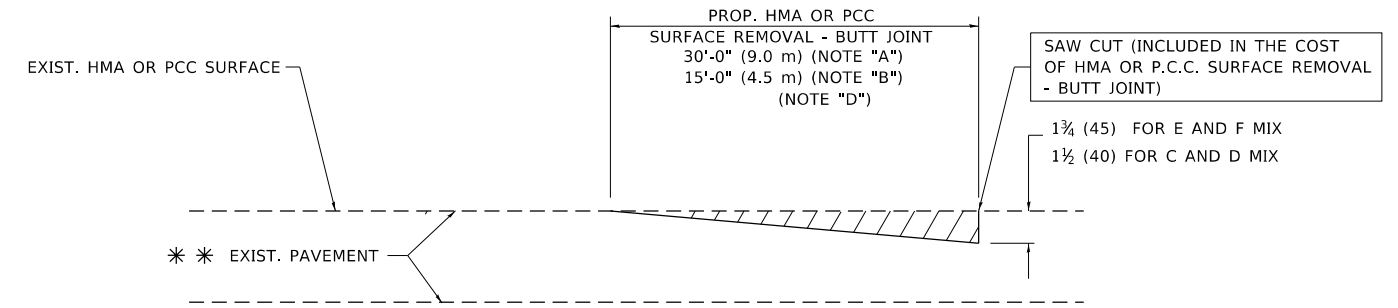


HMA CONSTRUCTED TEMPORARY RAMP

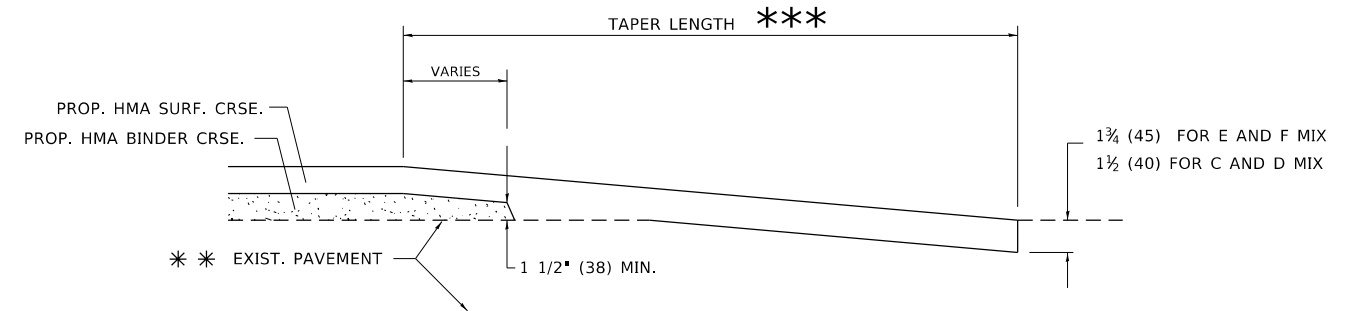
(FOR BUTT JOINT AND HMA TAPER SEE DETAIL BELOW)

OPTION 2

TYPICAL TEMPORARY RAMP



BUTT JOINT DETAIL



HMA TAPER DETAIL

TYPICAL BUTT JOINT AND HMA TAPER FOR RESURFACING ONLY

*** PC CONCRETE, HMA OR HMA RESURFACED PAVEMENT.

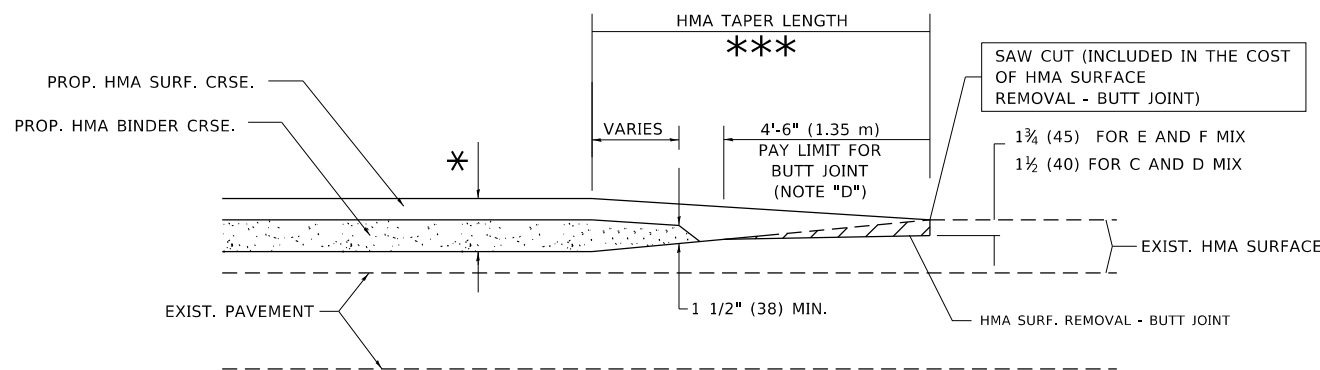
NOTES

- A. MAINLINE ROADWAYS AND MAJOR SIDE ROADS.
- B. MINOR SIDE ROADS.
- C. THE TEMP. RAMP SHALL BE CONSTRUCTED IMMEDIATELY UPON REMOVAL OF THE EXISTING HMA SURFACE.
- D. THE BUTT JOINT SHALL BE CONSTRUCTED IMMEDIATELY PRIOR TO PLACING THE PROPOSED HMA COURSES.
- E. TAPER THE TEMP. RAMP AT A RATE OF 3'-0" (900 mm) PER 1 INCH (25 mm) OF MILLING THICKNESS.
- F. INSTALLATION AND REMOVAL OF THE 4'-6" (1.35 m) TEMP. RAMP IS INCLUDED IN COST OF HMA SURFACE REMOVAL - BUTT JOINT.
* SEE TYPICAL SECTIONS FOR MILLING THICKNESS.
- G. SEE ARTICLE 406.08 AND 406.14 OF THE STANDARD SPECIFICATIONS FOR "HMA AND/OR PCC SURFACE REMOVAL, BUTT JOINT".
*** 20'-0" (6.1 m) PER 1 (25) RESURFACING (NOTE "A")
10'-0" (3.0 m) PER 1 (25) RESURFACING (NOTE "B")

BASIS OF PAYMENT

THE BUTT JOINT WILL BE PAID FOR AT THE CONTRACT UNIT PRICE PER SQUARE YARD (SQUARE METER) FOR "HOT-MIX ASPHALT SURFACE REMOVAL - BUTT JOINT" OR FOR "PORTLAND CEMENT CONCRETE SURFACE REMOVAL - BUTT JOINT".

ALL DIMENSIONS ARE IN INCHES (MILLIMETERS) UNLESS OTHERWISE SHOWN.



BUTT JOINT AND HMA TAPER

TYPICAL BUTT JOINT AND HMA TAPER FOR MILLING AND RESURFACING

STATE OF ILLINOIS
DEPARTMENT OF TRANSPORTATION

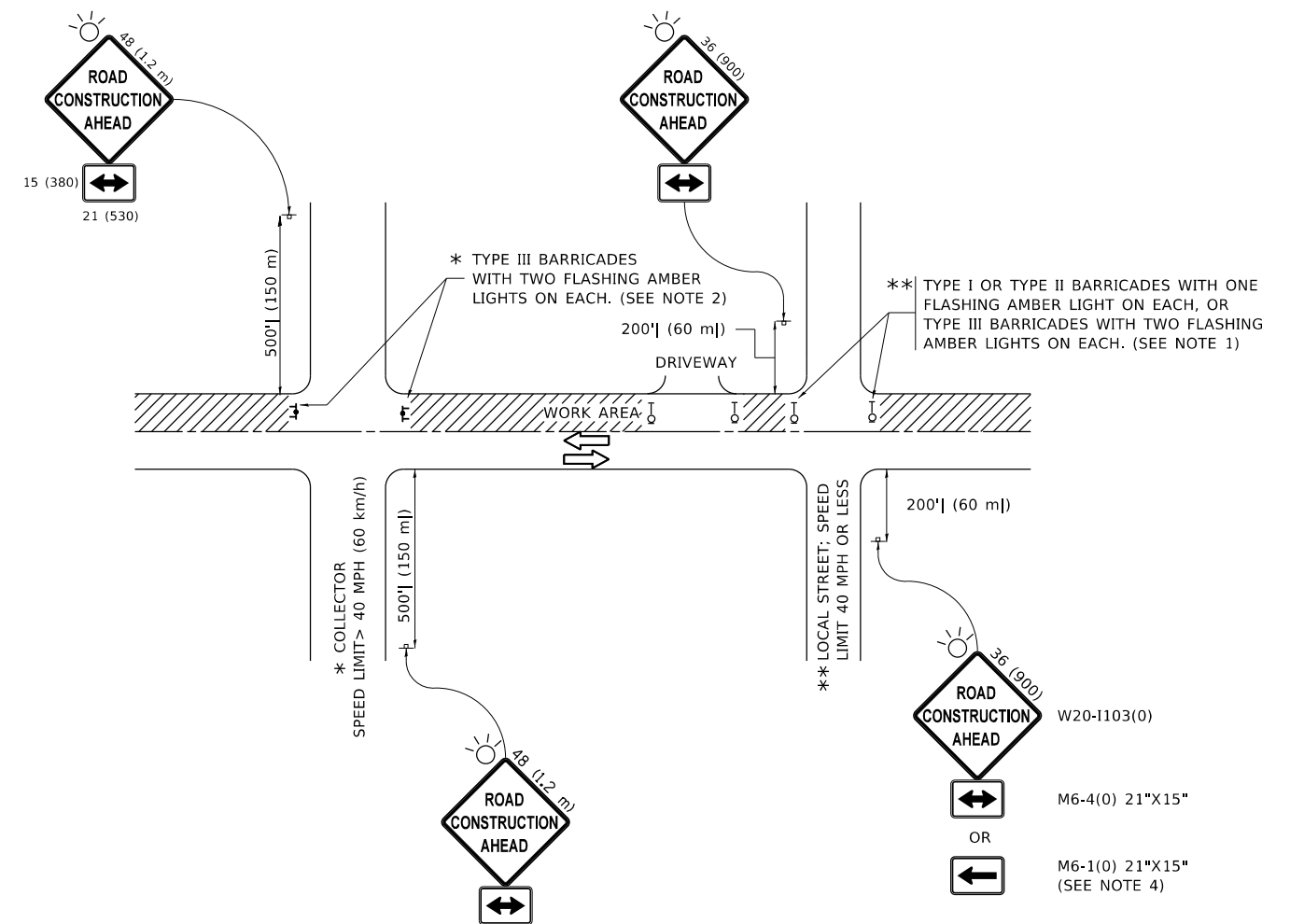
BUTT JOINT AND
HMA TAPER DETAILS

SCALE: NONE SHEET 1 OF 1 SHEETS STA. TO STA.

F.A.P. RTE.	SECTION	COUNTY	TOTAL SHEETS	SHEET NO.
303	2019-094-R5-SW&SR	LAKE	30	23
BD400-05 BD32			CONTRACT NO. 62J92	
ILLINOIS FED. AID PROJECT				

MODEL: Default
 FILE: \\hpc101\pub\hpc\room.d\all\ink.spc\PROJECTS\DOT Documents\DOT Office\Bldg\1\Projects\127020\CADD\Bldg\Design\Bldg\Bldg.dgn

USER NAME = Daasla	DESIGNED - M. DE YONG	REVISED - R. SHAH 10-25-94
PLOT SCALE = 100.0000' / in.	DRAWN -	REVISED - A. ABBAS 03-21-97
PLOT DATE = 3/26/2020	CHECKED -	REVISED - M. GOMEZ 04-06-01
	DATE - 06-13-90	REVISED - R.BORO 01-01-07



NOTES:

1. SIDE ROAD WITH A SPEED LIMIT OF 40 MPH (60 km/h) OR LESS AS SHOWN ON THE DRAWING AND AS DIRECTED BY THE ENGINEER:
 - a) ONE "ROAD CONSTRUCTION AHEAD" SIGN 36 x 36 (900x900) WITH A FLASHER MOUNTED ON IT APPROXIMATELY 200' (60 m) IN ADVANCE OF THE MAIN ROUTE.
 - b) THE CLOSED PORTION OF THE MAIN ROUTE SHALL BE PROTECTED BY BLOCKING WITH TYPE I, TYPE II OR TYPE III BARRICADES, 1/3 OF THE CROSS SECTION OF THE CLOSED PORTION.
2. SIDE ROAD WITH A SPEED LIMIT GREATER THAN 40 MPH (60 km/h) AS SHOWN ON THE DRAWING AND AS DIRECTED BY THE ENGINEER:
 - a) ONE "ROAD CONSTRUCTION AHEAD" SIGN 48 x 48 (1.2 m x 1.2 m) WITH A FLASHER MOUNTED ON IT APPROXIMATELY 500' (150 m) IN ADVANCE OF THE MAIN ROUTE.
 - b) BLOCKING WITH TYPE III BARRICADES, 1/2 OF THE CROSS SECTION OF THE CLOSED PORTION.
3. CONES MAY BE SUBSTITUTED FOR BARRICADES OR DRUMS AT HALF THE SPACING DURING DAY OPERATIONS. CONES SHALL BE A MINIMUM OF 28 (710) IN HEIGHT.
4. SIGNING AND THE WORK ZONE, A SINGLE HEADED ARROW (M6-1) SHALL BE USED IN LIEU OF THE DOUBLE HEADED ARROW (M6-4).
5. WHEN WORK IS BEING PERFORMED ON A SIDE ROAD OR DRIVEWAY, FOLLOW THE APPLICABLE STANDARD(S). THE DIRECTIONAL ARROW (M6-1 OR M6-4) SHALL BE COVERED OR REMOVED WHEN NO LONGER CONSISTENT WITH THE TRAFFIC CONTROL SET-UP.
6. ADVANCE WARNING SIGNS ARE TO BE OMITTED ON DRIVEWAYS UNLESS OTHERWISE SPECIFIED IN THE PLANS OR BY THE ENGINEER.
7. THE TRAFFIC CONTROL AND PROTECTION FOR SIDE ROADS, INTERSECTIONS, AND DRIVEWAYS SHALL BE INCLUDED IN THE COST OF SPECIFIED TRAFFIC CONTROL STANDARDS OR ITEMS.

All dimensions are in inches (millimeters) unless otherwise shown.

MODEL: Default
 FILE: \\nas101.psu.edu\pub\room\data\illinois.gov\PWIDOT\Documents\DOT_Offices\Director - J\Projects\1272020\CADD\Drawings\Design\DESIGN.dgn

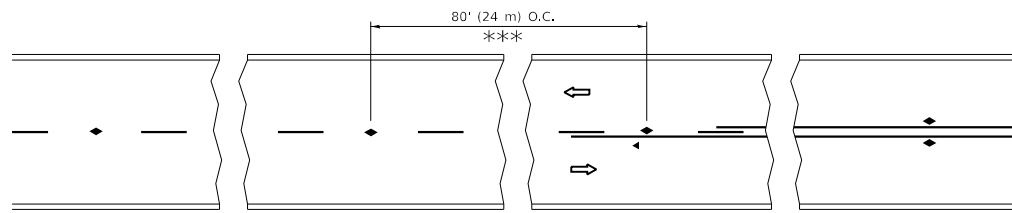
USER NAME = Daasia	DESIGNED - L.H.A.	REVISED - A. HOUSEH 10-15-96
	DRAWN -	REVISED - T. RAMMACHER 01-06-00
PLOT SCALE = 100.0000' / in.	CHECKED -	REVISED - A. SCHUETZE 07-01-13
PLOT DATE = 3/26/2020	DATE - 06-89	REVISED - A. SCHUETZE 09-15-16

**STATE OF ILLINOIS
DEPARTMENT OF TRANSPORTATION**

**TRAFFIC CONTROL AND PROTECTION FOR
SIDE ROADS, INTERSECTIONS, AND DRIVEWAYS**

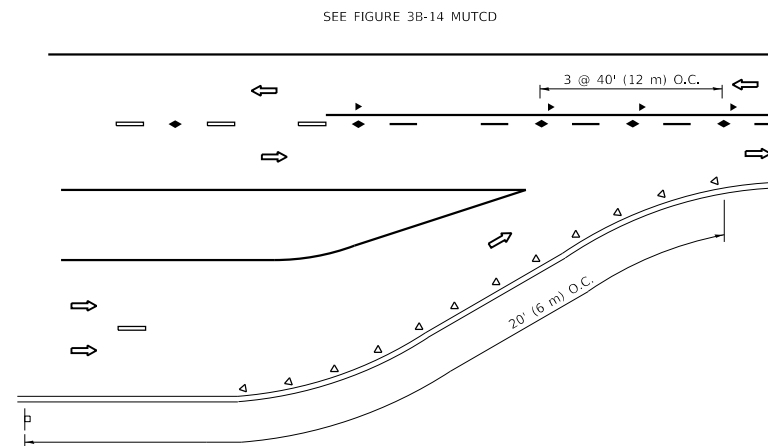
SCALE: NONE SHEET 1 OF 1 SHEETS STA. TO STA.

F.A.P. RTE.	SECTION	COUNTY	TOTAL SHEETS	SHEET NO.
303	2019-094-R5-SW&SR	LAKE	30	24
TC-10			CONTRACT NO. 62J92	
ILLINOIS FED. AID PROJECT				

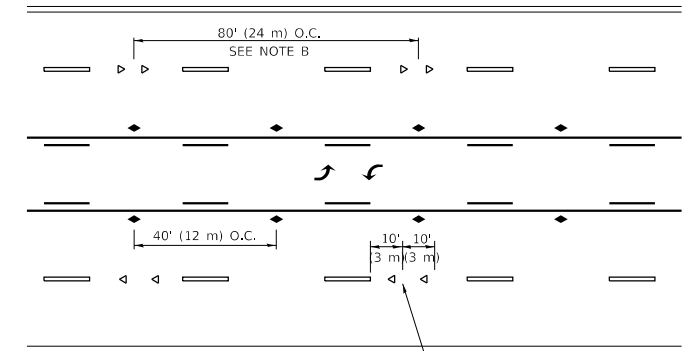


*** REDUCE TO 40' (12 m) O.C. ON CURVES WITH POSTED OR ADVISORY SPEED 45 M.P.H. (70 km/h) OR LESS.

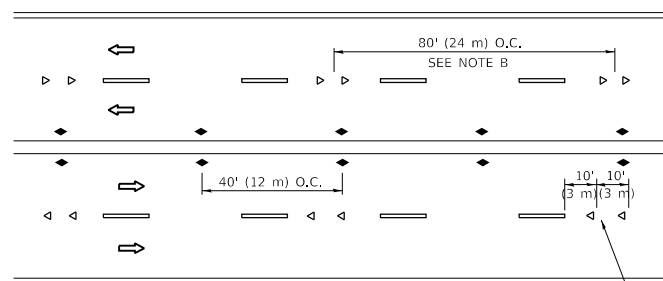
TWO-LANE/TWO-WAY



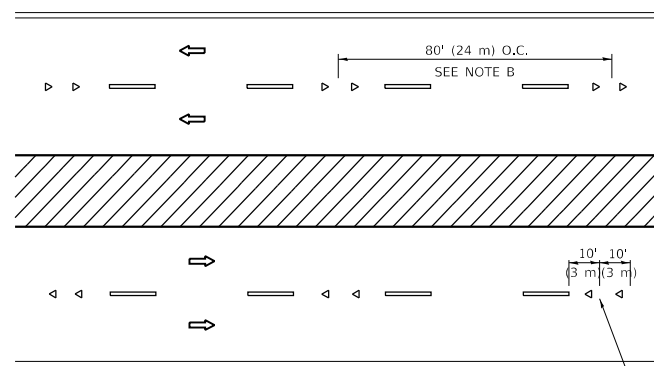
LANE REDUCTION TRANSITION



TWO-WAY LEFT TURN



MULTI-LANE/UNDIVIDED



MULTI-LANE/DIVIDED

GENERAL NOTES

1. MARKERS USED WITH DASHED LINES SHALL BE CENTERED IN THE GAP BETWEEN SEGMENTS.
2. MARKERS USED ADJACENT TO SOLID LINES SHALL BE OFFSET 2 TO 3 (50 TO 75) TOWARD TRAFFIC AS SHOWN.
3. MARKERS THROUGH TANGENTS LESS THAN 500' (150 m) IN LENGTH BETWEEN CURVES SHALL BE INSTALLED AT THE LESSER OF THE TWO CURVE SPACINGS.
4. MARKERS ARE TO BE USED ADJACENT TO BOTH SOLID WHITE LINES IN DUAL LEFT TURN LANES

SYMBOLS

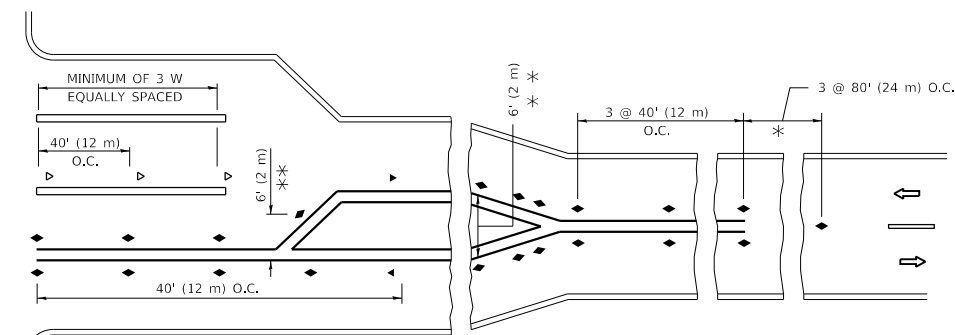
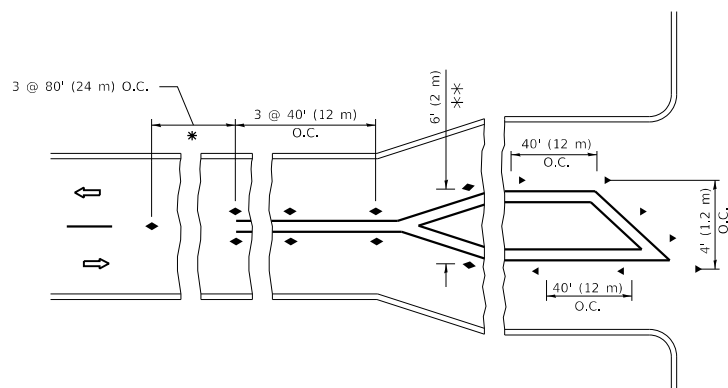
- YELLOW STRIPE
- WHITE STRIPE
- ◀ ONE-WAY AMBER MARKER
- ◀ ONE-WAY CRYSTAL MARKER (W/O)
- ◆ TWO-WAY AMBER MARKER

LANE MARKER NOTES

- A. USE DOUBLE LANE LINE MARKERS SPACED AS SHOWN.
- B. REDUCE TO 40' (12 m) O.C. ON CURVES WHERE ADVISORY SPEEDS ARE 10 M.P.H. (20 km/h) LOWER THAN POSTED SPEEDS.

DESIGN NOTES

1. DOUBLE LANE LINE MARKERS SHALL BE USED UNLESS SPECIFIED OTHERWISE.
2. EXCEPT AS SHOWN ON THE LANE REDUCTION TRANSITION AND FREEWAY EXIT RAMP DETAIL, MARKERS ARE NOT TO BE SPECIFIED ON RIGHT EDGE LINES.
3. THE EXACT MARKER LIMITS, SPACING, AND COLOR SHALL BE INCLUDED IN THE PLANS WHEN STANDARD SPECIFICATIONS ARE NOT BEING USED.
4. MARKERS SHOULD NOT BE USED ALONGSIDE CURBS EXCEPT FOR EXTREMELY SHORT SECTIONS OF CURBS WHERE NOT MORE THAN TWO MARKERS WOULD BE INVOLVED.



* SEE TWO-LANE/TWO-WAY WHERE MARKERS CONTINUE
 ** WHERE THE MEDIAN WIDTH IS 6' (2 m) OR LESS USE TWO-WAY MARKERS.

TURN LANES

All dimensions are in inches (millimeters) unless otherwise shown.

MODEL: Default
 FILE: Markers_Plan.dwg
 PROJECT: 172020-CADDData\Design\Design.dwg

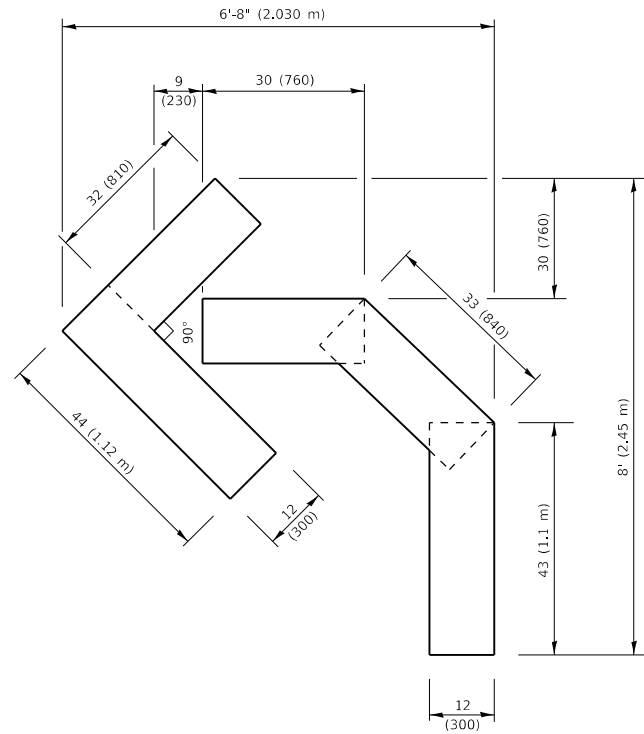
USER NAME = Daasia	DESIGNED -	REVISED - T. RAMMACHER 03-12-99
	DRAWN -	REVISED - T. RAMMACHER 01-06-00
PLOT SCALE = 100,0000' / in.	CHECKED -	REVISED - C. JUCIUS 09-09-09
PLOT DATE = 3/26/2020	DATE -	REVISED - C. JUCIUS 07-01-13

**STATE OF ILLINOIS
 DEPARTMENT OF TRANSPORTATION**

**TYPICAL APPLICATIONS
 RAISED REFLECTIVE PAVEMENT MARKERS (SNOW-PLOW RESISTANT)**

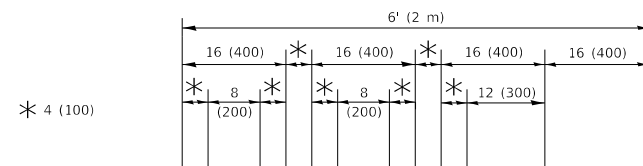
SCALE: NONE SHEET 1 OF 1 SHEETS STA. TO STA.

F.A.P. RTE.	SECTION	COUNTY	TOTAL SHEETS	SHEET NO.
303	2019-094-R5-SW&SR	LAKE	30	25
TC-11			CONTRACT NO. 62J92	
		ILLINOIS	FED. AID PROJECT	



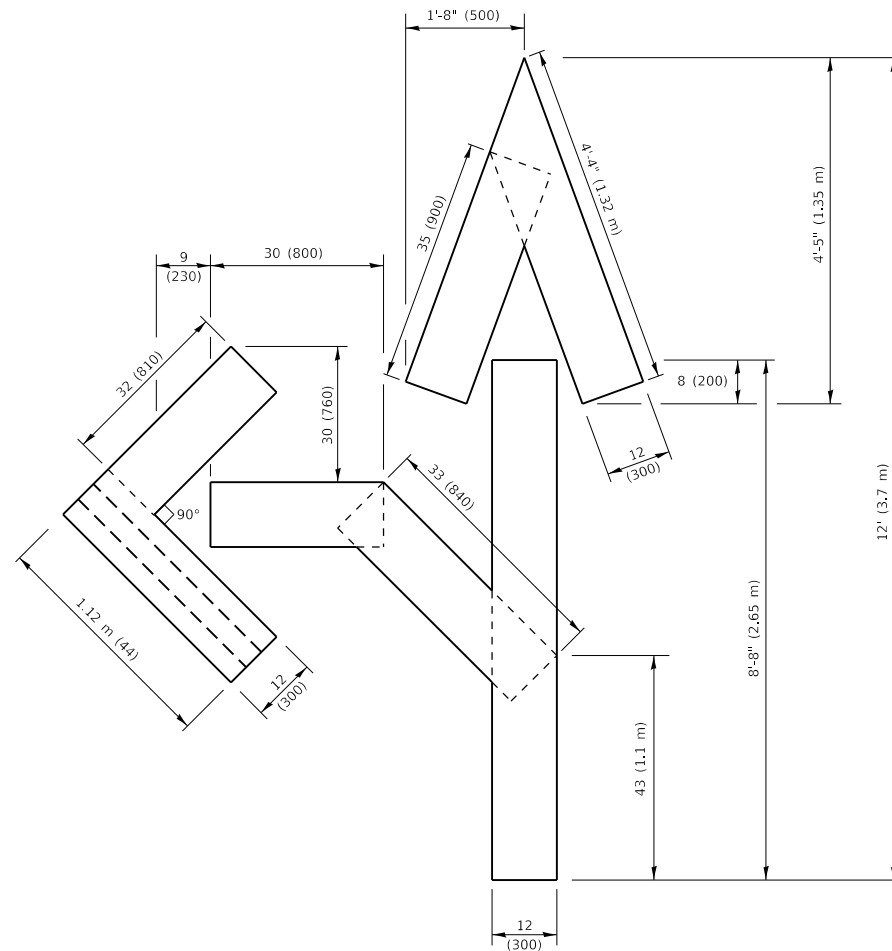
QUANTITY

4 (100) LINE = 45.5 ft. (13.9 m)
15.2 sq. ft. (1.41 sq. m)



QUANTITY

4 (100) LINE = 64.1 ft. (19.5 m)
21.4 sq. ft. (1.99 sq. m)

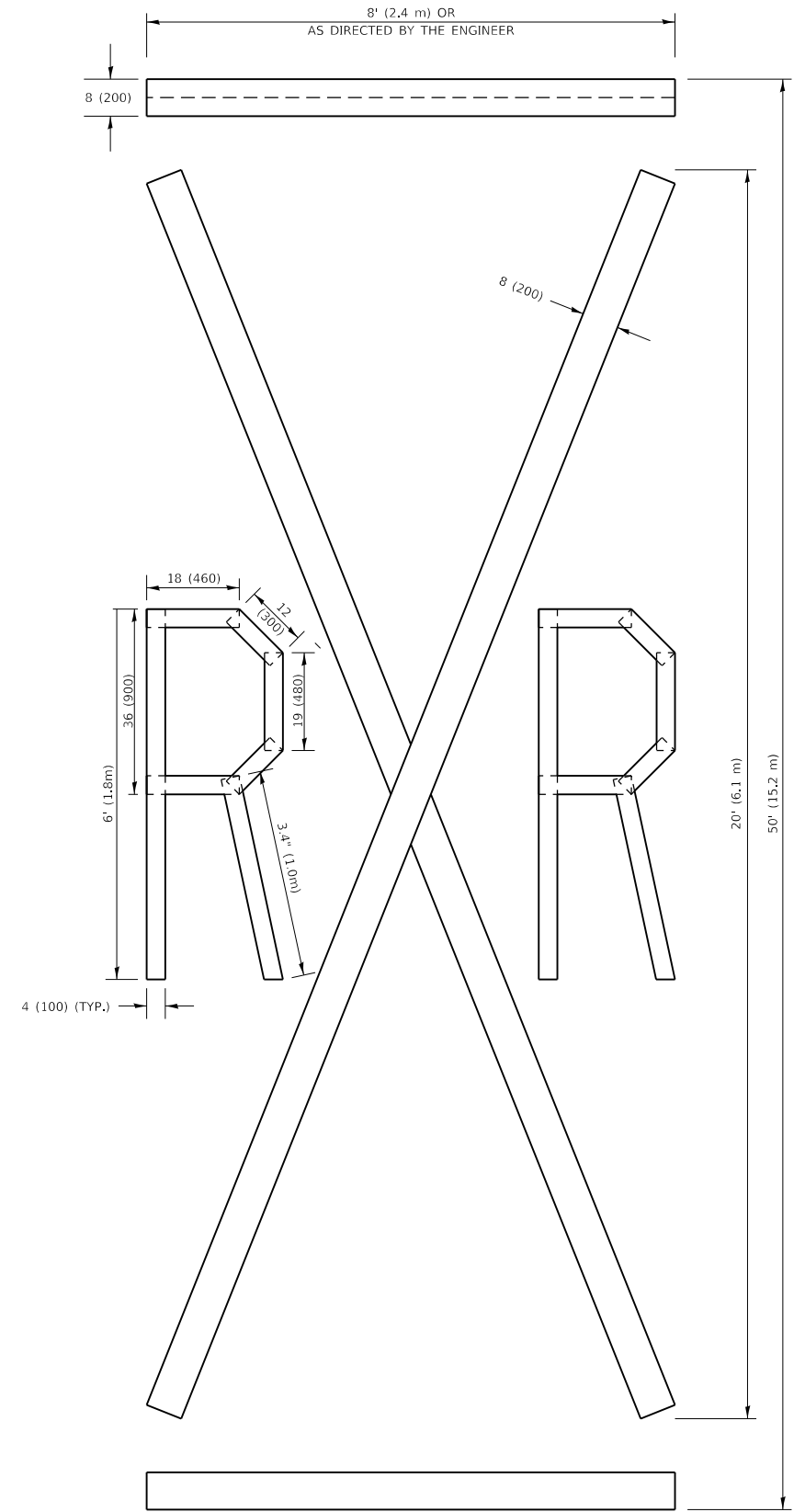


QUANTITY

4 (100) LINE = 82.5 ft. (25.1 m)
27.5 sq. ft. (2.53 sq. m)

NOTE:

ALL QUANTITIES OF PLACEMENT ARE REPRESENTED IN LINEAR FEET OF 4" LINES TO MATCH THE 4" TEMPORARY TAPE PAY ITEM AND REPRESENTS THE TOTAL QUANTITY OF 4" TAPE REQUIRED.



QUANTITY

4 (100) LINE = 225.9 ft. (68.9 m)
75.3 sq. ft. (6.99 sq. m)

All dimensions are in inches (millimeters) unless otherwise shown.

MODEL: Default
FILE NAME: P:\pghbar.com.dwg
PROJECT: 2019-094-R5-SW&SR
DRAWING: TC-16

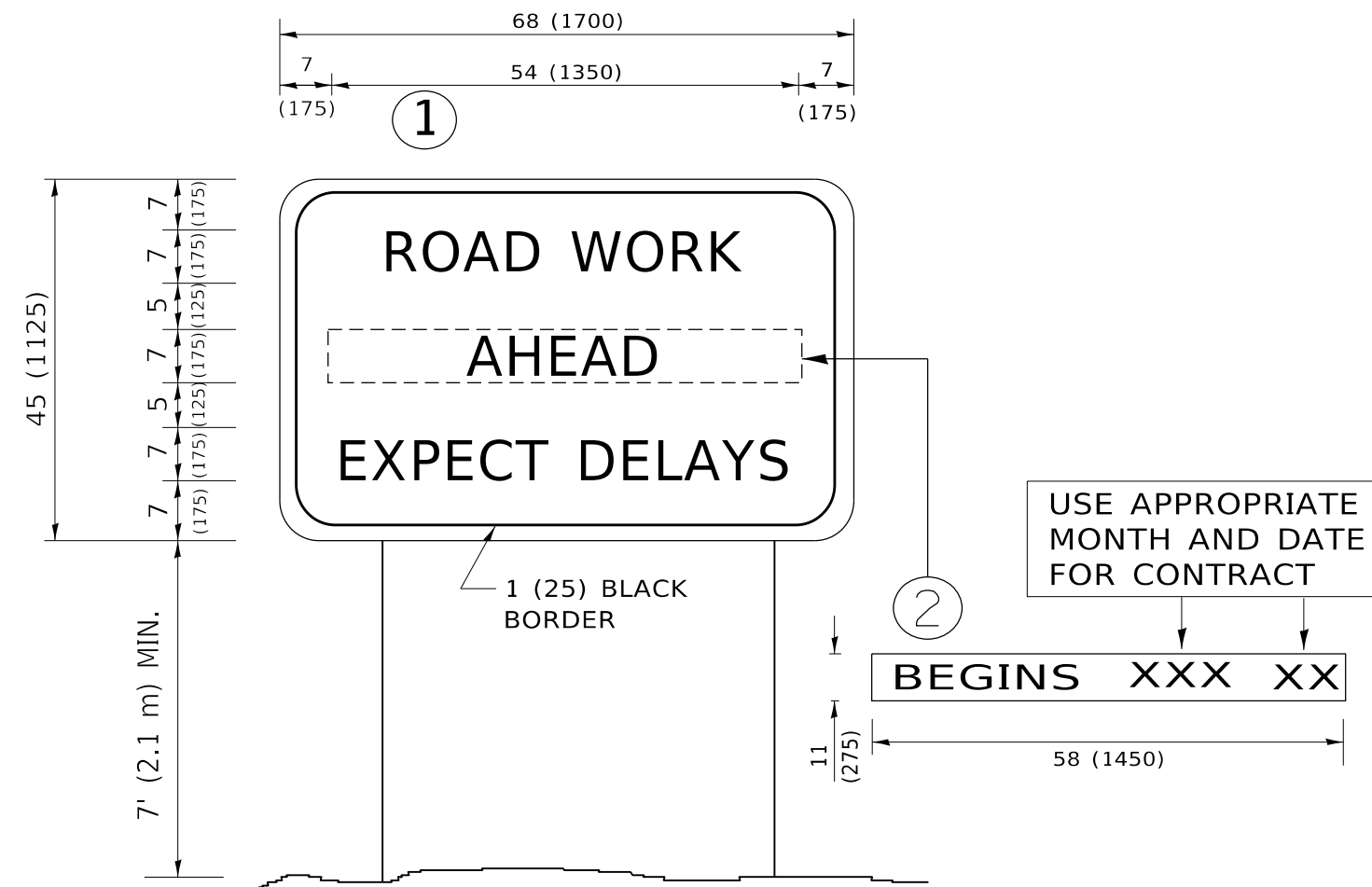
USER NAME = Daasla	DESIGNED -	REVISED - T. RAMMACHER 03-02-98
	DRAWN -	REVISED - E. GOMEZ 08-28-00
PLOT SCALE = 100,0010' / In.	CHECKED -	REVISED - E. GOMEZ 08-28-00
PLOT DATE = 3/26/2020	DATE - 09-18-94	REVISED - A. SCHUETZE 09-15-16

**STATE OF ILLINOIS
DEPARTMENT OF TRANSPORTATION**

SHORT TERM PAVEMENT MARKING LETTERS AND SYMBOLS

SCALE: NONE SHEET 1 OF 1 SHEETS STA. TO STA.

F.A.P. RTE.	SECTION	COUNTY	TOTAL SHEETS	SHEET NO.
303	2019-094-R5-SW&SR	LAKE	30	28
TC-16			CONTRACT NO. 62J92	
ILLINOIS FED. AID PROJECT				



NOTES:

1. USE BLACK LETTERING ON ORANGE BACKGROUND.
2. ERECT SIGNS IN ADVANCE OF THE LOCATION FOR THE "ROAD CONSTRUCTION AHEAD" SIGN AT LOCATIONS AS DIRECTED BY THE ENGINEER.
3. ERECT SIGN ① WITH INSTALLED PANEL ② ONE WEEK PRIOR TO THE START OF CONSTRUCTION.
4. REMOVE PANEL ② SOON AFTER THE START OF CONSTRUCTION.
5. SEE SPECIAL PROVISION FOR "TEMPORARY INFORMATION SIGNING" FOR ADDITIONAL INFORMATION.
6. ONE SIGN ASSEMBLY EQUALS 25.70 SQ. FT. (2.3 SQ. M.)
7. SHALL BE PAID FOR AS TEMPORARY INFORMATION SIGNING.

ALL DIMENSIONS ARE IN INCHES (MILLIMETERS) UNLESS OTHERWISE SHOWN.

MODEL: Default
 FILE: \\nas101.pw.state.il.us\pub\harcourt\dot\Documents\DOT_Offices\lhartec_1\Projects\127020\CADD\Drawings\Design\DRS4.dgn

USER NAME = Daasia	DESIGNED -	REVISED - R. MIRS 09-15-97
	DRAWN -	REVISED - R. MIRS 12-11-97
PLOT SCALE = 100.0000 ' / in.	CHECKED -	REVISED - T. RAMMACHER 02-02-99
PLOT DATE = 3/26/2020	DATE -	REVISED - C. JUCIUS 01-31-07

**STATE OF ILLINOIS
DEPARTMENT OF TRANSPORTATION**

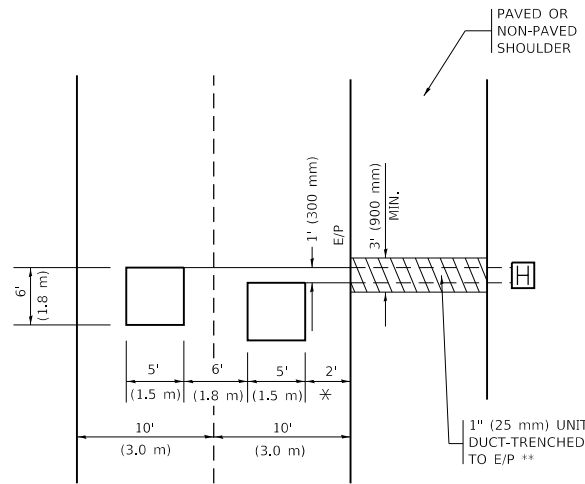
**ARTERIAL ROAD
INFORMATION SIGN**

SCALE: NONE SHEET 1 OF 1 SHEETS STA. TO STA.

F.A.P. RTE.	SECTION	COUNTY	TOTAL SHEETS	SHEET NO.
303	2019-094-R5-SW&SR	LAKE	30	29
TC-22			CONTRACT NO. 62J92	
ILLINOIS FED. AID PROJECT				

LOOPS NEXT TO SHOULDERS

PROVIDE A PAVEMENT REPLACEMENT NOTE WHICH SHOULD EQUAL 3' (900 mm) X WIDTH OF PAVED SHOULDER.

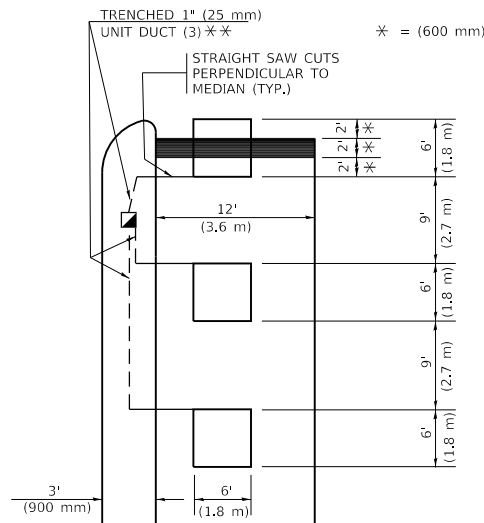


* = (600 mm)

** UNIT DUCT IS TO BE SHOWN ON PLAN SHEETS BUT SHALL NOT BE INCLUDED IN THE PAY ITEMS.

LEFT TURN LANES WITH MEDIANS
VOLUME DENSITY ("FAR OUT" DETECTION)
ON SAME APPROACH
(PROTECTED / PERMITTED LEFT TURN PHASING)

HANDHOLE LOCATION MAY VARY DEPENDING ON GEOMETRICS AND DESIGN OF TRAFFIC SIGNALS. HEAVY-DUTY HANDHOLES TO BE USED WHEN THE MEDIAN IS MOUNTABLE. REFER TO STANDARD 814001 TO ENSURE THAT HANDHOLE FITS IN MEDIAN.

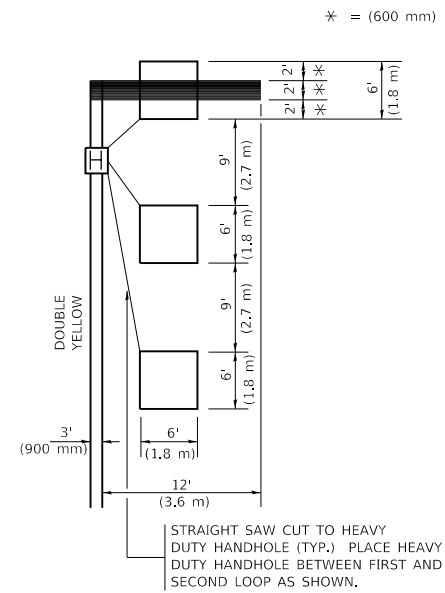


* = (600 mm)

** UNIT DUCT IS TO BE SHOWN ON PLAN SHEETS BUT SHALL NOT BE INCLUDED IN THE PAY ITEMS.

NOTE: DUAL LEFT TURNS NOT SHOWN REFER TO PLAN SHEET FOR DETECTOR LOOP REPLACEMENT

LEFT TURN LANES WITHOUT MEDIANS
VOLUME DENSITY ("FAR OUT" DETECTION)
ON SAME APPROACH
(PROTECTED / PERMITTED LEFT TURN PHASING)



* = (600 mm)

NOTE: DUAL LEFT TURNS NOT SHOWN REFER TO PLAN SHEET FOR DETECTOR LOOP REPLACEMENT

NOTES:

VEHICLES LOOP DETECTORS

- * ALL LEAD IN CABLE SHALL BE TWO CONDUCTOR NO. 14 TWISTED, SHIELDED.
- * EACH DETECTOR LOOP SHALL HAVE ITS OWN SAW CUT FROM THE LOOP TO THE EDGE OF PAVEMENT OR TO A HANDHOLE IN THE PAVEMENT.
- * EACH DETECTOR LOOP SHALL HAVE ITS OWN ONE INCH (25 mm) UNIT DUCT BETWEEN THE EDGE OF PAVEMENT AND THE FIRST HANDHOLE OR JUNCTION BOX. EACH UNIT DUCT RUN SHALL BE SHOWN ON THE PLANS BY THE DESIGNER, BUT SHALL NOT BE PAID FOR SEPARATLY. THIS ITEM IS INCIDENTAL TO THE PAY ITEM FOR DETECTOR LOOPS.
- * ONE DIMENSION OF ALL DETECTOR LOOPS SHALL BE SIX FEET (1.8 m)
- * EACH LANE OF NON-LOCKING, PRESENCE DETECTION AND EACH LANE OF A DOUBLE LEFT TURN LANE REQUIRES A SEPARATE INDUCTIVE LOOP DETECTOR AND LEAD IN CABLE.
- * WHEN NON-LOCKING, PRESENCE DETECTION IS USED, MORE THAN ONE LOOP PER LANE IS REQUIRED BEHIND THE STOP BAR (i.e. 1-1/2, 1-3/4, 2).
- * WHEN SYSTEM LOOPS ARE REQUIRED ON AN APPROACH OF AN INTERSECTION, THE LOOPS USED FOR VOLUME DENSITY AND INTERSECTION TIMING SHALL ALSO BE USED AS SYSTEM DETECTORS. EACH ONE OF THESE TYPE OF LOOPS REQUIRES A SEPARATE TWO CONDUCTOR NO. 14 TWISTED SHIELDED CABLE AND A SEPARATE INDUCTIVE LOOP DETECTOR WHEN NEW CONTROLLERS ARE UTILIZED. THE DESIGNER SHALL LABEL THESE TYPES OF LOOPS AS "INTERSECTION AND SAMPLING (SYSTEM) DETECTORS" ON THE SIGNAL LAYOUT, THE INTERCONNECT PLAN AND THE SYSTEM CABLE PLAN. WHEN AN EXISTING CONTROLLER IS UTILIZED FOR THIS TYPE OF DETECTION, THE PAY ITEM "INDUCTIVE LOOP DETECTOR WITH SYSTEM OUTPUT" SHOULD BE USED.

PLACEMENT OF DETECTORS

THE FOLLOWING FIGURES REPRESENT THE MOST COMMON DETECTOR LOOP LOCATIONS AND SIZES. ADJUSTMENTS WILL BE NECESSARY FOR SPECIFIC GEOMETRIC CONSIDERATIONS.

LOCATIONS AND DEMENSIONS OF DETECTOR LOOPS ARE REQUIRED ON ALL SIGNAL LAYOUT PLAN SHEETS.

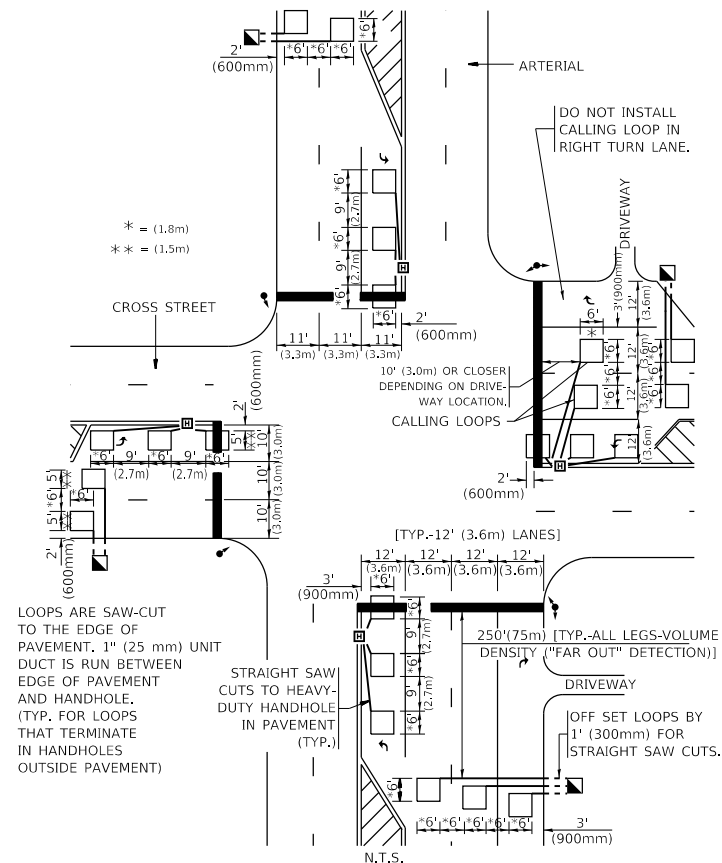
"FAR OUT" DETECTION REFERS TO LOCKING, PRESENCE TYPE DETECTION LOCATED IN THRU LANES, RIGHT TURN LANES, AND RIGHT TURN LANE TAPER AREAS (IF APPLICABLE), USUALLY 250' (75 m) IN ADVANCE OF STOP BARS. "UPTIGHT" DETECTION REFERS TO NON-LOCKING PRESENCE TYPE DETECTION LOCATED IN ALL LANES AND 10'-15' (3.0 m-4.5 m) BEHIND THE CROSSING STREET'S EDGE OF PAVEMENT EXTENDED.

NOTE:

ALL DETAILS AND NOTES SHOWN ARE FROM THE I.D.O.T. DISTRICT 1 TRAFFIC SIGNAL DESIGN GUIDELINES DATED JANUARY 1995

THIS DRAWING HAS BEEN PREPARED TO ASSIST THE RESIDENT ENGINEER FOR ALL ROADWAY RESURFACING OR S.M.A.R.T. PROJECTS WHERE THE DIMENSIONS ARE NOT SHOWN ON THE PLANS AND THE FINAL LOCATIONS FOR CROSSWALKS OR STOP BARS ARE NOT DETERMINED.

ARTERIAL-VOLUME DENSITY ("FAR OUT" DETECTION)
CROSS STREET-NON VOLUME DENSITY ("FAR OUT" DETECTION)



* = (1.8m)
 ** = (1.5m)

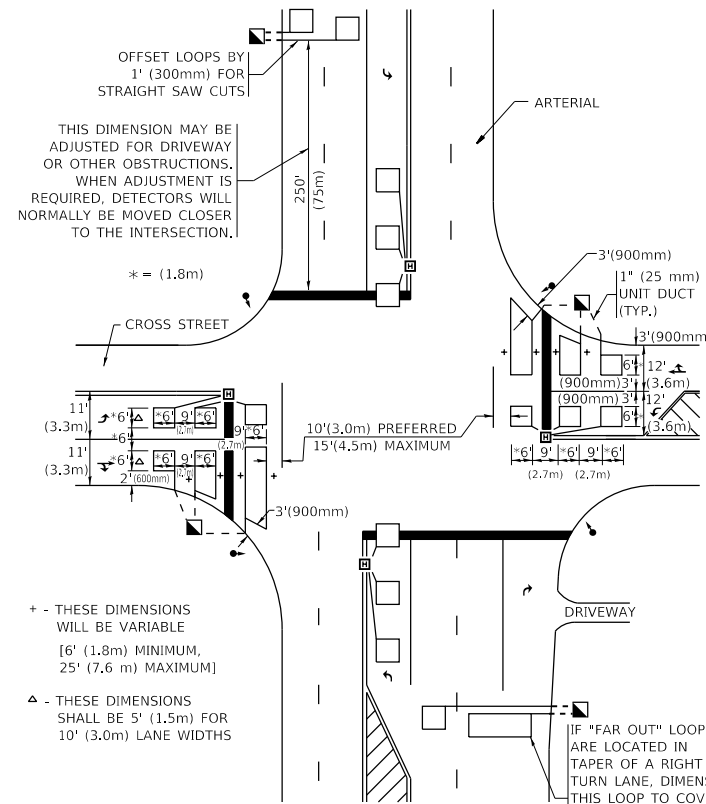
LOOPS ARE SAW-CUT TO THE EDGE OF PAVEMENT. 1" (25 mm) UNIT DUCT IS RUN BETWEEN EDGE OF PAVEMENT AND HANDHOLE. (TYP. FOR LOOPS THAT TERMINATE IN HANDHOLES OUTSIDE PAVEMENT)

STRAIGHT SAW CUTS TO HEAVY-DUTY HANDHOLE IN PAVEMENT (TYP.)

[TYP.-12' (3.6m) LANES]
 250' (75m) [TYP.-ALL LEGS-VOLUME DENSITY ("FAR OUT" DETECTION)]
 DRIVEWAY
 OFF SET LOOPS BY 1' (300mm) FOR STRAIGHT SAW CUTS.

DETAIL 1
 N.T.S.

ARTERIAL-VOLUME DENSITY ("FAR OUT" DETECTION)
CROSS STREET-NON VOLUME DENSITY ("UPTIGHT" PRESENCE DETECTION)



THIS DIMENSION MAY BE ADJUSTED FOR DRIVEWAY OR OTHER OBSTRUCTIONS. WHEN ADJUSTMENT IS REQUIRED, DETECTORS WILL NORMALLY BE MOVED CLOSER TO THE INTERSECTION.

+ - THESE DIMENSIONS WILL BE VARIABLE [6' (1.8m) MINIMUM, 25' (7.6 m) MAXIMUM]
 Δ - THESE DIMENSIONS SHALL BE 5' (1.5m) FOR 10' (3.0m) LANE WIDTHS

IF "FAR OUT" LOOPS ARE LOCATED IN TAPER OF A RIGHT TURN LANE, DIMENSION THIS LOOP TO COVER TAPER AREA. DO NOT COVER THE LEFT TURN LANE OR LEFT TURN LANE TAPER.

DETAIL 2
 N.T.S.

STATE OF ILLINOIS
DEPARTMENT OF TRANSPORTATION

DISTRICT 1 - DETECTOR LOOP INSTALLATION
DETAILS FOR ROADWAY RESURFACING

SCALE: NONE SHEET 1 OF 1 SHEETS STA. TO STA.

F.A.P. RTE.	SECTION	COUNTY	TOTAL SHEETS	SHEET NO.
303	2019-094-R5-SW&SR	LAKE	30	30
TS-02		CONTRACT NO. 62J92		
ILLINOIS		FED. AID PROJECT		