

06-12-2020 LETTING ITEM 182

STATE OF ILLINOIS
DEPARTMENT OF TRANSPORTATION

PLANS FOR PROPOSED
FEDERAL AID HIGHWAY
CITY OF SPRING VALLEY
FAU 5610 (LADD ROAD)
SECTION 18-00056-00-RS
PROJECT 981Q(753)
BUREAU COUNTY
C-93-009-20

F.A.U. RTE.	SECTION	COUNTY	TOTAL SHEETS	SHEET NO.
5610	18-00056-00-RS	BUREAU	5	1
FED. ROAD DIST. NO. -	ILLINOIS	CONTRACT NO. 87721		

INDEX OF SHEETS

1. COVER SHEET
2. GENERAL NOTES AND SUMMARY OF QUANTITIES
3. TYPICAL SECTIONS
- 4.-5. PLAN SHEETS

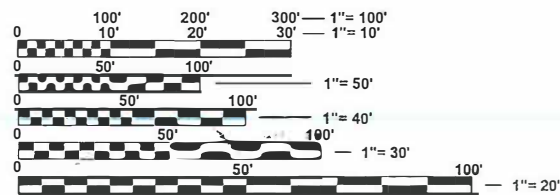
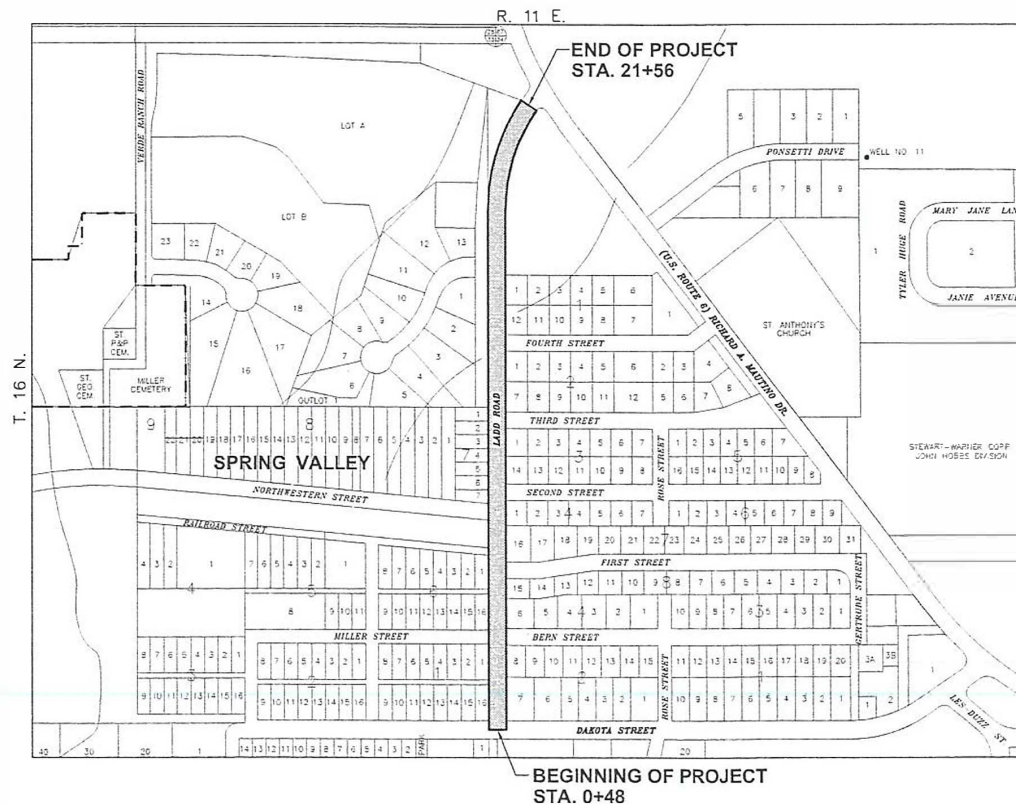
HIGHWAY STANDARDS

- | | |
|-----------|---|
| 000001-07 | STANDARD SYMBOLS, ABBREVIATIONS AND PATTERNS |
| 001006 | DECIMAL OF AN INCH AND OF A FOOT |
| 280001-07 | TEMPORARY EROSION CONTROL SYSTEMS |
| 424001-11 | PERPENDICULAR CURB RAMPS FOR SIDEWALKS |
| 424006-04 | DIAGONAL CURB RAMPS FOR SIDEWALKS |
| 424011-04 | CORNER PARALLEL CURB RAMPS FOR SIDEWALKS |
| 424016-05 | MID-BLOCK CURB RAMPS FOR SIDEWALKS |
| 424031-02 | MEDIAN PEDESTRIAN CROSSINGS |
| 606001-07 | CONCRETE CURB TYPE B AND COMBINATION CONCRETE CURB AND GUTTER |
| 701001-02 | OFF-ROAD OPERATIONS, 2L, 2W, MORE THAN 15' (4.5 m) AWAY |
| 701006-05 | OFF-ROAD OPERATIONS, 2L, 2W, 15' (4.5 m) TO 24' (600 mm) FROM PAVEMENT EDGE |
| 701301-04 | LANE CLOSURE, 2L, 2W, SHORT TIME OPERATIONS |
| 701311-03 | LANE CLOSURE, 2L, 2W, MOVING OPERATIONS - DAY ONLY |
| 701501-06 | URBAN LANE CLOSURE, 2L, 2W, UNDIVIDED |
| 701801-06 | SIDEWALK, CORNER OR CROSSWALK CLOSURE |
| 701901-08 | TRAFFIC CONTROL DEVICES |
| 780001-05 | TYPICAL PAVEMENT MARKINGS |



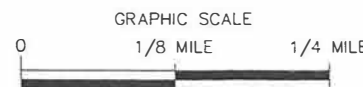
LOCATION OF SECTION INDICATED THIS: -

FAU 5610 (LADD ROAD)
FUNCTION CLASSIFICATION: MINOR ARTERIAL
ADT=563 (2020)
POSTED SPEED 30 MPH



FULL SIZE PLANS HAVE BEEN PREPARED USING STANDARD ENGINEERING SCALES. REDUCED SIZED PLANS WILL NOT CONFORM TO STANDARD SCALES. IN MAKING MEASUREMENTS ON REDUCED PLANS, THE ABOVE SCALES MAY BE USED.

J.U.L.I.E.
JOINT UTILITY LOCATION INFORMATION FOR EXCAVATION
1-800-892-0123
OR 811



NET LENGTH OF SECTION -- 2108' (0.399 MILES)
GROSS LENGTH OF SECTION -- 2108' (0.399 MILES)

04-08-2020
date

KEVIN W. HEITZ
LICENSED PROFESSIONAL ENGINEER
NO. 062-053759
STATE OF ILLINOIS
signature

PROFESSIONAL DESIGN FIRM
LICENSE NO. 184-001717

STATE OF ILLINOIS
DEPARTMENT OF TRANSPORTATION
DIVISION OF HIGHWAYS

SUBMITTED 4-8-2020
MAYOR, CITY OF SPRING VALLEY

PASSED 4/9/2020
DISTRICT 3, LOCAL ROADS AND STREETS ENGINEER

RELEASED FOR BID BASED ON LIMITED REVIEW 4/9/2020
REGION 2 ENGINEER

PRINTED BY THE AUTHORITY
OF THE STATE OF ILLINOIS

MICHAEL S. RICHIETTA
CHAMLIN & ASSOCIATES
815.223.3344

CONTRACT NO. 87721

TOWNSHIP 36 N., R. 11 E. SECTIONS 33, & 34

BUREAU COUNTY

SECTION: 18-00056-00-RS

ROUTE: F.A.U. 5610 (LADD ROAD)

F.A.U. RTE.	SECTION	COUNTY	TOTAL SHEETS	SHEET NO.
5610	18-00056-00-RS	BUREAU	5	2
FED. ROAD DIST. NO. -	ILLINOIS	CONTRACT NO. 87721		

GENERAL NOTES

THE THICKNESS OF THE HMA SHOWN ON THE PLANS IS THE NOMINAL THICKNESS. DEVIATIONS FROM THE NOMINAL THICKNESS WILL BE PERMITTED WHEN SUCH DEVIATIONS OCCUR DUE TO IRREGULARITIES IN THE EXISTING SURFACE OR BASE ON WHICH THE HMA IS PLACED

THE ENGINEER WILL BE THE SOLE JUDGE CONCERNING CURING TIME FOR VARIOUS HMA LIFTS.

FOR STABILIZATION ALL TYPE III BARRICADES WILL REQUIRE A MINIMUM OF FOUR SAND BAGS PER BARRICADE.

THE FOLLOWING RATES OF APPLICATION HAVE BEEN USED IN CALCULATING PLAN QUANTITIES.

BITUMINOUS MATERIALS (PRIME COAT) RATES		
SURFACE TYPE	ESTIMATED TRUCK APPLICATION RATE	RESIDUAL RATE
AGGREGATE BASES	0.375 GAL/SQ YD	N/A
MILLED HMA OR PCC PAVEMENT	0.08 GAL/SQ YD	0.04 GAL/SQ YD
EXISTING PAVEMENT	0.05 GAL/SQ YD	0.025 GAL/SQ YD
FOG COAT (BETWEEN ADDITIONAL HMA LIFTS)	0.05 GAL/SQ YD	0.025 GAL/SQ YD

ESTIMATED TRUCK APPLICATION RATE USED FOR CALCULATING PLAN QUANTITIES

CONTRACTOR SHALL CONTACT JULIE AT LEAST 48 HOURS PRIOR TO EXCAVATION.

CONSTRUCTION TYPE CODE 005 SUMMARY OF QUANTITIES

ITEM CODE	ITEM	QUANTITY	UNIT
20800150	TRENCH BACKFILL	16	C.Y.
40600290	BITUMINOUS MATERIALS (TACK COAT)	4,783	LBS.
40600400	MIXTURE FOR CRACKS, JOINTS AND FLANGEWAYS	20	TON
40602965	HOT-MIX ASPHALT BINDER COURSE, IL 9.5 FG, NS0	496	TON
40604000	HOT-MIX ASPHALT SURFACE COURSE, IL 9.5 FG, MIX C, NS0	596	TON
42300200	PCC DRIVEWAY PAVEMENT, 6"	19.2	S.Y.
Δ 42400200	PCC SIDEWALK, 5"	463	S.F.
Δ 42400800	DETECTABLE WARNINGS	50	S.F.
Δ 44000158	HMA SURFACE REMOVAL, 2-1/2"	7,090	S.Y.
44000200	DRIVEWAY PAVEMENT REMOVAL	19.2	S.Y.
Δ 44000500	COMB. CURB AND GUTTER REMOVAL	1276	L.F.
44000600	SIDEWALK REMOVAL	463	S.F.
44201696	CLASS D PATCHES, TYPE IV, 4"	27	S.Y.
550A0050	STORM SEWER, CLASS A, TY-1, 12"	12	L.F.
550A0070	STORM SEWER, CLASS A, TY-1, 15"	24	L.F.
55100500	STORM SEWER REMOVAL, 12"	36	L.F.
60235700	INLET, TY-A W/ TY-3 'FR & GR	4	EACH
Δ 60255500	MANHOLE TO BE ADJUSTED W/ TY-1 FR & CL	3	EACH
Δ 60266600	VALVE LIDS TO BE ADJUSTED	3	EACH
60603800	COMB. CONC. CURB AND GUTTER, TY B-6.12	1276	L.F.
70102620	TRAFFIC CONTROL AND PROTECTION 701501	1	L.S.
70102640	TRAFFIC CONTROL AND PROTECTION 701801	1	L.S.
* 78000650	THERMO. PAVEMENT MARKING, LINE, 24"	104	L.F.
6700100	MOBILIZATION	1	L.S.
* SPECIALTY ITEM			
Δ SPECIAL PROVISION			

CHAMLIN & ASSOCIATES, INC. © 2013

DRAWN BY: DS	REVISIONS			
CHECKED BY: MSR	LEVEL	BY	DATE	DESCRIPTION
DATE: 01/20				

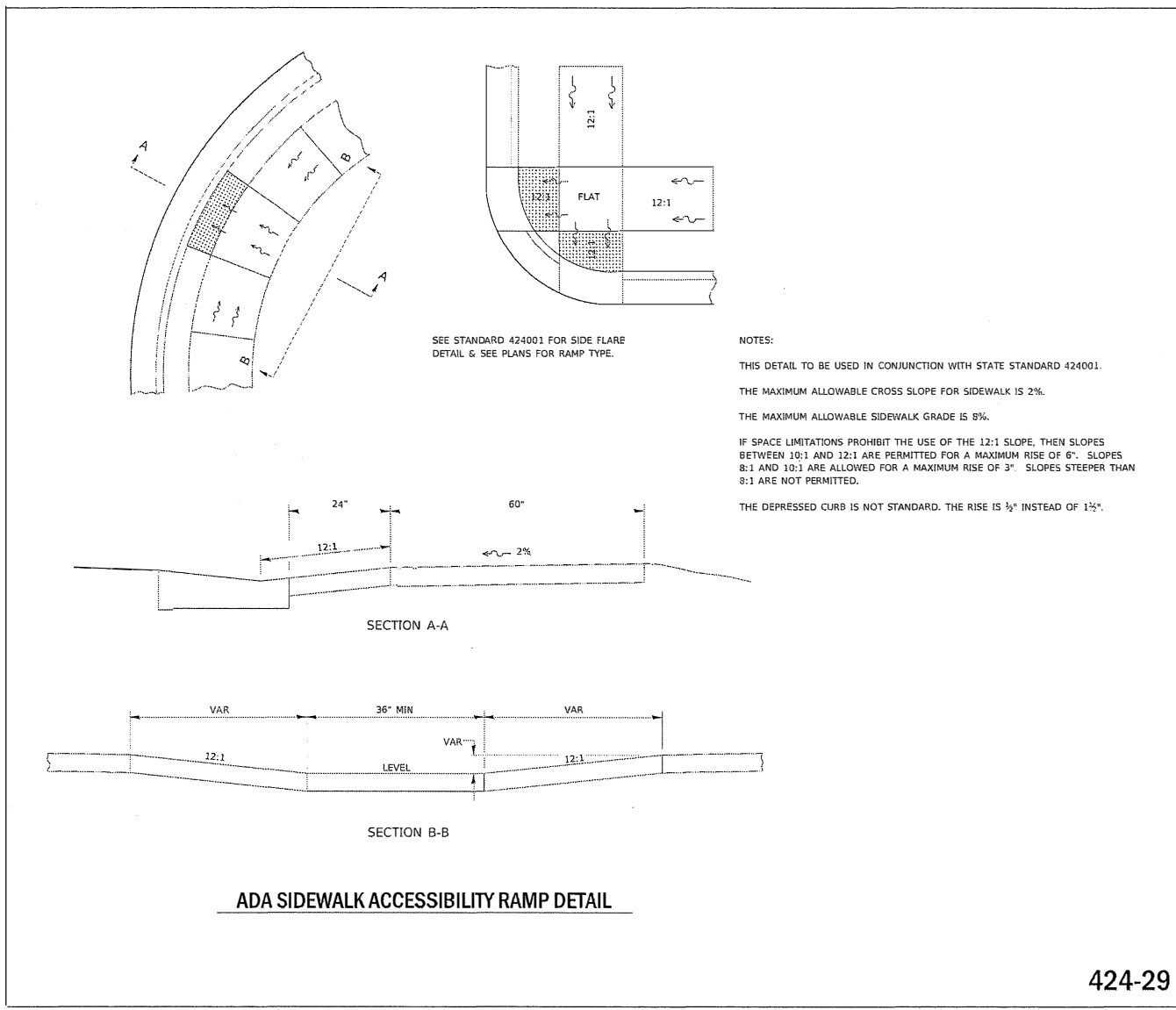
CHAMLIN & ASSOCIATES, INC.
PERU MORRIS ILLINOIS

FAU 5610 (LADD ROAD)
SECTION 18-00056-00-RS
CITY OF SPRING VALLEY
BUREAU COUNTY

GENERAL NOTES AND
SUMMARY OF QUANTITIES

CONSTRUCTION
PLANS

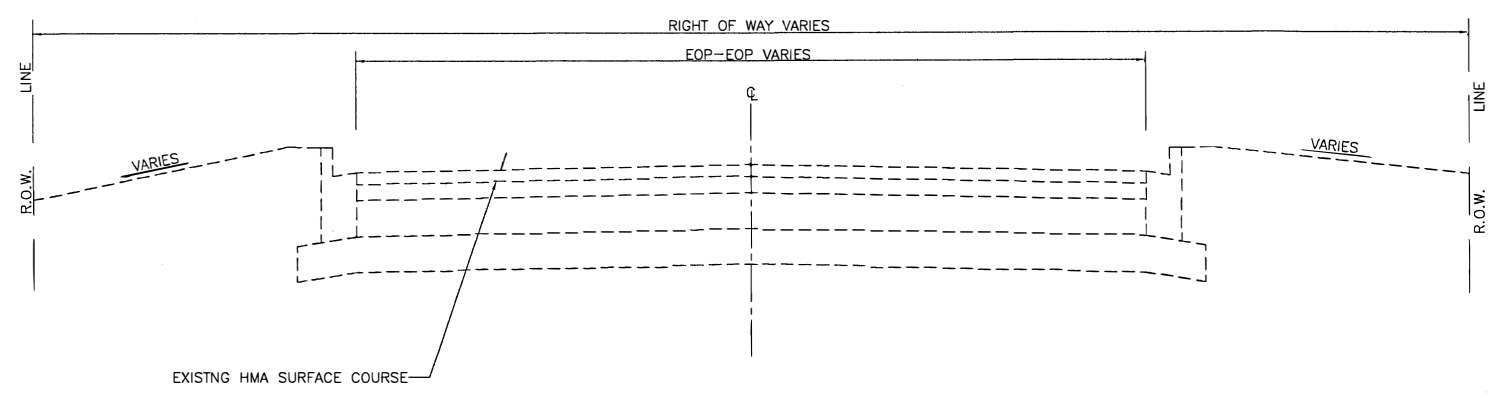
CURRENT AS OF: 03/17/2020	
SCALE: AS NOTED	SHEET 2
FILE NO.: 66171.05 Y-	OF 5



ADA SIDEWALK ACCESSIBILITY RAMP DETAIL

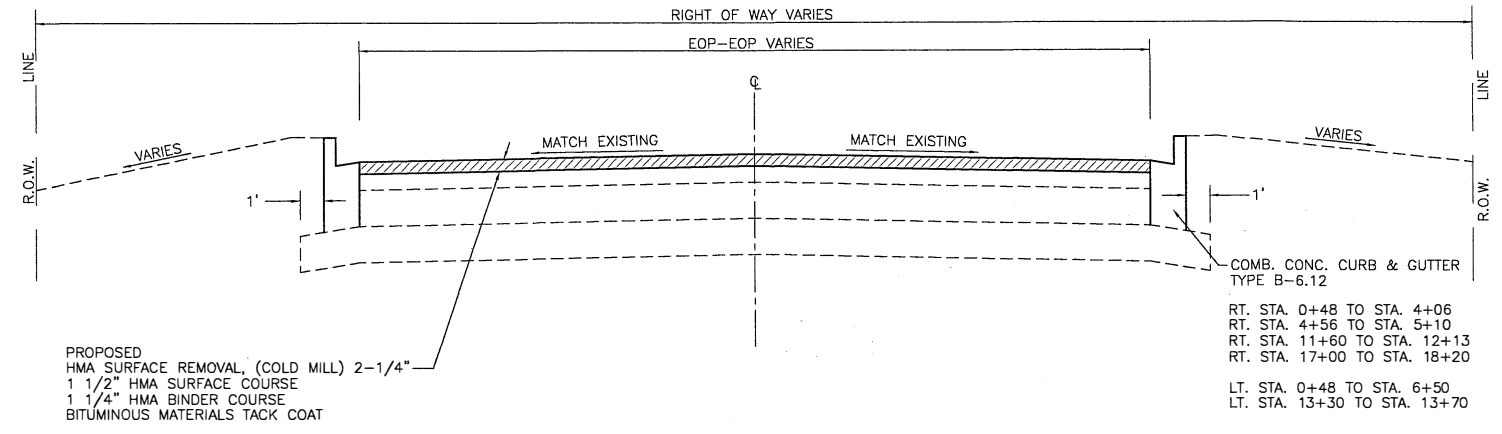
424-29

STANDARD ADA SIDEWALK RAMP DETAIL
LADD ROAD
N.T.S.



EXISTING TYPICAL CROSS SECTION
LADD ROAD

N.T.S.
 STA. 0+48 TO STA. 21+56



PROPOSED TYPICAL CROSS SECTION
LADD ROAD

N.T.S.
 STA. 0+48 TO STA. 21+56

STA. 0+48 TO STA. 11+50= 35.0' (EOP TO EOP)
 STA. 11+50 TO STA. 12+13= 35.0' (EOP TO EOP)
 STA. 12+13 TO STA. 18+08= 21.0' (EOP TO EOP)
 STA. 18+08 TO STA. 19+00= 21.0' TO 27.0' (EOP TO EOP)
 STA. 19+00 TO STA. 21+56= 27.0' (EOP TO EOP)

LOCATION(S):	ENTIRE PROJECT	ENTIRE PROJECT	ENTIRE PROJECT
MIXTURE USE(S):	HMA SURFACE	HMA BINDER	CLASS D PATCHING
BINDER GRADE (PG):	PG 64-22	PG 64-22	PG 64-22
DESIGN AIR VOIDS:	4.0% @ N50	4.0% @ N50	4.0% @ N50
MIXTURE COMPOSITION (GRADATION):	IL 9.5 FG	IL 9.5 FG	IL 19.0
FRICITION AGGREGATE:	MIXTURE C		
MIXTURE WEIGHT:	112.0 LB/SY/IN	112.0 LB/SY/IN	112.0 LB/SY/IN
QUALITY MANAGEMENT PROGRAM:	QCQA	QCQA	QCQA
SUBLOTSIZE:	NA	NA	NA
DENSITY TEST METHOD:	LR 1030	LR 1030	SATISFACTION OF ENGINEER

NOTE: IF AN ANTI-STRIPPING AGENT IS REQUIRED OR ADDED, THERE WILL BE NO ADDITIONAL COMPENSATION AND THE ANTI-STRIPPING AGENT SHALL BE CONSIDERED INCIDENTAL TO THE PRICE OF THE HOT-MIX ASPHALT.

DRAWN BY: DS	REVISIONS		
CHECKED BY: MSR	LEVEL	BY	DATE
DATE: 01/20			
			DESCRIPTION

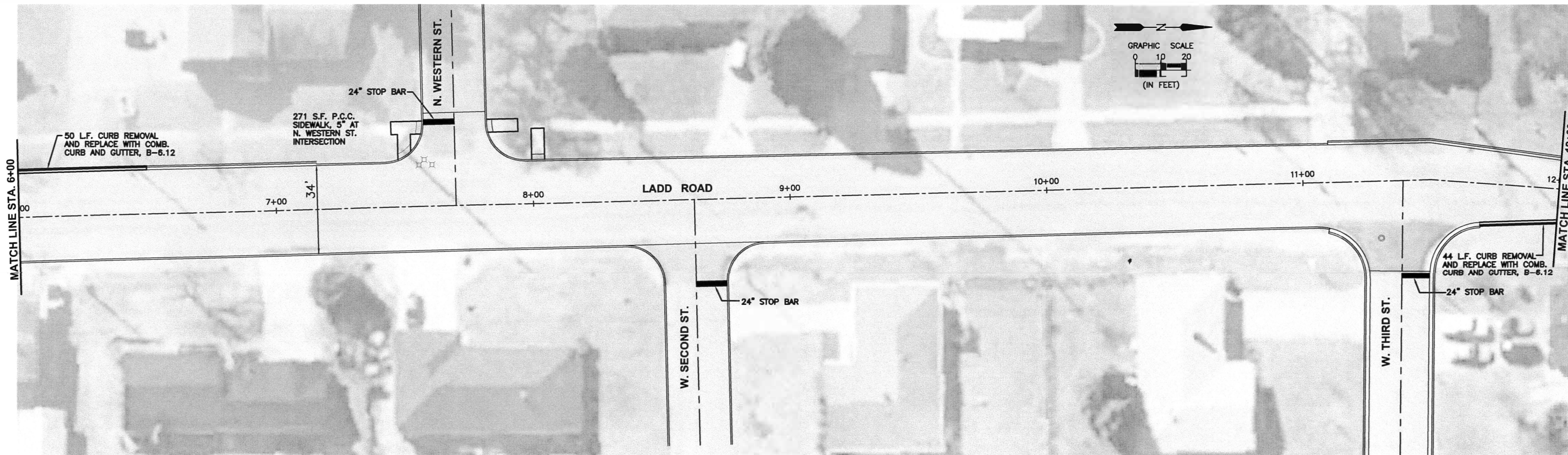
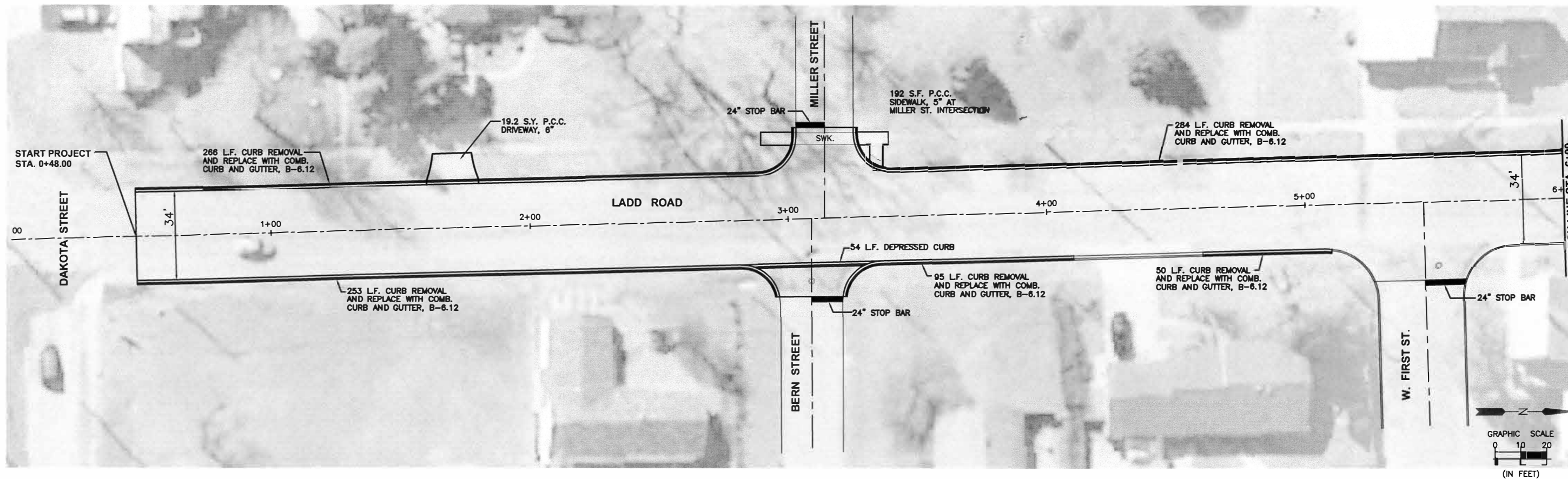
CHAMLIN ASSOCIATES, INC.
 PERU MORRIS ILLINOIS

FAU 5610 (LADD ROAD)
 SECTION 18-00056-00-RS
 CITY OF SPRING VALLEY
 BUREAU COUNTY

TYPICAL SECTIONS

CURRENT AS OF: 03/17/2020	
SCALE: AS NOTED	SHEET 3
FILE NO.: 6 17 05 Y-	OF 5

CHAMLIN & ASSOCIATES, INC. © 2013



CHAMLIN & ASSOCIATES, INC. © 2020
 Drawn: 1/20/20
 Checked: 1/20/20
 Date: 1/20/20
 File: 18-00056-00-RS-1.dwg
 Last Modified: Wednesday, April 08, 2020 2:32:21 PM
 Plotter: On: Wednesday, April 08, 2020 2:41:24 PM
 by: Mike Mazzetta

DRAWN BY: DS	REVISIONS			
CHECKED BY: MSR	LEVEL	BY	DATE	DESCRIPTION
DATE: 1/20				

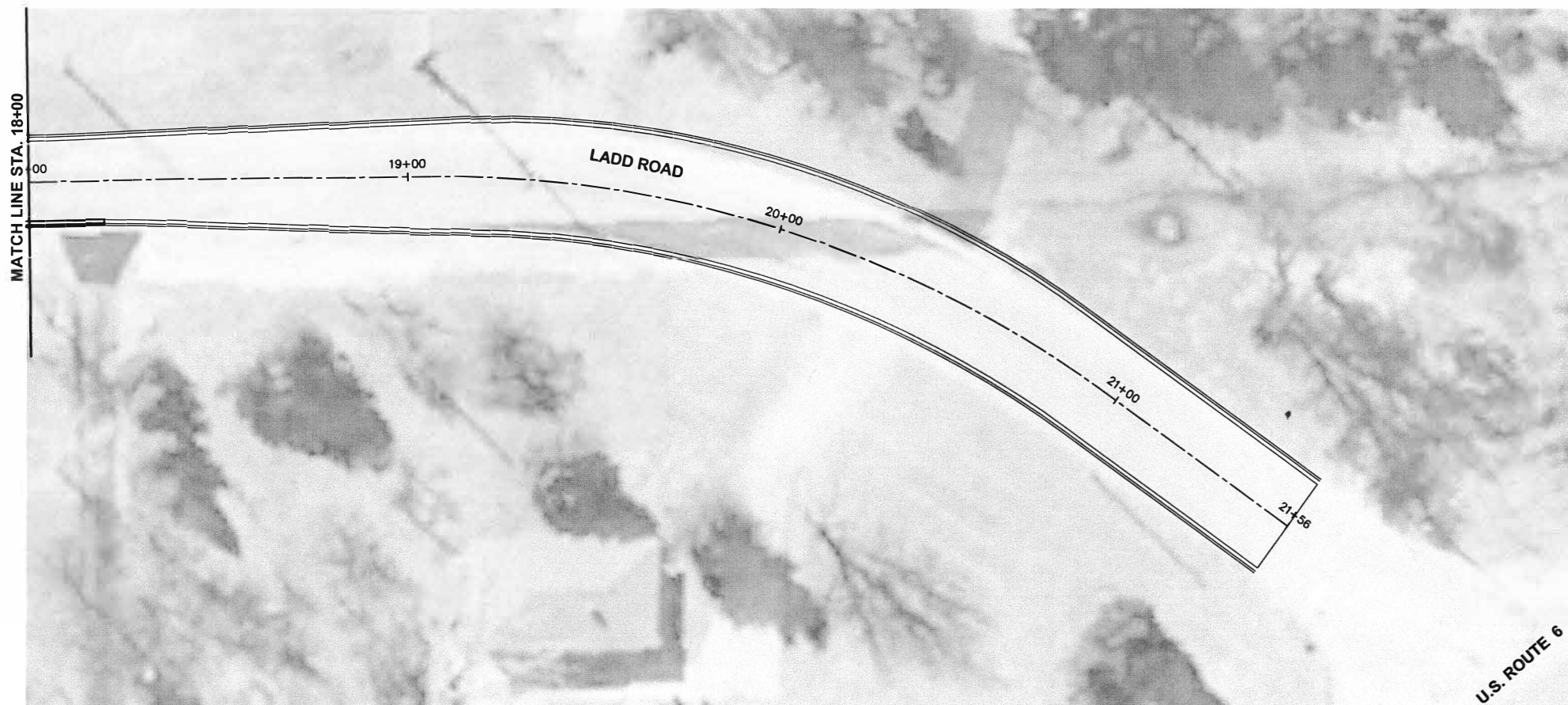
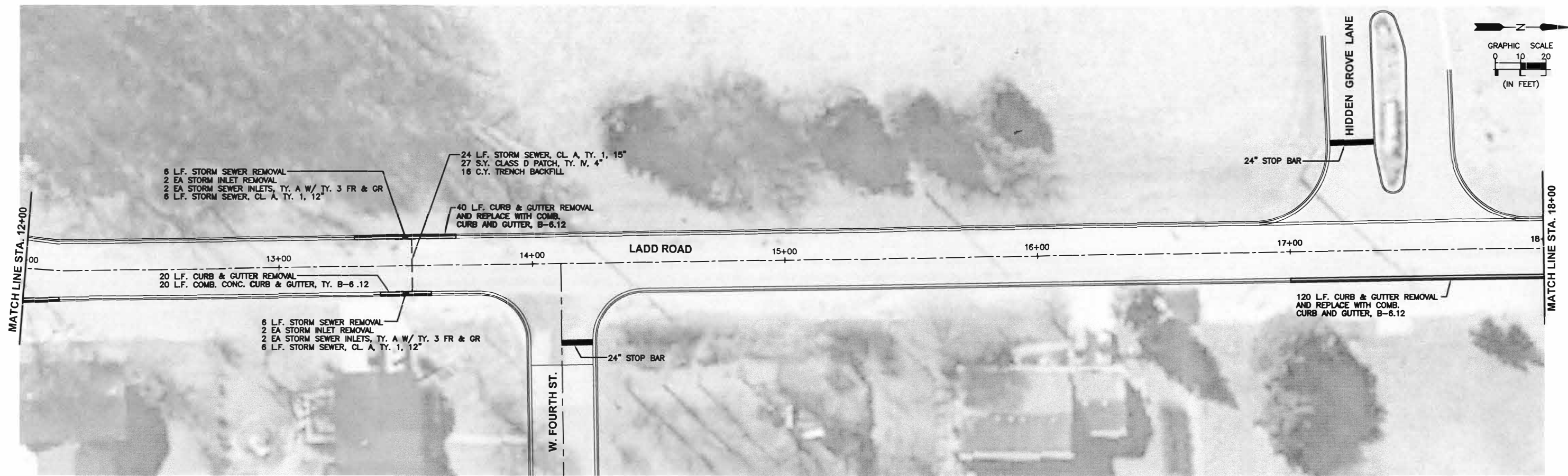
CHAMLIN & ASSOCIATES, INC.
 PERU OTTAWA MORRIS
 ILLINOIS

FAU 5610 (LADD ROAD)
 SECTION 18-00056-00-RS
 CITY OF SPRING VALLEY
 BUREAU COUNTY

PLAN SHEET

CONSTRUCTION PLANS

CURRENT AS OF: 03/17/2020	SHEET 4
SCALE: AS NOTED	OF 5
FILE NO.: 66171.05 Y-	



CHAMLIN & ASSOCIATES, INC. © 2020
 C:\Users\msr\OneDrive\Spring Valley STU-Ladd Road\CAD\005-PP-2.dwg
 Last Modified: Tuesday, April 07, 2020 3:46:15 PM. Plotted On: Wednesday, April 08, 2020 2:51:59 PM. By: Mike Licchetta

DRAWN BY: DS	REVISIONS			
CHECKED BY: MSR	LEVEL	BY	DATE	DESCRIPTION
DATE: 1/20				


 PERU OTTAWA MORRIS
 ILLINOIS
 ASSOCIATES, INC.

FAU 5610 (LADD ROAD)
 SECTION 18-00056-00-RS
 CITY OF SPRING VALLEY
 BUREAU COUNTY

PLAN SHEET

CONSTRUCTION PLANS	CURRENT AS OF: 03/17/2020	
	SCALE: AS NOTED	SHEET 5
	FILE NO.: 66171.05 Y-	OF 5