

DRAINAGE STRUCTURES

| LOCATION | 60218400 MAN TA 4 DIA T1F CL EA | 60218500 MAN TA 4 DIA T3 F&G EA | 60235700 INLETS TA T3F&G EA | 60236200 INLETS TA T8G EA | 60240220 INLETS TB T3F&G EA | 60240301 INLETS TB T8G EA | X6020082 INLETS TG-1 EA | X603203 INLETS T1F CL SPL EA | 28000500 INLET & PIPE PROTECT EA |
|--------------------|---------------------------------------|---------------------------------------|-----------------------------------|---------------------------------|-----------------------------------|---------------------------------|-------------------------------|------------------------------------|--|
| STA 10+56 15.5' RT | | | 1 | | | | | | 1 |
| STA 10+56 22.3' RT | | | | | | | | 1 | 1 |
| STA 13+40 20.8' LT | | | 1 | | | | | | 1 |
| STA 13+40 15.5' RT | | | | | 1 | | | | 1 |
| STA 15+48 15.5' LT | | | 1 | | | | | | 1 |
| STA 15+48 15.5' RT | | | | | 1 | | | | 1 |
| STA 15+48 24.2' RT | | | | | | | | 1 | 1 |
| STA 18+97 15.5' LT | | | 1 | | | | | | 1 |
| STA 18+97 15.5' RT | | | | | 1 | | | | 1 |
| STA 18+97 23.8' RT | | | | | | | | 1 | 1 |
| STA 21+89 22.6' RT | | | | | | | | 1 | 1 |
| STA 21+93 16.9' RT | | 1 | | | | | | | 1 |
| STA 21+96 19.6' LT | | | | | 1 | | | | 1 |
| STA 22+30 20.3' LT | | | 1 | | | | | | 1 |
| STA 22+31 19.6' RT | | | 1 | | | | | | 1 |
| STA 24+53 15.5' LT | | | 1 | | | | | | 1 |
| STA 24+53 15.5' RT | | | | | 1 | | | | 1 |
| STA 26+59 18.5' RT | | | | | 1 | | | | 1 |
| STA 26+59 18.3' LT | | | 1 | | | | | | 1 |
| STA 26+95 18.4' LT | | | 1 | | | | | | 1 |
| STA 26+94 19.6' RT | | | | | 1 | | | | 1 |
| STA 29+80 15.5' LT | | | 1 | | | | | | 1 |
| STA 29+80 15.5' RT | | | | | 1 | | | | 1 |
| STA 30+52 21.2' RT | | | | | 1 | | | | 1 |
| STA 30+95 21.6' RT | | 1 | | | | | | | 1 |
| STA 32+50 15.5' LT | | | 1 | | | | | | 1 |
| STA 32+50 15.5' RT | | | | | 1 | | | | 1 |
| STA 33+65 7.0' RT | | | | | 1 | | | | 1 |
| STA 34+35 0.0' CL | 1 | | | | | | | | 1 |
| STA 34+35 15.5' LT | | | | | | | 1 | | 1 |
| STA 34+35 15.5' RT | | | | | | | 1 | | 1 |
| STA 34+50 15.5' LT | | | 1 | | | | | | 1 |
| STA 34+50 15.5' RT | | | 1 | | | | | | 1 |
| STA 39+25 15.5' LT | | | | | 1 | | | | 1 |
| STA 39+25 15.5' RT | | | 1 | | | | | | 1 |
| STA 40+42 22.7' RT | | | 1 | | | | | | 1 |
| STA 40+52 40.7' RT | | | | | 1 | | | | 1 |
| STA 40+79 38.8' RT | | | | | 1 | | | | 1 |
| STA 40+90 15.5' LT | | | | | | | 1 | | 1 |
| STA 40+90 21.5' RT | | | | | | | 1 | | 1 |
| STA 44+45 15.5' RT | | | 1 | | | | | | 1 |
| STA 44+45 25.5' RT | 1 | | | | | | | | 1 |
| STA 45+65 19.4' RT | | | 1 | | | | | | 1 |
| STA 45+41 29.1' LT | | | | 1 | | | | | 1 |
| STA 2+90 29.1' LT | | | 1 | | | | | | 1 |
| STA 2+73 13.8' RT | | | | | | 1 | | | 1 |
| STA 2+51 13.5' RT | | | | | | 1 | | | 1 |
| STA 2+90 29.0' RT | | | 1 | | | | | | 1 |
| TOTALS | 2 | 2 | 19 | 1 | 14 | 2 | 4 | 4 | 48 |

| F.A.U. ROUTE | SECTION # | CONTRACT # | TOTAL SHEETS | SHEET NO. |
|--------------|----------------|------------|--------------|-----------|
| 6801 | 17-00501-28-RP | 89738 | 110 | 11 |

DRAINAGE STRUCTURE REMOVAL

| LOCATION | 60500040 REMOVE MANHOLES EA | 60500060 REMOVE INLETS EA |
|--------------------|-----------------------------------|---------------------------------|
| STA 13+37 24.7' LT | 1 | |
| STA 13+40 16.4' LT | | 1 |
| STA 13+40 14.3' RT | | 1 |
| STA 21+97 16.4' LT | | 1 |
| STA 22+30 16.6' LT | | 1 |
| STA 26+61 16.2' LT | | 1 |
| STA 26+62 16.5' RT | | 1 |
| STA 26+93 14.6' RT | | 1 |
| STA 26+94 15.9' LT | | 1 |
| STA 29+80 20.5' LT | 1 | 1 |
| STA 30+35 19.5' LT | 1 | |
| STA 30+45 23.2' RT | 1 | |
| STA 30+52 21.2' RT | | 1 |
| STA 30+95 21.6' RT | | 1 |
| STA 34+51 14.3' LT | | 1 |
| STA 34+61 13.6' RT | 1 | |
| STA 40+42 22.7' RT | | 1 |
| STA 40+66 14.5' LT | | 1 |
| STA 40+79 16.2' RT | | 1 |
| STA 45+41 29.1' LT | | 1 |
| STA 2+73 13.8' LT | | 1 |
| STA 2+95 15.5' RT | | 1 |
| TOTALS | 5 | 18 |

ELECTRIC

| LOCATION | 81028370 UNDRGRD C PVC 3 FT | 81400100 HANDHOLE EACH |
|---------------------------------------|-----------------------------------|------------------------------|
| STA 10+45.6 - 17+11 RT | 665 | 1 |
| STA 17+11 - 21+00 RT | 389 | 1 |
| STA 21+00 - 26+32 RT | 532 | 1 |
| STA 26+32 - 31+11 RT | 479 | 1 |
| STA 31+11 - 38+41 RT ³³⁺⁸⁸ | 731 277 | 1 2 |
| STA 38+41 - 44+72 RT | 631 | 1 |
| TOTAL | 3427 2973 | 6 7 |

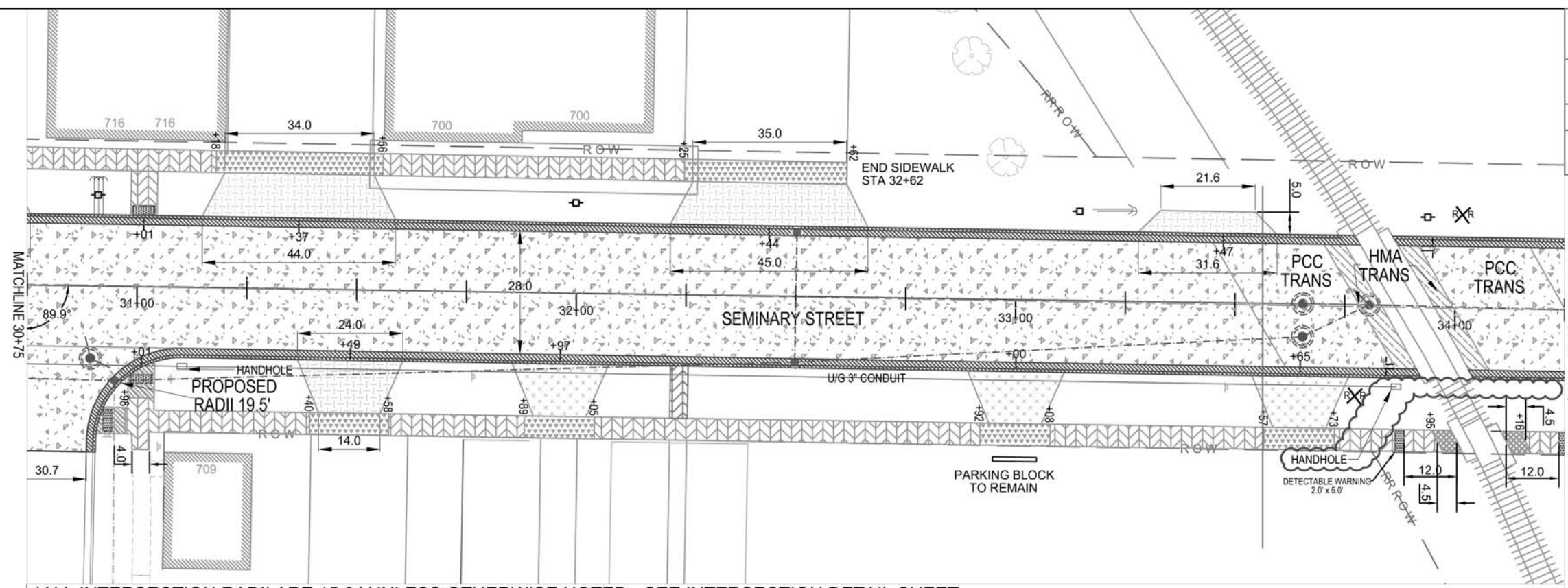
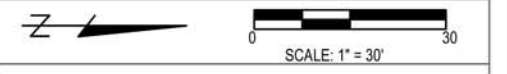
- NOTES: 1. * INDICATES ONLY PARTIAL QUANTITY OF PAY ITEM
 2. SEE WATER MAIN SHEETS FOR ALL WATER MAIN PAY ITEM SCHEDULES

△ REVISED 5/19/20

SCHEDULE OF QUANTITIES
 SEMINARY STREET RECONSTRUCTION
 SECTION # 17-00501-28-RP

| F.A.U. ROUTE | SECTION # | TOTAL SHEETS | SHEET NO. |
|--------------|----------------|--------------|-----------|
| 6801 | 17-00501-28-RP | 110 | 24 |

CONTRACT NO. 89738



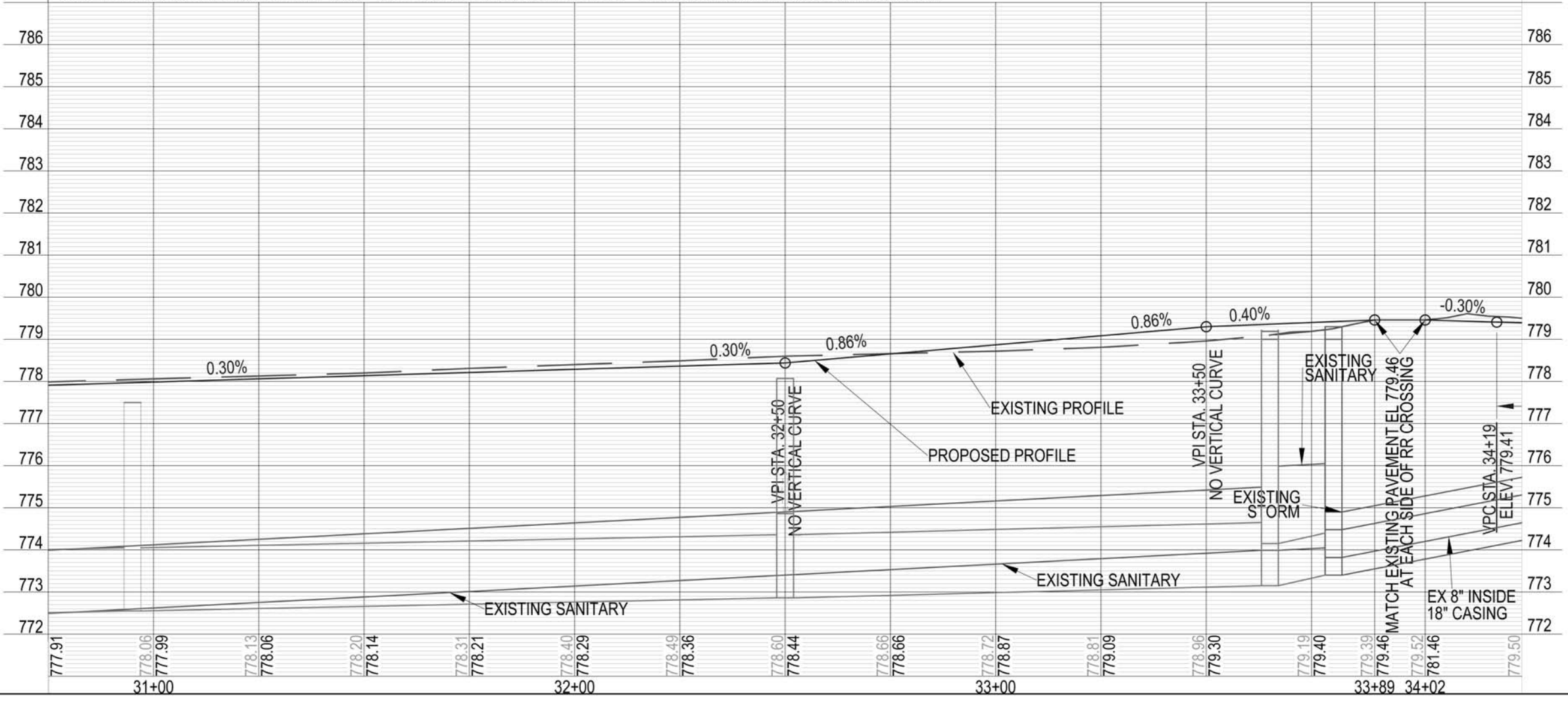
- NOTES:
1. CONTRACTOR SHALL NOTE LOCATION OF EXISTING PROPERTY PINS (PP). ANY PINS THAT ARE REMOVED DURING CONSTRUCTION SHALL BE REPLACED AT THE EXPENSE OF THE CONTRACTOR.
 2. CONTRACTOR SHALL COORDINATE WITH CITY OF GALESBURG STREET DEPARTMENT FOR REMOVAL AND REPLACEMENT OF STREET SIGNS. CONTACT JUSTIN MCNAUGHT AT 309-345-3640.
 3. ALL EXISTING CURB WALL TO REMAIN UNLESS SHOWN AS REMOVAL IN PLANS. ANY DAMAGE TO EXISTING CURB WALL TO REMAIN SHALL BE REPAIRED AT THE CONTRACTOR'S EXPENSE.
 4. ALL DRIVEWAYS ARE 22' WIDE AT THE BACK OF CURB AND 12' WIDE AT THE SIDEWALK UNLESS OTHERWISE NOTED
 5. SEE WATER MAIN SHEETS FOR ALL INFORMATION AND LOCATIONS FOR ASSOCIATED WORK.

LEGEND

- PCC PVT
- HMA BC/SC
- 6" PCC DWY PAVT
- 8" PCC DWY PAVT
- HMA DRIVEWAY PVT
- 4" PCC SW
- 6" PCC SW
- 8" PCC SW
- HMA SIDEWALK
- REMOVE/RELAY BR SW
- PROP CCC&G
- TEMP EASEMENT
- R O W
- PROPERTY LINES
- PHONE PEDISTAL
- POWER POLE
- GUY WIRE
- SAN

REVISD 5/19/20

*ALL INTERSECTION RADII ARE 15.0 ' UNLESS OTHERWISE NOTED - SEE INTERSECTION DETAIL SHEET

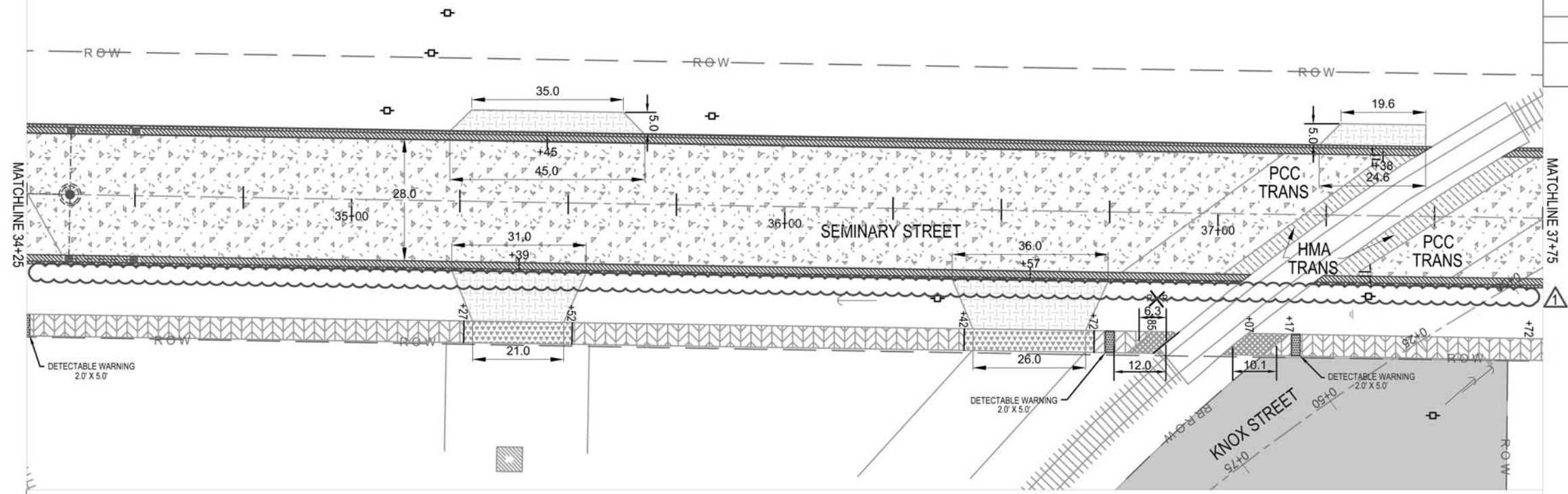


PLAN & PROFILE SHEET 7
 STAGE 4: STA.30+75 TO 34+25
 SEMINARY STREET RECONSTRUCTION
 SECTION #17-00501-28-RP

EXIST
 PROP

| F.A.U. ROUTE | SECTION # | TOTAL SHEETS | SHEET NO. |
|--------------|----------------|--------------|-----------|
| 6801 | 17-00501-28-RP | 110 | 25 |

CONTRACT NO. 89738

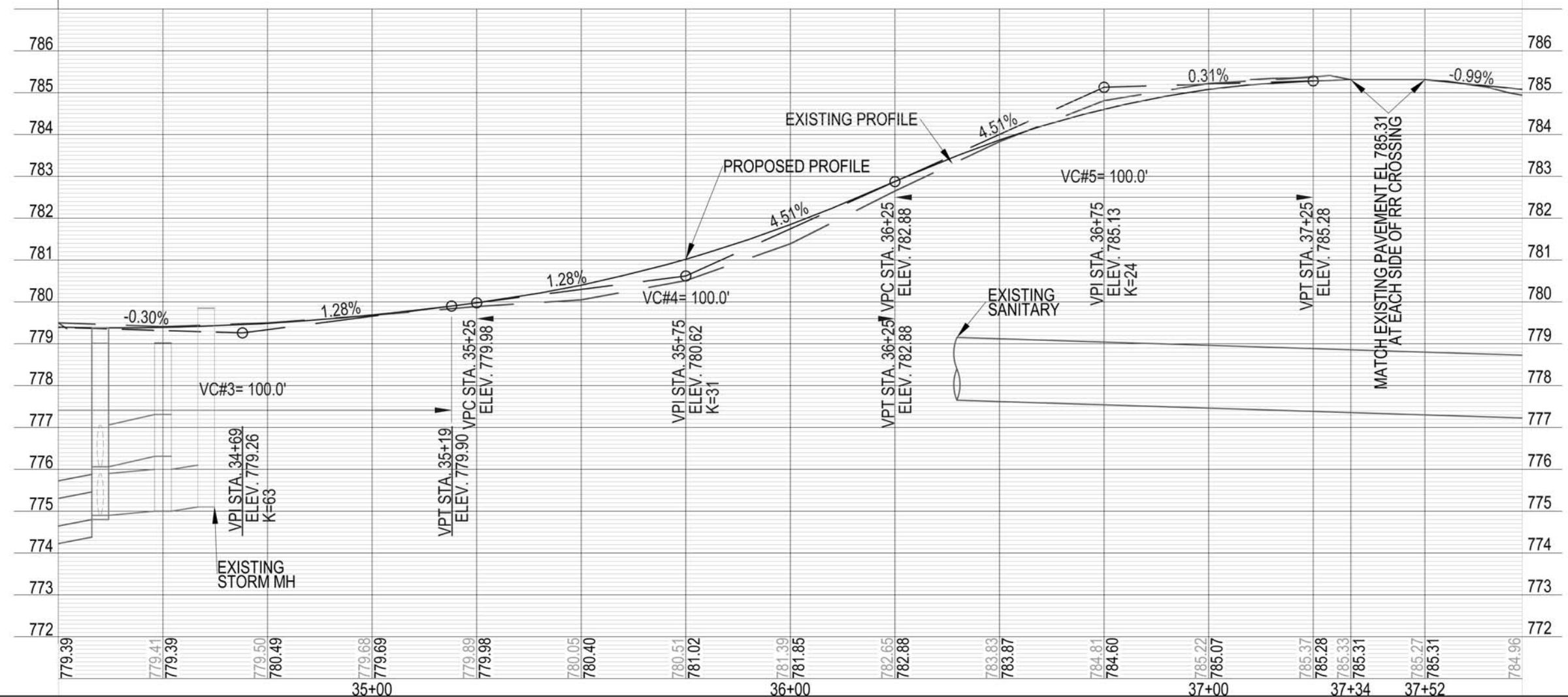


- NOTES:
1. CONTRACTOR SHALL NOTE LOCATION OF EXISTING PROPERTY PINS (PP). ANY PINS THAT ARE REMOVED DURING CONSTRUCTION SHALL BE REPLACED AT THE EXPENSE OF THE CONTRACTOR.
 2. CONTRACTOR SHALL COORDINATE WITH CITY OF GALESBURG STREET DEPARTMENT FOR REMOVAL AND REPLACEMENT OF STREET SIGNS. CONTACT JUSTIN MCNAUGHT AT 309-345-3640.
 3. ALL EXISTING CURB WALL TO REMAIN UNLESS SHOWN AS REMOVAL IN PLANS. ANY DAMAGE TO EXISTING CURB WALL TO REMAIN SHALL BE REPAIRED AT THE CONTRACTOR'S EXPENSE.
 4. ALL DRIVEWAYS ARE 22' WIDE AT THE BACK OF CURB AND 12' WIDE AT THE SIDEWALK UNLESS OTHERWISE NOTED
 5. SEE WATER MAIN SHEETS FOR ALL INFORMATION AND LOCATIONS FOR ASSOCIATED WORK.

LEGEND

- PCC PVT
- HMA BC/SC
- 6" PCC DWY PAVT
- 8" PCC DWY PAVT
- HMA DRIVEWAY PVT
- 4" PCC SW
- 6" PCC SW
- 8" PCC SW
- HMA SIDEWALK
- REMOVE/RELAY BR SW
- PROP CCC&G
- TEMP EASEMENT
- R O W
- PROPERTY LINES
- PHONE PEDISTAL
- POWER POLE
- GUY WIRE
- SAN

REVISD 5/19/20



PLAN & PROFILE SHEET 8
 STAGE 4: STA. 34+25 TO 37+75
 SEMINARY STREET RECONSTRUCTION
 SECTION #17-00501-28-RP

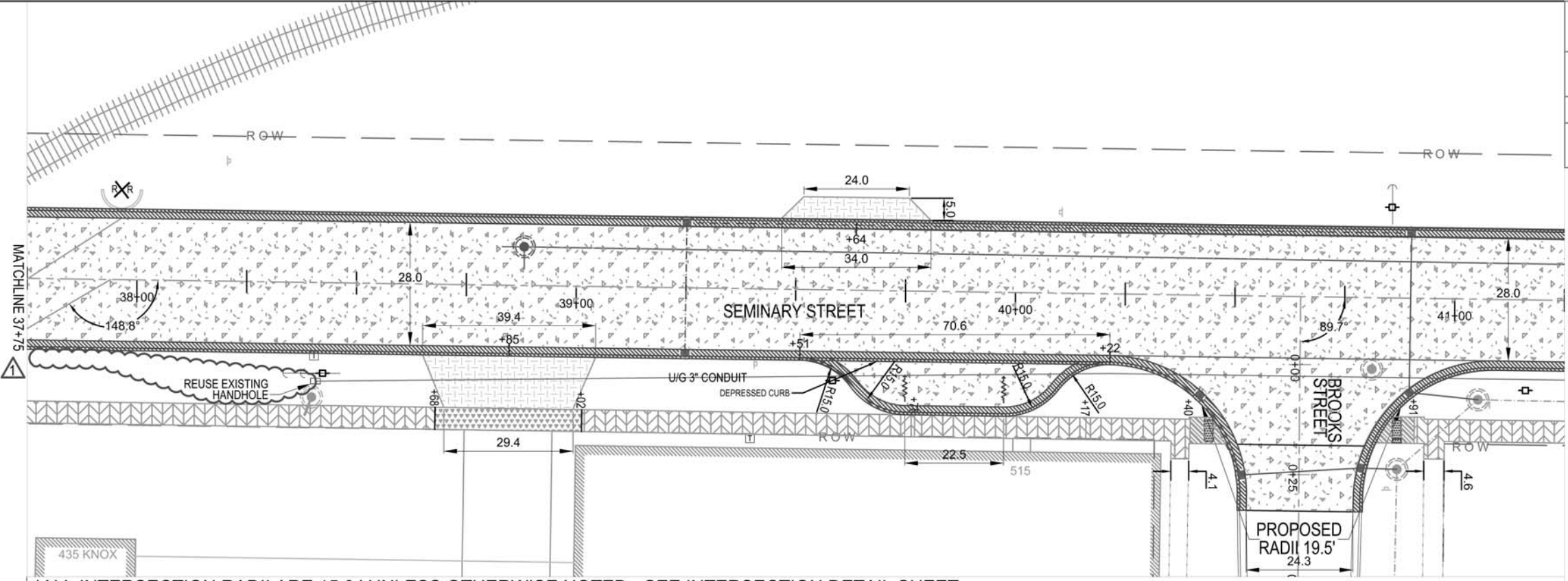
EXIST
 PROP

| F.A.U. ROUTE | SECTION # | TOTAL SHEETS | SHEET NO. |
|--------------|----------------|--------------|-----------|
| 6801 | 17-00501-28-RP | 110 | 26 |

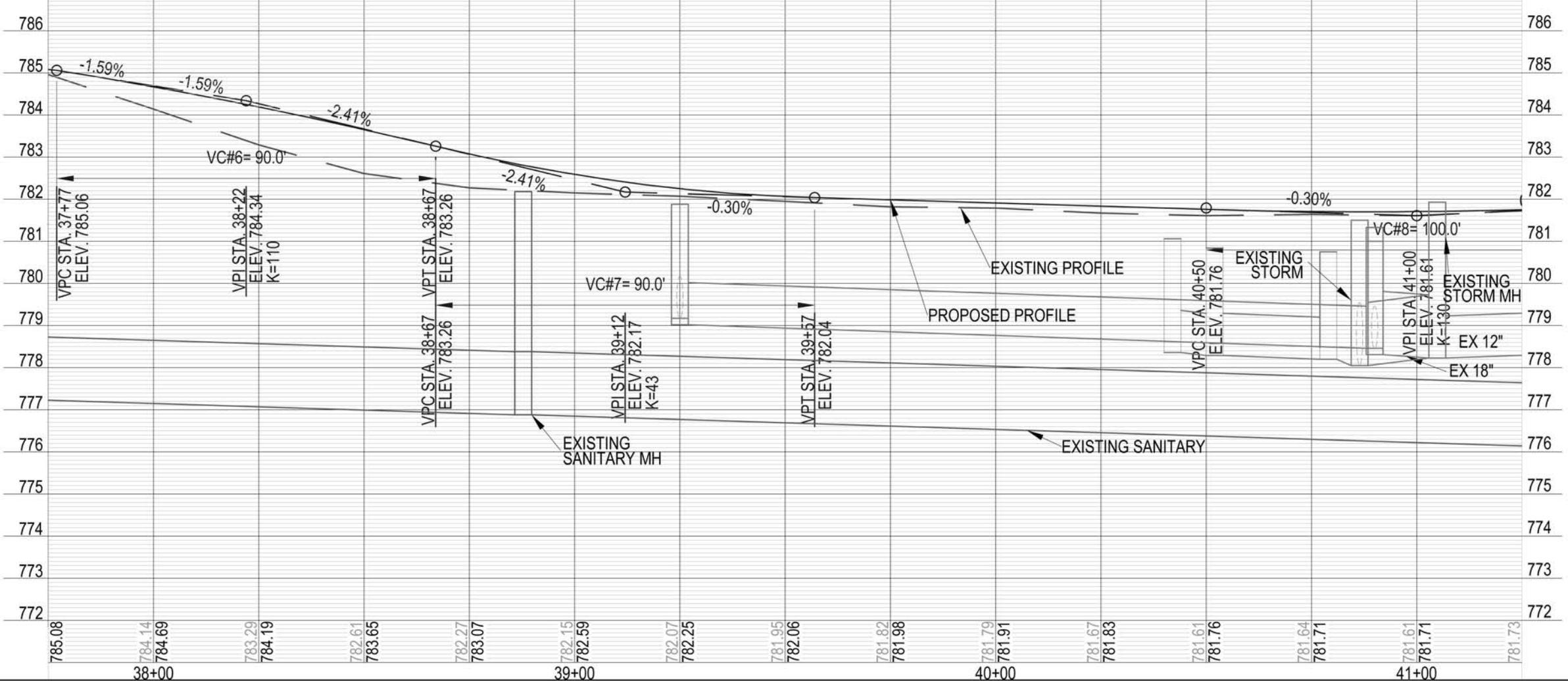
CONTRACT NO. 89738



- NOTES:
1. CONTRACTOR SHALL NOTE LOCATION OF EXISTING PROPERTY PINS (PP). ANY PINS THAT ARE REMOVED DURING CONSTRUCTION SHALL BE REPLACED AT THE EXPENSE OF THE CONTRACTOR.
 2. CONTRACTOR SHALL COORDINATE WITH CITY OF GALESBURG STREET DEPARTMENT FOR REMOVAL AND REPLACEMENT OF STREET SIGNS. CONTACT JUSTIN MCNAUGHT AT 309-345-3640.
 3. ALL EXISTING CURB WALL TO REMAIN UNLESS SHOWN AS REMOVAL IN PLANS. ANY DAMAGE TO EXISTING CURB WALL TO REMAIN SHALL BE REPAIRED AT THE CONTRACTOR'S EXPENSE.
 4. ALL DRIVEWAYS ARE 22' WIDE AT THE BACK OF CURB AND 12' WIDE AT THE SIDEWALK UNLESS OTHERWISE NOTED
 5. SEE WATER MAIN SHEETS FOR ALL INFORMATION AND LOCATIONS FOR ASSOCIATED WORK.



*ALL INTERSECTION RADII ARE 15.0' UNLESS OTHERWISE NOTED - SEE INTERSECTION DETAIL SHEET



LEGEND

- PCC PVT
- HMA BC/SC
- 6" PCC DWY PAVT
- 8" PCC DWY PAVT
- HMA DRIVEWAY PVT
- 4" PCC SW
- 6" PCC SW
- 8" PCC SW
- HMA SIDEWALK
- REMOVE/RELAY BR SW
- PROP CCC&G
- TEMP EASEMENT
- ROW
- PROPERTY LINES
- PHONE PEDISTAL
- POWER POLE
- GUY WIRE
- SAN

REVISD 5/19/20

PLAN & PROFILE SHEET 9
 STAGE 4X: STA.37+75 TO 41+25
 SEMINARY STREET RECONSTRUCTION
 SECTION #17-00501-28-RP

EXIST
 PROP