

Pun for 9-2-81 Jelling

8-12-81

PLANS FOR PROPOSED FEDERAL-AID BRIDGE REPLACEMENT & REHABILITATION PROGRAM

PLAN 1 INCH = 50 FEET
PROFILE (HOR.) 1 INCH = 50 FEET
PROFILE (VERT.) 1 INCH = 5 FEET
CROSS SECTIONS 1 INCH = 5 FEET

INDEX OF SHEETS

1. INDEX OF SHEETS, SUMMARY OF QUANTITIES, TYPICAL SECTIONS AND FIELD ENTRANCE DETAIL
 2. PLAN AND PROFILE
 - 3-5. CROSS SECTIONS
 6. GENERAL PLAN AND ELEVATION OF BRIDGE
 7. SUPERSTRUCTURE
 - 8-10. SUBSTRUCTURE
 11. STEEL RAILING, TYPE S
 12. PILING DETAILS
- STANDARDS:
- 2113-2 NAME PLATES
 - 2298-5 APPLICATION OF TRAFFIC CONTROL DEVICES
 - 2299-8 DESIGN OF TRAFFIC CONTROL DEVICES
 - 2230-13 STEEL PLATE BEAM GUARD RAIL
 - 2336-3 TRAFFIC BARRIER TERMINAL TYPE 1 & 1A
 - 2340-3 " " " " TYPE 5 & 5A
 - 2300-2 FLAGMAN TRAFFIC CONTROL SIGN
 - 2302-4 APPLICATION OF TRAFFIC CONTROL DEVICES
 - 2303-5 " " " " " "
 - 2305-4 " " " " " "
 - 2307-5 " " " " " "
 - BLR 21 " " " " " "

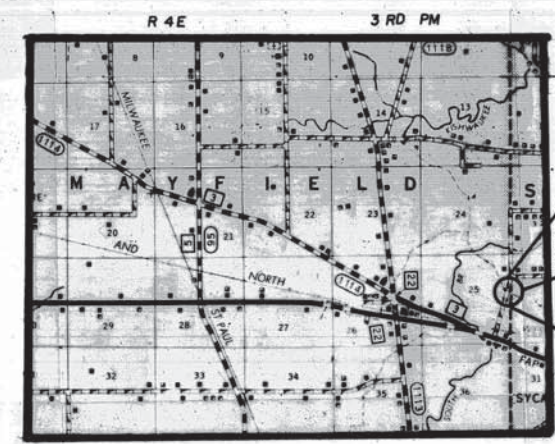
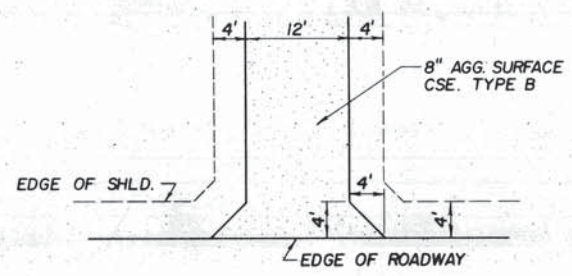
SECTION 79-09110-00-BR DEKALB COUNTY ILLINOIS PROJECT BR-OS-037(13)

SUMMARY OF QUANTITIES (CONSTRUCTION TYPE CODE X080)

ITEM	UNIT	QUANTITY
202001 EARTH EXCAVATION	CU. YD.	124
203001 CHANNEL EXCAVATION	CU. YD.	1394
207001 EMBANKMENT	CU. YD.	2430
402008 AGGREGATE SURFACE COURSE, TYPE B	TON	1299
501001 REMOVAL OF EXISTING STRUCTURES	EACH	1
504003 CLASS X CONCRETE	CU. YD.	32
505003 PRECAST PRESTRESSED CONC. DECK BEAM (17")	SQ. FT.	3444
508008 STEEL RAILING, TYPE S	LIN. FT.	246
510003 HARDWARE	POUND	2078
511025 PIPE CULVERT, TYPE 1 15"	LIN. FT.	36
511026 PIPE CULVERT, TYPE 1 18"	LIN. FT.	68
511987 REMOVE AND RELAY PIPE CULVERTS 36"	LIN. FT.	66
512001 REINFORCEMENT BARS	POUND	3800
513022 FURNISHING CONCRETE PILES	LIN. FT.	643
513028 DRIVING CONCRETE PILES	LIN. FT.	643
513042 TEST PILE CONCRETE	EACH	2
514001 NAMEPLATES	EACH	1
628031 TRAFFIC BARRIER TERMINAL TYPE I	EACH	4
X62843 TRAFFIC BARRIER TERMINAL TYPE 5A	EACH	4
505014 PRECAST CONCRETE PLANK ALTERNATE "A"	SQ. FT.	1578
XX0712 CLASS X CONCRETE FOR PLANK ALTERNATE "B"	CU. YD.	292

JOB NO. C-92-165-79

FIELD ENTRANCE DETAIL



LOCATION MAP
SCALE 1" = 1 MILE
NET LENGTH = 1420 FT. = 0.269 MI.

SECTION 79-09110-00-BR
BEGINS STATION 18+00

SECTION 79-09110-00-BR
INCLUDES A THREE-SPAN PRECAST PRESTRESSED
CONCRETE BRIDGE DECK (124'-6") ON PILE BENT
PIERS & CLOSED PRECAST CONCRETE ABUTMENTS.

SECTION 79-09110-00-BR
ENDS STATION 32+20

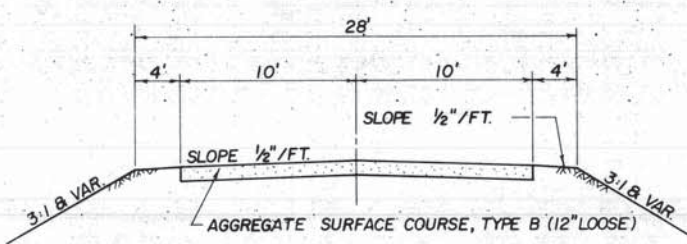
CALL J.U.L.I.E.
BEFORE YOU DIG
800-892-0123

THE ACCEPTANCE OF THIS PROJECT IS BASED ON THE MINIMUM DESIGN CRITERIA FOR A FEDERAL-AID SPECIAL BRIDGE REPLACEMENT IMPROVEMENT.

ACCEPTED JULY 23, 1981

Clifford J. Adams
DISTRICT ENGINEER OF LOCAL ROADS & STREETS

TYPICAL SECTION



CONTRACT No. 37908

PLANS PREPARED BY:

Harold P. Wendler
& Associates

DIXON, ILLINOIS
PRINCETON, ILLINOIS



STATE OF ILLINOIS
DEPARTMENT OF TRANSPORTATION

SUBMITTED MARCH 3, 1980

Clifford J. Adams
LOCAL AGENCY REPRESENTATIVE

PASSED JULY 23, 1981

Clifford J. Adams
DISTRICT ENGINEER OF LOCAL ROADS & STREETS

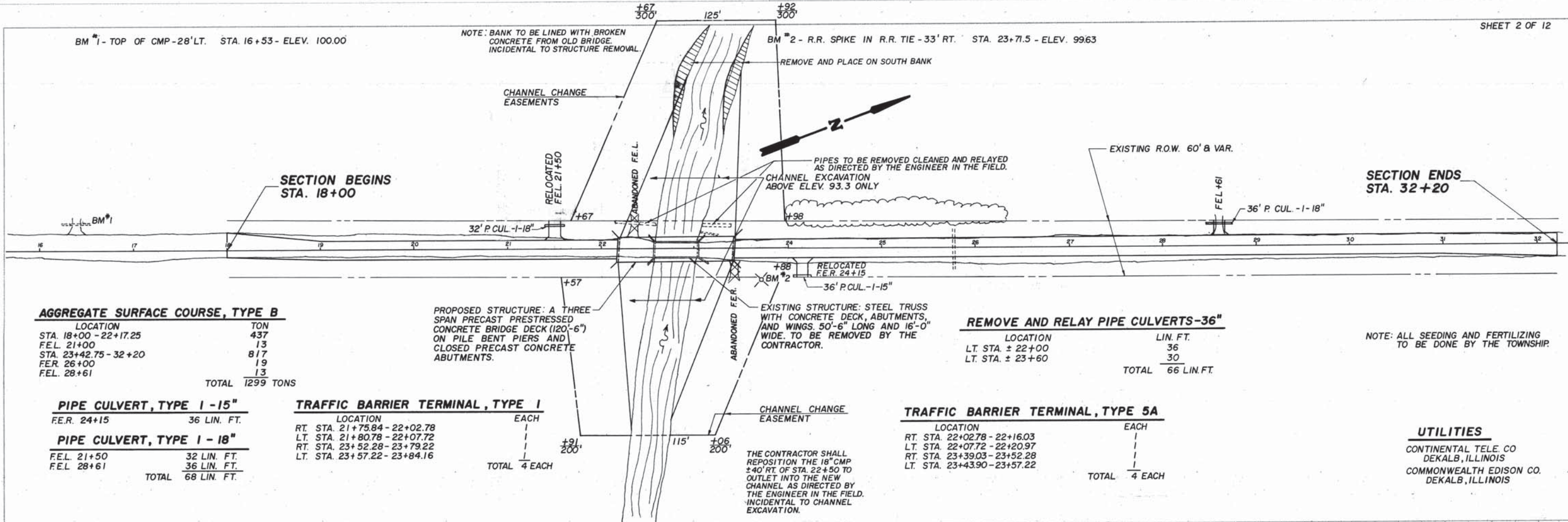
APPROVED JULY 23, 1981

Clifford J. Adams
DISTRICT ENGINEER

BM #1 - TOP OF CMP-28' LT. STA. 16+53 - ELEV. 100.00

NOTE: BANK TO BE LINED WITH BROKEN CONCRETE FROM OLD BRIDGE INCIDENTAL TO STRUCTURE REMOVAL.

BM #2 - R.R. SPIKE IN R.R. TIE - 33' RT. STA. 23+71.5 - ELEV. 99.63



AGGREGATE SURFACE COURSE, TYPE B

LOCATION	TON
STA. 18+00 - 22+17.25	437
FEL. 21+00	13
STA. 23+42.75 - 32+20	817
FEL. 26+00	19
FEL. 28+61	13
TOTAL	1299 TONS

PROPOSED STRUCTURE: A THREE SPAN PRECAST PRESTRESSED CONCRETE BRIDGE DECK (120'-6") ON PILE BENT PIERS AND CLOSED PRECAST CONCRETE ABUTMENTS.

EXISTING STRUCTURE: STEEL TRUSS WITH CONCRETE DECK, ABUTMENTS, AND WINGS. 50'-6" LONG AND 16'-0" WIDE. TO BE REMOVED BY THE CONTRACTOR.

REMOVE AND RELAY PIPE CULVERTS-36"

LOCATION	LIN. FT.
LT. STA. ± 22+00	36
LT. STA. ± 23+60	30
TOTAL	66 LIN. FT.

NOTE: ALL SEEDING AND FERTILIZING TO BE DONE BY THE TOWNSHIP.

PIPE CULVERT, TYPE 1-15"

F.E.R. 24+15 36 LIN. FT.

PIPE CULVERT, TYPE 1-18"

FEL. 21+50 32 LIN. FT.
FEL. 28+61 36 LIN. FT.
TOTAL 68 LIN. FT.

TRAFFIC BARRIER TERMINAL, TYPE 1

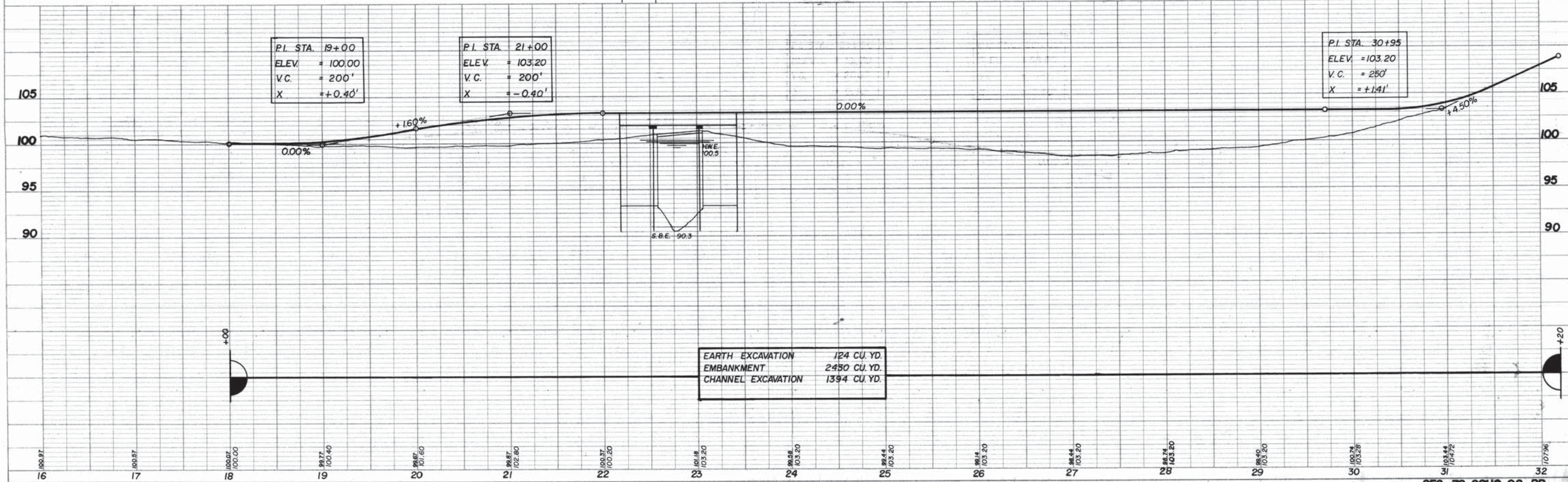
LOCATION	EACH
RT. STA. 21+75.84 - 22+02.78	1
LT. STA. 21+80.78 - 22+07.72	1
RT. STA. 23+52.28 - 23+79.22	1
LT. STA. 23+57.22 - 23+84.16	1
TOTAL	4 EACH

TRAFFIC BARRIER TERMINAL, TYPE 5A

LOCATION	EACH
RT. STA. 22+02.78 - 22+16.03	1
LT. STA. 22+07.72 - 22+20.97	1
RT. STA. 23+39.03 - 23+52.28	1
LT. STA. 23+43.90 - 23+57.22	1
TOTAL	4 EACH

UTILITIES

CONTINENTAL TELE. CO
DEKALB, ILLINOIS
COMMONWEALTH EDISON CO.
DEKALB, ILLINOIS



EARTH EXCAVATION 124 CU. YD.
EMBANKMENT 2450 CU. YD.
CHANNEL EXCAVATION 1394 CU. YD.

BENCHMARK: RR SPIKE IN RR TIE
 33' RT. STA. 23+71.5 ELEV. 99.63
 EXISTING STRUCTURE: STEEL TRUSS WITH CONCRETE
 DECK, ABUTMENTS & WINGS
 SALVAGE: SEE SPECIAL PROVISIONS

GENERAL NOTES

THE CONTRACTOR SHALL DRIVE ONE TEST PILE IN THE SOUTH ABUTMENT AND ONE IN PIER NO. 2, AS DIRECTED BY THE ENGINEER, BEFORE ORDERING THE REMAINDER OF PILES.

ALL TRANSVERSE TIE ASSEMBLIES (NUTS, BOLTS AND WASHERS) SHALL BE HOT DIPPED GALVANIZED IN ACCORDANCE WITH A.S.T.M. DESIGNATION A-153.

LIFTING LOOPS SHALL BE 5/8" DIAMETER, 6 X 25 CLASS WIRE ROPE WITH FIBER CORE AND SHALL HAVE A MINIMUM ULTIMATE TENSILE STRENGTH OF 33,000 LBS.

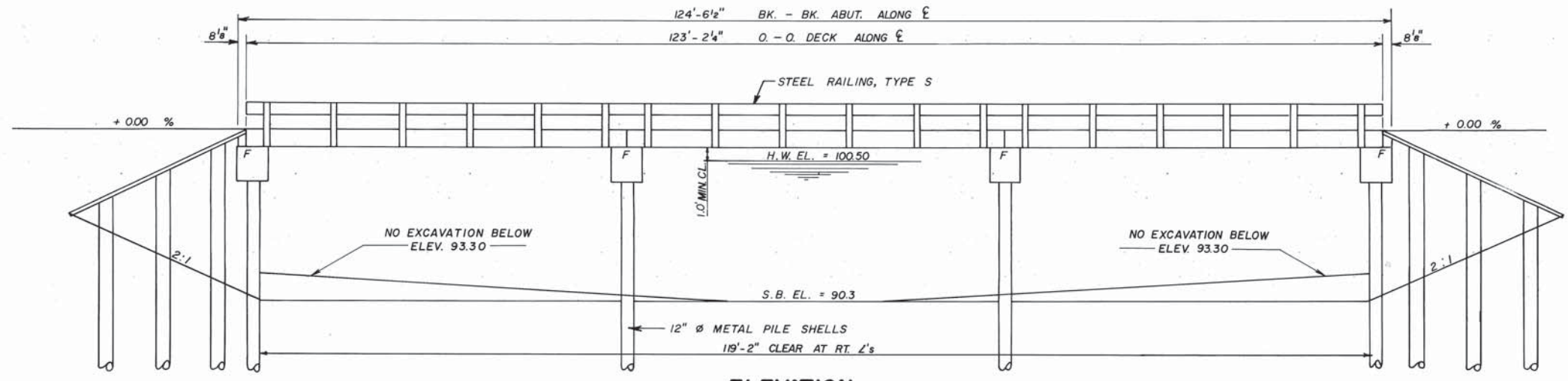
CLASS "X" CONCRETE SHALL BE USED IN ABUTMENT AND PIER CAPS.

THE CONTRACTOR SHALL CLEAN OUT THE CHANNEL WITHIN THE RIGHT-OF-WAY AS SHOWN IN ELEVATION. COST WILL BE INCIDENTAL TO CHANNEL EXCAVATION

NO BACKFILL SHALL BE PLACED BEHIND THE ABUTMENTS UNTIL THE DECK BEAMS ARE IN PLACE AND THE DOWELS ARE GROUTED.

ALL EXPOSED PORTIONS OF THE METAL SHELL PILING AND STRUCTURAL STEEL SHALL BE PAINTED WITH THE BASIC LEAD SILICO CHROMATE PAINT SYSTEM IN ACCORDANCE WITH APPLICABLE PORTIONS OF SEC. 509 AND 712.2B OF THE STANDARD SPECIFICATIONS.

FOR BORING DATA, SEE SPECIAL PROVISIONS.

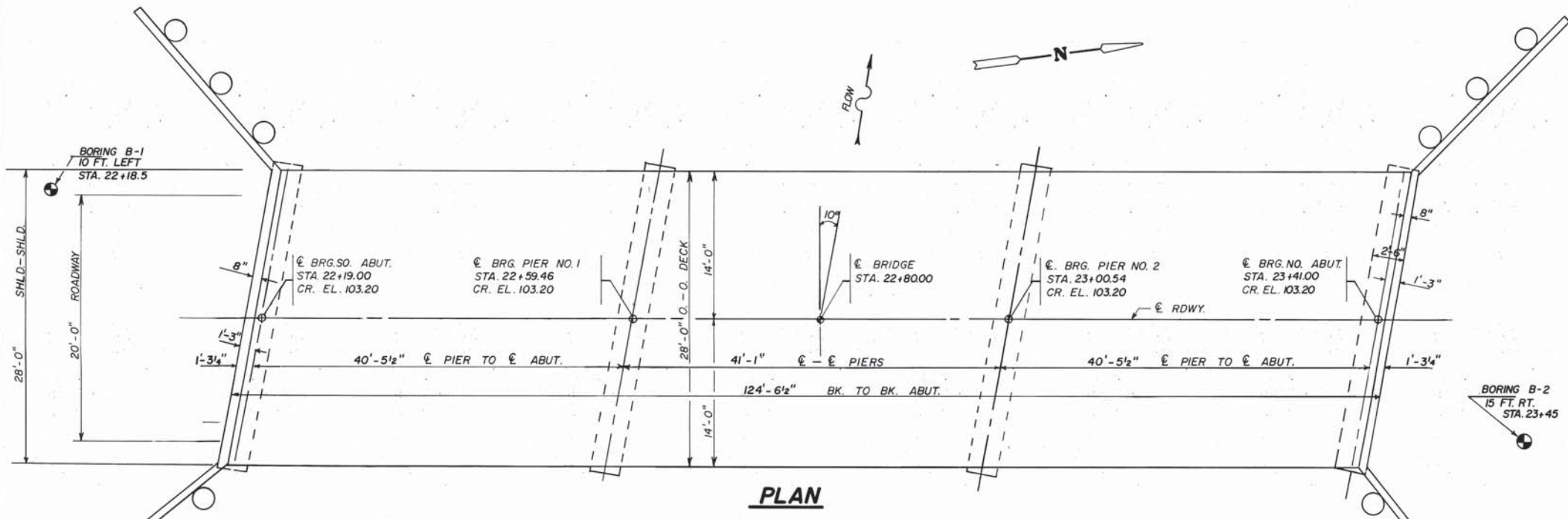


ELEVATION

BILL OF MATERIAL

BRIDGE

ITEM	UNIT	SUBT	SUPER	TOTAL
CLASS X CONCRETE	CU. YDS.	32.0		32.0
REINFORCEMENT BARS	LBS.	3800		3800
PREC. PRESTR. CONC. DECK BEAMS (17" DEPTH)	SQ. FT.		3444	3444
STEEL RAILING, TYPE S	LIN. FT.		246	246
HARDWARE	LBS.	2078		2078
FURNISHING CONCRETE PILES	LIN. FT.	643		643
DRIVING CONCRETE PILES	LIN. FT.	643		643
TEST PILES - CONCRETE	EACH	2		2
NAME PLATES	EACH		1	1
REMOVAL OF EXISTING STRUCTURE	EACH			1
ALTERNATE "A"				
PRECAST CONCRETE PLANK 6"	SQ. FT.	1578		1578
ALTERNATE "B"				
CLASS X CONCRETE FOR PLANK	CU. YD.	29.2		29.2



PLAN

WATERWAY INFORMATION

DRAINAGE AREA	120	SQ. MI.
DESIGN DISCHARGE (15 YEAR)	4200	C.F.S.
EXISTING OPENING	400	SQ. FT.
REQUIRED OPENING (15 YEAR)	994	SQ. FT.
PROVIDED OPENING (15 YEAR)	994	SQ. FT.
CREATED HEAD FOR DESIGN FLOOD	0.4	FEET
100 YEAR DISCHARGE	6200	C.F.S.
CREATED HEAD FOR 100 YEAR FLOOD	0.5	FEET
HIGH WATER ELEV. (100 YEAR FLOOD)	101.2	FEET

DESIGN STRESSES

PRESTRESSED UNITS	FIELD UNITS
f _c = 5,000 P.S.I.	f _c = 1,400 P.S.I.
f _{'ci} = 4,100 P.S.I.	f _s = 20,000 P.S.I.
f _s = 270,000 P.S.I.	n = 9
f _{si} = 189,000 P.S.I.	

DESIGN SPECIFICATIONS 1977 AASHTO AND 1978 & 1979 INTERIMS

APPROVED

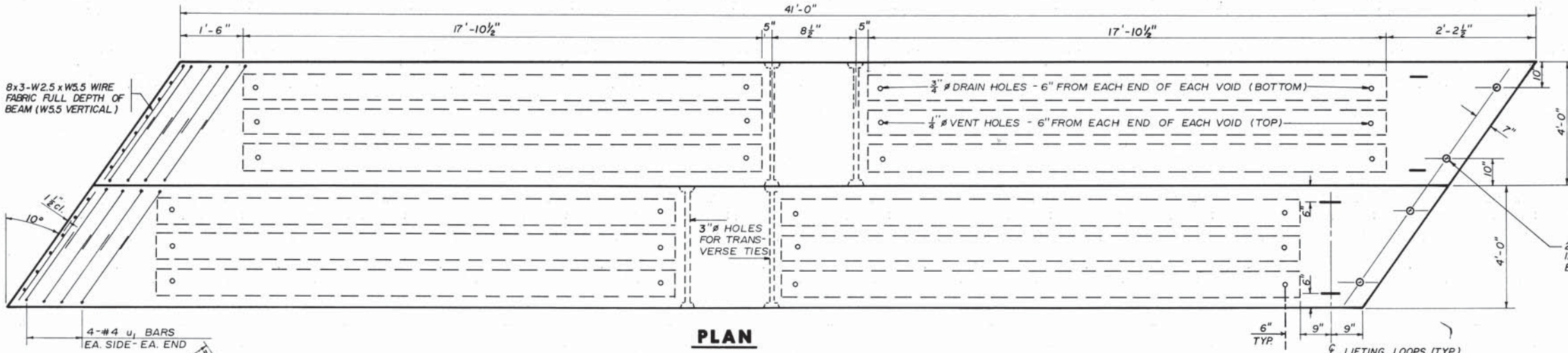
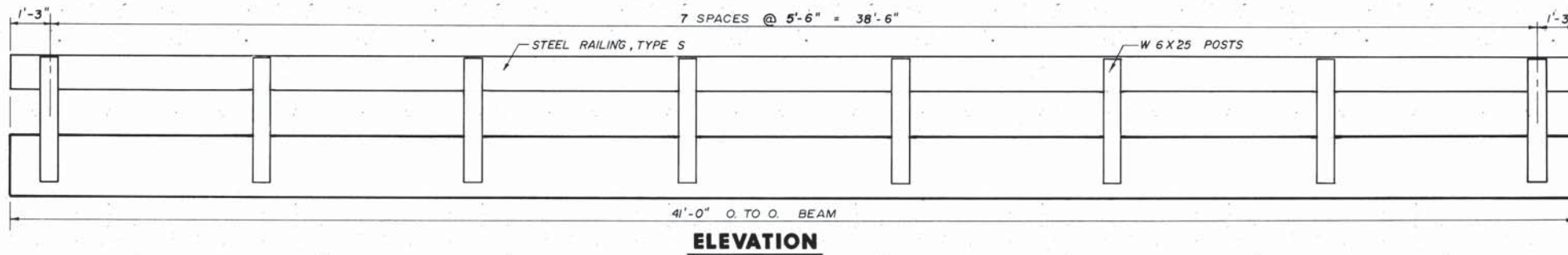
Harold J. Winkler
10-18-79

LETTERING FOR NAME PLATE

SEE STD. 2113

GENERAL PLAN AND ELEVATION
SECTION 79-09110-00-BR
 MAYFIELD ROAD DISTRICT
 DEKALB COUNTY

LOADING HS 20-44



GENERAL NOTES

PRESTRESSING STEEL SHALL BE NON-MYANIZED HIGH STRENGTH STRESS-RELIEVED 7-WIRE STRAND, GRADE 270. THE NOMINAL DIAMETER SHALL BE 1/2" AND THE NOMINAL CROSS-SECTIONAL AREA SHALL BE 0.196 SQUARE INCH.

THE 1" ϕ RODS IN THE TRANSVERSE TIE ASSEMBLY SHALL BE TIGHTENED TO A SNUG FIT AND THE THREADS SET.

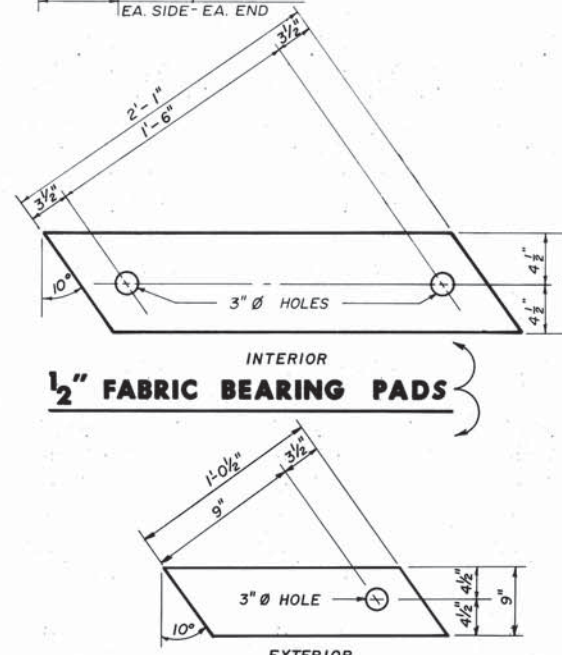
POCKETS THAT RECEIVE TRANSVERSE TIE BAR ON OUTSIDE BEAM SHALL BE FILLED WITH GROUT AFTER TRANSVERSE TIE ASSEMBLY IS IN PLACE.

LONGITUDINAL SHEAR KEYS SHALL BE FILLED WITH A FLOWABLE, NON SHRINK, NON METALLIC GROUT. SEE SPECIAL PROVISIONS.

DOWEL BARS SHALL BE DRILLED AND GROUTED IN PLACE AFTER BEAMS HAVE BEEN ERECTED.

COST OF REINFORCEMENT AND ACCESSORIES CASTED INTO BEAM, OF BEARING PADS, OF FURNISHING AND ASSEMBLING TRANSVERSE TIES, OF FURNISHING, DRILLING AND GROUTING DOWEL HOLES, AND OF GROUTING LONGITUDINAL SHEAR KEYS IS INCLUDED IN UNIT PRICE BID FOR "PRECAST PRESTRESSED CONCRETE BRIDGE DECK."

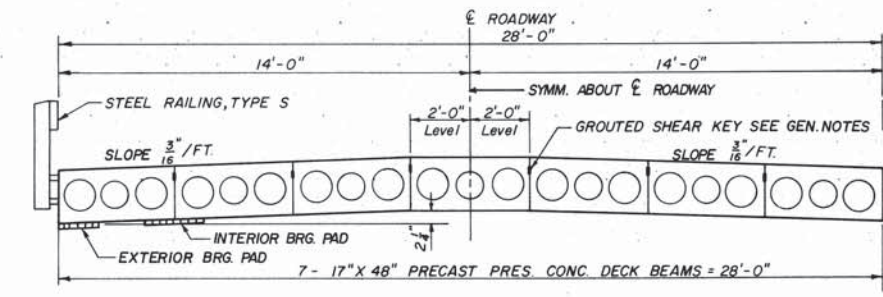
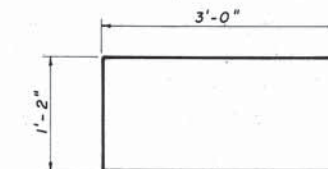
REINFORCEMENT BARS SHALL CONFORM TO AASHTO M-31 OR M-53 GRADE 60.



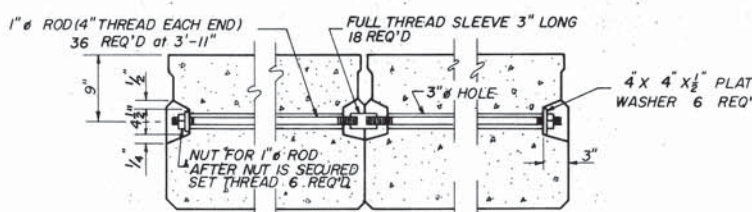
DETAIL OF LIFTING LOOP

LIFTING LOOPS SHALL BE 6X25 CLASS WIRE 3/8" ROPE WITH FIBER CORE, MIN. ULTIMATE TENSILE STRENGTH SHALL BE 33,000 LBS. EACH BEAM SHALL HAVE FOUR LIFTING LOOPS, TWO CAST IN EACH END AS SHOWN. LOOPS SHALL BE BURNED OFF AFTER BEAMS HAVE BEEN ERECTED.

BAR U₁



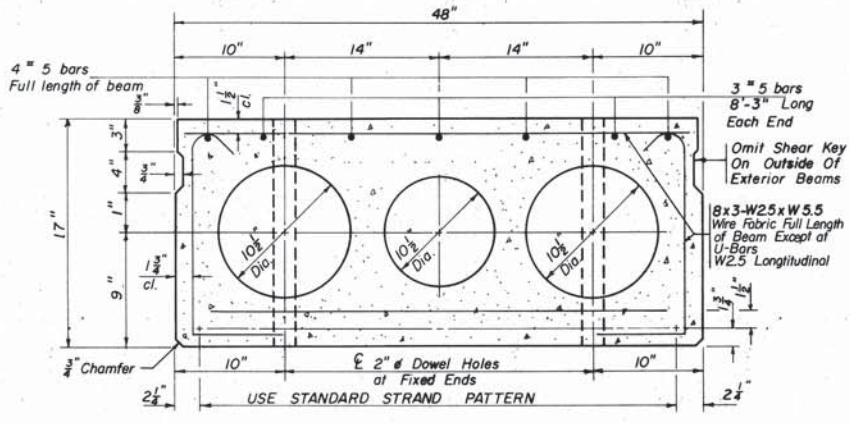
TYPICAL CROSS SECTION



TRANSVERSE TIE ASSEMBLY

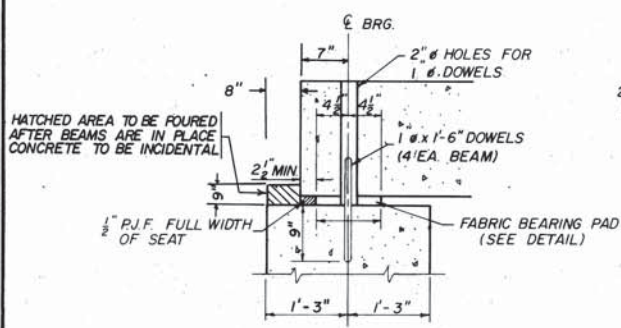
BILL OF MATERIALS- SUPERSTRUCTURE

PRECAST PRESTRESSED CONCRETE DECK BEAMS, 17" DEPTH	3444 SQ. FT.
STEEL RAILING, TYPE S	246 LIN. FT.

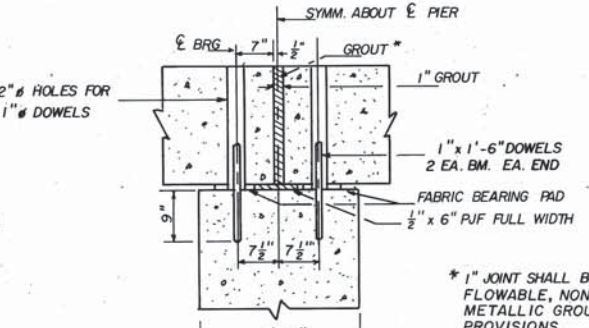


TYPICAL SECTION THRU 17" X 48" BEAM

15-7 WIRE 1/2" STRANDS. EACH STRAND STRESSED TO 28,900 LBS. 9 STRANDS 1 3/4" UP. 6 STRANDS 3/4" UP. PLACE STRANDS SYMMETRICAL ABOUT ϕ BEAM



SECTION THRU ABUTMENTS AT RIGHT ANGLES

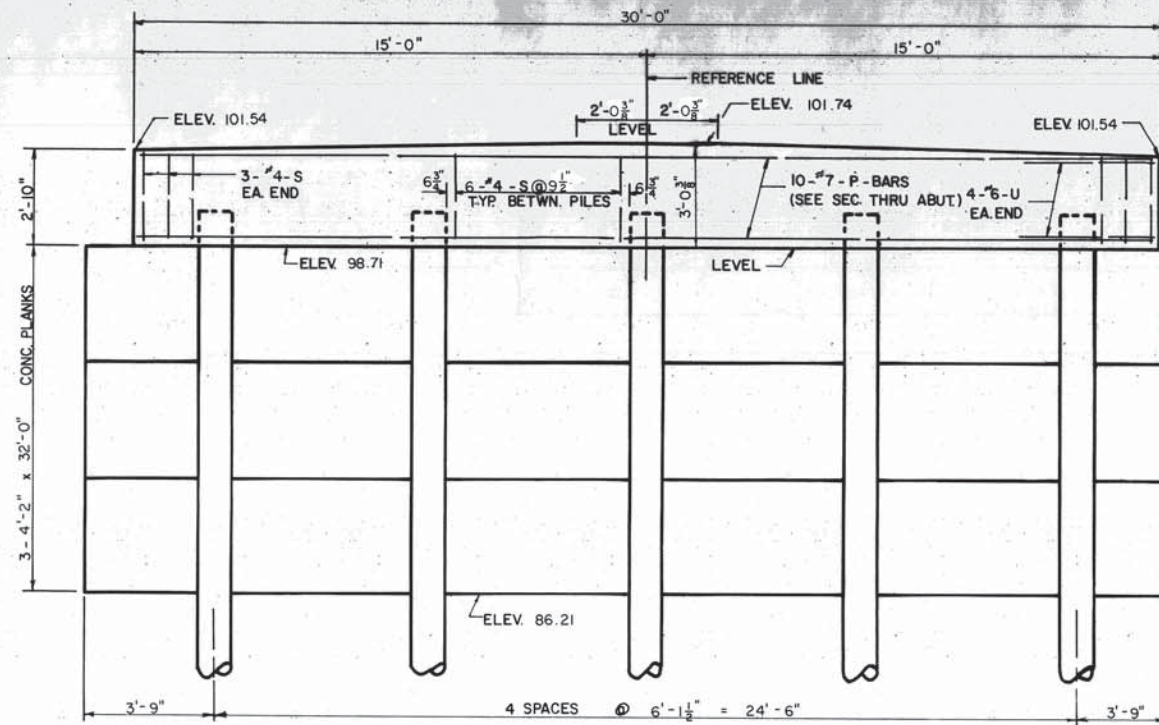


SECTION THRU PIERS AT RIGHT ANGLES

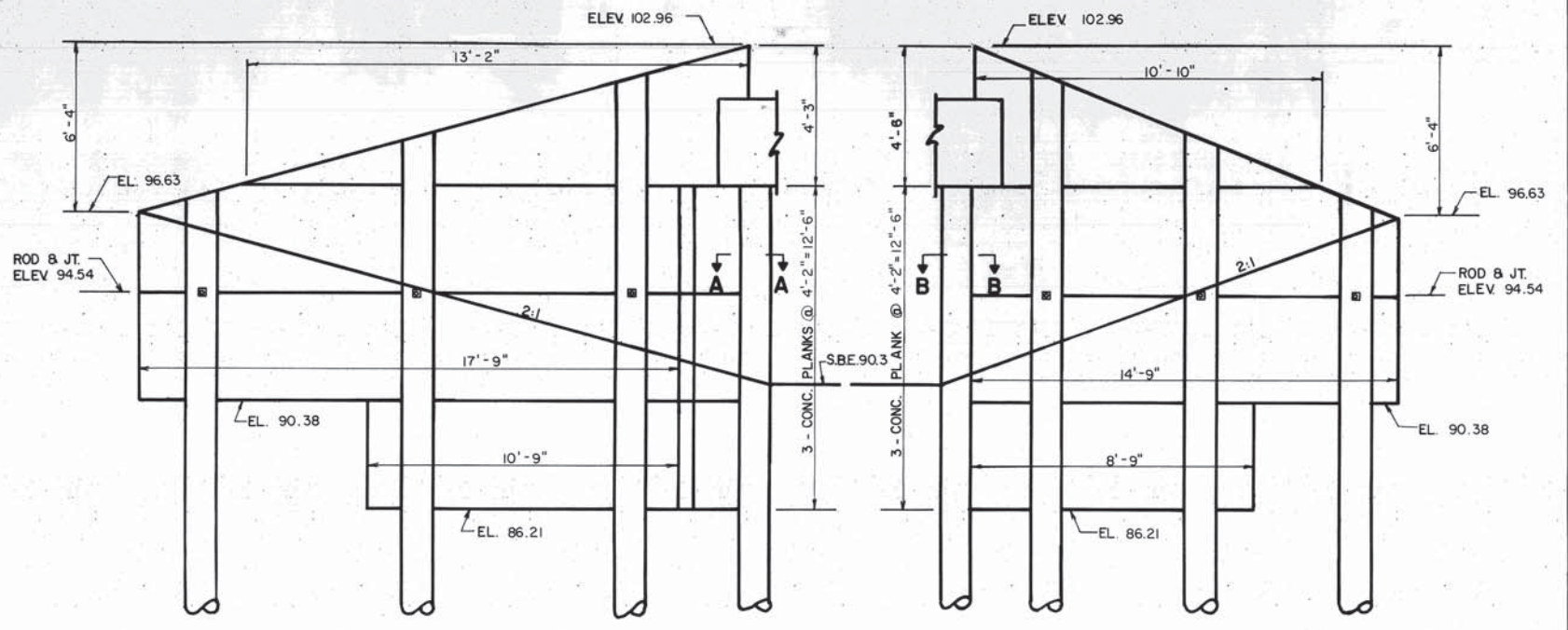
* 1" JOINT SHALL BE PACKED WITH A FLOWABLE, NON SHRINK, NON METALLIC GROUT, SEE SPECIAL PROVISIONS.

SUPERSTRUCTURE SECTION 79-09110-00-BR MAYFIELD ROAD DISTRICT DEKALB COUNTY

NOTE: TOP PLANKS SHALL NOT BE SET UNTIL DECK IS IN PLACE.

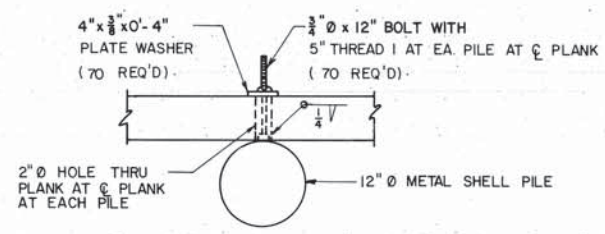


ABUTMENT ELEVATION
ALL HORIZONTAL DIMENSIONS ALONG ϕ CAP

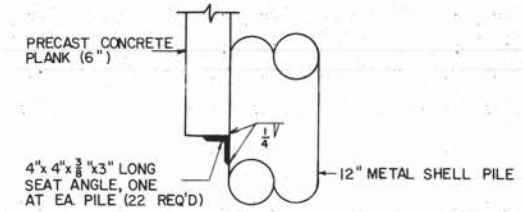


LONG WINGWALL ELEVATION
ALL HORIZONTAL DIMENSIONS ARE ALONG OUTSIDE FACE OF PLANK.

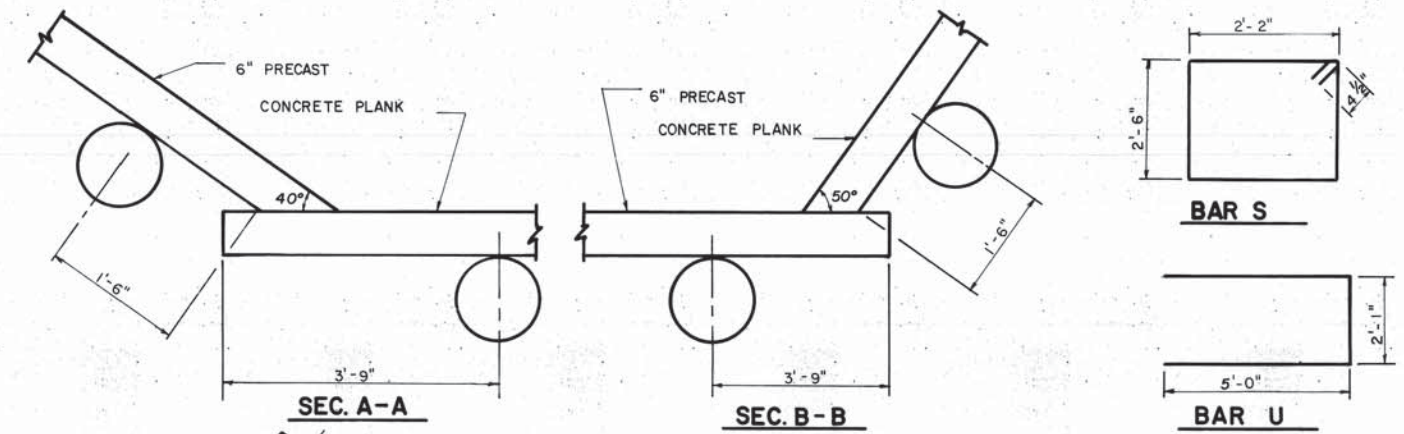
SHORT WINGWALL ELEVATION
ALL HORIZONTAL DIMENSIONS ARE ALONG OUTSIDE FACE OF PLANK.



PLANK ANGLE DETAIL



SEAT ANGLE DETAIL

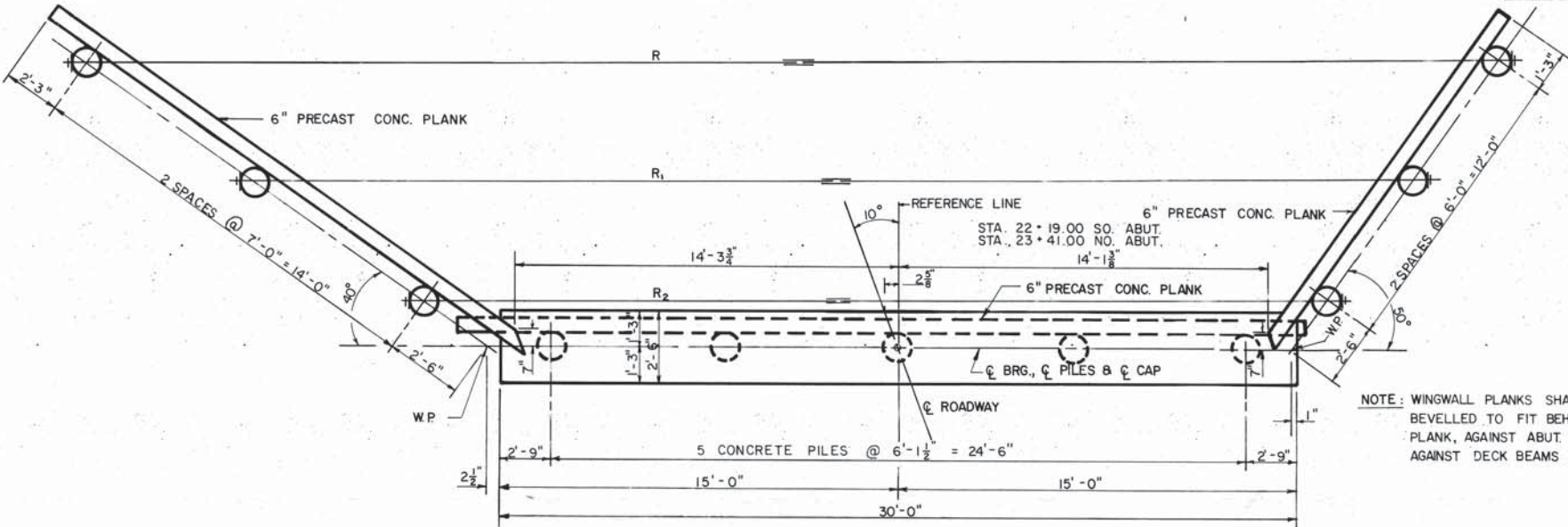


SEC. A-A

SEC. B-B

BAR S

BAR U



PLAN

PILE DATA 2-ABUTS.

TYPE	ABUT & WING - CONCRETE
NO. REQ'D	ABUT - 9 + 1 TEST PILES WINGS - 12 PILES
CAPACITY	ABUT - 30 TONS WINGS - 24 TONS
EST. LENGTH	N. ABUT - 30 FEET* S. ABUT - 20 FEET* WINGS - 10' BELOW STREAMBED

* OR 40 TON CAPACITY IF ACHIEVED FIRST.

BILL OF MATERIALS 2 ABUTS.

BAR	NO.	SIZE	LENGTH	SHAPE
P	20	#7	29'-6"	—
S	60	#4	10'-1"	□
U	16	#6	12'-1"	□
CLASS X CONCRETE		CU YDS.	16.0	
REINFORCEMENT BARS		LBS.	1900	
FURNISHING CONCRETE PILE		LIN. FT.	463	
DRIVING CONCRETE PILES		LIN. FT.	463	
TEST PILES, CONCRETE		EACH	1	
HARDWARE		LBS.	2078	
ALTERNATE "A"				
PRECAST CONC. PLANK, 6"		SQ. FT.	1578	
ALTERNATE "B"				
CLASS X CONCRETE FOR PLANK		CU YD	29.2	

ABUTMENTS
SECTION 79-09110-00-BR
MAYFIELD ROAD DISTRICT
DEKALB COUNTY

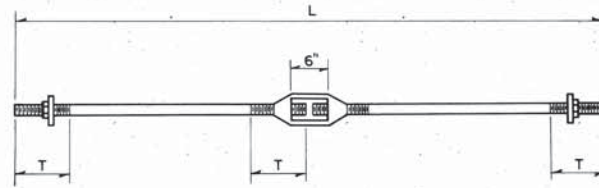
GENERAL NOTES

ALL TIE RODS SHALL BE FASTENED TO THE 12" METAL SHELL PILES BY DRILLING A HOLE THROUGH THE PILE, FOR THE ROD, AND USING A PLATE WASHER AND NUT. THE HOLE AND ROD SHALL BE PLACED NEAR THE CENTERLINE OF PILE. THE PLATE WASHERS AND NUTS ARE INCLUDED FOR PAYMENT PER POUND OF HARDWARE. ALL OTHER MATERIAL AND LABOR REQUIRED FOR THE ANCHORS SHALL BE INCIDENTAL TO THE CONTRACT.

ALL TIE RODS AND BOLTS SHALL BE IN PLACE AND PROPERLY SECURED BEFORE THE METAL SHELL PILES ARE FILLED WITH CONCRETE.

THE CONTRACTOR SHALL WELD A 4" X 4" X 3/8" ANGLE 3" LONG, AT THE BACK OF EACH PILE, AT THE BOTTOM OF PLANK BACKING, AS A SEAT SUPPORT ANGLE FOR PLANK, AS SHOWN IN DETAIL.

ALL EXPOSED PORTIONS OF PILING AND PILE ANCHORS SHALL BE PAINTED WITH THE BASIC LEAD SILICO CHROMATE PAINT SYSTEM IN ACCORDANCE WITH ARTICLES 509.0 AND 712.28 OF THE STANDARD SPECIFICATIONS.

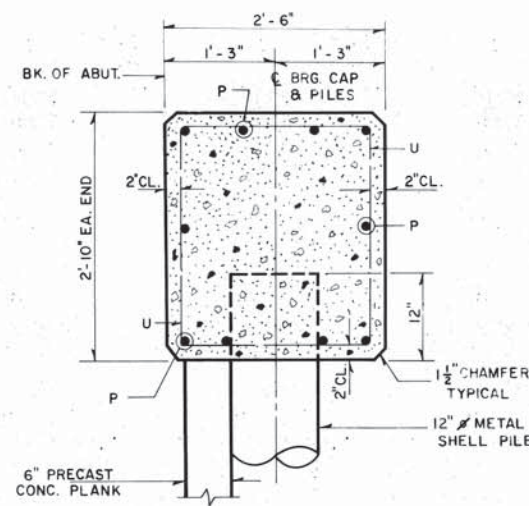


ROD DETAILS AND DIMENSIONS

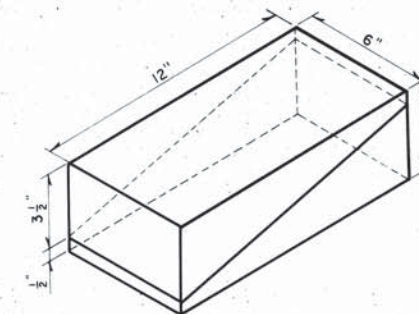
RODS	SIZE	NO.	L	T	TURN-BUCKLE	EACH ROD		
						PLATE WASHERS	NUT	
						SIZE	NO.	
R	1 1/2" Ø	2	53'-9"	9"	2	4" x 4" x 3/8"	2	2
R ₁	1 1/2" Ø	2	44'-6"	9"	2	4" x 4" x 3/8"	2	2
R ₂	1 1/2" Ø	2	35'-3"	9"	2	4" x 4" x 3/8"	2	2

BILL OF HARDWARE

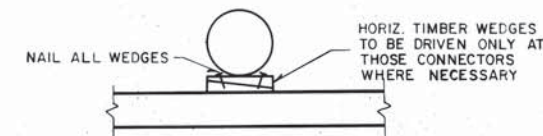
ITEM	NO.	SIZE
ROD R	2	1 1/2" Ø x 53'-9"
ROD R ₁	2	1 1/2" Ø x 44'-6"
ROD R ₂	2	1 1/2" Ø x 35'-3"
WASHERS FOR RODS	12	4" x 4" x 3/8"
NUTS FOR RODS	12	1 1/2"
TURNBUCKLES	6	1 1/2"
SEAT SUPPORT ANGLES	22	4" x 4" x 3/8" x 3"
PLANK ANCHOR BOLTS	70	3/4" Ø x 12"
WASHER FOR BOLTS	70	4" x 4" x 3/8"
NUTS FOR BOLTS	70	3/4"



SEC. THRU ABUT.

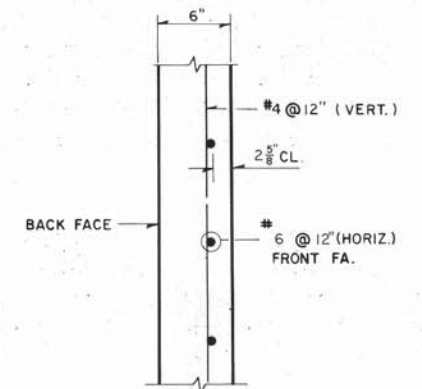


TIMBER WEDGES



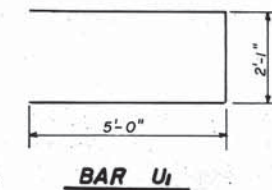
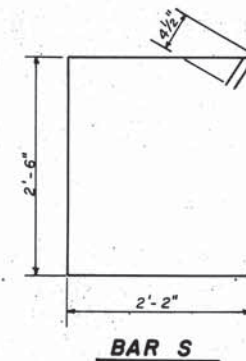
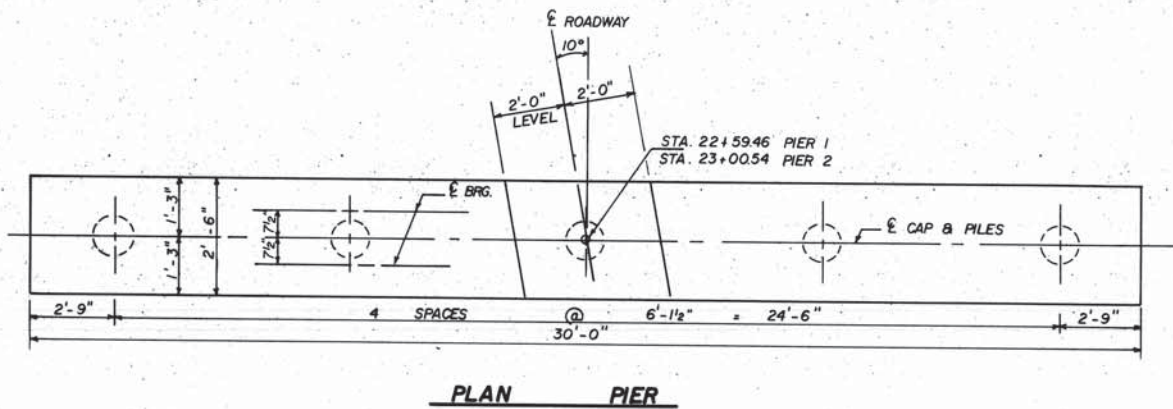
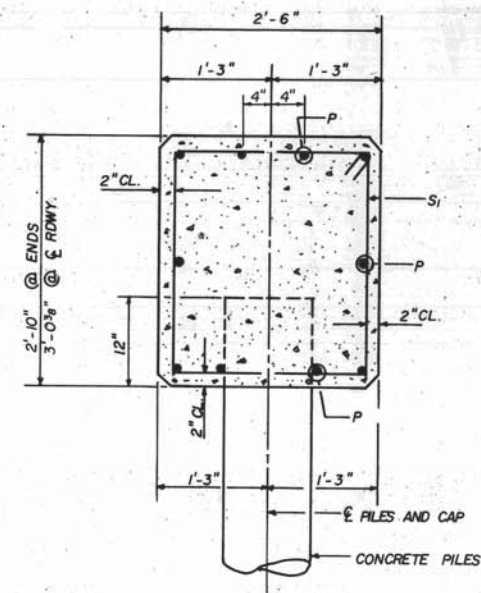
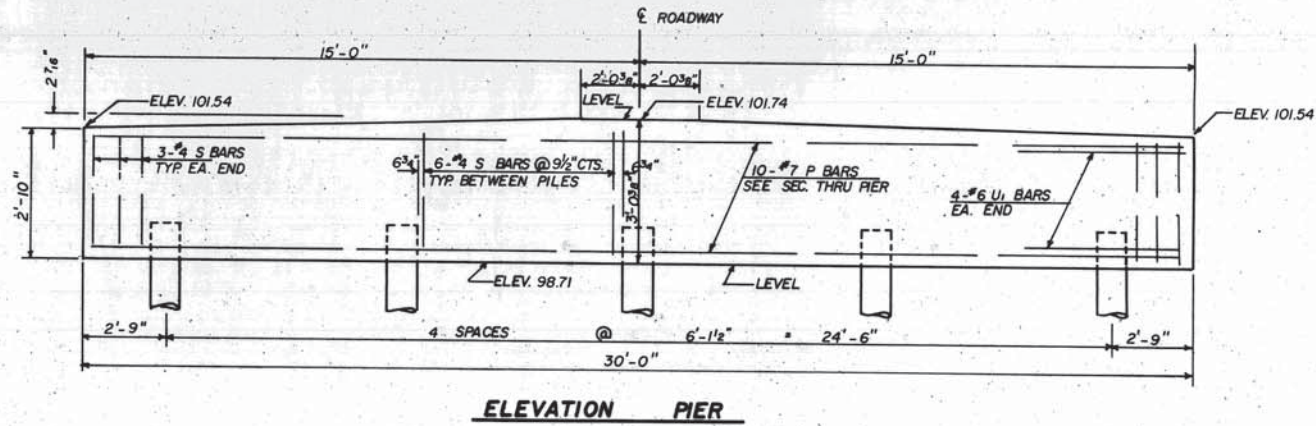
WEDGE DETAIL

THE CONTRACTOR SHALL FURNISH AND INSTALL TIMBER WEDGES AS REQUIRED TO PROPERLY FASTEN AND ALIGN CONCRETE PLANK TO PILING. THIS WORK, AND THE WEDGES SHALL BE CONSIDERED INCIDENTAL TO THE CONCRETE PLANK.



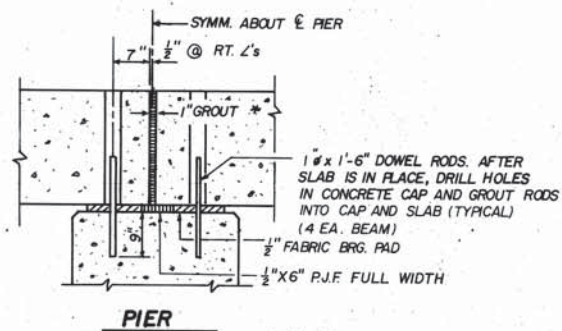
SECTION THRU ABUT. PLANK

**ABUTMENTS
SECTION 79-09110-00-BR
MAYFIELD ROAD DISTRICT
DEKALB COUNTY**



BILL OF MATERIAL 2 PIERS

BAR	NO.	SIZE	LENGTH	SHAPE
P	20	#7	29'-6"	—
S	60	#4	10'-1"	□
U ₁	16	#6	12'-1"	▭
CLASS X CONCRETE CU. YD. 16.0				
REINFORCEMENT BARS LBS. 1900				
FURN. CONCRETE PILES LIN. FT. 180				
DRIVE CONCRETE PILES LIN. FT. 180				
TEST PILES CONCRETE EACH 1				

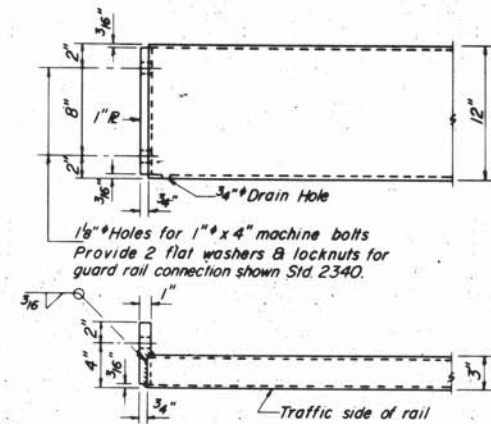
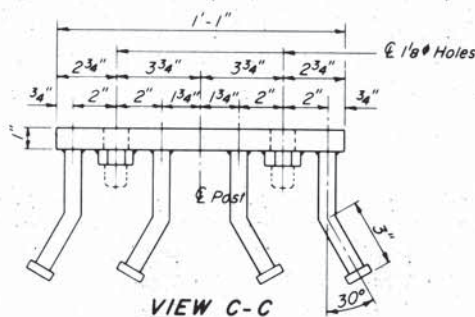
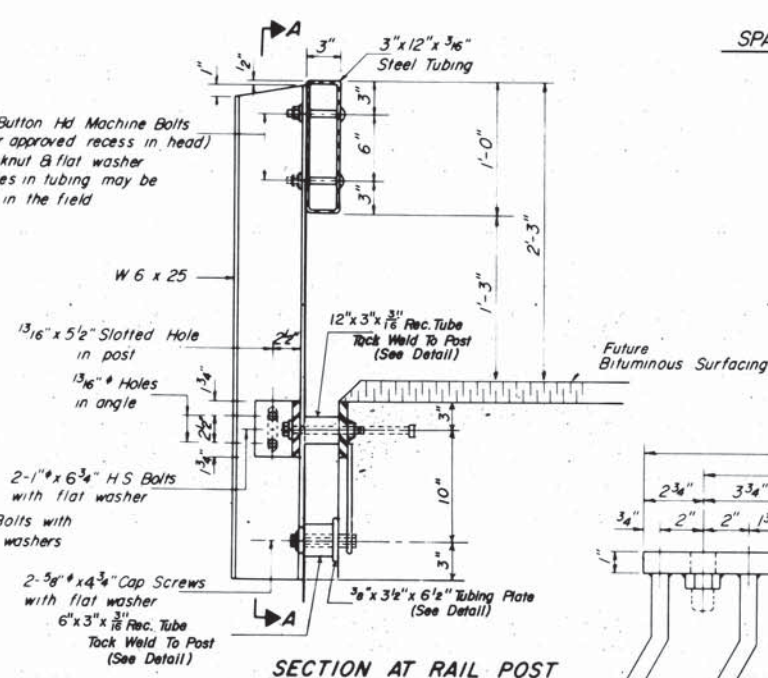
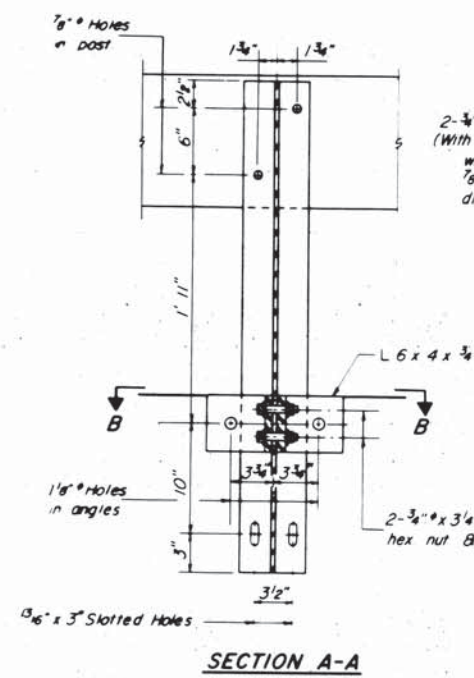
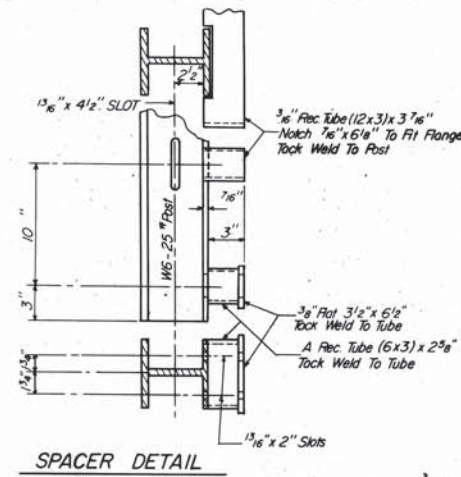


* 1" x 6" P.J.F. ALONG OUTSIDE OF EXTERIOR BEAMS
 1" JOINT SHALL BE PACKED WITH A FLOWABLE, NON SHRINK, NON METALLIC GROUT, SEE SPECIAL PROVISIONS.

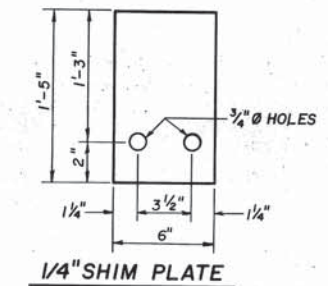
PILE DATA

	PIER 1	PIER 2
TYPE	CONCRETE	CONCRETE
CAPACITY	38 TON	38 TON
NO. REQ'D	5	4+1 TEST PILE
EST. LENGTH	20' *	20' *
* OR 40 T. BEARING WHICHEVER IS FIRST		

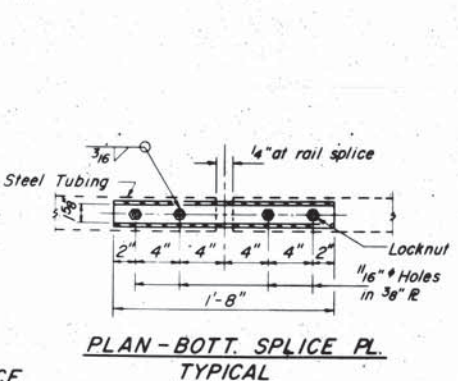
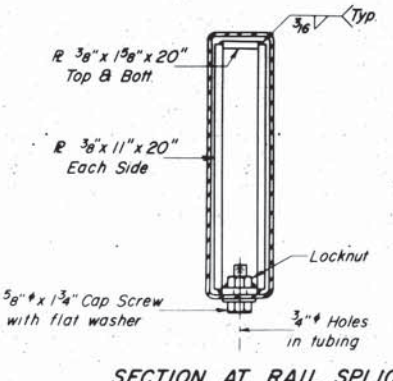
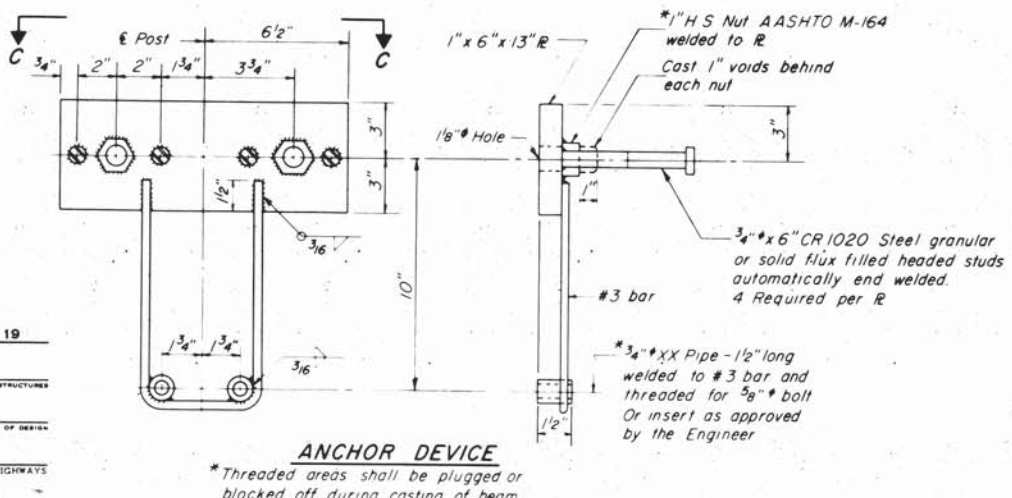
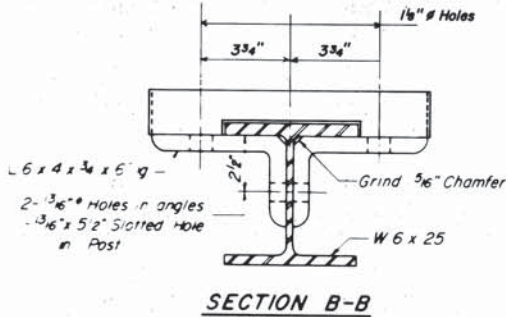
SUBSTRUCTURE - PIERS
 SECTION 79-09110-00-BR
 MAYFIELD ROAD DISTRICT
 DEKALB COUNTY



END OF RAIL DETAILS



1/4 SHIM PLATE



NOTES

Hollow structural steel tubing shall conform to the requirements of ASTM designation A-500 Grade B Structural Steel Tubing.

All other steel shapes and plates shall conform to the requirements of AASHTO M-183 except posts and angles shall conform to AASHTO M-223, Grade 50.

Bolts, cap screws, and nuts shall conform to the requirements of ASTM designation A-307 except for high strength bolts, nuts and washers noted which shall conform to AASHTO M-154.

All bolts, nuts, cap screws, washers and lock washers shall be galvanized in accordance with AASHTO M-232.

All posts, railing, rail splices, anchor devices and angles shall be galvanized after shop fabrication in accordance with AASHTO M-111 and ASTM A-365. Galvanized rail shall not be painted.

Railing shall be in accordance with Section 508 of the Standard Specifications, except as noted, and shall be paid for at the contract unit price per lineal foot for STEEL RAILING, TYPE S.

All field drilled holes shall be coated with an approved zinc rich paint before erection.

The lower portion of the spacers in contact with concrete shall receive two coats of asphalt paint conforming to Section 714.08 Type B or place 1/2 inch fabric bearing pad between the tubes and concrete.

The 3/4 inch high strength bolts used to connect the 6 x 4 x 3/4 angles to the post shall be tightened in accordance with Article 507.04(p)(3) of the Standard Specifications. The 1 inch high strength bolts connecting the angles to the concrete shall be tightened to a snug fit and given an additional 1/2 turn. The 5/8 inch cap screws in bottom of posts shall be tightened to a snug fit only.

For multi-span bridges, sufficient 1/2 x 6 x 1-5/8 galvanized steel shim, shall be provided to align rail between adjacent spans. Cost incidental to STEEL RAILING, TYPE S.

BILL OF MATERIAL

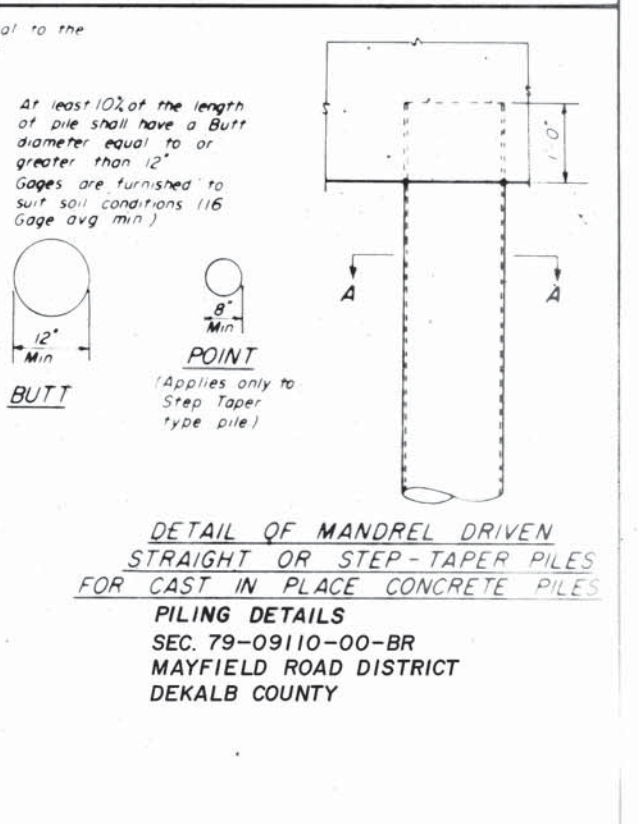
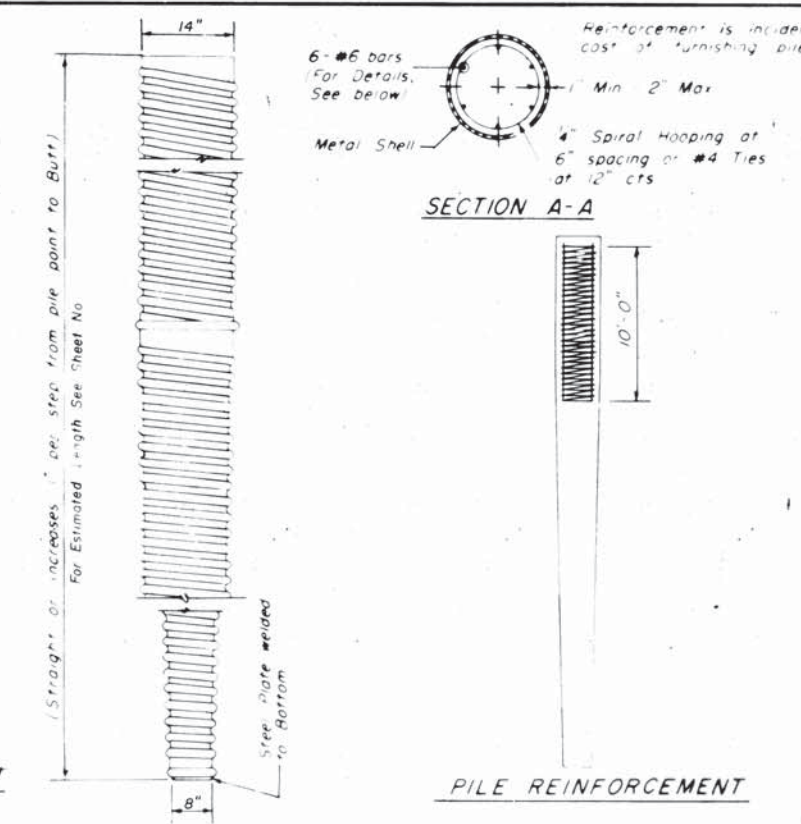
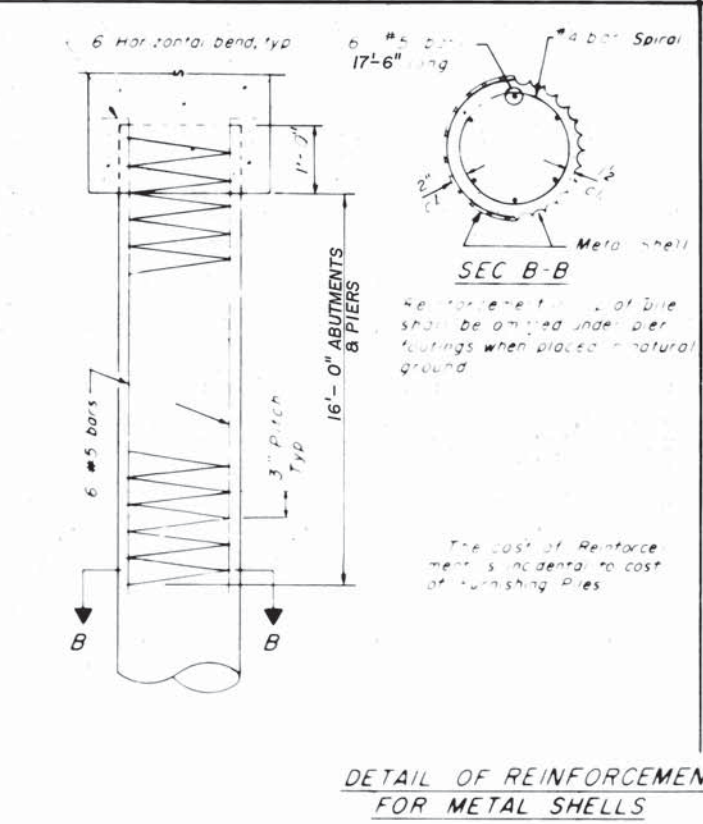
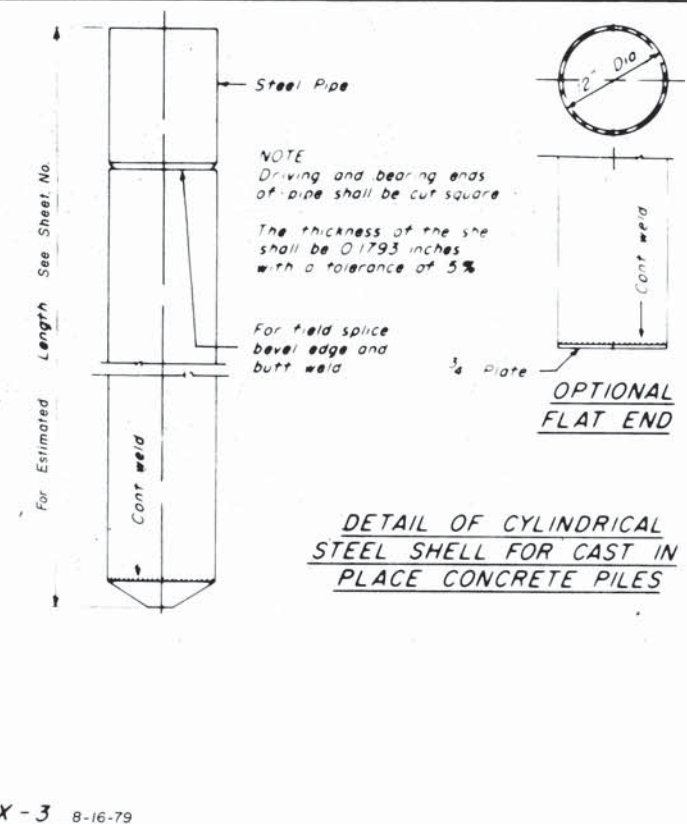
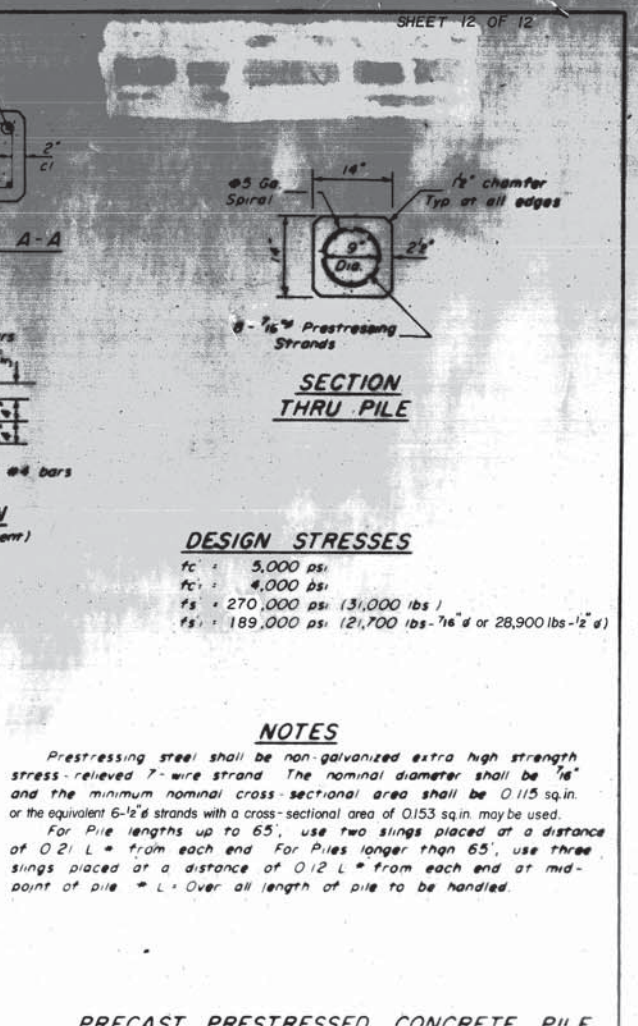
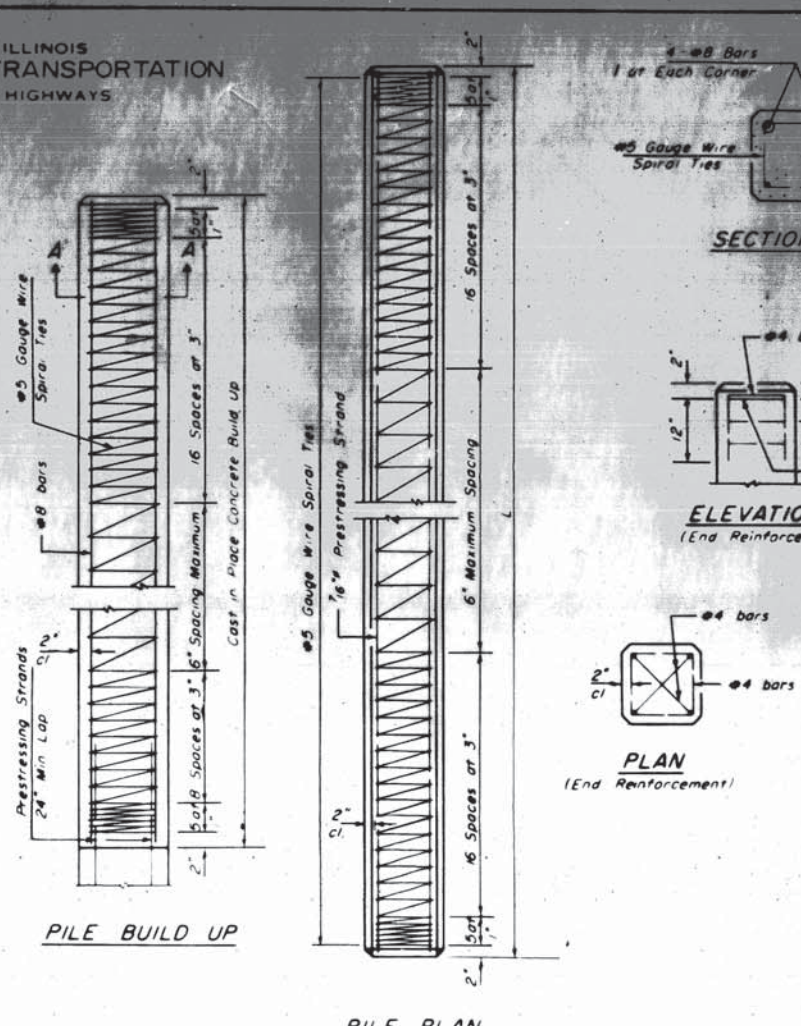
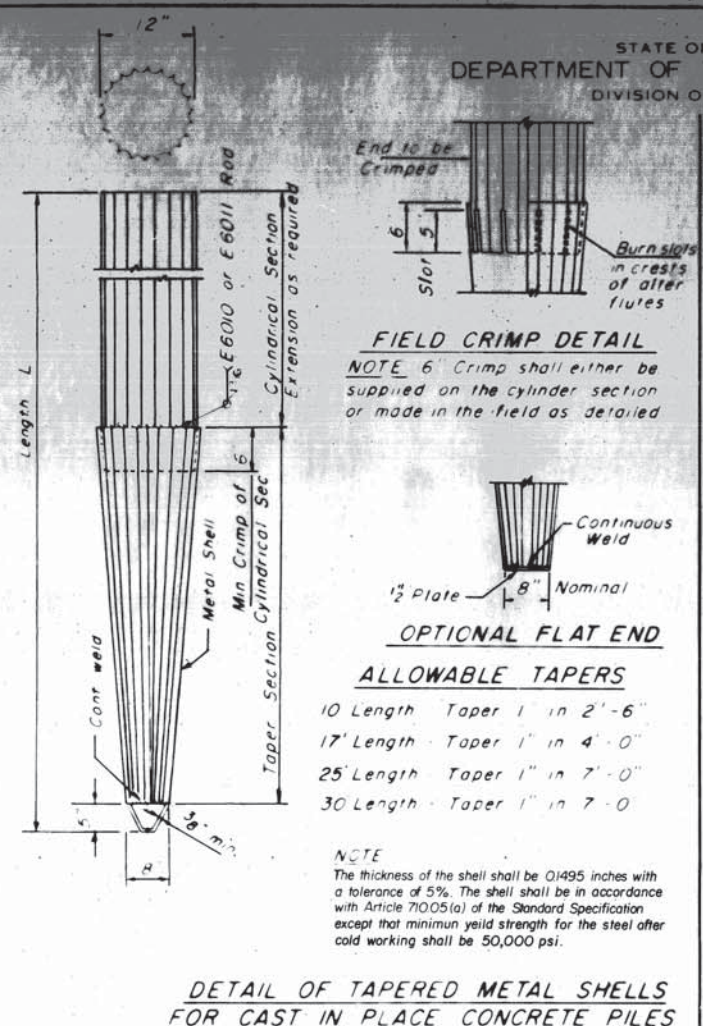
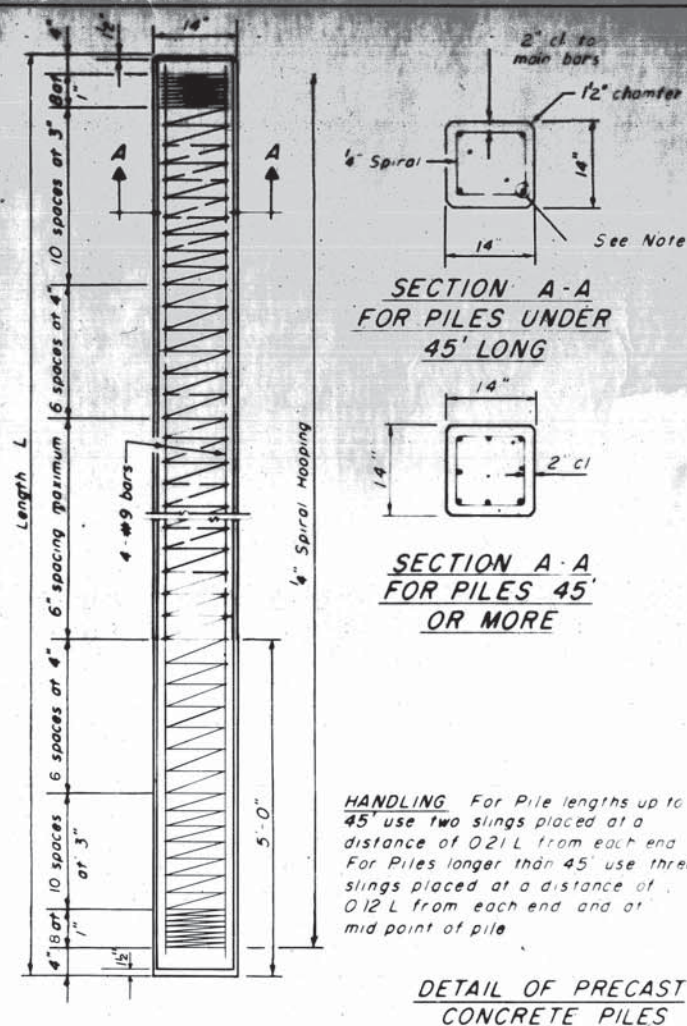
Item	Unit	Quantity
Steel Railing, Type S	Lin. Ft.	246

**TYPE S
STEEL RAILING**

SECTION 79-09110-00-BR
MAYFIELD ROAD DISTRICT
DEKALB COUNTY

DESIGNED	EXAMINED	19
CHECKED	PASSED	ENGINEER OF BRIDGE AND TRAFFIC STRUCTURES
DRAWN	APPROVED	ENGINEER OF DESIGN
CHECKED		DIRECTOR OF HIGHWAYS

STATE OF ILLINOIS
DEPARTMENT OF TRANSPORTATION
DIVISION OF HIGHWAYS



SEC. 79-09110-00-BR
MAYFIELD ROAD DISTRICT
DEKALB COUNTY