

STATE OF ILLINOIS
DEPARTMENT OF TRANSPORTATION

F.A.I. RTE.	SECTION	COUNTY	TOTAL SHEETS	SHEET NO.
90/94	2025-2134-I	COOK	10	1
		ILLINOIS	CONTRACT NO. 80C97	

FOR INDEX OF SHEETS, SEE SHEET NO. 02
FOR LIST OF APPLICABLE HIGHWAY STANDARDS
SEE SHEET NO. 02

PROJECT LOCATED IN CITY OF CHICAGO

TRAFFIC DATA
N OGDEN AVE
2023 ADT: 17,000
POSTED SPEED LIMIT: 30 MPH
FUNCTIONAL CLASSIFICATION: MAJOR COLLECTOR

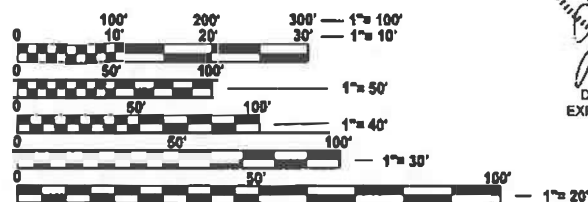
I-90/94
2025 ADT: 216,000
POSTED SPEED LIMIT: 55 MPH
FUNCTIONAL CLASSIFICATION: INTERSTATE

**PROPOSED
HIGHWAY PLANS**

**FAI ROUTE 94 (I-90/94: KENNEDY EXPRESSWAY)
SN 016-2047 & SN 016-2049
SECTION: 2025-2134-I
BRIDGE REHABILITATION ADVANCED SHORING
COOK COUNTY
C-91-222-26**

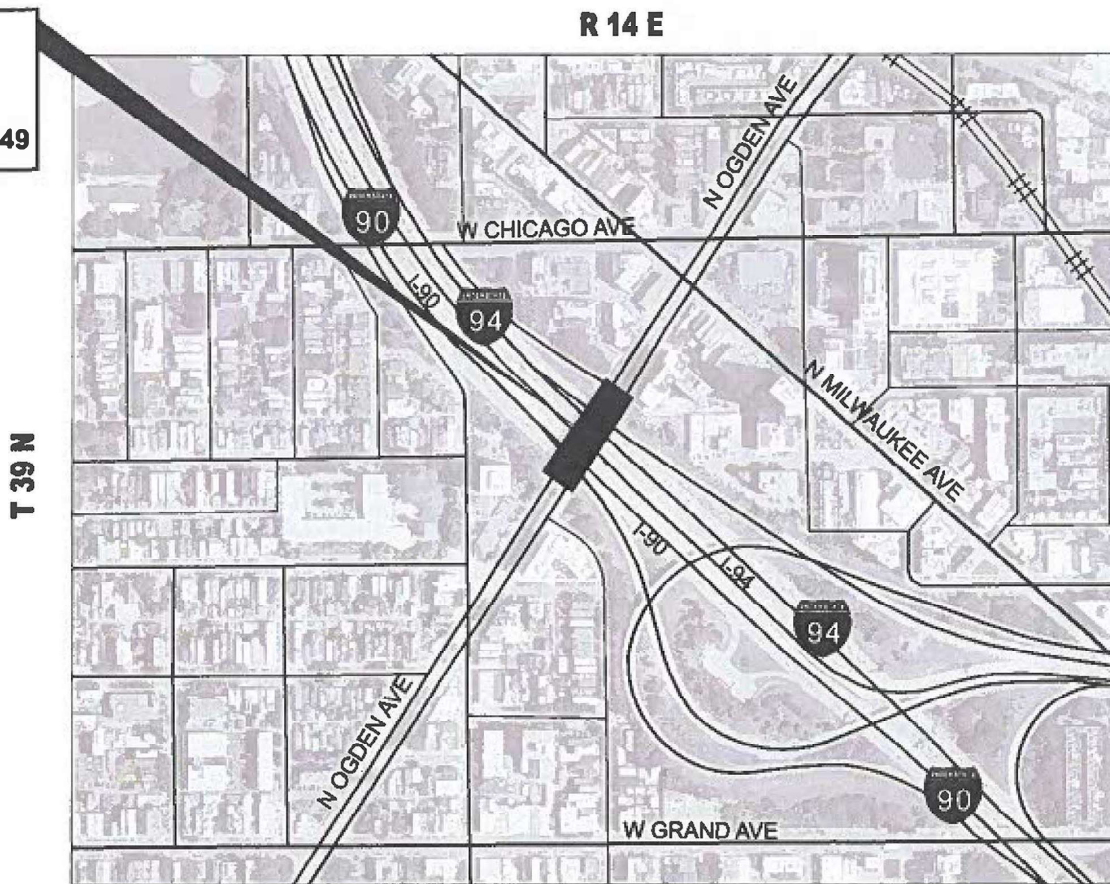


PROJECT LOCATION
N OGDEN AVE
OVER I-90/94
SN: 016-2047 & 016-2049



FULL SIZE PLANS HAVE BEEN PREPARED USING STANDARD ENGINEERING SCALES. REDUCED SIZED PLANS WILL NOT CONFORM TO STANDARD SCALES. IN MAKING MEASUREMENTS ON REDUCED PLANS, THE ABOVE SCALES MAY BE USED.

J.U.L.I.E.
JOINT UTILITY LOCATION INFORMATION FOR EXCAVATION
1-800-892-0123
OR 811



WEST CHICAGO TOWNSHIP
LOCATION MAP
N.T.S.

GROSS LENGTH = 110 FT. = 0.02 MILE
NET LENGTH = 110 FT. = 0.02 MILE

AEG ATLAS ENGINEERING
GROUP, LTD.

STATE OF ILLINOIS
DEPARTMENT OF TRANSPORTATION

SUBMITTED March 25 to 26
Janice Pang IR
REGIONAL ENGINEER

May 8 2026
Sec. E.A. Etkin
ENGINEER OF DESIGN AND ENVIRONMENT

May 8 2026
Harry
DIRECTOR OF HIGHWAYS PROJECT IMPLEMENTATION

PROJECT ENGINEER: OMAR ABOALNADIE, PE, (847)705-4726
PROJECT MANAGER: BOB STRICKER, PE, (847)705-4523

CONTRACT NO. 80C97

PRINTED BY THE AUTHORITY
OF THE STATE OF ILLINOIS

INDEX OF SHEETS (NEEDS TO BE UPDATED)

SHEET NO. TITLE

1	COVER SHEET
2	INDEX OF SHEETS, IDOT HIGHWAY STANDARDS, & GENERAL NOTES
3	SUMMARY OF QUANTITIES
4-8	STRUCTURAL PLANS S.N. 016-2047 & 016-2049
9	ENTRANCE AND EXIT RAMP CLOSURE DETAILS (TC-8)
10	TRAFFIC CONTROL FOR FREEWAY SHOULDER CLOSURES AND AND PARTIAL RAMP CLOSURES (TC-17)

HIGHWAY STANDARDS

000001-09	STANDARD SYMBOLS, ABBREVIATIONS AND PATTERNS
001006	DECIMAL OF AN INCH AND OF A FOOT
701400-12	APPROACH TO LANE CLOSURE, FREEWAY/EXPRESSWAY
701401-13	LANE CLOSURE, FREEWAY/EXPRESSWAY
701411-09	LANE CLOSURE, FREEWAY/EXPRESSWAY, WITH CROSSOVER AND BARRIER
701428-01	TRAFFIC CONTROL SETUP AND REMOVAL FREEWAY/EXPRESSWAY
701446-11	TWO LANE CLOSURE, FREEWAY/EXPRESSWAY
701901-11	TRAFFIC CONTROL DEVICES
720001-01	SIGN PANEL MOUNTING DETAILS
720006-04	SIGN PANEL ERECTION DETAILS
728001-01	TELESCOPING STEEL SIGN SUPPORT
731001-01	BASE FOR TELESCOPING STEEL SIGN SUPPORT

DISTRICT 1 STANDARDS DRAWINGS

TC-8	ENTRANCE AND EXIT RAMP CLOSURE DETAILS
TC-17	TRAFFIC CONTROL FOR FREEWAY SHOULDER CLOSURES AND AND PARTIAL RAMP CLOSURES

GENERAL NOTES

- EXACT LOCATION OF ALL UTILITIES SHALL BE FIELD VERIFIED BY THE CONTRACTOR BEFORE ORDERING ANY MATERIALS AND STARTING ANY WORK. FOR LOCATIONS OF UTILITIES, LOCALLY OWNED EQUIPMENT, LEASED ENFORCEMENT CAMERA SYSTEM FACILITY AND IDOT UNDERGROUND FACILITIES, CONTACT THE LOCAL COUNTIES, MUNICIPALITIES AND IDOT FOR LOCATIONS.
- TEST HOLES SHALL BE DUG NEAR SHORING TOWER LOCATIONS AT THE ENGINEER'S DISCRETION TO CHECK FOR UTILITIES. THE CONTRACTOR SHALL BE RESPONSIBLE FOR THE UTILITIES CONCERNED.
- MEADE ELECTRIC COMPANY, THE IDOT DISTRICT ONE ELECTRICAL MAINTENANCE CONTRACTOR, LOCATES IDOT ELECTRICAL EQUIPMENT AND UNDERGROUND CABLES, CALL 773-287-7672 FOR THE INITIAL LOCATIONS. REQUEST FOR LOCATIONS OF PREVIOUSLY MARKED FACILITIES MAY BE AT THE CONTRACTOR'S EXPENSE.
- IN ADDITIONAL TO FIELD REVIEW AND AERIAL DATA, PLAN DIMENSIONS AND DETAILS RELATIVE TO THE EXISTING FACILITIES HAVE BEEN TAKEN FROM EXISTING PLANS AND AERIALS AND ARE SUBJECT TO CONSTRUCTION VARIATIONS. PLAN DIMENSIONS AND DETAILS RELATIVE TO EXISTING PLANS ARE SUBJECT TO ROUTINE VARIATIONS. IT SHALL BE THE CONTRACTOR'S RESPONSIBILITY TO VERIFY EXISTING DIMENSIONS AND DETAILS AFFECTING NEW CONSTRUCTION AND MAKE NECESSARY APPROVED ADJUSTMENTS PRIOR TO CONSTRUCTION OR ORDERING MATERIALS. SUCH VARIATIONS SHALL NOT BE CAUSE FOR ADDITIONAL COMPENSATION FOR A CHANGE IN THE SCOPE OF WORK. HOWEVER, THE CONTRACTOR WILL BE PAID FOR THE QUANTITY ACTUALLY FURNISHED AT THE BID PRICE FOR THE WORK.
- THE CONTRACTOR WILL NOT BE ALLOWED TO SET UP A YARD OR FIELD OFFICE ON STATE PROPERTY WITHOUT WRITTEN PERMISSION FROM THE DEPARTMENT.
- THE CONTRACTOR SHALL CONTACT THE IDOT EXPRESSWAY TRAFFIC CONTROL SUPERVISOR DISTRICT ONE CARLOS AT CARLOS.MUNOZ@ILLINOIS.GOV A MINIMUM OF 72 HOURS IN ADVANCE OF BEGINNING OF WORK.
- THE CONTRACTOR SHALL USE CARE IN REMOVING OR EXCAVATING NEAR ALL EXISTING ITEMS WHICH WILL REMAIN. ANY DAMAGE DONE TO EXISTING ITEMS BY THE CONTRACTOR SHALL BE REPAIRED AT THE CONTRACTOR'S EXPENSE.
- SAW CUTTING PRIOR TO ANY REMOVAL ITEMS NOTED ON THE PLANS OR DIRECTED BY THE ENGINEER SHALL BE CONSIDERED INCLUDED IN THE COST OF THE ITEMS BEING REMOVED.
- IT SHALL BE THE CONTRACTOR'S RESPONSIBILITY TO VERIFY ALL DIMENSIONS AND CONDITIONS EXISTING IN THE FIELD PRIOR TO BEGINNING CONSTRUCTION AND ORDERING MATERIALS.
- DO NOT SCALE PLANS FOR CONSTRUCTION DIMENSIONS.
- THE CONTRACTOR SHALL CONTACT KALPANA KANNAN-HOSADURGA, THE DISTRICT ONE TRAFFIC CONTROL SUPERVISOR AT KALPANA.KANNAN-HOSADURGA@ILLINOIS.GOV A MINIMUM OF 72 HOURS IN ADVANCE OF BEGINNING WORK.

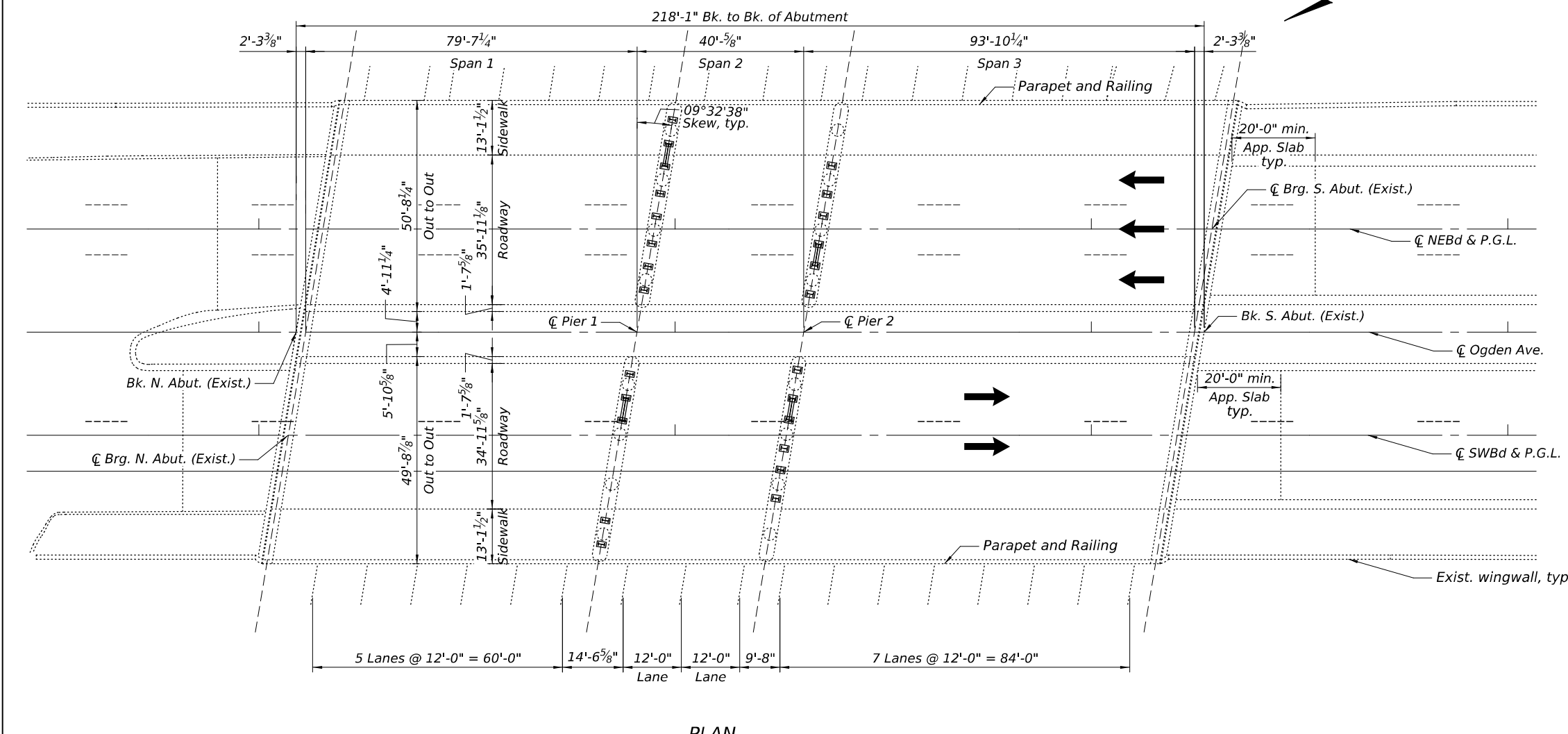
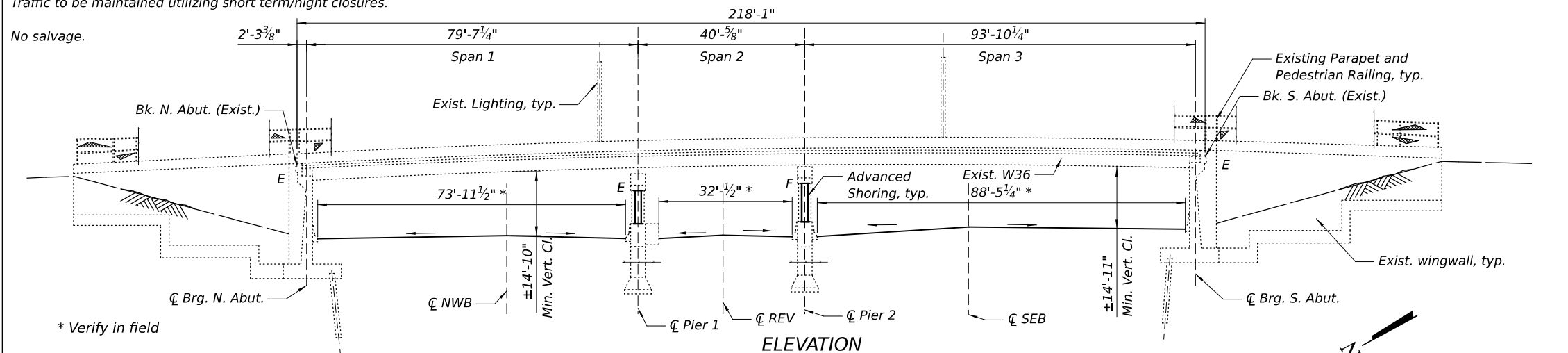
MODEL: General Notes and Index of Sheets [Sheet]
FILE NAME: c:\users\public\mbpw\3\0\158160\152137-GenNotes.dgn

	USER NAME = nappelt	DESIGNED - AGS	REVISED -	STATE OF ILLINOIS DEPARTMENT OF TRANSPORTATION	OGDEN AVENUE OVER I-90/ 94 INDEX OF SHEETS, IDOT HWY STD, & GENERAL NOTES	F.A.I. RTE.	SECTION	COUNTY	TOTAL SHEETS	SHEET NO.	
	PLOT SCALE =	CHECKED - JP	REVISED -			90/94	2025-2134-I	COOK	10	2	
PLOT DATE = 3/26/2026	DATE - 3/26/2026	REVISED -	SCALE: N.T.S.		SHEET 1 OF 1 SHEETS	STA. TO STA.	ILLINOIS FED. AID PROJECT CONTRACT NO. 80C97				

Benchmark: Square cut on N.W. corner of traffic signal box FND R35. East of North end of retaining wall at Ogden entrance ramp, Elev. 580.85.

Existing Structure: Structure No. 016-2047 SW & 016-2049 NE were originally constructed in 1959 under project I-02-2-(60) and rehabilitated in 1999 under project ACIM-0005(143). The existing superstructure consists of a dual three span continuous composite wide flange beams, with reinforced concrete deck. The bridge is 218'-1" from back to back of abutment and has spans measuring 79'-7 $\frac{1}{4}$ ", 40'-5 $\frac{5}{8}$ ", 93'-10 $\frac{1}{4}$ ". The overall bridge widths are 49'-8 $\frac{7}{8}$ " and 50'-8 $\frac{1}{4}$ " out to out for SW & NE structures, respectively. The substructure consists of cantilever abutments and wingwalls supported on timber piles with multi-column piers supported on drilled shafts. The bridge has a 9°32'38" skew.

Traffic to be maintained utilizing short term/night closures.



DESIGN SPECIFICATIONS (EXIST.)

1992 AASHTO, with 1993, 1994 & 1995 Interim Specification

DESIGN SPECIFICATIONS (NEW CONST.)

2002 AASHTO Standard Specification for Highway Bridges, 17th Edition

DESIGN STRESSES

FIELD UNITS (EXIST.)

f'_c = 3,500 psi
 f_y = 40,000 psi (Reinforcement)
 f_y = 33,000 psi (Exist. Steel Structure)

FIELD UNITS (NEW CONST.)

f_y = 36,000 psi (M270 Grade 36)

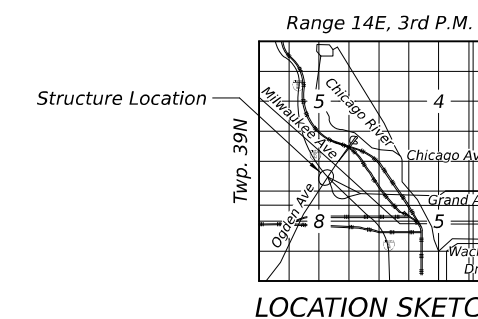
LOADING HS20

Allow 25 lb/sq.ft. for future wearing surface.



Eamon Homedi

EAMON HOMEDI, P.E., S.E.
 DATE: 02/04/2026
 NO. 081-009103
 EXP. DATE 11/30/2026



**GENERAL PLAN AND ELEVATION
 IL NORTHWEST ROUTE (OGDEN AVENUE) OVER I-90/94
 F.A.I. 90/94 SECTION 2025-2134-I**

**COOK COUNTY
 STA. 7+11.78
 STRUCTURE NO. 016-2047 & NO. 016-2049**

MODEL: GPE-1 [Sheet]
 FILE NAME: p:\atlases-pw\benlley.com\atlases-pw\11\Documents\Projects\1001\1001-ST 01262X10 I-90 at Ogden Ave\10 CADData\CADSheets\Atlas\Shoring\0162047_0162049_D162X10_001_GPE

AEG ATLAS ENGINEERING GROUP, LTD.

USER NAME =	DESIGNED - HA	REVISED -
CHECKED - EH	REVISIONS -	
PLOT SCALE =	DRAWN - SM	REVISED -
PLOT DATE =	CHECKED - EH	REVISED -

**STATE OF ILLINOIS
 DEPARTMENT OF TRANSPORTATION**

**GENERAL PLAN AND ELEVATION
 STRUCTURE NO. 016-2047 & NO. 016-2049**

SHEET S-1 OF S-5 SHEETS

F.A. RTE.	SECTION	COUNTY	TOTAL SHEETS	SHEET NO.
90/94	2025-2134-I	COOK	10	4
CONTRACT NO. 80C97				
ILLINOIS FED. AID PROJECT				

INDEX OF SHEETS

- S-1 General Plan and Elevation
- S-2 General Data
- S-3 Pier 1 Plan and Elevation
- S-4 Pier 2 Plan and Elevation
- S-5 Details Sheet

GENERAL NOTES

Plan dimensions and details relative to the existing structure have been taken from existing plans are subject to nominal construction variations. The Contractor shall field verify existing dimensions and details affecting new construction and make necessary approved adjustments prior to construction or ordering of materials. Such variations shall not be cause for additional compensation for a change in scope of the work, however, the Contractor will be paid for the quantity actually furnished at the unit price bid for the work.

Contractor shall not scale dimensions from the contract plans for construction purposes. Scales shown are for information only.

All structural steel shall be AASHTO M270 Grade 36, unless otherwise noted.

Calculated weight of structural steel = 25,550 (Grade 36).

No field welding is permitted except as specified in contract documents.

All structural steel shall be shop painted with the inorganic zinc rich primer per AASHTO M300, Type I. Cost included with Furnishing & Erecting Steel.

Contractor to avoid and protect REVLOC system during all operations and to coordinate with IDOT on schedule and opening/closing of gates.


TOTAL BILL OF MATERIAL

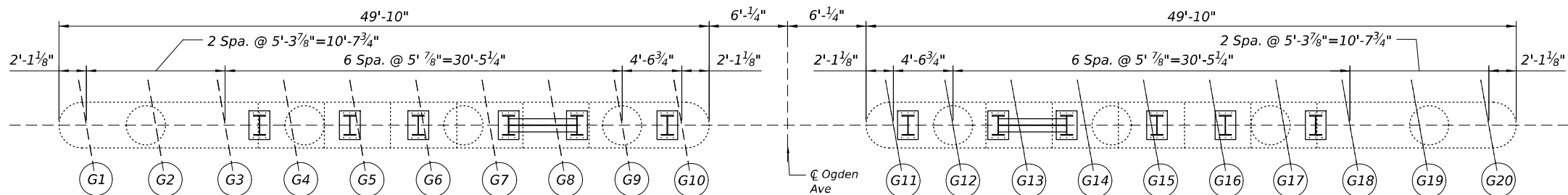
ITEM	UNIT	SUPER	SUB	TOTAL
Furnishing and Erecting Structural Steel	Pound	-	25,550	25,550
Anchor Bolts, 1 1/4"	Each	-	300	300

SCOPE OF WORK

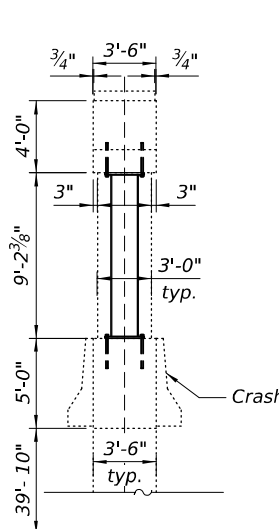
1. At Piers 1 and 2, install temporary shoring consisting of vertical steel W-columns on steel base plates with grouted anchor rods, at locations shown on the plans and bearing on the concrete pile cap to support the underside of the pier cap.
2. Plumb and fully anchor shoring columns prior to installing cross frames. Install double-angle cross frames with welded end gusset plates and bolted intermediate gusset plates.
3. Existing speed limit and Ogden sign need to be relocated and mounted on median. Location to be determined by RE.

MODEL: General Data [Sheet]
 FILE NAME: p:\atlases-pw\beniley.com\atlases-pw-01\Documents\Projects\1001\1001 ST 01262X10 I-80 at Ogden Ave\10 CADData\CADSheets\Atlas\Shoring\0162047_0162049_D180CS7_002_GeneralNotes.dgn
 3/24/2026 4:52:24 PM

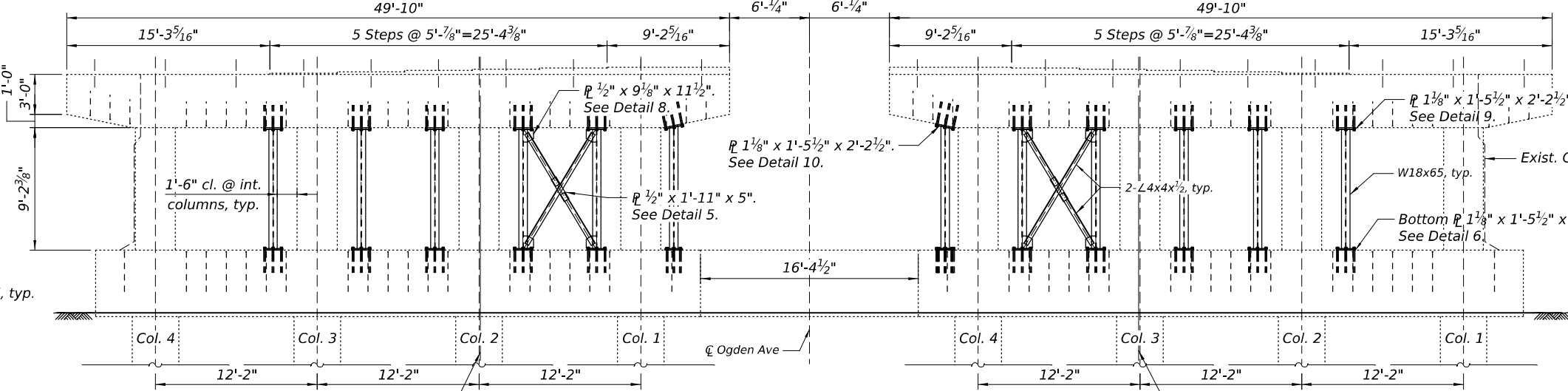
	USER NAME =	DESIGNED - HA	REVISED -	STATE OF ILLINOIS DEPARTMENT OF TRANSPORTATION	GENERAL DATA STRUCTURE NO. 016-2047 & NO. 016-2049	F.A. RTE.	SECTION	COUNTY	TOTAL SHEETS	SHEET NO.	
	PLOT SCALE =	DRAWN - SM	REVISED -			90/94	2025-2134-I	COOK	10	5	
PLOT DATE =	CHECKED - EH	REVISED -	SHEET S-2 OF S-5 SHEETS			CONTRACT NO. 80C97					
					ILLINOIS			FED. AID PROJECT			



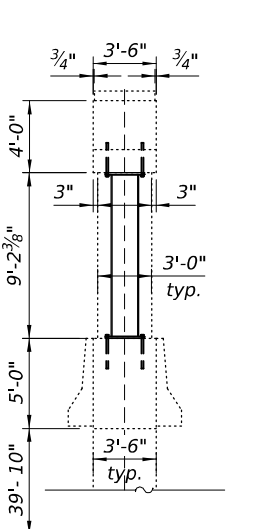
PLAN



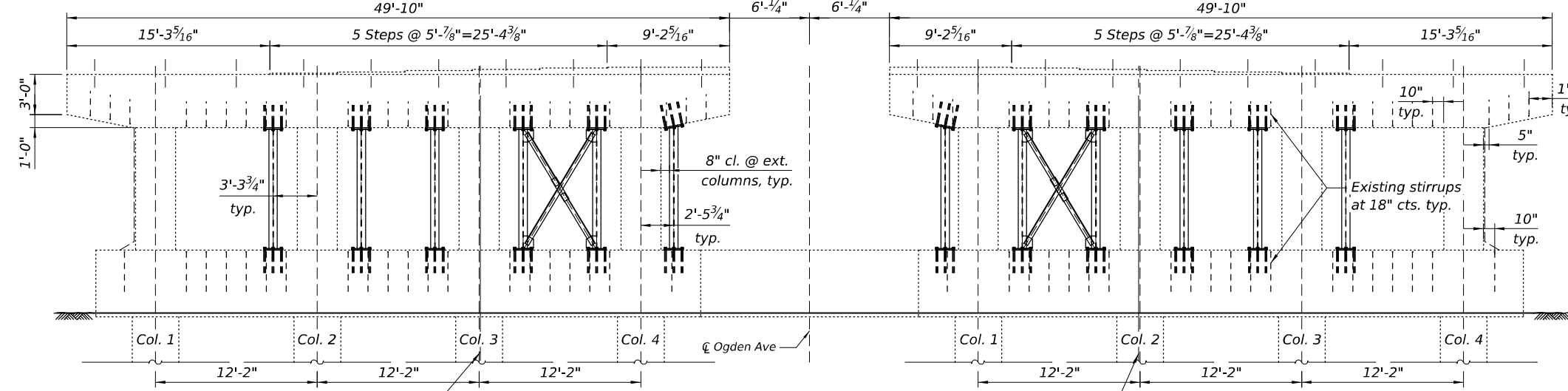
WEST END SECTION



PIER TWO - NORTH FACE
(Looking South)



EAST END SECTION



PIER TWO - SOUTH FACE
(Looking North)

LEGEND

GXX Girder Line

Notes:
For Details, see Sheet 5 of 5.
Shoring axial capacity = 285 k per column

MODEL: Pier 2 [Sheet] FILE NAME: p:\atlases-pw-bentley.com\atlases-pw-c11\Documents\Projects\1001\1001-ST 01262X10 I-30 at Ogden Ave\10 CADData\CADSheets\Atlas\Shoring\0162047_0162049_D162X10_004_Pier 2.dgn

AEG ATLAS ENGINEERING GROUP, LTD.

USER NAME =	DESIGNED - HA	REVISED -
PLOT SCALE =	CHECKED - EH	REVISED -
PLOT DATE =	DRAWN - SM	REVISED -
	CHECKED - EH	REVISED -

STATE OF ILLINOIS
DEPARTMENT OF TRANSPORTATION

PIER 2 PLAN AND ELEVATION
STRUCTURE NO. 016-2047 & NO. 016-2049

SHEET S-4 OF S-5 SHEETS

F.A. RTE.	SECTION	COUNTY	TOTAL SHEETS	SHEET NO.
90/94	2025-2134-I	COOK	10	7
CONTRACT NO. 80C97				

ILLINOIS FED. AID PROJECT

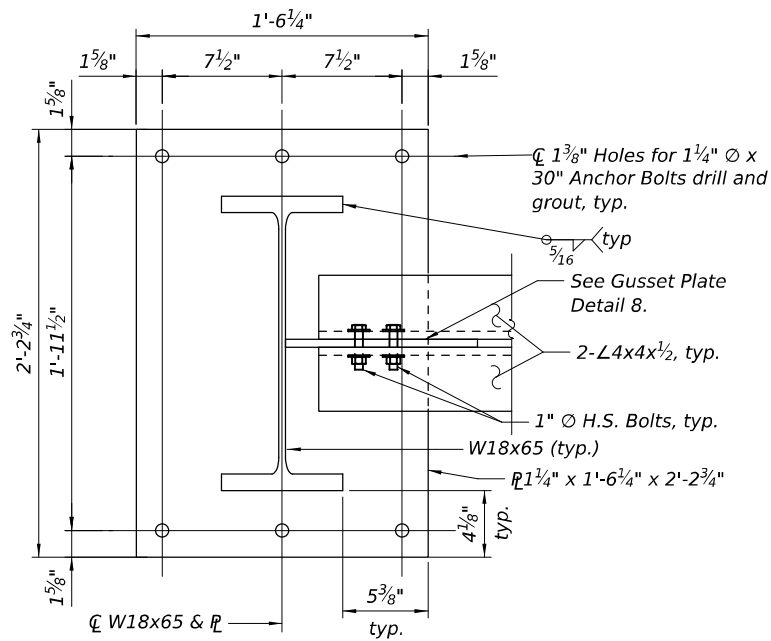


PLATE-DETAIL 1A

\bar{P} 1 1/4" x 1'-6 1/4" x 2'-2 3/4" (16-Required)
(Bottom plate shown, Top similar)

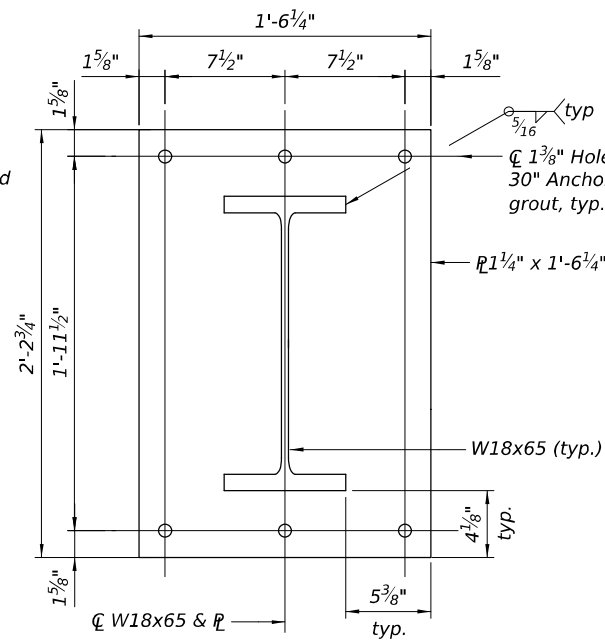
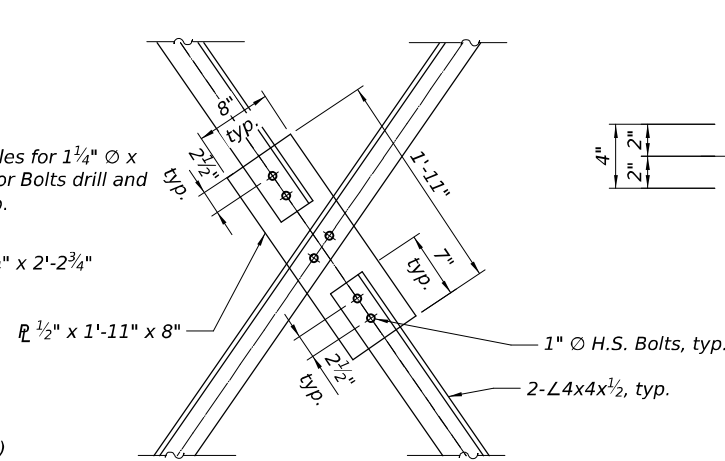
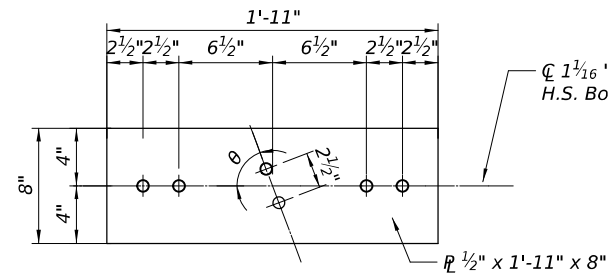


PLATE-DETAIL 1B

\bar{P} 1 1/4" x 1'-6 1/4" x 2'-2 3/4" (34-Required)
(Bottom plate shown, Top similar)

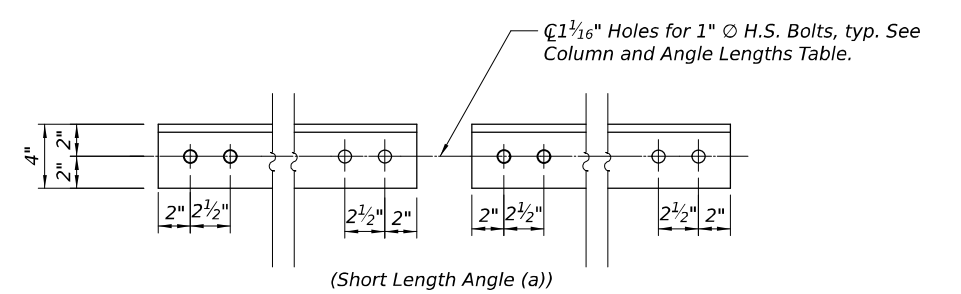


CROSS BRACE PLATE-DETAIL 2

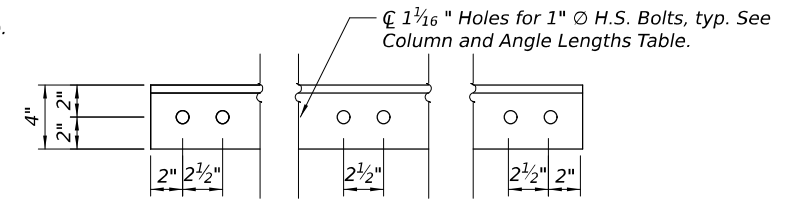


CROSS BRACE PLATE-DETAIL 5

\bar{P} 1/2" x 1'-11" x 8" (4-Required)

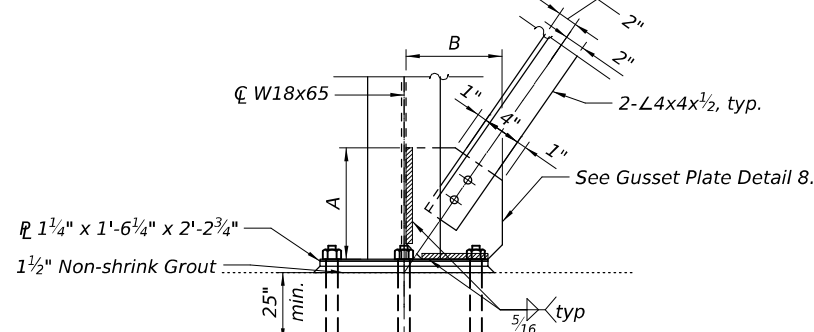


(Short Length Angle (a))



(Long Length Angle (b))

DOUBLE ANGLE-DETAIL 3



CROSS FRAME CONNECTION-DETAIL 4

(Bottom Shown, Top Similar)

COLUMN AND ANGLE LENGTHS

LOCATION	MEMBER	LENGTH	NO REQ.
Pier 1	W18x65 - Interior	7'-7 3/4"	9
Pier 1	W18x65 - Exterior	**7'-9 1/2"	4
Pier 2	W18x65 - Interior	8'-10 1/8"	10
Pier 2	W18x65 - Exterior	**8'-11 7/8"	2
Pier 1	L4x4x1/2 (a)	3'-9 1/2"	8
Pier 2	L4x4x1/2 (a)	4'-3 13/16"	8
Pier 1	L4x4x1/2 (b)	8'-4"	4
Pier 2	L4x4x1/2 (b)	9'-4 5/8"	4

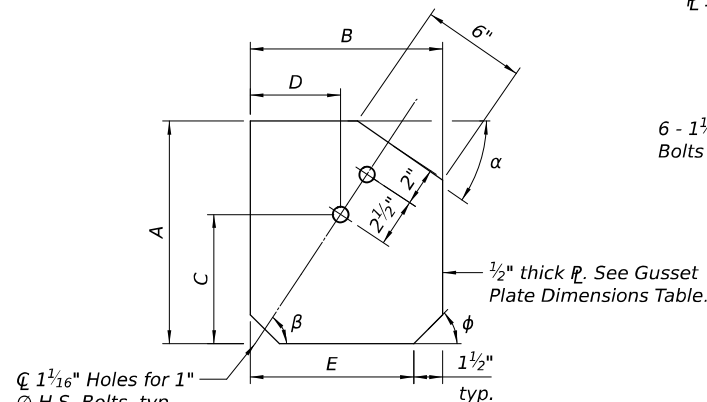
(a) short length angles
(b) full length angles

GUSSET PLATE DIMENSIONS

LOCATION	β	ϕ	α	θ	A	B	C	D	E	NO. REQ.
Pier 1 - Top and Bottom Plate	55°19'32"	45°00'00"	34°40'29"	69°20'56"	11 1/8"	10"	6 3/16"	5"	8 1/2"	8
Pier 2 - Top and Bottom Plate	58°57'56"	45°00'00"	34°40'29"	62°04'08"	11 1/2"	9 1/8"	6 5/16"	4 1/4"	7 5/8"	8

Notes:

Reinforcement in crashwall and pier cap not shown for clarity. Contractor shall take precaution to not damage any existing reinforcement. Drilled and set anchor bolts shall be installed according to Article 521.06 of Standard Specifications. Contractor to locate and miss existing reinforcement in pier when installing anchor bolts.

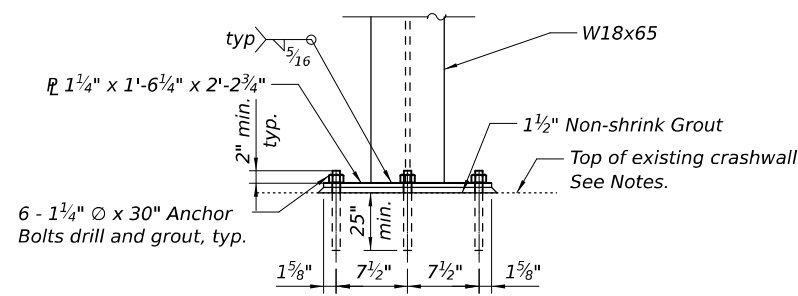


GUSSET PLATE-DETAIL 8

(16-Required)

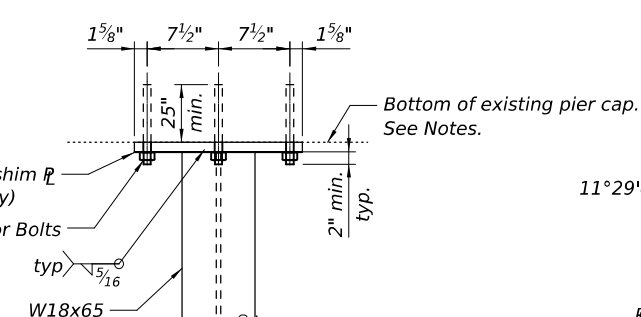
\bar{P} 1 1/4" x 1'-6 1/4" x 2'-2 3/4" with 1/4" shim \bar{P} and adjusting shim \bar{P} (if necessary)
6 - 1 1/4" ϕ x 30" Anchor Bolts drill and grout, typ.

**Length measured along \bar{C} of column



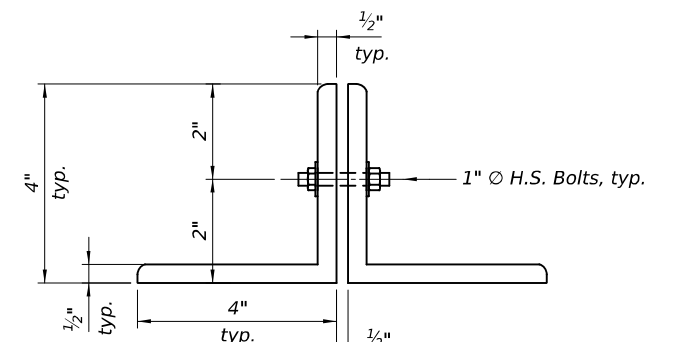
BASE PLATE-DETAIL 6

(Typical for all Base \bar{P})

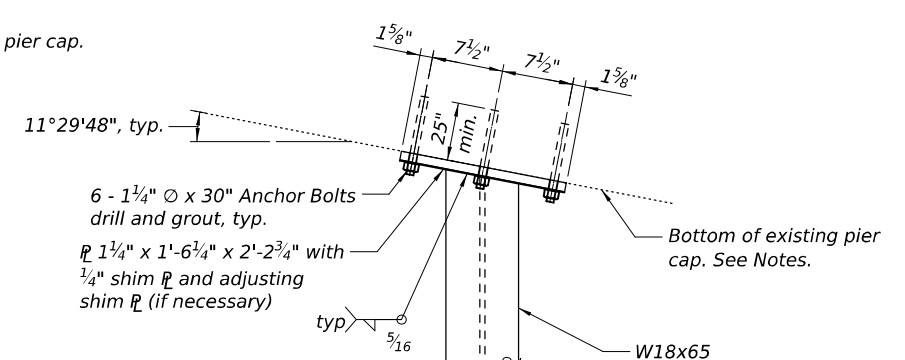


TOP PLATE-DETAIL 9

(Typical for all interior column top \bar{P})



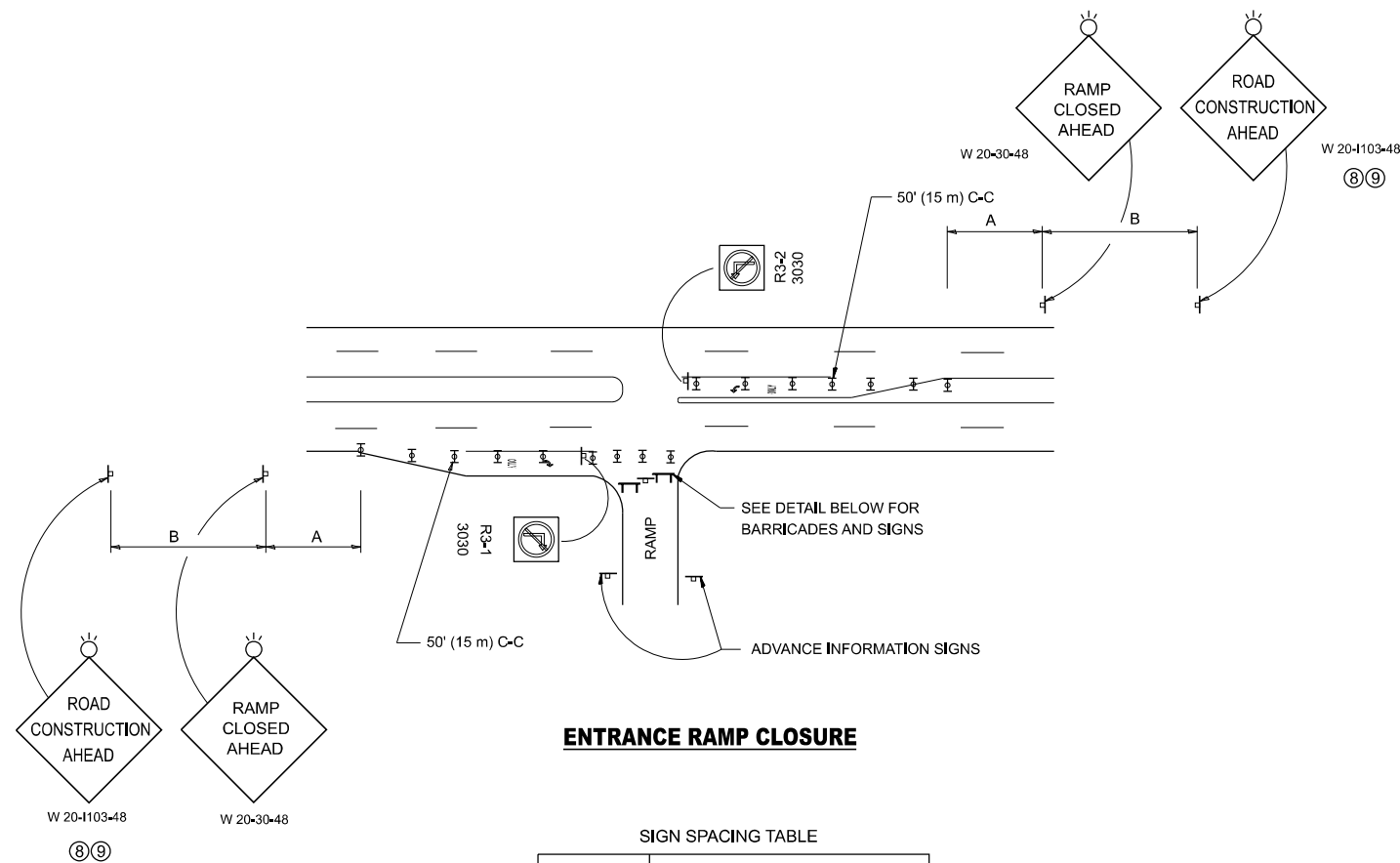
DOUBLE ANGLE-DETAIL 7



TOP PLATE-DETAIL 10

(Typical for all exterior column Top \bar{P})

MODEL: Pier 1 Repairs - (Sheet)
FILE NAME: p:\atlantis-pw-bentley.com\atlantis-pw-c11\Documents\Projects\1001\1001-ST 01262X10 I-80 at Ogden Ave\10 CADData\CADSheets\Atlas\Shorting\0162047_0162049_D162X10_005_DetailSheet.dgn

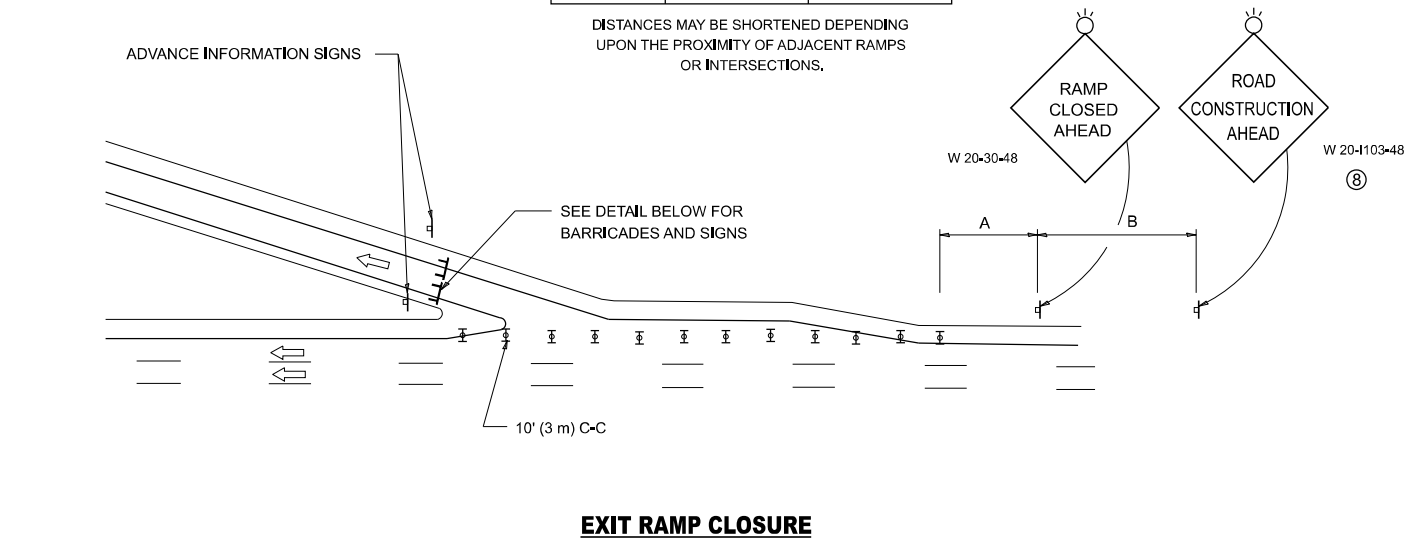


ENTRANCE RAMP CLOSURE

SIGN SPACING TABLE

FACILITY	DISTANCE BETWEEN SIGNS	
	A	B
EXPRESSWAY >24 HOURS	1000' (300 m)	1500' (450 m)
EXPRESSWAY ≤24 HOURS	500' (150 m)	500' (150 m)
ARTERIAL 55 MPH	500' (150 m)	500' (150 m)
ARTERIAL 50-45 MPH	350' (100 m)	350' (100 m)
ARTERIAL <45 MPH	200' (60 m)	200' (60 m)

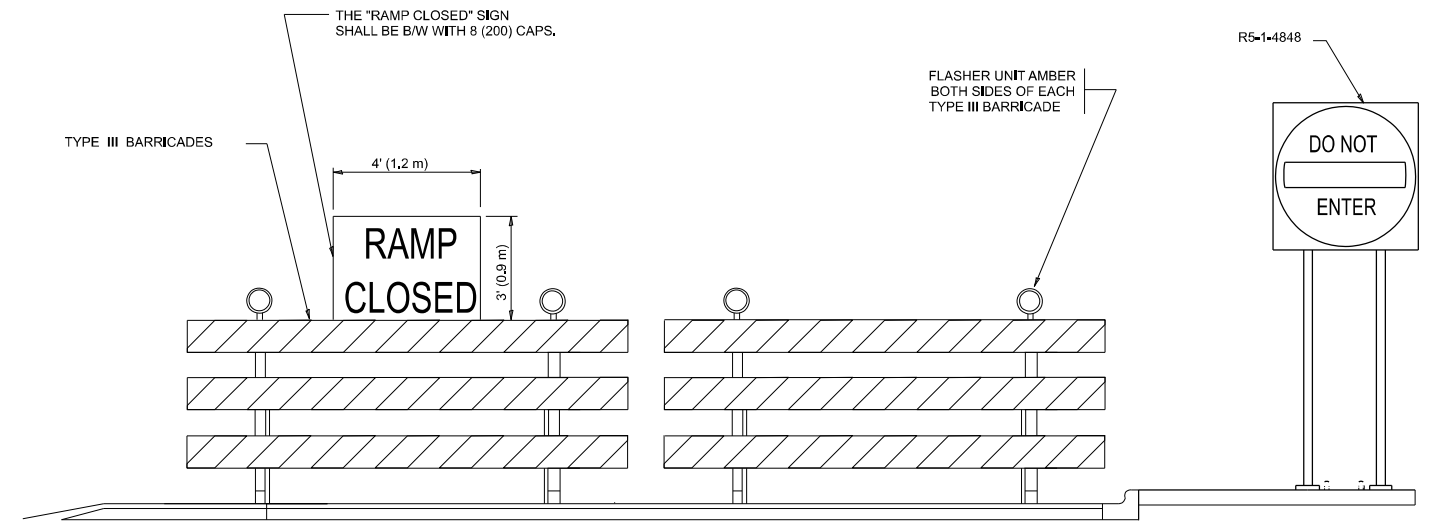
DISTANCES MAY BE SHORTENED DEPENDING UPON THE PROXIMITY OF ADJACENT RAMPS OR INTERSECTIONS.



EXIT RAMP CLOSURE

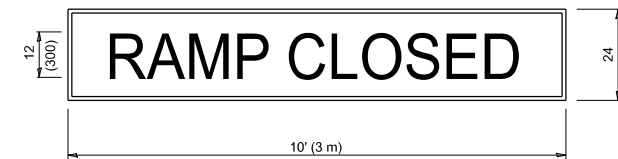
SYMBOLS

- ▬ TYPE II BARRICADE OR DRUM
- ▬ TYPE III BARRICADE WITH 2 FLASHING LIGHTS



DETAIL FOR REQUIRED BARRICADES & SIGNS

RAMP CLOSURE ADVANCE WARNING SIGN



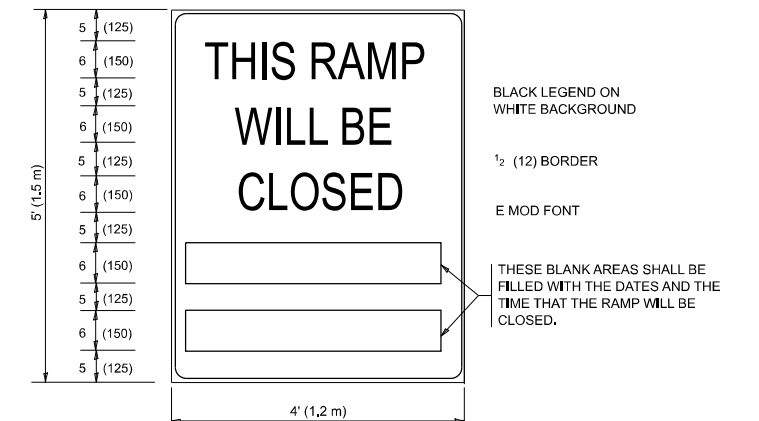
BLACK LEGEND ON ORANGE BACKGROUND MOUNTED DIAGONALLY
E MOD FONT
1 (25) BORDER

THESE SIGNS ARE REQUIRED ON ALL THE EXIT GUIDE SIGNS FOR EXIT RAMPS THAT WILL BE CLOSED FOR MORE THAN FOUR (4) CONSECUTIVE DAYS.

THESE SIGNS ARE REQUIRED ON BOTH SIDES OF THE RAMP, MINIMUM OF 1 WEEK IN ADVANCE OF THE CLOSURE.

THESE SIGNS SHALL BE FABRICATED AND PAID FOR ACCORDING TO THE TEMPORARY INFORMATION SIGNING SPECIAL PROVISION

RAMP CLOSURE ADVANCE INFORMATION SIGN



BLACK LEGEND ON WHITE BACKGROUND

1/2 (12) BORDER

E MOD FONT

THESE BLANK AREAS SHALL BE FILLED WITH THE DATES AND THE TIME THAT THE RAMP WILL BE CLOSED.

GENERAL NOTES:

- 1 CONES MAY BE SUBSTITUTED FOR DRUMS OR TYPE II BARRICADES DURING DAY OPERATIONS. CONES SHALL BE A MINIMUM OF 28 (700) HIGH.
- 2 VERTICAL BARRICADES SHALL NOT BE USED FOR RAMP CLOSURES.
- 3 A FLAGGER SHALL BE POSITIONED AT EACH CLOSED RAMP THAT IS OPEN TO CONSTRUCTION VEHICLES, PRECEDED BY A W20-7 FLAGGER WARNING SIGN.
- 4 ALL ROUTE MARKERS AND TRAILBLAZER ASSEMBLIES WHICH DIRECT MOTORISTS TO A CLOSED ENTRANCE RAMP SHALL BE COVERED WHEN THE RAMP IS CLOSED FOR MORE THAN FOUR (4) DAYS.
- 5 THE SIGNING AND BARRICADING WHICH IS REQUIRED BY THIS DETAIL SHALL BE INCLUDED IN THE COST OF TRAFFIC CONTROL AND PROTECTION (EXPRESSWAYS).
- 6 AUTHORIZATION FROM THE DISTRICT'S BUREAU OF TRAFFIC IS REQUIRED FOR ALL RAMP CLOSURES.
- 7 THE RAMP CLOSURE ADVANCE INFORMATION SIGNS SHALL BE ERECTED IF THE CLOSURE TIME EXCEEDS TWENTY-FOUR (24) HOURS. ADDITIONAL ADVANCE WARNING SIGNS ON EXIT GUIDE SIGNING WILL BE REQUIRED FOR EXIT RAMP CLOSURES THAT EXCEED FOUR (4) DAYS IN LENGTH.
- 8 ROAD CONSTRUCTION AHEAD SIGNS MAY BE OMITTED WHEN THIS DETAIL IS USED IN CONJUNCTION WITH OTHER TRAFFIC CONTROL THAT ALREADY INCLUDES A ROAD CONSTRUCTION AHEAD SIGN.
- 9 ARTERIAL ROAD CONSTRUCTION AHEAD SIGNS SHALL BE INSTALLED ON THE LEFT SIDE OF TRAFFIC IF THE MEDIAN IS MORE THAN 10 FT WIDE.

ALL DIMENSIONS ARE IN INCHES (MILLIMETERS) UNLESS OTHERWISE SHOWN.

STATE OF ILLINOIS
DEPARTMENT OF TRANSPORTATION

ENTRANCE AND EXIT RAMP
CLOSURE DETAILS

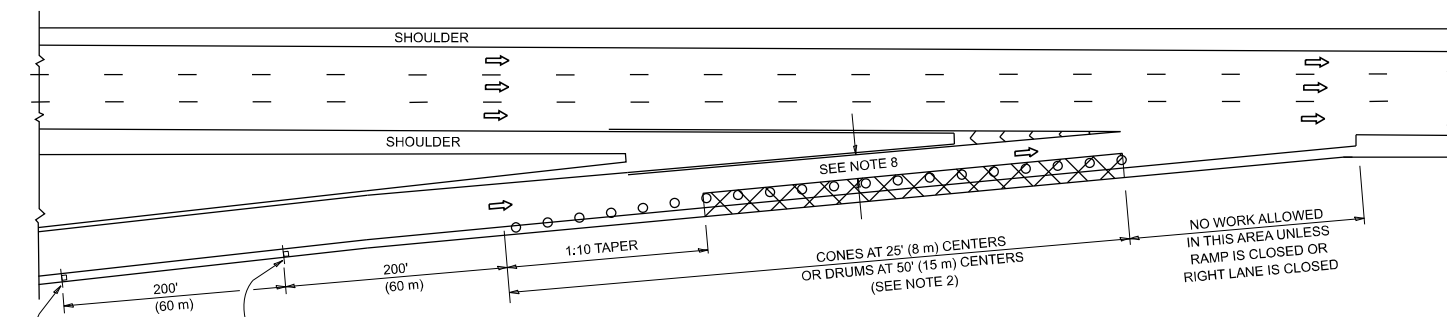
USER NAME	# lawrence,demanche	DESIGNED	- D,W,S,	REVISED	- S,P,B_12-09
DRAWN	-	CHECKED	-	REVISED	- M,D_06-13
PLOT SCALE	# 0,08333317' / in.	DATE	- 02-83	REVISED	- M,D_01-18
PLOT DATE	# 10/2/2025	DATE	- 02-83	REVISED	- D,S_05-25

SCALE: NONE SHEET 1 OF 1 SHEETS STA. TO STA.

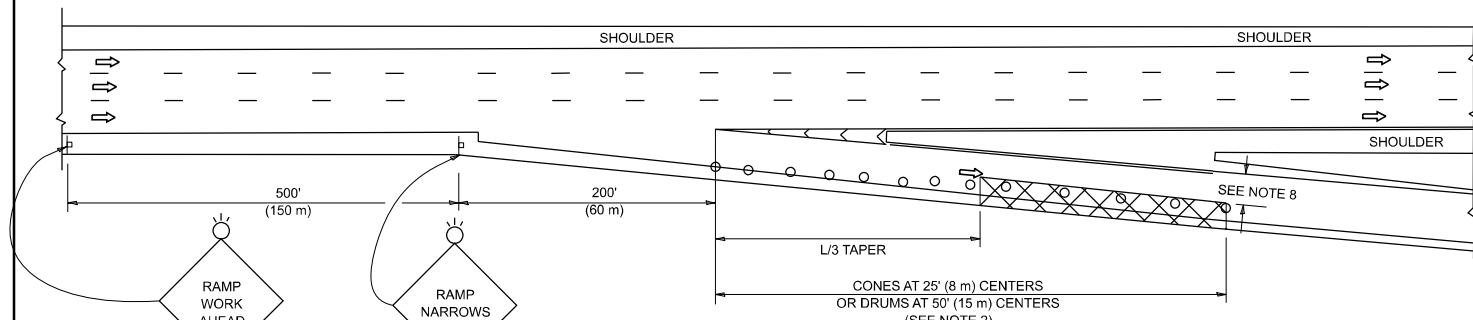
F.A.I. RTE.	SECTION	COUNTY	TOTAL SHEETS	SHEET NO.
90/94	2025-2134-1	COOK	10	9
TC-08			CONTRACT NO. 80C97	
ILLINOIS FED. AID PROJECT				

MODEL: TC-08 (Sheet)
FILE NAME: c:\pw\work\project\lawrence,demanche\illinois\08951415\TC-08.dgn

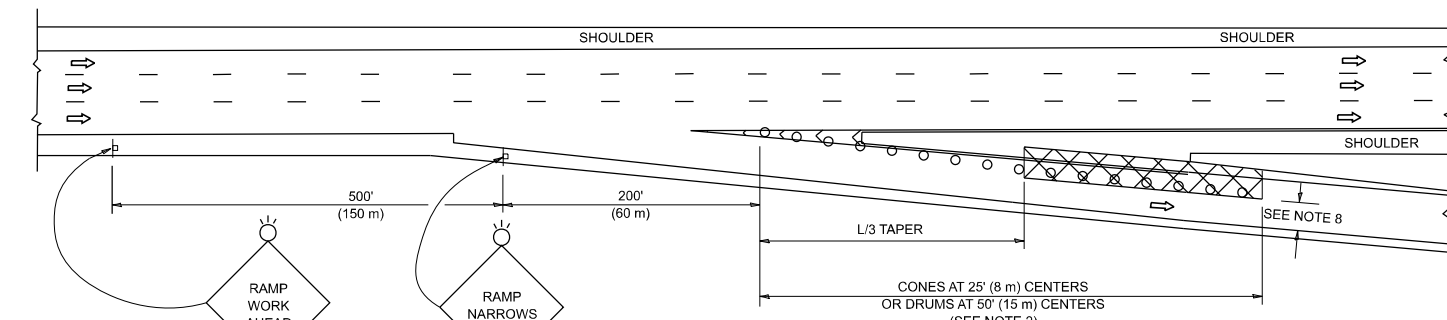
PARTIAL RAMP CLOSURE DETAILS



TYPICAL ENTRANCE RAMP



TYPICAL EXIT RAMP



TYPICAL EXIT RAMP

SYMBOLS

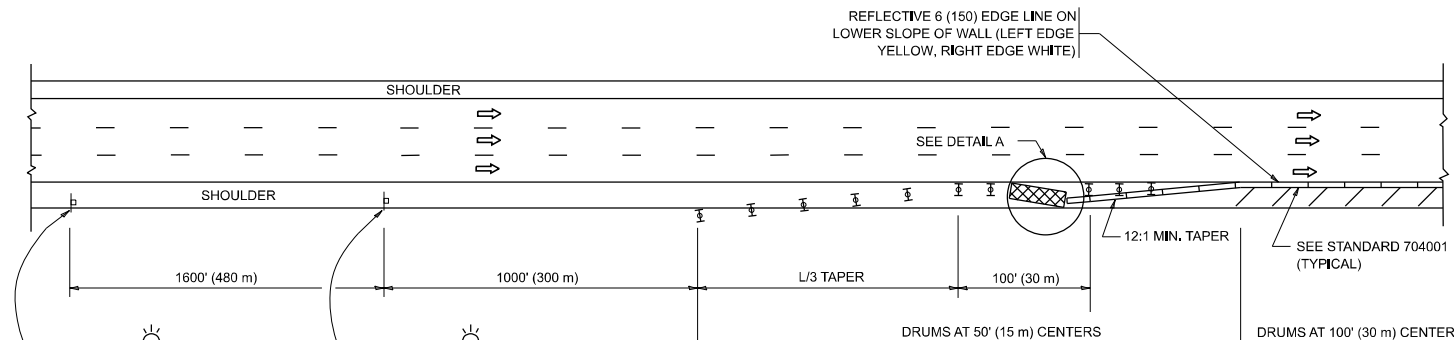
- ACTIVE WORK AREA
- SIGN ON PORTABLE OR PERMANENT SUPPORT
- FLAGGER WITH CONTROL SIGN
- TYPE II BARRICADE OR DRUM
- CONE, DRUM OR BARRICADE
- IMPACT ATTENUATOR OF TYPE AND TEST LEVEL SPECIFIED

GENERAL NOTES:

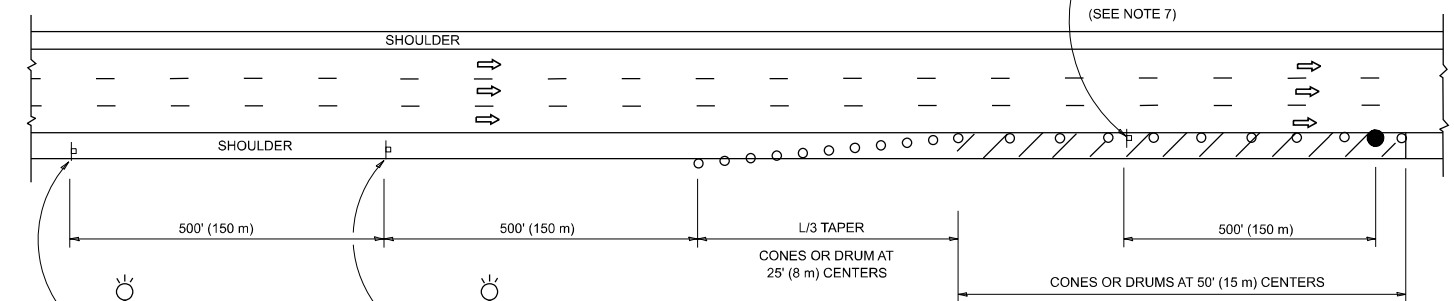
- THE "L" DISTANCE EQUALS:

SPEED LIMIT	FORMULAS
45 mph (80 km/h)	METRIC ENGLISH
OR GREATER:	$L=0.85(W)(S)$ $L=(W)(S)$
W = WIDTH OF OFFSET IN FEET (METERS)	
S = NORMAL POSTED SPEED MPH (KM/H)	
- TYPE II BARRICADES OR DRUMS ARE REQUIRED FOR ALL NIGHTTIME CLOSURES. TYPE II BARRICADES OR DRUMS WITH MONODIRECTIONAL STEADY BURN LIGHTS ARE REQUIRED FOR DELINEATING OBSTACLES, EXCAVATIONS, OR HAZARDS EXCEEDING 100 FT (30m) IN LENGTH AT NIGHT.
- ALL SIGNS SHALL BE POST MOUNTED IF THE CLOSURE TIME EXCEEDS FOUR DAYS.
- FLASHING LIGHTS SHALL BE USED DURING THE HOURS OF DARKNESS AND SHALL BE INSTALLED ABOVE THE FIRST TWO SETS OF SIGNS.

SHOULDER CLOSURE DETAILS

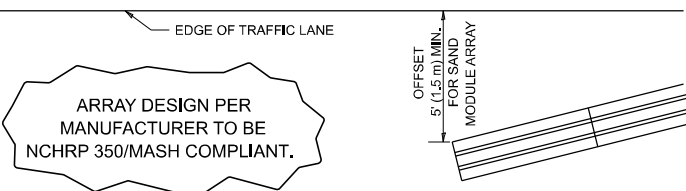


PERMANENT SHOULDER CLOSURE



TEMPORARY SHOULDER CLOSURE

THIS DETAIL IS USED WHERE:
 1. VEHICLES, EQUIPMENT, WORKERS OR THEIR ACTIVITIES ENCR OACH IN AN AREA CLOSER THAN 15' (4.5 m) TO THE EDGE OF PAVEMENT FOR A PERIOD IN EXCESS OF 15 MINUTES.



**DETAIL "A"
IMPACT ATTENUATOR, TEMPORARY
(SEE NOTE 5)**

- THE IMPACT ATTENUATOR, TEMPORARY IS NOT REQUIRED WHEN THE TEMPORARY CONCRETE BARRIER WALL IS PROTECTED BY OR IS TIED INTO THE EXISTING GUARDRAIL. IF OFFSET IS LESS THAN 5 FEET USE NARROW USE TYPE DEVICE TO MEET NCHRP350/MASH.
- AUTHORIZATION FROM THE DISTRICT'S BUREAU OF TRAFFIC IS REQUIRED FOR ALL FREEWAY CLOSURES.
- THE FLAGGER AND FLAGGER SIGN ARE REQUIRED AT THE ABOVE WORK SITES WHEN:
 a. FOUR OR MORE WORK VEHICLES ENTER THE TRAFFIC LANES IN A ONE HOUR PERIOD.
 b. THE WORK ACTIVITY REQUIRES FREQUENT ENCR OACHMENT INTO THE LANE OPEN TO TRAFFIC.
 THE FLAGGER SHALL BE STATIONED APPROXIMATELY 100' (30 m) TO 200' (60 m) IN ADVANCE OF THE WORKERS.

- 12' MIN. WIDTH TANGENT SECTION
16' MIN. WIDTH CURVE SECTION.
- TEMPORARY SHOULDER AND NON-SYSTEM INTERCHANGE PARTIAL RAMP CLOSURES ARE ALLOWED WEEKDAYS BETWEEN 9:00 A.M. AND 3:00 P.M. AND BETWEEN 7:00 P.M. AND 5:00 A.M. OR AS APPROVED BY THE EXPRESSWAY TRAFFIC OPERATIONS ENGINEER. PERMANENT SHOULDER AND PARTIAL RAMP CLOSURES WILL ONLY BE PERMITTED IF CALLED FOR IN THE PLANS OR AS APPROVED BY THE EXPRESSWAY OPERATIONS ENGINEER.

ALL DIMENSIONS ARE IN INCHES (MILLIMETERS) UNLESS OTHERWISE SHOWN.

MODEL: TC-17 (Sheet)
 FILE NAME: c:\pwworking\illinois.demanche\0951415\TC-17.dgn

USER NAME	# lawrence,demanche	DESIGNED	-	REVISED	-
DRAWN	-	D,W,S,		REVISED	-
PLOT SCALE	# 0,08333317 / in.	CHECKED	-	REVISED	-
PLOT DATE	# 10/2/2025	DATE	-	REVISED	-

**STATE OF ILLINOIS
DEPARTMENT OF TRANSPORTATION**

**TRAFFIC CONTROL DETAILS FOR FREEWAY
SHOULDER CLOSURES AND PARTIAL RAMP CLOSURES**

SCALE: NONE SHEET 1 OF 1 SHEETS STA. TO STA.

F.A.I RTE.	SECTION	COUNTY	TOTAL SHEETS	SHEET NO.
90/94	2025-2134-1	COOK	10	10
TC-17		CONTRACT NO. 80C97		
ILLINOIS FED. AID PROJECT				