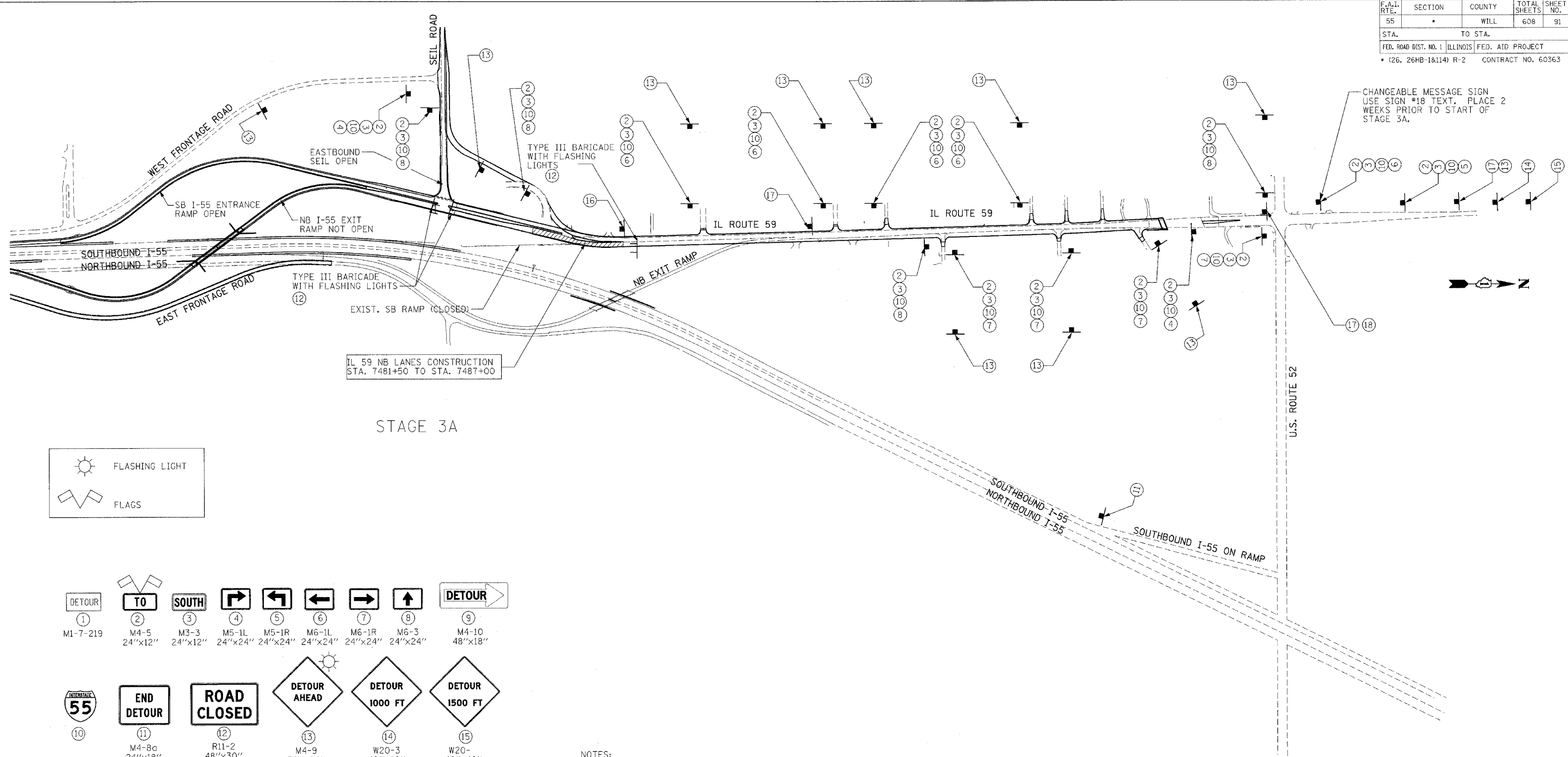


F.A.I. RTE.	SECTION	COUNTY	TOTAL SHEETS	SHEET NO.
55	*	WILL	608	91
STA.		TO STA.		
FED. ROAD DIST. NO. 1 ILLINOIS FED. AID PROJECT				
* (26, 26HB-1&114) R-2 CONTRACT NO. 60363				



STAGE 3A

FLASHING LIGHT
 FLAGS

DETOUR (1) M1-7-219
TO (2) M4-5 24"x12"
SOUTH (3) M3-3 24"x12"
RIGHT TURN (4) M5-1L 24"x24"
LEFT TURN (5) M5-1R 24"x24"
NO TURN (6) M6-1L 24"x24"
RIGHT TURN (7) M6-1R 24"x24"
NO TURN (8) M6-3 24"x24"
DETOUR (9) M4-10 48"x18"
INTERSTATE 55 (10)
END DETOUR (11) M4-8a 24"x18"
ROAD CLOSED (12) R11-2 48"x30"
DETOUR AHEAD (13) M4-9 30"x24"
DETOUR 1000 FT (14) W20-3 48"x48"
DETOUR 1500 FT (15) W20- 48"x48"
ALL TRAFFIC (16) W20- 48"x48"
RAMP CLOSED AHEAD (17) W20- 48"x48"
THIS RAMP WILL BE COSED (18) (PER STANDARD TC-08)

- NOTES:**
- DISTANCE BETWEEN SIGN PLACEMENT SHALL BE PER DISTRICT ONE HIGHWAY STANDARD TC-21 "TYPICAL MARKING FOR CLOSING STATE HIGHWAYS" AND HIGHWAY STANDARD BLR 22-4 "TYPICAL APPLICATION OF TRAFFIC CONTROL DEVICES FOR CONSTRUCTION ON RURAL LOCAL HIGHWAYS", AND AT THE DISCRETION OF THE ENGINEER.
 - THE FIRST TWO WARNING SIGNS IN A SEQUENCE WILL CONTAIN FLASHING MONODIRECTIONAL LIGHTS.
 - SIGN SEQUENCES SHALL BE AS SHOWN FROM TOP TO BOTTOM.
 - TYPE III BARRICADES AND R11-2 SIGNS SHALL BE POSITIONED AS SHOWN IN "ROADWAY CLOSED TO ALL TRAFFIC" DETAIL ON HIGHWAY STANDARD 701901.
 - SEE STAGE 3A MAINTENANCE OF TRAFFIC PLAN SHEETS FOR ADDITIONAL DETAILS.

SYMBOL LEGEND

- SIGN
- TYPE III BARRICADE
- WORK AREA

MOTO4 REVISIONS	
NAME	DATE

ILLINOIS DEPARTMENT OF TRANSPORTATION
 FAI 55 AT FAP 338 ILLINOIS ROUTE 59
 SECTION: (26, 26HB-1&114) R-2
PROPOSED DETOUR ROUTE
SOUTHBOUND I -55 RAMP
DETOUR TO U.S. ROUTE 52
 SCALE: N.T.S. DRAWN BY: JB
 DATE: 03/14/08 CHECKED BY: ACL
TENG
TENG & ASSOCIATES, INC.
 ENGINEERS/ARCHITECTS/PLANNERS
 301 N. MICHIGAN AVE. CHICAGO, IL 60610
 TELEPHONE: 312.881.0000

\\STB00R\ANDON...SR000R\LDGN...SR000Z\BADDN...SR000R\PLDGN
 4-03-2008 14:46:28
 T:\DOCUMENT\153295\N\CVL\LDGN\MID\00201.DGN
 2 3 4 5 6 7 8 9 10 11 12 13 14 15 16 17 18 19 20 21 22 23 24 25 26 27 28 29 30 31 32 33 34 35 36 37 38 39 40 41 42 43 44 45 46 47 48 49 50 51 52 53 54 55 56 57 58 59 60 61 62 63
 LEEAC