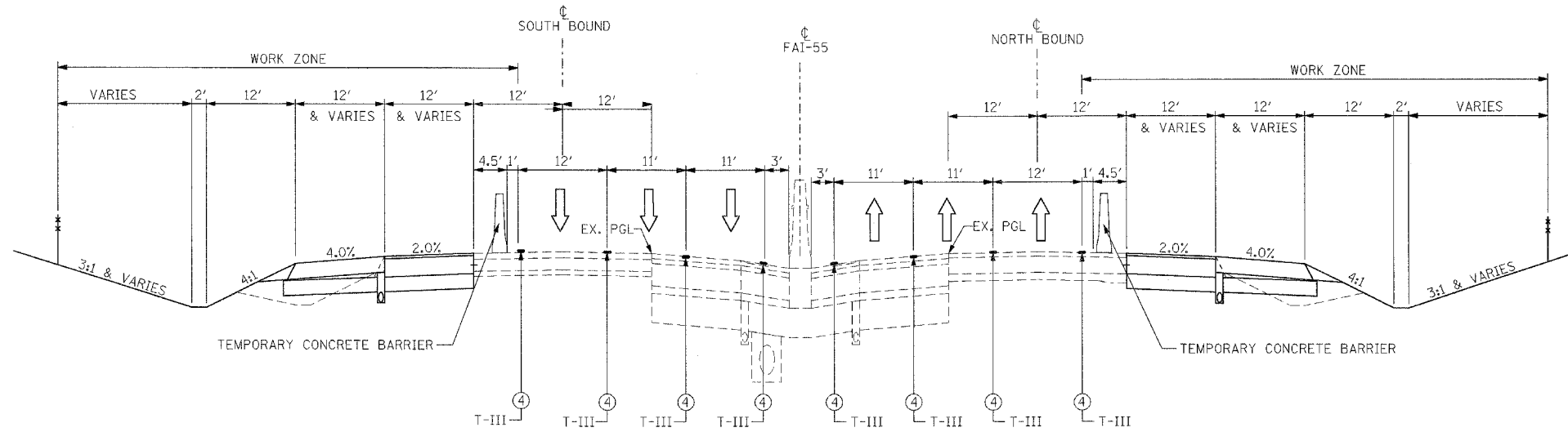
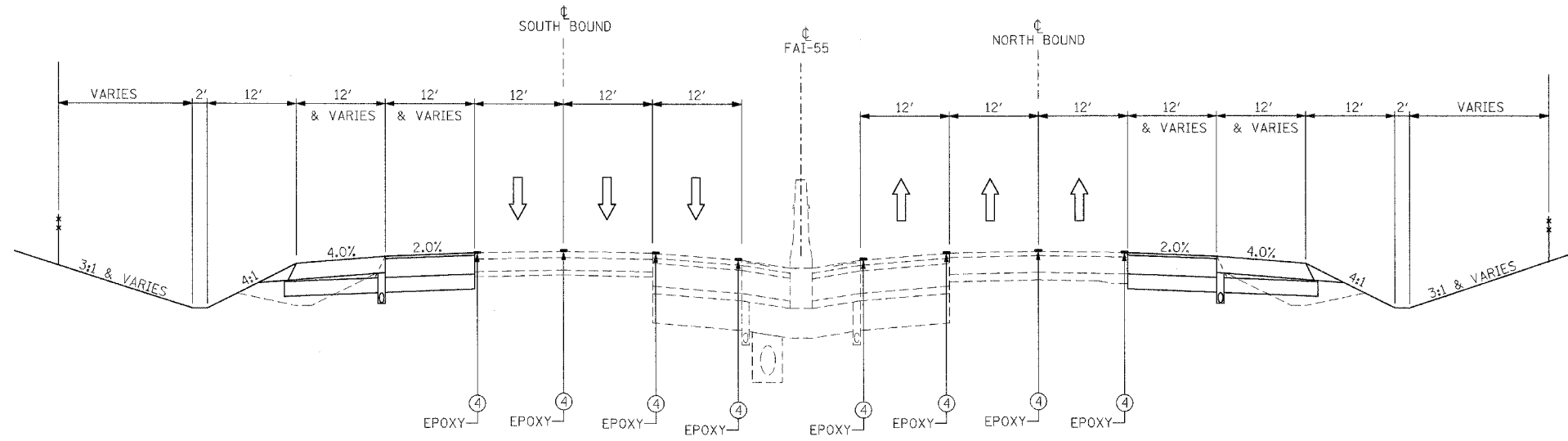


F.A.I. RTE.	SECTION	COUNTY	TOTAL SHEETS	SHEET NO.
55	*	WILL.	608	94
STA.	TO STA.		FED. AID PROJECT	
FED. ROAD DIST. NO. 1 ILLINOIS		CONTRACT NO. 60363		



**STAGE 1**  
 TYPICAL SECTION A-A  
 FAI ROUTE 55  
 81+76 TO 105+00 NORTHBOUND I-55  
 82+00 TO 111+46 SOUTHBOUND I-55



**WINTER STAGE**  
 TYPICAL SECTION A-A  
 FAI ROUTE 55  
 71+59 TO 108+00 NORTHBOUND I-55  
 74+30 TO 111+06 SOUTHBOUND I-55

NOTE:  
 WINTER STAGE PAVEMENT MARKINGS SHALL APPROXIMATELY MATCH THE PAVEMENT MARKINGS LOCATIONS PRIOR TO CONSTRUCTION ACTIVITIES.

**LEGEND:**

- |   |   |
|---|---|
| ① EXIST. WOVEN WIRE FENCE                                     | ⑮ PROP. GRANULAR EMBANKMENT               |
| ② CHAIN LINK FENCE, 4'  | ⑯ AGGREGATE SUBGRADE 12"                  |
| ③ BARRICADES, TYPE II OR DRUMS WITH STEADY BURN LIGHT         | ⑰ N/A                                     |
| ④ TEMPORARY PAVEMENT MARKINGS (OR TYPE III TAPE IF INDICATED) | ⑱ PROPOSED PAVEMENT MARKINGS              |
| ⑤ VERTICAL PANELS WITH STEADY BURN LIGHT                      | ⑲ PAVED SHOULDER REMOVAL                  |
| ⑥ TEMPORARY PAVEMENT, 10"                                     | ⑳ EXISTING PAVEMENT                       |
| ⑥A TEMPORARY PAVEMENT, 4"                                     | ㉑ TEMPORARY PAVEMENT (PREVIOUS STAGE)     |
| ⑦ N/A   | ㉒ TEMPORARY SHOULDER (PREVIOUS STAGE)     |
| ⑧ AGGREGATE SHOULDERS, TYPE B 6"                              | ㉓ AGGREGATE BASE COURSE, TYPE B, 10"      |
| ⑨ TEMPORARY SEEDING   | ㉔ TEMPORARY CONCRETE BARRIER WALL         |
| ⑩ TEMPORARY PIPE CULVERT                                      | ㉕ TOPSOIL EXCAVATION                      |
| ⑪ BITUMINOUS SURFACE REMOVAL                                  |   |
| ⑫ PROP. HOT-MIX ASPHALT SURFACE COURSE, MIX "D", N70 1 1/2"   | ➡ TRAFFIC FLOW                            |
| ⑬ PROP. STEEL PLATE BEAM GUARDRAIL                            | (E) DENOTES EXISTING ALIGNMENT STATIONING |
| ⑭ N/A   | (P) DENOTES PROPOSED ALIGNMENT STATIONING |

MOT07 REVISIONS	
NAME	DATE

ILLINOIS DEPARTMENT OF TRANSPORTATION  
 FAI 55 AT FAP 338 ILLINOIS ROUTE 59  
 SECTION: (26, 26HB-1&114) R-2  
**MAINTENANCE OF TRAFFIC**  
**TYPICAL SECTIONS**  
**STAGE 1 (1 OF 2)**

SCALE: N.T.S. DRAWN BY: JB  
 DATE: 03/14/08 CHECKED BY: ACL

**TENG**  
 TENG & ASSOCIATES, INC.  
 750 N. MICHIGAN AVENUE, SUITE 1000  
 CHICAGO, ILLINOIS 60611  
 TELEPHONE: 312.655.0000

I:\TECHNICAL\2008\03\150\1\DOCUMENT\32190\CIVIL\JOB\MOT07\000\FIN.DGN  
 3-14-2008 9:53:50  
 2,3,4,5,6,7,8,9,10,11,12,13,14,15,16,17,18,19,20,21,22,23,24,25,26,27,28,29,30,31,32,33,34,35,36,37,38,39,40,41,42,43,44,45,46,47,48,49,50,51,52,53,54,55,56,57,58,59,60,61,62,63