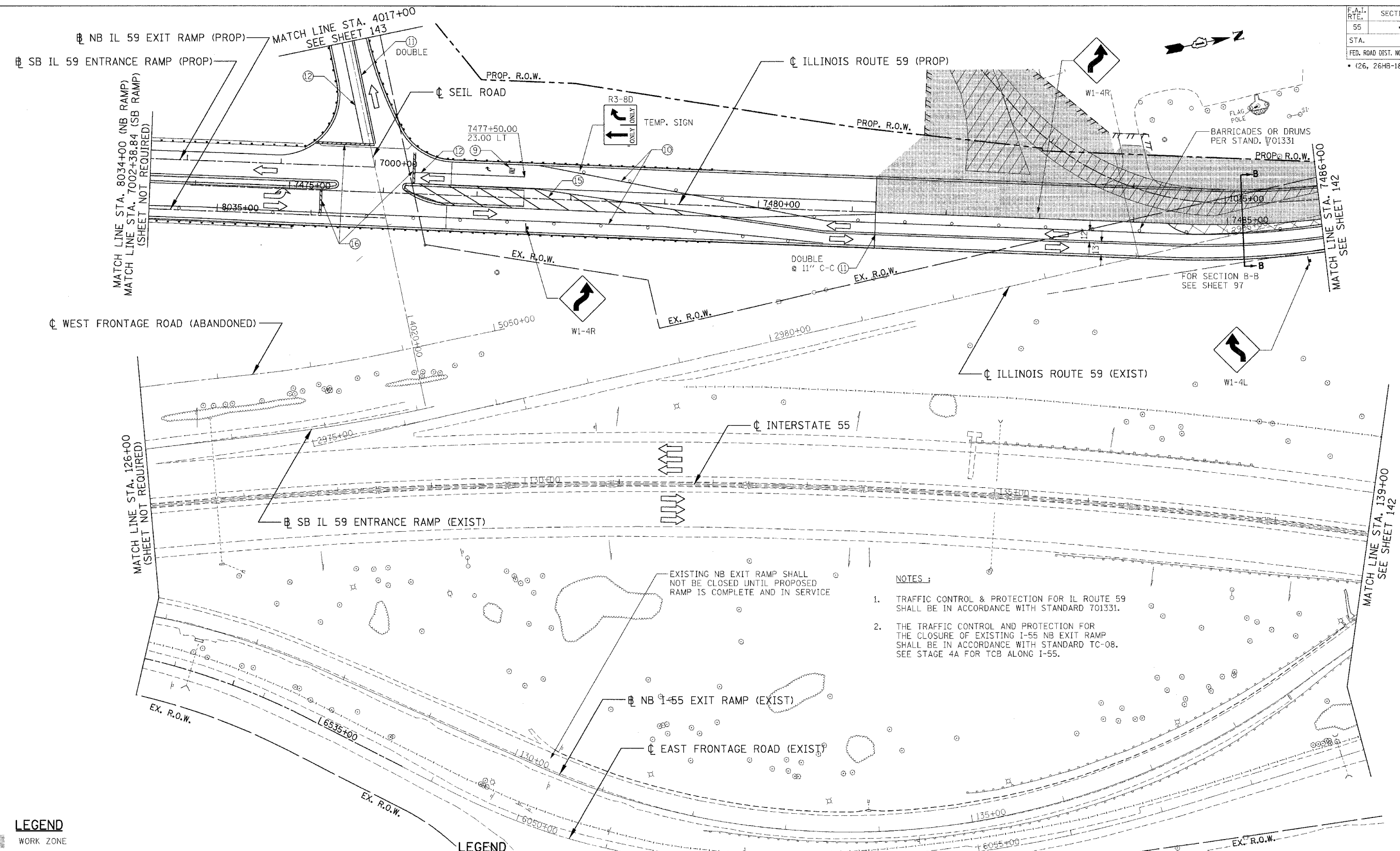


F.A.I. RTE.	SECTION	COUNTY	TOTAL SHEETS	SHEET NO.
55		WILL	608	141
STA.	TO STA.			
FED. ROAD DIST. NO. 1 ILLINOIS FED. AID PROJECT				
• (26, 26HB-1&114) R-2 CONTRACT NO. 60363				



NOTES:

1. TRAFFIC CONTROL & PROTECTION FOR IL ROUTE 59 SHALL BE IN ACCORDANCE WITH STANDARD 701331.
2. THE TRAFFIC CONTROL AND PROTECTION FOR THE CLOSURE OF EXISTING I-55 NB EXIT RAMP SHALL BE IN ACCORDANCE WITH STANDARD TC-08. SEE STAGE 4A FOR TCB ALONG I-55.

EXISTING NB EXIT RAMP SHALL NOT BE CLOSED UNTIL PROPOSED RAMP IS COMPLETE AND IN SERVICE

LEGEND

- WORK ZONE
- TEMPORARY PAVEMENT
- TEMP. PVMT - PREVIOUS STAGE
- CLASS D PATCHES (TYPE AND THICKNESS SPECIFIED AT EACH PATCH LOCATION)
- PAVEMENT REMOVAL
- PAVED SHOULDER REMOVAL (INCL. GORES)
- TRAFFIC FLOW
- ARROW BOARD
- VERTICAL PANELS
- BARRICADE, TYPE III
- PROP. TRAFFIC SIGN
- BARRICADES, TYPE II W/ FLASHING LIGHTS
- PLASTIC TYPE II BARRICADES OR DRUMS W/ STEADY BURN LIGHT
- TEMPORARY CONCRETE BARRIER

LEGEND

- ① EPOXY PAVEMENT MARKING - LINE 4" (WHITE)
- ② TEMPORARY PAVEMENT MARKING - 4" (WHITE)
- ③ TEMPORARY PAVEMENT MARKING - 4" (YELLOW)
- ④ EPOXY PAVEMENT MARKING - LINE 4" (YELLOW)
- ⑤ TEMPORARY PAVEMENT MARKING - 8" (WHITE)
- ⑥ TEMPORARY PAVEMENT MARKING - 12" (WHITE)
- ⑦ EPOXY PAVEMENT MARKING - LINE 5" (WHITE) 10' DASH-30' SKIP
- ⑧ TEMPORARY PAVEMENT MARKING - 24" (WHITE)
- ⑨ PAVEMENT MARKING TAPE, TYPE III - LETTERS AND SYMBOLS
- ⑩ PAVEMENT MARKING TAPE, TYPE III - 4" (WHITE)
- ⑪ PAVEMENT MARKING TAPE, TYPE III - 4" (YELLOW)
- ⑫ PAVEMENT MARKING TAPE, TYPE III - 6" (WHITE)
- ⑬ PAVEMENT MARKING TAPE, TYPE III - 8" (WHITE)
- ⑭ PAVEMENT MARKING TAPE, TYPE III - 12" (WHITE)
- ⑮ PAVEMENT MARKING TAPE, TYPE III - 12" (YELLOW)
- ⑯ PAVEMENT MARKING TAPE, TYPE III - 24" (WHITE)
- ⑰ PAVEMENT MARKING TAPE, TYPE III - 5" (WHITE), 10' DASH-30' SKIP

MOT54 REVISIONS	
NAME	DATE

ILLINOIS DEPARTMENT OF TRANSPORTATION
 FAI 55 AT FAP 338 ILLINOIS ROUTE 59
 SECTION: (26, 26HB-1&114) R-2
**MAINTENANCE OF TRAFFIC
 STAGE 3B
 STA. 126+00 TO STA. 139+00**
 SCALE: 1" = 50'
 DATE: 03/14/08
 DRAWN BY: JB
 CHECKED BY: ACL
TENG
TENG & ASSOCIATES, INC.
 ENGINEERS/ARCHITECTS/PLANNERS
 265 N. WISCONSIN AVE. DEERFIELD, IL 60015
 TELEPHONE: 848-0400