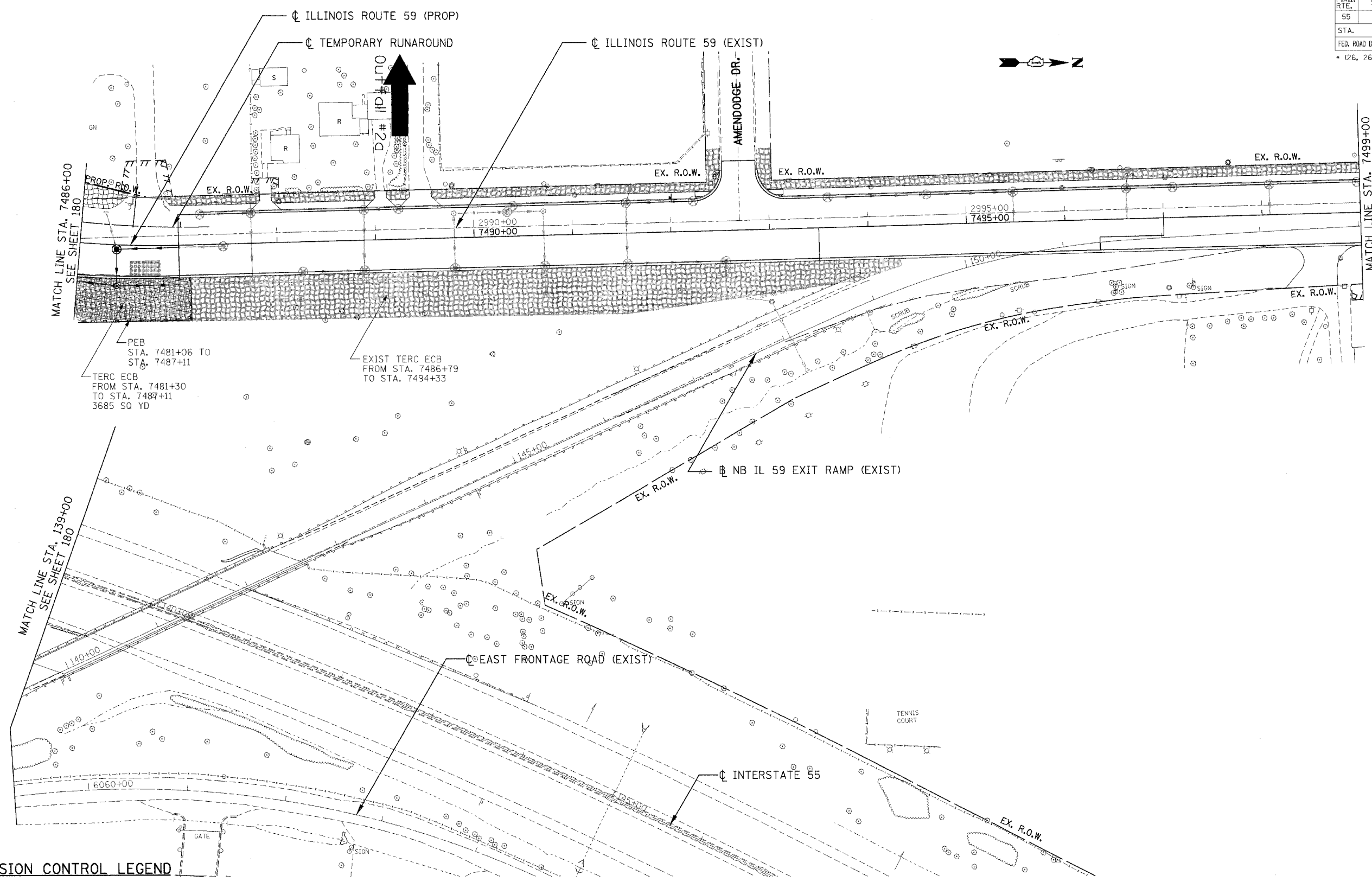


F.A.I. RTE.	SECTION	COUNTY	TOTAL SHEETS	SHEET NO.
55	•	WILL	608	181
STA. 7486+00		TO STA. 7499+00		
FED. ROAD DIST. NO. 1		ILLINOIS	FED. AID PROJECT	
• (26, 26HB-1&114) R-2 CONTRACT NO. 60363				



...V:\TD\DRG\DRAWING\...S\SURVEYING\...S\1\3\4\14\15\16\17\18\19\20\21\22\23\24\25\26\27\28\29\30\31\32\33\34\35\36\37\38\39\40\41\42\43\44\45\46\47\48\49\50\51\52\53\54\55\56\57\58\59\60\61\62\63
 ...V:\TD\DRG\DRAWING\...S\SURVEYING\...S\1\3\4\14\15\16\17\18\19\20\21\22\23\24\25\26\27\28\29\30\31\32\33\34\35\36\37\38\39\40\41\42\43\44\45\46\47\48\49\50\51\52\53\54\55\56\57\58\59\60\61\62\63
 ...V:\TD\DRG\DRAWING\...S\SURVEYING\...S\1\3\4\14\15\16\17\18\19\20\21\22\23\24\25\26\27\28\29\30\31\32\33\34\35\36\37\38\39\40\41\42\43\44\45\46\47\48\49\50\51\52\53\54\55\56\57\58\59\60\61\62\63

EROSION CONTROL LEGEND

- | | | | |
|--|---|--|--|
| | SEDIMENT BASIN | | STRUCTURE REMOVAL |
| | SEDIMENT CONTROL, DRAINAGE STRUCTURE INLET FILTER | | AGGREGATE (EROSION CONTROL) |
| | REINFORCED INLET PROTECTION | | TEMP PIPE SLOPE DRAIN |
| | PERIMETER EROSION BARRIER (PEB) | | TEMPORARY DITCH CHECK |
| | TEMPORARY EROSION CONTROL SEEDING AND EROSION CONTROL BLANKET (TERC ECB) SEEDING, CLASS 7 OVER WINTER STAGE | | TEMPORARY PIPE REMOVAL |
| | MULCH METHOD 2 AND TEMPORARY EROSION CONTROL SEEDING (MM2 & TERC) | | TEMPORARY PAVEMENT, UNLESS OTHERWISE NOTED |
| | EXISTING TEMPORARY EROSION CONTROL SEEDING AND EROSION CONTROL BLANKET (TERC ECB) | | PAVEMENT REMOVAL, UNLESS OTHERWISE NOTED |

NOTES:

1. FOR PERMANENT DRAINAGE STRUCTURE AND PIPE INFORMATION SEE SHEETS 216 TO 221
2. PER STANDARD 2800001, ALL SEDIMENT BASINS TO BE PLACED AS SHOWN AND REMOVED AT THE END OF THE PROJECT. THE COST WILL BE INCLUDED IN THE CONTRACT UNIT PRICE BID PER CUBIC YARD FOR "EARTH EXCAVATION FOR EROSION CONTROL".
3. AGGREGATE EROSION CONTROL IS NOT REQUIRED FOR SEDIMENT BASINS WHERE THESE DISCHARGE TO STONE RIPRAP.
4. LATERAL SEWER PIPE TO MAINLINE SEWER SHALL HAVE THEIR UPSTREAM ENDS TEMPORARILY PLUGGED ACCORDING TO DETAILS OF SHEET 410, OR AS DIRECTED BY THE ENGINEER. PLUG WILL BE REMOVED UPON CONSTRUCTION OF REMAINING LATERAL PIPE. AS DIRECTED BY THE ENGINEER. COST OF TEMPORARY PLUG AND SUBSEQUENT REMOVAL FOR LATERAL STORM SEWER CONNECTIONS WILL NOT BE PAID FOR SEPARATELY, BUT WILL BE INCLUDED IN THE CONTRACT UNIT PRICE BID PER FOOT FOR STORM SEWERS, OF THE CLASS AND TYPE SPECIFIED.

REVISIONS	
NAME	DATE

ILLINOIS DEPARTMENT OF TRANSPORTATION
 FAI 55 AT FAP 338 ILLINOIS ROUTE 59
 SECTION: (26, 26HB-1&114) R-2
**EROSION CONTROL
 STAGE 3A**
 STA. 7486+00 TO STA. 7499+00

SCALE: 1"=50' DRAWN BY: MRK
 DATE: 03/14/08 CHECKED BY: TKL

TENG
TENG & ASSOCIATES, INC.
 ENGINEERS/ARCHITECTS/PLANNERS
 201 N. WASHINGTON AVE. CHICAGO, IL 60601
 TELEPHONE: 312.930.0800