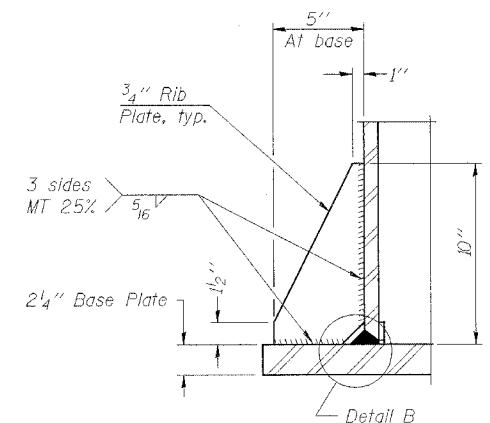
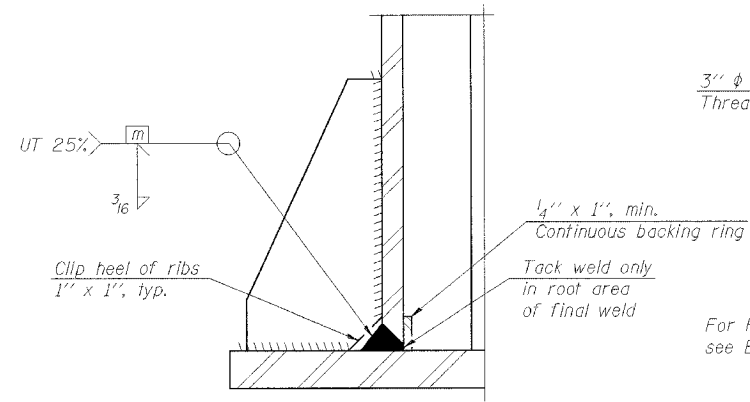


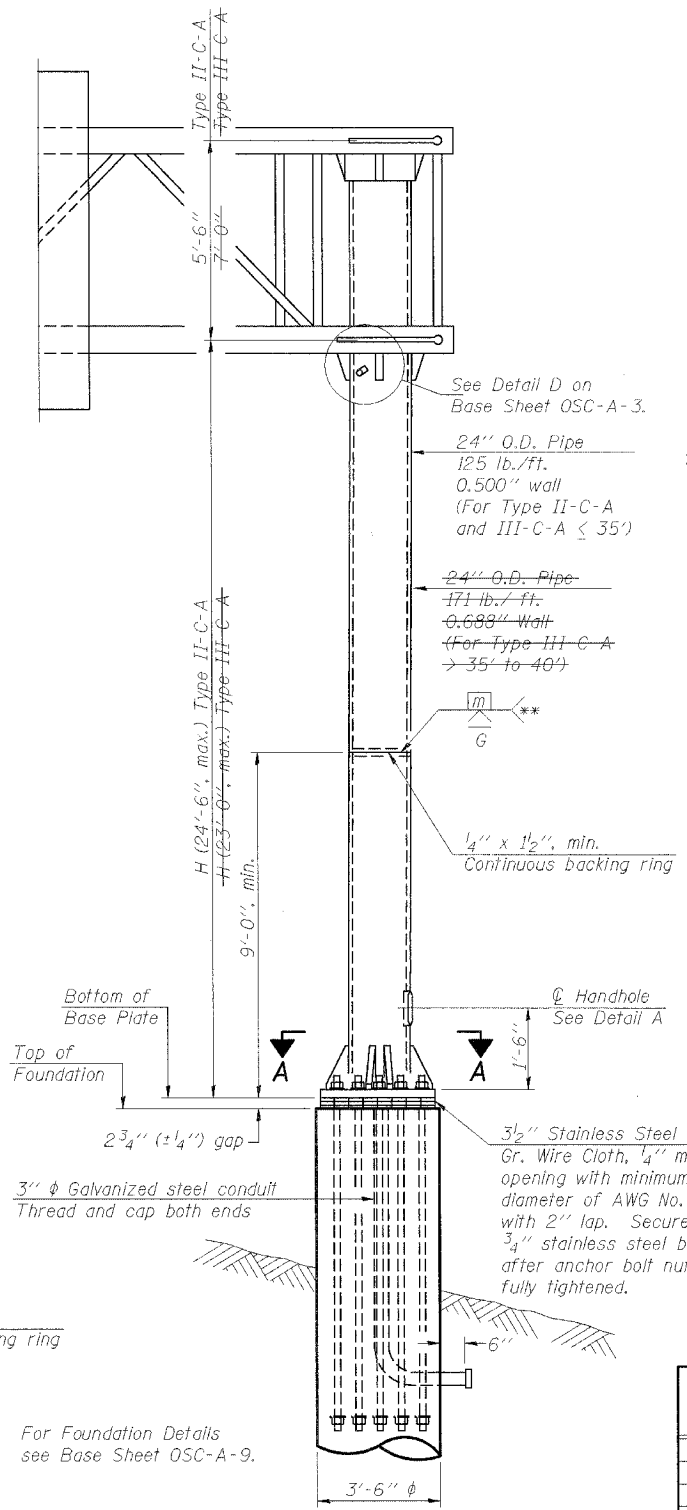
SECTION A-A



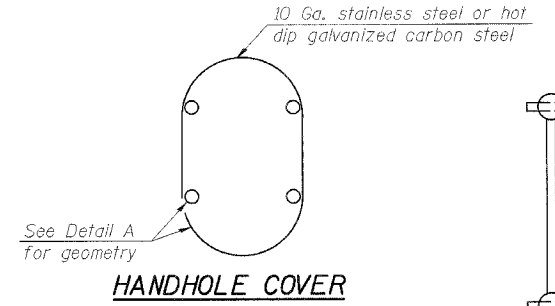
SECTION B-B



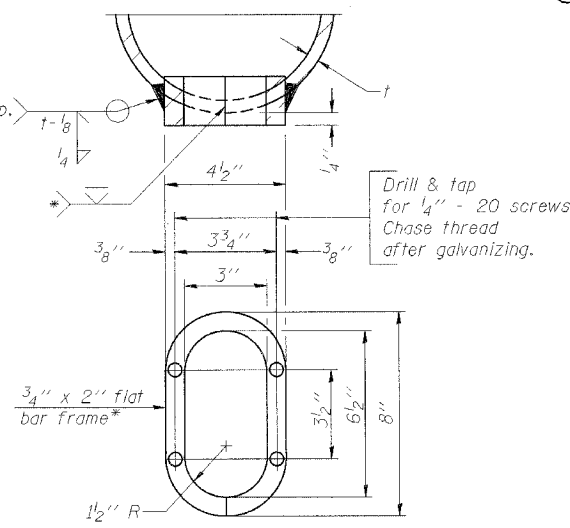
DETAIL B
(Typical rib)



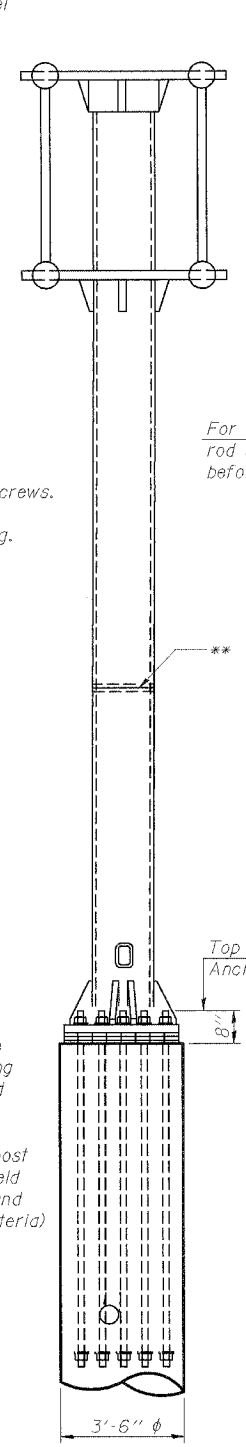
FRONT ELEVATION



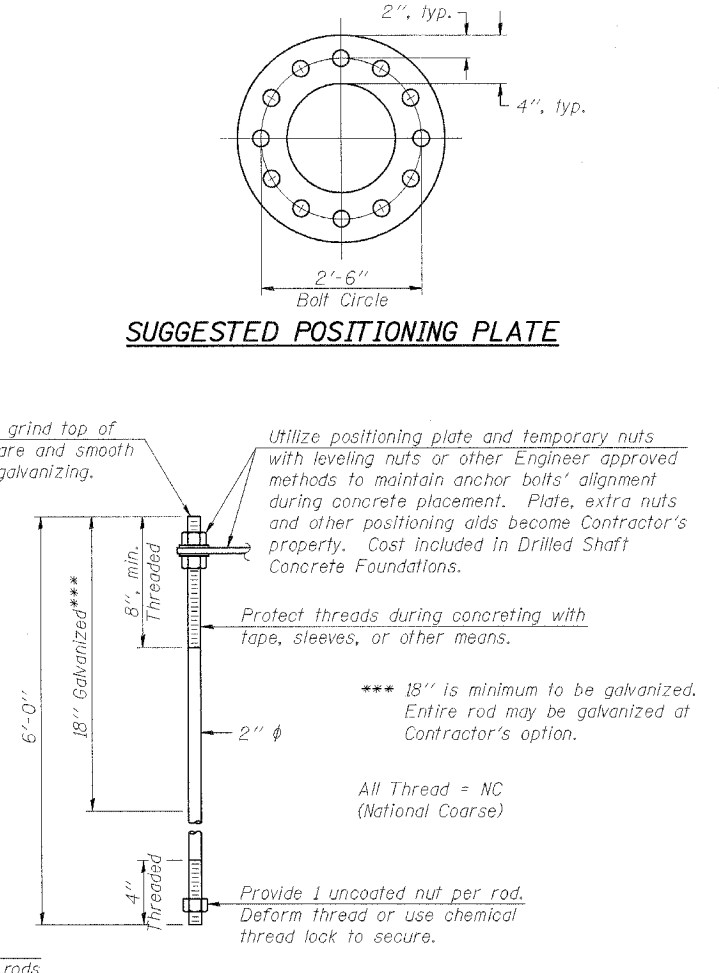
HANDHOLE COVER



DETAIL A



SIDE ELEVATION



ANCHOR ROD DETAIL

Anchor rods shall conform to AASHTO M314 Grade 105 and meet Charpy V-Notch (CVN) energy of 15 lb.-ft. at 10° F. before galvanizing. Galvanize the upper 18" (minimum***) and associated M291, Grade A, C or DH heavy hex nuts and hardened washers per AASHTO M232. No welding shall be permitted on rods. Provide an unfinished nut at bottom, a hexagon locknut and washer above base plate and a leveling nut and washer below base plate. Nuts shall each be tightened with 200 lb.-ft. minimum torque against base plate. Before or after threading, but before galvanizing, each anchor rod shall be ultrasonically tested (UT) by a Level II or III inspector, qualified in accord with ANSI guidelines, using a straight beam, 1/2" φ 3.5 mhz. transducer, to insure no rejectable flaws exist in the upper 18" (tension criteria). Cost of testing included in Drilled Shaft Concrete Foundations.

Structure Number	Station	H
IC0991055R250.46	63+00	21'-6"
IC0991055R250.76	79+00	22'-3"
IC0991055L250.93	88+00	22'-3"

Note: "H" based on 15'-0" or actual sign height, whichever is greater.

NUMBER	REVISION	DATE

REVISIONS	
NAME	DATE

ILLINOIS DEPARTMENT OF TRANSPORTATION
 FAI 55 AT FAP 338 ILLINOIS ROUTE 59
 SECTION: (26, 26HB-1 & 114) R-2

TYPE II-C-A & III-C-A TRUSS SUPPORT POST ALUMINUM TRUSS & STEEL POST

DATE: 03/14/08
 DRAWN BY: MDB
 CHECKED BY:
TENG

T:\DOCUMENT\193279\STRUCT\CON\OSC-A-5\OSC-A-5.DWG
 3-15-2008 12:29:24
 pen: table: N/A
 color: table: K:\STANDARD\TEXT\DATA\COLOR\TABLE.TBL
 BONDORLO
 TENG & ASSOCIATES, INC.
 ENGINEERS ARCHITECTS SURVEYORS
 200 N. MICHIGAN AVE. CHICAGO, IL 60601
 TEL: (312) 462-4000