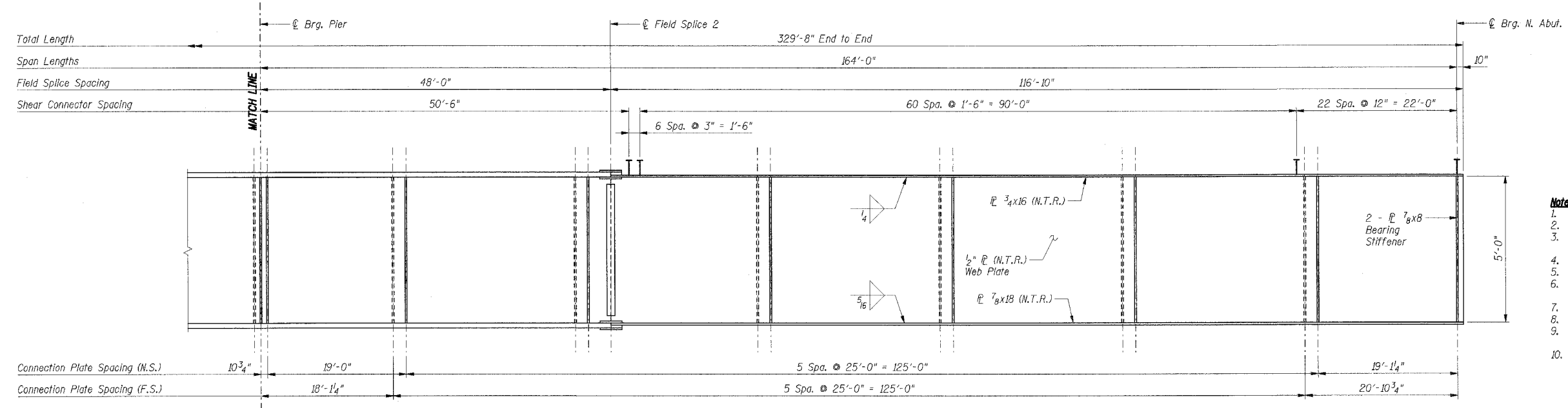
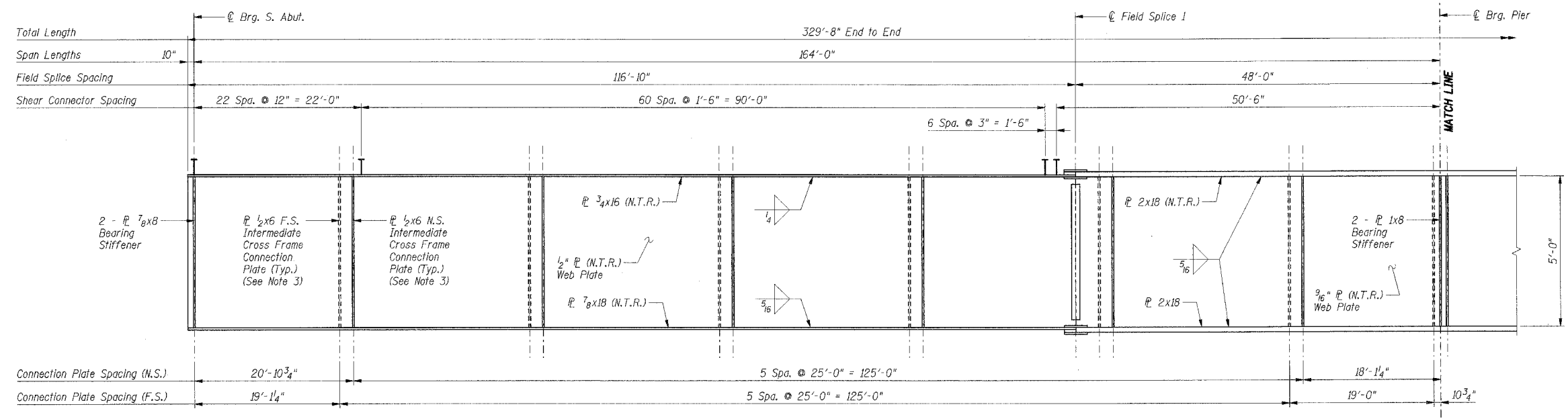


F.A.I. RTE.	SECTION	COUNTY	TOTAL SHEETS	SHEET NO.
59		WILL	608	358
STA.		TO STA.		
FED. ROAD DIST. NO. 1 ILLINOIS FED. AID PROJECT				
* (26, 26HB-1 & 114) R-2				
CONTRACT NO. 60363				

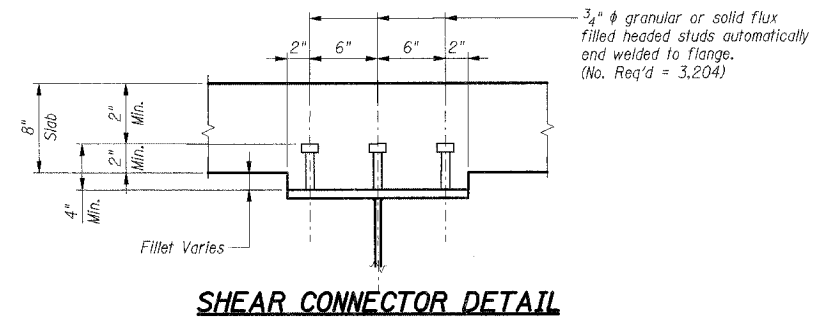


GIRDER ELEVATION

- Notes**
- See Note 1 on Sht. S-11.
 - See Note 2 on Sht. S-11.
 - Omit intermediate cross frame connection plates on exterior side of fascia girders 1 and 6.
 - For Camber Diagram and Top of Web Elevations see Sheet S-11.
 - For Cross Frame Details see Sheet S-13.
 - For Bearing Stiffener Details and Intermediate Cross Frame Connection Plate Details see Sheet S-13.
 - For Field Splice Details see Sheet S-13.
 - For Bearing Details see Sheet S-14.
 - N.S. denotes Near Side.
 - F.S. denotes Far Side.
 - Load carrying components designated "NTR" shall conform to the Supplemental Requirements for Notch Toughness, Zone 2.

BILL OF MATERIAL

Item	Unit	Total
Stud Shear Connectors	Each	3,204



SHEAR CONNECTOR DETAIL

SHT. S-12 OF S-24

REVISIONS	
NAME	DATE

ILLINOIS DEPARTMENT OF TRANSPORTATION
 F.A.P. ROUTE 338 (ILLINOIS ROUTE 59)
 IL ROUTE 59 OVER F.A.I. 55 (I-55)
 SECTION (26, 26HB-1 & 114) R-2
 STRUCTURE NUMBER 099-4642
 STATION 8021+17.13, WILL COUNTY

GIRDER ELEVATION

DRAWN BY: CCE
 CHECKED BY: MDB
 DATE: 03/14/08

TENG
 TENG & ASSOCIATES, INC.
 205 N. MICHIGAN AVE. CHICAGO, IL 60601
 TEL: 312.329.1000

I:\PROJECTS\2008\11\20080314\GIRDER ELEVATION\GIRDER ELEVATION.dwg
 3-13-2008, 12:20:42
 color: table; ka; standard; temp; data; color; table; ka;