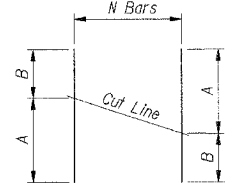


BAR LIST

Bar	No.	Size	Length	Shape
a158	20	#5	16'-0"	U
a159	4	#6	20'-10"	U
a161	36	#5	7'-10"	U
a162	20	#5	14'-10"	U
a163	4	#6	7'-10"	U
a164	4	#6	10'-2"	U
a165	4	#6	11'-0"	U
b158	21	#4	16'-8"	U
b159	2	#4	14'-4"	U
b160	4	#4	8'-6"	U
d158	20	#6	3'-10"	U
d159	4	#6	13'-3"	U
d163	18	#4	5'-2"	U
d164	35	#6	5'-7"	U
d165	35	#5	5'-7"	U
d166	15	#4	1'-3"	U
d167	15	#4	1'-3"	U
h158	17	#7	8'-5"	U
h159	17	#6	8'-3"	U
h160	34	#5	7'-8"	U
h161	24	#5	5'-8"	U
h162	8	#4	7'-10"	U
h163	12	#4	26'-10"	U
n160	18	#4	3'-5"	U
s158	12	#4	4'-5"	U
t160	14	#6	3'-0"	U
v158	60	#4	3'-1"	U
v159	36	#6	8'-3"	U
v160	14	#4	8'-7"	U
v161	8	#4	7'-1"	U
w158	8	#4	26'-10"	U
x158	40	#4	5'-6"	U
x159	6	#4	21'-5"	U
Item	Unit	Total		
Reinforcement Bars***	lbs	4,670		
Concrete Structures***	Cu Yd	22.0		

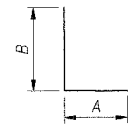
*** For information only, cost included with Box Culvert End Section, Culvert No. 3.

Bar	A	B	N
a164	7'-5"	2'-9"	4
a165	7'-10"	3'-2"	4
v160	6'-8"	1'-11"	7

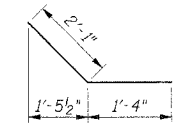


Bars a164, a165 & v160

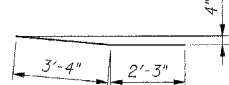
Bar	A	B
d158	1'-0"	2'-10"
d159	1'-0"	2'-2"
d163	2'-7"	2'-7"
d166	1'-0"	0'-8"
d167	0'-7"	0'-8"
h158	5'-8"	2'-9"
h159	5'-0"	3'-3"
h162	1'-8"	6'-2"
v159	6'-5"	1'-10"



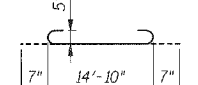
Bars d158, d159, d163, d166, d167, h158, h159, h162 & v159



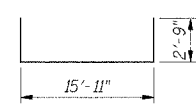
Bar n160



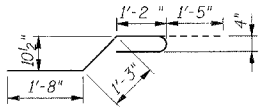
Bar d165



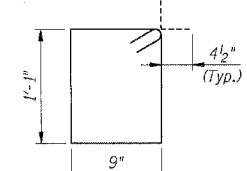
Bar a158



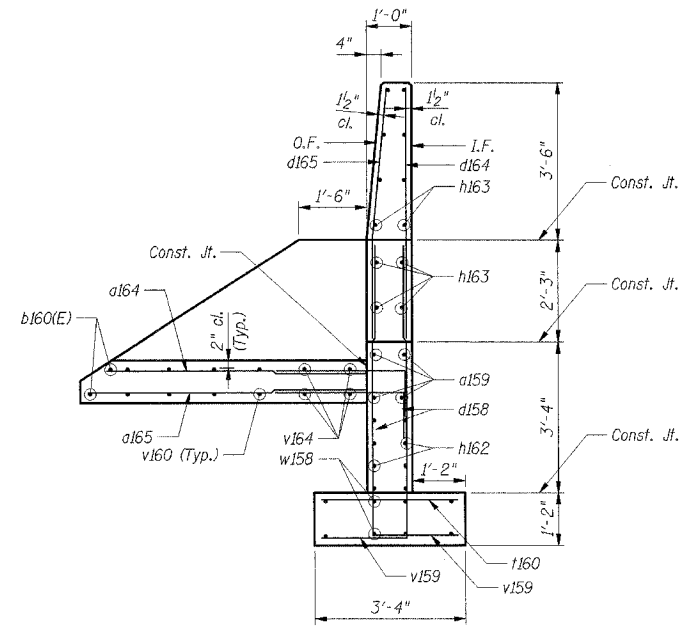
Bars x159



Bar x158



Bar s158



SECTION C-C

(Headwall reinforcement not shown for clarity)

- Notes:**
1. Work this sheet with Sht. BCC-3.
 2. Bars Indicated thus: 4x2-#5 ets. indicate 4 lines of bars with 2 lengths per line.
 3. I.F. Indicates inside face.
O.F. Indicates outside face.
E.F. Indicates each face.

SHT. BCC-4 OF BCC-5

REVISIONS	
NAME	DATE

ILLINOIS DEPARTMENT OF TRANSPORTATION
 F.A.P. ROUTE 338 (ILLINOIS ROUTE 59)
 IL ROUTE 59 TRIPLE BOX CULVERT
 SECTION (26, 26HB-1 & 114) R-2
 STRUCTURE NUMBER 099-0352
 STATION 7499+81.56, WILL COUNTY

**BOX CULVERT END SECTIONS 2
 DETAIL II**

DATE: 03/14/08

DRAWN BY: MX
 CHECKED BY: TMH

TENG

TENG & ASSOCIATES, INC.
 2000 W. MERRILL AVENUE, CHICAGO, IL 60609
 TELEPHONE: 312.642.0000