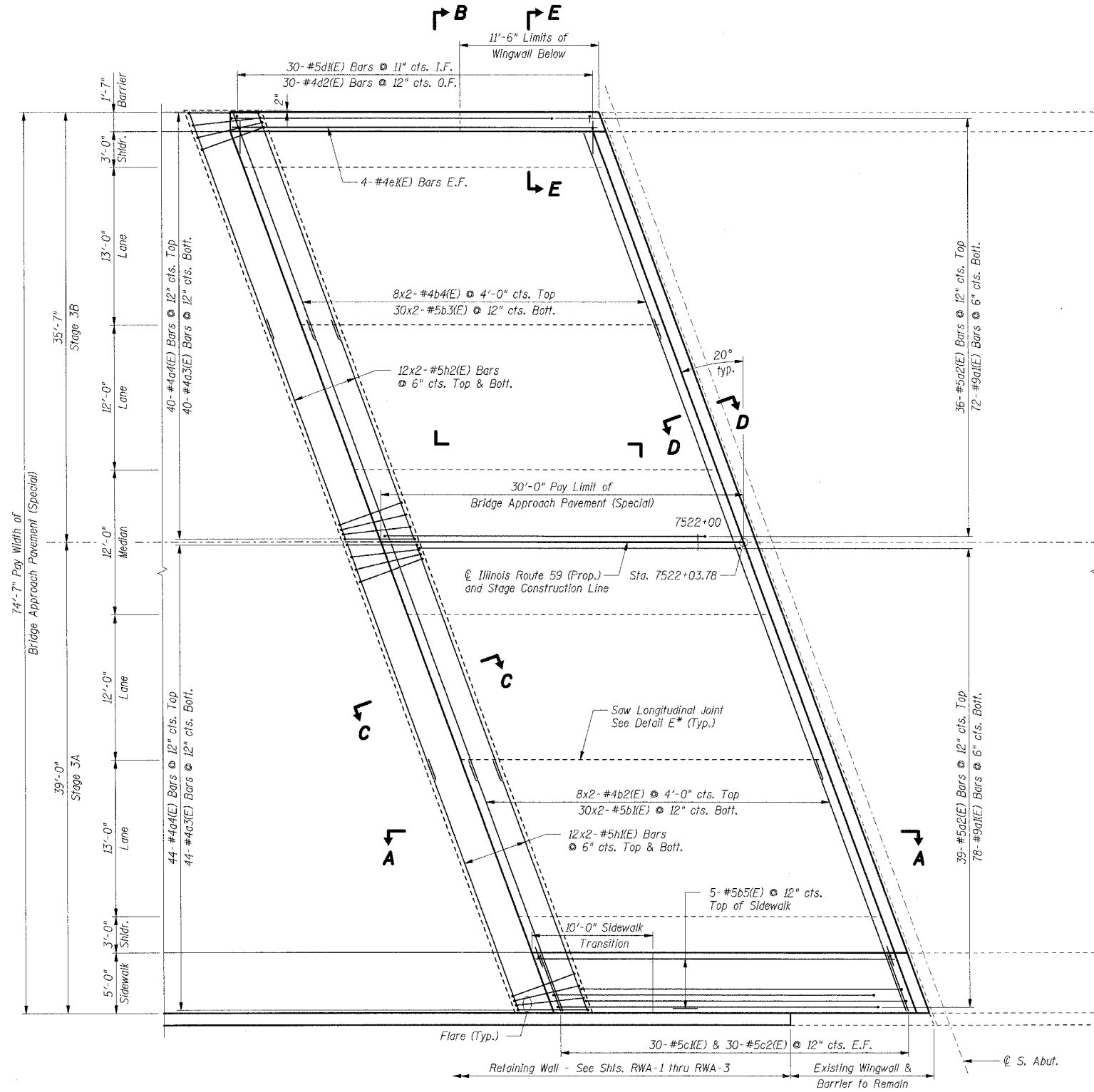


F.A.I. RTE.	SECTION	COUNTY	TOTAL SHEETS	SHEET NO.
59		WILL	608	408

STA. TO STA.  
FED. ROAD DIST. NO. 1 ILLINOIS FED. AID PROJECT

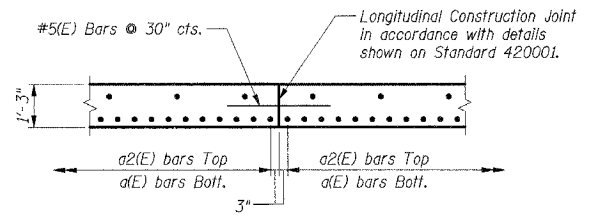
(26, 26HB-1 & 114) R-2  
CONTRACT NO. 60363



LAP LENGTHS	
Bar Size	Min. Lap
#4	1'-4"
#5	1'-8"

**SOUTH APPROACH PLAN**

\*Saw @ and Lane Edge



BILL OF MATERIAL		
Item	Unit	Total
Bridge Approach Pavement (Special)	Sq Yd	249
Bridge Deck Grooving	Sq Yd	220
Protective Coat	Sq Yd	272

- Notes:**
1. Work this Sheet with Sht. 409.
  2. Reinforcement bars designated (E) shall be epoxy coated.
  3. Bars indicated thus 30 x 2-#5 etc. indicates 30 lines of bars with 2 lengths per line.
  4. For Sections A-A thru E-E see Sht. 409.
  5. Application of Protective Coat shall include pavement surface and the inside and top faces of parapets and sidewalk.

APS-3 REVISIONS		
NAME	DATE	

ILLINOIS DEPARTMENT OF TRANSPORTATION  
 FAI 55 AT FAP 338 ILLINOIS ROUTE 59  
 SECTION: (26, 26HB-1 & 114) R-2  
**IL 59 BRIDGE OVER DUPAGE RVR  
 BRIDGE APPROACH PAVEMENT  
 PLAN**

DATE: 03/14/08  
 DRAWN BY: TMH  
 CHECKED BY:   
**TENG**

TENG & ASSOCIATES, INC.  
 215 N. MICHIGAN AVE. CHICAGO, IL 60601  
 TELEPHONE: 312.644.4000

\\TTP00PHLD01\...\_AFPS00VIMDGN...\_AFPS00VIMDGN  
 3-13-2008 12:17:05  
 T:\DOCUMENT\1832780\STRUCT\DRN\AFPS00VIMDGN  
 1 2 3 4 5 6 7 8 9 10 11 12 13 14 15 16 17 18 19 20 21 22 23 24 25 26 27 28 29 30 31 32 33 34 35 36 37 38 39 40 41 42 43 44 45 46 47 48 49 50 51 52 53 54 55 56 57 58 59 60 61 62 63