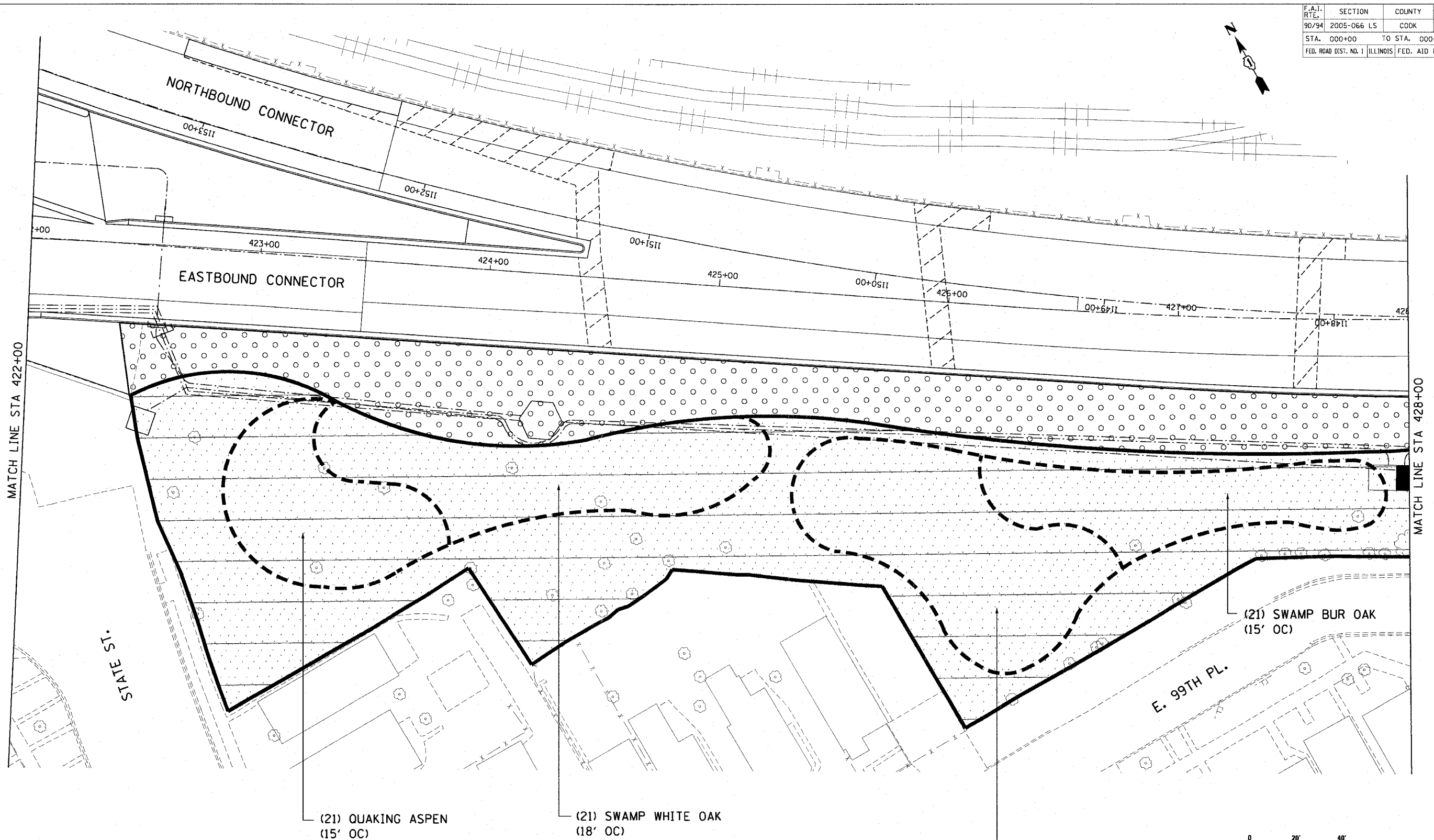


F.A.I. RTE.	SECTION	COUNTY	TOTAL SHEETS	SHEET NO.
90/94	2005-066 LS	COOK	77	17
STA. 000+00		TO STA. 000+00		
FED. ROAD DIST. NO. 1		ILLINOIS FED. AID PROJECT		
60A72				

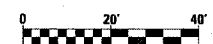


(21) QUAKING ASPEN  
(15' OC)

(21) SWAMP WHITE OAK  
(18' OC)

(23) KENTUCKY COFFEETREE  
(18' OC)

(21) SWAMP BUR OAK  
(15' OC)



SHT-8 of 67

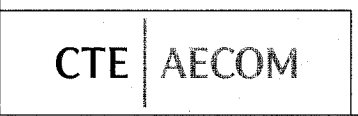
REVISIONS	
NAME	DATE

ILLINOIS DEPARTMENT OF TRANSPORTATION  
F.A.I. 90/94 (DAN RYAN EXPRESSWAY)  
NB ROADSIDE EMBANKMENT LANDSCAPE

**PROPOSED IMPROVEMENT**  
I-57 INTERCHANGE TO 31ST STREET

SCALE: 1"=20'  
DATE: JUNE 2008

DRAWN BY: LAM  
CHECKED BY: JWM



p:\p4\468\ch\130-roadside\_embankment\22a\_nb\922008\_17-157\_2.dwg 6/5/08 PM 3/19/2008