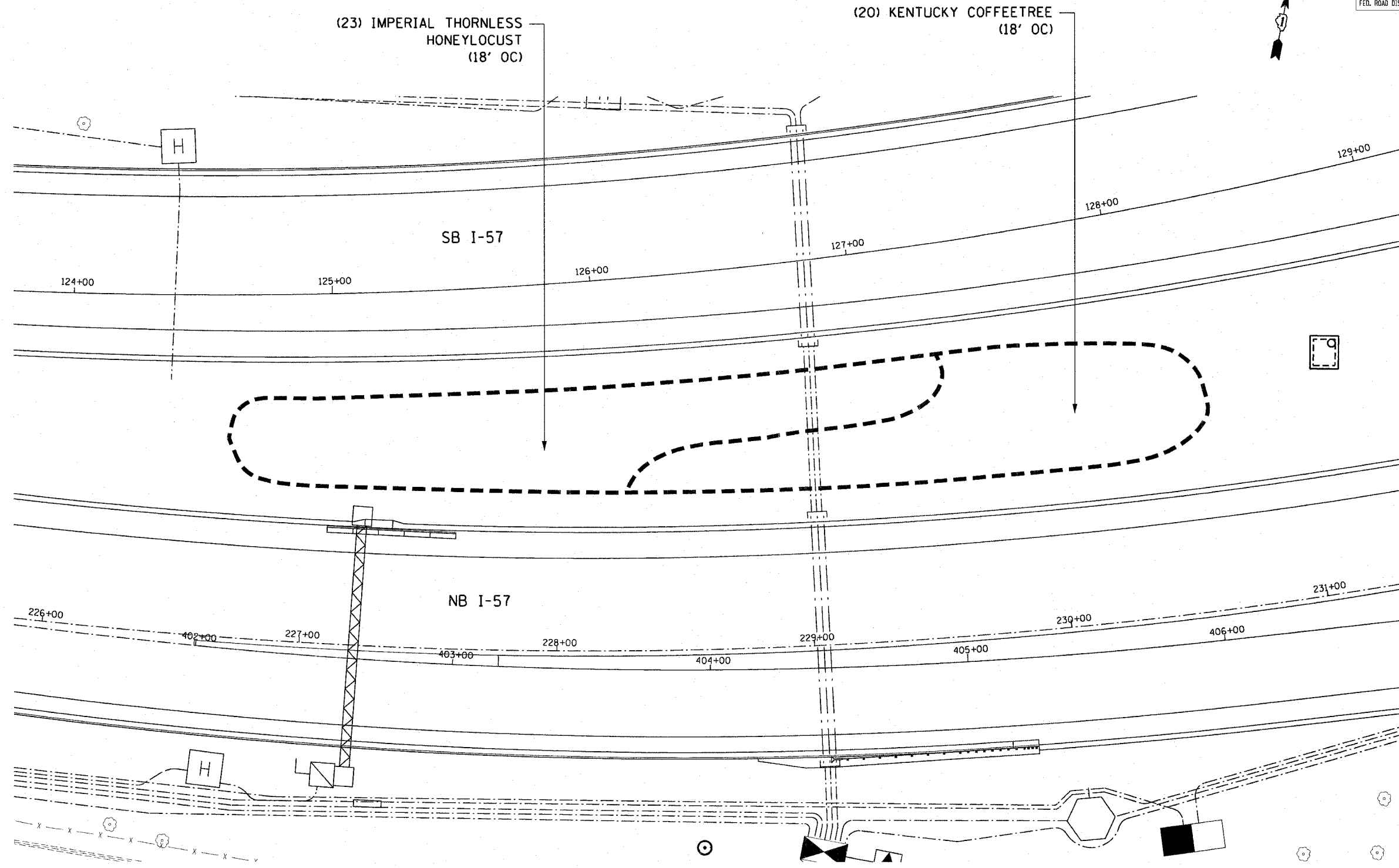


F.A.I. RTE.	SECTION	COUNTY	TOTAL SHEETS	SHEET NO.
90/94	2005-066 LS	COOK	77	24
STA. 000+00		TO STA. 000+00		
FED. ROAD DIST. NO. 1 ILLINOIS FED. AID PROJECT				
60A72				



(23) IMPERIAL THORNLESS
HONEYLOCUST
(18' OC)

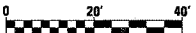
(20) KENTUCKY COFFEETREE
(18' OC)

SB I-57

NB I-57

CTE | AECOM

REVISIONS	
NAME	DATE



SHT-15 of 67
ILLINOIS DEPARTMENT OF TRANSPORTATION
F.A.I. 90/94 (DAN RYAN EXPRESSWAY)
NB ROADSIDE EMBANKMENT LANDSCAPE

PROPOSED IMPROVEMENT
I-57 INTERCHANGE TO 31ST STREET

SCALE: 1"=20'
DATE: JUNE 2008
DRAWN BY: LAM
CHECKED BY: JWM

P:\2004\468\civil\30-Roadside-embankment\15-157-22.svt