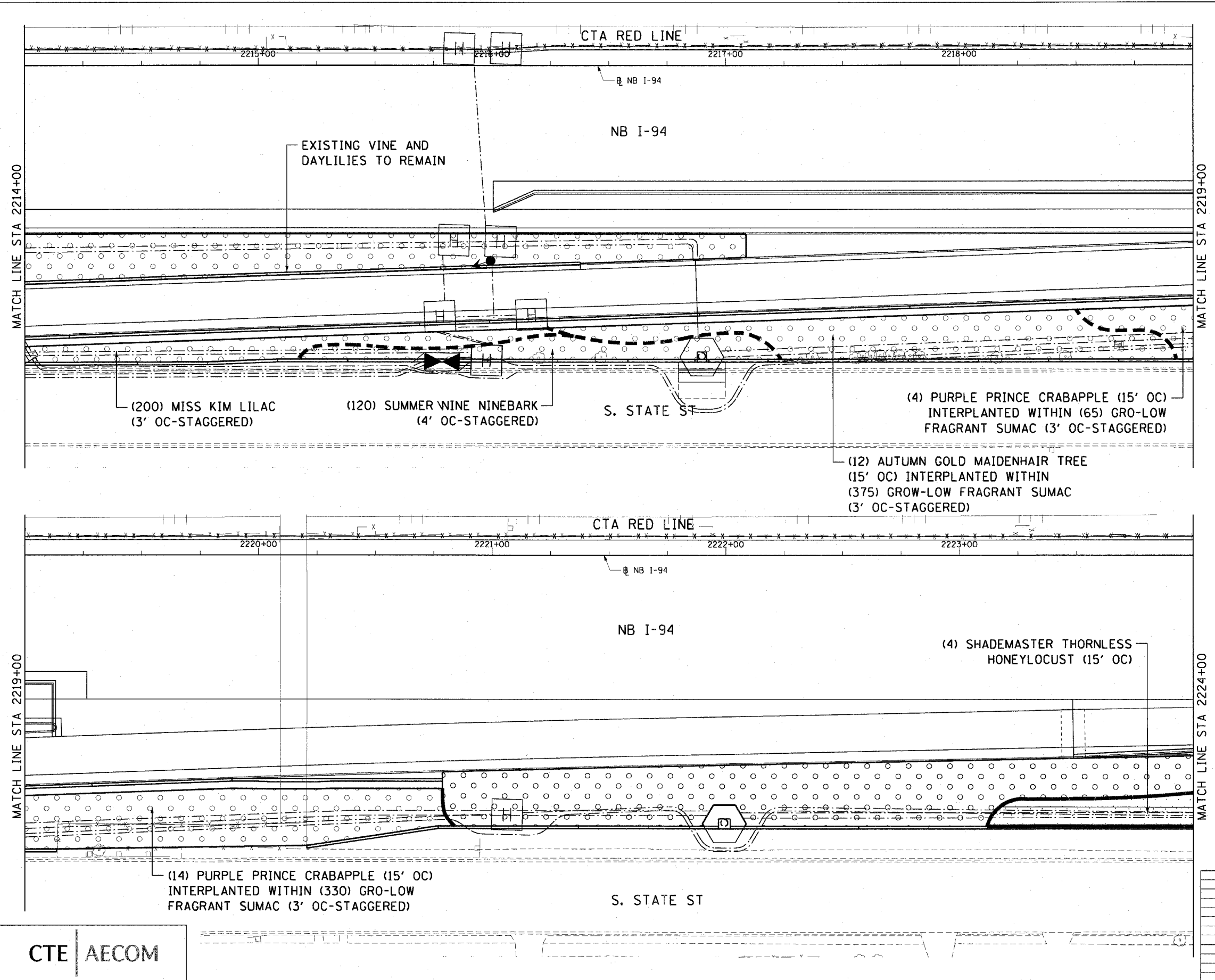


F.A.I. RTE.	SECTION	COUNTY	TOTAL SHEETS	SHEET NO.
90/94	2005-066 LS	COOK	77	33
STA. 2214+00		TO STA. 2224+00		
FED. ROAD DIST. NO. 1	ILLINOIS	FED. AID PROJECT		

60A72

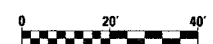


MATCH LINE STA 2214+00

MATCH LINE STA 2219+00

MATCH LINE STA 2219+00

MATCH LINE STA 2224+00



SHT-24 of 67

REVISIONS	
NAME	DATE

ILLINOIS DEPARTMENT OF TRANSPORTATION  
 F.A.I. 90/94 (DAN RYAN EXPRESSWAY)  
 NB ROADSIDE EMBANKMENT LANDSCAPE

**PROPOSED IMPROVEMENT**  
**I-57 INTERCHANGE TO 31ST STREET**

SCALE: 1"=20'  
 DATE: JUNE 2008

DRAWN BY: LAM  
 CHECKED BY: JWM



P:\2004\68\ctv\30-roadside embankment\stn\220 rd\622024\_2.dwg 6/19/2008 6:56:03 PM