

SUMMARY OF QUANTITIES

CODE NO.	ITEM	UNIT	URBAN		100% CITY
			QUANTITY	Y003	
C2007010	SHRUB, ROSA RADRAZZ (KNOCKOUT ROSE), CONTAINER GROWN, 3-GALLON	EACH	623	623	
C2003120	SHRUB, FORSYTHIA X INTERMEDIA HAPPY CENTENNIAL (HAPPY CENTENNIAL FORSYTHIA) 18" HEIGHT, CONTAINER	EACH	542	542	
A2005034	TREE, GYMNOCLADUS DIOICUS (KENTUCKY COFFEETREE), 10' HEIGHT, CLUMP FORM, BALLED AND BURLAPPED	EACH	10	10	
C2003353	SHRUB, HEPTACADIUM MICRONOIDES (SEVEN SON FLOWER), 8' HEIGHT, BALLED AND BURLAPPED	EACH	12	12	
C2004738	SHRUB, PHYSOCARPUS OPULIFOLIUS SUMMER WINE (SUMMER WINE COMMON NINEBARK), 2-1/2' HEIGHT, CONTAINER	EACH	222	222	
A2008618	TREE, ULMUS MORTON GLOSSY (TRIUMPH ELM), 3" CALIPER, BALLED AND BURLAPPED	EACH	10	10	
C2006019	SHRUB, RHUS COPALLINA VAR. LATIFOLIA MORTON (PRAIRIE FLAME SHINING SUMAC) 3' HEIGHT, CONTAINER	EACH	968	968	
X0325962	PERENNIAL PLANTS, ALLIUM BULBS	UNIT	58	58	
25000210	SEEDING, CLASS 2A	ACRE	0.79	0.79	
25000400	NITROGEN FERTILIZER NUTRIENT	POUND	72	72	
25000500	PHOSPHORUS FERTILIZER NUTRIENT	POUND	72	72	
25000600	POTASSIUM FERTILIZER NUTRIENT	POUND	72	72	
25000750	MOWING	ACRE	2.6	2.6	
25100630	EROSION CONTROL BLANKET	SQ YD	3,824	3,824	
28000510	INLET FILTERS	EACH	34	34	
42001300	PROTECTIVE COAT	SQ YD	297	297	
42400200	PORTLAND CEMENT CONCRETE SIDEWALK 5 INCH	SQ FT	2476	2476	
44000500	COMBINATION CURB AND GUTTER REMOVAL	FOOT	99	99	
44000600	SIDEWALK REMOVAL	SQ FT	2476	2476	
56104600	WATER VALVES 2"	EACH	2	2	
56200900	WATER SERVICE LINE 2 1/2"	FOOT	380	380	
66400550	CHAIN LINK FENCE, 4' (SPECIAL)	FOOT	1,971	1,971	
67100100	MOBILIZATION	L SUM	1	0.8	0.2
70101800	TRAFFIC CONTROL AND PROTECTION, (SPECIAL)	L SUM	1	0.8	0.2
* 78008200	POLYUREA PAVEMENT MARKING TYPE I - LETTERS AND SYMBOLS	SQ FT	59	59	
* 78008240	POLYUREA PAVEMENT MARKING TYPE I - LINE 8"	FOOT	61	61	
* 78008250	POLYUREA PAVEMENT MARKING TYPE I - LINE 12"	FOOT	501	501	
* 78008270	POLYUREA PAVEMENT MARKING TYPE I - LINE 24"	FOOT	70	70	
B2006320	TREE, SYRINGA RETICULATA IVORY SILK (IVORY SILK JAPANESE TREE LILAC), 2-1/2" CALIPER, TREE FORM, BALLED AND BURLAPPED	EACH	32	32	
B2006374	TREE, SYRINGA RETICULATA IVORY SILK (IVORY SILK JAPANESE TREE LILAC), 10' HEIGHT, CLUMP FORM, BALLED AND BURLAPPED	EACH	20	20	

CODE NO.	ITEM	UNIT	URBAN		100% CITY
			QUANTITY	Y003	
E2009001	VINE <del>EUONYMUS FORTUNEI</del> <sup>VAR.</sup> COLORATUS (PURPLE LEAF WINTERCREEPER), 1-QUART POT	EACH	2,150	2,150	
K0030400	PERENNIAL PLANTS, DAYLILIES	UNIT	23	23	
K0030450	PERENNIAL PLANTS, DAFFODIL BULBS	UNIT	86	86	
K0030470	PERENNIAL PLANT, ORNAMENTAL GRASS TYPE	UNIT	58	58	
X0301407	PERENNIAL PLANTS, GALLON POT	UNIT	63	63	
X0322256	TEMPORARY INFORMATION SIGNING	SQ FT	103	103	
X0325971	CAST-IN-PLACE DETECTABLE WARNING SURFACE	SQ FT	26	26	
X0325103	WATER METER IN VAULT, 2 INCH	EACH	2	2	
X0325104	WATER TAP, 2 INCH	EACH	2	2	
X0325105	IRRIGATION SYSTEM	SQ YD	46,875	46,875	
X0656300	PAVEMENT REMOVAL AND REPLACEMENT	SQ YD	249	249	
<del>X065740</del>	<del>CONCRETE MEDIAN SURFACE, 5" (MODIFIED)</del>	<del>SQ FT</del>	<del>192</del>	<del>192</del>	
XX000541	EXPLORATORY EXCAVATION	CU YD	18	18	
XX003710	BACKFLOW PREVENTER, 2"	EACH	2	2	
X0325970	SOIL CONDITIONER 3"	SQ YD	6,825	6,825	
<del>XX006326</del>	<del>TYPE K COPPER PIPE 2"</del>	<del>FOOT</del>	<del>425</del>	<del>425</del>	
XX104800	COMBINATION CONCRETE CURB AND GUTTER, TYPE B-V.12	FOOT	99	99	
Z0013798	CONSTRUCTION LAYOUT	L SUM	1		
<del>Z0076600</del>	<del>TRAINERS</del>	<del>HOUR</del>			
X0325106	IRRIGATION <sup>SYSTEM</sup> FALL SHUT-DOWN	EACH	2	2	
X0325107	IRRIGATION <sup>SYSTEM</sup> SPRING START-UP	EACH	2	2	
K1003460	LANDSCAPE MAINTENANCE	CAL MO	12	12	
C2002950	SHRUB, FORSYTHIA X INTERMEDIA COURTACOUR (GOLDLOCKS FORSYTHIA) 18" HEIGHT, CONTAINER	EACH	284	284	
C2002949	SHRUB, FORSYTHIA X INTERMEDIA COURDIJAU (GOLDEN PEEP FORSYTHIA) 18" HEIGHT, CONTAINER	EACH	286	286	
X0325604	WEED CONTROL, PRE-EMERGENT HERBICIDE	GALLON	2	2	
X7011015	TRAFFIC CONTROL AND PROTECTION (EXPRESSWAYS)	L SUM	1	1	
Z0048665	RAILROAD PROTECTIVE LIABILITY INSURANCE	L SUM	1	1	

NP=Non-Participating  
\* - Specialty Items

S00-1

REVISIONS	
NAME	DATE

ILLINOIS DEPARTMENT OF TRANSPORTATION  
F.A.I. 94/90 (DAN RYAN EXPRESSWAY)  
GATEWAY LANDSCAPING & IRRIGATION @ 35TH

SUMMARY OF QUANTITIES

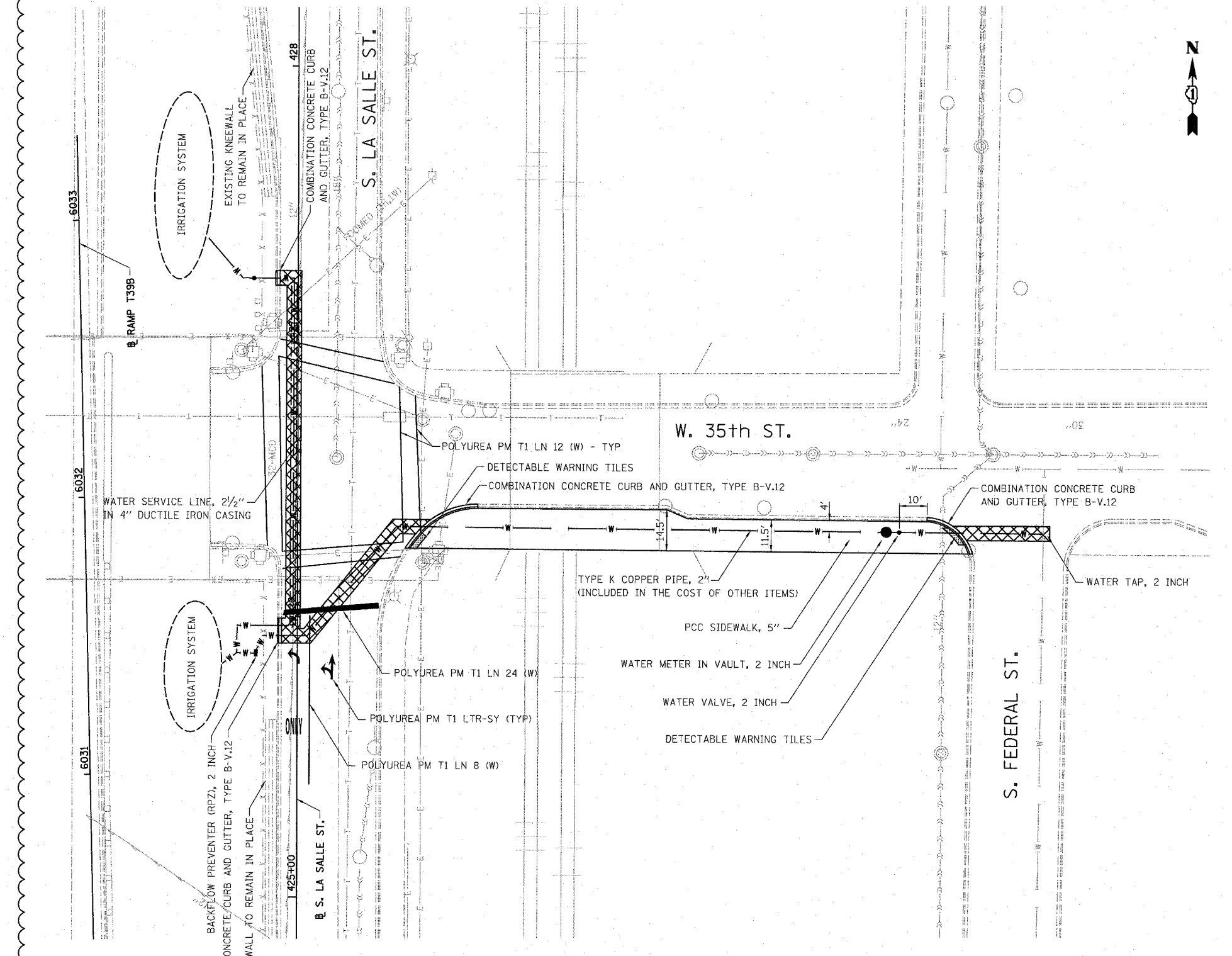
SCALE: NONE  
DATE: 03/13/07  
DRAWN BY: JDC  
CHECKED BY: DDM

Rev. 6-2-08  
Rev.

12/15/2008 12:00:52 AM

BOWMAN, BARRETT & ASSOCIATES INC  
CONSULTING ENGINEERS  
Chicago, Illinois  
312.228.0100  
www.bbanda.com

F.A.I.	SECTION	COUNTY	TOTAL SHEETS	SHEET NO.
94/90	*	COOK	38	15
STA.	TO STA.			
FED. ROAD DIST. NO.	ILLINOIS	FED. AID PROJECT		
60A75			* 2005-073 LS	

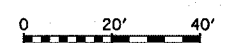


LEGEND:

 PAVEMENT REMOVAL AND REPLACEMENT

NOTES:

1. THE IRRIGATION SYSTEM IS CONTRACTOR DESIGNED AND APPROVED BY THE ENGINEER.
2. EXCAVATION MUST BE DONE BY HAND IN THE VICINITY OF UNDERGROUND UTILITIES.



PL-1

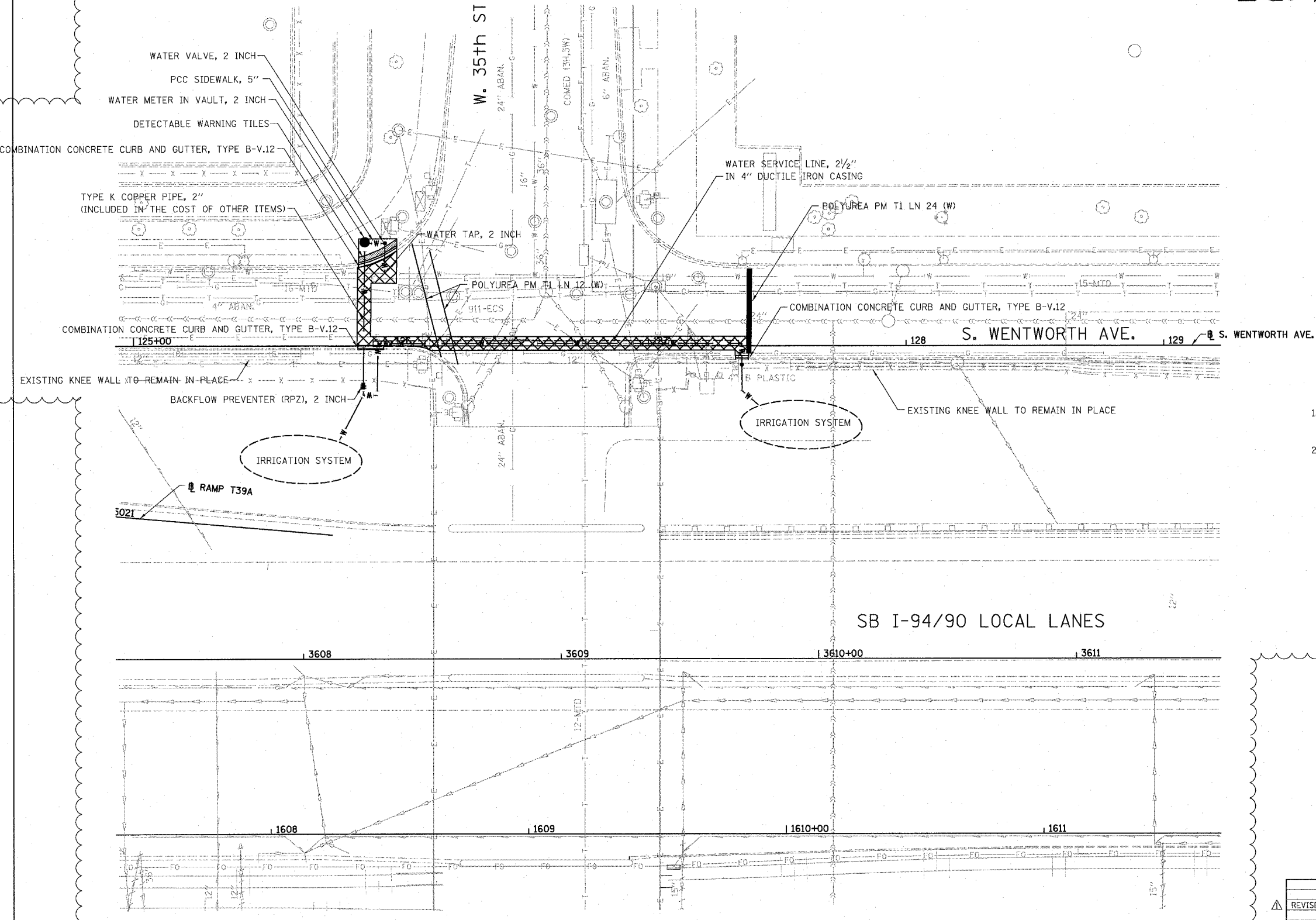
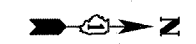
REVISIONS	
NAME	DATE
REVISD	5/30/08

ILLINOIS DEPARTMENT OF TRANSPORTATION  
 F.A.I. 94/90 (DAN RYAN EXPRESSWAY)  
 GATEWAY LANDSCAPING & IRRIGATION @ 35TH  
**LA SALLE STREET**  
**WATER SERVICE LINE PLAN**  
 SCALE: 1"=20'  
 DATE: 03/13/07  
 DRAWN BY: JDC  
 CHECKED BY: DDM

BOWMAN, BARRETT & ASSOCIATES INC.  
 CONSULTING ENGINEERS  
 Chicago, Illinois  
 312.228.0100  
 www.bbainc.com

3/4/05 PM 5/29/2008

F.A.I.	SECTION	COUNTY	TOTAL SHEETS	SHEET NO.
94/90		COOK	38	16
STA.	TO STA.			
FED. ROAD DIST. NO.	ILLINOIS	FED. AID PROJECT		
60A79				*2005-073 LS

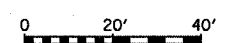


LEGEND:



NOTES:

1. THE IRRIGATION SYSTEM IS CONTRACTOR DESIGNED AND APPROVED BY THE ENGINEER.
2. EXCAVATION MUST BE DONE BY HAND IN THE VICINITY OF UNDERGROUND UTILITIES.



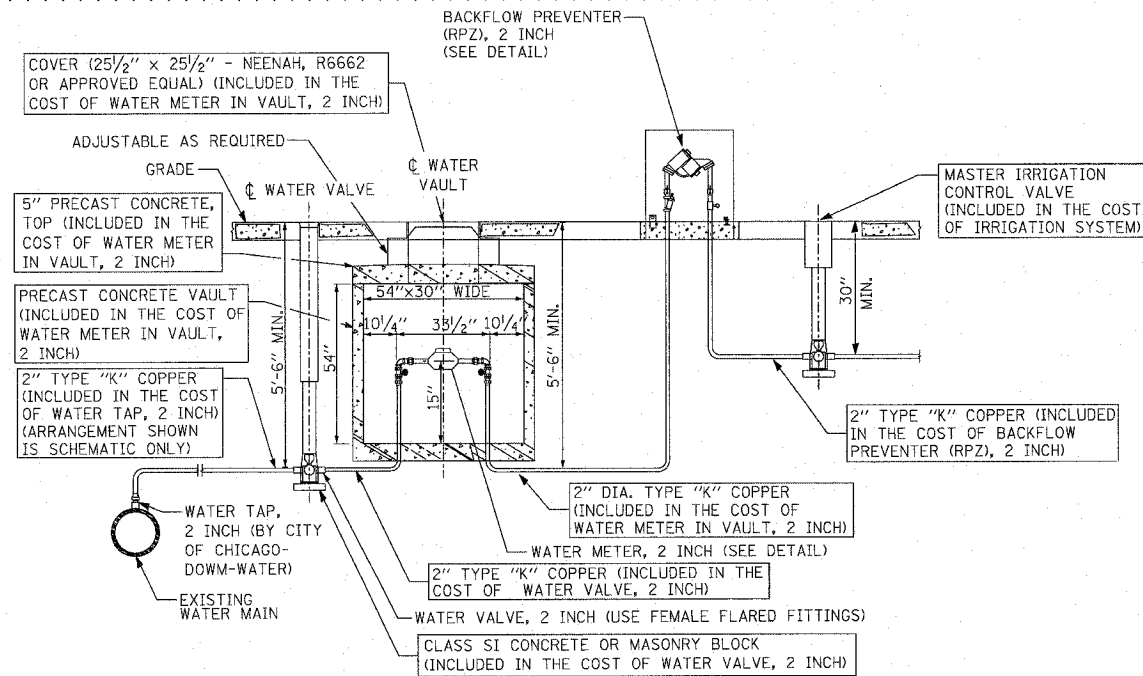
PL-2

REVISIONS	
NAME	DATE
REVISED	5/30/08

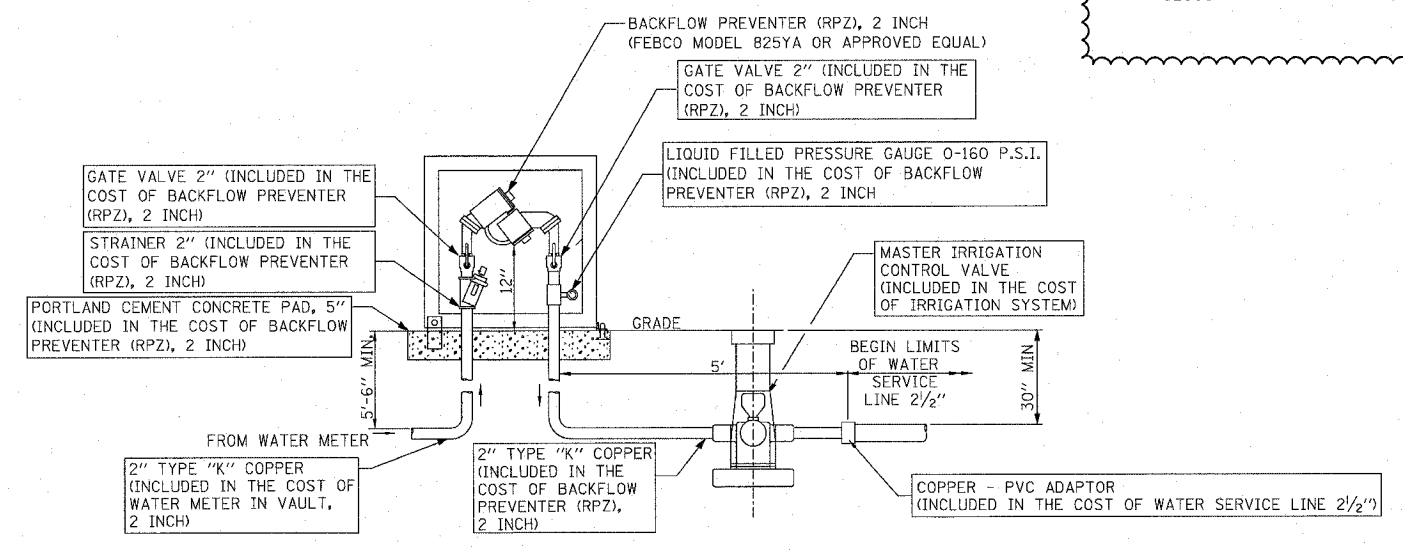
ILLINOIS DEPARTMENT OF TRANSPORTATION  
**F.A.I. 94/90 (DAN RYAN EXPRESSWAY)**  
 GATEWAY LANDSCAPING & IRRIGATION @ 35TH  
**WENTWORTH AVENUE**  
**WATER SERVICE LINE PLAN**  
 SCALE: 1"=20'  
 DATE: 03/13/07  
 DRAWN BY: JDC  
 CHECKED BY: DDM

BOWMAN, BARRETT & ASSOCIATES INC.  
 CONSULTING ENGINEERS  
 Chicago, Illinois  
 312.228.0100  
 www.bbainc.com

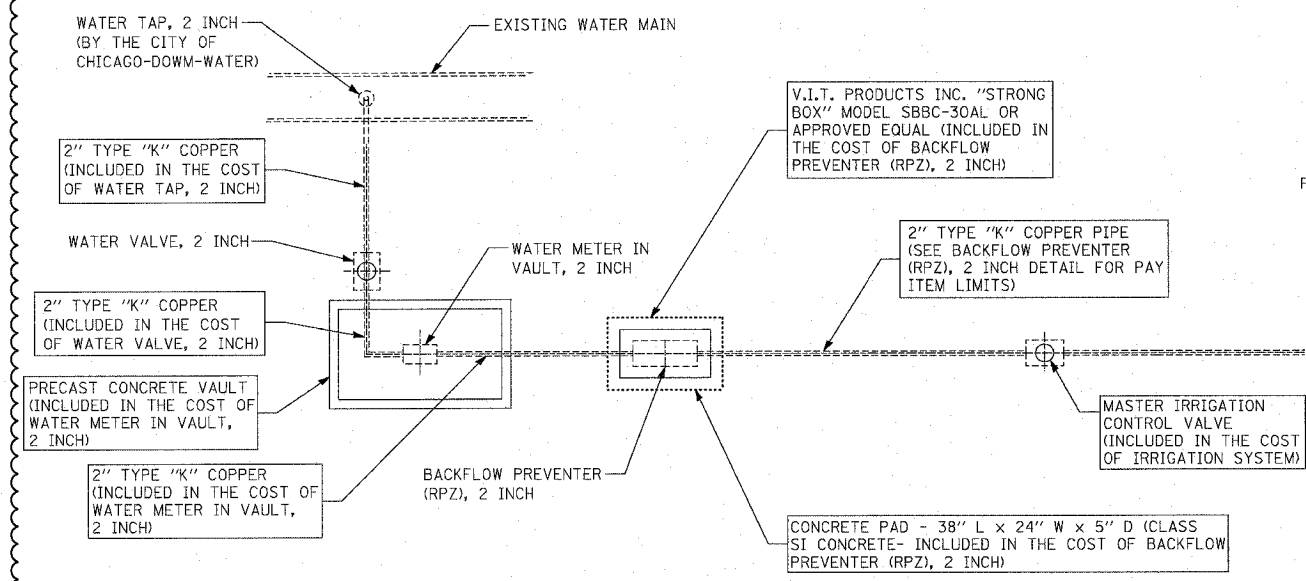
5/23/2008 3:44:48 PM



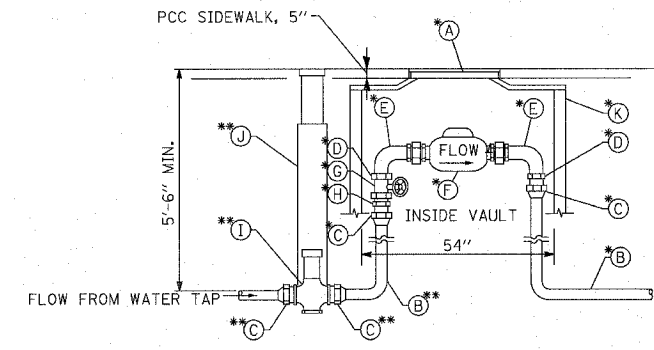
**TYPICAL METER INSTALLATION FOR 2" WATER SERVICE WITH BACK FLOW PREVENTER (RPZ), 2 INCH**



**BACKFLOW PREVENTER (RPZ), 2 INCH INSTALLATION LAYOUT**



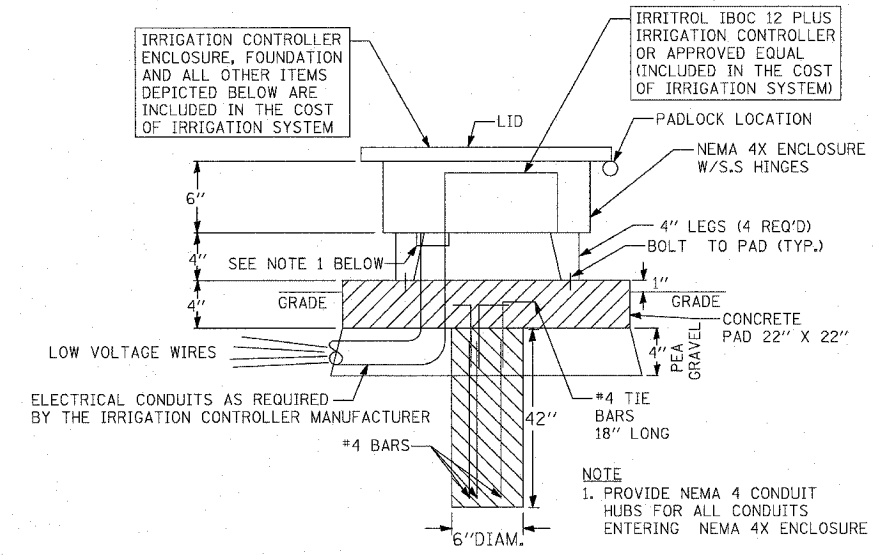
**WATER SERVICE CONNECTION PLAN (TYPICAL EQUIPMENT LAYOUT PLAN)**



- A FRAME AND LID (NEENAH R6662)
- B 2" TYPE "K" COPPER PIPE
- C FEMALE FLARED FITTING
- D BRASS BUSHING
- E BENT METER COUPLING
- F METER
- G FULL PORT CONTROL VALVE
- H MALE I.P.S. TO FLARED ADAPTER
- I ROUNDWAY
- J WATER VALVE ASSEMBLY
- K PRECAST CONCRETE VAULT

\*- ITEMS ARE INCLUDED IN THE COST OF WATER METER IN VAULT, 2 INCH  
 \*\*-ITEMS ARE INCLUDED IN THE COST OF WATER VALVE 2 INCH

**NEW COPPER 2" WATER SERVICE STANDARD METER VAULT**



**IRRIGATION CONTROLLER NEMA 4X ENCLOSURE - DETAIL N.T.S.**

BOWMAN, BARRETT & ASSOCIATES INC.  
 CONSULTING ENGINEERS  
 Chicago, Illinois  
 312.228.0100  
 www.bbandainc.com

REVISIONS	
NAME	DATE
Δ REVISED	5/30/08

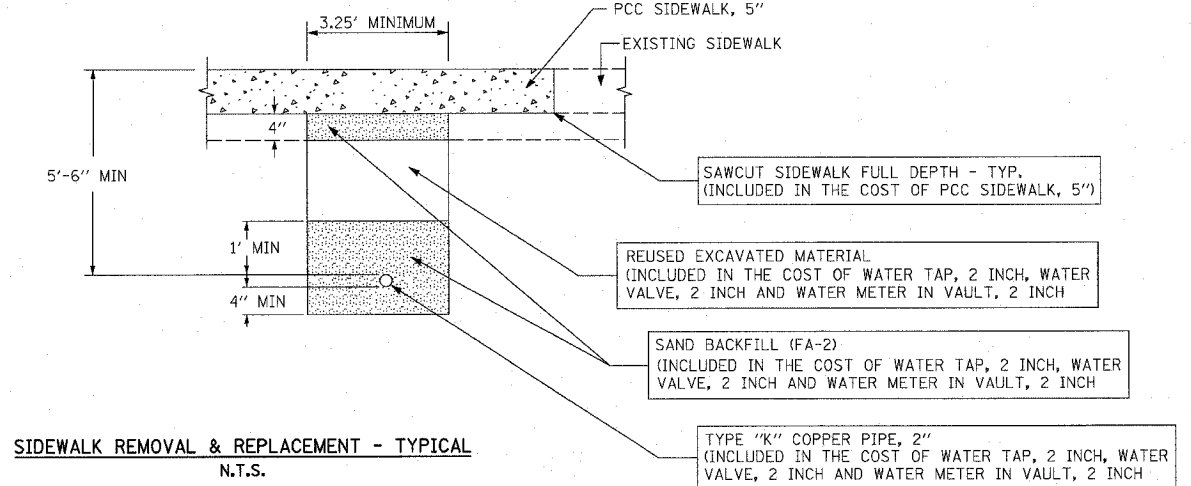
ILLINOIS DEPARTMENT OF TRANSPORTATION  
 F.A.I. 94/90 (DAN RYAN EXPRESSWAY)  
 GATEWAY LANDSCAPING & IRRIGATION @ 35TH  
 CIVIL DETAILS  
**WATER SERVICE INSTALLATION**  
 SCALE: NTS  
 DATE: 03/13/07  
 DRAWN BY: JDC  
 CHECKED BY: DM

CDT-02

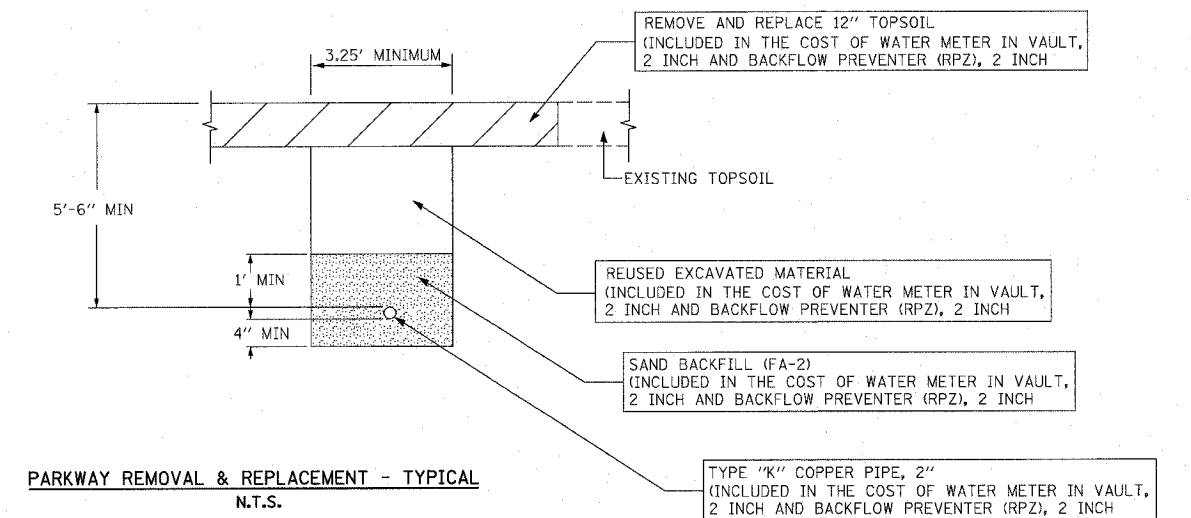
M:\660\9400\9401\22F\22F\_SHEET S660\_22F0102.dwg 3/15/08 3:15:43 PM

F.A.I.	SECTION	COUNTY	TOTAL SHEETS	SHEET NO.
94/90	*	COOK	38	29
STA.	TO STA.			
FED. ROAD DIST. NO. ILLINOIS			FED. AID PROJECT	
62303			• 2005-073 LS	

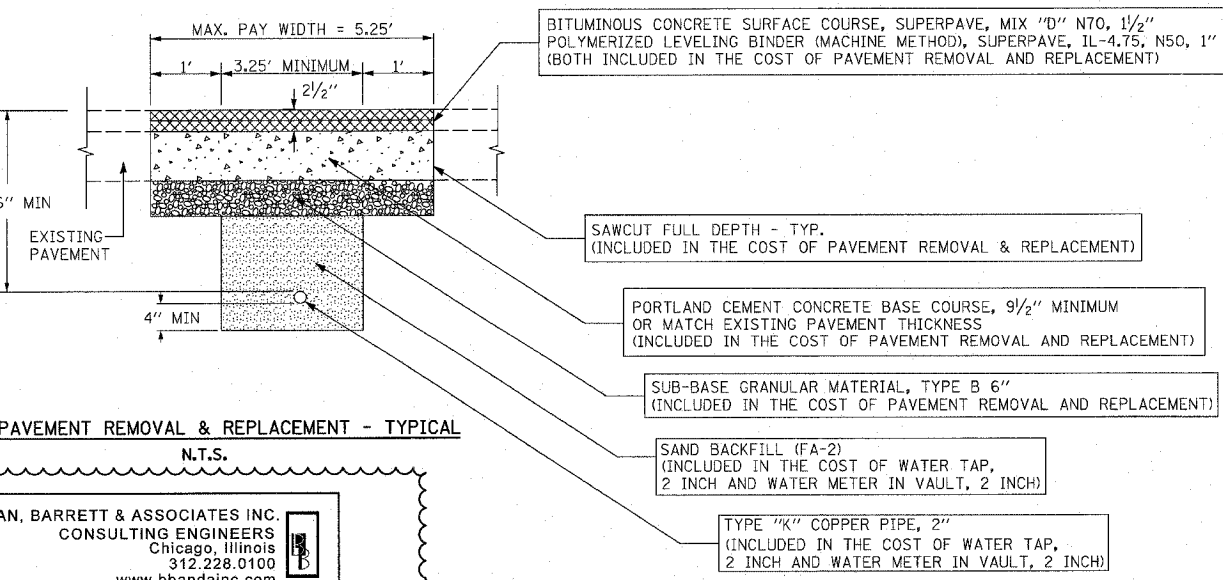
MAG600004-01M122F122F SHEET 5660-22F00103.dgn



**SIDEWALK REMOVAL & REPLACEMENT - TYPICAL**  
N.T.S.



**PARKWAY REMOVAL & REPLACEMENT - TYPICAL**  
N.T.S.



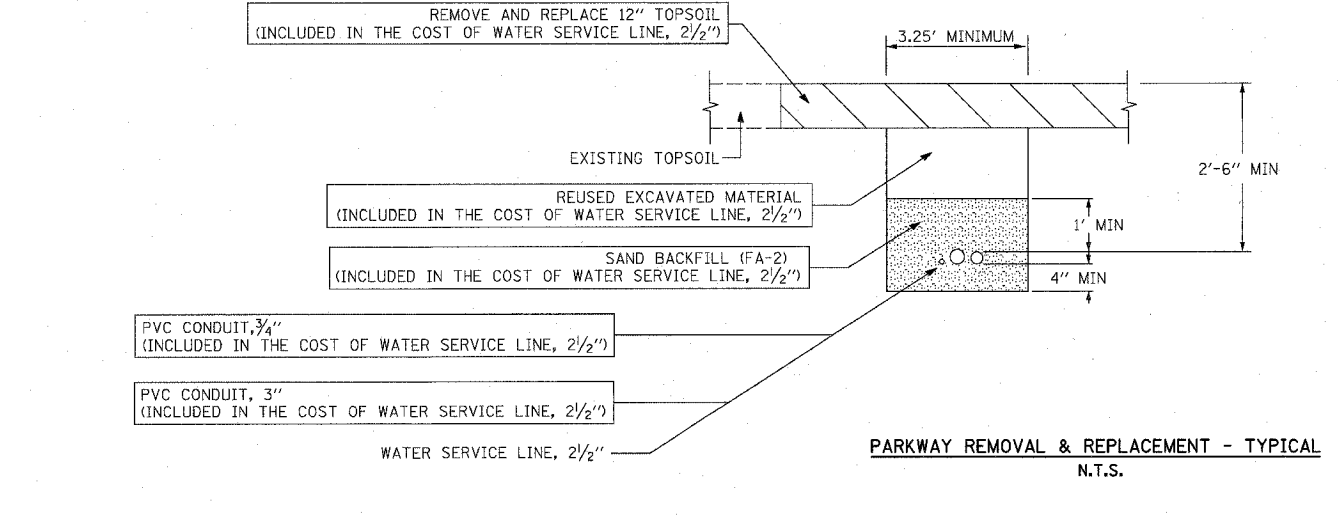
**PAVEMENT REMOVAL & REPLACEMENT - TYPICAL**  
N.T.S.

BOWMAN, BARRETT & ASSOCIATES INC.  
CONSULTING ENGINEERS  
Chicago, Illinois  
312.228.0100  
www.bbandainc.com

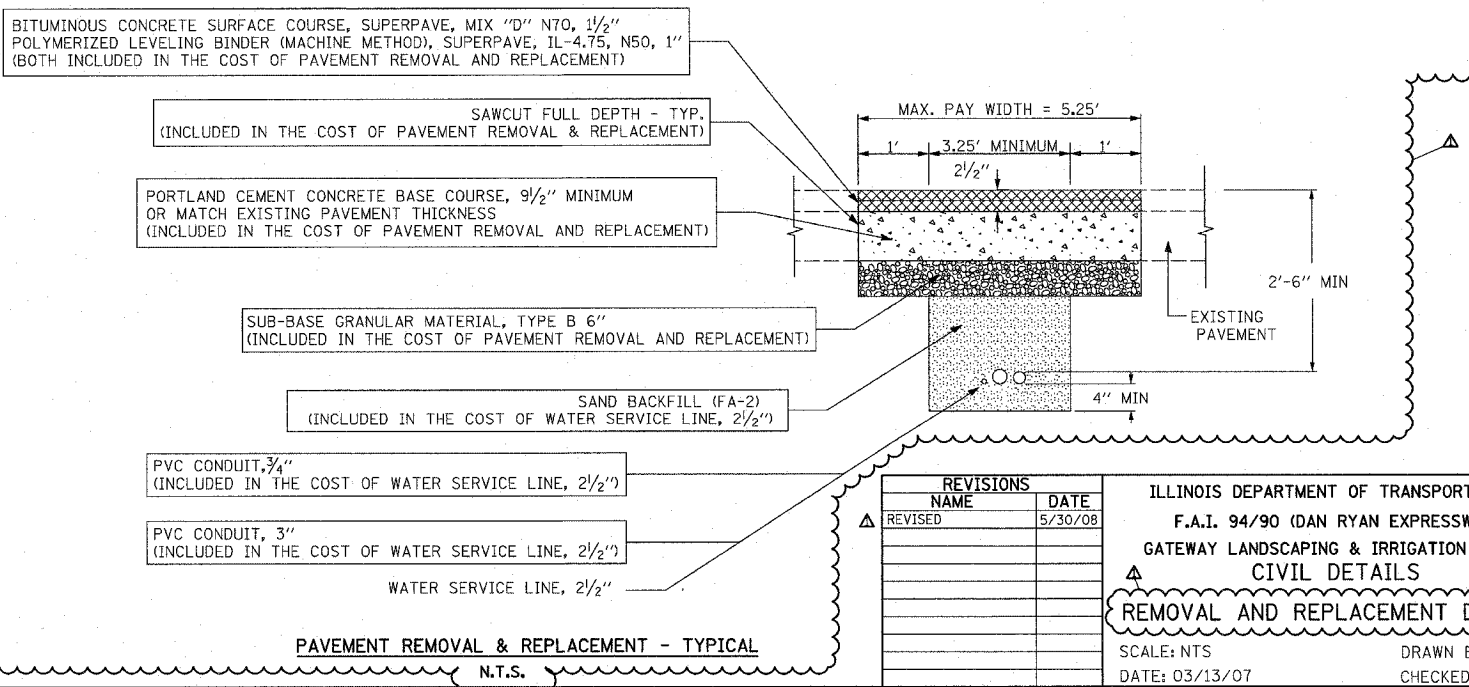
TYPE K COPPER PIPE, 2"  
WATER SERVICE, LINE 2 1/2"

**NOTES:**

1. ALL BACKFILL MATERIAL (SAND BACKFILL, SUB-BASE GRANULAR MATERIAL, TYPE B AND REUSED EXCAVATED MATERIAL) SHALL BE DEPOSITED IN UNIFORM LIFTS NOT EXCEEDING 12" IN DEPTH, LOOSE MEASUREMENT, AND EACH LIFT SHALL BE COMPACTED BY MECHANICAL MEANS TO THE SATISFACTION OF THE ENGINEER.
2. PAVEMENT SHALL BE REMOVED TO NEAREST CONSTRUCTION JOINT IF TRENCH EDGE IS 2' OR LESS FROM JOINT (TO BE DETERMINED BY THE ENGINEER). THE MAX. PAY WIDTH WILL BE INCREASED ACCORDINGLY AT ANY SUCH LOCATIONS.
3. BITUMINOUS MATERIALS (PRIME COAT) SHALL BE PLACED ON THE NEWLY PLACED PORTLAND CEMENT CONCRETE BASE COURSE, 9/2" AND ON THE NEWLY PLACED POLYMERIZED LEVELING BINDER (MACHINE METHOD), SUPERPAVE, IL-4.75, N50, 1"



**PARKWAY REMOVAL & REPLACEMENT - TYPICAL**  
N.T.S.



**PAVEMENT REMOVAL & REPLACEMENT - TYPICAL**  
N.T.S.

REVISIONS		DATE
NAME		
REVISOR		5/30/08

ILLINOIS DEPARTMENT OF TRANSPORTATION  
F.A.I. 94/90 (DAN RYAN EXPRESSWAY)  
GATEWAY LANDSCAPING & IRRIGATION @ 35TH  
CIVIL DETAILS  
**REMOVAL AND REPLACEMENT DETAILS**  
SCALE: NTS  
DATE: 03/13/07  
DRAWN BY: Jdc  
CHECKED BY: DM

CDT-03  
5/29/2008 3:46:17 PM

F.A.I.	SECTION	COUNTY	TOTAL SHEETS	SHEET NO.
94/90	*	COOK	38	30
STA.		TO STA.		
FED. ROAD DIST. NO., ILLINOIS	FED. AID PROJECT			
62303	• 2005-073 LS			



PAGE INTENTIONALLY LEFT BLANK

N:\660\660\cdot\civil\2005-073-LS\CDT-04.dgn

BOWMAN, BARRETT & ASSOCIATES INC.  
CONSULTING ENGINEERS  
Chicago, Illinois  
312.228.0100  
www.bbandainc.com



REVISIONS	
NAME	DATE
Δ REVISED	5/30/08

ILLINOIS DEPARTMENT OF TRANSPORTATION  
F.A.I. 94/90 (DAN RYAN EXPRESSWAY)  
GATEWAY LANDSCAPING & IRRIGATION @ 35TH  
CIVIL DETAILS

SCALE: NTS  
DATE: 03/13/07

DRAWN BY: CDOT  
CHECKED BY: CDOT

CDT-04

5/29/2008 3:16:45 PM