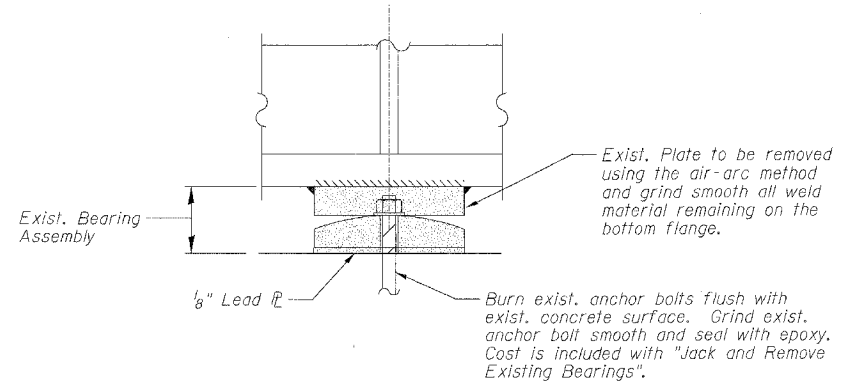


JACKING CLEARANCE SCHEDULE

F.A.I.	SECTION	COUNTY	TOTAL SHEETS	SHEET NO.
94/90	2005-086 1	COOK	228	38
STA.	TO STA.			
FED. ROAD DIST. NO.	ILLINOIS	FED. AID PROJECT		
60B07				

Bearing Location	Pier	Girder	'A'	'B' (inches)	Bearing Location	Pier	Girder	'A'	'B' (inches)				
016-0137	8	11S (1)	3'-6"	14.79	22	11S (63)	2'-6"	8.78					
		10S (2)		15.75		10S (64)		8.76					
		9S (3)		15.75		9S (65)		8.75					
		8S (4)		15.75		8S (66)		8.75					
		2S-7S & 1N-5N (5-10 & 12-16)		15.75		7S (67)		8.75					
		1S (11)		14.75		6S (68)		9.75					
		6N (17)		15.75		5S-2S (69-72)		9.75					
		7N (18)		14.75		1S (73)		8.75					
		8N (19)		14.75		1N-5N (74-78)		9.75					
		9N (20)		14.76		6N (79)		9.75					
016-0137	10	10N (21)	3'-6"	14.76	2	7N (80)	3'-0"	8.75					
		11N (22)		14.76		8N (81)		8.75					
		10S (23)		14.75		9N (82)		8.76					
		9S (24)		15.75		10N (83)		8.76					
		8S (25)		15.75		11N (84)		8.84					
		7S (26)		15.75		8S-1S & 1N-8N (13-28)		9.25					
		6S (27)		15.75		13S (42)		11.30					
		5S-2S & 1N-5N (28-31 & 33-37)		15.75		12S (43)		11.29					
		1S (32)		14.75		11S (44)		11.27					
		6N (38)		15.75		10S (45)		11.27					
016-0137	12	7N (39)	3'-6"	14.75	5	9S (46)	3'-0"	11.26					
		8N (40)		14.75		8S (47)		11.25					
		9N (41)		14.75		7S (48)		11.25					
		10N (42)		14.75		6S-2S (49-53)		11.25					
		10S (23)		14.75		1S (54)		11.25					
		9S (24)		15.75		1N-6N (55-60)		11.25					
		8S (25)		15.75		7N (61)		11.25					
		7S (26)		15.75		8N (62)		11.25					
		6S (27)		15.75		9N (63)		11.25					
		5S-2S & 1N-5N (28-31 & 33-37)		15.75		10N (64)		11.25					
016-0137	14	1S (32)	3'-6"	14.75	3	11N (65)	3'-6"	11.26					
		6N (38)		15.75		12N (66)		11.26					
		7N (39)		14.75		13N (67)		11.26					
		8N (40)		14.75		8S (81)		15.25					
		9N (41)		14.75		7S-1S & 1N-5N (7L-1L & 1R-5R)		15.25					
		10N (42)		14.75		6N (6R)		15.25					
		10S (23)		14.75		7N (7R)		15.26					
		9S (24)		15.75		8N (8R)		15.27					
		8S (25)		15.75		8S-1S & 1N-8N (8L-1L & 1R-8R)		15.25					
		7S (26)		15.75		8S-1S & 1N-8N (8L-1L & 1R-8R)		15.25					
016-0137	16	6S (27)	3'-6"	15.75	4	8S-1S & 1N-8N (8L-1L & 1R-8R)	3'-6"	15.25					
		5S-2S & 1N-5N (28-31 & 33-37)		15.75		8S-1S & 1N-8N (8L-1L & 1R-8R)		15.25					
		1S (32)		14.75		8S-1S & 1N-8N (8L-1L & 1R-8R)		15.25					
		6N (38)		15.75		8S-1S & 1N-8N (8L-1L & 1R-8R)		15.25					
		7N (39)		15.75		8S-1S & 1N-8N (8L-1L & 1R-8R)		15.25					
		8N (40)		15.75		8S-1S & 1N-8N (8L-1L & 1R-8R)		15.25					
		9N (41)		15.75		8S-1S & 1N-8N (8L-1L & 1R-8R)		15.25					
		10N (42)		14.75		8S-1S & 1N-8N (8L-1L & 1R-8R)		15.25					
		10S (43)		14.75		8S-1S & 1N-8N (8L-1L & 1R-8R)		15.25					
		9S (44)		15.75		8S-1S & 1N-8N (8L-1L & 1R-8R)		15.25					
016-0137	20	6S-2S (47-51)	3'-6"	15.75	6	8S-1S & 1N-8N (8L-1L & 1R-8R)	3'-6"	15.25					
		1S (52)		14.75		8S-1S & 1N-8N (8L-1L & 1R-8R)		15.25					
		1N-6N (53-58)		14.75		8S-1S & 1N-8N (8L-1L & 1R-8R)		15.25					
		7N-9N (59-61)		14.75		8S-1S & 1N-8N (8L-1L & 1R-8R)		15.25					
		10N (62)		14.25		8S-1S & 1N-8N (8L-1L & 1R-8R)		15.25					
		11S (63)		8.76		8S-1S & 1N-8N (8L-1L & 1R-8R)		15.25					
		10S (64)		9.76		8S-1S & 1N-8N (8L-1L & 1R-8R)		15.25					
		9S (65)		9.75		8S-1S & 1N-8N (8L-1L & 1R-8R)		15.25					
		8S (66)		9.75		8S-1S & 1N-8N (8L-1L & 1R-8R)		15.25					
		7S (67)		9.75		8S-1S & 1N-8N (8L-1L & 1R-8R)		15.25					
016-0137	22	6S (68)	2'-6"	9.75	8	8S-1S & 1N-8N (8L-1L & 1R-8R)	3'-6"	15.25					
		5S-2S (69-72)		9.75		8S-1S & 1N-8N (8L-1L & 1R-8R)		15.25					
		1S (73)		8.75		8S-1S & 1N-8N (8L-1L & 1R-8R)		15.25					
		1N-5N (74-78)		9.75		8S-1S & 1N-8N (8L-1L & 1R-8R)		15.25					
		6N (79)		9.75		8S-1S & 1N-8N (8L-1L & 1R-8R)		15.25					
		7N (80)		9.75		8S-1S & 1N-8N (8L-1L & 1R-8R)		15.25					
		8N (81)		9.75		8S-1S & 1N-8N (8L-1L & 1R-8R)		15.25					
		9N (82)		9.75		8S-1S & 1N-8N (8L-1L & 1R-8R)		15.25					
		10N (83)		9.76		8S-1S & 1N-8N (8L-1L & 1R-8R)		15.25					
		11N (84)		9.75		8S-1S & 1N-8N (8L-1L & 1R-8R)		15.25					
016-0137	20	11S (63)	2'-6"	8.78	11	8S-1S & 1N-8N (8L-1L & 1R-8R)	3'-6"	15.25					
		10S (64)		8.76		8S-1S & 1N-8N (8L-1L & 1R-8R)		15.25					
		9S (65)		8.75		8S-1S & 1N-8N (8L-1L & 1R-8R)		15.25					
		8S (66)		8.75		8S-1S & 1N-8N (8L-1L & 1R-8R)		15.25					
		7S (67)		8.75		8S-1S & 1N-8N (8L-1L & 1R-8R)		15.25					
		6S (68)		9.75		8S-1S & 1N-8N (8L-1L & 1R-8R)		15.25					
		5S-2S (69-72)		9.75		8S-1S & 1N-8N (8L-1L & 1R-8R)		15.25					
		1S (73)		8.75		8S-1S & 1N-8N (8L-1L & 1R-8R)		15.25					
		1N-5N (74-78)		9.75		8S-1S & 1N-8N (8L-1L & 1R-8R)		15.25					
		6N (79)		9.75		8S-1S & 1N-8N (8L-1L & 1R-8R)		15.25					
016-0137	20	7N (80)	2'-6"	9.75	14	8S-1S & 1N-8N (8L-1L & 1R-8R)	3'-6"	15.25					
		8N (81)		9.75		8S-1S & 1N-8N (8L-1L & 1R-8R)		15.25					
		9N (82)		9.75		8S-1S & 1N-8N (8L-1L & 1R-8R)		15.25					
		10N (83)		9.76		8S-1S & 1N-8N (8L-1L & 1R-8R)		15.25					
		11N (84)		9.75		8S-1S & 1N-8N (8L-1L & 1R-8R)		15.25					
		016-0137		20		11S (63)		2'-6"	8.78	17	8S-1S & 1N-8N (8L-1L & 1R-8R)	3'-6"	15.25
						10S (64)			8.76		8S-1S & 1N-8N (8L-1L & 1R-8R)		15.25
						9S (65)			8.75		8S-1S & 1N-8N (8L-1L & 1R-8R)		15.25
						8S (66)			8.75		8S-1S & 1N-8N (8L-1L & 1R-8R)		15.25
						7S (67)			8.75		8S-1S & 1N-8N (8L-1L & 1R-8R)		15.25
6S (68)	9.75		8S-1S & 1N-8N (8L-1L & 1R-8R)		15.25								
5S-2S (69-72)	9.75		8S-1S & 1N-8N (8L-1L & 1R-8R)		15.25								
1S (73)	8.75		8S-1S & 1N-8N (8L-1L & 1R-8R)		15.25								
1N-5N (74-78)	9.75		8S-1S & 1N-8N (8L-1L & 1R-8R)		15.25								
6N (79)	9.75		8S-1S & 1N-8N (8L-1L & 1R-8R)		15.25								
016-0137	20	7N (80)	2'-6"	9.75	25	8S-1S & 1N-8N (8L-1L & 1R-8R)	3'-6"	15.25					
		8N (81)		9.75		8S-1S & 1N-8N (8L-1L & 1R-8R)		15.25					
		9N (82)		9.75		8S-1S & 1N-8N (8L-1L & 1R-8R)		15.25					
		10N (83)		9.76		8S-1S & 1N-8N (8L-1L & 1R-8R)		15.25					
		11N (84)		9.75		8S-1S & 1N-8N (8L-1L & 1R-8R)		15.25					
		016-0137		20		11S (63)		2'-6"	8.78	23	8S-1S & 1N-8N (8L-1L & 1R-8R)	3'-6"	15.25
						10S (64)			8.76		8S-1S & 1N-8N (8L-1L & 1R-8R)		15.25
						9S (65)			8.75		8S-1S & 1N-8N (8L-1L & 1R-8R)		15.25
						8S (66)			8.75		8S-1S & 1N-8N (8L-1L & 1R-8R)		15.25
						7S (67)			8.75		8S-1S & 1N-8N (8L-1L & 1R-8R)		15.25
6S (68)	9.75		8S-1S & 1N-8N (8L-1L & 1R-8R)		15.25								
5S-2S (69-72)	9.75		8S-1S & 1N-8N (8L-1L & 1R-8R)		15.25								
1S (73)	8.75		8S-1S & 1N-8N (8L-1L & 1R-8R)		15.25								
1N-5N (74-78)	9.75		8S-1S & 1N-8N (8L-1L & 1R-8R)		15.25								
6N (79)	9.75		8S-1S & 1N-8N (8L-1L & 1R-8R)		15.25								



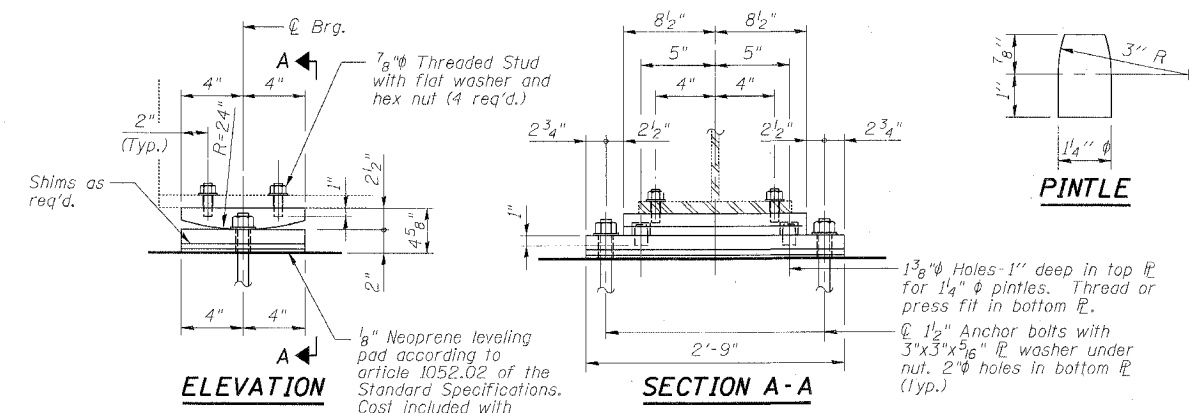
LEGEND

Jack and Remove Existing Bearing

Notes:

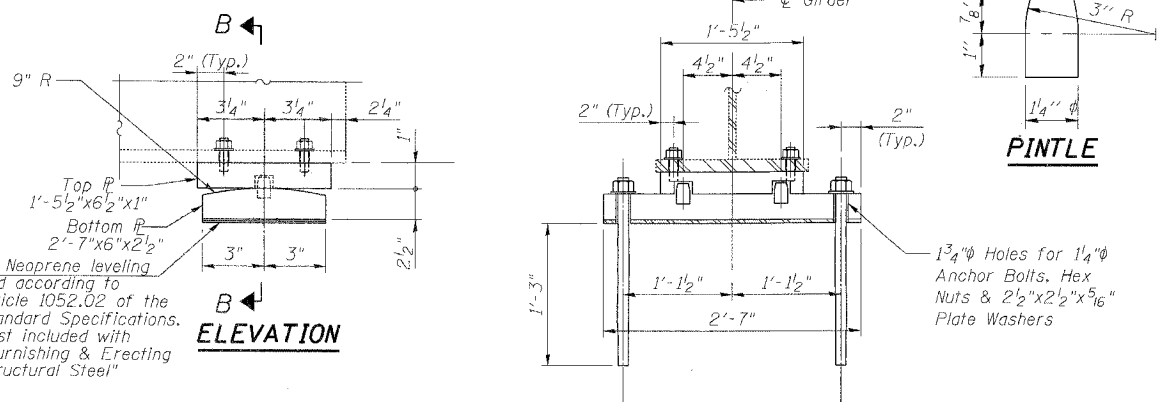
Furnishing and erecting of Fixed Bearings shall be included with "Furnishing and Erecting Structural Steel." Field drills in bottom flanges, side retainers and other steel members (except steel extensions) required for the bearing assembly shall be included in the cost of Elastomeric Bearing Assembly, Type I or Type II.

EXISTING BEARING REMOVAL DETAIL



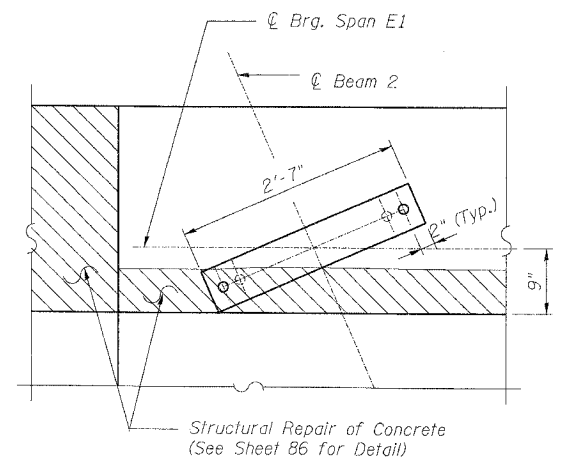
FIXED BEARING REPLACEMENT DETAIL

(S.N. 016-1047, Pier 23, Span E-7, Beam 1)

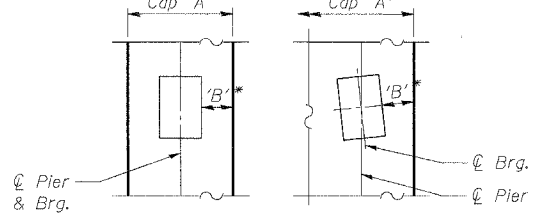


FIXED BEARING REPLACEMENT DETAIL

(S.N. 016-1115, Pier E2, Span E1, Beam 2)



*Chamfer not included in dimension 'B' clearance.



JACKING CLEARANCE PLAN VIEW

REVISIONS	DATE
NAME	

ILLINOIS DEPARTMENT OF TRANSPORTATION
 F.A.I. 94/90 (DAN RYAN EXPRESSWAY)
 DAN RYAN ELEVATED BRIDGE
 BEARING REPLACEMENT & STEEL REPAIR
 FIXED BEARING REPLACEMENT
 & JACKING CLEARANCES
 SCALE: NTS
 DATE: 3/7/2008
 DRAWN BY: LAM
 CHECKED BY: BLU

BOWMAN, BARRETT & ASSOCIATES INC.
 CONSULTING ENGINEERS
 Chicago, Illinois
 312.228.0100
 www.bbainc.com

8-4042 AM 3/21/2008