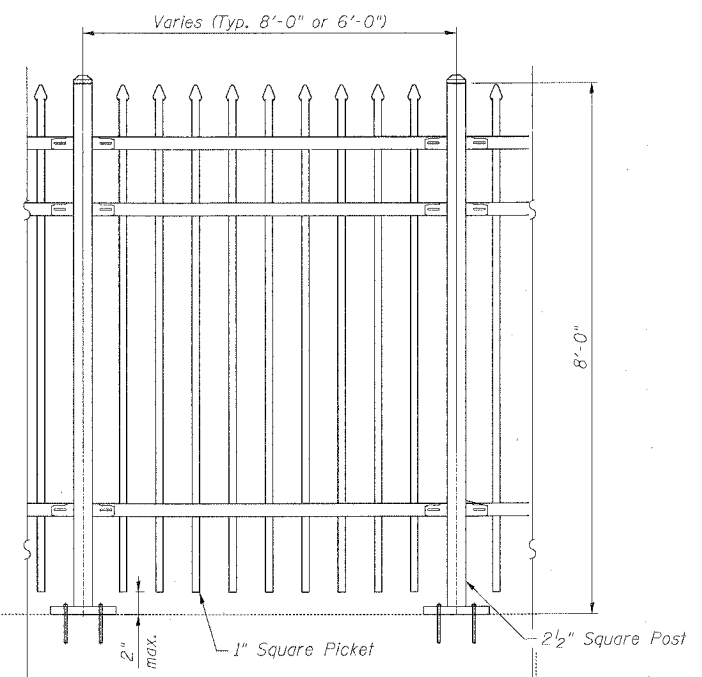
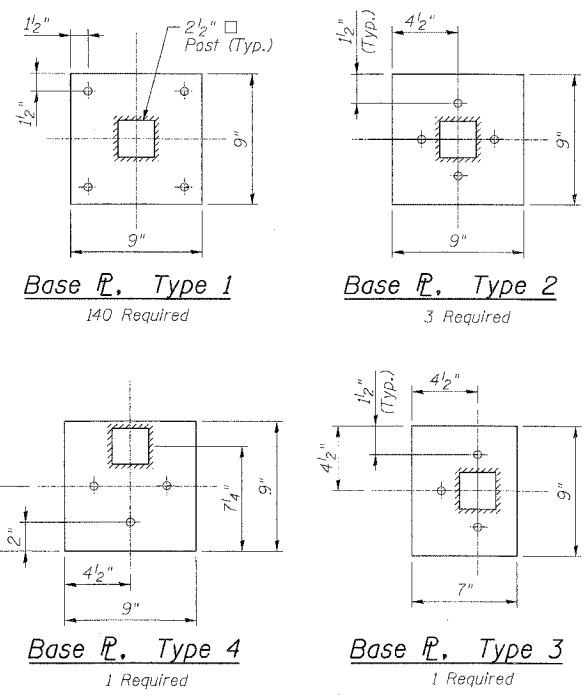
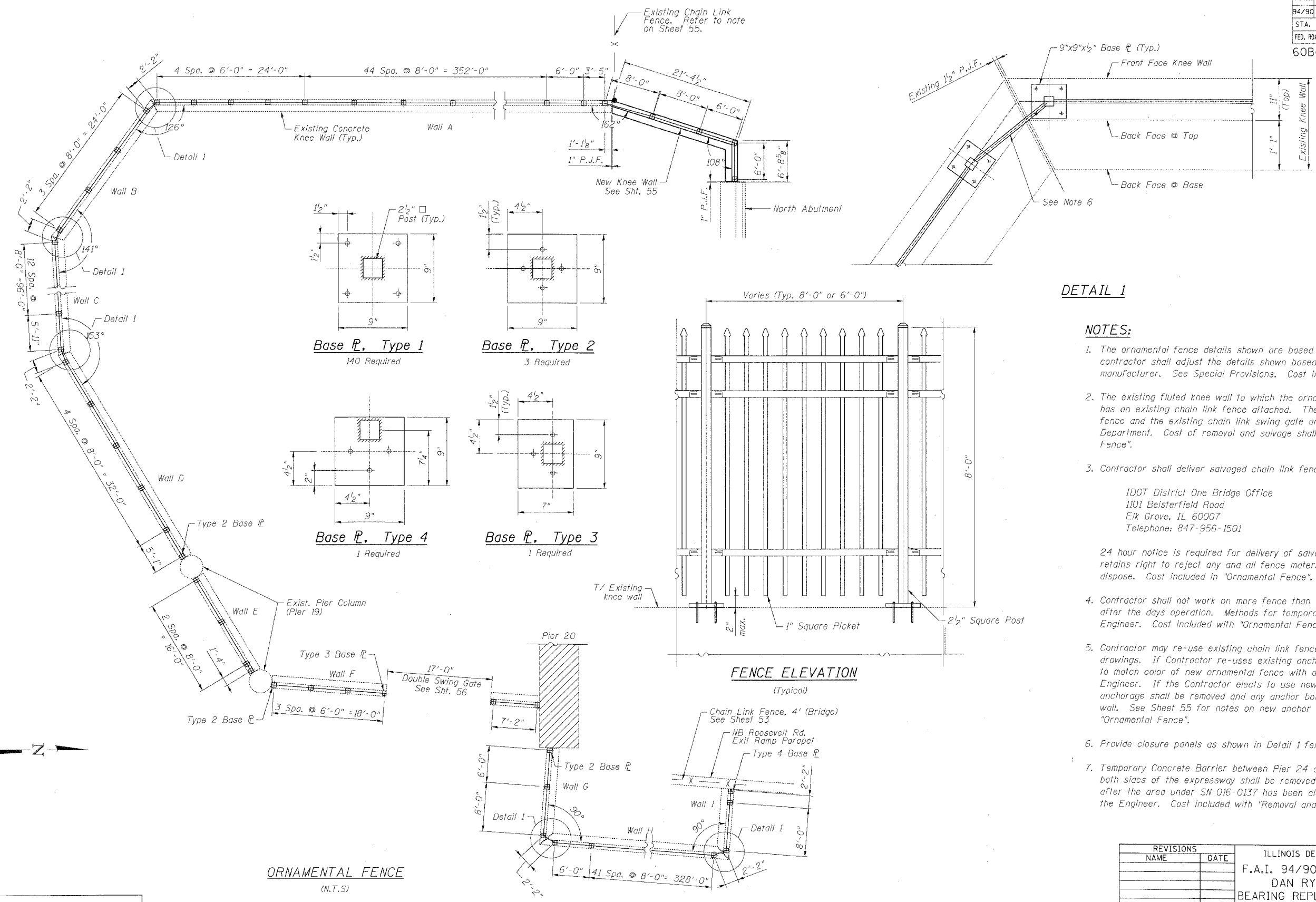


F.A.I.	SECTION	COUNTY	TOTAL SHEETS	SHEET NO.
94/90	2005-086 I	COOK	228	54
STA.	TO STA.			
FED. ROAD DIST. NO.	ILLINOIS	FED. AID PROJECT		

60B07



DETAIL 1

NOTES:

- The ornamental fence details shown are based on a specific manufacturer. The contractor shall adjust the details shown based on the actual fence manufacturer. See Special Provisions. Cost included with "Ornamental Fence".
- The existing fluted knee wall to which the ornamental fence shall be attached has an existing chain link fence attached. The Contractor shall remove this fence and the existing chain link swing gate and salvage for delivery to the Department. Cost of removal and salvage shall be included with "Ornamental Fence".
- Contractor shall deliver salvaged chain link fence and gate materials to:

IDOT District One Bridge Office
1101 Beisterfield Road
Elk Grove, IL 60007
Telephone: 847-956-1501

24 hour notice is required for delivery of salvage materials. Department retains right to reject any and all fence material and require Contractor to dispose. Cost included in "Ornamental Fence".
- Contractor shall not work on more fence than can be temporarily closed up after the days operation. Methods for temporary closure shall be approved by Engineer. Cost included with "Ornamental Fence".
- Contractor may re-use existing chain link fence anchor assembly as shown on drawings. If Contractor re-uses existing anchor assembly it shall be painted to match color of new ornamental fence with a system approved by the Engineer. If the Contractor elects to use new fence anchorage, existing anchorage shall be removed and any anchor bolts cut flush with top of knee wall. See Sheet 55 for notes on new anchor rods. Cost included with "Ornamental Fence".
- Provide closure panels as shown in Detail 1 fence geometry.
- Temporary Concrete Barrier between Pier 24 and the North Abutment along both sides of the expressway shall be removed and disposed by the Contractor after the area under SN 016-0137 has been cleaned up to the satisfaction of the Engineer. Cost included with "Removal and Disposal of Unsuitable Material".

ORNAMENTAL FENCE
(N.T.S)

REVISIONS	
NAME	DATE

ILLINOIS DEPARTMENT OF TRANSPORTATION
 F.A.I. 94/90 (DAN RYAN EXPRESSWAY)
 DAN RYAN ELEVATED BRIDGE
 BEARING REPLACEMENT & STEEL REPAIR
 ORNAMENTAL FENCE DETAIL (1 OF 3)
 SCALE: NTS
 DATE: 3/7/2008
 DRAWN BY: MTR
 CHECKED BY: BLU

BOWMAN, BARRETT & ASSOCIATES INC.
 CONSULTING ENGINEERS
 Chicago, Illinois
 312.228.0100
 www.bbandsinc.com

6-4120 AM
 3/21/2008