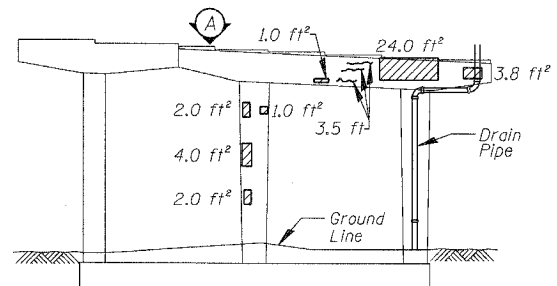
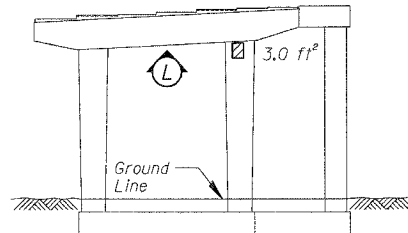


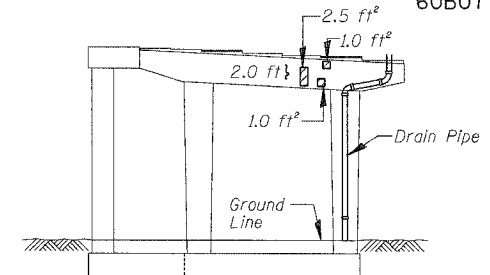
PIER A15 - SOUTH ELEVATION
(Looking North)



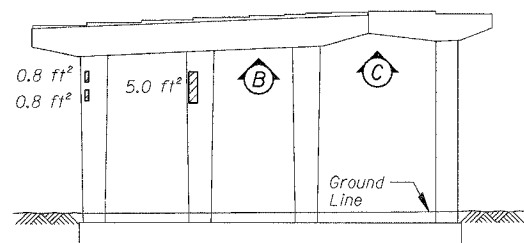
PIER A15 - NORTH ELEVATION
(Looking South)



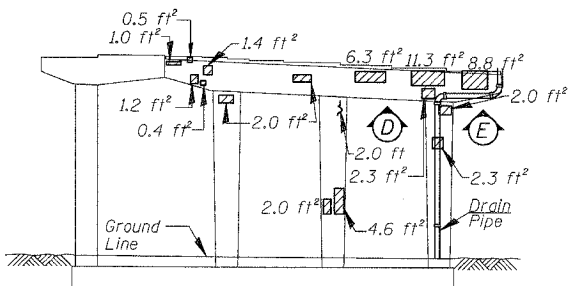
PIER A10 - SOUTH ELEVATION
(Looking North)



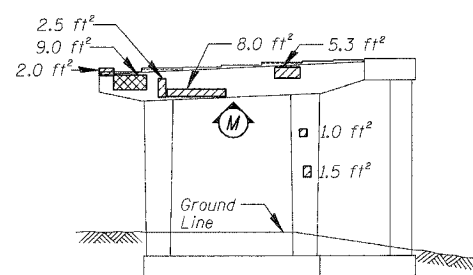
PIER A10 - NORTH ELEVATION
(Looking South)



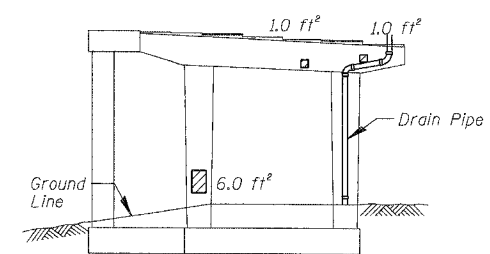
PIER A14 - SOUTH ELEVATION
(Looking North)



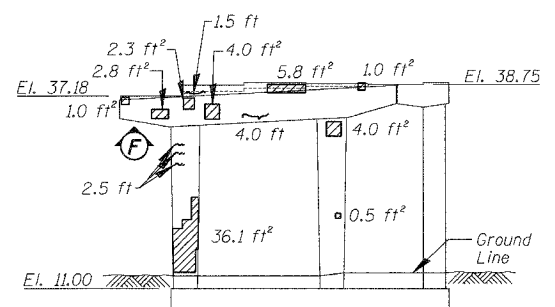
PIER A14 - NORTH ELEVATION
(Looking South)



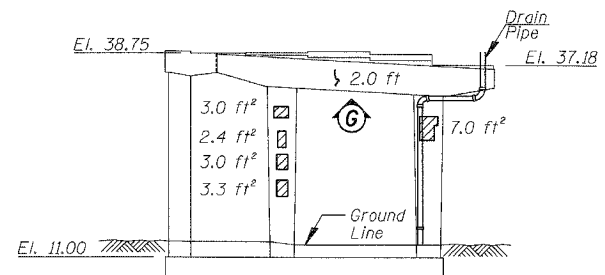
PIER A9 - SOUTH ELEVATION
(Looking North)



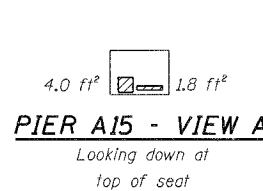
PIER A9 - NORTH ELEVATION
(Looking South)



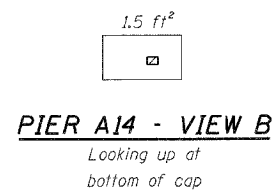
PIER A12 - SOUTH ELEVATION
(Looking North)



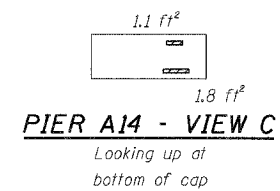
PIER A12 - NORTH ELEVATION
(Looking South)



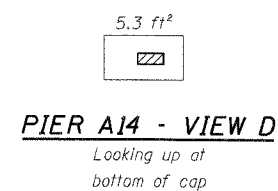
PIER A15 - VIEW A
Looking down at top of seat



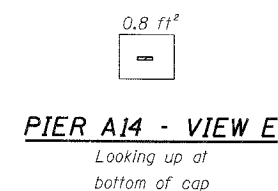
PIER A14 - VIEW B
Looking up at bottom of cap



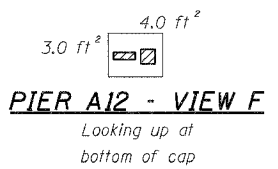
PIER A14 - VIEW C
Looking up at bottom of cap



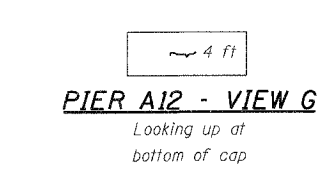
PIER A14 - VIEW D
Looking up at bottom of cap



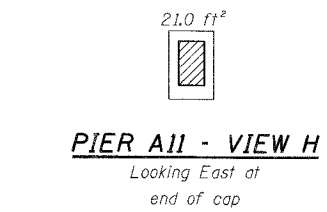
PIER A14 - VIEW E
Looking up at bottom of cap



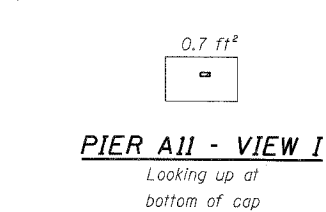
PIER A12 - VIEW F
Looking up at bottom of cap



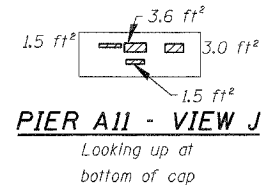
PIER A12 - VIEW G
Looking up at bottom of cap



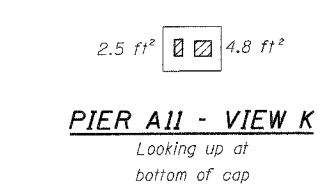
PIER A11 - VIEW H
Looking East at end of cap



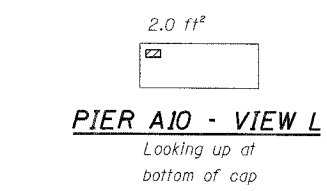
PIER A11 - VIEW I
Looking up at bottom of cap



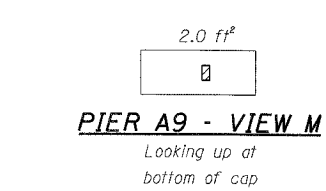
PIER A11 - VIEW J
Looking up at bottom of cap



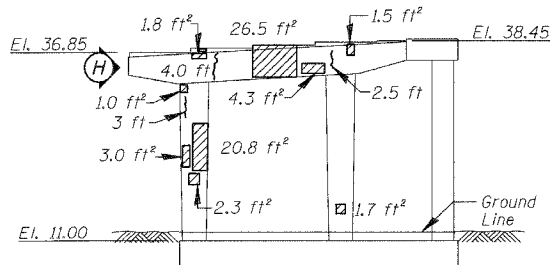
PIER A11 - VIEW K
Looking up at bottom of cap



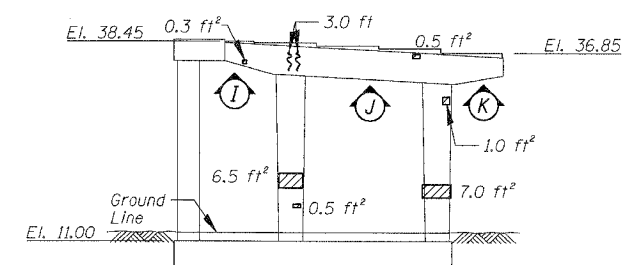
PIER A10 - VIEW L
Looking up at bottom of cap



PIER A9 - VIEW M
Looking up at bottom of cap



PIER A11 - SOUTH ELEVATION
(Looking North)



PIER A11 - NORTH ELEVATION
(Looking South)

BILL OF MATERIAL

ITEM	UNIT	QUANTITY
Structural Repair of Concrete (Depth equal to or less than 5")	SQ. FT.	341.2
Structural Repair of Concrete (Depth greater than 5")	SQ. FT.	69.0
Epoxy Crack Injection	FOOT	49.0

REVISIONS	
NAME	DATE

ILLINOIS DEPARTMENT OF TRANSPORTATION
 F.A.I. 94/90 (DAN RYAN EXPRESSWAY)
 DAN RYAN ELEVATED BRIDGE
 BEARING REPLACEMENT & STEEL REPAIR
 CONCRETE PIER REPAIRS
 SN 016-1067, PIERS A9-A12,A14,A15
 SCALE: NTS
 DATE: 5/18/2007
 DRAWN BY: LAM
 CHECKED BY: BLU

BOWMAN, BARRETT & ASSOCIATES INC.
 CONSULTING ENGINEERS
 Chicago, Illinois
 312.228.0100
 www.bbainc.com

For Notes and Legend See Sheet 6

5/24/2007 5:00:42 PM